

water playful connection flow
experience surfaces activity
pace centre for the arts path
seat culture flexibility knowl
memorial **Buchanan** quiet foc
solitary **Courtyards** permeabl
accessible meandering visibl
sustainability vitality divers
performance cafe **Concept Design Report** spor
UBC Public Realm June 2009
planting celebrations stage
learning sensory stroll lighti

Prepared By:

UBC Campus and Community Planning
University of British Columbia
2210 West Mall, Vancouver

t: 604•822•8228
f: 604•822•6119

w: www.planning.ubc.ca

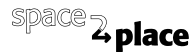


space2place design inc.

308-318 Homer Street
Vancouver, British Columbia

t: 604•646•4110
f: 604•646•4120

e: studio@space2place.com
w: www.space2place.com



with generous contributions from e•space:

Environmental Design 401 studio students and
professor Martin Lewis:

Caitlin Bailey • David Bishop • Alessandra Braganini
• Beverly Chan • Rebecca Esau • Daniel Hapton •
Genta Ishimura • Laura Kozak • Arthur Leung • Edward
Minnett • Roya Mottahedeh • Frederica Piccone • Elsa
Snyder • Eric Stockand • Gigi Tang • Michael Vander
Laan • Mary Wong • Audrey Young • Jonathan Yu •
Stephanie Yu • Kevin Zhang • Ellen Ziegler

Site Analysis

3 policy context

- Public Realm Design Principles
- Statement Of Significance
- SOS Front Entry/West Courtyard
- SOS East Courtyard
- Interviews with Key Designers
- Renew Plans

15 social context

- Departmental Demographic
- Places of Interest and Gathering
- Ground Floor -Student Services
- Space Programming
- Envelope Upgrade

17 physical context

- History
 - Site Character and History
 - Historic Outdoor Sculpture
- Location
 - Context Maps
- Views
 - Site Photos and Key Sightlines
- Movement
 - Intensity of Daily Use
 - Pedestrian Circulation and Ground Floor Plan
 - Bicycle Circulation
 - Universal Access
 - Vehicle Circulation / Services
- Environment
 - Prevailing Winds
 - Utilities
 - Drainage
 - Tree Locations
 - Significant Trees
 - Site Design
 - Solar Gain
 - Shadow Study
- Materials
 - Public Realm Materials
 - Pervious and Impervious Surfaces
 - Surface Lexicon
- Experience
 - Night Lighting
 - Scaled Geometry
 - Perceptual Space

User Activities and Directions

38 Co-Design Group workshop

Workshop Overview
Priority Bubble Diagrams
Vignettes

Concept Design

52 project principles

Guiding the Concept Design Development

55 information gathering

Resource Team Session 1
Summary of Key Considerations

57 design concept options

Resource Team Session 2
Linear Concept
Ribbon Concept
Resource Team Responses

69 preferred concept

Resource Team Session 2
Refined Ribbon Concept
Inspirations
Resource Team Responses

Site Analysis

Public Realm Design Principles

- Employ landscape treatments as the major unifying visual elements of the campus, using both manicured and natural treatments to create a cohesive whole.
- Embrace local vegetation and design for natural systems.
- Design for low, lifecycle, maintenance costs and GHG footprint.

- Create places and passageways of beauty, delight, discovery and universal appeal.
- Design for pedestrian and bicycle priority with universal physical access.
- Create a pedestrian scale, reducing the perceived distances between destinations.

- Express the identity of the university by showcasing the culture, collections, research and learning of faculties.
- Preserve and celebrate the places and resources valued by the community.
- Integrate outdoor and indoor pedestrian routes to reveal the research and learning within buildings.

- Strategically locate amenities, programming and infrastructure, to fully support the needs of users.
- Design for all seasons, in particular the wet, cool, and bleak west coast climate
- Provide a variety of opportunities to sit and socialize.
- Provide and foster a safe, comfortable night-time environment for all.

Objectives

Create a **network of outdoor public spaces** that:

- Animates, invigorates and brings life to campus.
- Enhances the educational experience with outdoor informal learning.
- Promotes the sharing of ideas, creative expressions and interaction across disciplines.
- Supports and nurtures the physical and mental health of our students, faculty and staff.
- Instills pride and a strong sense of place, showcasing to visitors from around the world that we care about our environment.
- Are economically sustainable and well used and supported by the community.

PUBLIC REALM DESIGN PRINCIPLES /OBJECTIVES

source: CAMPUS & COMMUNITY PLANNING



West Courtyard with East Courtyard under construction, 1960



*Top: Student Rally staged on Front Entry Court (n.d.)
Middle: View of West Courtyard from its southeast corner (1958)
Bottom: View of East Courtyard today*



Birmingham & Wood Denise Cook Design

Statement of Significance

Buchanan Courtyards
The University of British Columbia
1958-60

source: BIRMINGHAM & WOOD ARCHITECTS
Denise Cook Design

Statement of Significance
Buchanan Courtyards
The University of British Columbia
1958-60

Description of the Historic Place

The Buchanan Courtyards consists of the Front Entry Court facing Main Mall, and two courtyard spaces bounded by five wings of the Buchanan Building complex. The complex is located at the north end of The University of British Columbia's Point Grey campus, between Main and East Malls.

General

Values

The Buchanan Courtyards are valued as the campus' finest example of Modernist civic space, designed to culturally elevate and inspire the modern open and inclusive university society after the Second World War. Along with other landscape changes at the north end of the campus in the early 1960s, the Courtyards helped recast this public face of the campus from a simple space with a breathtaking view to a dynamic network of social spaces incorporating that natural beauty.

The design of the Courtyards signaled the University's participation in the Modernist transformation of North American college and university campuses in the 1950s and 60s. The Front Entry Court and West Courtyard in particular are important for their association with the firm Thompson Berwick & Pratt, descended from Sharp & Thompson, the firm who won the competition for the original planning and design of the campus; and specifically Roy Jessiman (Partner-in-charge) and Zoltan Kiss (project Architect) at TB&P, who represented the young generation carrying forward the firm's traditional role as the campus architects, and who introduced the Modernist aesthetic to the UBC campus with their building and landscape design. These courts are important examples of the Modernist practice of making the landscape and building one integrated design.

Their original designs and subsequent modifications are a record of the evolving campus landscapes following the 1960s, characterized by the desire to increase the garden-like nature of the campus' open space.

Character-defining Elements

Form and scale

- Elongated rectangular form found at various scales throughout the Courtyards and building complex, from building footprints to proportions of the Roman brick pavers
- Gridded design intimately related to the building grids
- Landscape design laid out in an asymmetrical grid
- Sense of enclosure balanced by a dynamic passages and openings through and under buildings to open space beyond
- Irregular entrances and exits between the courtyards and the campus and between the courtyards
- Covered spaces created by the building overhangs
- Framed connections below building overpasses between courtyards
- Connection or view from west courtyard to the conifer-planted lawn to the north

Materials and surfaces

- Low raised rectangular planting beds used to create discrete spaces
- Two coloured concrete surfaces in a grid of large squares with surrounding painted concrete banding
- Remaining sculpture

Plant material

- Tree planting as specimen or in small groupings
- Use of coniferous trees
- Restrained plant palette of low shrubs, trees and lawn

Use

- Continued use as a student and faculty gathering space



Top: Sculpture in the West Courtyard, 196-
 Bottom: Buchanan Building Complex with Front Entry Court in foreground, 1962

Front Entry Court (1958)

Values

The Front Entry Court is valued for being the public face of the Modernist Buchanan Building complex, adding a simple, sophisticated, modern public space onto the north end of the signature open space of the campus: Main Mall. The space is important aesthetically for its complete visual connection with the entrance lobby and main stairs to the floor and West Courtyard below. The court is also valued for its association with the student rallies of the 60s and early 70s, which utilized the court as a conveniently raised stage adjacent to the mall.

Character-defining Elements

- Wall sculpture
- Simple concrete pavement
- Contrasting building surfaces: brick veneer/glass wall
- Asymmetrical flanking planter
- Two short flights of broad stairs as part of broad paved entry path
- Regular line of lighting standards leading to Main Mall
- Formal link of broad path with spacing of Main Mall boulevard trees
- Transparent entry door wall



West Courtyard (1958)

Values

The West Courtyard, bounded on three sides by the original three wings of the building complex, is of cultural value for the boost it gave to the Arts Faculty's presence at the university. Its spare detailing, scale, and contemporary sculptures together signaled the faculty's cultural ambitions.

The sophisticated interweaving of outdoor space and building make West Courtyard an important regional example of dynamic site planning, formal rigour, and restrained detailing that are the hallmark of early Modernism (International Style). The choice of simple materials and faux white stone paving (road paint) are important examples of the local design community's adaptation of continental design trends to local restricted budgets and conditions.

The courtyard is also valued for its site-specific engagement with the wider natural landscape that is the hallmark of Vancouver Modernism: the courtyard was deliberately designed to embrace the mountain view that defines the north end of the campus, making the reflecting pool and lawn intermediary elements between the cultivated courtyard and the breathtaking coastal landscape in the distance.

The space is culturally and historically valuable as the setting for many student events, including the great Engineering sculpture spoof, reflecting the important role the space played in campus life in the years immediately following its construction.

Character-defining Elements

- Planning and physical remnants of reflecting pool
- Remains of view through open north end
- Wide passage through south end under Block B
- Generous areas covered by building
- Largely paved open space; paving with visual grid design, and some panels of elongated Roman brick
- Planting beds adjacent to office block
- Transparent wall between courtyard and entry foyer
- Original sculpture, whether on- or off-site



East Courtyard (1960)

Values

The East Courtyard, formed two years following the West Courtyard with the construction of the second-phase of the complex, is of modest value primarily for its continuation of the earlier West Courtyard's palette of materials and design aesthetic, and for its garden-like nature that provides a counterpoint to the West Courtyard plaza.

This courtyard can be seen as aesthetically valuable as a contemporary descendent of the university cloister: a quiet internal space bounded by building, and designed to accommodate quiet seating or passage through on foot or bicycle.

It is of some cultural and symbolic value for its stock of memorial trees, lending the space a social intimacy, and a role of linking the present student body and faculty to important social history.

Character-defining Elements

- Memorial trees aligned with hard landscaping grid
- Gridded paving, with brick panels, concrete panels, and borders
- Open to the south
- Predominance of soft landscaping



The view of the East Courtyard from the West Courtyard

source: BIRMINGHAM & WOOD ARCHITECTS
Denise Cook Design

Interviews with key TB&P designers

Phone interview with Zoltan Kiss

History of building design

- TB&P doing most the work at UBC at the time with Roy Jessiman the partner-in-charge for the UBC projects
- Buchanan Building Phase 1: Blocks A, B, and C
- Buchanan Phase 1 designed without input of landscape architect; does not remember any design consultations with CHO. Landscape design entirely followed building design
- Colour of glazed facing bricks to replicate UBC granite colour, for continuity yet in a contemporary idiom
- Courtyard open to the north a deliberate decision to make connection of the civic space with the natural landscape
- Buchanan Phase I was designed in the International Style, which at the time was relatively new to North America, but an idiom familiar to anyone living in Europe
- The enameled metal panels were an innovation in this part of the world
- There was no difficulty convincing the client to do a Modernist building; the client was a small group headed by the Arts dean.
- TB&P not retained to do Phase II

Zoltan Kiss

- Zoltan Kiss Project Architect, who also designed research buildings and many other buildings on campus
- Emigrated from Hungary to Denmark 1945-1950, then to Vancouver, where he had a sponsor

Phone interview with Barry Downs

TB&P

- Roy Jessiman underrecognized for his role in the post-war design community of Vancouver
- Modernism
 - Inspiration from what was happening south of the border, as epitomized by the work of Skidmore Owings & Merrill (International Style), which was derived from Mies van der Rohe's work, particularly his work in the United States
 - Buchanan Phase I exemplified the Style's formal, modular, anonymous qualities, but done with local practices that mimicked the appearance of Mies' work without the budget
 - Block B on stilts is a legacy of Gropius at Harvard
 - Very much a plan designed to a grid (Jessiman always designed on graph paper)
 - No recollection of discussion of landscape design

Interview with Cornelia Haan Oberlander

TB&P

- CHO associated with the firm at the time of the designing of the first phase
- Hard landscaping designed by the architects (Jessiman, Kiss)
- Plant specimens signature of species in favour at the time, particularly the three *Robinia pseudoacacia* in the planter nearest the entry lobby and the birch (now gone) in the southeast corner
- Discovery of the faux light stone finish (road paint)

Supplementary site photographs

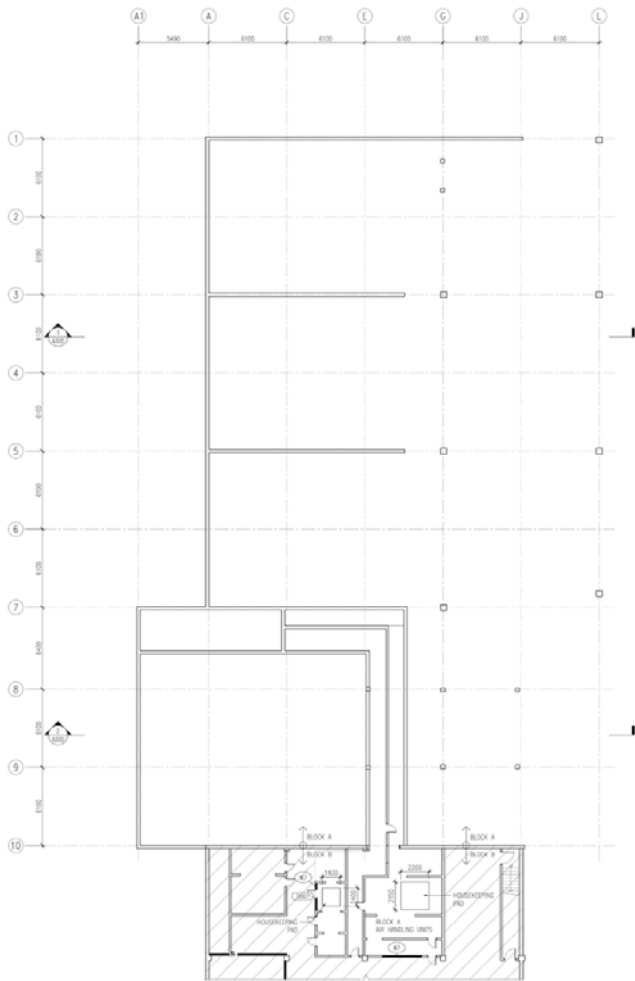
East Courtyard



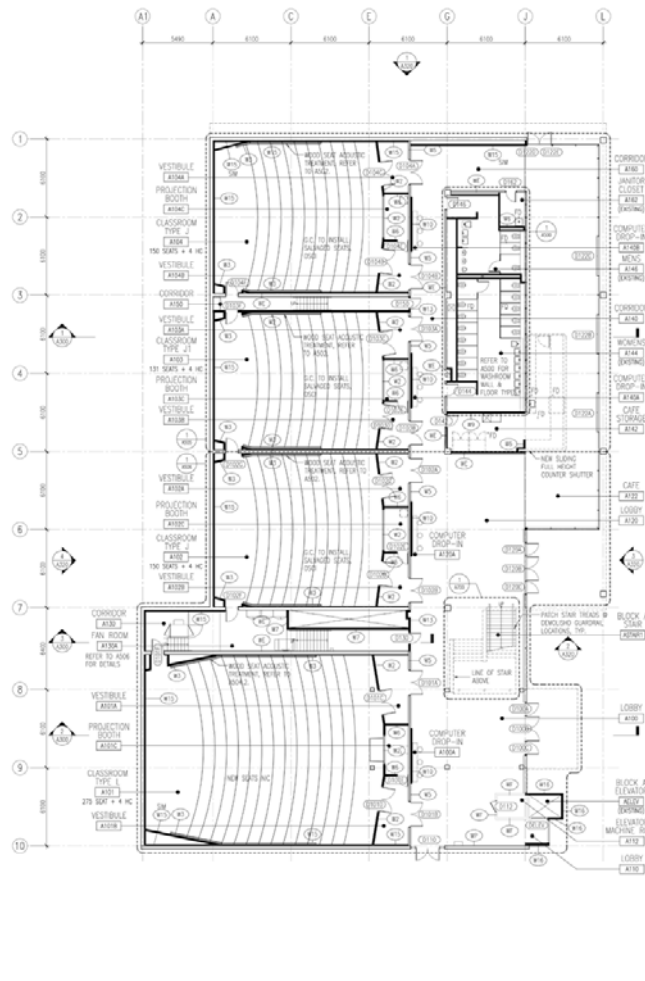
West Courtyard



Sealium in West Courtyard (1962)



1 FLOOR PLAN: BLOCK B BASEMENT
1:100



2 FLOOR PLAN: BLOCK A LEVEL 1
1:100

NOTES A100 SERIES:
 CONSTRUCTION: ALL WORK TO BE PERFORMED IN ACCORDANCE WITH REQUIREMENTS DESCRIBED IN BCAS CODE PART 8.
 FINISHING: TO BE PROVIDED AT THE DISCRETION OF THE ARCHITECT AND SHALL BE PROVIDED IN ACCORDANCE WITH THE BCAS CODE PART 8. THE FINISHING SHALL BE PROVIDED IN ACCORDANCE WITH THE BCAS CODE PART 8. THE FINISHING SHALL BE PROVIDED IN ACCORDANCE WITH THE BCAS CODE PART 8.
 CONCRETE: FILL AND PATCH ALL DAMAGED PORTLAND IN CONCRETE SLAB. ALL RESULTS OF REMEDIATION OF REPAIRS SHALL BE PROVIDED TO THE ARCHITECT FOR REVIEW AND APPROVAL.
 FLOORING: REMOVE ALL EXISTING FLOORING IN NEW FLOORING AS PERMITTED BY THE ARCHITECT. REMOVE ALL EXISTING FLOORING AND CLEAN LANDING, RISERS AND STAIRS TO BE REFINISHED TO MATCH EXISTING SURFACE TREATMENT AS PER SPECIFICATION.
 SEE A100 SERIES FOR REFLECTED CEILING PLAN.
 SEE A100 SERIES FOR FURNITURE FLOOR PLAN AND DETAIL REFERENCES.
 ALL INTERIORS ARE TO BE COMPLETED ON THE ALREADY EXISTING CONCRETE FLOOR SLAB, UNLESS NOTED OTHERWISE.
 PROVIDE FRAMING FOR STORAGE AS REQUIRED BY CODE 2006 FOR THE AND 2015 IBC AND ACCESSIBLE USE FOR STORAGE FOR CODE MANIPULATION AND WAREHOUSING AS PER NATIONAL STANDARDS AND THE TECHNICAL SPECIFICATIONS.
 SEE A100 SERIES FOR MORE DETAILED FLOOR PLANS, REFLECTED CEILING PLANS, FURNITURE FLOOR PLANS, EQUIPMENT, AND DETAIL REFERENCES.
 REFER TO TENDER FOR MORE INFO FOR USE OF EXISTING AREA ONLY.

ALTERNATE SOLUTIONS:
 ALTERNATE SOLUTION #1 - PROVIDE TABLE AND SEATING IN CLASSROOMS TYPE L, L1, AND L2.

LEGEND A100 SERIES:
 NEW CONSTRUCTION
 EXISTING WALLS TO REMAIN
 ROOF TYPE #1 - EXISTING TO REMAIN
 ROOF TYPE #1 - EXISTING TO BE REWORKED
 ROOF TYPE #2 - NEW ENTRANCE TO BLOCK A
 ROOF TYPE #3 - EXISTING CANOPY TO BE REWORKED
 NEW CONCRETE SLAB TO MATCH EXISTING
 NEW TERRAZZO FLOOR TO MATCH EXISTING
 INSTALL AFTER MEMBRANE REPLACEMENT

LEGEND A100 SERIES:
 F.F.D. FLOOR FINISH - REFER TO PLUMBING DRAWINGS
 F.W.L. NEW BIA WATER LEAKS - REFER TO PLUMBING DRAWINGS
 F.F.E. FIRE STOP CASING - REFER TO FIRE DRAWINGS
 R.S. NEW ROOF DRAIN & GUTTER - REFER TO PLUMBING DRAWINGS
 ROOF ASHTRAY

BUSBY PERKINS + WILL
 1220 PEARSON BLVD
 VANCOUVER, BC
 CANADA V6B 2Y5
 T 604 684 5445
 F 604 684 5447
 www.busbyperkinswill.ca

**Buchanan Renovation
 UBC
 PHASE 4
 BLOCK A**

Revisions		
No.	Issue	Date
A	ISSUED FOR TENDER	02 JUL 09

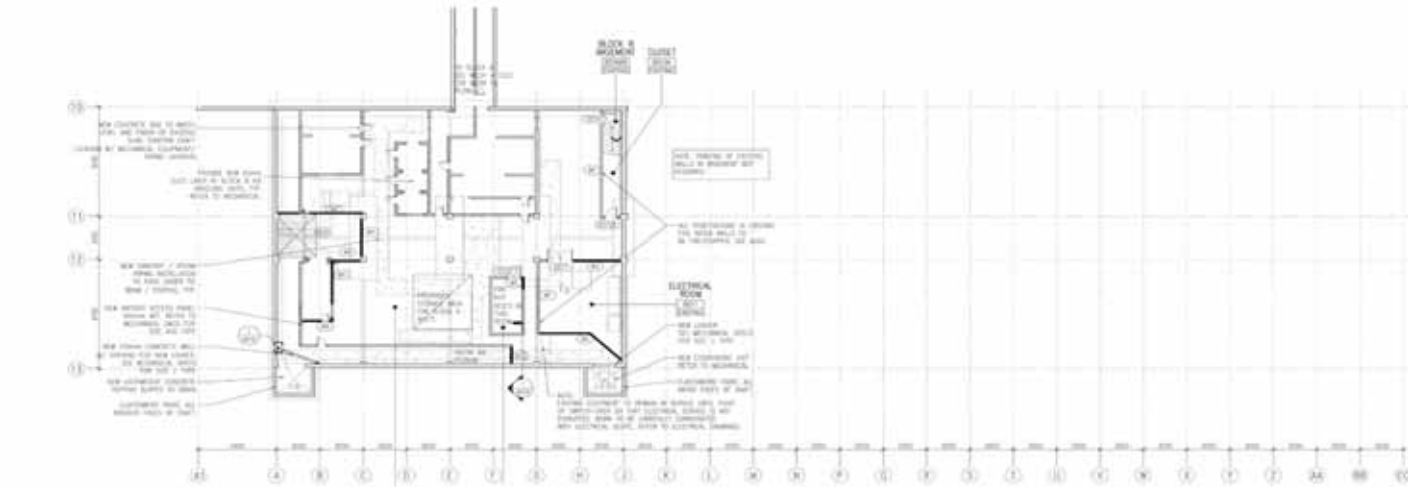
Sheet Information	
Date:	14 November 2009
Job Number:	0423
Drawn:	TM/JP
Checked:	ES
Approved:	ES

**FLOOR PLANS:
 BLOCK A
 BASEMENT
 + LEVEL 1**

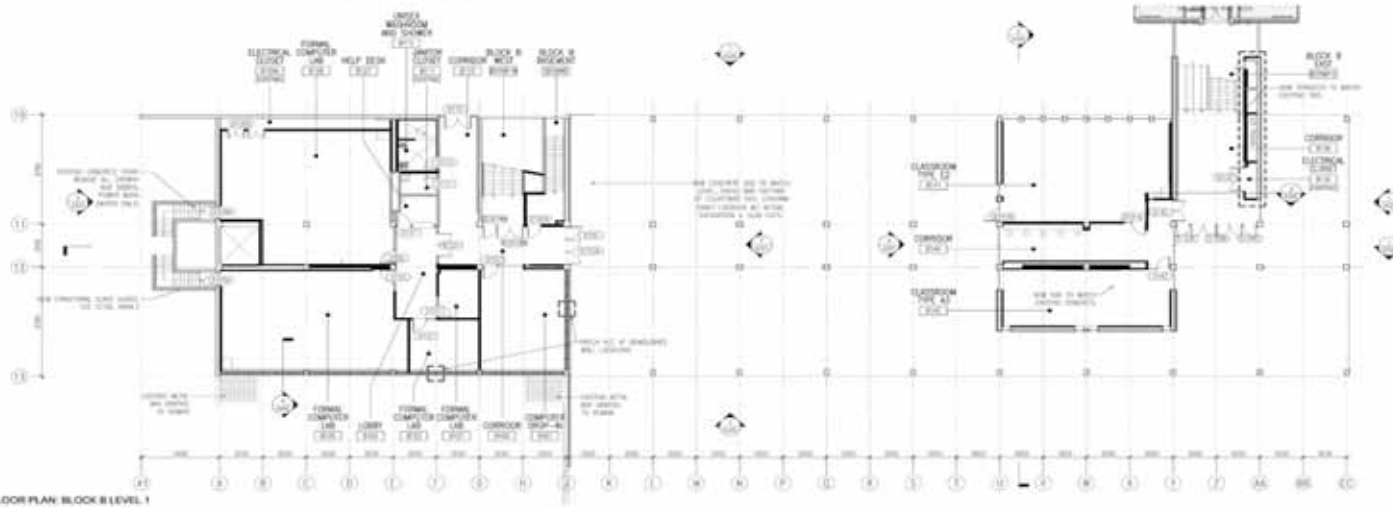
Sheet
A100

RENEW - BLOCK A

source: BUSBY PERKINS + WILL



1 FLOOR PLAN: BLOCK B BASEMENT LEVEL



2 FLOOR PLAN: BLOCK B LEVEL 1

NOTES A100 SERIES

CONSTRUCTION SHALL BE IN ACCORDANCE WITH THE BC BUILDING ACT AND THE BC BUILDING REGULATIONS. THE PROJECT SHALL BE DESIGNED AND CONSTRUCTED TO MEET THE REQUIREMENTS OF THE BC BUILDING ACT AND THE BC BUILDING REGULATIONS. THE PROJECT SHALL BE DESIGNED AND CONSTRUCTED TO MEET THE REQUIREMENTS OF THE BC BUILDING ACT AND THE BC BUILDING REGULATIONS. THE PROJECT SHALL BE DESIGNED AND CONSTRUCTED TO MEET THE REQUIREMENTS OF THE BC BUILDING ACT AND THE BC BUILDING REGULATIONS.

ALTERNATE SOLUTIONS

ALTERNATE SOLUTION 1: [Detailed description of alternate solution 1]

ALTERNATE SOLUTION 2: [Detailed description of alternate solution 2]

ALTERNATE SOLUTION 3: [Detailed description of alternate solution 3]

ALTERNATE SOLUTION 4: [Detailed description of alternate solution 4]

BUSBY PERKINS + WILL

1000 Burrard Street
Vancouver, BC
V6C 1K8
Tel: 604.681.1111
www.busbypk.com

Buchanan Renovation UBC PHASE 3 BLOCK B

LEGEND A100 SERIES

- Existing Structure
- Proposed Structure
- Proposed Structure - Not to Scale
- Proposed Structure - Not to Scale
- Proposed Structure - Not to Scale
- Proposed Structure - Not to Scale

Revisions

No.	Description	Date
1	Issue for	10/20/08
2	Revised for	10/24/08
3	Revised for	10/24/08
4	Revised for	10/24/08
5	Revised for	10/24/08
6	Revised for	10/24/08

Sheet Information

Date: 10/20/08
 Project: Buchanan
 Title: FLOOR PLANS: BLOCK B BASEMENT + LEVEL 1

A100

RENEW - BLOCK B

source: BUSBY PERKINS + WILL

NOTES A100 SERIES:
 DEMOLITION: ALL WORK TO BE PERFORMED IN ACCORDANCE WITH REQUIREMENTS SPECIFIED IN BLOCK PHASE 2.
 REPAIRWORK: TO BE PROVIDED AT ANY WOOD OPENINGS IN WALLS, FLOORS, CEILING, ETC. NO FINE REPAIRWORK REQUIRED IF COST MAY BE SUBSTANTIAL.
 FLOORING: REPLACE ALL EXISTING SHEET FLOORING WITH NEW RESILIENT FLOORING UNLESS OTHERWISE NOTED.
 EXISTING STUDENT LOCKERS: ALL STUDENT LOCKERS TO BE PROVIDED FOR IN COMPLIANCE WITH THE BEST AVAILABLE TO BE CLEANED AND REPAIRED TO MEET THE REQUIREMENTS OF CANADIAN STANDARDS. DAMAGED LOCKERS TO BE DISPOSED OF PER LOCAL REQUIREMENTS.
 EXISTING UBC IT SERVICES COMMUNICATIONS ROOM TO REMAIN IN OPERATION THROUGHOUT CONSTRUCTION. EXISTING EQUIPMENT LOCATED ON THE WALLS AND INSIDE MUST NOT BE DISTURBED.
 SEE ALSO SERIES FOR GLASS ROOFS, OFFICES AND WORKSPACES.
 ALL PARTITIONS ARE TO BE CENTERED ON THE ADJACENT EXISTING WINDOW WALLS OR COLUMN, UNLESS NOTED OTHERWISE.

LEGEND A100 SERIES:

- NEW CONSTRUCTION
- EXISTING WALLS TO REMAIN
- EXISTING CONCRETE WALLS TO REMAIN
- ROOF TYPE 92 - EXISTING TO REMAIN
- ROOF TYPE 92 - EXISTING TO BE RE-ROOFED
- ROOF TYPE 92 - NEW ROOF AT ELEVATION
- F.D. FLOOR DRAIN - SEE MECHANICAL
- F.B. EXISTING PAINT WITH LEADER
- F.E. PAINT EXTERIOR GRABER - SEE FIRE DRAWING

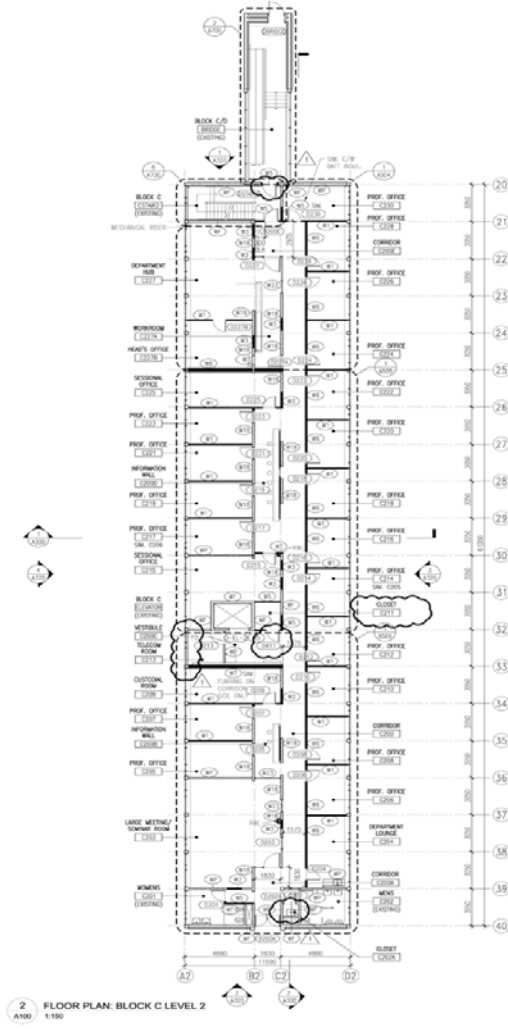
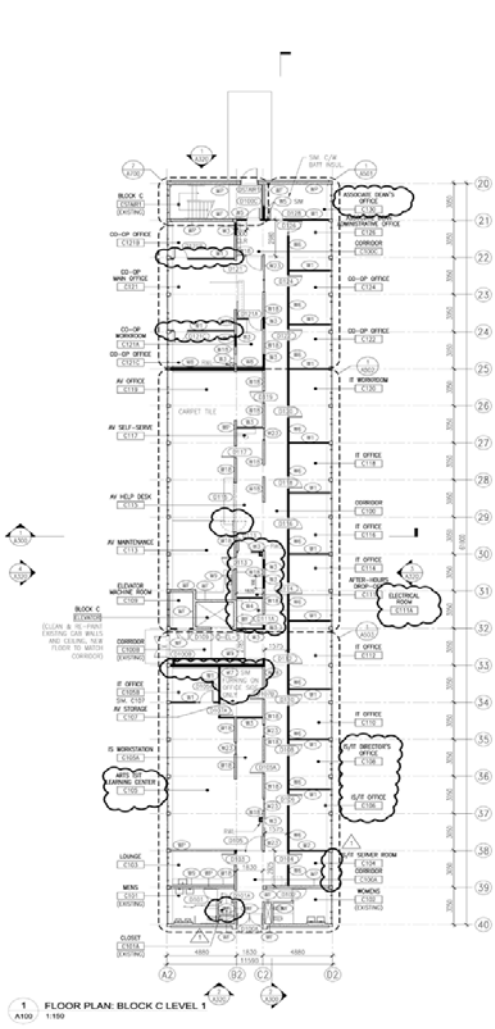
Revisions

B	REVISED FOR CONSTRUCTION	02.16.07
A	REVISED FROM CONSTRUCTION	07.14.06
No.	Issue	Date

Sheet Information
 Date: July 15, 2008
 Job Number: 6429
 Drawn: TS/AM
 Checked: B/W
 Approved:
 Title:

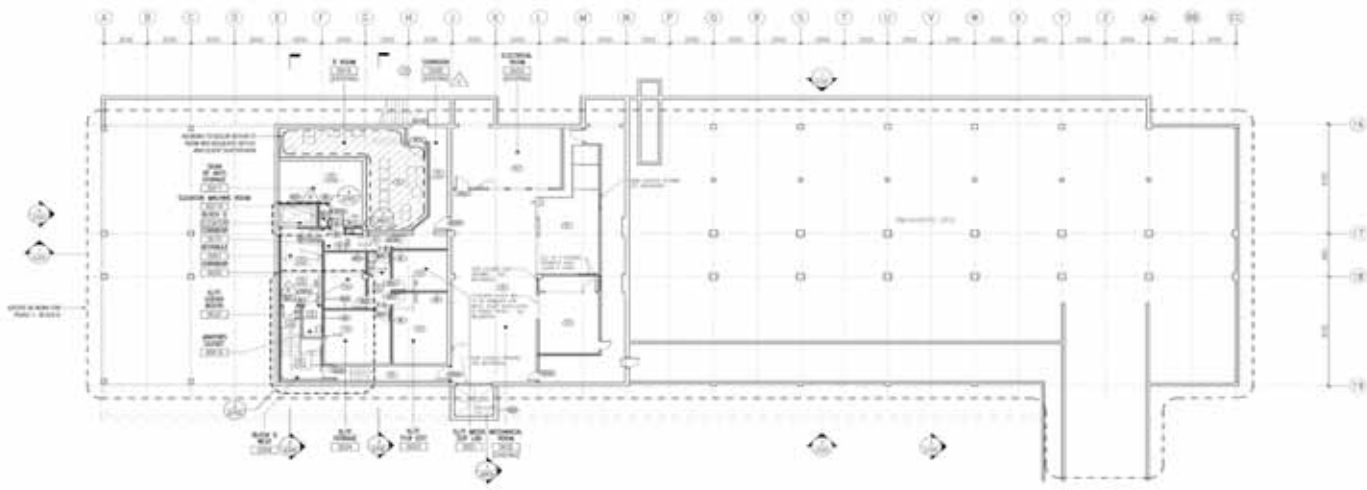
**FLOOR PLANS:
 BLOCK C
 LEVEL 1
 + LEVEL 2**

Sheet **A100**

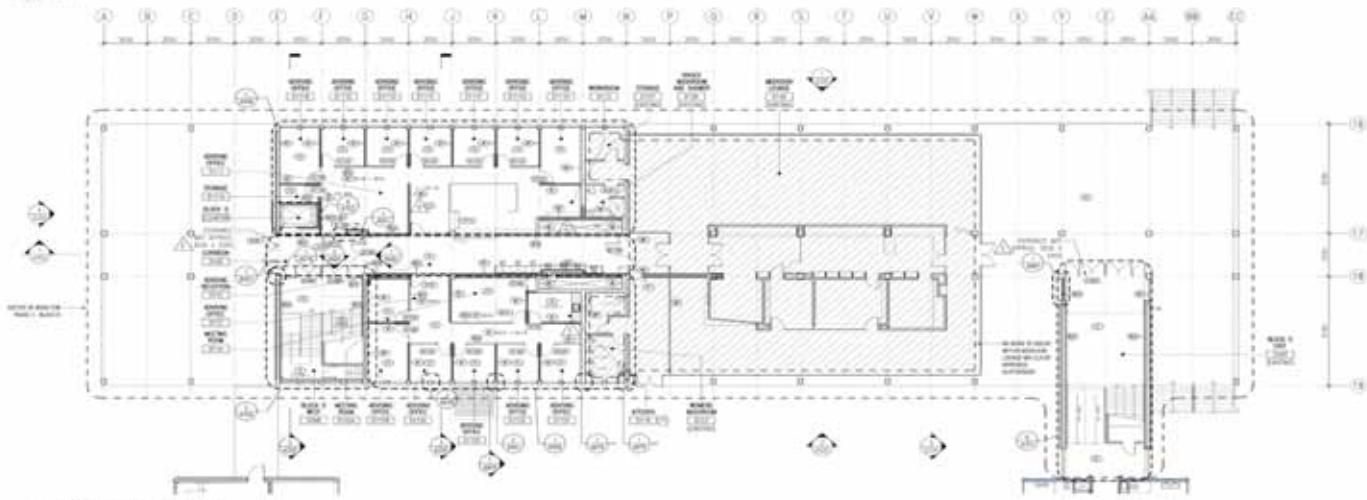


RENEW - BLOCK C

source: BUSBY PERKINS + WILL



1 FLOOR PLAN: BLOCK D BASEMENT
DATE: 1/20



2 FLOOR PLAN: BLOCK D LEVEL 1
DATE: 1/20

NOTES A100 SERIES:
 1. CONSULT THE ARCHITECT'S NOTES FOR A COMPLETE LIST OF NOTES.
 2. THE CONTRACTOR SHALL BE RESPONSIBLE FOR OBTAINING ALL NECESSARY PERMITS AND APPROVALS FROM THE LOCAL AUTHORITY.
 3. THE CONTRACTOR SHALL BE RESPONSIBLE FOR OBTAINING ALL NECESSARY PERMITS AND APPROVALS FROM THE LOCAL AUTHORITY.
 4. THE CONTRACTOR SHALL BE RESPONSIBLE FOR OBTAINING ALL NECESSARY PERMITS AND APPROVALS FROM THE LOCAL AUTHORITY.
 5. THE CONTRACTOR SHALL BE RESPONSIBLE FOR OBTAINING ALL NECESSARY PERMITS AND APPROVALS FROM THE LOCAL AUTHORITY.
 6. THE CONTRACTOR SHALL BE RESPONSIBLE FOR OBTAINING ALL NECESSARY PERMITS AND APPROVALS FROM THE LOCAL AUTHORITY.
 7. THE CONTRACTOR SHALL BE RESPONSIBLE FOR OBTAINING ALL NECESSARY PERMITS AND APPROVALS FROM THE LOCAL AUTHORITY.
 8. THE CONTRACTOR SHALL BE RESPONSIBLE FOR OBTAINING ALL NECESSARY PERMITS AND APPROVALS FROM THE LOCAL AUTHORITY.
 9. THE CONTRACTOR SHALL BE RESPONSIBLE FOR OBTAINING ALL NECESSARY PERMITS AND APPROVALS FROM THE LOCAL AUTHORITY.
 10. THE CONTRACTOR SHALL BE RESPONSIBLE FOR OBTAINING ALL NECESSARY PERMITS AND APPROVALS FROM THE LOCAL AUTHORITY.

LEGEND A100 SERIES:

- CONCRETE
- ▨ BRICK
- ▧ GLASS
- ▩ METAL
- WOOD
- CERAMIC
- ▬ PLASTER
- ▭ GYPSUM BOARD
- ▮ INSULATION
- ▯ MECHANICAL EQUIPMENT
- ▰ ELECTRICAL EQUIPMENT
- ▱ MECHANICAL EQUIPMENT
- ▲ MECHANICAL EQUIPMENT
- △ MECHANICAL EQUIPMENT
- ▴ MECHANICAL EQUIPMENT
- ▵ MECHANICAL EQUIPMENT
- ▾ MECHANICAL EQUIPMENT
- ▿ MECHANICAL EQUIPMENT

BUSBY PERKINS + WILL
 1000 Avenue of the Stars
 Suite 1000
 New York, NY 10020
 Tel: 212 512 2000
 Fax: 212 512 2001
 www.busbyperkins.com

Buchanan Renovation
 UBC
 PHASE 1
 BLOCK D

Rev	Description	Date
1	ISSUED FOR PERMITTING	01/20/20
2	ISSUED FOR PERMITTING	01/20/20
3	ISSUED FOR PERMITTING	01/20/20
4	ISSUED FOR PERMITTING	01/20/20
5	ISSUED FOR PERMITTING	01/20/20
6	ISSUED FOR PERMITTING	01/20/20
7	ISSUED FOR PERMITTING	01/20/20
8	ISSUED FOR PERMITTING	01/20/20
9	ISSUED FOR PERMITTING	01/20/20
10	ISSUED FOR PERMITTING	01/20/20

Sheet Information
 Date: 01/20/20
 Job Number: 1000
 Project: Buchanan Renovation
 Drawing: A100
 Title: FLOOR PLANS: BLOCK D BASEMENT + LEVEL 1

RENEW - BLOCK D

source: BUSBY PERKINS + WILL

150 most commonly used words in the faculty of arts course descriptions (winter 2008)

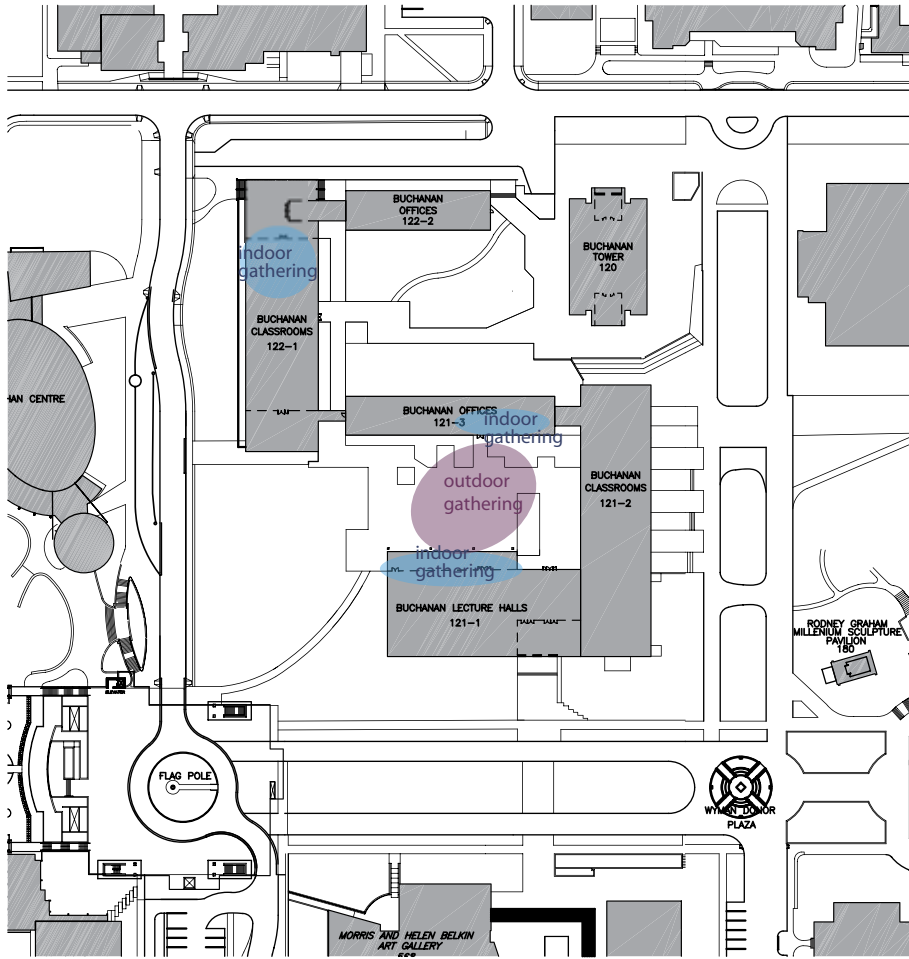
economy / economic	557	production	45	sociological	19
geography / geographic / geographical	382	theatre	44	digital	18
asia / asian	325	nation	43	income	18
social	324	structure	42	market	18
psychology / psychological	271	women	42	trade	18
french	260	classical	40	understand	18
philosophy / philosophical	242	human	40	democracy	17
engl	233	literacy	39	ethnographic	17
literature	204	text	39	feminist	17
china	203	america / american	38	sculpture	17
history	198	europa	37	fiction	16
anthropology / anthropological	194	paint	37	govern	16
language	183	design	36	jewish	16
political	168	math	36	non-heritage	16
cultural	164	war	36	relationship	16
chinese	150	britain / british	35	creative	15
culture	139	environ	34	draw	15
modern	134	family	34	east	15
research	121	korea / korean	34	health	15
write	113	latin	34	islam / islamic	15
contemporary	111	architecture	33	moral	15
work	110	comparative	32	phonetic	15
policy	104	present	32	poetry	15
politics	86	organization	31	print	15
relation	84	science	31	region	15
system	79	state	30	urban	15
society	78	thought	30	behaviour	14
international	76	ancient	29	consult	14
canada / canadian	73	public	29	nest	14
century	73	gender	28	north	14
historical	72	linguistic	28	theoretical	14
japan / japanese	72	spanish	28	cinema	13
german	70	intensive	27	columbia	13
visual	70	growth	24	india	13
change	69	medieval	24	interdisciplinary	13
first	67	russian	24	listen	13
problem	61	studio	24	open	13
grammar	60	survey	24	performance	13
tradition / traditional	60	media	23	syntax	13
greek	59	technique	23	website	13
art	57	world	23	costume	12
context	57	logic	22	hindi	12
religion / religious	56	pronunciation	21	institution	12
translation	56	drama	20	intellectual	12
reading	55	heritage	20	labour	12
skill	53	knowledge	20	mandarin	12
archaeological / logy	52	law	20	physical	12
oral	49	period	20	processe	12
roman / rome	49	revolution	20	punjabi	12
italian	47	semantic	19	city	11

relative student populations of departments in arts



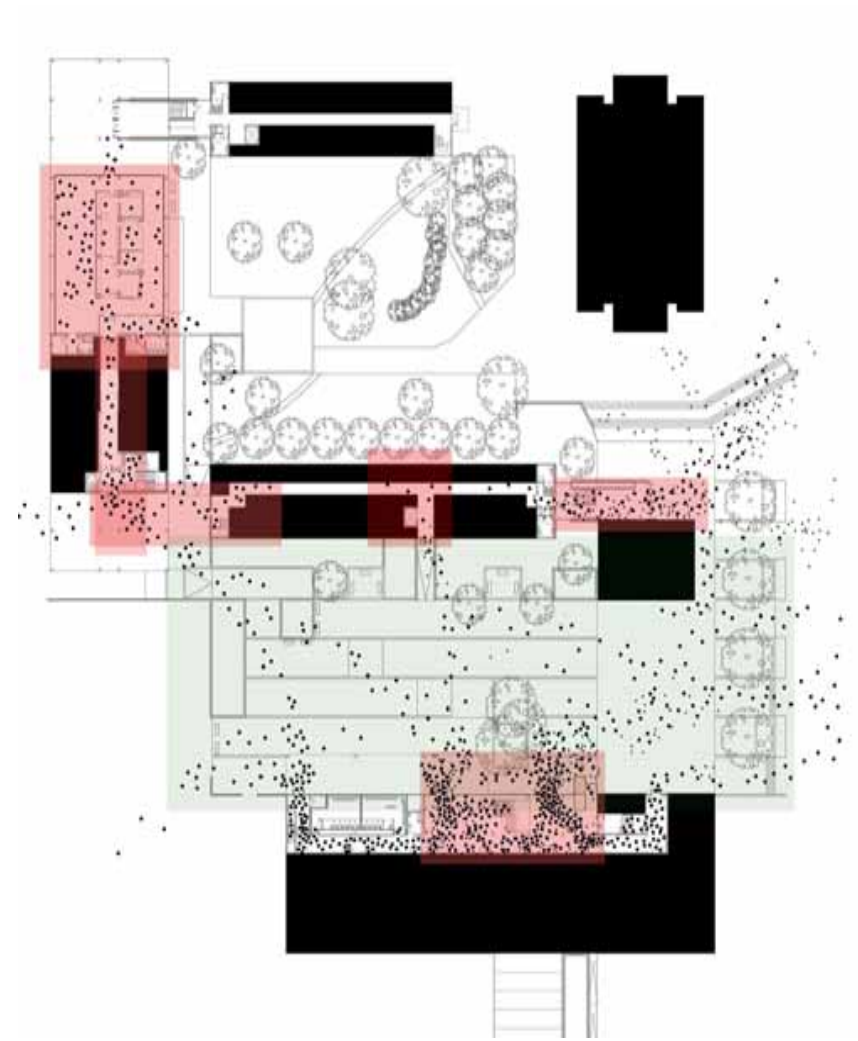
DEPARTMENTAL DEMOGRAPHIC

source: Environmental Design 401 studio



PLACES OF INTEREST & GATHERING

source: CAMPUS & COMMUNITY PLANNING



GROUND FLOOR - STUDENT SERVICES

source: Buchanan Renew ; Busby Perkins Will

3.1.3 Architectural Design: Learning + Working, Community, Environment

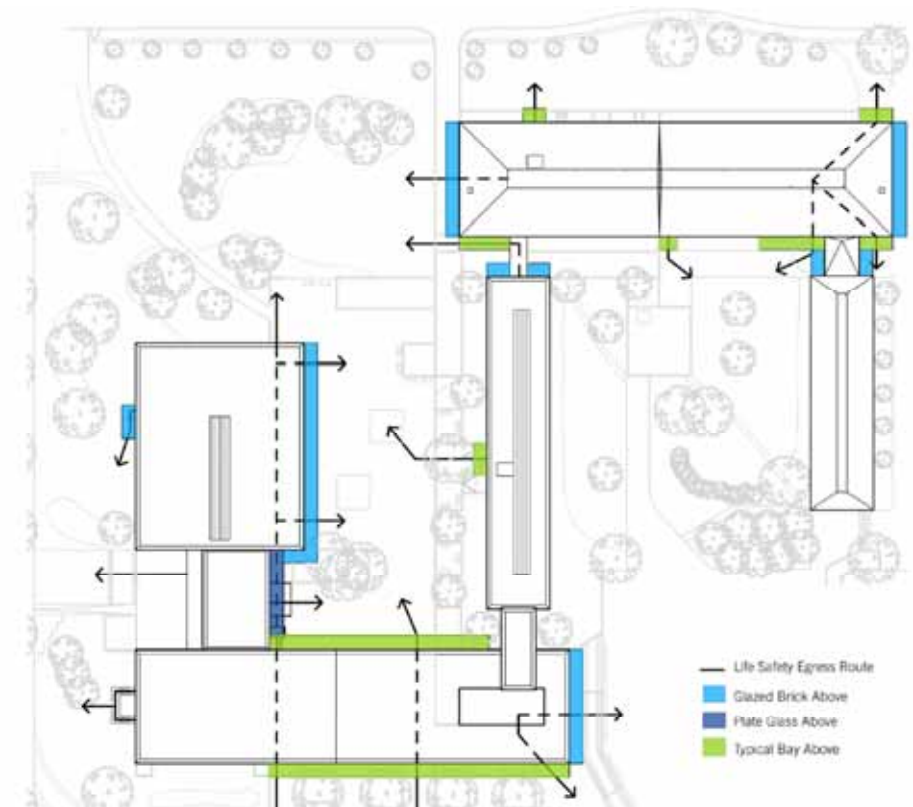
Our design proposal for the Buchanan Renovation is motivated by three scales of activity that affect the user's experience of the buildings: learning + working, community, and environment. First, the Buchanan Complex must comfortably host the daily activities of its users. Second, it must host a broad and diverse community of users as well as represent and nurture a public identity for that community. Third, it must respond to its global context by performing to the highest environmental criteria in terms of its function and its materiality.

Learning + Working

The first key to improving the learning and working conditions is clarifying the organization of the buildings' parts. The renovation will introduce a more distinct vertical gradation of public to private, starting on the ground level where the newly consolidated faculty services are spread throughout the blocks. In Block A, there will be a new espresso bar, taking advantage of the high student traffic flowing in and out of the lecture halls and the adjacency to the courtyard. Block B will have reconfigured computer labs, both bookable and drop-in, on the west side and a newly defined Dean's Office on the east side, more recognizable as such with improved signage and a better entrance. Block C will house the newly consolidated IS/IT hub, with centralized help desks and access to the many resources available to faculty and students, as well as the Arts Co-op Program, which looks to play an increasing role in providing a balanced educational experience for Arts students. The Arts Undergraduate Advising Services will be located next door in Block D, completing the network of undergraduate student services that began with the creation of the Meekison Lounge a few years ago. As you move up through the building, the program becomes less and less public and the volume of traffic dissipates. The largest lecture halls (with the exception of one) will be on level 1 of Block A. Level 2 of all four buildings will still be connected internally by a continuous corridor, making the traffic volume on this floor high. Level 2 and 3 will have a mix of classroom sizes. Block C level 2 will contain the Department of Classics, Near Eastern and Religious Studies (CNERS), which enjoys the exposure they receive from being on this high-traffic level. Levels 3 and 4 of Block C will contain offices and Reading Rooms for CNERS and Political Science.

provide a healthy, comfortable, safe environment for working and teaching: clean air, access to fresh air and sunlight, user-controlled systems, access to nature, good acoustics

FIGURE 3.1.4.1: ENVELOPE UPGRADE DIAGRAM



BUCHANAN RENEW -SIGNIFICANT SPACE PROGRAMMING

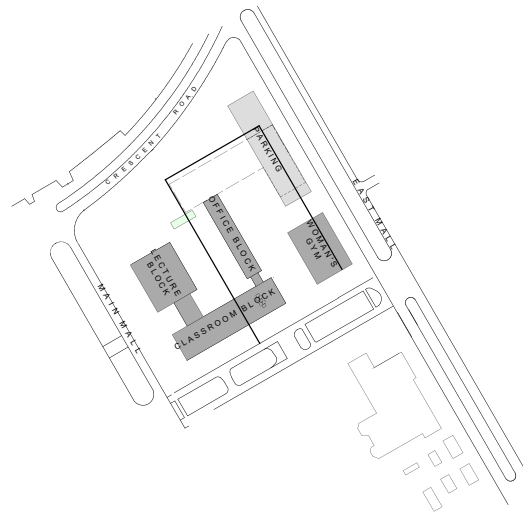
source: Buchanan Renew ; Busby Perkins Will

BUCHANAN RENEW -ENVELOPE UPGRADE

source: Buchanan Renew ; Busby Perkins Will



VIEWS ALONG UNFOLDED SECTION



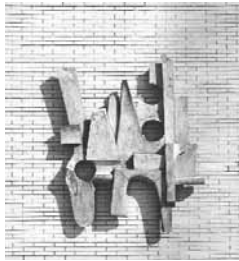
BUCHANAN BUILDING PLAN: 1958
BLOCKS A, B & C

SITE CHARACTER AND HISTORY

source: Environmental Design 401 studio



Mountain Goats, 19-



Configuration, 1960



Dancing Figures, 1958



Asiatic Head, 1960



Three Forms, 1956



Mountain Goats, 19-



Dancing Figures, 195-



The Miner, 1958



Fulfillment, 195-



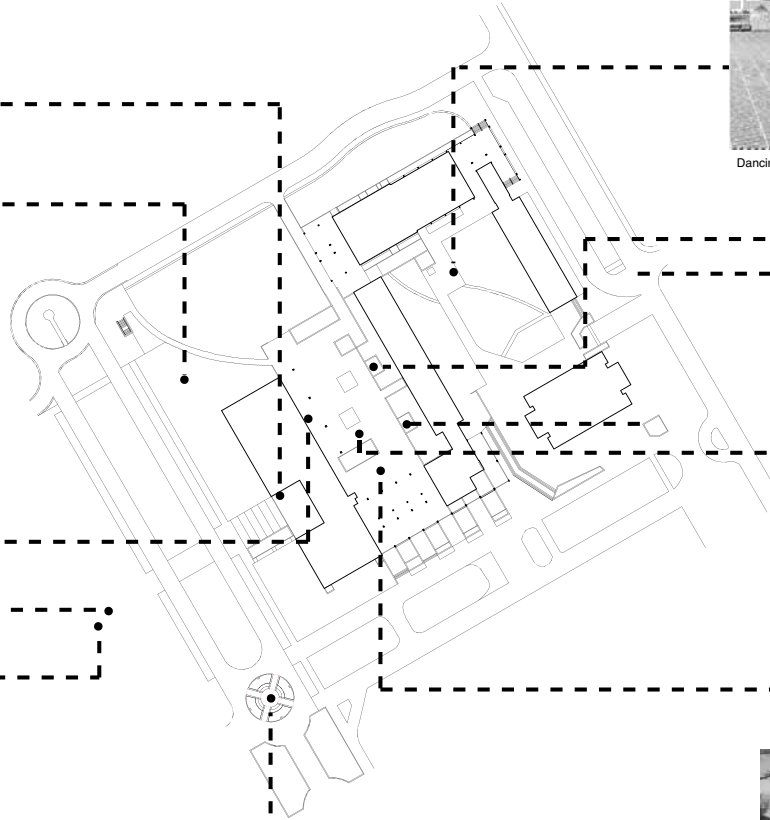
Fertility 195-



Toxic Freedom, 1996

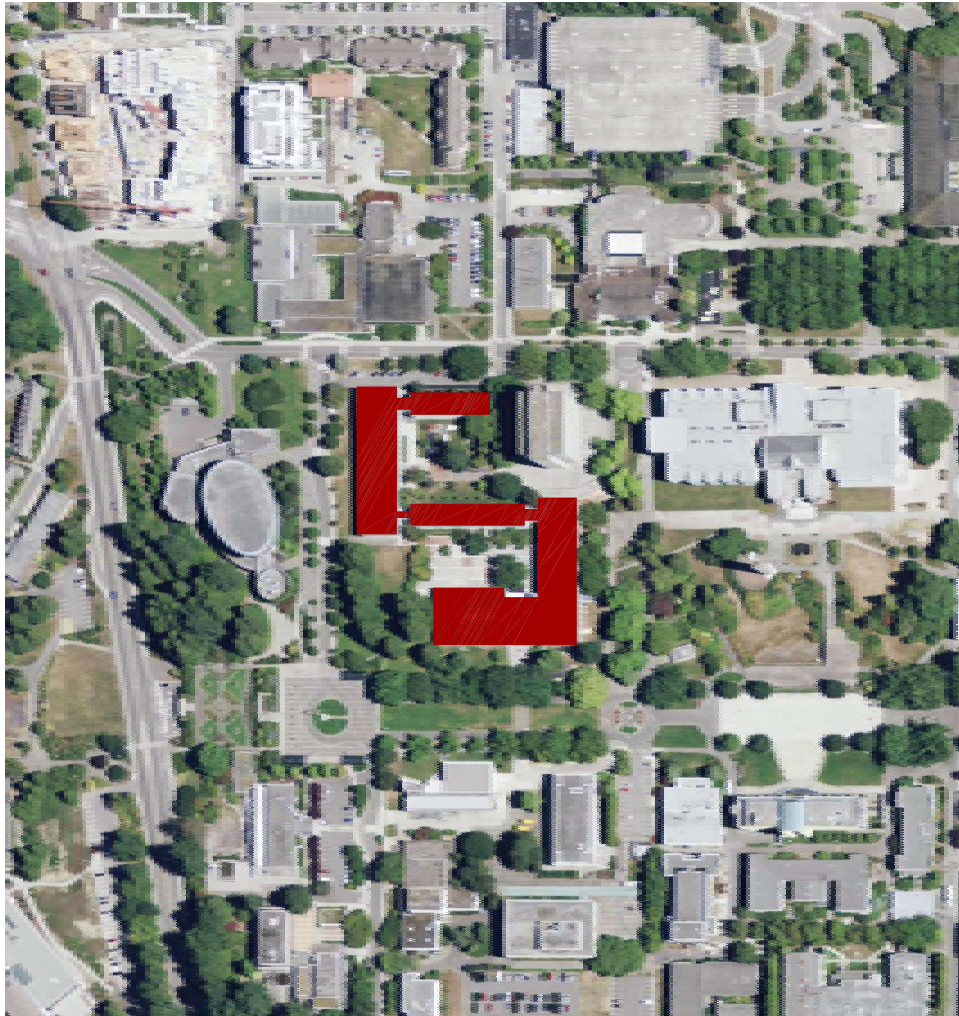


Unidentified, 1958

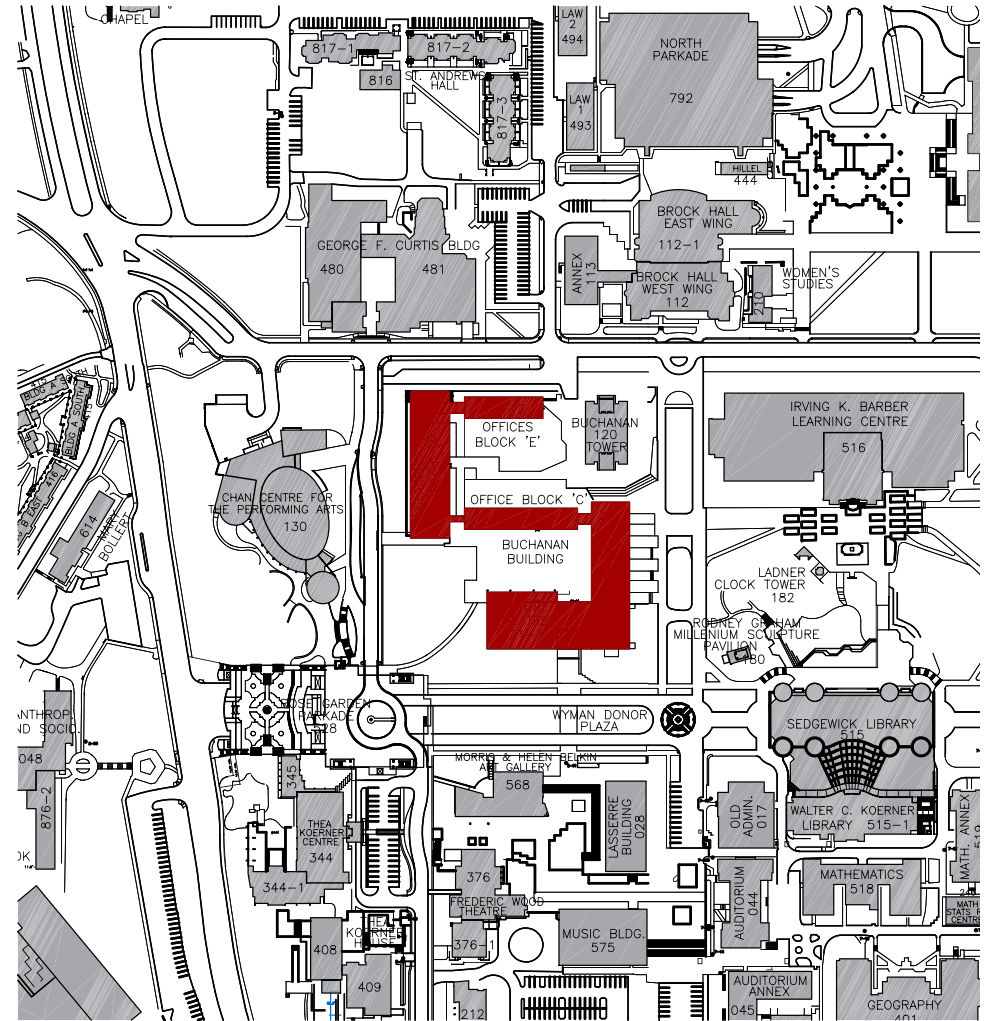


HISTORIC OUTDOOR SCULPTURE

source: Environmental Design 401 studio



CONTEXT - AERIAL PHOTO



CONTEXT - CAMPUS BUILDINGS



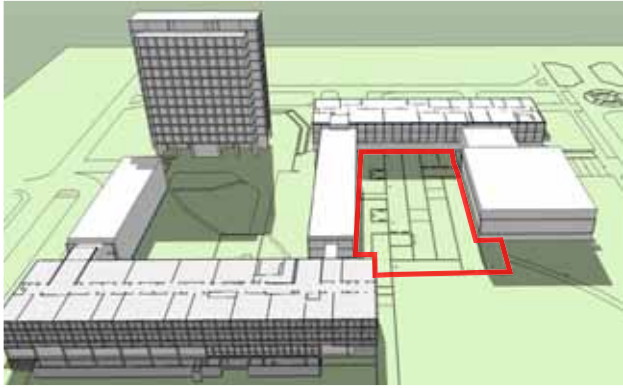
Buchanan east courtyard



SITE PHOTOS AND KEY SIGHTLINES



source: CAMPUS & COMMUNITY PLANNING

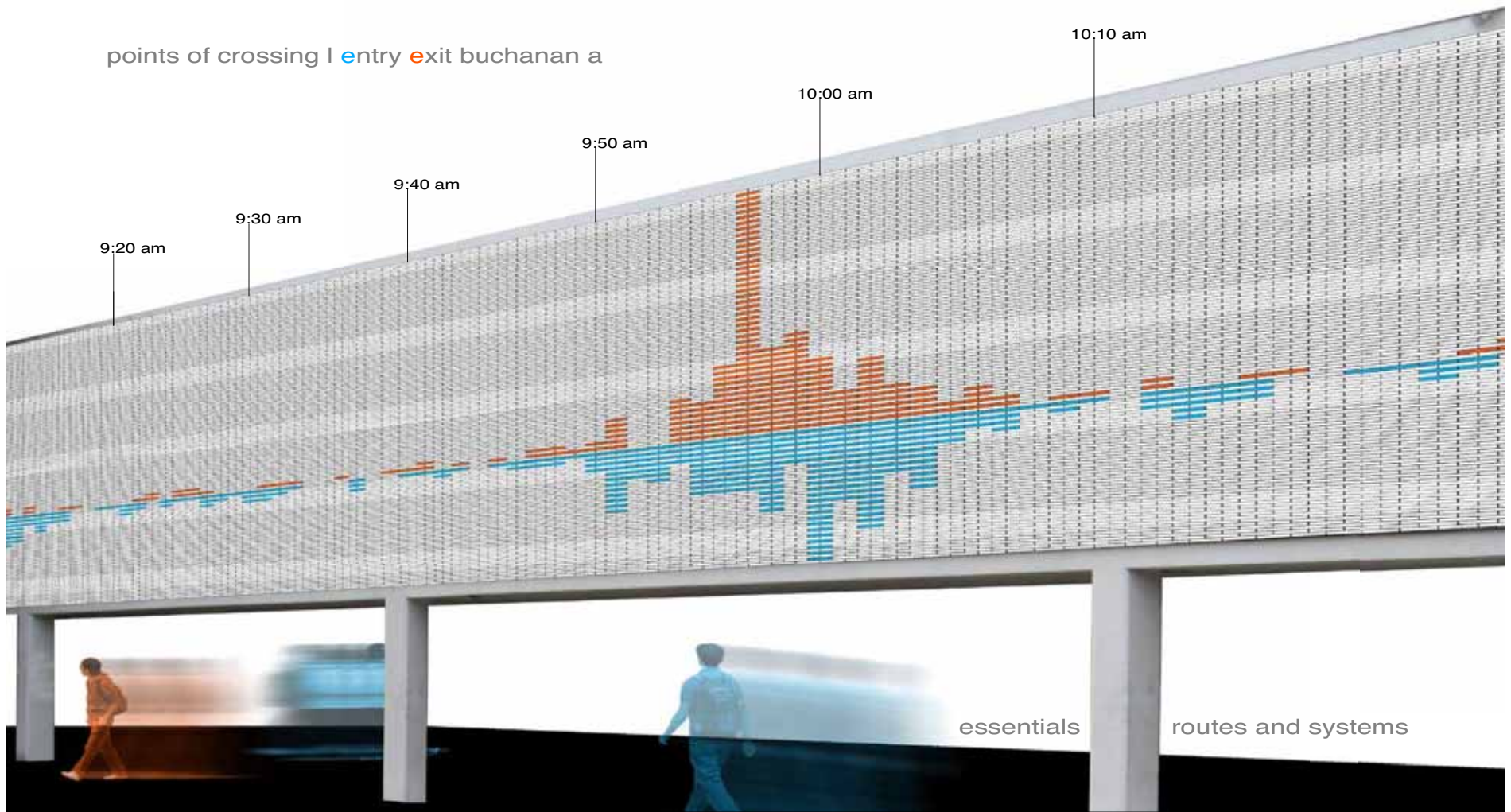


Buchanan west courtyard



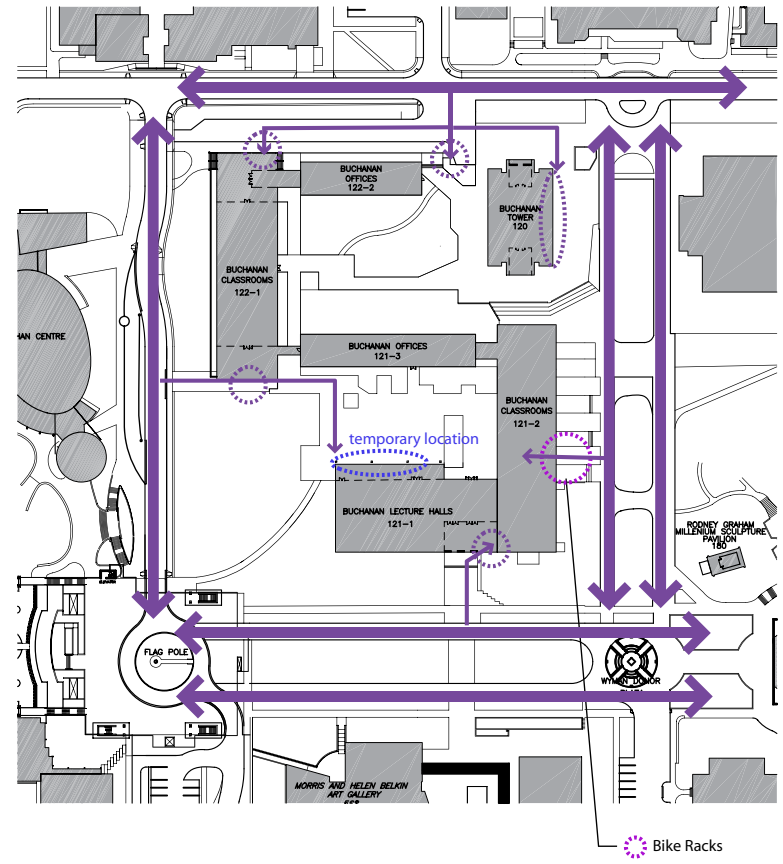
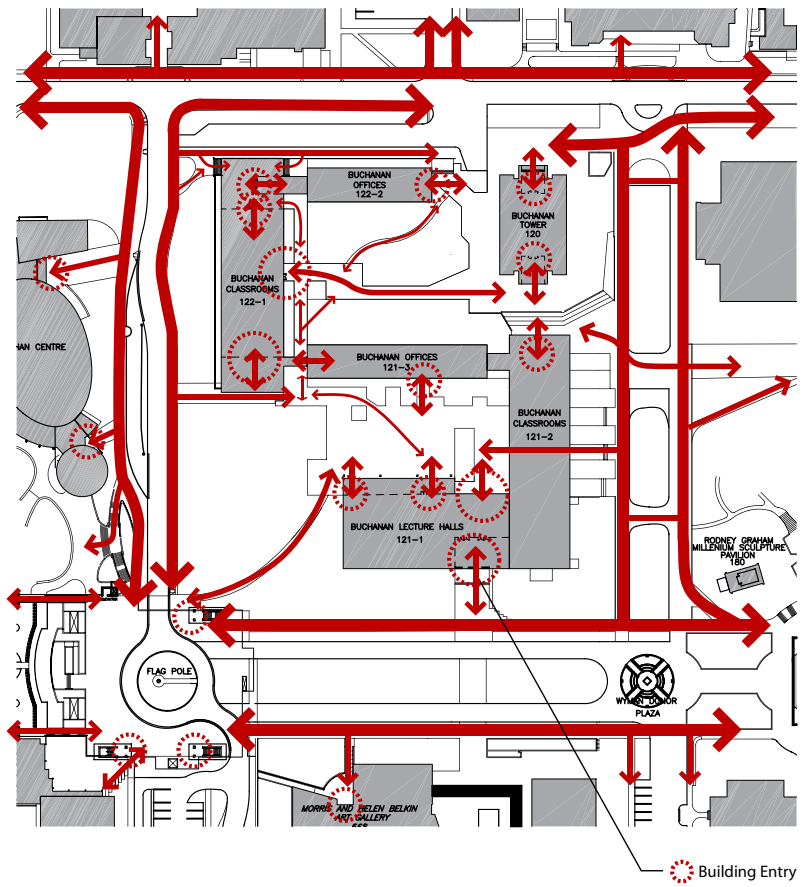
SITE PHOTOS AND KEY SIGHTLINES

source: CAMPUS & COMMUNITY PLANNING



INTENSITY OF DAILY ACCESS

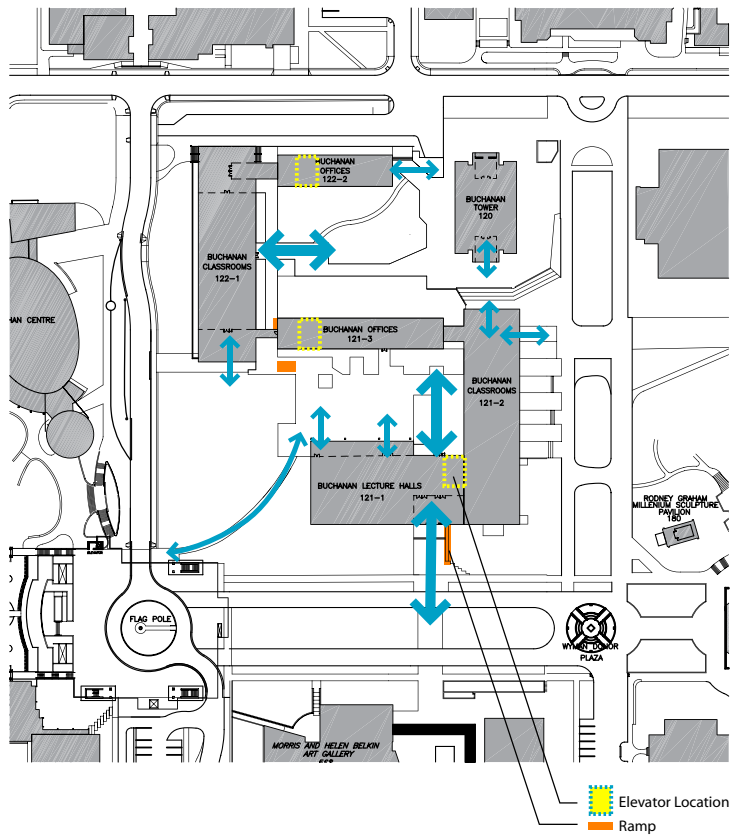
source: Environmental Design 401 studio



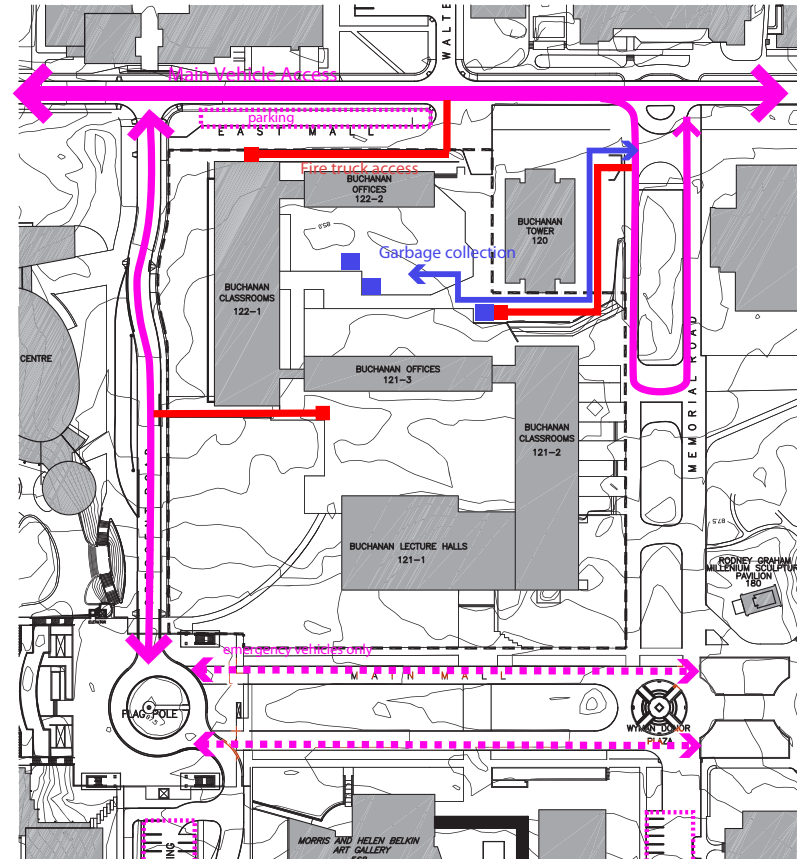
PEDESTRIAN CIRCULATION AND GROUND FLOOR PLAN

BICYCLE CIRCULATION

source: CAMPUS & COMMUNITY PLANNING



UNIVERSAL ACCESS



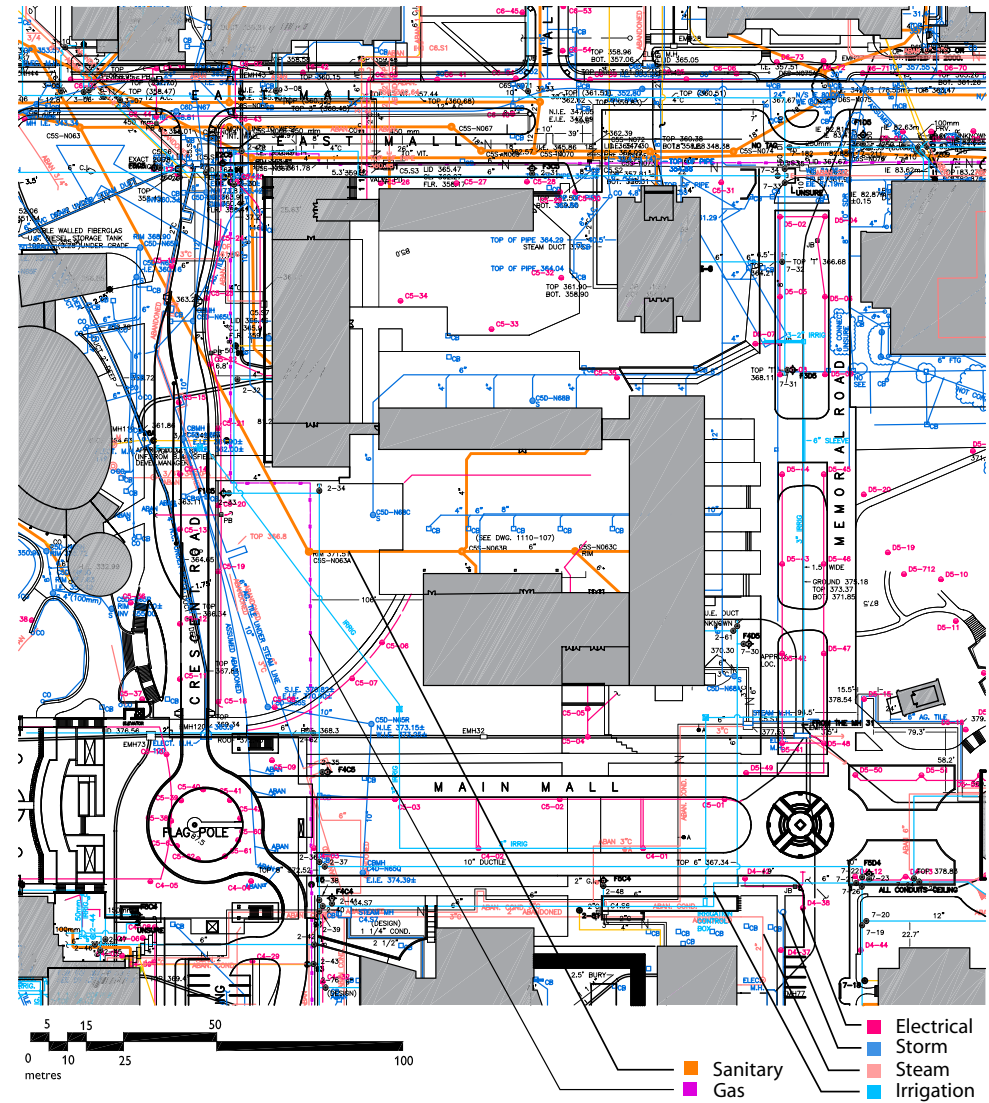
VEHICLE CIRCULATION / Services

source: CAMPUS & COMMUNITY PLANNING

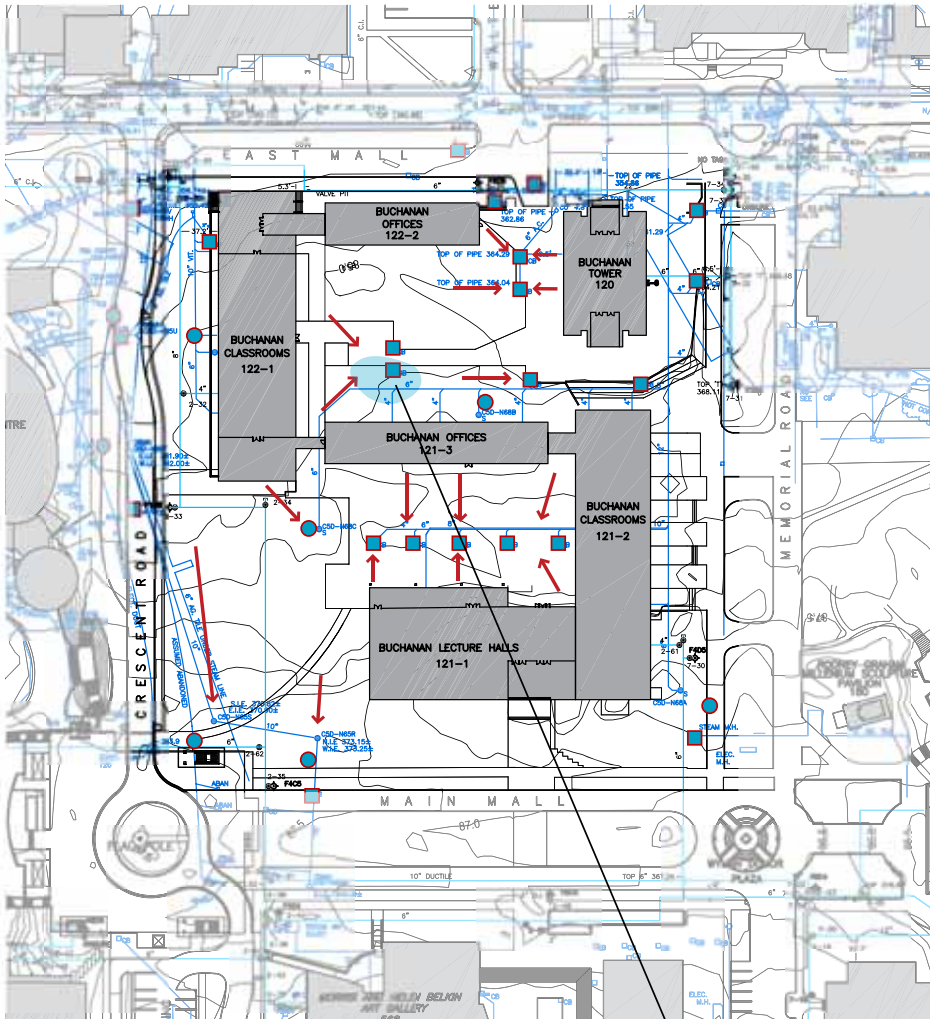


PREVAILING WINDS

source: Environmental Design 401 studio



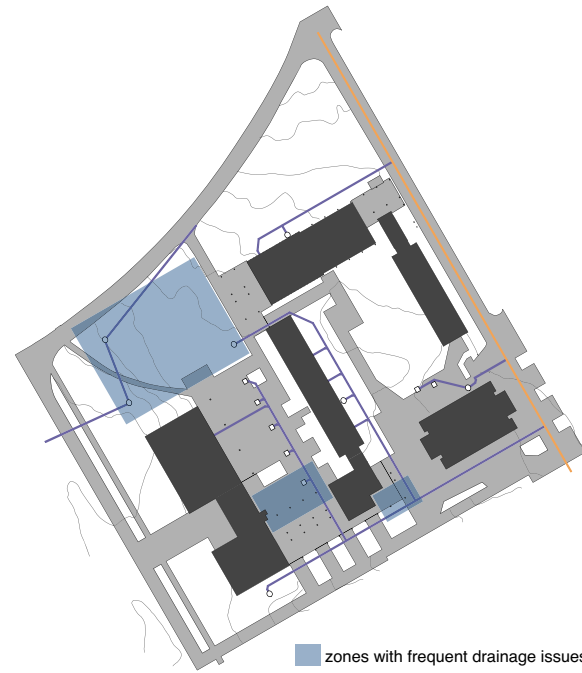
UTILITIES



Area Drains Poorly

- Storm / Manhole
- Catch Basin

DRAINAGE

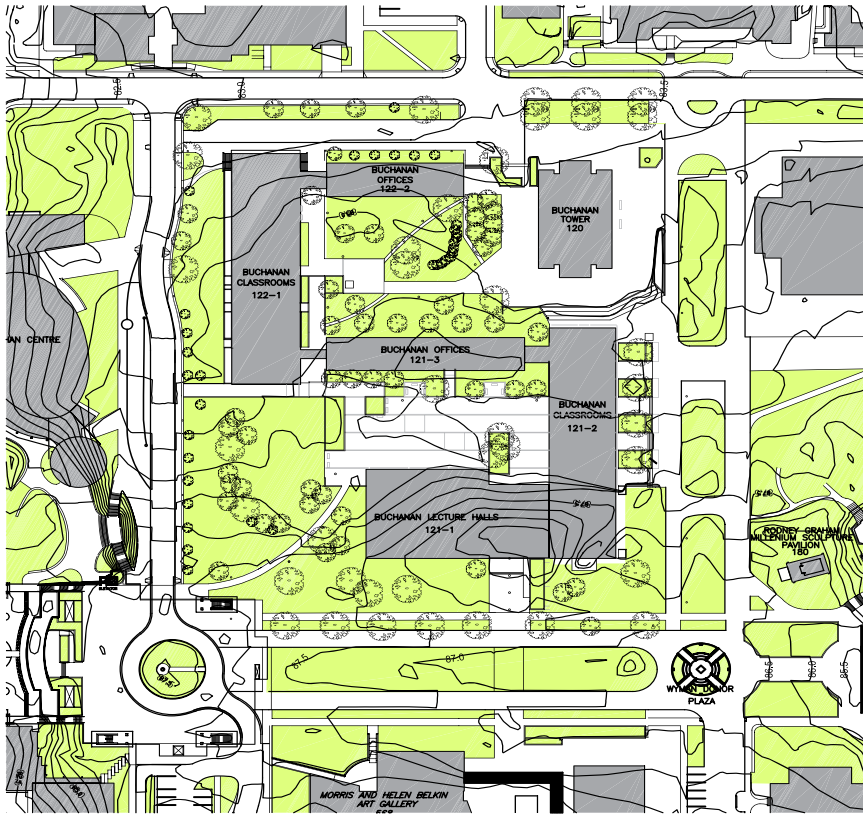


■ zones with frequent drainage issues

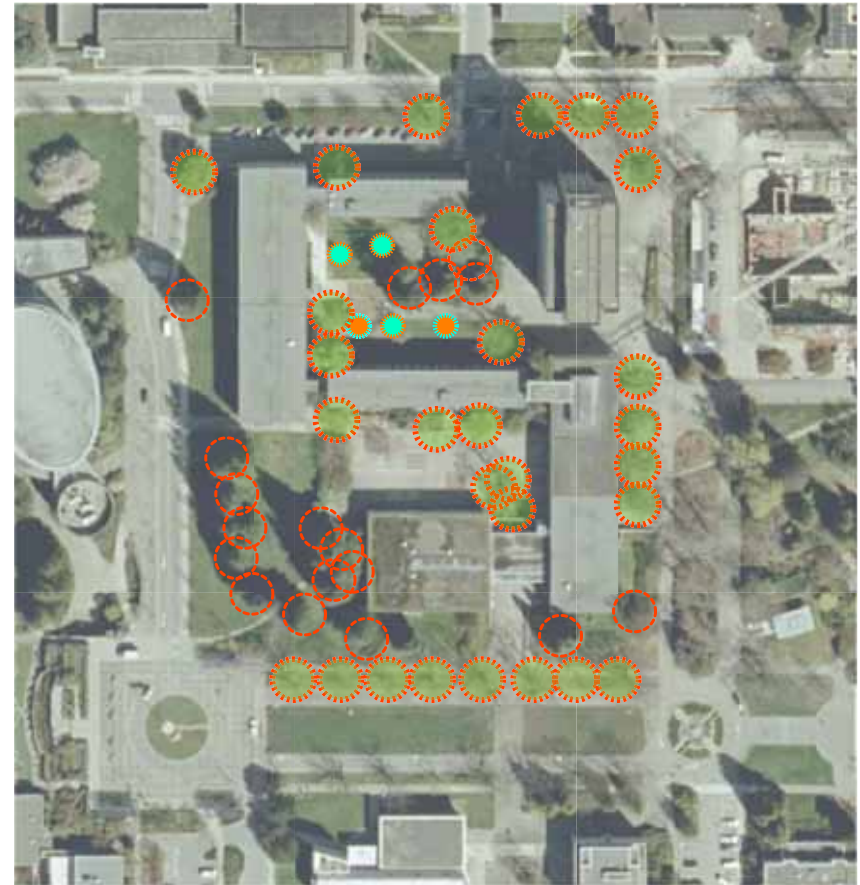


contextualizing monthly precipitation

source: Environmental Design 401 studio



TREE LOCATION



-  memorial tree
-  grad class tree
-  deciduous tree
30 cm + ø caliper
-  evergreen tree
30 cm + ø caliper

SIGNIFICANT TREES

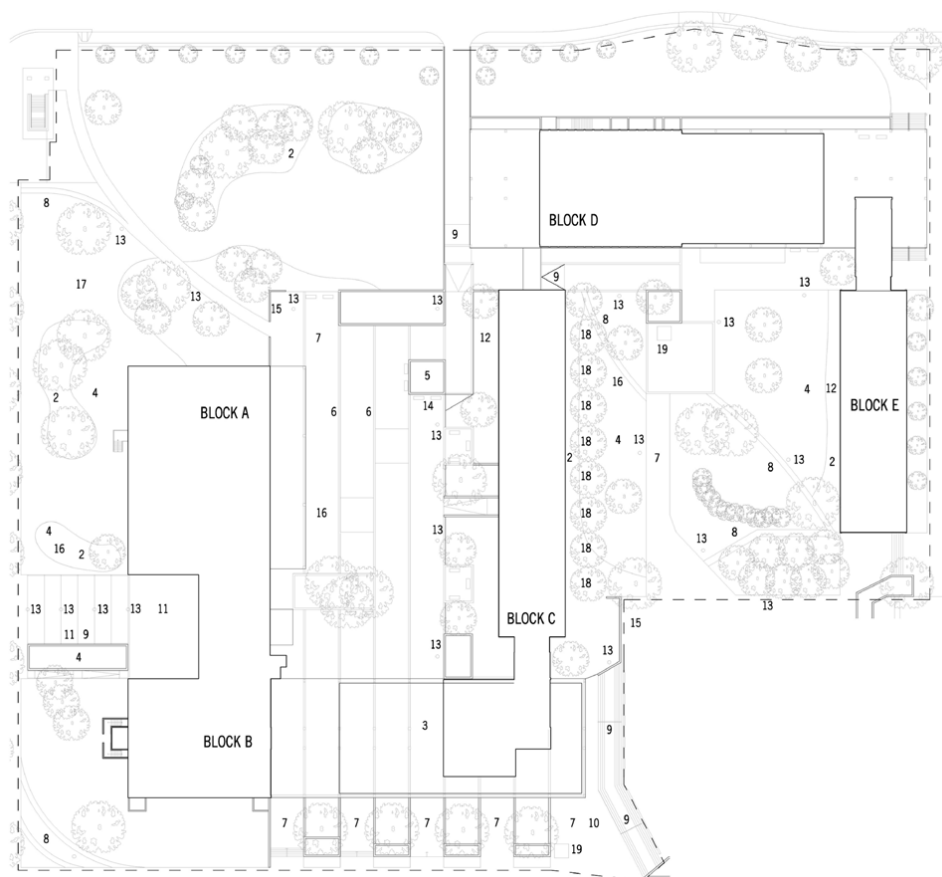


FIGURE 3.1.6.2: ITEM 2, 4 AND 5



FIGURE 3.1.6.2: ITEM 19



FIGURE 3.1.6.3: ITEM 8



FIGURE 3.1.6.4: ITEM 9



FIGURE 3.1.6.5: ITEM 13 AND 14

3.1.6 Site Design

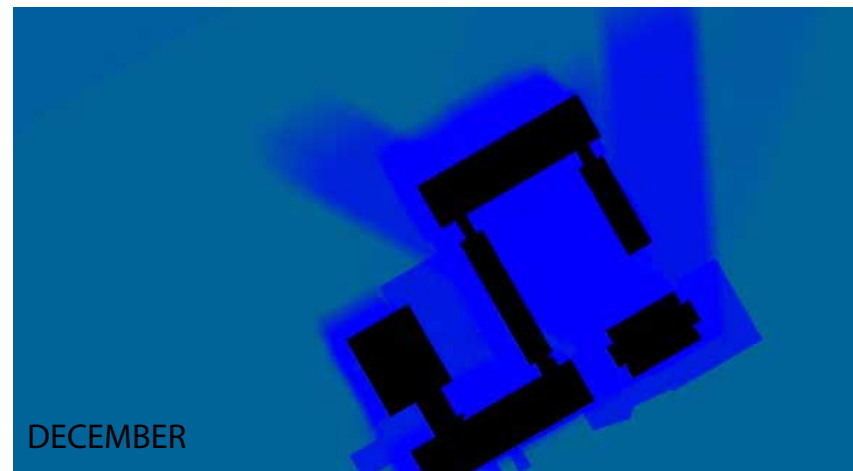
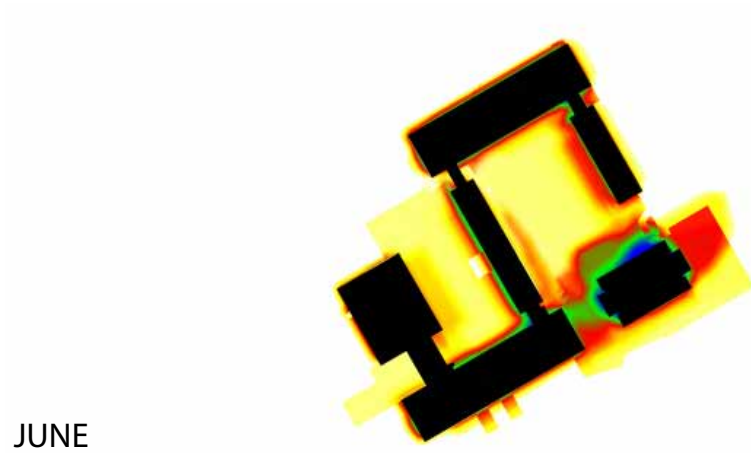
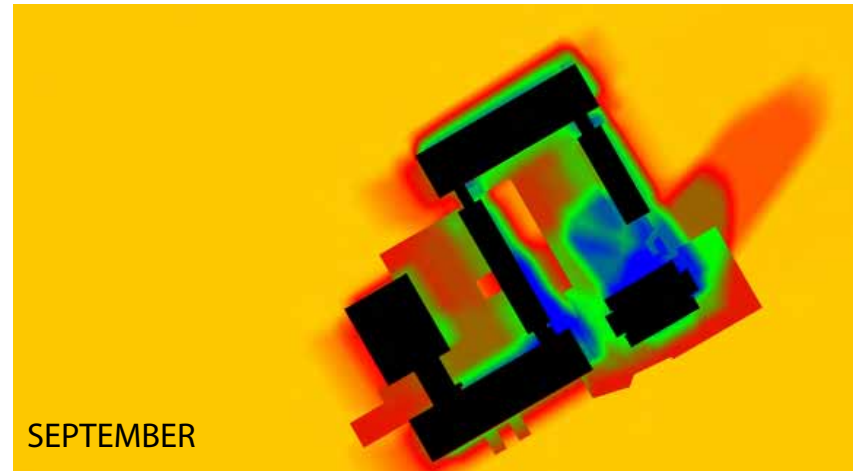
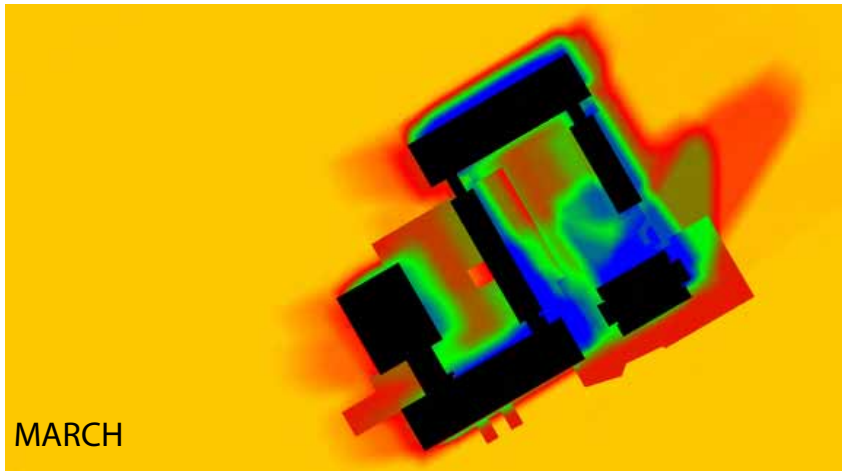
The site design is based on preservation and overall improvement. The courtyard and other landscape features need retrofitting to provide a sustainable and healthy environment for the users of Buchanan, and the renovation provides an opportunity to set an example for green design on the campus, and creating a beautiful setting for these heritage buildings. Aside from refreshing what is already there, these measures will help the site function better in relation to the surrounding ecosystem by improving drainage and capturing rain water for irrigation use. The following steps are proposed:

1. General: preserve existing plant material and open space. Prune where necessary, eliminating dead material and hazardous branches.
2. Remove unsightly shrubs.
3. Encourage moss to grow on all gravel roofs.
4. Top all planters with 50 mm Nutri-mulch. Over-seed disturbed areas of lawn.
5. General: remove tagged plant materials for replacement in planting areas as needed.
6. Storm water management: remove concrete strips in courtyard paving and replace with 150 mm wide galvanized steel trench drains to eliminate puddles.
7. Power wash existing concrete paving in courtyards, as well as planter boxes with raised sides, with water only.
8. Install two rows 500 mm X 500 mm concrete precise pavers with 50 mm grass joints on traffic generated cut-through paths.
9. Replace railings on ramps and steps.
10. Renew paving to match existing.
11. Remove paving and repair membrane above large lecture room with new concrete paving, poured in place. Replace ramp and build new planter.
12. General: install 500 mm perimeter gravel strips held in place by 100 mm x 100 mm wooden header around all buildings for easy access to drains, allowing more light to come into the building where shown on drawing.
13. General: install new down-lighting throughout site to prevent light pollution.
14. Remove old wooden benches and replace with tables and chairs, in proximity to new espresso bar.
15. Install bicycle racks as per specification.
16. Repatriate historic or possibly new works of art in courtyard.
17. Design and install new exterior signage.
18. Plant new Acer Rubrum 'Bowhall' Maple 5 – 6 m.
19. Relocate garbage bins.

preserve legibility of original architecture

SITE DESIGN

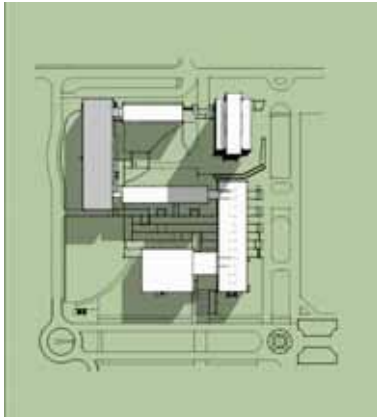
Prepared by Cornelia Hahn Oberlander
source: Buchanan Renew ; Busby Perkins Will



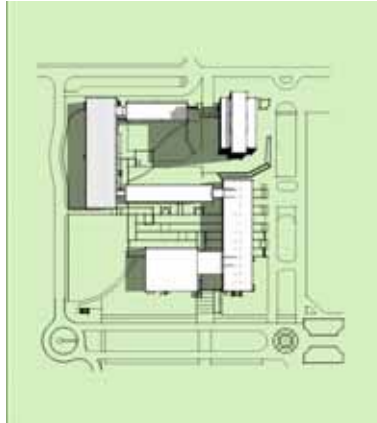
SOLAR GAIN

source: Environmental Design 401 studio

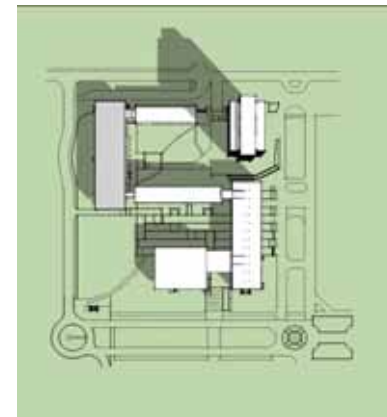
spring equinox



March 20 9 AM

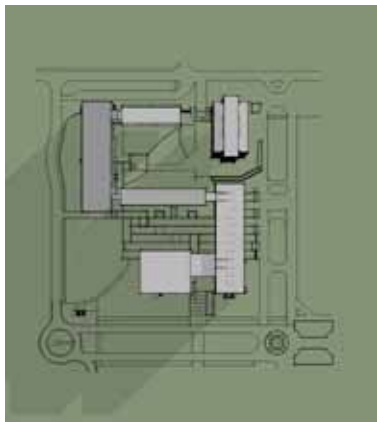


March 20 Noon

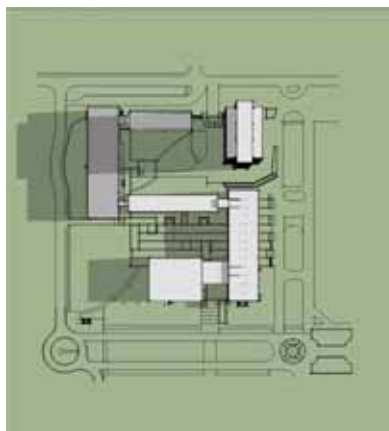


March 20 3 00 PM

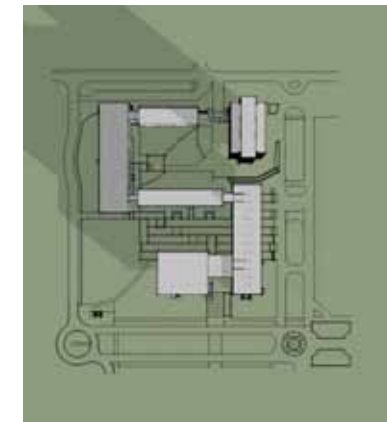
winter solstice



December 21 9 AM



December 21 Noon

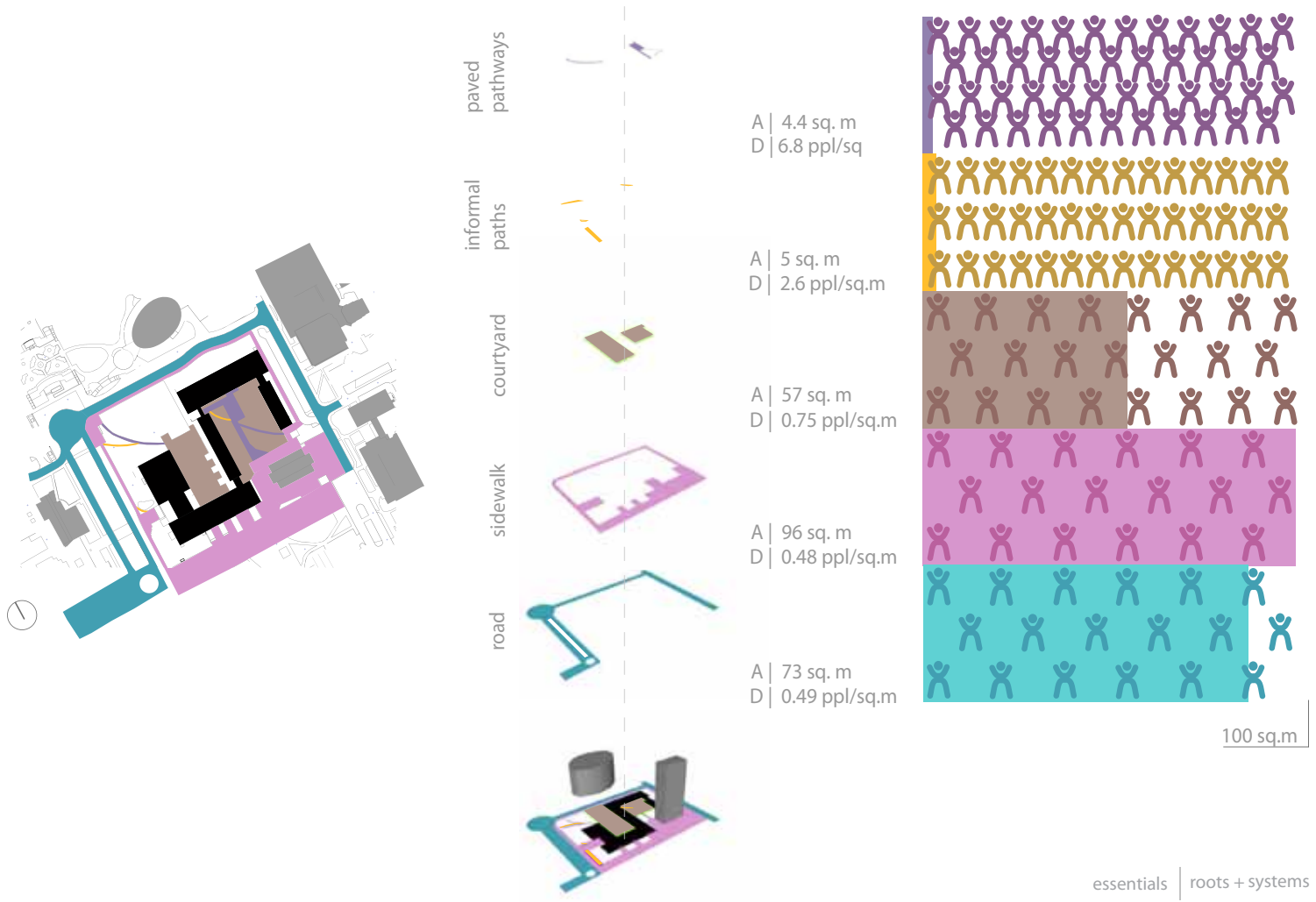


December 21 300 PM

SHADOW STUDY

source: CAMPUS & COMMUNITY PLANNING

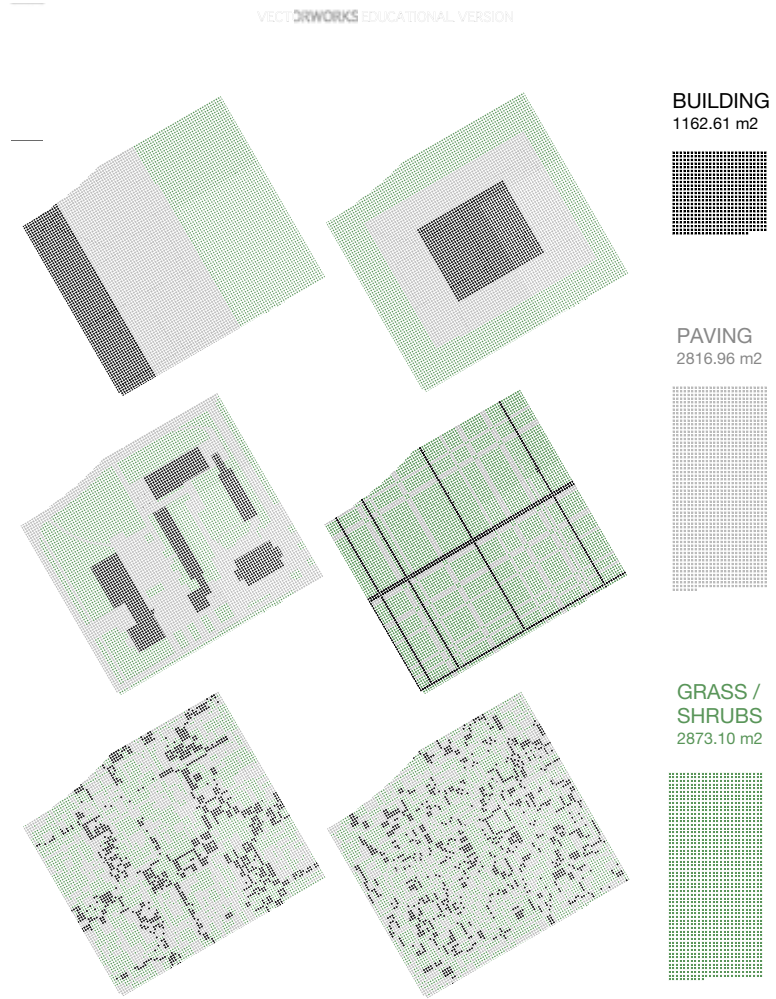
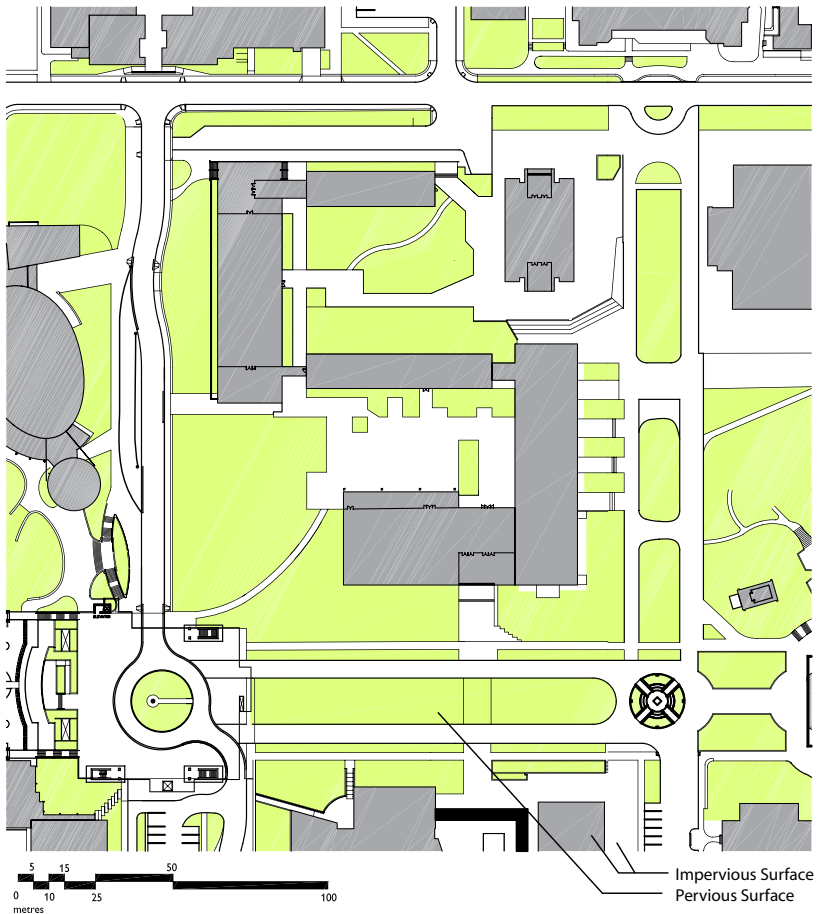
buchanan prestinct area vs usage



essentials | roots + systems

PUBLIC REALM MATERIALS

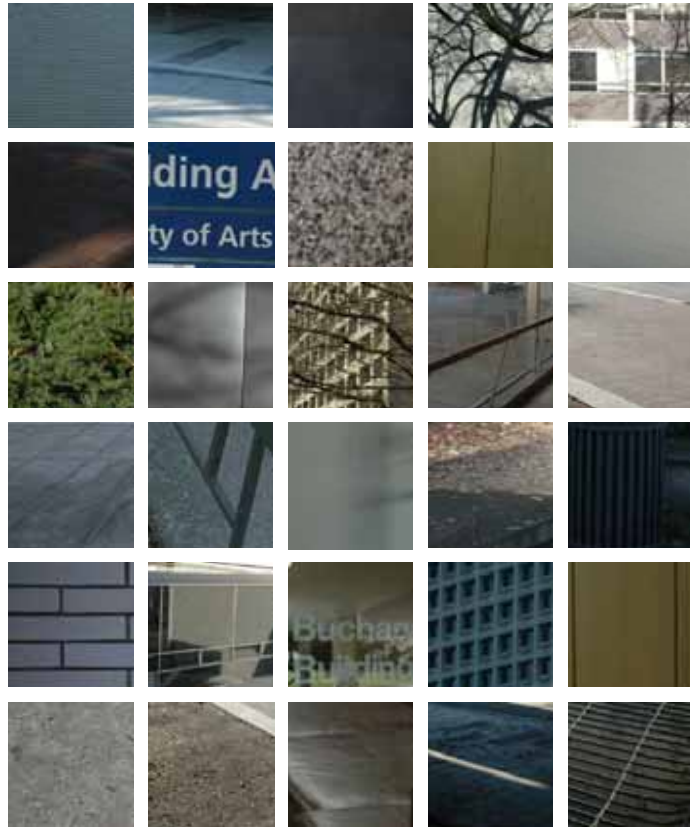
source: Environmental Design 401 studio



BUCHANAN SITE SURFACE MATERIAL AREA STUDY
HYPER-RATIONALITY TOWARDS ENTROPY

PERVIOUS AND IMPERVIOUS SURFACES

source: Environmental Design 401 studio



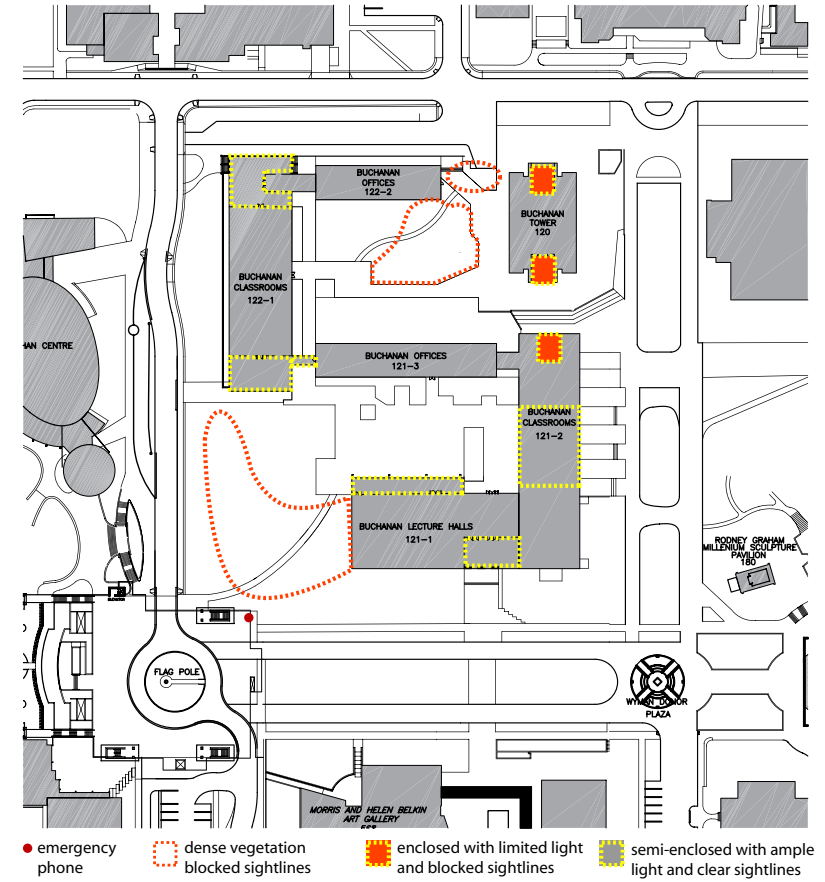
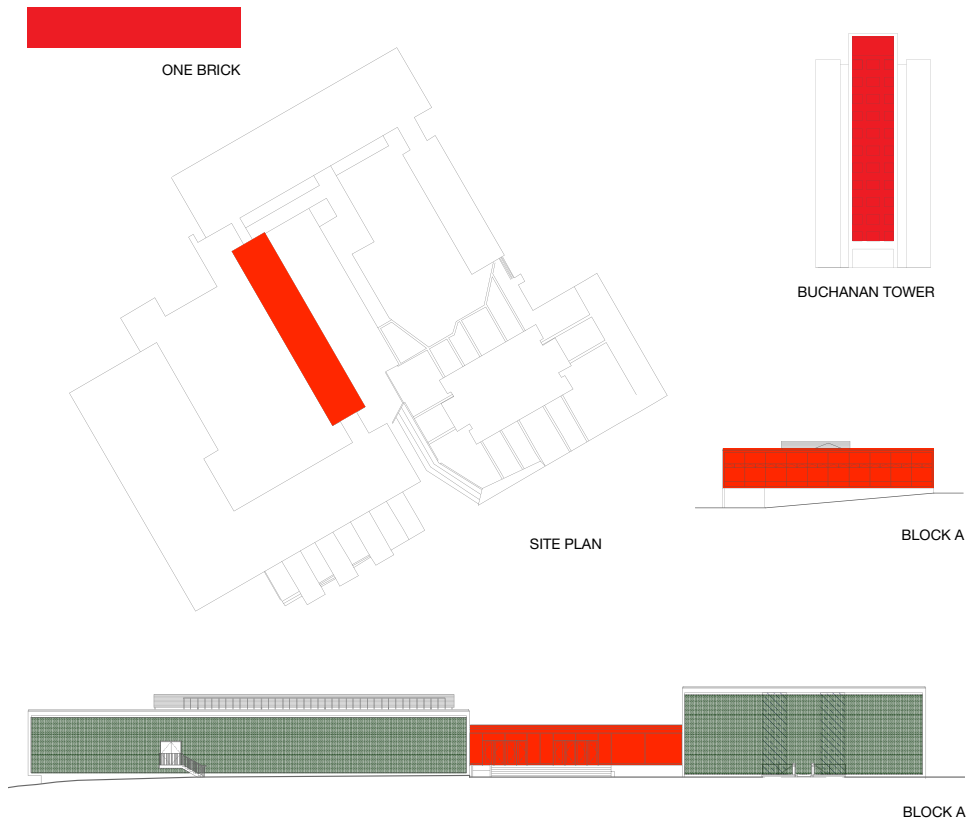
SURFACE LEXICON

source: Environmental Design 401 studio



NIGHT LIGHTING

source: Environmental Design 401 studio



SCALED GEOMETRY

source: Environmental Design 401 studio

PERCEPTUAL SPACE

User Activities and Directions

Input Generated by the UBC Community



On March 22nd, a workshop was held in the Meekison Lounge in the Buchanan Building Complex, with members of the UBC Arts Community led by consultant Stanley King and his Co-Design group. The purpose of the workshop was to generate the activities and users of the courtyards would like to see take place in the Buchanan courtyards. A series of trained facilitators and artists recorded community input both in annotated drawings.

The ideas that emerged were voted upon both at the end of the workshop and in an exhibit running from date to date in the foyer of Buchanan April 1st -3rd. Students, faculty and staff of the Arts community viewed and rated the ideas, indicating which should move forward in the development of the concept plan. Campus and Community Planning then took these ideas and grouped them into the categories shown on the following page. The size of the circles represent the number of positive votes for the ideas that fall into each of the categories. These categories will provide the main themes and ideas that will move forward in the concept design development.

source: CAMPUS & COMMUNITY PLANNING