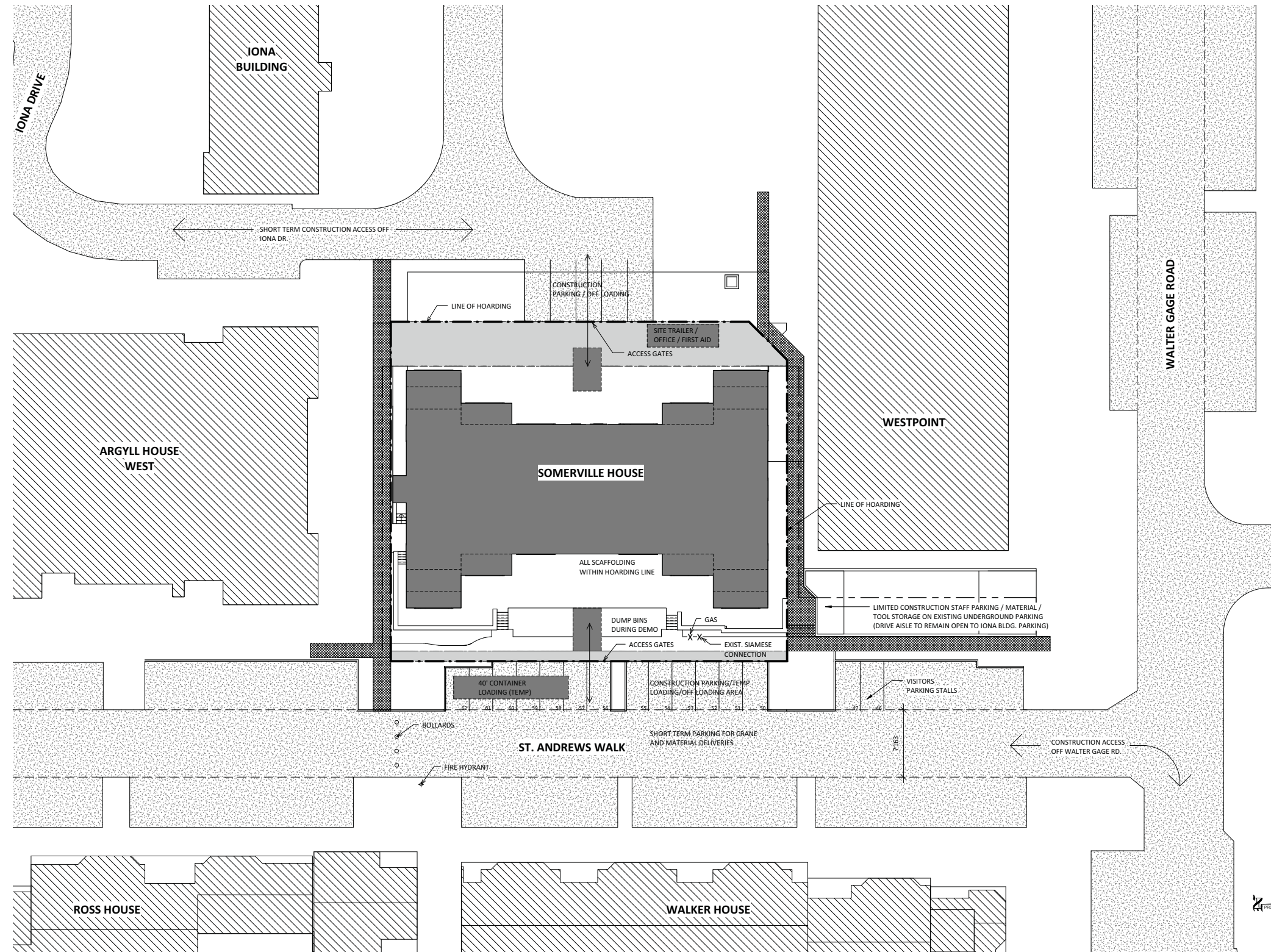


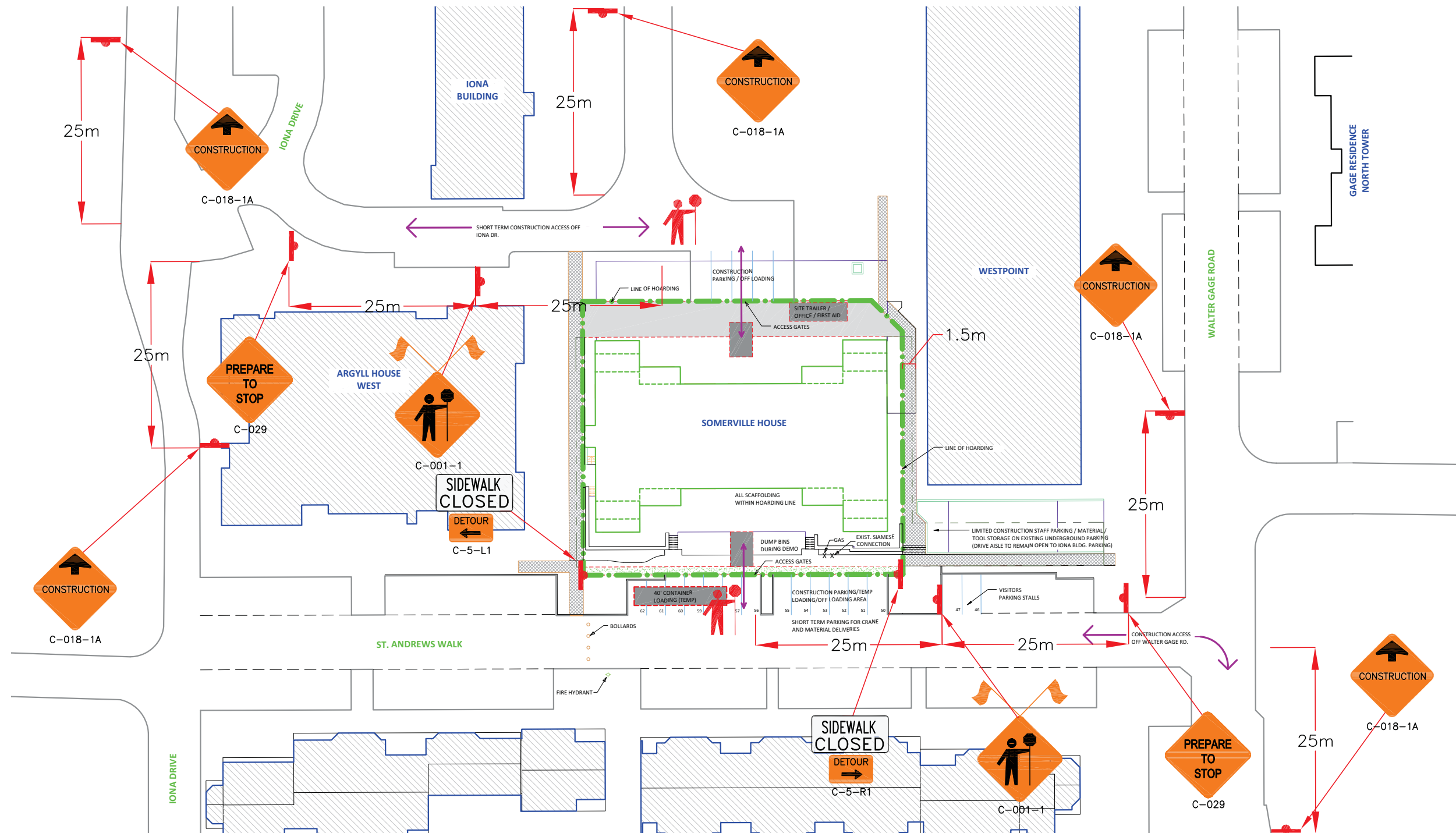
CONSTRUCTION MANAGEMENT PLAN



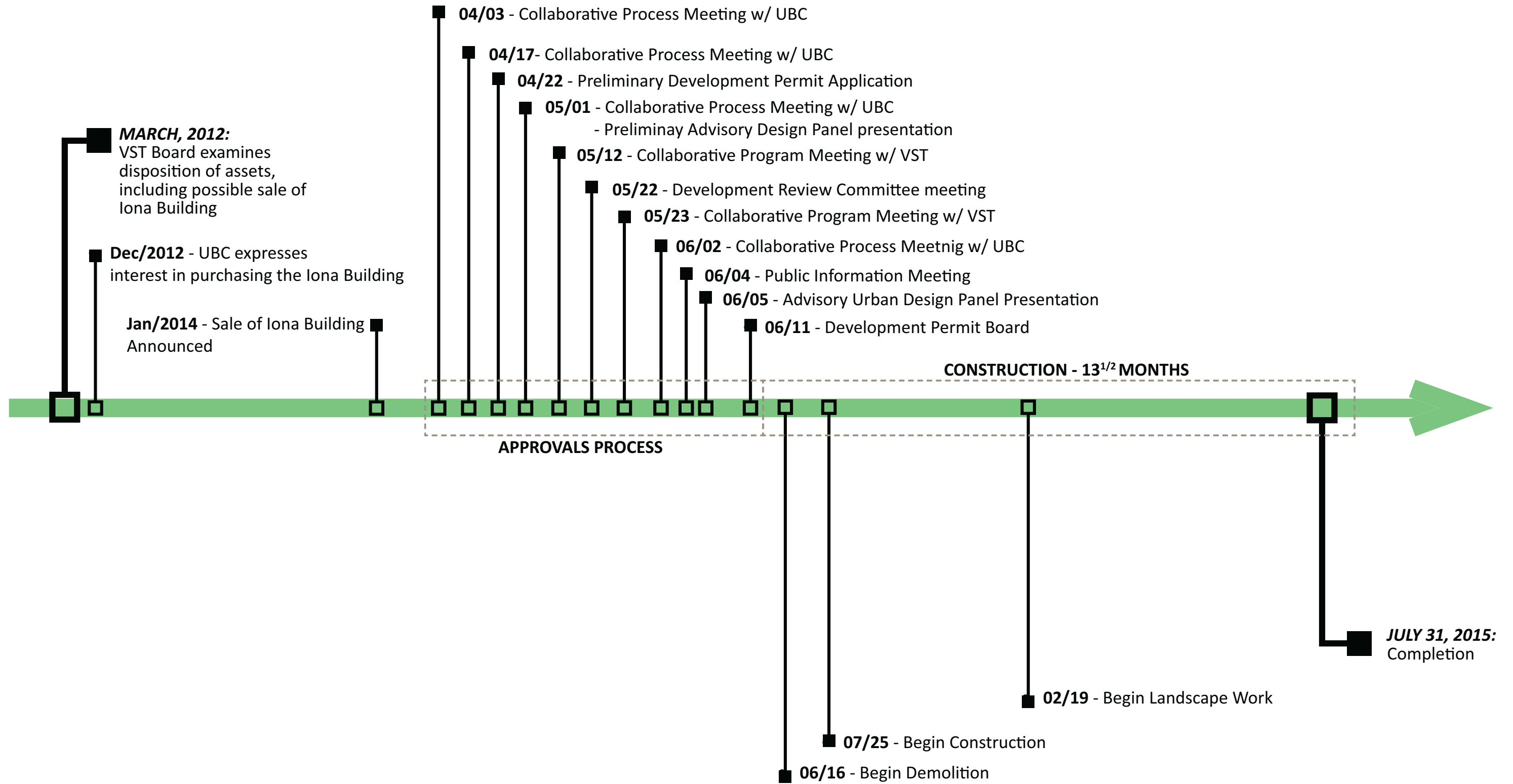
CONSTRUCTION HOURS
 MONDAY TO FRIDAY - 7:30 am TO 7:00 pm
 SATURDAY - 9:00 am TO 5:00 pm
 NO CONSTRUCTION ON SUNDAYS OR HOLIDAYS



TRAFFIC MANAGEMENT PLAN







PROJECT TIMELINE



TRANSPORTATION ACCESS



-  MAJOR BUS ROUTE
-  BUS STOP
-  BICYCLE PARKING
-  VEHICLE PARKING