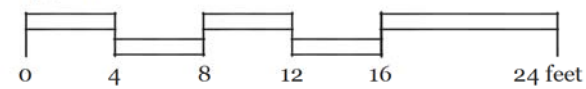


WEST ELEVATION



1/4" scale



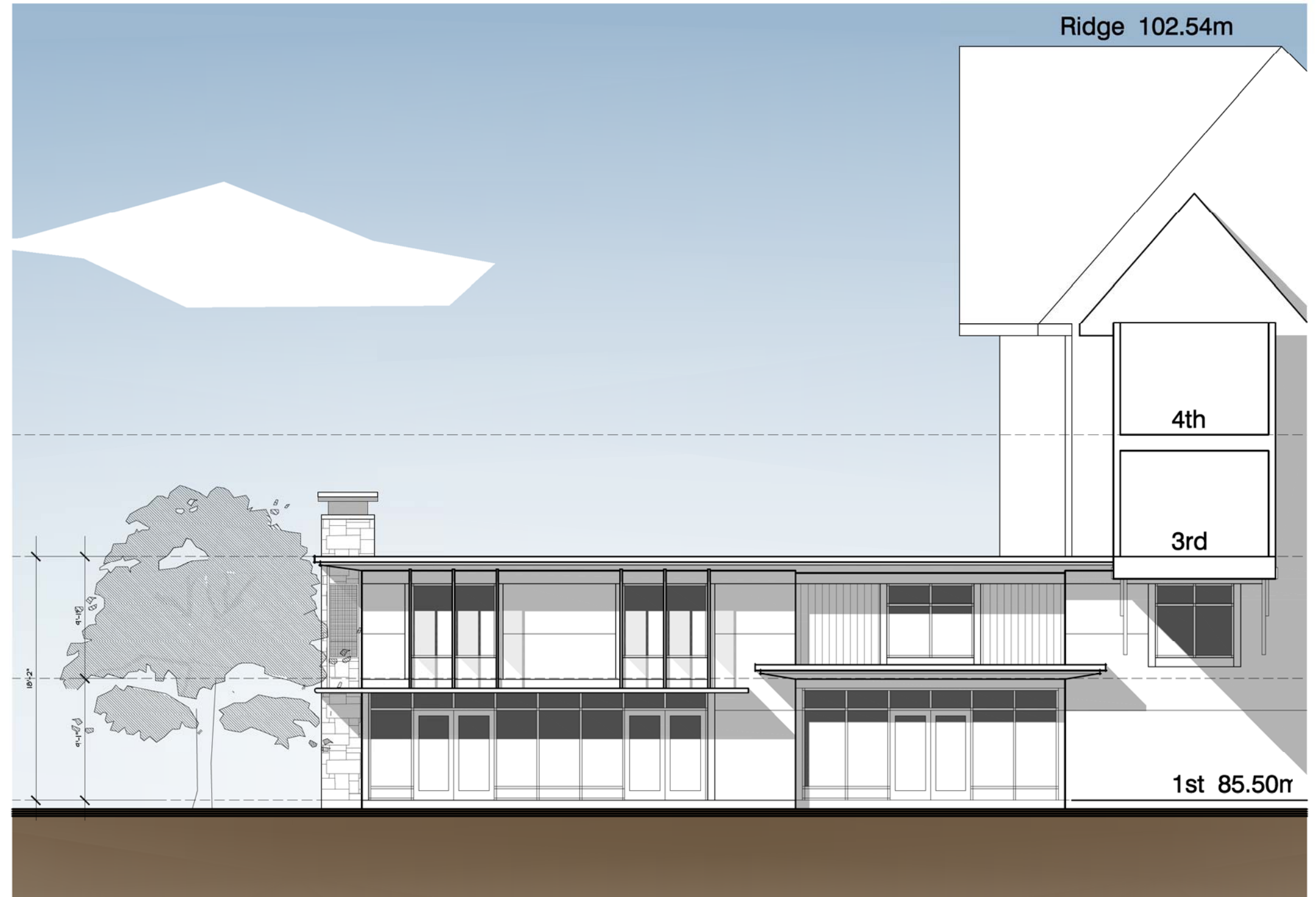
ST. ANDREW'S HALL EXPANSION

U B C

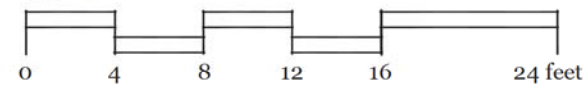
SEPTEMBER 27, 2011

SK-3.01

SOUTH ELEVATION

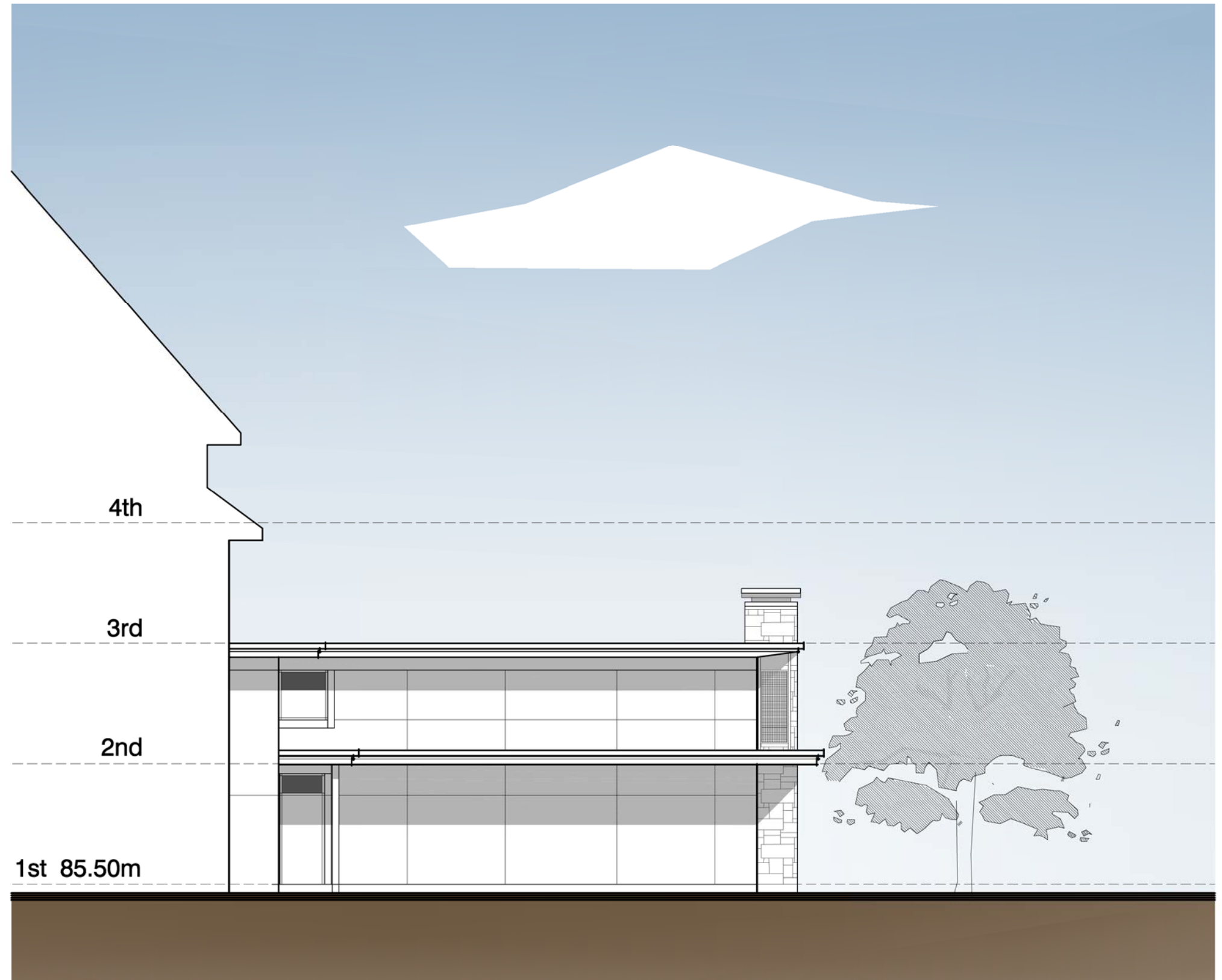


1/4" scale

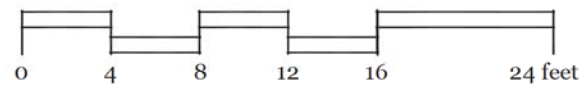


ST. ANDREW'S HALL EXPANSION

NORTH ELEVATION



1/4" scale



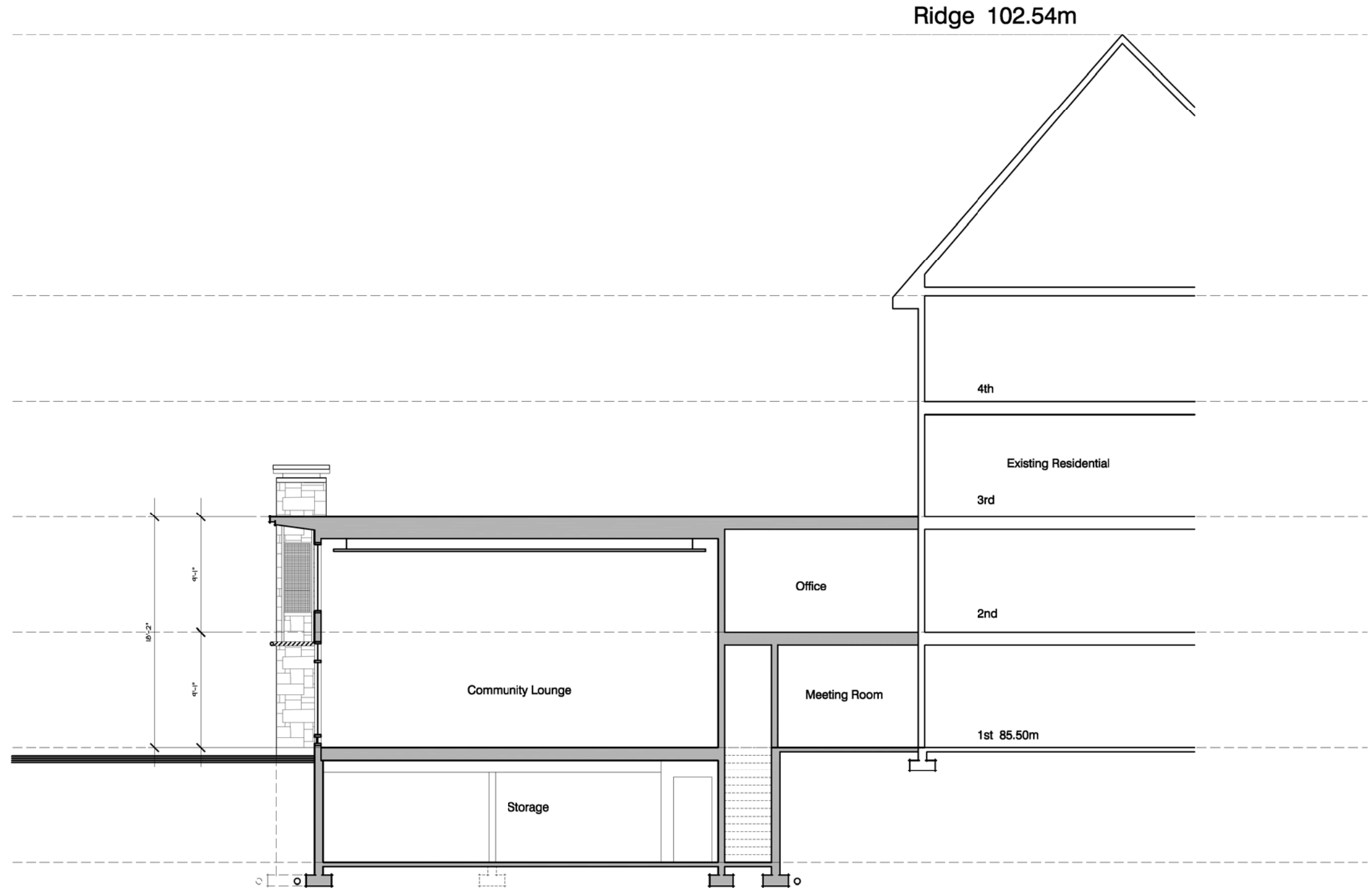
ST. ANDREW'S HALL EXPANSION

U B C

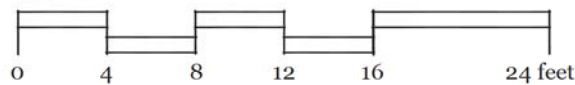
SEPTEMBER 27, 2011

SK-3.03

NORTH SOUTH SECTION

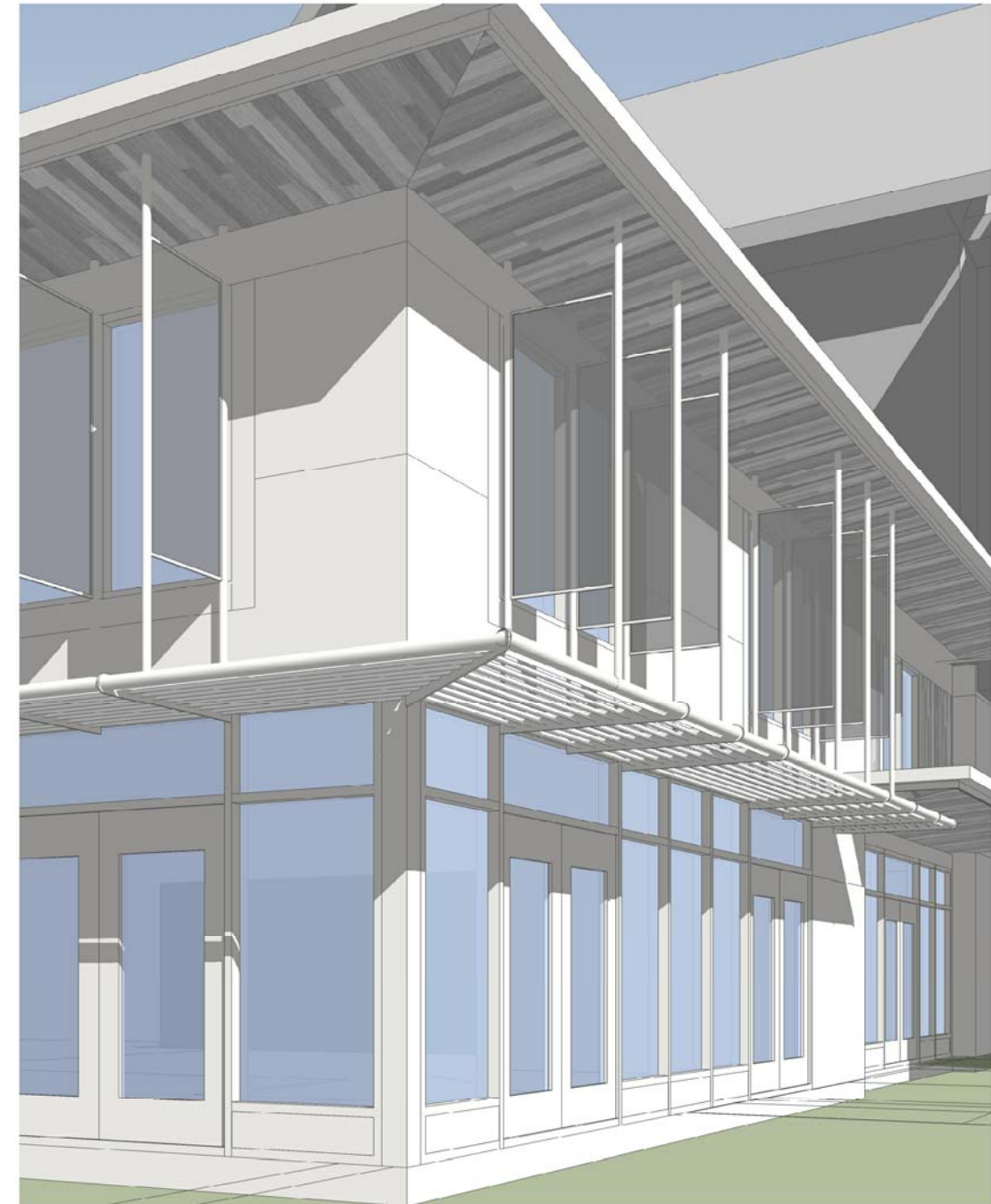


1/4" scale



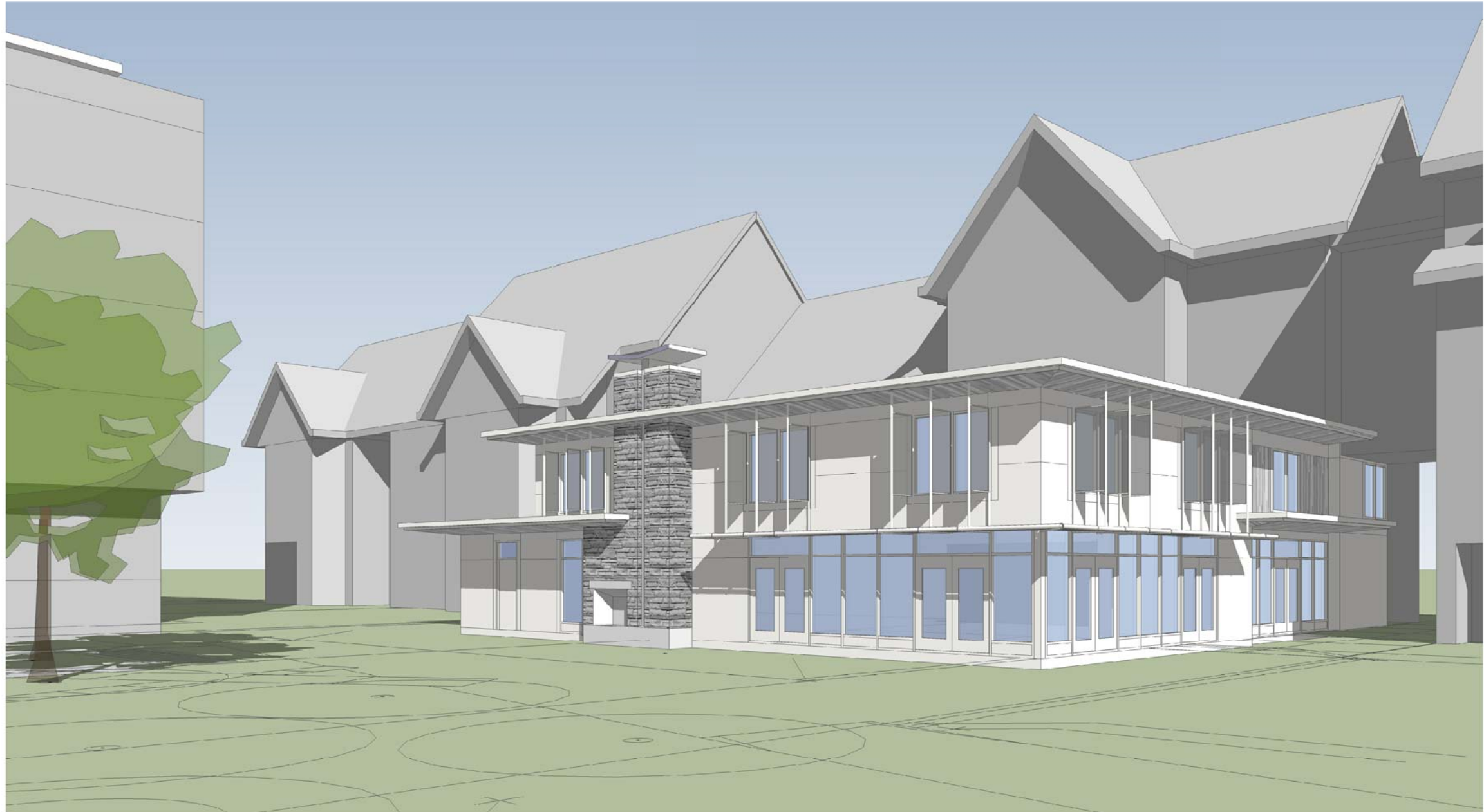
ST. ANDREW'S HALL EXPANSION

SOLAR SHADES



ST. ANDREW'S HALL EXPANSION

RENDERING



COLOUR AND MATERIAL



Colours & Materials



- Wood Siding:
Vertical T&G Wood Siding
Natural wood finish, Sikkens
- Chimney Cap:
Metal, Prefinished, Colour to match window frames
- Concrete Spine:
Sand Blasted Architectural Concrete
- Fascia:
Wood 2x6 on 2x10; Solid Stain
Benjamin Moore, Platinum Gray E-71
- Soffits:
Wood Soffits, 1x6 T&G, Channel Groove
Natural wood finish, Sikkens
- Vertical Solar Screen:
Aluminum Frame supporting tensioned metal mesh. Prefinished, Colour to match window frame.
- Windows:
Aluminum window frame
Double Glazing in clear glass w/ Low-E coating. Standard Silver Colour
- Horizontal Louver:
Custom Aluminum frames supporting 6" shading slats. Prefinished, Colour to match window frame
- Stucco:
Acrylic Stucco, Rainscreen
Colour to match existing residences
- Storefront Door:
Aluminum Frame Door
Powder Coated to match window frames
- Spandrel Panel:
Colour to match window frames
- Stone Veneer:
Granite, Same colour as Iona Building, Ashlar coursing pattern

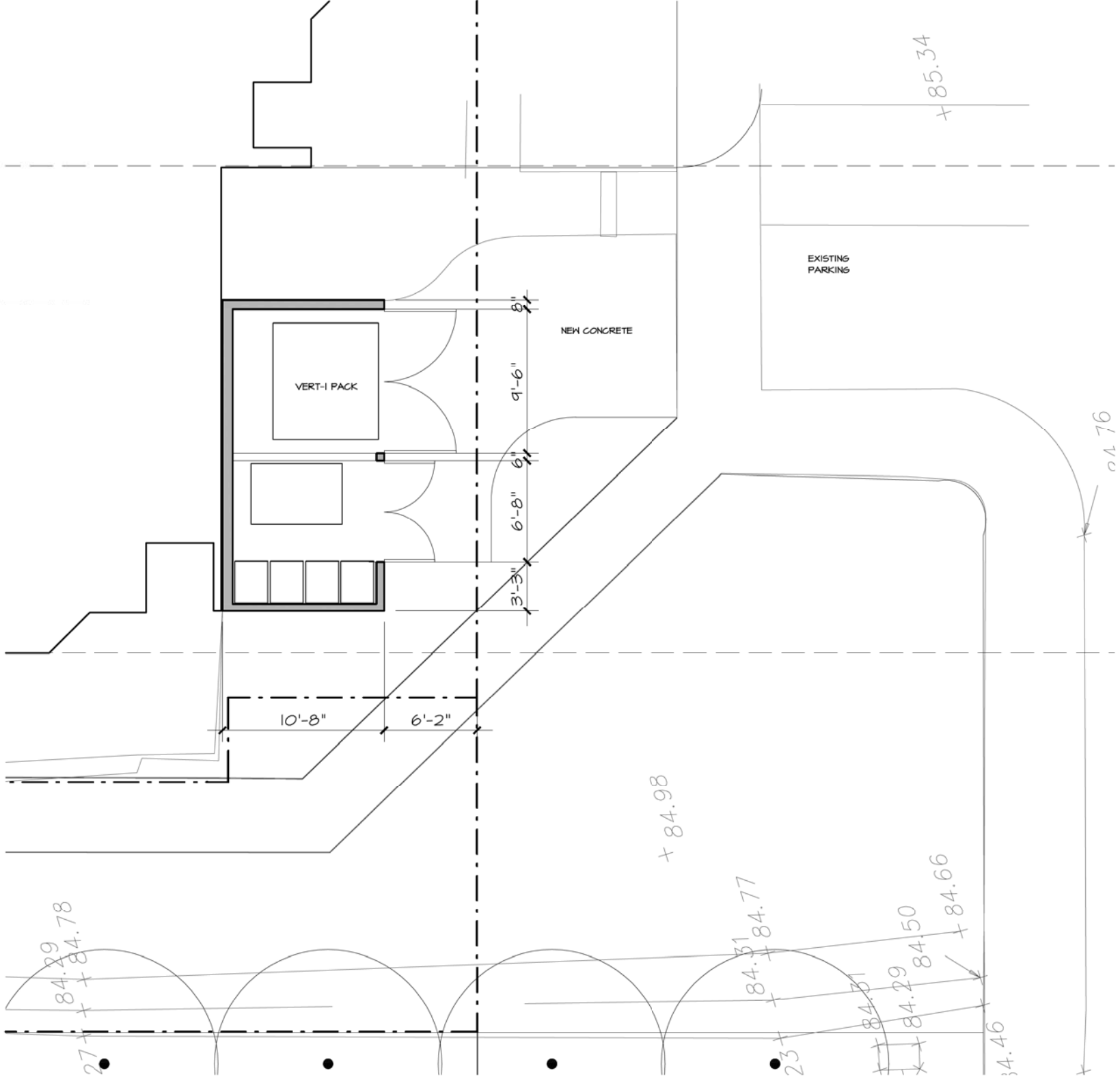
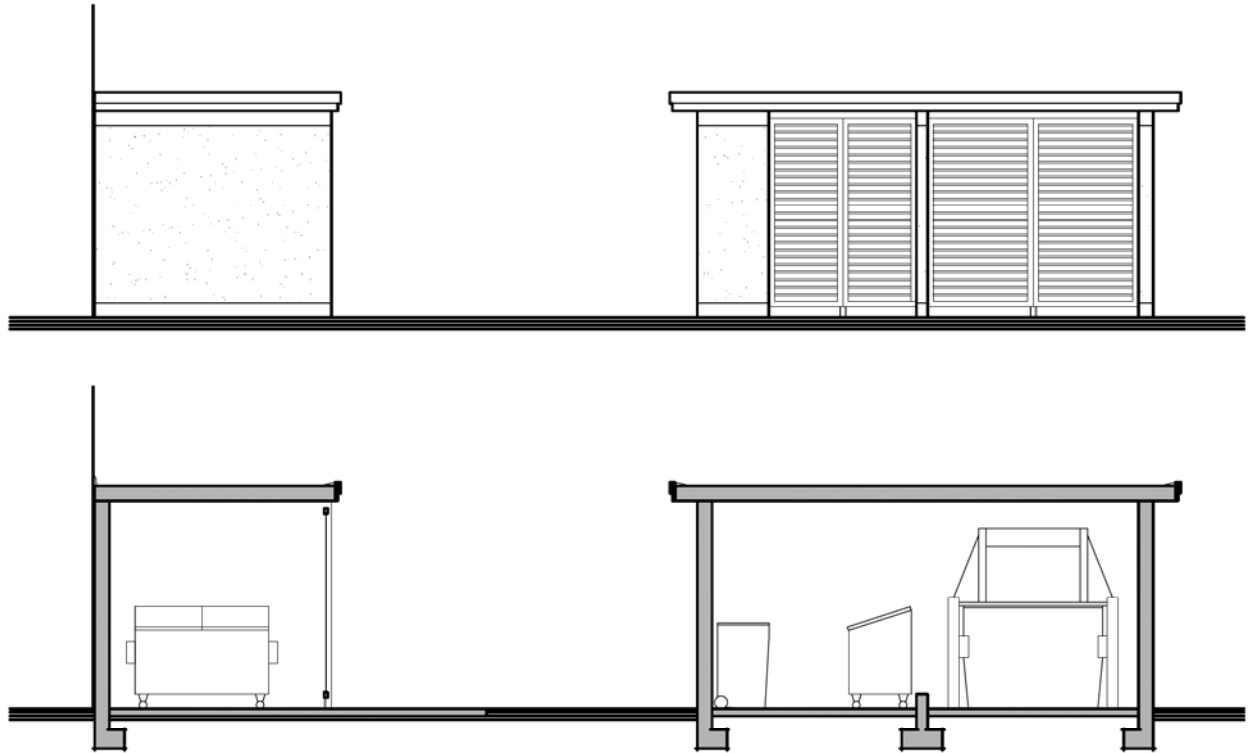
Sample Elevation Detail



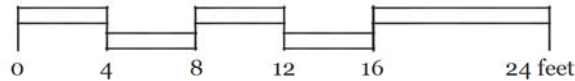
ST. ANDREW'S HALL EXPANSION

GARBAGE ENCLOSURE

FINAL COMPACTOR CONFIGURATION
TO BE CONFIRMED WITH GARBAGE
COLLECTION CONTRACTOR



1/4" scale

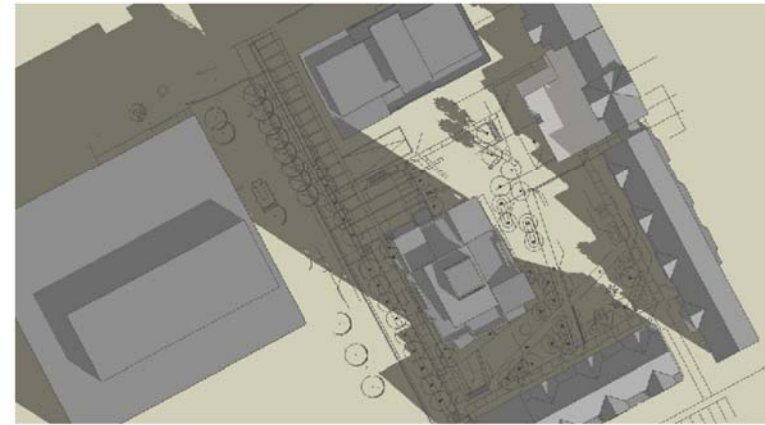


ST. ANDREW'S HALL EXPANSION

SHADOW DIAGRAM



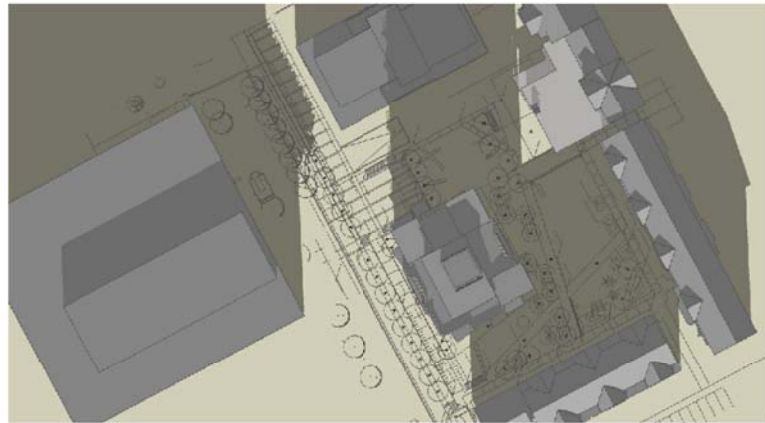
December 21, 9am



March 21, 9am



June 21, 9am



December 21, 12pm



March 21, 12pm



June 21, 12pm



December 21, 3pm



March 21, 3pm



June 21, 3pm



ST. ANDREW'S HALL EXPANSION