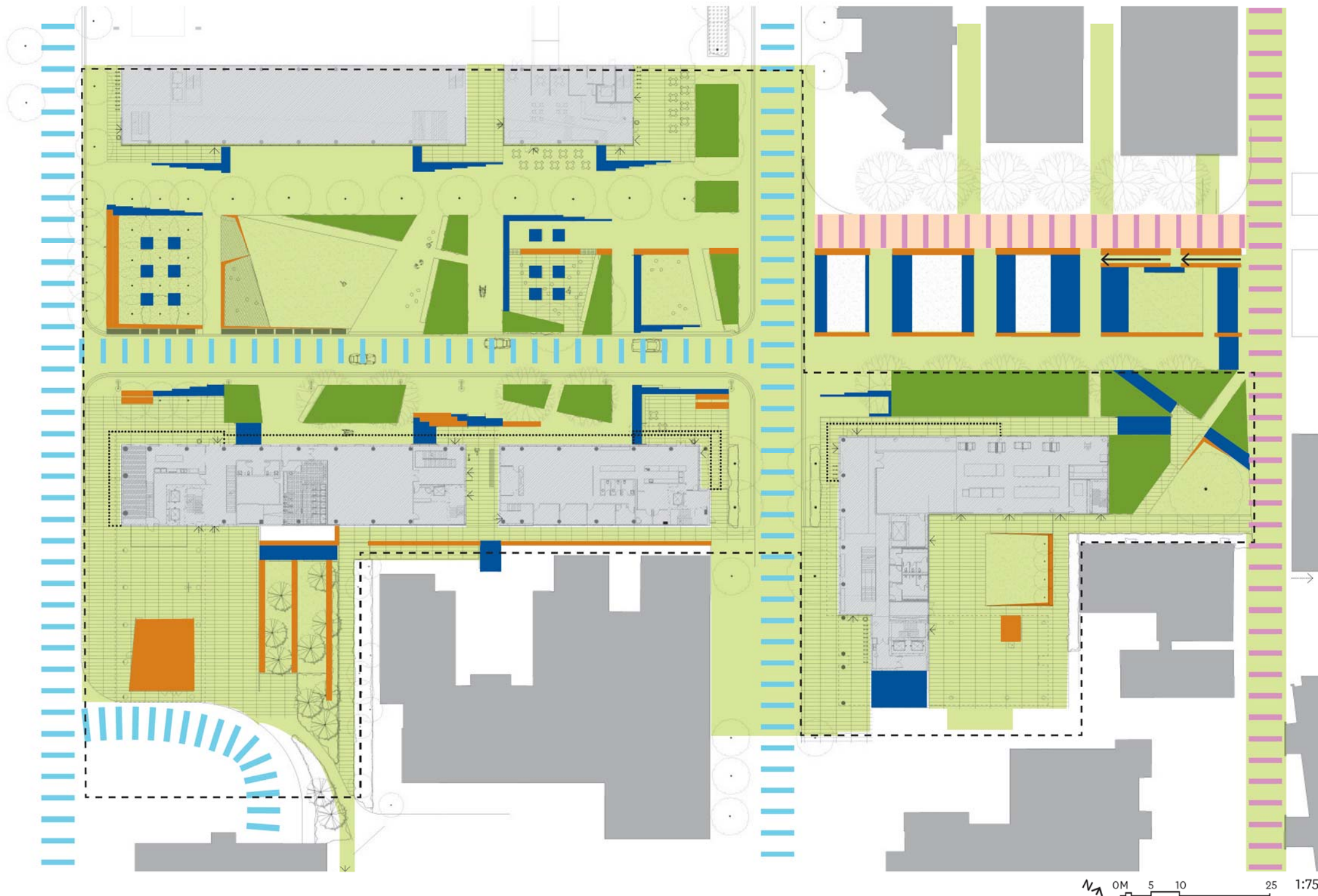


Landscape Plan



Circulation Plan



- Inclusive Pedestrian Circulation (Under 5.5% Slope)
- ←
 1 in 12 Ramp
- Steps
- Hardscape Barriers (Walls and Benches)
- Softscape Barriers (Plantings)
- Steep Slope (Over 5.5%)
- Vehicular Circulation
- Service Vehicular Circulation
- Weather Protection
- Entrance

Planting



American Elm



Lawn



Yew



Cherry Tree



Rhododendron



Grasses and Drought Tolerant Perennials in Masses

In accordance with the Vancouver Campus Plan Design Guidelines, all tree planting on the site will abide with the street tree planting recommendations for consistency and connectivity with the greater campus landscape. *Ulmus americana* or American elm, will be used on the to continue the tree planting scheme of University Boulevard and to respond to the high rise massing of the buildings of both Phase One and Two. A bosque of *Prunus yedoensis* 'Akebono' at the foot of University Boulevard will terminate the view from the east and act as a filigree of pink spring blossoms in front of the coniferous forest backdrop of Marine Drive. The bosque will also incorporate existing cherry tree planting on the edge of Phase Two and along Lower Mall. Two apple varieties will be incorporated into the Room, to provide a presence for the UBC Apple Farm, to act as a symbolic planting associated with teaching, and to expand the collection of unique tree species as part of the Arboretum Walk, loosely associated with West Mall.

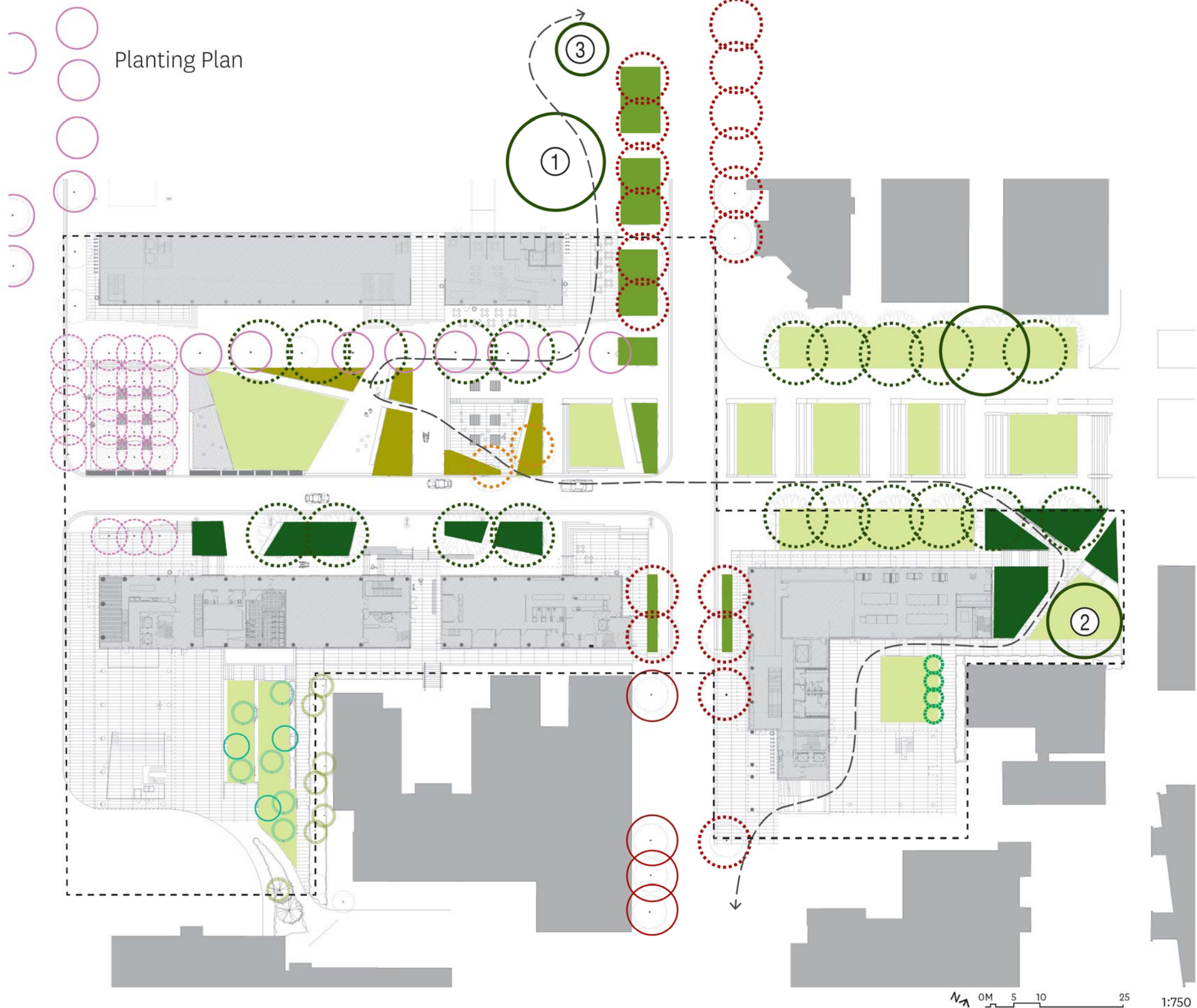
All understory planting will incorporate *Taxus* and *Rhododendron* varieties in accordance with the Campus Plan Design Guidelines, as well as a mix of drought-tolerant evergreen and perennial plantings that will minimize irrigation requirements and water consumption in accordance with LEED requirements.

PLANT SCHEDULE

KEY	QTY	BOTANICAL NAME	COMMON NAME	PLANTED SIZE	COMMENTS
Ar	5	<i>Acer rubrum</i> 'Red Sunset'	Red Maple	8.0cm Cal., B&B	Uniform Size And Quality, Single Leader
Bj	21	<i>Betula jacquesmontii</i>	Himalayan Birch	8.0cm Cal., B&B	Uniform Size And Quality, Single Leader
Cb	83	<i>Carpinus betulus</i> 'Fastigiata'	Fastigate Beech	8.0cm Cal., B&B	Uniform Size And Quality, Single Leader
Mg	36	<i>Malus x domestica</i> 'Gravenstein'	Gravenstein Apple	3.0m Ht., B&B	Full, Single Leader
Mf	15	<i>Malus x domestica</i> 'Fuji'	Fuji Apple	6.0cm Cal., B&B	Full, Single Leader
Pc	6	<i>Pinus contorta</i> var. <i>contorta</i>	Shore Pine	3.0m Ht., B&B	Multistemmed, Asymmetrical Sculpted Form
Py	24	<i>Prunus yedoensis</i> 'Akebono'	Daybreak Cherry	8.0cm Cal., B&B	Uniform Size and Quality, Single Leader
Pm	12	<i>Pseudotsuga menziesii</i>	Douglas Fir	3.5m Ht., B&B	Uniform Size And Quality, Single Leader,
Ua	23	<i>Ulmus americana</i> 'Princeton'	Princeton American Elm	12.0cm Cal., W.B.	Uniform Size And Quality, Single Leader
Aj1	350	<i>Azalea japonica</i> 'Hino White'	Japanese Azalea	#2 Pot, 24" O.C.	Full
Aj2	350	<i>Azalea japonica</i> 'Hino Crimson'	Japanese Azalea	#2 Pot, 24" O.C.	Full
Bg	1200	<i>Buxus x 'Green Mountain'</i>	Green Mountain Boxwood	#3 Pot, 18" O.C.	Full, Sheared
Gs	1200	<i>Gaultheria shallon</i>	Salal	#1 Pot, 18" O.C.	Full
Hq	50	<i>Hydrangea quercifolia</i>	Oakleaf Hydrangea	#3 Pot, 36" O.C.	Full
Pm	50	<i>Polystichum munitum</i>	Western Sword Fern	#1 Pot, 18" O.C.	Full
Rh1	75	<i>Rhododendron</i> 'Cream Crest'	White Rhododendron species	#3 Pot, 36" O.C.	Full
Rh2	150	<i>Rhododendron</i> 'Ramapo'	Purple Rhododendron species	#3 Pot, 36" O.C.	Full
Rr	420	<i>Rosa</i> 'White Meidiland'	White Rose	#2 Pot, 24" O.C.	Full
Sr	600	<i>Skimmia rubella</i>	Rubella Skimmia	#2 Pot, 24" O.C.	Full
Tb	200	<i>Taxus baccata</i> 'Repandens'	Spreading English Yew	#3 Pot, 36" O.C.	Full
Tm	150	<i>Taxus x media</i> 'Hicksii'	Hick's Yew	4' Ht., 36" O.C.	Full, Sheared
Ag	25	<i>Agastache</i> 'Black Adder'	Hyssop	#1 Pot, 18" O.C.	Full
Ms	80	<i>Miscanthus sinensis</i> 'Yaku Jima'	Zebra Grass	#1 Pot, 18" O.C.	Full
Pa	120	<i>Pennisetum alopecuroides</i>	Fountain Grass	#1 Pot, 18" O.C.	Full
Ru	100	<i>Rudbeckia fulgida</i> 'Goldstrum'	Goldstrum Coneflower	#1 Pot, 12" O.C.	Full
Sm	150	<i>Sedum</i> 'Matrona'	Stonecrop	#1 Pot, 12" O.C.	Full
Ct	6	<i>Clematis terniflora</i>	Sweet Fall Clematis	#1 Pot, Staked	Full, Staked
Lj	2	<i>Lonicera japonica</i>	Japanese Honeysuckle	#1 Pot, Staked	Full, Staked
Pt	1200	<i>Pachysandra terminalis</i>	Japanese Spurge	#1 Pot, 12" O.C.	Full
Vm	400	<i>Vinca minor</i> 'Alba'	Periwinkle	#1 Pot, 18" O.C.	Full

NOTES

1. All streetscape design is to be coordinated with UBC Campus and Community Planning. This plan shows landscape proposed as part of streetscape development.
2. All plant material to BCNTA and BCSLA standards. Refer to the BCSLA Landscape Standard, latest edition.
3. Area of search for plant material: Pacific Northwest, including British Columbia, Washington and Oregon.
4. Refer to specification for general conditions, materials and installation requirements.

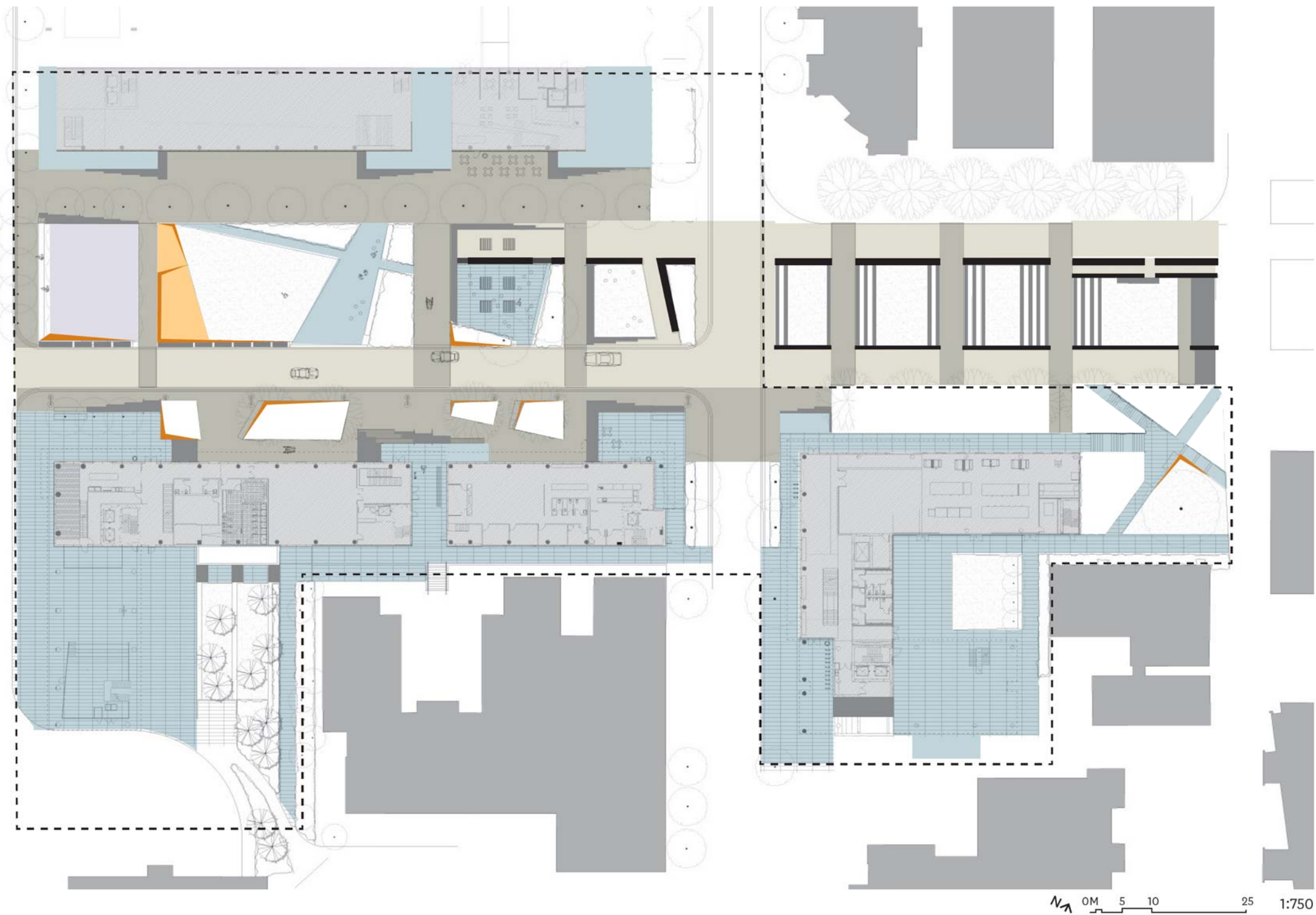


Planting Plan

- Lawns
 - West Mall Low Shrub Planting
 - Evergreen Shrub Planting
 - Ornamental Grasses and Perennials
 - American Elm Tree
 - Cherry Tree
 - Apple Tree
 - Maple Tree
 - Spruce Tree
 - Fastigate Hornbeam
 - Birch
 - ① Ponderosa Pine
 - ② Cappadocian Maple
 - ③ Digger Pine
- Proposed Tree
 - Existing Tree

N
0M 5 10 25
1:750

Paving Plan



- University Boulevard Standard Paving Pattern
- UBlvd Standard Color Mix Variation
- Saw Cut Concrete Paving
- Crushed Granite Fines
- Concrete Steps
- Wooden Deck
- Concrete Walls
- Corten Steel Walls

Furnishings Plan

