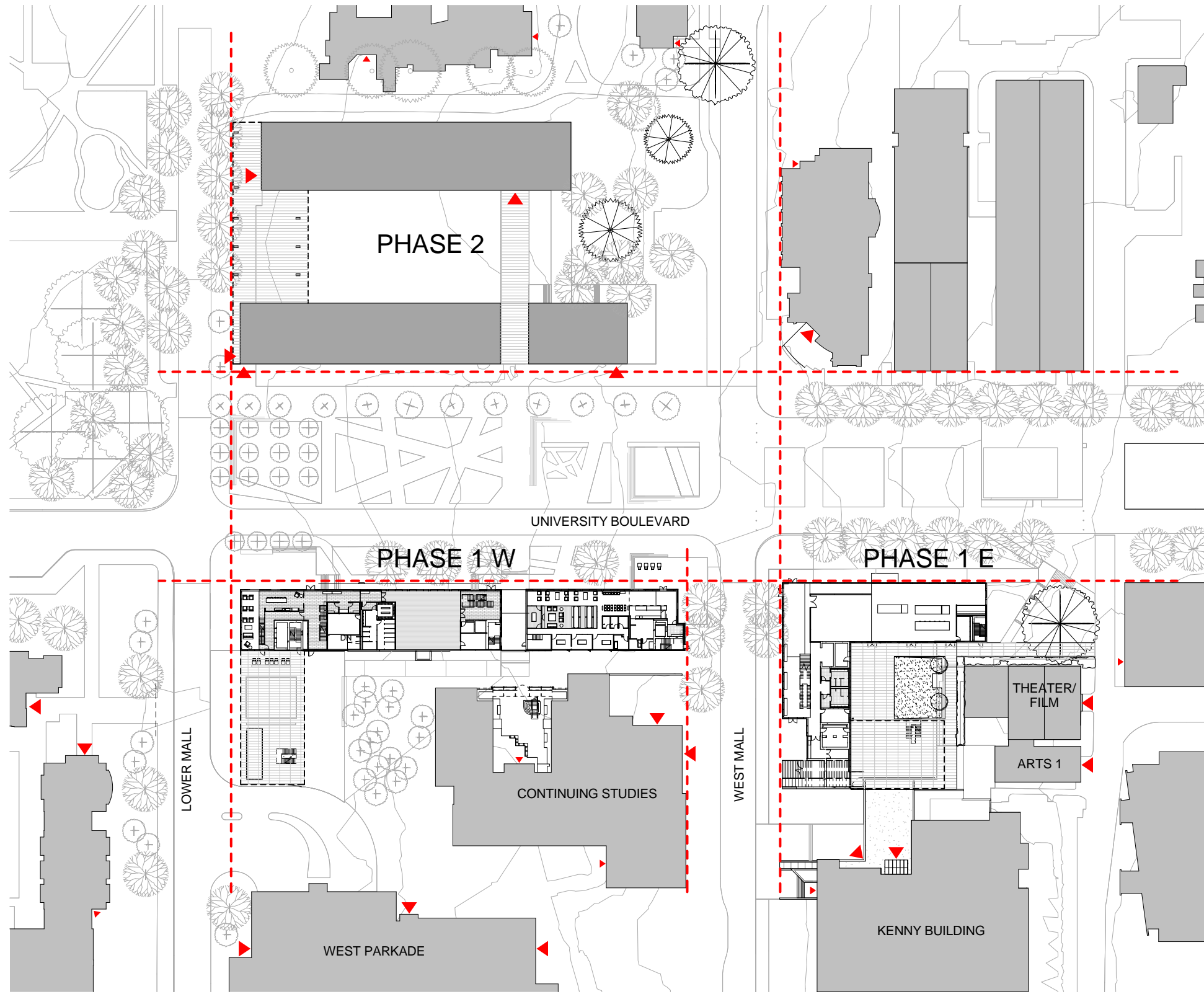


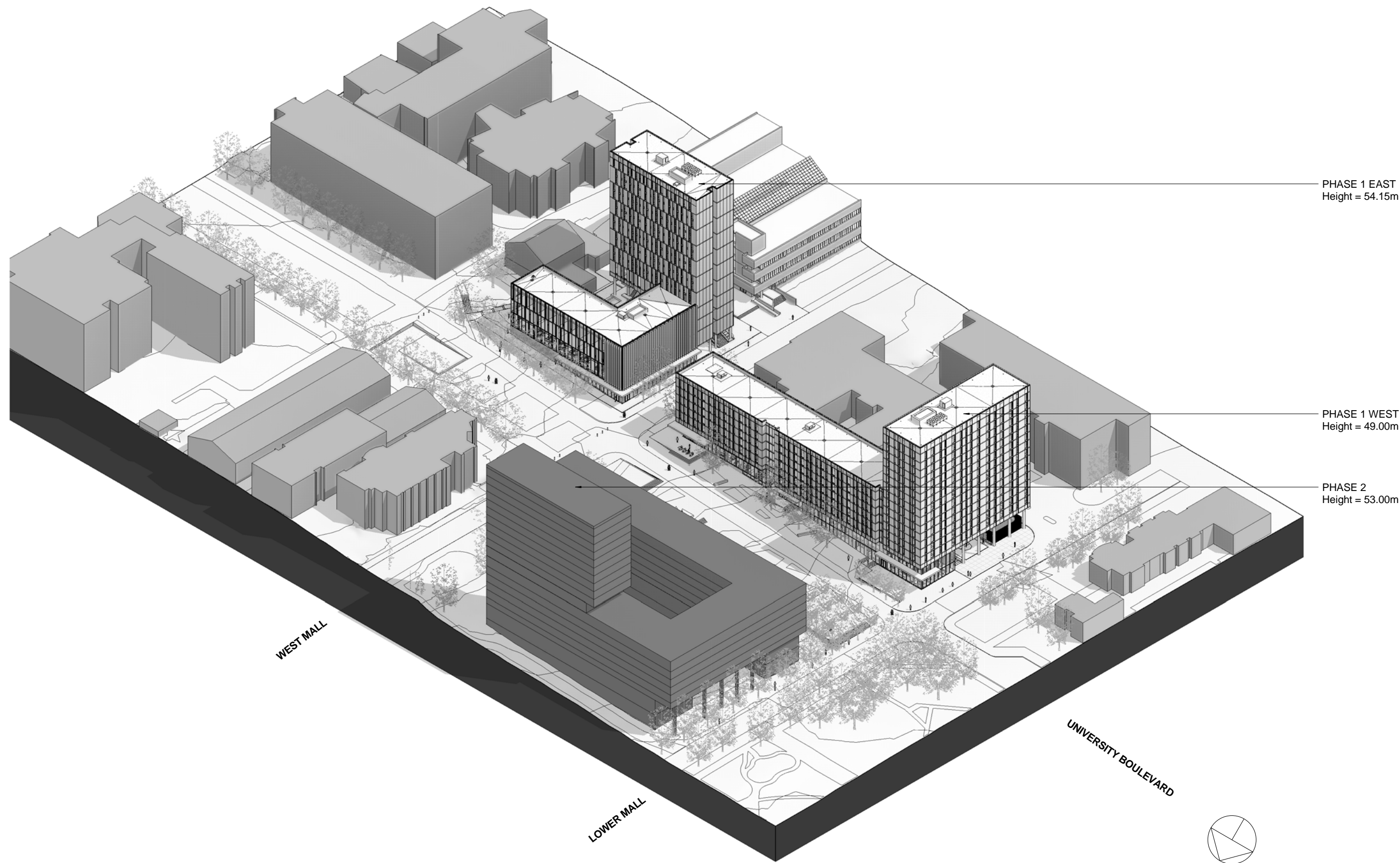
UBC PONDEROSA COMMONS | AUDP Submission

Kuwabara Payne McKenna Blumberg Architects
322 King St West, 3rd Floor, Toronto, M5V 1J2

Hughes Condon Marler Architects
1508 West 2nd Avenue, Suite 300, Vancouver, V6J 1H2

September 7, 2011





PHASE 1 EAST
Height = 54.15m

PHASE 1 WEST
Height = 49.00m

PHASE 2
Height = 53.00m

WEST MALL

LOWER MALL

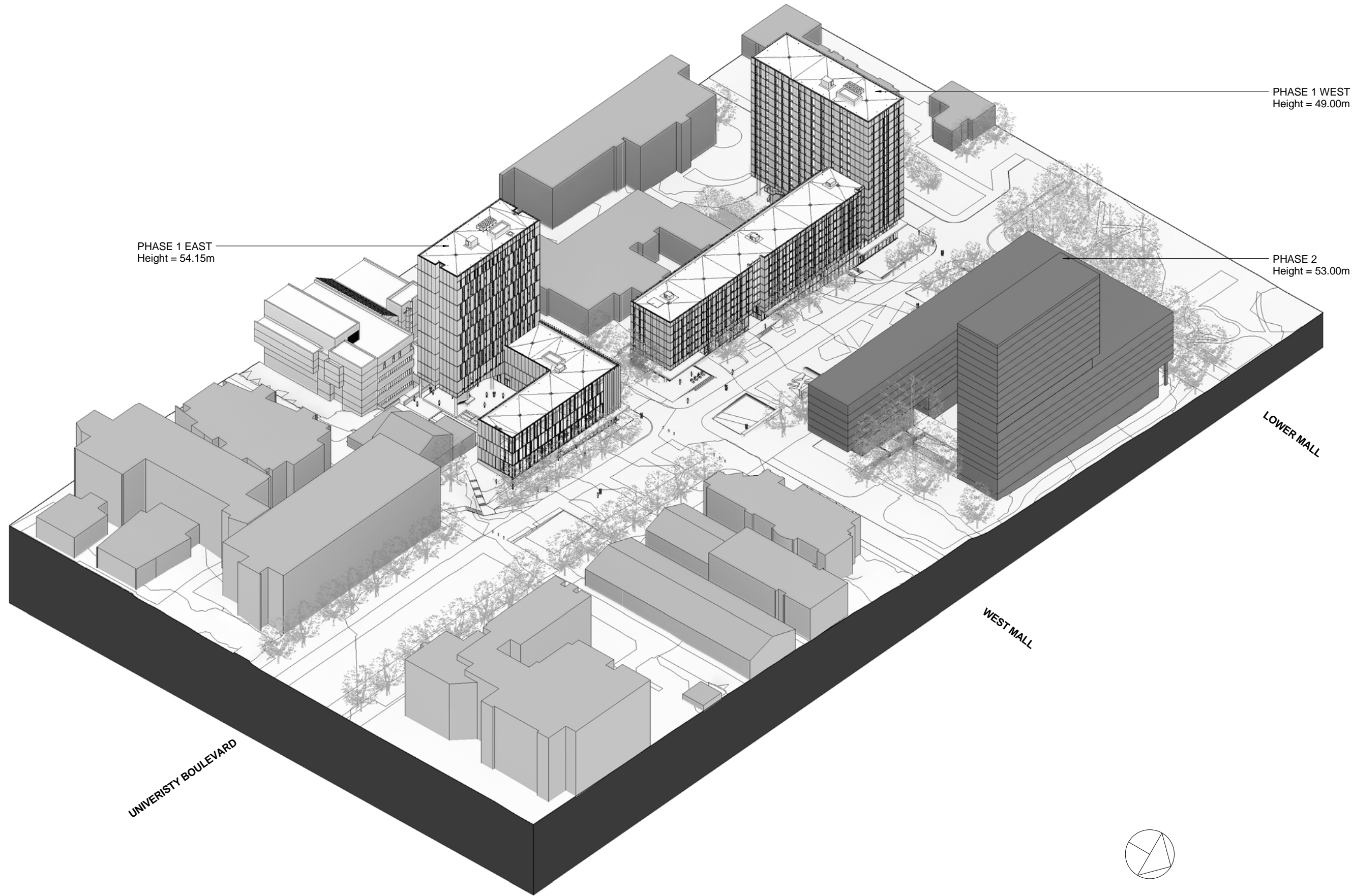
UNIVERSITY BOULEVARD

AXONOMETRIC - NORTH WEST VIEW

UBC PONDEROSA COMMONS
September 7, 2011

KUWABARA PAYNE MCKENNA BLUMBERG | HUGHES CONDON MARLER ARCHITECTS

ARCHITECTS IN JOINT VENTURE



AXONOMETRIC - NORTH EAST VIEW

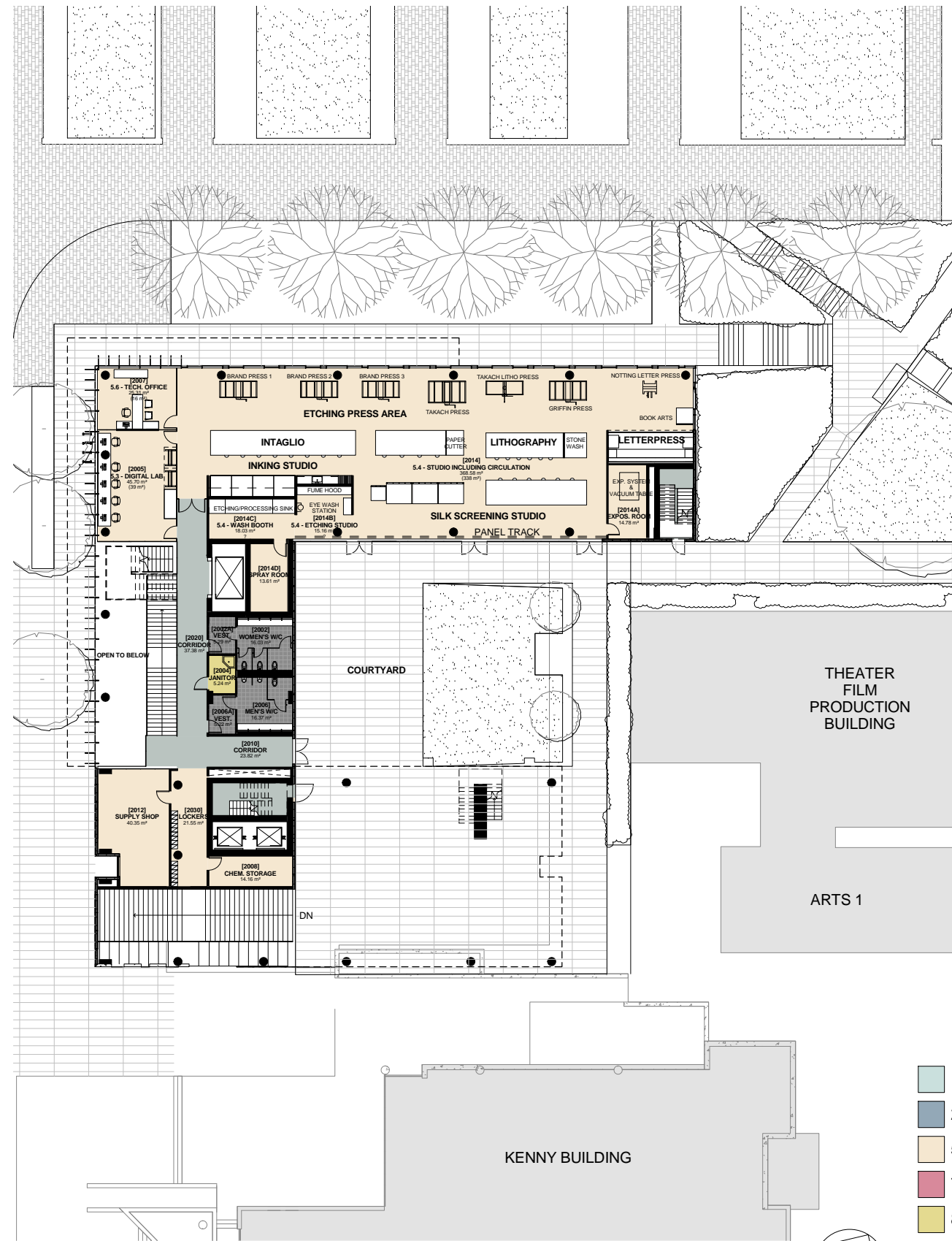
UBC PONDEROSA COMMONS
September 7, 2011

KUWABARA PAYNE MCKENNA BLUMBERG | HUGHES CONDON MARLER ARCHITECTS

ARCHITECTS IN JOINT VENTURE



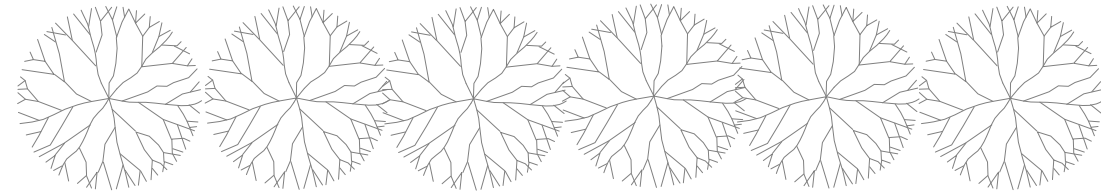
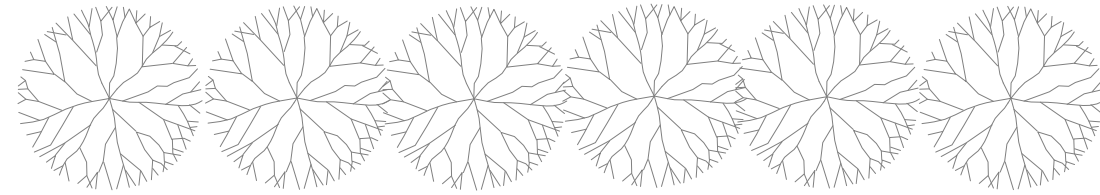
LEVEL 1



LEVEL 2

- 1.0 Public Domain
- 2.0 Student Housing
- 5.0 AHVA/ BFA/ MFA Studio
- 7.0 Psychology
- 8.0 Building Support
- 9.0 Corridors
- 10.0 Service Spaces

PHASE 1 EAST - LEVEL 1 & 2 PLANS



LEVEL 3



LEVEL 4

- 1.0 Public Domain
- 2.0 Student Housing
- 5.0 AHVA/ BFA/ MFA Studio
- 7.0 Psychology
- 8.0 Building Support
- 9.0 Corridors
- 10.0 Service Spaces

PHASE 1 EAST - LEVEL 3 & 4 PLANS



PHASE 1 EAST - NORTH EAST CORNER

UBC PONDEROSA COMMONS
September 7, 2011

KUWABARA PAYNE MCKENNA BLUMBERG | HUGHES CONDON MARLER ARCHITECTS

ARCHITECTS IN JOINT VENTURE



PHASE 1 EAST - NORTH WEST CORNER

UBC PONDEROSA COMMONS
September 7, 2011

KUWABARA PAYNE MCKENNA BLUMBERG | HUGHES CONDON MARLER ARCHITECTS

ARCHITECTS IN JOINT VENTURE



PHASE 1 EAST - SOUTH WEST CORNER

UBC PONDEROSA COMMONS
September 7, 2011

KUWABARA PAYNE MCKENNA BLUMBERG | HUGHES CONDON MARLER ARCHITECTS

ARCHITECTS IN JOINT VENTURE



PHASE 1 EAST - KENNY ENTRANCE

UBC PONDEROSA COMMONS
September 7, 2011

KUWABARA PAYNE MCKENNA BLUMBERG | HUGHES CONDON MARLER ARCHITECTS

ARCHITECTS IN JOINT VENTURE



PHASE 1 EAST - UNDERPASS & KENNY ENTRY

UBC PONDEROSA COMMONS
September 7, 2011

KUWABARA PAYNE MCKENNA BLUMBERG | HUGHES CONDON MARLER ARCHITECTS

ARCHITECTS IN JOINT VENTURE

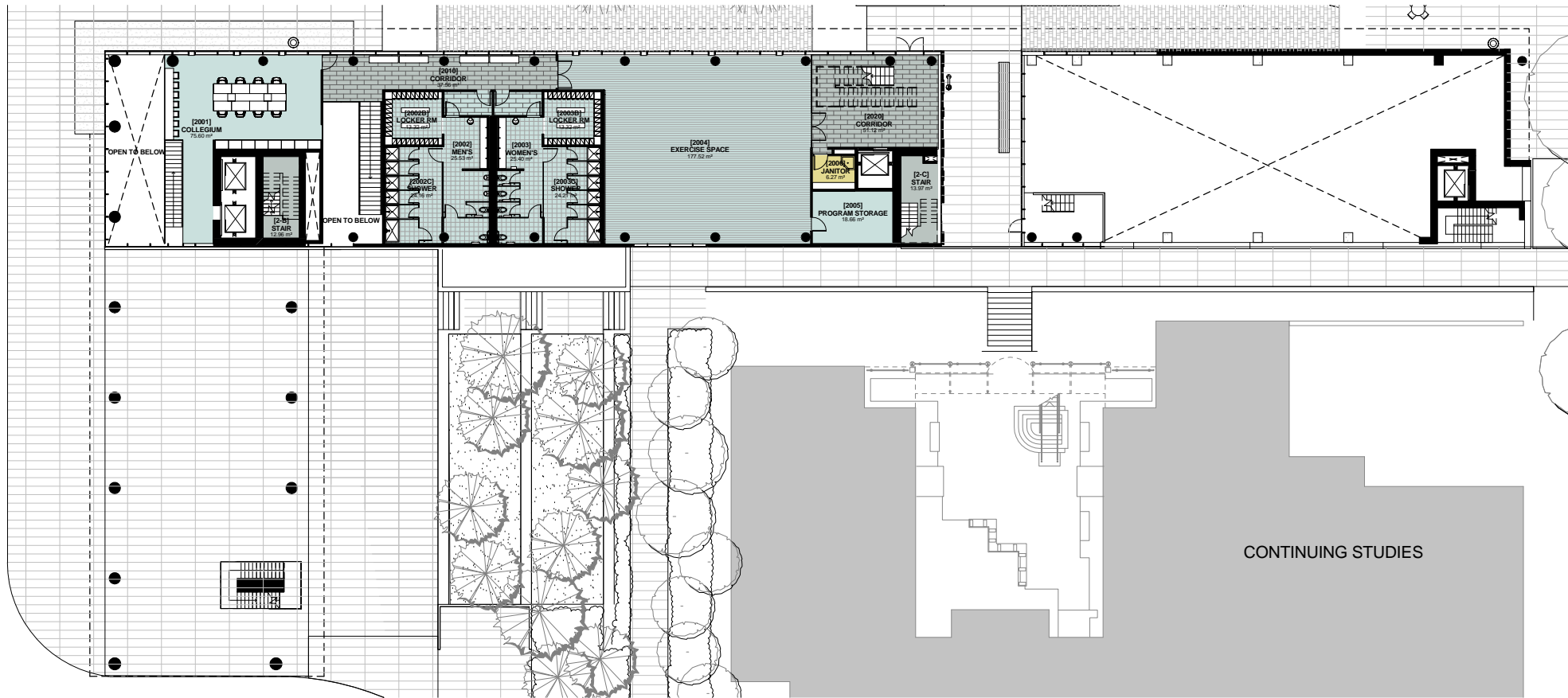


PHASE 1 EAST - COUTYARD LOOKING TOWARD KENNY

UBC PONDEROSA COMMONS
September 7, 2011

KUWABARA PAYNE MCKENNA BLUMBERG | HUGHES CONDON MARLER ARCHITECTS

ARCHITECTS IN JOINT VENTURE

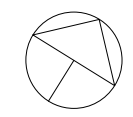


LEVEL 2 PLAN



LEVEL 2A & 3

- 1.0 Public Domain
- 2.0 Student Housing
- 8.0 Building Support
- 9.0 Corridors
- 10.0 Service Spaces



PHASE 1 WEST - LEVEL 2, 2A & 3 PLAN

UBC PONDEROSA COMMONS
September 7, 2011

KUWABARA PAYNE MCKENNA BLUMBERG | HUGHES CONDON MARLER ARCHITECTS

ARCHITECTS IN JOINT VENTURE



PHASE 1 WEST - NORTH EAST CORNER

UBC PONDEROSA COMMONS
September 7, 2011

KUWABARA PAYNE MCKENNA BLUMBERG | HUGHES CONDON MARLER ARCHITECTS

ARCHITECTS IN JOINT VENTURE

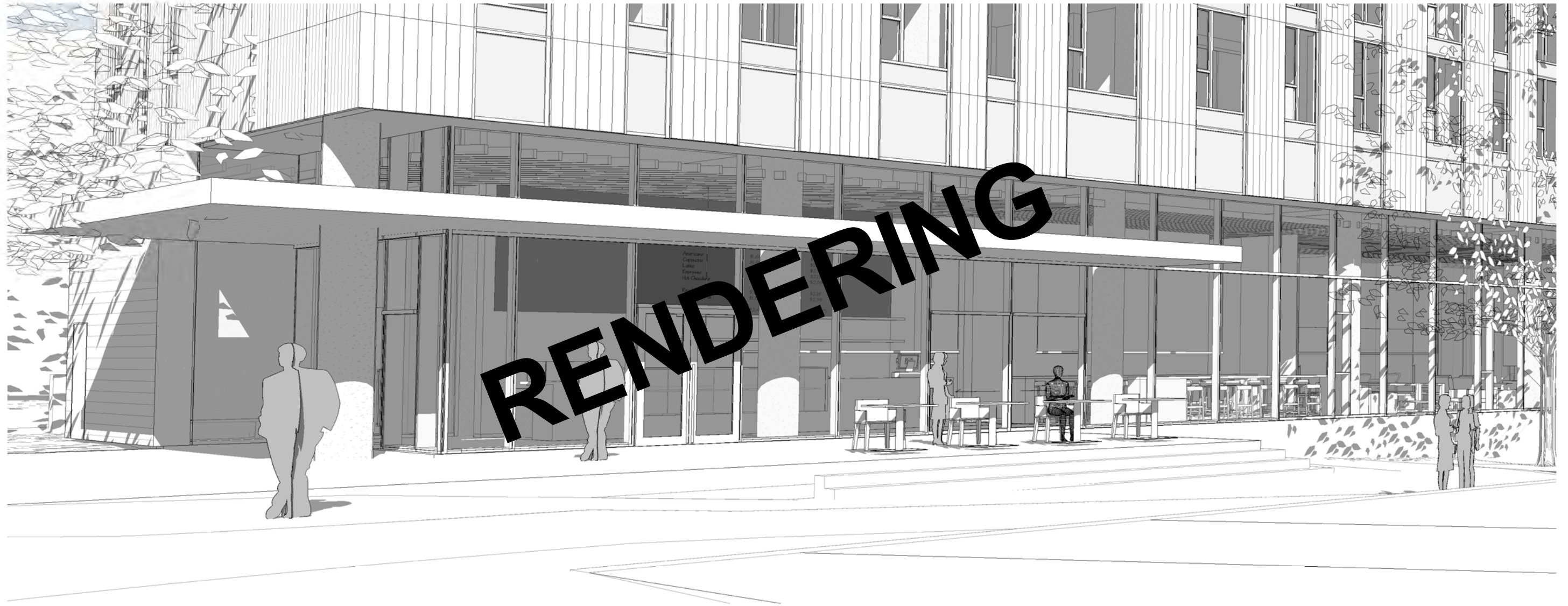


PHASE 1 WEST - NORTH WEST CORNER

UBC PONDEROSA COMMONS
September 7, 2011

KUWABARA PAYNE MCKENNA BLUMBERG | HUGHES CONDON MARLER ARCHITECTS

ARCHITECTS IN JOINT VENTURE

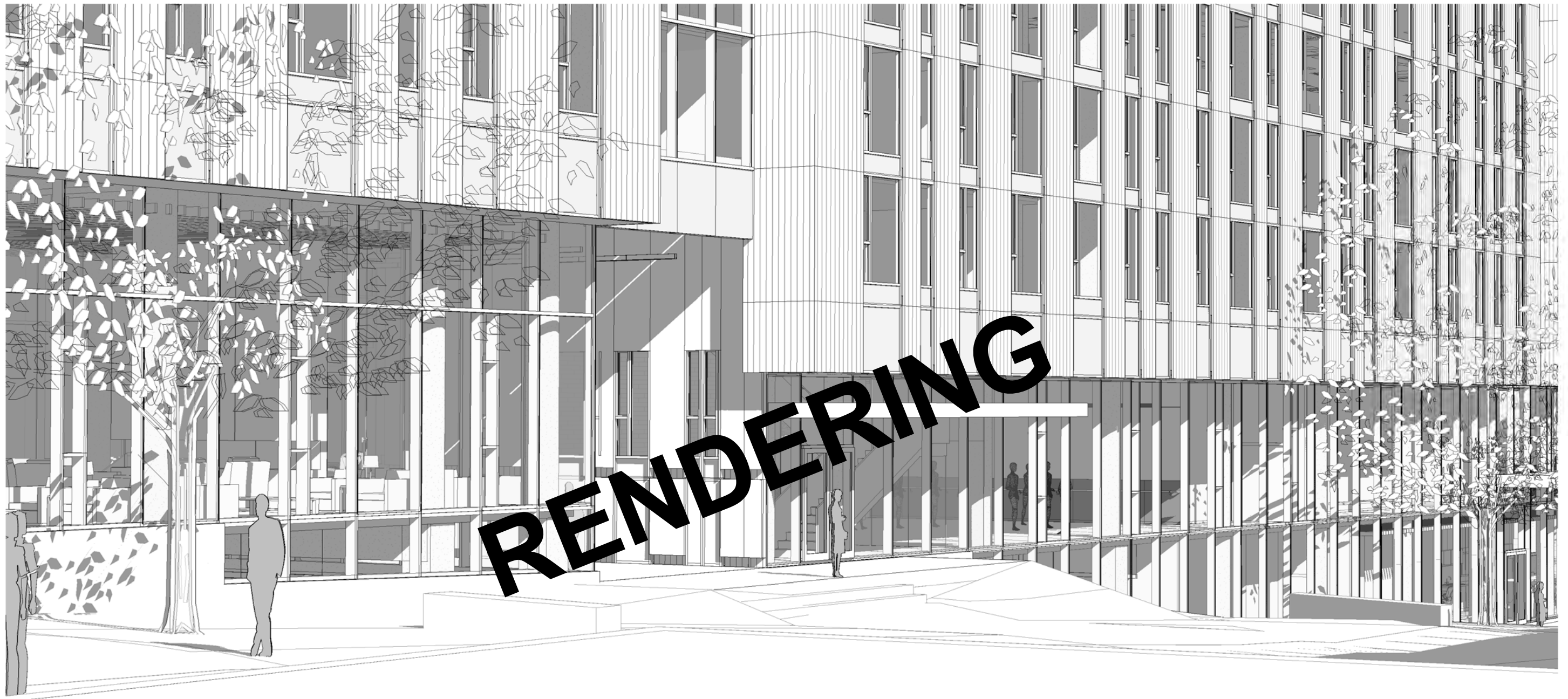


PHASE 1 WEST - STREET VIEW - CAFE ENTRANCE

UBC PONDEROSA COMMONS
September 7, 2011

KUWABARA PAYNE MCKENNA BLUMBERG | HUGHES CONDON MARLER ARCHITECTS

ARCHITECTS IN JOINT VENTURE

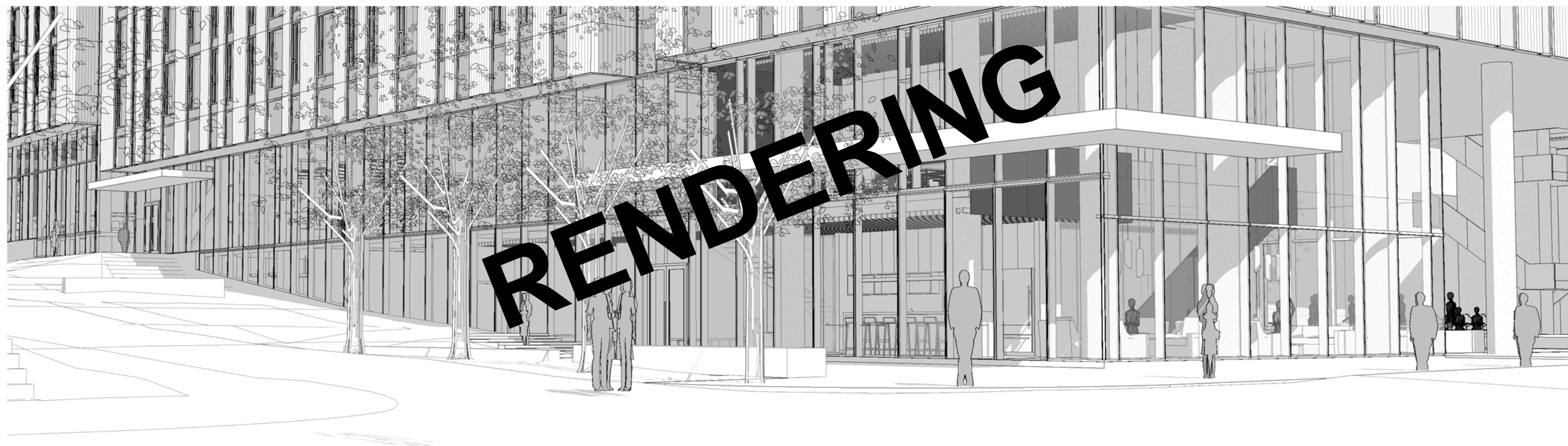


PHASE 1 WEST - STREET VIEW - MIDDLE PATHWAY

UBC PONDEROSA COMMONS
September 7, 2011

KUWABARA PAYNE MCKENNA BLUMBERG | HUGHES CONDON MARLER ARCHITECTS

ARCHITECTS IN JOINT VENTURE



PHASE 1 WEST - NORTH WEST CORNER (COLLEGIUM)

UBC PONDEROSA COMMONS
September 7, 2011

KUWABARA PAYNE MCKENNA BLUMBERG | HUGHES CONDON MARLER ARCHITECTS

ARCHITECTS IN JOINT VENTURE



PHASE 1 WEST - UNDERPASS & BIKE STORAGE

UBC PONDEROSA COMMONS
September 7, 2011

KUWABARA PAYNE MCKENNA BLUMBERG | HUGHES CONDON MARLER ARCHITECTS

ARCHITECTS IN JOINT VENTURE

UBC PONDEROSA COMMONS | Canopy Study

Kuwabara Payne McKenna Blumberg Architects
322 King St West, 3rd Floor, Toronto, M5V 1J2

Hughes Condon Marler Architects
1508 West 2nd Avenue, Suite 300, Vancouver, V6J 1H2

September 7, 2011



NORTH ELEVATION - CANOPY OPTION A

UBC PONDEROSA COMMONS
September 7, 2011

KUWABARA PAYNE MCKENNA BLUMBERG | HUGHES CONDON MARLER ARCHITECTS

ARCHITECTS IN JOINT VENTURE



NORTH ELEVATION - CANOPY OPTION B

UBC PONDEROSA COMMONS
September 7, 2011

KUWABARA PAYNE MCKENNA BLUMBERG | HUGHES CONDON MARLER ARCHITECTS

ARCHITECTS IN JOINT VENTURE



CANOPY OPTION A



CANOPY OPTION B

PHASE 1 WEST - CAFE ENTRANCE

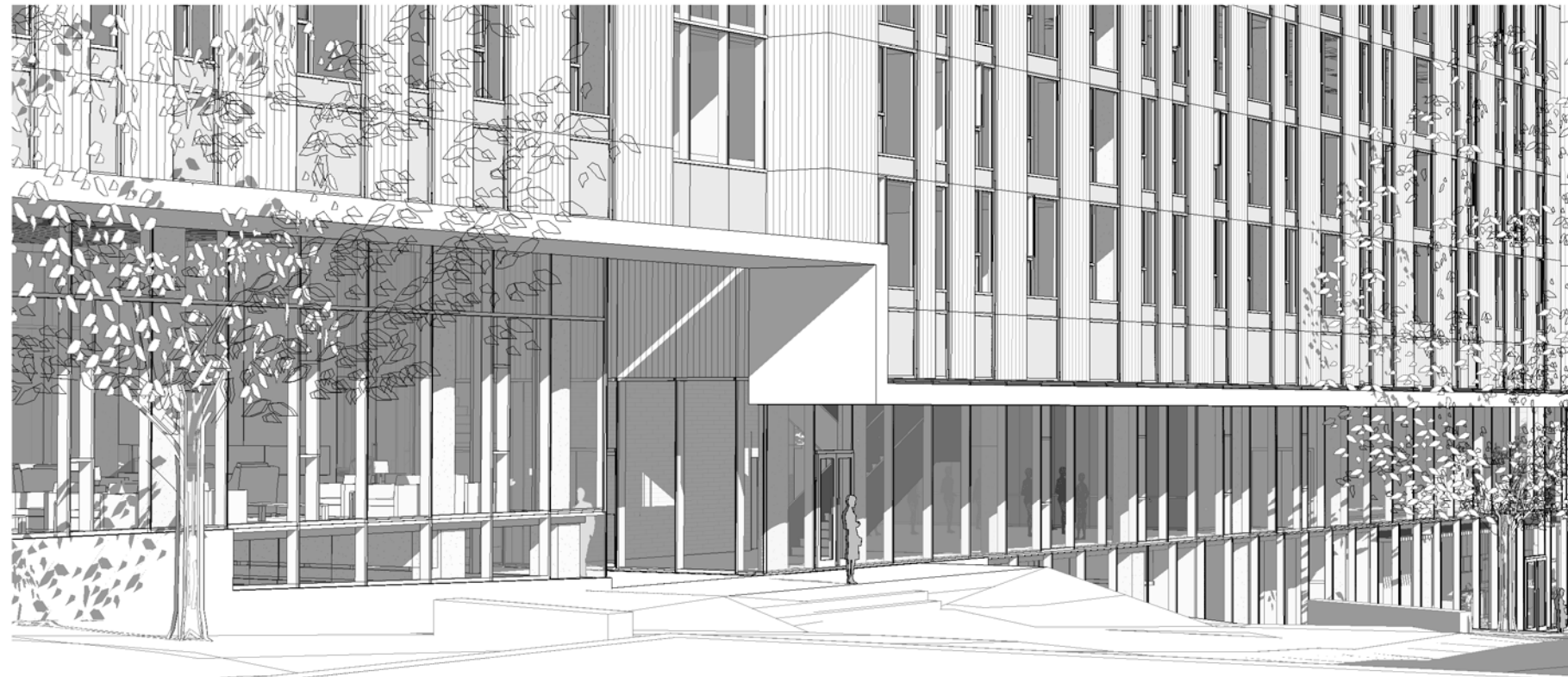
UBC PONDEROSA COMMONS
September 7, 2011

KUWABARA PAYNE MCKENNA BLUMBERG | HUGHES CONDON MARLER ARCHITECTS

ARCHITECTS IN JOINT VENTURE



CANOPY OPTION A



CANOPY OPTION B

PHASE 1 WEST - MIDDLE PATHWAY

UBC PONDEROSA COMMONS
September 7, 2011

KUWABARA PAYNE MCKENNA BLUMBERG | HUGHES CONDON MARLER ARCHITECTS

ARCHITECTS IN JOINT VENTURE



CANOPY OPTION A



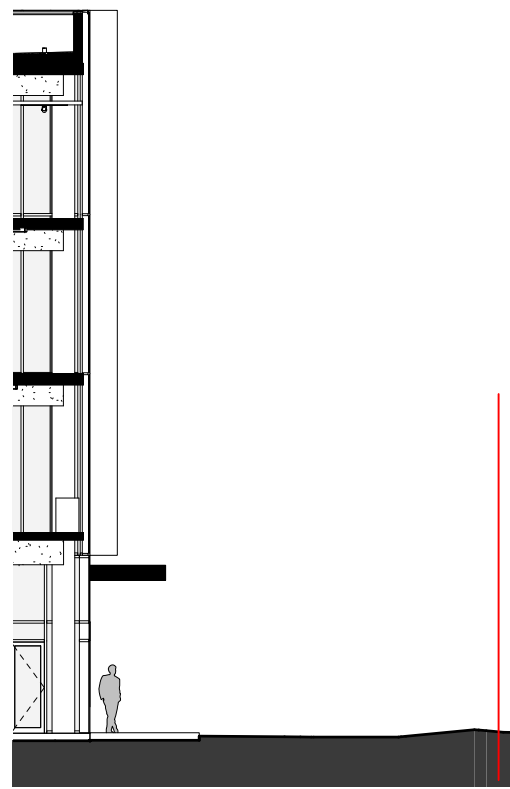
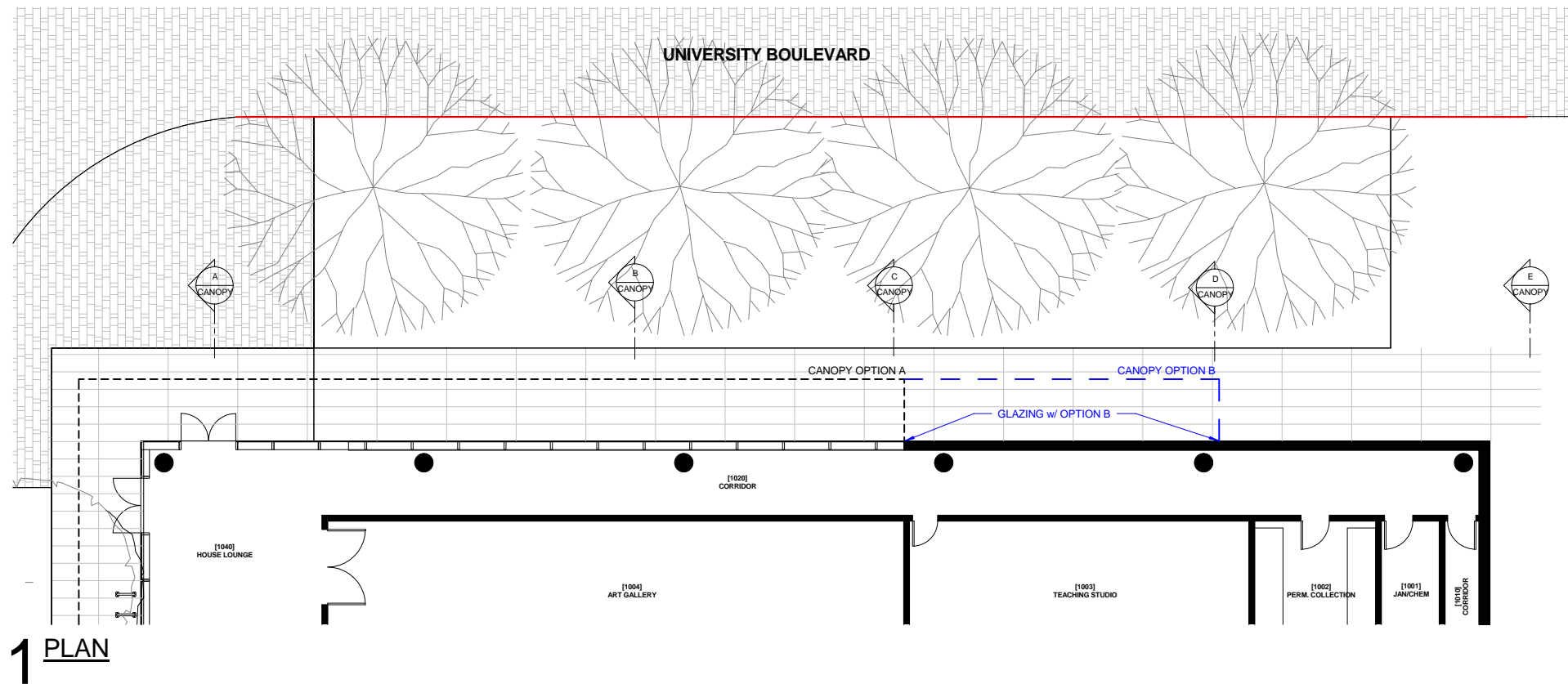
CANOPY OPTION B

PHASE 1 WEST - COLLEGIUM ENTRY

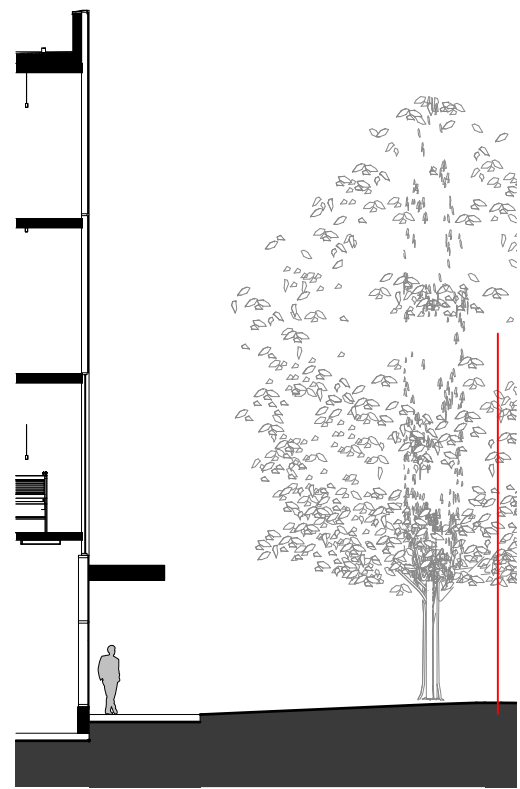
UBC PONDEROSA COMMONS
September 7, 2011

KUWABARA PAYNE MCKENNA BLUMBERG | HUGHES CONDON MARLER ARCHITECTS

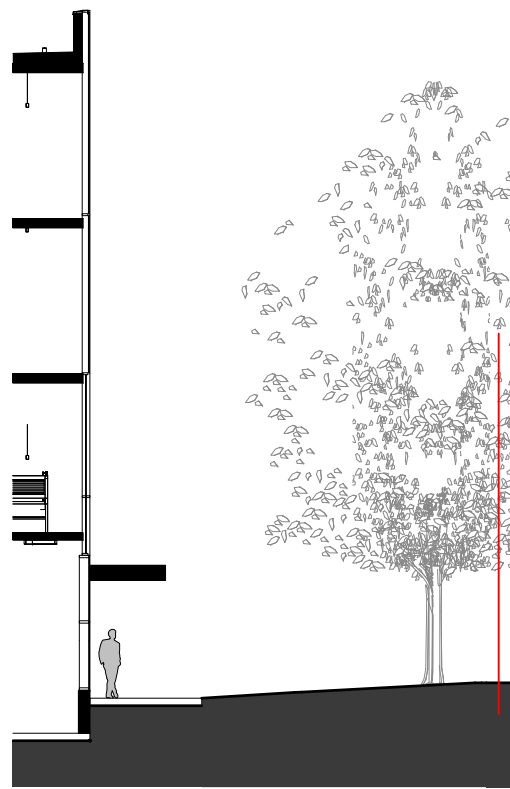
ARCHITECTS IN JOINT VENTURE



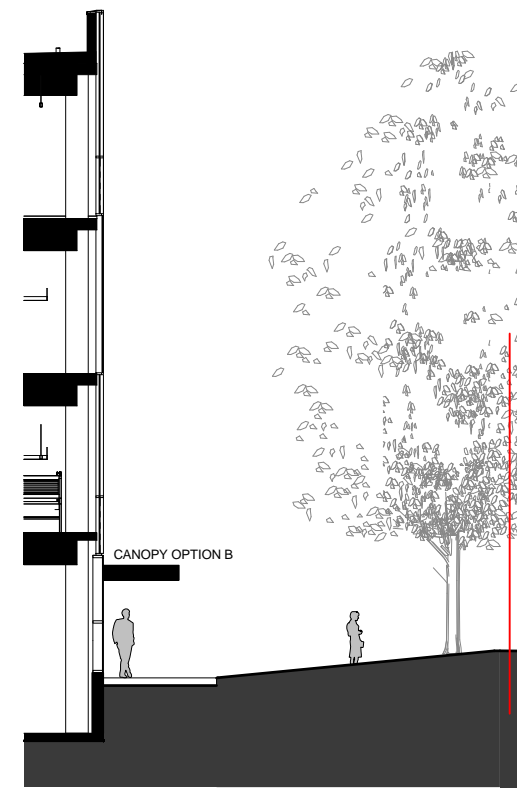
A SECTION



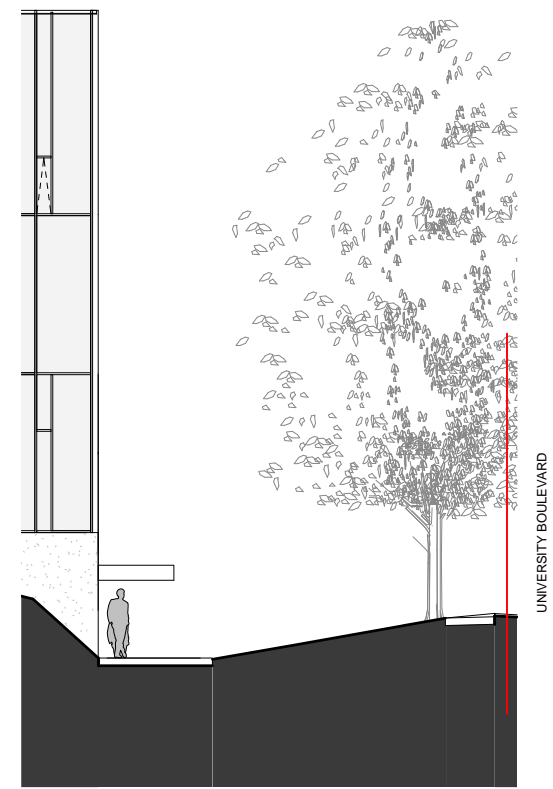
B SECTION



C SECTION



D SECTION



E SECTION

PHASE 1 EAST - CANOPY SECTIONS



PHASE 1 EAST - NORTH WEST CORNER

UBC PONDEROSA COMMONS
September 7, 2011

KUWABARA PAYNE MCKENNA BLUMBERG | HUGHES CONDON MARLER ARCHITECTS

ARCHITECTS IN JOINT VENTURE