

REVISIONS AND ISSUES

| NO. | DATE | DESCRIPTION |
|-----|------------|---------------|
| 1 | 2012/04/27 | ISSUED FOR DP |
| 2 | 2012/05/03 | ISSUED FOR DP |
| 3 | 2012/06/08 | ISSUED TO DRC |
| 4 | 2012/06/08 | ISSUED FOR DP |

- REMOVAL GENERAL NOTES**
- DO NOT SCALE DRAWING. LAYOUT AS PER DIMENSIONS NOTED ON LANDSCAPE PLANS. REPORT ANY DISCREPANCIES TO CONSULTANT FOR REVIEW AND RESPONSE PRIOR TO COMMENCING WORK.
 - THE LOCATIONS OF UTILITIES SHOWN IS APPROXIMATE ONLY. THE EXACT LOCATION SHOULD BE DETERMINED BY CONSULTING THE MUNICIPAL AUTHORITIES AND UTILITY COMPANIES CONCERNED. THE CONTRACTOR SHALL PROVE THE LOCATION OF UTILITIES AND SHALL BE RESPONSIBLE FOR ADEQUATE PROTECTION FROM DAMAGE.
 - CONTRACTOR SHALL MAKE GOOD ALL DAMAGES TO EXISTING FEATURES SCHEDULED TO REMAIN, TO THE SATISFACTION OF THE CONTRACT ADMINISTRATOR.
 - NO STAGING OR STORAGE OF EQUIPMENT OR MATERIALS SHALL TAKE PLACE OUTSIDE OF DESIGNATED AREAS WITHOUT WRITTEN CONSENT.
 - CONTRACTOR SHALL DISPOSE OF MATERIALS OFF-SITE UNLESS OTHERS NOTED.
 - LANDSCAPE DRAWINGS ARE TO BE READ IN CONJUNCTION WITH SPECIFICATIONS AND THE DRAWINGS OF ALL OTHER DISCIPLINES INVOLVED.

- SALVAGING GENERAL NOTES**
- ALL BRICKS FROM MASONRY WALLS TO BE SALVAGED FOR REUSE IN PROJECT.
 - ALL BRICKS FROM PAVING AREAS TO BE SALVAGED FOR REUSE IN PROJECT.

MATERIALS LEGEND

| | |
|--|------------------------------------|
| | EXISTING ASPHALT TO BE REMOVED |
| | EXISTING CONCRETE TO BE REMOVED |
| | EXISTING GRAVEL TO BE REMOVED |
| | EXISTING PLANTS TO BE REMOVED |
| | EXISTING UNIT PAVING TO BE REMOVED |
| | EXISTING WALL/CURB TO BE REMOVED |
| | EXISTING WALL/CURB TO BE REDUCED |

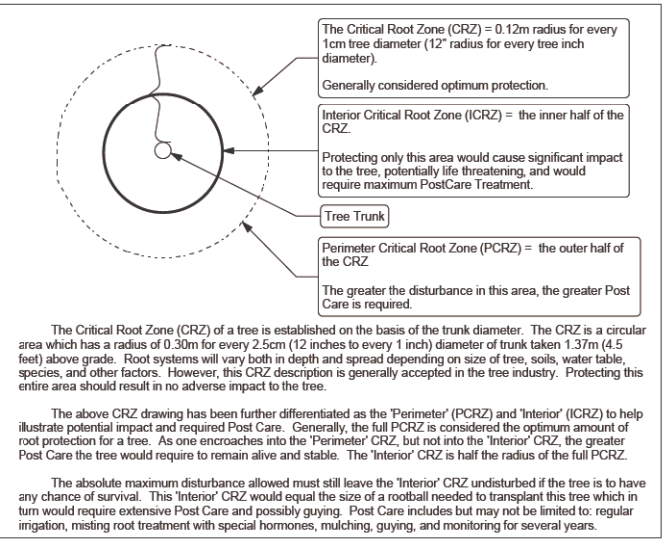
TREE LEGEND

| | |
|--|---|
| | EXISTING DECIDUOUS TREE TO REMAIN |
| | EXISTING CONIFEROUS TREE TO REMAIN |
| | EXISTING DECIDUOUS TREE TO BE RELOCATED |
| | EXISTING TREE TO BE REMOVED |

PROTECTION LEGEND

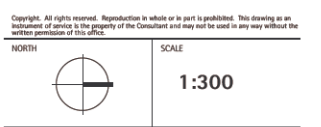
| | |
|--|-------------------------|
| | TREE PROTECTION BARRIER |
|--|-------------------------|

- TREE PROTECTION GENERAL NOTES**
- A. EXCAVATION AROUND TREES**
- EXCAVATION WITHIN DRIP LINE OF TREES ONLY WHERE INDICATED ON PLANS AND AS DIRECTED BY THE CONSULTANT.
 - DURING ANY EXCAVATION WITHIN THE DRIP LINE OF A TREE THE CONTRACTOR SHALL EXCAVATE AROUND TREE ROOTS AS DIRECTED BY THE CONSULTANT. DO NOT CUT TREE ROOTS UNLESS DIRECTED BY THE CONSULTANT.
 - TREES AND OTHER DESIRABLE VEGETATION TO BE TOTALLY FENCED BY 1.8M (6') HIGH SEMI-PERMANENT CHAIN-LINK FENCING. FENCING TO BE MAINTAINED FOR THE DURATION OF THE PROJECT.
- B. EXCAVATION FOR NEW CONSTRUCTION WITHIN THE DRIP LINES OF TREES**
- HAND EXCAVATE TO MINIMIZE DAMAGE TO ROOT SYSTEMS.
 - USE NARROW TINE SPADING FORKS TO PROBE AND COMB SOIL TO EXPOSE ROOTS.
 - RELOCATE ROOTS INTO BACKFILL AREAS WHENEVER POSSIBLE. IF LARGE MAIN LATERAL ROOTS ARE ENCOUNTERED, EXPOSE BEYOND EXCAVATION LIMITS AS REQUIRED TO BEND AND RELOCATE WITHOUT BREAKING.
- C. UTILITY TRENCHING WITHIN THE DRIP LINES OF TREES**
- TUNNEL UNDER AND AROUND ROOTS BY HAND DIGGING.
 - DO NOT CUT MAIN LATERAL ROOTS.
 - CUTTING OF SMALLER ROOTS THAT INTERFERE WITH INSTALLATION OF NEW WORK SHALL BE DONE WITH CLEAN SHARP TREE PRUNING TOOLS.
 - ROOTS THAT ARE ENCOUNTERED IMMEDIATELY ADJACENT TO THE LOCATION OF NEW CONSTRUCTION AND ARE TOO DIFFICULT TO RELOCATE SHALL BE CUT 150MM (6") BACK FROM NEW CONSTRUCTION. USE CLEAN SHARP TREE PRUNING TOOLS.
- D. PROTECTION OF EXPOSED ROOTS**
- DO NOT ALLOW EXPOSED ROOTS TO DRY OUT PRIOR TO PLACEMENT OF PERMANENT COVER. PROVIDE ONE OF THE FOLLOWING TEMPORARY REMEDIAL MEASURES:
 - A. PROVIDE TEMPORARY EARTH COVER. MAINTAIN MOISTURE.
 - B. PACK WITH WET PEAT MOSS. MAINTAIN MOISTURE.
 - C. PACK WITH FOUR LAYERS OF WET UNTREATED BURLAP. MAINTAIN MOISTURE.
 - TEMPORARILY SUPPORT AND PROTECT EXPOSED ROOTS FROM DAMAGE UNTIL PERMANENTLY RELOCATED AND COVERED WITH BACKFILL.
 - WATER PUDDLE BACKFILL AROUND ROOTS TO ELIMINATE VOIDS AND AIR POCKETS.



PROJECT
 UBC Totem Planning

DRAWING TITLE
 Tree Management & Removals Plan



| | |
|-------------|----------------------------------|
| PROJECT NO. | 1216 |
| DATE | May 3, 2012 |
| FILE NAME | 1216 TD tree management plan.vwx |
| PLOTTED | 6/12/12 at 4:23:54 PM |
| DRAWN | KF/JL |
| REVIEWED | JW |

DRAWING
 L 0.00

| REVISIONS AND ISSUES | | |
|----------------------|------------|-------------------|
| NO. | DATE | DESCRIPTION |
| 1 | 2012/05/31 | ISSUED FOR REVIEW |
| 5 | 2012/06/08 | ISSUED FOR DP |



PROJECT
UBC Totem Planning

DRAWING TITLE
Overall Plan

Copyright: All rights reserved. Reproduction in whole or in part is prohibited. This drawing is an indication of service to the property of the Consultant and may not be used in any way without the written permission of the office.

NORTH  SCALE
1:300

| | |
|-------------|----------------------|
| PROJECT NO. | 1216 |
| DATE | May 31, 2012 |
| FILE NAME | 1216 PLAN colour_vwx |
| PLOTTED | 6/8/12 at 2:58:13 PM |
| DRAWN | JL/KF |
| REVIEWED | JW |
| DRAWING | |

L 1.00



PAVING MATERIALS

| | |
|----|--|
| 1 | CAST IN PLACE CONCRETE PAVING - HEAVY DUTY FINISH: LIGHT SANDBLAST COLOUR: NATURAL CONTROL JOINT: SAWCUTS |
| 2 | CAST IN PLACE CONCRETE PAVING - LIGHT DUTY FINISH: LIGHT SANDBLAST COLOUR: NATURAL CONTROL JOINT: SAW CUT |
| 3 | EXISTING BRICK PAVING TO REMAIN * WITH ADJUSTMENTS TO EXTENT OF OPEN PLANTING AREA AND PERIMETER OF FRAME |
| 4 | PERMEABLE PAVING |
| 5 | ASPHALT PAVING - VEHICULAR |
| 6 | ASPHALT PAVING RAMP - VEHICULAR |
| 7 | EXISTING PAVING TO REMAIN AND BE PROTECTED |
| 8 | CONCRETE ROLLED CURB |
| 9 | CONCRETE BARRIER CURB |
| 10 | CONCRETE FLUSH CURB |
| 11 | GRASS PAVERS |
| 12 | EXISTING CONCRETE STAIRS TO REMAIN AND BE PROTECTED |
| 13 | EXISTING CURB TO REMAIN AND BE PROTECTED |
| 14 | NEW CONCRETE PEDESTRIAN LETDOWN |
| 15 | FLUSH CURB INLET |
| 16 | RIVER ROCK SWALE |

SITE FURNISHINGS

| | |
|----|--|
| F1 | BOLLARD Type 1 TYPE: UBC STANDARD STATIONARY BOLLARD MODEL: SENTRY 2868 FINISH: UBC GREY HEIGHT: 42" DIAMETER: 8" MOUNTING: REMOVABLE |
| F2 | BOLLARD Type 2 TYPE: UBC STANDARD STATIONARY BOLLARD MODEL: SENTRY 2868 FINISH: UBC GREY HEIGHT: 42" DIAMETER: 8" MOUNTING: FLUSH MOUNT CONCRETE BASE |
| F3 | BIKE RACK * UBC STANDARD 'U', FLUSH MOUNT |
| F4 | RELOCATED EXISTING BIKE SHELTER |
| F5 | CUSTOM TOTEM BENCH |
| F6 | CUSTOM TOTEM METAL SIDE TABLE |

LANDSCAPE WALLS & STRUCTURES

| | |
|----|---|
| W1 | NEW TOTEM PARK STYLE WALL * 750MM MAX. HEIGHT, FREESTANDING, BRICK BOTH SIDES, CONCRETE CAP |
| W2 | TOTEM PARK NAME WALL * SIGNAGE ON EXISTING WALL WITH DOWN LIGHTING |
| W3 | RESIDENCE NAME WALL * 1.2M MAX. HEIGHT, FREESTANDING, BRICK BOTH SIDES, CONCRETE CAP WITH DOWN LIGHTING |
| W4 | EXISTING LANDSCAPE WALL TO REMAIN AND BE PROTECTED |
| W5 | GARBAGE ENCLOSURE * T.B.D. |
| W6 | EXISTING LANDSCAPE WALL TO BE REMOVED * BRICK TO BE STORED AND REUSED ON SITE |
| W7 | AUTOMATIC VEHICLE GATE |
| W8 | EXISTING COLONADE TO REMAIN |

LIGHTING

| | |
|----|--|
| SA | UBC STANDARD POLE LIGHT REFER TO ELECTRICAL DRAWINGS |
| SB | UBC STANDARD BOLLARD LIGHT REFER TO ELECTRICAL DRAWINGS |

NOTE:

NEW POLE-MOUNTED LIGHTING TO CONFORM TO UBC GUIDELINES.

LAYOUT AND MATERIALS GENERAL NOTES

- DO NOT SCALE DRAWING. LAYOUT AS PER DIMENSIONS NOTED ON LANDSCAPE PLANS. REPORT ANY DISCREPANCIES TO CONSULTANT FOR REVIEW AND RESPONSE PRIOR TO COMMENCING WORK.
- THE LOCATIONS OF UTILITIES SHOWN IS APPROXIMATE ONLY. THE EXACT LOCATION SHOULD BE DETERMINED BY CONSULTING THE MUNICIPAL AUTHORITIES AND UTILITY COMPANIES CONCERNED. THE CONTRACTOR SHALL PROVIDE THE LOCATION OF UTILITIES AND SHALL BE RESPONSIBLE FOR ADEQUATE PROTECTION FROM DAMAGE.
- CONTRACTOR SHALL MAKE GOOD ALL DAMAGES TO EXISTING FEATURES SCHEDULED TO REMAIN, TO THE SATISFACTION OF THE CONTRACT ADMINISTRATOR.
- NO STAGING OR STORAGE OF EQUIPMENT OR MATERIALS SHALL TAKE PLACE OUTSIDE OF DESIGNATED AREAS WITHOUT WRITTEN CONSENT.
- CONTRACTOR SHALL DISPOSE OF MATERIALS OFF-SITE UNLESS OTHERS NOTED.
- LANDSCAPE DRAWINGS ARE TO BE READ IN CONJUNCTION WITH SPECIFICATIONS AND THE DRAWINGS OF ALL OTHER DISCIPLINES INVOLVED.



PWL Partnership Landscape Architects Inc.
5th Floor, East Asiatic House
1201 West Pender Street
Vancouver BC Canada V6C 2Y2
www.pwlpairtnership.com
T 604.688.8111
F 604.688.8112

REVISIONS AND ISSUES

| NO. | DATE | DESCRIPTION |
|-----|------------|-------------------|
| 1 | 2012/04/27 | ISSUED FOR DP |
| 2 | 2012/05/03 | ISSUED FOR DP |
| 3 | 2012/05/17 | ISSUED TO DRC |
| 4 | 2012/05/31 | ISSUED FOR REVIEW |
| 5 | 2012/06/08 | ISSUED FOR DP |

PROJECT
UBC Totem Planning

DRAWING TITLE
Materials Plan

Copyright. All rights reserved. Reproduction in whole or in part is prohibited. This drawing is an illustration of services to the property of the Consultant and may not be used in any way without the written permission of this office.



| | |
|-------------|-----------------------|
| PROJECT NO. | 1216 |
| DATE | June 08, 2012 |
| FILE NAME | 1216 PLAN colour_vwx |
| PLOTTED | 6/12/12 at 2:18:02 PM |
| DRAWN | JL/KF |
| REVIEWED | JW |
| DRAWING | |

L 1.01



PAVING MATERIALS

| | |
|----|--|
| 1 | CAST IN PLACE CONCRETE PAVING - HEAVY DUTY FINISH: LIGHT SANDBLAST COLOUR: NATURAL CONTROL JOINT: SAWCUTS |
| 2 | CAST IN PLACE CONCRETE PAVING - LIGHT DUTY FINISH: LIGHT SANDBLAST COLOUR: NATURAL CONTROL JOINT: SAW CUT |
| 3 | EXISTING BRICK PAVING TO REMAIN • WITH ADJUSTMENTS TO EXTENT OF OPEN PLANTING AREA AND PERIMETER OF FRAME |
| 4 | PERMEABLE PAVING |
| 5 | ASPHALT PAVING - VEHICULAR |
| 6 | ASPHALT PAVING RAMP - VEHICULAR |
| 7 | EXISTING PAVING TO REMAIN AND BE PROTECTED |
| 8 | CONCRETE ROLLED CURB |
| 9 | CONCRETE BARRIER CURB |
| 10 | CONCRETE FLUSH CURB |
| 11 | GRASS PAVERS |
| 12 | EXISTING CONCRETE STAIRS TO REMAIN AND BE PROTECTED |
| 13 | EXISTING CURB TO REMAIN AND BE PROTECTED |
| 14 | NEW CONCRETE PEDESTRIAN LETDOWN |
| 15 | FLUSH CURB INLET |
| 16 | RIVER ROCK SWALE |

SITE FURNISHINGS

| | |
|----|--|
| F1 | BOLLARD Type 1 TYPE: UBC STANDARD STATIONARY BOLLARD MODEL: SENTRY 2888 FINISH: UBC GREY HEIGHT: 42" DIAMETER: 8" MOUNTING: REMOVABLE |
| F2 | BOLLARD Type 2 TYPE: UBC STANDARD STATIONARY BOLLARD MODEL: SENTRY 2888 FINISH: UBC GREY HEIGHT: 42" DIAMETER: 8" MOUNTING: FLUSH MOUNT CONCRETE BASE |
| F3 | BIKE RACK • UBC STANDARD 'U', FLUSH MOUNT |
| F4 | RELOCATED EXISTING BIKE SHELTER |
| F5 | CUSTOM TOTEM BENCH |
| F6 | CUSTOM TOTEM METAL SIDE TABLE |

LANDSCAPE WALLS & STRUCTURES

| | |
|----|--|
| W1 | NEW TOTEM PARK STYLE WALL • 750MM MAX. HEIGHT, FREESTANDING, BRICK BOTH SIDES, CONCRETE CAP |
| W2 | TOTEM PARK NAME WALL • SIGNAGE ON EXISTING WALL WITH DOWN LIGHTING |
| W3 | RESIDENCE NAME WALL • 1.2M MAX. HEIGHT, FREESTANDING, BRICK BOTH SIDES, CONCRETE CAP WITH DOWN LIGHTING |
| W4 | EXISTING LANDSCAPE WALL TO REMAIN AND BE PROTECTED |
| W5 | GARBAGE ENCLOSURE • T.B.D. |
| W6 | EXISTING LANDSCAPE WALL TO BE REMOVED • BRICK TO BE STORED AND REUSED ON SITE |
| W7 | AUTOMATIC VEHICLE GATE |
| W8 | EXISTING COLONADE TO REMAIN |

LIGHTING

| | |
|----|--|
| SA | UBC STANDARD POLE LIGHT REFER TO ELECTRICAL DRAWINGS |
| SB | UBC STANDARD BOLLARD LIGHT REFER TO ELECTRICAL DRAWINGS |

NOTE:

NEW POLE-MOUNTED LIGHTING TO CONFORM TO UBC GUIDELINES.

LAYOUT AND MATERIALS GENERAL NOTES

- DO NOT SCALE DRAWING. LAYOUT AS PER DIMENSIONS NOTED ON LANDSCAPE PLANS. REPORT ANY DISCREPANCIES TO CONSULTANT FOR REVIEW AND RESPONSE PRIOR TO COMMENCING WORK.
- THE LOCATIONS OF UTILITIES SHOWN IS APPROXIMATE ONLY. THE EXACT LOCATION SHOULD BE DETERMINED BY CONSULTING THE MUNICIPAL AUTHORITIES AND UTILITY COMPANIES CONCERNED. THE CONTRACTOR SHALL PROVE THE LOCATION OF UTILITIES AND SHALL BE RESPONSIBLE FOR ADEQUATE PROTECTION FROM DAMAGE.
- CONTRACTOR SHALL MAKE GOOD ALL DAMAGES TO EXISTING FEATURES SCHEDULED TO REMAIN, TO THE SATISFACTION OF THE CONTRACT ADMINISTRATOR.
- NO STAGING OR STORAGE OF EQUIPMENT OR MATERIALS SHALL TAKE PLACE OUTSIDE OF DESIGNATED AREAS WITHOUT WRITTEN CONSENT.
- CONTRACTOR SHALL DISPOSE OF MATERIALS OFF-SITE UNLESS OTHERS NOTED.
- LANDSCAPE DRAWINGS ARE TO BE READ IN CONJUNCTION WITH SPECIFICATIONS AND THE DRAWINGS OF ALL OTHER DISCIPLINES INVOLVED.

REVISIONS AND ISSUES

| NO. | DATE | DESCRIPTION |
|-----|------------|-------------------|
| 1 | 2012/04/27 | ISSUED FOR DP |
| 2 | 2012/05/03 | ISSUED FOR DP |
| 3 | 2012/05/17 | ISSUED TO DRC |
| 4 | 2012/05/31 | ISSUED FOR REVIEW |
| 5 | 2012/06/08 | ISSUED FOR DP |

PROJECT

Ubc Totem Planning

DRAWING TITLE

Materials Plan

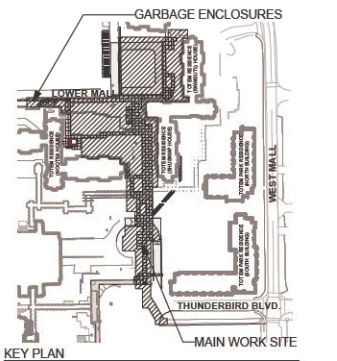
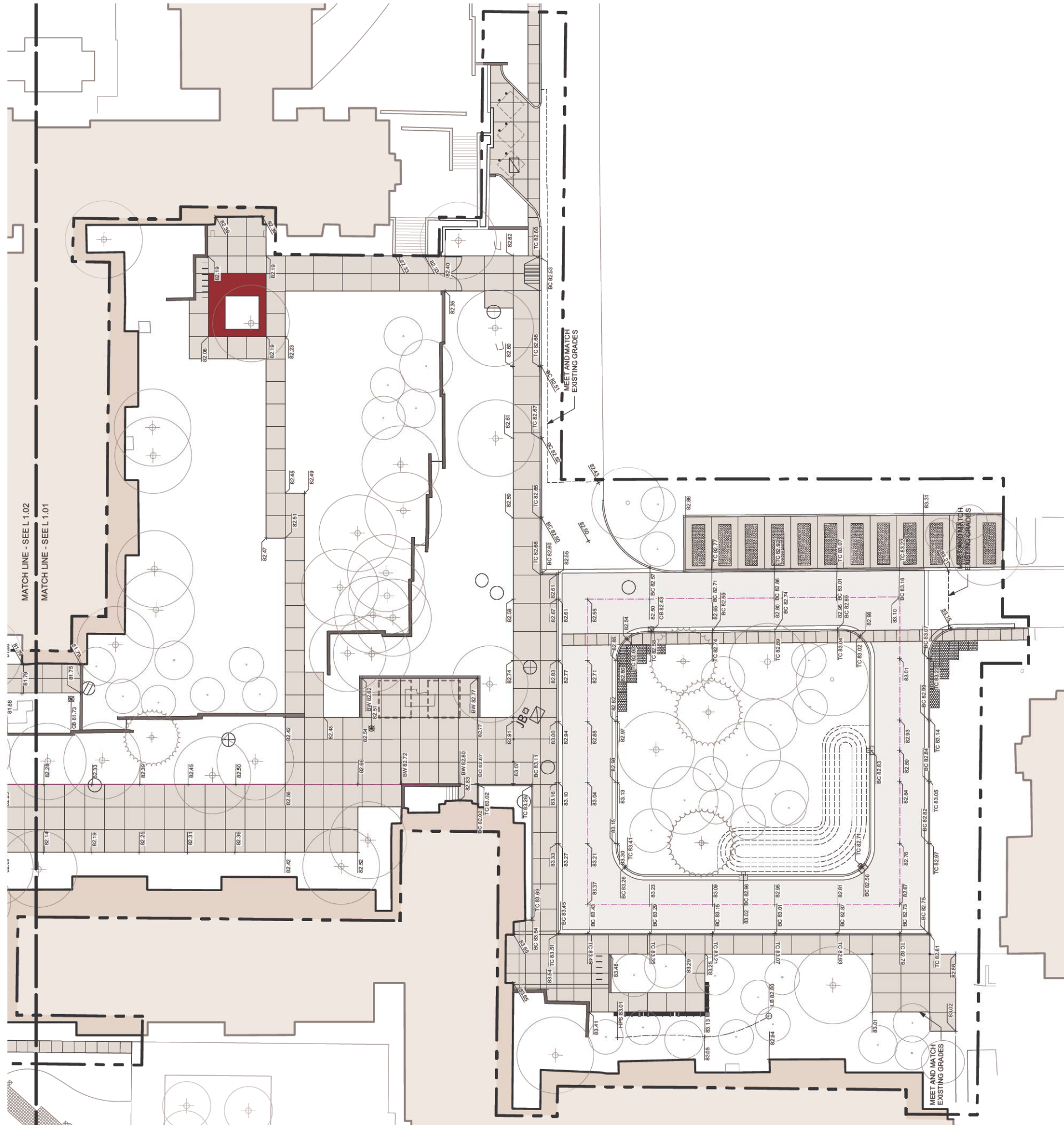
Copyright: All rights reserved. Reproduction in whole or in part is prohibited. This drawing is an instrument of service to the property of the Consultant and may not be used in any way without the written permission of this office.



| | |
|-------------|-----------------------|
| PROJECT NO. | 1216 |
| DATE | June 08, 2012 |
| FILE NAME | 1216 PLAN colour_vwx |
| PLOTTED | 6/12/12 at 2:18:02 PM |
| DRAWN | JL/KF |
| REVIEWED | JW |

L 1.02

| REVISIONS AND ISSUES | | |
|----------------------|------------|---------------|
| NO. | DATE | DESCRIPTION |
| 1 | 2012/05/17 | ISSUED TO DRC |
| 2 | 2012/06/08 | ISSUED FOR DP |



GRADING

| | |
|----------------|--|
| EXISTING GRADE | |
| TOP OF CURB | |
| BOTTOM OF CURB | |
| BOTTOM OF WALL | |
| TOP OF WALL | |
| CATCH BASIN | |

GRADING GENERAL NOTES

- REFER TO ARCHITECTURAL PLANS, SECTIONS AND ELEVATIONS FOR TOP OF SLAB ELEVATIONS. SLAB ELEVATIONS INDICATED ON LANDSCAPE DRAWINGS ARE FOR REFERENCE ONLY. REPORT ANY DISCREPANCIES TO CONSULTANT FOR REVIEW AND RESPONSE.
- CONFIRM ALL EXISTING GRADES PRIOR TO CONSTRUCTION. REPORT ANY DISCREPANCIES TO CONSULTANT FOR REVIEW AND RESPONSE.
- GROWING MEDIUM DEPTHS ON ARCHITECTURAL SLAB ARE NOT TO EXCEED THOSE SPECIFIED IN SECTION 0212. REPORT ANY DISCREPANCIES TO CONSULTANT FOR REVIEW AND RESPONSE.
- SLAB DRAINS AND PLANTER SLAB DRAINS ARE SHOWN FOR REFERENCE ONLY AND ARE TO BE READ IN CONJUNCTION WITH MECHANICAL ENGINEERING DRAWINGS. REPORT ANY DISCREPANCIES TO CONSULTANT FOR REVIEW AND RESPONSE.
- UNLESS OTHERWISE NOTED ALL DRAINS LOCATED IN LAWN OR PLANTED AREAS TO BE COMPLETE WITH INSPECTION CHAMBER AND CLEANOUT AS DETAILED ON LANDSCAPE DRAWINGS.
- UNLESS OTHERWISE NOTED PROVIDE A MINIMUM SLOPE OF 2% ON ALL HARD AND SOFT LANDSCAPE AREAS TO ENSURE POSITIVE DRAINAGE AWAY FROM BUILDINGS OR TO DRAINAGE STRUCTURES.
- UNLESS OTHERWISE NOTED MAXIMUM SLOPE OF SOFT LANDSCAPE AREAS TO BE 3:1 (33%). REPORT ANY DISCREPANCIES TO CONSULTANT FOR REVIEW AND RESPONSE.

PROJECT
UBC Totem Planning

DRAWING TITLE
Grading Plan

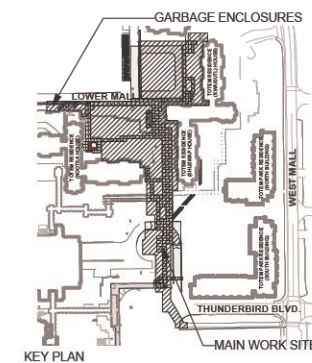
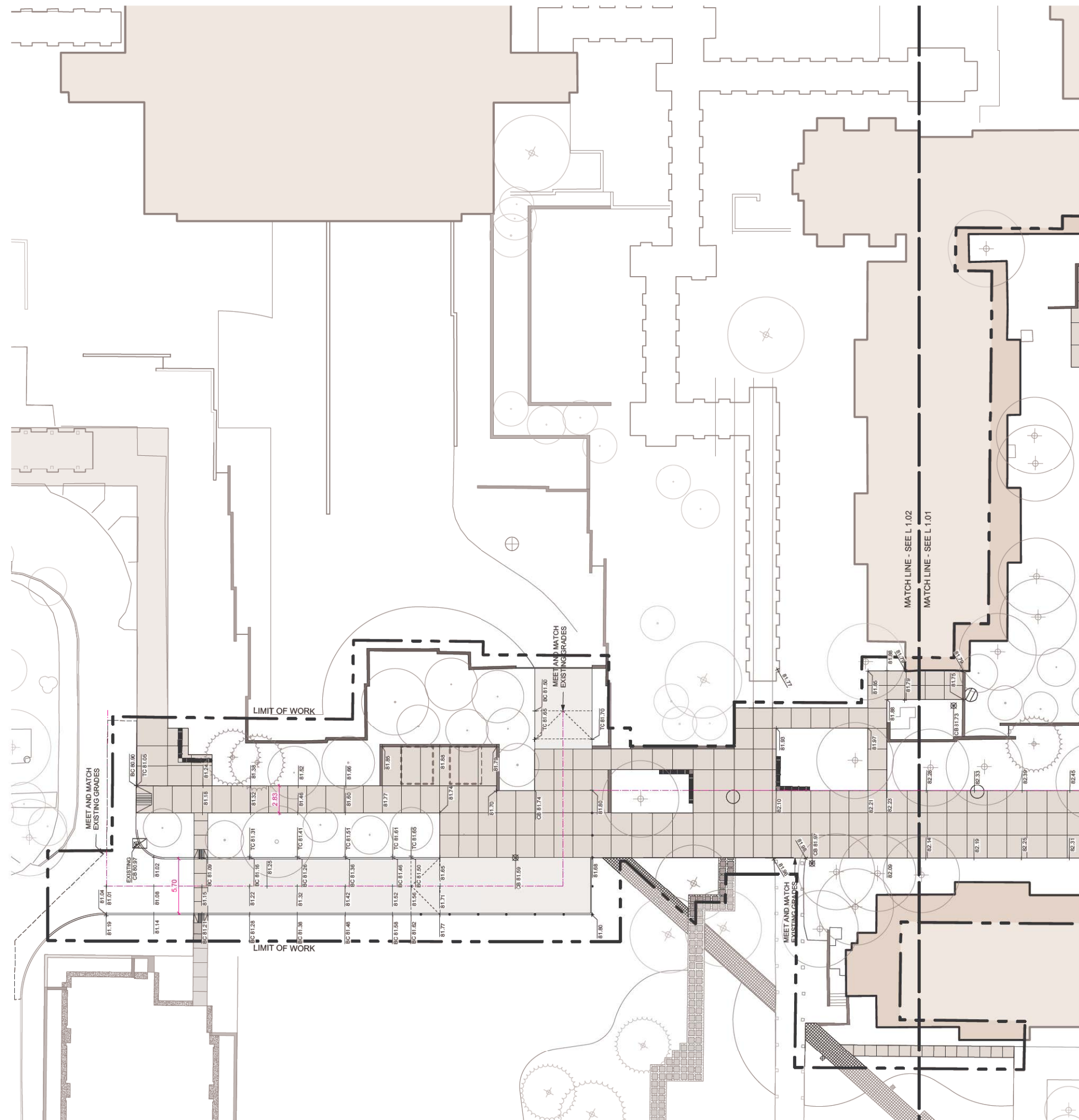
Copyright. All rights reserved. Reproduction in whole or in part is prohibited. This drawing is an instrument of service in the property of the Consultant and may not be used in any way without the written permission of the office.



| | |
|-------------|-----------------------|
| PROJECT NO. | 1216 |
| DATE | May 17, 2012 |
| FILE NAME | 1216 TD PLAN.vwx |
| PLOTTED | 6/8/12 at 11:34:21 AM |
| DRAWN | KF |
| REVIEWED | JW |
| DRAWING | |

L 2.01

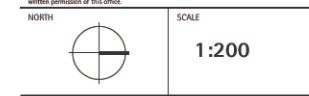
| REVISIONS AND ISSUES | | |
|----------------------|------------|---------------|
| NO. | DATE | DESCRIPTION |
| 1 | 2012/05/17 | ISSUED TO DRC |
| 2 | 2012/06/08 | ISSUED FOR DP |



PROJECT
UBC Totem Planning

DRAWING TITLE
Grading Plan

COPYRIGHT: All rights reserved. Reproduction in whole or in part is prohibited. This drawing is an extension of service to the property of the Consultant and may not be used in any way without the written permission of this office.



| | |
|-------------|-----------------------|
| PROJECT NO. | 1216 |
| DATE | May 17, 2012 |
| FILE NAME | 1216 TD PLAN.vwx |
| PLOTTED | 6/8/12 at 11:34:21 AM |
| DRAWN | KF |
| REVIEWED | JW |

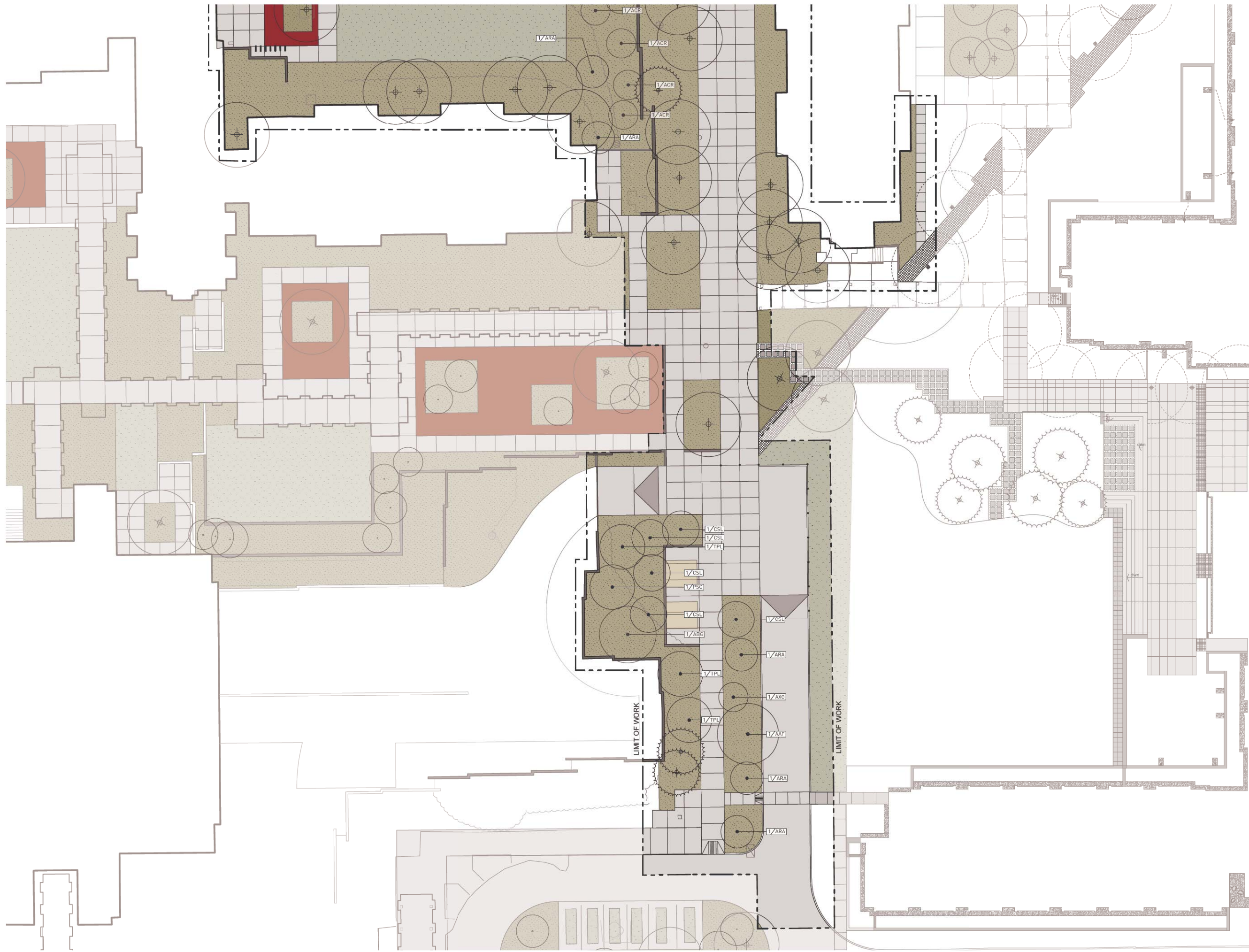
L 2.02

GRADING

| | |
|----------------|----------|
| EXISTING GRADE | BC 82.50 |
| TOP OF CURB | TC 83.02 |
| BOTTOM OF CURB | BC 83.02 |
| BOTTOM OF WALL | BW 83.02 |
| TOP OF WALL | TW 83.02 |
| CATCH BASIN | CB 83.02 |

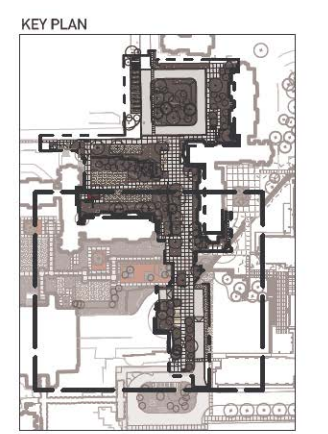
GRADING GENERAL NOTES

- REFER TO ARCHITECTURAL PLANS, SECTIONS AND ELEVATIONS FOR TOP OF SLAB ELEVATIONS. SLAB ELEVATIONS INDICATED ON LANDSCAPE DRAWINGS ARE FOR REFERENCE ONLY. REPORT ANY DISCREPANCIES TO CONSULTANT FOR REVIEW AND RESPONSE.
- CONFIRM ALL EXISTING GRADES PRIOR TO CONSTRUCTION. REPORT ANY DISCREPANCIES TO CONSULTANT FOR REVIEW AND RESPONSE.
- GROWING MEDIUM DEPTHS ON ARCHITECTURAL SLAB ARE NOT TO EXCEED THOSE SPECIFIED IN SECTION 0212. REPORT ANY DISCREPANCIES TO CONSULTANT FOR REVIEW AND RESPONSE.
- SLAB DRAINS AND PLANTER SLAB DRAINS ARE SHOWN FOR REFERENCE ONLY AND ARE TO BE READ IN CONJUNCTION WITH MECHANICAL ENGINEERING DRAWINGS. REPORT ANY DISCREPANCIES TO CONSULTANT FOR REVIEW AND RESPONSE.
- UNLESS OTHERWISE NOTED: NO 100 ALL LIRAINS 100 IN LAWN OR PLANT 100 HOURS 100 HOURS COMPLETE WITH INSPECTION CHAMBER AND CLEANTOUT AS DETAILED ON LANDSCAPE DRAWINGS.
- UNLESS OTHERWISE NOTED PROVIDE A MINIMUM SLOPE OF 2% ON ALL HARD AND SOFT LANDSCAPE AREAS TO ENSURE POSITIVE DRAINAGE AWAY FROM BUILDINGS OR TO DRAINAGE STRUCTURES.
- UNLESS OTHERWISE NOTED MAXIMUM SLOPE OF SOFT LANDSCAPE AREAS TO BE 3:1 (33%). REPORT ANY DISCREPANCIES TO CONSULTANT FOR REVIEW AND RESPONSE.



REVISIONS AND ISSUES


| NO. | DATE | DESCRIPTION |
|-----|------------|-------------------|
| 0 | 2012/06/31 | ISSUED FOR REVIEW |
| 1 | 2012/06/08 | ISSUED FOR DP |



PROJECT
UBC Totem Planning

DRAWING TITLE
Tree Plan Part 2

Copyright. All rights reserved. Reproduction in whole or in part is prohibited. This drawing is an instrument of service to the property of the Consultant and may not be used in any way without the written permission of this office.

NORTH  SCALE **1:200**

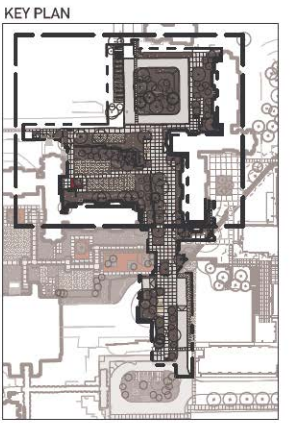
| | |
|-------------|---------------------------|
| PROJECT NO. | 1216 |
| DATE | June 08, 2012 |
| FILE NAME | 1216 TD Planting Plan.vwx |
| PLOTTED | 6/12/12 at 5:06:41 PM |
| DRAWN | JL |
| REVIEWED | JW |

DRAWING
L 4.02



REVISIONS AND ISSUES

| NO. | DATE | DESCRIPTION |
|-----|------------|-------------------|
| 0 | 2012/06/31 | ISSUED FOR REVIEW |
| 1 | 2012/06/08 | ISSUED FOR DP |



PROJECT
UBC Totem Planning

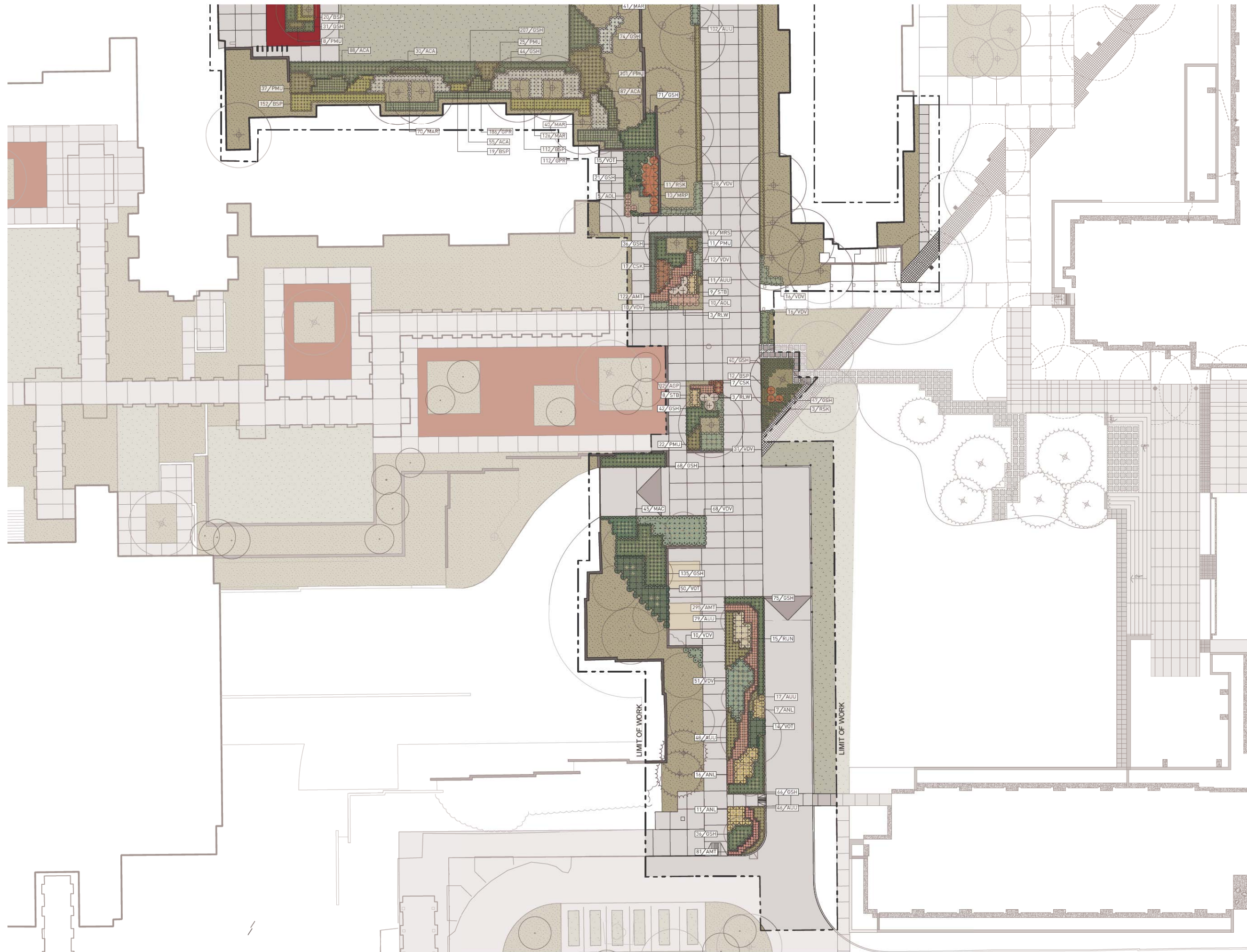
DRAWING TITLE
Planting Plan Part 1

Copyright. All rights reserved. Reproduction in whole or in part is prohibited. This drawing as an instrument of service is the property of the Consultant and may not be used in any way without the written permission of this office.



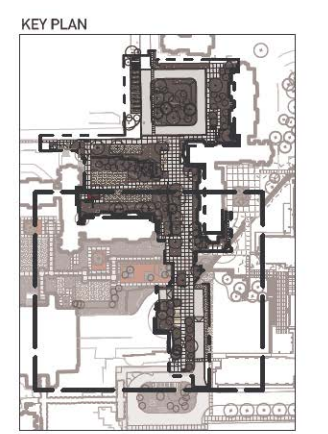
| | |
|-------------|---------------------------|
| PROJECT NO. | 1216 |
| DATE | June 08, 2012 |
| FILE NAME | 1216 TD Planting Plan.vwx |
| PLOTTED | 6/12/12 at 5:06:31 PM |
| DRAWN | JL |
| REVIEWED | JW |

L 4.03



REVISIONS AND ISSUES


| NO. | DATE | DESCRIPTION |
|-----|------------|-------------------|
| 0 | 2012/06/31 | ISSUED FOR REVIEW |
| 1 | 2012/06/08 | ISSUED FOR DP |



PROJECT
UBC Totem Planning

DRAWING TITLE
Planting Plan Part 2

Copyright. All rights reserved. Reproduction in whole or in part is prohibited. This drawing is an instrument of service to the property of the Consultant and may not be used in any way without the written permission of this office.

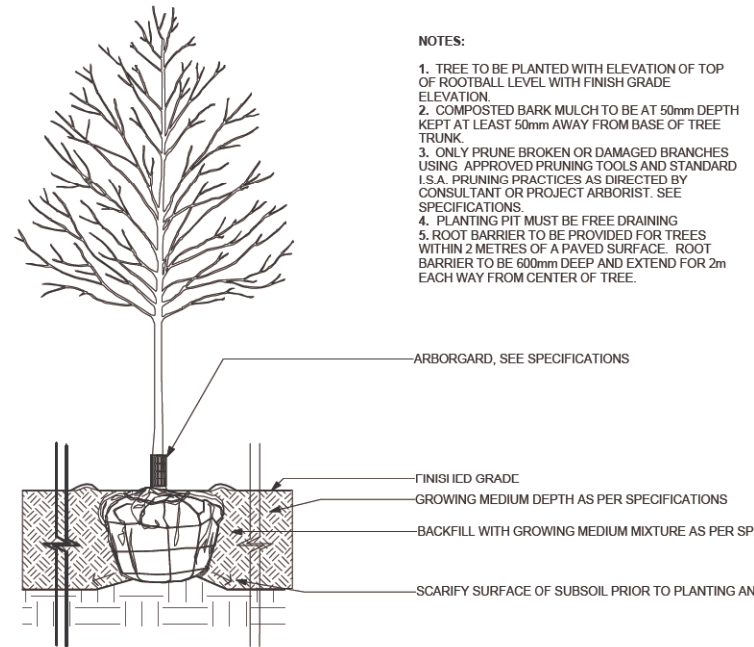
NORTH  SCALE **1:200**

| | |
|-------------|---------------------------|
| PROJECT NO. | 1216 |
| DATE | June 08, 2012 |
| FILE NAME | 1216 TD Planting Plan.vwx |
| PLOTTED | 6/12/12 at 5:07:17 PM |
| DRAWN | JL |
| REVIEWED | JW |

L 4.04

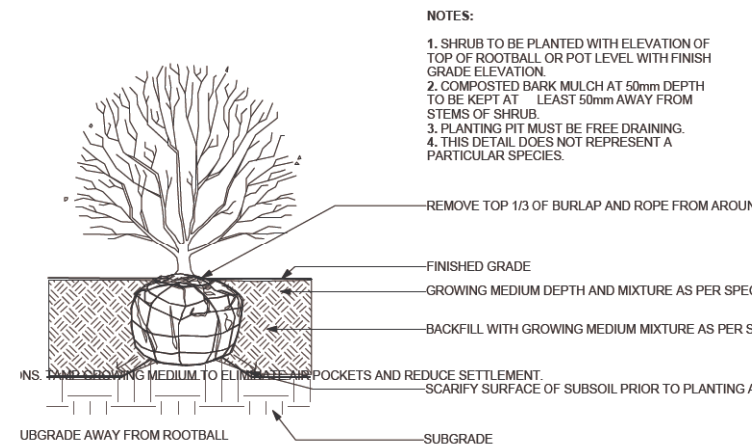
| REVISIONS AND ISSUES | | |
|----------------------|------------|---------------|
| NO. | DATE | DESCRIPTION |
| 0 | 2012/06/08 | ISSUED FOR DP |

| Plant List | | | | | | |
|---------------------------|------|--------------------------------------|-----------------------------------|-----------------------|-------------|--|
| UBC Totem Planning | | | | | | |
| ID | Qty | Botanical Name | Common Name | Scheduled Size | Spacing | Remarks |
| Trees | | | | | | |
| ABG | 4 | Abies grandis | Grand Fir | 3.0m ht. (9'-10" ht.) | As Shown | B&B, Nursery grown, well branched, dense tree |
| ACR | 20 | Acer circinatum | Vine Maple | 2.4 m ht. (8'-0" ht.) | As Shown | B&B, Nursery grown, minimum 3 stems |
| ARA | 11 | Acer rubrum 'Armstrong' | Armstrong Red Maple | 8cm cal. (3" cal.) | As Shown | B&B, Uniform branching, dense tree, 7' (2.1 m) std. |
| AAF | 4 | Acer rubrum 'Autumn Flame' | Autumn Flame Maple | | As Shown | Exactly as appears on plant database |
| AXG | 4 | Amelanchier x grandiflora | Serviceberry | 3.0 m ht. (9'-0" ht.) | As Shown | B&B, Multi-stemmed, dense tree, nursery grown |
| CSL | 11 | Cornus kousa x nuttallii 'Starlight' | Starlight Flowering Dogwood | B&B | As Shown | Nursery grown, well destablished. |
| PSC | 2 | Picea sitchensis | Sitka Spruce | 2.4 m ht. (8'-0" ht.) | As Shown | B&B, Well branched, dense tree, nursery grown |
| TPL | 4 | Thuja plicata | Western Red Cedar | 2.4 m ht. (8'-0" ht.) | As Shown | B&B, Well branched, dense tree, nursery grown |
| Shrubs | | | | | | |
| AGP | 591 | Azalea 'Gumpo Pink' | Gumpo Pink Azalea | #2 pot | 30cm (12") | Well established |
| ANL | 51 | Azalea 'Northern Lights' Mix | Mixed Northern Lights Azalea | #2 pot | 75cm (30") | Well established |
| AOL | 77 | Azalea 'Orchid Lights' | Orchid Lights Azalea | #2 pot | 75cm (30") | Well established |
| CSK | 24 | Cornus sericea 'Kelseyii' | Kelseyii Dogwood | #2 pot | 60cm (24") | Well established, nursery grown |
| GSH | 2439 | Gaultheria shallon | Salal | #2 pot | 45cm (18") | Well established, nursery grown |
| MAC | 570 | Mahonia aquifolium 'Compacta' | Compact Oregon Grape | #2 pot | 45cm (18") | Well established, nursery grown |
| RJM | 32 | Rhododendron 'Jean Marie' | Jean Marie Rhododendron | #2 pot | 60cm (24") | Well established |
| RLW | 6 | Rhododendron 'Loders White' | Loders White Rhododendron | #3 pot | 120cm (48") | Well established |
| RUN | 93 | Rhododendron 'Unique' | Unique Rhododendron | #3 pot | 75cm (30") | Well established |
| RSK | 14 | Ribes sanguineum 'King Edward VII' | King Edward VII Flowering Currant | #2 pot | 100cm (39") | Well established, nursery grown |
| SHH | 98 | Sarcococca hookeriana humilis | Himalayan Sarcococca | #2 pot | 45cm (18") | Well established |
| SMO | 131 | Symphoricarpos mollis | Creeping Snowberry | #2 pot | 60cm (24") | Nursery grown, well established. |
| VOT | 91 | Vaccinium ovatum 'Thunderbird' | Thunderbird Evergreen Huckleberry | #3 pot | 75cm (30") | Well established, nursery grown |
| VDV | 610 | Viburnum davidii | David Viburnum | #2 pot | 60cm (24") | Well established |
| Ground Cover | | | | | | |
| AUU | 670 | Arctostaphylos uva-ursi | Kinnikinnick | #1 pot | 38cm (15") | 15cm (6") leads. Minimum 3 leads |
| ACA | 260 | Asarum caudatum | Wild Ginger | #1 pot | 30cm (12") | 10cm (4") ht. Dense plant, nursery grown |
| GPR | 1521 | Gaultheria procumbens | Wintergreen | #1 pot | 30cm (12") | 10cm (4") height |
| MRP | 202 | Mahonia nervosa | Dwarf Oregon Grape | #1 pot | 40cm (16") | Well established, nursery grown |
| MRS | 66 | Mahonia repens | Creeping Barberry | #1 pot | 40cm (16") | Well established, nursery grown |
| VLS | 469 | Viola sempervirens | Evergreen Violet | 10cm pot | 15cm (6") | 10cm (4") height. |
| Perennials | | | | | | |
| ATI | 58 | Achlys triphylla | Vanilla Leaf | 10cm pot | 45cm (17") | Well established. |
| AFR | 232 | Aquilegia formosa | Red Columbine | #1 pot | 30 cm (12") | Well established, nursery grown |
| AMT | 498 | Armeria maritima | Sea Pink | #1 pot | 25cm (8") | Well established |
| DFR | 191 | Dicentra formosa | Native Bleeding Heart | #1 pot | 45 cm (18") | Well established, nursery grown |
| DDH | 418 | Dodecatheon hendersonii | Shooting Star | #1 pot | 12cm (5") | 30-40cm (11'-2") height. |
| IVC | 126 | Iris versicolor | Blue Flag Iris | #1 pot | 38 cm (15") | Well established |
| LIB | 163 | Linnaea borealis | Twinflower | #1 pot | 30cm (12") | 10cm (4") height. |
| MAR | 403 | Maianthemum racemosum | False Solomon's Seal | #1 pot | 45cm (18") | Nursery grown, well established |
| PNV | 304 | Prunella vulgaris | Self Heal | 10cm pot | 25cm (10") | 10-50cm (2'-20") height. |
| RBG | 70 | Rudbeckia fulgida 'Goldstrum' | Black-Eyed Susan | #1 pot | 45 cm (18") | Well established |
| TLT | 46 | Tiarrella trifoliata | Foamflower | 10cm pot | 30 (12") | Nursery grown, well established. |
| Ornamental Grasses | | | | | | |
| STB | 17 | Stipa brachytricha | Korean Feather Reed Grass | #1 pot | 60cm (24") | Nursery grown, well established |
| Aquatic Plants | | | | | | |
| CRC | 266 | Carex caryophyllaea "The Beatles" | Spring Sedge | #1 pot | 30cm (12") | Nursery grown, well established. |
| CRM | 167 | Carex muskingumensis | Palm Sedge | #1 pot | 35cm (14") | Nursery grown, well established. |
| COB | 39 | Carex obnupta | Slough Sedge | #1 pot | 60 cm (24") | Well established |
| CRS | 140 | Carex rostrata | Beaked Sedge | #1 pot | 40 cm (16") | Full dense plant for use at Whistler - BC, nursery grown |
| Ferns | | | | | | |
| BSP | 604 | Blechnum spicant | Deer Fern | #1 pot | 38 cm (15") | Well established, nursery grown |
| PMU | 890 | Polystichum munitum | Western Sword Fern | #1 pot | 45 cm (18") | Well established, nursery grown |



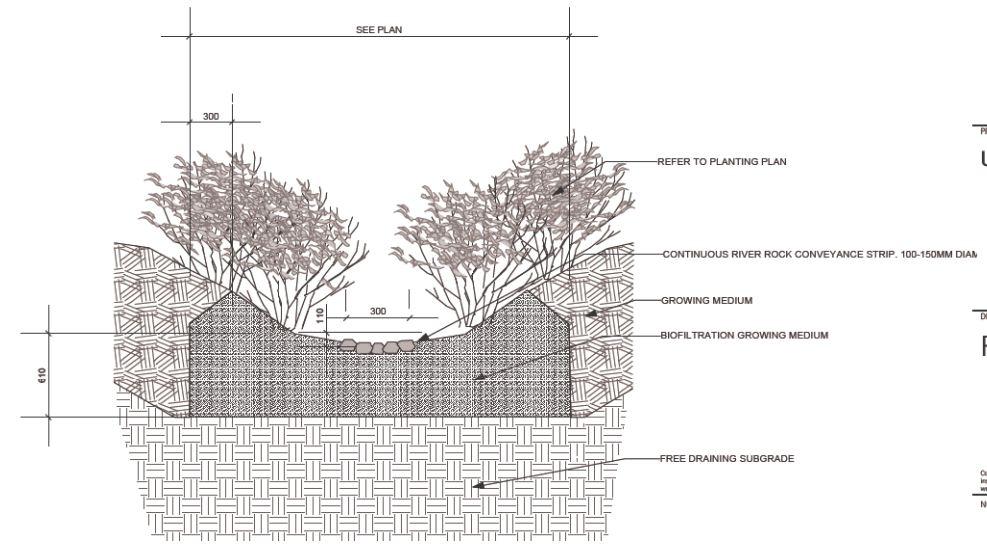
NOTES:

1. TREE TO BE PLANTED WITH ELEVATION OF TOP OF ROOTBALL LEVEL WITH FINISH GRADE ELEVATION.
2. COMPOSTED BARK MULCH TO BE AT 50mm DEPTH KEPT AT LEAST 50mm AWAY FROM BASE OF TREE TRUNK.
3. ONLY PRUNE BROKEN OR DAMAGED BRANCHES USING APPROVED PRUNING TOOLS AND STANDARD I.S.A. PRUNING PRACTICES AS DIRECTED BY CONSULTANT OR PROJECT ARBORIST. SEE SPECIFICATIONS.
4. PLANTING PIT MUST BE FREE DRAINING.
5. ROOT BARRIER TO BE PROVIDED FOR TREES WITHIN 2 METRES OF A PAVED SURFACE. ROOT BARRIER TO BE 600mm DEEP AND EXTEND FOR 2m EACH WAY FROM CENTER OF TREE.



NOTES:

1. SHRUB TO BE PLANTED WITH ELEVATION OF TOP OF ROOTBALL OR POT LEVEL WITH FINISH GRADE ELEVATION.
2. COMPOSTED BARK MULCH AT 50mm DEPTH TO BE KEPT AT LEAST 50mm AWAY FROM STEMS OF SHRUB.
3. PLANTING PIT MUST BE FREE DRAINING.
4. THIS DETAIL DOES NOT REPRESENT A PARTICULAR SPECIES.



NOTES:

1. CONTRACTOR TO COORDINATE WITH LANDSCAPE ARCHITECT ON INSTALLATION OF BIOFILTRATION SWALE.

1 TREE PLANTING
1:10

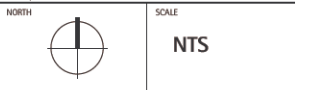
2 SHRUB PLANTING
1:10

3 RAIN GARDEN PLANTING
1:25

PROJECT
UBC Totem Planning

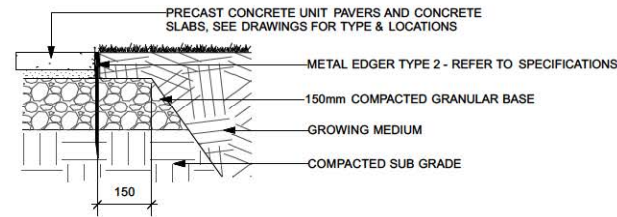
DRAWING TITLE
Plant List

Copyright. All rights reserved. Reproduction in whole or in part is prohibited. This drawing is an instrument of service in the property of the Consultant and may not be used in any way without the written permission of this office.



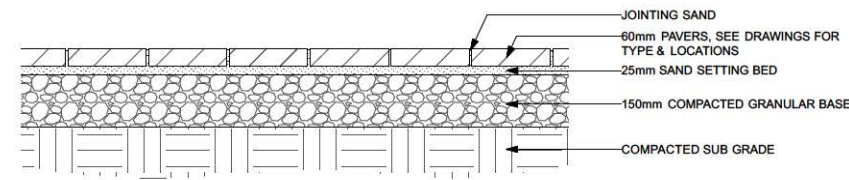
| | |
|-------------|---------------------------|
| PROJECT NO. | 1216 |
| DATE | June 08, 2012 |
| FILE NAME | 1216 TD Planting Plan.vwx |
| PLOTTED | 6/12/12 at 5:07:28 PM |
| DRAWN | JL |
| REVIEWED | JW |

L 4.05

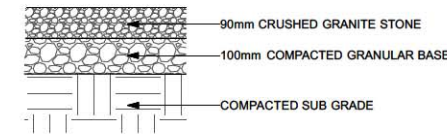


NOTE: USE METAL EDGER ALONG ALL PRECAST UNIT PAVING AND CONCRETE SLABS, EXCEPT WHERE BOUNDED BY CAST IN PLACE CONCRETE PAVING, WALLS, BUILDING OR CURBS.

1 EDGER AT PRECAST CONCRETE UNIT PAVERS/CONCRETE SLABS
1:10

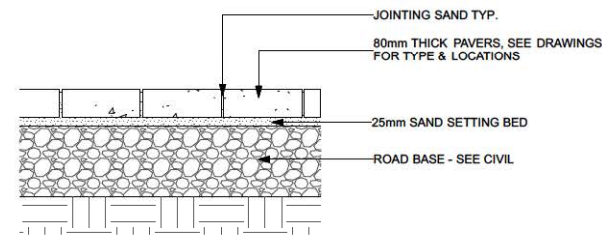


2 PRECAST CONCRETE UNIT PAVERS ON GRADE
1:10

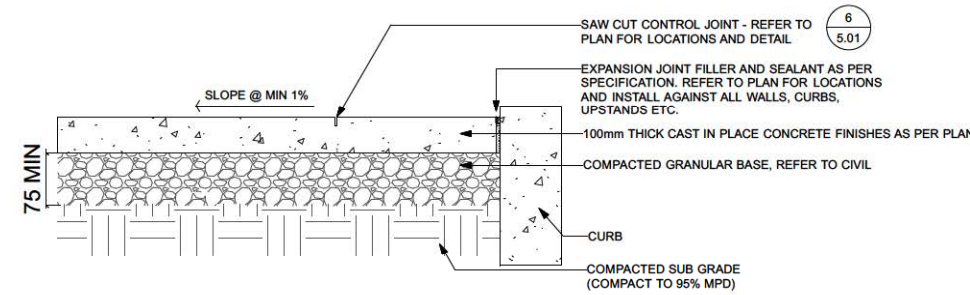


3 CRUSHED GRANITE PAVING ON GRADE
1:10

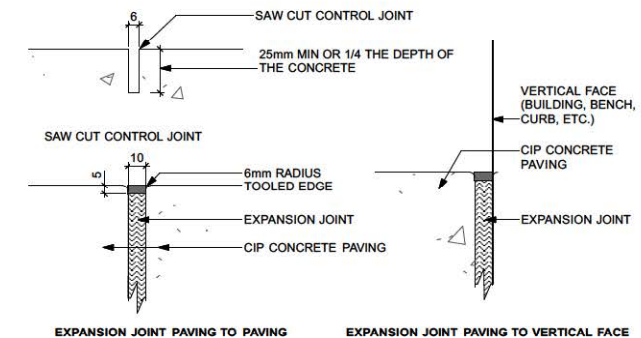
| REVISIONS AND ISSUES | | |
|----------------------|------------|-------------------|
| NO. | DATE | DESCRIPTION |
| 1 | 2012/06/17 | ISSUED TO ORC |
| 2 | 2012/05/31 | ISSUED FOR REVIEW |
| 3 | 2012/06/08 | ISSUED FOR DP |



4 PRECAST CONCRETE UNIT PAVERS ON GRADE - VEHICULAR
1:10

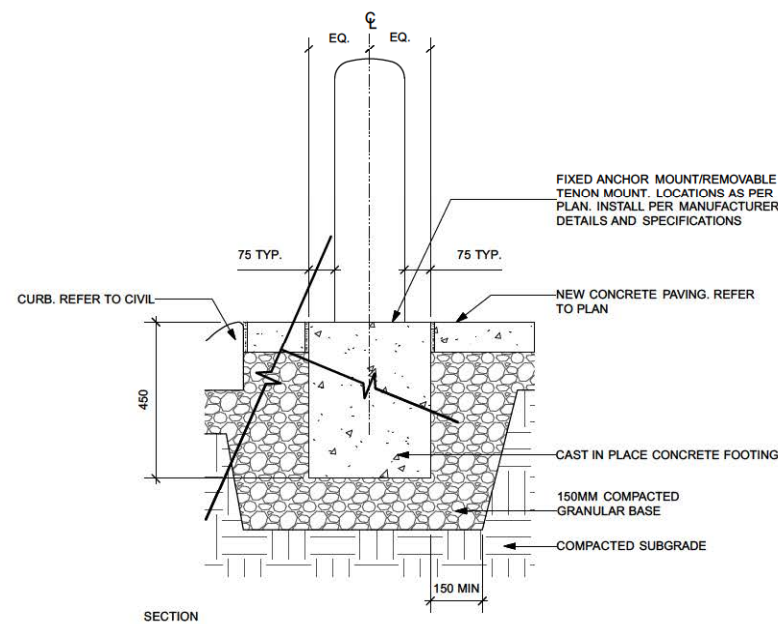


5 CIP CONCRETE SLAB - LIGHT DUTY
1:10

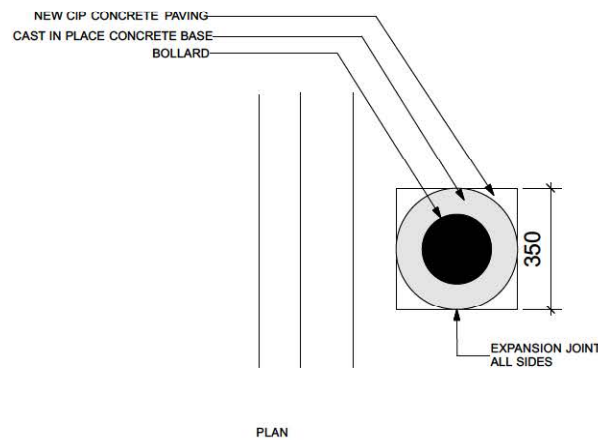


NOTE:
1. EXPANSION JOINT: W.R. MEADOWS ECO-JOINT 9780-458-8773) OR PRE-APPROVED EQUAL

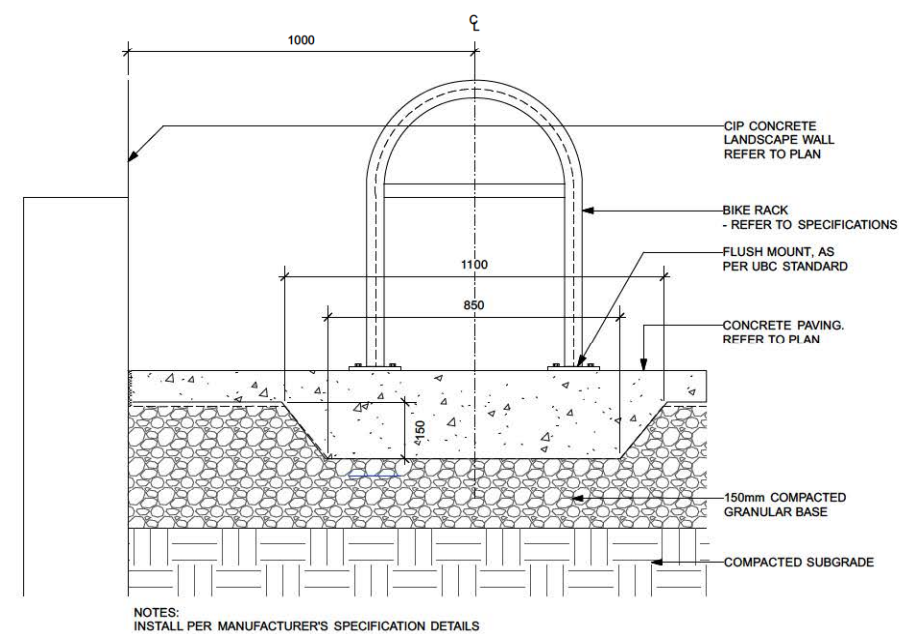
6 SAW CUT AND EXPANSION JOINTS
1:2



7 BOLLARD FOOTING
1:10



8 BICYCLE RACK
1:10



NOTES:
INSTALL PER MANUFACTURER'S SPECIFICATION DETAILS

8 BICYCLE RACK
1:10

PROJECT
**UBC TOTEM MASTER PLAN
 PHASE 1 CONSTRUCTION**

DRAWING TITLE
Details

Copyright. All rights reserved. Reproduction in whole or in part is prohibited. This drawing is an instrument of service to the property of the Contractor and may not be used in any way without the written permission of this office.

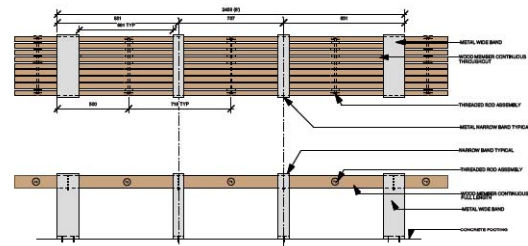
SCALE
AS SHOWN

| | |
|-------------|-----------------------|
| PROJECT NO. | 1216 |
| DATE | MAY 31, 2012 |
| FILE NAME | 1216 TD Details.vwx |
| PLOTTED | 6/8/12 at 11:41:47 AM |
| DRAWN | TH & SM |
| REVIEWED | JW |

DRAWING
L 5.01



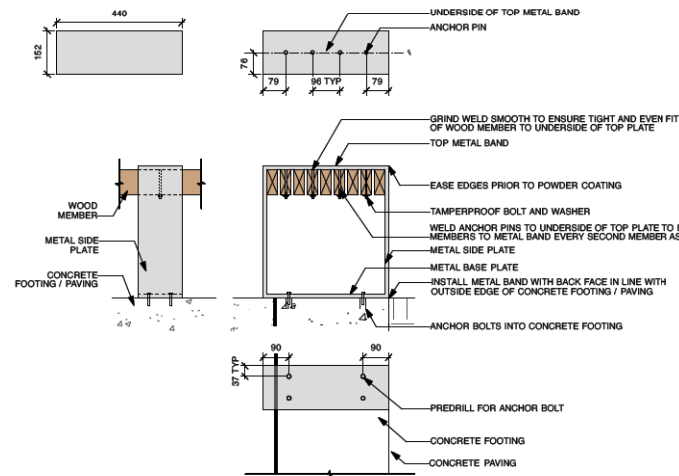
EXISTING BENCH, TOTEM INFILL



1 BENCH TYPE "A"
1:20

NOTES:

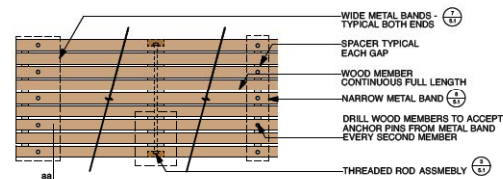
1. CONTRACTOR TO PROVIDE ENGINEER STAMPED SHOP DRAWINGS OF ALL ELEMENTS REQUIRED TO COMPLETE THIS ELEMENT (TABLE, BENCH, FOOTING ETC.)
2. ALL WOOD MEMBERS TO BE 38 X 89mm UNTREATED IPE
3. WOOD PLUGS TO BE IPE
4. USE METAL GALVANIZED SHIMS TO ENSURE TABLE AND BENCHES ARE LEVEL IN ALL DIRECTIONS
5. THREADED STEEL ROD TO BE 13mm (1/2") HOT DIPPED GALVANIZED
6. ALL FASTENERS TO BE HOT DIPPED GALVANIZED TAMPER PROOF
7. METAL BANDS : 12.5mm (1/2") THICK PLATE STEEL
PREDRILL ALL HOLES AND COMPLETE ALL ASSEMBLY PRIOR TO FINISH / POWDER COAT
GRIND ALL WELDS SMOOTH
ALL CORNERS TO BE CLEAN 90 DEGREE ANGLES, EASE OUTSIDE EDGES
FINISH : POWDER COAT USC GREY (RAL 7043)
8. METAL ANCHOR PINS : GALVANIZED TAMPERPROOF
9. METAL ANGLES : 75mm x 50mm x 6mm (3" x 2" x 3/8")
10. METAL VERTICAL SUPPORT : 100mm x 50mm x 6mm (4" x 2" x 1/4")
11. METAL CHANNEL : 200mm x 57mm x 6mm (8" x 2 1/4" x 1/4")
12. METAL VERTICAL SPACER TAB : 10mm (3/8") THICK
13. METAL SPACERS TO BE 10mm (3/8") HOT DIPPED GALVANIZED
14. PREPARE MOCK UPS OF EACH COMPONENT COMPLETE WITH WOOD MEMBERS IN PLACE) FOR REVIEW PRIOR TO FABRICATION OF ALL REMAINING PARTS
15. ALL WELDS NOT IDENTIFIED TO BE GROUND SMOOTH ARE TO BE HIGH QUALITY UNIFORM BEAD. ELEMENTS WITH POOR OR IRREGULAR WELD BEAD MAY BE REJECTED



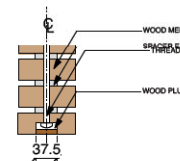
7 TYPICAL WIDE METAL BAND
1:5



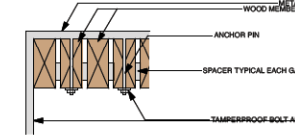
EXISTING BENCH, CIRCA 1970



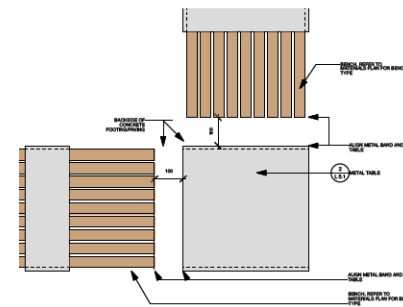
2 WOOD SEATING SLAT ASSEMBLY
1:10



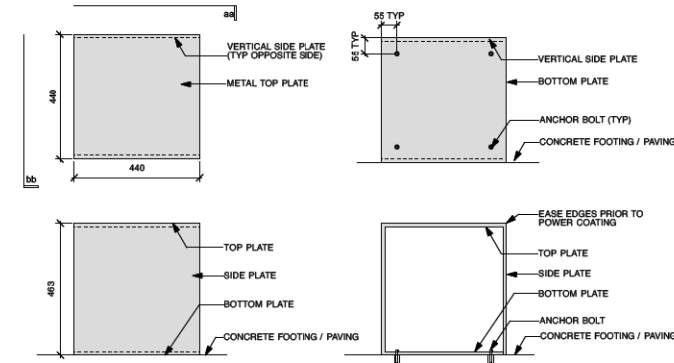
3 THREADED ROD VERTICAL SECTION
1:5



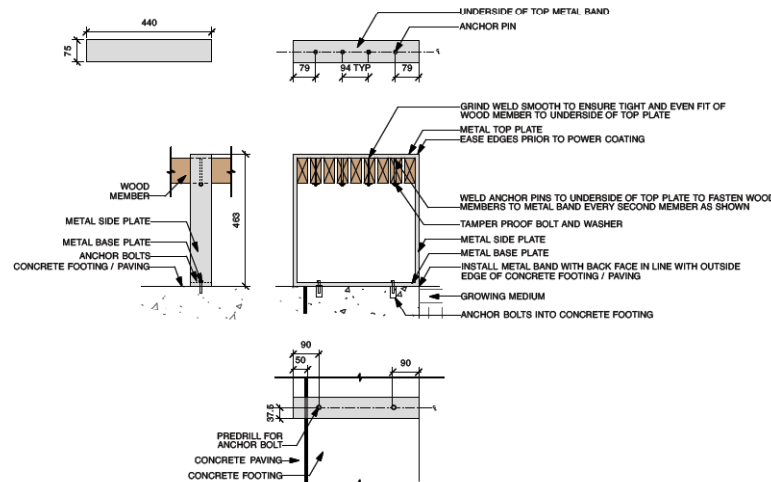
4 SECTION : aa
1:5



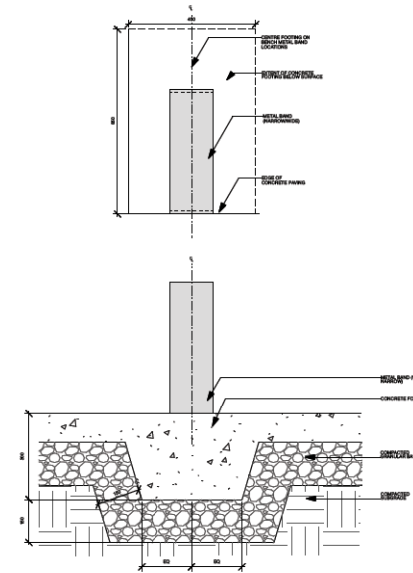
5 ANGLED SEATING LAYOUT WITH METAL TABLE
1:10



6 METAL TABLE
1:10



8 TYPICAL NARROW METAL BAND
1:5



9 CONCRETE FOOTING AT BENCH METAL BANDS
1:10



PWL Partnership Landscape Architects Inc
5th Floor, East Astoria House
1201 West Fraser Street
Vancouver BC Canada V6E 2G2
www.pwlpartnership.com
T 604.686.8111
F 604.686.8112

| REVISIONS AND ISSUES | |
|----------------------|------------------------------|
| NO. | DATE DESCRIPTION |
| 1 | 2012/05/17 ISSUED TO DHC |
| 2 | 2012/05/21 ISSUED FOR REVIEW |
| 3 | 2012/06/08 ISSUED FOR DP |

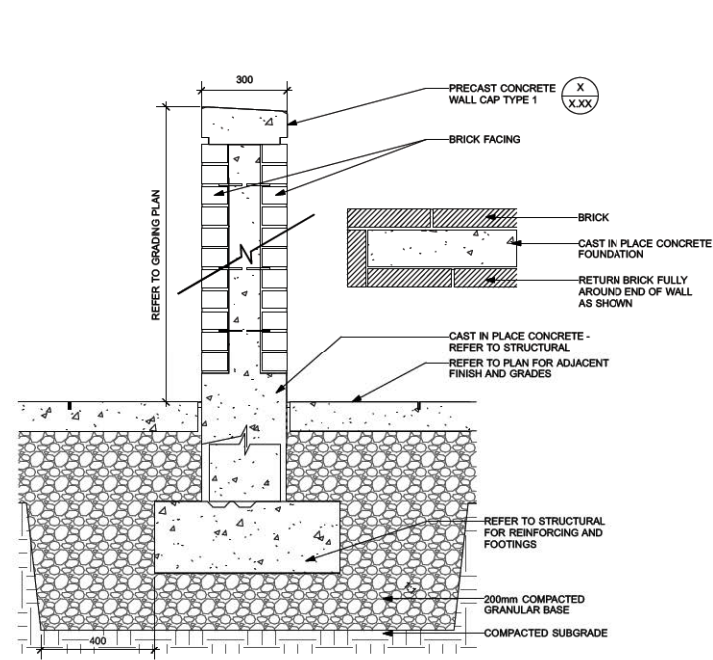
PROJECT
**UBC TOTEM MASTER PLAN
PHASE 1 CONSTRUCTION**

DRAWING TITLE
Details

Copyright. All rights reserved. Reproduction in whole or in part is prohibited. This drawing is the property of PWL Partnership and may not be used in any way without the written permission of PWL Partnership.

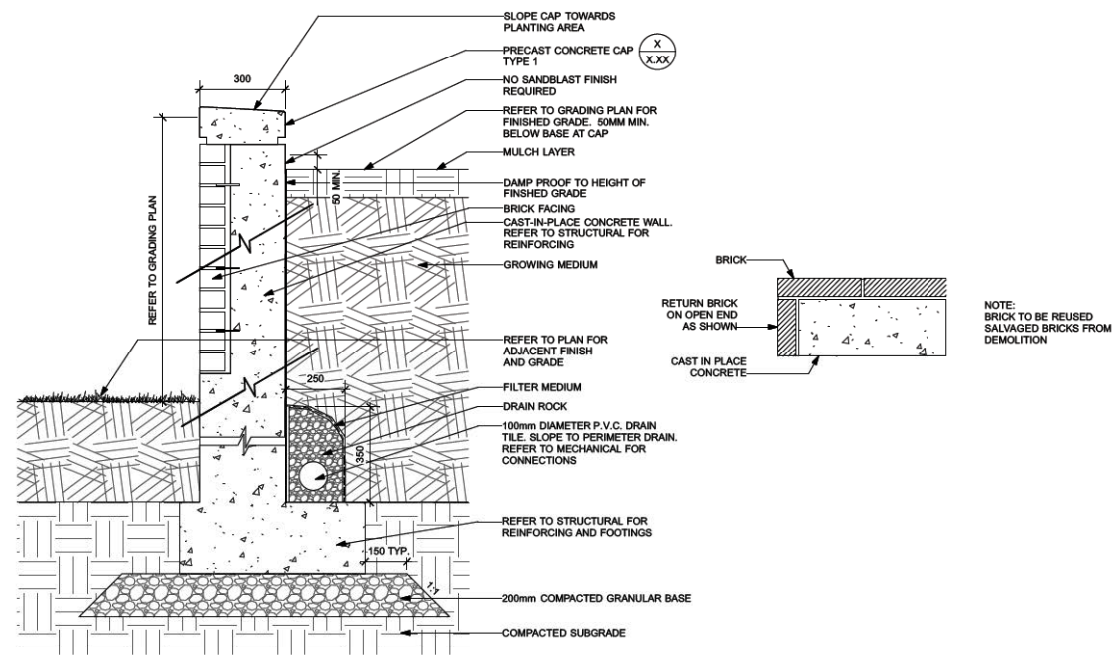
| SCALE | |
|-------------|-----------------------|
| AS SHOWN | |
| PROJECT NO. | 1216 |
| DATE | MAY 31, 2012 |
| FILE NAME | 1216 TD Details.vwx |
| PLOTTED | 6/9/12 at 11:41:47 AM |
| DRAWN | TH & SM |
| REVIEWED | JW |

L 5.02



- NOTES:
1. EXPANSION JOINTS TO BE PROVIDED AT WALL/POUR INTERSECTIONS
 2. SAWCUT CONTROL JOINTS MAXIMUM 2500mm OC SPACING
 3. DAMP PROOFING: AQUASEAL ECOFLEX RUBBAR WATERPROOFING MEMBRANE (1-800-282-3681) OR PREAPPROVED EQUAL
 4. REFER TO STRUCTURAL FOR REINFORCING AND FOOTING DESIGN
 5. REFER TO ARCHITECTURAL FOR BRICK TYPE AND SIZE
 6. REFER TO ARCHITECTURAL AND STRUCTURAL FOR ALL BRICK INSTALLATION DETAILS INCLUDING LAYOUT/PATTERN, DRAINWEEP HOLES, TIE BACKS, ETC.

1 NEW TOTEM PARK FREE STANDING WALL BRICK FACED TWO SIDES
1:10



- NOTES:
1. EXPANSION JOINTS TO BE PROVIDED AT WALL/POUR INTERSECTIONS
 2. SAWCUT CONTROL JOINTS MAXIMUM 2500mm OC SPACING
 3. DAMP PROOFING: AQUASEAL ECOFLEX RUBBAR WATERPROOFING MEMBRANE (1-800-282-3681) OR PREAPPROVED EQUAL
 4. REFER TO STRUCTURAL FOR REINFORCING AND FOOTING DESIGN
 5. REFER TO ARCHITECTURAL FOR BRICK TYPE AND SIZE
 6. REFER TO ARCHITECTURAL AND STRUCTURAL FOR ALL BRICK INSTALLATION DETAILS INCLUDING LAYOUT/PATTERN, DRAINWEEP HOLES, TIE BACKS, ETC.

2 NEW TOTEM PARK RETAINING WALL BRICK FACED ONE SIDE
1:10



3 EXISTING BUILDING SIGNAGE




4 PROPOSED SIGNAGE ON LOW WALL

| NO. | DATE | DESCRIPTION |
|-----|------------|-------------------|
| 1 | 2012/06/17 | ISSUED TO DRC |
| 2 | 2012/06/31 | ISSUED FOR REVIEW |
| 3 | 2012/06/08 | ISSUED FOR DP |

PROJECT
**UBC TOTEM MASTER PLAN
 PHASE 1 CONSTRUCTION**

DRAWING TITLE
Details

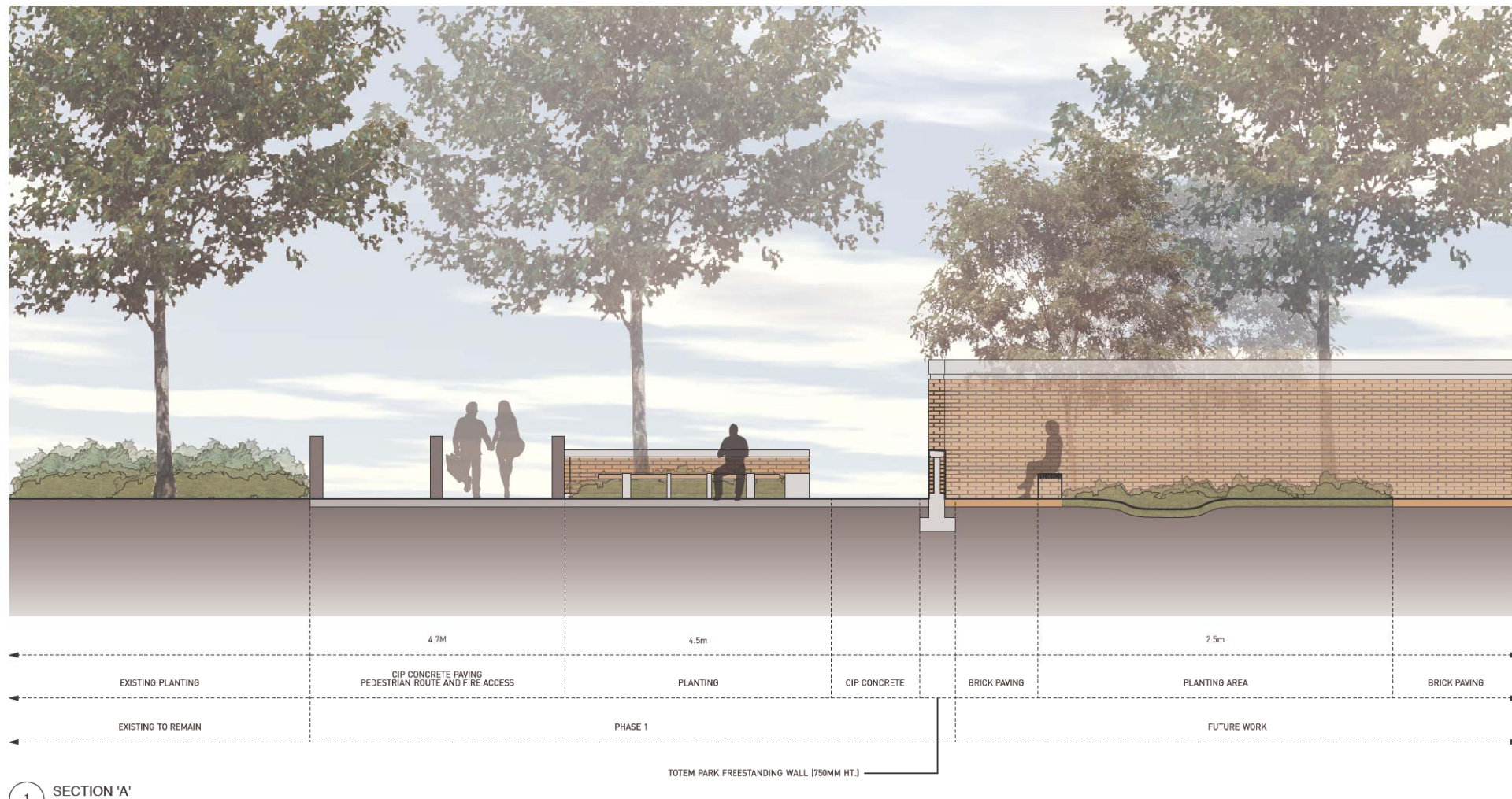
Copyright, All Rights reserved. Reproduction in whole or in part is prohibited. This drawing is the intellectual property of the property of the Consultant and may not be used in any way without the written permission of the office.
 NORTH  SCALE
AS SHOWN

| | |
|-------------|-----------------------|
| PROJECT NO. | 1216 |
| DATE | MAY 31, 2012 |
| FILE NAME | 1216 TD Details.vwx |
| PLOTTED | 6/8/12 at 11:41:47 AM |
| DRAWN | TH & SM |
| REVIEWED | JW |

L 5.03

REVISIONS AND ISSUES

| NO. | DATE | DESCRIPTION |
|-----|------------|-------------------|
| 1 | 2012/05/31 | ISSUED FOR REVIEW |
| 2 | 2012/06/08 | ISSUED FOR DP |



PROJECT
UBC Totem Planning

DRAWING TITLE
Landscape Sections

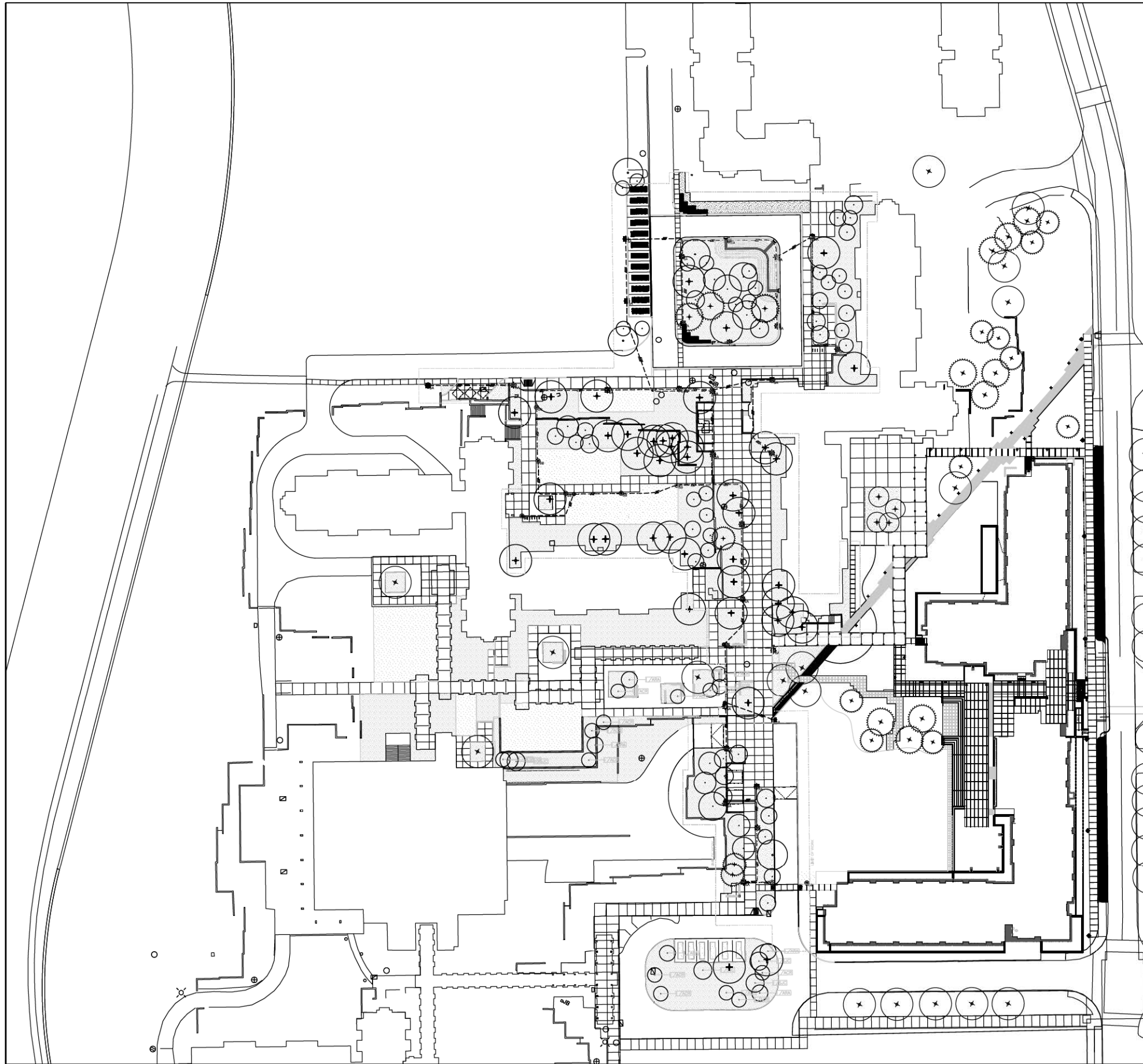
Copyright: All rights reserved. Reproduction in whole or in part is prohibited. This drawing is an indication of intent and is the property of the Consultant and may not be used in any way without the written permission of this office.

SCALE
As Shown





| | |
|-------------|-----------------------|
| PROJECT NO. | 1216 |
| DATE | June 08, 2012 |
| FILE NAME | 1216 TD Sections.vwx |
| PLOTTED | 6/12/12 at 5:44:51 PM |
| DRAWN | KF |
| REVIEWED | JW |

L 6.01

COPYRIGHT RESERVED
 This drawing is the property of Phillips Freese Stollberg and cannot be used or reproduced without written consent. Contractors shall verify and be responsible for all dimensions and conditions on the job. This office shall be informed of any discrepancies from the dimensions and conditions shown on the drawing.



ELECTRICAL LEGEND:

-  SA
 UBC STANDARD LIGHT POLE (SELUX SATURN 2 CUTOFF)
 35W T8 METAL HALIDE I.E.S TYPE V DISTRIBUTION
-  SB
 UBC STANDARD LIGHT POLE (ECRO.PANORAMA 3335.03)
 CW 70W T8 METAL HALIDE I.E.S TYPE V DISTRIBUTION
- 
 PROPOSED 3 No. 6 RW90 ST. LT.G. &
 No. 8 RW90 BOND INSIDE 1-32mm RPVC
- 
 PROPOSED SMALL ROUND JUNCTION BOX
 WITH PAINTED BLACK STEEL LID
 NOVA POLE OR WESTCOASTVALMOUNT

CONSULTANT



KEY PLAN



REVISIONS

| NO. | DATE | DESCRIPTION | BY |
|-----|--------------|-------------------|----|
| 1 | MAY 11, 2012 | ISSUED FOR TENDER | - |

PROJECT

UBC TOTEM PARK
 University of British Columbia

DRAWING TITLE

STREET LIGHTING

| | | | |
|------------|-----------|-------------|---------|
| DATE | JUN. 2012 | PROJECT NO. | PJ12-48 |
| SCALE | 1/200 | DRAWING NO. | |
| DRAWN BY | KN | | |
| CHECKED BY | | | |

