

**ROGERS™**

**SITE NAME: UBC STUDENT UNION BUILDING**

**SITE ID: W3285**

**LOCATION: 6138 STUDENT UNION BLVD  
VANCOUVER, BC**

BUILDING INFORMATION OBTAINED  
FROM DRAWINGS PREPARED BY  
DIALOG, DATED MAY 07/2012

**SITE TYPE: ROOFTOP**

**DRAWING LIST:**  
S101 TITLE PAGE  
S301 ROOF PLAN  
S302 MECHANICAL PENTHOUSE PLAN  
S303 FIRST FLOOR PLAN  
S304 EQUIPMENT ROOM LAYOUT  
S401 NORTH ELEVATION  
S402 EAST ELEVATION  
S403 SOUTH ELEVATION  
S404 WEST ELEVATION  
S601 PLAN AT SECTORS 1 AND 2  
S602 SECTION THRU MOUNTS  
S603 INTERIOR BRACE ELEVATIONS

	2013.06.21	ISSUED FOR COORDINATION
	2013.05.02	ISSUED FOR CLIENT REVIEW
	2012.12.05	ISSUED FOR CLIENT REVIEW
No.:	Date:	Description:
Revisions:		
Date:	DEC 2012	Drawing:  <b>S101</b>
Scale:	NA	
Drawn:	GH	
Checked:	GF	
Project:	212336	Of

Copyright Reserved.  
This plan and design are, and at all times remain the exclusive property of GS Sayers Engineering Ltd. and cannot be used or reproduced without written consent. Written dimensions shall have precedence over scaled dimensions. Contractors shall verify and be responsible for all dimensions and conditions on the job and this office shall be informed of any variations from the dimensions and conditions shown on the drawings.  
Sketches may be issued which augment or alter the information presented on this drawing. It is the responsibility of parties using this drawing to ensure that they are in possession of all such sketches.



**GS Sayers**  
ENGINEERING LTD.

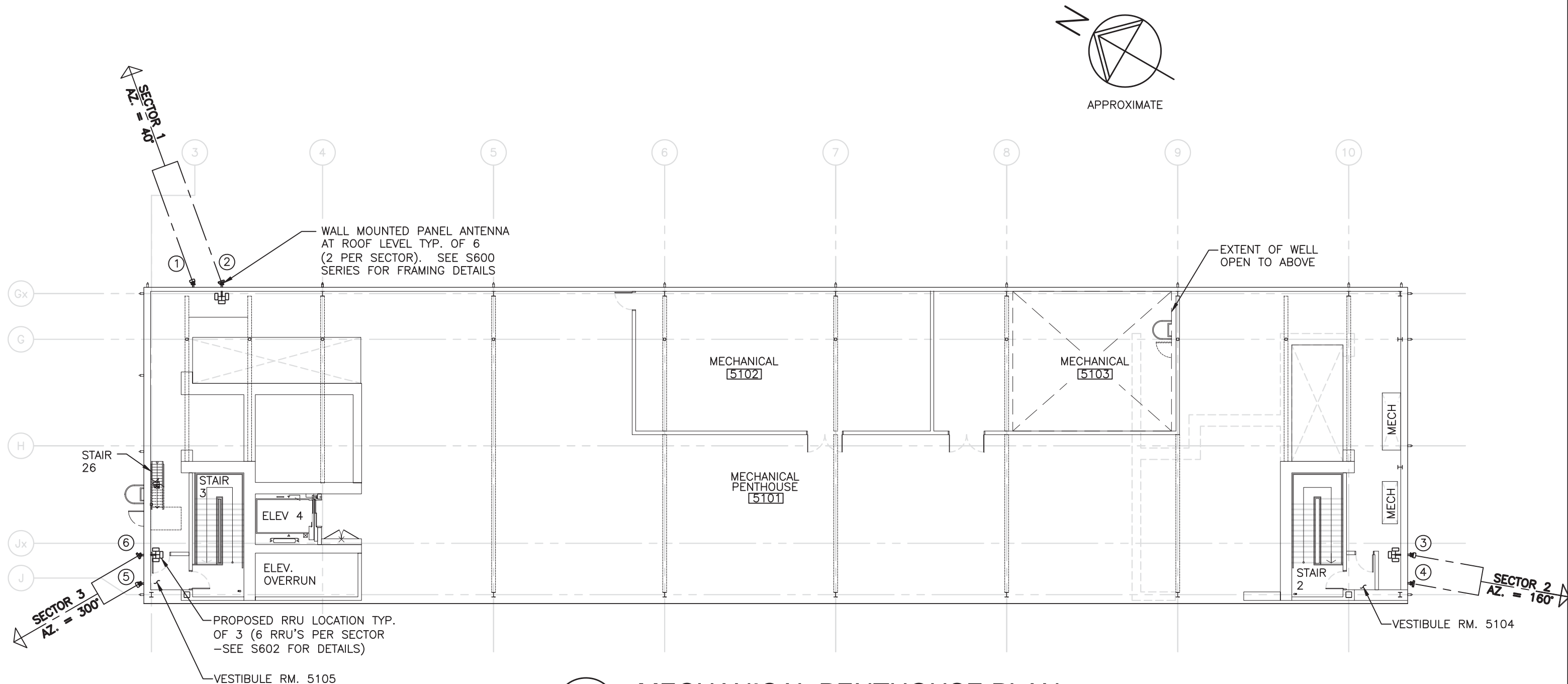
1661 West 5<sup>th</sup> Avenue  
Vancouver, BC V6J 1N5  
T: 604.734.8822  
F: 604.734.8842  
www.glotmansimpson.com

Project: Site ID: **W3285**  
**UBC STUDENT UNION BUILDING**  
6138 STUDENT UNION BLVD, VANCOUVER, BC



Sheet Title:  
**TITLE PAGE**





1  
-

## MECHANICAL PENTHOUSE PLAN

1:200

	2013.06.21	ISSUED FOR COORDINATION
	2013.05.02	ISSUED FOR CLIENT REVIEW
	2012.12.05	ISSUED FOR CLIENT REVIEW
No.:	Date:	Description:
Revisions:		
Date:	DEC 2012	Drawing:
Scale:	1:200	<b>S302</b>
Drawn:	GH	
Checked:	GF	
Project:	212336	Of

Copyright Reserved.  
This plan and design are, and at all times remain the exclusive property of GS Sayers Engineering Ltd. and cannot be used or reproduced without written consent. Written dimensions shall have precedence over scaled dimensions. Contractors shall verify and be responsible for all dimensions and conditions on the job and this office shall be informed of any variations from the dimensions and conditions shown on the drawings.  
Sketches may be issued which augment or alter the information presented on this drawing. It is the responsibility of parties using this drawing to ensure that they are in possession of all such sketches.



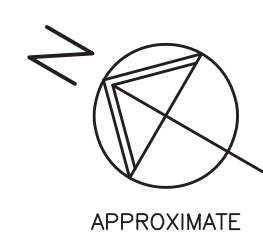
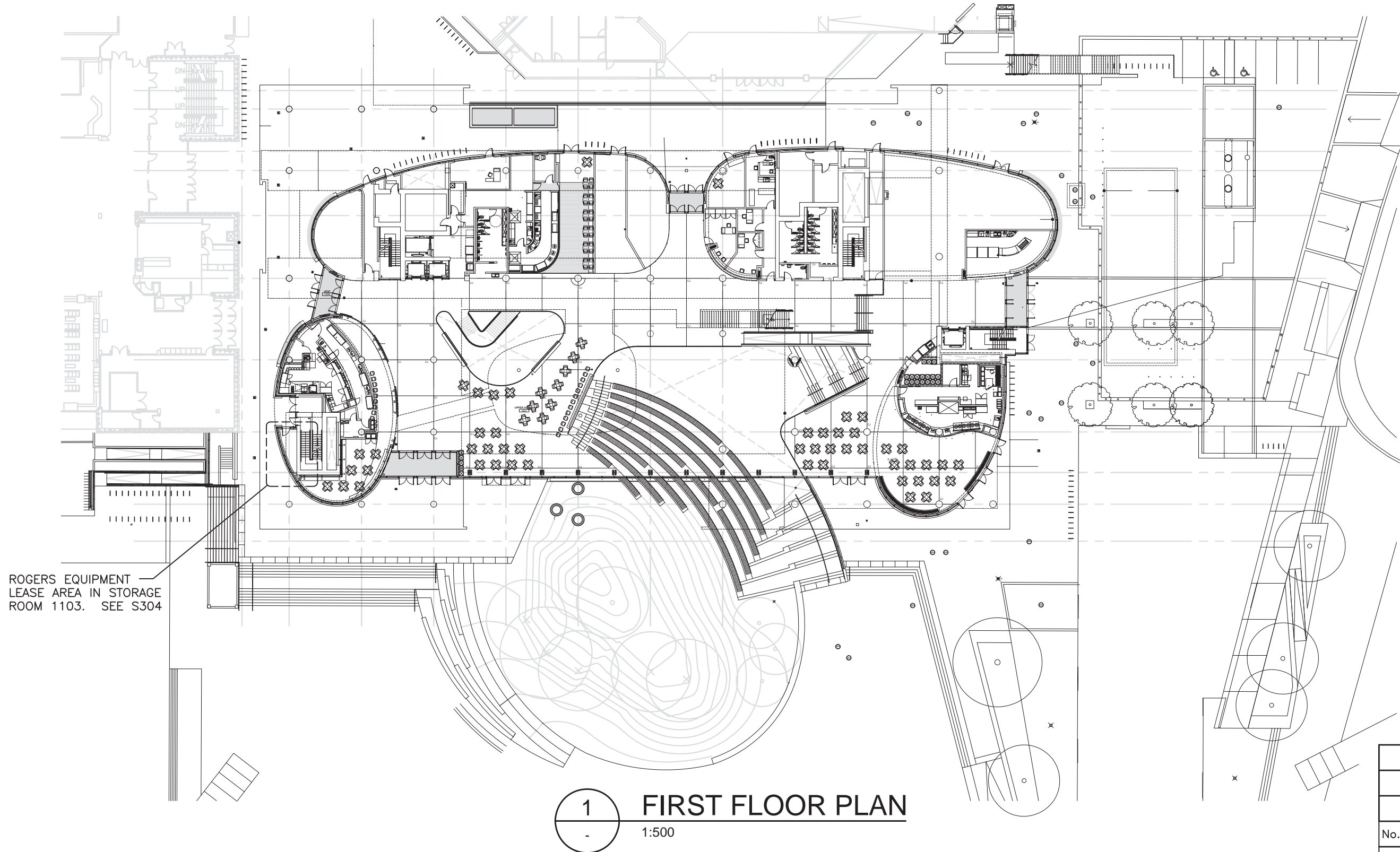
**GS·Sayers**  
ENGINEERING LTD.

1661 West 5<sup>th</sup> Avenue  
Vancouver, BC V6J 1N5  
T: 604.734.8822  
F: 604.734.8842  
www.glotmansimpson.com

Project: Site ID: **W3285**  
**UBC STUDENT UNION BUILDING**  
6138 STUDENT UNION BLVD, VANCOUVER, BC



Sheet Title:  
**MECHANICAL  
PENTHOUSE PLAN**



1 FIRST FLOOR PLAN  
- 1:500

	2013.06.21	ISSUED FOR COORDINATION
	2013.05.02	ISSUED FOR CLIENT REVIEW
	2012.12.05	ISSUED FOR CLIENT REVIEW
No.:	Date:	Description:
Revisions:		
Date:	DEC 2012	Drawing:
Scale:	1:500	S303
Drawn:	GH	
Checked:	GF	
Project:	212336	Of


Copyright Reserved.  
This plan and design are, and at all times remain the exclusive property of GS Sayers Engineering Ltd. and cannot be used or reproduced without written consent. Written dimensions shall have precedence over scaled dimensions. Contractors shall verify and be responsible for all dimensions and conditions on the job and this office shall be informed of any variations from the dimensions and conditions shown on the drawings.  
Sketches may be issued which augment or alter the information presented on this drawing. It is the responsibility of parties using this drawing to ensure that they are in possession of all such sketches.



**GS·Sayers**  
ENGINEERING LTD.  
  
1661 West 5<sup>th</sup> Avenue  
Vancouver, BC V6J 1N5  
T: 604.734.8822  
F: 604.734.8842  
www.glotmansimpson.com

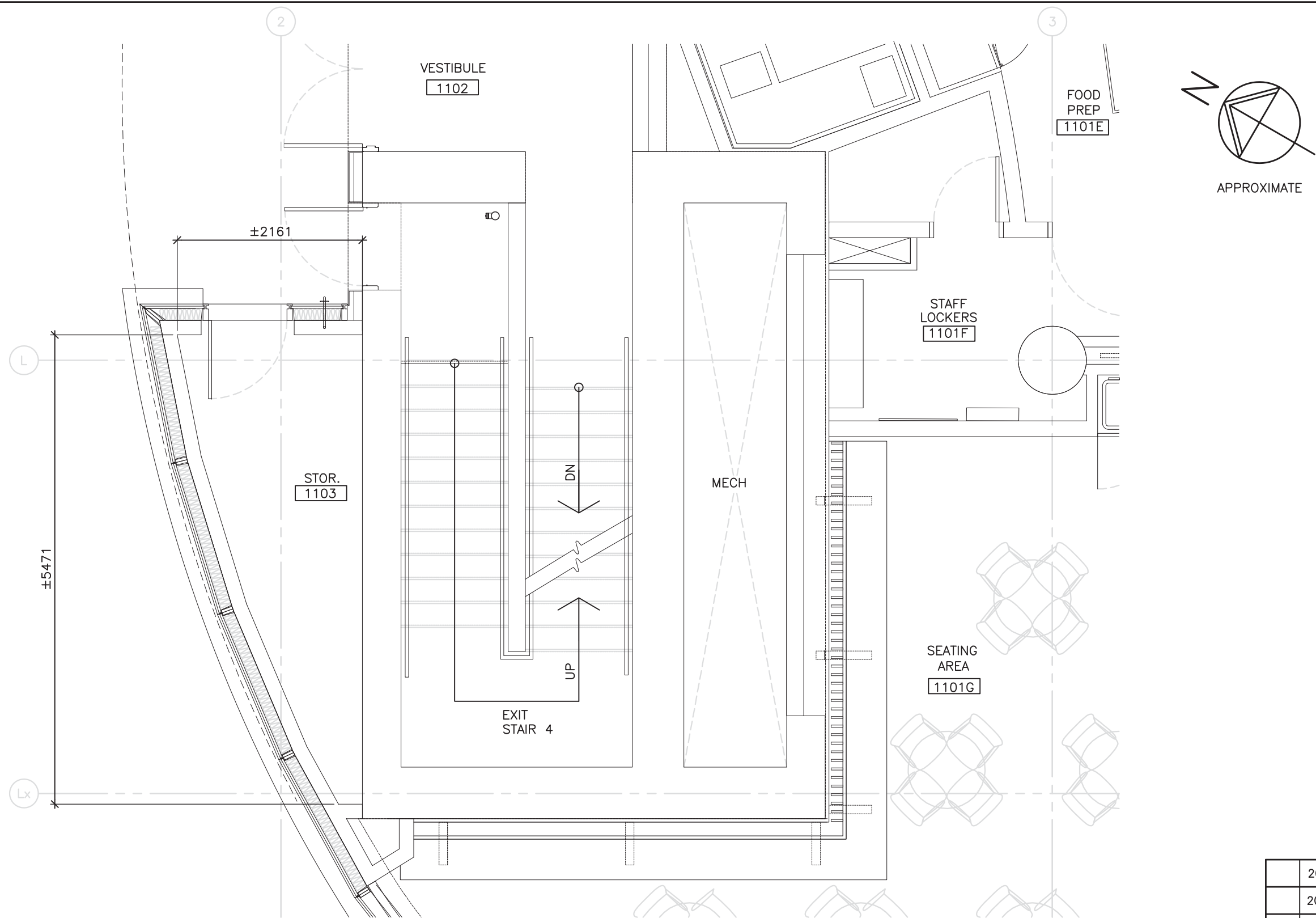
Project: Site ID: **W3285**

**UBC STUDENT UNION BUILDING**  
6138 STUDENT UNION BLVD, VANCOUVER, BC

 **ROGERS™**

Sheet Title:  
**FIRST FLOOR PLAN**





**1**  
S303

**EQUIPMENT ROOM LAYOUT**  
1:50 (STORAGE ROOM 1103)

	2013.06.21	ISSUED FOR COORDINATION
	2013.05.02	ISSUED FOR CLIENT REVIEW
	2012.12.05	ISSUED FOR CLIENT REVIEW
No.:	Date:	Description:
Revisions:		
Date:	DEC 2012	Drawing:
Scale:	1:50	<b>S304</b>
Drawn:	GH	
Checked:	GF	
Project:	212336	Of

Copyright Reserved.  
This plan and design are, and at all times remain the exclusive property of GS Sayers Engineering Ltd. and cannot be used or reproduced without written consent. Written dimensions shall have precedence over scaled dimensions. Contractors shall verify and be responsible for all dimensions and conditions on the job and this office shall be informed of any variations from the dimensions and conditions shown on the drawings.  
Sketches may be issued which augment or alter the information presented on this drawing. It is the responsibility of parties using this drawing to ensure that they are in possession of all such sketches.



**GS·Sayers**  
ENGINEERING LTD.

1661 West 5<sup>th</sup> Avenue  
Vancouver, BC V6J 1N5  
T: 604.734.8822  
F: 604.734.8842  
www.glotmansimpson.com

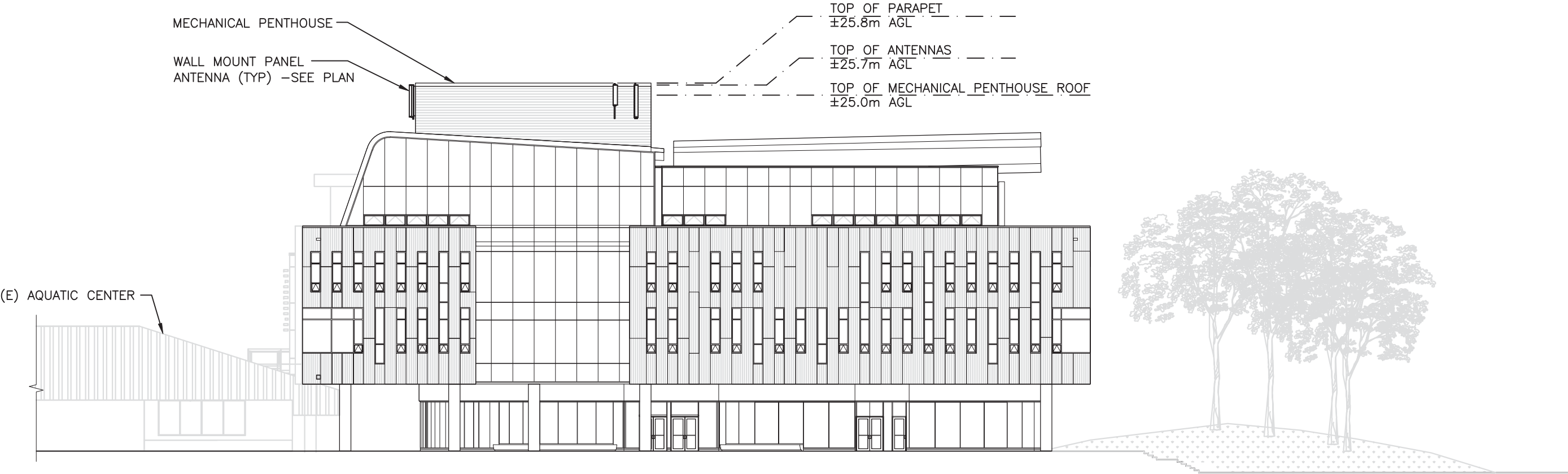
Project: Site ID: **W3285**  
**UBC STUDENT UNION BUILDING**  
6138 STUDENT UNION BLVD, VANCOUVER, BC



Sheet Title:  
**EQUIPMENT ROOM LAYOUT**

NOTES:

1. ANTENNAS AND MOUNTING HARDWARE TO BE PAINTED TO MATCH BUILDING.



1 NORTH ELEVATION  
S301 1:300

	2013.06.21	ISSUED FOR COORDINATION
	2013.05.02	ISSUED FOR CLIENT REVIEW
	2012.12.05	ISSUED FOR CLIENT REVIEW
No.:	Date:	Description:
Revisions:		
Date:	DEC 2012	Drawing:
Scale:	1:300	S401
Drawn:	GH	
Checked:	GF	
Project:	212336	Of

Copyright Reserved.

This plan and design are, and at all times remain the exclusive property of GS Sayers Engineering Ltd. and cannot be used or reproduced without written consent. Written dimensions shall have precedence over scaled dimensions. Contractors shall verify and be responsible for all dimensions and conditions on the job and this office shall be informed of any variations from the dimensions and conditions shown on the drawings.

Sketches may be issued which augment or alter the information presented on this drawing. It is the responsibility of parties using this drawing to ensure that they are in possession of all such sketches.



**GS·Sayers**  
ENGINEERING LTD.

1661 West 5<sup>th</sup> Avenue  
Vancouver, BC V6J 1N5  
T: 604.734.8822  
F: 604.734.8842  
www.glotmansimpson.com

Project: Site ID: **W3285**

**UBC STUDENT UNION BUILDING**  
6138 STUDENT UNION BLVD, VANCOUVER, BC



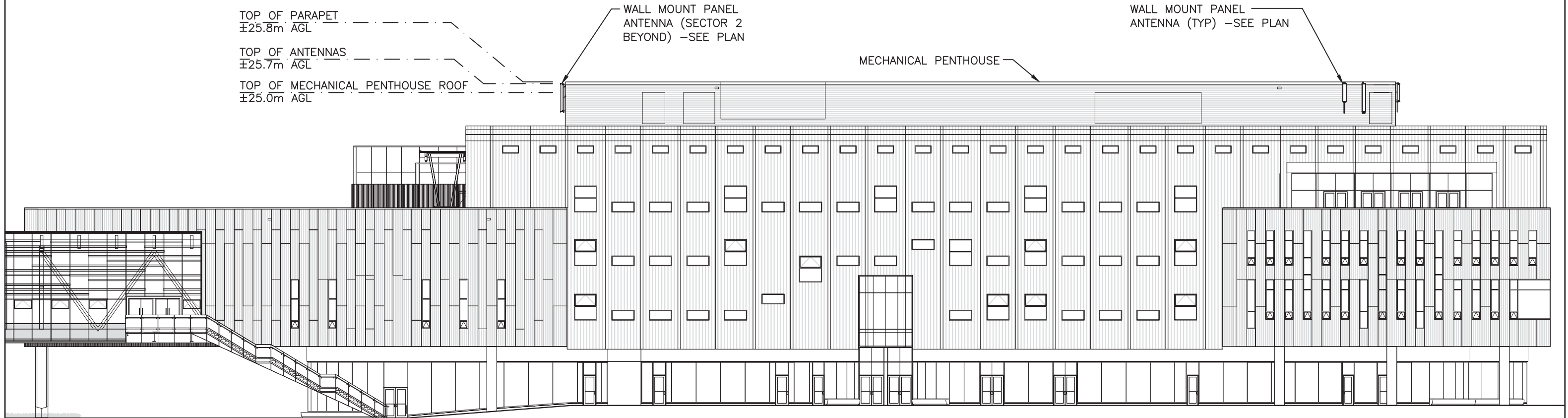
Sheet Title:

**NORTH ELEVATION**

Date:	DEC 2012	Drawing:
Scale:	1:300	S401
Drawn:	GH	
Checked:	GF	
Project:	212336	Of

NOTES:

1. ANTENNAS AND MOUNTING HARDWARE TO BE PAINTED TO MATCH BUILDING.



1 EAST ELEVATION  
S301 1:300

	2013.06.21	ISSUED FOR COORDINATION
	2013.05.02	ISSUED FOR CLIENT REVIEW
	2012.12.05	ISSUED FOR CLIENT REVIEW
No.:	Date:	Description:
Revisions:		
Date:	DEC 2012	Drawing:
Scale:	1:300	S402
Drawn:	GH	
Checked:	GF	
Project:	212336	Of

Copyright Reserved.  
This plan and design are, and at all times remain the exclusive property of GS Sayers Engineering Ltd. and cannot be used or reproduced without written consent. Written dimensions shall have precedence over scaled dimensions. Contractors shall verify and be responsible for all dimensions and conditions on the job and this office shall be informed of any variations from the dimensions and conditions shown on the drawings.  
Sketches may be issued which augment or alter the information presented on this drawing. It is the responsibility of parties using this drawing to ensure that they are in possession of all such sketches.



GS Sayers  
ENGINEERING LTD.

1661 West 5<sup>th</sup> Avenue  
Vancouver, BC V6J 1N5  
T: 604.734.8822  
F: 604.734.8842  
www.glotmansimpson.com

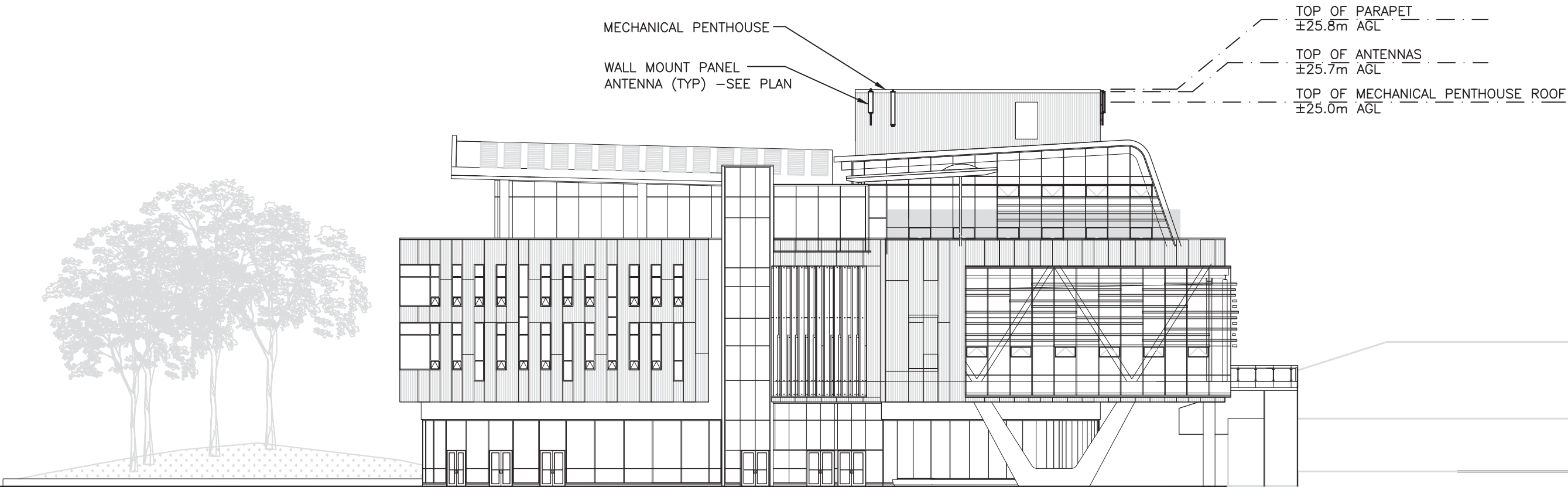
Project: Site ID: **W3285**  
**UBC STUDENT UNION BUILDING**  
6138 STUDENT UNION BLVD, VANCOUVER, BC



Sheet Title:  
**EAST ELEVATION**

NOTES:

1. ANTENNAS AND MOUNTING HARDWARE TO BE PAINTED TO MATCH BUILDING.



1  
S301

SOUTH ELEVATION

1:300

	2013.06.21	ISSUED FOR COORDINATION
	2013.05.02	ISSUED FOR CLIENT REVIEW
	2012.12.05	ISSUED FOR CLIENT REVIEW
No.:	Date:	Description:
Revisions:		
Date:	DEC 2012	Drawing:
Scale:	1:300	S403
Drawn:	GH	
Checked:	GF	
Project:	212336	Of

Copyright Reserved.  
This plan and design are, and at all times remain the exclusive property of GS Sayers Engineering Ltd. and cannot be used or reproduced without written consent. Written dimensions shall have precedence over scaled dimensions. Contractors shall verify and be responsible for all dimensions and conditions on the job and this office shall be informed of any variations from the dimensions and conditions shown on the drawings.  
Sketches may be issued which augment or alter the information presented on this drawing. It is the responsibility of parties using this drawing to ensure that they are in possession of all such sketches.



**GS·Sayers**  
ENGINEERING LTD.

1661 West 5<sup>th</sup> Avenue  
Vancouver, BC V6J 1N5  
T: 604.734.8822  
F: 604.734.8842  
www.glotmansimpson.com

Project: Site ID: **W3285**  
**UBC STUDENT UNION BUILDING**  
6138 STUDENT UNION BLVD, VANCOUVER, BC

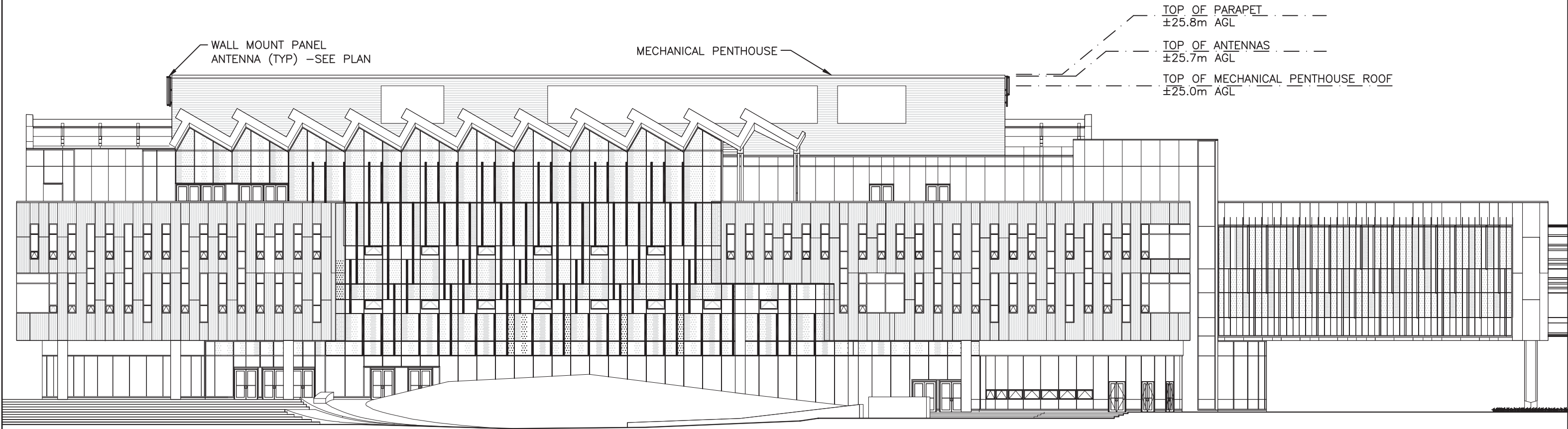


Sheet Title:  
**SOUTH ELEVATION**



NOTES:

1. ANTENNAS AND MOUNTING HARDWARE TO BE PAINTED TO MATCH BUILDING.



1 WEST ELEVATION  
S301 1:300

	2013.06.21	ISSUED FOR COORDINATION
	2013.05.02	ISSUED FOR CLIENT REVIEW
	2012.12.05	ISSUED FOR CLIENT REVIEW
No.:	Date:	Description:
Revisions:		
Date:	DEC 2012	Drawing:
Scale:	1:300	S404
Drawn:	GH	
Checked:	GF	
Project:	212336	Of

Copyright Reserved.  
This plan and design are, and at all times remain the exclusive property of GS Sayers Engineering Ltd. and cannot be used or reproduced without written consent. Written dimensions shall have precedence over scaled dimensions. Contractors shall verify and be responsible for all dimensions and conditions on the job and this office shall be informed of any variations from the dimensions and conditions shown on the drawings.  
Sketches may be issued which augment or alter the information presented on this drawing. It is the responsibility of parties using this drawing to ensure that they are in possession of all such sketches.



GS Sayers  
ENGINEERING LTD.

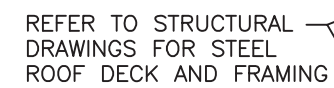
1661 West 5<sup>th</sup> Avenue  
Vancouver, BC V6J 1N5  
T: 604.734.8822  
F: 604.734.8842  
www.glotmansimpson.com

Project: Site ID: **W3285**  
**UBC STUDENT UNION BUILDING**  
6138 STUDENT UNION BLVD, VANCOUVER, BC



Sheet Title:  
**WEST ELEVATION**

X-BR - L51x51x6.4 CROSS BRACE  
BR1 - L102x102x6.4 DIAG. BRACE



	2013.06.21	ISSUED FOR COORDINATION
	2013.05.02	ISSUED FOR CLIENT REVIEW
No.:	Date:	Description:
Revisions:		
Date:	MAY 2013	Drawing:  <div style="font-size: 48pt; font-weight: bold; text-align: center;">S601</div>
Scale:	1:50	
Drawn:	SR	
Checked:	GF	
Project:	212336	
		Of

Copyright Reserved.

This plan and design are, and at all times remain the exclusive property of GS Sayers Engineering Ltd. and cannot be used or reproduced without written consent. Written dimensions shall have precedence over scaled dimensions. Contractors shall verify and be responsible for all dimensions and conditions on the job and the office shall be informed of any variations from the dimensions and conditions shown on the drawings.

Sketches may be issued which augment or alter the information presented on this drawing. It is the responsibility of parties using this drawing to ensure that they are in possession of all such sketches.



**GS·Sayers**  
ENGINEERING LTD.

1661 West 5<sup>th</sup> Avenue  
Vancouver, BC V6J 1N5  
T: 604.734.8822  
F: 604.734.8842  
[www.glotmansimpson.com](http://www.glotmansimpson.com)

Project: Site ID: **W3285**  
**UBC STUDENT UNION BUILDING**  
 6138 STUDENT UNION BLVD, VANCOUVER, BC

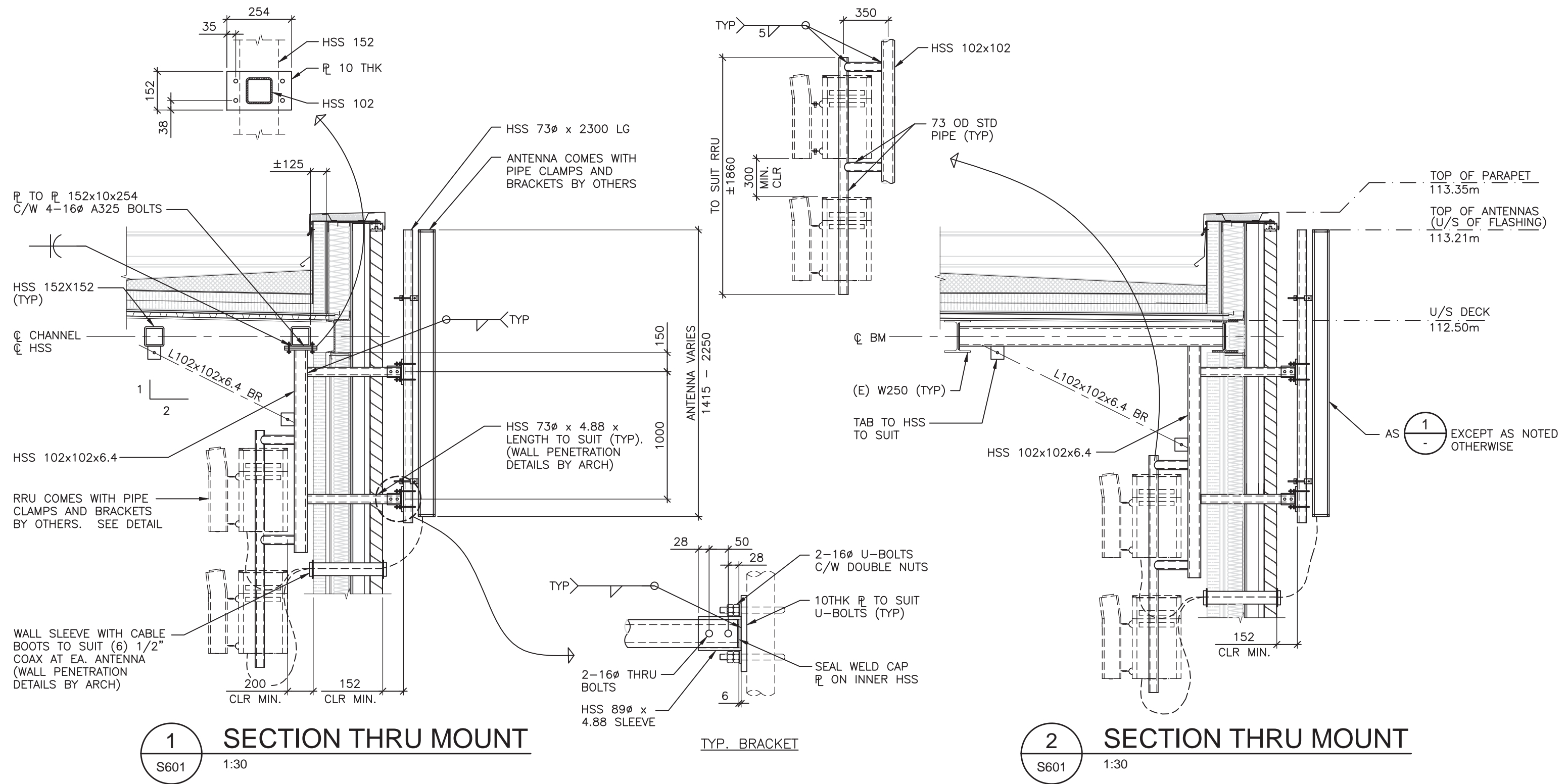


Sheet Title:

**PLAN AT SECTORS  
1 AND 2**

Drawing:

**S601**



**NOTE:**  
BRACKETS **MUST** BE INSTALLED **BEFORE** EXTERIOR DRYWALL, EXTERIOR INSULATION AND METAL LOUVRE. PENETRATION THRU DRYWALL TO BE MEMBRANED. SEE ARCH. DRAWINGS

Copyright Reserved.  
This plan and design are, and at all times remain the exclusive property of GS Sayers Engineering Ltd. and cannot be used or reproduced without written consent. Written dimensions shall have precedence over scaled dimensions. Contractors shall verify and be responsible for all dimensions and conditions on the job and this office shall be informed of any variations from the dimensions and conditions shown on the drawings.  
Sketches may be issued which augment or alter the information presented on this drawing. It is the responsibility of parties using this drawing to ensure that they are in possession of all such sketches.



**GS Sayers**  
ENGINEERING LTD.

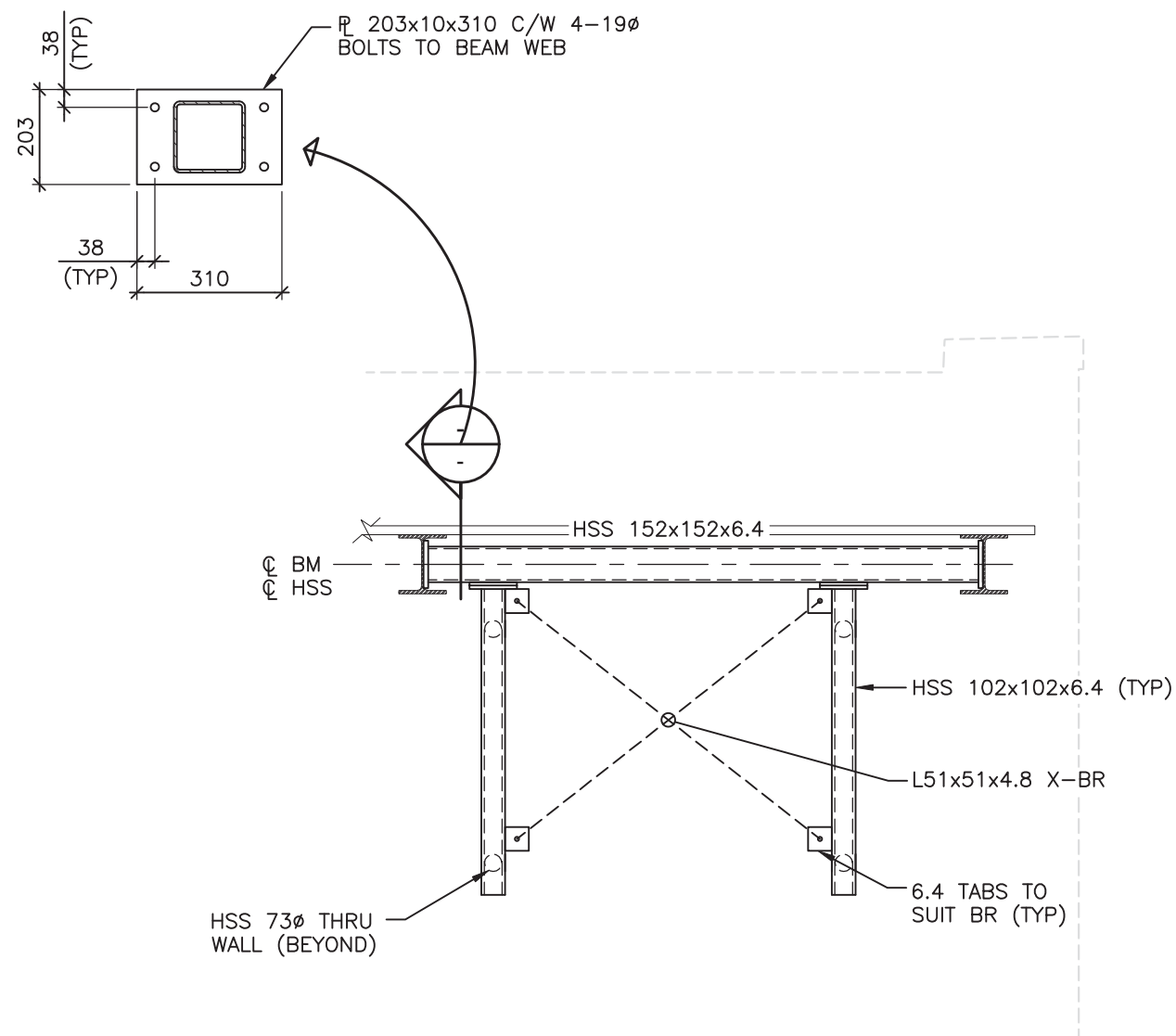
1661 West 5<sup>th</sup> Avenue  
Vancouver, BC V6J 1N5  
T: 604.734.8822  
F: 604.734.8842  
www.glotmansimpson.com

Project: Site ID: **W3285**  
**UBC STUDENT UNION BUILDING**  
6138 STUDENT UNION BLVD, VANCOUVER, BC



Sheet Title:  
**SECTION THRU MOUNTS**

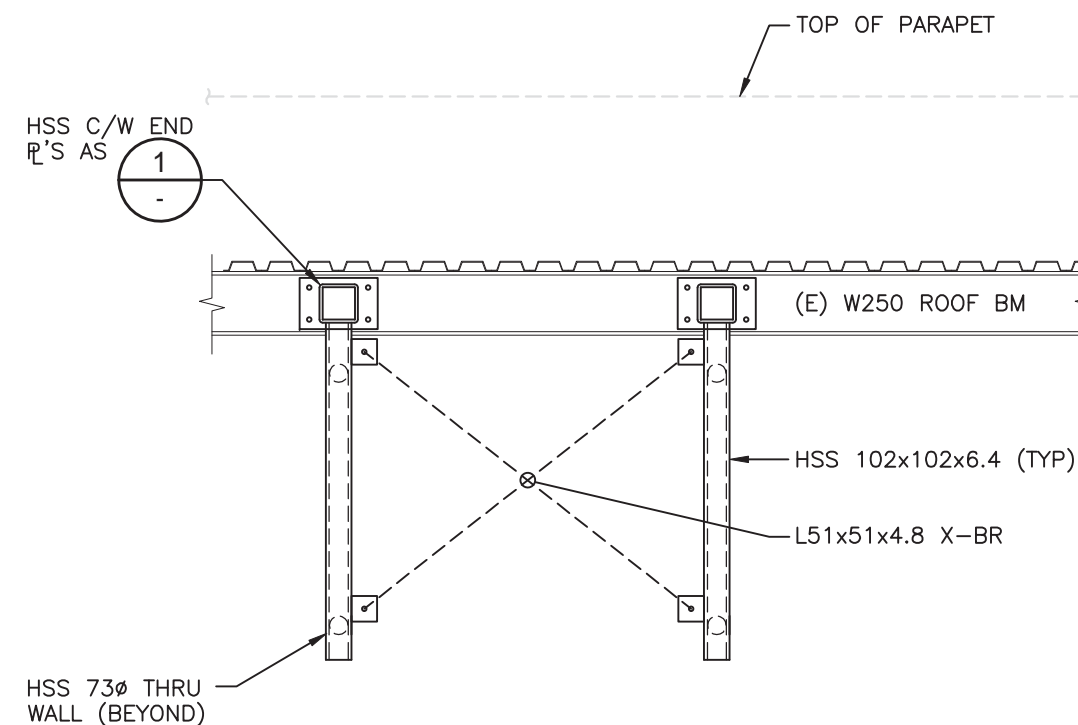
	2013.06.21	ISSUED FOR COORDINATION
	2013.05.02	ISSUED FOR CLIENT REVIEW
No.:	Date:	Description:
Revisions:		
Date:	MAY 2013	Drawing:
Scale:	1:30	<b>S602</b>
Drawn:	SR	
Checked:	GF	
Project:	212336	Of



1  
S601

## INTERIOR - BRACE ELEVATION

1:30



2  
S601

## INTERIOR - BRACE ELEVATION

1:30

	2013.06.21	ISSUED FOR COORDINATION
	2013.05.02	ISSUED FOR CLIENT REVIEW
No.:	Date:	Description:
Revisions:		
Date:	MAY 2013	Drawing:
Scale:	1:30	S603
Drawn:	SR	
Checked:	GF	
Project:	212336	Of

Copyright Reserved.  
This plan and design are, and at all times remain the exclusive property of GS Sayers Engineering Ltd. and cannot be used or reproduced without written consent. Written dimensions shall have precedence over scaled dimensions. Contractors shall verify and be responsible for all dimensions and conditions on the job and this office shall be informed of any variations from the dimensions and conditions shown on the drawings.  
Sketches may be issued which augment or alter the information presented on this drawing. It is the responsibility of parties using this drawing to ensure that they are in possession of all such sketches.



**GS Sayers**  
ENGINEERING LTD.

1661 West 5<sup>th</sup> Avenue  
Vancouver, BC V6J 1N5  
T: 604.734.8822  
F: 604.734.8842  
www.glotmansimpson.com

Project: Site ID: **W3285**  
**UBC STUDENT UNION BUILDING**  
6138 STUDENT UNION BLVD, VANCOUVER, BC



Sheet Title:  
**INTERIOR BRACE  
ELEVATIONS**