



UNIVERSITY OF BRITISH COLUMBIA VANCOUVER , BC
UBC Undergrad Life Sciences Teaching Labs

6270 University Boulevard, Vancouver , BC, Canada

Re-Issued for Development Permit
 April 29, 2016

Diamond and Schmitt Architects
 384 Adelaide Street West, Suite 300, Toronto, Canada M5V1R7
 Tel: 416 862 8800 Fax: 416 862 5508 info@dsai.ca www.dsai.ca



500-1500 West Georgia Street
 Vancouver, BC V6G 2Z6
 T 604-687-1898 F 604-682-5398

DO NOT SCALE DRAWINGS.
 ALL DRAWINGS, SPECIFICATIONS AND RELATED DOCUMENTS ARE THE COPYRIGHT PROPERTY OF THE ARCHITECT AND MUST BE USED ONLY FOR THE PROJECT AND NOT REPRODUCED OR TRANSMITTED IN ANY FORM OR BY ANY MEANS, ELECTRONIC OR MECHANICAL, INCLUDING PHOTOCOPYING, RECORDING, OR BY ANY INFORMATION STORAGE AND RETRIEVAL SYSTEM, WITHOUT THE WRITTEN PERMISSION OF THE ARCHITECT.
 THIS DRAWING IS NOT TO BE USED FOR CONSTRUCTION UNLESS SOLED BY THE ARCHITECT.

NOT FOR CONSTRUCTION

No.	Date	Description
1	2014 10 16	ISSUED FOR SCHEMATIC DESIGN COSTING
2	2014 10 16	ISSUED FOR DEVELOPMENT PERMIT
3	2016 04 29	RE-ISSUED FOR DEVELOPMENT PERMIT

DRAWING LIST

Architectural

Diamond and Schmitt Architects
 381 Adelaide Street West, Suite 300
 Toronto, Canada, M5V 1R7
 Tel: 416 862 8800 Fax: 416 862 5508
 E-mail: info@dsai.ca Web: dsai.ca

CEI Architecture
 1500 West Georgia, Suite 500
 Vancouver, Canada, V6G 2Z6
 Tel: 604 687 1898 Fax: 604 682 5398
 Web: ceichitecture.com

- A000 COVER SHEET
- A001 CONTEXT PLAN
- A010 SITE PLAN
- A016 SITE PHOTOS
- AP100 PLAN LEVEL 0000
- AP101 PLAN LEVEL 1000
- AP102 PLAN LEVEL 2000
- AP103 PLAN LEVEL 3000
- AP104 PLAN LEVEL 4000
- AP105 PLAN LEVEL 5000
- A301 BUILDING ELEVATIONS - EAST WING
- A302 BUILDING ELEVATIONS - NORTH WING
- A401 BUILDING SECTIONS - EAST WING

Landscape

PFS Studio
 1777 West 3rd Avenue
 Vancouver, Canada, V6I 1K7
 Tel: 604 736 5168 Fax: 604 7365167
 Web: pfs.bc.ca

- L001 TREE MANAGEMENT AND SURFACE DEMOLITION (FOR REFERENCE ONLY)
- L101 SITE PLAN
- L201 MATERIAL PLAN
- L301 LAYOUT PLAN
- L302 LAYOUT PLAN - SAWCUT PATTERN AND SKATEBOARD DETERRENTS
- L401 GRADING PLAN
- L501 PLANTING PLAN - TREES
- L502 PLANTING PLAN - SHRUBS AND GROUND COVER
- L503 PLANTING IRRIGATION PLAN
- L601 LIGHTING CONCEPT PLAN
- L701 DETAILS - HARDSCAPE
- L702 DETAILS - WALLS AND STAIRS
- L703 DETAILS - BENCHES AND TABLE
- L704 DETAILS - FURNISHING
- L801 DETAILS - PLANTING

Civil

Alpin & Martin Consultants Ltd.
 1111 West Hastings Street, Suite 910
 Vancouver, Canada, V6E 2J3
 Tel: 604 6878 9434
 E-mail: general@alpinmartin.com

- C-001 KEY PLAN
- C-002 STORM SEWER
- C-003 SANITARY SEWER
- C-004 WATERMAIN
- C-005 GAS AND STEAM
- C-006 POWER AND TELECOM
- C-007 SURVEY
- C-008 GENERAL NOTES
- C-009 GENERAL NOTES
- C-010 DEMOLITION PLAN

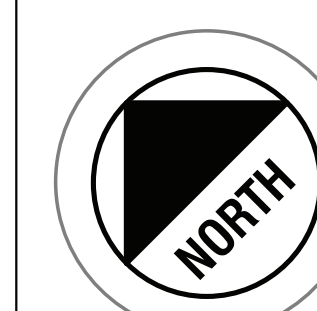
Reference

Survey Drawing Provided by:
 Underhill Geomatics Ltd.
 3430 Brighton Avenue, Suite 210A
 Burnaby, BC, V6A 3H4
 Tel: 604 732-3384 Fax: 604 732 4709
 H-2834 - Topographic Survey of the UBC Biological Sciences Building
 Date: January 29, 2015

Project Data

Total Site Area and Site Coverage	Not Applicable (No Defining Property Lines)			
Net and Gross Areas by Use (per UBC Design Guidelines-Institution)	Net Area - 9,211 m ² , Gross Area - 14, 244 m ² , Net to Gross Ratio - 1.6			
Building Height(s)	Building height is 14.5m above the Main Mall at the Northwest corner, and 21m above existing lane and new courtyard at Southeast corner.			
Setbacks: Front Yard, Rear Yard and Side Yards (permitted + proposed)	Not Applicable			
Number of Parking Spaces Loading Bicycle Parking Spaces (Class 1 & 2)	Not Applicable One (From Lane) 120 Spaces (118 Class B, 2 Class A)			
Number of Dwelling Units, unit sizes, bedrooms per unit + CRUs	Not Applicable			
Floor Space ratio permitted and proposed	Not Applicable			
List of variances requested and rationale	Not Applicable			
Summary of floor areas by level		Existing North Wing (sq m)	New East Wing (sq m)	Northwest corner (sq m)
		1,101	1,120	--
Level 0000		1,139	1,579	--
Level 2000		1,192	2,112	--
Level 3000		1,190	2,098	263
Level 4000 - (Greenhouse/Stair)		247	2,054	--
Level 5000 - Mechanical Penthouse		-	150	--
Total (sq m)		4,869	9,112	263
Total Building (sq m)				14, 244
INCLUDING EXISTING GREENHOUSE AREA				

Diamond Schmitt Architects
 384 Adelaide Street West, Suite 300, Toronto, Canada M5V 1R7
 Tel: 416 862 8800 Fax: 416 862 5508 info@dsai.ca www.dsai.ca
 In Collaboration With:
HDR | CEI Architecture Associates, Inc.
 500 - 1500 West Georgia Street, Vancouver, British Columbia, Canada V6G 2Z6
 Tel: 604 687 1898 Fax: 604 682 5398 www.hdr.com



UBC Undergrad Life Sciences Teaching Labs

6270 University Blvd, Vancouver, BC Canada

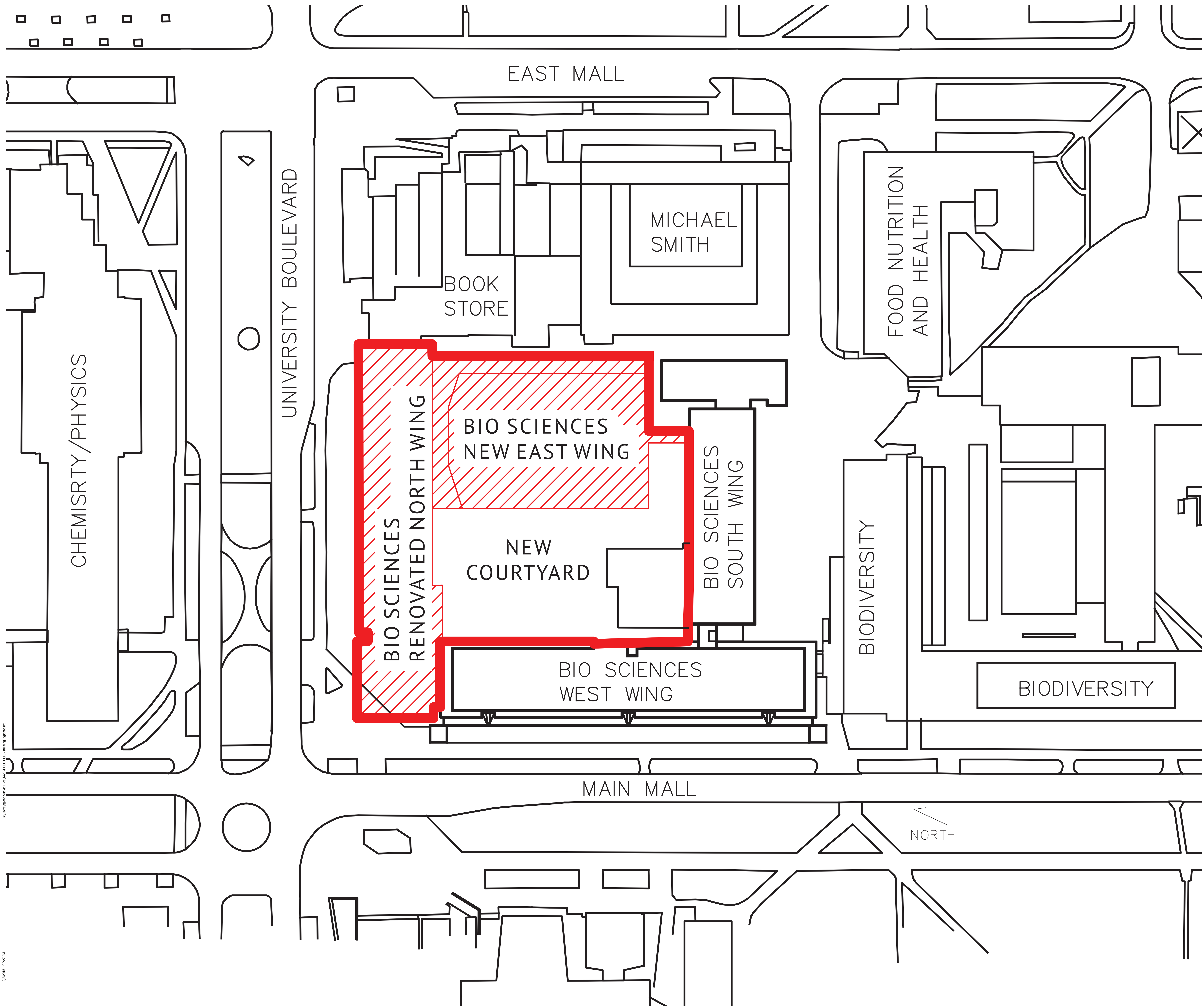
Drawing Name

COVER SHEET

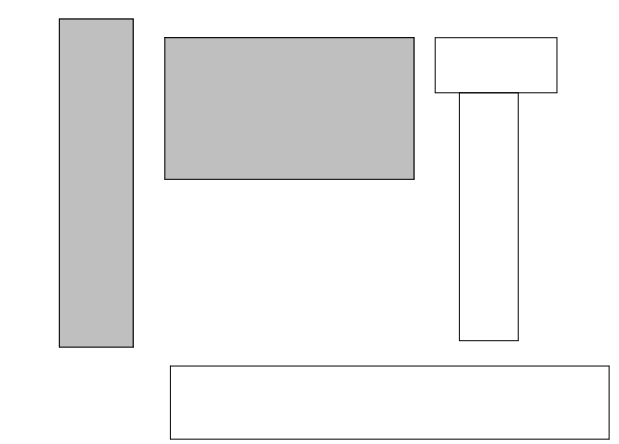
Scale: N.T.S.
 Project No: 05A1-1420; CEI-2014046
 Date: 14 10 16

A000

2020009 15.05.15 PM



CONTRACTOR MUST CHECK & VERIFY ALL DIMENSIONS ON THE JOB.
 DO NOT SCALE DRAWING.
 ALL DIMENSIONS, SPECIFICATIONS AND MATERIALS OCCURRENCES ARE THE PROPERTY OF THE ARCHITECT AND NOT TO BE REPRODUCED OR COPIED IN ANY MANNER WITHOUT THE WRITTEN PERMISSION OF THE ARCHITECT.
 THIS DRAWING IS NOT TO BE USED FOR CONSTRUCTION UNLESS USED BY THE ARCHITECT.



NOT FOR CONSTRUCTION

ISSUED	No.	Date	Description
	1	2016 04 29	RE- ISSUED FOR DEVELOPMENT PERMIT

C:\Users\jgibson\OneDrive\Documents\150311\150311_UBC_Life_Sciences_Teaching_Labs.dwg

12/2015 1:02:27 PM

Diamond Schmitt Architects
 384 Adelaide Street West, Suite 300, Toronto, Canada M5V1B7
 Tel: 416 862 8800 Fax: 416 862 5508 info@dsai.ca www.dsai.ca
 In Collaboration With:
HDR | CEI Architecture Associates, Inc.
 100 West George Street, Vancouver, British Columbia, Canada V6V 2G9
 Tel: 604 687 1558 Fax: 604 682 5598 www.ceiarchitects.com

UBC Undergrad Life Sciences Teaching Labs

6270 University Blvd, Vancouver, BC

CONTEXT PLAN

Scale:
 Project No: 1420
 Date: October 16, 2015

A001



Existing Main Entry at Main Mall and University Boulevard



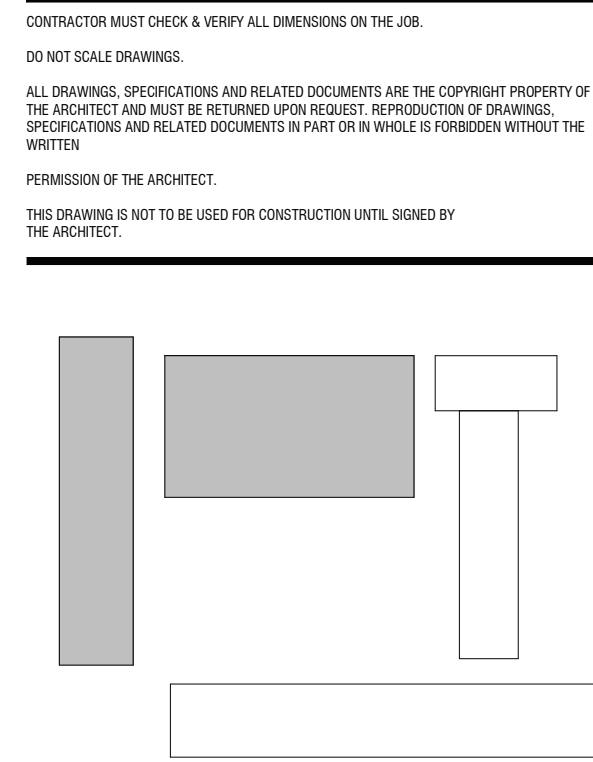
North wing looking east along University Boulevard



North elevation of north wing



North east corner of North Wing



NOT FOR CONSTRUCTION

ISSUED	No.	Date	Description
	1	2015 04 29	RE-ISSUED FOR DEVELOPMENT PERMIT



View along lane looking south



South east corner of south wing



South Wing looking west



South west corner from service area



South Wing elevation



South west corner at service access to courtyard



South west corner of West Wing on Main Mall



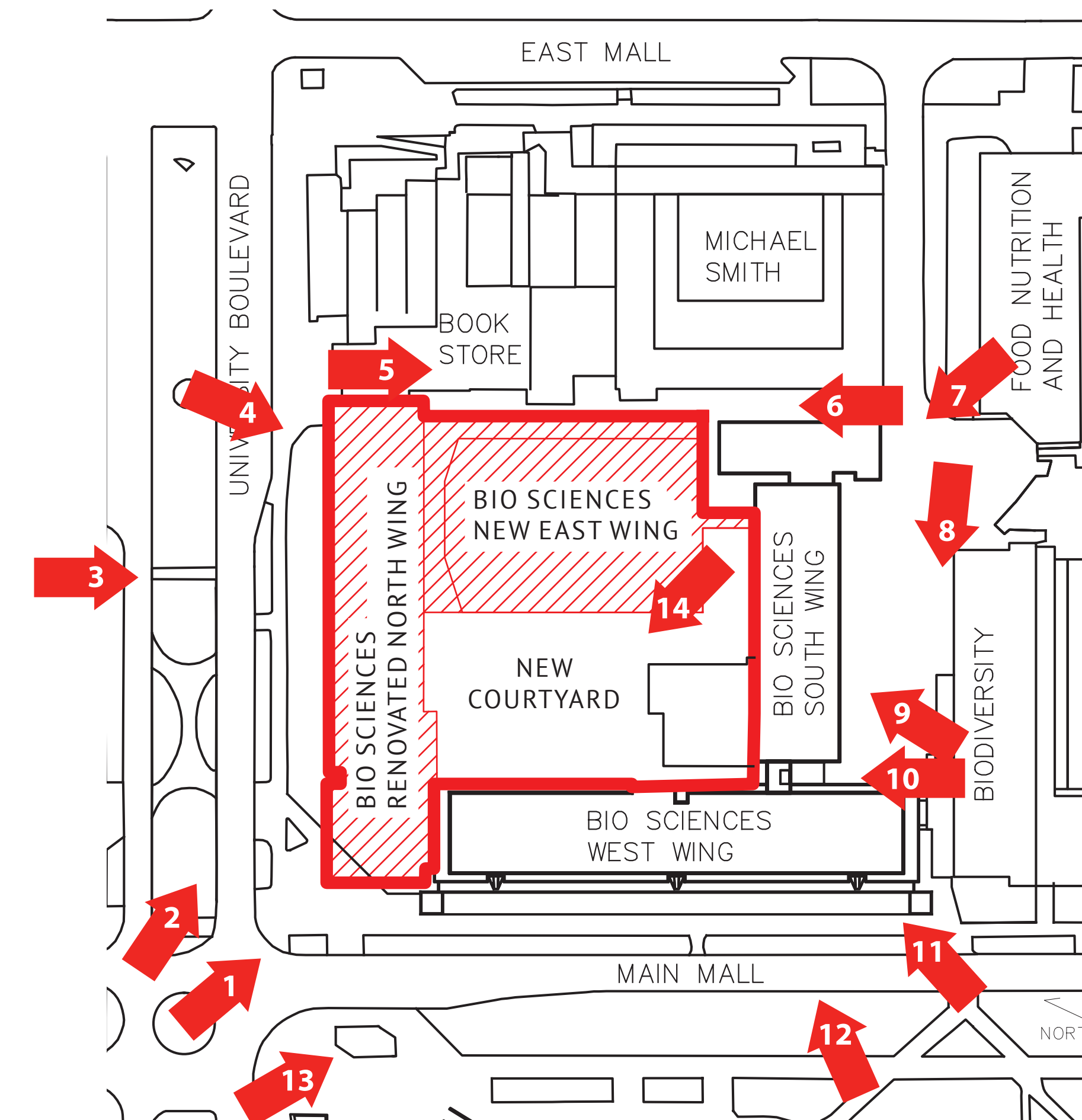
West Wing elevation along Main Mall



North west corner and west wing on Main Mall



Existing interior courtyard looking north west



Diamond Schmitt Architects
 384 Adelaide Street West, Suite 300, Toronto, Canada M5V1B7
 Tel: 416 862 8800 Fax: 416 862 5508 info@dsai.ca www.dsai.ca

In Collaboration With:
HDR CEI Architecture Associates, Inc.
 200 1000 West Georgia Street, Vancouver, British Columbia, Canada V6Z 2G1
 Tel: 604 687 1558 Fax: 604 682 5598 www.ceiarchitects.com

UBC Undergrad Life Sciences Teaching Labs

6270 University Blvd. Vancouver, BC

Site Photos

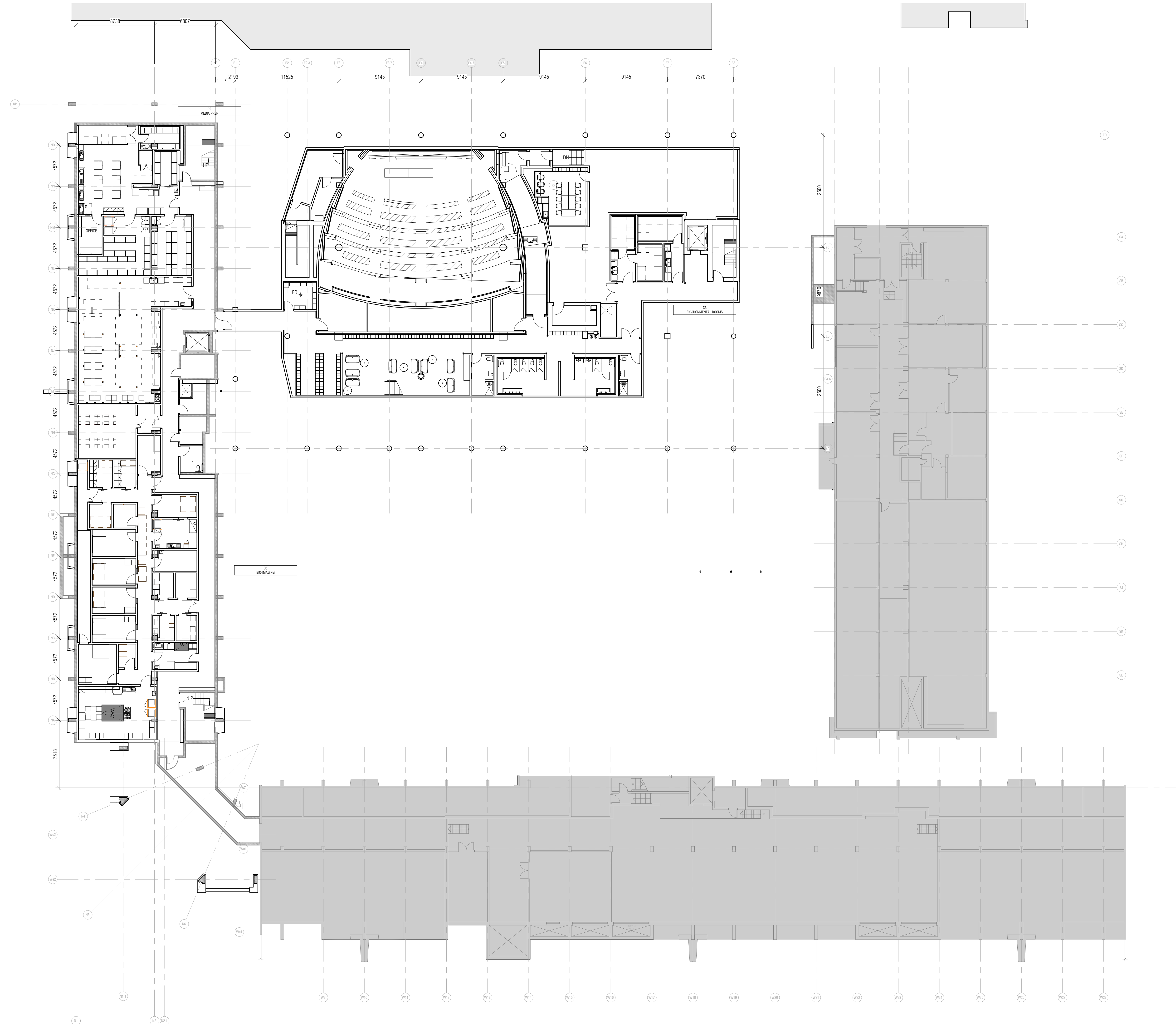
Scale:
 Project No: 1420
 Date: October 16, 2015

© DiamondSchmittArchitects.com 10/16/15 UBC L.L.T. - Building_09082015

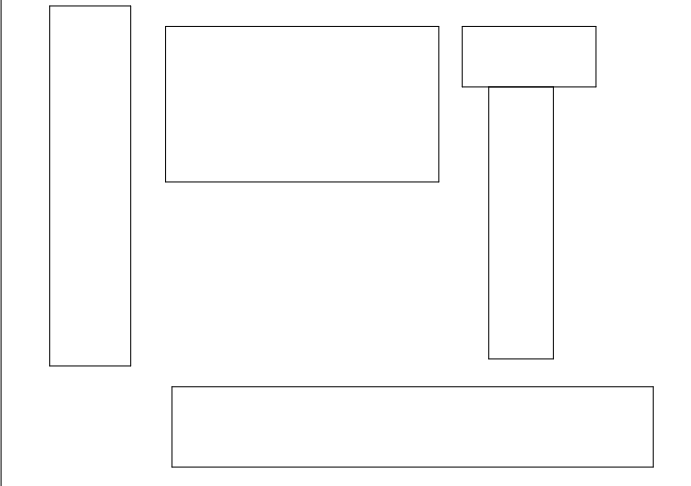
12/20/15 1:30:27 PM

C:\Users\jgibber\OneDrive\Files\1420-1 UBC UTL Building_030616.rvt

4/27/2016 4:27:03 PM



CONTRACTOR MUST CHECK & VERIFY ALL DIMENSIONS ON THE JOB.
 DO NOT SCALE DRAWINGS.
 ALL DRAWINGS, SPECIFICATIONS AND RELATED DOCUMENTS ARE THE COPYRIGHT PROPERTY OF THE ARCHITECT AND MUST BE RETURNED UPON REQUEST. REPRODUCTION OF DRAWINGS, SPECIFICATIONS AND RELATED DOCUMENTS IN PART OR IN WHOLE IS FORBIDDEN WITHOUT THE WRITTEN PERMISSION OF THE ARCHITECT.
 THIS DRAWING IS NOT TO BE USED FOR CONSTRUCTION UNTIL SIGNED BY THE ARCHITECT.



NOT FOR CONSTRUCTION

ISSUED

No.	Date	Description
1	2015 10 02	ISSUED FOR USER GROUP REVIEW
5	2015 12 03	ISSUED FOR DEVELOPMENT PERMIT
14	2016 04 29	RE-ISSUED FOR DEVELOPMENT PERMIT

Diamond Schmitt Architects
 384 Adelaide Street West, Suite 300, Toronto, Canada M5V 1R7
 Tel: 416 862 8800 Fax: 416 862 5508 info@dsai.ca www.dsai.ca
 In Collaboration With:
HDR | CEI Architecture Associates, Inc.
 500 - 1500 West Georgia Street, Vancouver, British Columbia, Canada V6G 2Z6
 Tel: 604 687 1098 Fax: 604 682 5398 www.ceiarchitecture.com

UBC Undergrad Life Sciences Teaching Labs

6270 University Blvd. Vancouver, BC

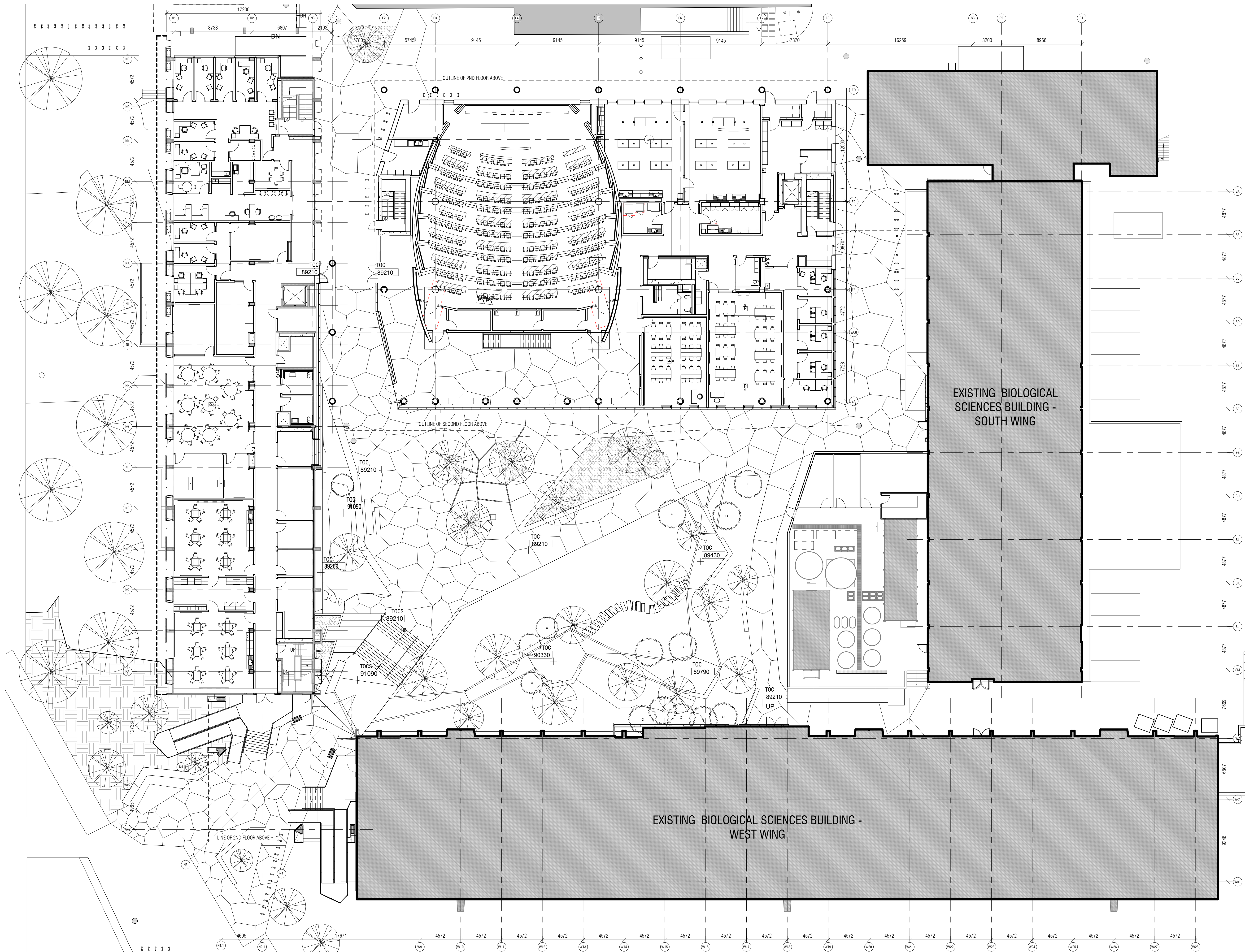
PLAN LEVEL 0000

Scale: 1 : 200
 Project No: 1420
 Date: April, 2016

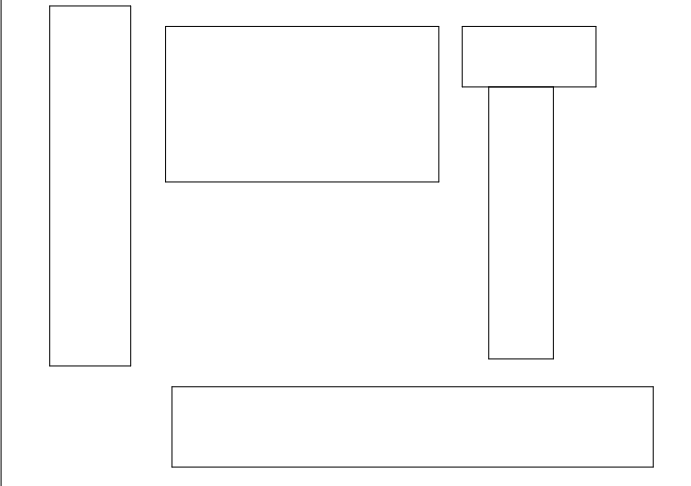
AP 100

C:\Users\jgibber\OneDrive\Files\1420-1 UBC UTL Building_03062016.rvt

4/27/2016 4:28:16 PM



CONTRACTOR MUST CHECK & VERIFY ALL DIMENSIONS ON THE JOB.
 DO NOT SCALE DRAWINGS.
 ALL DRAWINGS, SPECIFICATIONS AND RELATED DOCUMENTS ARE THE COPYRIGHT PROPERTY OF THE ARCHITECT AND MUST BE RETURNED UPON REQUEST. REPRODUCTION OF DRAWINGS, SPECIFICATIONS AND RELATED DOCUMENTS IN PART OR IN WHOLE IS FORBIDDEN WITHOUT THE WRITTEN PERMISSION OF THE ARCHITECT.
 THIS DRAWING IS NOT TO BE USED FOR CONSTRUCTION UNTIL SIGNED BY THE ARCHITECT.



NOT FOR CONSTRUCTION

ISSUED

No.	Date	Description
1	2015 10 02	ISSUED FOR USER GROUP REVIEW
5	2015 12 03	ISSUED FOR DEVELOPMENT PERMIT
14	2016 04 29	RE-ISSUED FOR DEVELOPMENT PERMIT

Diamond Schmitt Architects
 384 Adelaide Street West, Suite 300, Toronto, Canada M5V 1R7
 Tel: 416 862 8800 Fax: 416 862 5508 info@dsai.ca www.dsai.ca
 In Collaboration With:
HDR | CEI Architecture Associates, Inc.
 500 - 1590 West Georgia Street, Vancouver, British Columbia, Canada V6G 2Z6
 Tel: 604 687 1038 Fax: 604 682 5398 www.ceiarchitecture.com

UBC Undergrad Life Sciences Teaching Labs

6270 University Blvd. Vancouver, BC

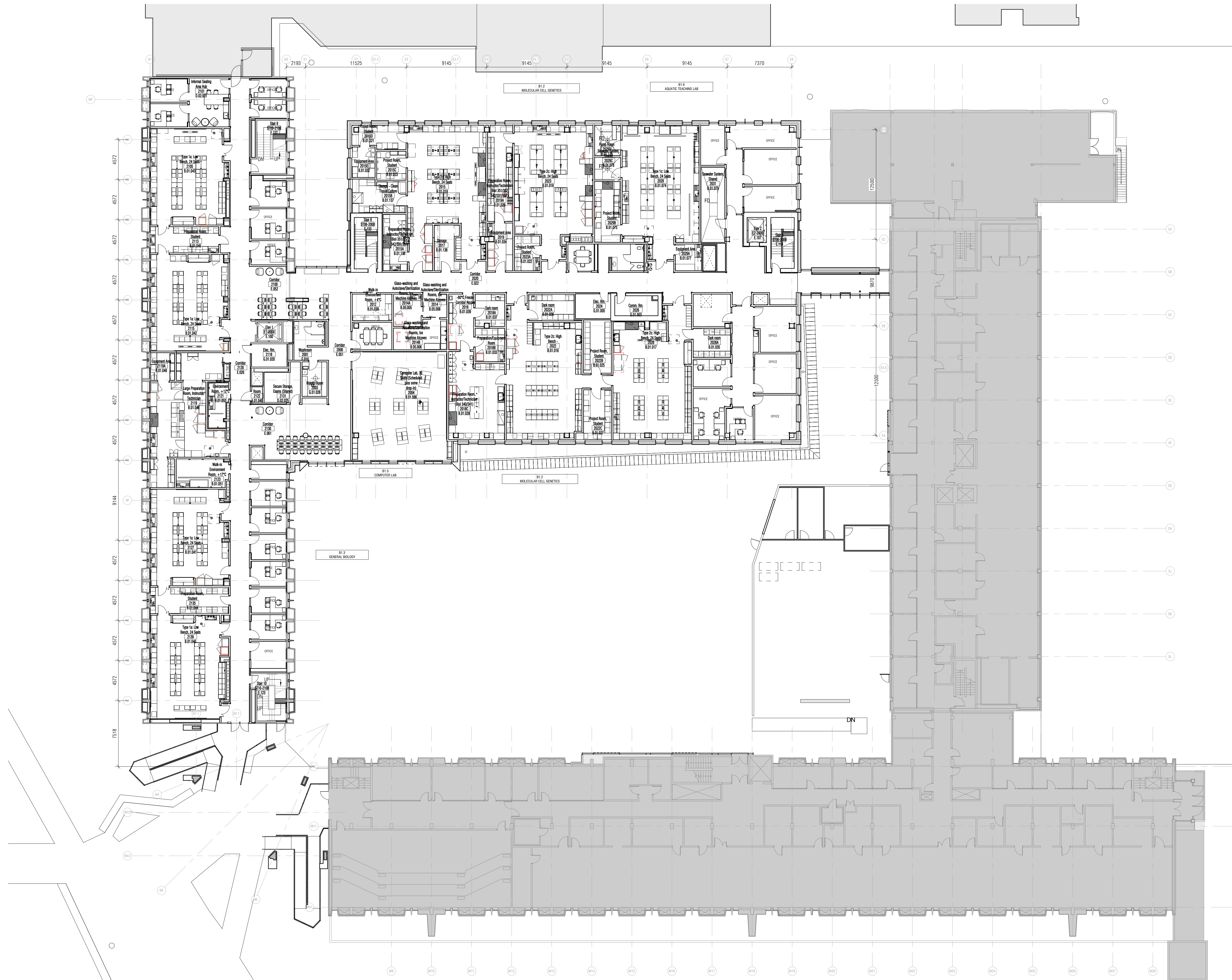
PLAN LEVEL 1000

Scale: 1 : 200
 Project No: 1420
 Date: April, 2016

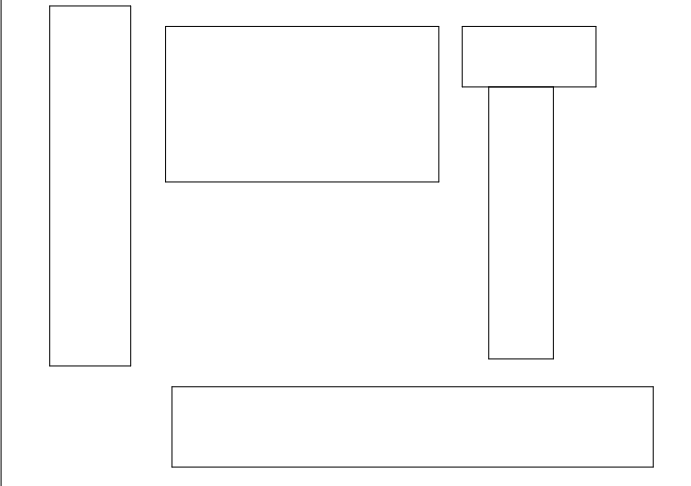
AP 101

C:\Users\jgobarr\OneDrive\Files\1420-1 UBC ULL Building_03062016.rvt

4/27/2016 4:27:22 PM



CONTRACTOR MUST CHECK & VERIFY ALL DIMENSIONS ON THE JOB.
 DO NOT SCALE DRAWINGS.
 ALL DRAWINGS, SPECIFICATIONS AND RELATED DOCUMENTS ARE THE COPYRIGHT PROPERTY OF THE ARCHITECT AND MUST BE RETURNED UPON REQUEST. REPRODUCTION OF DRAWINGS, SPECIFICATIONS AND RELATED DOCUMENTS IN PART OR IN WHOLE IS FORBIDDEN WITHOUT THE WRITTEN PERMISSION OF THE ARCHITECT.
 THIS DRAWING IS NOT TO BE USED FOR CONSTRUCTION UNTIL SIGNED BY THE ARCHITECT.



NOT FOR CONSTRUCTION

ISSUED

No.	Date	Description
1	2015 10 02	ISSUED FOR USER GROUP REVIEW
5	2015 12 03	ISSUED FOR DEVELOPMENT PERMIT

Diamond Schmitt Architects
 384 Adelaide Street West, Suite 300, Toronto, Canada M5V 1R7
 Tel: 416 862 8800 Fax: 416 862 5508 info@dsai.ca www.dsai.ca
 In Collaboration With:
HDR | CEI Architecture Associates, Inc.
 500 - 1590 West Georgia Street, Vancouver, British Columbia, Canada V6G 2Z6
 Tel: 604 687 1098 Fax: 604 682 5398 www.ceiarchitecture.com

UBC Undergrad Life Sciences Teaching Labs

6270 University Blvd. Vancouver, BC

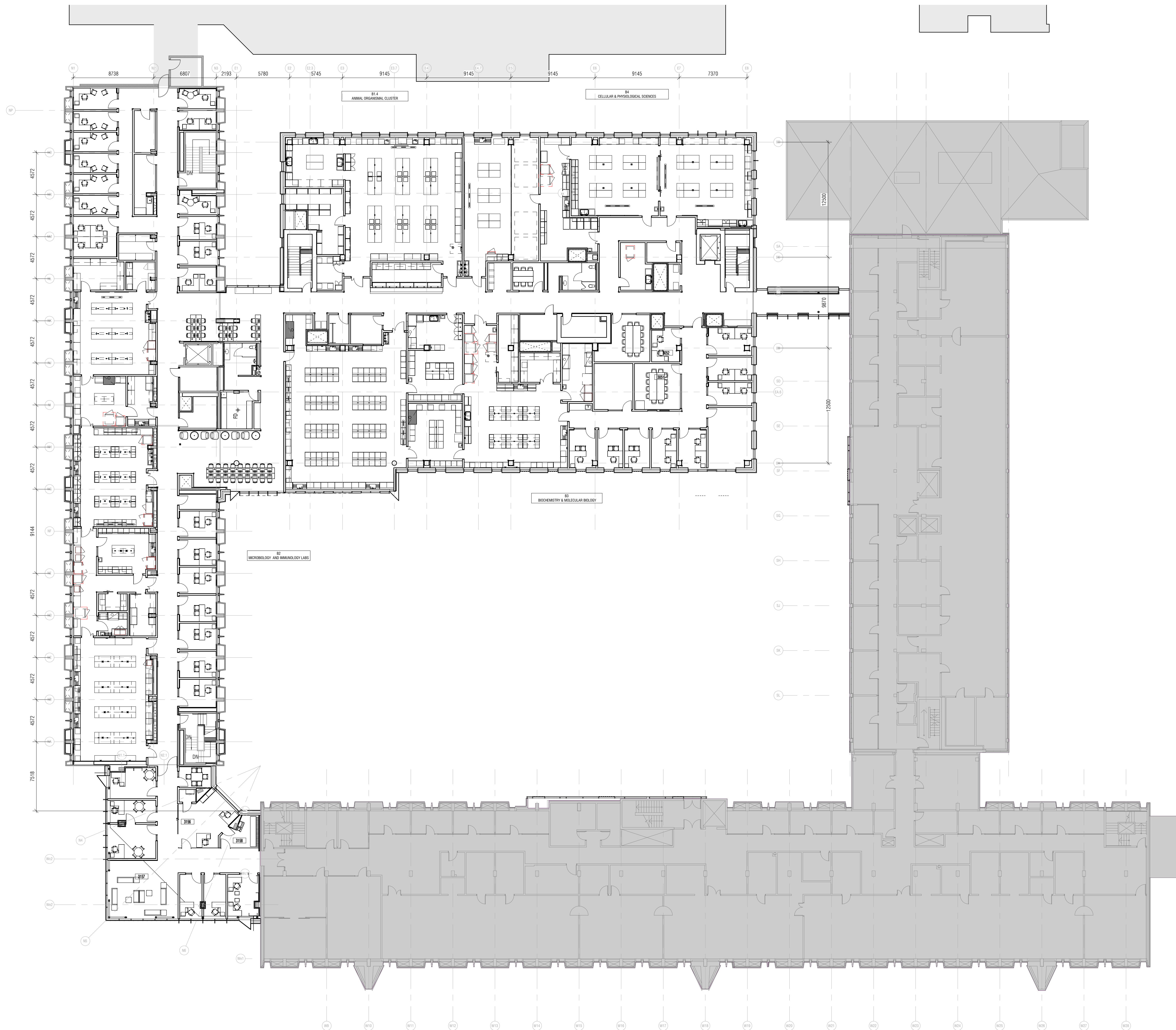
PLAN LEVEL 2000

Scale: 1 : 200
 Project No: 1420
 Date: April, 2016

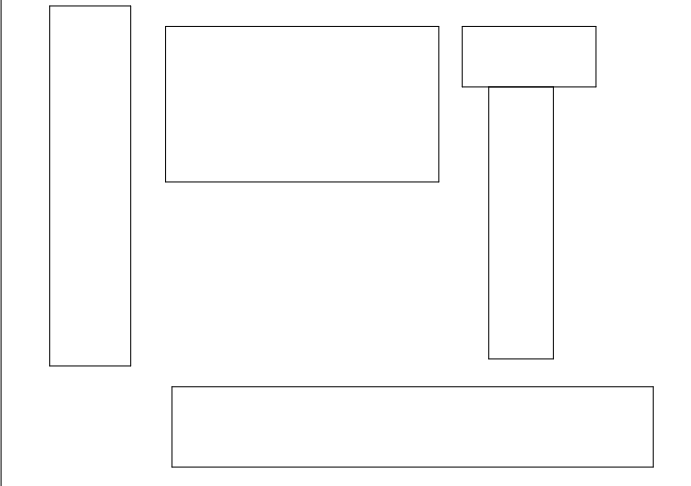
AP 102

C:\Users\jgibber\OneDrive\Files\1420-1 UBC ULL Building_030616.rvt

4/27/2016 4:27:28 PM



CONTRACTOR MUST CHECK & VERIFY ALL DIMENSIONS ON THE JOB.
 DO NOT SCALE DRAWINGS.
 ALL DRAWINGS, SPECIFICATIONS AND RELATED DOCUMENTS ARE THE COPYRIGHT PROPERTY OF THE ARCHITECT AND MUST BE RETURNED UPON REQUEST. REPRODUCTION OF DRAWINGS, SPECIFICATIONS AND RELATED DOCUMENTS IN PART OR IN WHOLE IS FORBIDDEN WITHOUT THE WRITTEN PERMISSION OF THE ARCHITECT.
 THIS DRAWING IS NOT TO BE USED FOR CONSTRUCTION UNTIL SIGNED BY THE ARCHITECT.



NOT FOR CONSTRUCTION

ISSUED

No.	Date	Description
1	2015 10 02	ISSUED FOR USER GROUP REVIEW
5	2015 12 03	ISSUED FOR DEVELOPMENT PERMIT
14	2016 04 29	RE-ISSUED FOR DEVELOPMENT PERMIT

Diamond Schmitt Architects
 384 Adelaide Street West, Suite 300, Toronto, Canada M5V 1R7
 Tel: 416 862 8800 Fax: 416 862 5508 info@dsai.ca www.dsai.ca
 In Collaboration With:
HDR | CEI Architecture Associates, Inc.
 500 - 1590 West Georgia Street, Vancouver, British Columbia, Canada V6G 2Z6
 Tel: 604 687 1038 Fax: 604 682 5398 www.ceiarchitecture.com

UBC Undergrad Life Sciences Teaching Labs

6270 University Blvd. Vancouver, BC

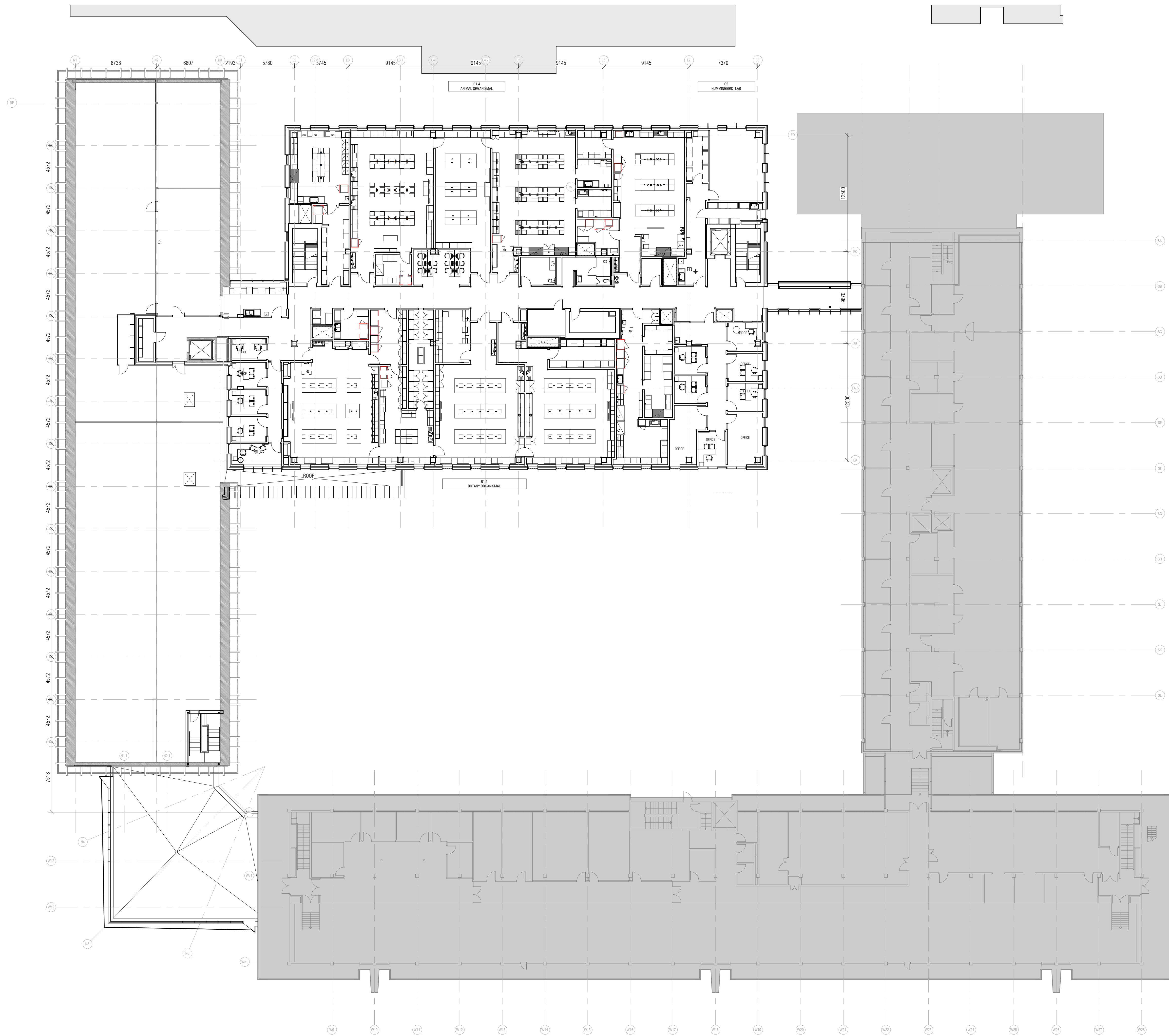
PLAN LEVEL 3000

Scale: 1 : 200
 Project No: 1420
 Date: April, 2016

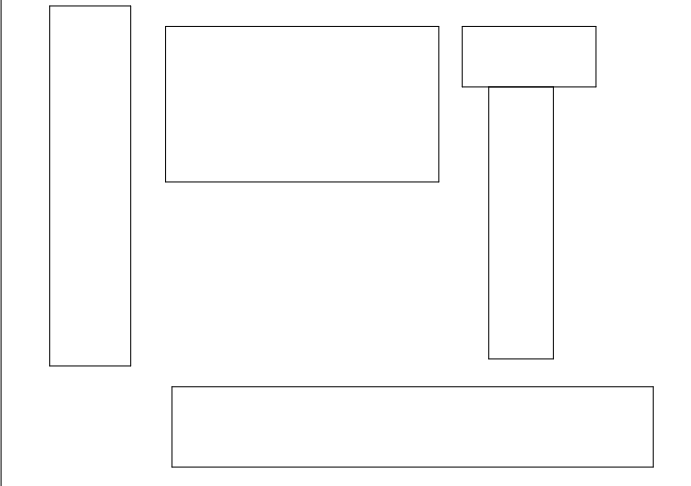
AP 103

C:\Users\jgibber\OneDrive\Files\1420-1 UBC ULL Building_030616.rvt

4/27/2016 4:27:32 PM



CONTRACTOR MUST CHECK & VERIFY ALL DIMENSIONS ON THE JOB.
 DO NOT SCALE DRAWINGS.
 ALL DRAWINGS, SPECIFICATIONS AND RELATED DOCUMENTS ARE THE COPYRIGHT PROPERTY OF THE ARCHITECT AND MUST BE RETURNED UPON REQUEST. REPRODUCTION OF DRAWINGS, SPECIFICATIONS AND RELATED DOCUMENTS IN PART OR IN WHOLE IS FORBIDDEN WITHOUT THE WRITTEN PERMISSION OF THE ARCHITECT.
 THIS DRAWING IS NOT TO BE USED FOR CONSTRUCTION UNTIL SIGNED BY THE ARCHITECT.



NOT FOR CONSTRUCTION

ISSUED

No.	Date	Description
1	2015 10 02	ISSUED FOR USER GROUP REVIEW
5	2015 12 03	ISSUED FOR DEVELOPMENT PERMIT
14	2016 04 29	RE-ISSUED FOR DEVELOPMENT PERMIT

Diamond Schmitt Architects
 384 Adelaide Street West, Suite 300, Toronto, Canada M5V 1R7
 Tel: 416 862 8800 Fax: 416 862 5508 info@dsai.ca www.dsai.ca
 In Collaboration With:
HDR | CEI Architecture Associates, Inc.
 500 - 1500 West Georgia Street, Vancouver, British Columbia, Canada V6G 2Z6
 Tel: 604 687 1038 Fax: 604 682 5398 www.ceiarchitecture.com

UBC Undergrad Life Sciences Teaching Labs

6270 University Blvd. Vancouver, BC

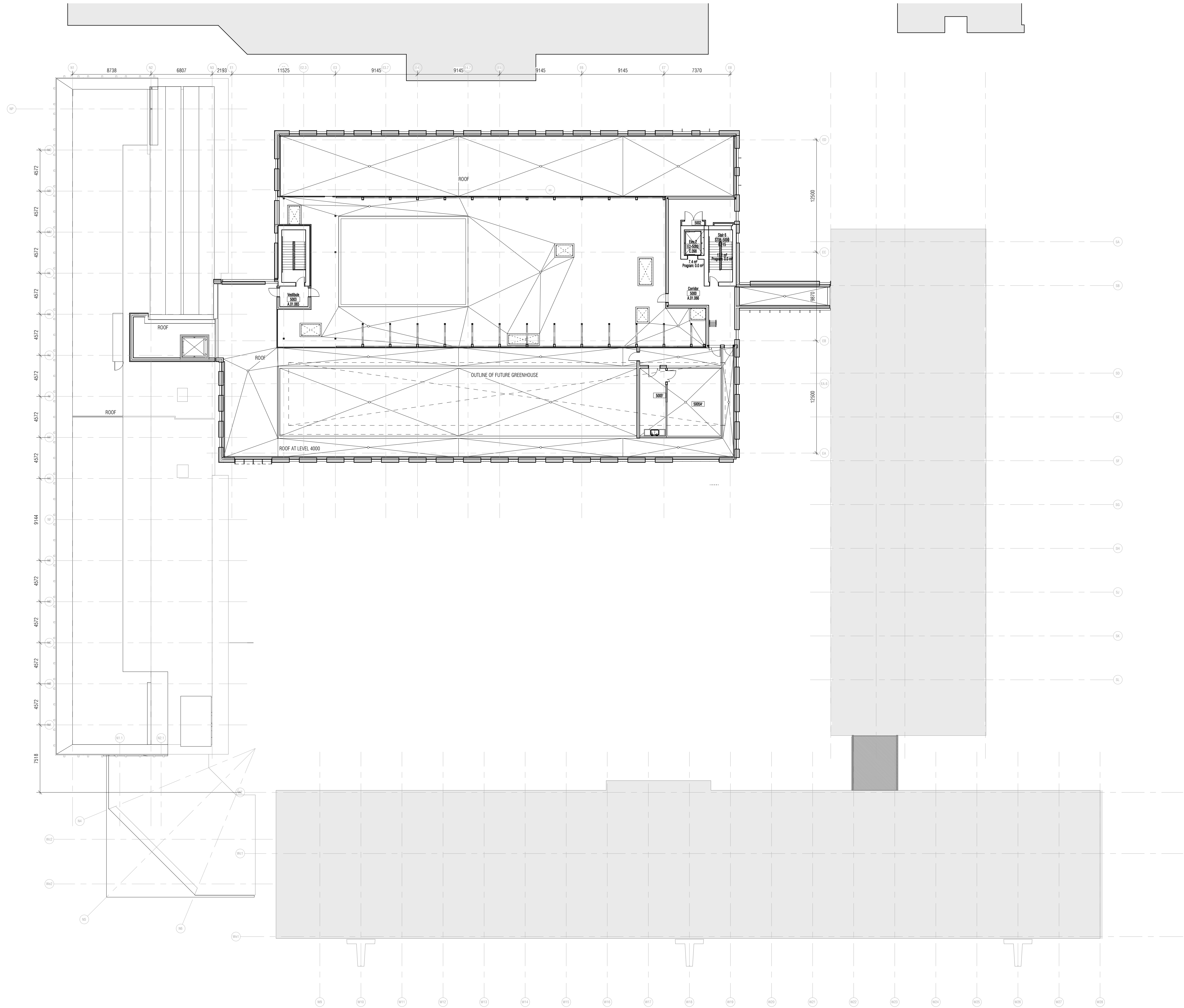
PLAN LEVEL 4000

Scale: 1 : 200
 Project No: 1420
 Date: April, 2016

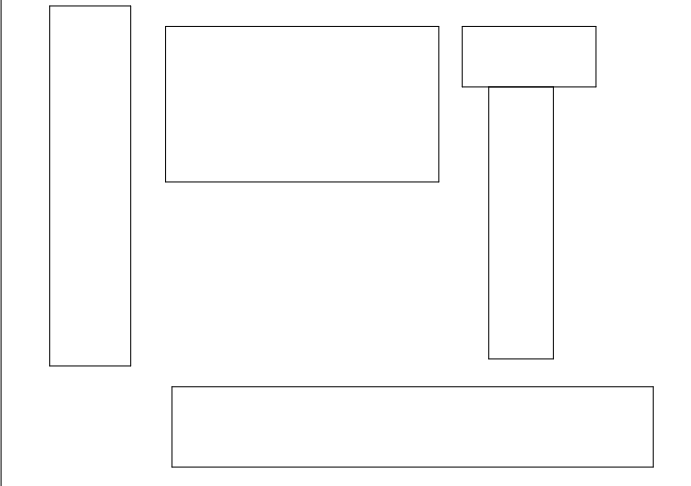
AP 104

C:\Users\jgibber\Revit_Files\1420-1 UBC ULL Building_030616.rvt

4/27/2016 4:27:33 PM



CONTRACTOR MUST CHECK & VERIFY ALL DIMENSIONS ON THE JOB.
 DO NOT SCALE DRAWINGS.
 ALL DRAWINGS, SPECIFICATIONS AND RELATED DOCUMENTS ARE THE COPYRIGHT PROPERTY OF THE ARCHITECT AND MUST BE RETURNED UPON REQUEST. REPRODUCTION OF DRAWINGS, SPECIFICATIONS AND RELATED DOCUMENTS IN PART OR IN WHOLE IS FORBIDDEN WITHOUT THE WRITTEN PERMISSION OF THE ARCHITECT.
 THIS DRAWING IS NOT TO BE USED FOR CONSTRUCTION UNTIL SIGNED BY THE ARCHITECT.



NOT FOR CONSTRUCTION

ISSUED

No.	Date	Description
5	2015 12 03	ISSUED FOR DEVELOPMENT PERMIT
14	2016 04 29	RE-ISSUED FOR DEVELOPMENT PERMIT

Diamond Schmitt Architects
 384 Adelaide Street West, Suite 300, Toronto, Canada M5V 1R7
 Tel: 416 862 8800 Fax: 416 862 5508 info@dsai.ca www.dsai.ca
 In Collaboration With:
HDR | CEI Architecture Associates, Inc.
 500 - 1500 West Georgia Street, Vancouver, British Columbia, Canada V6G 2Z6
 Tel: 604 687 1038 Fax: 604 682 5398 www.ceiarchitecture.com

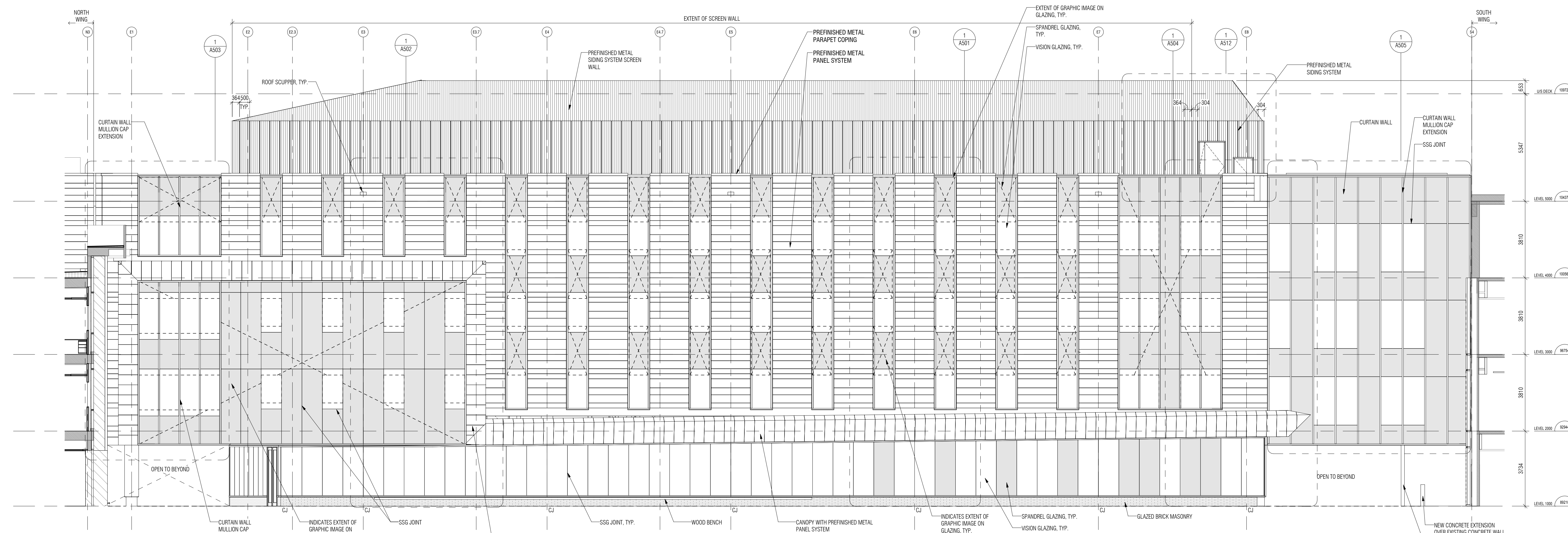
UBC Undergrad Life Sciences Teaching Labs

6270 University Blvd. Vancouver, BC

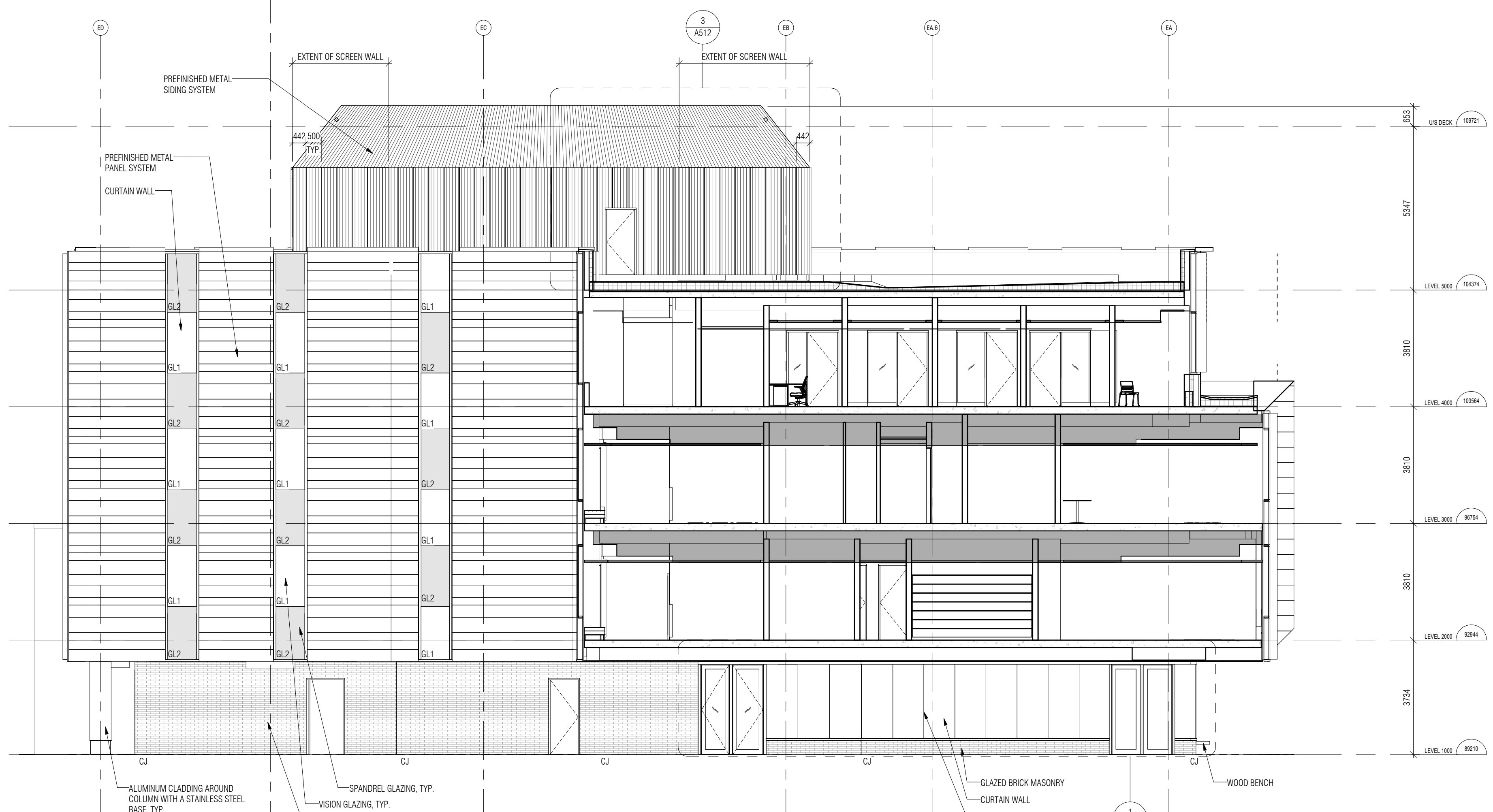
PLAN LEVEL 5000

Scale: 1 : 200
 Project No: 1420
 Date: April, 2016

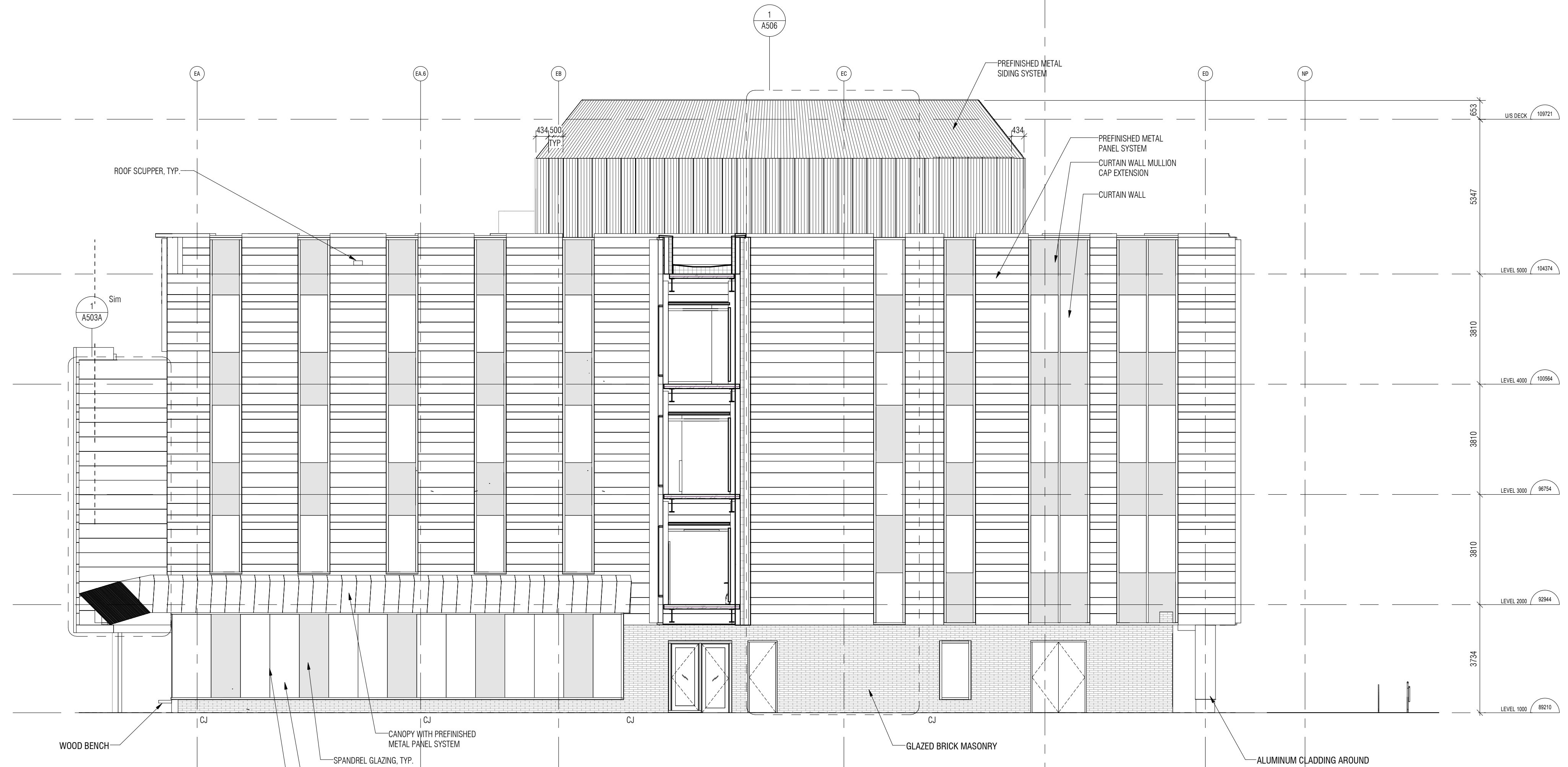
AP 105



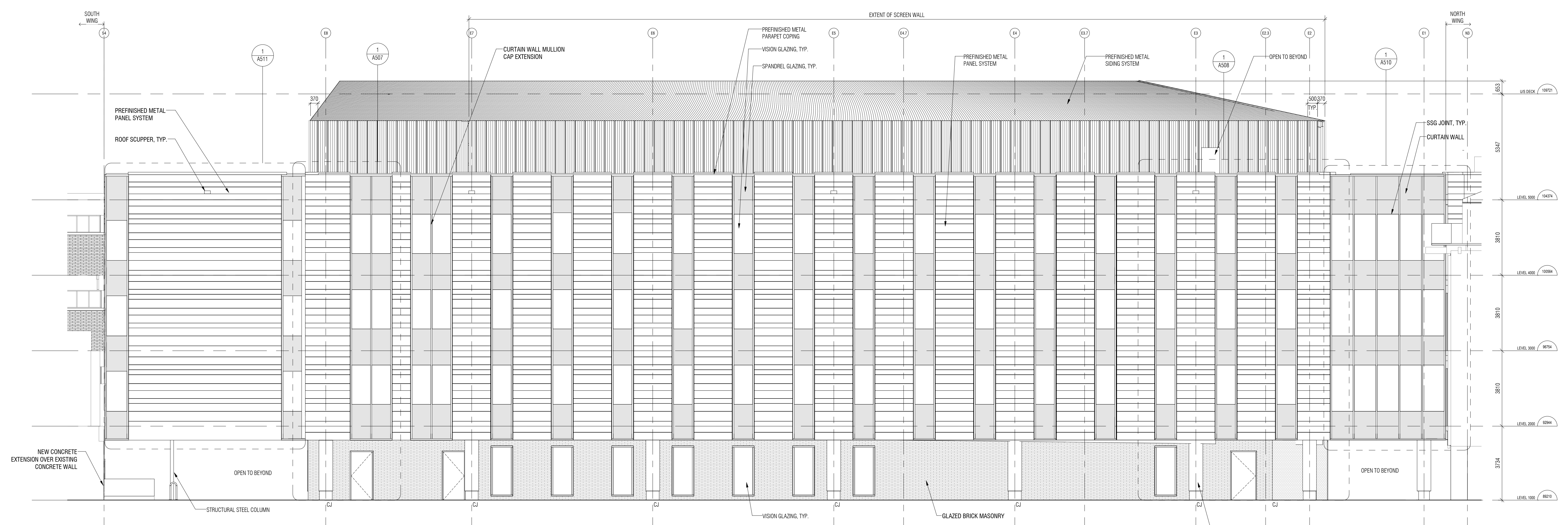
1 EAST WING - WEST ELEVATION
A301 1:100



4 EAST WING - NORTH ELEVATION
A301 1:100



3 EAST WING - SOUTH ELEVATION
A301 1:100



2 EAST WING - EAST ELEVATION
A301 1:100

CONTRACTOR MUST CHECK AND VERIFY ALL DIMENSIONS ON THE JOB.
 24 HOUR CALL NUMBER:
 ALL DIMENSIONS, SPECIFICATIONS AND RELATED DOCUMENTS ARE THE COPYRIGHT PROPERTY OF THE ARCHITECT. THEY ARE TO BE USED ONLY FOR THE PROJECT AND SITE SPECIFIC. ANY REPRODUCTION AND RELATED DOCUMENTS IN PART OR IN WHOLE IS FORBIDDEN WITHOUT THE WRITTEN PERMISSION OF THE ARCHITECT.
 THE DRAWING IS NOT TO BE USED FOR CONSTRUCTION UNLESS ISSUED BY THE ARCHITECT.

NOT FOR CONSTRUCTION

ISSUED

No.	Date	Description
1	2015 11 06	ISSUED FOR INCLUSION IN M.A.E. STATEMENT OF REQUIREMENTS
2	2015 12 03	ISSUED FOR DEVELOPMENT PERMIT
3	2016 03 24	ISSUED FOR INTERIM COSTING
4	2016 04 29	RE-ISSUED FOR DEVELOPMENT PERMIT

EAST WING - WINDOW & WALL AREAS

FAÇADE	ZONE	WALL AREA	CLEAR GLAZING	FITTED GLAZING	OPAQUE GLAZING
NORTH FAÇADE	ZONE 1	179,29m ²	27,98m ²	27,98m ²	114,33m ²
	ZONE 2	165,43m ²	6,89m ²	6,89m ²	80,55m ²
EAST FAÇADE	ZONE 1	475,09m ²	118,77m ²	118,77m ²	237,55m ²
	ZONE 2	473,60m ²	96,84m ²	96,84m ²	80,70m ²
SOUTH FAÇADE	ZONE 1	276,30m ²	25,28m ²	25,28m ²	46,36m ²
	ZONE 2	274,59m ²	21,91m ²	21,91m ²	14,20m ²
WEST FAÇADE	ZONE 1	277,96m ²	196,13m ²	196,13m ²	146,21m ²
	ZONE 2	440,20m ²	43,43m ²	43,43m ²	105,26m ²
TOTAL:	ZONE 1	1203,08m ²	430,47m ²	430,47m ²	344,16m ²
	ZONE 2	1274,84m ²	127,84m ²	127,84m ²	230,32m ²

Diamond Schmitt Architects
 184 Adelaide Street West, Suite 300, Toronto, Canada M5H 1P7
 Tel: 416 862 8800 Fax: 416 862 5508 info@dsai.ca www.dsai.ca

In Collaboration With:
HDR | CEI Architecture Associates, Inc.
 500 - 1300 West Georgia Street, Vancouver, British Columbia, Canada V6G 2Z9
 Tel: 604 687 1168 Fax: 604 687 2288 www.ceiarchitecture.com

UBC Undergrad Life Sciences Teaching Labs

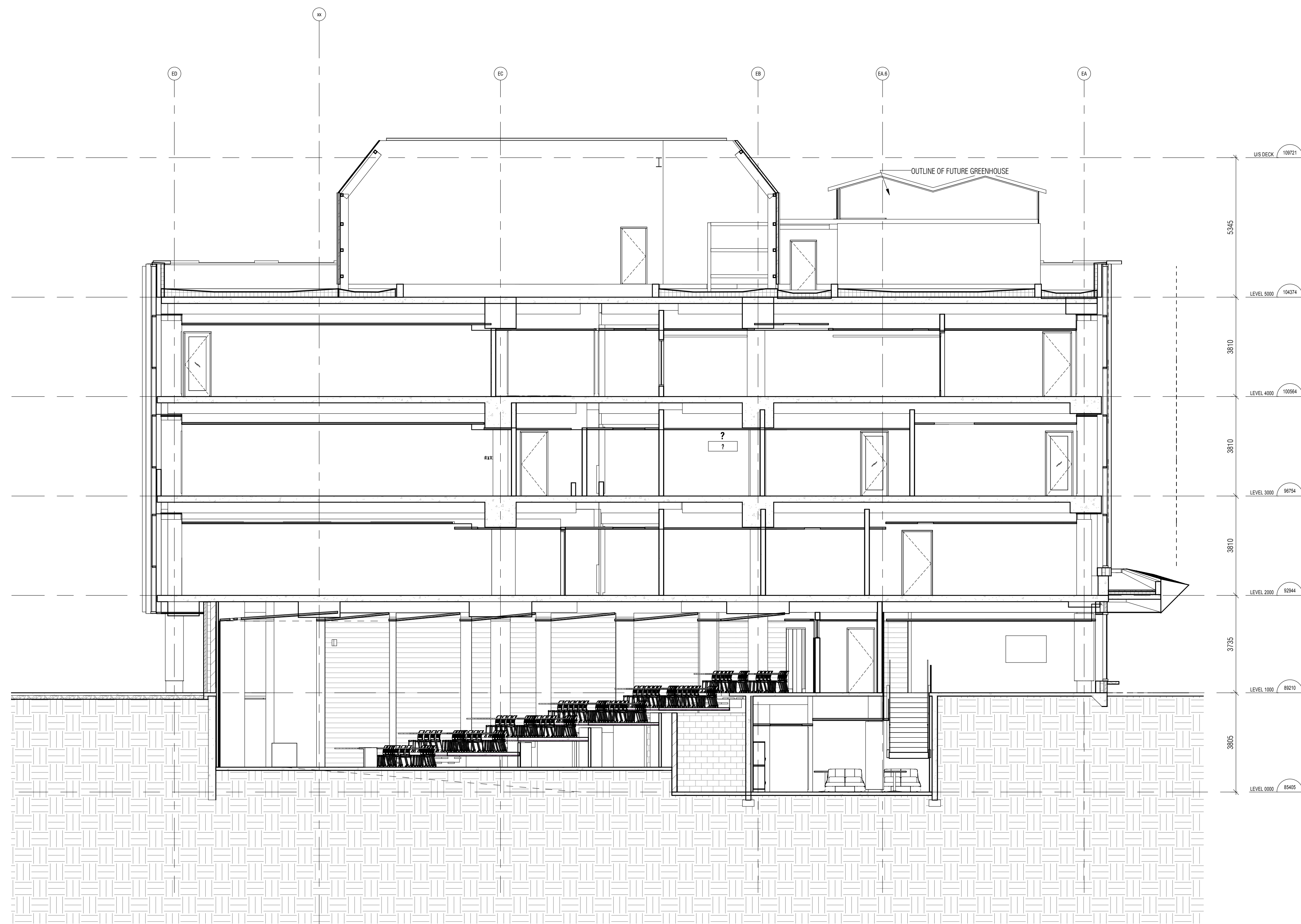
6270 University Blvd, Vancouver, BC

BUILDING ELEVATIONS - EAST WING

Scale: 1:100
 Project No: 1420
 Date: April, 2016

A301

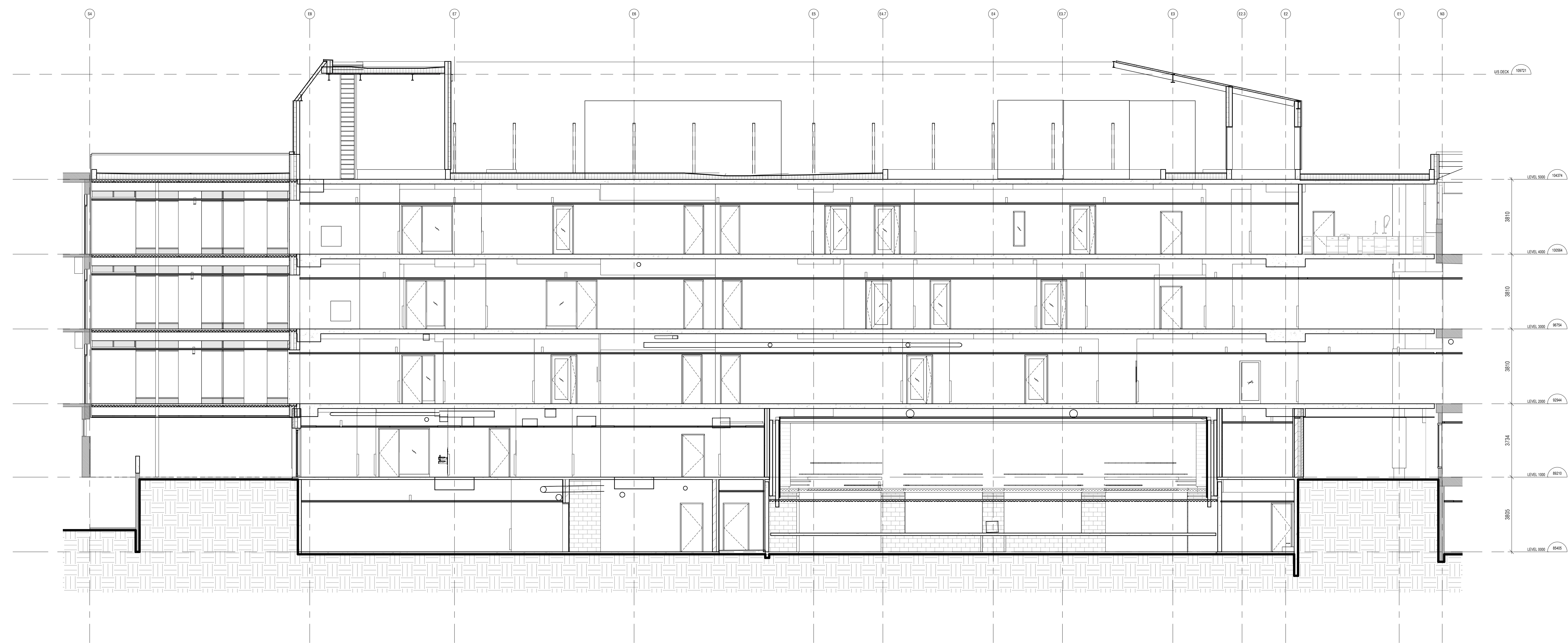
4/27/2016 4:35:10 PM C:\Users\jgoburn\OneDrive\1186111861\1186111861\Building_09.dwg



1 EAST WING - EAST/WEST SECTION LOOKING SOUTH 1
A401 1:100

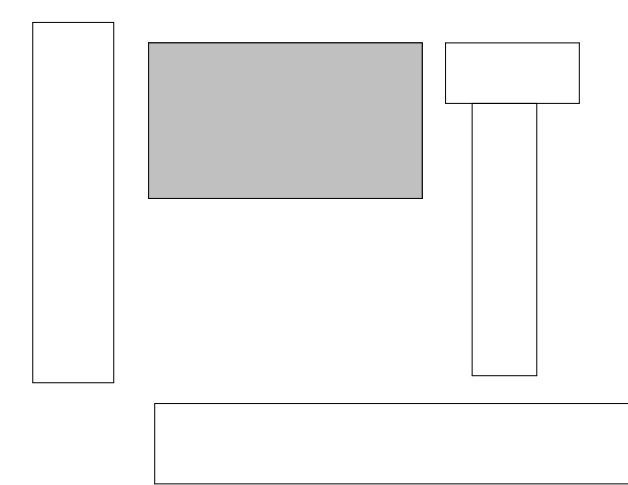


2 EAST WING - EAST/WEST SECTION LOOKING SOUTH 2
A401 1:100



3 EAST WING-NORTH/SOUTH SECTION 1
A401 1:100

CONTRACTOR MUST CHECK & VERIFY ALL DIMENSIONS ON THE JOB.
DO NOT SCALE DRAWINGS.
ALL DIMENSIONS, SPECIFICATIONS AND RELATED DOCUMENTS ARE THE COPYRIGHT PROPERTY OF THE ARCHITECT. THEY MUST BE REPRODUCED FROM ORIGINAL SOURCE FOR ALL REVISIONS, SPECIFICATIONS AND RELATED DOCUMENTS IN PART OR IN WHOLE IS FORBIDDEN WITHOUT THE WRITTEN PERMISSION OF THE ARCHITECT.
THIS DRAWING IS NOT TO BE USED FOR CONSTRUCTION UNLESS ISSUED BY THE ARCHITECT.



NOT FOR CONSTRUCTION

ISSUED

No.	Date	Description
2	2015 11 06	ISSUED FOR INCLUSION IN A/E STATEMENT OF REQUIREMENTS
5	2015 12 03	ISSUED FOR DEVELOPMENT PERMIT
9	2016 03 24	ISSUED FOR INTERIM COSTING
14	2016 04 29	RE-ISSUED FOR DEVELOPMENT PERMIT

C:\Users\gschmitt\OneDrive\10821186\1186\1186_LL_Bldgng_gpr.dwg

4/27/2016 4:33:38 PM

Diamond Schmitt Architects
184 Adelaide Street West, Suite 300, Toronto, Canada M5H 1B7
Tel: 416 862 8800 Fax: 416 862 5508 info@dsai.ca www.dsai.ca

In Collaboration With:
HDR | CEI Architecture Associates, Inc.
500 - 1300 West Georgia Street, Vancouver, British Columbia, Canada V6G 2Z9
Tel: 604 687 1168 Fax: 604 687 2288 www.ceiarchitects.com

UBC Undergrad Life Sciences Teaching Labs

6270 University Blvd, Vancouver, BC

BUILDING SECTIONS - EAST WING

Scale: 1:100
Project No: 1420
Date: April, 2016

A401