

TRIUMF - IAMI CYCLOTRON

4004 WESBROOK MALL, VANCOUVER, BC, CANADA, V6T 2A3

MAIN BUILDING PACKAGE

DESIGN PACKAGE NO.3

DRAWING LIST - CIVIL	
NO.	NAME
17840 (C-00)	COVER AND DRAWING INDEX
17841 (C-01)	LEGEND AND NOTES
17842 (C-03)	GRADING AND DRAINAGE PLAN
17843 (C-04)	STORM WATER MANAGEMENT PLAN
17844 (C-05)	WATER, STORM AND SANITARY SERVICE CONNECTIONS
17850 (S-01)	SURVEY PLAN
17851 (S-02)	SURVEY PLAN
17852 (S-03)	SURVEY CONTROL POINTS

DRAWING LIST - ARCHITECTURAL	
NO.	NAME
17820	TITLE PAGE
17821	GENERAL NOTES AND TYPICAL DETAILS
17822	ASSEMBLIES (EXTERIOR)
17823	ASSEMBLIES (INTERIOR)
17890	SITE PLAN
17899	LIFE SAFETY SITE PLAN
17894	LIFE SAFETY PLAN
17999	LIFE SAFETY SECTIONS
18000	B2 LEVEL
18001	B1 LEVEL
18002	GROUND LEVEL
18003	L1 LEVEL
18004	L2 LEVEL
18005	R1 ROOF
18006	R2 ROOF
18040	LABORATORY NOTES, SYMBOLS AND CASEWORK LEGENDS
18041	EQUIPMENT SCHEDULE AND FIXTURE NOTES
18042	LABORATORY PLAN - B2 LEVEL
18043	LABORATORY PLAN - GROUND LEVEL PART 1
18044	LABORATORY PLAN - GROUND LEVEL PART 2
18045	LABORATORY PLAN - L1 - INTERSTITIAL
18070	REFLECTED CEILING PLAN - LOWER BASEMENT LEVEL - B2
18071	REFLECTED CEILING PLAN - UPPER BASEMENT LEVEL - B1
18072	REFLECTED CEILING PLAN - GROUND FLOOR
18073	REFLECTED CEILING PLAN - L1 LEVEL
18074	REFLECTED CEILING PLAN - L2 LEVEL
18075	REFLECTED CEILING PLAN - MECHANICAL PENTHOUSE
18080	ENLARGED FLOOR AND REFLECTED CEILING PLANS - LOBBY AREA
18081	ENLARGED FLOOR AND REFLECTED CEILING PLANS - CONTROL ROOM
18082	ENLARGED FLOOR PLAN - CYCLOTRON
18090	ELEVATIONS - NORTH AND WEST
18091	ELEVATIONS - EAST AND SOUTH
18110	SECTIONS
18111	SECTIONS
18120	WALL SECTIONS
18121	WALL SECTIONS
18122	WALL SECTIONS
18140	BUILDING ENVELOPE DETAILS
18141	BUILDING ENVELOPE DETAILS
18142	BUILDING ENVELOPE DETAILS
18143	BUILDING ENVELOPE DETAILS
18144	BUILDING ENVELOPE DETAILS
18180	ELEVATOR AND SHAFT - PLAN AND SECTIONS
18181	SHAFT - PLAN AND SECTIONS
18182	SHAFT - PLAN AND SECTIONS
18180	VERTICAL CIRCULATION PLANS AND SECTIONS - STAR 1 (WEST STAIR)
18181	VERTICAL CIRCULATION PLANS AND SECTIONS - STAR 2 (EAST STAIR)
18182	VERTICAL CIRCULATION - DETAILS
18183	VERTICAL CIRCULATION - DETAILS
18184	EXTERIOR CIRCULATION
18200	CYCLOTRON VAULT SECTIONS
18201	CYCLOTRON VAULT SECTIONS
18202	CYCLOTRON VAULT SECTIONS
18203	CYCLOTRON VAULT SECTIONS
18210	INTERIOR DETAILS
18230	DOORS, DOOR FRAMES AND GLASS PARTITIONS
18240	ROOM FINISH SCHEDULE

DRAWING LIST - STRUCTURAL	
NO.	NAME
18850	COVER SHEET
18851	GENERAL NOTES - SHEET 1
18852	GENERAL NOTES - SHEET 2
18853	TYPICAL DETAILS - SHEET 1
18854	TYPICAL DETAILS - SHEET 2
18861	LEVEL B2 PLAN
18863	LEVEL B1 PLAN
18864	LEVEL B2 AND B1 LOADING PLAN
18865	LEVEL GROUND PLAN
18867	LEVEL L1 INTERSTITIAL PLAN
18868	LEVEL GROUND AND L1 INTERSTITIAL LOADING PLAN
18869	LEVEL 2 - MECH OFFICE PLAN
18871	LEVEL R1 - LOW ROOF PLAN
18872	LEVEL R2 - HIGH ROOF PLAN
18873	LEVEL MECH OFFICE, R1 AND R2 - LOW ROOF AND HIGH ROOF LOADING PLAN
18881	BUILDING ELEVATION
18882	BUILDING ELEVATION
18883	BUILDING ELEVATION
18884	BUILDING ELEVATION
18885	BUILDING ELEVATION
18901	CONCRETE SECTIONS AND DETAILS - SHEET 1
18902	CONCRETE SECTIONS AND DETAILS - SHEET 2
18903	CONCRETE SECTIONS AND DETAILS - SHEET 3
18904	CONCRETE SECTIONS AND DETAILS - SHEET 4
18905	CONCRETE SECTIONS AND DETAILS - SHEET 5
18911	STEEL SECTIONS AND DETAILS - SHEET 1
18912	STEEL SECTIONS AND DETAILS - SHEET 2
18931	SHEARWALL KEYPLAN CALLOUTS
18932	SHEARWALL ELEVATIONS - SHEET 1
18933	SHEARWALL ELEVATIONS - SHEET 2
18934	SHEARWALL ELEVATIONS - SHEET 3
18935	SHEARWALL ELEVATIONS - SHEET 4
18936	SHEARWALL ELEVATIONS - SHEET 5
18941	BRACE BAY ELEVATION
18942	BRACE BAY DETAILS - SHEET 1

DRAWING LIST - MECHANICAL	
NO.	NAME
19410	SITE PLAN - MECHANICAL
19412	IAMI BUILDING - DOMESTIC WATER SCHEMATIC - MECHANICAL
19413	IAMI BUILDING - DRAINAGE SCHEMATIC - MECHANICAL
19414	IAMI BUILDING - FIRE PROTECTION SCHEMATIC - MECHANICAL
19415	IAMI BUILDING - SUPPLY AIRFLOW SCHEMATIC - MECHANICAL
19416	IAMI BUILDING - EXHAUST AIRFLOW SCHEMATIC - MECHANICAL
19419	IAMI BUILDING - STEAM SCHEMATIC - MECHANICAL
19420	IAMI BUILDING - HEATING AND COOLING PLANTS SCHEMATIC - MECHANICAL
19421	IAMI BUILDING - GAS SERVICE SCHEMATIC - MECHANICAL
19500	PLUMBING FOUNDATION PLAN - MECHANICAL
19501	PLUMBING PLAN B2 LEVEL
19502	PLUMBING PLAN B1 LEVEL
19503	PLUMBING PLAN GROUND LEVEL
19504	PLUMBING PLAN L1 LEVEL - MECHANICAL
19505	PLUMBING PLAN L2 LEVEL - MECHANICAL
19506	PLUMBING PLAN LOW ROOF LEVEL - MECHANICAL
19507	PLUMBING PLAN HIGH ROOF LEVEL - MECHANICAL
19600	FIRE SUPPRESSION PLAN B2 LEVEL - MECHANICAL
19601	FIRE SUPPRESSION PLAN B1 LEVEL - MECHANICAL
19602	FIRE SUPPRESSION PLAN GROUND LEVEL - MECHANICAL
19603	FIRE SUPPRESSION PLAN L1 LEVEL - MECHANICAL
19604	FIRE SUPPRESSION PLAN L2 LEVEL - MECHANICAL
19605	FIRE SUPPRESSION PLAN LOW ROOF LEVEL - MECHANICAL
19606	FIRE SUPPRESSION PLAN HIGH ROOF LEVEL - MECHANICAL
19700	HVAC PLAN B2 LEVEL - MECHANICAL
19701	HVAC PLAN B1 LEVEL - MECHANICAL
19702	HVAC PLAN GROUND LEVEL - MECHANICAL
19703	HVAC PLAN L1 LEVEL
19704	HVAC PLAN L2 LEVEL
19705	HVAC PLAN LOW ROOF LEVEL - MECHANICAL
19706	HVAC PLAN HIGH ROOF LEVEL - MECHANICAL
19707	HVAC PLAN CYCLOTRON GASES AND WATER COOLING - MECHANICAL
19708	PRESSURIZATION FLOOR PLAN - B2 LEVEL
19709	PRESSURIZATION FLOOR PLAN - GROUND LEVEL
19802	PLUMBING DETAILS 1 - MECHANICAL
19811	HVAC & HYDRONIC SECTION VIEWS

DRAWING LIST - ELECTRICAL	
NO.	NAME
29250	Cover Sheet-Symbol Schedule
29251	Key Plan
29252	
29254	Site Details
29300	B2 Lighting
29301	B1 Lighting
29302	Ground Level Lighting
29303	L1 Mechanical Lighting
29304	L2 Mechanical/Office Lighting
29305	Low RoofMech. Penthouse Lighting
29306	High Roof
29310	Luminaire Schedule
29311	Lighting Controls Details
29400	B2 Power and Communications
29401	B1 Power and Communications
29402	Ground Level Power and Communications
29403	L1 Mechanical Power and Communications
29404	L2 Mechanical/Office Power and Communications
29405	Low Roof Mech. Penthouse Power and Communications
29406	High Roof Power and Communications
29407	Room Layout Details
29410	Single Line Diagram
29411	Mechanical and Equipment Schedules
29412	Electrical Details 1
29413	Electrical Details 2
29500	B2 Fire Alarm and Security
29501	B1 Fire Alarm and Security
29502	Ground Level Fire Alarm and Security
29503	L1 Mechanical Fire Alarm and Security
29504	L2 Mechanical/Office Fire Alarm and Security
29505	Low RoofMech. Penthouse Fire Alarm and Security
29506	High Roof Fire Alarm and Security
29510	Fire Alarm and Grounding System Riser Diagrams
29511	Communications and Security Systems Conduit Riser Diagrams
29600	Panel Schedules 1
29601	Panel Schedules 2

DRAWING LIST - LANDSCAPE	
NO.	NAME
17900 (L100)	LANDSCAPE ARCHITECTURE COVER
17901 (L101)	LANDSCAPE ARCHITECTURE NOTES
17902 (L102)	TREE PROTECTION & TREE REMOVAL PLAN (TREE SURVEY)
17903 (L103)	SITE PLAN
17904 (L104)	PLAN ENLARGEMENT 1
17905 (L105)	PLAN ENLARGEMENT 2
17906 (L106)	SECTIONS 1
17907 (L107)	SECTIONS 2
17908 (L108)	PLANTING PLAN 1
17909 (L109)	PLANTING PLAN 2
17910 (L110)	DETAILS 1
17911 (L111)	DETAILS 2



ARCHITECTURAL . LABORATORY

STRUCTURAL

MECHANICAL

ARCHITECTURE | 49

BUSH, BOHLMAN & PARTNERS LLP
consulting structural engineers

AME Group
consulting mechanical engineers

ELECTRICAL

CIVIL

LANDSCAPE, SUSTAINABILITY, ENVIRONMENTAL

CODE



McElhanney



JENSEN HUGHES
Advancing the Science of Safety

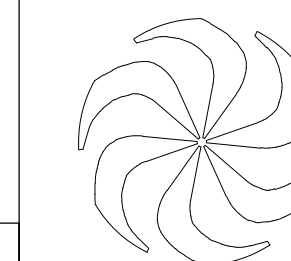
DISCLAIMER: THIS DRAWING AND DESIGN IS COPYRIGHT PROTECTED WHICH SHALL NOT BE REPRODUCED OR REVISED WITHOUT WRITTEN PERMISSION BY ARCHITECTURE 49. THE CONTRACTOR SHALL CHECK AND VERIFY ALL DIMENSIONS AND UTILITY LOCATIONS AND REPORT ALL ERRORS AND OMISSIONS PRIOR TO COMMENCING WORK. THIS DRAWING IS NOT TO BE SCALED.

FOR REFERENCE TO EXCAVATION TENDER PACKAGE ONLY

ARCHITECTURE | 49

270-1075 West Georgia
Vancouver, BC V6E 3C9, Canada
+1 604.736.5252 | WWW.ARCHITECTURE49.COM

SEAL:

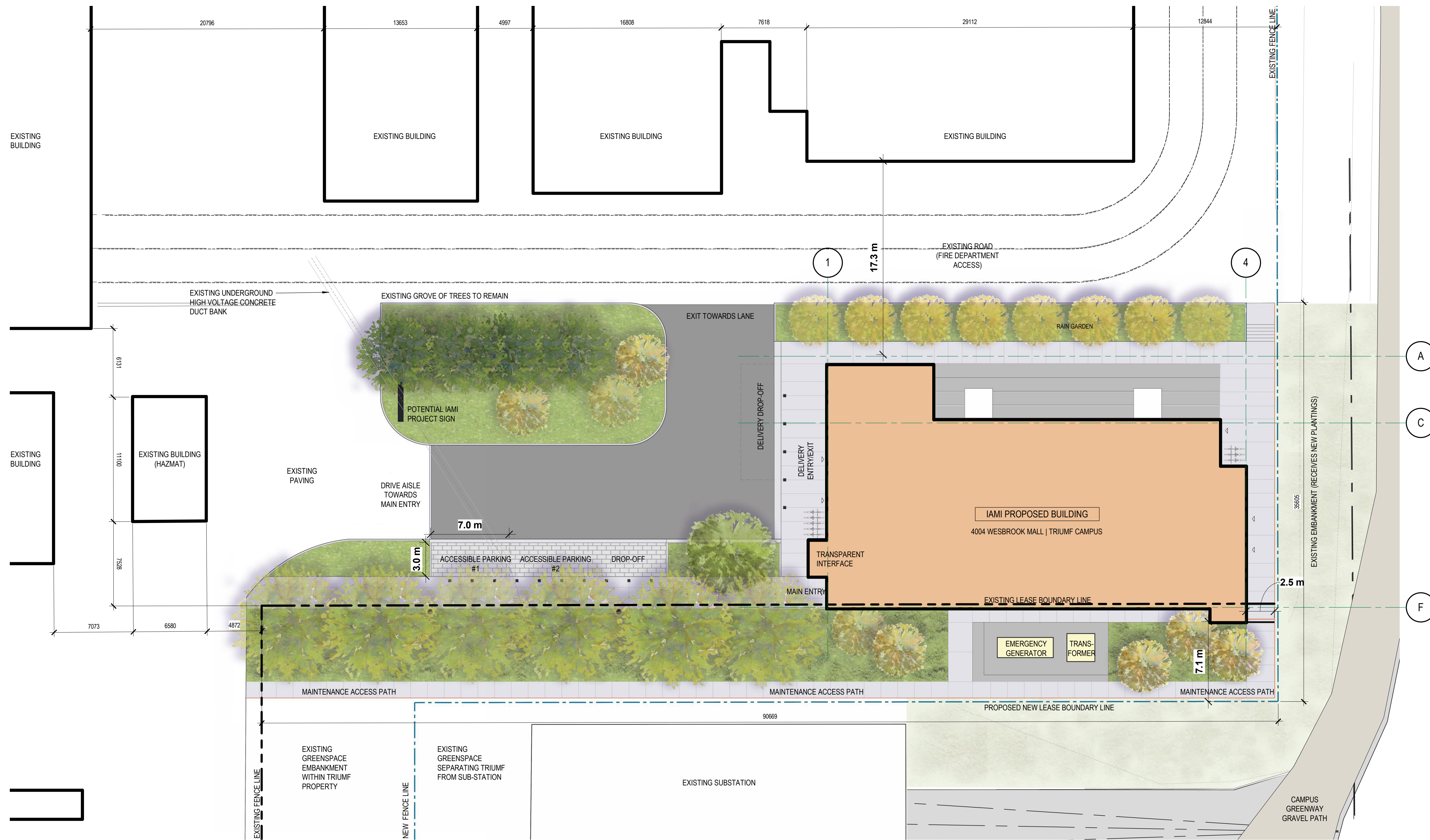
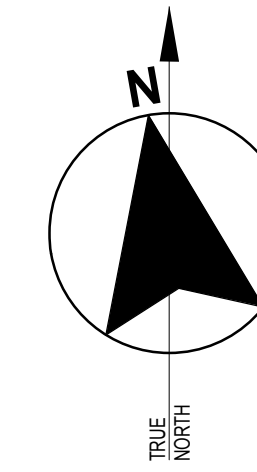


REV	DATE	REVISION DESCRIPTION	BY
F	2019-01-17	Issued for 70% CD - For Reference to Excavation tender package only	
E	2019-01-16	Issued for 60% CD	
D	2019-01-10	Issued for 50% CD	
C	2018-12-20	Issued for 40% CD	
B	2018-11-23	100% Design Development	
A	2018-10-17	100% Design Development For Review	

TRIUMF Canada's National Laboratory for Particle and Nuclear Physics 4004 Westbrook Mall | Vancouver BC | Canada V6T-2A3

DESIGNED	SB	INSTITUTE FOR ADVANCED MEDICAL ISOTOPES (IAM)	
DRAWN	SA	TITLE PAGE	
CHECKED	SB	ARCHITECTURAL	
WR #		PLOT SCALE	JOB NO.
APPROVED		DATE	DWG NO.
		2018-11-27	189-00175-00
			17820
			REV. F

BM 3001788-00175-00 - IAMI TRIUMF - R18 TRIUMF - IAMI ARCH 49 18.02 1/10/2019 3:09:59 PM



1 SITE PLAN
1:200

PROJECT STATISTICS

PROJECT NAME	TRIUMF IAMI - INSTITUTE FOR ADVANCED MEDICAL ISOTOPES	
PROJECT ADDRESS	4004 WEBBROOK MALL, VANCOUVER, BC V6T 2A3	
LEGAL DESCRIPTION	Portion of DISTRICT LOT 6494 GROUP 1 NEW WESTMINSTER DISTRICT EXCEPT PARTS IN PLANS 11345, 18645, 21966, BCP28848, BCP28848, BCP28848, 20570, BCP30252 AND BCP45908	
ZONING	EXISTING / REQUIRED	PROVIDED
LAND USE PLAN	UBC VANCOUVER CAMPUS PLAN	FOREST EDGE...
GENERALIZED ACADEMIC COMMUNITY	ACADEMIC (SCHEDULE A - LAND USE PLAN)	
CAMPUS GREENWAYS IN PROXIMITY	SOUTH CAMPUS RESEARCH DISTRICT	
	SOUTH EAST GREENWAY	EAST SITE PROPERTY LINE BORDERS WITH SOUTH EAST GREENWAY
STORIES	3 STOREYS OR TALLER	3 STOREYS
MAXIMUM BUILDING HEIGHT	53m MAX (MODERATE & TALL BLDGS PREFERRED, 28-53m)	19m
SITE AREA	N/A	N/A
SITE COVERAGE	N/A	N/A
FLOOR SPACE RATIO	N/A	N/A
FLOOR AREA (SQ.M)		
	BASEMENT 2	746
	BASEMENT 1	746
	GROUND	600
	UPPER LEVEL 1	620
	UPPER LEVEL 2	520
		TOTAL: 3392 SQ.M (36,500 SF)
STAFF	N/A	54 PERSONS AT IAMI BUILDING (40 REGULAR HRS, 14 OVERNIGHT HRS)
PARKING STALLS (NUMBER) ON SITE	320 (PAID PARKING)	2 (ACCESSIBLE PARKING STALLS)
LOADING STALLS (NUMBER)	N/A	1
BICYCLE PARKING NUMBER (INSTITUTIONAL)	3-5 CLASS A	3-5 CLASS A PROVIDED AT TRIUMF TOTAL LONGTERM STALLS
	28 CLASS B	28 CLASS B PROVIDED IN TRIUMF TOTAL VISITOR PARKING STALLS (6 STALLS PROVIDED AT IAMI BUILDING ENTRANCE)
BUILDING SETBACKS (m)		
FRONT YARD (NORTH)	N/A	18.3m
REAR YARD (SOUTH)	N/A	7.7m
SIDE YARD (EAST)	N/A	2.7m
GARBAGE AND RECYCLING ROOM	JANITORIAL STAFF COLLECTS GARBAGE AND RECYCLABLES FROM ALL BUILDINGS AND BRINGS TO AN EXISTING, CENTRALIZED GARBAGE AND RECYCLING ROOM LOCATED ON THE TRIUMF GROUNDS.	

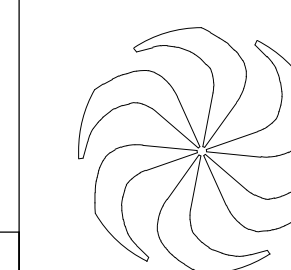
DISCLAIMER: THIS DRAWING AND DESIGN IS COPYRIGHT PROTECTED WHICH SHALL NOT BE REPRODUCED OR REVISED WITHOUT WRITTEN PERMISSION BY ARCHITECTURE 49. THE CONTRACTOR SHALL CHECK AND VERIFY ALL DIMENSIONS AND UTILITY LOCATIONS AND REPORT ALL ERRORS AND OMISSIONS PRIOR TO COMMENCING WORK. THIS DRAWING IS NOT TO BE SCALED.

FOR REFERENCE TO EXCAVATION TENDER PACKAGE ONLY

ARCHITECTURE 49

270-1075 West Georgia
Vancouver, BC V6E 3C9, Canada
+1 604.736.5329 | WWW.ARCHITECTURE49.COM

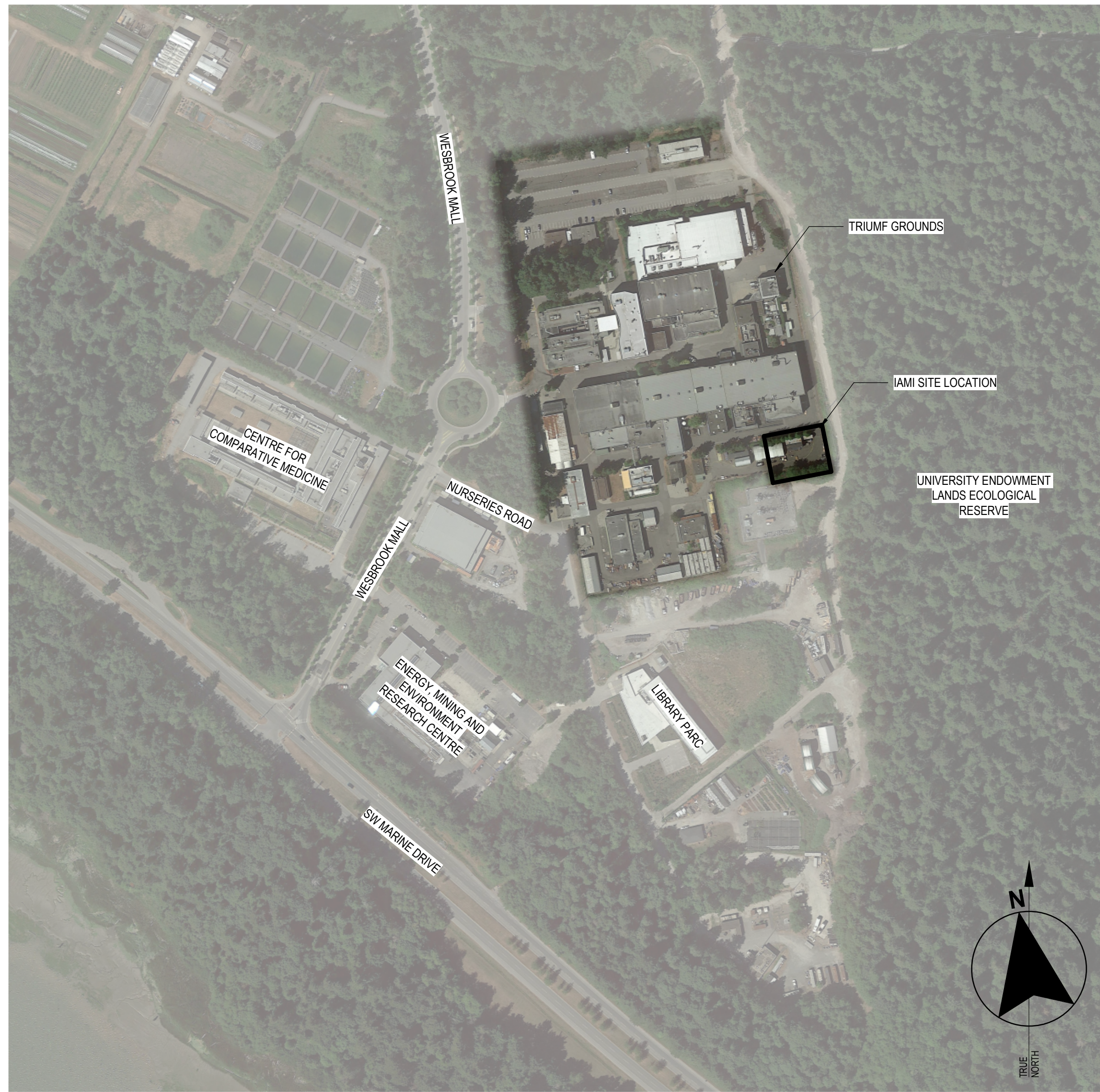
SEAL:



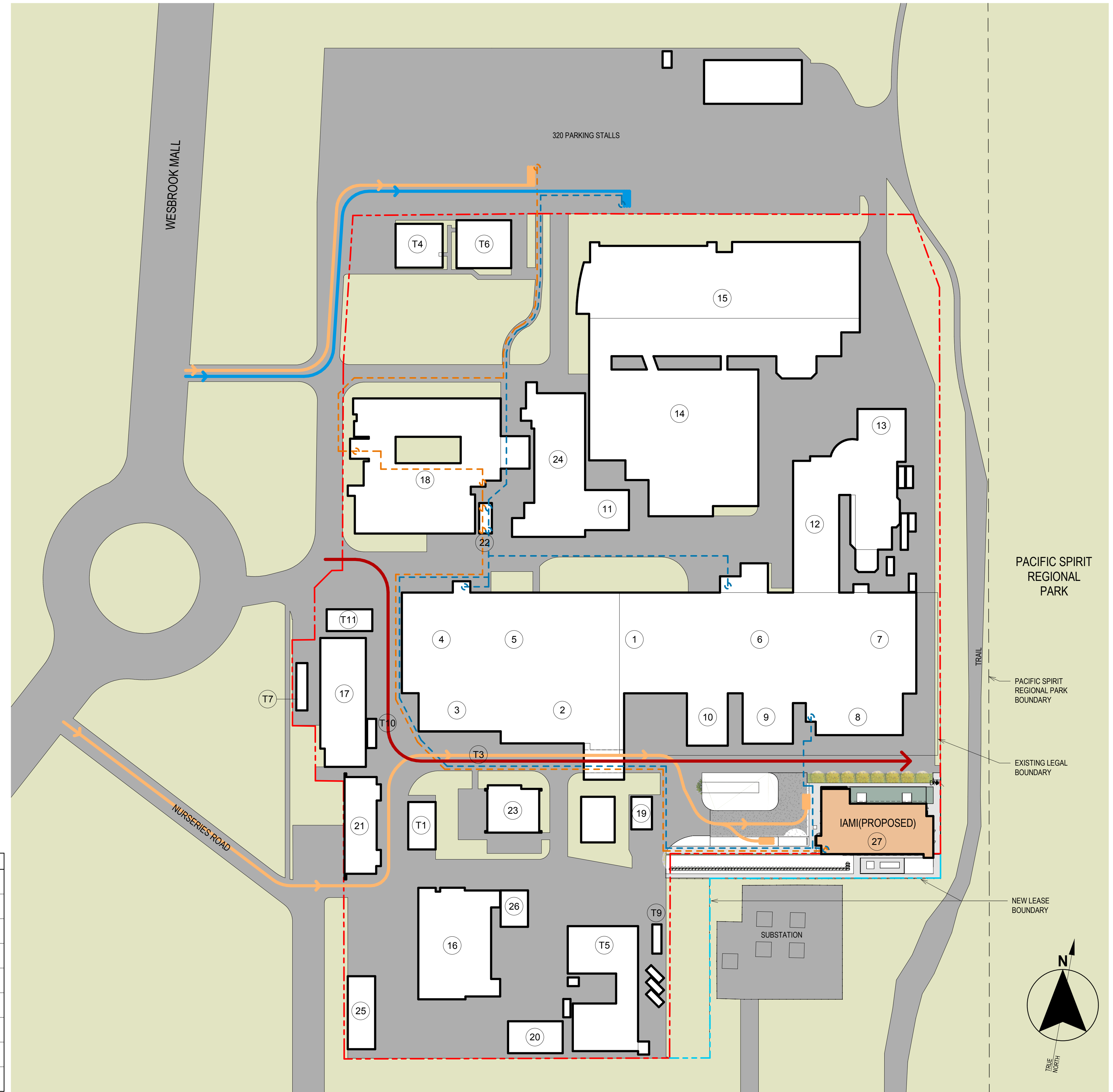
REV	DATE	REVISION DESCRIPTION	BY
F	2018-10-17	100% Design Development For Review	
A	2018-11-23	100% Design Development	
C	2018-12-20	Issued for 40% CD	
D	2019-01-10	Issued for 50% CD	
E	2019-01-15	Issued for 60% CD	
F	2019-01-17	Issued for 70% CD - For Reference to Excavation tender package only	

TRIUMF Canada's National Laboratory for Particle and Nuclear Physics 4004 Westbrook Mall | Vancouver BC | Canada V6T-2A3

DESIGNED	SB	INSTITUTE FOR ADVANCED MEDICAL ISOTOPES (IAM)							
DRAWN	SA	SITE PLAN							
CHECKED	SB	ARCHITECTURAL							
WR #		PLOT SCALE	1:200	JOB NO.	189-00175-00	DWG NO.	17980	REV.	F
APPROVED		DATE	2018-11-27						



2 UBC SOUTH CAMPUS CONTEXT PLAN
1:1



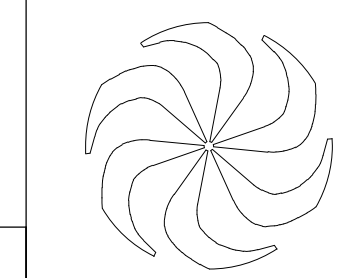
1 TRIUMF SITE CONTEXT PLAN
1899 1:750

CONTEXT PLAN LEGEND	
	EXISTING LEGAL BOUNDARY
	NEW LEASE BOUNDARY
	PAVING
	SOFTSCAPE AND LANDSCAPING
	BUILDING FOOT PRINT
	BUILDING TAG
	STAFF TRAFFIC - VEHICLE PEDESTRIAN
	VISITOR TRAFFIC - VEHICLE PEDESTRIAN
	FIRETRUCK ACCESS

DISCLAIMER: THIS DRAWING AND DESIGN IS COPYRIGHT PROTECTED WHICH SHALL NOT BE USED, REPRODUCED OR REVERSED WITHOUT WRITTEN PERMISSION BY ARCHITECTURE 49. THE CONTRACTOR SHALL CHECK AND VERIFY ALL DIMENSIONS AND UTILITY LOCATIONS AND REPORT ALL ERRORS AND OMISSIONS PRIOR TO COMMENCING WORK. THIS DRAWING IS NOT TO BE SCALED.

FOR REFERENCE TO EXCAVATION TENDER PACKAGE ONLY

ARCHITECTURE 49
270-1075 West Georgia
Vancouver, BC V6E 3C9, Canada
+1 604.736.5329 | WWW.ARCHITECTURE49.COM



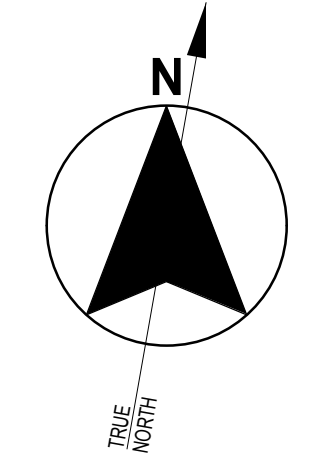
DESIGNED SB
DRAWN SA
CHECKED SB
WR #
APPROVED

REV	DATE	REVISION DESCRIPTION	BY
F	2019-01-17	Issued for 70% CD - For Reference to Excavation tender package only	
E	2019-01-15	Issued for 60% CD	
D	2019-01-10	Issued for 50% CD	
C	2018-12-20	Issued for 40% CD	
B	2018-11-23	100% Design Development	
A	2018-10-17	100% Design Development For Review	

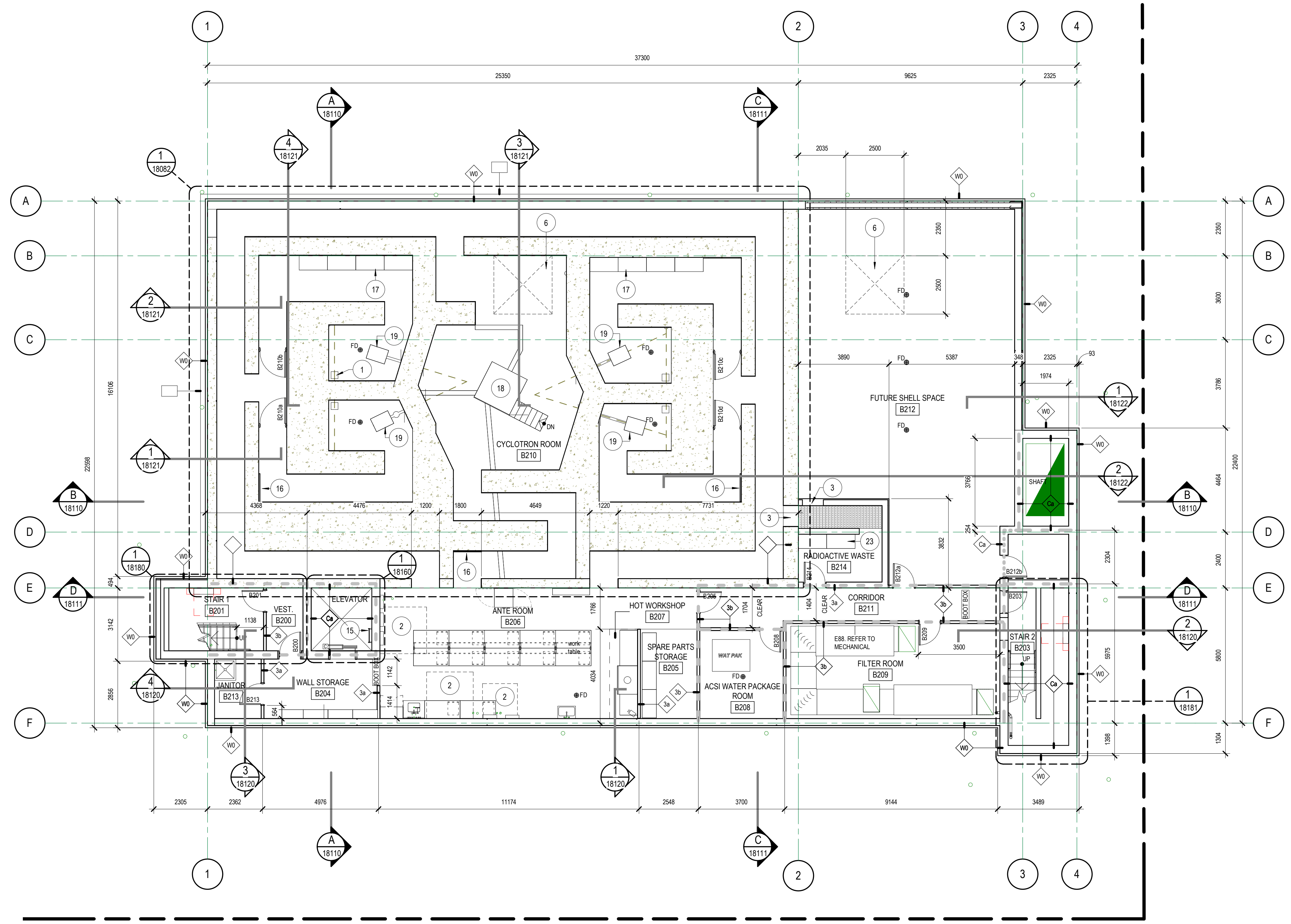
TRIUMF Canada's National Laboratory for Particle and Nuclear Physics 4004 Westbrook Mall | Vancouver BC | Canada V6T-2A3

INSTITUTE FOR ADVANCED MEDICAL ISOTOPES (IAMI)
LIFE SAFETY SITE PLAN
ARCHITECTURAL

PLOT SCALE As indicated JOB NO. 189-00175-00 DWG NO. **17989** REV. **F**
DATE 2018-11-27



- GENERAL NOTES
- REFERENCE 1:50 SCALE PLANS FOR ADDITIONAL INFORMATION NOT SHOWN ON THIS PLAN.
 - REFERENCE SERIES 18042 TO 18045 FOR LABORATORY LAYOUTS.
 - REFERENCE SERIES 18240 TO 1824X FOR ROOM FINISH SCHEDULE AND 1:50 SCALE FINISH PLAN SHEET FOR INFORMATION ON EXTENT OF WALL AND FLOOR FINISHES AND PROTECTION, SIGNAGE ETC.
 - REFERENCE SHEET DWG 17821 FOR PARTITION TYPES AND DETAILS. ALL PARTITIONS ARE TO BE P1 UNLESS NOTED OTHERWISE.
 - SEE SHEET 18230 FOR DOOR SCHEDULE, DOOR FRAME, DOOR TYPE AND INTERIOR GLASS PARTITION ELEVATIONS AND REFER SPEC 08 8000 FOR DOOR HARDWARE.
 - SEE SHEET SERIES 18080 TO 18089 FOR ENLARGED ROOM LAYOUTS.
 - SEE SHEET SERIES 19160 TO 19161 FOR STAIRCASE AND VERTICAL CIRCULATION LAYOUTS AND SECTIONS.
 - REFER TO SHEETS 17989 TO 17999 FOR LIFE SAFETY PLANS AND SECTIONS SHOWING FIRE RATINGS OF WALLS.
 - ALL DIMENSIONS ARE TO THE FACE OF PAINTED SURFACE UNLESS NOTED OTHERWISE.
 - OVERALL BUILDING DIMENSIONS ARE NOMINAL DIMENSIONS AND FOR ESTIMATION PURPOSES ONLY.



FLOOR PLAN LEGEND

- FUTURE CONSTRUCTION: FURNITURE, BUILDING ELEMENTS, FIXTURES, ETC.
- FLOOR DRAIN
- CARD READER
- KEY PAD
- REQUEST TO EXIT SENSOR
- INTRUSION MOTION DETECTOR WALL MOUNTED
- INTRUSION ALARM HORN
- INTRUSION ALARM KEY PAD
- INTRUSION ALARM CONTROL PANEL

Keynote Legend

KEY NO.	DESCRIPTION
1	WASTE HATCH, TYPICAL AT EACH TARGET
2	SUMP COVER
3	WASTE BIN PASS THROUGH ONTO ROLLERS. TR-19 PASS THROUGH BLOCKOUT FOR FUTURE USE.
6	ACCESS HATCH ABOVE
15	ELEVATOR PIT LADDER
16	POLYETHYLENE SHIELDING PANEL
17	RADIOACTIVE STORAGE BUNKERS (OPTIONAL)
18	CYCLOTRON EQUIPMENT
19	CYCLOTRON TARGET STATION
23	STORAGE RACKING

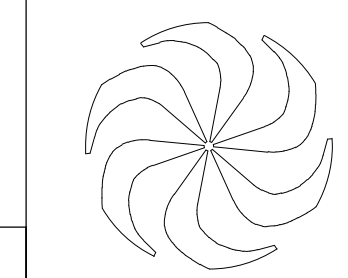
1 B2 LEVEL
18110 1:100

DISCLAIMER: THIS DRAWING AND DESIGN IS COPYRIGHT PROTECTED WHICH SHALL NOT BE REPRODUCED OR REVISED WITHOUT WRITTEN PERMISSION BY ARCHITECTURE 49. THE CONTRACTOR SHALL CHECK AND VERIFY ALL DIMENSIONS AND UTILITY LOCATIONS AND REPORT ALL ERRORS AND OMISSIONS PRIOR TO COMMENCING WORK. THIS DRAWING IS NOT TO BE SCALED.

FOR REFERENCE TO EXCAVATION TENDER PACKAGE ONLY

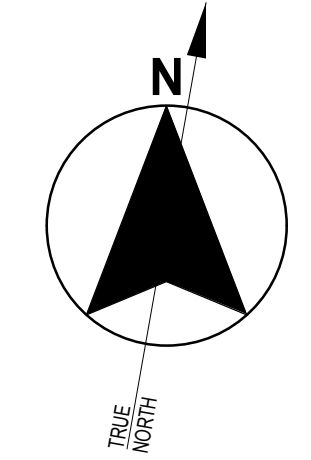
ARCHITECTURE 49

270-1075 West Georgia
Vancouver, BC V6E 3C9, Canada
+1 604.736.5329 | WWW.ARCHITECTURE49.COM

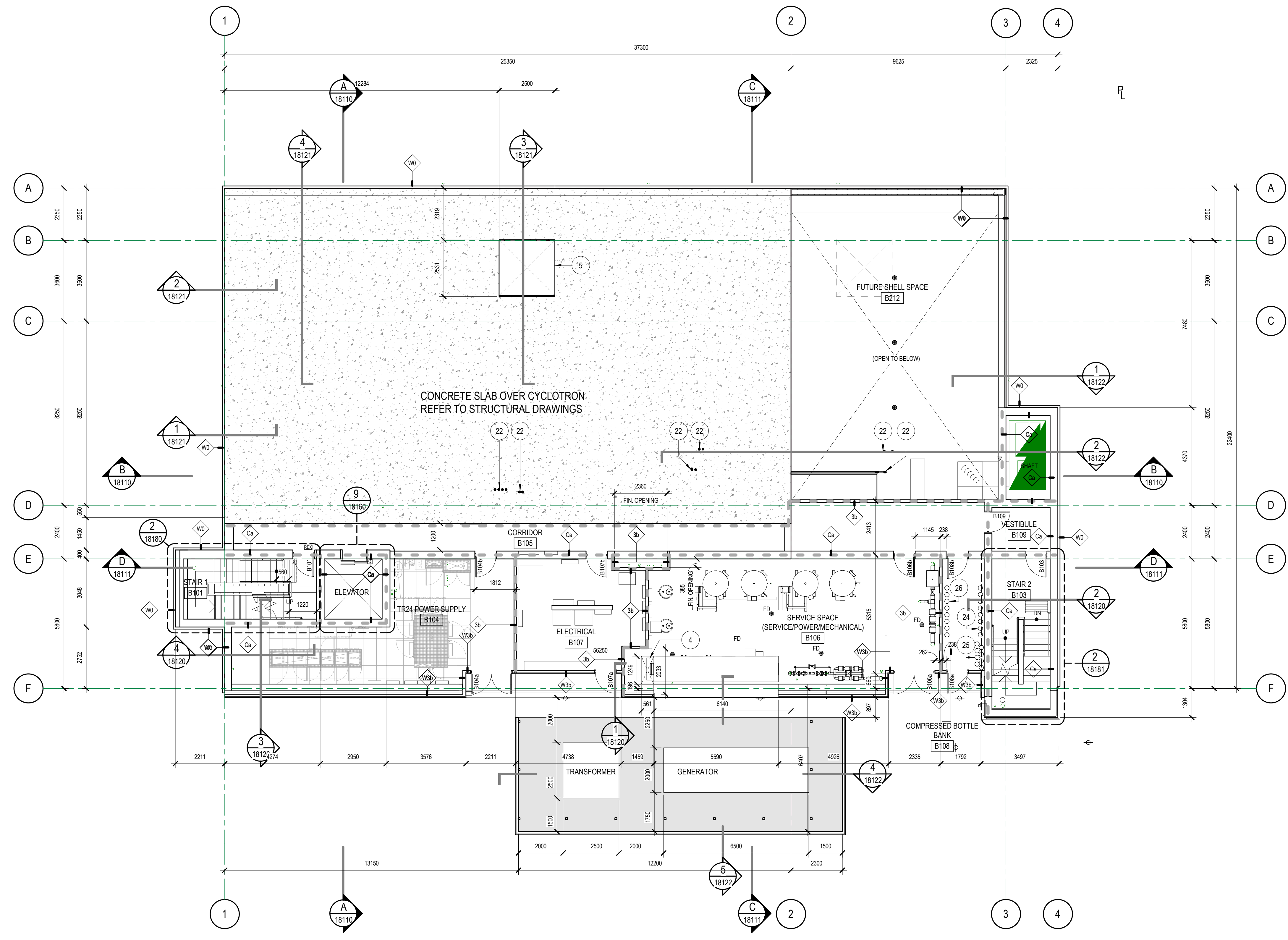


DESIGNED	SB
DRAWN	SA
CHECKED	SB
WR #	
APPROVED	

TRIUMF Canada's National Laboratory for Particle and Nuclear Physics 4004 Westbrook Mall Vancouver BC Canada V6T-2A3	
INSTITUTE FOR ADVANCED MEDICAL ISOTOPES (IAM) B2 LEVEL ARCHITECTURAL	
PLOT SCALE	As indicated
DATE	2018-11-27
JOB NO.	189-00175-00
DWG NO.	18000
REV.	G



- GENERAL NOTES
- REFERENCE 1:50 SCALE PLANS FOR ADDITIONAL INFORMATION NOT SHOWN ON THIS PLAN.
 - REFERENCE SERIES 18042 TO 18045 FOR LABORATORY LAYOUTS
 - REFERENCE SERIES 18240 TO 1824X FOR ROOM FINISH SCHEDULE AND 1:50 SCALE FINISH PLAN SHEET FOR INFORMATION ON EXTENT OF WALL AND FLOOR FINISHES AND PROTECTION, SIGNAGE ETC.
 - REFERENCE SHEET DWS 17821 FOR PARTITION TYPES AND DETAILS. ALL PARTITIONS ARE TO BE P1 UNLESS NOTED OTHERWISE.
 - SEE SHEET 18230 FOR DOOR SCHEDULE, DOOR FRAME, DOOR TYPE AND INTERIOR GLASS PARTITION ELEVATIONS AND REFER SPEC 08 8000 FOR DOOR HARDWARE.
 - SEE SHEET SERIES 18080 TO 18089 FOR ENLARGED ROOM LAYOUTS.
 - SEE SHEET SERIES 18160 TO 18181 FOR STAIRCASE AND VERTICAL CIRCULATION LAYOUTS AND SECTIONS.
 - REFER TO SHEETS 17985 TO 17993 FOR LIFE SAFETY PLANS AND SECTIONS SHOWING FIRE RATINGS OF WALLS.
 - ALL DIMENSIONS ARE TO THE FACE OF PAINTED SURFACE UNLESS NOTED OTHERWISE.
 - OVERALL BUILDING DIMENSIONS ARE NOMINAL DIMENSIONS AND FOR ESTIMATION PURPOSES ONLY.



- FLOOR PLAN LEGEND**
- FUTURE CONSTRUCTION: FURNITURE, BUILDING ELEMENTS, FIXTURES, ETC.
 - FD FLOOR DRAIN
 - C CARD READER
 - K KEY PAD
 - REX REQUEST TO EXIT SENSOR
 - MD INTRUSION MOTION DETECTOR WALL MOUNTED
 - H INTRUSION ALARM HORN
 - IAR INTRUSION ALARM KEY PAD
 - AB INTRUSION ALARM CONTROL PANEL

Keynote Legend

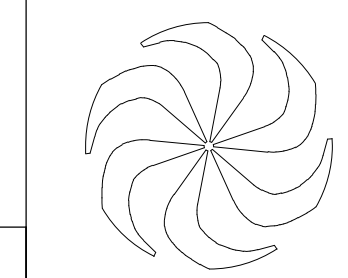
KEY NO.	DESCRIPTION
4	FLOOR OPENING
5	OPENING FOR CYCLOTRON ACCESS HATCH
22	RADIOACTIVE TRACER LINES TO HOTCELLS
24	BOTTLE STORAGE - IN USE
25	BOTTLE STORAGE - EMPTY
26	BOTTLE STORAGE - FULL

B1 LEVEL
1:100

DISCLAIMER: THIS DRAWING AND DESIGN IS COPYRIGHT PROTECTED WHICH SHALL NOT BE REPRODUCED OR REVERSED WITHOUT WRITTEN PERMISSION BY ARCHITECTURE 49. THE CONTRACTOR SHALL CHECK AND VERIFY ALL DIMENSIONS AND UTILITY LOCATIONS AND REPORT ALL ERRORS AND OMISSIONS PRIOR TO COMMENCING WORK. THIS DRAWING IS NOT TO BE SCALED.

FOR REFERENCE TO EXCAVATION TENDER PACKAGE ONLY

ARCHITECTURE 49
270-1075 West Georgia
Vancouver, BC V6E 3C9, Canada
+1 604.736.5329 | WWW.ARCHITECTURE49.COM



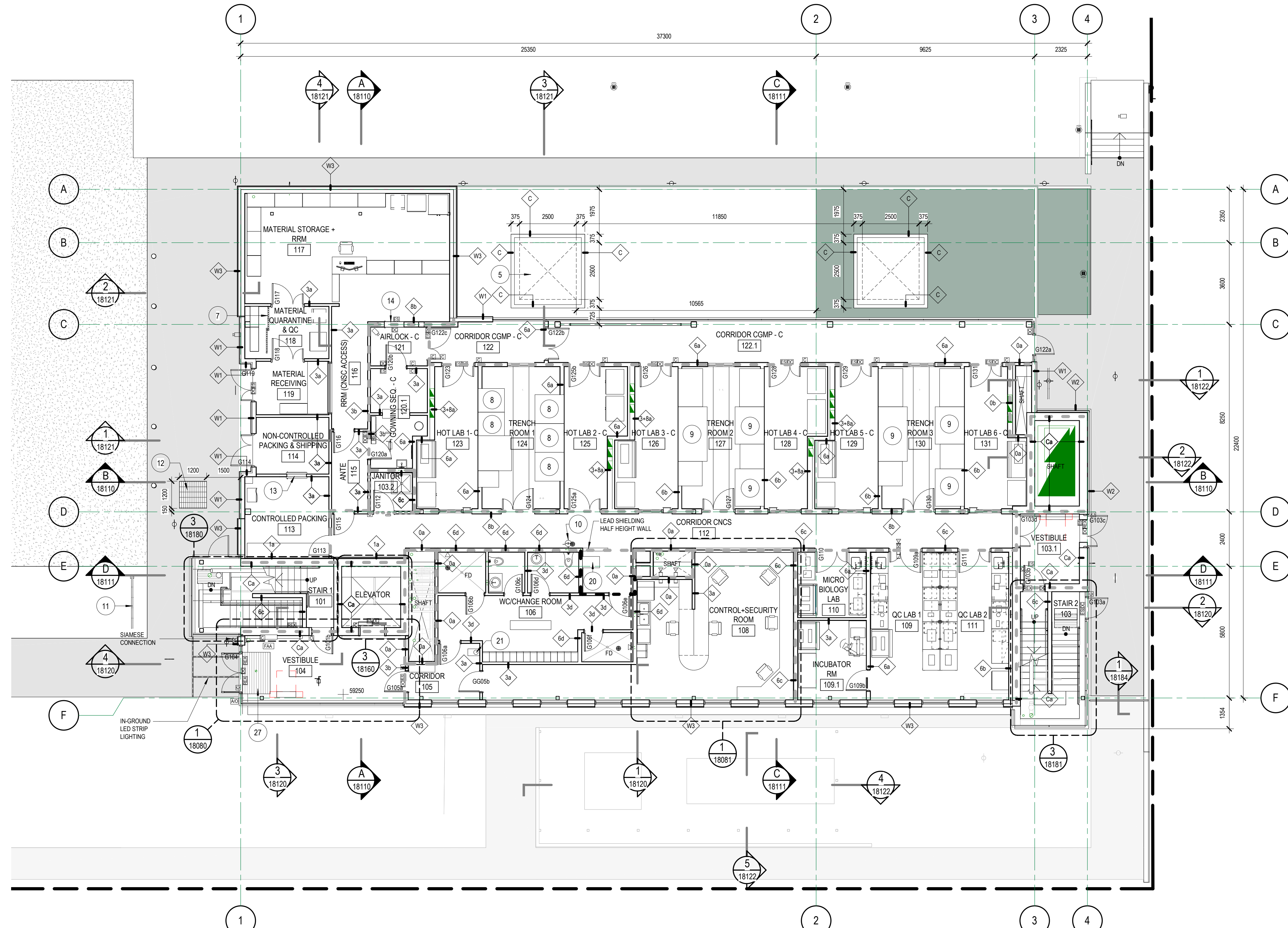
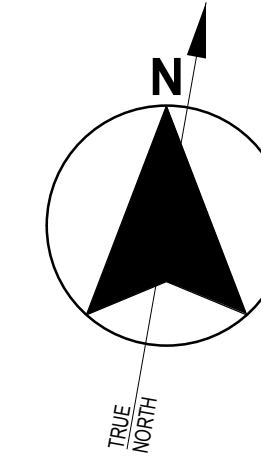
REV	DATE	REVISION DESCRIPTION	BY
G	2019-01-17	Issued for 70% CD - For Reference to Excavation tender package only	
F	2019-01-15	Issued for 60% CD	
E	2019-01-10	Issued for 50% CD	
D	2018-12-20	Issued for 40% CD	
C	2018-12-03	Issued for Development Permit	
B	2018-11-23	100% Design Development	

TRIUMF Canada's National Laboratory for Particle and Nuclear Physics 4004 Westbrook Mall | Vancouver BC | Canada V6T-2A3

DESIGNED	SB	INSTITUTE FOR ADVANCED MEDICAL ISOTOPES (IAM)
DRAWN	SA	B1 LEVEL
CHECKED	SB	ARCHITECTURAL
WR #		
APPROVED		
PLOT SCALE	As indicated	JOB NO. 189-00175-00
DATE	2018-11-27	DWG NO. 18001
		REV. G

GENERAL NOTES

1. REFERENCE 1:50 SCALE PLANS FOR ADDITIONAL INFORMATION NOT SHOWN ON THIS PLAN.
2. REFERENCE SERIES 18042 TO 18045 FOR LABORATORY LAYOUTS.
3. REFERENCE SERIES 18040 TO 18043 FOR ROOM FINISH SCHEDULE AND 1:50 SCALE FINISH PLAN SHEET FOR INFORMATION ON EXTENT OF WALL AND FLOOR FINISHES AND PROTECTION, SIGNAGE, ETC.
4. REFERENCE SHEET DWG 17821 FOR PARTITION TYPES AND DETAILS. ALL PARTITIONS ARE TO BE P1 UNLESS NOTED OTHERWISE.
5. SEE SHEET 18230 FOR DOOR SCHEDULE, DOOR FRAME, DOOR TYPE AND INTERIOR GLASS PARTITION ELEVATIONS AND REFER SPEC 08 8000 FOR DOOR HARDWARE.
6. SEE SHEET SERIES 18080 TO 18089 FOR ENLARGED ROOM LAYOUTS.
7. SEE SHEET SERIES 18160 TO 18181 FOR STAIRCASE AND VERTICAL CIRCULATION LAYOUTS AND SECTIONS.
8. REFER TO SHEETS 17989 TO 17999 FOR LIFE SAFETY PLANS AND SECTIONS SHOWING FIRE RATINGS OF WALLS.
9. ALL DIMENSIONS ARE TO THE FACE OF PAINTED SURFACE UNLESS NOTED OTHERWISE.
10. OVERALL BUILDING DIMENSIONS ARE NOMINAL DIMENSIONS AND FOR ESTIMATION PURPOSES ONLY.



FLOOR PLAN LEGEND

- FUTURE CONSTRUCTION: FURNITURE, BUILDING ELEMENTS, FIXTURES, ETC.
- FD FLOOR DRAIN
- C CARD READER
- K KEY PAD
- REX REQUEST TO EXIT SENSOR
- MD INTRUSION MOTION DETECTOR WALL MOUNTED
- H INTRUSION ALARM HORN
- IAX INTRUSION ALARM KEY PAD
- AB INTRUSION ALARM CONTROL PANEL

Keynote Legend

KEY NO.	DESCRIPTION
5	OPENING FOR CYCLOTRON ACCESS HATCH
7	SLIDING METAL MESH DOOR
8	HOT CELL (PROVIDED BY HOT CELL VENDOR)
9	FUTURE HOT CELL (PROVIDED BY HOT CELL VENDOR)
10	SHOWER AND EYEWASH
11	BICYCLE RACK
12	ACCESS HATCH TO PULL PIT, FUTURE PNEUMATIC TRANSFER LINE CONNECTION
13	PASS-THROUGH
14	AIRLOCK PASS-THROUGH
20	HAND AND FOOT MONITOR
21	BOTTLE FILLER
27	RECESSED ENTRY MAT

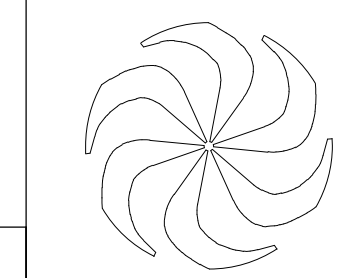
1 GROUND LEVEL
18000 1:100

DISCLAIMER: THIS DRAWING AND DESIGN IS COPYRIGHT PROTECTED WHICH SHALL NOT BE REPRODUCED OR REVISED WITHOUT WRITTEN PERMISSION BY ARCHITECTURE 49. THE CONTRACTOR SHALL CHECK AND VERIFY ALL DIMENSIONS AND UTILITY LOCATIONS AND REPORT ALL ERRORS AND OMISSIONS PRIOR TO COMMENCING WORK. THIS DRAWING IS NOT TO BE SCALED.

FOR REFERENCE TO EXCAVATION TENDER PACKAGE ONLY

ARCHITECTURE 49

270-1075 West Georgia
Vancouver, BC V6E 3C9, Canada
+1 604.736.5329 | WWW.ARCHITECTURE49.COM



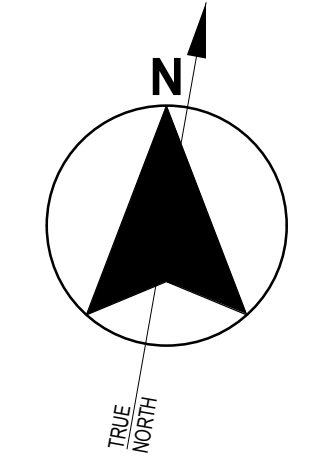
REV	DATE	REVISION DESCRIPTION	BY
G	2019-01-17	Issued for 70% CD - For Reference to Excavation tender package only	
F	2019-01-16	Issued for 60% CD	
E	2019-01-10	Issued for 50% CD	
D	2018-12-20	Issued for 40% CD	
C	2018-12-03	Issued for Development Permit	
B	2018-11-23	100% Design Development	
A	2018-11-23	100% Design Development	

TRIUMF Canada's National Laboratory for Particle and Nuclear Physics 4004 Westbrook Mall | Vancouver BC | Canada V6T-2A3

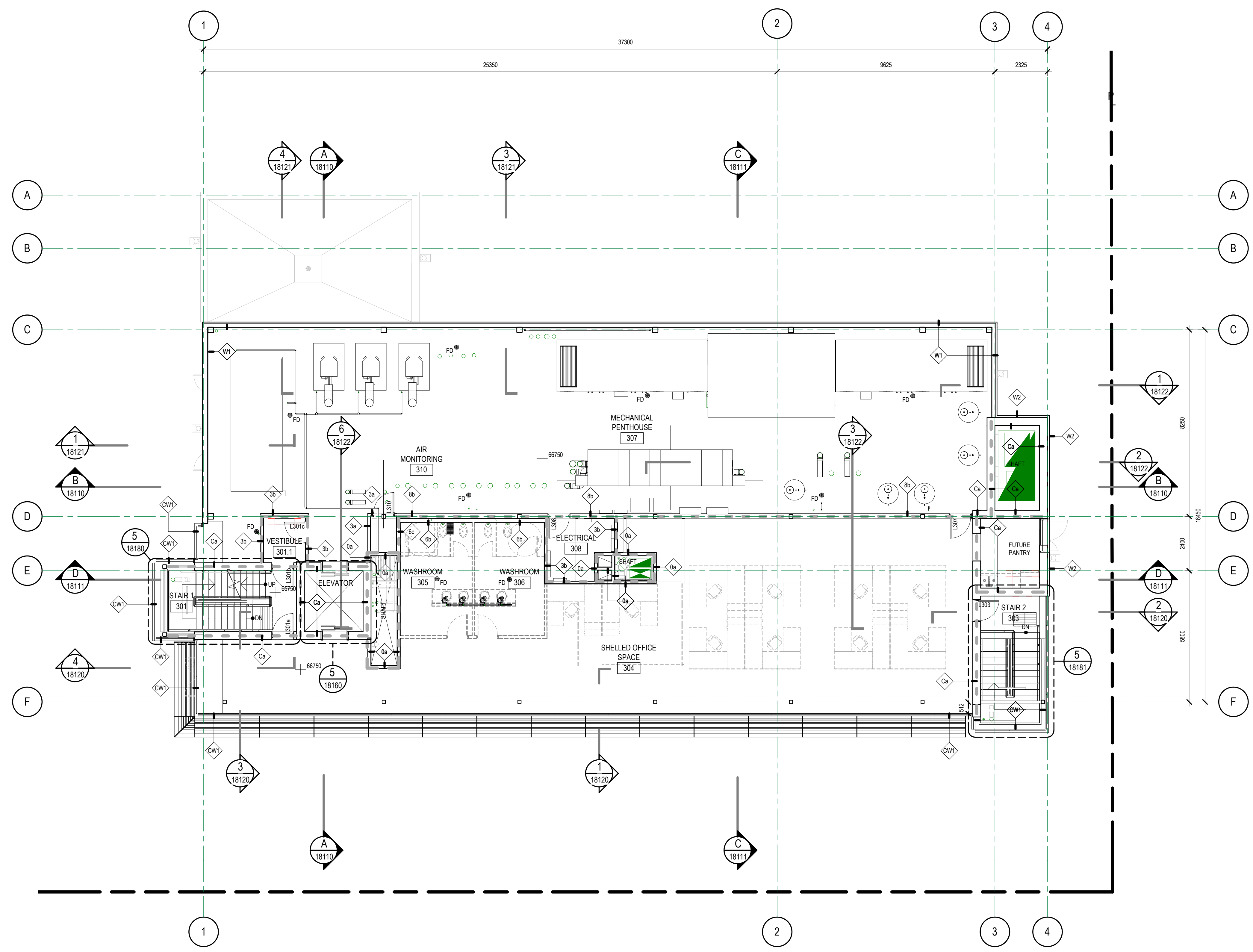
INSTITUTE FOR ADVANCED MEDICAL ISOTOPES (IAM) GROUND LEVEL ARCHITECTURAL

DESIGNED	SB
DRAWN	SA
CHECKED	SB
WR #	
APPROVED	

PLOT SCALE	As indicated	JOB NO.	189-00175-00	DWG NO.	18002	REV.	G
DATE	2018-11-27						



- GENERAL NOTES
1. REFERENCE 1:50 SCALE PLANS FOR ADDITIONAL INFORMATION NOT SHOWN ON THIS PLAN.
 2. REFERENCE SERIES 18042 TO 18045 FOR LABORATORY LAYOUTS.
 3. REFERENCE SERIES 18240 TO 1824X FOR ROOM FINISH SCHEDULE AND 1:50 SCALE FINISH PLAN SHEET FOR INFORMATION ON EXTENT OF WALL AND FLOOR FINISHES AND PROTECTION, SIGNAGE ETC.
 4. REFERENCE SHEET DWG 17821 FOR PARTITION TYPES AND DETAILS. ALL PARTITIONS ARE TO BE P1 UNLESS NOTED OTHERWISE.
 5. SEE SHEET 18230 FOR DOOR SCHEDULE, DOOR FRAME, DOOR TYPE AND INTERIOR GLASS PARTITION ELEVATIONS AND REFER SPEC 08 8000 FOR DOOR HARDWARE.
 6. SEE SHEET SERIES 18080 TO 18089 FOR ENLARGED ROOM LAYOUTS.
 7. SEE SHEET SERIES 18160 TO 18181 FOR STAIRCASE AND VERTICAL CIRCULATION LAYOUTS AND SECTIONS.
 8. REFER TO SHEETS 17989 TO 17999 FOR LIFE SAFETY PLANS AND SECTIONS SHOWING FIRE RATINGS OF WALLS.
 9. ALL DIMENSIONS ARE TO THE FACE OF PAINTED SURFACE UNLESS NOTED OTHERWISE.
 10. OVERALL BUILDING DIMENSIONS ARE NOMINAL DIMENSIONS AND FOR ESTIMATION PURPOSES ONLY.



- FLOOR PLAN LEGEND**
- FUTURE CONSTRUCTION: FURNITURE, BUILDING ELEMENTS, FIXTURES, ETC.
 - FD FLOOR DRAIN
 - C CARD READER
 - K KEY PAD
 - REX REQUEST TO EXIT SENSOR
 - MD INTRUSION MOTION DETECTOR WALL MOUNTED
 - H INTRUSION ALARM HORN
 - IAK INTRUSION ALARM KEY PAD
 - IAC INTRUSION ALARM CONTROL PANEL

Keynote Legend

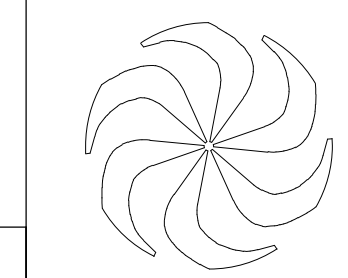
KEY NO.	DESCRIPTION

1 L2 LEVEL
18000 1:100

DISCLAIMER: COPYRIGHT: THIS DRAWING AND DESIGN IS COPYRIGHT PROTECTED WHICH SHALL NOT BE REPRODUCED OR REVISED WITHOUT WRITTEN PERMISSION BY ARCHITECTURE 49. THE CONTRACTOR SHALL CHECK AND VERIFY ALL DIMENSIONS AND UTILITY LOCATIONS AND REPORT ALL ERRORS AND OMISSIONS PRIOR TO COMMENCING WORK. THIS DRAWING IS NOT TO BE SCALED.

FOR REFERENCE TO EXCAVATION TENDER PACKAGE ONLY

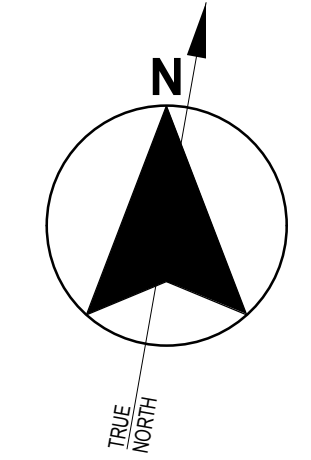
ARCHITECTURE 49
270-1075 West Georgia
Vancouver, BC V6E 3C9, Canada
+1 604.736.5329 | WWW.ARCHITECTURE49.COM



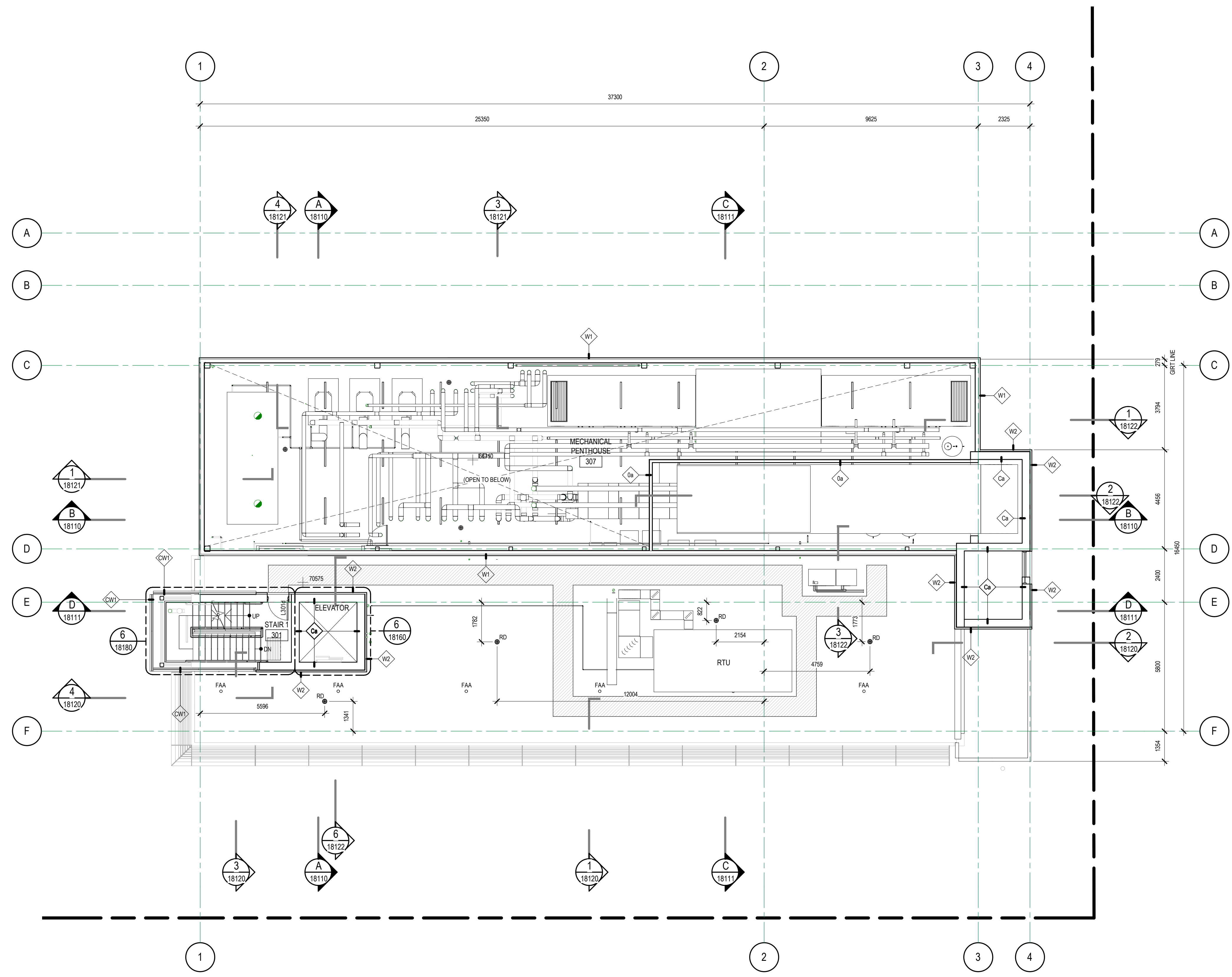
REV	DATE	REVISION DESCRIPTION	BY
G	2019-01-17	Issued for 70% CD - For Reference to Excavation tender package only	
F	2019-01-15	Issued for 60% CD	
E	2019-01-10	Issued for 50% CD	
D	2018-12-20	Issued for 40% CD	
C	2018-12-03	Issued for Development Permit	
B	2018-11-23	100% Design Development	
A			

TRIUMF Canada's National Laboratory for Particle and Nuclear Physics 4004 Westbrook Mall | Vancouver BC | Canada V6T-2A3

DESIGNED	SB	INSTITUTE FOR ADVANCED MEDICAL ISOTOPES (IAM)			
DRAWN	SA	L2 LEVEL			
CHECKED	SB	ARCHITECTURAL			
WR #	PLOT SCALE	As indicated			
APPROVED	DATE	2018-11-27			
JOB NO.	189-00175-00	DWG NO.	18004	REV.	G



- GENERAL NOTES
1. REFERENCE 1:50 SCALE PLANS FOR ADDITIONAL INFORMATION NOT SHOWN ON THIS PLAN.
 2. REFERENCE SERIES 18042 TO 18045 FOR LABORATORY LAYOUTS.
 3. REFERENCE SERIES 18240 TO 1824X FOR ROOM FINISH SCHEDULE AND 1:50 SCALE FINISH PLAN SHEET FOR INFORMATION ON EXTENT OF WALL AND FLOOR FINISHES AND PROTECTION SIGNAGE ETC.
 4. REFERENCE SHEET DWG 17821 FOR PARTITION TYPES AND DETAILS. ALL PARTITIONS ARE TO BE P1 UNLESS NOTED OTHERWISE.
 5. SEE SHEET 18230 FOR DOOR SCHEDULE, DOOR FRAME, DOOR TYPE AND INTERIOR GLASS PARTITION ELEVATIONS AND REFER SPEC 08 8000 FOR DOOR HARDWARE.
 6. SEE SHEET SERIES 18080 TO 18089 FOR ENLARGED ROOM LAYOUTS.
 7. SEE SHEET SERIES 18160 TO 18181 FOR STAIRCASE AND VERTICAL CIRCULATION LAYOUTS AND SECTIONS.
 8. REFER TO SHEETS 17989 TO 17999 FOR LIFE SAFETY PLANS AND SECTIONS SHOWING FIRE RATINGS OF WALLS.
 9. ALL DIMENSIONS ARE TO THE FACE OF PAINTED SURFACE UNLESS NOTED OTHERWISE.
 10. OVERALL BUILDING DIMENSIONS ARE NOMINAL DIMENSIONS AND FOR ESTIMATION PURPOSES ONLY.



- ROOF LEGEND**
- SHADING INDICATES ROOF AREAS WHERE TAPERED INSULATION IS REQUIRED FOR SLOPE. NOTE THAT ADDITIONAL TAPERED INSULATION (NOT INDICATED ON THIS PLAN) MAY BE REQUIRED AGAINST PARAPETS, WALLS OR EQUIPMENT TO CREATE BACKSLOPES OR CRICKETS.
 - EXTENT OF TRAFFIC MEMBRANE WALKWAYS: 600mm TYPICAL WALKWAY WIDTH, 900mm TYPICAL WIDTH AROUND EQUIPMENT.
 - RD - ROOF DRAIN
 - SD - INDICATES SCUPPER DRAIN LOCATION
 - FAA - INDICATES FALL ARREST ANCHOR LOCATION
 - LPAT - INDICATES LIGHTNING PROTECTION AIR TERMINAL LOCATION

Keynote Legend

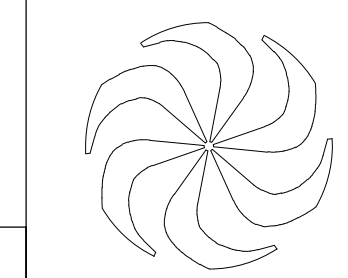
KEY NO.	DESCRIPTION

1 R1 - LOW ROOF
18090 1:100

DISCLAIMER: THIS DRAWING AND DESIGN IS COPYRIGHT PROTECTED WHICH SHALL NOT BE REPRODUCED OR REVISED WITHOUT WRITTEN PERMISSION BY ARCHITECTURE 49. THE CONTRACTOR SHALL CHECK AND VERIFY ALL DIMENSIONS AND UTILITY LOCATIONS AND REPORT ALL ERRORS AND OMISSIONS PRIOR TO COMMENCING WORK. THIS DRAWING IS NOT TO BE SCALED.

FOR REFERENCE TO EXCAVATION TENDER PACKAGE ONLY

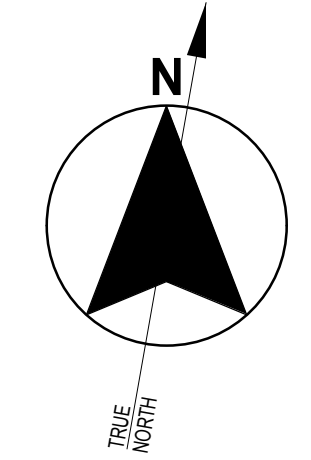
ARCHITECTURE 49
270-1075 West Georgia
Vancouver, BC V6E 3C9, Canada
+1 604.736.5329 | WWW.ARCHITECTURE49.COM



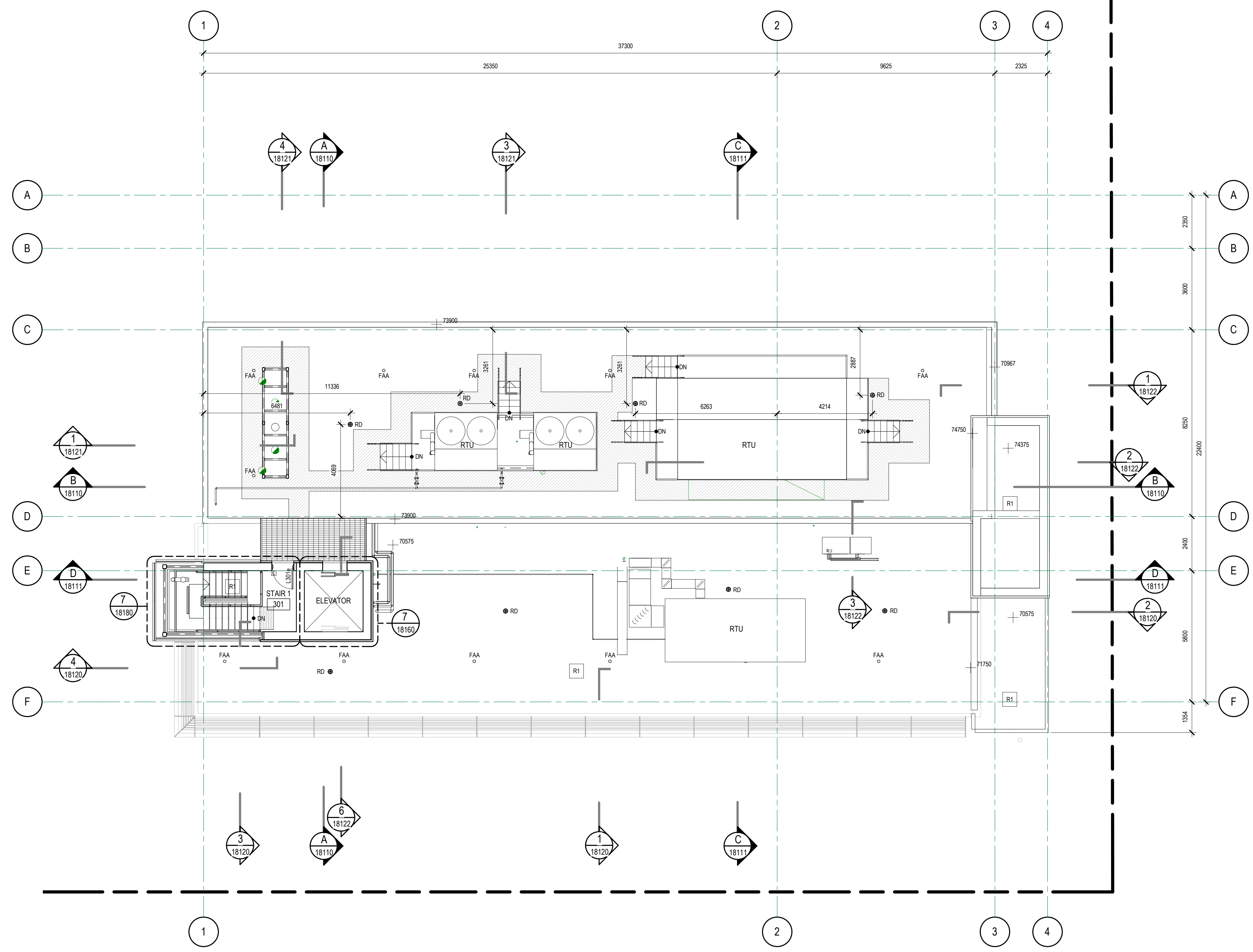
REV	DATE	REVISION DESCRIPTION	BY
G	2019-01-17	Issued for 70% CD - For Reference to Excavation tender package only	
F	2019-01-15	Issued for 60% CD	
E	2019-01-10	Issued for 50% CD	
D	2018-12-20	Issued for 40% CD	
C	2018-12-03	Issued for Development Permit	
B	2018-11-23	100% Design Development	
A			

TRIUMF Canada's National Laboratory for Particle and Nuclear Physics 4004 Westbrook Mall | Vancouver BC | Canada V6T-2A3

DESIGNED	SB	INSTITUTE FOR ADVANCED MEDICAL ISOTOPES (IAM)	
DRAWN	SA	R1 ROOF	
CHECKED	SB	ARCHITECTURAL	
WR #	PLOT SCALE	As indicated	JOB NO. 189-00175-00
APPROVED	DATE	2018-11-27	DWG NO. 18005
			REV. G



- GENERAL NOTES
1. REFERENCE 1:50 SCALE PLANS FOR ADDITIONAL INFORMATION NOT SHOWN ON THIS PLAN.
 2. REFERENCE SERIES 18042 TO 18045 FOR LABORATORY LAYOUTS
 3. REFERENCE SERIES 18240 TO 1824X FOR ROOM FINISH SCHEDULE AND 1:50 SCALE FINISH PLAN SHEET FOR INFORMATION ON EXTENT OF WALL AND FLOOR FINISHES AND PROTECTION, SIGNAGE ETC.
 4. REFERENCE SHEET DWG 17821 FOR PARTITION TYPES AND DETAILS. ALL PARTITIONS ARE TO BE P1 UNLESS NOTED OTHERWISE.
 5. SEE SHEET 18230 FOR DOOR SCHEDULE, DOOR FRAME, DOOR TYPE AND INTERIOR GLASS PARTITION ELEVATIONS AND REFER SPEC 08 8000 FOR DOOR HARDWARE.
 6. SEE SHEET SERIES 18090 TO 18099 FOR ENLARGED ROOM LAYOUTS.
 7. SEE SHEET SERIES 18160 TO 18181 FOR STAIRCASE AND VERTICAL CIRCULATION LAYOUTS AND SECTIONS.
 8. REFER TO SHEETS 17989 TO 17999 FOR LIFE SAFETY PLANS AND SECTIONS SHOWING FIRE RATINGS OF WALLS.
 9. ALL DIMENSIONS ARE TO THE FACE OF PAINTED SURFACE UNLESS NOTED OTHERWISE.
 10. OVERALL BUILDING DIMENSIONS ARE NOMINAL DIMENSIONS AND FOR ESTIMATION PURPOSES ONLY.



- ROOF LEGEND**
- SHADING INDICATES ROOF AREAS WHERE TAPERED INSULATION IS REQUIRED FOR SLOPE. NOTE THAT ADDITIONAL TAPERED INSULATION (NOT INDICATED ON THIS PLAN) MAY BE REQUIRED AGAINST PARAPETS, WALLS OR EQUIPMENT TO CREATE BACKSLOPES OR CRICKETS
 - EXTENT OF TRAFFIC MEMBRANE WALKWAYS
600mm TYPICAL WALKWAY WIDTH
900mm TYPICAL WIDTH AROUND EQUIPMENT
 - RD - ROOF DRAIN
 - SD - INDICATES SCUPPER DRAIN LOCATION
 - FAA - INDICATES FALL ARREST ANCHOR LOCATION
 - LPAT - INDICATES LIGHTNING PROTECTION AIR TERMINAL LOCATION

Keynote Legend

KEY NO.	DESCRIPTION

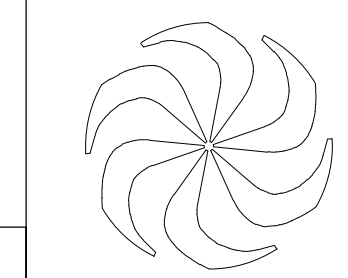
1 R2- HIGH ROOF
1:100

DISCLAIMER: THIS DRAWING AND DESIGN IS COPYRIGHT PROTECTED WHICH SHALL NOT BE REPRODUCED OR REVISED WITHOUT WRITTEN PERMISSION BY ARCHITECTURE 49. THE CONTRACTOR SHALL CHECK AND VERIFY ALL DIMENSIONS AND UTILITY LOCATIONS AND REPORT ALL ERRORS AND OMISSIONS PRIOR TO COMMENCING WORK. THIS DRAWING IS NOT TO BE SCALED.

FOR REFERENCE TO EXCAVATION TENDER PACKAGE ONLY

ARCHITECTURE 49

270-1075 West Georgia
Vancouver, BC V6E 3C9, Canada
+1 604.736.5329 | WWW.ARCHITECTURE49.COM

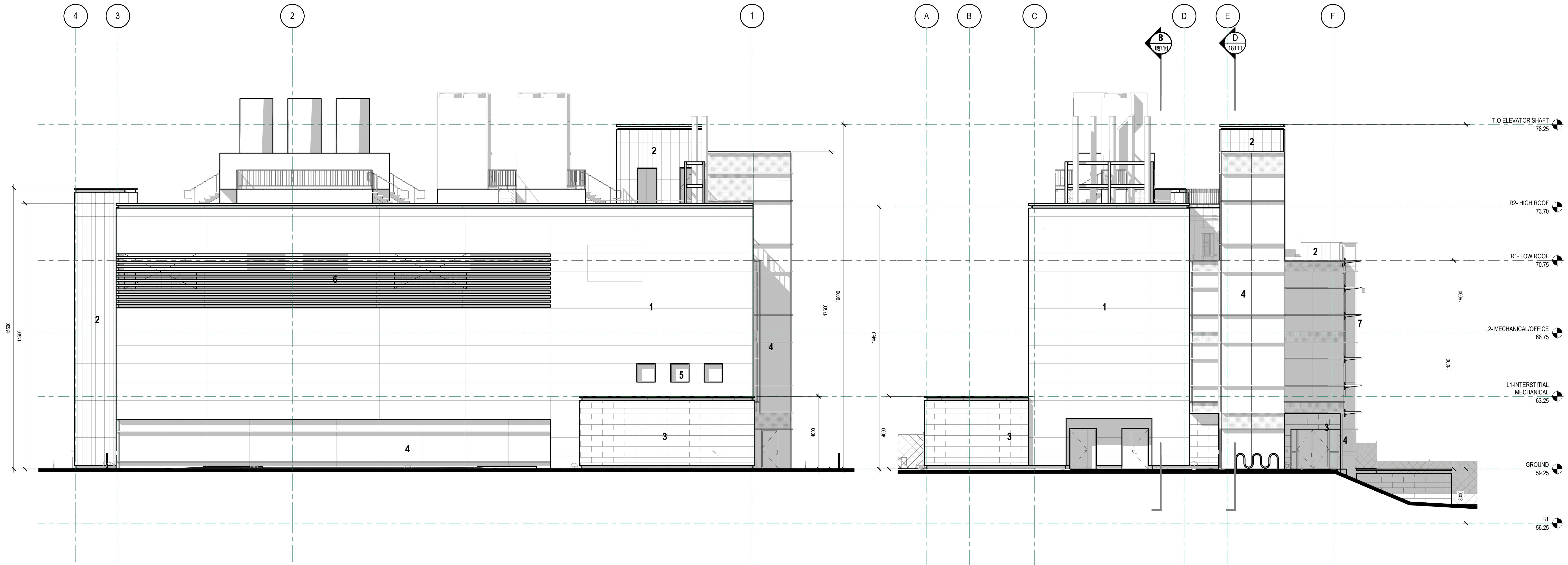


REV	DATE	REVISION DESCRIPTION	BY
G	2019-01-17	Issued for 70% CD - For Reference to Excavation tender package only	
F	2019-01-15	Issued for 60% CD	
E	2019-01-10	Issued for 50% CD	
D	2018-12-20	Issued for 40% CD	
C	2018-12-03	Issued for Development Permit	
B	2018-11-23	100% Design Development	
A			

TRIUMF Canada's National Laboratory for Particle and Nuclear Physics 4004 Westbrook Mall | Vancouver BC | Canada V6T-2A3

INSTITUTE FOR ADVANCED MEDICAL ISOTOPES (IAM)
R2 ROOF
ARCHITECTURAL

DESIGNED	SB	PLOT SCALE	As indicated	JOB NO.	189-00175-00	DWG NO.	18006	REV.	G
DRAWN	SA								
CHECKED	SB	DATE	2018-11-27						
WR #		APPROVED							



1 NORTH ELEVATION
1:100

2 WEST ELEVATION
1:100

MATERIAL LEGEND

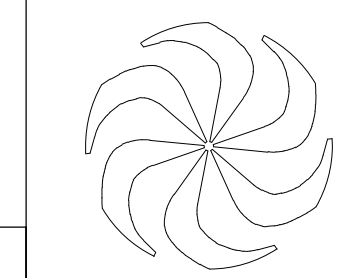
- 1 **W1 - INSULATED METAL PANEL**
CENTRIA / FWGX / GRAY VELVET / 1016 x 4900
- 2 **W2 - INSULATED METAL PANEL**
CENTRIA / FWDS / CLAY - SUNDANCE MICA
- 3 **W3 - METAL CLADDING**
RHEINZINK / GRAPHITE
- 4 **CURTAIN WALL GLAZING SYSTEM**
KAWNEER / 1600UT / ALUMINUM - ANNOIDIZED
- 5 **WINDOW**
VISION GLAZING / ALUMINUM FRAME - ANNOIDIZED
- 6 **LOUVRE**
CENTRIA / FWGX / GRAY VELVET / LOUVRE
- 7 **SOLAR SHADING SYSTEM**
KAWNEER / VERSOLEIL / ALUMINUM - ANNOIDIZED

DISCLAIMER: THIS DRAWING AND DESIGN IS COPYRIGHT PROTECTED WHICH SHALL NOT BE REPRODUCED OR REVISED WITHOUT WRITTEN PERMISSION BY ARCHITECTURE 49. THE CONTRACTOR SHALL CHECK AND VERIFY ALL DIMENSIONS AND UTILITY LOCATIONS AND REPORT ALL ERRORS AND OMISSIONS PRIOR TO COMMENCING WORK. THIS DRAWING IS NOT TO BE SCALED.

FOR REFERENCE TO EXCAVATION TENDER PACKAGE ONLY

ARCHITECTURE 49

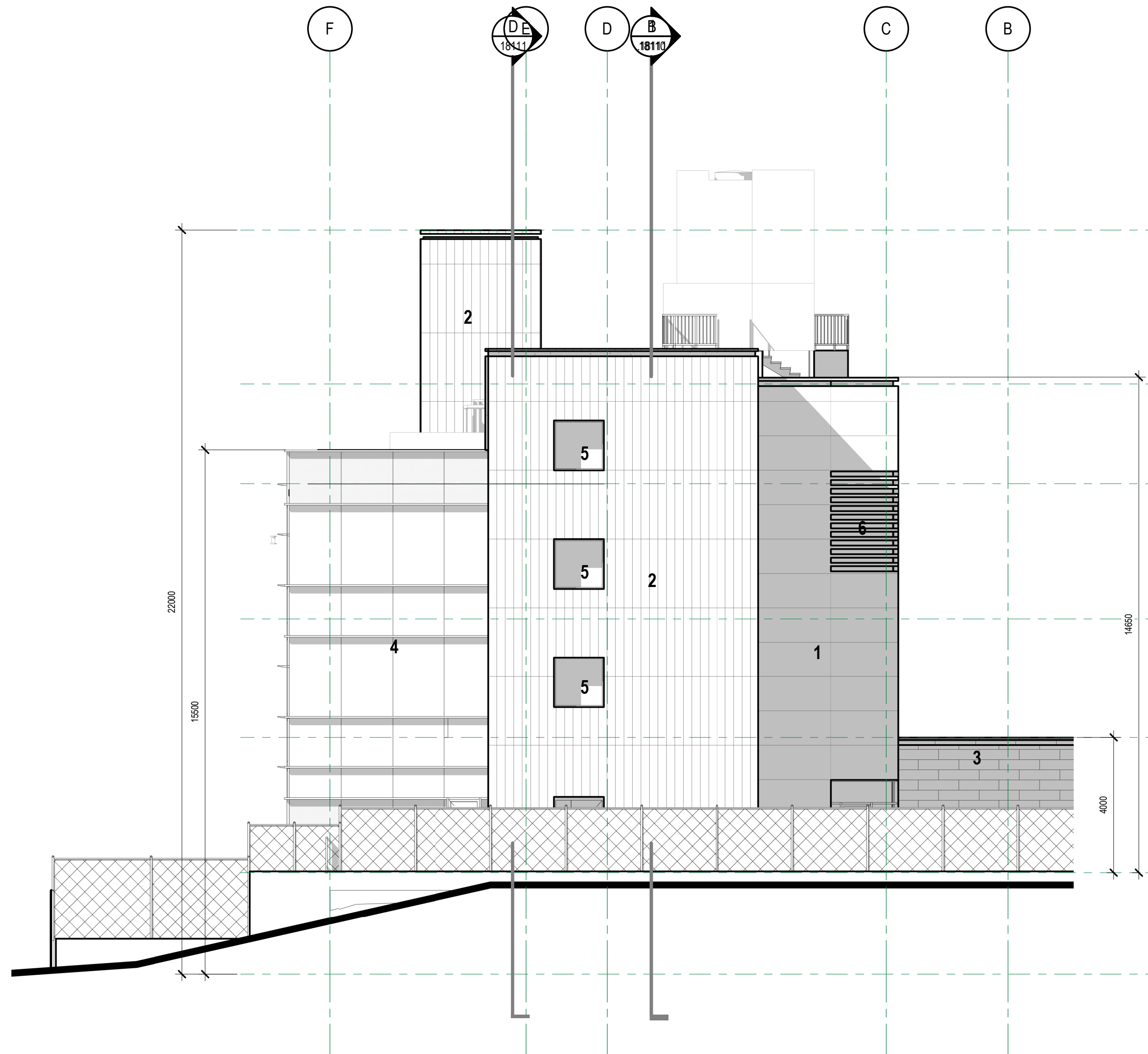
270-1075 West Georgia
Vancouver, BC V6E 3C9, Canada
+1 604.736.5232 | WWW.ARCHITECTURE49.COM



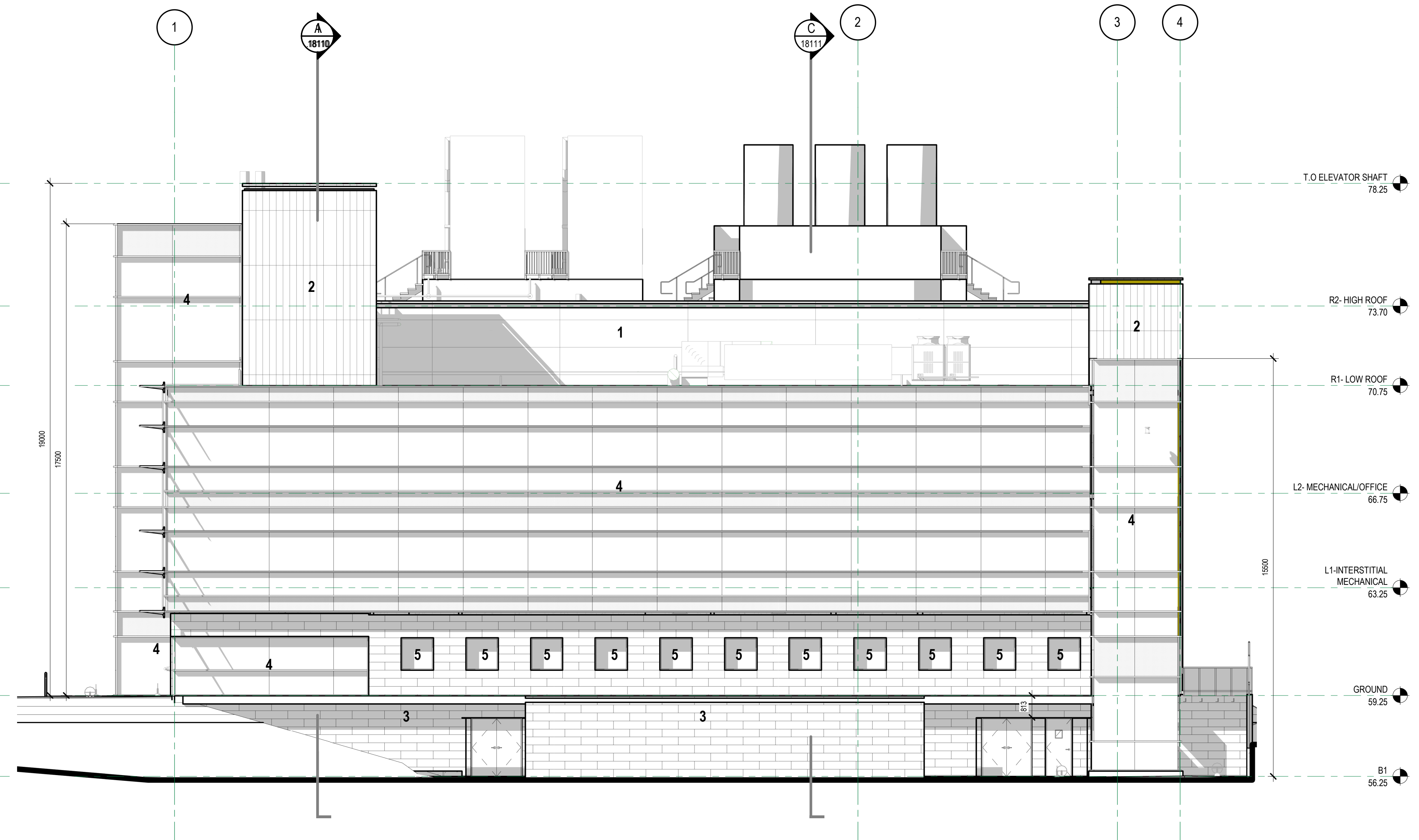
REV	DATE	REVISION DESCRIPTION	BY
G	2019-01-17	Issued for 70% CD - For Reference to Excavation tender package only	
F	2019-01-15	Issued for 60% CD	
E	2019-01-10	Issued for 50% CD	
D	2018-12-20	Issued for 40% CD	
C	2018-12-03	Issued for Development Permit	
B	2018-11-23	100% Design Development	

TRIUMF Canada's National Laboratory for Particle and Nuclear Physics 4004 Westbrook Mall | Vancouver BC | Canada V6T-2A3

DESIGNED	SB	INSTITUTE FOR ADVANCED MEDICAL ISOTOPES (IAM)	
DRAWN	SA	ELEVATIONS - NORTH AND WEST	
CHECKED	SB	ARCHITECTURAL	
WR #		PLOT SCALE 1:100	JOB NO. 189-00175-00
APPROVED		DATE 2018-11-27	DWG NO. 18090
			REV. G



1 EAST ELEVATION
1:100



2 SOUTH ELEVATION
1:100

MATERIAL LEGEND

- 1 **W1 - INSULATED METAL PANEL**
CENTRIA / FWGX / GRAY VELVET / 1016 x 4900
- 2 **W2 - INSULATED METAL PANEL**
CENTRIA / FWDS / CLAY - SUNDANCE MICA
- 3 **W3 - METAL CLADDING**
RHEINZINK / GRAPHITE
- 4 **CURTAIN WALL GLAZING SYSTEM**
KAWNEER / 1600UT / ALUMINUM - ANNOIDIZED
- 5 **WINDOW**
VISION GLAZING / ALUMINUM FRAME - ANNOIDIZED
- 6 **LOUVRE**
CENTRIA / FWGX / GRAY VELVET / LOUVRE
- 7 **SOLAR SHADING SYSTEM**
KAWNEER / VERSOLEIL / ALUMINUM - ANNOIDIZED

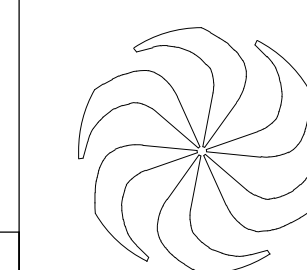
DISCLAIMER: THIS DRAWING AND DESIGN IS COPYRIGHT PROTECTED WHICH SHALL NOT BE REPRODUCED OR REVISED WITHOUT WRITTEN PERMISSION BY ARCHITECTURE 49. THE CONTRACTOR SHALL CHECK AND VERIFY ALL DIMENSIONS AND UTILITY LOCATIONS AND REPORT ALL ERRORS AND OMISSIONS PRIOR TO COMMENCING WORK. THIS DRAWING IS NOT TO BE SCALED.

FOR REFERENCE TO EXCAVATION TENDER PACKAGE ONLY

ARCHITECTURE 49

270-1075 West Georgia
Vancouver, BC V6E 3C9, Canada
+1 604.736.5329 | WWW.ARCHITECTURE49.COM

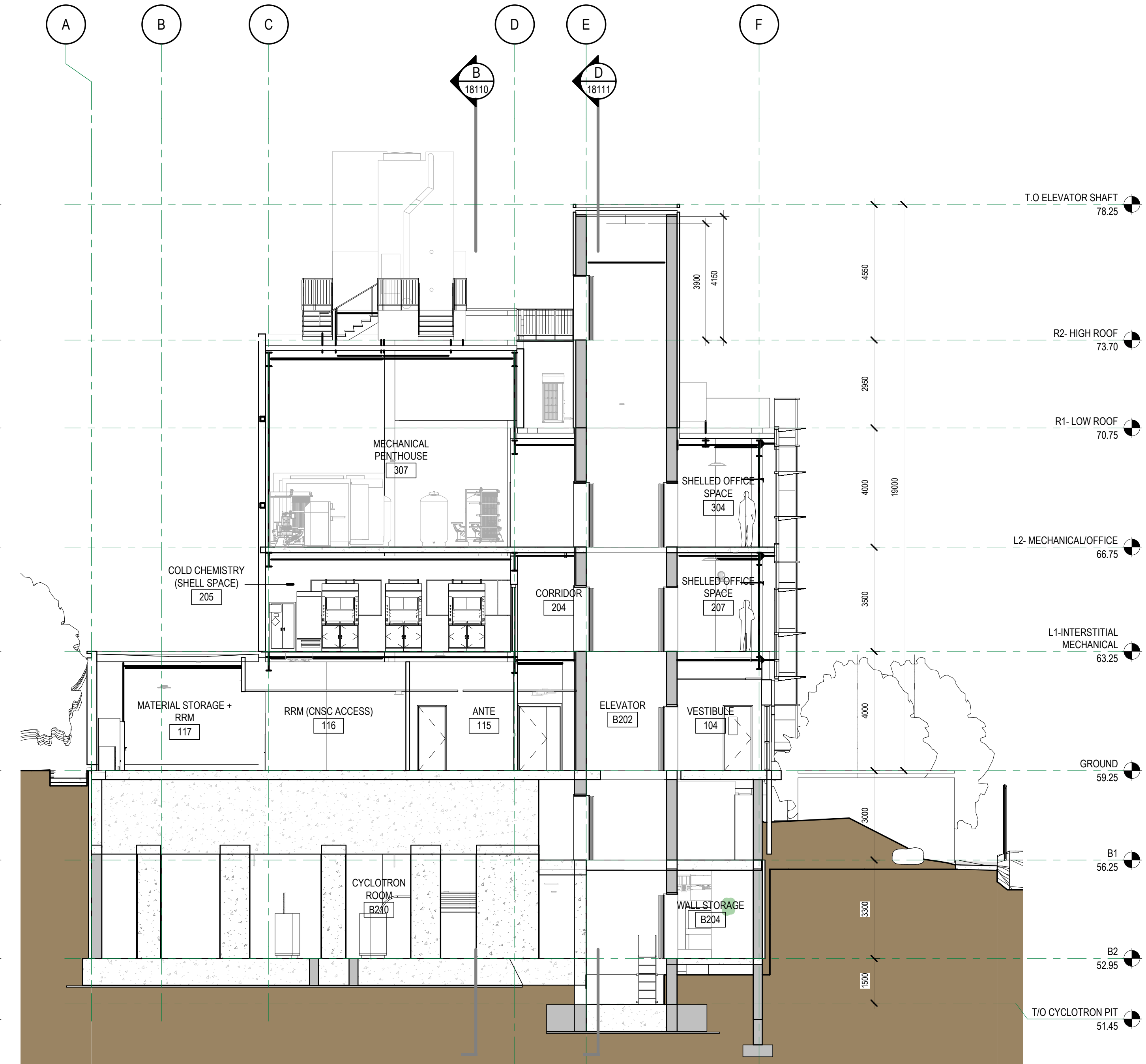
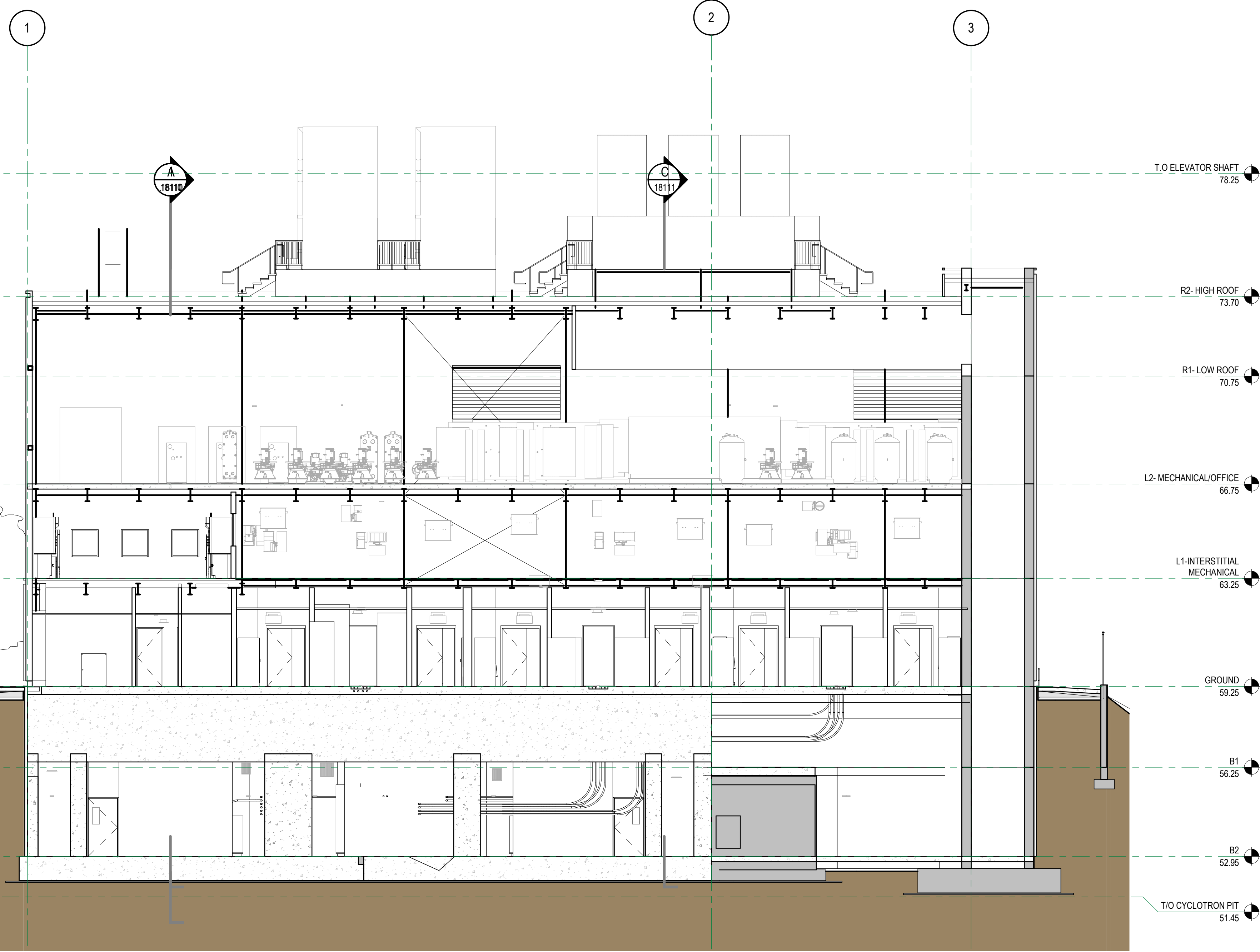
SEAL:



REV	DATE	REVISION DESCRIPTION	BY
G	2019-01-17	Issued for 70% CD - For Reference to Excavation tender package only	
F	2019-01-15	Issued for 60% CD	
E	2019-01-10	Issued for 50% CD	
D	2018-12-20	Issued for 40% CD	
C	2018-12-03	Issued for Development Permit	
B	2018-11-23	100% Design Development	

TRIUMF Canada's National Laboratory for Particle and Nuclear Physics 4004 Westbrook Mall | Vancouver BC | Canada V6T-2A3

DESIGNED	SB	INSTITUTE FOR ADVANCED MEDICAL ISOTOPES (IAM)		
DRAWN	SA	ELEVATIONS - EAST AND SOUTH		
CHECKED	SB	ARCHITECTURAL		
WR #		PLOT SCALE 1:100	JOB NO. 189-00175-00	DWG NO. 18091
APPROVED		DATE 2018-11-27		REV. G



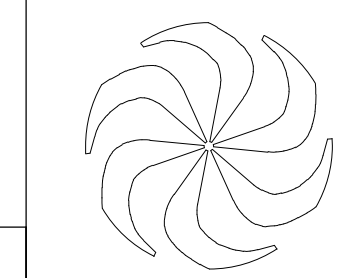
B SECTION B
1:100

A SECTION A
1:100

DISCLAIMER: THIS DRAWING AND DESIGN IS COPYRIGHT PROTECTED WHICH SHALL NOT BE USED, REPRODUCED OR REVISED WITHOUT WRITTEN PERMISSION BY ARCHITECTURE 49. THE CONTRACTOR SHALL CHECK AND VERIFY ALL DIMENSIONS AND UTILITY LOCATIONS AND REPORT ALL ERRORS AND OMISSIONS PRIOR TO COMMENCING WORK. THIS DRAWING IS NOT TO BE SCALED.

FOR REFERENCE TO EXCAVATION TENDER PACKAGE ONLY

ARCHITECTURE 49
270-1075 West Georgia
Vancouver, BC V6E 3C9, Canada
+1 604.736.5329 | WWW.ARCHITECTURE49.COM



REV	DATE	REVISION DESCRIPTION	BY
G	2019-01-17	Issued for 70% CD - For Reference to Excavation tender package only	
F	2019-01-15	Issued for 60% CD	
E	2019-01-10	Issued for 50% CD	
D	2018-12-20	Issued for 40% CD	
C	2018-12-03	Issued for Development Permit	
B	2018-11-23	100% Design Development	

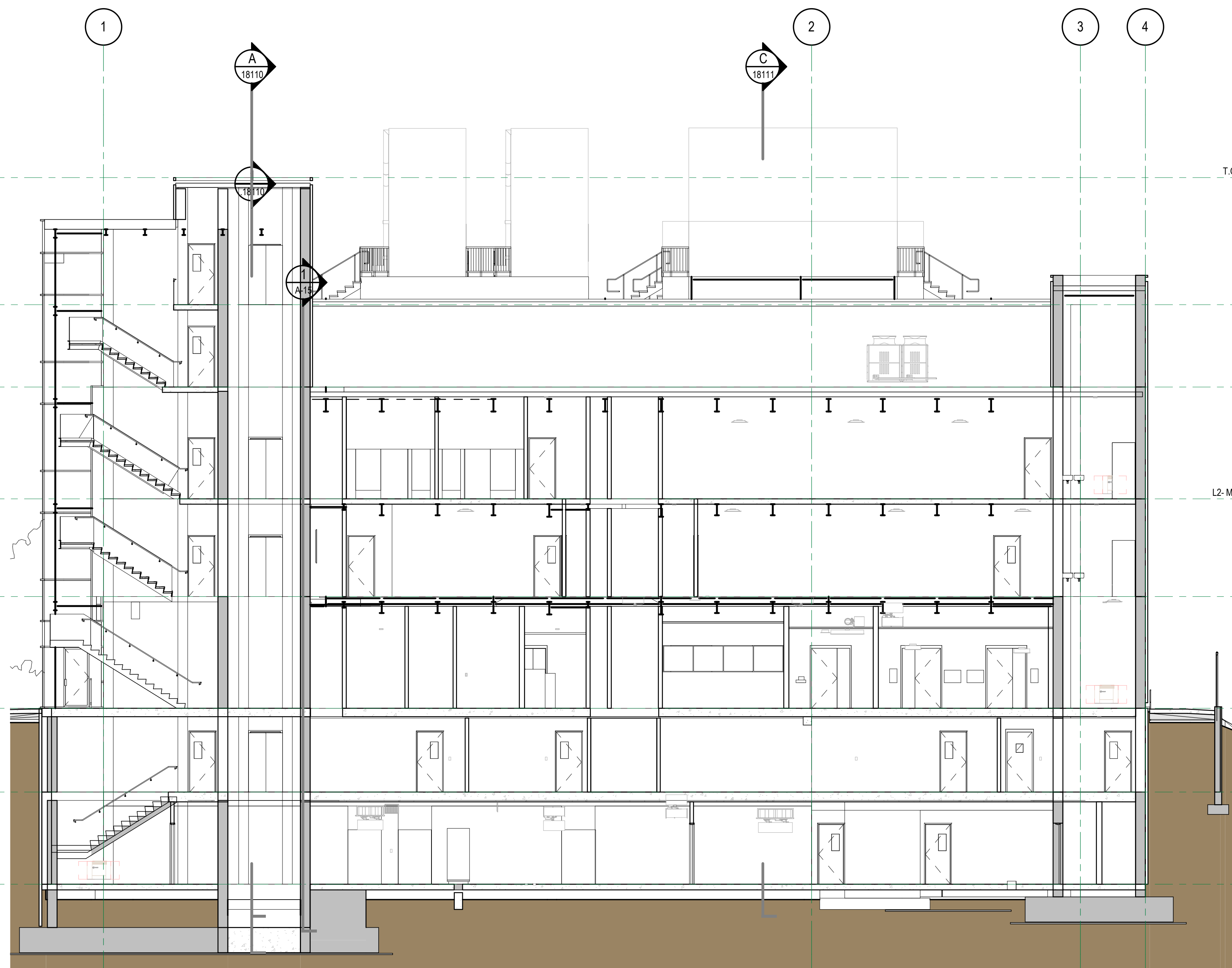
TRIUMF Canada's National Laboratory for Particle and Nuclear Physics 4004 Westbrook Mall | Vancouver BC | Canada V6T-2A3

INSTITUTE FOR ADVANCED MEDICAL ISOTOPES (IAM)

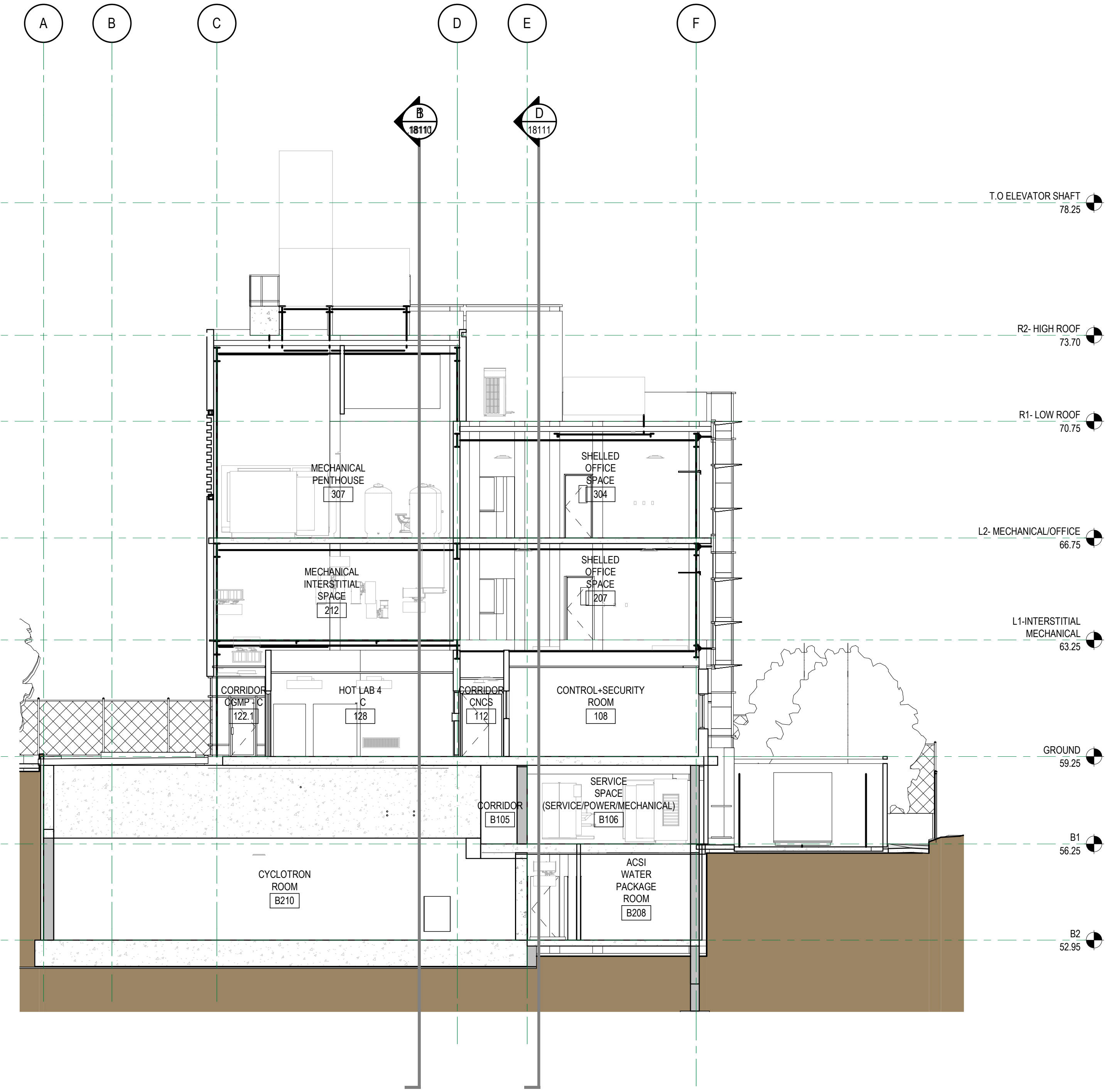
SECTIONS ARCHITECTURAL

DESIGNED SB
DRAWN SA
CHECKED SB
WR #
APPROVED

PLOT SCALE 1:100
DATE 2018-11-27
JOB NO. 189-00175-00
DWG NO. 18110
REV. G



D SECTION D
18000 1:100



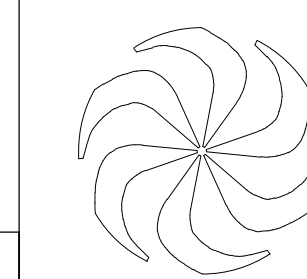
C SECTION C
18000 1:100

DISCLAIMER: THIS DRAWING AND DESIGN IS COPYRIGHT PROTECTED WHICH SHALL NOT BE USED, REPRODUCED OR REVERSED WITHOUT WRITTEN PERMISSION BY ARCHITECTURE 49. THE CONTRACTOR SHALL CHECK AND VERIFY ALL DIMENSIONS AND UTILITY LOCATIONS AND REPORT ALL ERRORS AND OMISSIONS PRIOR TO COMMENCING WORK. THIS DRAWING IS NOT TO BE SCALED.

FOR REFERENCE TO EXCAVATION TENDER PACKAGE ONLY

ARCHITECTURE 49

270-1075 West Georgia
Vancouver, BC V6E 3C9, Canada
+1 604.736.5329 | WWW.ARCHITECTURE49.COM



REV	DATE	REVISION DESCRIPTION	BY
G	2019-01-17	Issued for 70% CD - For Reference to Excavation tender package only	
F	2019-01-15	Issued for 60% CD	
E	2019-01-10	Issued for 50% CD	
D	2018-12-20	Issued for 40% CD	
C	2018-12-03	Issued for Development Permit	
B	2018-11-23	100% Design Development	

TRIUMF Canada's National Laboratory for Particle and Nuclear Physics 4004 Westbrook Mall | Vancouver BC | Canada V6T-2A3

INSTITUTE FOR ADVANCED MEDICAL ISOTOPES (IAM)

SECTIONS ARCHITECTURAL

DESIGNED	SB
DRAWN	SA
CHECKED	SB
WR #	
APPROVED	

PLOT SCALE	1:100	JOB NO.	189-00175-00	DWG NO.	18111	REV.	G
DATE	2018-11-27						