

**DRAWING LIST**

17900 (L100)	LAND. ARCH. COVER
17901 (L101)	CONCEPT STATEMENT
17902 (L102)	TREE PROTECTION & TREE REMOVAL PLAN (TREE SURVEY)
17903 (L103)	SITE PLAN
17904 (L104)	PLAN ENLARGEMENT 1
17905 (L105)	PLAN ENLARGEMENT 2
17906 (L106)	SECTIONS 1
17907 (L107)	SECTIONS 2
17908 (L108)	PLANTING PLAN 1
17909 (L109)	PLANTING PLAN 2
17909 (L110)	DETAILS 1
17909 (L111)	DETAILS 2

WSP LANDSCAPE ARCHITECTURE

**Jacqueline Lowe**  
Senior Project Manager and Landscape Architect  
Email: jacqueline.lowe@wsp.com  
Phone: (604) 685-9381

**Lisa Ng**  
Landscape Designer  
Email: lisa.ng@wsp.com  
Phone: (604) 601-6836

REV	DATE	REVISION DESCRIPTION	BY
I	19/01/15	ISSUED FOR 60% CONSTRUCTION DOCUMENTS	JL
H	18/12/20	ISSUED FOR 40% CONSTRUCTION DOCUMENTS	JL
G	18/12/03	ISSUED FOR DEVELOPMENT PERMIT	JL
F	18/11/27	AJDP SUBMISSION	JL
E	18/11/26	100% DESIGN DEVELOPMENT	JL
D	18/11/21	IN PROGRESS REVIEW SET	JL
REV	DATE	REVISION DESCRIPTION	BY

**TRIUMF** Canada's National Laboratory for Particle and Nuclear Physics 4004 Westbrook Mall | Vancouver BC | Canada V6T-2A3

INSTITUTE FOR ADVANCED MEDICAL ISOTOPES (IAMI)  
LANDSCAPE ARCHITECTURE COVER  
LANDSCAPE ARCHITECTURE

DESIGNED	JL	PLOT SCALE	1:150	JOB NO.		DWG NO.	17900 (L100)	REV.	H
DRAWN	LN	DATE	2018/12/21		189-00175-00				
CHECKED	JL								
WR #									
APPROVED									

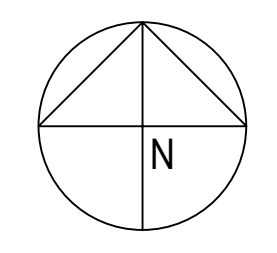
DISCLAIMER: COPYRIGHT

THIS DRAWING AND DESIGN IS COPYRIGHT PROTECTED WHICH SHALL NOT BE REPRODUCED OR REUSED WITHOUT WRITTEN PERMISSION BY ARCHITECTURE 49. THE CONTRACTOR SHALL CHECK AND VERIFY ALL DIMENSIONS AND UTILITY LOCATIONS AND REPORT ALL ERRORS AND OMISSIONS PRIOR TO COMMENCING WORK. THIS DRAWING IS NOT TO BE SCALED.

**wsp** ARCHITECTURE | 49

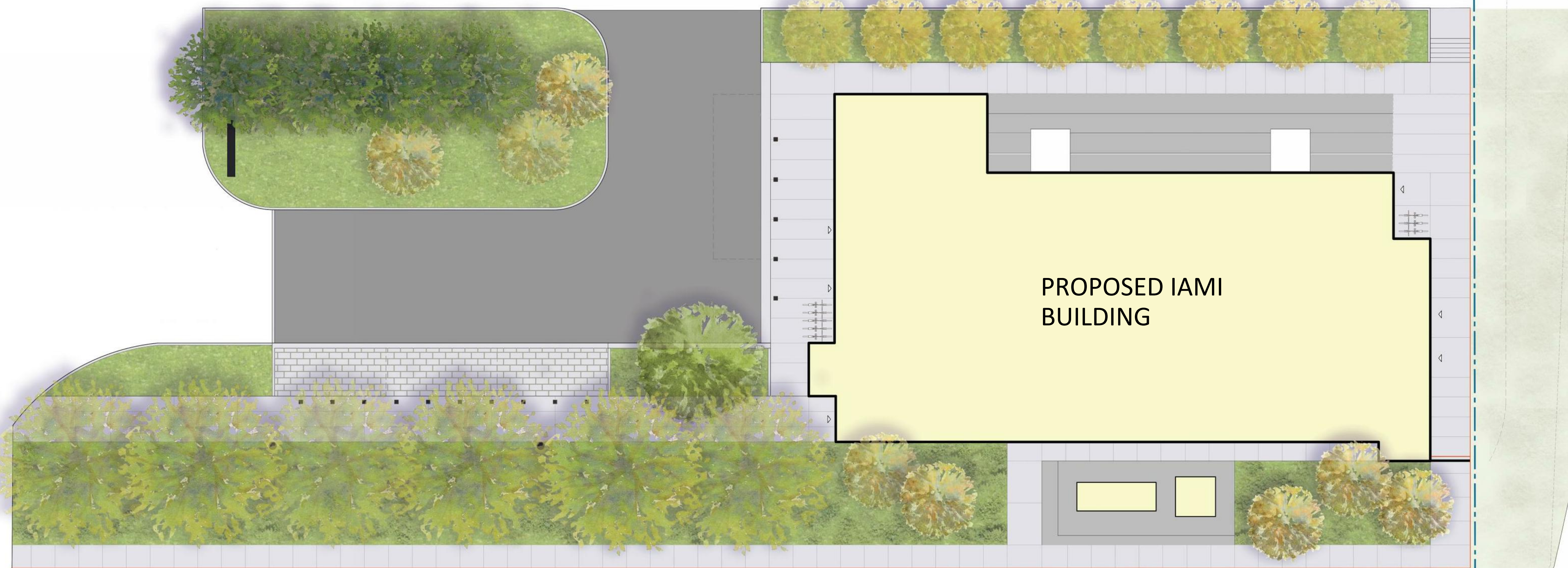
LANDSCAPE ARCHITECTURE | URBAN DESIGN | PLANNING | ENGINEERING

SUITE 270 - 1075 WEST GEORGIA VANCOUVER, BC CANADA V6E 3C3 T +1 604.736.5329 F +1 604.736.1519 | WWW.ARCHITECTURE49.COM





SITE CONCEPT  
FROM DP PHASE



Landscape Approach

The landscape approach was to provide a responsive plan that supported the functions of the IAMI building; and that was complementary to the building architecture.

TRIUMF will be actively using the IAMI building for advanced research in the discovery of medical isotopes and the development of cancer drug treatments and therapies.

A new entry promenade and parking/drop-off space is the focus of the design, flanked by lighting, bollards, and a promenade row of trees to visually guide users towards the entry. The highest quality materials of the landscape design and plantings are focused within this area. The remaining proposed landscape design surrounding the IAMI building is focused on connecting IAMI to the existing TRIUMF campus, and screening the facility's security fencing from the perspective of trail users along Pacific Spirit Regional Park's trail network; east of TRIUMF.

NOTE: This sheet will be replaced with technical notes on subsequent phases

I	18/01/15	ISSUED FOR 60% CONSTRUCTION DOCUMENTS	JL
H	18/12/20	ISSUED FOR 40% CONSTRUCTION DOCUMENTS	JL
G	18/12/03	ISSUED FOR DEVELOPMENT PERMIT	JL
F	18/11/27	AUDP SUBMISSION	JL
E	18/11/26	100% DESIGN DEVELOPMENT	JL
D	18/11/21	IN PROGRESS REVIEW SET	JL
REV	DATE	REVISION DESCRIPTION	BY

**TRIUMF** Canada's National Laboratory for Particle and Nuclear Physics 4004 Westbrook Mall | Vancouver BC | Canada V6T-2A3

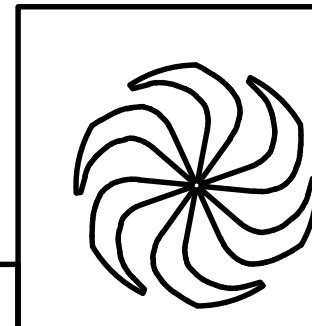
DESIGNED	JL	INSTITUTE FOR ADVANCED MEDICAL ISOTOPES (IAM)	
DRAWN	LN	LANDSCAPE ARCHITECTURE NOTES	
CHECKED	JL	LANDSCAPE ARCHITECTURE	
WR #	PLOT SCALE	NA	JOB NO.
APPROVED	DATE	2018/12/21	189-00175-00
			DWG NO.
			17901 (L101)
			REV.
			H

DISCLAIMER: COPYRIGHT  
THIS DRAWING AND DESIGN IS COPYRIGHT PROTECTED WHICH SHALL NOT BE USED, REPRODUCED OR REVISED WITHOUT WRITTEN PERMISSION BY ARCHITECTURE 49. THE CONTRACTOR SHALL CHECK AND VERIFY ALL DIMENSIONS AND UTILITY LOCATIONS AND REPORT ALL ERRORS AND OMISSIONS PRIOR TO COMMENCING WORK. THIS DRAWING IS NOT TO BE SCALED.



**ARCHITECTURE 49**  
SUITE 270 - 1075 WEST GEORGIA  
VANCOUVER, BC CANADA V6E 3C3  
T +1 604.736.5329 F +1 604.736.1519 | WWW.ARCHITECTURE49.COM

SEAL:







**DEMOLITION LEGEND:**

-  EXISTING TREE TO REMAIN
-  EXISTING TREE TO BE REMOVED
-  TREE PROTECTION FENCING

**AREA A - DEVELOPMENT PERMIT TREE RETENTION AND REMOVAL**

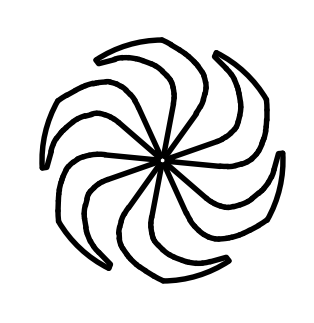
	QTY
NUMBER OF EXISTING TREES	15
NUMBER OF TREES TO BE REMOVED	9
NUMBER OF TREES TO BE RETAINED	6
NUMBER OF PROPOSED TREES	23

SPECIES	NUM	DBH	NOTES	ACTION
NORWAY SPRUCE	272	36	Will be impacted by excavation required to construct proposed barrier curb	RETAIN
NORWAY SPRUCE	273	44	Will be impacted by excavation required to construct proposed barrier curb	RETAIN
NORWAY SPRUCE	274	31	Will be impacted by excavation required to construct proposed barrier curb	RETAIN
NORWAY SPRUCE	275	28	Will be impacted by excavation required to construct proposed barrier curb	RETAIN
NORWAY SPRUCE	276	24	Will be impacted by excavation required to construct proposed barrier curb	RETAIN
NORWAY SPRUCE	277	38	Will be impacted by excavation required to construct proposed barrier curb	RETAIN
NORWAY SPRUCE	278	41	Located within footprint of proposed driveway alignment	Remove
WESTERN REDCEDAR	279	39	Will be heavily impacted by excavation required to construct foundation of proposed new building	Remove
WESTERN REDCEDAR	280	44	Will be heavily impacted by excavation required to construct foundation of proposed new building	Remove
WESTERN REDCEDAR	281	48	M	Remove
LAWSON CYPRESS	282	31	Will be heavily impacted by excavation required to construct foundation of proposed new building	Remove
LAWSON CYPRESS	283	28	Will be heavily impacted by excavation required to construct foundation of proposed new building	Remove
LAWSON CYPRESS	284	37	Will be heavily impacted by excavation required to construct foundation of proposed new building	Remove
LAWSON CYPRESS	285	38	Will be heavily impacted by excavation required to construct foundation of proposed new building	Remove
LAWSON CYPRESS	286	44	Will be heavily impacted by excavation required to construct foundation of proposed new building	Remove

REV	DATE	REVISION DESCRIPTION	BY
I	19/01/15	ISSUED FOR 60% CONSTRUCTION DOCUMENTS	JL
H	18/12/20	ISSUED FOR 40% CONSTRUCTION DOCUMENTS	JL
G	18/12/23	ISSUED FOR DEVELOPMENT PERMIT	JL
F	18/11/27	AJDP SUBMISSION	JL
E	18/11/26	100% DESIGN DEVELOPMENT	JL
D	18/11/21	IN PROGRESS REVIEW SET	JL
REV	DATE	REVISION DESCRIPTION	BY

**TRIUMF** Canada's National Laboratory for Particle and Nuclear Physics 4004 Westbrook Mall | Vancouver BC | Canada V6T-2A3



DESIGNED	JL	INSTITUTE FOR ADVANCED MEDICAL ISOTOPES (IAM)		
DRAWN	LN	TREE PROTECTION AND REMOVAL PLAN (TREE SURVEY)		
CHECKED	JL	LANDSCAPE ARCHITECTURE		
WR #	PLOT SCALE 1:200	JOB NO.	DWG NO.	REV.
APPROVED	DATE 2018/12/21	189-00175-00	17902 (L102)	H

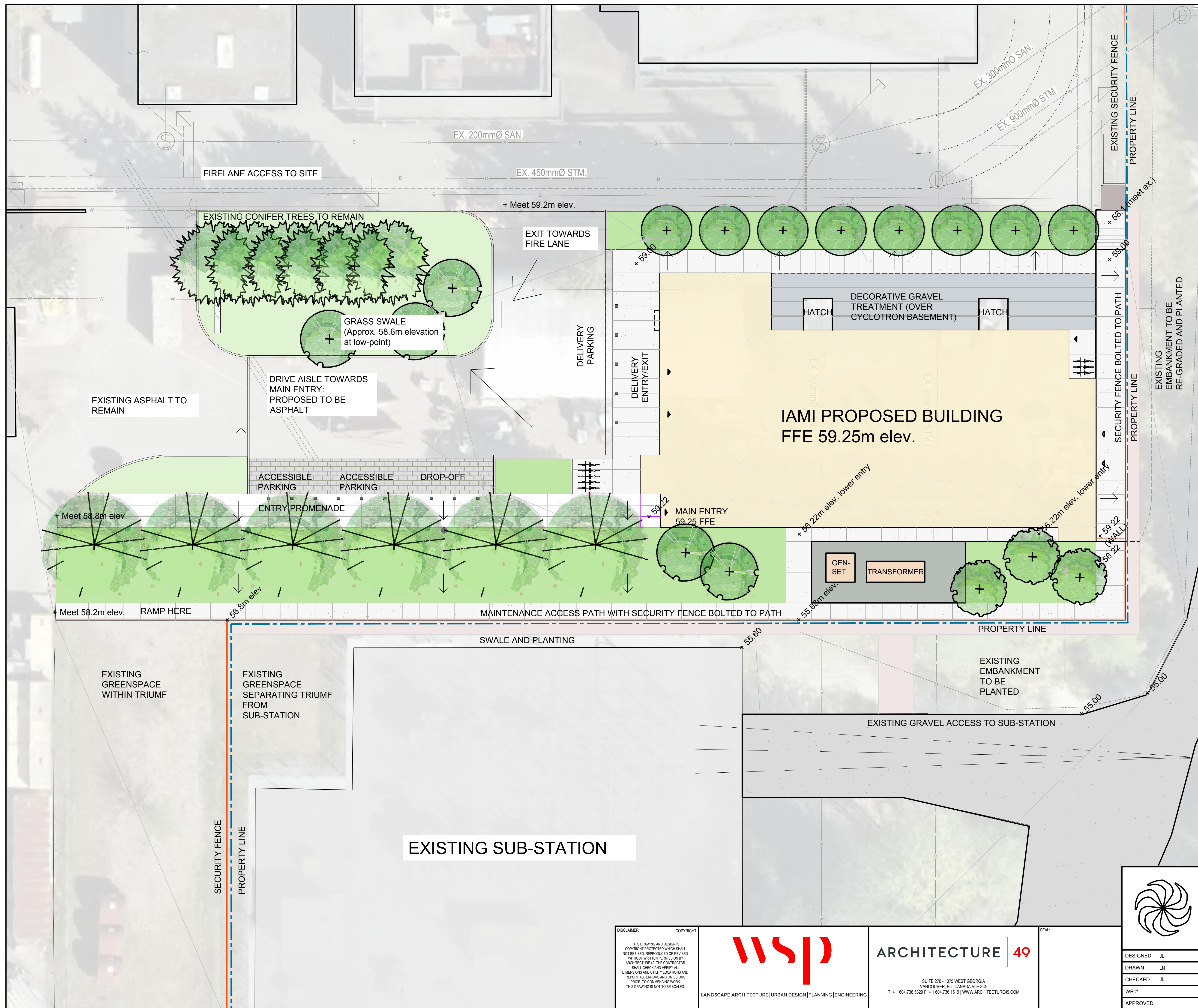
DISCLAIMER: COPYRIGHT  
THIS DRAWING AND DESIGN IS COPYRIGHT PROTECTED WHICH SHALL NOT BE USED, REPRODUCED OR REVISED WITHOUT WRITTEN PERMISSION BY ARCHITECTURE 49. THE CONTRACTOR SHALL CHECK AND VERIFY ALL DIMENSIONS AND UTILITY LOCATIONS AND REPORT ALL ERRORS AND OMISSIONS PRIOR TO COMMENCING WORK. THIS DRAWING IS NOT TO BE SCALED.



**ARCHITECTURE 49**  
SUITE 270 - 1075 WEST GEORGIA  
VANCOUVER, BC CANADA V6E 3C3  
T +1 604.736.5329 F +1 604.736.1519 | WWW.ARCHITECTURE49.COM

SEAL:





- LANDSCAPE PLAN LEGEND:**
- PROPERTY LINE
  - INTERNAL LIMIT OF WORK (TO BE SET AT INTERNAL LIMITS) - SEE TREE PROTECTION PLAN
  - BUILDING ENTRY
  - NEW CHAINLINK SECURITY FENCE MEETS EXISTING FENCE (ALIGNED WITH 2018 NEW PROPERTY LINE MODIFICATION) WHERE REQ'D
  - PROPOSED BIKE RACK TO BE STRATEGICALLY LOCATED TO PREVENT CPTED ISSUES AT KEY ENTRIES AND EXITS
  - HARDSCAPE PAVING 1 ENTRY PROMENADE PAVING MEDIUM SAND-BLASTED CONCRETE WITH SAW-CUT PATTERN
  - HARDSCAPE PAVING 2 PARKING PATHWAYS: PERMEABLE PAVERS: STANDARD SERIES 'NATURAL' 60MM TH. UNIT PAVERS FROM ABBOTSFORD CONCRETE (AQUAPAVE)
  - HARDSCAPE PAVING 3 DELIVERY AND DROP-OFF SPACE. TERTIARY WALKWAYS: BROOM FINISHED CONCRETE
  - BOLLARDS (AT PARKING AND DELIVERY SPACES)
  - LIGHTS - TO MATCH CAMPUS STANDARDS

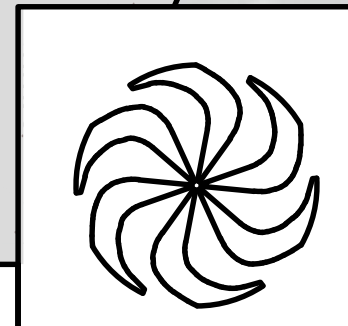
- PLANTING LEGEND:**
- PROPOSED PLANTING: SEE SITE PLAN LABELS
  - PROPOSED LAWN
  - NEW TREE PLANTING: Plant in accordance with Canadian Landscape Standards.
  - EXISTING TREE TO REMAIN: Existing tree to remain protected. Row of coniferous trees to remain protected. Refer to arborist report.

DESIGNED	JL	INSTITUTE FOR ADVANCED MEDICAL ISOTOPES (IAMI)	
DRAWN	LN	SITE PLAN	
CHECKED	JL	LANDSCAPE ARCHITECTURE	
WR #	PLOT SCALE 1:150	JOB NO.	DWG NO.
APPROVED	DATE 2018/12/21	189-00175-00	17903 (L103)
REV		H	

DISCLAIMER: THIS DRAWING AND DESIGN IS COPYRIGHT PROTECTED WHICH SHALL NOT BE REPRODUCED OR REISSUED WITHOUT WRITTEN PERMISSION BY ARCHITECTURE 49. THE CONTRACTOR SHALL CHECK AND VERIFY ALL DIMENSIONS AND UTILITY LOCATIONS AND REPORT ALL ERRORS AND OMISSIONS PRIOR TO COMMENCING WORK. THIS DRAWING IS NOT TO BE SCALED.

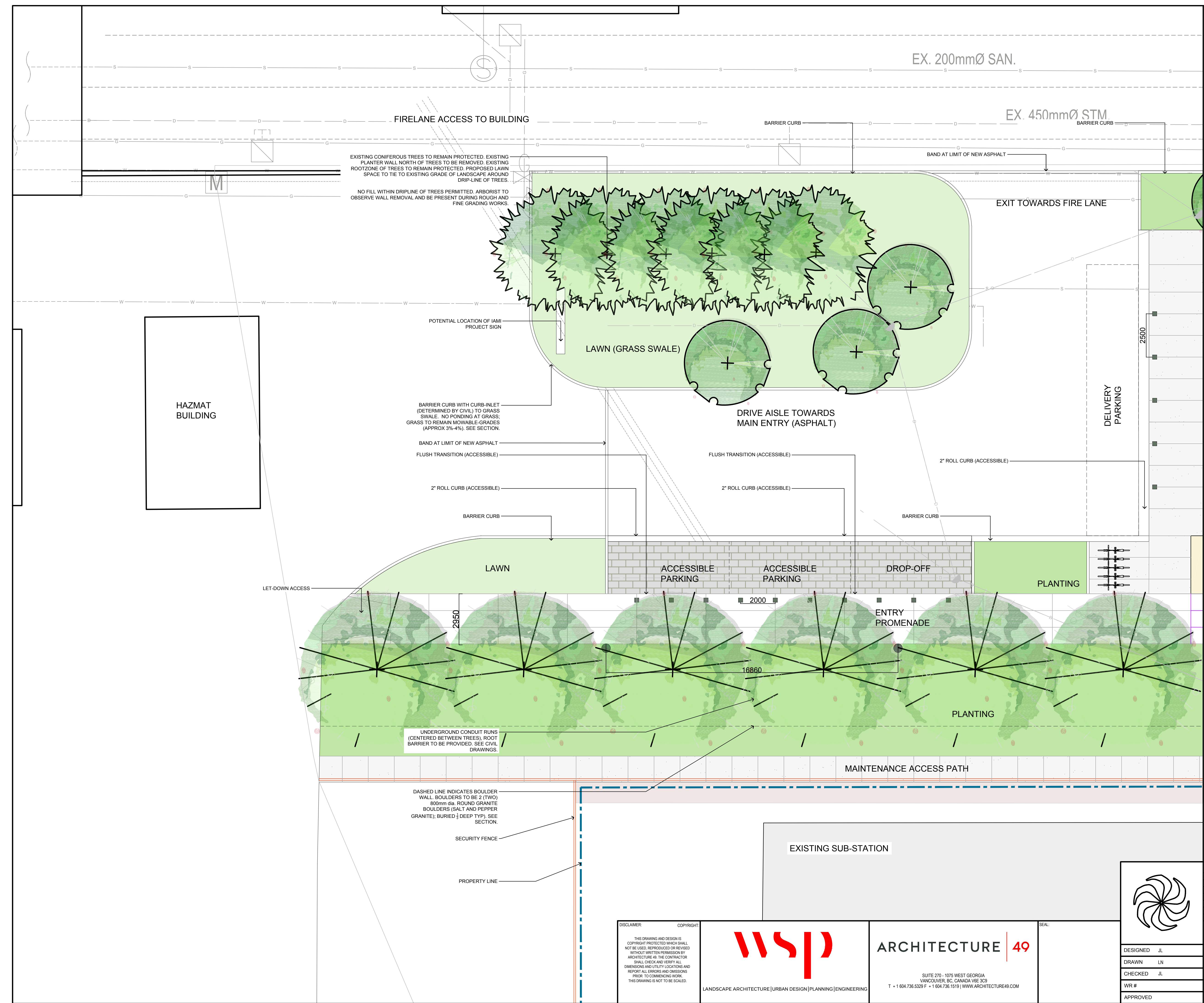
**ARCHITECTURE 49**

SUITE 270 - 1075 WEST GEORGIA  
VANCOUVER, BC CANADA V6E 3C3  
T +1 604.736.5329 F +1 604.736.1519 | WWW.ARCHITECTURE49.COM



**TRIUMF** Canada's National Laboratory for Particle and Nuclear Physics 4004 Westbrook Mall | Vancouver BC | Canada V6T-2A3





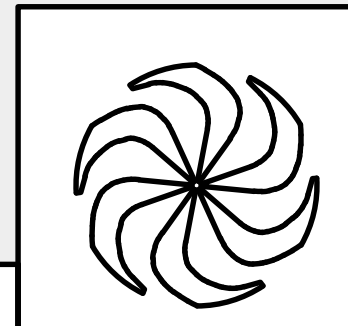
- LANDSCAPE PLAN LEGEND:**
- PROPERTY LINE
  - INTERNAL LIMIT OF WORK (TO BE SET AT INTERNAL LIMITS) - SEE TREE PROTECTION PLAN
  - BUILDING ENTRY
  - NEW CHAINLINK SECURITY FENCE MEETS EXISTING FENCE (ALIGNED WITH 2018 NEW PROPERTY LINE MODIFICATION) WHERE REQ'D
  - PROPOSED BIKE RACK TO BE STRATEGICALLY LOCATED TO PREVENT CPTED ISSUES AT KEY ENTRIES AND EXITS
  - HARDSCAPE PAVING 1 ENTRY PROMENADE PAVING MEDIUM SAND-BLASTED CONCRETE WITH SAW-CUT PATTERN
  - HARDSCAPE PAVING 2 PARKING PATHWAYS: PERMEABLE PAVERS: STANDARD SERIES 'NATURAL' 60MM TH. UNIT PAVERS FROM ABBOTSFORD CONCRETE (AQUAPAVE)
  - HARDSCAPE PAVING 3 DELIVERY AND DROP-OFF SPACE, TERTIARY WALKWAYS: BROOM FINISHED CONCRETE
  - BOLLARDS (AT PARKING AND DELIVERY SPACES)
  - LIGHTS - TO MATCH CAMPUS STANDARDS

- PLANTING LEGEND:**
- PROPOSED PLANTING: SEE SITE PLAN LABELS
  - PROPOSED LAWN
  - NEW TREE PLANTING: Plant in accordance with Canadian Landscape Standards.
  - EXISTING TREE TO REMAIN: Existing tree to remain protected. Row of coniferous trees to remain protected. Refer to arborist report.

DESIGNED	JL	INSTITUTE FOR ADVANCED MEDICAL ISOTOPES (IAM)	
DRAWN	LN	PLAN ENLARGEMENT 1	
CHECKED	JL	LANDSCAPE ARCHITECTURE	
WR #	PLOT SCALE 1:100	JOB NO.	DWG NO.
APPROVED	DATE 2018/12/21	169-00175-00	17904 (L104)
REV		H	

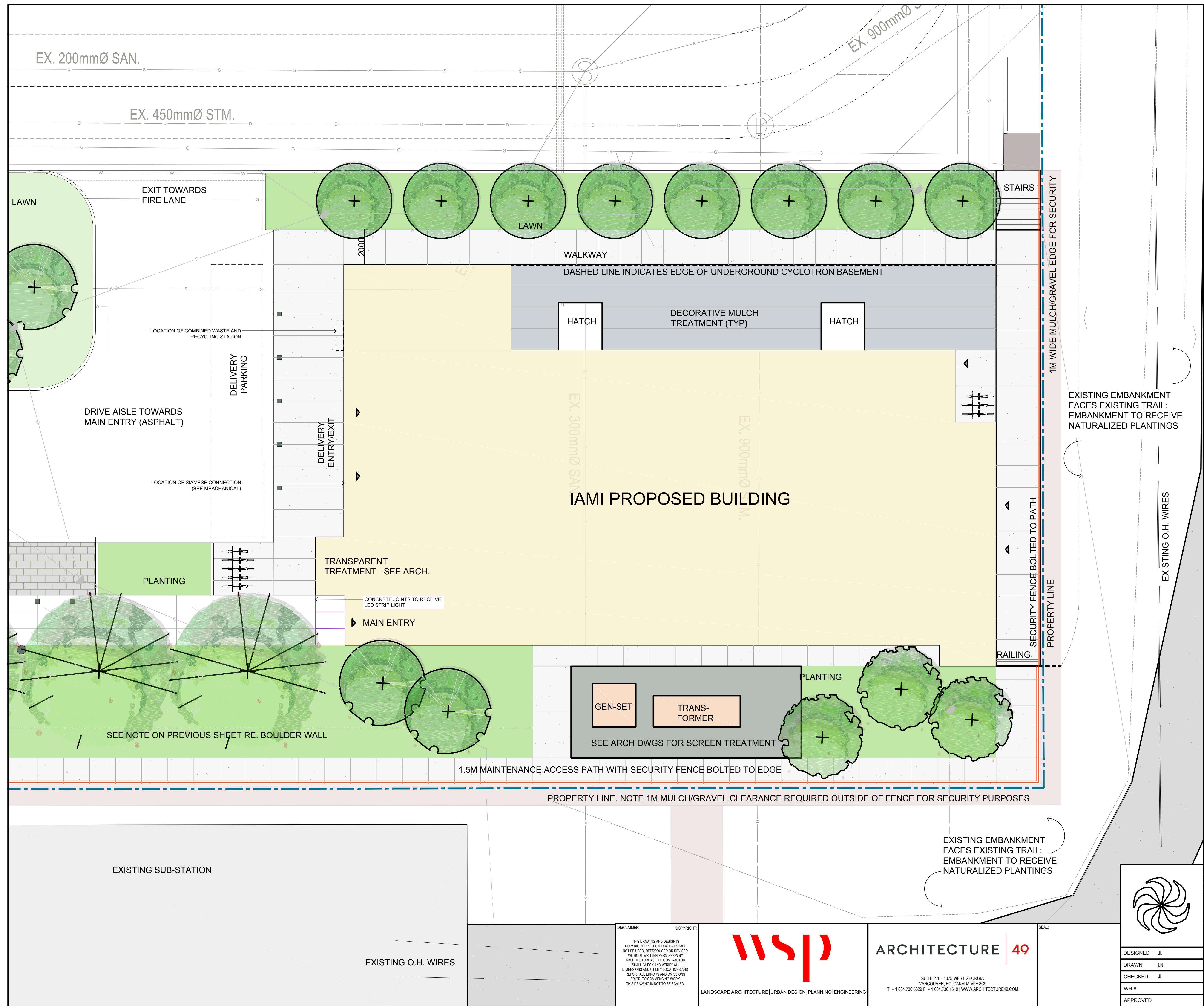
DISCLAIMER: COPYRIGHT ARCHITECTURE 49  
 THIS DRAWING AND DESIGN IS COPYRIGHT PROTECTED WHICH SHALL NOT BE REPRODUCED OR REUSED WITHOUT WRITTEN PERMISSION BY ARCHITECTURE 49. THE CONTRACTOR SHALL CHECK AND VERIFY ALL DIMENSIONS AND UTILITY LOCATIONS AND REPORT ALL ERRORS AND OMISSIONS PRIOR TO COMMENCING WORK. THIS DRAWING IS NOT TO BE SCALED.

**ARCHITECTURE 49**  
 SUITE 270 - 1075 WEST GEORGIA  
 VANCOUVER, BC CANADA V6E 3C3  
 T +1 604.736.5329 F +1 604.736.1519 | WWW.ARCHITECTURE49.COM



**TRIUMF**  
 Canada's National Laboratory for Particle and Nuclear Physics  
 4004 Westbrook Mall | Vancouver BC | Canada V6T-2A3





- LANDSCAPE PLAN LEGEND:**
- PROPERTY LINE
  - INTERNAL LIMIT OF WORK (TO BE SET AT INTERNAL LIMITS) - SEE TREE PROTECTION PLAN
  - BUILDING ENTRY
  - NEW CHAINLINK SECURITY FENCE MEETS EXISTING FENCE (ALIGNED WITH 2018 NEW PROPERTY LINE MODIFICATION) WHERE REQ'D
  - PROPOSED BIKE RACK TO BE STRATEGICALLY LOCATED TO PREVENT CPTED ISSUES AT KEY ENTRIES AND EXITS
  - HARDSCAPE PAVING 1  
ENTRY PROMENADE PAVING  
MEDIUM SAND-BLASTED  
CONCRETE WITH SAW-CUT PATTERN
  - HARDSCAPE PAVING 2  
PARKING PATHWAYS: PERMEABLE  
PAVERS: STANDARD SERIES  
'NATURAL' 60MM TH. UNIT PAVERS  
FROM ABBOTSFORD CONCRETE  
(AQUAPAVE)
  - HARDSCAPE PAVING 3  
DELIVERY AND DROP-OFF SPACE.  
TERTIARY WALKWAYS:  
BROOM FINISHED CONCRETE
  - BOLLARDS (AT PARKING  
AND DELIVERY SPACES)
  - LIGHTS - TO MATCH CAMPUS  
STANDARDS

- PLANTING LEGEND:**
- PROPOSED PLANTING:  
SEE SITE PLAN LABELS
  - PROPOSED LAWN
  - NEW TREE PLANTING:  
Plant in accordance with Canadian Landscape  
Standards.
  - EXISTING TREE TO REMAIN:  
Existing tree to remain protected.  
Row of coniferous trees to remain protected.  
Refer to arborist report.

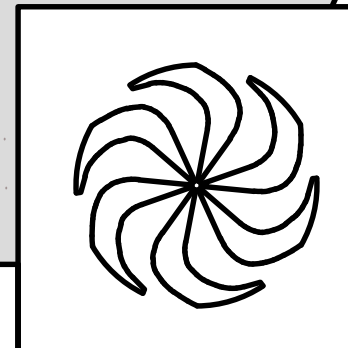
DESIGNED	JL	INSTITUTE FOR ADVANCED MEDICAL ISOTOPES (IAMI)	
DRAWN	LN	PLAN ENLARGEMENT 2	
CHECKED	JL	LANDSCAPE ARCHITECTURE	
WR #	PLOT SCALE 1:100	JOB NO.	DWG NO.
APPROVED	DATE 2018/12/21	189-00175-00	17905 (L105)

DISCLAIMER: COPYRIGHT

THIS DRAWING AND DESIGN IS COPYRIGHT PROTECTED WHICH SHALL NOT BE REPRODUCED OR REUSED WITHOUT WRITTEN PERMISSION BY ARCHITECTURE 49. THE CONTRACTOR SHALL CHECK AND VERIFY ALL DIMENSIONS AND UTILITY LOCATIONS AND REPORT ALL ERRORS AND OMISSIONS PRIOR TO COMMENCING WORK. THIS DRAWING IS NOT TO BE SCALED.

LANDSCAPE ARCHITECTURE | URBAN DESIGN | PLANNING | ENGINEERING

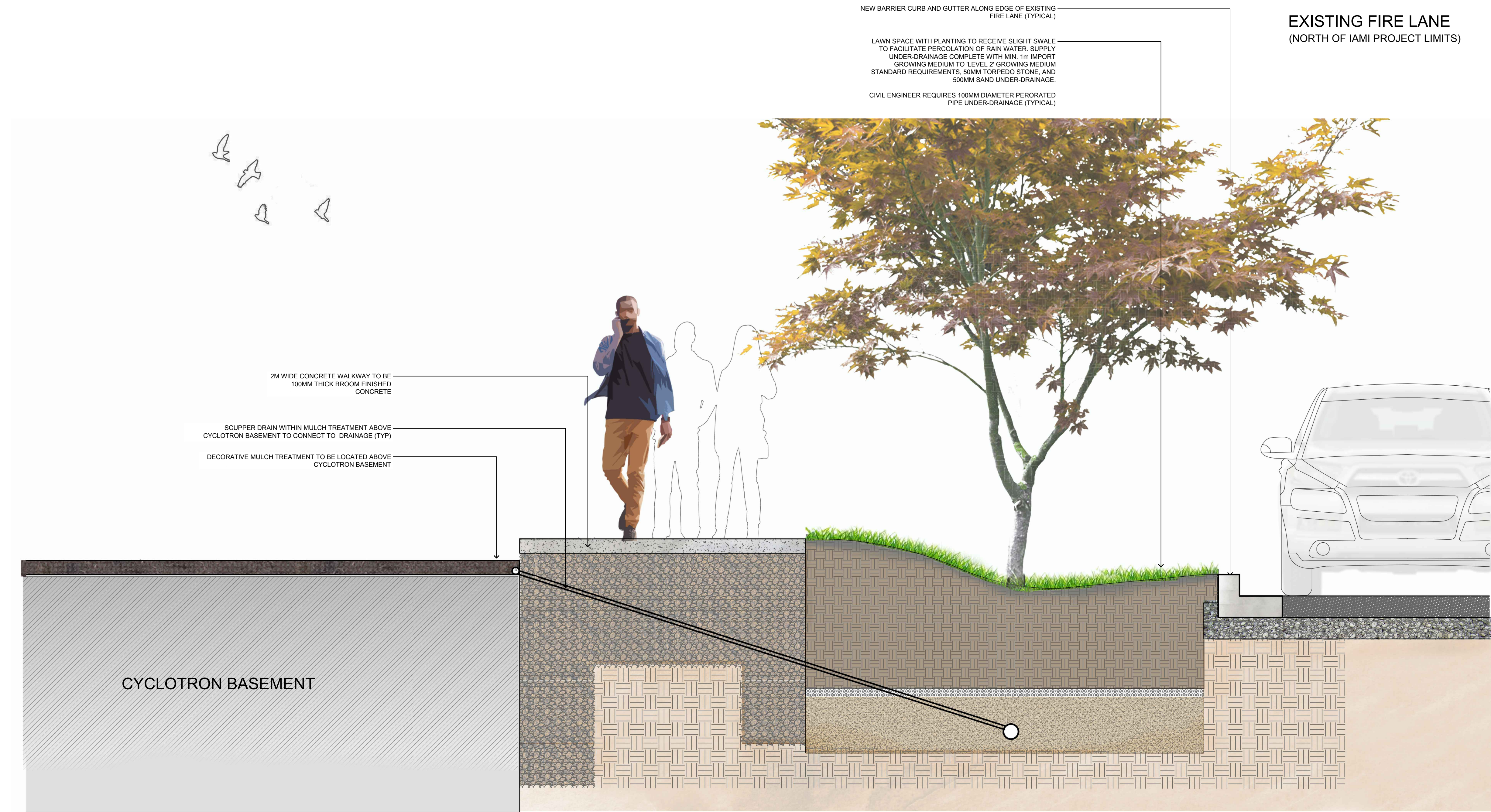
SUITE 270 - 1075 WEST GEORGIA  
VANCOUVER, BC CANADA V6E 3C3  
T +1 604.736.5329 F +1 604.736.1519 | WWW.ARCHITECTURE49.COM



**TRIUMF** Canada's National Laboratory for Particle and Nuclear Physics 4004 Westbrook Mall | Vancouver BC | Canada V6T-2A3



GENERAL NOTES



**1** SECTION 1 - NORTH PLAZA SECTION: SECTION THROUGH DECORATIVE MULCH TREATMENT, NORTH TO FIRE LANE  
 L106 SCALE: NTS

I	19/01/15	ISSUED FOR 60% CONSTRUCTION DOCUMENTS	JL
H	18/12/20	ISSUED FOR 40% CONSTRUCTION DOCUMENTS	JL
G	18/12/03	ISSUED FOR DEVELOPMENT PERMIT	JL
F	18/11/27	AJDP SUBMISSION	JL
E	18/11/26	100% DESIGN DEVELOPMENT	JL
D	18/11/21	IN PROGRESS REVIEW SET	JL
REV	DATE	REVISION DESCRIPTION	BY

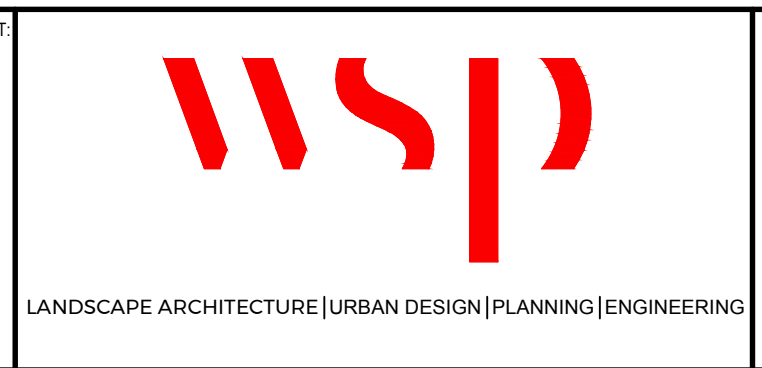
**TRIUMF** Canada's National Laboratory for Particle and Nuclear Physics 4004 Westbrook Mall | Vancouver BC | Canada V6T-2A3

INSTITUTE FOR ADVANCED MEDICAL ISOTOPES (IAMI)

SECTIONS 1  
 LANDSCAPE ARCHITECTURE

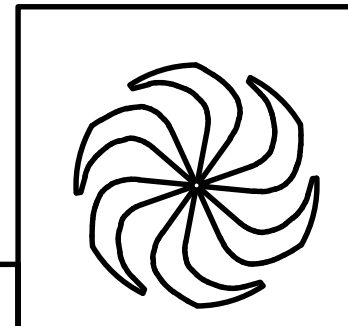
DESIGNED	JL	PLOT SCALE	1:15	JOB NO.		DWG NO.	17906 (L106)	REV.	H
DRAWN	LN	DATE	2018/12/21		189-00175-00				
CHECKED	JL								
WR #									
APPROVED									

DISCLAIMER: COPYRIGHT  
 THIS DRAWING AND DESIGN IS COPYRIGHT PROTECTED WHICH SHALL NOT BE USED, REPRODUCED OR REVERSED WITHOUT WRITTEN PERMISSION BY ARCHITECTURE 49. THE CONTRACTOR SHALL CHECK AND VERIFY ALL DIMENSIONS AND UTILITY LOCATIONS AND REPORT ALL ERRORS AND OMISSIONS PRIOR TO COMMENCING WORK. THIS DRAWING IS NOT TO BE SCALED.



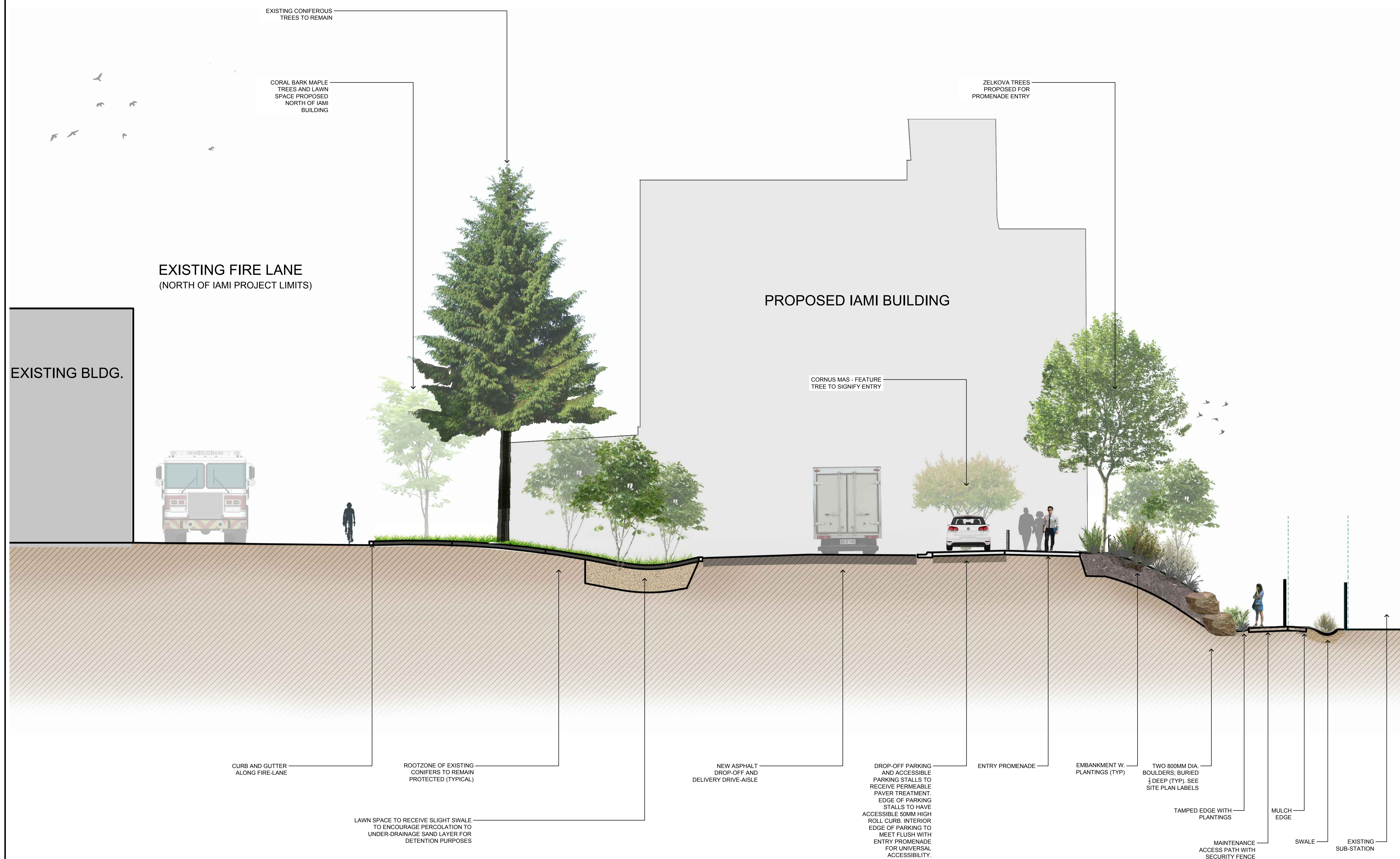
**ARCHITECTURE | 49**  
 SUITE 270 - 1075 WEST GEORGIA  
 VANCOUVER, BC CANADA V6E 3C3  
 T +1 604.736.5329 F +1 604.736.1519 | WWW.ARCHITECTURE49.COM

SEAL:





GENERAL NOTES



EXISTING FIRE LANE  
(NORTH OF IAMI PROJECT LIMITS)

EXISTING BLDG.

PROPOSED IAMI BUILDING

EXISTING CONIFEROUS  
TREES TO REMAIN

CORAL BARK MAPLE  
TREES AND LAWN  
SPACE PROPOSED  
NORTH OF IAMI  
BUILDING

ZELKOVA TREES  
PROPOSED FOR  
PROMENADE ENTRY

CORNUS MAS - FEATURE  
TREE TO SIGNIFY ENTRY

CURB AND GUTTER  
ALONG FIRE-LANE

ROOTZONE OF EXISTING  
CONIFERS TO REMAIN  
PROTECTED (TYPICAL)

LAWN SPACE TO RECEIVE SLIGHT SWALE  
TO ENCOURAGE PERCOLATION TO  
UNDER-DRAINAGE SAND LAYER FOR  
DETENTION PURPOSES

NEW ASPHALT  
DROP-OFF AND  
DELIVERY DRIVE-AISLE

DROP-OFF PARKING  
AND ACCESSIBLE  
PARKING STALLS TO  
RECEIVE PERMEABLE  
PAVER TREATMENT.  
EDGE OF PARKING  
STALLS TO HAVE  
ACCESSIBLE 50MM HIGH  
ROLL CURB. INTERIOR  
EDGE OF PARKING TO  
MEET FLUSH WITH  
ENTRY PROMENADE  
FOR UNIVERSAL  
ACCESSIBILITY.

ENTRY PROMENADE

EMBANKMENT W.  
PLANTINGS (TYP)

TWO 800MM DIA.  
BOULDERS, BURIED  
1 DEEP (TYP). SEE  
SITE PLAN LABELS

TAMPED EDGE WITH  
PLANTINGS

MULCH  
EDGE

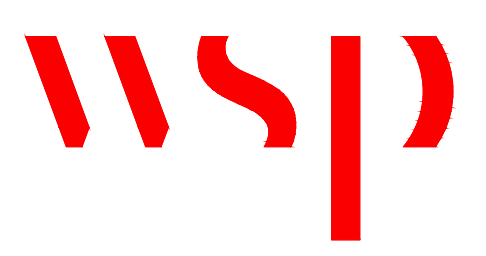
MAINTENANCE  
ACCESS PATH WITH  
SECURITY FENCE

SWALE

EXISTING  
SUB-STATION

1 SECTION 2 - SECTION THROUGH ACCESSIBLE PARKING: FACING EAST TOWARDS IAMI  
L107 SCALE: NTS

DISCLAIMER: COPYRIGHT  
THIS DRAWING AND DESIGN IS  
COPYRIGHT PROTECTED WHICH SHALL  
NOT BE USED, REPRODUCED OR REVISED  
WITHOUT WRITTEN PERMISSION BY  
ARCHITECTURE 49. THE CONTRACTOR  
SHALL CHECK AND VERIFY ALL  
DIMENSIONS AND UTILITY LOCATIONS AND  
REPORT ALL ERRORS AND OMISSIONS  
PRIOR TO COMMENCING WORK.  
THIS DRAWING IS NOT TO BE SCALED.

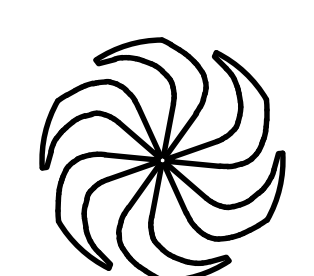


LANDSCAPE ARCHITECTURE | URBAN DESIGN | PLANNING | ENGINEERING

ARCHITECTURE | 49

SUITE 270 - 1075 WEST GEORGIA  
VANCOUVER, BC CANADA V6C 3C3  
T +1 604.736.5329 F +1 604.736.1519 | WWW.ARCHITECTURE49.COM

SEAL:

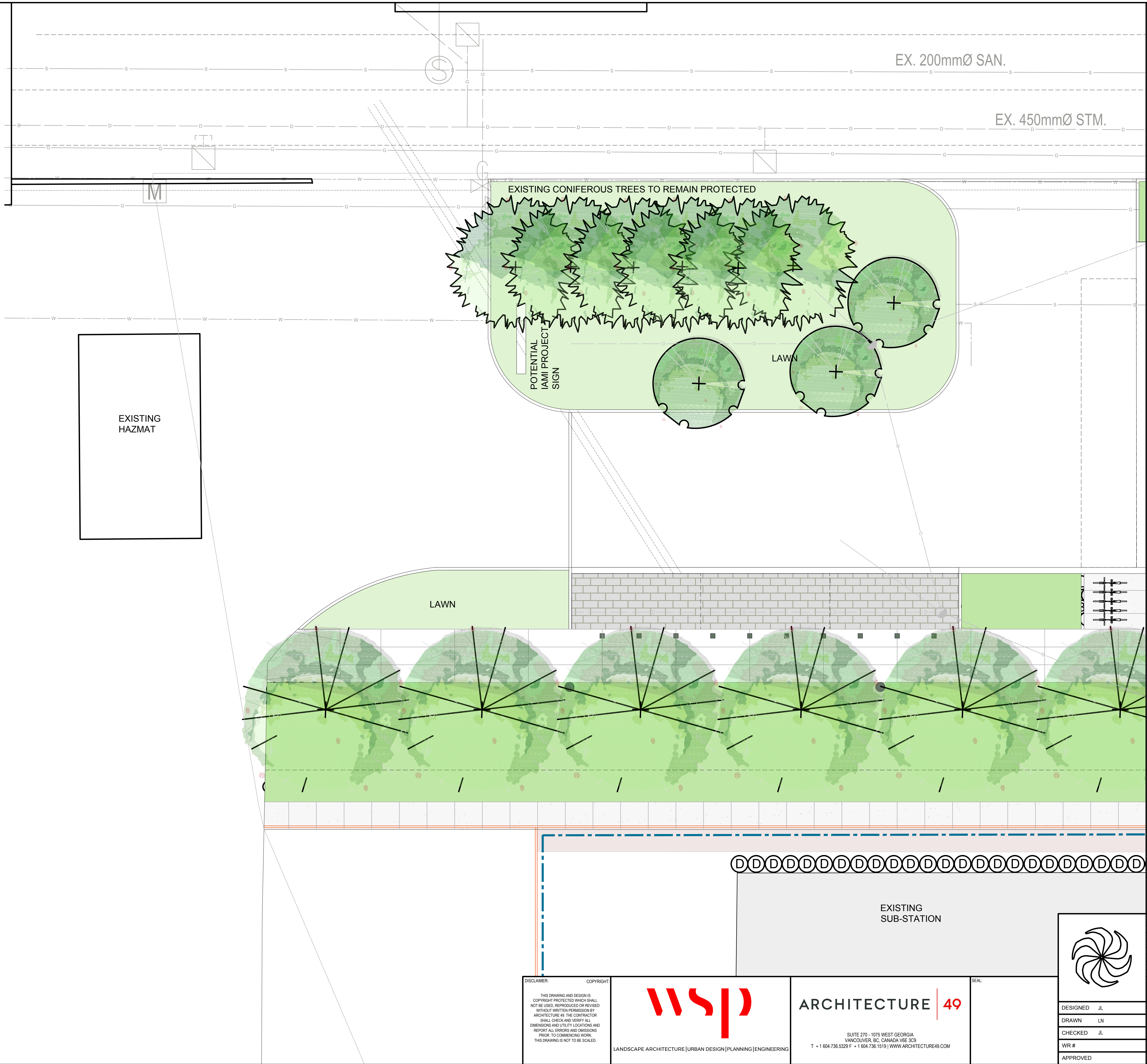


I	19/01/15	ISSUED FOR 60% CONSTRUCTION DOCUMENTS	JL
H	18/12/20	ISSUED FOR 40% CONSTRUCTION DOCUMENTS	JL
G	18/12/03	ISSUED FOR DEVELOPMENT PERMIT	JL
F	18/11/27	AJDP SUBMISSION	JL
E	18/11/26	100% DESIGN DEVELOPMENT	JL
D	18/11/21	IN PROGRESS REVIEW SET	JL
REV	DATE	REVISION DESCRIPTION	BY

TRIUMF Canada's National Laboratory for Particle and Nuclear Physics 4004 Westbrook Mall | Vancouver BC | Canada V6T-2A3

DESIGNED	JL	INSTITUTE FOR ADVANCED MEDICAL ISOTOPES (IAMI)		
DRAWN	LN	SECTIONS 2		
CHECKED	JL	LANDSCAPE ARCHITECTURE		
WR #	PLOT SCALE 1:100	JOB NO.	DWG NO.	REV.
APPROVED	DATE 2018/12/21	189-00175-00	17907 (L107)	H





### PLANT SCHEDULE

SYMBOL	QTY	BOTANICAL NAME	COMMON NAME	SIZE	SPACING	NOTES
<b>TREES</b>						
(S)	3	Amelanchier x grandiflora 'Autumn Brilliance'	Autumn brilliance serviceberry	B&B, 1.2m ht, multi-stem		As shown
(P)	6	Acer palmatum 'Sango-kaku'	Japanese maple	B&B, 1.2m ht, multi-stem		As shown
(Z)	6	Zelkova serrata	Japanese zelkova	B&B, 1.2m ht, full		As shown
(H)	6	Hamamelis virginiana	Witch hazel	B&B, 1.2m ht, multi-stem		
<b>SHRUBS</b>						
(A)	8	Amelanchier alnifolia	Serviceberry	B&B, 1.2m ht, full, multi-stem	2000mm o.c.	
(B)	284	Blechnum spicant	Deer fern	#2 Pot, full	750mm o.c.	
(D)	371	Cornus sanguinea 'Midwinter Fire'	Dogwood 'Midwinter Fire'	#2 Pot, full, multi-stem	900mm o.c.	
(C)	263	Cornus canadensis	Bunchberry	#2 Pot, full, multi-stem	600mm o.c.	
(L)	199	Lonicera involucrata	Black twinberry	#2 Pot, full	750mm o.c.	
(S)	258	Symphoricarpos albus	Snowberry	#2 Pot, full	600mm o.c.	
(V)	29	Viburnum davidii	David viburnum	#2 Pot, full	900mm o.c.	
(H)	30	Holodiscus discolor	Oceanspray	#3 Pot, full	2000mm o.c.	
(M)	101	Mahonia nervosa	Dwarf oregon-grape	#2 Pot, full	900mm o.c.	
(R)	111	Ribes Sanguineum	Flowering Red Currant	#2 Pot, full	900mm o.c.	

NOTE: Refer to Mechanical Drawings for location of hose bibs for watering plants and washing walkways and windows.

CONTRACTOR TO SUPPLY OPTIONAL PRICING ON DESIGN/BUILD IRRIGATION

**OPTIONAL IRRIGATION PRICING SCOPE:**

- A. Provide comprehensive price for design/build irrigation system. Any works needed to complete irrigation to a 100% coverage IIABC designed and installed system to be incidentally included in price for system described below.
- B. Water service stub-out will be from building (water meter included in building). Include separate backflow preventor, pressure reducing valve, service shut-off, and winterization blow-valve in a civil utility box, compliant with IIABC Standards. Provide a concrete pad and stainless steel pedestal cabinet to house the irrigation controller, to a location within the project limits deemed acceptable by the Landscape Architect. Base and sub-base preparation and vault drainage are considered incidental to the price.
- C. Provide a 100% coverage system, including pop-up grass nozzles for lawn spaces, and drip-irrigation for planting beds that are on-site. The off-site embankment is permitted to receive irrigation via pop-up throw-heads. Separate zones are requiring for the off-site embankment zones so that the owner has the flexibility to decommission this zone at a later date.
- D. The design of the system is to be from an IIABC Certified Designer and Installer with minimum 5 years experience. Any revisions to the suggested system design (to be submitted via shop drawing) are considered incidental to the price. The Designer and Installer of the system should have a minimum of 5 years experience in commercial and institutional landscape projects in the Lower Mainland. Commissioning related meetings and costs, including all winterization parts, manuals, caps and ancillary parts are considered incidental to the price.
- E. The system products are to be a Toro Sentinel controller or approved alternate, and either Rainbird or Toro nozzles for remaining products. All products to be installed as per manufacturer's specifications.

I	18/01/15	ISSUED FOR 60% CONSTRUCTION DOCUMENTS	JL
H	18/12/20	ISSUED FOR 40% CONSTRUCTION DOCUMENTS	JL
G	18/12/03	ISSUED FOR DEVELOPMENT PERMIT	JL
F	18/11/27	AUDP SUBMISSION	JL
E	18/11/26	100% DESIGN DEVELOPMENT	JL
D	18/11/21	IN PROGRESS REVIEW SET	JL
REV	DATE	REVISION DESCRIPTION	BY

**TRIUMF** Canada's National Laboratory for Particle and Nuclear Physics 4004 Westbrook Mall | Vancouver BC | Canada V6T-2A3

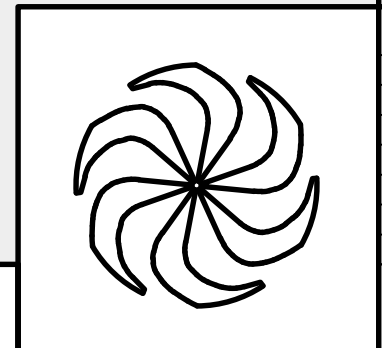
DESIGNED	JL	INSTITUTE FOR ADVANCED MEDICAL ISOTOPES (IAM)		
DRAWN	LN	PLANTING PLAN 1		
CHECKED	JL	LANDSCAPE ARCHITECTURE		
WR #	PLOT SCALE 1:100	JOB NO.	DWG NO.	REV.
APPROVED	DATE 20/8/2021	189-00175-00	17908 (L108)	H

DISCLAIMER: THIS DRAWING AND DESIGN IS COPYRIGHT PROTECTED WHICH SHALL NOT BE USED, REPRODUCED OR REVISED WITHOUT WRITTEN PERMISSION BY ARCHITECTURE 49. THE CONTRACTOR SHALL CHECK AND VERIFY ALL DIMENSIONS AND UTILITY LOCATIONS AND REPORT ALL ERRORS AND OMISSIONS PRIOR TO COMMENCING WORK. THIS DRAWING IS NOT TO BE SCALED.

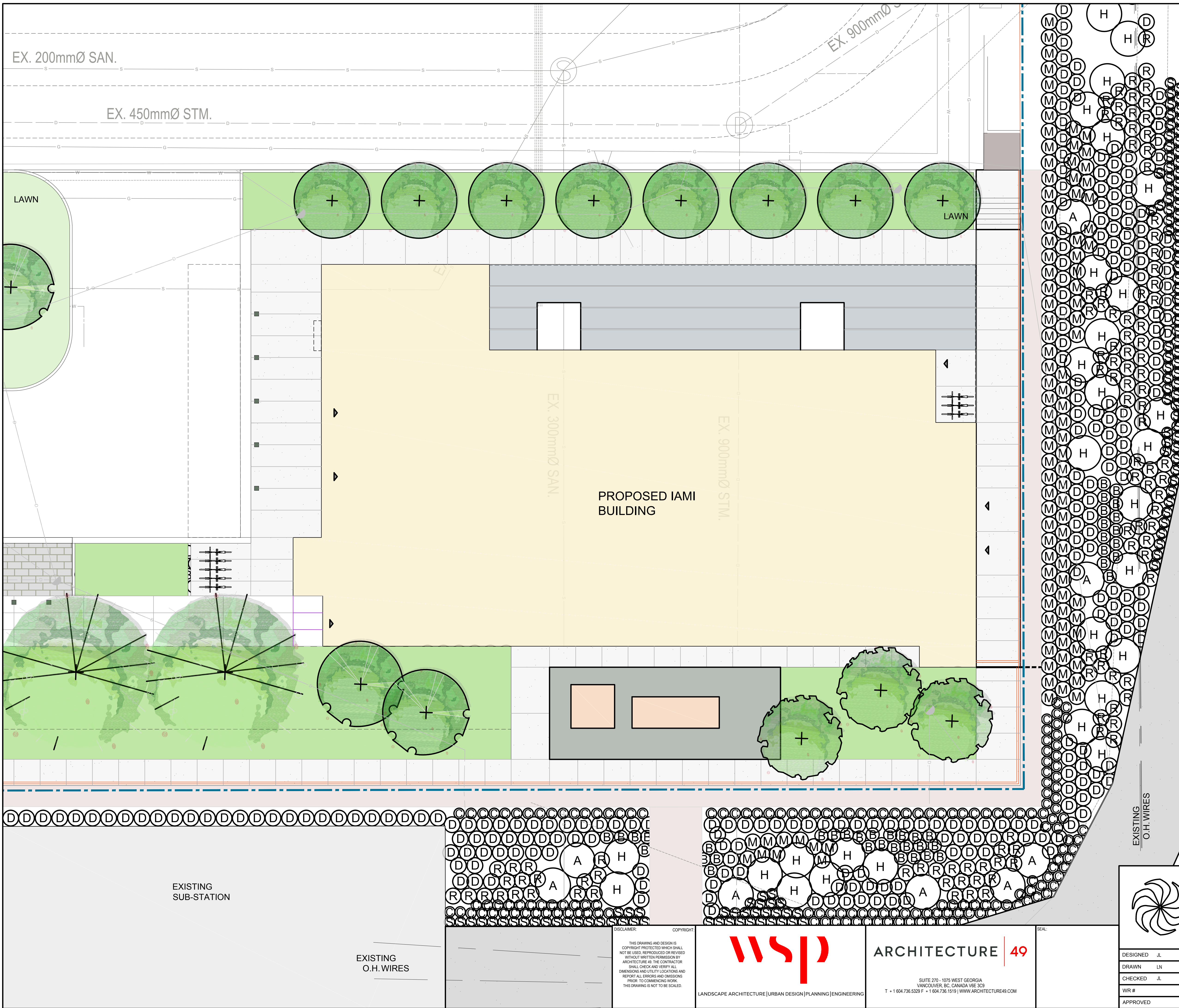


**ARCHITECTURE | 49**  
 SUITE 270 - 1075 WEST GEORGIA  
 VANCOUVER, BC CANADA V6E 3C3  
 T +1 604.736.5329 F +1 604.736.1519 | WWW.ARCHITECTURE49.COM

SEAL:







### PLANT SCHEDULE

SYMBOL	QTY	BOTANICAL NAME	COMMON NAME	SIZE	SPACING	NOTES
<b>TREES</b>						
(3)	3	Amelanchier x grandiflora 'Autumn Brilliance'	Autumn brilliance serviceberry	B&B, 1.2m ht, multi-stem	As shown	
(5)	5	Acer palmatum 'Sango-kaku'	Japanese maple	B&B, 1.2m ht, multi-stem	As shown	
(6)	6	Zelkova serrata	Japanese zelkova	B&B, 1.2m ht, full	As shown	
(7)	6	Hamamelis virginiana	Witch hazel	B&B, 1.2m ht, multi-stem		
<b>SHRUBS</b>						
(A)	8	Amelanchier alnifolia	Serviceberry	B&B, 1.2m ht, full, multi-stem	2000mm o.c.	
(B)	284	Blechnum spicant	Deer fern	#2 Pot, full	750mm o.c.	
(D)	371	Cornus sanguinea 'Midwinter Fire'	Dogwood 'Midwinter Fire'	#2 Pot, full, multi-stem	900mm o.c.	
(E)	263	Cornus canadensis	Bunchberry	#2 Pot, full, multi-stem	600mm o.c.	
(F)	199	Lonicera involucrata	Black twinberry	#2 Pot, full	750mm o.c.	
(G)	258	Symphoricarpos albus	Snowberry	#2 Pot, full	600mm o.c.	
(I)	29	Viburnum davidii	David viburnum	#2 Pot, full	900mm o.c.	
(H)	30	Holodiscus discolor	Oceanspray	#3 Pot, full	2000mm o.c.	
(M)	101	Mahonia nervosa	Dwarf oregon-grape	#2 Pot, full	900mm o.c.	
(R)	111	Ribes Sanguineum	Flowering Red Currant	#2 Pot, full	900mm o.c.	

1	19/01/15	ISSUED FOR 60% CONSTRUCTION DOCUMENTS	JL
H	18/12/20	ISSUED FOR 40% CONSTRUCTION DOCUMENTS	JL
G	18/12/03	ISSUED FOR DEVELOPMENT PERMIT	JL
F	18/11/27	AUDP SUBMISSION	JL
E	18/11/26	100% DESIGN DEVELOPMENT	JL
D	18/11/21	IN PROGRESS REVIEW SET	JL
REV	DATE	REVISION DESCRIPTION	BY

**TRIUMF** Canada's National Laboratory for Particle and Nuclear Physics 4004 Westbrook Mall | Vancouver BC | Canada V6T-2A3

INSTITUTE FOR ADVANCED MEDICAL ISOTOPES (IAMI)  
 PLANTING PLAN 2  
 LANDSCAPE ARCHITECTURE

DESIGNED	JL	PLOT SCALE	1:100	JOB NO.		DWG NO.	17909 (L109)	REV.	H
DRAWN	LN	DATE	20/8/2021		189-00175-00				
CHECKED	JL								
WR #									
APPROVED									

DISCLAIMER: COPYRIGHT

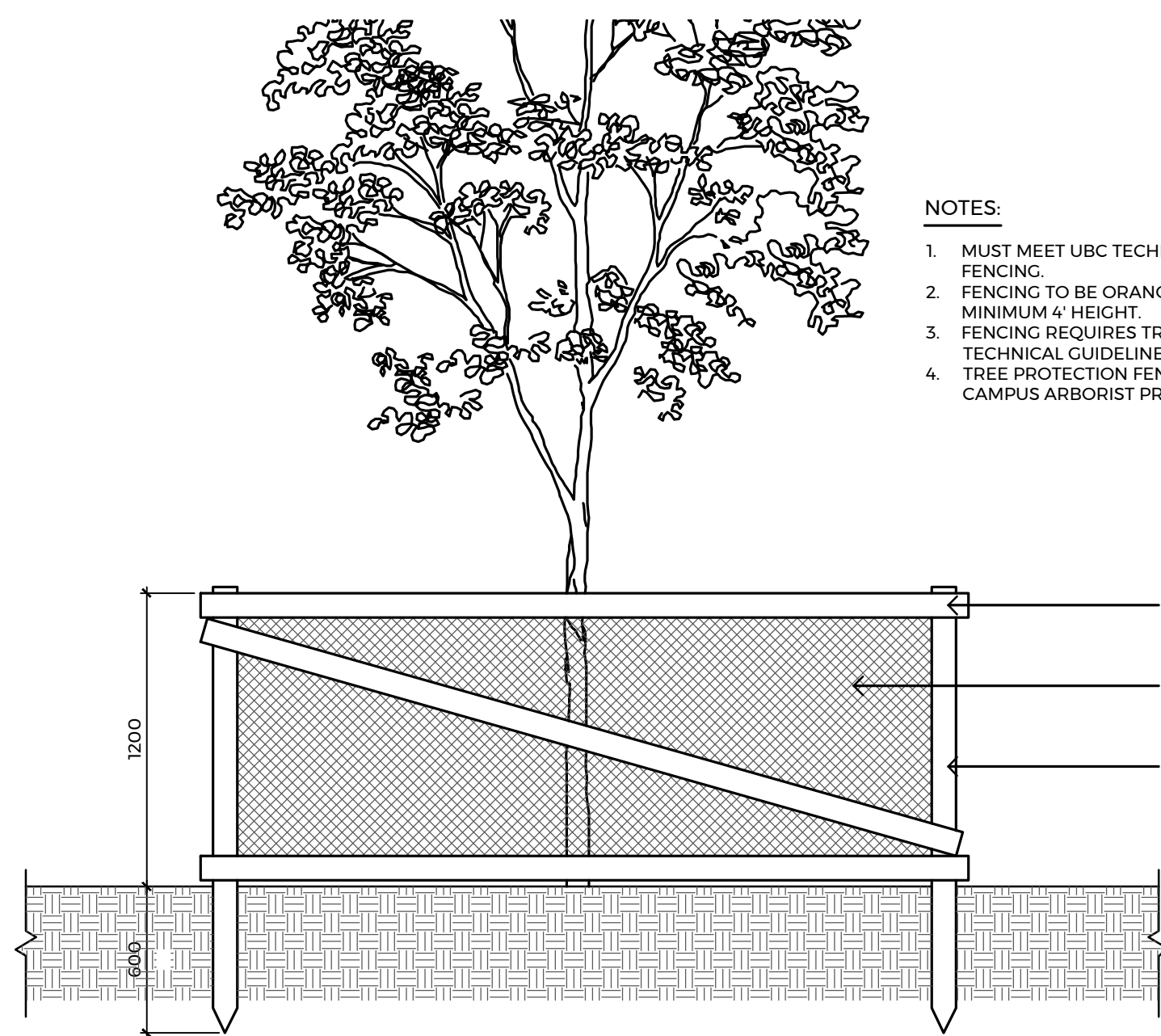
THIS DRAWING AND DESIGN IS COPYRIGHT PROTECTED WHICH SHALL NOT BE USED, REPRODUCED OR REVISED WITHOUT WRITTEN PERMISSION BY ARCHITECTURE 49. THE CONTRACTOR SHALL CHECK AND VERIFY ALL DIMENSIONS AND UTILITY LOCATIONS AND REPORT ALL ERRORS AND OMISSIONS PRIOR TO COMMENCING WORK. THIS DRAWING IS NOT TO BE SCALED.

**WSP** ARCHITECTURE | 49

LANDSCAPE ARCHITECTURE | URBAN DESIGN | PLANNING | ENGINEERING

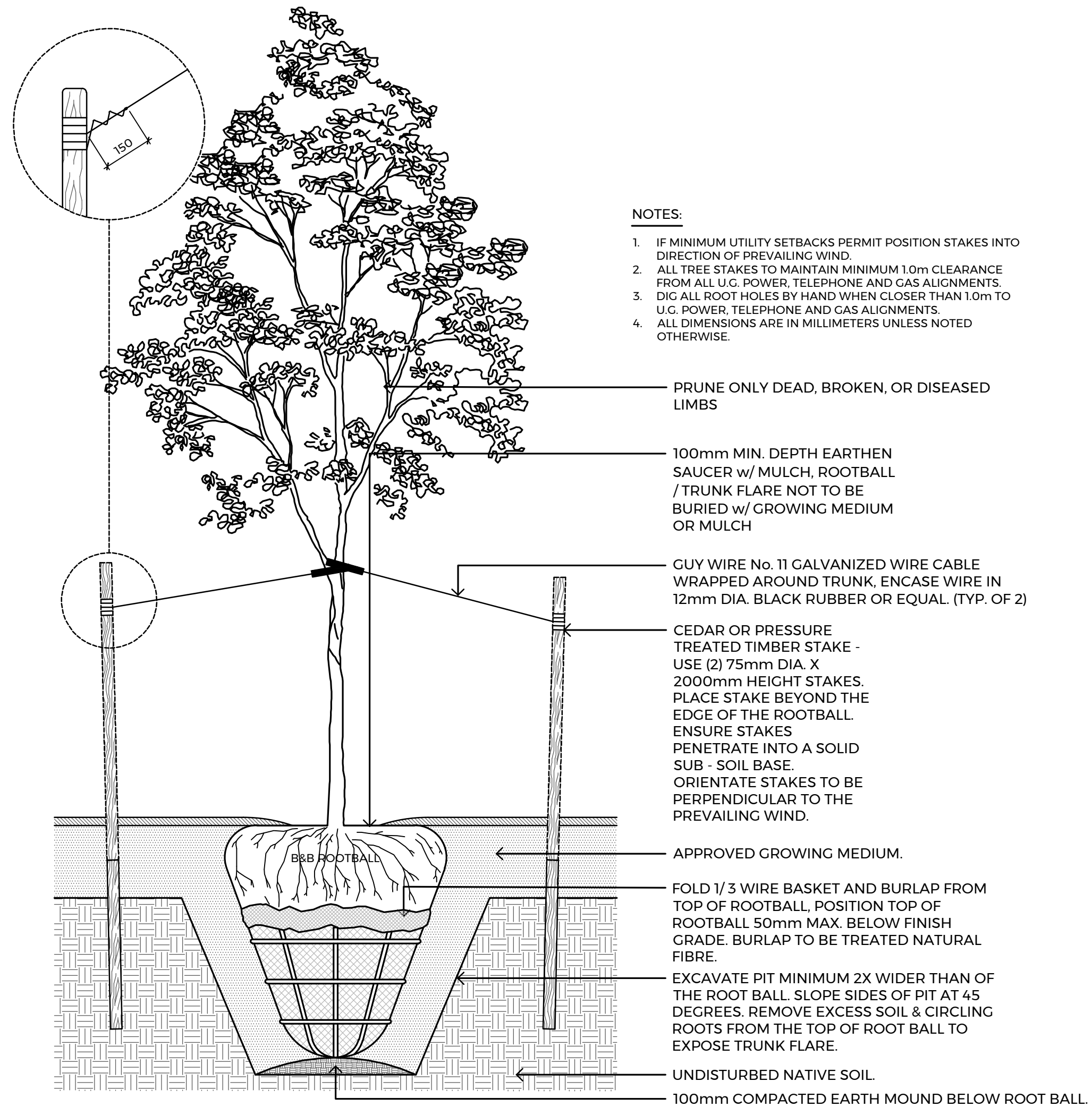
SUITE 270 - 1075 WEST GEORGIA  
 VANCOUVER, BC CANADA V6E 3C3  
 T +1 604.736.5329 F +1 604.736.1519 | WWW.ARCHITECTURE49.COM





- NOTES:**
- MUST MEET UBC TECHNICAL GUIDELINES FOR ALL TREE PROTECTION FENCING.
  - FENCING TO BE ORANGE SNOW FENCING ATTACHED TO 2X4 FRAME. MINIMUM 4' HEIGHT.
  - FENCING REQUIRES TREE PROTECTION SIGNAGE TO MEET UBC TECHNICAL GUIDELINES.
  - TREE PROTECTION FENCING MUST BE APPROVED BY THE UBC CAMPUS ARBORIST PRIOR TO THE COMMENCEMENT OF SITE WORK.

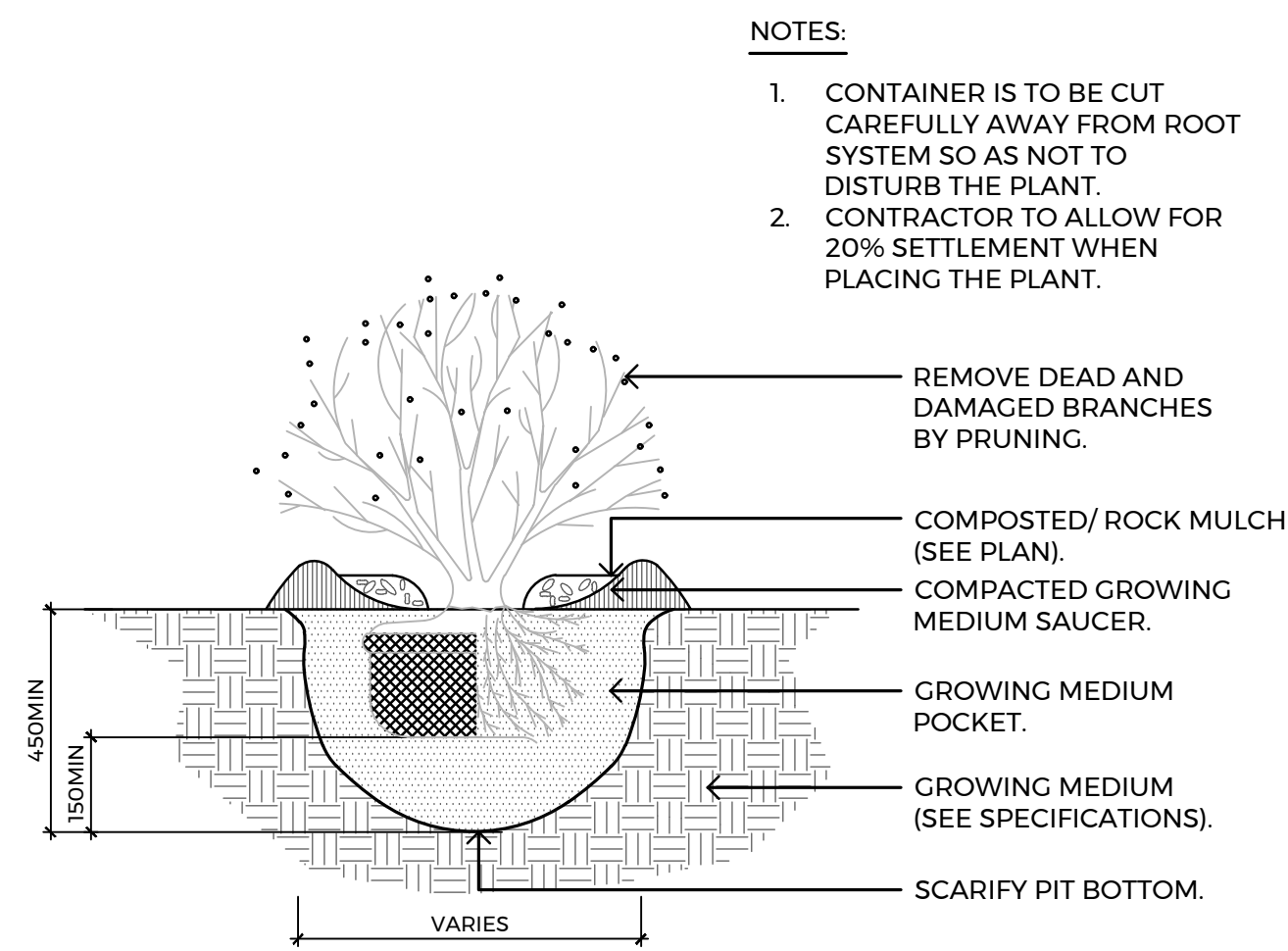
**1 TREE PROTECTION FENCING DETAIL**  
L110 SCALE: 1:25



- NOTES:**
- IF MINIMUM UTILITY SETBACKS PERMIT POSITION STAKES INTO DIRECTION OF PREVAILING WIND.
  - ALL TREE STAKES TO MAINTAIN MINIMUM 1.0m CLEARANCE FROM ALL U.G. POWER, TELEPHONE AND GAS ALIGNMENTS.
  - DIG ALL ROOT HOLES BY HAND WHEN CLOSER THAN 1.0m TO U.G. POWER, TELEPHONE AND GAS ALIGNMENTS.
  - ALL DIMENSIONS ARE IN MILLIMETERS UNLESS NOTED OTHERWISE.

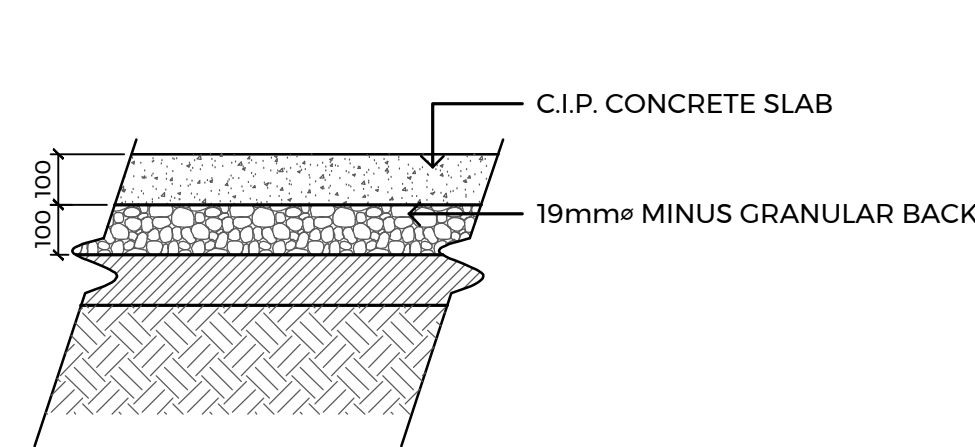
- PRUNE ONLY DEAD, BROKEN, OR DISEASED LIMBS
- 100mm MIN. DEPTH EARTHEN SAUCER w/ MULCH, ROOTBALL / TRUNK FLARE NOT TO BE BURIED w/ GROWING MEDIUM OR MULCH
- CUY WIRE No. 11 GALVANIZED WIRE CABLE WRAPPED AROUND TRUNK. ENCASE WIRE IN 12mm DIA. BLACK RUBBER OR EQUAL. (TYP. OF 2)
- CEDAR OR PRESSURE TREATED TIMBER STAKE - USE (2) 75mm DIA. X 2000mm HEIGHT STAKES. PLACE STAKE BEYOND THE EDGE OF THE ROOTBALL. ENSURE STAKES PENETRATE INTO A SOLID SUB - SOIL BASE. ORIENTATE STAKES TO BE PERPENDICULAR TO THE PREVAILING WIND.
- APPROVED GROWING MEDIUM.
- FOLD 1/3 WIRE BASKET AND BURLAP FROM TOP OF ROOTBALL. POSITION TOP OF ROOTBALL 50mm MAX. BELOW FINISH GRADE. BURLAP TO BE TREATED NATURAL FIBRE.
- EXCAVATE PIT MINIMUM 2X WIDER THAN OF THE ROOT BALL. SLOPE SIDES OF PIT AT 45 DEGREES. REMOVE EXCESS SOIL & CIRCLING ROOTS FROM THE TOP OF ROOT BALL TO EXPOSE TRUNK FLARE.
- UNDISTURBED NATIVE SOIL.
- 100mm COMPACTED EARTH MOUND BELOW ROOT BALL.

**2 TREE PLANTING DETAIL**  
L110 SCALE: 1:25

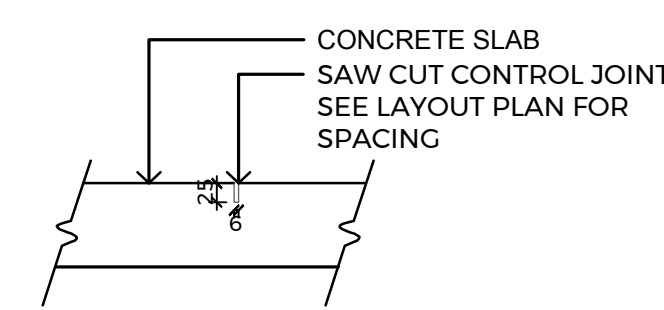


- NOTES:**
- CONTAINER IS TO BE CUT CAREFULLY AWAY FROM ROOT SYSTEM SO AS NOT TO DISTURB THE PLANT.
  - CONTRACTOR TO ALLOW FOR 20% SETTLEMENT WHEN PLACING THE PLANT.

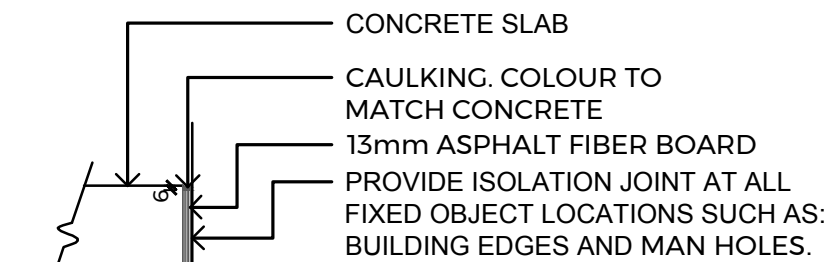
**3 SHRUB PLANTING DETAIL**  
L110 SCALE: 1:15



**5 C.I.P. CONCRETE**  
L110 SCALE: 1:15

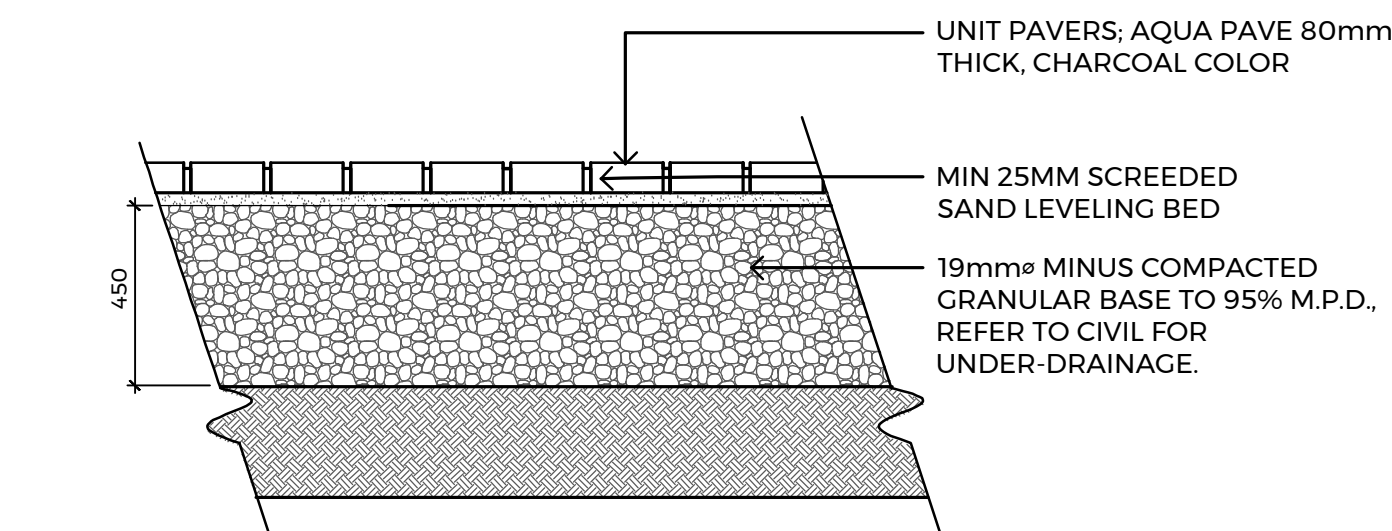


**6 CONTROL JOINT**  
L110 SCALE: 1:10



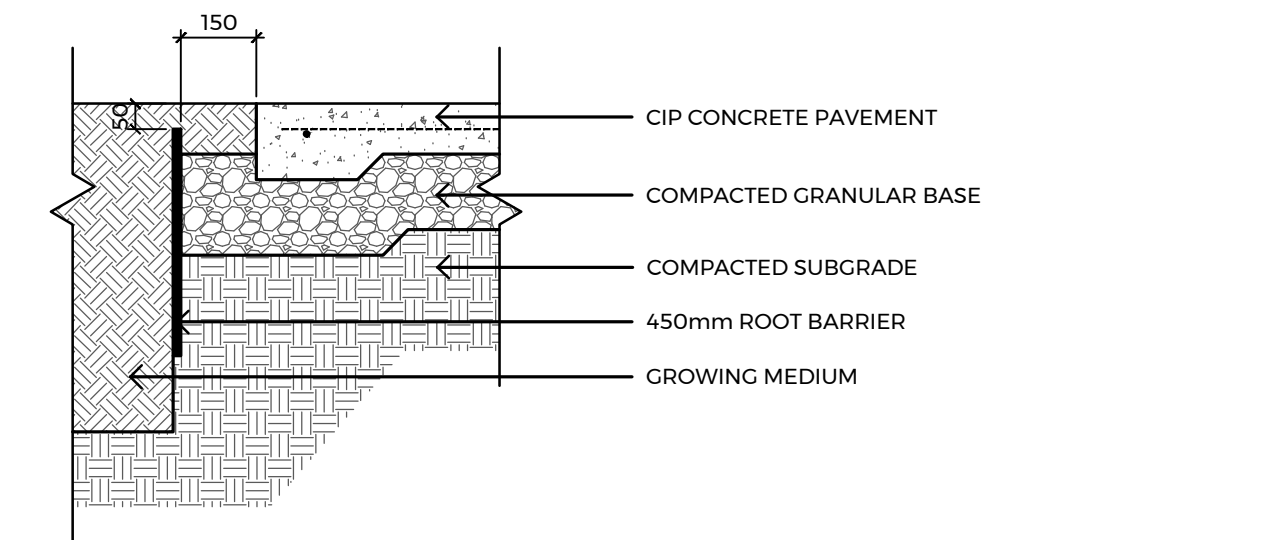
- NOTE:**  
PLACE EXPANSION JOINTS AT 9mm MAX. INTERVALS IN ACCORDANCE TO THE CONTROL JOINTS SHOWN ON THE PLAN & AT ALL FIXED OBJECT LOCATIONS SUCH AS BUILDING EDGES & MANHOLES

**7 EXPANSION JOINT**  
L110 SCALE: 1:10



- NOTES:**
- INSTALL PAVERS IN HERRINGBONE PATTERN. COMPLETE WITH SOLDIER COURSE SURROUND
  - INSTALL AS PER MANUFACTURERS SPECIFICATIONS

**8 PERMEABLE PAVERS**  
L110 SCALE: 1:15



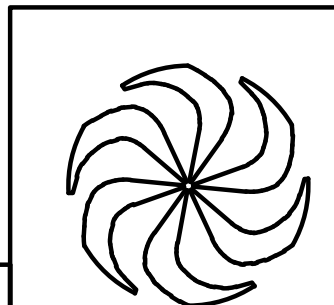
**4 ROOT BARRIER**  
L110 SCALE: 1:15 (ALONG PROMENADE AND EMBANKMENT CABLE TRENCH)

DISCLAIMER: COPYRIGHT  
THIS DRAWING AND DESIGN IS COPYRIGHT PROTECTED WHICH SHALL NOT BE USED, REPRODUCED OR REVISED WITHOUT WRITTEN PERMISSION BY ARCHITECTURE 49. THE CONTRACTOR SHALL CHECK AND VERIFY ALL DIMENSIONS AND UTILITY LOCATIONS AND REPORT ALL ERRORS AND OMISSIONS PRIOR TO COMMENCING WORK. THIS DRAWING IS NOT TO BE SCALED.

**wsp**  
LANDSCAPE ARCHITECTURE | URBAN DESIGN | PLANNING | ENGINEERING

**ARCHITECTURE | 49**  
SUITE 270 - 1075 WEST GEORGIA  
VANCOUVER, BC CANADA V6E 3C3  
T +1 604.736.5329 F +1 604.736.1519 | WWW.ARCHITECTURE49.COM

SEAL:



REV	DATE	REVISION DESCRIPTION	BY
I	19/01/15	ISSUED FOR 60% CONSTRUCTION DOCUMENTS	JL
H	18/12/20	ISSUED FOR 40% CONSTRUCTION DOCUMENTS	JL
G	18/12/03	ISSUED FOR DEVELOPMENT PERMIT	JL
F	18/11/27	AJDP SUBMISSION	JL
E	18/11/26	100% DESIGN DEVELOPMENT	JL
D	18/11/21	IN PROGRESS REVIEW SET	JL

**TRIUMF** Canada's National Laboratory for Particle and Nuclear Physics 4004 Westbrook Mall | Vancouver BC | Canada V6T-2A3

DESIGNED	JL	INSTITUTE FOR ADVANCED MEDICAL ISOTOPES (IAM)		
DRAWN	LN	DETAILS 1		
CHECKED	JL	LANDSCAPE ARCHITECTURE		
WR #	PLOT SCALE	AS NOTED	JOB NO.	DWG NO.
APPROVED	DATE	2018/12/21	189-00175-00	17910 (L110)
				REV. H





**1 BIKE RACK**  
L111 SCALE: N.T.S.

NAME: BROADWAY RACK  
COLOR: GALVANIZED  
SIZE: 60"  
TYPE: BR2H  
DISTRIBUTOR: DERO  
INSTALL AS PER MANUFACTURER'S SPECIFICATIONS



**2 BOLLARD**  
L111 SCALE: N.T.S.

NAME: STAINLESS STEEL BOLLARD  
COLOR: STAINLESS STEEL  
SIZE: 36"  
TYPE: R-8901  
DISTRIBUTOR: RELIANCE FOUNDRY  
INSTALL AS PER MANUFACTURER'S SPECIFICATIONS

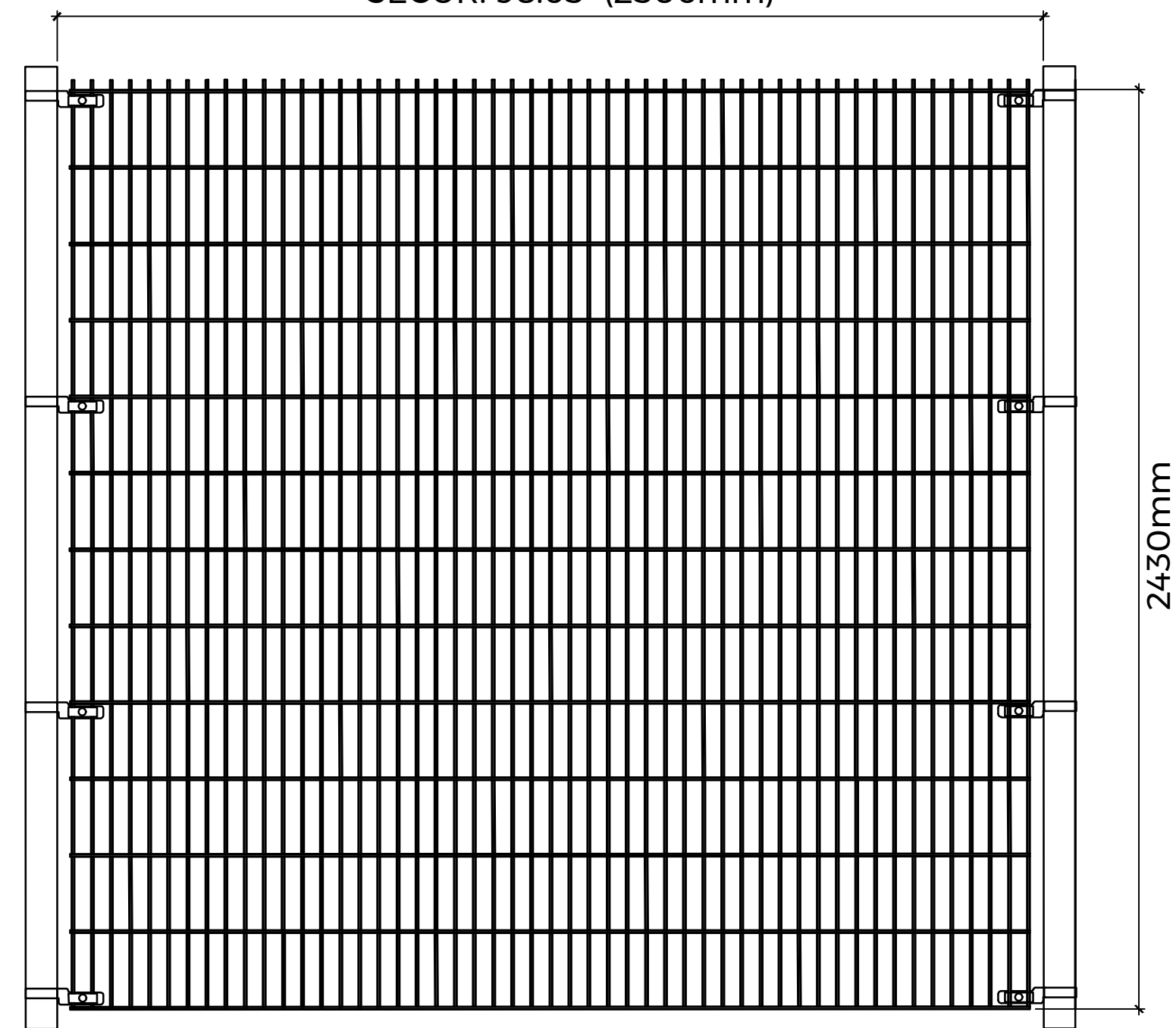


**3 WASTE AND RECYCLING STATION**  
L111 SCALE: N.T.S.

NAME: SELECT RECYCLING SYSTEM  
COLOR: STAINLESS STEEL  
SIZE: 430mmx1720mm  
TYPE: QUADRA UNIT  
DISTRIBUTOR: LANDSCAPE FORMS  
INSTALL AS PER MANUFACTURER'S SPECIFICATIONS

NOTE: PRECISE SIGNAGE TO BE COORDINATED WITH OWNER

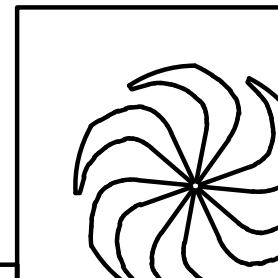
Panel /  
Panneau 8' ELITE & EVOLUTION: 98.62" (2505mm)  
SECUR: 98.65" (2506mm)



NAME: OMEGA II SECUR 8' FENCE  
DOUBLE WIRE FENCE MOUNTED ON SQUARE POSTS  
COLOR: METALLIC SILVER  
TYPE: SECUR DOUBLE WIRE  
DISTRIBUTOR: OMEGA II FENCE SYSTEMS  
INSTALL AS PER MANUFACTURER'S SPECIFICATIONS

NOTE: FOOTING DETAIL FORTHCOMING

**4 OMEGA II SECURE 8' FENCE DETAIL**  
L111 SCALE: 1:15



I	19/01/15	ISSUED FOR 60% CONSTRUCTION DOCUMENTS	JL
H	18/12/20	ISSUED FOR 40% CONSTRUCTION DOCUMENTS	JL
G	18/12/03	ISSUED FOR DEVELOPMENT PERMIT	JL
F	18/11/27	AJDP SUBMISSION	JL
E	18/11/26	100% DESIGN DEVELOPMENT	JL
D	18/11/21	IN PROGRESS REVIEW SET	JL
REV	DATE	REVISION DESCRIPTION	BY

**TRIUMF** Canada's National Laboratory for Particle and Nuclear Physics 4004 Westbrook Mall | Vancouver BC | Canada V6T-2A3

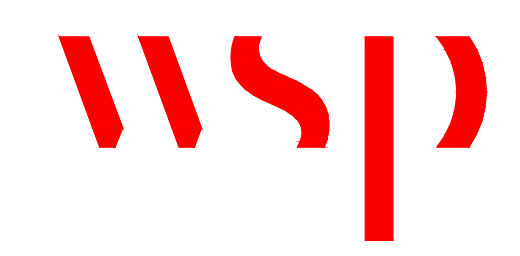
INSTITUTE FOR ADVANCED MEDICAL ISOTOPES (IAM)

DETAILS 2

LANDSCAPE ARCHITECTURE

DESIGNED	JL			REV.	H
DRAWN	LN				
CHECKED	JL				
WR #		PLOT SCALE	AS NOTED	JOB NO.	
APPROVED		DATE	2018/12/21	DWG NO.	17911 (L111)
					189-00175-00

DISCLAIMER: COPYRIGHT  
THIS DRAWING AND DESIGN IS COPYRIGHT PROTECTED WHICH SHALL NOT BE USED, REPRODUCED OR REVISED WITHOUT WRITTEN PERMISSION BY ARCHITECTURE 49. THE CONTRACTOR SHALL CHECK AND VERIFY ALL DIMENSIONS AND UTILITY LOCATIONS AND REPORT ALL ERRORS AND OMISSIONS PRIOR TO COMMENCING WORK. THIS DRAWING IS NOT TO BE SCALED.



**ARCHITECTURE | 49**

SUITE 270 - 1075 WEST GEORGIA  
VANCOUVER, BC, CANADA V6E 3C3  
T +1 604.736.5329 F +1 604.736.1519 | WWW.ARCHITECTURE49.COM

SEAL: