
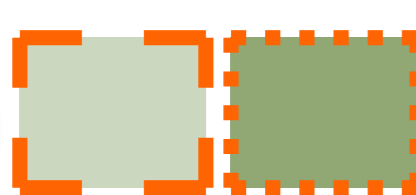


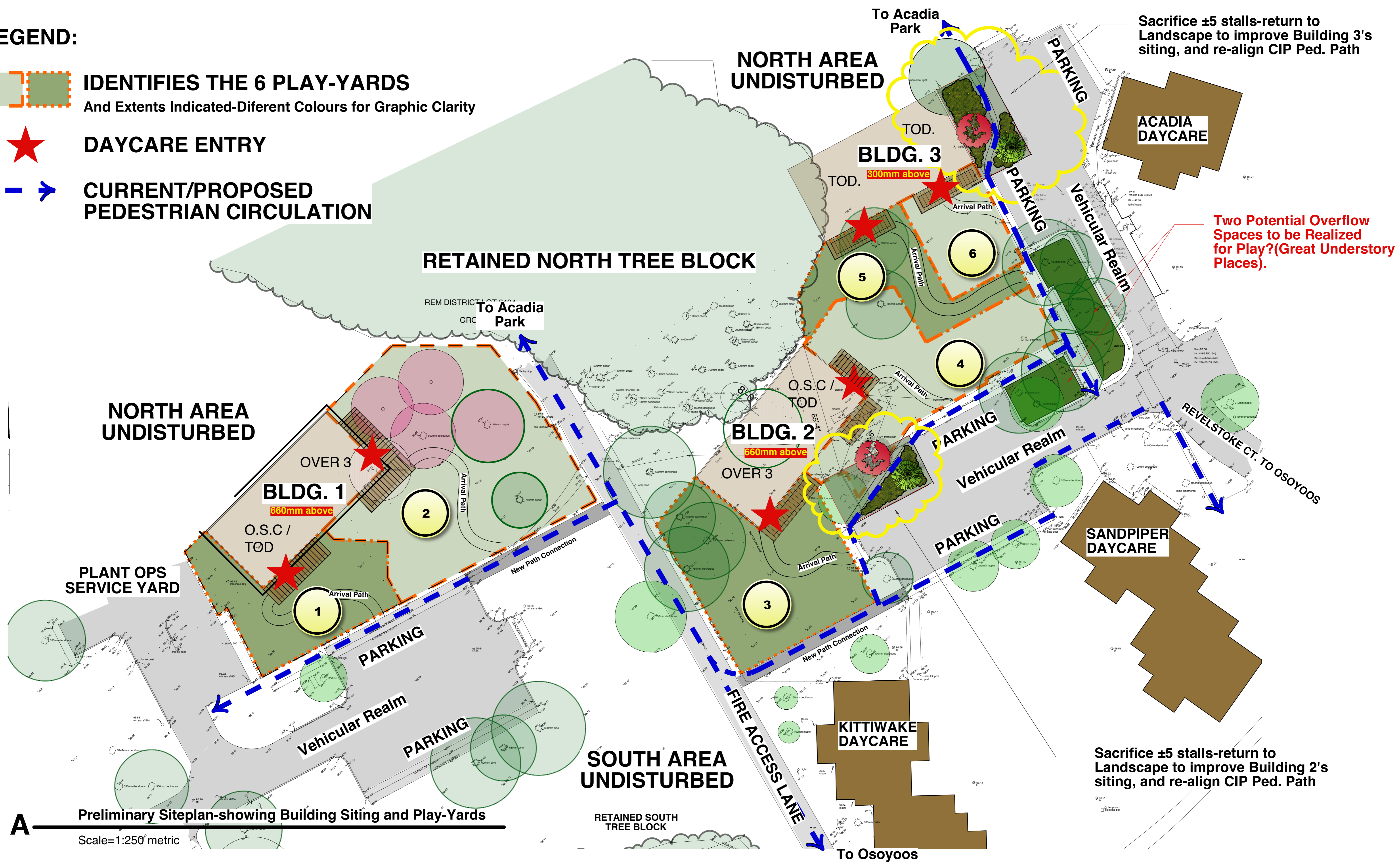


**LEGEND:**

- 

**IDENTIFIES THE 6 PLAY-YARDS**  
 And Extents Indicated-Diferent Colours for Graphic Clarity
- 
**DAYCARE ENTRY**
- 
**CURRENT/PROPOSED PEDESTRIAN CIRCULATION**



Two Potential Overflow Spaces to be Realized for Play?(Great Understory Places).

**A** Preliminary Siteplan-showing Building Siting and Play-Yards  
 Scale=1:250 metric

Sacrifice ±5 stalls-return to Landscape to improve Building 2's siting, and re-align CIP Ped. Path

Sacrifice ±5 stalls-return to Landscape to improve Building 3's siting, and re-align CIP Ped. Path



**3.1 UBC Modular Daycares -Siteplan-All Three Buildings W/ Play-Yards**  
 scale: As Shown

January 10th, 2018