



Site Context-South Campus



1. View North East towards Community Field



2. View East Across Site



3. View South West Across East End of Site



7. View South along West Edge of Site



4. View West from Park onto Community Field

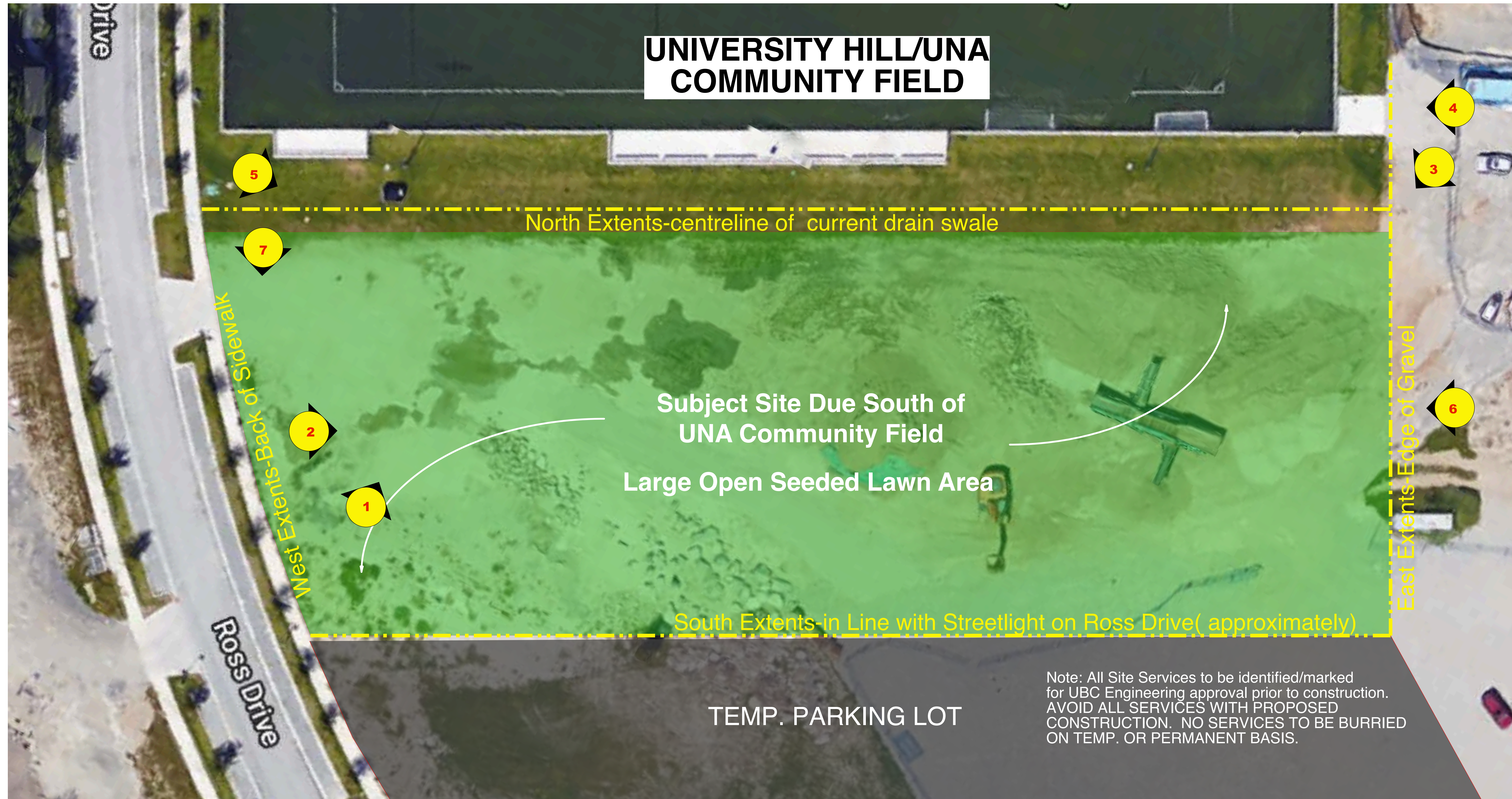


5. View South East across West End of Site



6. View West across Site

SPLASH PARK COMMUNITY PARK SITE



L-1 Existing Conditions-Site Images

Not to Scale

SPLASH PARK COMMUNITY PARK SITE



Sand Volleyball Court-350mm depth beach sand (sorened for larger debris once placed). Placed directly on existing seeded lawn. Enclosed with Beach Logs as shown.

Edging Option A
Beach Logs-vary in size-place as directed and secure from rolling-drill and pin w/ re-bar to Consultant approval as may be required. Place log in 4-6" deep trench. Size of Logs approx. 20" dia. x 12-20' long-as available.

Edging Option B
Mix of Beach Logs and Large Boulders from stockpile at UBC Farms to create perimeter edging around Courts.

Beach Logs-vary in size-place as directed and secure from rolling-drill and pin w/ re-bar to Consultant approval as may be required.

Berms-approx 1.0m Hgt.. with Maintainable 20% Campus Standard Side Slopes along South Edge to provide buffer and ball control with South Parking Lot. Use of local fills capped with minor organics and seeded to establish. (non-irrigated).

Image from Google Earth

April 30th, 2018

L-2 Beach Volleyball Court-Layout Plan with Community Beach/Sand Play

At Scale-Approximatley 1:200 Metric

