

PROJECT TEAM

CLIENT
 UBC Properties Trust
 Suite 101 - 555 Great Northern Way
 Vancouver BC V5T 1E2
 T: 604.731.3103
 F: 604.731.2130
 Contact: Craig Knight
 cknight@ubcproperties.com

ARCHITECT
 Walter Franci Architecture Inc.
 1684 West 2nd Avenue
 Vancouver BC V6J 1H4
 T: 604.688.3252
 F: 604.688.5995
 Contact: Walter Franci, MRAIC, LEED/AP
 walter@wfrancid.com

Public Architecture & Communication
 215 - 309 W Cordova St
 Vancouver BC V6B 1E5
 T: 604.873.4313
 F: 604.873.4323
 Contact: John Wall, MAIBC, OAA, LEED/AP
 C: 604.340.3169
 john@publicdesign.ca

LANDSCAPE ARCHITECT
 Karen Kiest Landscape Architects
 111 West John Street Suite 305
 Seattle, WA 98119
 T: 206.323.6032
 Contact: Karen Kiest
 kkiest@kk-la.com

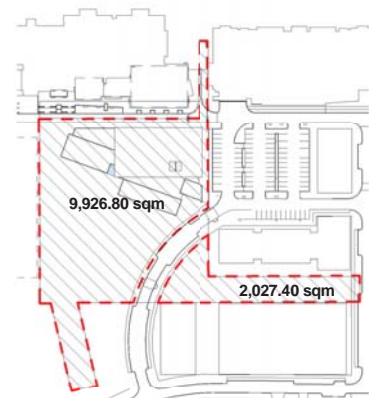
DRAWING LIST - ARCHITECTURAL

- A0.00 Cover Sheet / Project Data
- A0.03 Context Plan
- A0.04 Site Plan
- A0.05 Shadow Study Diagrams
- A0.06 Site Context Elevations
- A0.07 Renderings
- A0.09 Schedules
- A1.01 First Floor Plan
- A1.02 Second Floor Plan
- A1.03 Roof Plan
- A1.04 Daycare Plan
- A3.01 Elevations East + West
- A3.02 Elevations North
- A3.03 Elevations South
- A4.01 Sections
- A4.02 Sections

DRAWING LIST - STRUCTURAL

DRAWING LIST - MECHANICAL

DRAWING LIST - ELECTRICAL



Site Boundary & Area

ADDRESS

UBC Record to provide

LEGAL DESCRIPTION

Pl. F. Plan BCP35352, D.L. 6494, Gp. 1, NWD

Total Site Area: 11,954.20 sqm (9,926.80 + 2,027.40)
 Site Coverage: 1,805.80 sqm (Community Centre)
 645 sqm (Child Care Centre)

Floor Area

Total Net: 2,492.50 sqm
 Total Gross: 2,913 sqm (Community Centre)
 522 sqm (Child Care Centre)

*see table 'Net Floor Area' for breakdown for each use.

Building Height: 11.31 meter (2 Storey Community Centre)
 4.25 meter (1 Storey Child Care Centre)

Setbacks

Front Yard: n/a
 Rear Yard: n/a
 Side Yards: n/a

Parking & Loading Calculation

a. Surface Parking: n/a (use of existing surface parking)

b. Universal Parking: 2 (see A0.04 for location)

c. Drop off Location: (see A0.04)

d. Loading: 1 designated space at north east corner of building. (see A0.04)

e. Bicycle Parking - 4 per 100sqm of gross floor area
 Required: 112
 Provided: 112 (see A0.04 & Landscape for location)

Floor Space Ratio

Permitted: n/a

Proposed: 24.37% (Community Centre)
 4.37% (Child Care Centre)

Total: 28.74%

Washroom Calculation

Female
 WC Req'd: 4
 WC Provided: 10
 WB Req'd: 2
 WB Provided: 4
 Showers Req'd: 4
 Showers Provided: 4

Male
 WC Req'd: 4
 WC Provided: 2 + 4 Urinals
 WB Req'd: 2
 WB Provided: 4
 Showers Req'd: 4
 Showers Provided: 4

*In addition 2 Universal Toilet room are provided

Lockers Calculation

Req'd: 56
 Provided: 44

NET FLOOR AREA				
Level	Occupancy	Number	Name	Area
LEVEL 1	Child Care Centre	151	Infant Activity Area	62.0 m ²
LEVEL 1	Child Care Centre	150	Infant Nap RM 1	11.9 m ²
LEVEL 1	Child Care Centre	152	Infant Nap RM 2	12.5 m ²
LEVEL 1	Child Care Centre	166	Janitor	4.6 m ²
LEVEL 1	Child Care Centre	154	Laundry	3.8 m ²
LEVEL 1	Child Care Centre	155	Parent Room	4.5 m ²
LEVEL 1	Child Care Centre	165	Parent Room	5.9 m ²
LEVEL 1	Child Care Centre	170	Pre-School Activity Area	99.0 m ²
LEVEL 1	Child Care Centre	171	Pre-School Gross Motor Room/Nap	27.7 m ²
LEVEL 1	Child Care Centre	168	Pre-School Quiet	19.8 m ²
LEVEL 1	Child Care Centre	164	Pre-School Storage	6.3 m ²
LEVEL 1	Child Care Centre	163	Pre-School WC	14.3 m ²
LEVEL 1	Child Care Centre	173	Preschool Cubby Area	15.6 m ²
LEVEL 1	Child Care Centre	167	Preschool Kitchen	8.6 m ²
LEVEL 1	Child Care Centre	174	Reception	13.5 m ²
LEVEL 1	Child Care Centre	156	Shared Kitchen	14.0 m ²
LEVEL 1	Child Care Centre	153	Shared Storage	14.7 m ²
LEVEL 1	Child Care Centre	157	Shared WC	14.3 m ²
LEVEL 1	Child Care Centre	161	Staff Room	15.7 m ²
LEVEL 1	Child Care Centre	162	Staff WC	7.2 m ²
LEVEL 1	Child Care Centre	169	Stroller Storage	14.7 m ²
LEVEL 1	Child Care Centre	159	Toddler Activity Area	83.0 m ²
LEVEL 1	Child Care Centre	158	Toddler/ Infant Cubbies	20.7 m ²
LEVEL 1	Child Care Centre	160	Toddler/ Gross Motor/Nap	27.3 m ²
LEVEL 1	Child Care Centre	24	Child Care Centre	521.8 m ²
LEVEL 2	Child Minding Centre	217	Child Minding Activity	72.4 m ²
LEVEL 2	Child Minding Centre	217b	Storage	11.9 m ²
LEVEL 2	Child Minding Centre	2	Child Minding Centre	74.2 m ²
LEVEL 1	Common Space	110	Cafe	22.7 m ²
LEVEL 1	Common Space	111	Reading	15.8 m ²
LEVEL 1	Common Space	2	Common Space	74.5 m ²
LEVEL 1	Fitness Centre	130	Recycling Ctr	28.4 m ²
LEVEL 1	Fitness Centre	117a	Stage Storage	24.2 m ²
LEVEL 2	Fitness Centre	240	Fitness Centre	199.5 m ²
LEVEL 2	Fitness Centre	230	W/D Closet	3.7 m ²
LEVEL 1	Fitness Centre	4	Fitness Centre	255.9 m ²
LEVEL 1	Gymnasium	117	Gym Activity Area	596.9 m ²
LEVEL 1	Gymnasium	117b	Gym Storage	24.3 m ²
LEVEL 1	Gymnasium	117c	Gym Storage	10.4 m ²
LEVEL 1	Gymnasium	118	Stage	45.8 m ²
LEVEL 1	Gymnasium	4	Gymnasium	677.4 m ²
LEVEL 1	Multi Purpose Space	112a	Arts Storage	4.5 m ²
LEVEL 1	Multi Purpose Space	113a	Kitchen	23.5 m ²
LEVEL 1	Multi Purpose Space	112	Room A - Arts	93.5 m ²
LEVEL 1	Multi Purpose Space	113	Room B - Social	89.6 m ²
LEVEL 2	Multi Purpose Space	211	Dance Studio	95.7 m ²
LEVEL 2	Multi Purpose Space	215	Meeting Rm A	46.9 m ²
LEVEL 2	Multi Purpose Space	216	Meeting Rm B	37.8 m ²
LEVEL 2	Multi Purpose Space	213	Meeting Rm C / Music Rm	24.0 m ²
LEVEL 2	Multi Purpose Space	214	Meeting Rm D / Music Rm	23.8 m ²
LEVEL 2	Multi Purpose Space	212	Multi-Purpose Room C	86.5 m ²
LEVEL 2	Multi Purpose Space	200a	Storage	8.8 m ²
LEVEL 2	Multi Purpose Space	200c	Storage	3.9 m ²
LEVEL 1	Reception & Office	123	Instructor Work Rm	11.4 m ²
LEVEL 1	Reception & Office	124	Manager	11.5 m ²
LEVEL 1	Reception & Office	122	Program Coords Work Rm	41.9 m ²
LEVEL 1	Reception & Office	120	Reception	32.2 m ²
LEVEL 1	Reception & Office	126	Staff Meeting	19.1 m ²
LEVEL 1	Reception & Office	121	Staff Room	16.6 m ²
LEVEL 1	Reception & Office	6	Reception & Office	132.7 m ²
LEVEL 1	Teen Centre	119	Teen Centre	58.5 m ²
LEVEL 1	Teen Centre	119a	Teen Kitchen / Storage	6.2 m ²
LEVEL 1	Teen Centre	119b	Youth Program Coord & Storage	7.1 m ²
LEVEL 1	Teen Centre	3	Teen Centre	71.8 m ²
LEVEL 1	Washroom & Change Rm	115	Female Change Rm	34.9 m ²
LEVEL 1	Washroom & Change Rm	114	H/C WC	3.9 m ²
LEVEL 1	Washroom & Change Rm	116	Male Change Rm	32.8 m ²
LEVEL 2	Washroom & Change Rm	220	Female Change Rm	34.9 m ²
LEVEL 2	Washroom & Change Rm	222	H/C WC	3.9 m ²
LEVEL 2	Washroom & Change Rm	221	Male Change Rm	32.8 m ²
LEVEL 2	Washroom & Change Rm	217c	WC	3.4 m ²
LEVEL 2	Washroom & Change Rm	7	Washroom & Change Rm	146.5 m ²
LEVEL 2	Washroom & Change Rm			2494.1 m ²

Copyright reserved. This design and drawing is the exclusive property of WFW Architecture and Communication Inc. and cannot be used for any purpose without the written consent of the Architect. This drawing is not to be used for construction until issued for that purpose by the Architect. Prior to commencement of the Work the Contractor shall verify all dimensions, datum and levels to identify any errors and omissions; ascertain any discrepancies between this drawing and the full Contract Documents; and, bring these items to the attention of the Architect for clarification.

ISSUES + REVISIONS

NO	DATE	DESCRIPTION
1	26 July 2012	ISSUED FOR DEVELOPMENT PERMIT
2	29 Oct 2012	ISSUED FOR DEVELOPMENT PERMIT
3	6 FEB 2013	ISSUED FOR MINOR DP AMENDMENT



WESBROOK COMMUNITY CENTRE

Walter Franci public architecture
 1684 W 2ND AVE VANCOUVER BC V6J 1H4 TEL 604 688 3252 FAX 604 688 5995 WWW.WFRANCL.COM

215 - 309 W CORDOVA ST VANCOUVER BC V6B 1E5 TEL 604 738 4323 FAX 604 873 4323 WWW.PUBLICDESIGN.CA

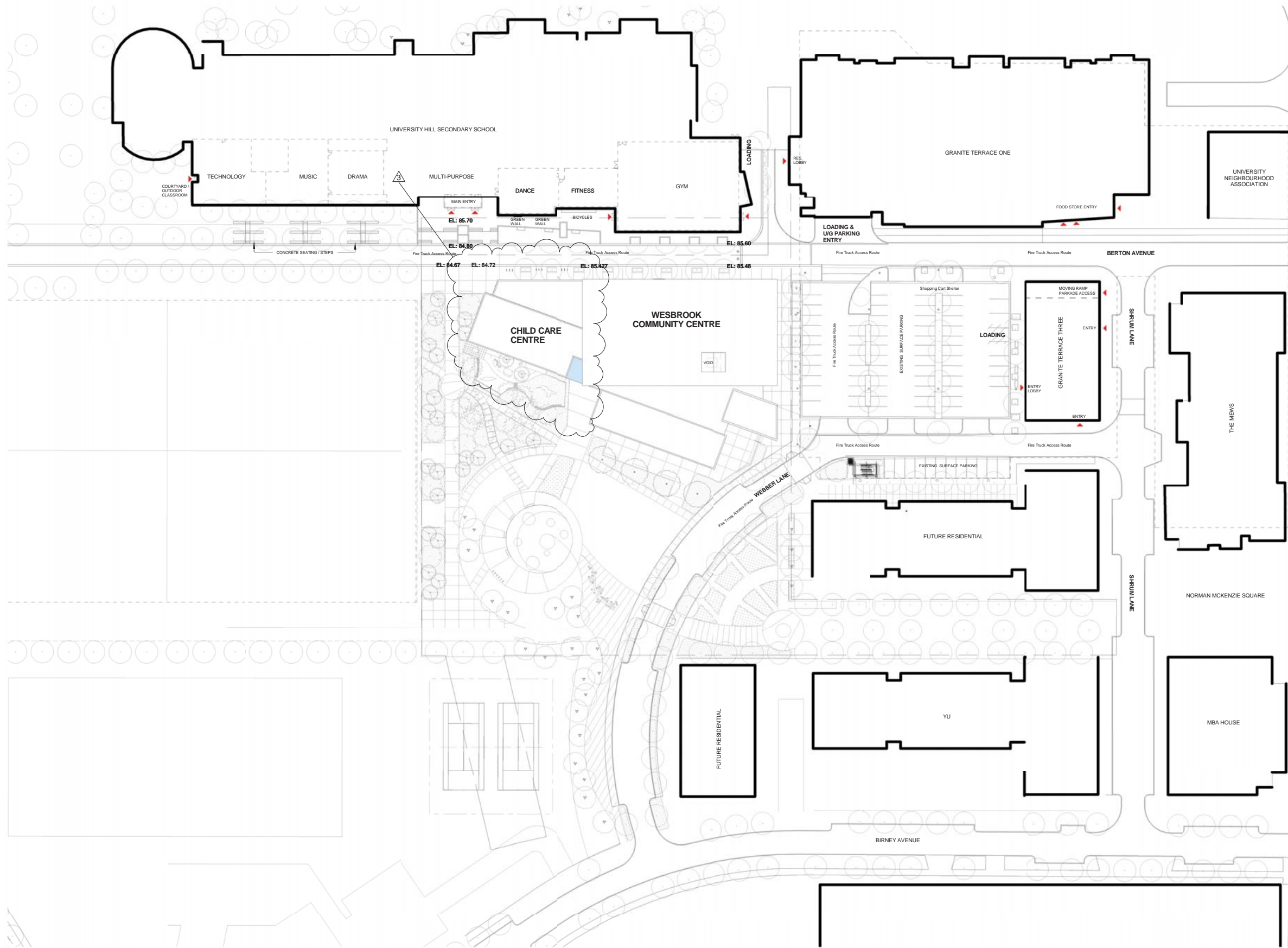
WESBROOK COMMUNITY CENTRE

Street, City, Province
 PROJECT CODE: 21137 STATUS: Project Status
 SCALE: DATE: 04/12/12
 1 : 2000

Cover Sheet / Project Data

SHEET: A0.00 REVISION:

NO	DATE	REVISIONS	DESCRIPTION
1	26 July 2012	ISSUED FOR DEVELOPMENT PERMIT	
2	29 Oct 2012	ISSUED FOR DEVELOPMENT PERMIT	
3	6 FEB 2013	ISSUED FOR MINOR DP AMENDMENT	



1 CONTEXT PLAN



Walter Francl public architecture

1684 W 2ND AVE VANCOUVER BC V6J 1H4
 TEL 604 688 3282
 FAX 604 688 3999
 WWW.FRANCL.COM

215 - 309 W CORDOVA ST VANCOUVER BC V6B 1E5
 TEL 604 738 4323
 FAX 604 678 4313
 WWW.PUBLICDESIGN.CA

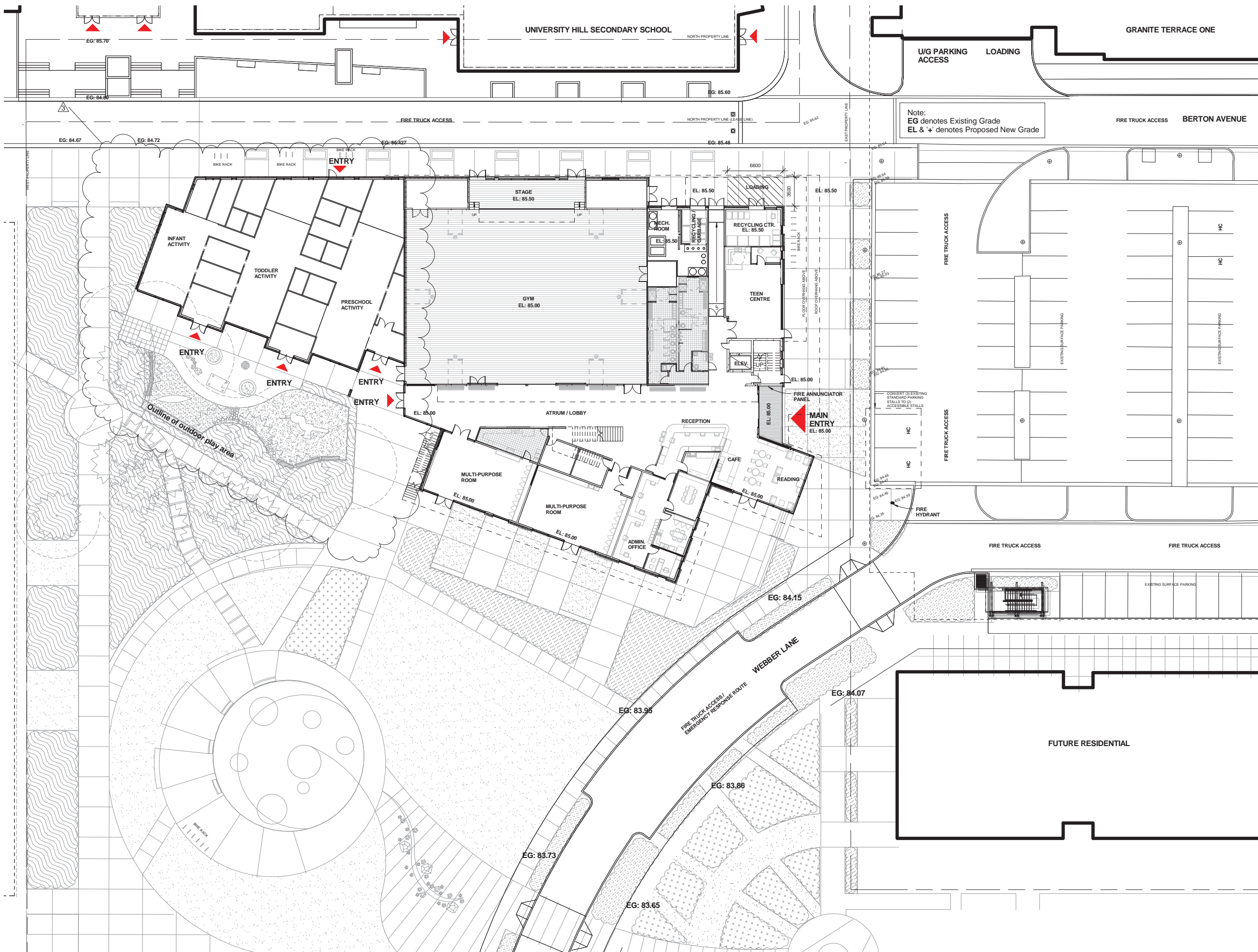
WESBROOK COMMUNITY CENTRE
 ### Street, City, Province

PROJECT CODE: 21137
 STATUS: Project Status

SCALE: 1 : 500
 DATE: 04/12/12

Copyright reserved. This design and drawing is the exclusive property of WFW Architecture and Communication Inc. and cannot be used for any purpose without the written consent of the Architect. This drawing is not to be used for construction until issued for that purpose by the Architect. Prior to commencement of the Work the Contractor shall verify all dimensions, datum and levels to identify any errors and omissions; ascertain any discrepancies between this drawing and the full Contract Documents; and, bring these items to the attention of the Architect for clarification.

ISSUES + REVISIONS		
NO	DATE	DESCRIPTION
1	26 July 2012	ISSUED FOR DEVELOPMENT PERMIT
2	29 Oct 2012	ISSUED FOR DEVELOPMENT PERMIT
3	6 FEB 2013	ISSUED FOR MINOR DP AMENDMENT



Note:
EG denotes Existing Grade
EL & '+' denotes Proposed New Grade

Walter Franci public
architecture

1684 W 2ND AVE VANCOUVER BC V6J 1H4
TEL 604 688 3282 FAX 604 688 9999 WWW.WFRANCL.COM

215 - 309 W CORDOVA ST VANCOUVER BC V6B 1E5
TEL 604 738 4323 FAX 604 678 4313 WWW.PUBLICDESIGN.CA

WESBROOK COMMUNITY CENTRE
Street, City, Province

PROJECT CODE	STATUS
21137	Project Status
SCALE	DATE
1 : 200	04/12/12

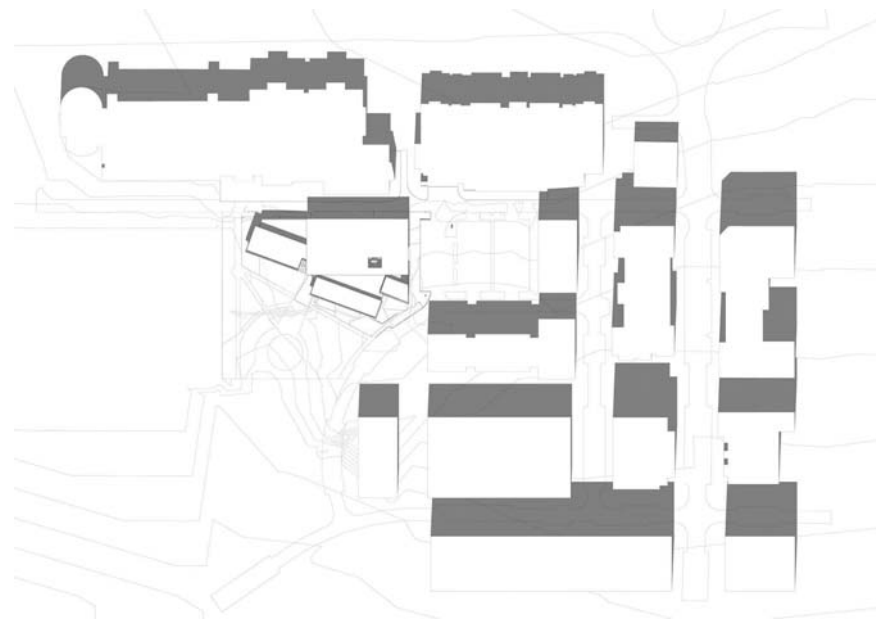
Site Plan
SHEET
A0.04

Copyright reserved. This design and drawing is the exclusive property of WMW Public Architecture and Communication Inc. and cannot be used for any purpose without the written consent of the Architect. This drawing is not to be used for construction until issued for that purpose by the Architect. Prior to commencement of the Work the Contractor shall verify all dimensions, datum and levels to identify any errors and omissions; ascertain any discrepancies between this drawing and the full Contract Documents; and, bring these items to the attention of the Architect for clarification.

ISSUES + REVISIONS		
NO	DATE	DESCRIPTION
1	26 July 2012	ISSUED FOR DEVELOPMENT PERMIT
2	29 Oct 2012	ISSUED FOR DEVELOPMENT PERMIT
3	6 FEB 2013	ISSUED FOR MINOR DP AMENDMENT



Spring 10AM



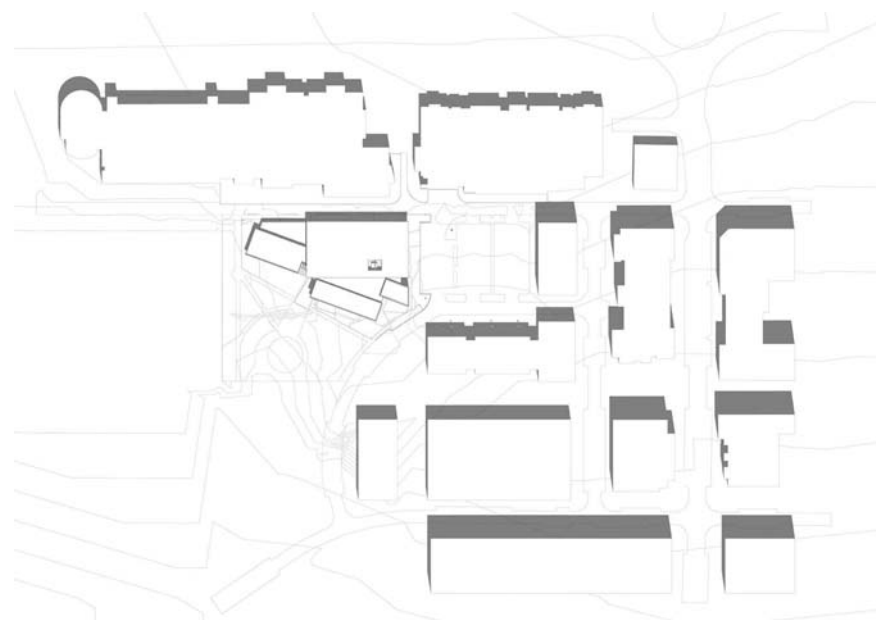
Spring 12PM



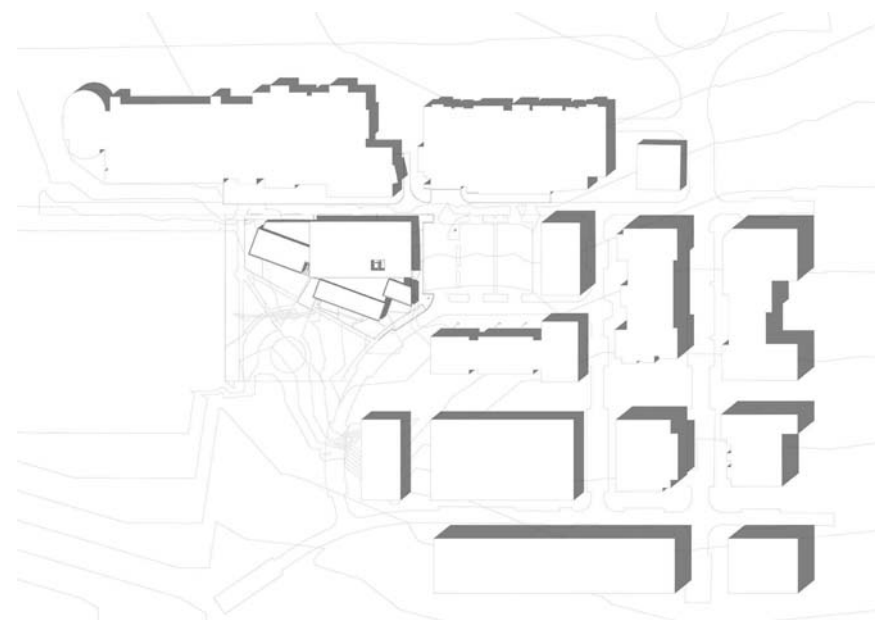
Spring 2PM



Summer 10AM



Summer 12PM



Summer 2PM

Walter Francl public
 architecture
 1884 W 2ND AVE VANCOUVER BC V6J 1H4 TEL 604 688 3282 FAX 604 688 3995 WWW.WFRANCL.COM
 215 - 309 W CORDOVA ST VANCOUVER BC V6B 1E5 TEL 604 738 4323 FAX 604 678 4313 WWW.PUBLICDESIGN.CA

WESBROOK COMMUNITY CENTRE
 ### Street, City, Province

PROJECT CODE	STATUS
21137	Project Status
SCALE	DATE
	04/12/12

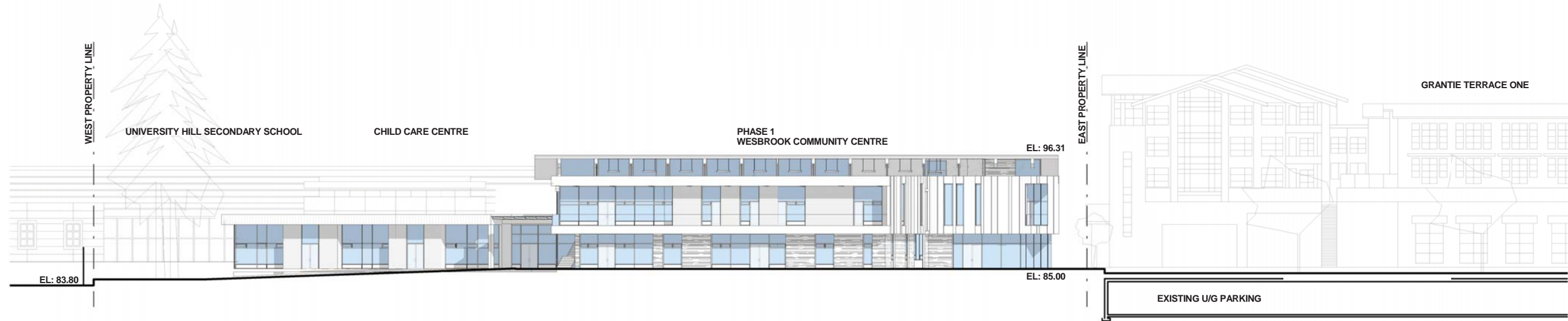
Shadow Study
 Diagrams

A0.05

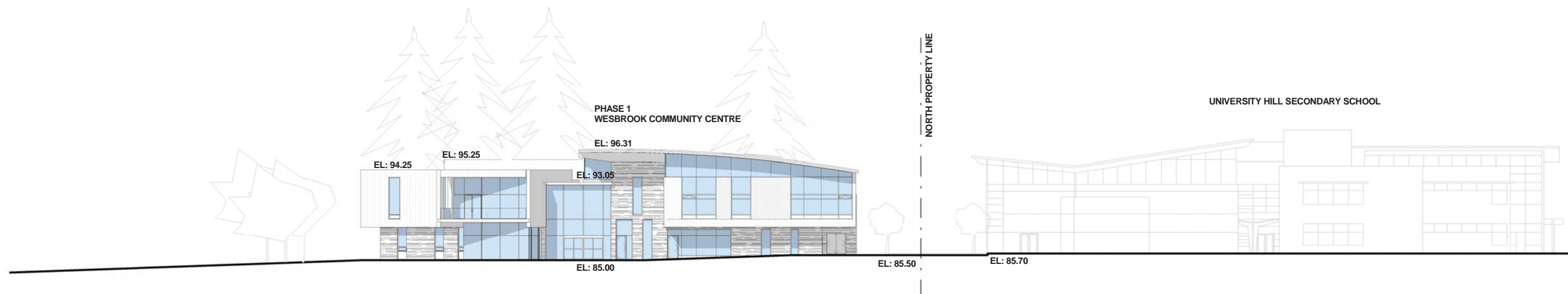


Copyright reserved. This design and drawing is the exclusive property of WMW Architecture and Communication Inc. and cannot be used for any purpose without the written consent of the Architect. This drawing is not to be used for construction until issued for that purpose by the Architect. Prior to commencement of the Work the Contractor shall verify all dimensions, datum and levels to identify any errors and omissions; ascertain any discrepancies between this drawing and the full Contract Documents; and, bring these items to the attention of the Architect for clarification.

ISSUES + REVISIONS		
NO	DATE	DESCRIPTION
1	26 July 2012	ISSUED FOR DEVELOPMENT PERMIT
2	29 Oct 2012	ISSUED FOR DEVELOPMENT PERMIT
3	6 FEB 2013	ISSUED FOR MINOR DP AMENDMENT



1 SITE CONTEXT ELEVATION - SOUTH



2 SITE CONTEXT ELEVATION - EAST

Walter Francl public
 architecture
 1684 W 2ND AVE VANCOUVER BC V6J 1H4 TEL 604 688 3262 FAX 604 688 5995 WWW.WFRANCL.COM
 215 - 309 W CORDOVA ST VANCOUVER BC V6B 1E5 TEL 604 738 4323 FAX 604 678 4313 WWW.PUBLICDESIGN.CA

WESBROOK COMMUNITY CENTRE
 ### Street, City, Province
 PROJECT CODE: 21157 STATUS: Project Status
 SCALE: 1:200 DATE: 04/12/12

Site Context Elevations
 SHEET: A0.06 REVISION:

20120113 10:48 AM C:\Users\pfrancis\Documents\21157 - WCC - CENTRAL.dwg Page 14

ISSUES + REVISIONS		
NO	DATE	DESCRIPTION
1	26 July 2012	ISSUED FOR DEVELOPMENT PERMIT
2	29 Oct 2012	ISSUED FOR DEVELOPMENT PERMIT
3	6 FEB 2013	ISSUED FOR MINOR DP AMENDMENT



VIEW FROM SOUTH



VIEW FROM WEST



VIEW FROM SOUTH WEST

Walter Franci public
 architecture
 1684 W 2ND AVE VANCOUVER BC V6J 1H4 TEL 604 688 3282 FAX 604 688 3969 WWW.WFRANCL.COM
 215 - 309 W CORDOVA ST VANCOUVER BC V6B 1E5 TEL 604 738 4323 FAX 604 678 4313 WWW.PUBLICDESIGN.CA

WESBROOK COMMUNITY CENTRE

Street, City, Province

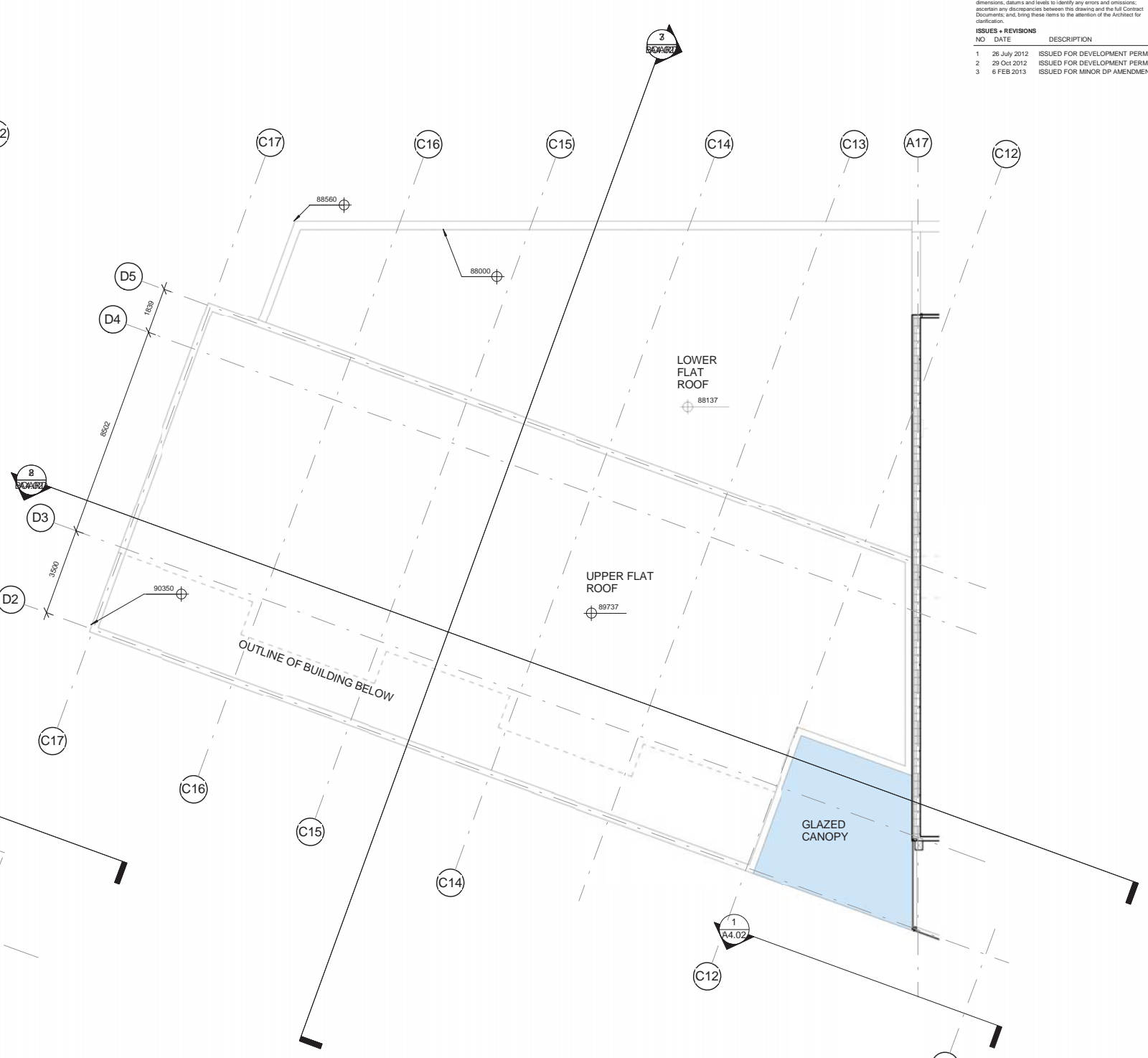
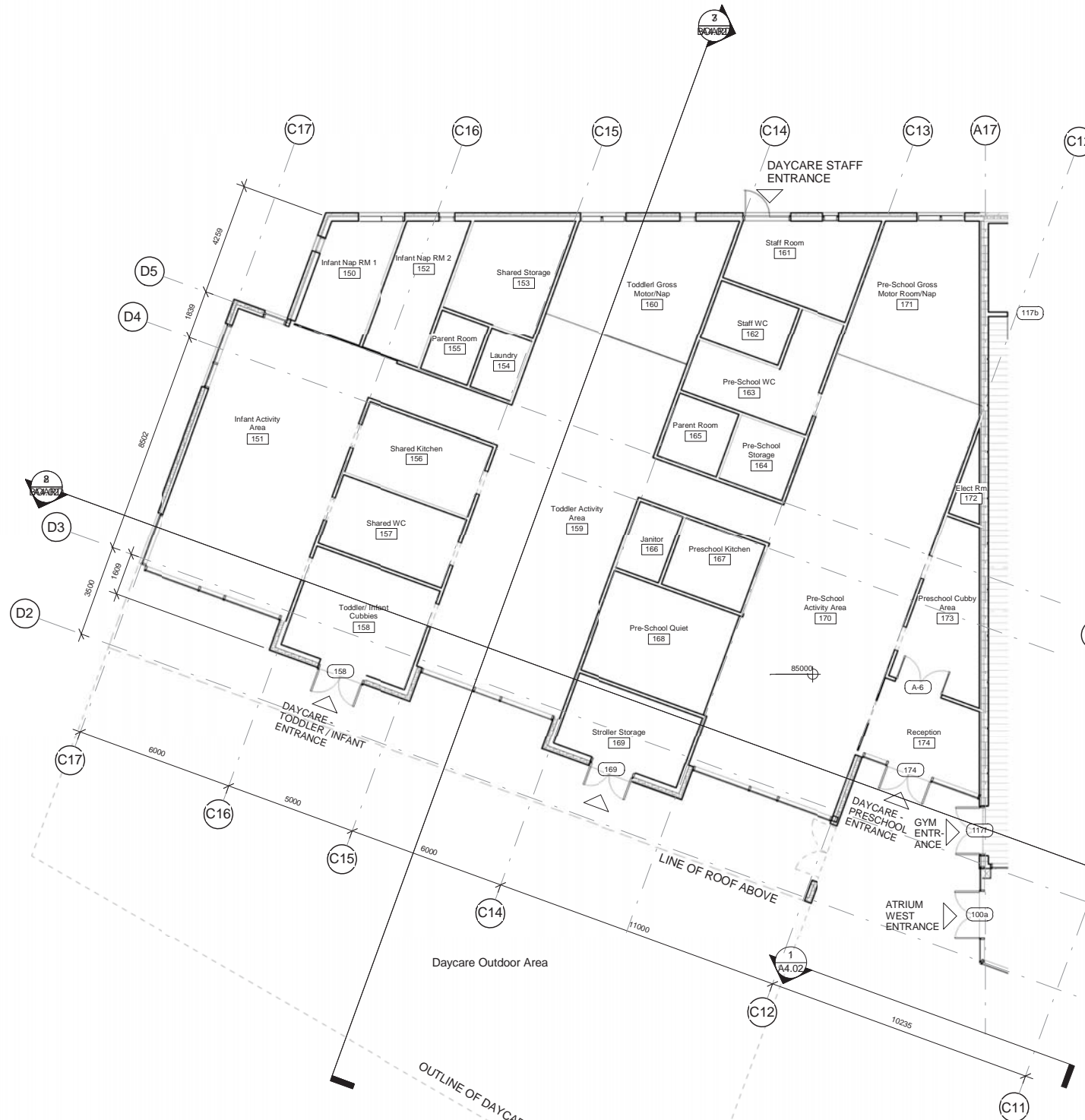
PROJECT CODE	STATUS
21137	Project Status
DATE	DATE
SCALE	04/12/12

Renderings

SHEET
 A0.07

Copyright reserved. This design and drawing is the exclusive property of WFW Public Architecture and Communication Inc. and cannot be used for any purpose without the written consent of the Architect. This drawing is not to be used for construction until issued for that purpose by the Architect. Prior to commencement of the Work the Contractor shall verify all dimensions, datum and levels to identify any errors and omissions; ascertain any discrepancies between this drawing and the full Contract Documents; and, bring these items to the attention of the Architect for clarification.

NO	DATE	REVISIONS	DESCRIPTION
1	26 July 2012	ISSUED FOR DEVELOPMENT PERMIT	
2	29 Oct 2012	ISSUED FOR DEVELOPMENT PERMIT	
3	6 FEB 2013	ISSUED FOR MINOR DP AMENDMENT	



Walter Francl public
architecture

1684 W 2ND AVE VANCOUVER BC V6J 1H4
TEL 604 688 3282 FAX 604 688 3999 WWW.WFRANCL.COM

215 - 309 W CORDOVA ST VANCOUVER BC V6B 1E5
TEL 604 738 4323 FAX 604 678 4313 WWW.PUBLICDESIGN.CA

WESBROOK COMMUNITY CENTRE
Street, City, Province

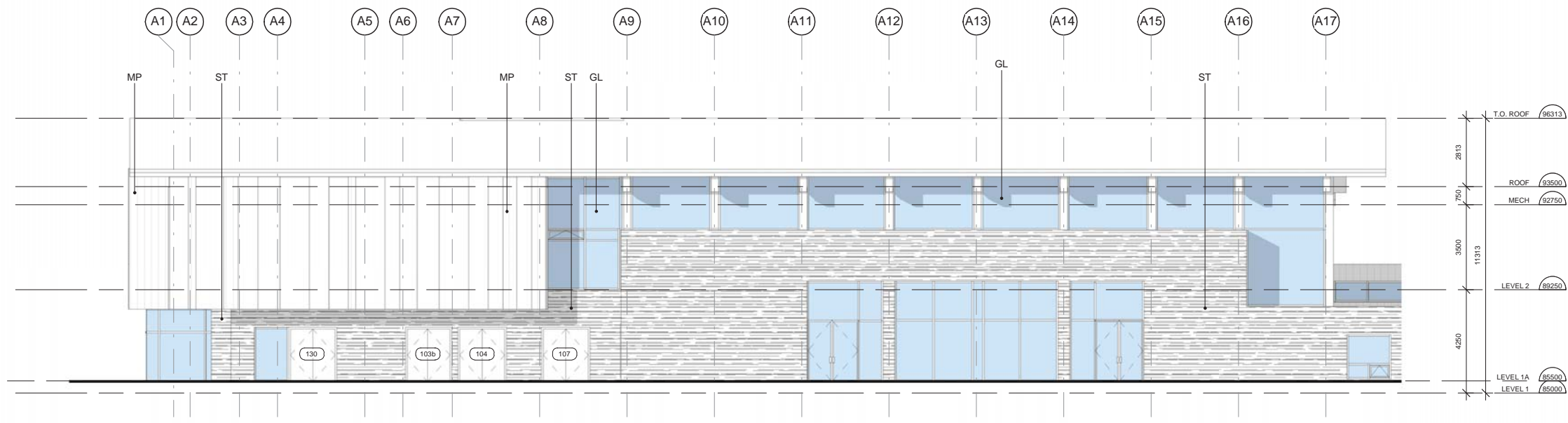
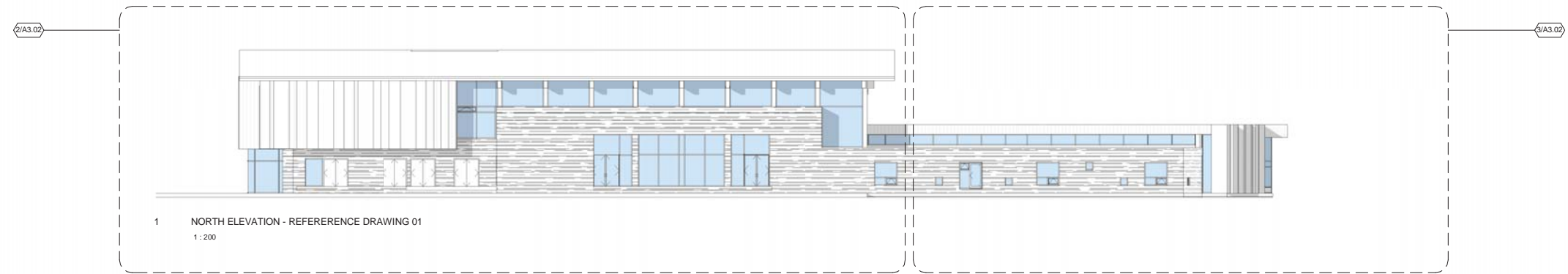
PROJECT CODE	STATUS
21137	Project Status
SCALE	DATE
1:100	04/12/12

Daycare Plan
SHEET
A1.04

2012.03.28 PM C:\Users\pdownes\Documents\21137 - WCC - CENTRAL.dwg

Copyright reserved. This design and drawing is the exclusive property of WMW Public Architecture and Communication Inc. and cannot be used for any purpose without the written consent of the Architect. This drawing is not to be used for construction until issued for that purpose by the Architect. Prior to commencement of the Work the Contractor shall verify all dimensions, datum and levels to identify any errors and omissions; ascertain any discrepancies between this drawing and the full Contract Documents; and, bring these items to the attention of the Architect for clarification.

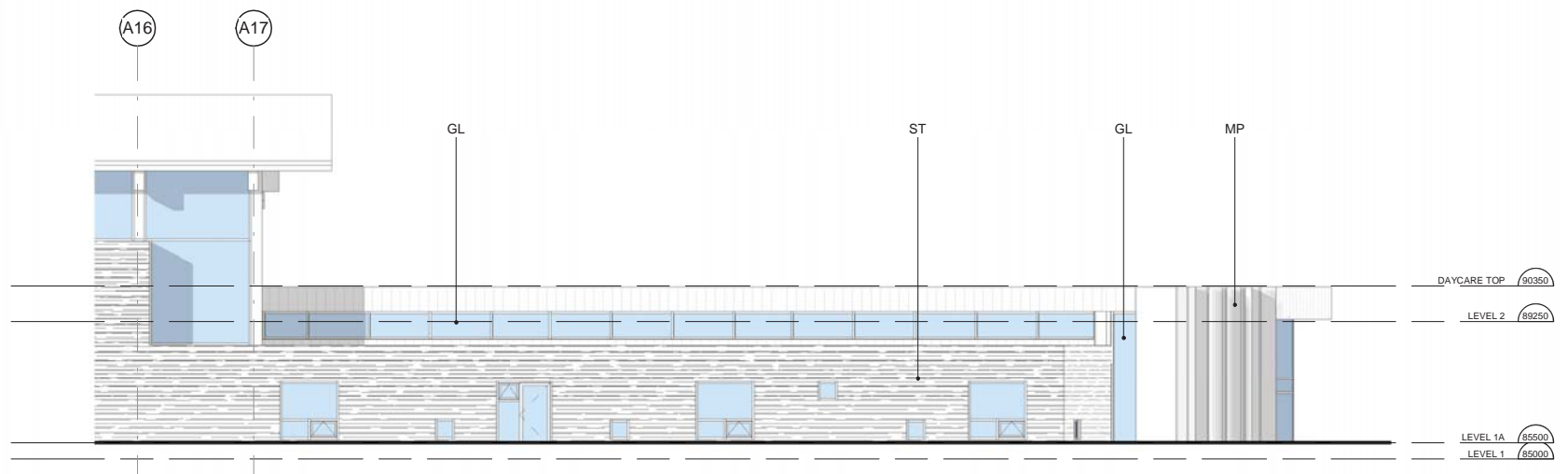
ISSUES + REVISIONS		
NO	DATE	DESCRIPTION
1	26 July 2012	ISSUED FOR DEVELOPMENT PERMIT
2	29 Oct 2012	ISSUED FOR DEVELOPMENT PERMIT
3	6 FEB 2013	ISSUED FOR MINOR DP AMENDMENT



EXTERIOR MATERIALS LEGEND

	ST STONE CLADDING (LASHIN BASALT ASHLAR)
	MP COMPOSITE METAL PANEL (TITANIUM METALIC COOL, COPPER METALIC COOL, CHAMPAGNE COOL)
	WD WOOD CLADDING (STAINED, COLOR & SPECIE TRC)
	GL LOW-E (CLEAR)
	SP SPANDREL PANEL

2 NORTH ELEVATION - COMMUNITY CENTRE
1:100



3 NORTH ELEVATION - DAYCARE
1:100

Walter Franci public
architecture

1684 W 2ND AVE VANCOUVER BC V6J 1H4
TEL 604 688 3262 FAX 604 688 9999 WWW.WFRANCL.COM

215 - 309 W CORDOVA ST VANCOUVER BC V6B 1E5
TEL 604 738 4323 FAX 604 678 4313 WWW.PUBLICDESIGN.CA

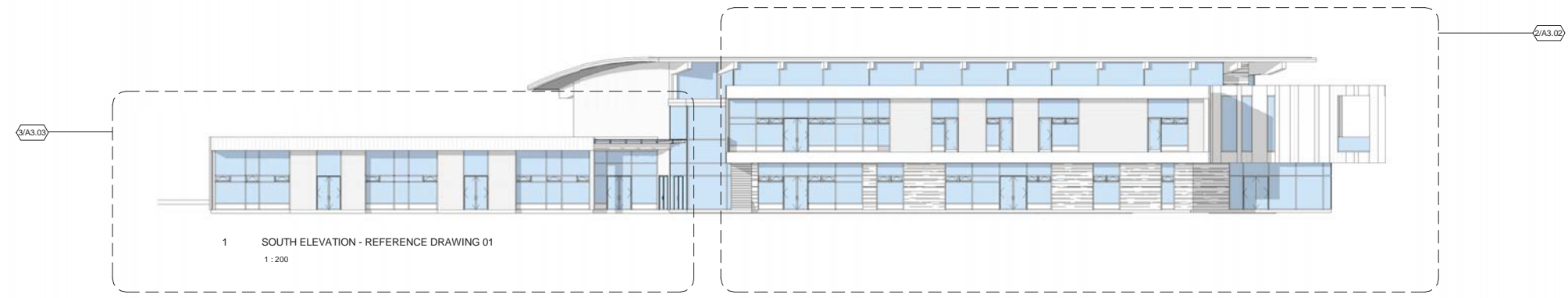
WESBROOK COMMUNITY CENTRE

Street, City, Province




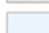

PROJECT CODE	STATUS
21157	Project Status
SCALE	DATE
As indicated	04/12/12

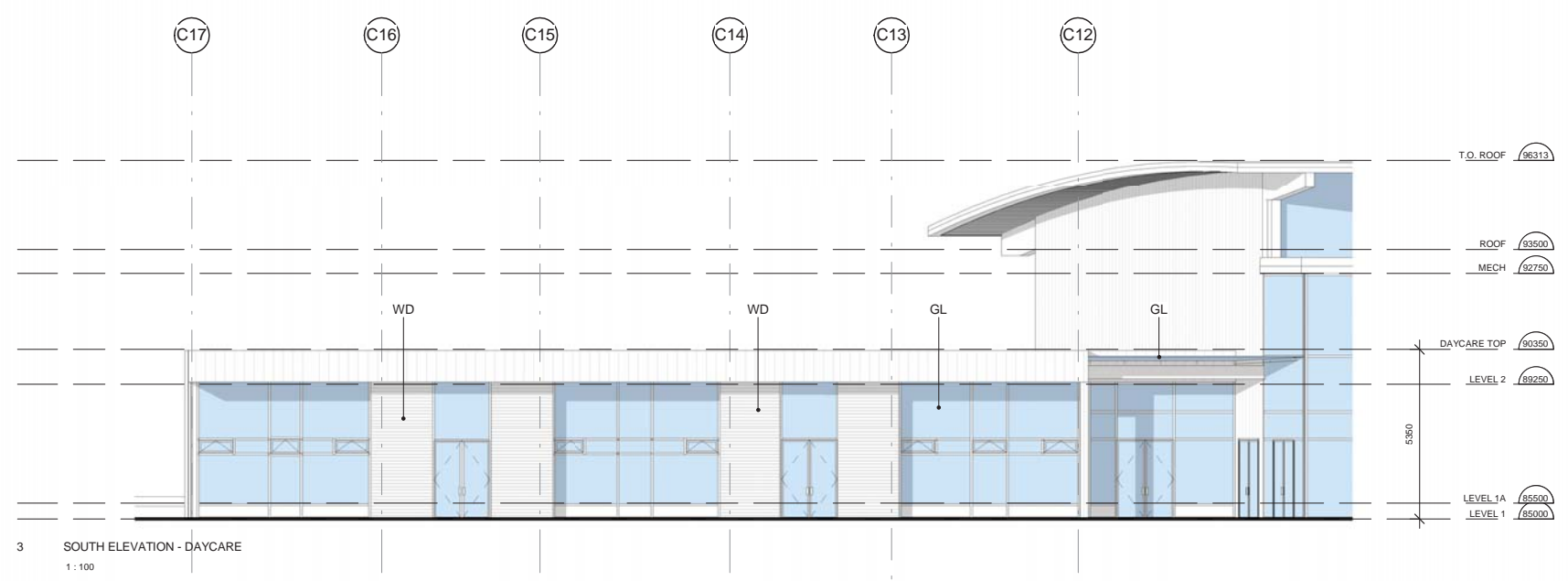
Copyright reserved. This design and drawing is the exclusive property of WMW Architecture and Communication Inc. and cannot be used for any purpose without the written consent of the Architect. This drawing is not to be used for construction until issued for that purpose by the Architect. Prior to commencement of the Work the Contractor shall verify all dimensions, datum and levels to identify any errors and omissions; ascertain any discrepancies between this drawing and the full Contract Documents; and, bring these items to the attention of the Architect for clarification.

ISSUES + REVISIONS		
NO	DATE	DESCRIPTION
1	26 July 2012	ISSUED FOR DEVELOPMENT PERMIT
2	29 Oct 2012	ISSUED FOR DEVELOPMENT PERMIT
3	6 FEB 2013	ISSUED FOR MINOR DP AMENDMENT



EXTERIOR MATERIALS LEGEND

-  **ST** STONE CLADDING
(LAKSHI BASKET ASHLAR)
-  **MP** COMPOSITE METAL PANEL
(TITANIUM METALIC COOL, COPPER METALIC COOL, CHAMPAGNE COOL)
-  **WD** WOOD CLADDING
(STAINED, COLOR & SPECIE TBD)
-  **GL** LOW-E
(CLEAR)
-  **SP** SPANDELR PANEL



Walter Franci public
architecture

1884 W 2ND AVE VANCOUVER BC V6J 1H4
TEL 604 688 3282 FAX 604 688 9999 WWW.WFRANCI.COM

215 - 309 W CORDOVA ST VANCOUVER BC V6B 1E5
TEL 604 738 4323 FAX 604 678 4313 WWW.PUBLICDESIGN.CA

WESBROOK COMMUNITY CENTRE

Street, City, Province

PROJECT CODE	STATUS
21157	Project Status
SCALE	DATE
As indicated	04/12/12

201201131748.Plot