

**MATERIALS AND FINISHES**

- PAVING**
- (A) TYPE A**  
(PAVING TO BE TYPE A UNLESS OTHERWISE NOTED)  
NATURAL GREY CONCRETE  
SAW-CUT JOINTS  
LT-MED SANDBLAST FINISH
- (B) TYPE B**  
NATURAL GREY CONCRETE  
MEDIUM EXPOSED AGG. FINISH  
GRANITE AGGREGATE  
SAW-CUT JOINTS
- SITE FURNISHINGS**
- SEAT WALL**  
NATURAL GREY CONCRETE  
ELECTRICAL PLUG-INS
- BASALT BENCHES**  
LOCAL BASALT
- BOULDERS**  
LOCAL GRANITE
- LIGHTING FIXTURES**
- IN\* INVUE ICON (SMALL), COLOUR UBC GREY
- RE REBELLE MINI ELLIPTICAL, 2809B MODEL
- BIKE PARKING**  
UBC STANDARD INVERTED U  
BY URBANRACKS 1-888-717-8881, GALVANIZED FINISH  
SURFACE MOUNTED  
SPACING AT 750 MM O.C. UNO  
INSTALL PER MFR RECOMMENDATIONS
- BOLLARDS**  
UBC STANDARD  
COLOUR UBC GREY
- LIMIT OF WORK**
- +84.20 SPOT ELEVATIONS

Karen Kiest  
Landscape Architects  
111 west john street suite 305  
seattle washington 98119  
206 323 6032  
www.kk-la.com

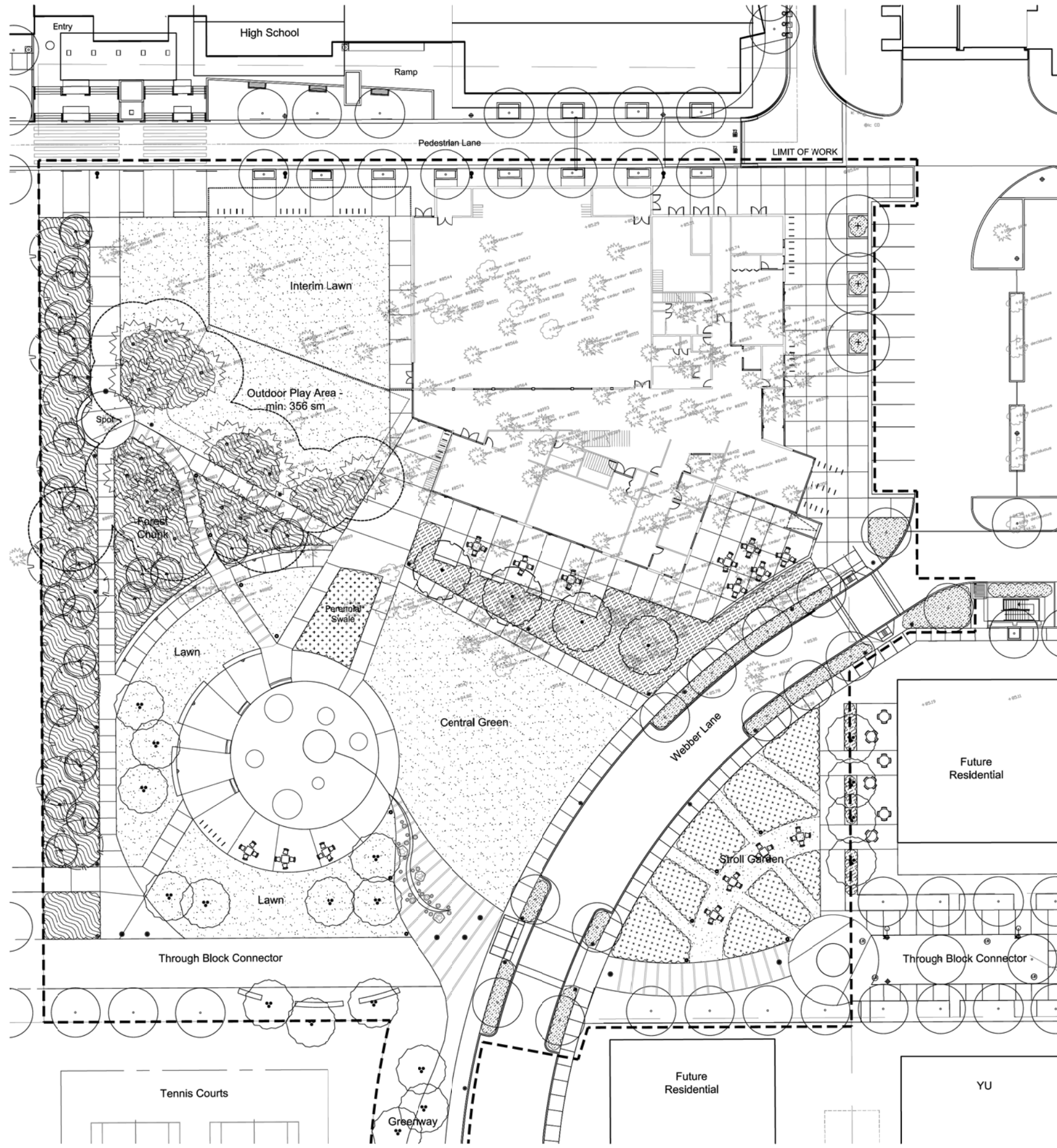
**Walter Francl public**  
architecture  
1884 W 2ND AVE VANCOUVER BC V6J 1H4  
TEL: 604 688 3522 FAX: 604 688 5995  
WWW.WALTERFRANCL.COM

215 - 308 W CORDOVA ST VANCOUVER BC V6B 1E5  
TEL: 604 726 0275 FAX: 604 673 4313  
WWW.PUBLICDESIGNCA

**WESBROOK COMMUNITY CENTRE**

PROJECT CODE 21137	STATUS Project Status
SCALE	DATE 07/26/12

**LANDSCAPE PLAN**  
SHEET  
L1.00



**PLANT LEGEND**

- EXISTING TREE TO REMOVE; WITHIN BUILDING AND SITE BOUNDARY
- TREE TO BE PROTECTED WITH 6MØ TREE PROTECTION FENCING

**PLANT LIST**

SYMBOL	BOTANICAL NAME	COMMON NAME	SIZE	SPACING	QTY.
<b>FOREST CHUNK - EXISTING TREES</b>					
	PSEUDOTSUGA MENZIESII	DOUGLAS FIR	SHOWN ON PLAN	SHOWN ON PLAN	
	THUJA PLICATA	WESTERN RED CEDAR	SHOWN ON PLAN	SHOWN ON PLAN	
<b>FOREST EDGE</b>					
	ACER CIRCINATUM	VINE MAPLE	3M MIN. HT., MULTI	PER PLAN	22
	BETULA PAPIRYFERA	PAPER BIRCH	80 mm CAL, MULTI	PER PLAN	19
	PSEUDOTSUGA MENZIESII	DOUGLAS FIR	3M MIN. HT.	PER PLAN	6
	THUJA PLICATA	WESTERN RED CEDAR	3M MIN. HT.	PER PLAN	7
<b>STREET EDGE TREE</b>					
	LIQUIDAMBAR STYRACIFLUA	SWEETGUM	80 mm CAL	PER PLAN	3
<b>ORNAMENTAL TREE</b>					
	PRUNUS YEDOENSIS 'AKEBONO'	YOSHINO CHERRY	80 mm CAL	PER PLAN	4
<b>WESBROOK NEIGHBORHOOD TREES</b>					
	PYRUS 'CHANTICLEER' (SCHOOL)	CHANTICLEER PEAR	80 mm CAL	PER PLAN	SEE PERRY
	STYRAX JAPONICUS (THROUGH BLOCK CONNECTOR)	JAPANESE SNOWBALL	80 mm CAL	PER PLAN	SEE PERRY
<b>STORMWATER SWALE / PERENNIAL BED</b>					
	20% IRIS ENSATA	IRIS	#1	450 mm O.C.	35
	60% LIRIOPE SPICATA	LIRIOPE	#1	450 mm O.C.	206
	20% SALVIA X SYLVESTRIS 'WESUWE'	MEADOW SAGE	#1	450 mm O.C.	68
	20% ACONITUM CARM. ARENSII	MONKSHOOD	#1	450 mm O.C.	35
<b>STROLL GARDEN</b>					
	60% PAEONIA SP.	PEONY (TREE & SHRUB)	#5	450 mm O.C.	816
	40% GAULTHERIA PROCUMBENS	WINTERGREEN	#1	450 mm O.C.	544
<b>STREET PLANTINGS</b>					
	EPIEDIUM	BISHOPS HAT	#1	300 mm O.C.	1 200
	POLYSTICHUM MUNITUM	SWORD FERN	#1	300 mm O.C.	1 200
<b>SHRUBS</b>					
	LONICERA PILEATA	LONICERA	#1	600 mm O.C.	186
	FOTHERGILLA	FOTHERGILLA	#5	600 mm O.C.	186
	RHODODENDRON 'HINO CRIMSON'	'HINO CRIMSON' RHODODENDRON	#5	600 mm O.C.	186
	SPIRAEA J. 'ANTHONY WATERER'	SPIRAEA	#1	600 mm O.C.	186
<b>NATIVE MIX</b>					
	50% GAULTHERIA SHALLON	SALAL	#1	300 O.C.	5 472
	25% MAHONIA NERVOSA	OREGON GRAPE	#1	300 O.C.	2 736
	25% POLYSTICHUM MUNITUM	SWORD FERN	#1	300 O.C.	2 736
<b>SODDED LAWN</b>					

**GENERAL PLANTING NOTES**

1. ALL LANDSCAPE AND PLANT MATERIAL SHALL BE TO BCSLA/UBC STANDARDS.
2. FINAL LOCATIONS OF ALL PLANT MATERIAL SHOULD BE APPROVED BY LANDSCAPE ARCHITECT ON SITE.
3. CONTINUOUS MULCH LAYER SHALL BE INSTALLED FOR 100% OF PROPOSED PLANTING AREAS.
4. ALL NEW OR RESTORED LAWN AREAS SHALL BE SOD LAWN.
5. PROVIDE AN IN-GROUND AUTOMATIC IRRIGATION SYSTEM FOR PLANT ESTABLISHMENT AND LAWN IRRIGATION.
6. APPROXIMATELY 128 TREES TO BE REMOVED (AS SHOWN), TREE REPLACEMENT POLICY PER UBC STANDARD.

Karen Kiest  
Landscape Architects  
111 west john street suite 305  
seattle washington 98119  
206 323 6032  
www.kk-la.com

**Walter Francl public**  
architecture

1884 W 2ND AVE VANCOUVER BC V6J 1H4 TEL: 604 688 1832 FAX: 604 688 5995 WWW.WFRANCL.COM

215 - 308 W CORDOVA ST VANCOUVER BC V6B 1E5 TEL: 604 726 0275 FAX: 604 673 4313 WWW.PUBLICDESIGNBCA

**WESBROOK COMMUNITY CENTRE**

PROJECT CODE: 21137  
STATUS: Project Status  
SCALE: DATE: 07/26/12

**PLANTING PLAN**  
SHEET L2.00



**MATERIALS**

**① PAVEMENTS**



- Light Sandblast Finish
- Saw-cut Joints

**③ LIGHTING**



- Invue Icon (small)

**② SEATING**

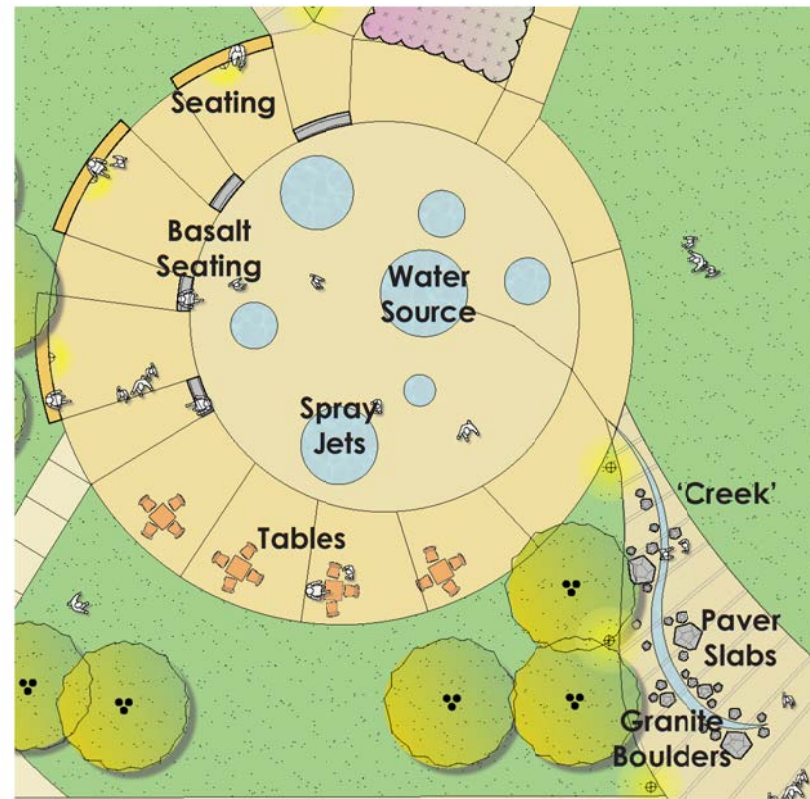


- Seat walls, concrete with wood/composite top

**④ BIKE PARKING**



- Inverted U, Galvanized



**WATER PARK**



View of Community Centre from South



Close Up of Water Park



Copyright reserved. This design and drawing is the exclusive property of W&F Public Architecture and Communication Inc. and cannot be used for any purpose without the written consent of the Architect. This drawing is not to be used for construction until issued for that purpose by the Architect. Prior to commencement of the work the Contractor shall verify all dimensions, details and levels to identify any errors and omissions; ascertain any discrepancies between this drawing and the A/C Contract Documents; and, bring these items to the attention of the Architect for clarification.

ISSUES + REVISIONS

NO.	DATE	DESCRIPTION

Karen Kiest  
Landscape Architects  
111 west john street suite 305  
seattle washington 98119  
206 323 6032  
www.kk-la.com

Walter Francl  
architecture public

1884 W 2ND AVE  
VANCOUVER BC V6B 1S4  
TEL: 604 688 1052  
FAX: 604 688 1055  
WWW.WFRANCL.COM

215 - 309 W CORDOVA ST  
VANCOUVER BC V6B 1E5  
TEL: 604 791 4523  
FAX: 604 674 4333  
WWW.PUBLICDESIGN.CA

PROJECT CODE: 21137  
SCALE:                      STATUS: Project Status  
DATE:                        DATE  
07/26/12

LANDSCAPE  
IMAGE BOARD  
SHEET  
L3.00