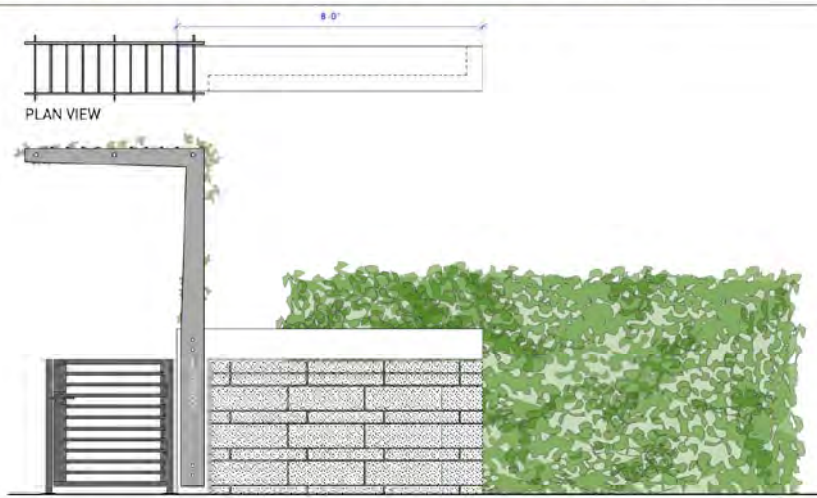
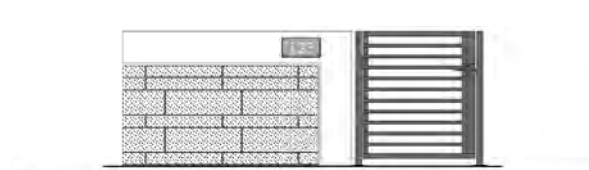
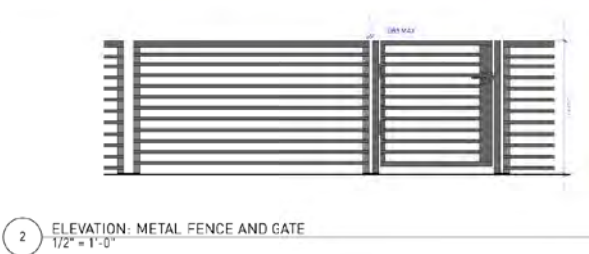


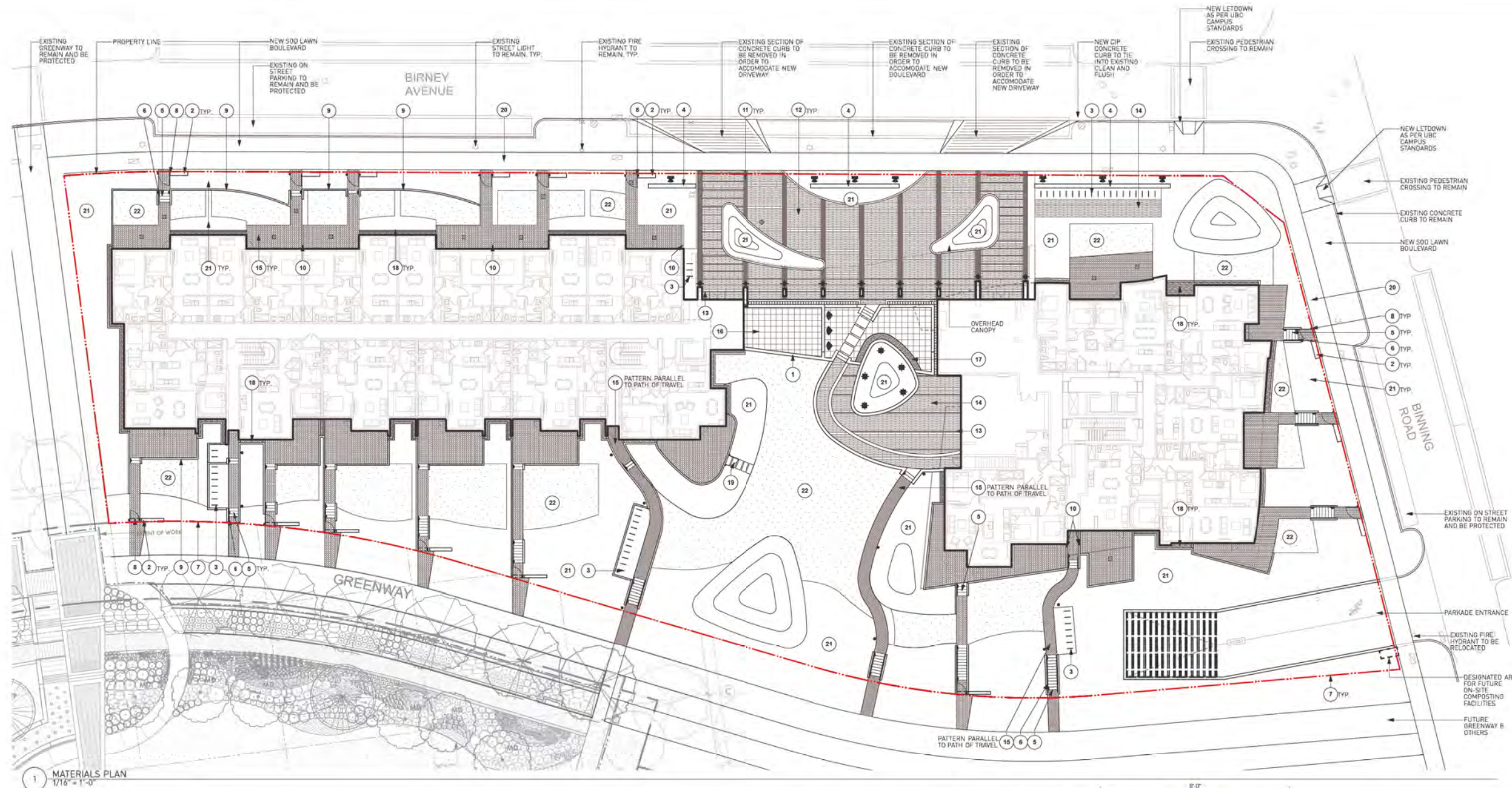


1 MATERIALS PLAN  
1/16" = 1'-0"

MATERIALS LEGEND		LIGHTING LEGEND	
KEY	DESCRIPTION	KEY	DESCRIPTION
1	STONE FACED WATER FEATURE WITH INFILTRY EDGE ON NORTH AND EAST SIDE	12	'BROADWAY' CONCRETE UNIT PAVES BY BARKMAN (12' X 18") COLOUR: SIERRA GRAY
2	STONE FACED ENTRY PIER	13	'BROADWAY' CONCRETE UNIT PAVES BY BARKMAN (12' X 18") COLOUR: CHARCOAL
3	UBC CAMPUS STANDARD BIKE RACK ON CIP CONCRETE PAD (48 RACKS TOTAL = 96 BIKE PARKING SPACES)	14	'BROADWAY' CONCRETE UNIT PAVES BY BARKMAN (12' X 12") COLOUR: SIERRA GRAY
4	STONE FACED FEATURE WALL	15	'STANDARD' CONCRETE UNIT PAVES BY ABBOTSFORD CONCRETE COLOUR: NATURAL
5	CIP CONCRETE STAIRS	16	'TEXADA' HYDRAPRESSED SLABS BY ABBOTSFORD CONCRETE COLOUR: CHARCOAL
6	CUSTOM METAL HANDRAIL	17	RIVER ROCK
7	CUSTOM METAL FENCE ALONG SOUTH PROPERTY LINE	18	RIVER ROCK DRAIN STRIP
8	CUSTOM METAL GATE	19	CONCRETE SLABS SET IN CRUSHED GRANULAR
9	ALLAN BLOCK WALL	20	CIP CONCRETE SIDEWALK AS PER UBC CAMPUS STANDARDS
10	PRIVACY SCREEN	21	PLANT BED
11	'BROADWAY' CONCRETE UNIT PAVES BY BARKMAN (12' X 24") COLOUR: CHARCOAL	22	SOD LAWN

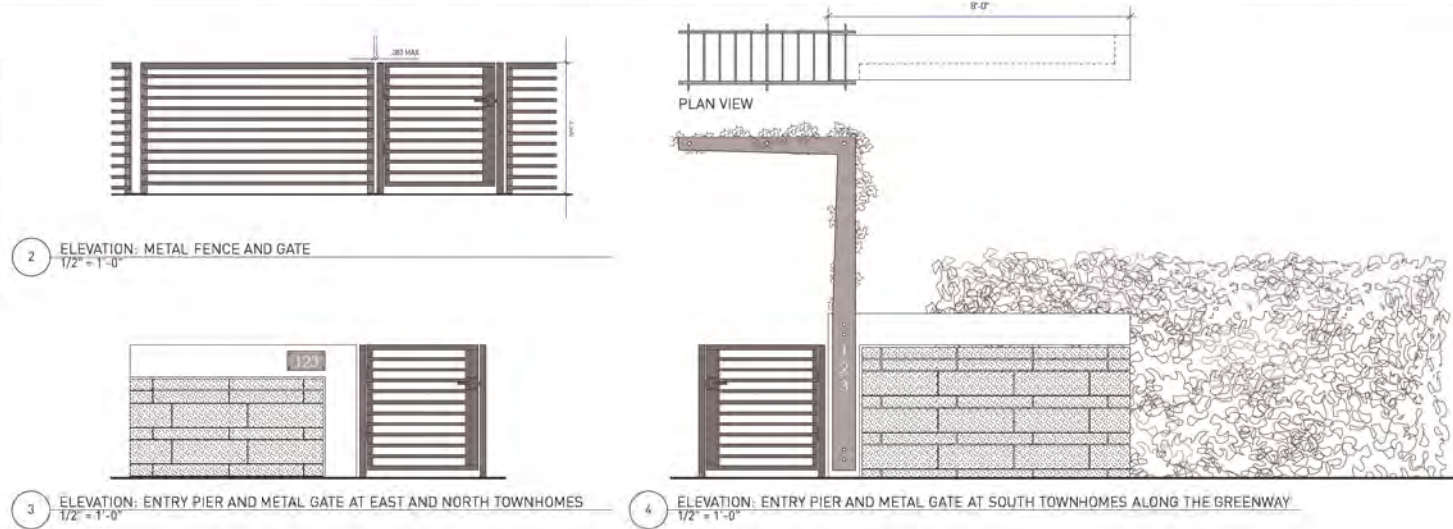
LIGHTING LEGEND	
KEY	DESCRIPTION
▲	STEP LIGHT
●	ILLUMINATED ROLLARD AS PER UBC CAMPUS STANDARD
◆	IN GROUND UP LIGHTS
◆	SUBMERSIBLE UP LIGHTS
◆	TREE UP LIGHTS
◆	FEATURE WALL UP LIGHTS



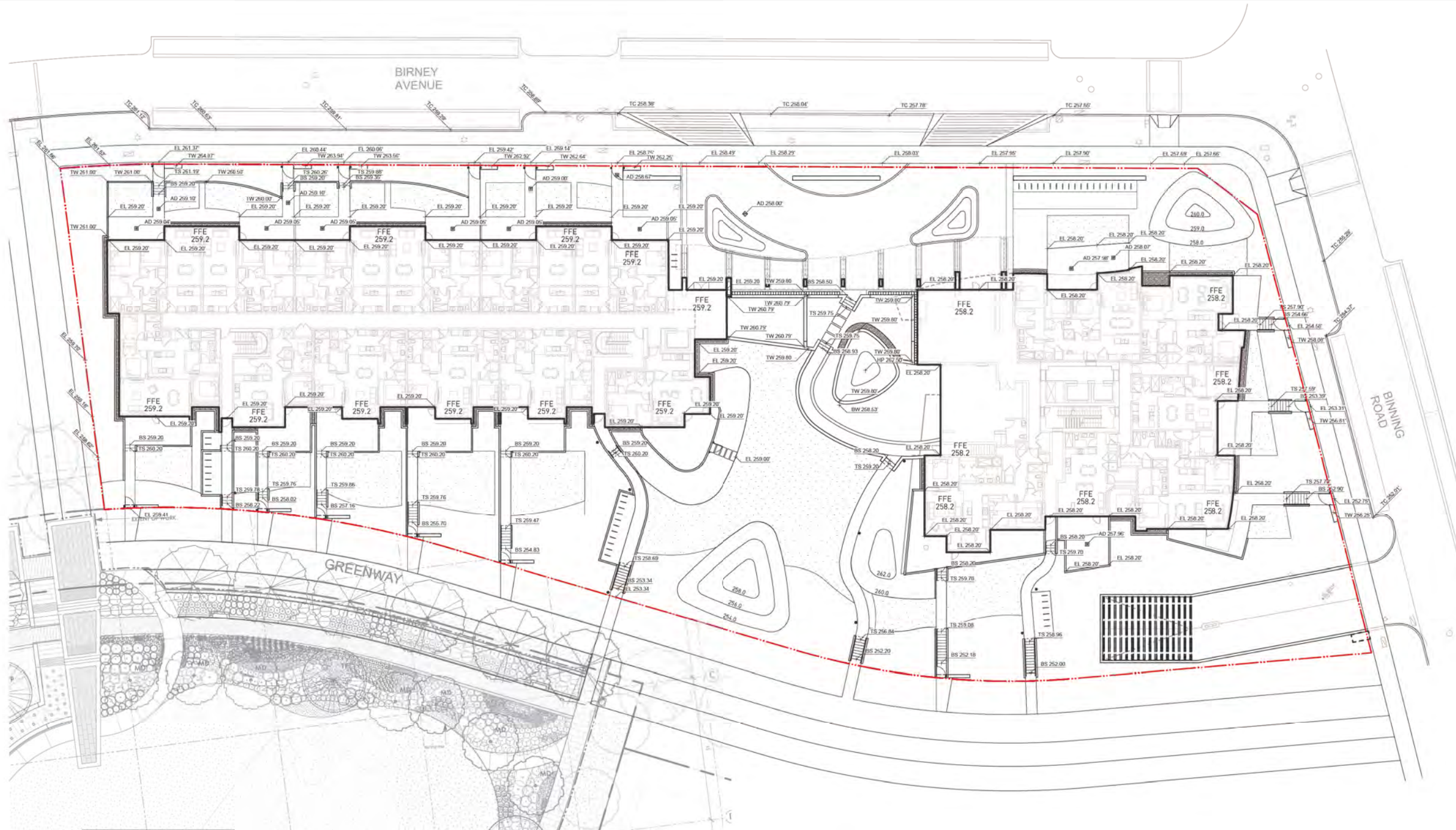


MATERIALS LEGEND		KEY DESCRIPTION	
KEY	DESCRIPTION	KEY	DESCRIPTION
1	STONE-FACED WATER FEATURE WITH INFINITY EDGE ON NORTH AND EAST SIDE	12	BROADWAY CONCRETE UNIT PAVES BY BARKHAM (8\"/>

LIGHTING LEGEND	
KEY	DESCRIPTION
[Symbol]	STEP LIGHT
[Symbol]	ILLUMINATED BOLLARD AS PER UBC CAMPUS STANDARDS
[Symbol]	IN GROUND UP LIGHTS
[Symbol]	SUBMERSIBLE UP LIGHTS
[Symbol]	TREE UP LIGHTS
[Symbol]	FEATURE WALL UPLIGHTS

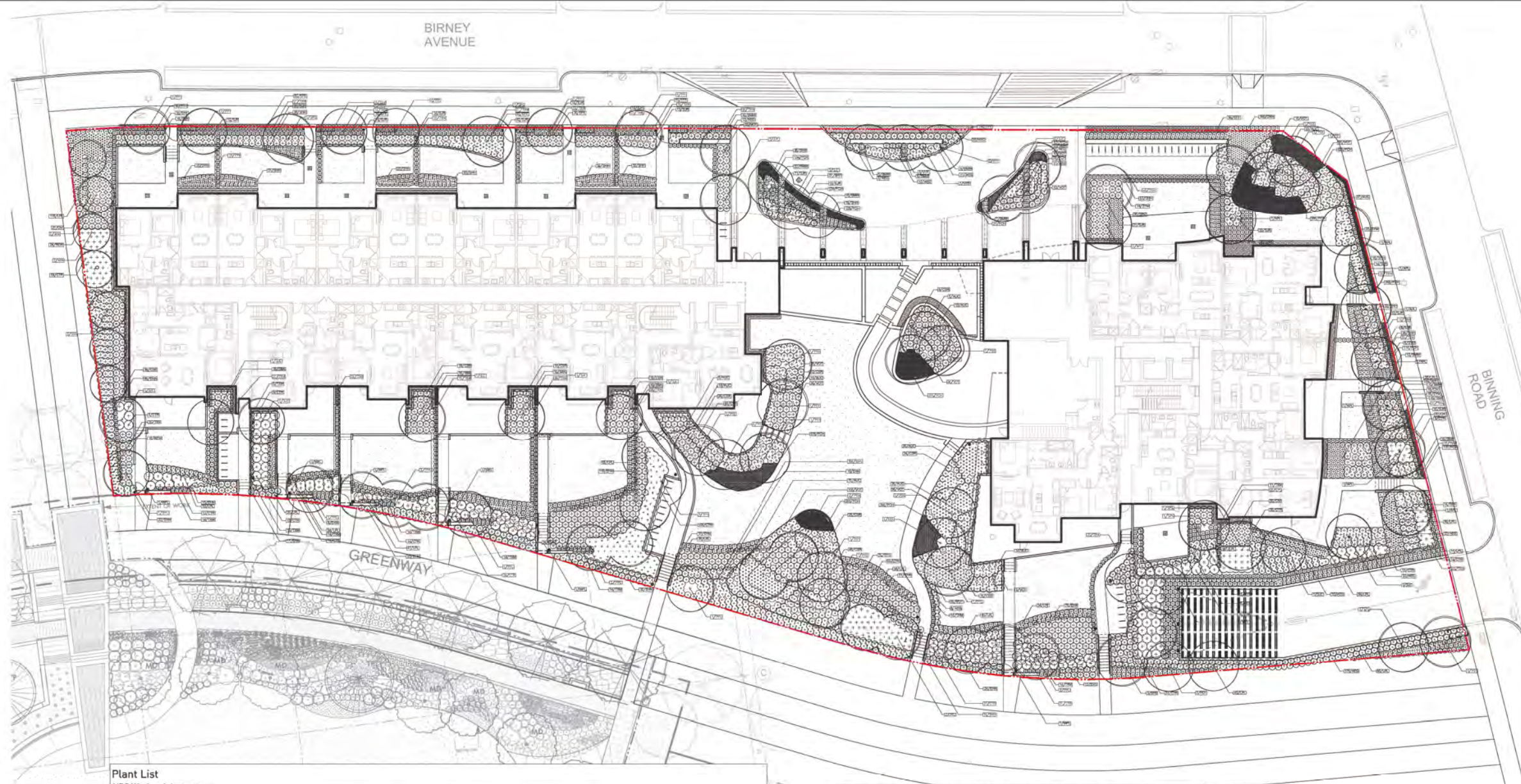


LANDSCAPE GRADING PLAN



KEY	DESCRIPTION
EL 3.12	EXISTING ELEVATION
EL 3.12	PROPOSED ELEVATION
FFE 3.12	FINISHED FLOOR ELEVATION
TS 3.12	PROPOSED TOP OF STAIR ELEVATION
BS 3.12	PROPOSED BOTTOM OF STAIR ELEVATION
TW 3.12	PROPOSED TOP OF WALL ELEVATION
BW 3.12	PROPOSED BOTTOM OF WALL ELEVATION
TC 3.12	PROPOSED TOP OF CURB ELEVATION

- GRADING GENERAL NOTES**
1. CONFIRM ALL EXISTING GRADES PRIOR TO CONSTRUCTION. REPORT ANY DISCREPANCIES TO CONSULTANT FOR REVIEW AND RESPONSE.
  2. UNLESS OTHERWISE NOTED PROVIDE A MINIMUM SLOPE OF 2% ON ALL HARD AND SOFT LANDSCAPE AREAS TO ENSURE POSITIVE DRAINAGE AWAY FROM BUILDINGS OR TO DRAINAGE STRUCTURES.
  3. UNLESS OTHERWISE NOTED MAXIMUM SLOPE OF SOFT LANDSCAPE AREAS TO BE 3:1 (33%). REPORT ANY DISCREPANCIES TO CONSULTANT FOR REVIEW AND RESPONSE.
  4. UNLESS OTHERWISE NOTED PROVIDE A MAXIMUM SLOPE OF 1% ON ALL HARD LANDSCAPE AREAS. REPORT ANY DISCREPANCIES TO CONSULTANT FOR REVIEW AND RESPONSE.
  5. SET INTO EXISTING ELEVATIONS AT EXTENT OF WORK CLEAN AND FLUSH. REPORT ANY DISCREPANCIES TO CONSULTANT FOR REVIEW AND RESPONSE.



**Plant List**  
*UBC Westbrook Laureates*

ID	Qty	Botanical Name	Common Name	Scheduled Size	Spacing	Remarks
<b>Trees</b>						
APL 26		<i>Acer palmatum 'Green'</i>	Green Japanese Maple	3.5 m H, x 1.8 m W, 117cm x 6" W	As Shown	B&B. Specimen and densely branched, no incised bark
AAZ 14		<i>Amelanchier x grandiflora 'Autumn Brilliance'</i>	Autumn Brilliance Serviceberry	4 cm cal. 11/12" cal.	As Shown	B&B. Multi-stemmed, dense tree
PPI 18		<i>Parrotia persica 'Inge's Ruby Vase'</i>	'RV' Persian Ironwood	5 cm cal. 12" cal.	As Shown	B&B. Straight trunk, uniform branching, 5 (1.5 m) std
PPU 28		<i>Parrotia persica - Upright form</i>	Persian Ironwood	5 cm cal. 12" cal.	As Shown	B&B. Straight trunk, uniform branching, 5 (1.5 m) std
PO1 22		<i>Picea sibirica</i>	Siberian Spruce	1.5 m H, 15-18" M	As Shown	B&B. Well branched, dense tree
PO3 12		<i>Picea amurica</i>	Siberian Spruce	---	As Shown	B&B. Well branched, dense tree
PO2 10		<i>Picea amurica</i>	Siberian Spruce	2.4 m H, 8'-0" M	As Shown	B&B. Well branched, dense tree
SPS 22		<i>Stewartia pseudocamelia</i>	Japanese Stewartia	5 cm cal. 12" cal.	As Shown	B&B. Well branched, dense tree
SLC 28		<i>Styrax japonica</i>	Japanese Snowbell	5 cm cal. 12" cal.	As Shown	B&B. Uniform branching, dense tree, 6' (1.8m) std.
<b>Shrubs</b>						
AEG 818		<i>Abelia 'Edwards Goucher'</i>	Edward Goucher Abelia	#3 pot	40 cm 124"	Well established
AUC 548		<i>Arbutus unedo 'Compacta'</i>	Compact Strawberry Tree	#3 pot	75 cm 130"	Well established
BMW 268		<i>Buxus microphylla 'Winter Gem'</i>	Winter Gem Boxwood	#3 pot	45 cm 118"	Well established
CHV 130		<i>Ceanothus impressus 'Videria'</i>	Brilliant Ceanothus	#3 pot	75 cm 130"	Well established
CTR 944		<i>Choisya ternata</i>	Mexican Orange Blossom	#3 pot	90cm 136"	Well established
CSR 636		<i>Cornus sericea</i>	Red-osier Dogwood	#2 pot	90 cm 136"	Well established, nursery grown
ESH 1450		<i>Escallonia 'Newport Dwarf'</i>	Newport Dwarf Escallonia	#2 pot	40cm 124"	Well established
REW 84		<i>Rhododendron williamsianum</i>	William Rhododendron	#3 pot	40cm 124"	Well established
SHH 1416		<i>Sarcococca hookeriana humilis</i>	Himalayan Sarcococca	#3 pot	45 cm 118"	Well established
SJR 590		<i>Skimmia japonica 'Rubella'</i>	Red Flowered Japanese Skimmia	#3 pot	40 cm 124"	Well established
SKY 60		<i>Skimmia reevesiana</i>	Reeves Skimmia	#3 pot	45 cm 118"	Well established
SBA 168		<i>Spiraea bumalda 'Anthony Waterer'</i>	Anthony Waterer Spiraea	#3 pot	40 cm 124"	Well established
SYM 134		<i>Symphoricarpos albus</i>	Snowberry	#3 pot	40 cm 124"	Well established, nursery grown
TKM 1546		<i>Taxus x media 'N.M. Eddie'</i>	N.M. Eddie tree	1.2m	40 cm 116"	Well established, dense hedging plant / B & B
VOT 924		<i>Vaccinium ovatum 'Thunderbird'</i>	Thunderbird Evergreen Huckleberry	#3 pot	40 cm 124"	Well established, nursery grown
<b>Ground Cover</b>						
EFE 1104		<i>Eucyrtus fortunei 'Emerald Gaiety'</i>	Emerald Gaiety Wintercreeper	#1 pot	38 cm 115"	25cm 10" spread. Minimum 3 loads
FCH 8432		<i>Fragaria chiloensis</i>	Beach Strawberry	#1 pot	30 cm 112"	13cm 4" height. Well established, nursery grown
LPL 2174		<i>Lonicera pileolata</i>	Privet Honey suckle	#1 pot	45 cm 118"	39 cm 112" spread
<b>Vines</b>						
WFL 18		<i>Wisteria 'Florihunda' (variety)</i>	Japanese Wisteria	#5 pot	As Shown	Staked, full development

NOTE: ALL EXISTING STREET TREES TO BE RETAINED AND PROTECTED

**IRRIGATION NOTES**  
1. ALL PLANTING AREAS TO BE IRRIGATED WITH A HIGH EFFICIENCY AUTOMATED SYSTEM.

**PLANTING GENERAL NOTES**  
1. ALL PLANTS ARE TO CONFORM TO THE STANDARD SPECIFIED IN THE LATEST EDITION OF THE BC LANDSCAPE STANDARD. THE STANDARD IS PUBLISHED BY THE BC SOCIETY OF LANDSCAPE ARCHITECTS AND BC LANDSCAPE AND NURSERY ASSOCIATION.  
2. SEARCH AREA FOR PLANT MATERIAL IS TO INCLUDE ALL OF WESTERN NORTH AMERICA.  
3. PLANT MATERIAL SIZES SPECIFIED IN THE PLANT LIST ARE THE MINIMUM ACCEPTABLE SIZES FOR MATERIAL SUPPLIED FOR THIS PROJECT.  
4. PLANTS WILL BE WELL ESTABLISHED AND UNIFORM IN SHAPE.  
5. PLANTS WILL BE NURSERY GROWN UNLESS NOTED OTHERWISE.  
6. THE CONTRACTOR SHALL PROVIDE A GROWING MEDIUM ANALYSIS FOR REVIEW BY THE CONSULTANT AS PER SPECIFICATIONS PRIOR TO THE START OF CONSTRUCTION. GROWING MEDIUM SUPPLIED TO THE SITE OR PLACED ON SITE PRIOR TO REVIEW BY THE CONSULTANT WILL BE REJECTED.  
7. CONTRACTOR TO CONFIRM PLANT QUANTITIES ON DRAWING CORRESPOND TO THOSE INDICATED ON THE PLANT LIST. REPORT ANY DISCREPANCIES TO CONSULTANT FOR REVIEW AND RESPONSE.  
8. PLANT LIST IS TO BE READ IN CONJUNCTION WITH SPECIFICATIONS.  
9. PRIOR TO THE START OF CONSTRUCTION THE CONTRACTOR IS TO CONFIRM THE AVAILABILITY OF PLANT MATERIAL AS PER SPECIFICATIONS. PLANT SUBSTITUTIONS NOT CONFIRMED WITH THE CONSULTANT WILL BE REJECTED.

