



Landscape Architecture
Site Planning

R. Kim Perry & Associates Inc.
200 - 1558 W 6th Avenue
Vancouver, BC V6J 1R2

T 604 738 4118
F 604 738 4116
www.perryandassociates.ca

December 3, 2013

**UBC South Campus Lot 32, Vancouver BC
DP Comments Res**

Integration with Mundell Park

- Panel believes that more work needs to be done to ensure a better flow between Mundell Park and the development. It feels cut off and disconnected.

- Look at the possibility of bringing Mundell Park into the site; perhaps lose some of the water to create a stronger visual link.

- Emphasize more focus at the open space to Mundell Park to attract both residents and visitors. Explore combining the two communal outdoor spaces into one close to the Park to achieve a critical mass and transition between the Park and the project. AUDP Minutes November, 2013

Response:

We have reviewed the relationship between the site and the park in response to the design panel discussion and have made adjustments to the design to facilitate more continuity between the two spaces. The following are specific changes to the plan:

- As the project construction will entail the temporary removal and storage of the adjacent Mundell Park planting along the north east portion of the site we have made adjustments to the Mundell Park planting to relocate some of the shrub planting and tree planting to facilitate views both into and out of the site and to continue lines of planting in the park toward the site.
- We have used the same palette of plant materials for the project to match and blend with the Mundell Park planting
- Our plans previously showed a low brick faced wall defining the northeast property line along the Mundell Park frontage. We have now removed this wall along the Mundell Park. Additionally the walkways into the site from the park will not be gated.
- We have provided an additional section (9/L4.1) through this edge condition to better illustrate the relationship between the two spaces.
- We have added rain water connections to allow roof runoff from building 1 to connect directly to the south campus storm water system

Working Landscape

- There are concerns over the amount of water being used, the evaporation rate and the amount of irrigation that would be needed. As this is life-long energy intensive project, the landscaping should respond to reduce energy consumption such as the use of plants to filter the water. Strong panel emphasis on the usage of as little water from the tap as possible and possible storm water retention.

- Consider the possibility of a natural dry look in summer and full in winter.

R. Kim Perry, BCSLA, CSLA, ASLA, Principal
Robert Barnes, BCSLA, CSLA, Principal
Michael Patterson, BCSLA, CSLA, Principal



Landscape Architecture
Site Planning

Response:

The ponds have been designed to be still bodies of water with limited loss of water due to bubbler sprays or evaporation due to agitation of the water surface. We have provided below a comparison of the amount of water lost to evaporation from the proposed water feature through 12 weeks of summer versus the amount of water that would be lost to irrigation for the same area during a 3-month period through the summer. We have provided a further calculation for the irrigation based on the typical 20 weeks per year that require irrigation for projects in the lower mainland built over an underground parkade. The irrigation calculation is based on 1" of water per week.

area of water feature: 832m²
typical water consumption: 1" of water per week = 25.4L / m² / week

calculation #1: 12 weeks / year
832m² x 25.4L = 21,133L / week
21,133L x 12 weeks = 253,596L / year
= 66,993 gallons / year

calculation #2: 20 weeks / year
832m² x 25.4L = 21,133L / week
21,133L x 20 weeks = 422,660L / year
= 111,655 gallons / year

The amount of water lost to evaporation for 12 weeks of summer using Basic pan evaporation data from Dept of Agriculture of 10.26" total for June - August.

8950 SF pool X 0.855' = 7652 cu ft x 7.4805 (conversion factor) = 57,242 USG

As can be seen from a comparison of the calculations the amount of water lost if the courtyard were irrigated is substantially more than the water lost from the ponds due to evaporation. We have avoided placing planting and topsoil in the ponds in order to avoid excess nutrients from entering the pond and the potential for algal growth. In this situation the strata will resort to using traditional pool chemicals to control the excessive organic growth to maintain the water quality.

Michael Patterson, BCSLA, CSLA, Principal
R. Kim Perry & Associates Inc.

www.perryandassociates.ca



Rositch Hemphill Architects

120 Powell Street, Unit 10
Vancouver, BC Canada
V6A 1G1

t 604.669.6002
f 604.669.1091

www.rharchitects.ca

ISSUED:	DATE:
1. DP REVIEW by UBCPT	OCT.21.2013
2. DPA	OCT.28.2013
3. PERFORMANCE TENDER	NOV.18.2013
3. DP RE-SUBMISSION	DEC. 3.2013
4. DPA RE-SUBMISSION	DEC.11.2013

ISSUED FOR
DP RE-SUBMISSION
December 11, 2013

NO. REVISION:	DATE:
---------------	-------

This drawing as an instrument of service is the property of Rositch Hemphill Architects and may not be reproduced without the firm's permission. All information shown on the drawing is for use in this specific project only and shall not be used otherwise without written permission from this office. Contractors shall verify and be responsible for all dimensions on the job and this office shall be informed of any discrepancies and variations shown on drawing.

ARCHITECTURAL SEAL:

CLIENT:



PROJECT:
**PRODIGY at LOT 32
UBC South Campus**
Gray Avenue and Ross Road

DRAWING TITLE:
**LANDSCAPE
DESIGN RATIONALE**

DATABASE: 1322-A0.5.dwg
SCALE: AS NOTED
PLOTDATE: DEC. 3.2013
DRAWN: AY/GJ
CHECKED:

PROJECT NO. **1322**

DWG. NO. **A0.10**

D.P. No:
B.P. No:



4	Issued for DP Board	12/11/13
3	DP Resubmission	12/3/13
2	Issued for Performance Tender	11/18/13
1	Issued for DP	10/28/13
	Revision No.	Date

COPYRIGHT RESERVED
 This drawing is and shall remain the property of R. Kim Perry & Associates Inc., and R. Kim Perry & Associates Inc. shall retain the copyright therein. This document shall not be reproduced or used for additions or alterations to the project or for the purpose of any other project without the prior written consent of R. Kim Perry & Associates Inc.



Project Title:
**PRODIGY at LOT 32
 UBC South Campus**

Drawing Title:
**Landscape
 Plan**

Project North:	Drawn By:	JP
	Checked By:	MP
Scale:	Job No.:	13-045
Sheet No.:		

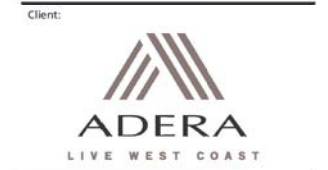


DETAIL KEY LEGEND

1 L5.0	CONCRETE PAVING (PEDESTRIAN)
2 L5.0	CONCRETE UNIT PAVING
3 L5.0	STONE PAVING
4 L5.0	WOOD DECK
5 L5.0	CONCRETE PLANTER WALL ON-SLAB
6 L5.0	CONCRETE WALL w/ BRICK FACING ON-SLAB
7 L5.0	CONCRETE POOL WALL ON-SLAB
8 L5.1	WATER FEATURE - WEIR
9 L5.1	PRECAST CONCRETE BENCH QTY. 4
10 L5.1	PRECAST CONCRETE CHAIR QTY. 7
11 L5.1	BICYCLE RACK
12 L5.1	CONCRETE STAIRS
13 L5.1	CONCRETE SEAT WALL

4	Issued for DP Board	12/11/13
3	DP Resubmission	12/3/13
2	Issued for Performance Tender	11/18/13
1	Issued for DP	10/28/13
	Revision No.	Date

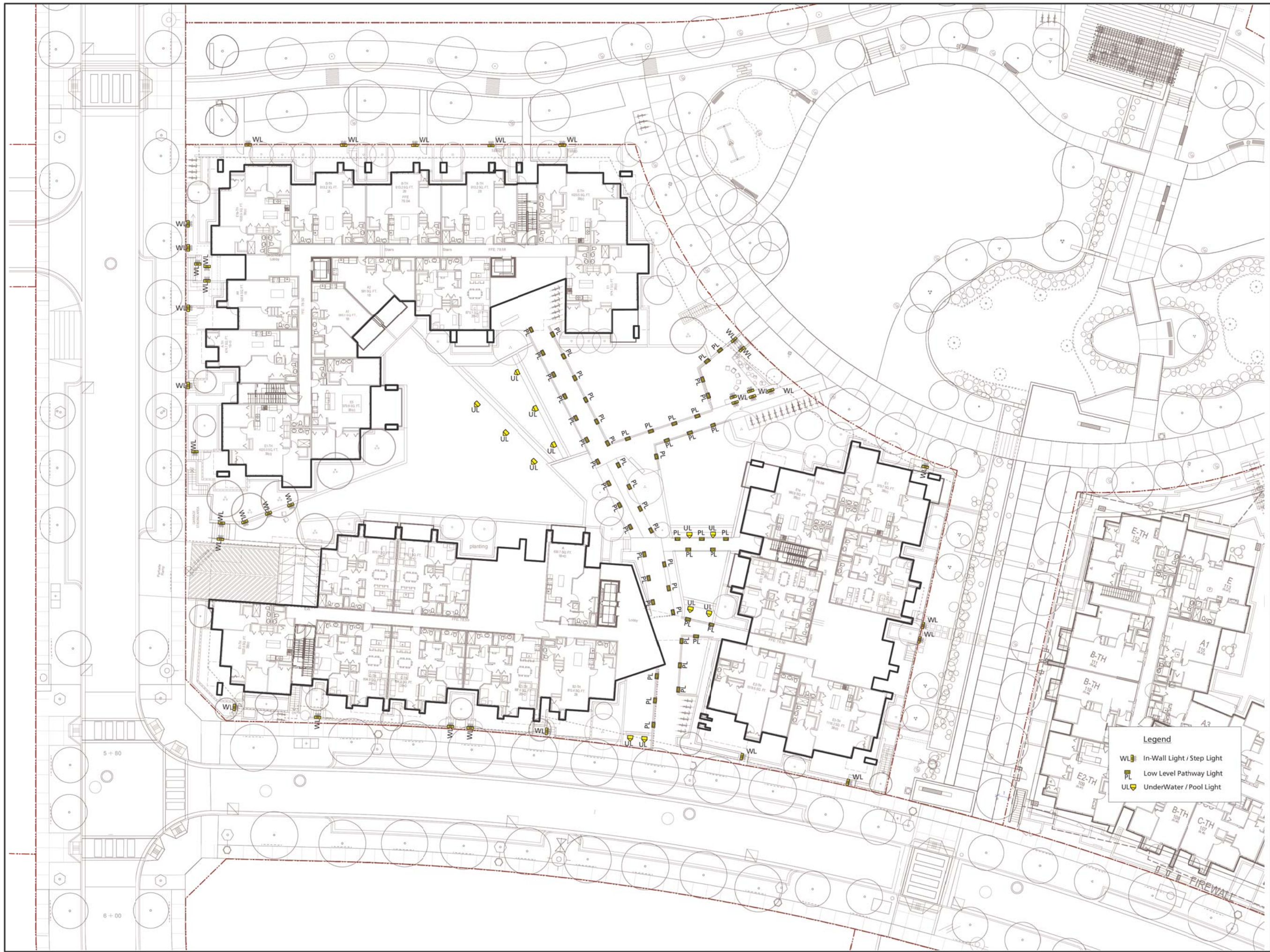
COPYRIGHT RESERVED
 This drawing is and shall remain the property of R. Kim Perry & Associates Inc., and R. Kim Perry & Associates Inc. shall retain the copyright therein. This document shall not be reproduced or used for additions or alterations to the project or for the purpose of any other project without the prior written consent of R. Kim Perry & Associates Inc.



Project Title:
**PRODIGY at LOT 32
 UBC South Campus**

Drawing Title:
**Landscape
 Key Plan**

Project North:	Drawn By:	JP
	Checked By:	MP
Scale:	Job No.:	13-045
Sheet No.:		



4	Issued for DP Board	12/11/13
3	DP Resubmission	12/3/13
2	Issued for Performance Tender	11/18/13
1	Issued for DP	10/28/13
Revision No.		Date

COPYRIGHT RESERVED
 This drawing is and shall remain the property of R. Kim Perry & Associates Inc., and R. Kim Perry & Associates Inc. shall retain the copyright therein. This document shall not be reproduced or used for additions or alterations to the project or for the purpose of any other project without the prior written consent of R. Kim Perry & Associates Inc.

Client:



Project Title:

**PRODIGY at LOT 32
 UBC South Campus**

Drawing Title:

**Landscape Lighting
 Coordination Plan**

Project North: Drawn By: JP

Checked By: MP

Scale: 1:200 Job No.: 13-045

Sheet No.:

Legend

- WL In-Wall Light / Step Light
- PL Low Level Pathway Light
- UL UnderWater / Pool Light



GRADING AND DRAINAGE LEGEND

- + FFE 79.04 FINISHED FLOOR ELEVATION
- + FG 99.23 FINISHED GRADE
- + TW 96.40 TOP OF WALL GRADE
- + TS 95.20 TOP OF STAIR GRADE
- + TR 94.20 TOP OF RAMP GRADE
- + EX 94.00 EXISTING GRADE
- + RM 94.15 RM ELEVATION
- + CB CATCH BASIN - CONNECTED TO STORM
- + HD AREA DRAIN - REFER TO MECH
- + PD PLANTER DRAIN
- + LB LAWN BASIN

4	Issued for DP Board	12/11/13
3	DP Resubmission	12/3/13
2	Issued for Performance Tender	11/18/13
1	Issued for DP	10/28/13
	Revision No.	Date

COPYRIGHT RESERVED
 This drawing is and shall remain the property of R. Kim Perry & Associates Inc., and R. Kim Perry & Associates Inc. shall retain the copyright therein. This document shall not be reproduced or used for additions or alterations to the project or for the purpose of any other project without the prior written consent of R. Kim Perry & Associates Inc.

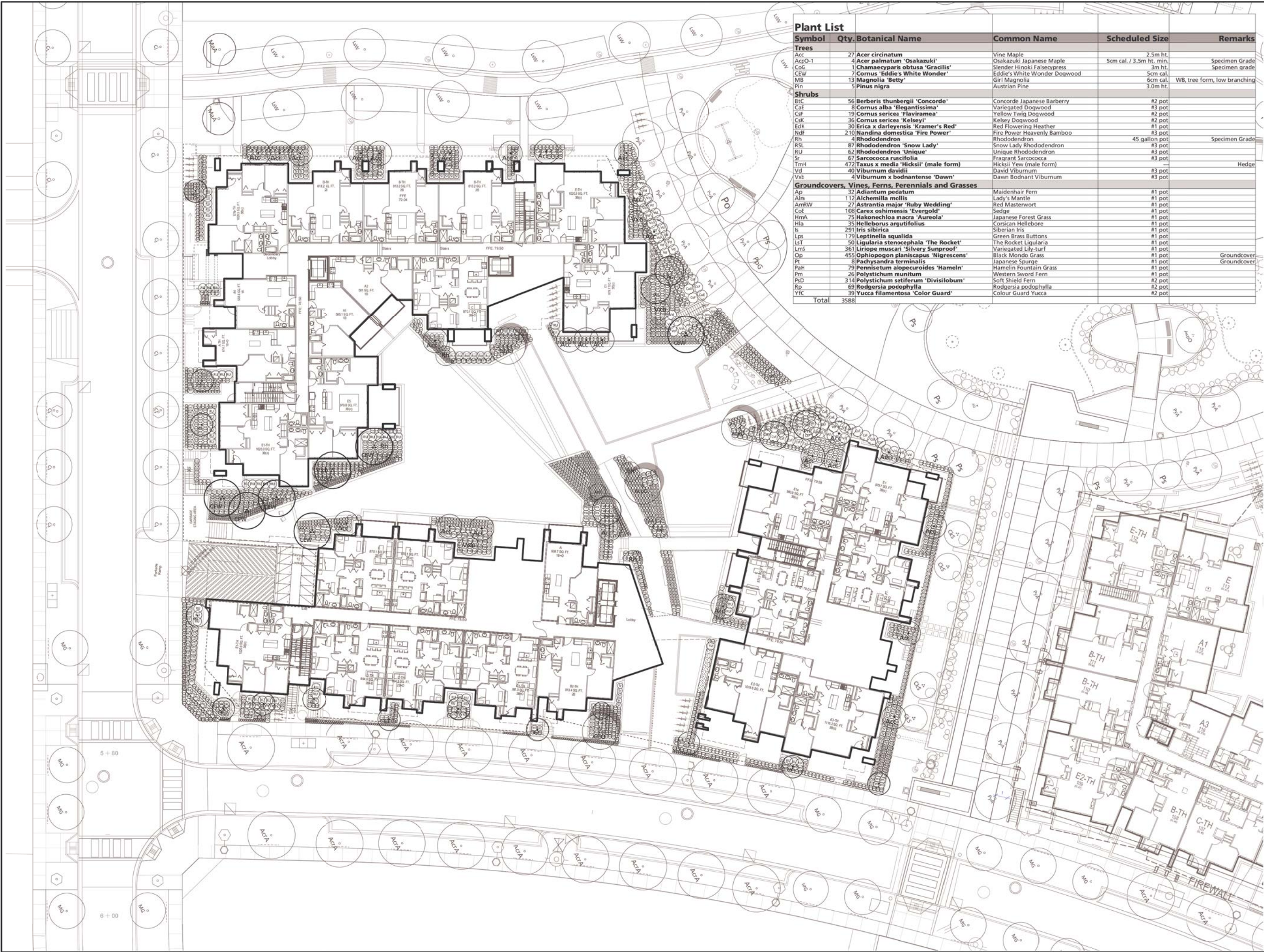


Project Title:
**PRODIGY at LOT 32
 UBC South Campus**

Drawing Title:
**Landscape
 Grading Plan**

Project North: Drawn By: JP
 Checked By: MP
 Scale: 1:200 Job No.: 13-045
 Sheet No.:

Symbol	Qty.	Botanical Name	Common Name	Scheduled Size	Remarks
Trees					
Acc	27	<i>Acer circinatum</i>	Vine Maple	2.5m ht.	
AcQ-1	4	<i>Acer palmatum</i> 'Osakazuki'	Osakazuki Japanese Maple	5cm cal. / 3.5m ht. min.	Specimen Grade
CoG	1	<i>Chamaecyparis obtusa</i> 'Gracilis'	Slender Hinoki Falsecypress	3m ht.	Specimen grade
CEW	7	<i>Cornus</i> 'Eddie's White Wonder'	Eddie's White Wonder Dogwood	5cm cal.	
MB	13	<i>Magnolia</i> 'Betty'	Girt Magnolia	5cm cal.	WB, tree form, low branching
Pin	5	<i>Pinus nigra</i>	Austrian Pine	3.0m ht.	
Shrubs					
BtC	56	<i>Berberis thunbergii</i> 'Concorde'	Concorde Japanese Barberry	#2 pot	
CaE	8	<i>Cornus alba</i> 'Elegantissima'	Variiegated Dogwood	#3 pot	
CoF	19	<i>Cornus sericea</i> 'Flaviramea'	Yellow Twig Dogwood	#2 pot	
CoK	36	<i>Cornus sericea</i> 'Kelsey'	Kelsey Dogwood	#2 pot	
EdK	30	<i>Erica x darleyensis</i> 'Kramer's Red'	Red Flowering Heather	#1 pot	
NdF	210	<i>Nandina domestica</i> 'Fire Power'	Fire Power Heavenly Bamboo	#3 pot	
Rh	4	<i>Rhododendron</i>	Rhododendron	45 gallon pot	Specimen Grade
RSI	87	<i>Rhododendron</i> 'Snow Lady'	Snow Lady Rhododendron	#3 pot	
RU	62	<i>Rhododendron</i> 'Unique'	Unique Rhododendron	#3 pot	
Sr	67	<i>Sarcococca racifolia</i>	Fragrant Sarcococca	#3 pot	
TmH	472	<i>Taxus x media</i> 'Hicksii' (male form)	Hicksii Yew (male form)	#3 pot	Hedge
Vd	40	<i>Viburnum davidii</i>	Dawn Viburnum	#3 pot	
Vxb	4	<i>Viburnum x bodnantense</i> 'Dawn'	Dawn Bodnant Viburnum	#3 pot	
Groundcovers, Vines, Ferns, Perennials and Grasses					
Ap	32	<i>Adiantum pedatum</i>	Maidenhair Fern	#1 pot	
Alm	112	<i>Alchemilla mollis</i>	Lady's Mantle	#1 pot	
AmRW	27	<i>Astrantia major</i> 'Ruby Wedding'	Red Masterwort	#1 pot	
CoE	108	<i>Carex oshimessis</i> 'Evergold'	Sedge	#1 pot	
HmA	75	<i>Hakonechloa macra</i> 'Aureola'	Japanese Forest Grass	#1 pot	
Hla	35	<i>Helleborus argutifolius</i>	Siberian Hellebore	#1 pot	
Is	291	<i>Iris sibirica</i>	Siberian Iris	#1 pot	
Lps	179	<i>Leptinella squalida</i>	Green Brass Buttons	#1 pot	
LST	50	<i>Ligularia stenocephala</i> 'The Rocket'	The Rocket Ligularia	#1 pot	
LmS	361	<i>Liriope muscari</i> 'Silvery Sunproof'	Variiegated Lily-turf	#1 pot	
Op	455	<i>Ophiopogon planiscapus</i> 'Nigrescens'	Black Mondo Grass	#1 pot	Groundcover
Pa	8	<i>Pachysandra terminalis</i>	Japanese Spurge	#1 pot	Groundcover
PAH	79	<i>Pennisetum alopecuroides</i> 'Hameln'	Hameln Fountain Grass	#1 pot	
Pm	26	<i>Polystichum nunitum</i>	Western Sword Fern	#1 pot	
PxD	314	<i>Polystichum setiferum</i> 'Divisilobum'	Soft Shield Fern	#2 pot	
Rp	69	<i>Rodgersia podophylla</i>	Rodgersia podophylla	#2 pot	
YIC	39	<i>Yucca filamentosa</i> 'Color Guard'	Colour Guard Yucca	#2 pot	
Total		3588			



4	Issued for DP Board	12/11/13
3	DP Resubmission	12/3/13
2	Issued for Performance Tender	11/18/13
1	Issued for DP	10/28/13
	Revision No.	Date

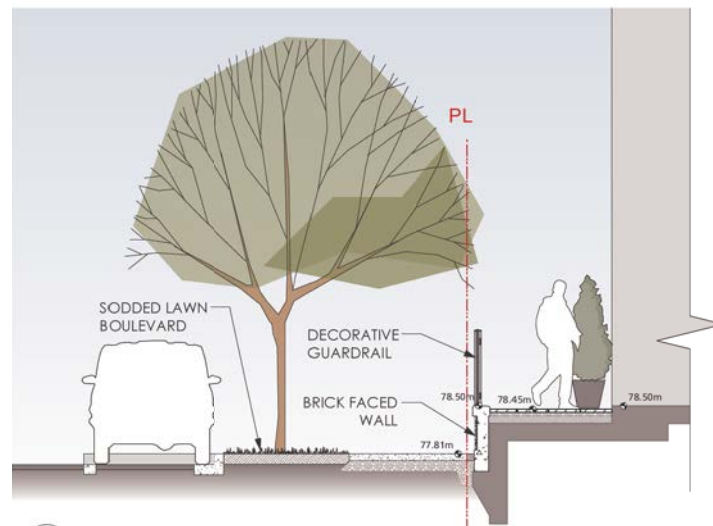
COPYRIGHT RESERVED
 This drawing is and shall remain the property of R. Kim Perry & Associates Inc., and R. Kim Perry & Associates Inc. shall retain the copyright therein. This document shall not be reproduced or used for additions or alterations to the project or for the purpose of any other project without the prior written consent of R. Kim Perry & Associates Inc.



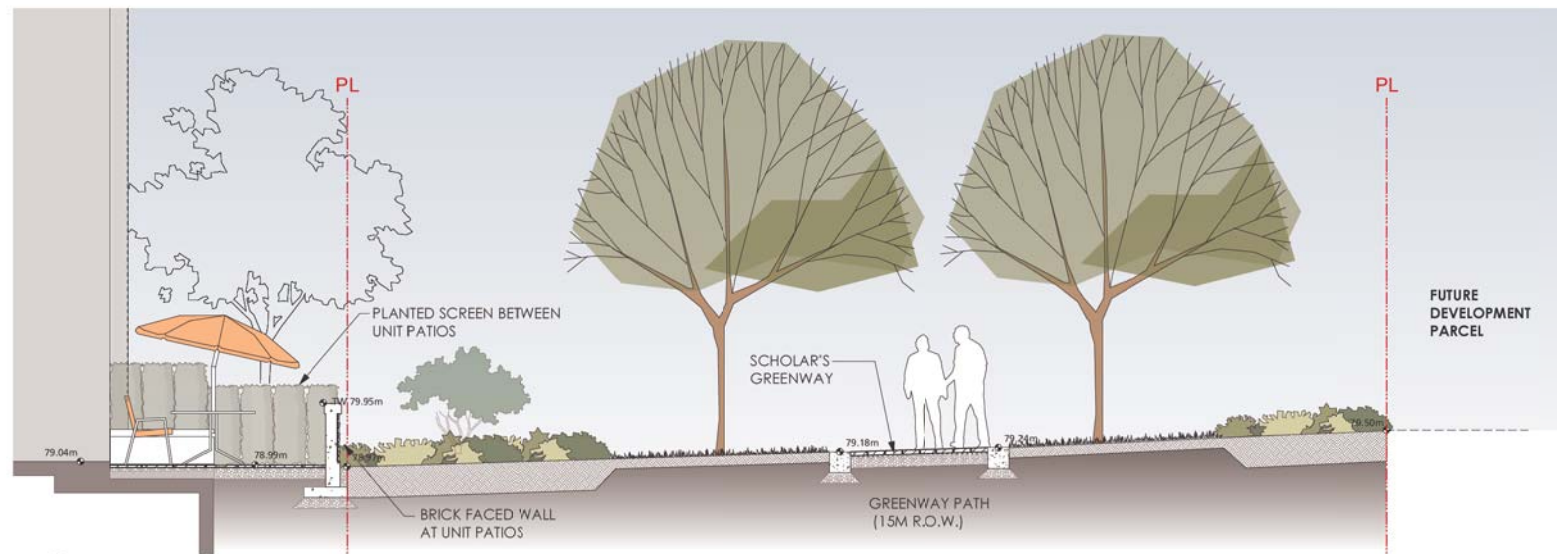
Project Title:
**PRODIGY at LOT 32
 UBC South Campus**

Drawing Title:
Planting Plan

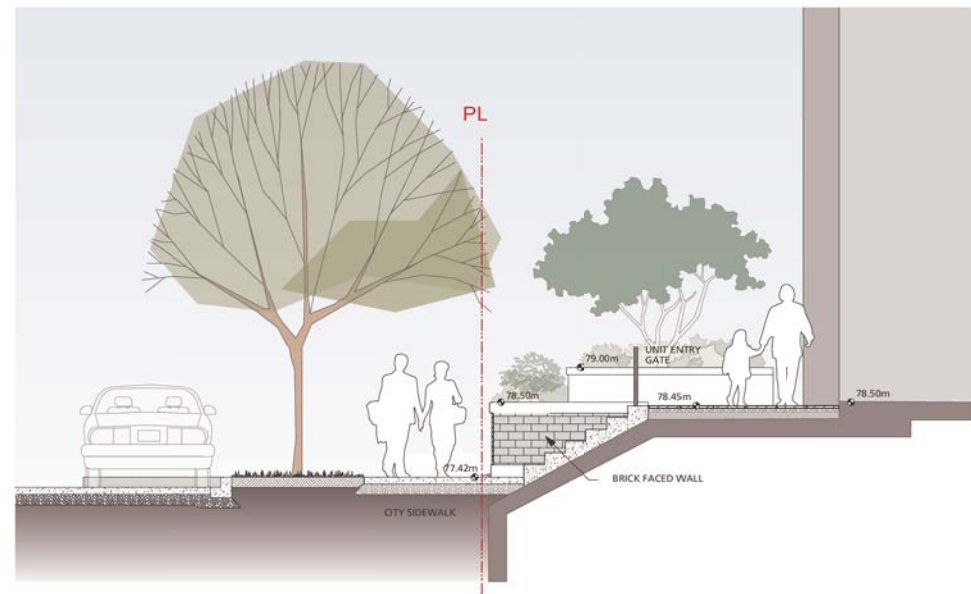
Project North:	Drawn By:	JP
	Checked By:	MP
Scale:	Job No.:	13-045
1:200		
Sheet No.:		



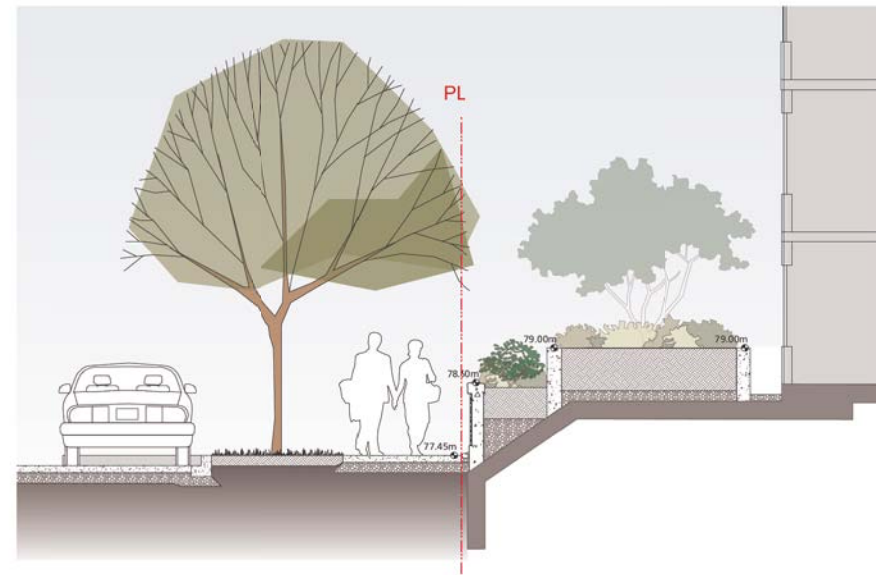
1 GREY AVENUE STREET SECTION
 Scale: 1:50



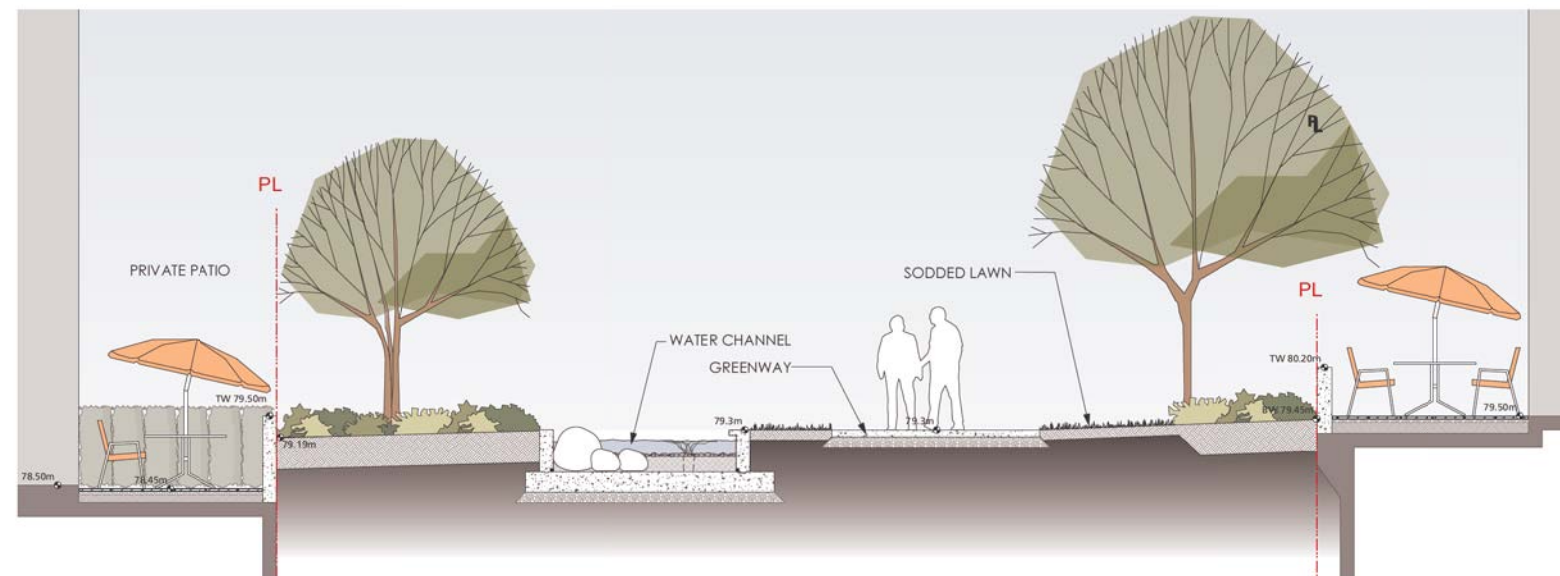
2 WEST GREENWAY PATIO SECTION
 Scale: 1:50



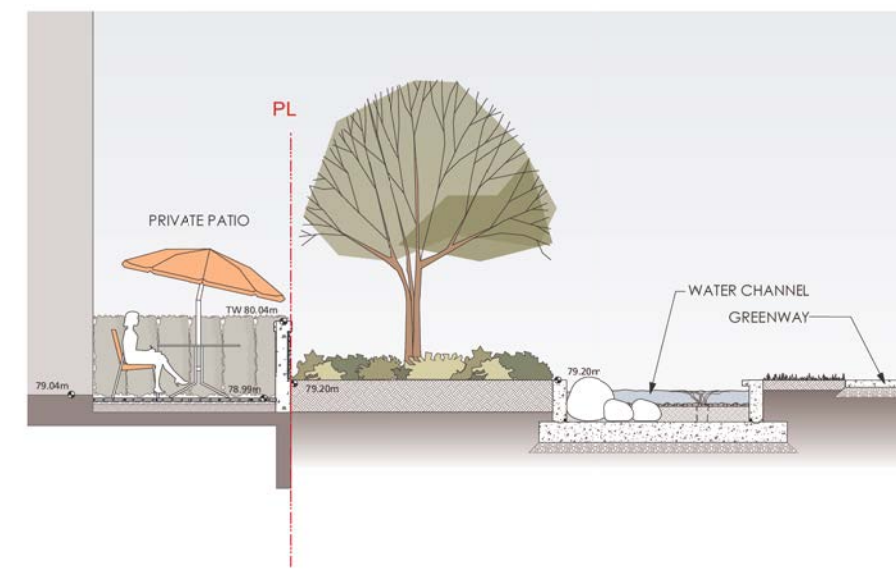
3 ROSS DRIVE STREET SECTION (PATIO)
 Scale: 1:50



4 ROSS DRIVE STREET SECTION (PLANTERS)
 Scale: 1:50



5 NORTH GREEN STREET (PATIO 1)
 Scale: 1:50



6 NORTH GREEN STREET (PATIO 2)
 Scale: 1:50

4	Issued for DP Board	12/11/13
3	DP Resubmission	12/3/13
2	Issued for Performance Tender	11/18/13
1	Issue for DP	10/28/13
	Revision No.	Date

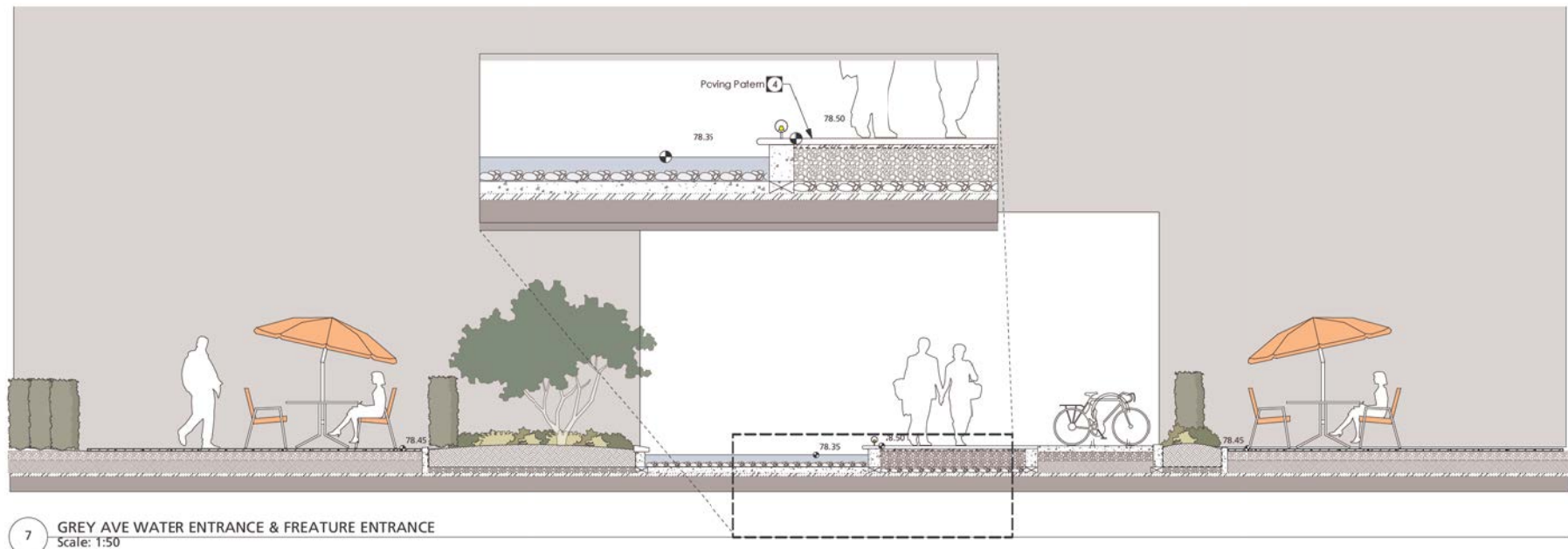
COPYRIGHT RESERVED
 This drawing is and shall remain the property of R. Kim Perry & Associates Inc., and R. Kim Perry & Associates Inc. shall retain the copyright therein. This document shall not be reproduced or used for additions or alterations to the project or for the purpose of any other project without the prior written consent of R. Kim Perry & Associates Inc.



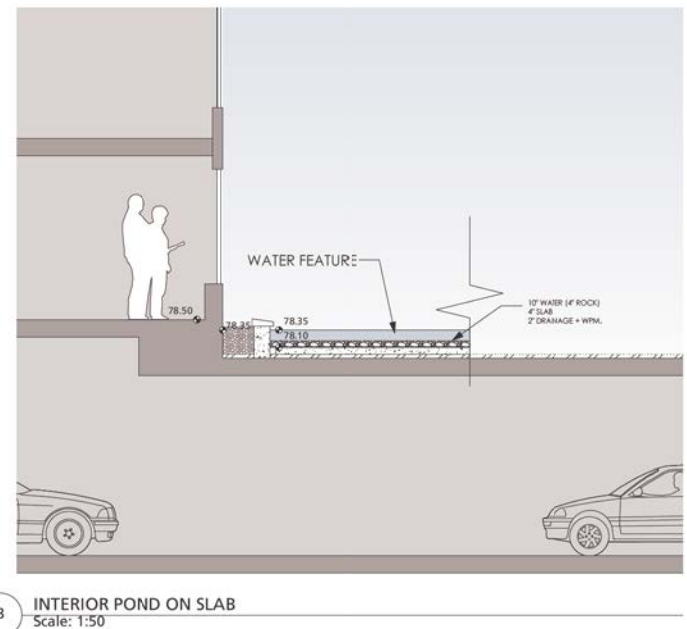
Project Title:
**PRODIGY at LOT 32
 UBC South Campus**

Drawing Title:
**Landscape
 Sections**

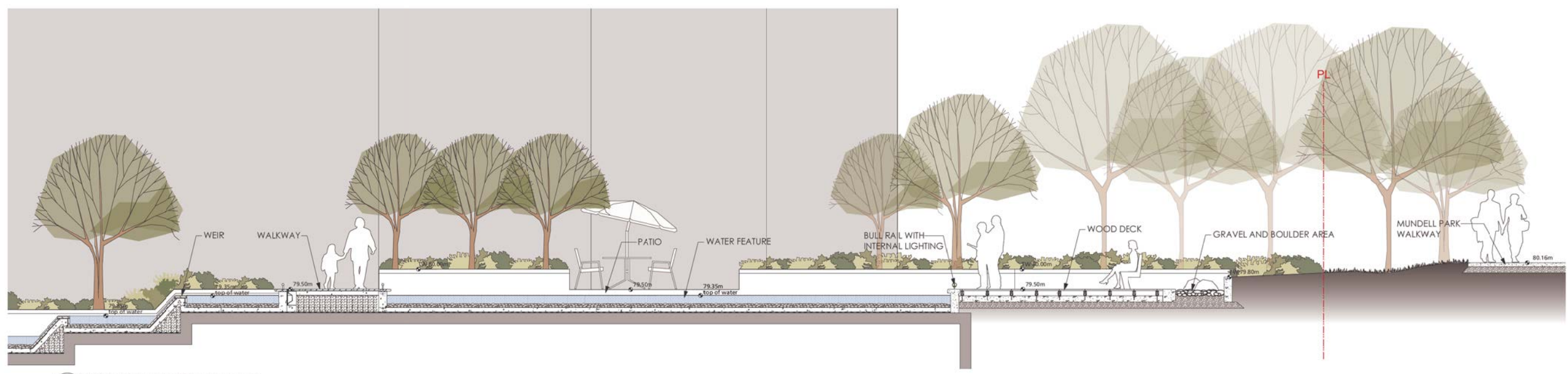
Project North:	Drawn By:	MG
	Checked By:	MP
Scale:	Job No.:	13-045
	as noted	
Sheet No.:		



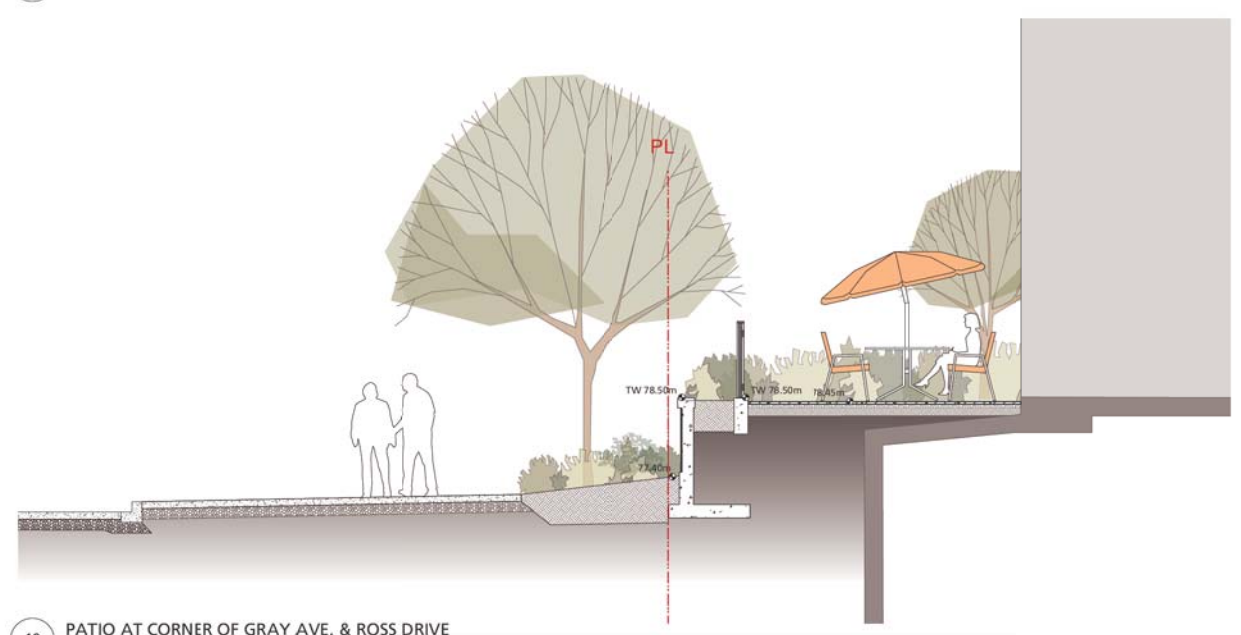
7 GREY AVE WATER ENTRANCE & FREATURE ENTRANCE
 Scale: 1:50



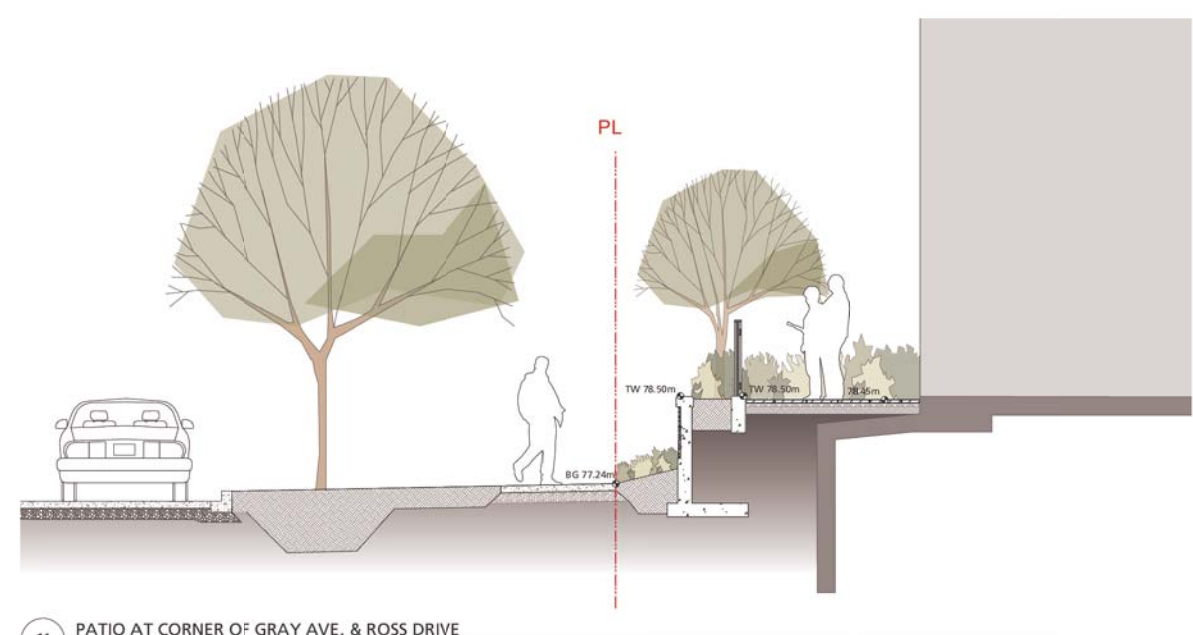
8 INTERIOR POND ON SLAB
 Scale: 1:50



9 WOOD DECK AND WATER FEATURE
 Scale: 1:50



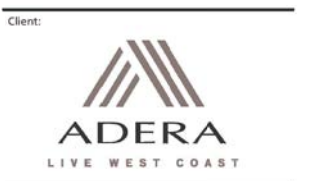
10 PATIO AT CORNER OF GRAY AVE. & ROSS DRIVE
 Scale: 1:50



11 PATIO AT CORNER OF GRAY AVE. & ROSS DRIVE
 Scale: 1:50

4	Issued for DP Board	12/11/13
3	DP Resubmission	12/3/13
2	Issued for Performance Tender	11/18/13
1	Issue for DP	10/28/13
	Revision No.	Date

COPYRIGHT RESERVED
 This drawing is and shall remain the property of R. Kim Perry & Associates Inc., and R. Kim Perry & Associates Inc. shall retain the copyright therein. This document shall not be reproduced or used for additions or alterations to the project or for the purpose of any other project without the prior written consent of R. Kim Perry & Associates Inc.

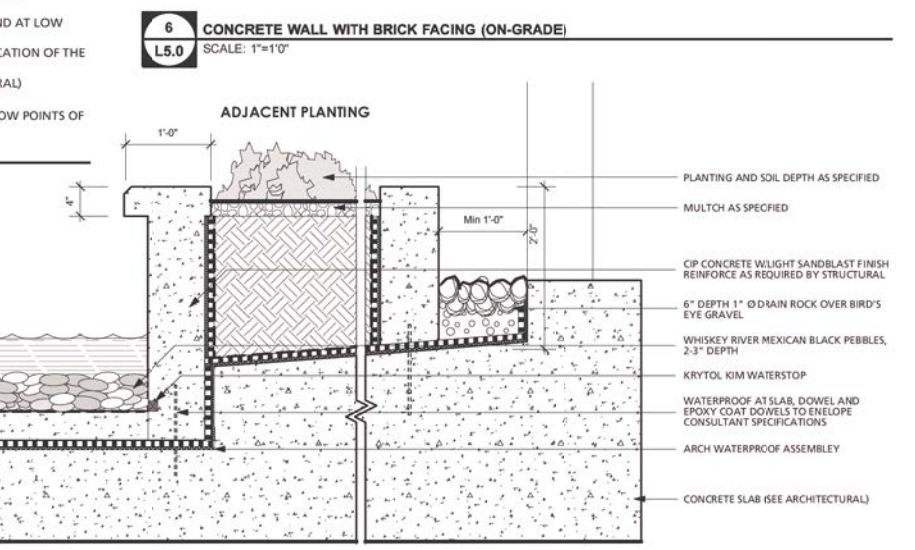
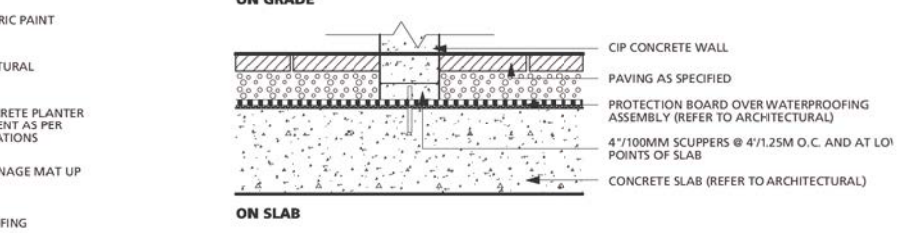
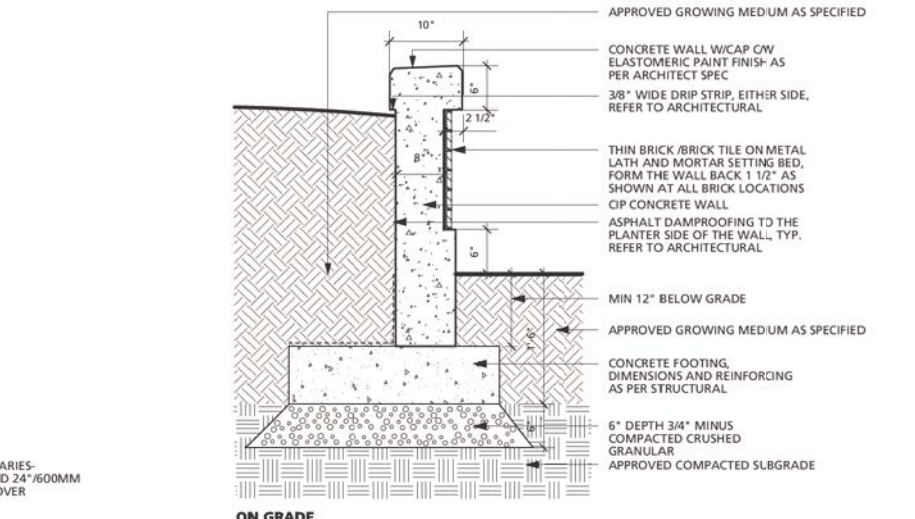
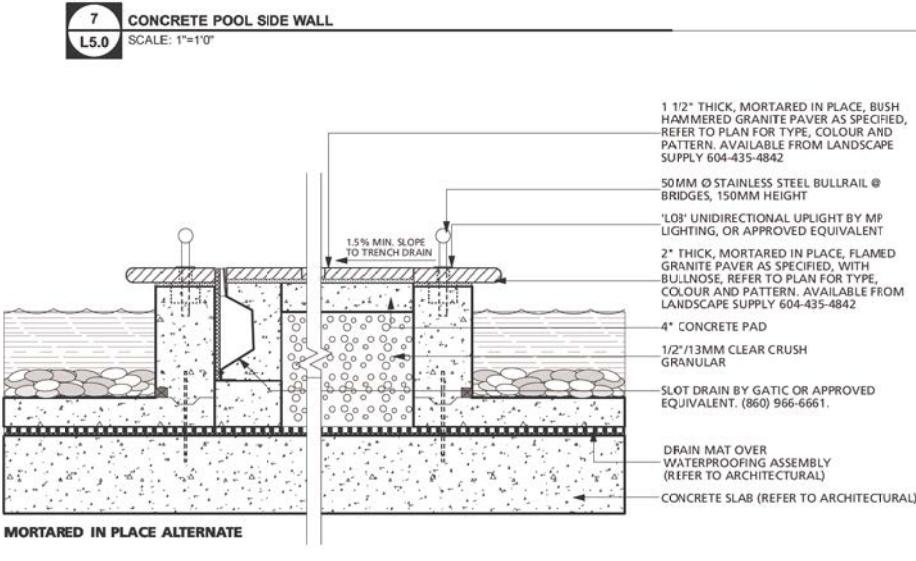
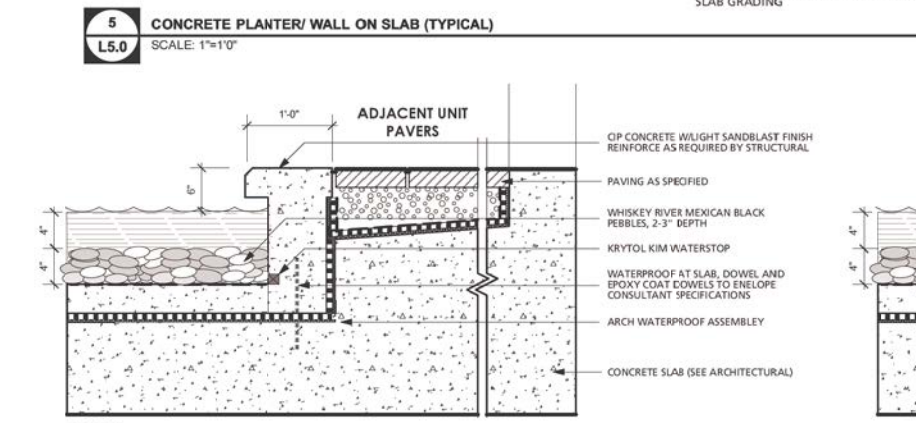
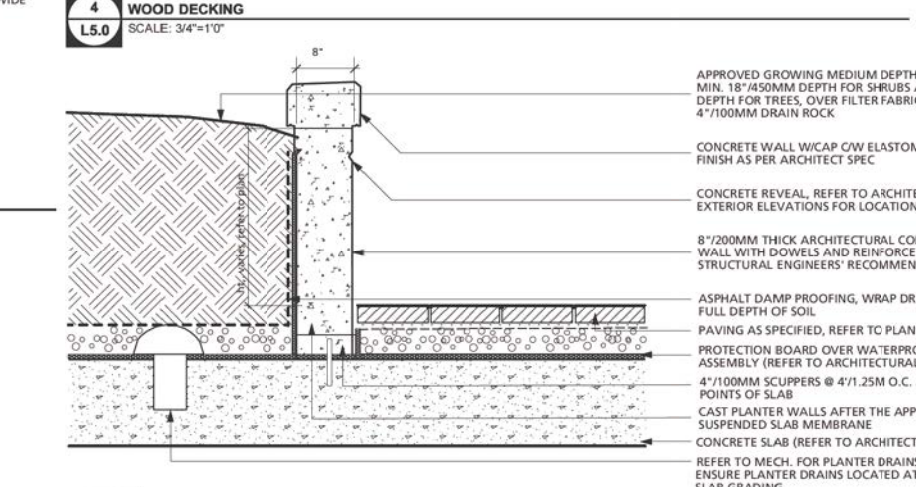
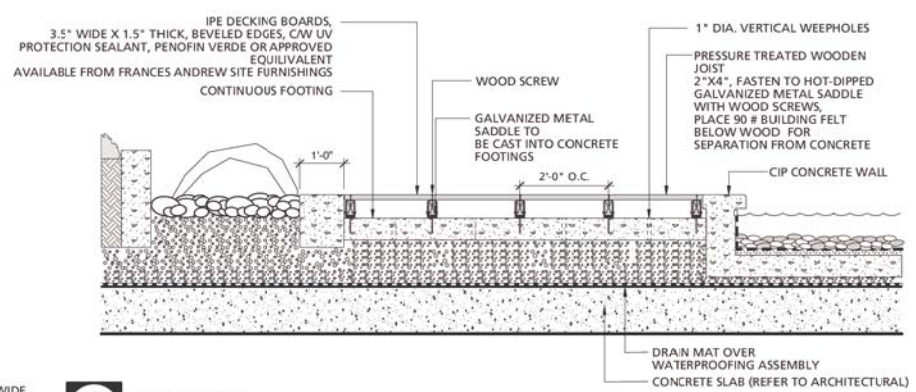
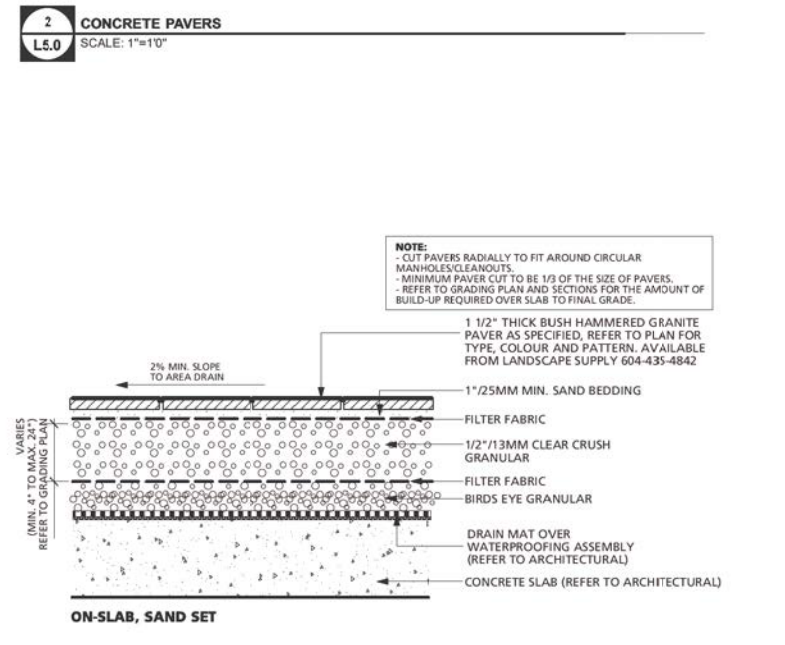
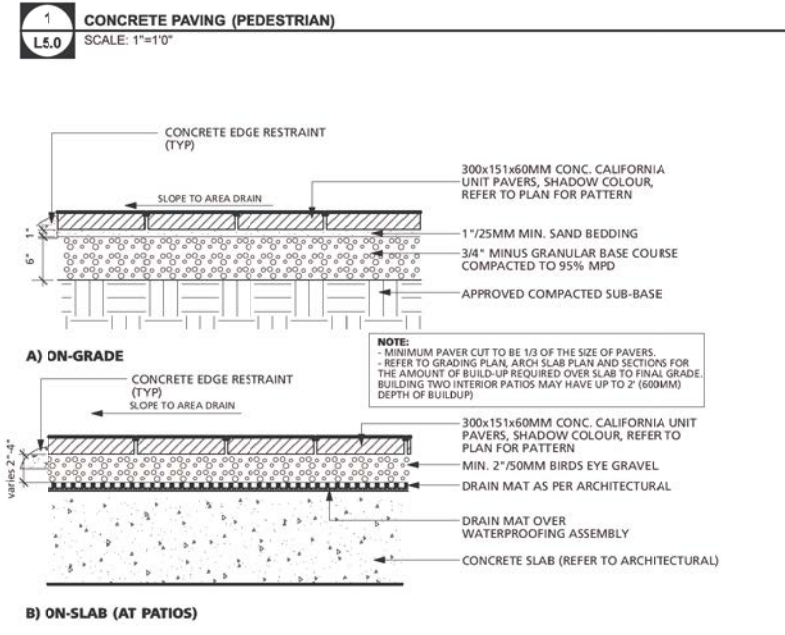
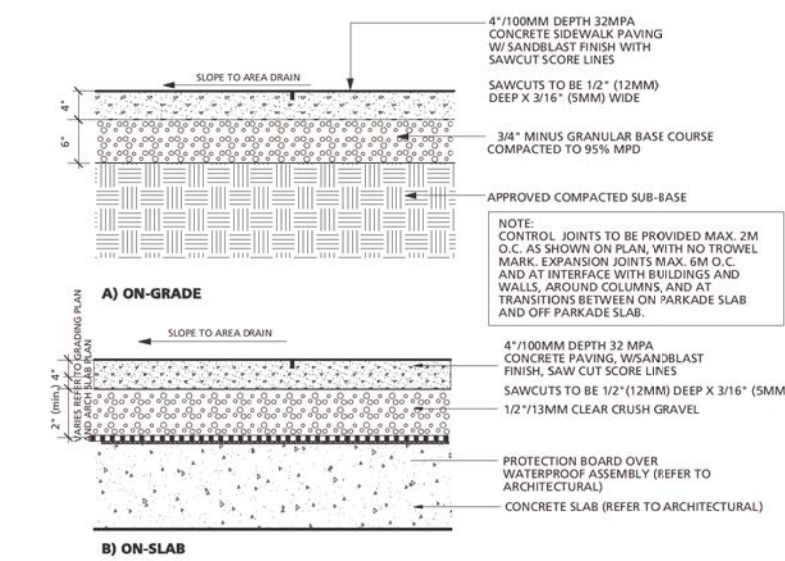


Client:
ADERA
 LIVE WEST COAST

Project Title:
PRODIGY at LOT 32 UBC South Campus

Drawing Title:
Landscape Sections

Project North: Drawn By: MG
 Checked By: MP
 Scale: as noted Job No.: 13-045
 Sheet No.:



4	Issued for DP Board	12/11/13
3	DP Resubmission	12/3/13
2	Issued for Performance Tender	11/18/13
1	Issued for DP	10/28/13
	Revision No.	Date

COPYRIGHT RESERVED
 This drawing is and shall remain the property of R. Kim Perry & Associates Inc. and R. Kim Perry & Associates Inc. shall retain the copyright therein. This document shall not be reproduced or used for additions or alterations to the project or for the purpose of any other project without the prior written consent of R. Kim Perry & Associates Inc.

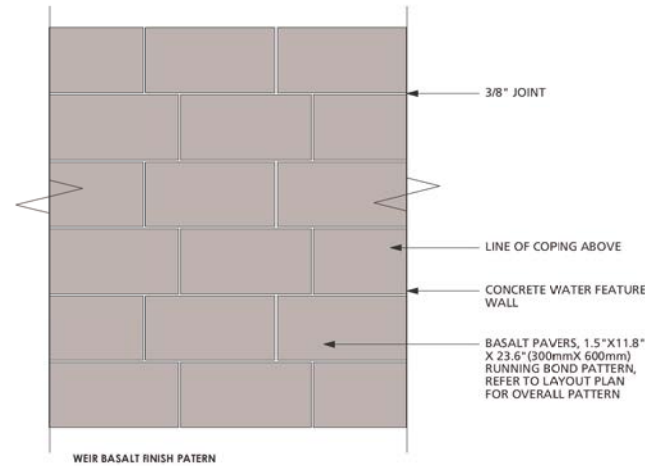
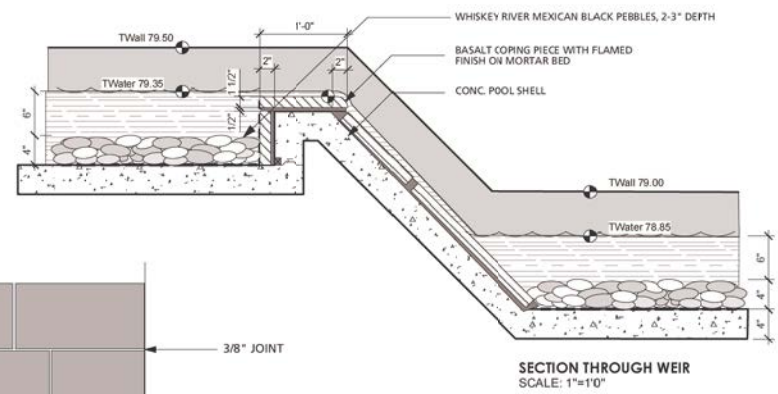
Client:

ADERA
 LIVE WEST COAST

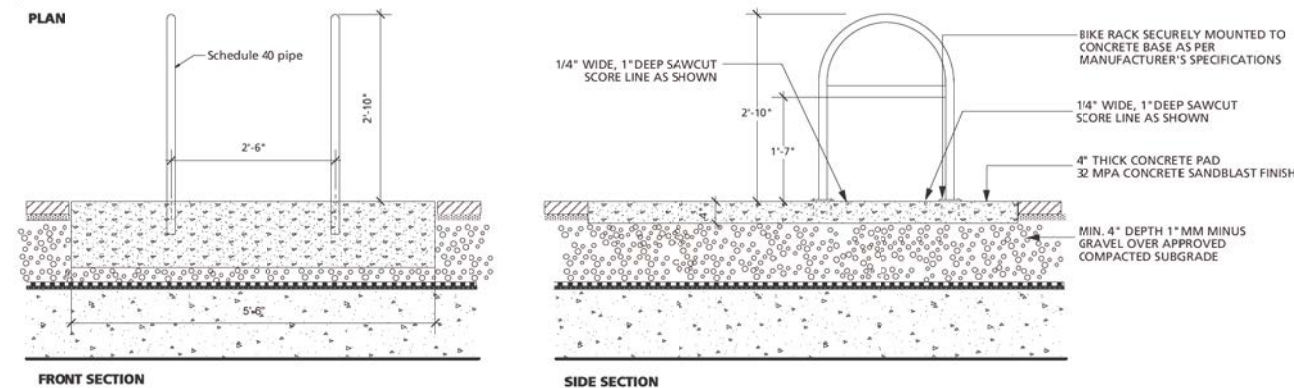
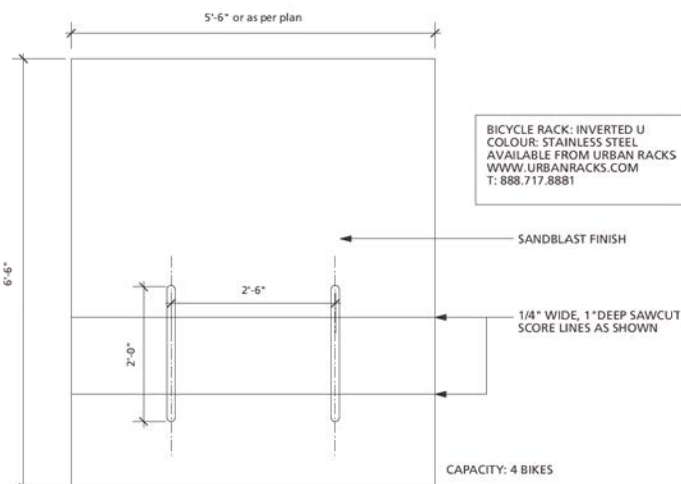
Project Title:
PRODIGY at LOT 32 UBC South Campus

Drawing Title:
Landscape Details

Project North: Drawn By: DS/JW
 Checked By: MP
 Scale: as noted Job No.: 13-045
 Sheet No.:

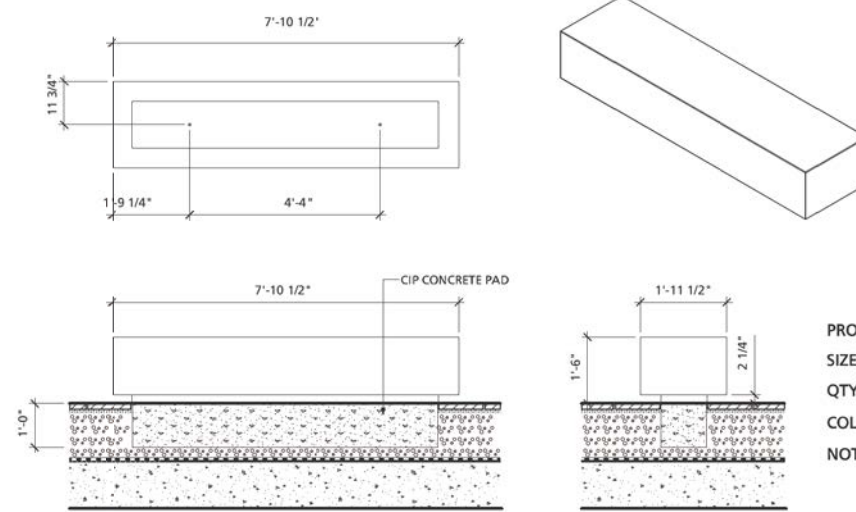


8 WATER WEIR DETAIL
L5.2 SCALE: 3/4\"=1'0"



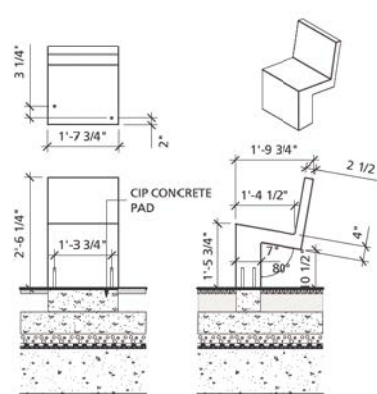
11 BICYCLE RACK
L5.1 SCALE: 3/4\"=1'0"

9 PRE CAST CONCRETE BENCH BY LANDSCAPE FORMS
L5.1 SCALE: 1/2\"=1'0"



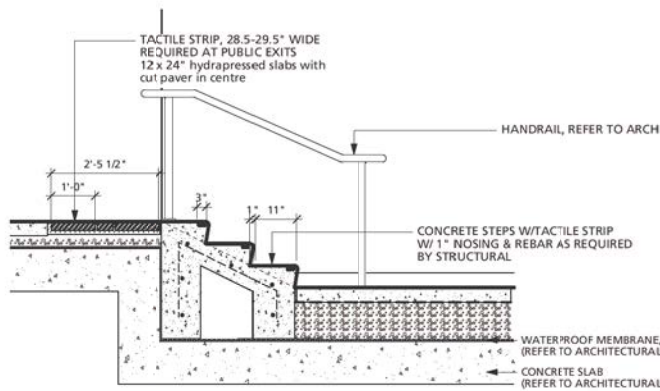
PRODUCT: SOCRATES BENCH BY LANDSCAPE FORMS OR APPROVED EQUAL
SIZE: 95\"/>

10 PRE CAST CONCRETE CHAIR BY LANDSCAPE FORMS
L5.1 SCALE: 1/2\"=1'0"

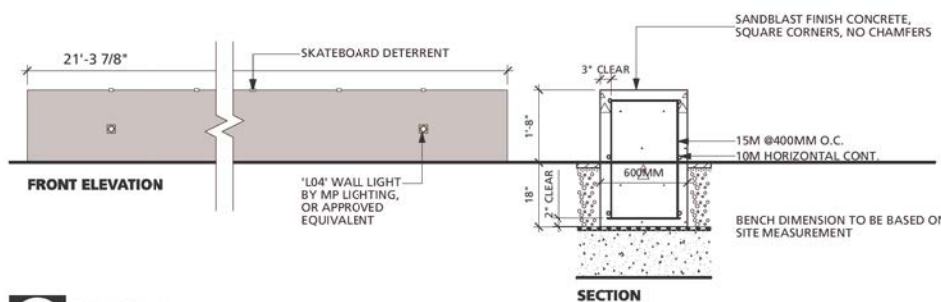


PRODUCT: SILLA REINFORCED CONCRETE CHAIR BY LANDSCAPE FORMS OR APPROVED EQUAL
SIZE: STD SIZE - 20\"/>

12 STAIRS
L5.1 SCALE: 1/2\"=1'0"



13 SEATING WALL
L5.1 SCALE: 1/2\"=1'0"



4	Issued for DP Board	12/11/13
3	DP Resubmission	12/3/13
2	Issued for Performance Tender	11/18/13
1	Issued for DP	10/28/13
	Revision No.	Date

COPYRIGHT RESERVED
This drawing is and shall remain the property of R. Kim Perry & Associates Inc. and shall retain the copyright therein. This document shall not be reproduced or used for additions or alterations to the project or for the purpose of any other project without the prior written consent of R. Kim Perry & Associates Inc.



Project Title:
PRODIGY at LOT 32
UBC South Campus

Drawing Title:
Landscape
Details

Project North:	Drawn By:	DS/JW
	Checked By:	MP
Scale:	Job No.:	13-045
as noted		
Sheet No.:		