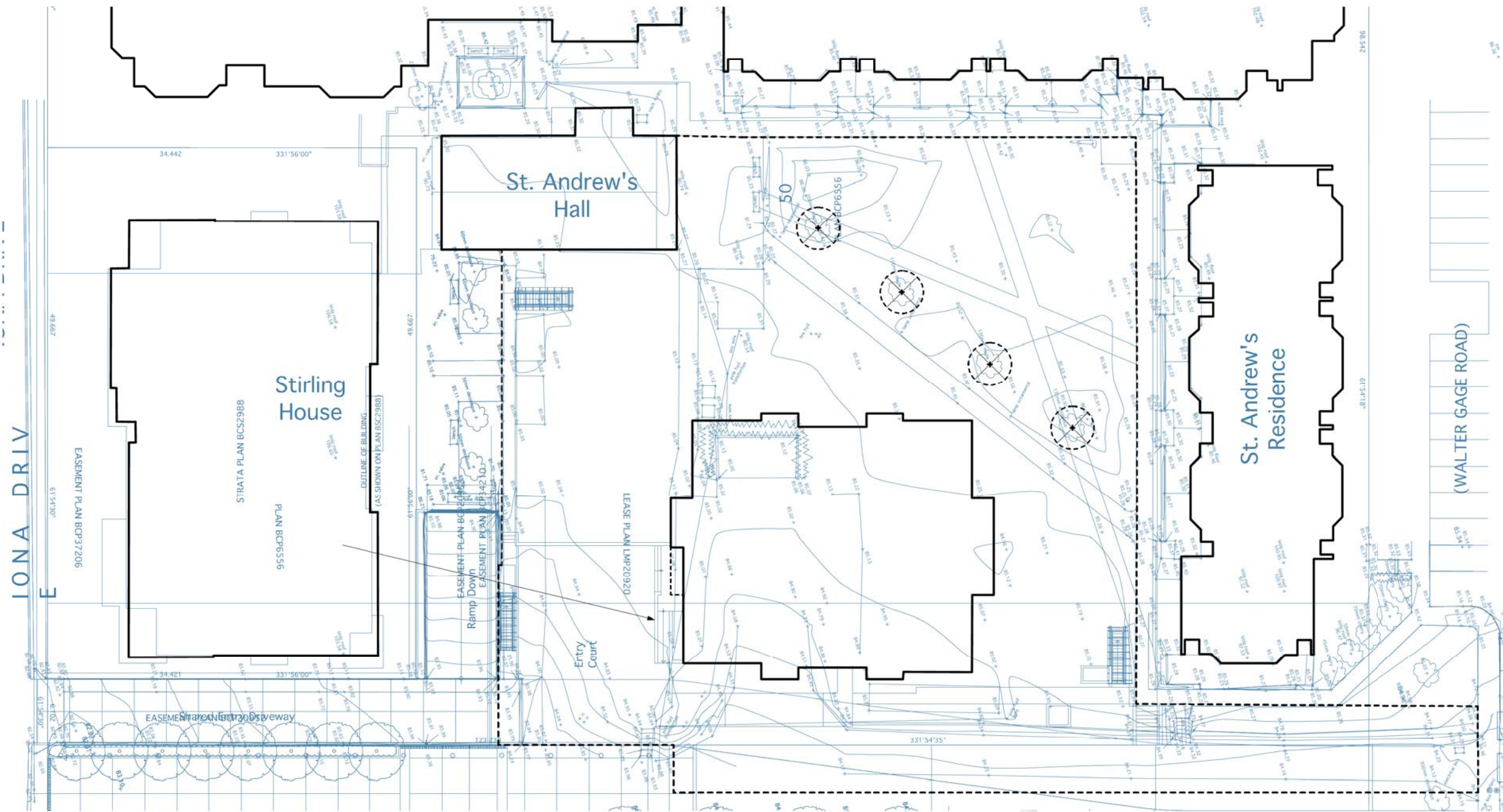





REVISIONS AND ISSUES		
NO.	DATE	DESCRIPTION
	2011/05/13	ISSUED FOR DP
	2011/07/05	SUBMITTED TO DP BOARD



**TREE MANAGEMENT LEGEND:**

-  TREE PROTECTION BARRIER FENCE - EXTENT AS PER PROJECT ARBOURIST RECOMMENDATION
-  TREES TO BE RETAINED
-  TREES TO BE REMOVED

**TREE PROTECTION NOTES**

**NOTES:**

- DO NOT REMOVE OR RELOCATE A RETAINED TREE OR REPLACEMENT TREE EXCEPT IN COMPLIANCE WITH A TREE PLAN.
- DO NOT REMOVE A TREE WITHOUT FIRST OBTAINING A TREE PERMIT.
- DO NOT LIGHT A FIRE WITHIN THE DRIPLINE OF A TREE, A RETAINED TREE OR A REPLACEMENT TREE.
- DO NOT REMOVE BARK FROM A TREE, A RETAINED TREE OR A REPLACEMENT TREE.
- DO NOT CAUSE ANY OTHER DAMAGE TO A TREE, A RETAINED TREE OR A REPLACEMENT TREE.
- NO PERSON SHALL ALTER THE EXISTING GRADE AROUND A RETAINED TREE EXCEPT THAT A PERSON MAY RAISE THE GRADE BY NO MORE THAN 5 CM (2") WITHIN 1 M, (3'-0") OF THE TRUNK AND BY NO MORE THAN 10 CM (4"), FROM THAT POINT OUT TO THE DRIPLINE OF THE TREE.

**TREE HAZARD MITIGATION:**

- MITIGATE HAZARDS FROM IDENTIFIED HAZARDOUS TREES (SEE ARBOURIST REPORT) PRIOR TO ANY WORK ACTIVITY ON SITE. THE MITIGATION IS TO BE COMPLETED BY AN EXPERIENCED ISA CERTIFIED ARBOURIST. THE WORK SHOULD BE DONE CAREFULLY TO PREVENT DAMAGE TO THE TREES TO BE PROTECTED.

**TREE PROTECTION ZONE:**

- SEE PLAN FOR LOCATION AND EXTENT OF TREE PROTECTION ZONES.
- ALL RETAINED TREES AND ALL REPLACEMENT TREES MUST BE PROTECTED BY A TREE PROTECTION BARRIER CONSTRUCTED, LOCATED AND MAINTAINED IN ACCORDANCE WITH SCHEDULE A.
- NO PERSON SHALL COMMENCE CONSTRUCTION UNLESS AND UNTIL THE TREE PROTECTION BARRIER HAS BEEN INSTALLED IN COMPLIANCE WITH SCHEDULE A.

(cont.)

- NO SOIL DISTURBANCE OR STRIPPING IS PERMITTED IN THIS ZONE. THE NATURAL GRADE SHOULD BE MAINTAINED.
- ANY TREE WHICH IS LOCATED WITHIN 2 M (6'-0") OF A DEVELOPMENT SITE OR AN A STREET OR LANE AND ADJACENT TO A DEVELOPMENT SITE SHALL BE PROTECTED BY A TREE PROTECTION BARRIER ON THE SITE IN ACCORDANCE WITH SCHEDULE A, EXCEPT THAT THE TREE PROTECTION BARRIER NEED NOT EXTEND INTO THE REQUIRED SIDEYARD OF THE SITE BY THE LESSER OF 50% OF THE DISTANCE BETWEEN THE BUILDING ENVELOPMENT AND THE PROPERTY LINE, OR 1 M (3'-0").
- TREE PROTECTION BARRIERS MUST BE AT LEAST 1.2M IN HEIGHT AND CONSTRUCTED OF EITHER SNOW FENCING SECURELY FASTENED TO METAL STAKES SPACED NO FURTHER THAN 1M APART, PLYWOOD NAILED TO WOOD STAKES, OR ANOTHER FORM OF BARRIER SATISFACTORY TO THE CITY BUILDING INSPECTOR OR, WHERE THE BARRIER IS ALL OR PARTIALLY LOCATED ON A STREET OR LANE ALLOWNACE, THE CITY ENGINEER.
- AFTER TREE PROTECTION BARRIERS HAVE BEEN INSTALLED, THEY MUST BE REVIEWED BY PROJECT ARBOURIST.
- INFORM PROJECT ARBOURIST WHEN TREE PROTECTION BARRIER FENCING CAN BE REVIEWED, PRIOR TO ANY CONSTRUCTION ON SITE.
- DO NOT STORE OR DUMP ANY MATERIALS OR EQUIPMENT WITHIN OR AGAINST THE TREE PROTECTION BARRIER. DO NOT ALLOW PARKING WITHIN THE TREE PROTECTION BARRIER.
- ANY PLANNED EXCAVATION WITHIN THE TREE PROTECTION ZONE SHOULD BE SUPERVISED BY THE CONSULTING ARBOURIST. ANY CONSTRUCTION ACTIVITIES PLANNED WITHIN THE TREE PROTECTION ZONES MUST BE REVIEWED AND SUPERVISED BY THE CONSULTING ARBOURIST.

**TREE RETENTION CARE DURING CONSTRUCTION:**

- TREES WITHIN THE TREE PROTECTION BARRIER MUST BE ADEQUATELY CARED FOR THROUGHOUT THE CONSTRUCTION PROCESS. THEY MUST BE WATERED ADEQUATELY TO ENSURE THAT THE FULL ROOT AREAS DO NOT EVER DRY OUT. ROOTS ENCOUNTERED IMMEDIATELY ADJACENT TO THE LOCATION OF NEW CONSTRUCTION AND ARE TOO DIFFICULT TO RELOCATE SHALL BE CUT 15 CM (6") BACK FROM NEW CONSTRUCTION. USE CLEAN, SHARP TREE PRUNING SAWS AND TOOLS.

PROJECT  
**St. Andrew's at UBC**

DRAWING TITLE  
**Tree Management Plan**

Copyright: All rights reserved. Reproduction in whole or in part is prohibited. This drawing is an electronic file and is the property of the Consultant and may not be used in any way without the written permission of the Consultant.

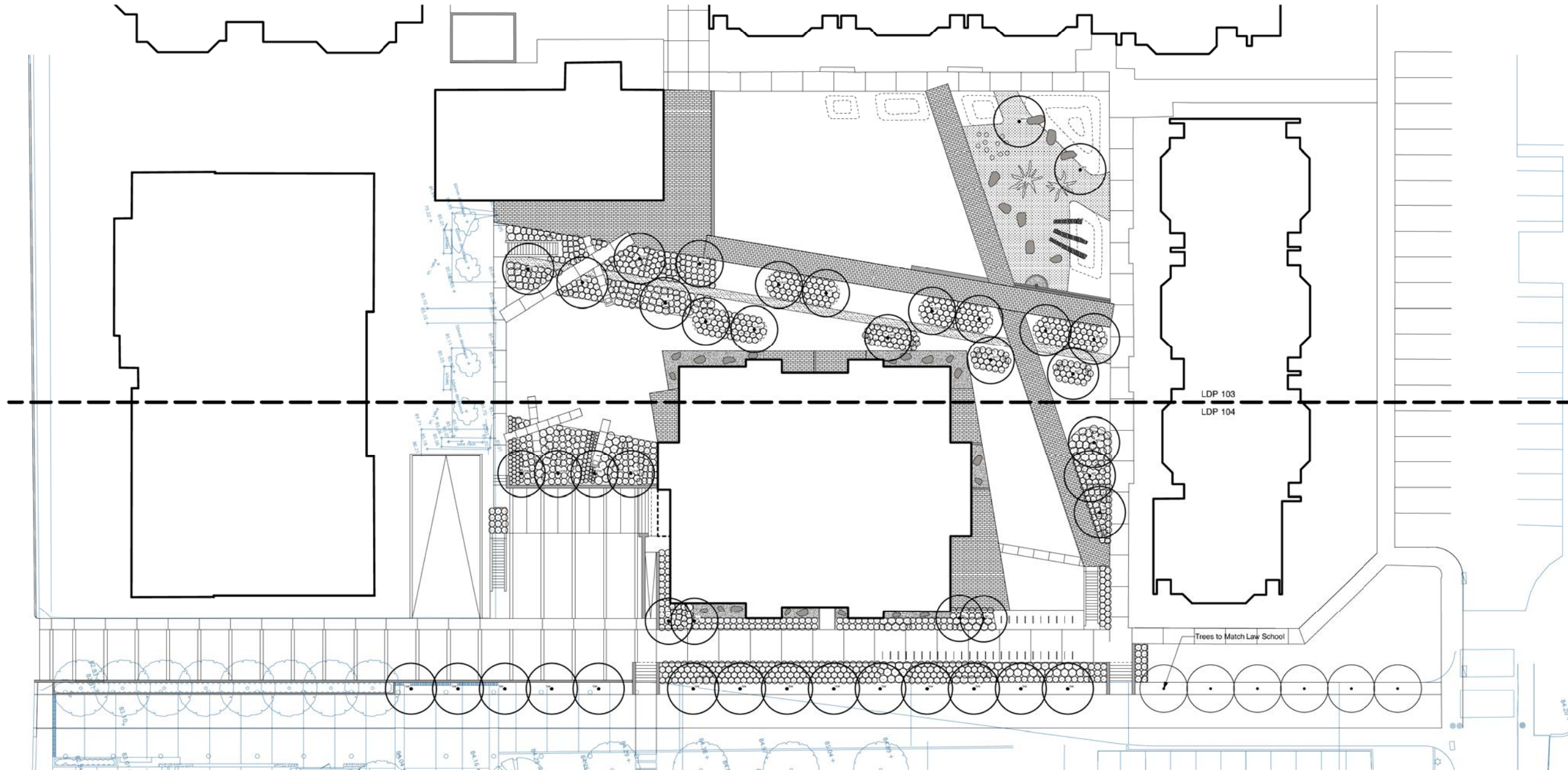


PROJECT NO.	10100
DATE	July 5, 2011
FILE NAME	10100 DP Plan.vwx
PLOTTED	7/5/11 at 1:53:40 PM
DRAWN	KF
REVIEWED	BH

DRAWING  
**LDP 001**



REVISIONS AND ISSUES	
NO.	DESCRIPTION
2011/05/13	ISSUED FOR DP
2011/07/05	SUBMITTED TO DP BOARD



### Plant List

St. Andrew's at UBC

ID	Qty.	Botanical Name	Common Name	Min. Size	Spacing	Remarks
<b>Trees</b>						
apl	6	<i>Acer palmatum</i> 'Osakazuki'	Osakazuki Japanese Maple	6 cm cal. (2.75" cal.)	As Shown	B&B, Specimen and densely branched
aro	2	<i>Acer rubrum</i> 'October Glory'	October Glory Red Maple	7 cm cal. (2.75" cal.)	As Shown	B&B, Specimen and densely branched
cja	4	<i>Cercidiphyllum japonicum</i>	Japanese judas tree	7 cm cal. (2.75" cal.)	As Shown	B&B, Specimen and densely branched
cko	9	<i>Cornus kousa</i>	Kousa Dogwood	6 cm cal. (2.5" cal.)	As Shown	B&B, Well branched, dense tree
cnw	4	<i>Cornus nuttallii</i> 'Eddie's White Wonder'	Eddie's White Wonder Dogwood	5 cm cal. (2" cal.)	As Shown	B&B, Well branched, dense tree
lsw	14	<i>Liquidambar styraciflua</i> 'Worplesdon'	Sweet Gum	7 cm cal. (2.75" cal.)	As Shown	B&B, Specimen and densely branched
sjc	4	<i>Styrax japonica</i>	Japanese Snowbell	6 cm cal. (2.5" cal.)	As Shown	B&B, Uniform branching, dense tree, 6' (1.8 m) std.
<b>Shrubs</b>						
bvr	60	<i>Berberis verruculosa</i>	Warty Barberry	#3 pot	60 cm (24")	
cc	32	<i>Ceanothus concha</i>	California Mountain Lilac	#3 pot	60 cm (24")	
csk	108	<i>Cornus sericea</i> 'Kelseyii'	Kelseyii Dogwood	#2 pot	60 cm (24")	Nursery grown
icc	110	<i>Ilex crenata</i> 'Convexa'	Japanese Holly	#3 pot	60 cm (24")	
klm	97	<i>Kalmia latifolia</i> 'Minuet'	Minuet Mountain Laurel	#3 pot	75 cm (30")	
mnr	70	<i>Mahonia nervosa</i>	Cascade Barberry	#2 pot	45 cm (18")	Nursery grown
pmu	26	<i>Polystichum munitum</i>	Western Sword Fern	#1 pot	30 cm (12")	
rbf	42	<i>Rhododendron</i> 'Bow Bells'	Dwarf Rhododendron	#3 pot	60 cm (24")	
rcw	57	<i>Rhododendron</i> 'Cunningham White'	Cunningham's White Rhododendron	#3 pot	60 cm (24")	
rmp	60	<i>Rosa</i> 'Meidiland Pink'	Meidiland Pink Rose	#2 pot	60 cm (24")	
rrb	68	<i>Rosa rubrifolia</i>	Redleaf Rose	#3 pot	75 cm (30")	Nursery grown
srs	189	<i>Sarcococca nuscifolia</i>	Fragrant Sarcococca	#3 pot	60 cm (24")	
sjp	175	<i>Skimmia japonica</i>	Japanese Skimmia	#3 pot	60 cm (24")	
sba	171	<i>Spiraea bumalda</i> 'Anthony Waterer'	Anthony Waterer Spiraea	#3 pot	60 cm (24")	
vot	58	<i>Vaccinium ovatum</i> 'Thunderbird'	Thunderbird Evergreen Huckleberry	#3 Pot	75 cm (30")	
<b>Perennials, Ferns and Ornamental Grasses</b>						
dcs	395	<i>Deschampsia caespitosa</i>	Tufted Hair Grass	#1 pot	30 cm (12")	Well Established
pah	78	<i>Pennisetum alopecuroides</i> 'Hamelii'	Dwarf Fountain Grass	#1 pot	30 cm (12")	Well Established

PROJECT  
**St. Andrew's at UBC**

DRAWING TITLE  
**Planting Plan**

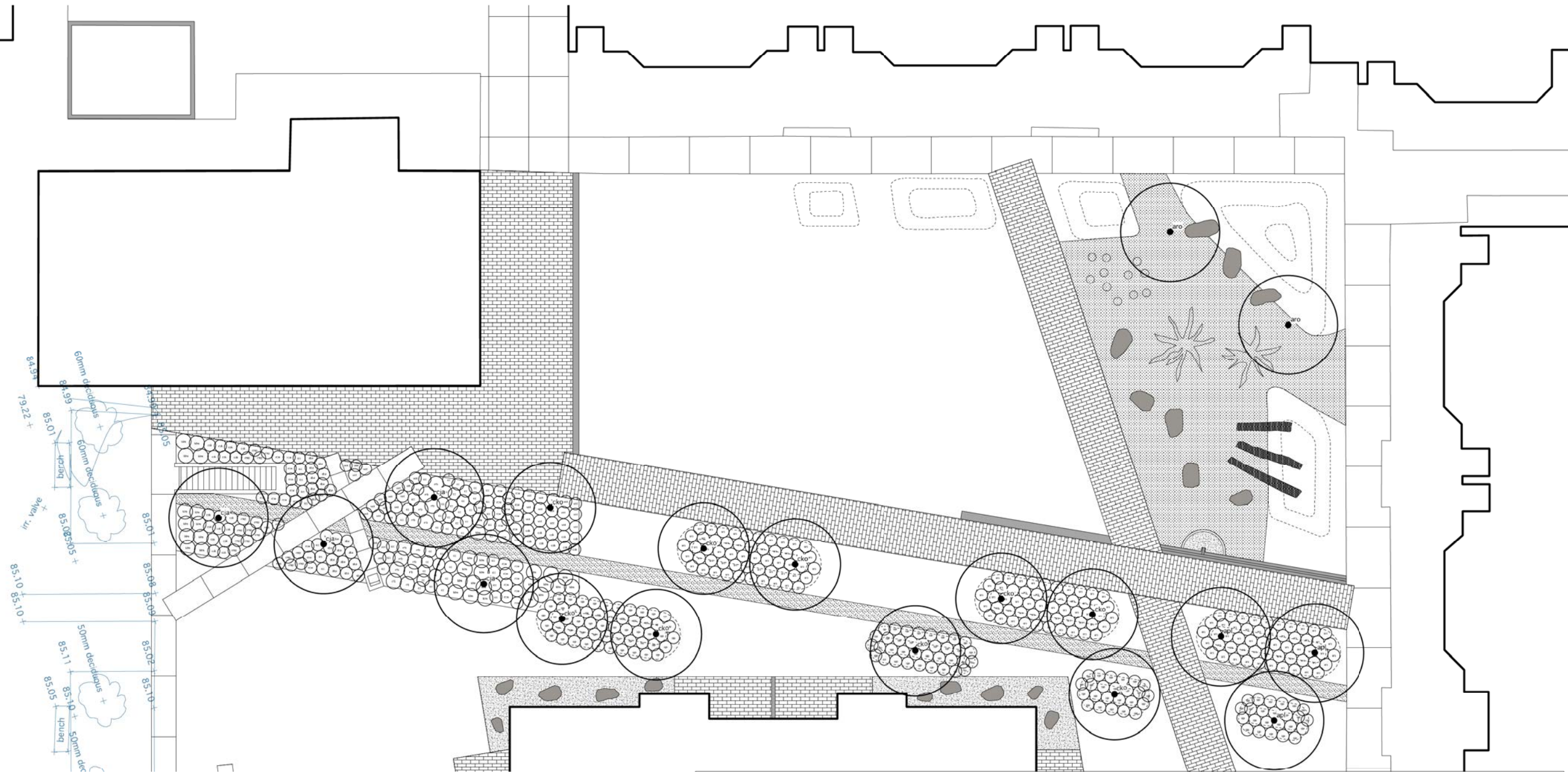
Copyright: All rights reserved. Reproduction in whole or in part is prohibited. This drawing is an intellectual property of the Consultant and may not be used in any way without the written permission of the Consultant.



PROJECT NO.	10100
DATE	July 5, 2011
FILE NAME	10100 DP Plan.vwx
PRINTED	7/5/11 at 1:59:08 PM
DRAWN	KF
REVIEWED	BH

DRAWING  
**LDP 102**

REVISIONS AND ISSUES	
NO.	DESCRIPTION
2011/05/13	ISSUED FOR DP
2011/07/05	SUBMITTED TO DP BOARD



### Plant List

St. Andrew's at UBC

ID	Qty.	Botanical Name	Common Name	Min. Size	Spacing	Remarks
<b>Trees</b>						
apl	6	Acer palmatum 'Osakazuki'	Osakazuki Japanese Maple	6 cm cal. (2.75" cal.)	As Shown	B&B, Specimen and densely branched
aro	2	Acer rubrum 'October Glory'	October Glory Red Maple	7 cm cal. (2.75" cal.)	As Shown	B&B, Specimen and densely branched
cja	4	Cercidiphyllum japonicum	Japanese judas tree	7 cm cal. (2.75" cal.)	As Shown	B&B, Specimen and densely branched
cko	9	Cornus kousa	Kousa Dogwood	6 cm cal. (2.5" cal.)	As Shown	B&B, Well branched, dense tree
cnw	4	Cornus nuttallii 'Eddie's White Wonder'	Eddie's White Wonder Dogwood	5 cm cal. (2" cal.)	As Shown	B&B, Well branched, dense tree
lsw	14	Liquidambar styraciflua 'Worplesdon'	Sweet Gum	7 cm cal. (2.75" cal.)	As Shown	B&B, Specimen and densely branched
sjc	4	Styrax japonica	Japanese Snowbell	6 cm cal. (2.5" cal.)	As Shown	B&B, Uniform branching, dense tree, 6' (1.8 m) std.
<b>Shrubs</b>						
bvr	60	Berberis verruculosa	Warty Barberry	#3 pot	60 cm (24")	
cc	32	Ceanothus concha	California Mountain Lilac	#3 pot	60 cm (24")	
csk	108	Cornus sericea 'Kelseyii'	Kelseyii Dogwood	#2 pot	60 cm (24")	Nursery grown
icc	110	Ilex crenata 'Convexa'	Japanese Holly	#3 pot	60 cm (24")	
klm	97	Kalmia latifolia 'Minuet'	Minuet Mountain Laurel	#3 pot	75 cm (30")	
mnr	70	Mahonia nervosa	Cascade Barberry	#2 pot	45 cm (18")	Nursery grown
pmu	26	Polystichum munitum	Western Sword Fern	#1 pot	30 cm (12")	
rbf	42	Rhododendron 'Bow Bells'	Dwarf Rhododendron	#3 pot	60 cm (24")	
rcw	57	Rhododendron 'Cunningham White'	Cunningham's White Rhododendron	#3 pot	60 cm (24")	
rmp	60	Rosa 'Meidiland Pink'	Meidiland Pink Rose	#2 pot	60 cm (24")	
rrb	68	Rosa rubrifolia	Redleaf Rose	#3 pot	75 cm (30")	Nursery grown
srs	189	Sarcococca nuscifolia	Fragrant Sarcococca	#3 pot	60 cm (24")	
sjp	175	Skimmia japonica	Japanese Skimmia	#3 pot	60 cm (24")	
sba	171	Spiraea bumalda 'Anthony Waterer'	Anthony Waterer Spiraea	#3 pot	60 cm (24")	
vot	58	Vaccinium ovatum 'Thunderbird'	Thunderbird Evergreen Huckleberry	#3 Pot	75 cm (30")	
<b>Perennials, Ferns and Ornamental Grasses</b>						
dcs	395	Deschampsia caespitosa	Tufted Hair Grass	#1 pot	30 cm (12")	Well Established
pah	78	Pennisetum alopecuroides 'Hamelin'	Dwarf Fountain Grass	#1 pot	30 cm (12")	Well Established

PROJECT  
**St. Andrew's at UBC**

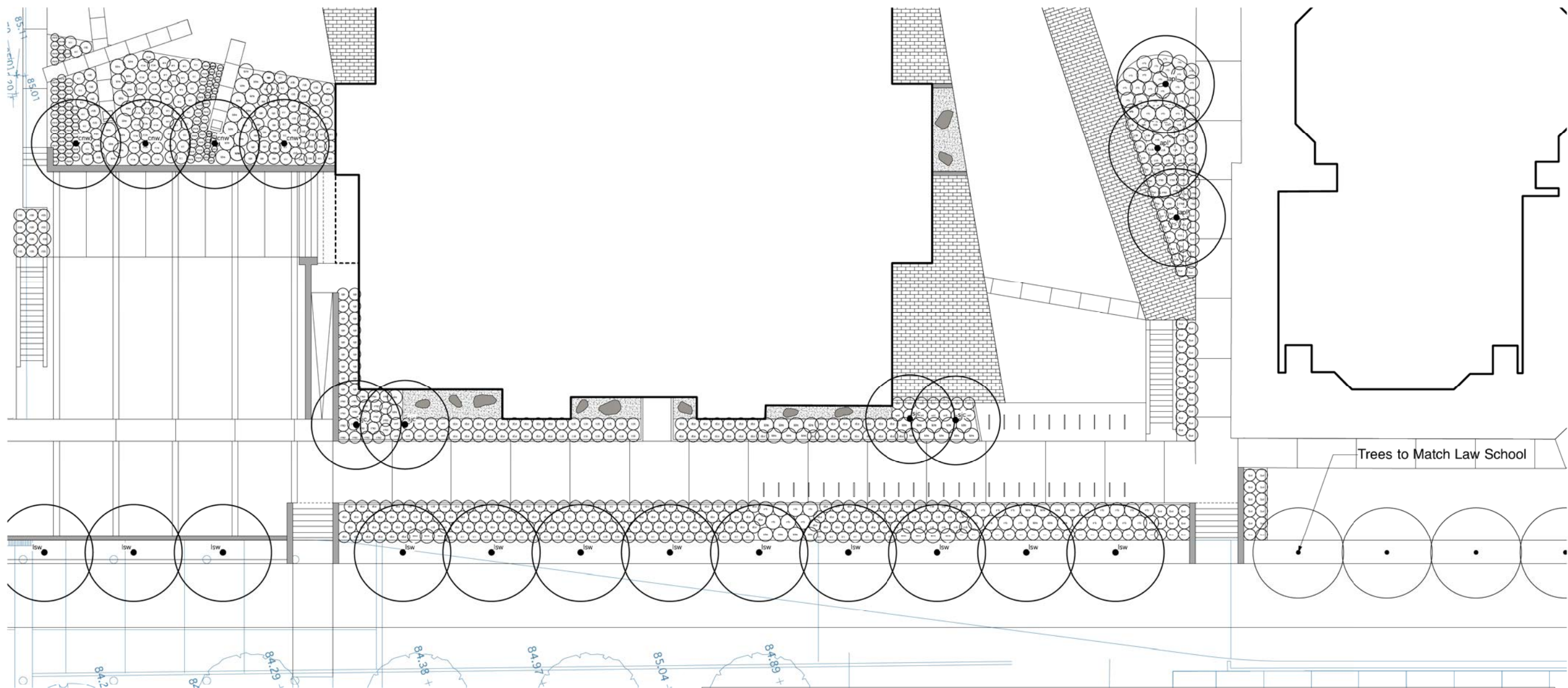
DRAWING TITLE  
**Planting Plan  
 Enlargement**

Copyright: All rights reserved. Reproduction in whole or in part is prohibited. This drawing is an  
 intellectual property of the Consultant and may not be used in any way without the  
 written permission of the Client.



PROJECT NO.	10100
DATE	July 5, 2011
FILE NAME	10100 DP Plan.vwx
PRINTED	7/5/11 at 1:59:42 PM
DRAWN	KF
REVIEWED	BH

DRAWING  
**LDP 103**



REVISIONS AND ISSUES

NO.	DATE	DESCRIPTION
1	2011/05/13	ISSUED FOR DP
2	2011/07/05	SUBMITTED TO DP BOARD

### Plant List

St. Andrew's at UBC

ID	Qty.	Botanical Name	Common Name	Min. Size	Spacing	Remarks
<b>Trees</b>						
apl	6	Acer palmatum 'Osakazuki'	Osakazuki Japanese Maple	6 cm cal. (2.75" cal.)	As Shown	B&B, Specimen and densely branched
aro	2	Acer rubrum 'October Glory'	October Glory Red Maple	7 cm cal. (2.75" cal.)	As Shown	B&B, Specimen and densely branched
cja	4	Cercidiphyllum japonicum	Japanese judas tree	7 cm cal. (2.75" cal.)	As Shown	B&B, Specimen and densely branched
cko	9	Cornus kousa	Kousa Dogwood	6 cm cal. (2.5" cal.)	As Shown	B&B, Well branched, dense tree
cnw	4	Cornus nuttallii 'Eddie's White Wonder'	Eddie's White Wonder Dogwood	5 cm cal. (2" cal.)	As Shown	B&B, Well branched, dense tree
lsw	14	Liquidambar styraciflua 'Worplesdon'	Sweet Gum	7 cm cal. (2.75" cal.)	As Shown	B&B, Specimen and densely branched
sjc	4	Styrax japonica	Japanese Snowbell	6 cm cal. (2.5" cal.)	As Shown	B&B, Uniform branching, dense tree, 6' (1.8 m) std.
<b>Shrubs</b>						
bvr	60	Berberis verruculosa	Warty Barberry	#3 pot	60 cm (24")	
cc	32	Ceanothus concha	California Mountain Lilac	#3 pot	60 cm (24")	
csk	108	Cornus sericea 'Kelseyii'	Kelseyii Dogwood	#2 pot	60 cm (24")	Nursery grown
icc	110	Ilex crenata 'Convexa'	Japanese Holly	#3 pot	60 cm (24")	
klm	97	Kalmia latifolia 'Minuet'	Minuet Mountain Laurel	#3 pot	75 cm (30")	
mnr	70	Mahonia nervosa	Cascade Barberry	#2 pot	45 cm (18")	Nursery grown
pmu	26	Polystichum munitum	Western Sword Fern	#1 pot	30 cm (12")	
rbf	42	Rhododendron 'Bow Bells'	Dwarf Rhododendron	#3 pot	60 cm (24")	
rcw	57	Rhododendron 'Cunningham White'	Cunningham's White Rhododendron	#3 pot	60 cm (24")	
rmp	60	Rosa 'Meidiland Pink'	Meidiland Pink Rose	#2 pot	60 cm (24")	
rrb	68	Rosa rubrifolia	Redleaf Rose	#3 pot	75 cm (30")	Nursery grown
srs	189	Sarcococca nuscifolia	Fragrant Sarcococca	#3 pot	60 cm (24")	
sjp	175	Skimmia japonica	Japanese Skimmia	#3 pot	60 cm (24")	
sba	171	Spiraea bumalda 'Anthony Waterer'	Anthony Waterer Spiraea	#3 pot	60 cm (24")	
vot	58	Vaccinium ovatum 'Thunderbird'	Thunderbird Evergreen Huckleberry	#3 Pot	75 cm (30")	
<b>Perennials, Ferns and Ornamental Grasses</b>						
dcs	395	Deschampsia caespitosa	Tufted Hair Grass	#1 pot	30 cm (12")	Well Established
pah	78	Pennisetum alopecuroides 'Hamelin'	Dwarf Fountain Grass	#1 pot	30 cm (12")	Well Established

PROJECT  
**St. Andrew's at UBC**

DRAWING TITLE  
**Planting Plan  
 Enlargement**

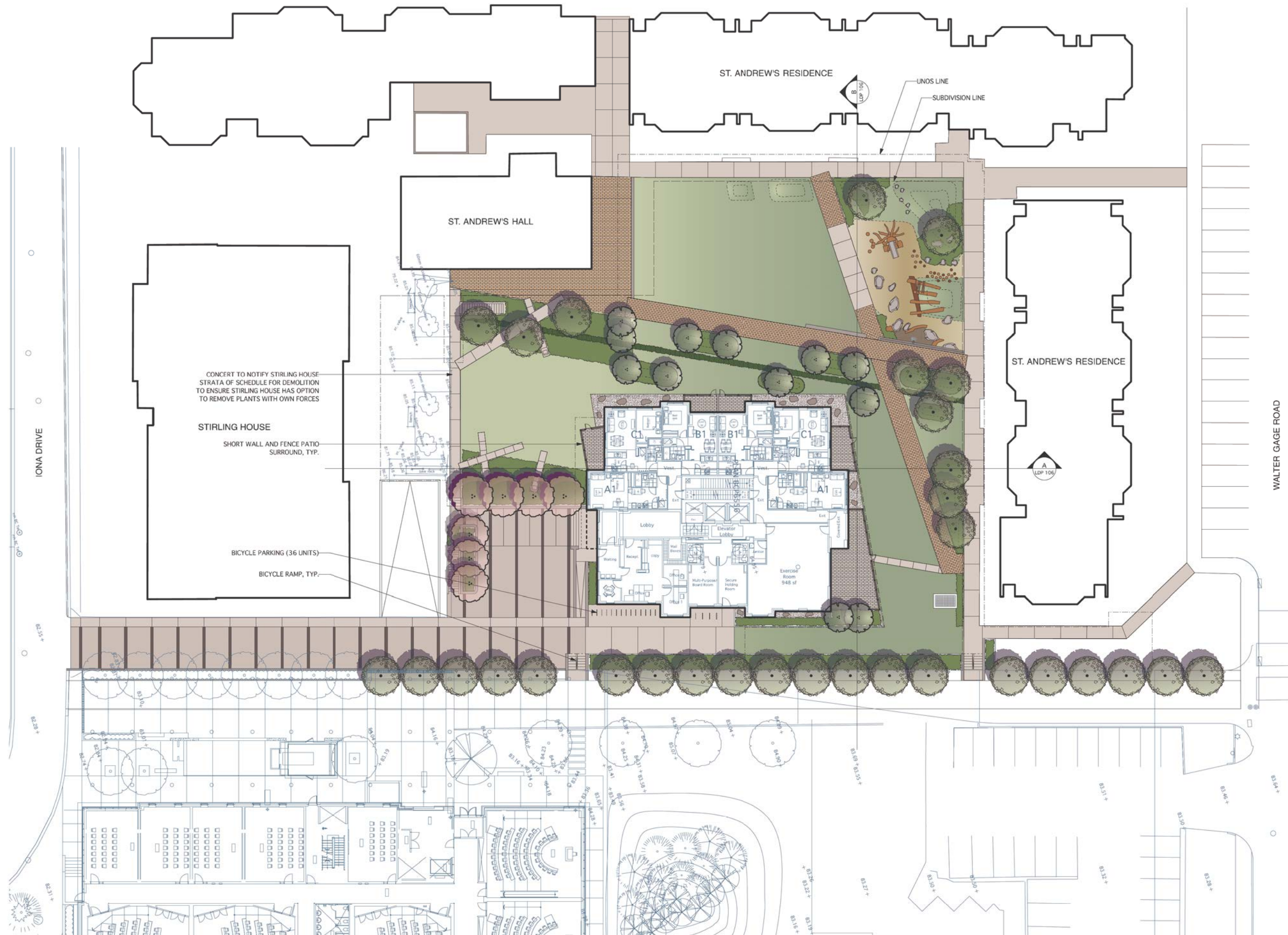
Copyright: All rights reserved. Reproduction in whole or in part is prohibited. This drawing is an  
 indication of intent and is not a contract. It may not be used in any way without the  
 written permission of the architect.



PROJECT NO.	10100
DATE	July 5, 2011
FILE NAME	10100 DP Plan.vwx
PRINTED	7/5/11 at 2:00:11 PM
DRAWN	KF
REVIEWED	BH

DRAWING  
**LDP 104**

REVISIONS AND ISSUES		
NO.	DATE	DESCRIPTION
	2011/05/13	ISSUED FOR DP
	2011/07/05	SUBMITTED TO DP BOARD
	2011/09/02	RESUBMITTED TO DP BOARD



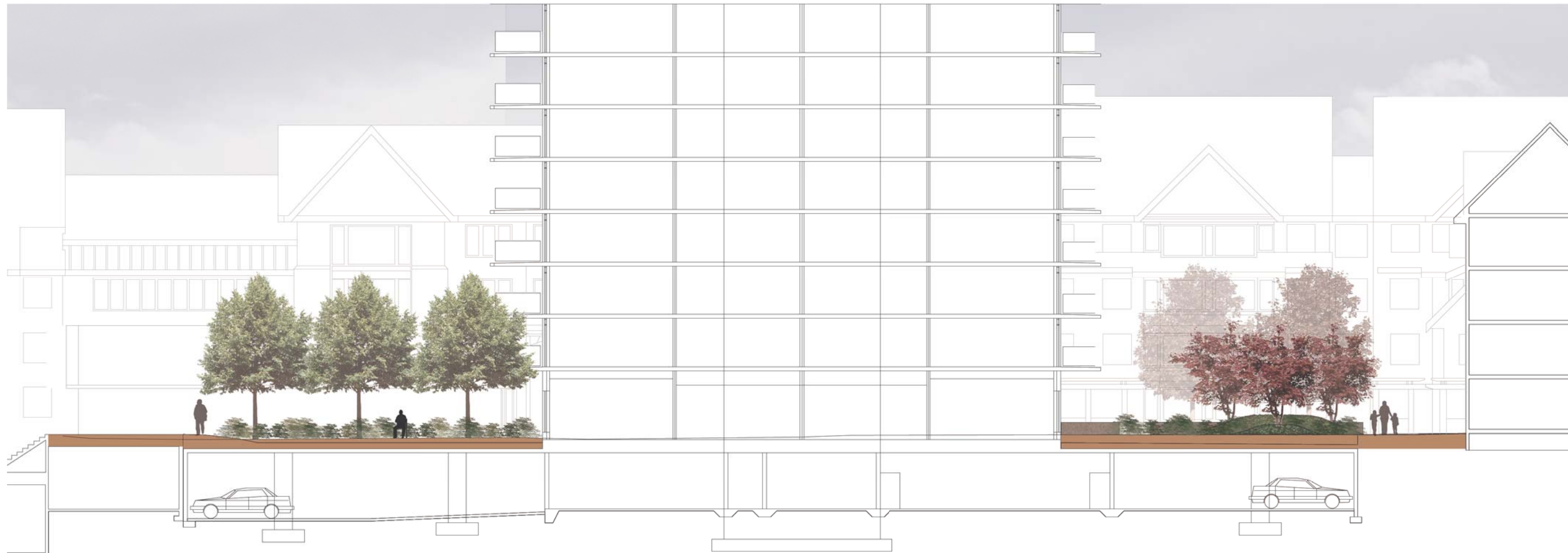
PROJECT  
**St. Andrew's at UBC**

DRAWING TITLE  
**Landscape Plan**



PROJECT NO.	10100
DATE	September 2, 2011
FILE NAME	10100 DP Plan.vwx
PLOTTED	9/2/11 at 1:09:35 PM
DRAWN	KF
REVIEWED	BH

DRAWING  
**LDP 105**



SECTION A



SECTION B

REVISIONS AND ISSUES

NO.	DATE	DESCRIPTION
1	2011/05/13	ISSUED FOR DP
2	2011/07/05	SUBMITTED TO DP BOARD
3	2011/09/02	RESUBMITTED TO DP BOARD

PROJECT  
**St. Andrew's at UBC**

DRAWING TITLE  
**Sections**

ORIENT  
 NORTH

SCALE  
**1:100**

PROJECT NO. **10100**  
 DATE **September 2, 2011**  
 FILE NAME **10100 DP Sections.vwx**  
 PLOTTED **9/2/11 at 1:16:12 PM**  
 DRAWN **KF** REVIEWED **BH**

DRAWING  
**LDP 106**



REVISIONS AND ISSUES

NO.	DATE	DESCRIPTION
	2011/05/13	ISSUED FOR DP
	2011/07/05	SUBMITTED TO DP BOARD



PROJECT  
St. Andrew's at UBC

DRAWING TITLE  
Precedent Images

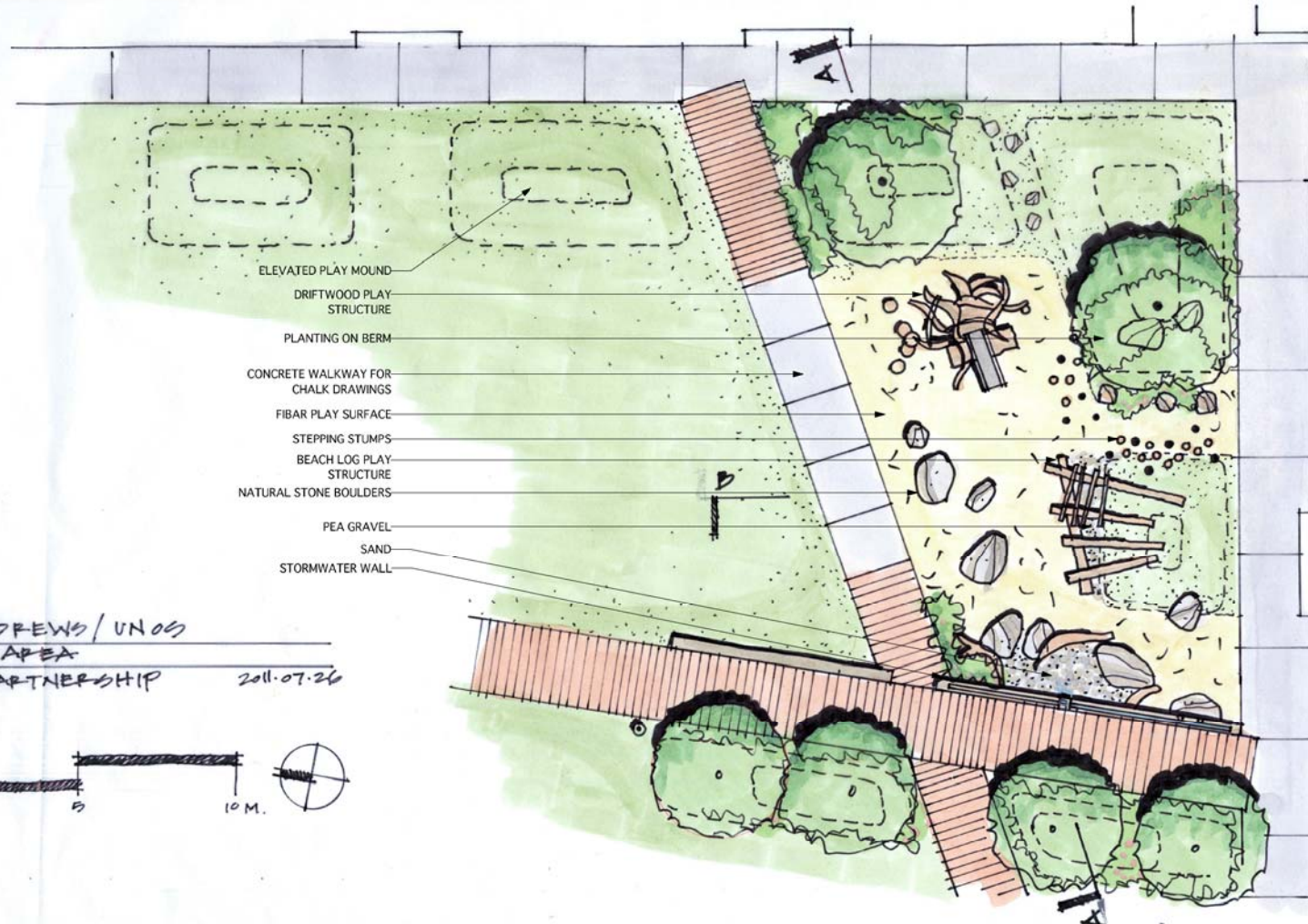
Copyright: All rights reserved. Reproduction in whole or in part is prohibited. This drawing is an  
artifact of a computer-aided design process and may not be used in any way without the  
written permission of the author.

NORTH SCALE

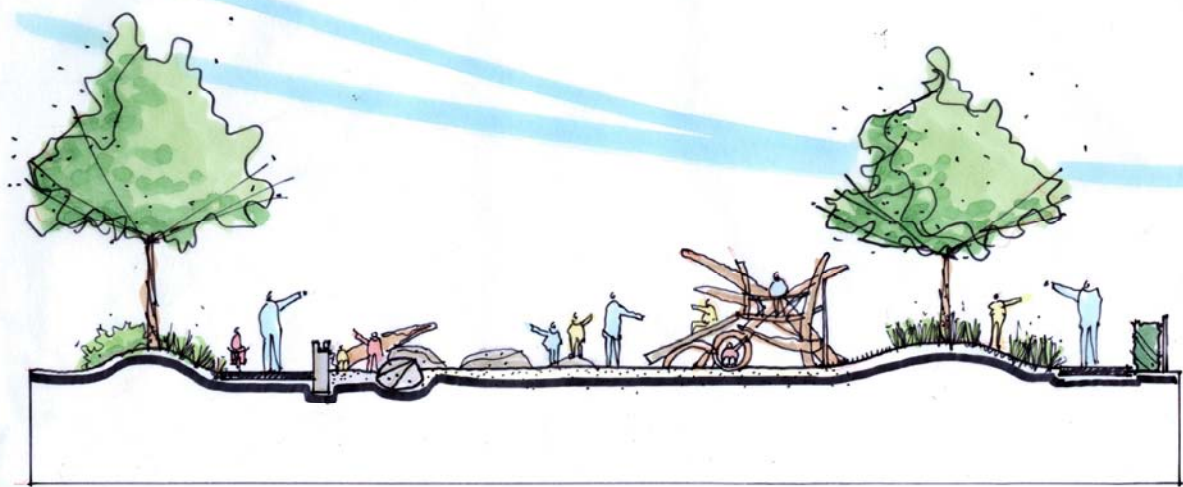
PROJECT NO.	10100
DATE	July 5, 2011
FILE NAME	10100 DP Plan.vwx
PRINTED	7/5/11 at 2:05:18 PM
DRAWN	KF
REVIEWED	BH

DRAWING  
LDP 107

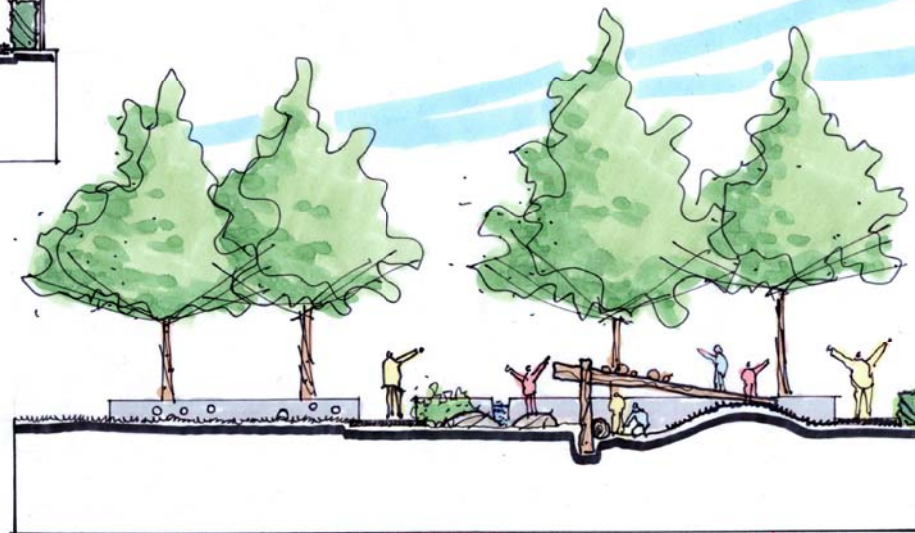




ST. ANDREWS / UNOS  
 PLAY AREA  
 PwL PARTNERSHIP 2011-07-26



SECTION A-A SCALE 1:100M.



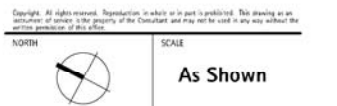
SECTION B-B SCALE 1:100M.



REVISIONS AND ISSUES	
NO.	DESCRIPTION
20110902	RESUBMITTED TO DP BOARD

PROJECT  
 St. Andrew's at UBC

DRAWING TITLE  
 Playground Concept



PROJECT NO.	10100
DATE	September 2, 2011
FILE NAME	10100 DP Plan.vwx
PRINTED	9/2/11 at 1:09:35 PM
DRAWN	KF
REVIEWED	BH

LDP 108