

plant schedule

Key	Qty	Botanical Name	Common Name	Planted Size	Comments	Key	Qty	Botanical Name	Common Name	Planted Size	Comments
Ap	1	Albizia julibrissin	Persian Silk Tree	6.0cm Cal., BBB	Multistemmed, Specimen	Rh	--	Rhododendron ssp.	Rhododendron Species	#5 pot	Full
Ac	50	Acer circinatum	Vine Maple	2.0m Ht., BBB	Uniform Size & Quality	Sv	--	Pteleobastus variegatus	Dwarf Whitestripe Bamboo	#2 pot	Full
CN	11	Cornus kousa 'Satomi'	Flowering Dogwood	5.0cm Cal., BBB	Uniform Size & Quality	Sk	--	Skimmia reevesiana	Reeve's Skimmia	#2 pot	Full
PT	1	Pinus thunbergii	Japanese Black Pine	2.5m Ht., W.B., Trained	Specimen Quality, Single Leader	Tm	--	Taxus x media 'Hicksii'	Hick's Yew	1.2m Ht., 36" o.c.	Full, Sheared
Py	14	Prunus serrulata 'Amanogawa'	Amanogawa Cherry	6.0cm Cal., BBB	Uniform Size and Quality	ik	--	Iris kaempferi	Japanese Iris	#1 pot, 450mm o.c.	Full
SJ	3	Sophora japonica	Pagoda Tree	7.0cm Cal., BBB	Specimen Quality	ms	--	Miscanthus sinensis 'Yakujima'	Maiden Grass	#1 pot, 450mm o.c.	Full
SJ	25	Styrax japonica	Japanese Snowbell	6.0cm Cal., BBB	Specimen Quality	ik	--	Pennesetum alopecuroides	Fountain Grass	#1 pot, 450mm o.c.	Full
AJ	--	Azalea japonica ssp.	Japanese Azalea	#3 pot	Full	pm	--	Polystichum munitum	Western Sword Fern	#1 pot, 450mm o.c.	Full
Bm	--	Buxus microphylla 'Winter Gem'	Asian Boxwood	#2 pot	Full, Sheared	sm	--	Sedum 'Matrona'	Stonecrop	#1 pot, 450mm o.c.	Full
Cs	--	Cornus sericea	Redosier Dogwood	#3 pot	Full	vm	--	Vinca minor	Periwinkle	#1 pot, 450mm o.c.	Full
En	--	Escallonia 'Newport Dwarf'	Escallonia	#3 pot	Full						
Gs	--	Gaultheria shallon	Salal	#1 pot	Full						

notes

- All Streetscape design is to be coordinated with UBC Properties Trust and Planning. This plan shows landscape proposed as part of streetscape development.
- Street trees by others, planted under supervision of UBC Properties Trust and Planning Department.
- All plant material to BCNTA and BCSLA standards.
- Area of search for plant material: Pacific Northwest, including British Columbia, Washington and Oregon.

2	Issued for DP	Jun.24/2010
1	Issued for PDP	May 5/2010

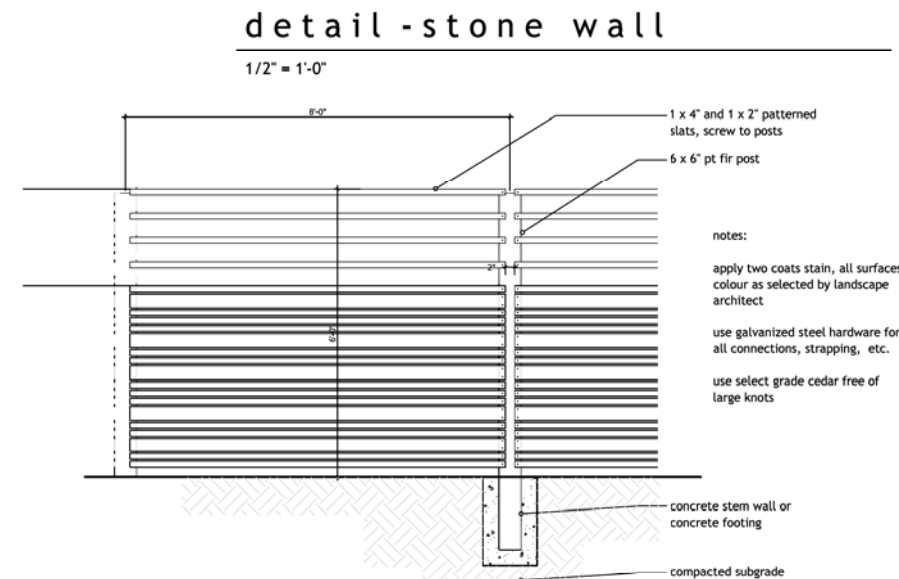
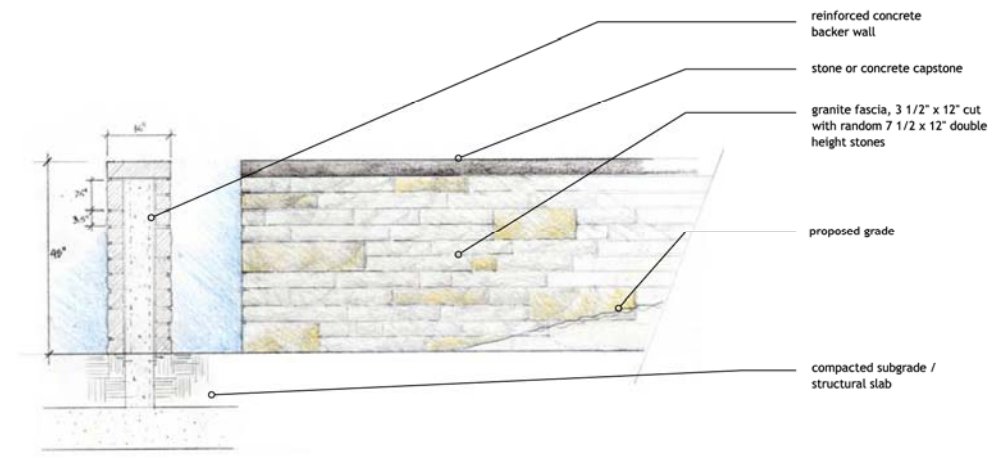
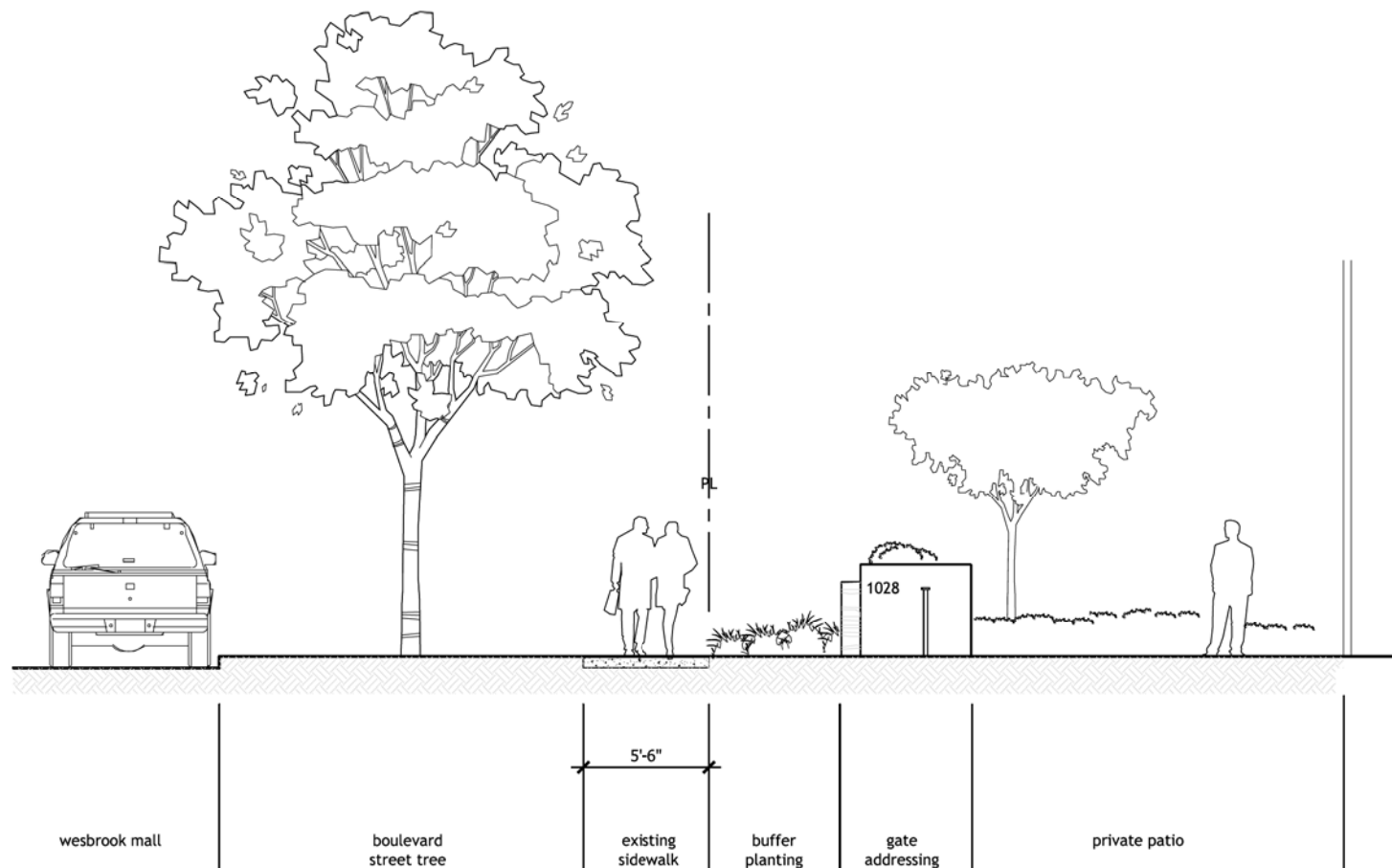
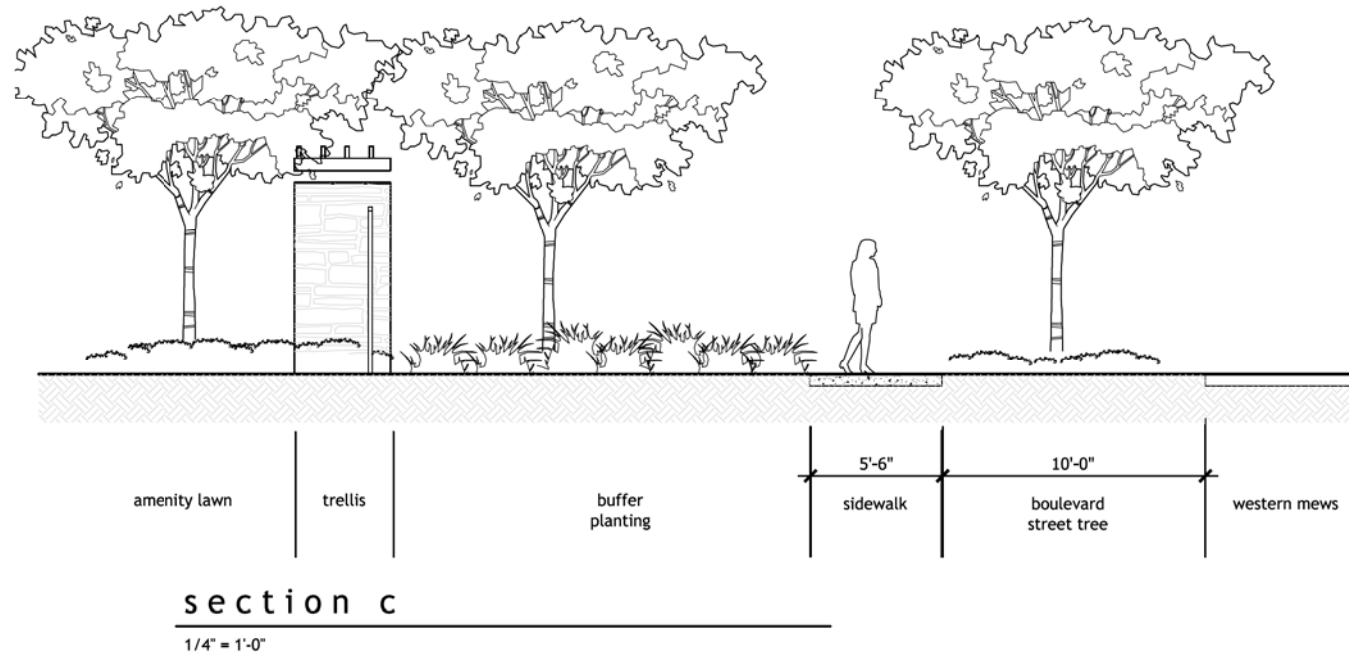
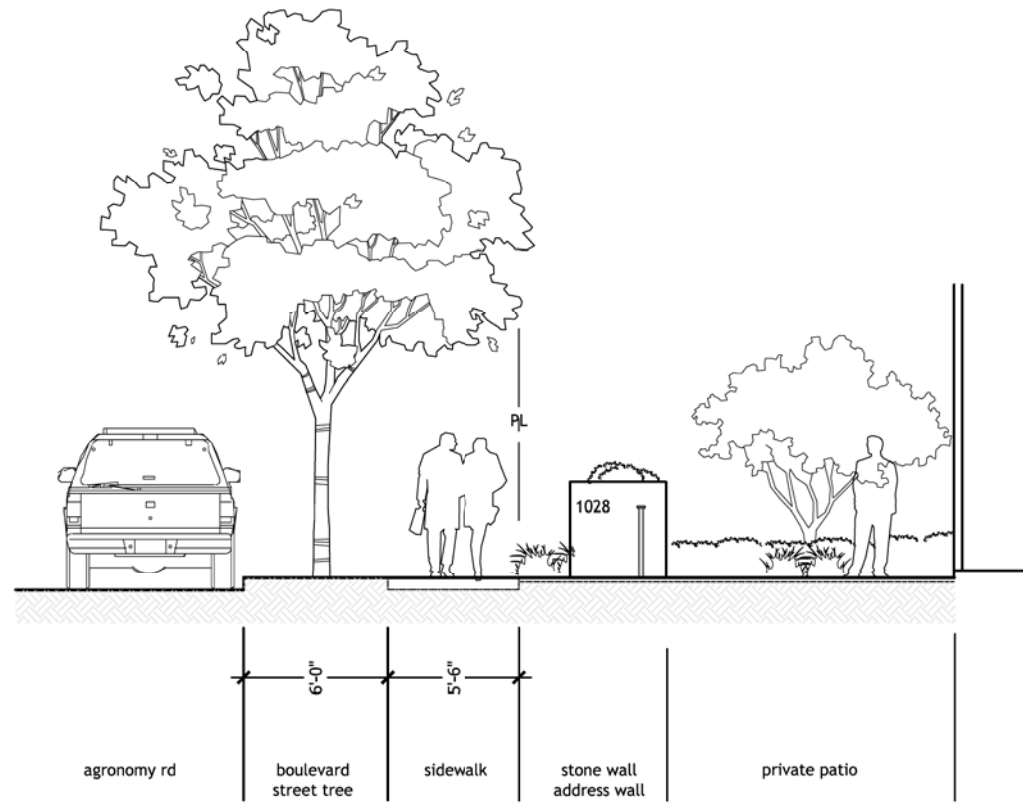
No.	Description	Date

Copyright Reserved. This drawing is and remains at all times the exclusive property of Hapa Collaborative and cannot be used modified or copied without the expressed written consent of the landscape architect.

**Westbrook
East UBC Campus**
University of British Columbia
Vancouver BC

**Landscape
Concept Plan**

Date	Apr.26/2010	Drawing Number	
Project No.	1005		
Scale	1/16" = 1'-0"		L1.1
Drawn/Checked	jf/JF		



2	Issued for DP	Jun.24/2010
1	Issued for PDP	May 5/2010

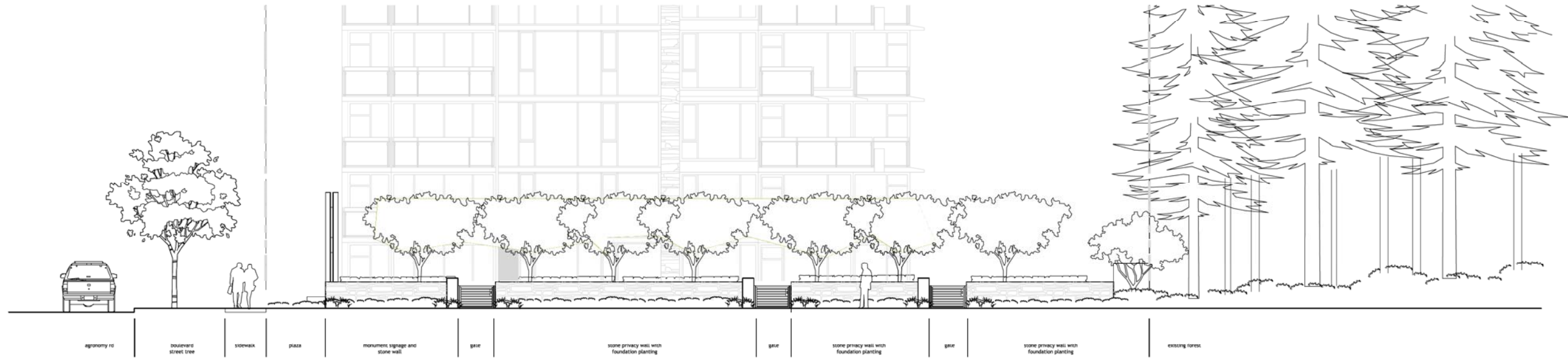
No.	Description	Date
-----	-------------	------

Copyright Reserved. This drawing is and remains at all times the exclusive property of Hapa Collaborative and cannot be used modified or copied without the expressed written consent of the landscape architect.

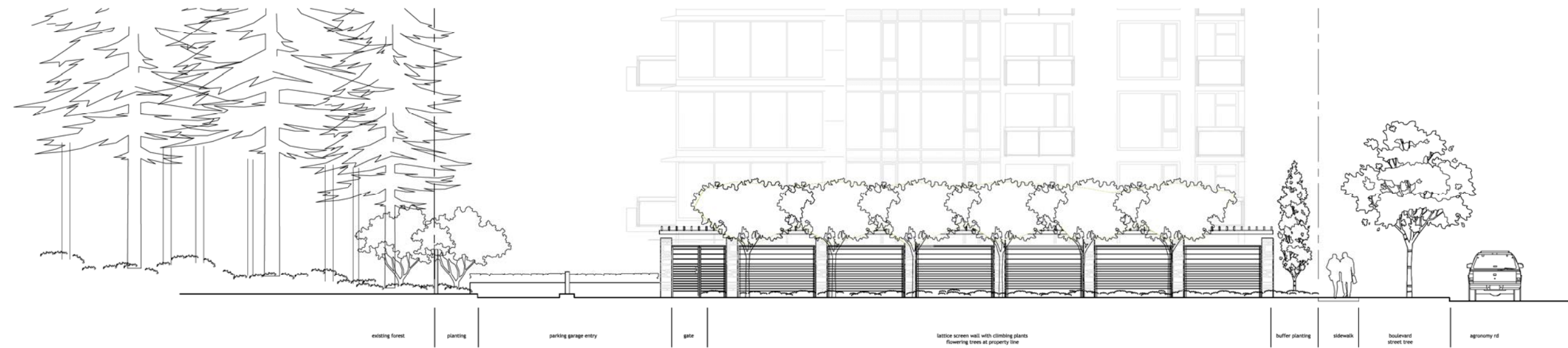
Wesbrook
East UBC Campus
University of British Columbia
Vancouver BC

Landscape
Sections

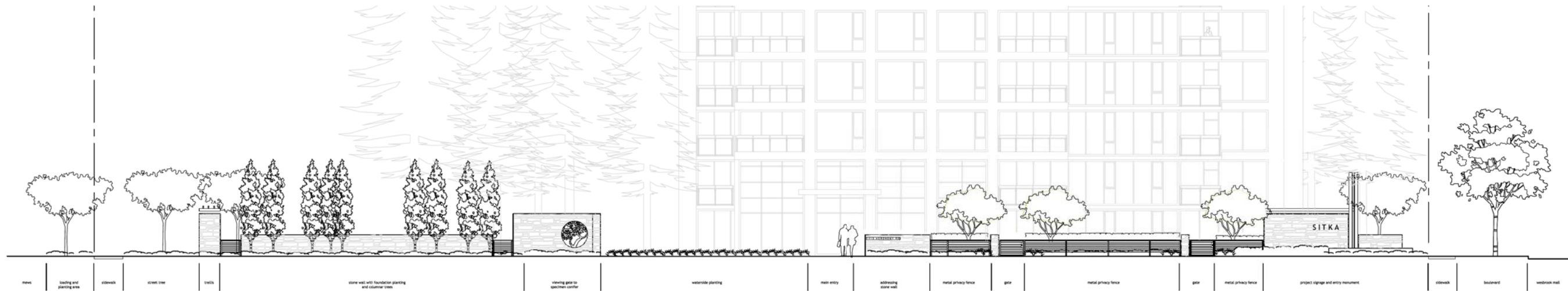
Date	Apr.26/2010	Drawing Number
Project No.	1005	L1.2
Scale	varies	
Drawn/Checked	jf/JF	



west elevation
1/8" = 1'-0"



east elevation
1/8" = 1'-0"



north elevation
3/16" = 1'-0"

2	Issued for DP	Jun.24/2010
1	Issued for PDP	May 5/2010

No.	Description	Date
-----	-------------	------

Copyright Reserved. This drawing is and remains at all times the exclusive property of Hapa Collaborative and cannot be used modified or copied without the expressed written consent of the landscape architect.

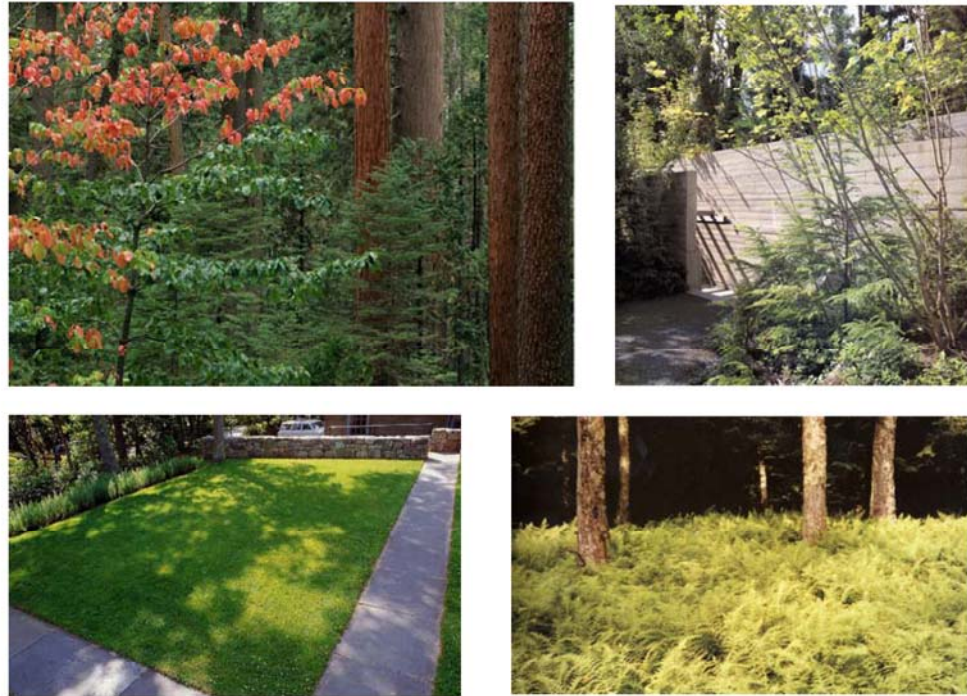
Wesbrook
East UBC Campus
University of British Columbia
Vancouver BC

Landscape
Elevations

Date	Apr.26/2010	Drawing Number
Project No.	1005	L1.3
Scale	varies	
Drawn/Checked	jf/JF	

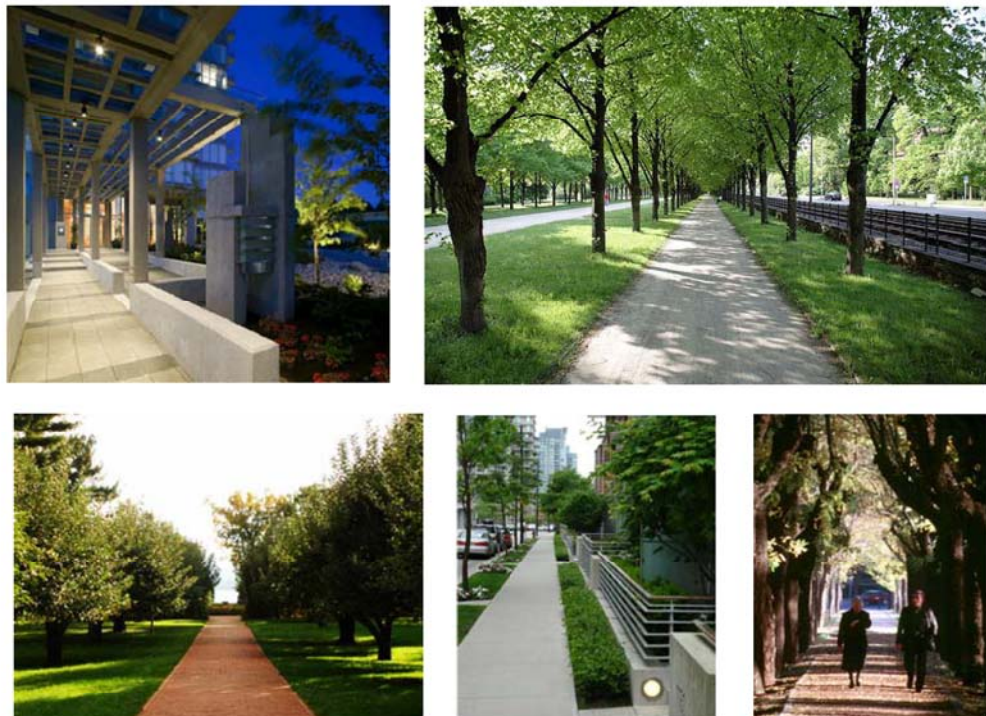
tower in a garden

- Emphasize landmark building height, contrast with surrounding mature cedar | fir forest
- Meet Wesbrook with large lawn area consistent in size and scale to adjacent properties
- Heighten contrast between woodland and urban street grid, formal planting



campus realm | wayfinding

- Provide pedestrian scaled walls, fences and planting at all street edges
- Create entry forecourt experience with low walls and gate, water, signage and paving
- Use UBC campus material palette in contemporary expression
- Integrate signage and public art as part of overall design expression



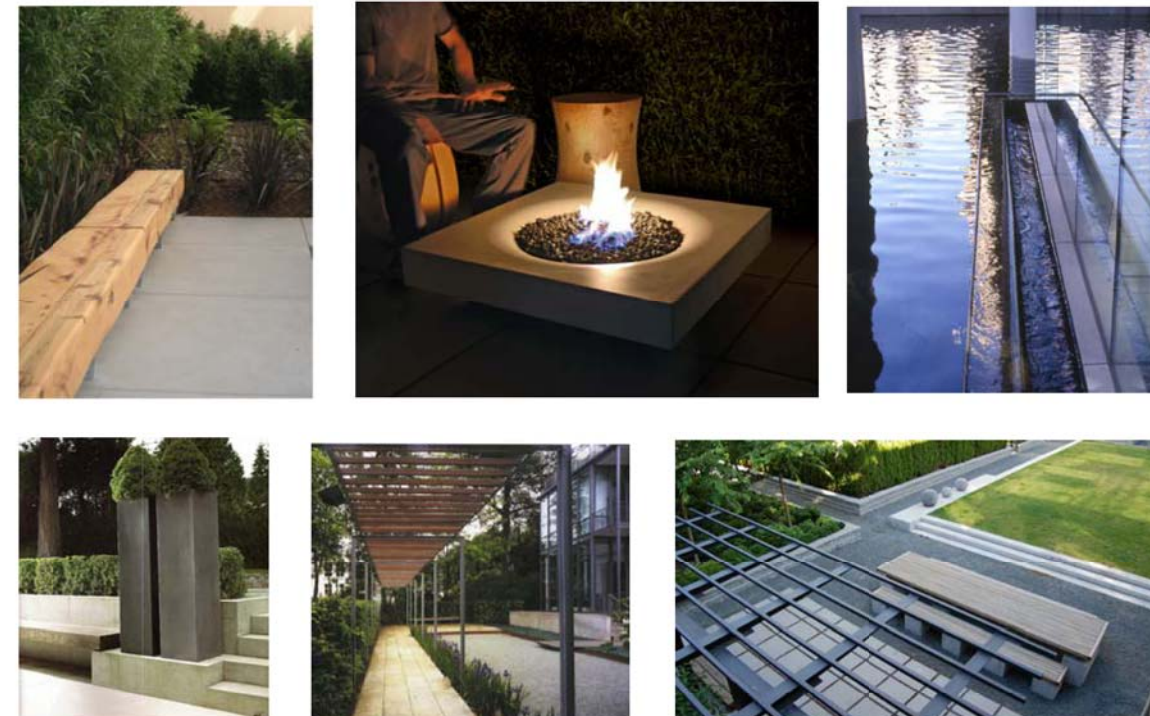
open space

- provide sequence of broad open spaces with narrow connections between spaces
- delineate clear separation between public and private open space with hedging, low walls or fences
- use water at building entry to dramatize connection between lobby and street



program | elements

- Screen courtyards from prevailing winter winds
- Provide shade protection from direct sun, but also opportunities for sitting in warmth
- Use tree canopy to envelope and protect open spaces and programmed areas
- Provide amenities (water feature, banquet table, seating) connected to indoor space



2	Issued for DP	Jun.24/2010
1	Issued for PDP	May 5/2010

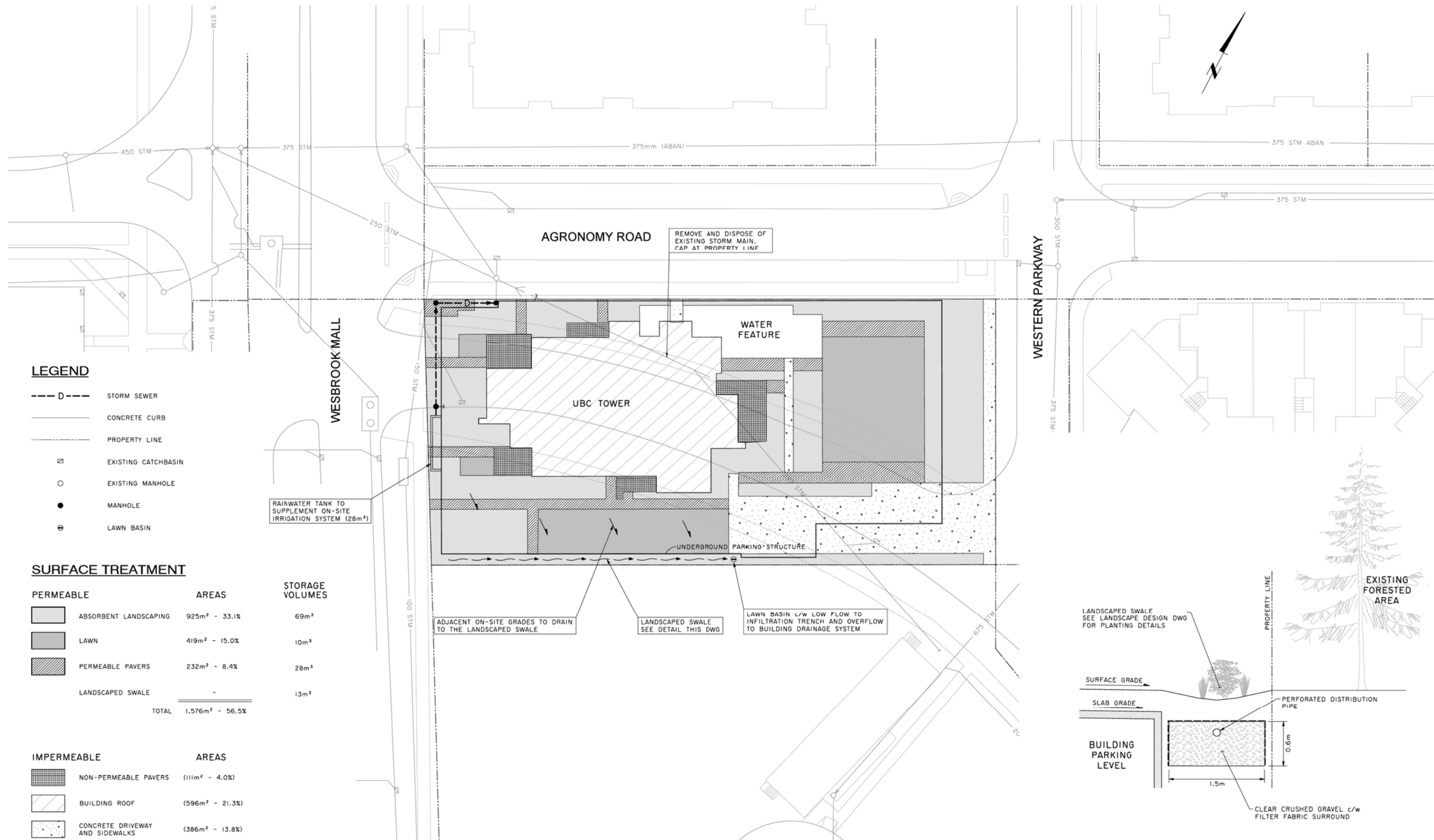
No.	Description	Date
-----	-------------	------

Copyright Reserved. This drawing is and remains at all times the exclusive property of Hapa Collaborative and cannot be used modified or copied without the expressed written consent of the landscape architect.

Wesbrook
East UBC Campus
University of British Columbia
Vancouver BC

Landscape
Design Rationale

Date	Apr.26/2010	Drawing Number
Project No.	1005	L1.4
Scale	n/a	
Drawn/Checked	jf/JF	



LEGEND

- STORM SEWER
- CONCRETE CURB
- PROPERTY LINE
- EXISTING CATCHBASIN
- EXISTING MANHOLE
- MANHOLE
- LAWN BASIN

SURFACE TREATMENT

PERMEABLE	AREAS	STORAGE VOLUMES
ABSORBENT LANDSCAPING	925m ² - 33.1%	69m ³
LAWN	419m ² - 15.0%	10m ³
PERMEABLE PAVERS	232m ² - 8.4%	28m ³
LANDSCAPED SWALE	-	13m ³
TOTAL	1,576m² - 56.5%	

IMPERMEABLE	AREAS
NON-PERMEABLE PAVERS	(111m ² - 4.0%)
BUILDING ROOF	(596m ² - 21.3%)
CONCRETE DRIVEWAY AND SIDEWALKS	(386m ² - 13.8%)
WATER FEATURE	(124m ² - 4.4%)
TOTAL	1,217m² - 43.5%

RAINWATER TANK TO SUPPLEMENT ON-SITE IRRIGATION SYSTEM (28m³)

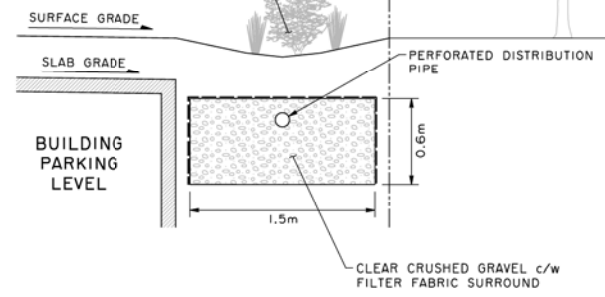
REMOVE AND DISPOSE OF EXISTING STORM MAIN. CAP AT PROPERTY LINE.

ADJACENT ON-SITE GRADES TO DRAIN TO THE LANDSCAPED SWALE

LANDSCAPED SWALE SEE DETAIL THIS DWG

LAWN BASIN c/w LOW FLOW TO INFILTRATION TRENCH AND OVERFLOW TO BUILDING DRAINAGE SYSTEM

LANDSCAPED SWALE SEE LANDSCAPE DESIGN DWG FOR PLANTING DETAILS



TYPICAL LANDSCAPED SWALE DETAIL

InterCAD
CONSULTING ENGINEERS

NO.	DATE	REVISIONS	BY	APPROVED
1	06-23-10	DEVELOPMENT PERMIT APPLICATION	GW	

POLYGON DEVELOPMENT 254 LTD.

UBC TOWER
EAST CAMPUS



STORMWATER MANAGEMENT PLAN

Design: G.WOOD
Drawn: S. GUBBELS
Plot Date: 23 JUN 10
Plot Time: 08:17:27

Drawing Number: **AD38-C-801**
Revision: **1**