

**Project Summary**

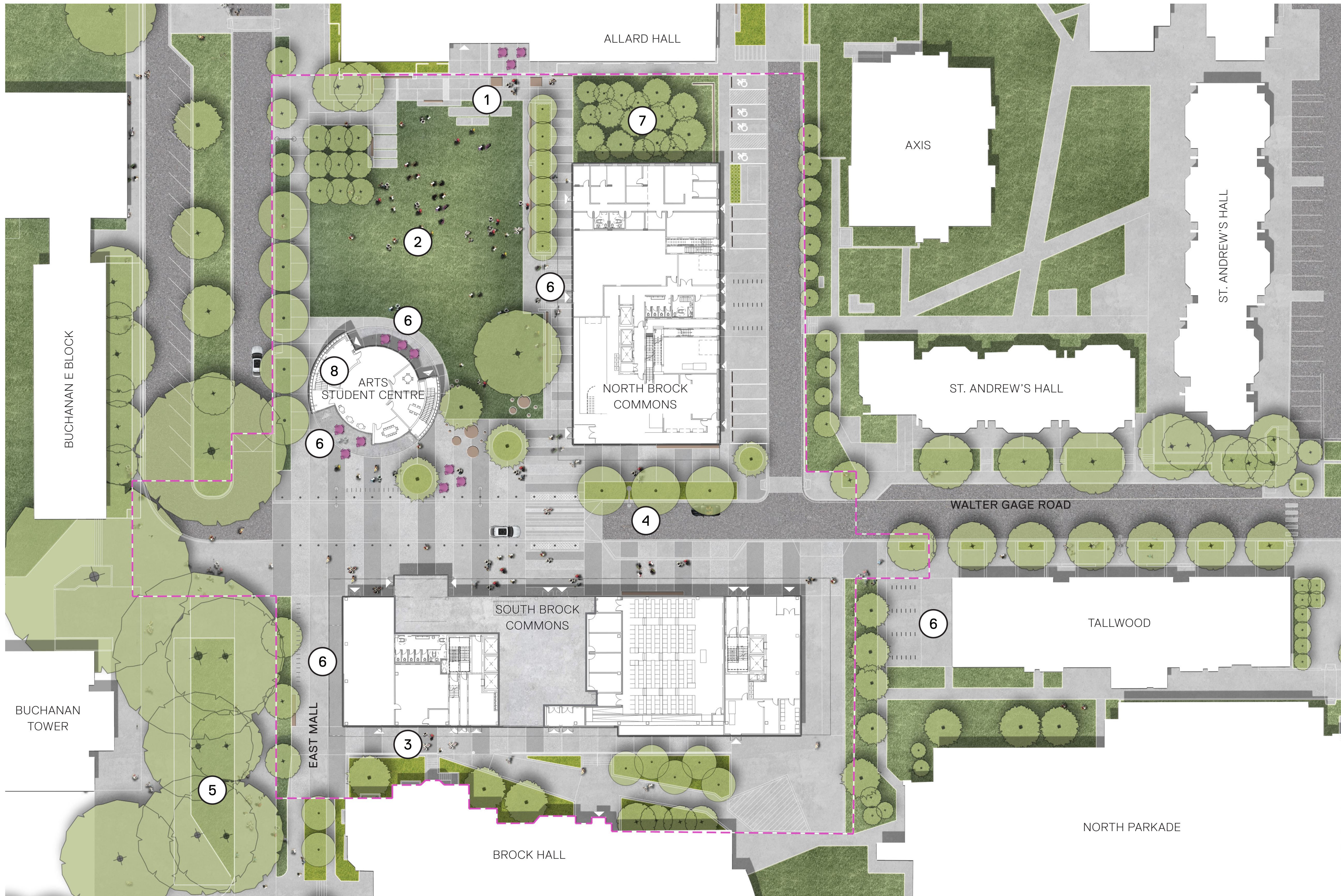
The Arts Student Centre is conceived as a compact stand-alone structure with a total net area of approximately 11,000 sq ft. It is intended to be an efficient, multi-purpose facility that will advance the core mission of the Arts Undergraduate Society to improve the academic, social, personal, and professional lives of Arts students at UBC Vancouver, and provide much-needed amenities to support the learning, social, collaboration and innovation space needs of a diverse Faculty of Arts student population. It will be a 'common ground' for UBC Arts students to interact across disciplines. The facility will include a range of targeted activity spaces and amenities to support creative engagement. These include media and graphics production spaces, video conference spaces, as well as a student-run art gallery. A dedicated multi-use space will be used for increasing collaborative engagement with faculty groups – e.g. Arts Co-Op program, Go Global studies abroad mentor-ship program, tutoring services and 'Welcome to UBC' resources for first year Arts students to name a few.

**Campus Guidelines and Design Principals**

Leckie Studio is working closely with PFS Studio and Campus and Community Planning to develop the design principals for the development of the Brock Commons Site and the Arts Student Centre.

Context: Project Summary



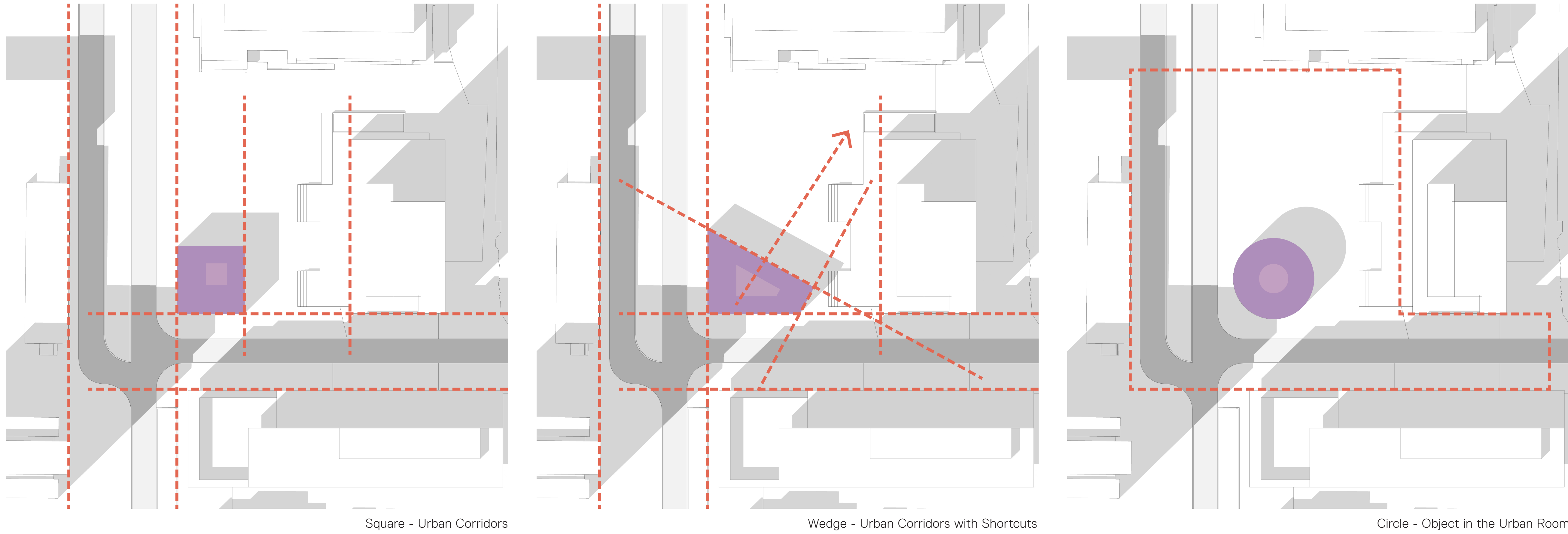
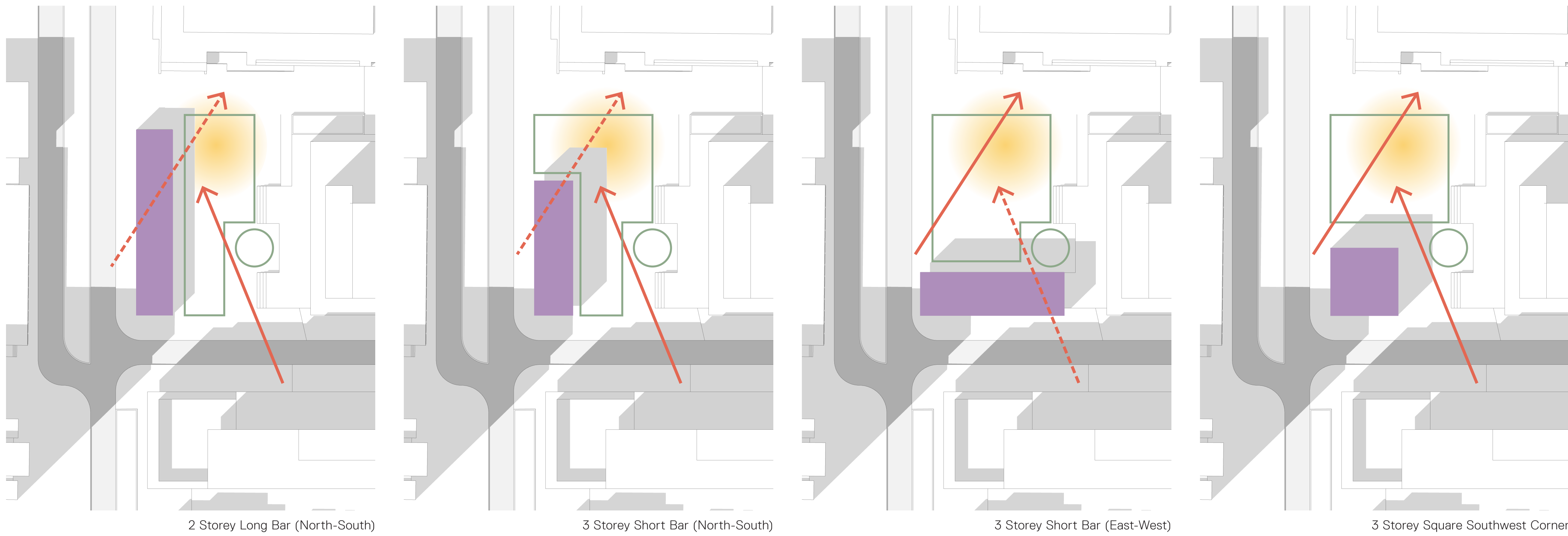


#### Legend

1. Existing Allard Hall Porch
2. The Green
3. Brock Corridor
4. Traffic Calmed Walter Gage Road
5. East Mall Pedestrian Zone Extension
6. Social Porch
7. Existing Planted Berm
8. Arts Student Centre

Context: Public Realm Concept Plan





### Design Principles

**Views**  
The ASC building should consider views into and around The Commons including; views to Allard Hall and views from the public entrance to Brock Commons to the south.

**Solar Access**  
The ASC building should maximize solar access to The Commons and south edge of Allard Hall with emphasis on the hours of 12-6pm during the academic year.

**Programmable Open Space**  
The ASC building should maintain programmable open green space at The Commons to support programs of gathering, informal recreation, and play.

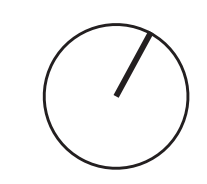
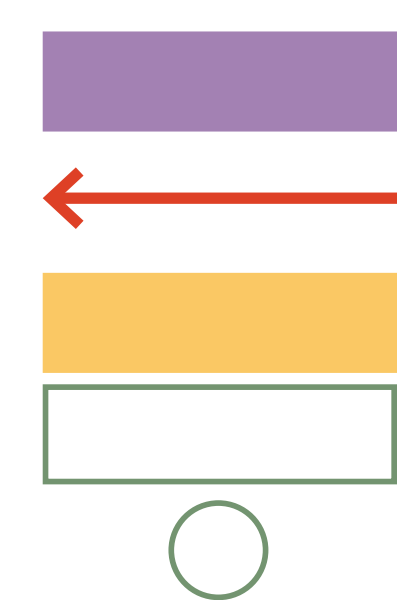
**Urban Room**  
The ASC building should consider the space of The Commons as an 'urban room' with edges defined by Brock Commons South, Brock Commons North, Allard Hall, and Buchanan.

**Dialogue**  
The ASC building should acknowledge the architectural dialogue that ASC sets up within this urban room.

**Unique Identity**  
The ASC building should be understood as a pavilion with a unique

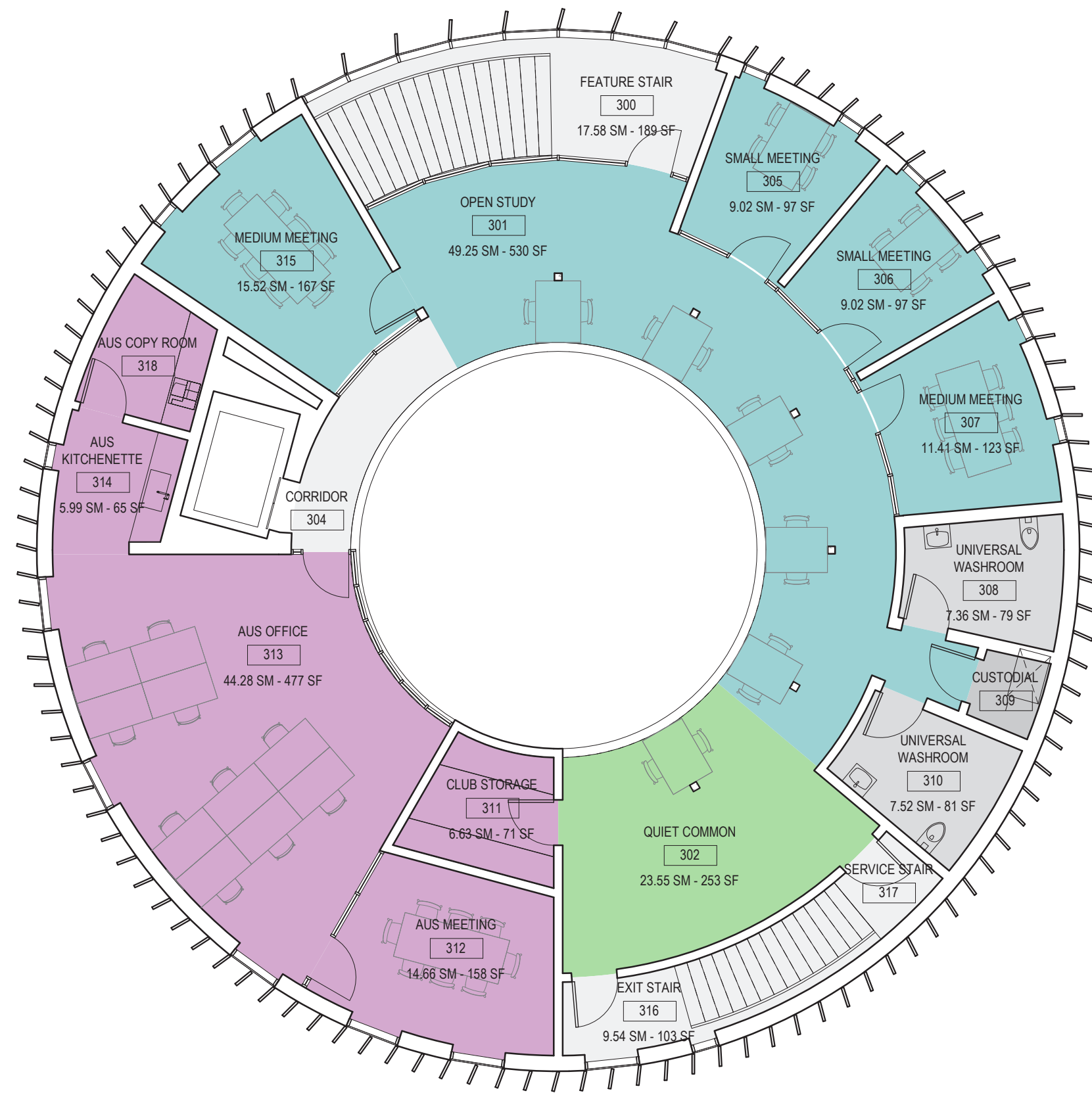
### Legend

- Building Footprint
- View
- Solar Access
- Programmable Green Space
- Retain Existing Tree

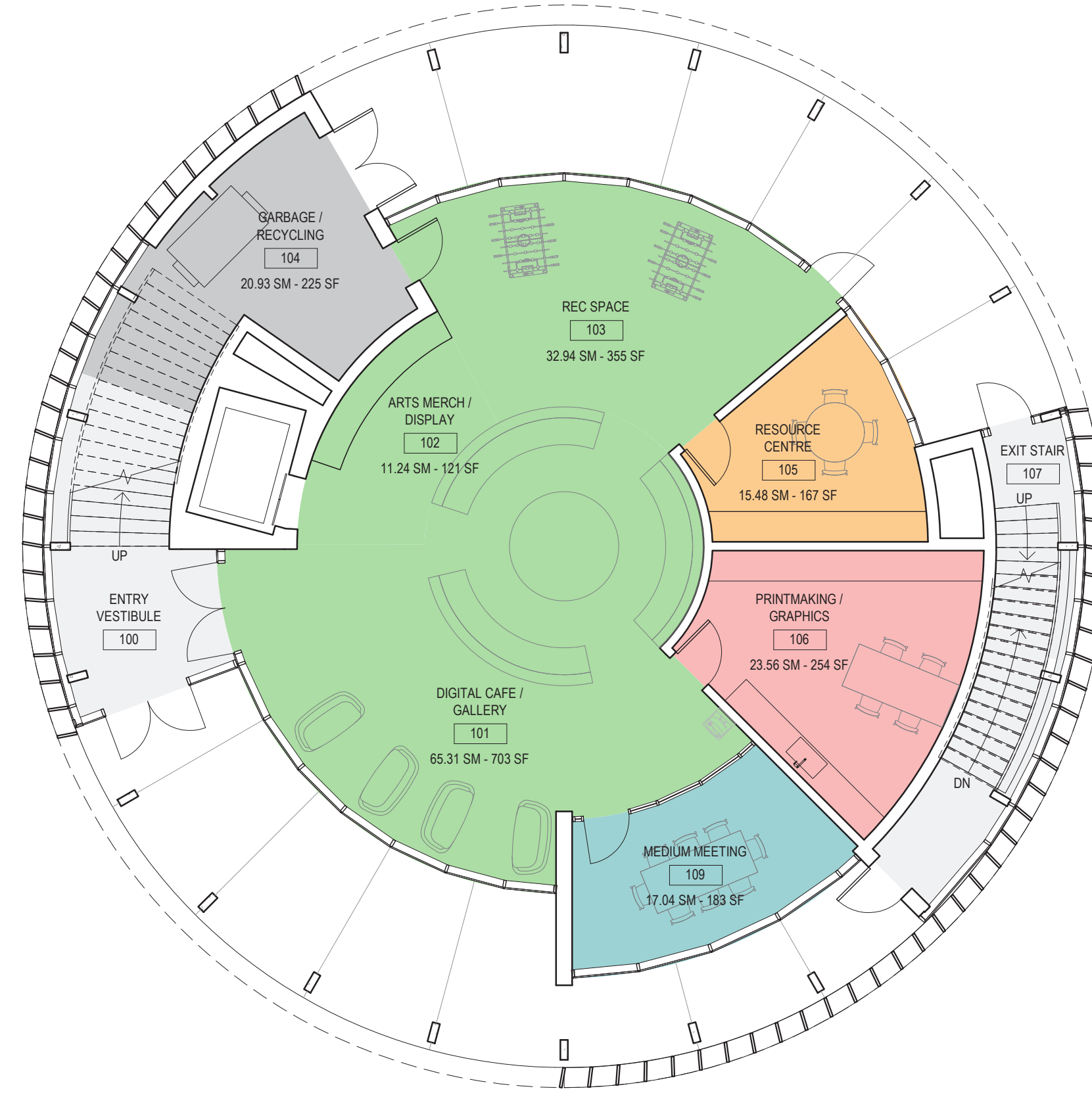


Design Rationale: Siting and Massing

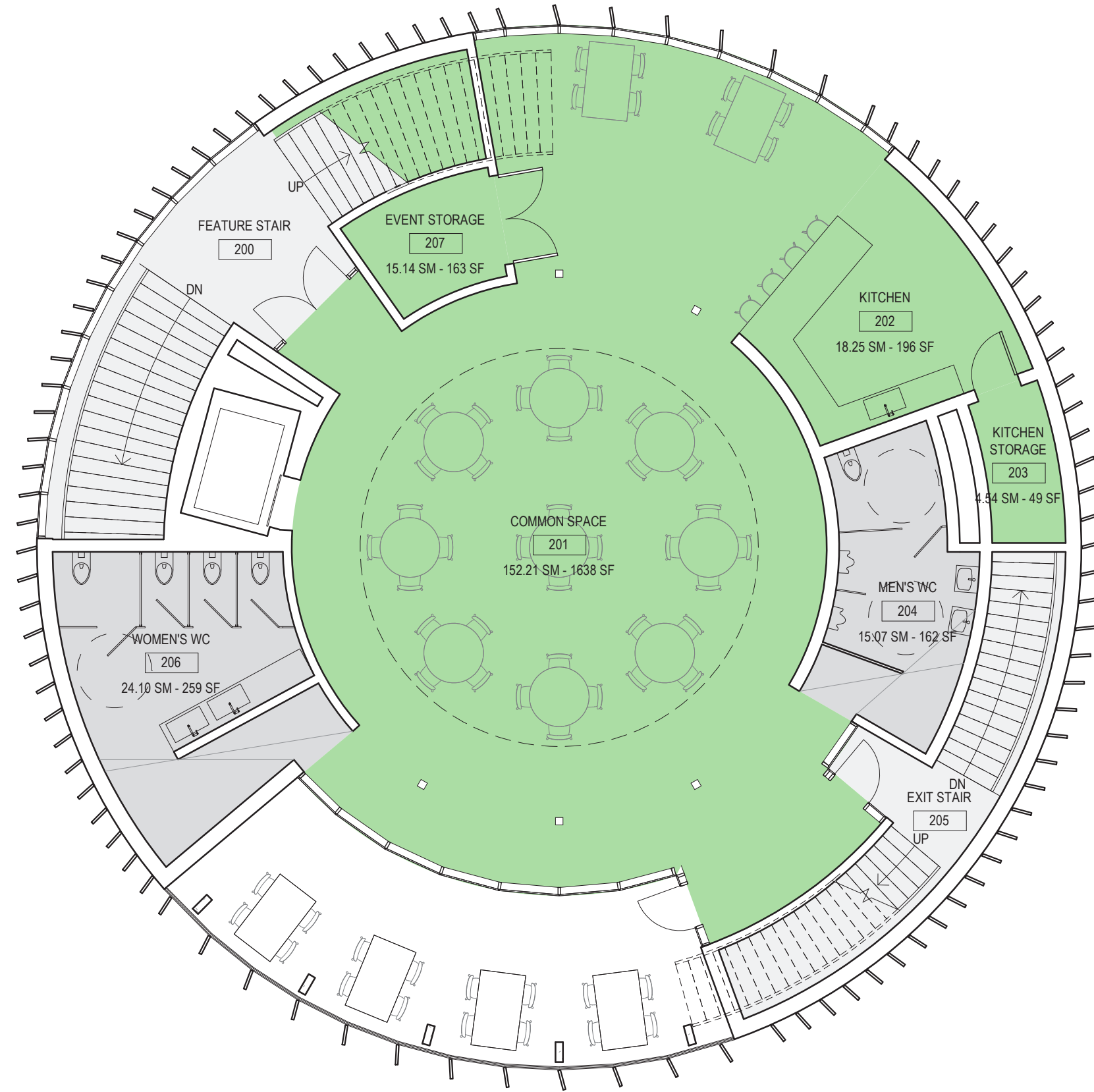




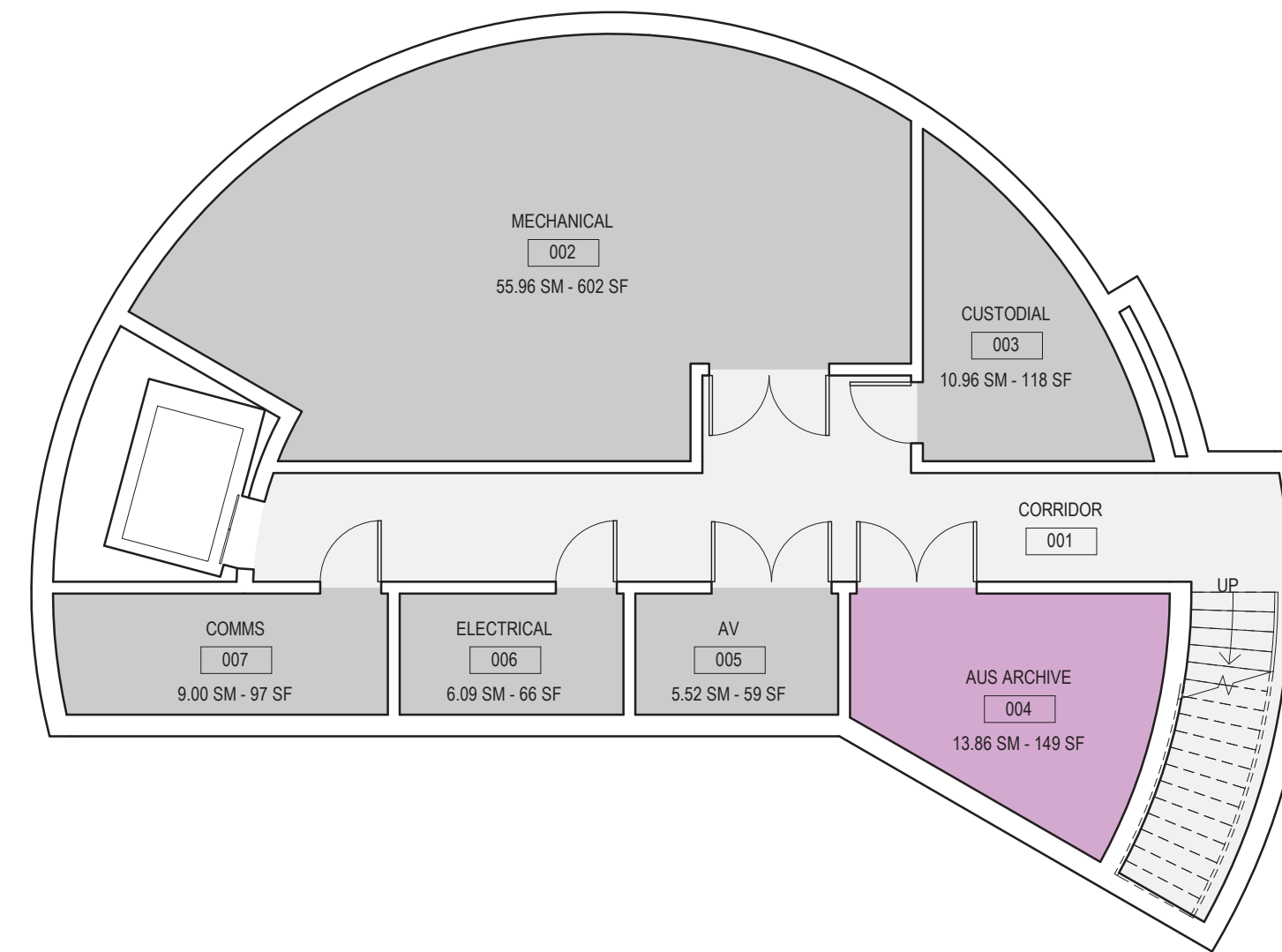
Level 3 - 1:100



Level 1 - 1:100



Level 2 - 1:100



Basement - 1:100

#### Program Assumptions

The ASC building area and program requirements remain consistent with the 50% Construction Documents from previous design.

#### Legend

Targeted Activity Space

Collaborative Engagement

Study / Meeting Space

AUS Office & Support

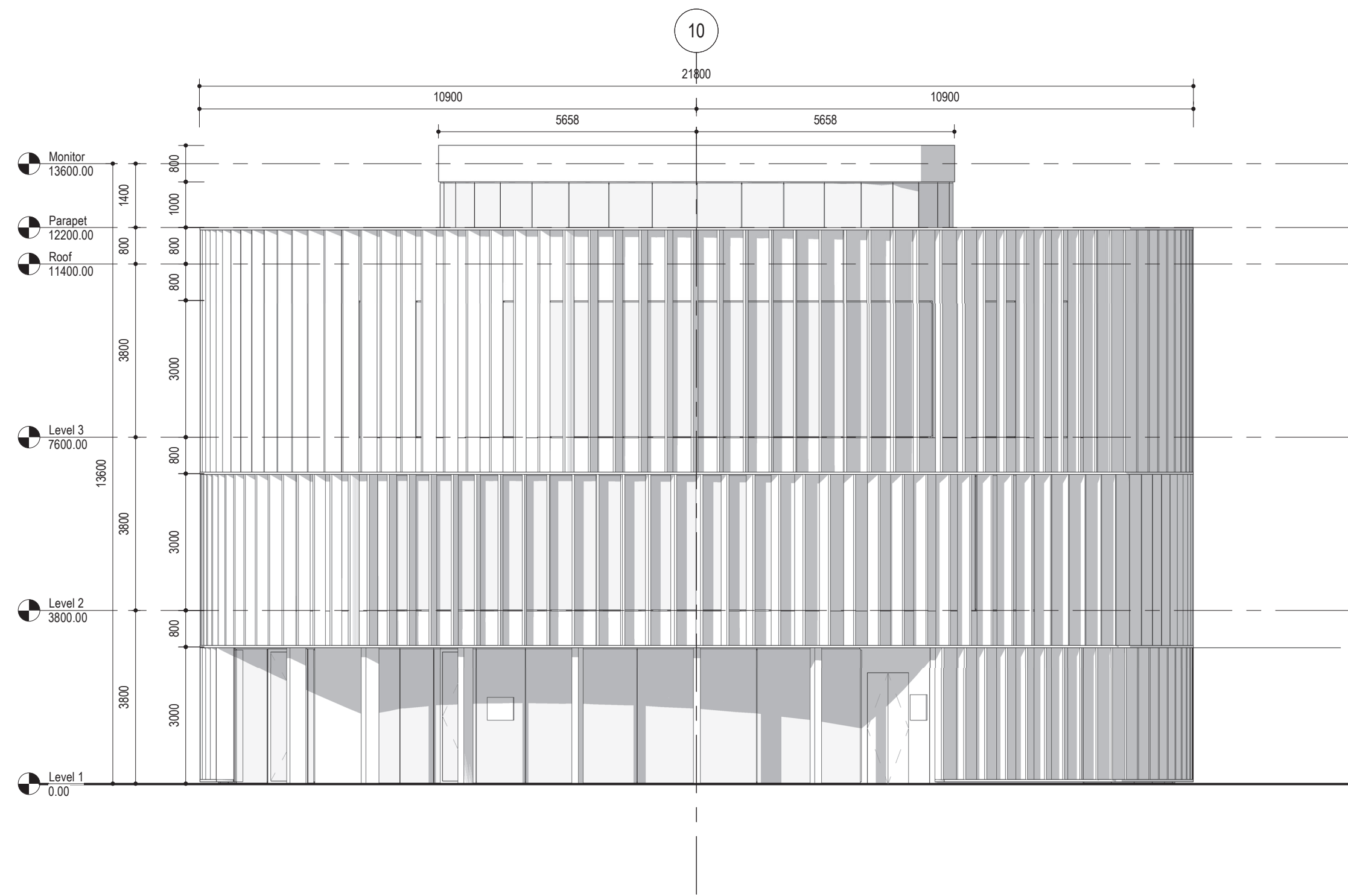
Social / Lounge Space

Service Space / Building Support

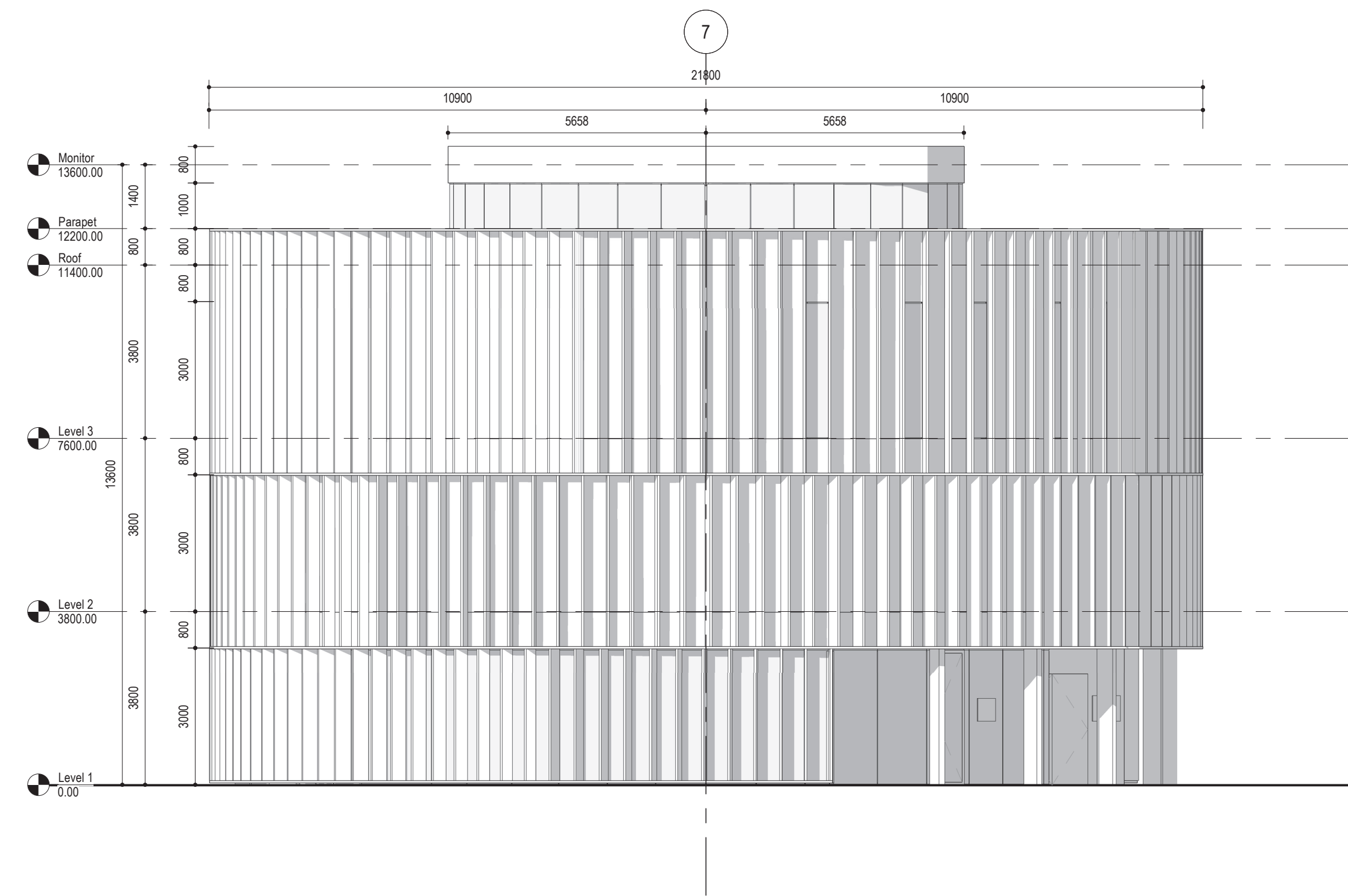


Schematic Design: Program Floor Plans

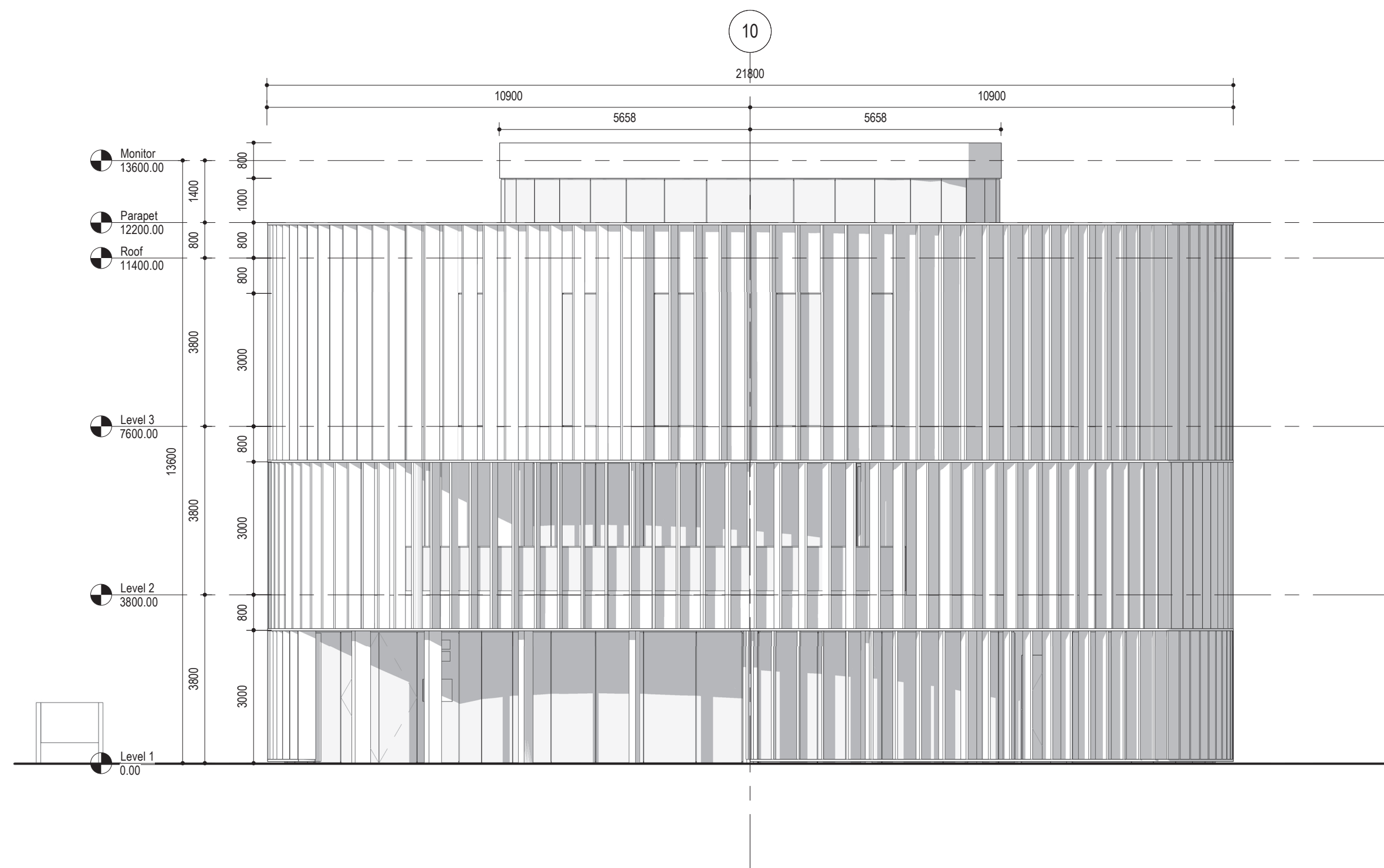




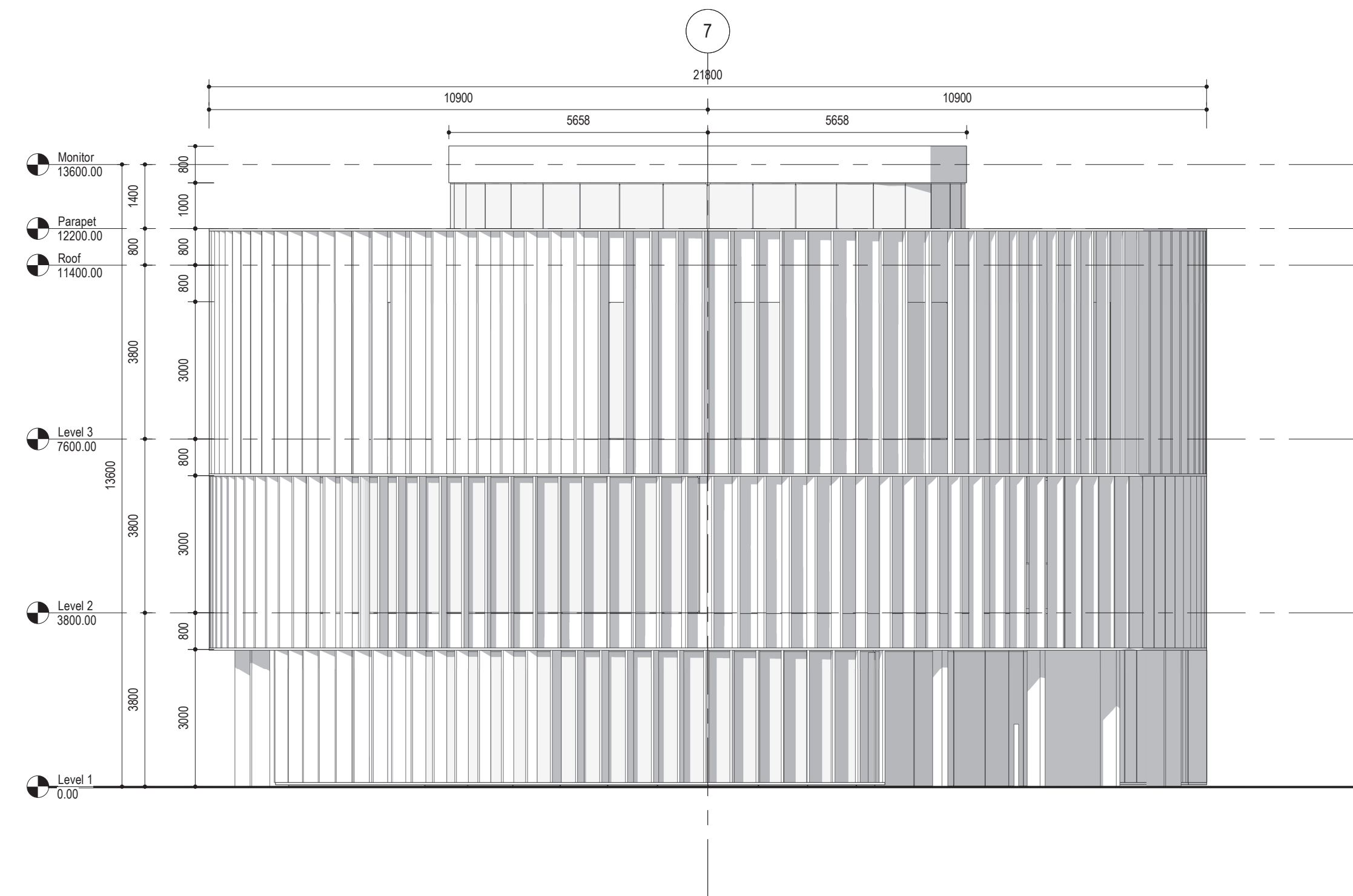
North Elevation - 1:100



East Elevation - 1:100



South Elevation - 1:100



West Elevation - 1:100

Schematic Design: Building Elevations





Northwest Perspective



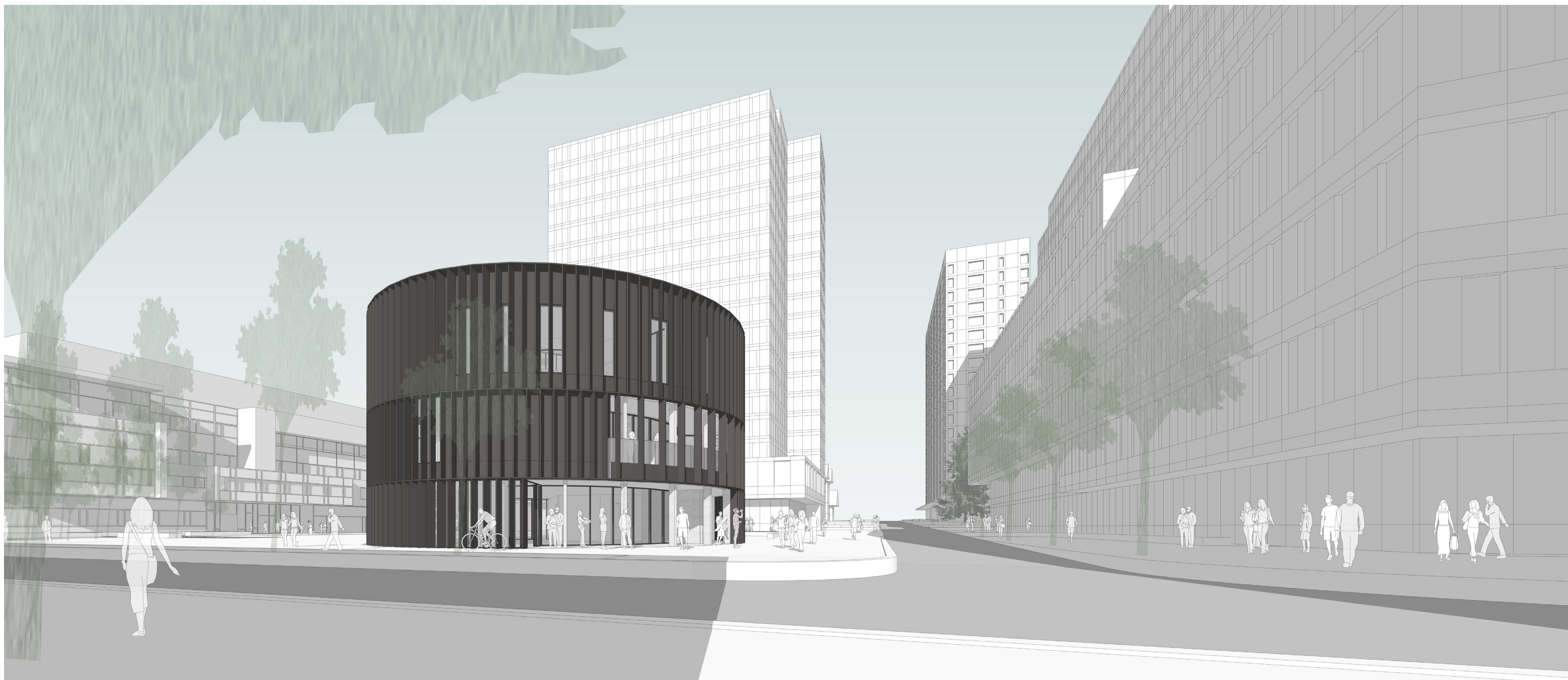
Southwest Perspective

Schematic Design: Exterior Perspectives





View of Covered Outdoor Space from Walter Gage Road



View of Entry from East Mall

Schematic Design: Exterior Perspectives