

FAIRVIEW COMMONS DESIGN PROCESS

The 1992 Campus Plan describes the Main Mall as a cohesive linear open space punctuated at intervals with special places and nodes. Each special place has a distinct character and function and corresponds to a thematic structure.

In fall of 2008, four workshops were held with students, faculty and staff from Sciences, Applied Engineering, and Land and Food Systems to develop programming and design ideas for a new campus commons. As the social heart or "centre of gravity" for the sciences, Fairview Commons will bring students, faculty and staff together in a common setting for performances, talks, rallies and other large gatherings. The result of the workshop was the *Concept Plan* shown on this board.

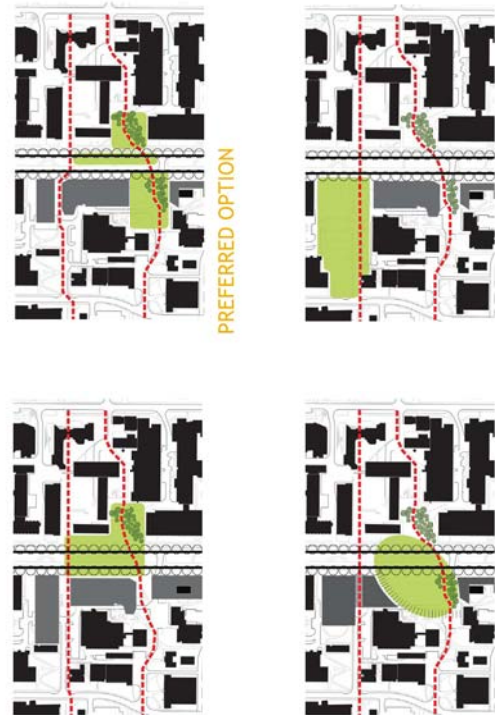
The design of Fairview Commons encompasses a new water feature on Main Mall; an informal, multi-use Commons Meadow; a Plaza of the Sciences that will showcase science displays; the extension of Sustainability Street from the CIRS building to Main Mall; and the revitalization of Fairview Grove. All areas will feature new seating, walkway paving, and planting. The emphasis will be on creating an pedestrian and environmentally friendly space and a "Learning Landscape" where ecology, educational opportunities and public amenity co-exist.

FUNDING

There are two sources of funding for Fairview Commons. The first is the Infrastructure Impact Charge (IIC) levied on new construction projects. The IIC Fund directs \$38 million over the next fifteen years to public realm improvements approved through the Public Realm Plan by the Board of Governors in 2009. Second, funds through donations will be pursued with the support of the University's Development Office.

TIMING

Construction of Fairview Commons will begin in 2012 following the completion of Earth Systems Science Building (ESSB) to the north of the Commons.

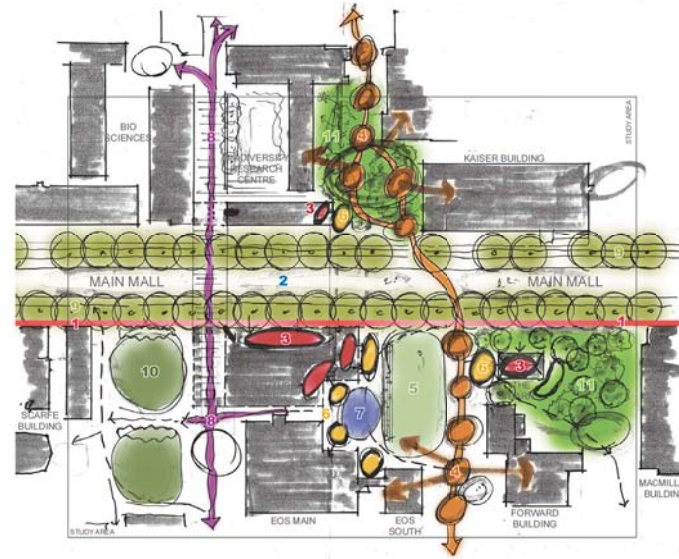


PLANNING OPTIONS FOR FAIRVIEW COMMONS

COMMON IDEAS OF 3 OPTIONS - SUMMARY

- Building set back line**
 - ESSB to respect main mall typical building setback
- Museum to Museum**
- ESSB - Public Faces**
 - create public face to main mall (i.e. transparent, museum, inviting)
 - create public face to "Sustainability Walk" (i.e. student study, food services, the kitchen, common areas, outdoor terraces, transparent unity, capture sun)
- Extend 'Sustainability Walk'**
 - to east of Main Mall
 - unite all adjacent sciences/engineering to engage open space and buildings
 - Reveal initiatives
- Create 'The Lawn'**
 - open grass area east of ESSB
 - informal recreation and gathering
 - smaller gathering places at edges (i.e. terrace, stairs, the barn, the kitchen)
- Create sunny plazas**
 - adjacent to ESSB building edges
- Learning Landscape**
 - encourage all facilities to occupy outdoor spaces with learning opportunities, either temporary or permanent
 - encourage outdoor classrooms
 - living landscape (i.e. biodiversity)
- The East West Linkages**
 - "Sustainability Walk"
 - "Biodiversity Path"
- Respect and Retain Main Mall**
 - retain main mall as per planning guidelines (PFS)
 - BUT encourage occupancy of temporary events, exhibits, activities (i.e. public art, museum, recreation)
- Retain the North Courtyard**
 - between ESSB and SCAFFE
 - for recreation, gathering, learning
- Augment The Barn/Fairview Grove(s)**
 - the barn needs better food service and outdoor spaces (possible relocation to edge of the lawn)
 - enhance the forest or future building site

FAIRVIEW COMMONS PRELIMINARY STUDY

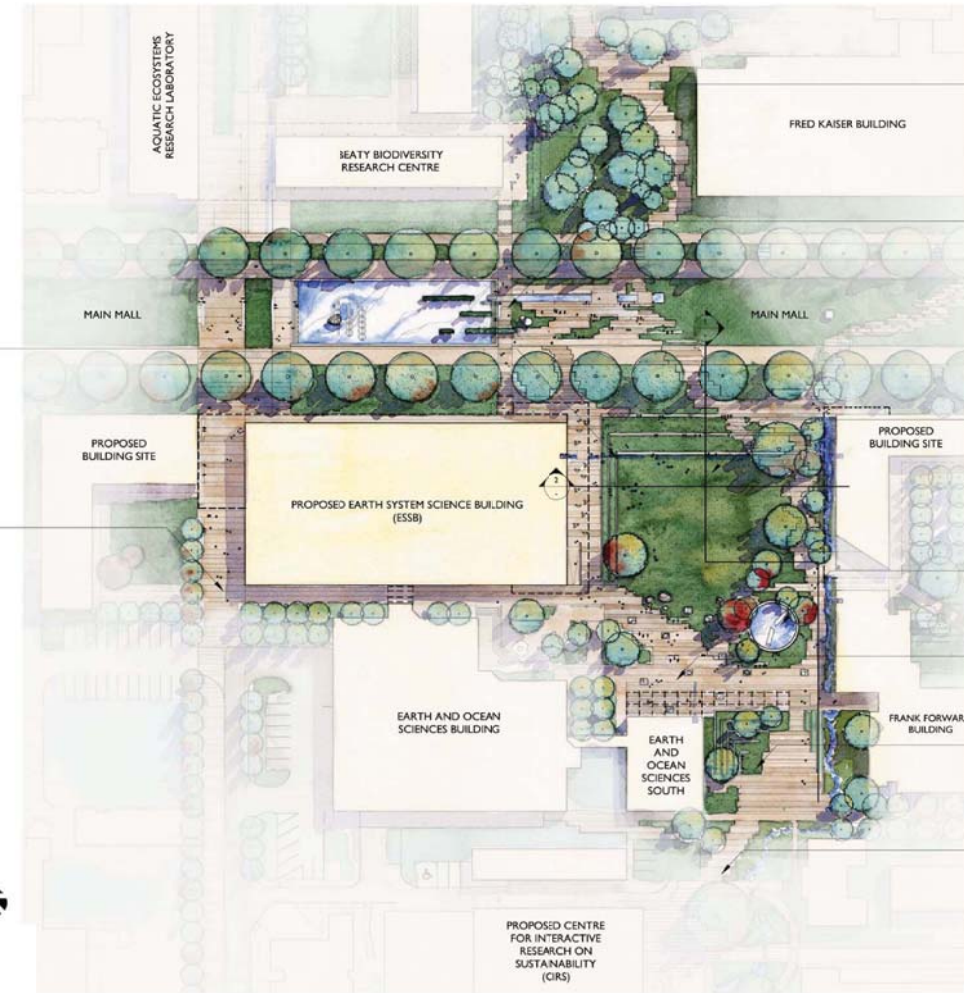


THE TERRACE & STEPS

- SUNNY ORIENTATION
- FOOD, OUTDOOR/INDOOR SEATING/TABLES
- PARTIAL WEATHER PROTECTION
- INDOOR FOOD AND SOCIAL SPACE ADJACENT

WALK OF THE COURTYARDS

- INDOOR FOOD AND SOCIAL SPACE ADJACENT, RE. WEATHER PROTECTION, LANDSCAPE, MINIMAL PEDESTRIAN CONFLICTS WITH VEHICLES



FAIRVIEW GROVE

- BIODIVERSE FOREST
- FOREST MANAGEMENT PLAN PROPOSED
- PLACES TO SIT (SMALL GROUPS)
- BIODIVERSITY CAFE

MUSEUM FORECOURT

- CREATING A "PAUSE" ALONG MAIN MALL
- REFLECTING POND (WORKING ECOLOGY) AS FOCUS TO MUSEUM DISTRICT
- SYMBOLS OF SCIENCES
- SOCIAL SPACE - SIT ON STEPS SEATING, POND EDGE
- ENGAGED BUILDING EDGES (EAST AND WEST)

THE MEADOW

- SOCIAL HEART FOR SCIENCES
- ENGAGING EDGES - FOOD, SUN, STEPS, ACTIVE BUILDINGS
- PLACES FOR LARGE AND SMALL GATHERINGS
- LEARNING, RECREATION AND SOCIAL PLACE

MEMORIAL

- PROPOSED DECEMBER 6th MEMORIAL

PLAZA OF THE SCIENCES

- TEMPORARY AND PERMANENT EXHIBITS
- WORKING PROJECT SPACE (UNDER CONSTRUCTION)
- LEARNING PLACE

OUTDOOR CLASSROOM

- AMPHITHEATRE ON TERRACED SLOPE
- UP TO 150 PEOPLE
- SOUTHWEST ORIENTATION

SUSTAINABILITY STREET

- EXTENDS FROM EAST MALL TO WEST MALL
- INCORPORATES AS MANY SUSTAINABLE SCIENCE IDEAS AS POSSIBLE
- REVEALS SUSTAINABILITY - ESPECIALLY SOCIAL AND ENVIRONMENTAL, E.G. STORMWATER CHANNELING/BIOSWALE
- MAJOR EAST-WEST LINK ON CAMPUS

FAIRVIEW COMMONS CONCEPT PLAN (SUPERSEDED) January 8, 2009

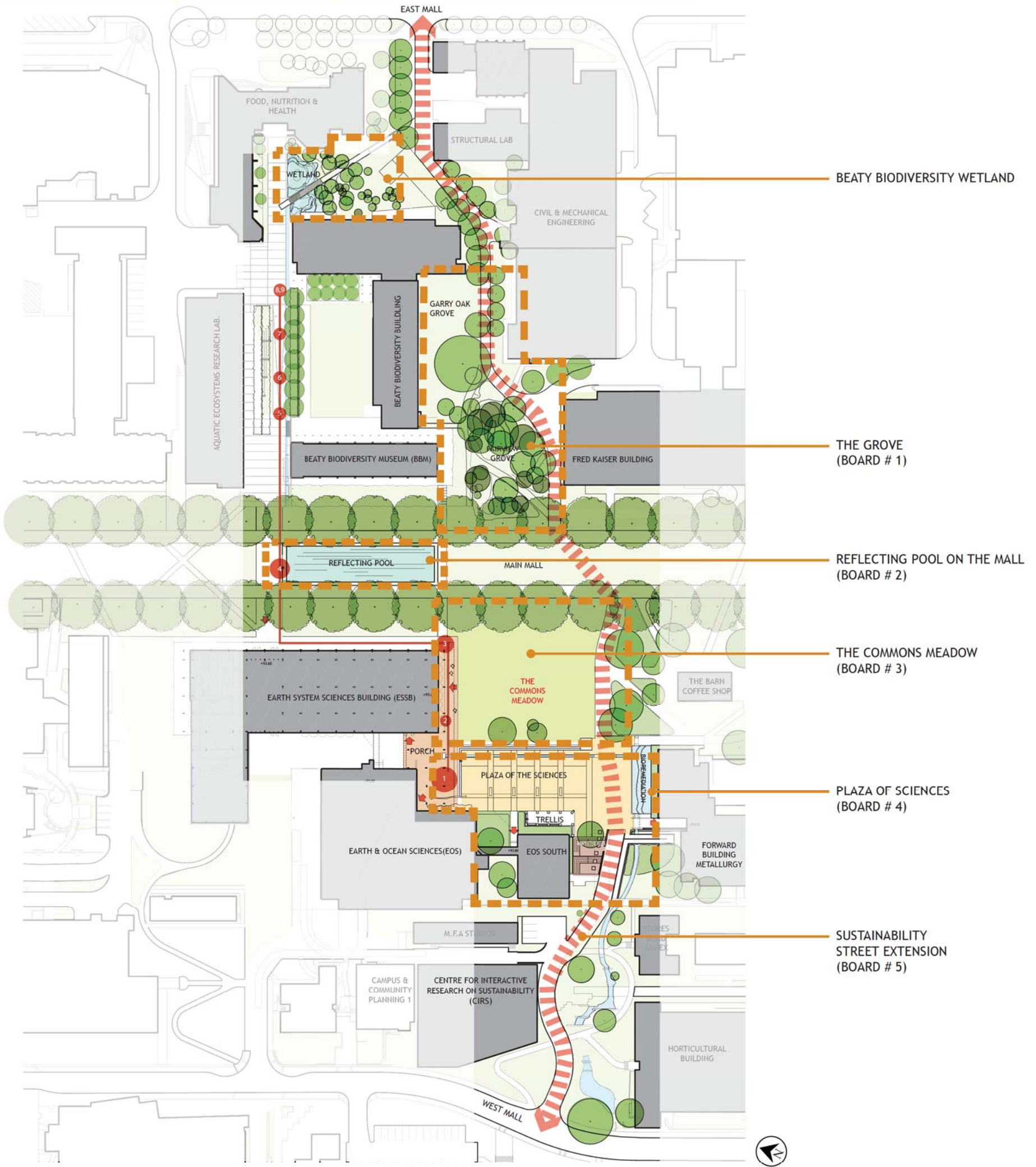


a place of mind

THE UNIVERSITY OF BRITISH COLUMBIA

CAMPUS AND COMMUNITY PLANNING

April 1, 2010
Consultant: Phillips Farevaag Smallemberg



FAIRVIEW COMMONS & ENVIRONS

- | | | |
|---|---|--|
| <ul style="list-style-type: none"> Wetland <ul style="list-style-type: none"> • Living laboratory • Ecologically rich (flora and fauna) • Fed by Beauty rill water The Grove (Fairview Grove) <ul style="list-style-type: none"> • West Coast rainforest w indigenous planting • "Learning Landscape", ecological & forestry education • Forest experience: Nurse logs, soft surfacing, interpretive panels • Social gathering for group of 15 people Garry Oak Ecosystem <ul style="list-style-type: none"> • Forest study • Compare/ contrast with Temperate Rainforest Reflecting Pool on the Mall <ul style="list-style-type: none"> • Site and expression of "oxygen crisis" along geological timeline • Overflow to Beauty rill and wetland • Social gathering place Forest Edge <ul style="list-style-type: none"> • Extension of The Grove - between the Barn and the Commons Meadow • Naturalistic edge to the Meadow • Native/ indigenous planting • "Edible landscape" • Wildlife habitat | <ul style="list-style-type: none"> The Commons Meadow <ul style="list-style-type: none"> • Informal, multi-functional gathering/ passive recreation • "Landscape room" off Main Mall Café Porch <ul style="list-style-type: none"> • Canopy provides weather protection • Canopy connects ESSB and EOS buildings • Aspect over The Meadow • South-west sun orientation • Outdoor seating Museum Porch <ul style="list-style-type: none"> • Canopy provides weather protection • Social space with seating • Information board/ kiosk: "What's happening in world of science", weather readouts from ESSB weather station • Staging for school groups Plaza of the Sciences <ul style="list-style-type: none"> • Gathering and exhibit space • Temporary and permanent exhibits • Science expression: Possibilities include bore hole & core sample, rock measure, geological strata, mathematical paving, sound garden, "cabinet of curiosities" • Museum extension/ outdoor classroom with number of seating arrangements | <ul style="list-style-type: none"> The Steps <ul style="list-style-type: none"> • Seating steps with sunny aspect • Activates edge of Plaza Geological timeline <ul style="list-style-type: none"> • Major geological events marked on route • Links Beauty, ESSB & EOS buildings • Illustrated pathway started at Pacific Museum of the Earth (PME) & ends at the bottom of Beauty Biodiversity Ramp • Display of distinct rock, fossil & mineral specimens with illustrations Bioremediation Pond <ul style="list-style-type: none"> • Collects and filters rainwater from adjacent buildings & paving • Water drops to lower landscape to south & into water management system • Various ecologies in the pond - Naturalizes the front side of the Forward building Outdoor Classroom <ul style="list-style-type: none"> • Amphitheatre on sloped site • Sunny aspect Sustainability Walk <ul style="list-style-type: none"> • Links Bioremediation Pool, Forest Edge and the Grove • Expression of scientifically vigorous sustainability |
|---|---|--|

April 1, 2010

Consultant: Phillips Farevaag Smallegen

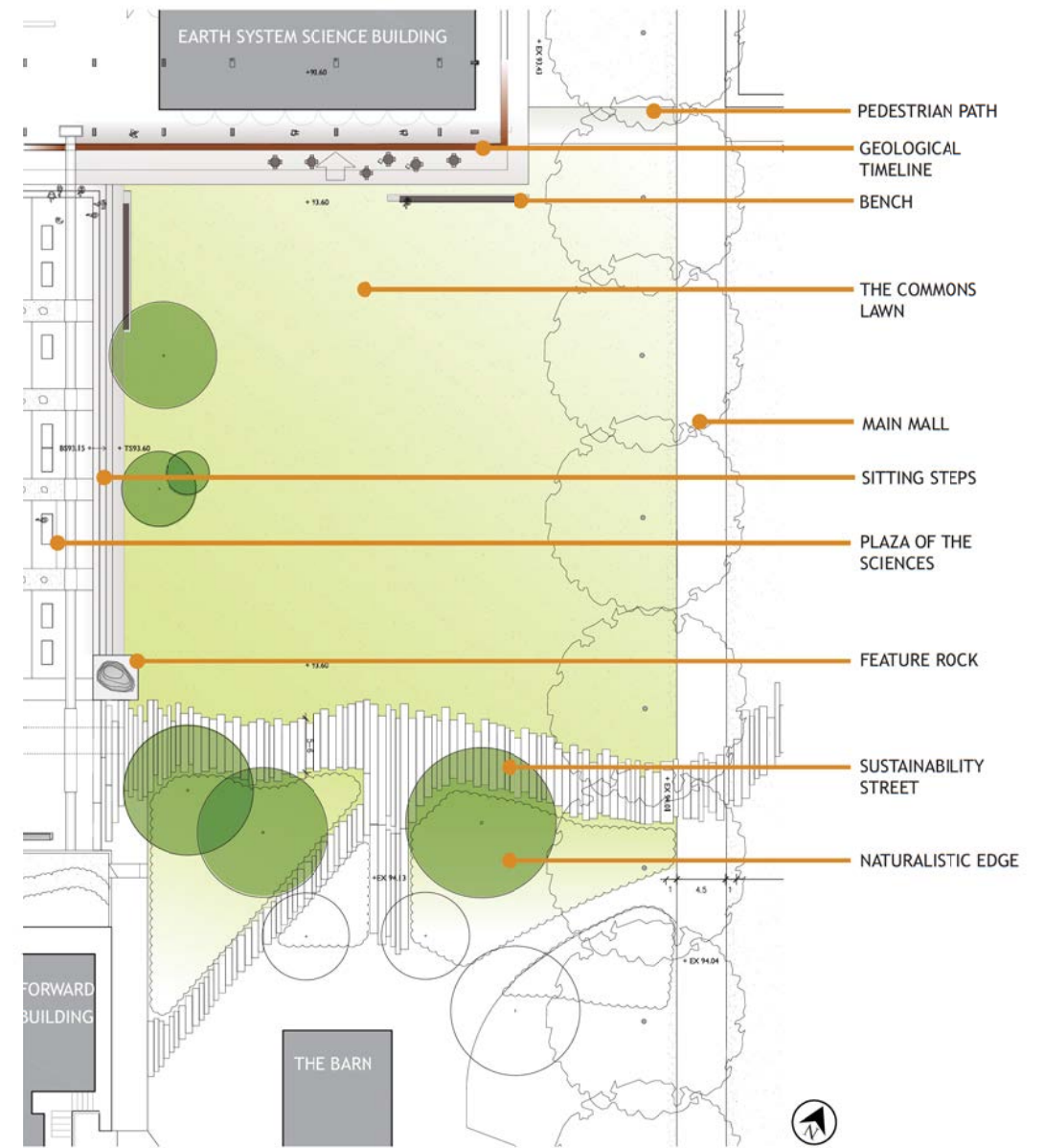




THE COMMONS MEADOW LOOKING NORTH EAST TO MAIN MALL



PRECEDENT IMAGES



THE COMMONS MEADOW

The Meadow is envisaged as an open lawn expanse beside Main Mall with a more naturalistic southern edge. The lawn would provide an informal place for all campus users to gather, socialize and recreate. The space could potentially also be used for performances and other large events. The Meadow will be activated by the adjacent new ESSB food outlets, benches and sitting steps in sunny areas, Main Mall pedestrian traffic, activities in the Plaza of the Sciences, and by the many people who cross the site throughout the day.

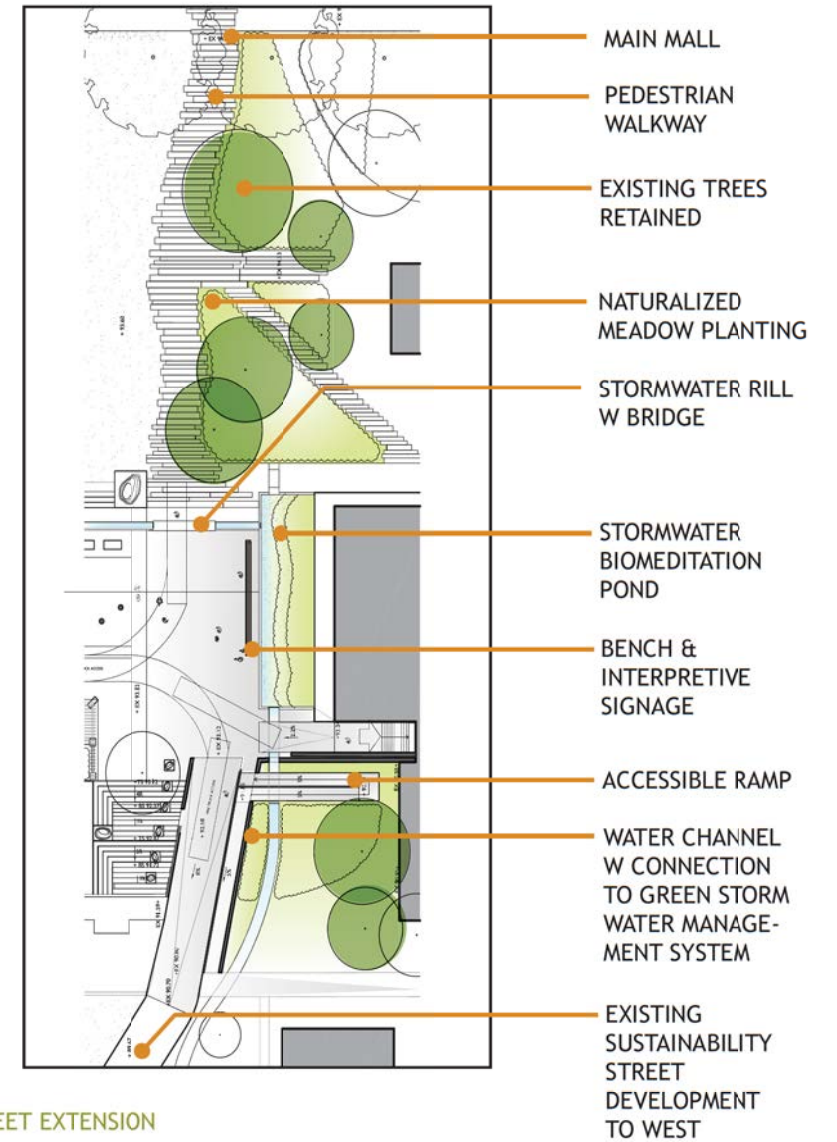
April 1, 2010
 Consultant: Phillips Farevaag Smallenberg



SUSTAINABILITY STREET EXTENSION LOOKING EAST



PRECEDENT IMAGES



SUSTAINABILITY STREET EXTENSION

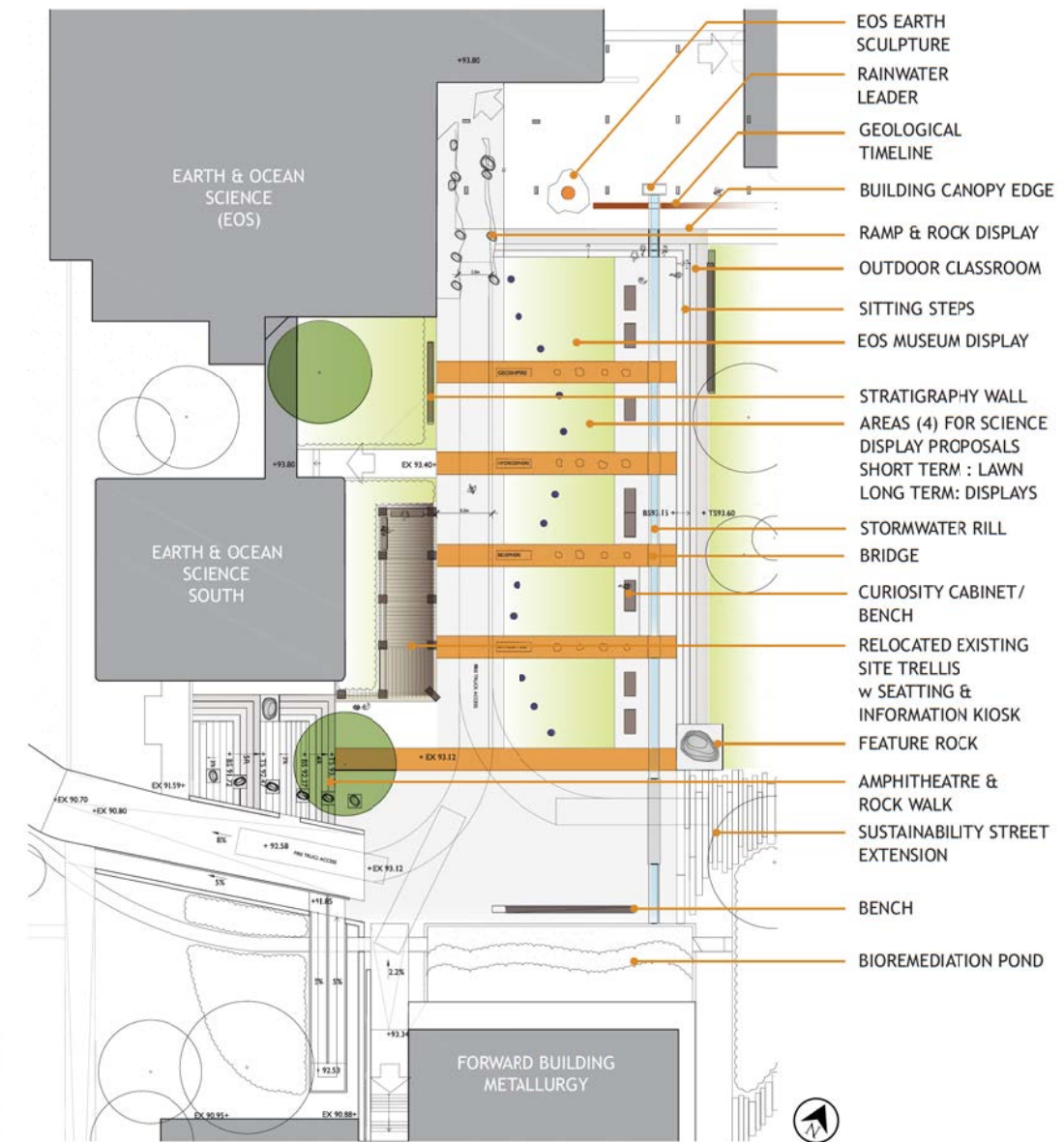
The plan is to extend the implementation of sustainable design and construction practices in a new section of Sustainability Street as it passes through Fairview Commons. Stormwater from the new ESSB building will be collected and biomediated on site before being fed into geo-exchange heat pumps and cooling technology to generate energy for nearby buildings. Recycled, re-used, and local building materials will be used in landscape elements. The retention of existing trees and the planting of additional native and indigenous vegetation will provide wildlife habitat and nature learning opportunities. As well, vehicle curtailment along this section of Sustainability Street will enhance the pedestrian experience and encourage foot and bike traffic.

April 1, 2010

Consultant: Phillips Farevaag Smallenberg



PLAZA OF THE SCIENCES LOOKING NORTH



PLAZA OF THE SCIENCES

The plaza will feature temporary and permanent science displays, highlighting the activities of the surrounding science district (funding dependent). The plaza will also act as an outdoor display space for the adjacent EOS museum. Benches, sitting steps and an amphitheatre will create a variety of seating and outdoor classroom opportunities. The Plaza will be the terminus of the Geological Timeline, linking the EOS and Beaty Buildings. A Steering Committee composed of representatives from Sciences, Applied Engineering, and Land and Food Systems will be convened to manage the content and funding for science related elements to animate the Plaza of the Sciences. These features will serve educational purposes and symbolic functions for the science faculties as well as the broader campus community. Refer to the precedent images for examples of features.

April 1, 2010

Consultant: Phillips Farevaag Smallerberg



PRECEDENT IMAGES