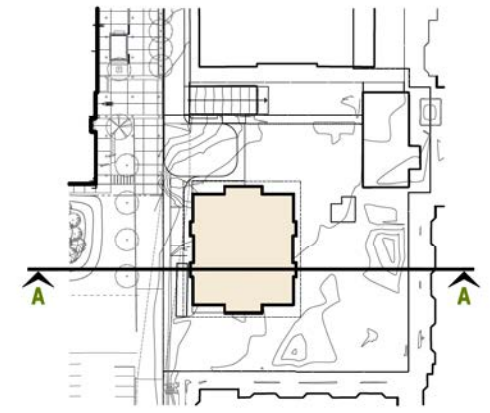
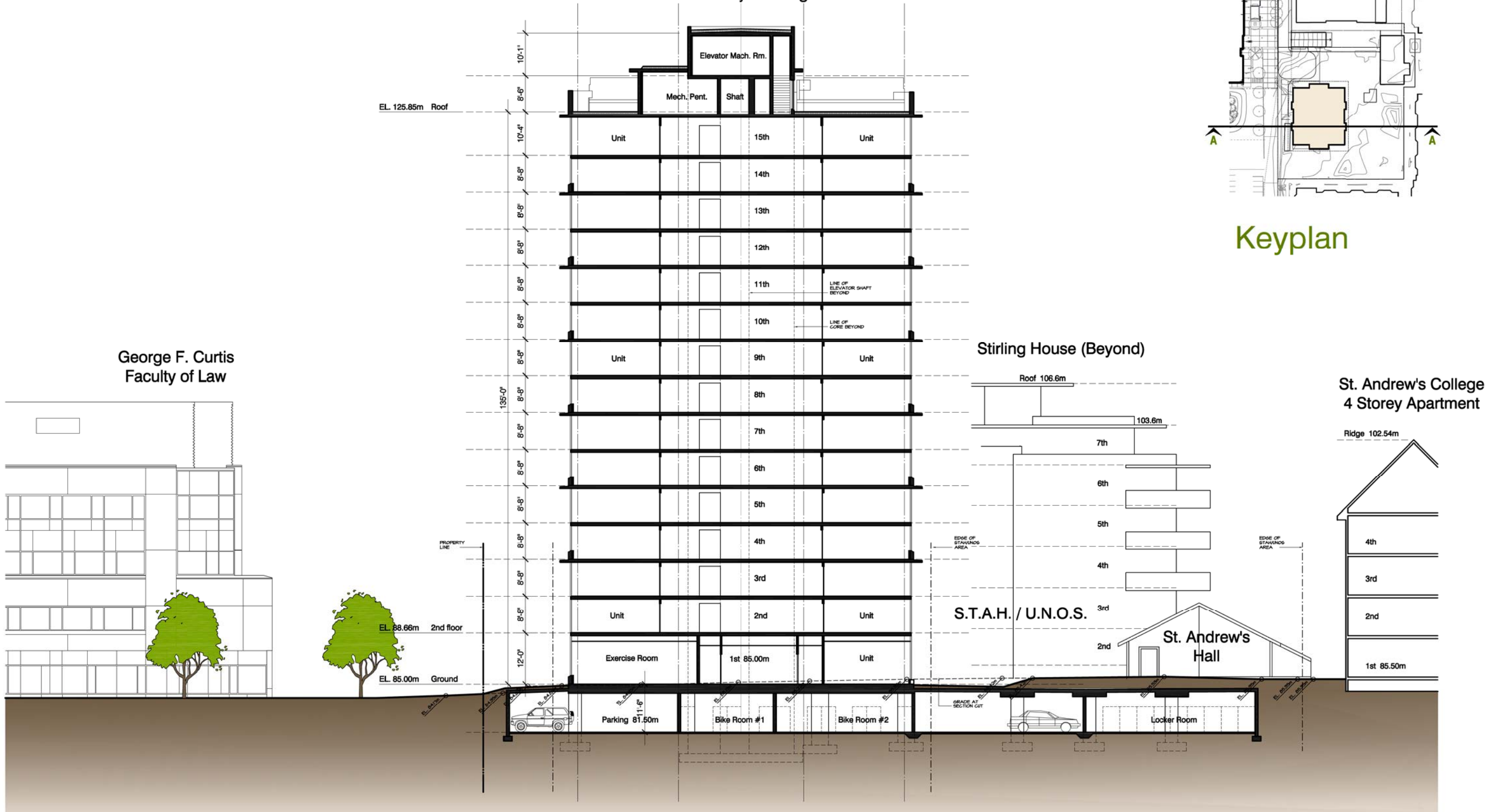


Proposed  
St. Andrew's Rental Residence  
15 Storey Building



Keyplan



Section AA:

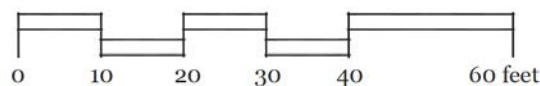
ST. ANDREW'S RENTAL RESIDENCES, UBC  
**SITE SECTION - AA**

July 7, 2011

Sk-5.01

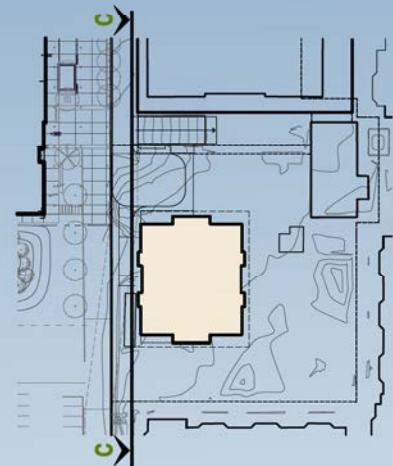


3/32" scale

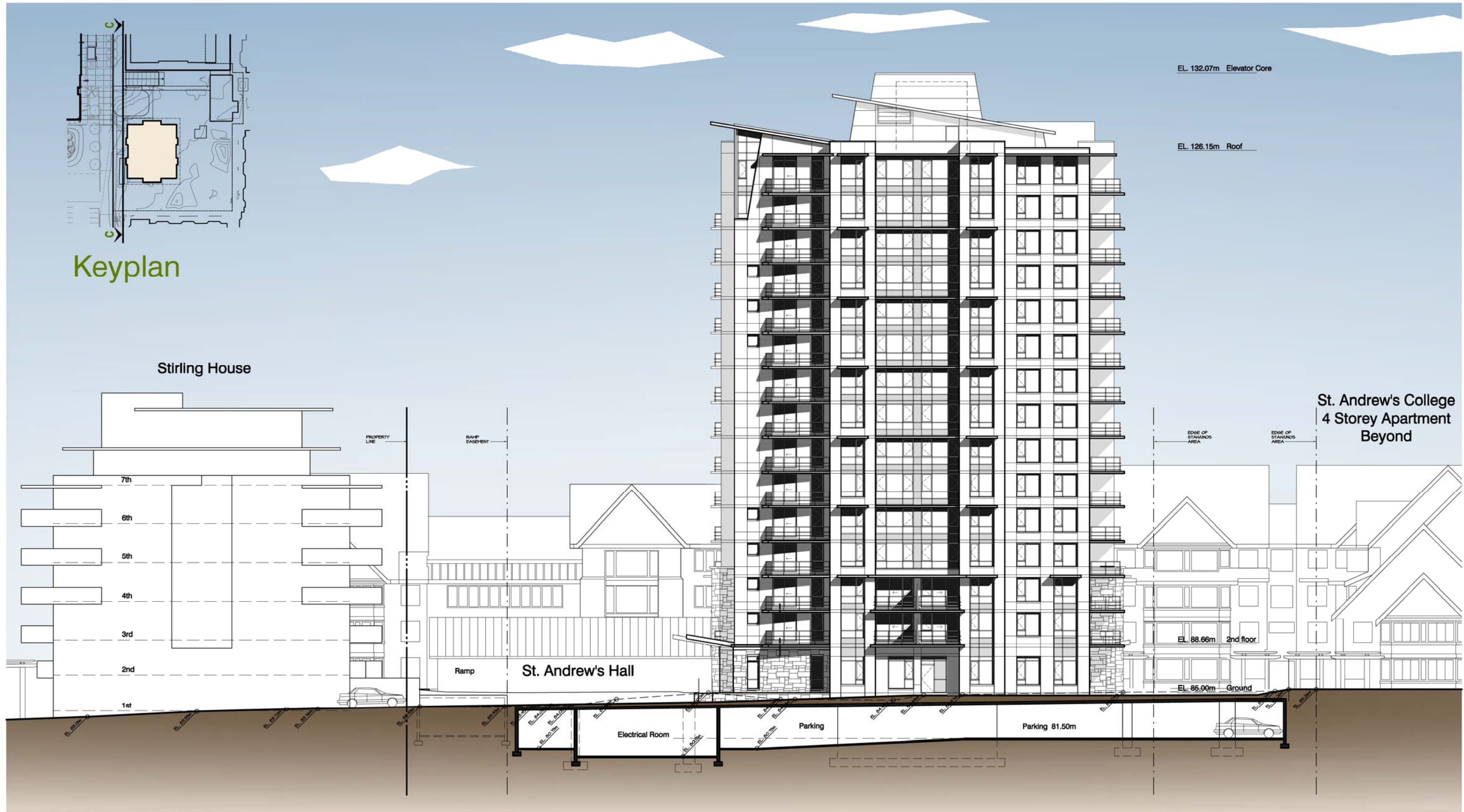








Keyplan

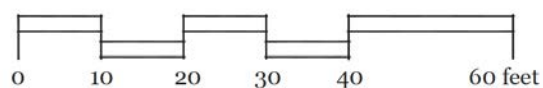


Section C:

1. West Elevation



3/32" scale

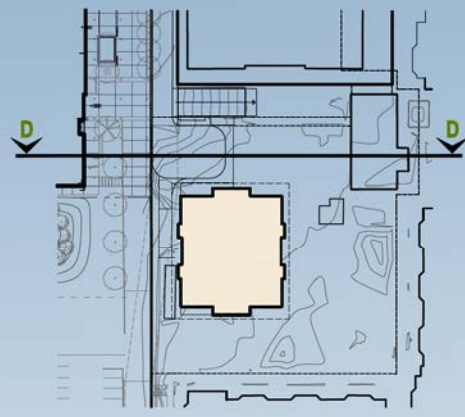


ST. ANDREW'S RENTAL RESIDENCES, UBC  
**1. WEST ELEVATION**

July 7, 2011

Sk-6.01





Keyplan

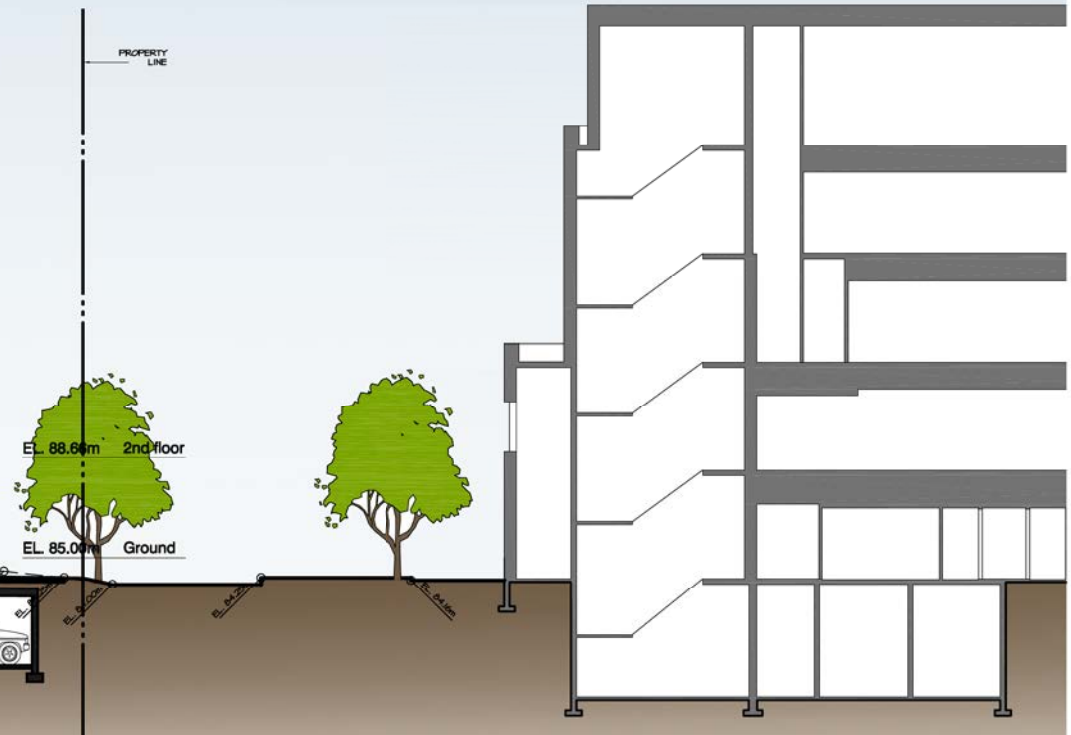
St. Andrew's College  
4 Storey Apartment



EL. 132.07m Elevator Core

EL. 126.15m Roof

George F. Curtis  
Faculty of Law



EL. 88.60m 2nd floor

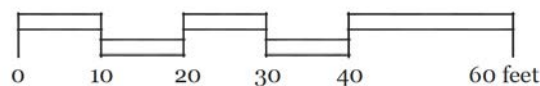
EL. 85.00m Ground

Section D:

2. North Elevation



3/32" scale



ST. ANDREW'S RENTAL RESIDENCES, UBC

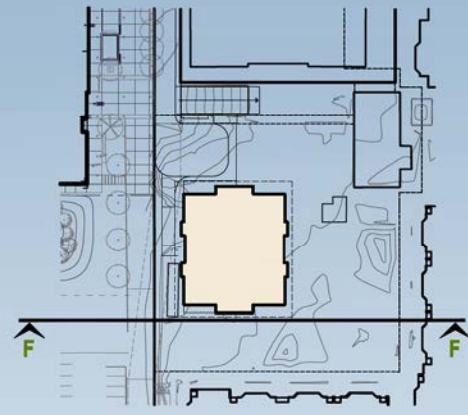
**2. NORTH ELEVATION**

July 7, 2011

Sk-6.02

**CONCERT**  
PROPERTIES LTD





Keyplan

George F. Curtis  
Faculty of Law

Elevator Core EL. 132.07m

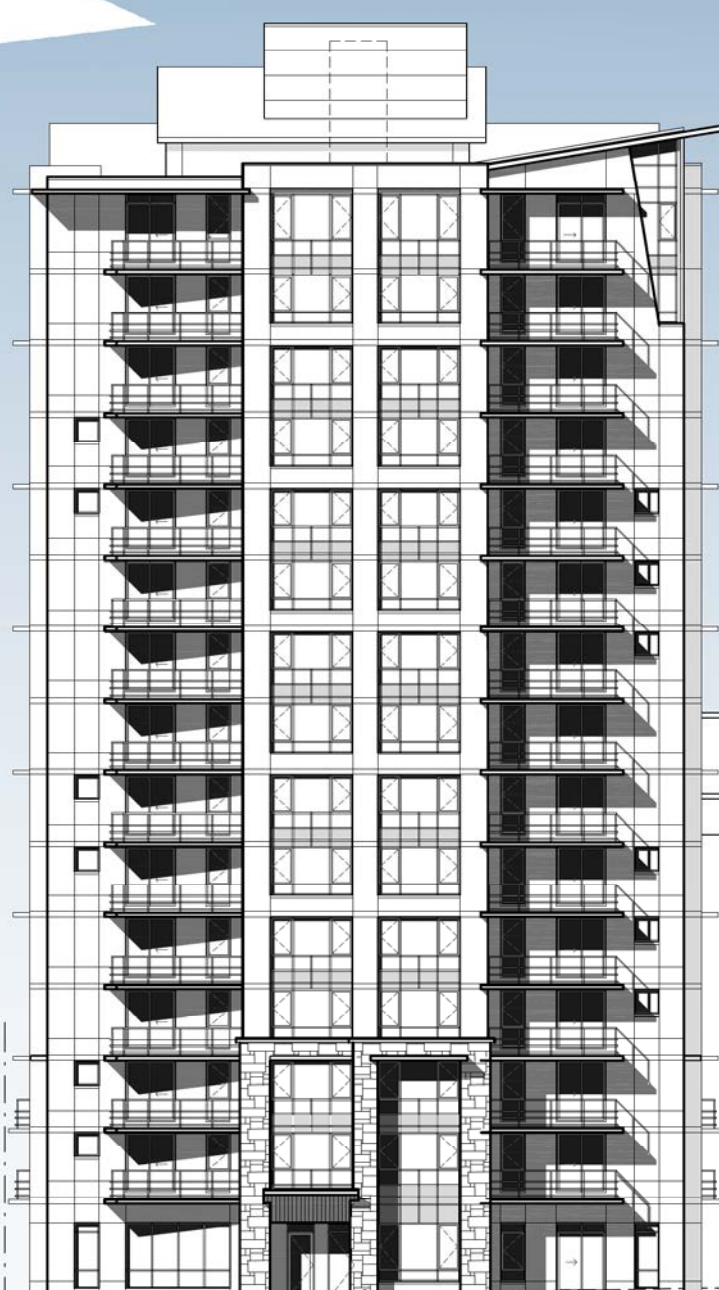
Roof EL. 126.15m

135'-0"

PROPERTY LINE

2nd floor EL. 88.66m

Ground EL. 85.00m



Stirling House (Beyond)

St. Andrew's College  
4 Storey Apartment

Ridge 102.54m

4th

3rd

2nd

1st 85.50m

St. Andrew's  
Hall

Parking 81.50m

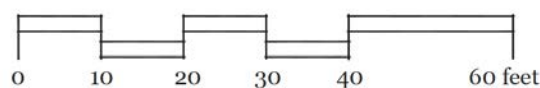
Locker Room

Section F:

3. South Elevation



3/32" scale



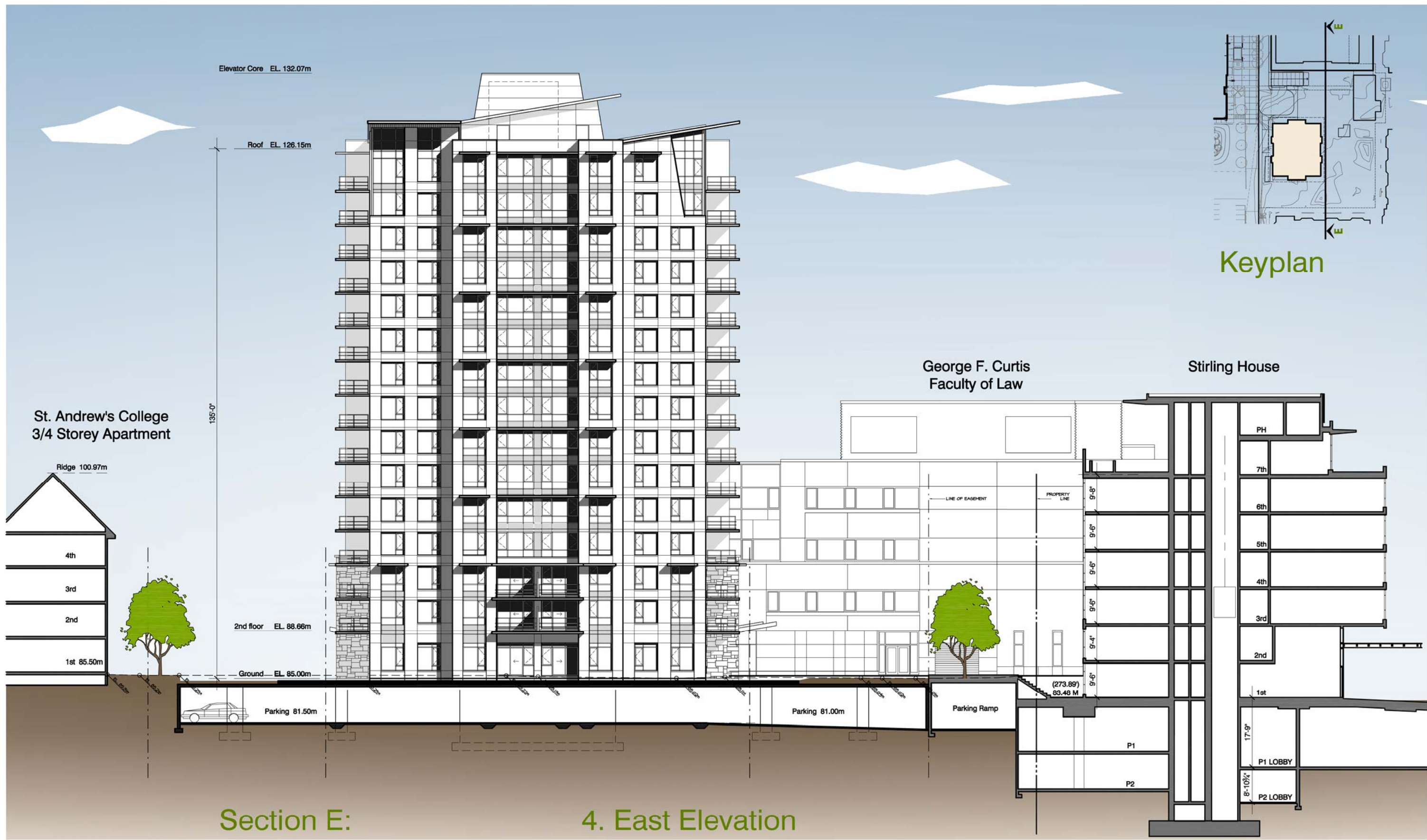
ST. ANDREW'S RENTAL RESIDENCES, UBC

# 3. SOUTH ELEVATION

July 7, 2011

Sk-6.03

**CONCERT**  
PROPERTIES LTD



St. Andrew's College  
3/4 Storey Apartment

Ridge 100.97m

4th

3rd

2nd

1st 85.50m

Elevator Core EL. 132.07m

Roof EL. 126.15m

135'-0"

2nd floor EL. 88.66m

Ground EL. 85.00m

Parking 81.50m

Parking 81.00m

Parking Ramp

(273.89)  
83.48 M

P1

P2

PH

7th

6th

5th

4th

3rd

2nd

1st

17'-9"

8'-10 1/2"

P1 LOBBY

P2 LOBBY

George F. Curtis  
Faculty of Law

Stirling House

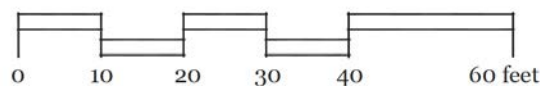
Keyplan

Section E:

4. East Elevation



3/32" scale



ST. ANDREW'S RENTAL RESIDENCES, UBC

**4. EAST ELEVATION**

July 7, 2011

Sk-6.04

**CONCERT**  
PROPERTIES LTD





Fenestration:  
 Starline 9000 series or equal  
 Aluminum window frames in  
 standard silver colour  
 Double Glazing in clear glass c/w  
 Low-E coating & 1/2" aluminum spacers

Spandrel Glass Panels:  
 Starline 9000 series or  
 equal to match fenestration  
 Insulated Glass Panels w/  
 Vitrum 6mm Clear w/#2-2015  
 Clear Green Opaci-coat



Balcony Railings:  
 Aluminum Frames c/w  
 6mm Clear Glass Panels  
 Powder Coated aluminum  
 standard silver to match  
 window frames

Concrete Edges of Balconies &  
 Overhangs:  
 Cast-in-place concrete  
 elastomeric paint finish colour,  
 Benjamin Moore, Platinum Gray, E-71

Exterior Concrete Walls:  
 Cast-in-place concrete  
 elastomeric paint finish colour,  
 Benjamin Moore, Elmira White, HC-84

Soffits:  
 Fire-treated wood soffits  
 Natural wood finish, Sikkens

Stone Veneer:  
 Granite, Same colour as Iona Building,  
 Ashlar coursing pattern



Window Wall Spandrel Glass



Double Glazing in Clear Glass



Aluminum Window Frames



Exterior Concrete Walls

Concrete Edges  
 of Balconies &  
 Overhangs



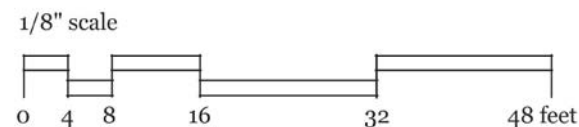
Wood Soffits



Granite Veneer

## Sample Elevation Detail

## Colours & Materials



ST. ANDREW'S RENTAL RESIDENCES, UBC

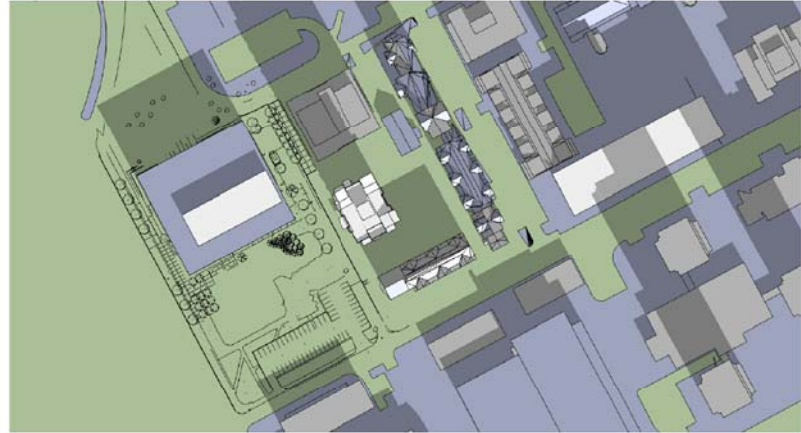
# COLOURS & MATERIALS

July 7, 2011

Sk-8.01

**CONCERT**  
 PROPERTIES LTD





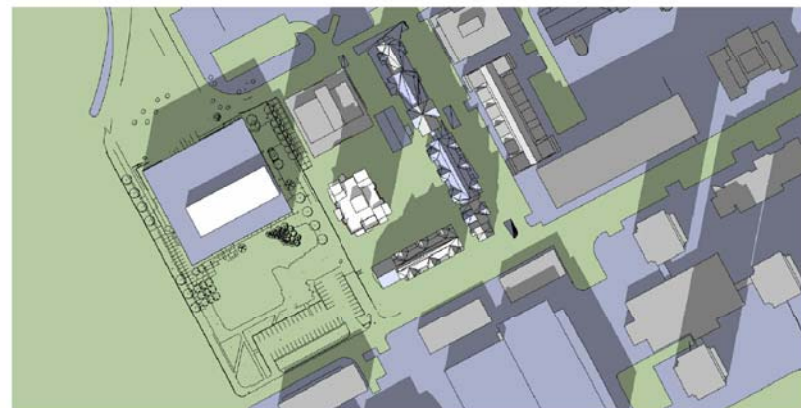
December 21, 9am



March 21, 9am



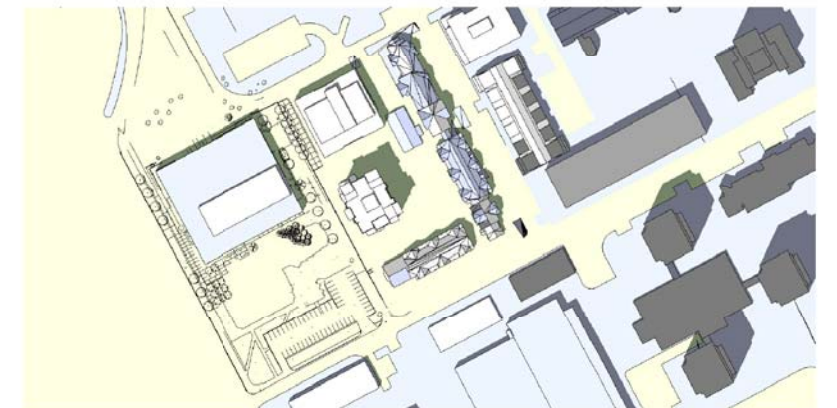
June 21, 9am



December 21, 12pm



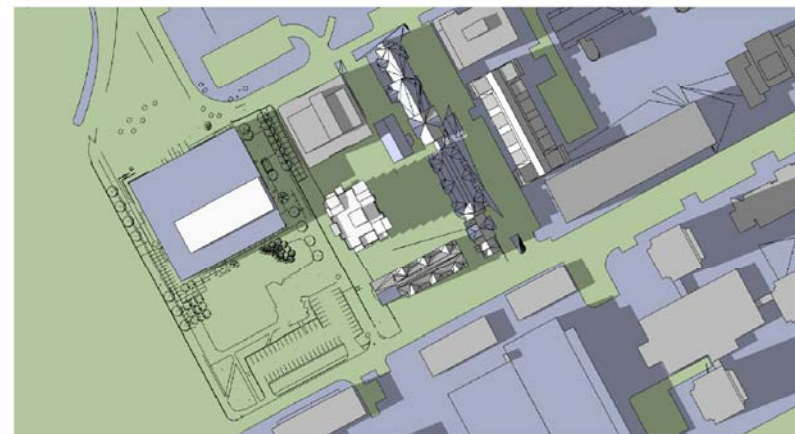
March 21, 12pm



June 21, 12pm



December 21, 3pm



March 21, 3pm



June 21, 3pm



# ST. ANDREW'S RENTAL RESIDENCES, UBC **SHADOW DIAGRAM**

July 7, 2011

Sk-9.01

**CONCERT**  
PROPERTIES LTD