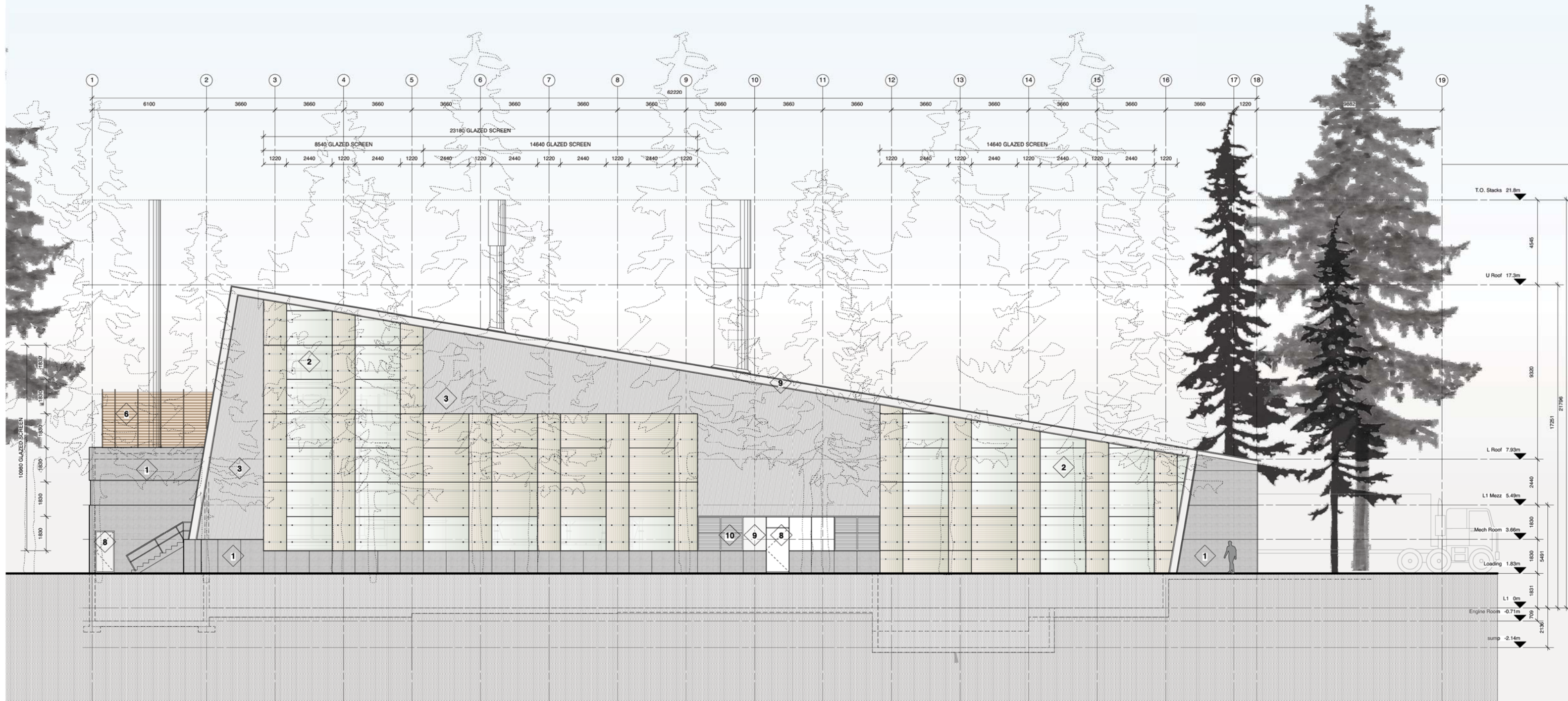


**EXTERIOR MATERIALS LEGEND**

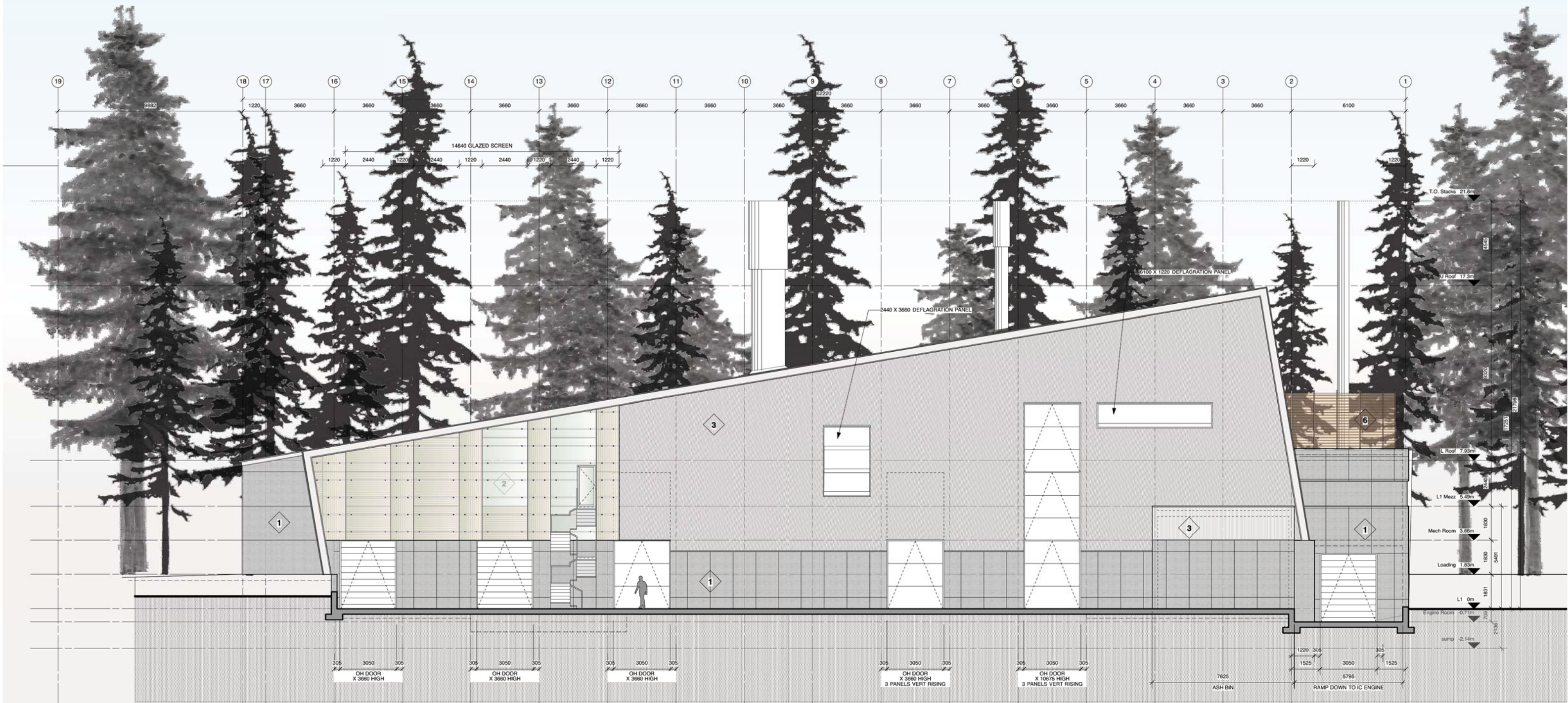
- |  |  |
|--|--|
| 1 concrete   | 6 cedar slat screen  |
| 2 structural glazed panel w/ silicon joints        | 7 aluminum door c/w tempered glazing in curtain wall framing           |
| 3 corrugated metal cladding                        | 8 stl door in pressed stl frame door & frame to have galvanized finish |
| 4 prefinished standing seam aluminum roof cladding | 9 prefinished metal panel  |
| 5 galvanized stl guardrail                         | 10 mechanical louvre   |





**EXTERIOR MATERIALS LEGEND**

- |  |  |
|--|--|
| 1 concrete   | 6 cedar slat screen  |
| 2 structural glazed panel w/ silicon joints        | 7 aluminum door c/w tempered glazing in curtain wall framing           |
| 3 corrugated metal cladding                        | 8 stl door in pressed stl frame door & frame to have galvanized finish |
| 4 prefinished standing seam aluminum roof cladding | 9 prefinished metal panel  |
| 5 galvanized stl guardrail                         | 10 mechanical louvre   |





**EXTERIOR MATERIALS LEGEND**

- |  |  |
|--|--|
| 1 concrete   | 6 cedar slat screen  |
| 2 structural glazed panel w/ silicon joints        | 7 aluminum door c/w tempered glazing in curtain wall framing           |
| 3 corrugated metal cladding                        | 8 stl door in pressed stl frame door & frame to have galvanized finish |
| 4 prefinished standing seam aluminum roof cladding | 9 prefinished metal panel  |
| 5 galvanized stl guardrail                         | 10 mechanical louvre   |

