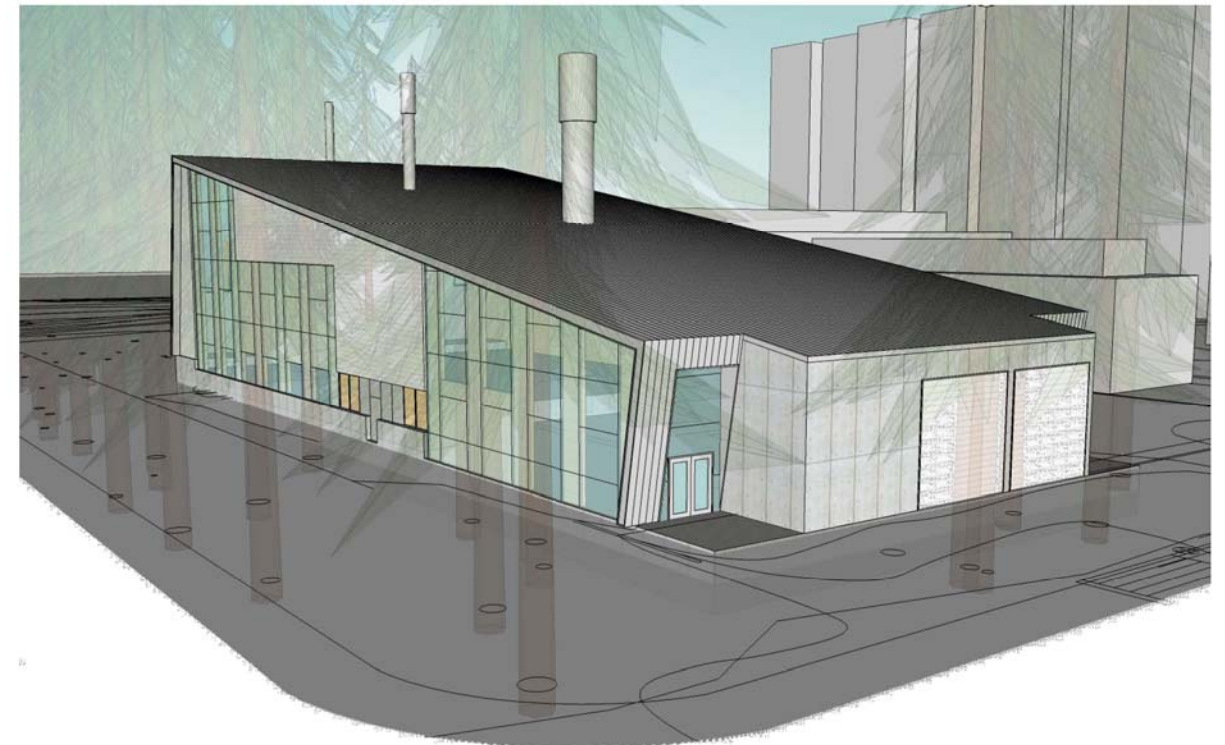


UBC Bioenergy Research & Demonstration Project

University of British Columbia | Nexterra | FP Innovations

DEVELOPMENT PERMIT SUBMISSION

DESCRIPTION	OWNER	CONSULTANTS	BUILDING CODE INFORMATION	DRAWING INDEX
LEGAL DESCRIPTION Part of Lot 1, DL 3044 / DL 4805 Plan 9301	UBC	PRIME CONSULTANT McFarland Marceau Architects 303 - 2930 Arbutus Street Vancouver, BC V6J 3Y9 ph: 604 733 1115 fc: 604 733 9345	GEOTECHNICAL ENGINEERING Trow Associates Inc. 7025 Greenwood Street Burnaby, BC ph: 604.874.1245 fc: 604.874.2358	A000 COVER PAGE A000.1 CONTEXT PHOTOS A000.2 SHADOW STUDY A000.3 RENDERING
CIVIC ADDRESS between 2259 - 2269 Lower Mall UBC Campus, Vancouver, BC		STRUCTURAL ENGINEERING Equilibrium Consultants 202 - 388 West 8th Avenue Vancouver, BC V5V 3X2 ph: 604 730 1422 fc: 604 738 8191	ENVIRONMENTAL CONSULTANT PHH ARC Environments Suite 406-13251 Delf Place Richmond, BC V6V 2A2 ph: 604 873.8599 fc: 604.873.5956	A001 CONTEXT PLAN A002 DEMOLITION SITE PLAN A003 PROPOSED SITE PLAN A004 EXISTING SITE PLAN & AREA ALLOCATIONS
SITE WORK AREA 7935 sq m		MECHANICAL ENGINEERING Stantec Consulting 1100 111 Dunsmuir Street Vancouver, BC V6B 6A3 ph: 604 696 8373 fc: 604 696 8100	BUILDING CODE CONSULTANT LMDG Building Code Consultant Ltd. 4th Floor 780 Beatty Street Vancouver, BC ph: 604.682.7146 fc: 604.682.7149	A101 L0 FOUNDATION PLAN A102 L1 PLAN A103 L1 MEZZANINE PLAN A104 UR UPPER ROOF PLAN
BUILDING HEIGHT 1 Storey		ELECTRICAL ENGINEERING Stantec Consulting 1100 111 Dunsmuir Street Vancouver, BC V6B 6A3 ph: 604 696 8373 fc: 604 696 8100	BUILDING ENVELOPE SPECIALIST Morrison Hershfield Limited Suite 610, 3585 Gravelley Street Vancouver, BC V6K 5J5 ph: 604.454.0402 fc: 604.454.0403	A201 SOUTH ELEVATION A202 NORTH ELEVATION A203 EAST & WEST ELEVATIONS
BUILDING AREA Gross Area: 1886 sq m Footprint: 1500 sq m		CIVIL ENGINEERING Core Group Consultants 320 8988 Fraserston Court Burnaby, BC V5J 5H8 ph: 604 299 0605 fc: 604 299 0629	LANDSCAPE ARCHITECTURE Perry & Associates Suite 200 1558 W6th Ave Vancouver, BC V6J 1R2 ph: 604.738.4118 fc: 604.738.4116	A301 SECTION L1.0 TREE REMOVAL / TREE RETENTION L1.1 LANDSCAPE PLAN
PARKING 1 Car Stalls (Includes One Accessible Stall)			CONSTRUCTION DESCRIPTION Combustible: BCBC article 3.2.2.70 Major Components: Concrete Slab on Grade Suspended upper mezzanine Cross Laminated Timber Panel walls and roof deck Metal Roof Metal Cladding with Glazing sections	A301 SECTION L1.0 TREE REMOVAL / TREE RETENTION L1.1 LANDSCAPE PLAN
			MAJOR OCCUPANCY Group F, Division 2	A301 SECTION L1.0 TREE REMOVAL / TREE RETENTION L1.1 LANDSCAPE PLAN
			FIRE PROTECTION & ACCESS Streets Facing: two Annunciator at Principal Entrance Fire Engine Access at 15m of Principal Entrance Siamese Connection near Principal Entrance Hydrants at southwest and northeast corners Wet Sprinkler System Throughout Building Overhangs over 1200 Sprinklered	A301 SECTION L1.0 TREE REMOVAL / TREE RETENTION L1.1 LANDSCAPE PLAN
			HEALTH & ACCESSIBILITY Unisex WC Fixtures: 1	A301 SECTION L1.0 TREE REMOVAL / TREE RETENTION L1.1 LANDSCAPE PLAN





VIEW LOOKING SOUTH TO TOTEM PARK ON AGRONOMY ROAD



VIEW LOOKING WEST ALONG AGRONOMY ROAD



LANDSCAPE OPERATIONS PARKING AREA WITH LOWER MALL HEADER HOUSE BEYOND



VIEW LOOKING AT EXISTING RESEARCH ANNEX 8 AND AGRONOMY ROAD



VIEW LOOKING NORTH FROM AGRONOMY ROAD (SOUTH ELEVATION)



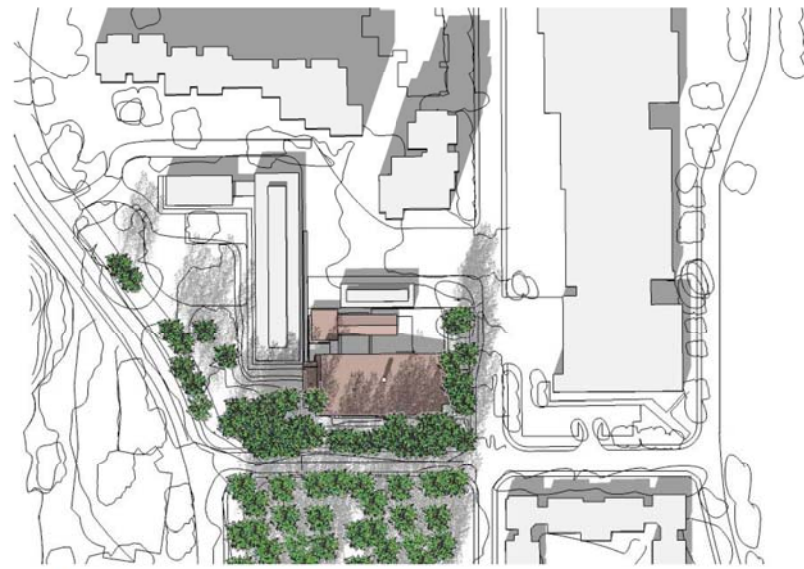
EXISTING SITE ACCESS ON LOWER MALL WITH GREENHOUSES AND LOWER MALL RESEARCH STATION BEYOND



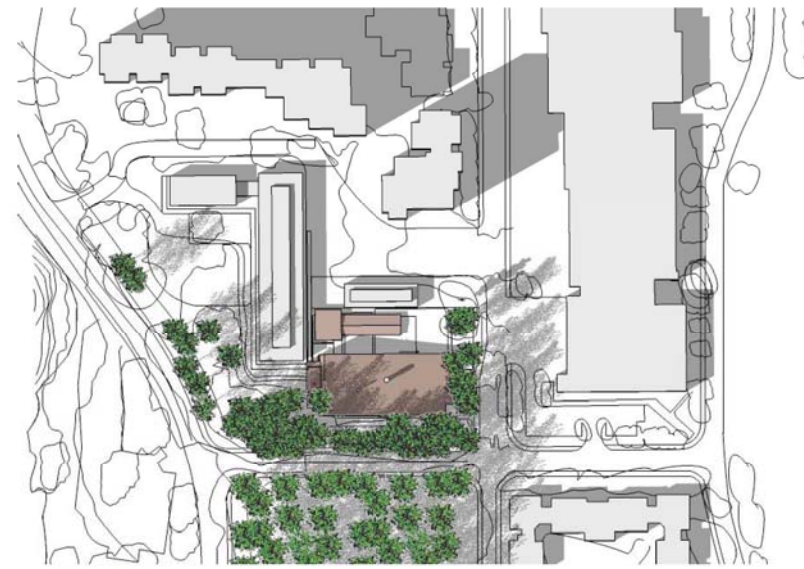
VIEW LOOKING EAST. EXISTING BUILDINGS, UNIVERSITY SERVICES AND RITSUMEIKAN UBC HOUSE



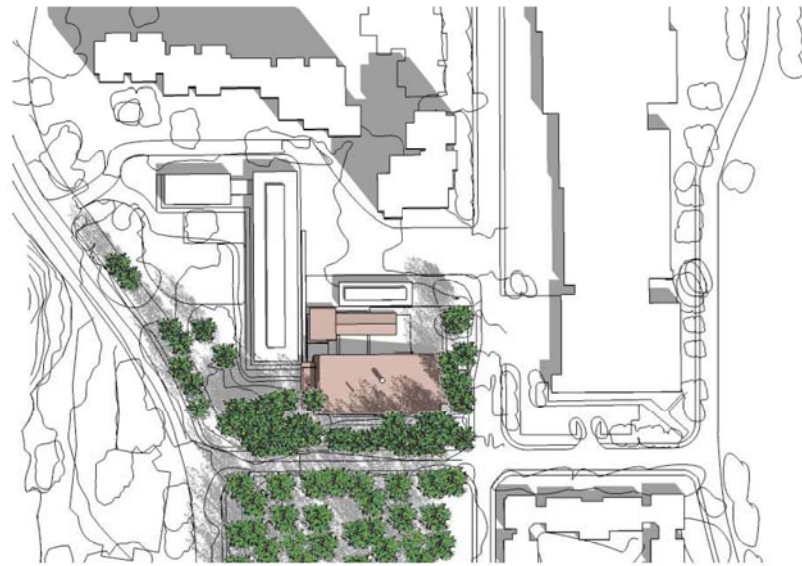
MARCH 21 - 10:00AM



MARCH 21 - 12:00PM



MARCH 21 - 2:00PM



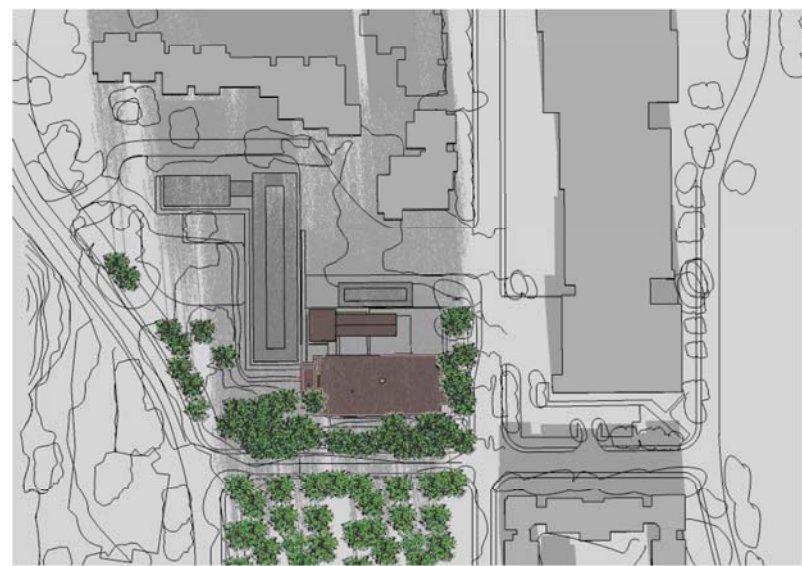
JUNE 21 - 10:00AM



JUNE 21 - 12:00PM



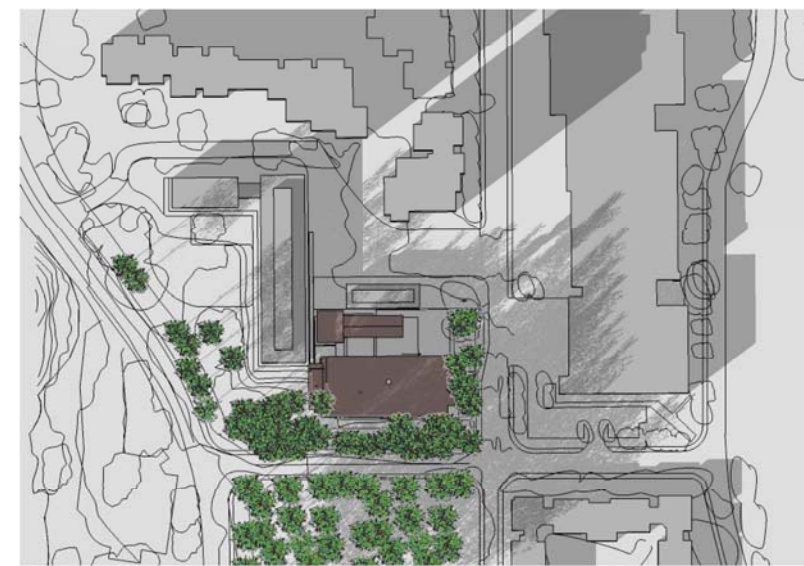
JUNE 21 - 2:00PM



DECEMBER 21 - 10:00AM



DECEMBER 21 - 12:00PM



DECEMBER 21 - 2:00PM



