

# Site and Landscape Architecture

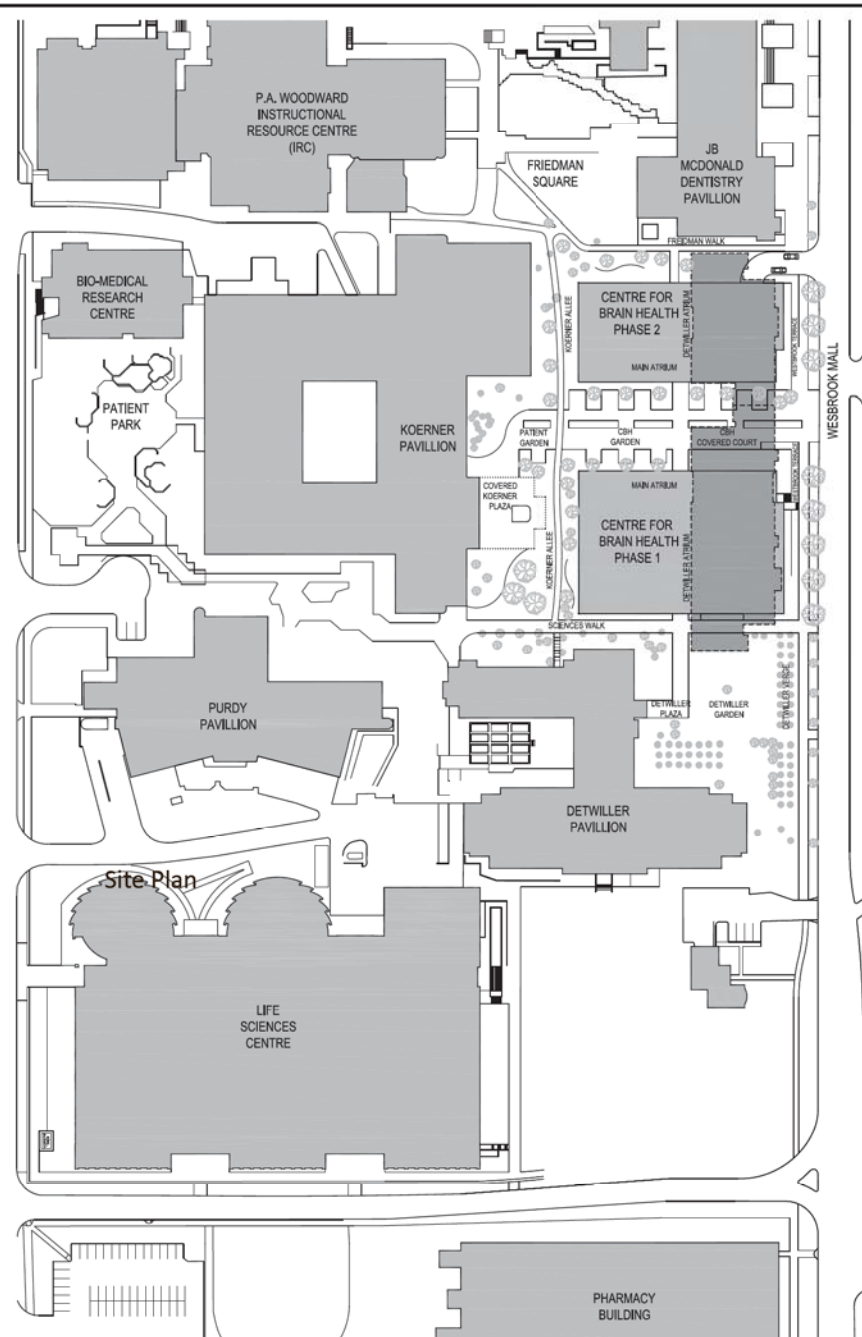
## Landscape Rationale

The landscape design for the CBH supports the visions and principles outlined in the Public Realm Plan (2009) as well as supporting the functions of the building and it's users.

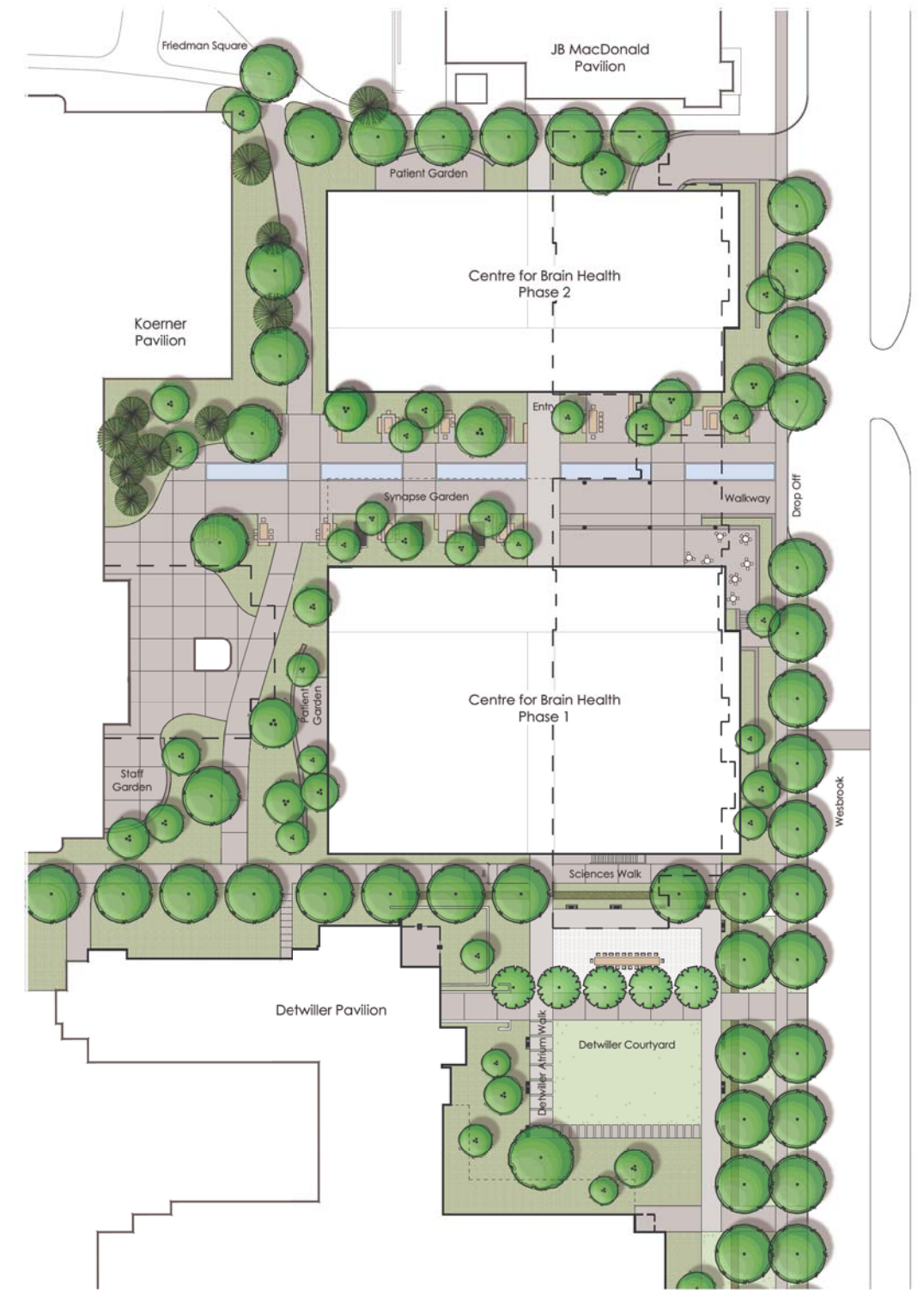
The main outdoor area, the Synapse Garden, is programmed to be a place of informal learning, exchange of ideas and interaction between faculty, staff, students and patients. This garden plays off the idea of synapse and creates a strong sense of place closely tied to the function of the building. A therapeutic rainwater channel that re-circulates irrigation water acts as a way finding element to the entry to Koerner. Seating/exchange nodes are located adjacent to walkways at each building.

The Synapse Garden is linked via the interior atrium to the Detwiller Courtyard. Renovations to this courtyard are proposed to open it up to more active uses and promote exchange between the Centre for Brain Health and the Psychiatry Department at the Detwiller Pavilion.

The major pedestrian walkway between the Centre for Brain Health and Detwiller, Sciences Walk, has been realigned for clearer sightlines, while creating strong visual links to the interior function of the Centre for Brain Health. This walkway has also been re-graded to provide barrier free access to Wesbrook Mall (currently there are stairs).



Site Development Plan - Future Phase



Landscape Architecture Plan - Future Phase



**Landscape Rationale (continued)**

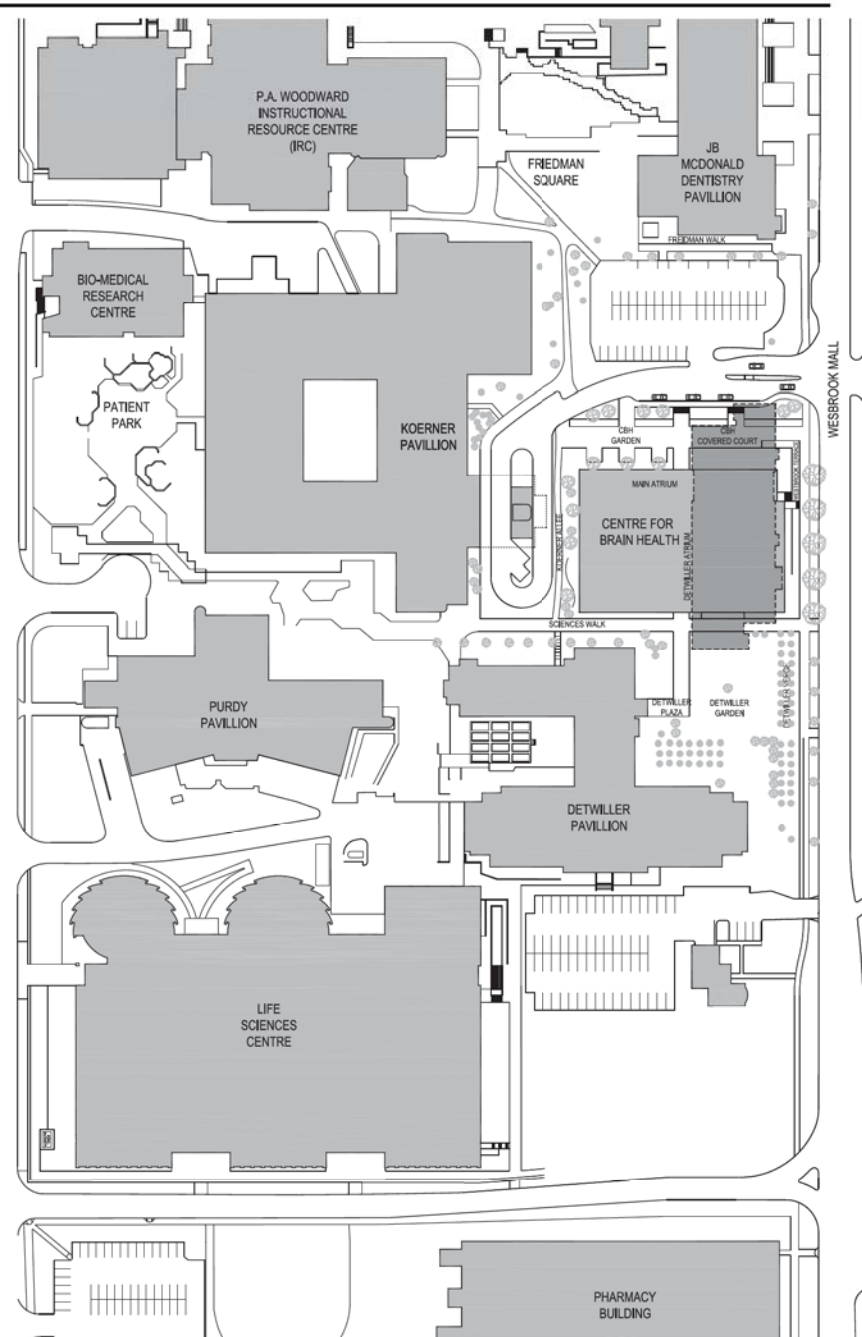
Several smaller scaled, more intimate spaces designed to nurture the physical and mental health needs of staff and patients. Patient gardens adjacent to phase 1 and 2 will provide outdoor physiotherapy opportunities and respite for research patients. A staff garden adjacent to the southeast corner of the Koerner Pavilion will provide a private outdoor area for faculty and staff.

**Sustainability/LEED**

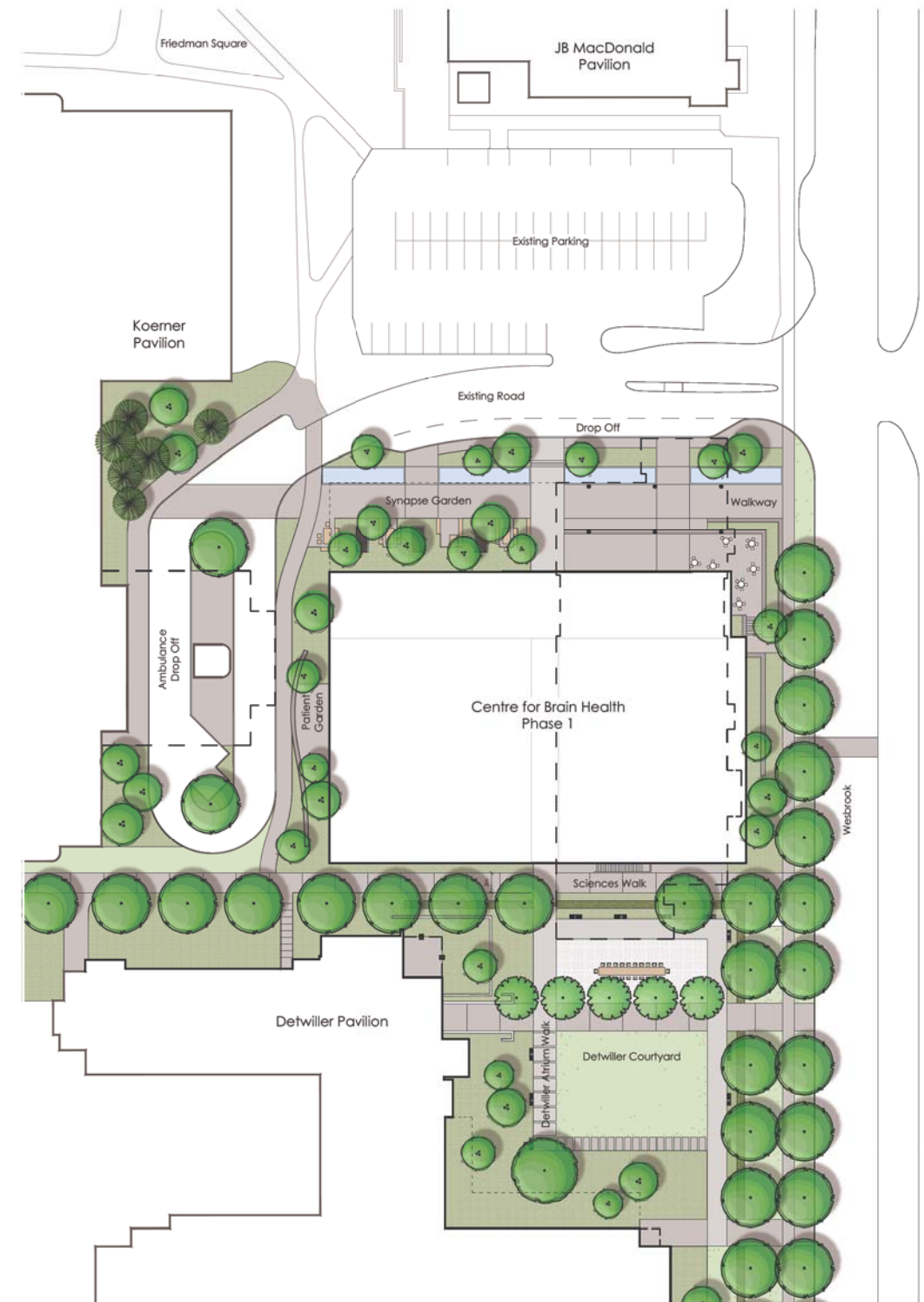
The landscape design supports the sustainability principles/functions of the building. Water conservation, rain-water reuse, heat island, indigenous plants, green roofs and permeable surfacing will be pursued to achieve LEED Gold.

**Materials**

The proposed materials palette will tie into that of the public realm on campus. Durability of materials is important when designing for low lifecycle and maintenance costs. The paving is predominantly cast in place concrete with some accents of unit concrete pavers. Ipe wood benches, tables and chairs are proposed in the Synapse Garden, while black metal site furniture is proposed elsewhere.



Site Development Plan - Initial Phase



Landscape Architecture Plan - Initial Phase