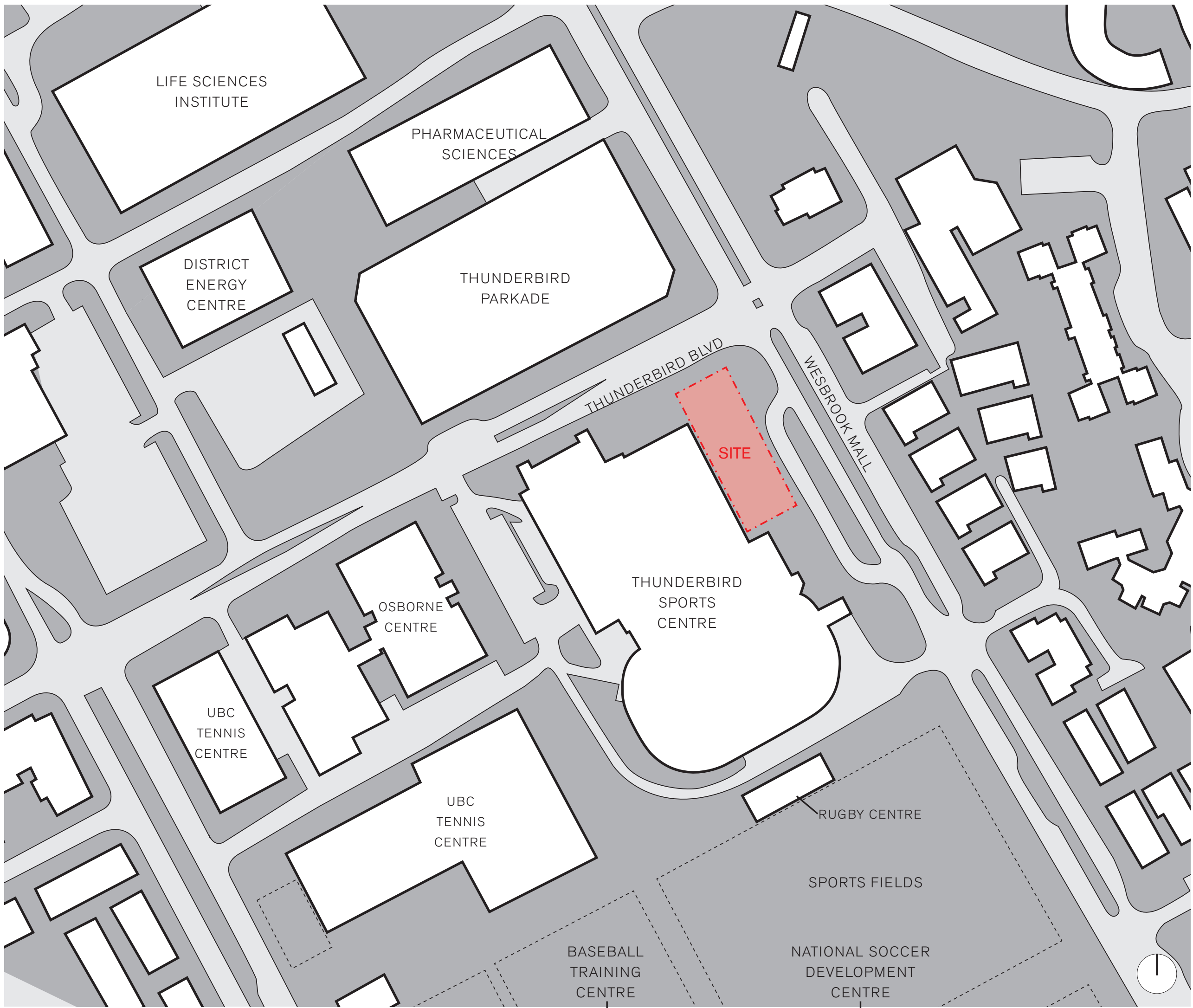
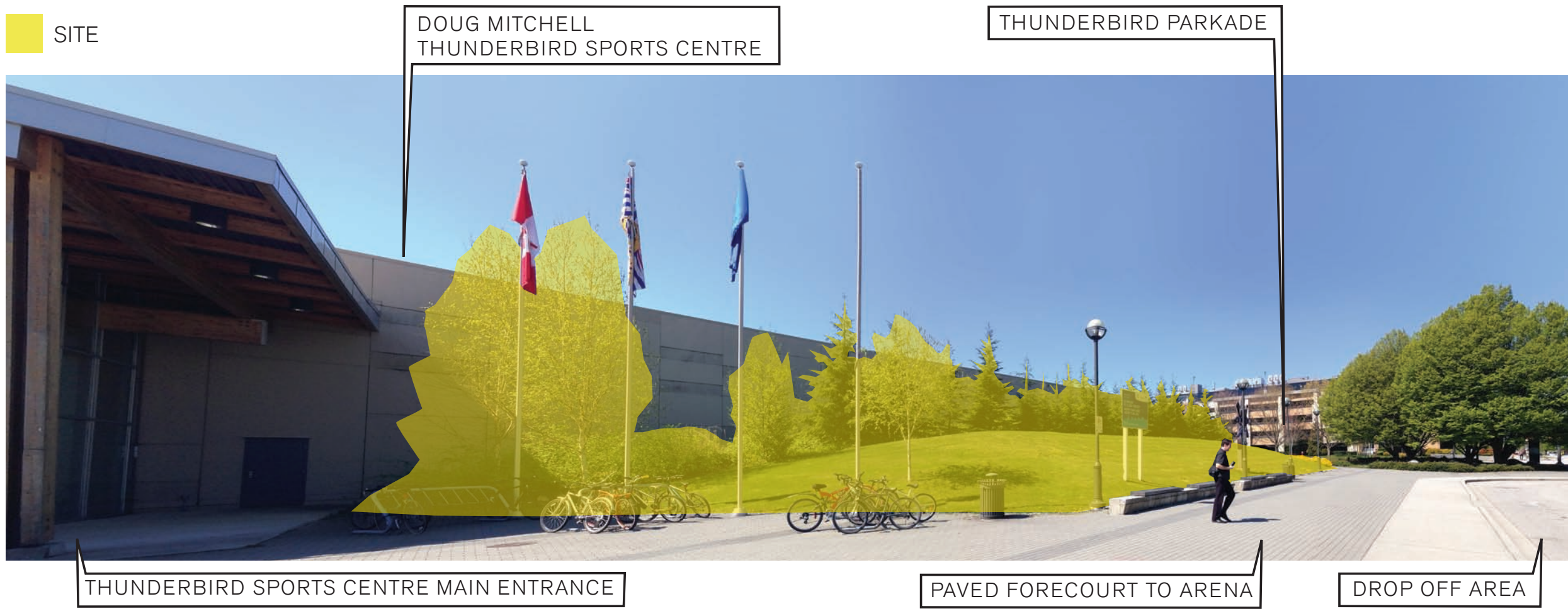




CAMPUS CONTEXT



CONTEXT + SITE



EXISTING SITE FROM SOUTH-EAST (DROP OFF AND PLAZA)



VIEW FROM NORTH-EAST (WESBROOK MALL)



VIEW FROM NORTH-WEST (THUNDERBIRD BOULEVARD)



VIEW FROM NORTH-EAST (THUNDERBIRD BOULEVARD)

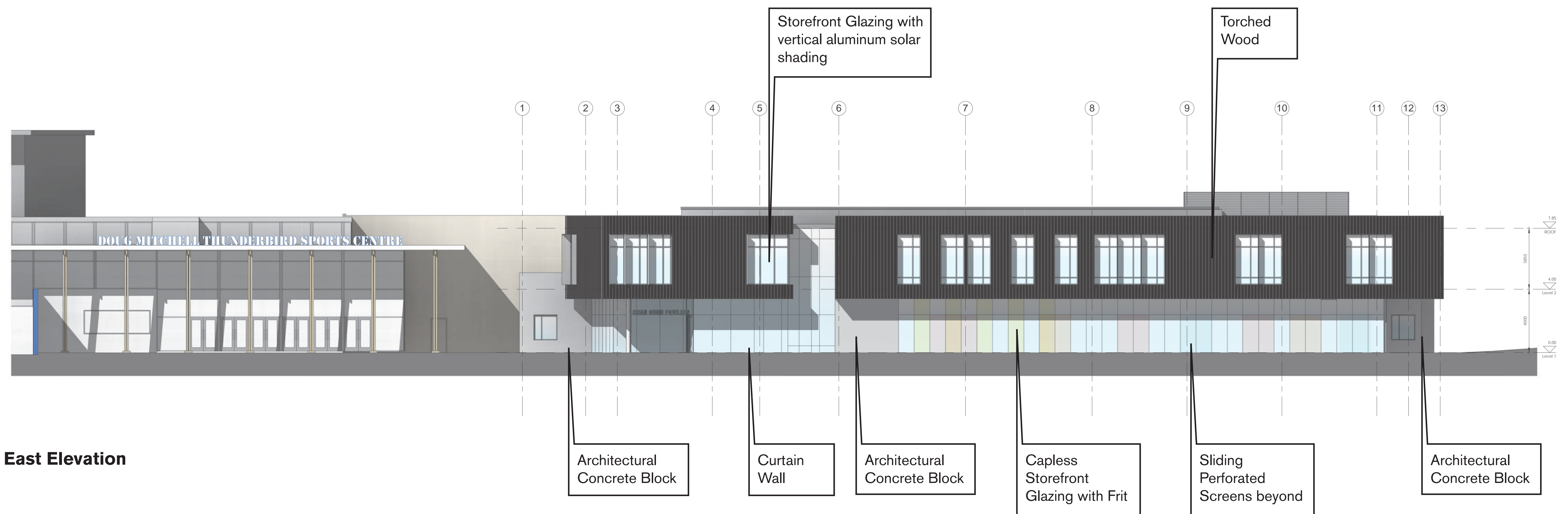
SITE CONTEXT

UBC Sports Medicine Facility
Chan Gunn Pavilion

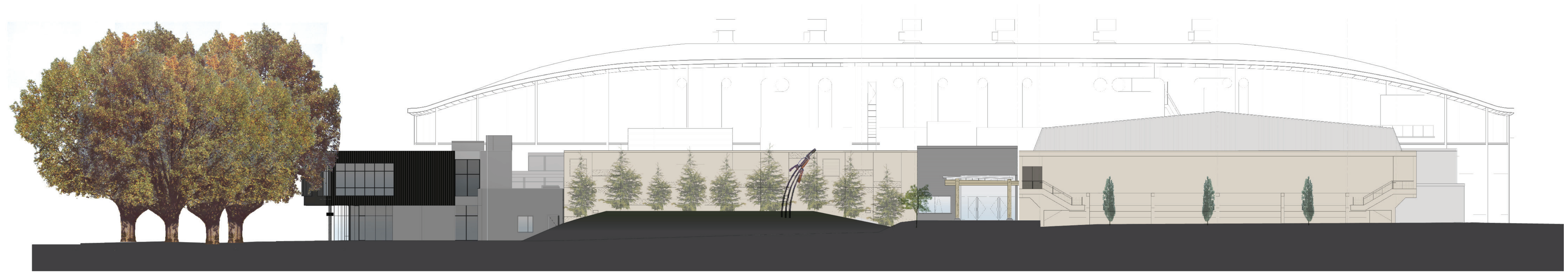




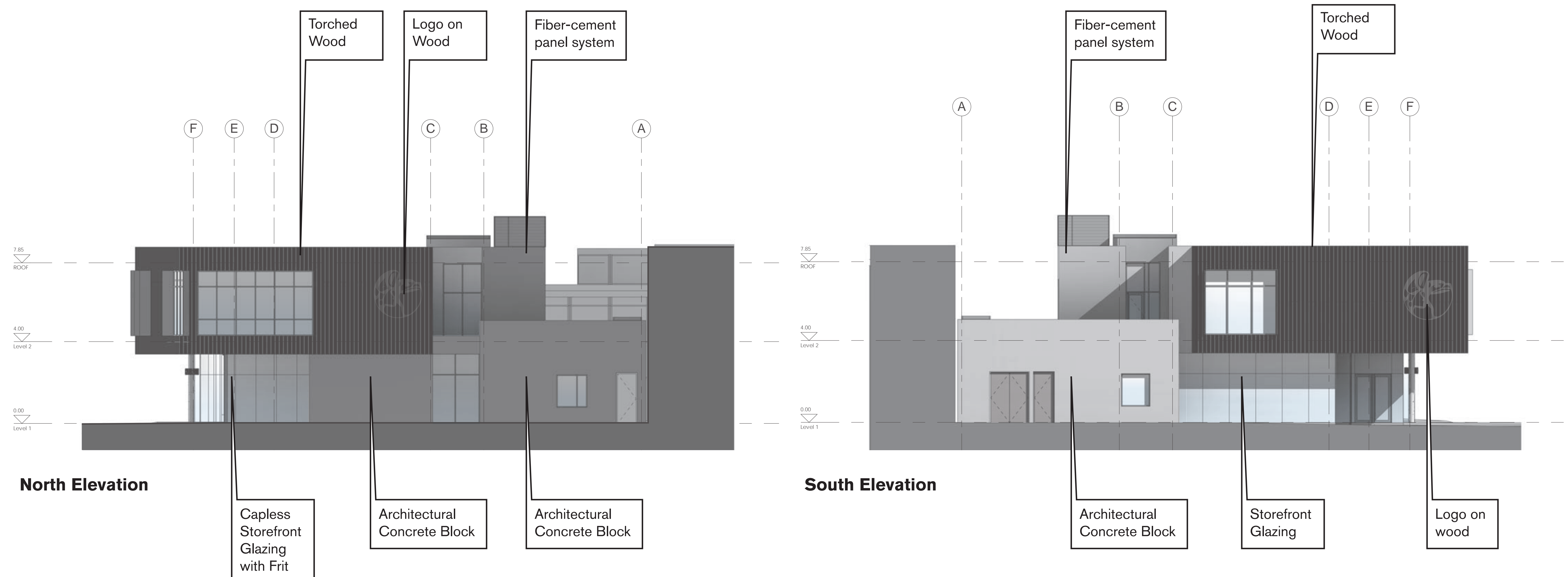
East Elevation, including context

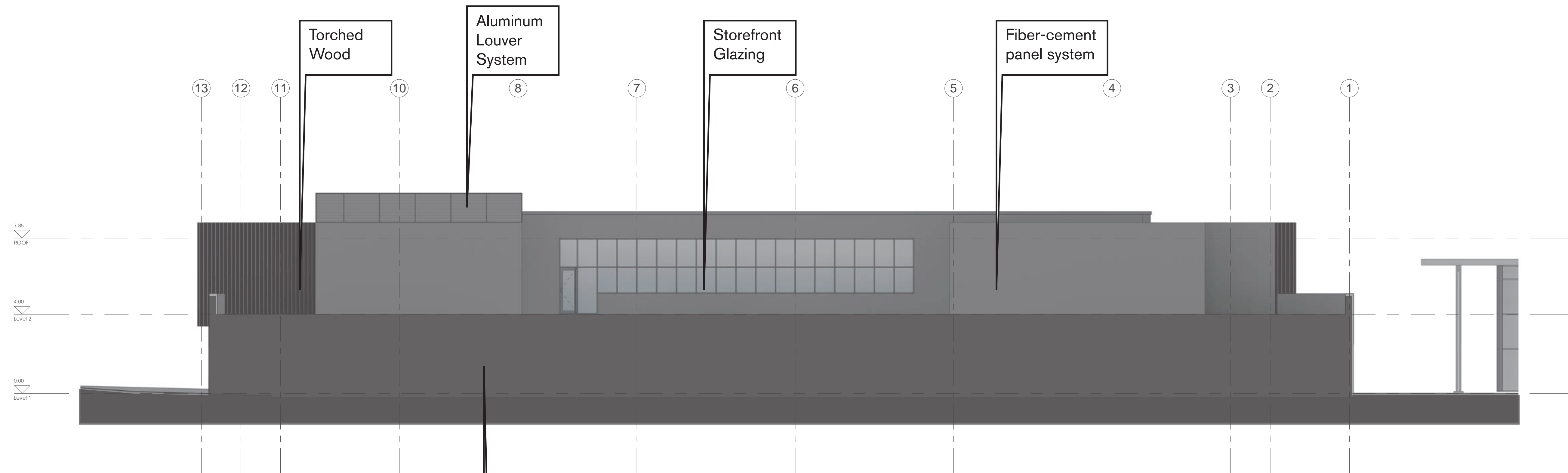


East Elevation



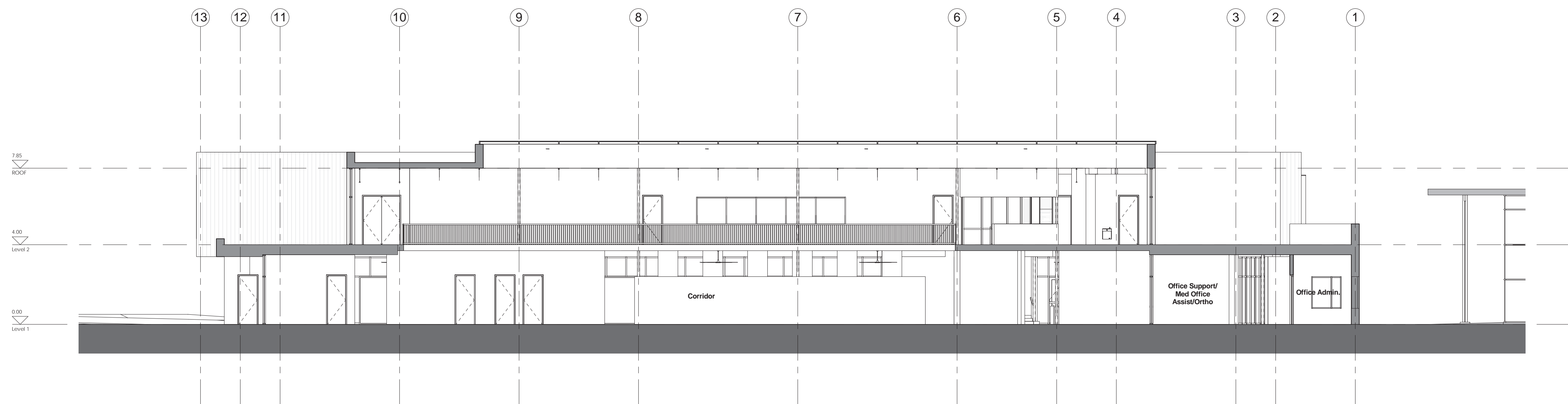
North Elevation, including context



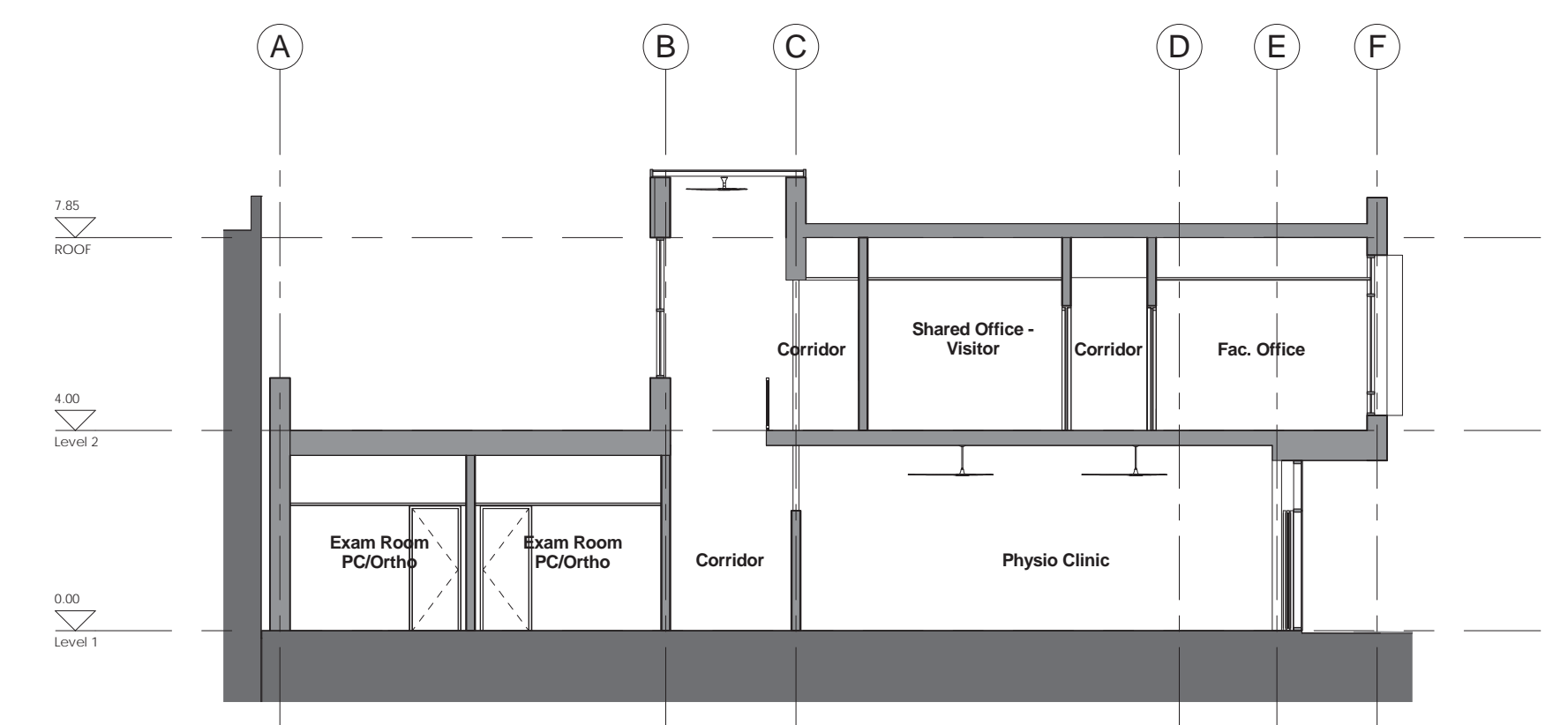


West Elevation

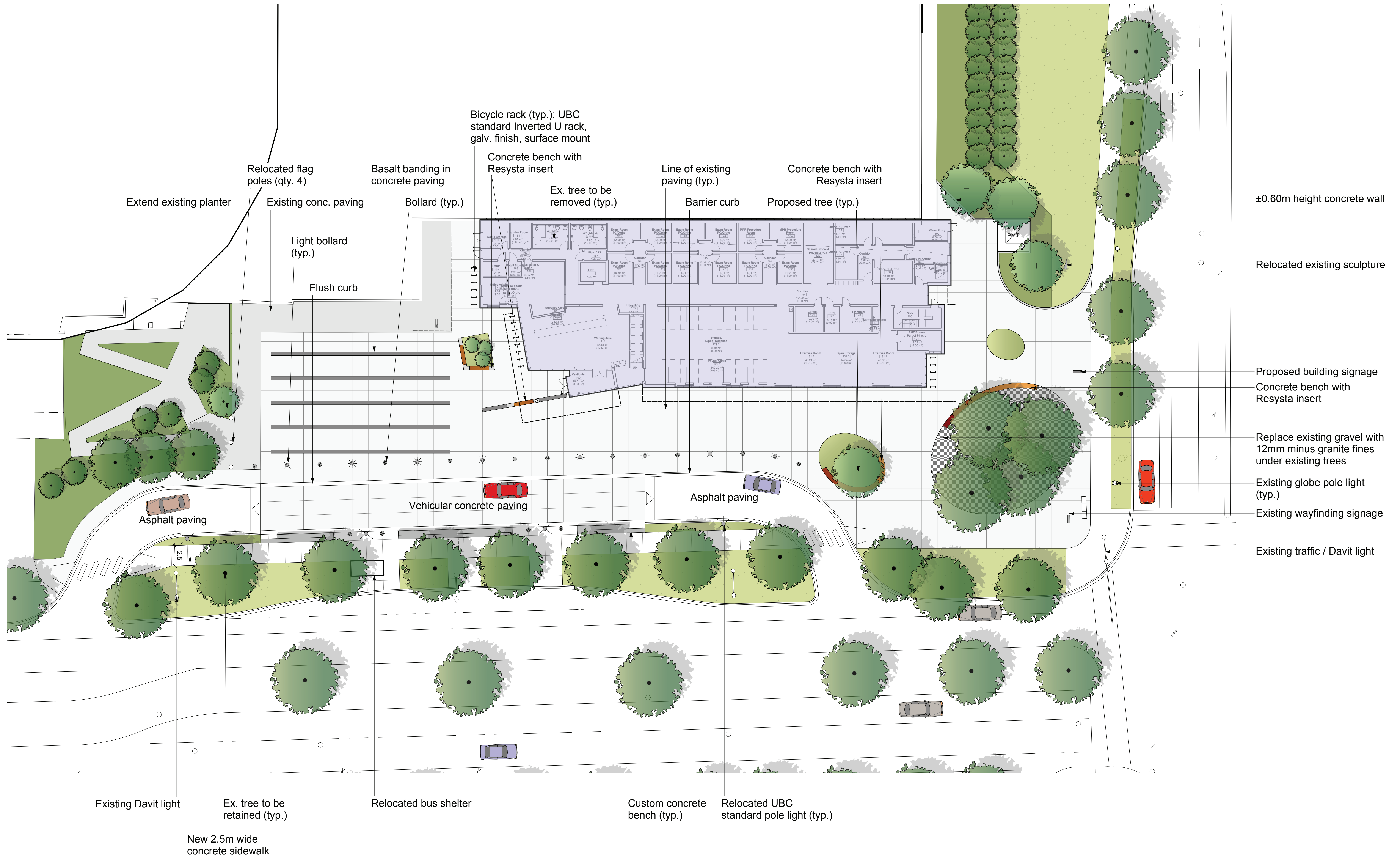
Concrete Block
(against adjacent building)



Longitudinal Section through Corridor



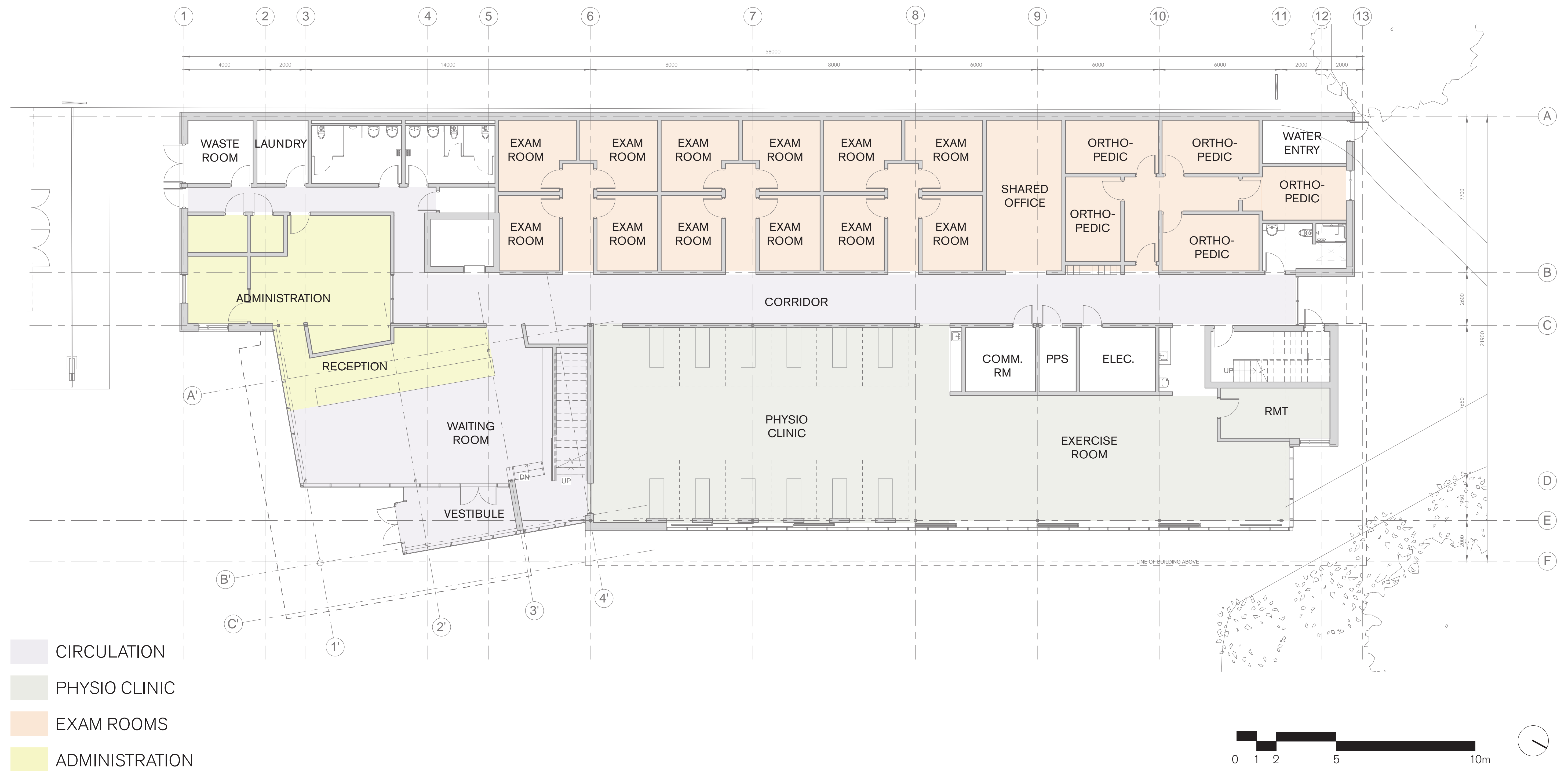
Cross Section through Physio Clinic



LANDSCAPE PLAN

UBC Sports Medicine Facility
Chan Gunn Pavilion

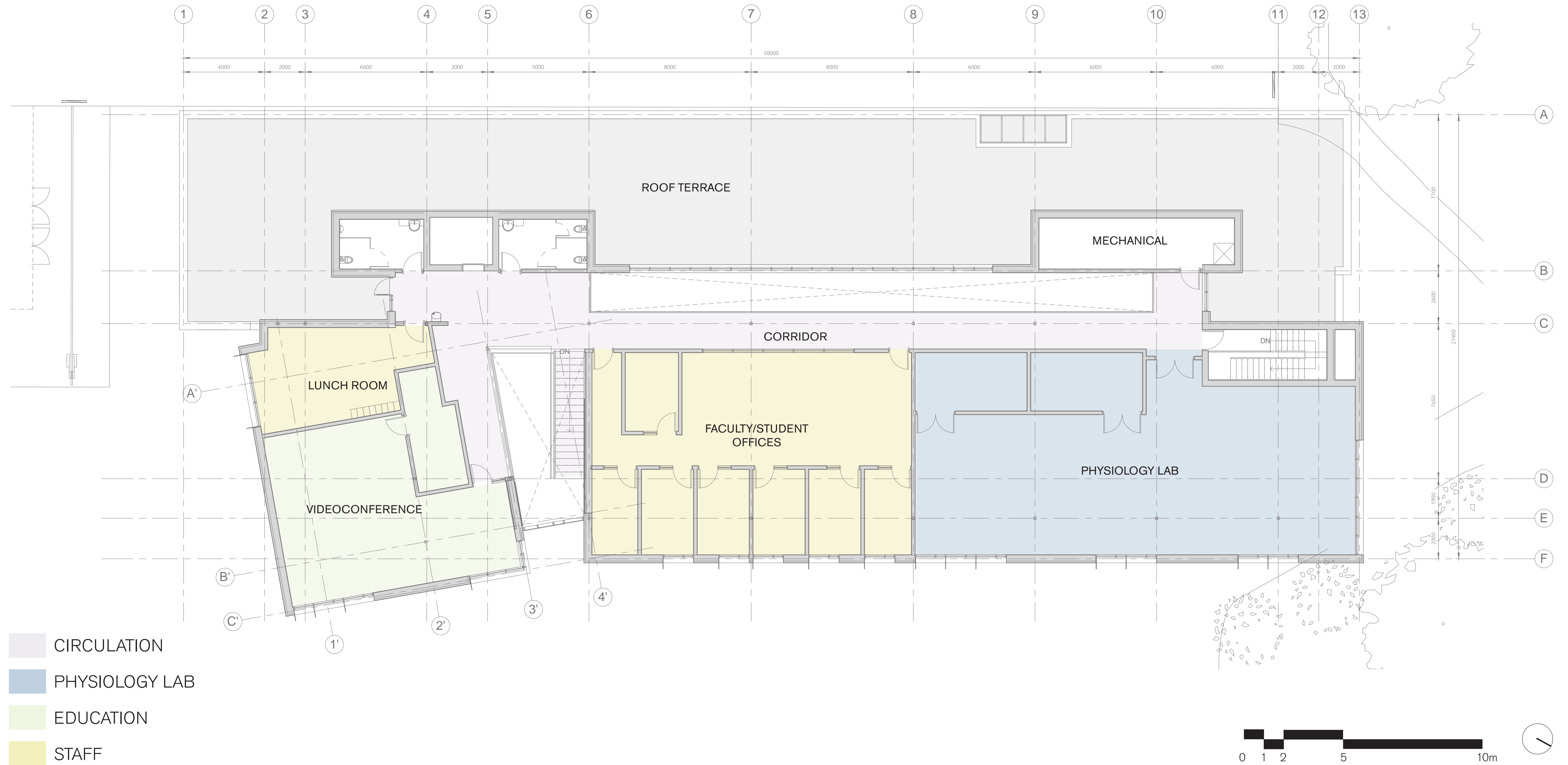




GROUND FLOOR PLAN

UBC Sports Medicine Facility
Chan Gunn Pavilion





SECOND FLOOR PLAN

UBC Sports Medicine Facility
Chan Gunn Pavilion





AERIAL 3D VIEW FROM SOUTHEAST



AERIAL 3D VIEW FROM NORTHEAST



AERIAL 3D VIEW FROM SOUTHEAST



3D VIEW FROM PLAZA



3D VIEW FROM NORTHEAST



3D VIEW FROM THUNDERBIRD PARKADE

RENDERINGS

UBC Sports Medicine Facility
Chan Gunn Pavilion

