

UBC ALUMNI CENTRE

DEVELOPMENT PERMIT RESUBMISSION

DECEMBER 2012

KUWABARA PAYNE MCKENNA BLUMBERG |
HUGHES CONDON MARLER ARCHITECTS
Architects in Joint Venture

3rd Floor, 322 King Street West
Toronto, Ontario
M5V 1J2 Canada
T: 416.977.5104
F: 416.598.9840

Suite 300 - 1508 West 2nd Avenue
Vancouver, British Columbia
V6J 1H2 Canada
T: 604.732.6620
F: 604.732.6695

University of British Columbia
6488 University Boulevard
VANCOUVER, BC

OWNER
UBC Properties Trust
101-555 Great Northern Way
Vancouver, BC V5T 1E2
T: 604.731.3103
F: 604.731.2103

CONSTRUCTION MANAGER
Synkra Construction
302-3680 East Hastings Street
Vancouver, BC V5K 2A9
T: 604.298.3303
ken.seidel@synkraconstruction.com

CONSULTANTS

ARCHITECTURAL
Architects in Joint Venture
Kuwabara Payne McKenna Blumberg Architects
3rd Floor, 322 King Street West
Toronto, ON M5V 1J2
T: 416.977.5104
bweber@kpmbarchitects.com

Hughes Condon Marler Architects
300 - 1508 West 2nd Avenue
Vancouver, BC V6J 1H2
T: 604.732.6620
dphilppot@hcma.ca

STRUCTURAL
Glotman Simpson
1661 West 5th Avenue
Vancouver, BC V6J 1N5
T: 604.484.2280
mokeeffe@glotmansimpson.com

MECHANICAL
MMM Group
700-1045 Howe Street
Vancouver, BC V6B 2A9
T: 604.688.8671
ikers@mmm.ca

ELECTRICAL
Stantec Consulting
1100-111 Dunsmuir Street
Vancouver, BC V6B 6A3
T: 604.696.8000
nigel.hodgson@stantec.com

CIVIL
Kamps Engineering
79 Cheritan Avenue
Toronto, ON M4R 1S7
T: 604.682.2020
kamps@rogers.com

SPECIFICATIONS
Keyword Specifications Inc
3537 - 5th Avenue West
Vancouver, BC V6R 1S1
T: 604.676.8113
kellys@keywordspecs.com

CODE
LMDG Consultants
4th Floor, 780 Beatty Street
Vancouver, BC V6B 2M1
T: 604.682.7146
edomingo@lmdg.com

GEOTECHNICAL
Trow
7025 Greenwood Street
Burnaby, BC
T: 604.874.1245
don.sargent@trow.com

LANDSCAPE
Phillips Farevaag Smalenberg
2327 Yew Street
Vancouver, BC V6K 3H1
T: 604.736.5168
cphillips@pfs.bc.ca

ENVIRONMENTAL
ACM Environmental
217 - 2323 Quebec Street
Vancouver, BC V5T 4S7
T: 604.873.8599
F: 604.873.5956

ELEVATOR
Vertech Elevator Services Inc.
723 - 602 West Hastings Street
Vancouver, BC V6B 1P2
T: 604.647.4900
F: 604.647.4908

WASTE MANAGEMENT/TRAFFIC
Brunt and Associates
1812-1177 West Hastings Street
Vancouver, BC V6E 2K3
T: 604.685.6427
pjoyce@bunteng.com



DRAWINGS

0.00 NOTES/ASSEMBLIES

A0.01 PROJECT STATISTICS, CONTEXT PLAN &
LEGENDS

1.00 SITE

A1.01 SITE PLAN

2.00 PLANS

A2.01 LOWER LEVEL PLAN

A2.02 LEVEL 1 PLAN

A2.04 LEVEL 3 PLAN

A2.05 ROOF PLAN

3.00 EXTERIOR ELEVATIONS

A3.01 NORTH ELEVATIONS

A3.02 EAST ELEVATIONS

A3.03 SOUTH ELEVATIONS

A3.04 WEST ELEVATIONS

4.00 BUILDING SECTIONS

A4.01 BUILDING SECTIONS

A4.02 BUILDING SECTIONS

A4.03 BUILDING SECTIONS

Copyright reserved. These drawings and the design contained therein or which may be inferred therefrom are, and at all times remain, the exclusive property of Kuwabara Payne McKenna Blumberg | Hughes Condon Marler Architects | Architects in joint venture. Kuwabara Payne McKenna Blumberg | Hughes Condon Marler Architects | Architects in joint venture holds the copyright and ownership in the said drawings, which cannot be used for any purpose without the express written consent of Kuwabara Payne McKenna Blumberg | Hughes Condon Marler Architects | Architects in joint venture.

No.	ISSUES	DATE
1	DD RESUBMISSION	DEC 20, 2012

UBC PONDEROSA COMMONS
ALUMNI CENTRE

University of British Columbia
6488 University Boulevard
VANCOUVER, BC

Sheet Title
COVER SHEET

Job No. 1012
Issue Date DECEMBER 2012
Scale

A0.00

12/20/2012 2:34:47 PM

UBC ALUMNI CENTRE
Project Summary Update on 2012-12-19

SITE AREA	Area (m ²)	Area (sq.ft)
Site Area	1180	20236
Site Coverage	1092	11754

BUILDING HEIGHTS	Stories	m / ft
T.O. Slab to T.O. Parapet not including Mechanical	4	21 / 68.9

BUILDING AREA	Area (m ²)	Area (sq.ft)
Assignables per Program	480	5166
Public Domain on Level 1	381	4101
e@UBC (education)	625	6727
Celebration / Classrooms / Catering	654	7039
Alumni		
Total Assignable	2140	23034
Non-Assignables		
Corridors	687	7395
Service Space	435	4682
Structures/Walls/Un-assigned	464	4994
Total Non-Assignable	1146	12335
Total Building GSM	3878	41742

1 PROJECT STATISTICS
1 : 10

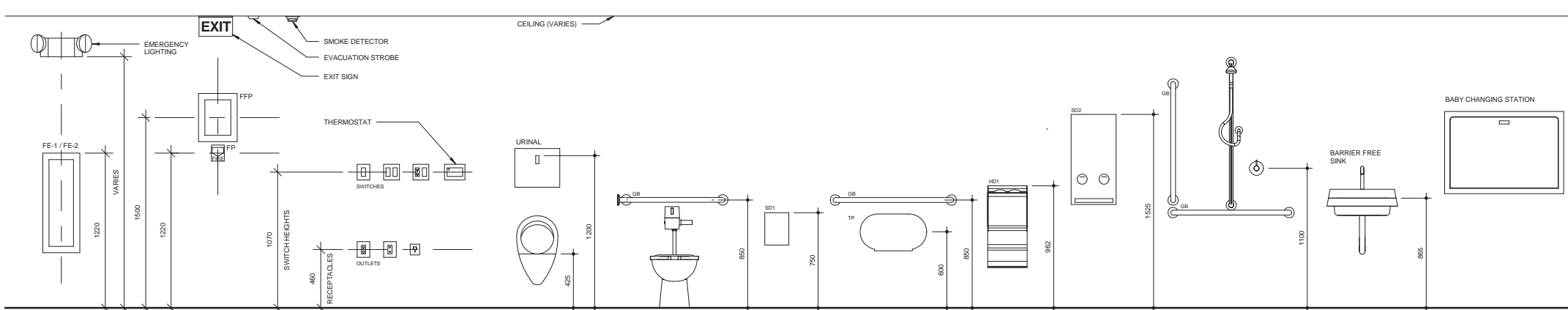
ANNOTATIONS LEGEND:

	Ref A101	BUILDING SECTION TAG
	Ref A101	WALL SECTION TAG
	Ref R101	CALLOUT TAG
	A101	INTERIOR ELEVATION TAG
	1t	ROOF TYPE TAG
	6882	DOOR TAG
	1t	WALL TAG
	MW-000	MILLWORK TAG
	1t	GLAZED PARTITION TAG
	1t	GLAZED PARTITION TAG
	B1	BASE TAG
		THRESHOLD SYMBOL
	88	REVISION TAG
		ELEVATION TAG
		FLOOR # ROOM NUMBER
		Room name
		WALL MOUNTED SPRINKLER
		CEILING MOUNTED SPRINKLER
	F	CEILING MOUNTED FIRE ALARM SPEAKER
	SD	CEILING MOUNTED SMOKE DETECTOR
		CEILING MOUNTED EXIT SIGN
		LIGHTING OCCUPANCY SENSOR
		CEILING MOUNTED LIGHT FIXTURE
		WALL MOUNTED LIGHT FIXTURE
		BATHROOM EXHAUST GRILLE
		CEILING MOUNTED EVACUATION STROBE
		FLOOR MOUNTED DUPLEX
		CEILING MOUNTED DUPLEX
		UNDER COUNTER LIGHT FIXTURE
		WALL MOUNTED EMERGENCY LIGHTING
	1t	CEILING FINISH
	xxxx	CEILING HEIGHT

ABBREVIATIONS:

AC	ALTERNATING CURRENT	F.O.	FACE OF	MAT	MATERIAL	S	SOUTH
ACT	ACCOUTIC TILE	FA	FIRE ALARM	MAX.	MAXIMUM	S.O.G.	SLAB ON GRADE
ADD	ADDENDUM	FB	FACE BRICK	MDF	MEDIUM DENSITY FIBREBOARD	S.P.T	SPECIAL PAINT
ADH	ADHESIVE	FDP	ANNUNCIATOR PANEL/FIRE CONTROL PANEL	MECH.	MECHANICAL	S.S.	STAINLESS STEEL
AFC	AIR FAN COIL UNIT	FCS	FIRE CONNECTION - CLASS 1	MET	METAL	SAM	SELF ADHERED MEMBRANE
AFF	ABOVE FLOOR FINISH	FDN	FOUNDATION	MFR	METAL LATH	SCHED	SCHEDULE
AIFB	ASPHALT IMPREGNATED FIBREBOARD	FE-1	FIRE EXTINGUISHER RECESSED	MH	MANUFACTURER	SD1	SEALED CONCRETE
ALUM.	ALUMINIUM	FE-2	FIRE EXTINGUISHER - WALL MOUNTED	MIM	MINIMUM	SD2	SANITARY NAPKIN DISPOSAL
ANODZD	ANODIZED	FF-E	FIRE FIGHTER PHONE	MISC	MISCELLANEOUS	SD3	SANITARY NAPKIN DISPENSER
AP	ACCESS PANEL	FFS	FIRE FIGHTER PHONE BOX	MMB	MEMBRANE	SECT.	SECTION
APPROX	APPROXIMATE	FD	FOOT GRILLE	MW	MASONRY OPENING	SFL	SEAMLESS FLOORING
ARCH	ARCHITECTURAL	FHC	FIRE HOSE CABINET	MR	MIRROR	SGL	SAFETY GLASS
ASPH	ASPHALT	FHR	FIRE HOSE RACK	MSNRY	MASONRY	SHTG	SHEATHING
ASPH PVG	ASPHALT PAVING	FIN	FINISH	MTL	MOUNTED	SHL	SHEET GLASS
AUTO	AUTOMATIC	FL DR	FLOOR DRAIN	MV	MICROWAVE	SL	SLAB
AVB	AIR/VAPOUR BARRIER	FLR	FLOOR	MWP	MEMBRANE WATERPROOFING	SLM	SIMILAR
		FR	REFRIGERATOR			SLT	SEALANT
		FRR	FIRE RESISTANCE RATING			SPF	SPRAYED MINERAL FIREPROOFING
		FT	FEET	NGAS	NEOPRENE GASKET	SPN	SPANDREL
		FTG	FOOTING	NHYP	NEOPRENE - HYPALON	STN	STONE
				NIC	NOT IN CONTRACT	STD	STEEL DECK
				NO.	NUMBER	STL	STEEL
				NOM	NOMINAL	STN	STAIN
				NS	NON-SLIP	STR	STRUCTURAL
				NTS	NOT TO SCALE	SUSP	SUSPEND
						SUSPD	SUSPENDED
		GA	GAUGE	O.C.	ON CENTRE	T.O.	TOP OF
		GALV.	GALVANIZED	OD	OUTSIDE DIAMETER	T.O.S.	TOP OF SLAB
		GB	GRAB BAR	OH	OVERHEAD	TB	TIMBER
		GBLK	GLAZED BLOCK	CHD	CHANCE DOOR	TEMP	TEMPERATURE
		GC	GLAZING CHANNEL	OPNG	OPENING	TEMPGL	TEMPERED GLASS
		GCT	GLAZED CERAMIC TILE	OPP	OPPOSITE	THK	THICK
		GFS	GARAGE FLOOR SEALER	OWSJ	OPEN WEB STEEL JOIST	TMBR	THERMAL BARRIER
		GI	GALVANIZED IRON			TP	TOILET PAPER HOLDER
		GL	GLASS	PCONC	PREFABRICATED CONCRETE	TR	TRIM
		GRL	GRILLE	PERF.MTL	PERFORATED METAL	TT	TOPPING
		GRAN	GRANITE	PGHW	POLISHED GEORGIAN WIRED GLASS	TXF	TEXTURED FINISH
		GRND	GROUND	PL	PLASTER	TYP.	TYPICAL
		GS	GALVANIZED STEEL	PLM	PLASTIC LAMINATE	U/S	UNDERSIDE
		GYP	GYPSUM	PLF	POLISHED GEORGIAN WIRED GLASS	UN.O.	UNLESS NOTED OTHERWISE
		GWB	GYPSUM WALLBOARD	PLY	PLYWOOD	UNGLZD	UNGLAZED CERAMIC TILE
				POR	PRESSED METAL	UNFIN	UNFINISHED
				POL	POLISHED	USGG	UNITED STATES STEEL GAUGE
				POR	PORCELAIN TILE		
				PPGL	POLISHED PLATE GLASS		
				PPT	PRIME PAINTED		
				PREFAB	PREFABRICATED		
				PRECAST	PREFABRICATED CONCRETE PANEL		
				PROJ	PROJECTION	VB	VAPOUR BARRIER
				PS	PRESSED STEEL	VCT	VINYL FLOORING
				PSF	POUNDS PER SQUARE FOOT	VERT	VERTICAL
				PT	PAPER TOWEL DISPENSER	VOL	VOLUME
				PTD	PAPER TOWEL DISPENSER PARTITION	VWF	VINYL WOOD FLOORING
				PTN	PARTITION		
				PVC	POLYVINYL CHLORIDE	W.O.	WHERE OCCURS
				R & S	ROD & SHELF	W	WEST
				R.D.	ROUGH OPENING	WI	WITH
				RA	RUBBER ANCHOR	WB	WEATHER-STRIPPING
				RAD	RADIATOR	WB	WINDOW BLIND
				RB	RUBBER BASE	WB	WEATHERING STEEL
				RCP	REFLECTED CEILING PLAN	WD	WOOD
				RD	ROOF DRAIN	WDF	WOOD FLOOR
				REC	RECESSED	WGL	WIRED GLASS
				REF	REFERENCE	WM	WIRE MESH
				REFGL	REFLECTED GLASS	WPF	WATERPROOF / WATERPROOFING
				REIN	REINFORCED	WWT	WINDOW WASHING TRACK
				RENOV	RENOVATION		
				REQ.	REQUIRED		
				REV	REVISION		
				RG	RANGE		
				RH	RIGHT HAND		
				RHR	RIGHT HAND REVERSE		
				RI	RIGID INSULATION		
				RM	ROOM		
				RWL	RAIN WATER LEADER / DOWNSPOUT		

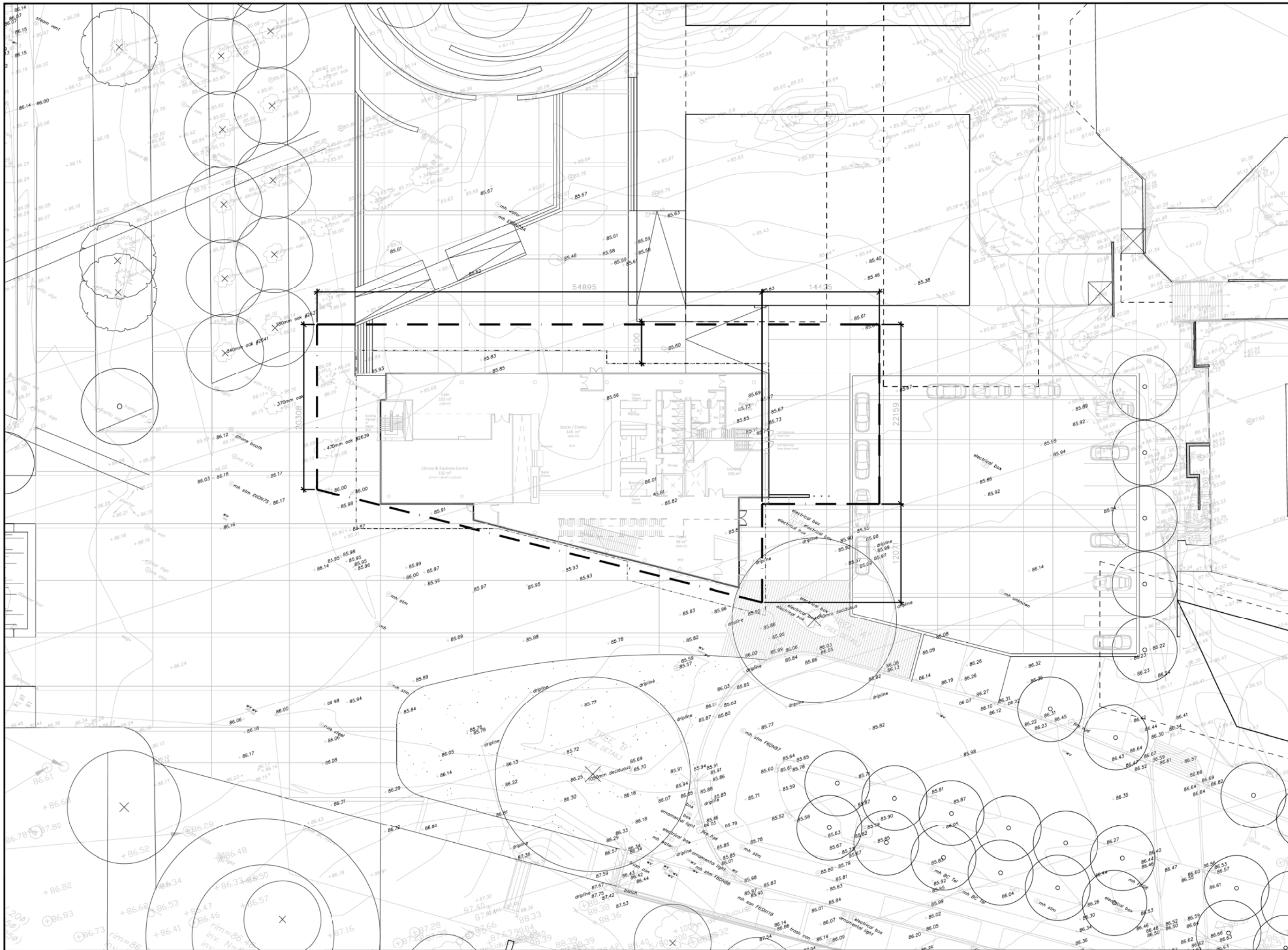
TYPICAL MOUNTING HEIGHTS



Copyright reserved. These drawings and the design contained therein or which may be inferred therefrom are, and at all times remain, the exclusive property of Kuwabara Payne McKenna Blumberg | Hughes Condon Maller Architects | Architects in joint venture. Kuwabara Payne McKenna Blumberg | Hughes Condon Maller Architects | Architects in joint venture holds the copyright and ownership in the said drawings, which cannot be used for any purpose without the express written consent of Kuwabara Payne McKenna Blumberg | Hughes Condon Maller Architects | Architects in joint venture.

No. ISSUES DATE

1 DD RESUBMISSION DEC 20, 2012



Rev.	Date	Issued
1	SEPT. 28, 2010	ISSUED FOR DEVELOPMENT PRINT APPLICATION

Seals

Architects
KPMB | HCMA
 KPMBCorp Architects
 122 Bay Street
 Suite 200
 Toronto, ON M5J 1J2
 Tel: 416-977-4000
 Fax: 416-977-9880

Consultants
 UBC Properties Trust
 Structural Engineers - Gloman Simpson
 Mechanical Engineers - MIM Group
 Electrical Engineers - Startec Consulting
 Landscape Architects - Phillips Farevaag Smallerberg
 Code Consultant - LMPG
 Civil Engineers - KEMP Engineering



Project
UBC ALUMNI BUILDING
 University Blvd.
 Vancouver, B.C.

Drawing Title
 Survey Plan

Scale
 Drawn By: KMM
 Reviewed By:
 Project Number: UBC Alumni - 1012
 Plot Date: SEPT. 28, 2010

Drawing Number
 A005