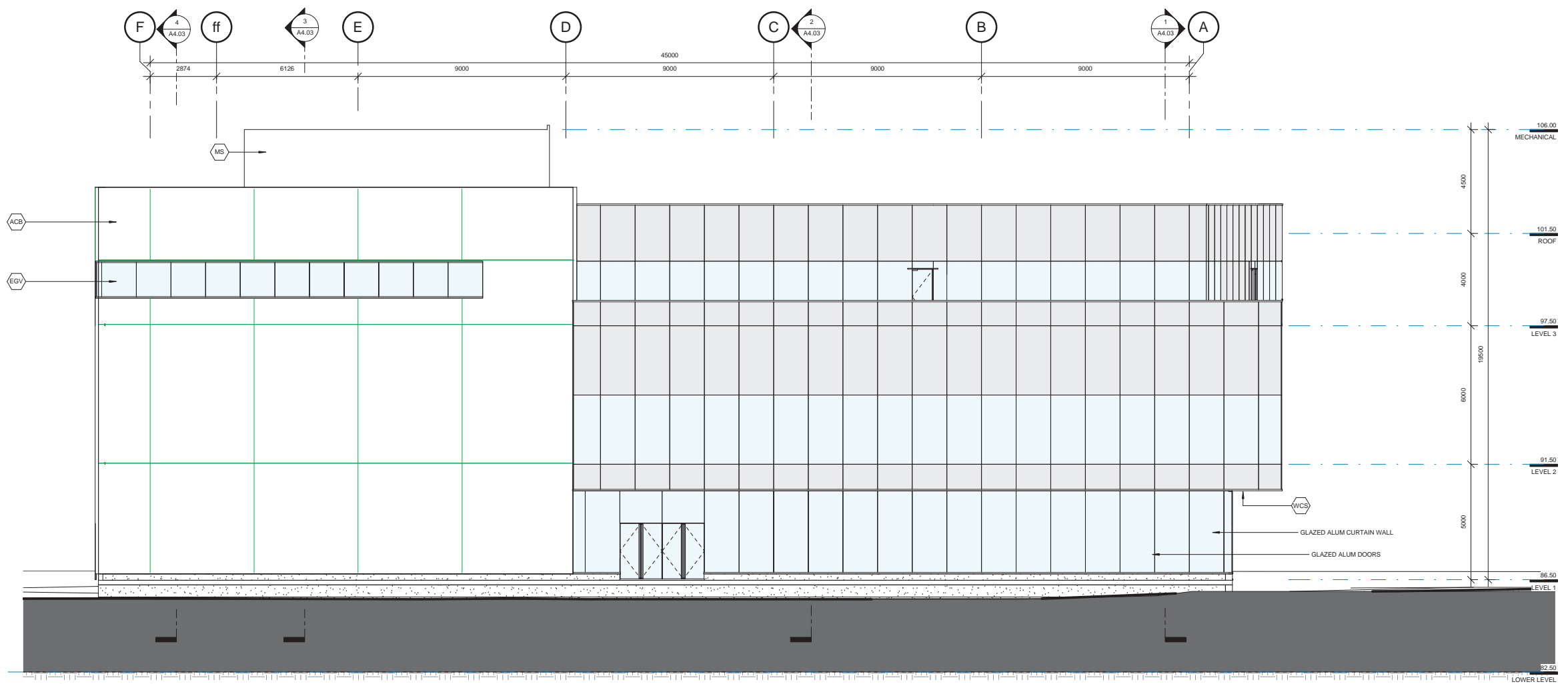
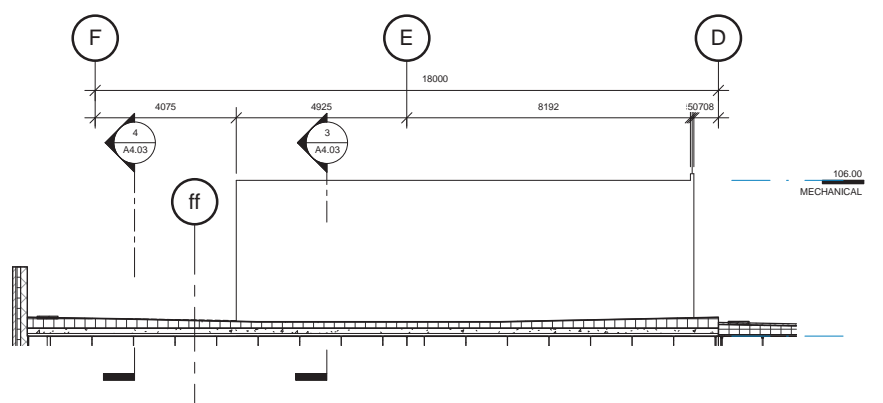


Copyright reserved. These drawings and the design contained therein or which may be inferred therefrom are, and at all times remain, the exclusive property of Kuwabara Payne McKenna Blumberg | Hughes Condon Marler Architects | Architects in joint venture. Kuwabara Payne McKenna Blumberg | Hughes Condon Marler Architects | Architects in joint venture holds the copyright and ownership in the said drawings, which cannot be used for any purpose without the express written consent of Kuwabara Payne McKenna Blumberg | Hughes Condon Marler Architects | Architects in joint venture.

No.	ISSUES	DATE



1 NORTH ELEVATION
1:100



2 NORTH ELEVATION AT ROOF LEVEL
1:100

EXTERIOR MATERIALS LEGEND:

GLAZED CURTAIN WALL - FRIT PATTERN 1	EXTERIOR GLAZING - VISION GLASS	WOOD CANOPY SOFFIT
GLAZED CURTAIN WALL - FRIT PATTERN 2	EXTERIOR GLAZING - SPANDREL GLASS INSULATED	PERFORATED METAL SCREEN
GLAZED CURTAIN WALL - FRIT PATTERN 3	EXTERIOR GLAZING - SPANDREL PARAPET INSULATED	PREFINISHED METAL COPING
GLAZED CURTAIN WALL - SHADOW BOX	ARCHITECTURAL CONCRETE BLOCK	PREFINISHED METAL FLASHING
GLAZED CURTAIN WALL - SPANDREL GLASS INSULATED	EXTERIOR GLAZING - VISION GLASS	PREFINISHED ALUMINUM FLASHING

**UBC PONDEROSA COMMONS
ALUMNI CENTRE**

University of British Columbia
6488 University Boulevard
VANCOUVER, BC

Sheet Title
NORTH ELEVATIONS

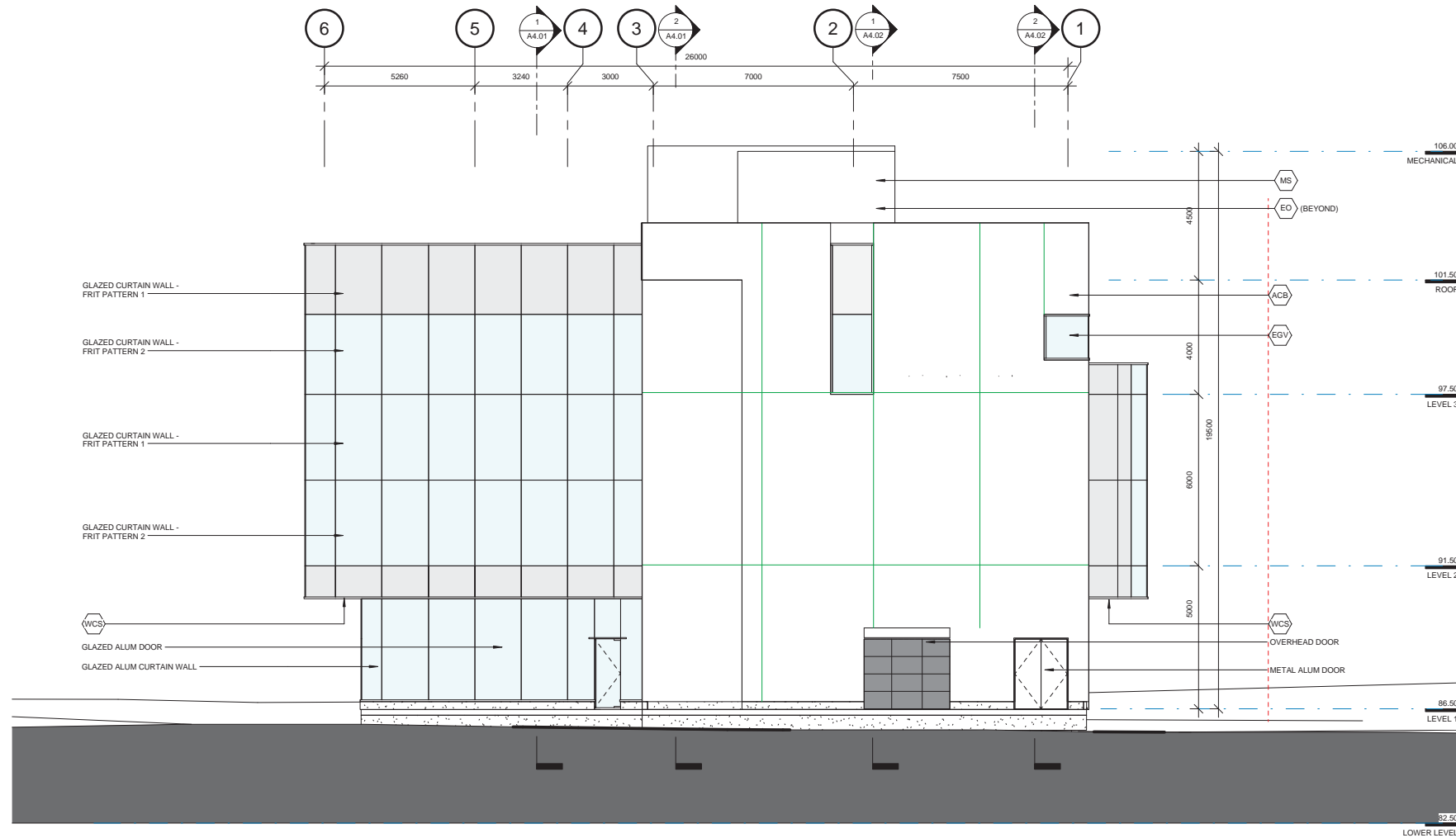
Job No. 1012
Issue Date DECEMBER 2012
Scale 1:100

A3.01

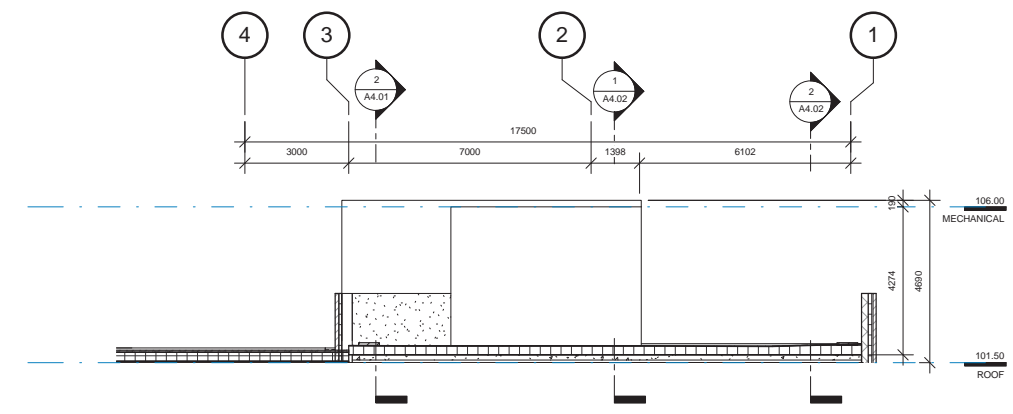
10/20/2012 2:29:18 PM

Copyright reserved. These drawings and the design contained therein or which may be inferred therefrom are, and at all times remain, the exclusive property of Kuwabara Payne McKenna Blumberg | Hughes Condon Marler Architects | Architects in joint venture. Kuwabara Payne McKenna Blumberg | Hughes Condon Marler Architects | Architects in joint venture holds the copyright and ownership in the said drawings, which cannot be used for any purpose without the express written consent of Kuwabara Payne McKenna Blumberg | Hughes Condon Marler Architects | Architects in joint venture.

No. ISSUES	DATE
1 DD RESUBMISSION	DEC 20, 2012



1 EAST ELEVATION
1 : 100



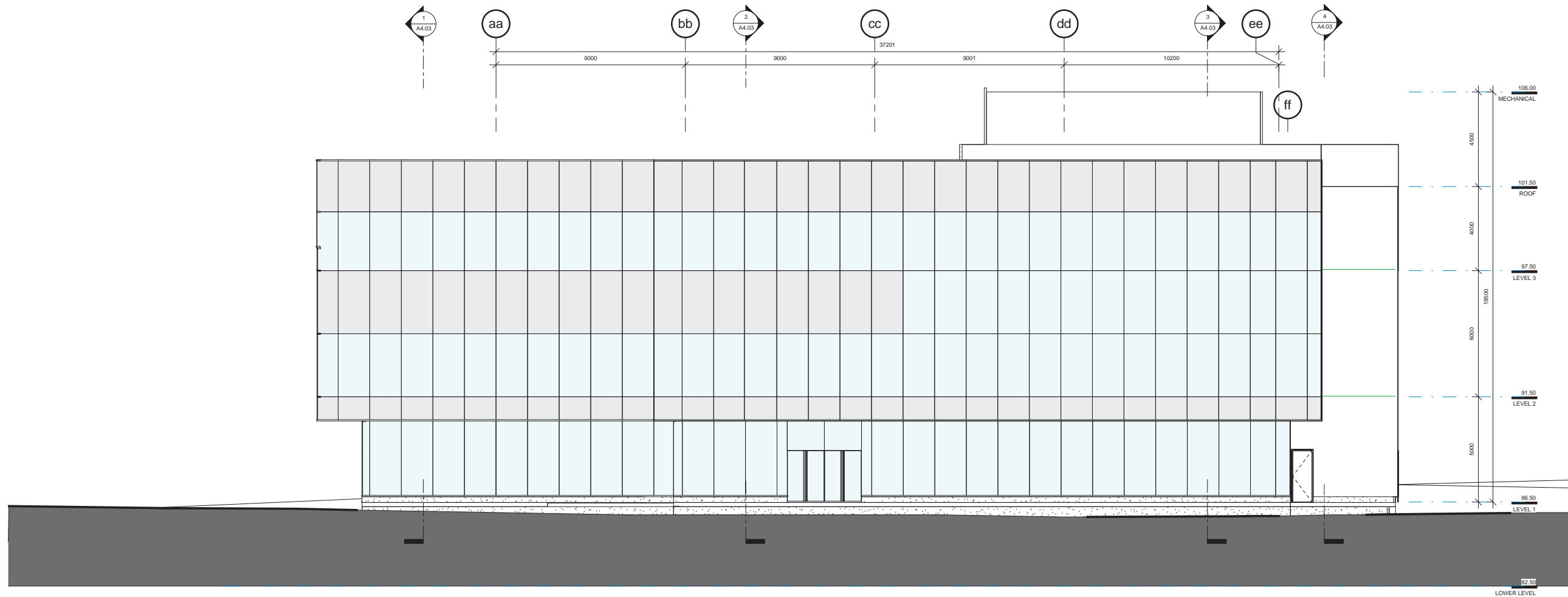
2 EAST ELEVATION AT ROOF
1 : 100

EXTERIOR MATERIALS LEGEND:

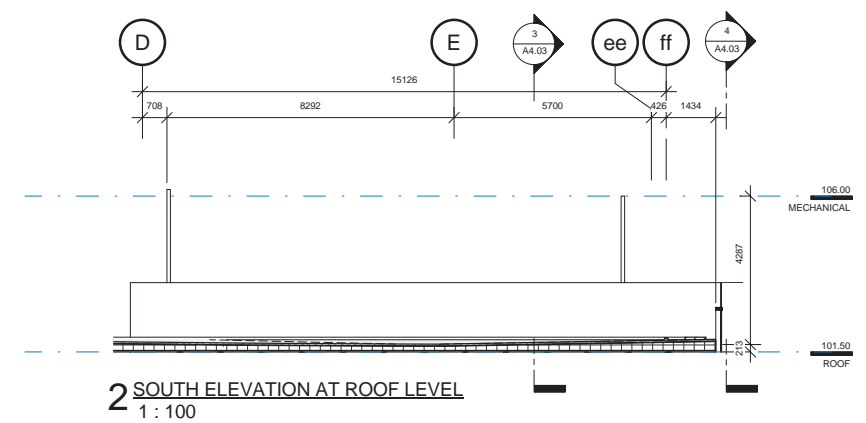
	GLAZED CURTAIN WALL - FRIT PATTERN 1		EXTERIOR GLAZING - VISION GLASS		WOOD CANOPY SOFFIT
	GLAZED CURTAIN WALL - FRIT PATTERN 2		EXTERIOR GLAZING - SPANDREL GLASS INSULATED		PERFORATED METAL SCREEN
	GLAZED CURTAIN WALL - FRIT PATTERN 3		EXTERIOR GLAZING - SPANDREL PARAPET INSULATED		PREFINISHED METAL COPING
	GLAZED CURTAIN WALL - SHADOW BOX		ARCHITECTURAL CONCRETE BLOCK		PREFINISHED METAL FLASHING
	GLAZED CURTAIN WALL - SPANDREL GLASS INSULATED		PREFINISHED ALUMINUM FLASHING		

Copyright reserved. These drawings and the design contained therein or which may be inferred therefrom are, and at all times remain, the exclusive property of Kuwabara Payne McKenna Blumberg | Hughes Condon Marler Architects | Architects in joint venture. Kuwabara Payne McKenna Blumberg | Hughes Condon Marler Architects | Architects in joint venture holds the copyright and ownership in the said drawings, which cannot be used for any purpose without the express written consent of Kuwabara Payne McKenna Blumberg | Hughes Condon Marler Architects | Architects in joint venture.

No.	ISSUES	DATE
1	DD RESUBMISSION	DEC 20, 2012



1 SOUTH ELEVATION
1:100



2 SOUTH ELEVATION AT ROOF LEVEL
1:100

EXTERIOR MATERIALS LEGEND:

	GLAZED CURTAIN WALL - FRIT PATTERN 1		EGV EXTERIOR GLAZING - VISION GLASS		WCS WOOD CANOPY SOFFIT
	GLAZED CURTAIN WALL - FRIT PATTERN 2		EGS EXTERIOR GLAZING - SPANDREL GLASS INSULATED		MS PERFORATED METAL SCREEN
	GLAZED CURTAIN WALL - FRIT PATTERN 3		EGS EXTERIOR GLAZING - SPANDREL PARAPET INSULATED		MC PREFINISHED METAL COPING
	GLAZED CURTAIN WALL - SHADOW BOX		ACB ARCHITECTURAL CONCRETE BLOCK		MF PREFINISHED METAL FLASHING
	GLAZED CURTAIN WALL - SPANDREL GLASS INSULATED		AF PREFINISHED ALUMINUM FLASHING		

UBC PONDEROSA COMMONS
ALUMNI CENTRE

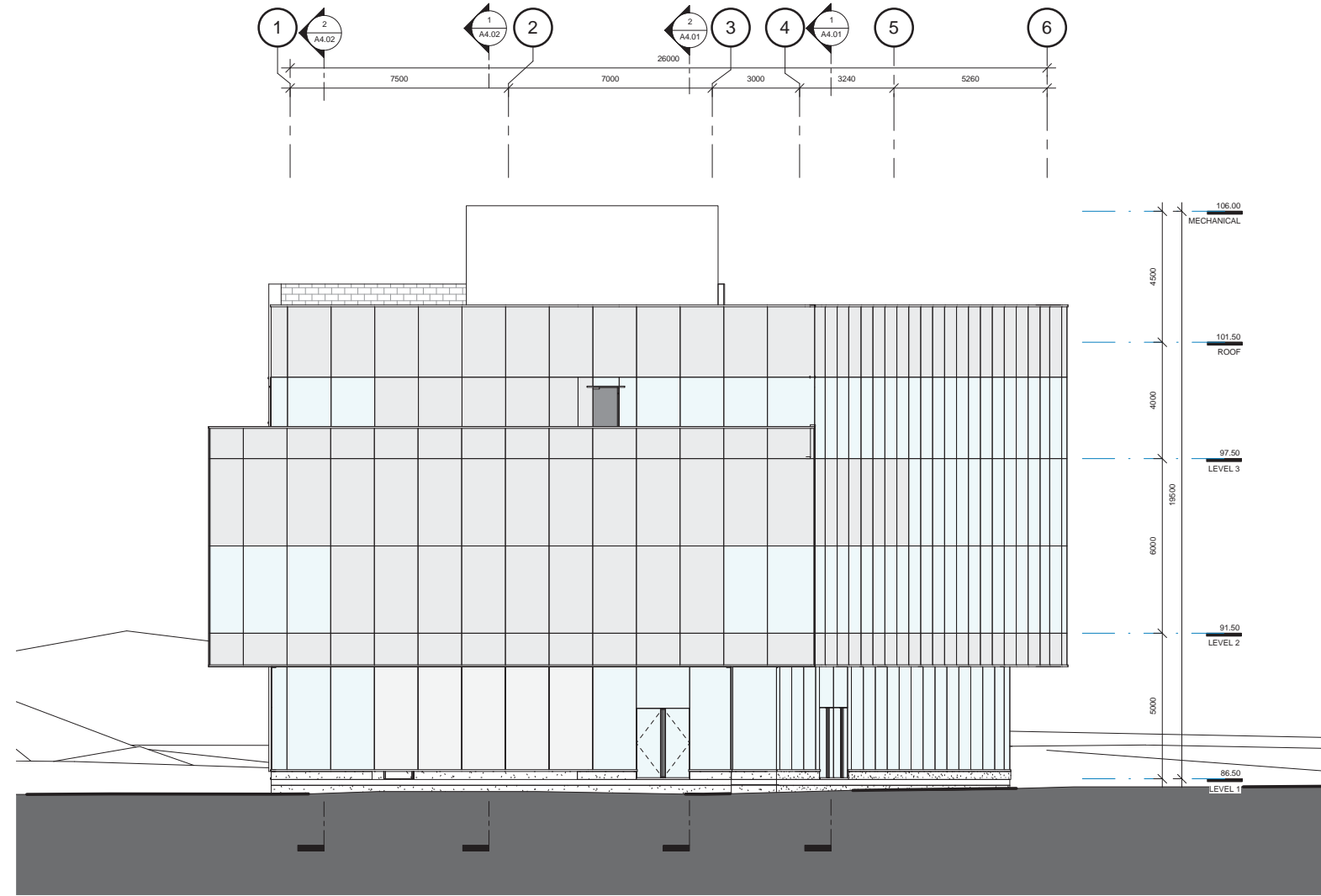
University of British Columbia
6488 University Boulevard
VANCOUVER, BC

Sheet Title
SOUTH ELEVATIONS

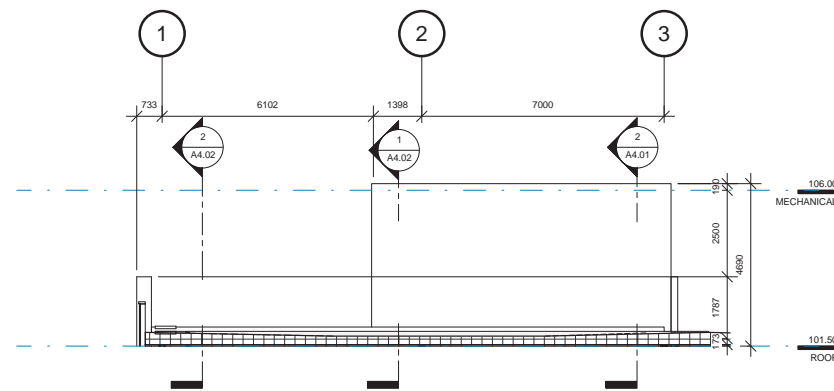
Job No.	1012
Issue Date	DECEMBER 2012
Scale	1:100

Copyright reserved. These drawings and the design contained therein or which may be inferred therefrom are, and at all times remain, the exclusive property of Kuwabara Payne McKenna Blumberg | Hughes Condon Marler Architects | Architects in joint venture. Kuwabara Payne McKenna Blumberg | Hughes Condon Marler Architects | Architects in joint venture holds the copyright and ownership in the said drawings, which cannot be used for any purpose without the express written consent of Kuwabara Payne McKenna Blumberg | Hughes Condon Marler Architects | Architects in joint venture.

No.	ISSUES	DATE
1	DD RESUBMISSION	DEC 20, 2012



1 WEST ELEVATION
1 : 100



2 WEST ELEVATION AT ROOF
1 : 100

EXTERIOR MATERIALS LEGEND:

	GLAZED CURTAIN WALL - FRIT PATTERN 1		EGV EXTERIOR GLAZING - VISION GLASS		WCS WOOD CANOPY SOFFIT
	GLAZED CURTAIN WALL - FRIT PATTERN 2		EGS EXTERIOR GLAZING - SPANDEL GLASS INSULATED		MS PERFORATED METAL SCREEN
	GLAZED CURTAIN WALL - FRIT PATTERN 3		EGS EXTERIOR GLAZING - SPANDEL PARAPET INSULATED		MC PREFINISHED METAL COPING
	GLAZED CURTAIN WALL - SHADOW BOX		ACB ARCHITECTURAL CONCRETE BLOCK		MF PREFINISHED METAL FLASHING
	GLAZED CURTAIN WALL - SPANDEL GLASS INSULATED		AF PREFINISHED ALUMINUM FLASHING		

UBC PONDEROSA COMMONS
ALUMNI CENTRE

University of British Columbia
6488 University Boulevard
VANCOUVER, BC

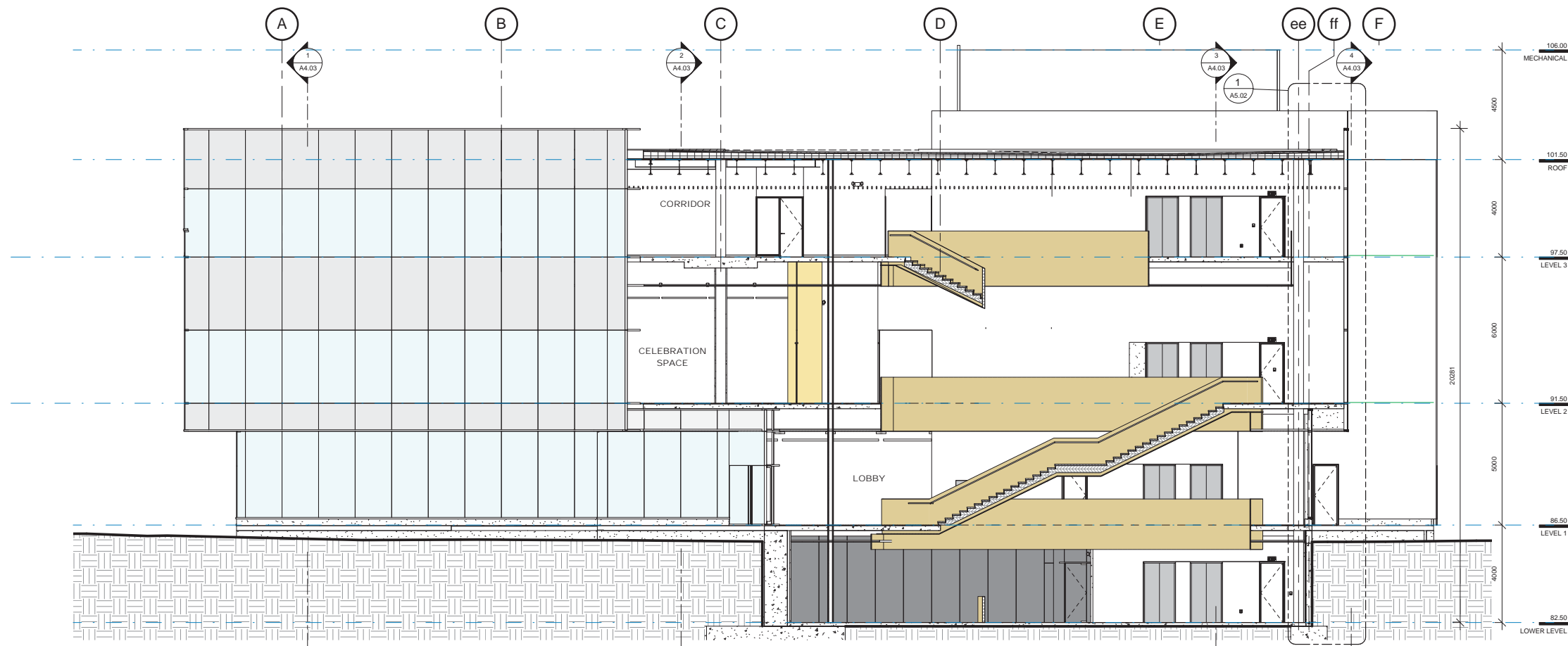
Sheet Title
WEST ELEVATIONS

Job No. 1012
Issue Date DECEMBER 2012
Scale 1 : 100

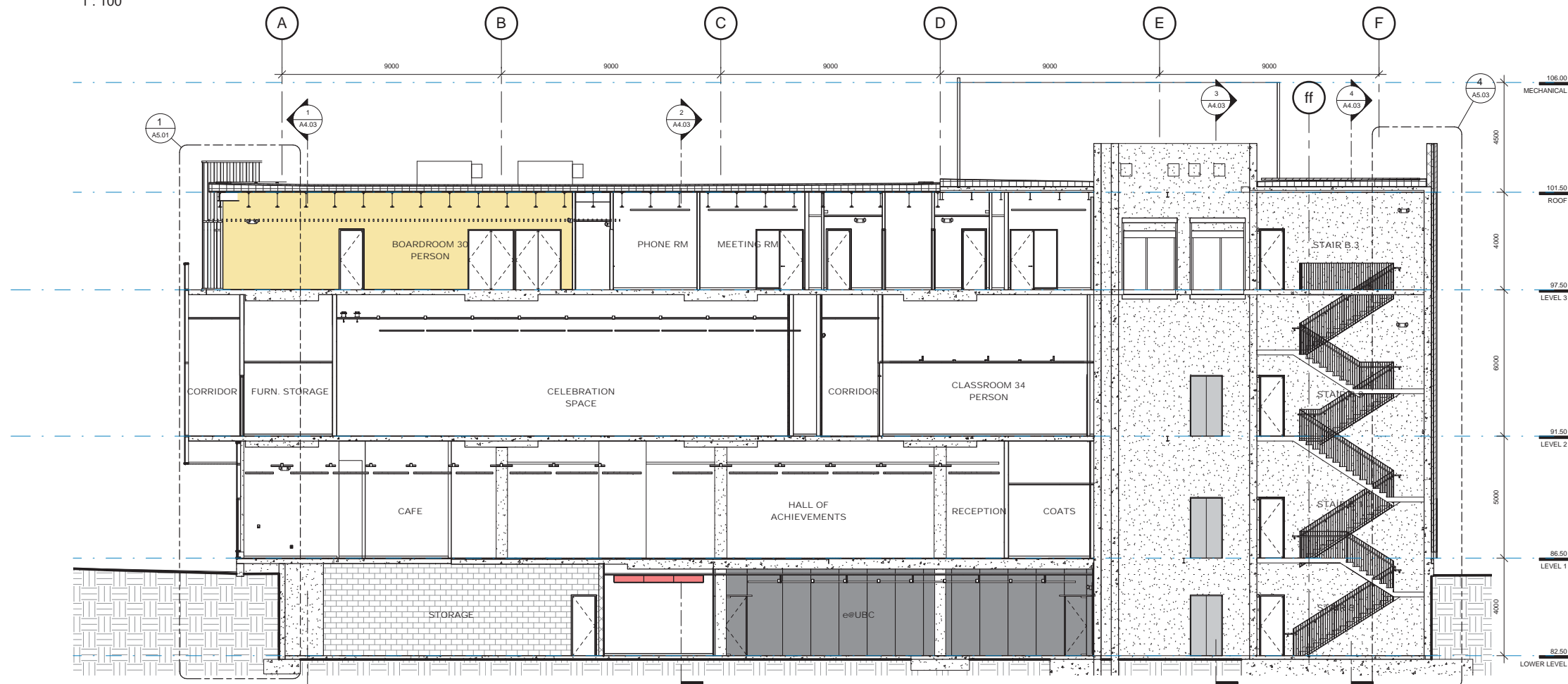
A3.04

Copyright reserved. These drawings and the design contained therein or which may be inferred therefrom are, and at all times remain, the exclusive property of Kuwabara Payne McKenna Blumberg | Hughes Condon Marler Architects | Architects in joint venture. Kuwabara Payne McKenna Blumberg | Hughes Condon Marler Architects | Architects in joint venture holds the copyright and ownership in the said drawings, which cannot be used for any purpose without the express written consent of Kuwabara Payne McKenna Blumberg | Hughes Condon Marler Architects | Architects in joint venture.

No.	ISSUES	DATE
1	DD RESUBMISSION	DEC 20, 2012



1 E-W SECTION LOOKING NORTH-1
1 : 100



2 E-W SECTION LOOKING NORTH-2
1 : 100

UBC PONDEROSA COMMONS
ALUMNI CENTRE

University of British Columbia
6488 University Boulevard
VANCOUVER, BC

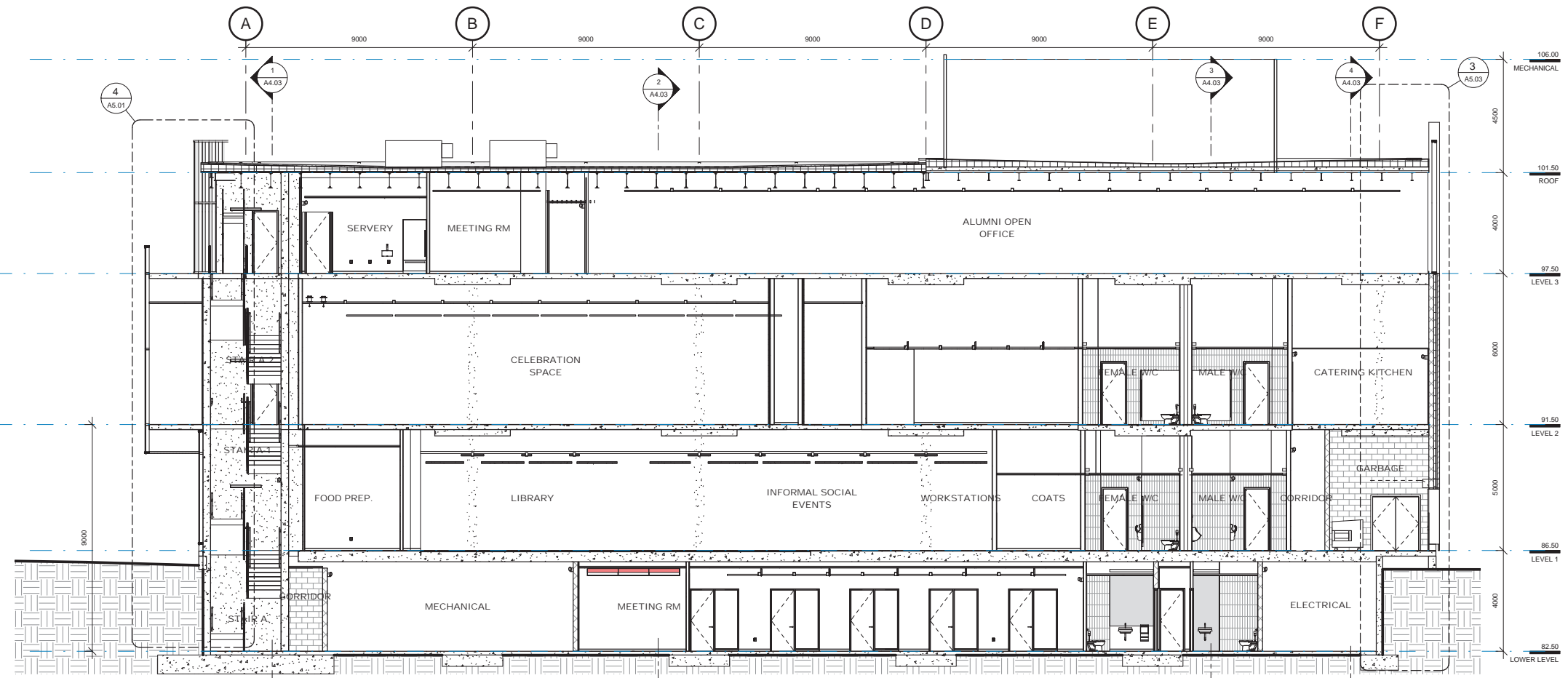
Sheet Title
BUILDING SECTIONS

Job No. 1012
Issue Date DECEMBER 2012
Scale 1 : 100

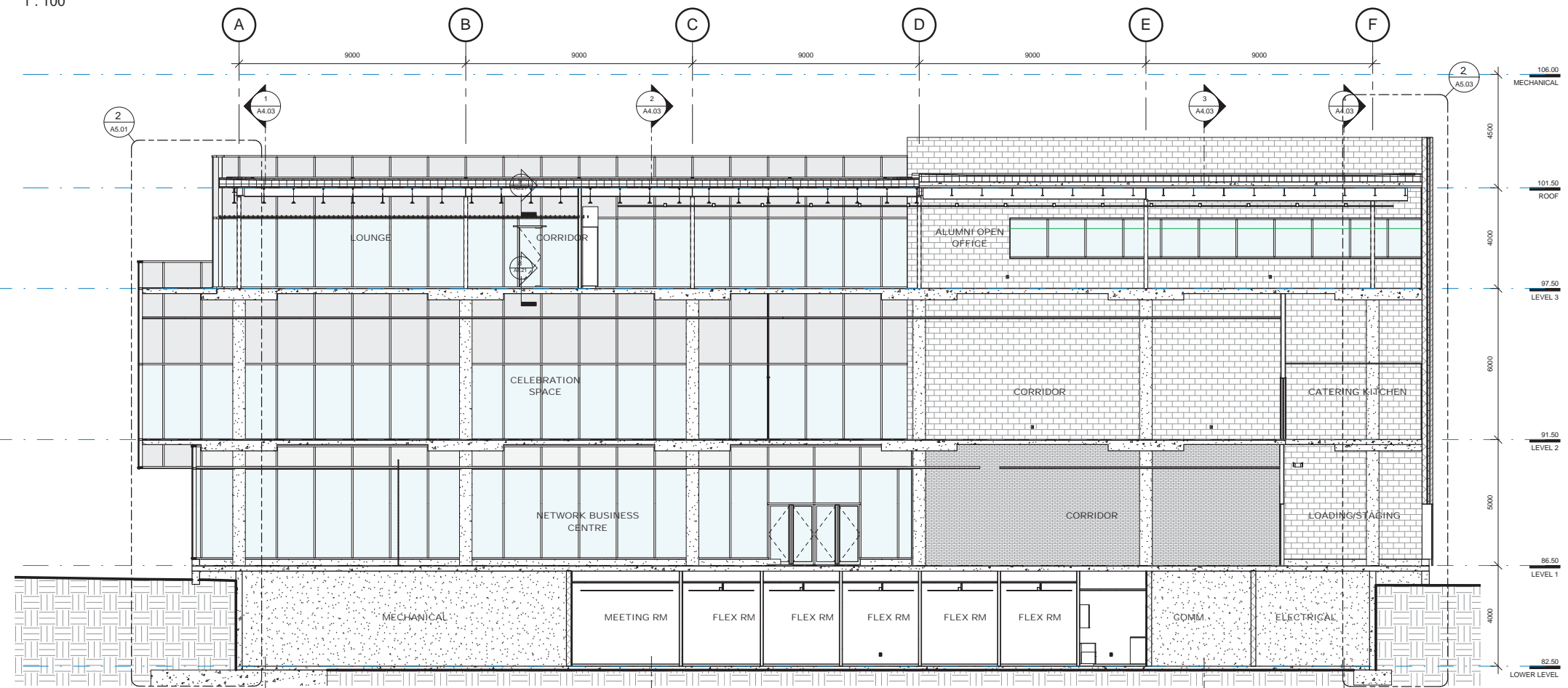
A4.01

Copyright reserved. These drawings and the design contained therein or which may be inferred therefrom are, and at all times remain, the exclusive property of Kuwabara Payne McKenna Blumberg | Hughes Condon Marler Architects | Architects in joint venture. Kuwabara Payne McKenna Blumberg | Hughes Condon Marler Architects | Architects in joint venture holds the copyright and ownership in the said drawings, which cannot be used for any purpose without the express written consent of Kuwabara Payne McKenna Blumberg | Hughes Condon Marler Architects | Architects in joint venture.

No.	ISSUES	DATE
1	DD RESUBMISSION	DEC 20, 2012



1 E-W SECTION LOOKING NORTH-3
1 : 100



2 E-W SECTION LOOKING NORTH-4
1 : 100

UBC PONDEROSA COMMONS
ALUMNI CENTRE

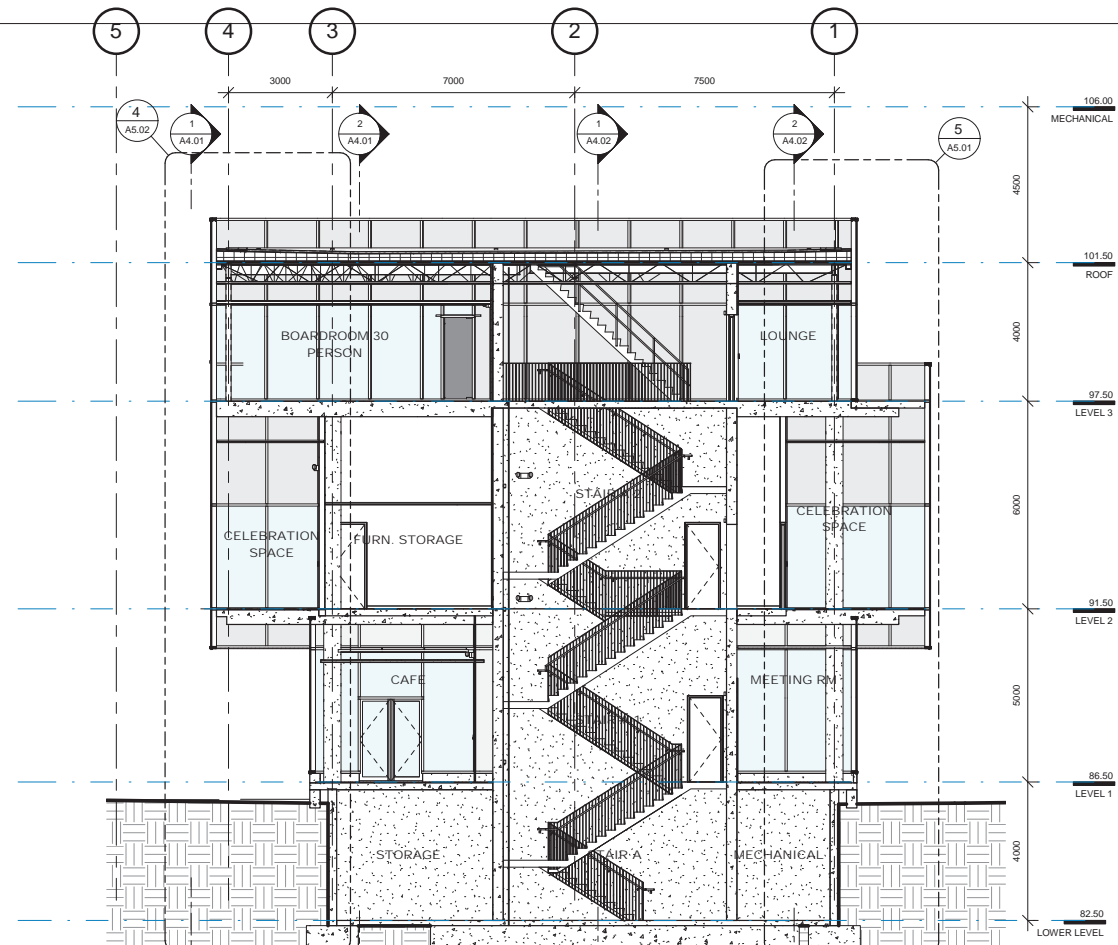
University of British Columbia
6488 University Boulevard
VANCOUVER, BC

Sheet Title
BUILDING SECTIONS

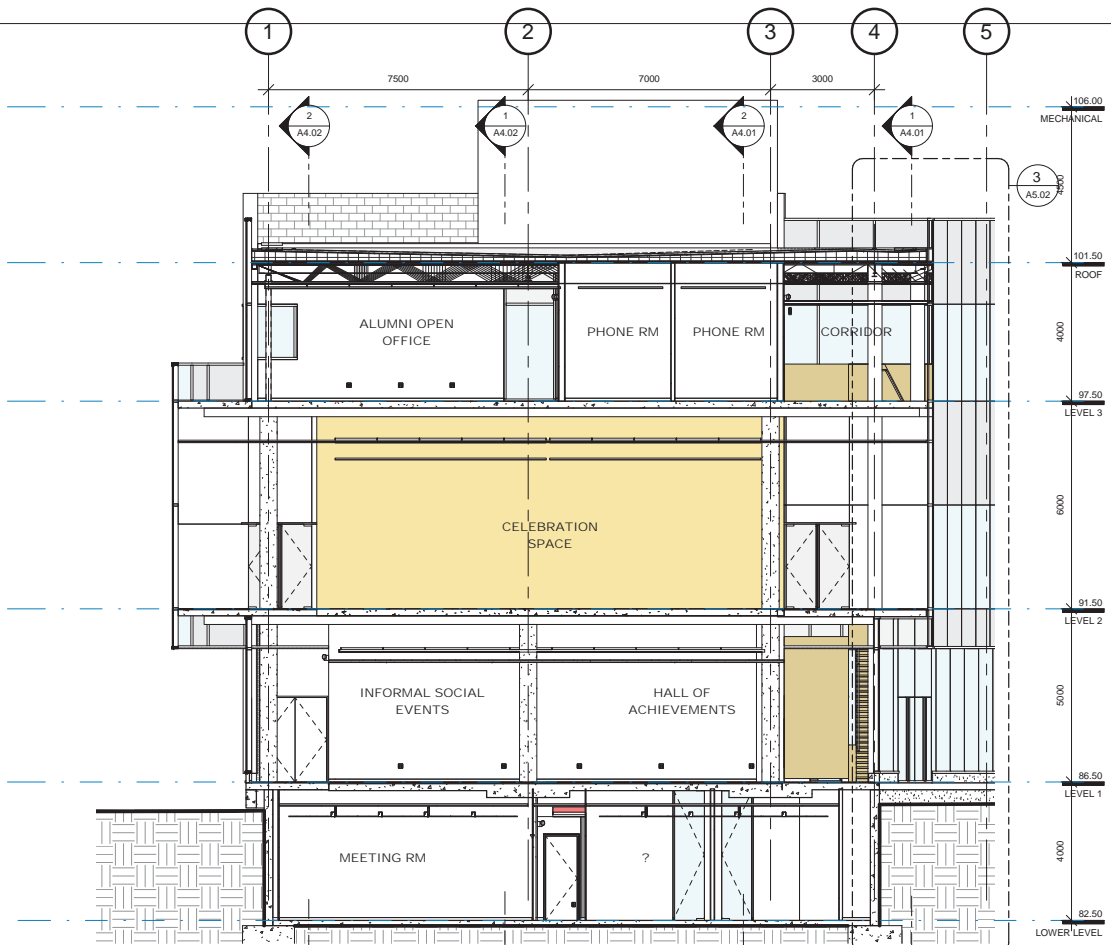
Job No. 1012
Issue Date DECEMBER 2012
Scale 1 : 100

Copyright reserved. These drawings and the design contained therein or which may be inferred therefrom, and at all times remain, the exclusive property of Kuwabara Payne McKenna Blumberg | Hughes Condon Marler Architects | Architects in joint venture. Kuwabara Payne McKenna Blumberg | Hughes Condon Marler Architects | Architects in joint venture holds the copyright and ownership in the said drawings, which cannot be used for any purpose without the express written consent of Kuwabara Payne McKenna Blumberg | Hughes Condon Marler Architects | Architects in joint venture.

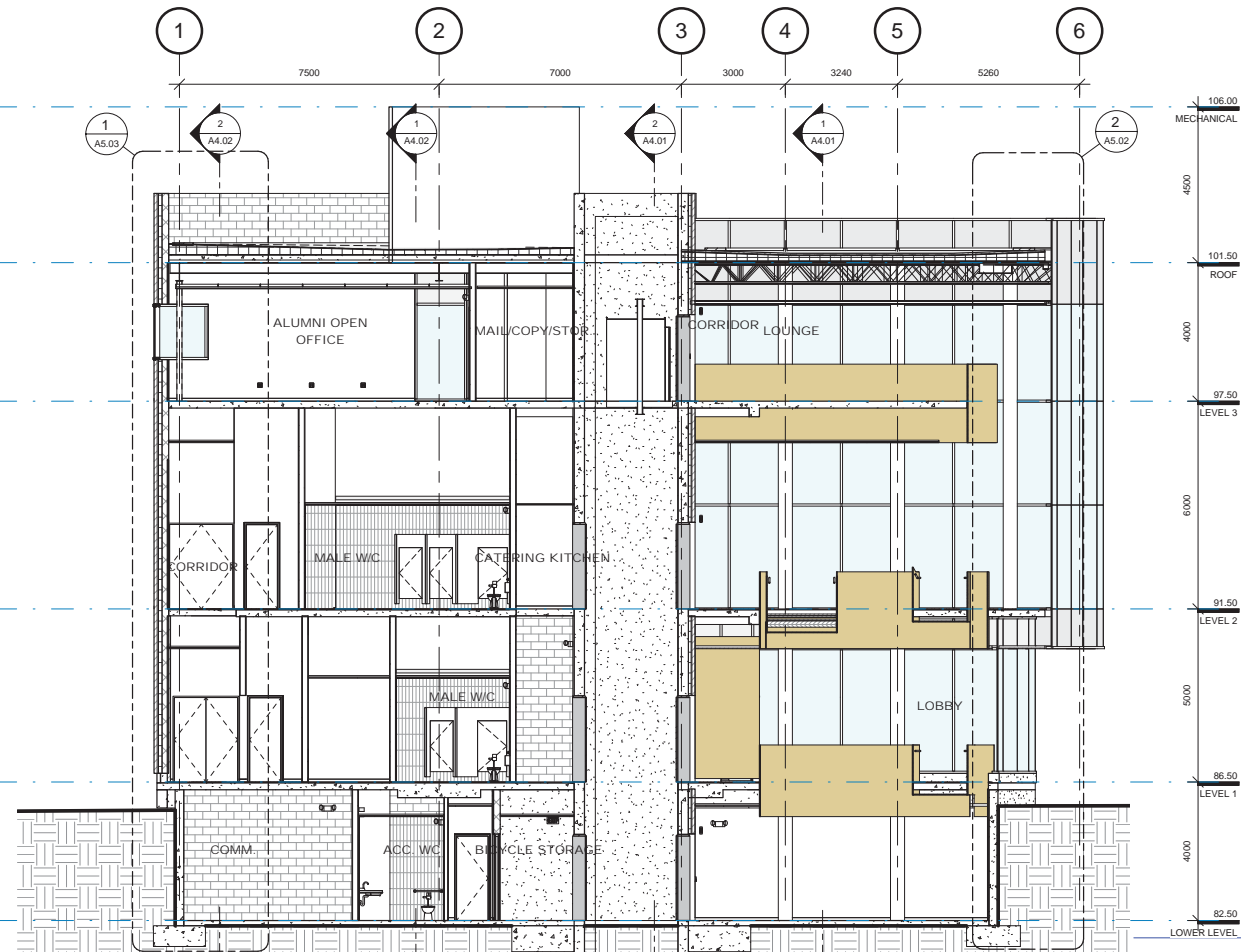
No. ISSUES	DATE
1 DD RESUBMISSION	DEC 20, 2012



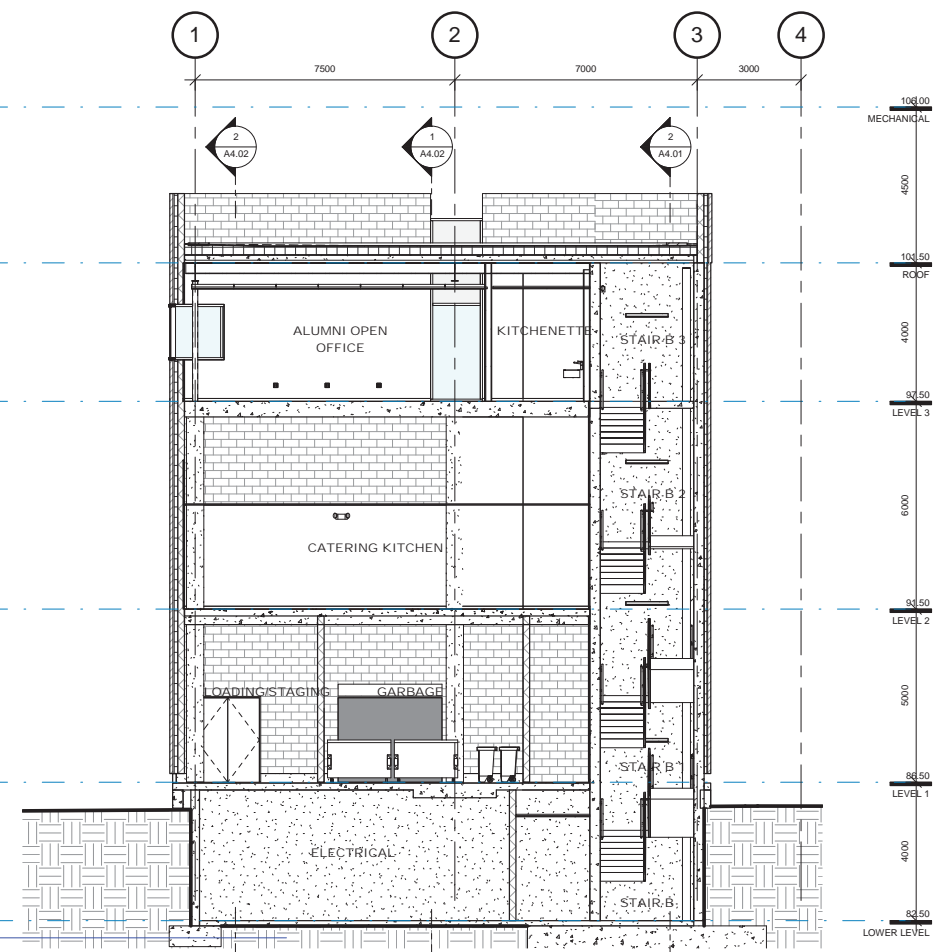
1 N-S SECTION LOOKING WEST
1:100



2 N-S SECTION LOOKING EAST
1:100



3 N-S SECTION LOOKING EAST - 3
1:100



4 N-S SECTION LOOKING EAST - 2
1:100

UBC PONDEROSA COMMONS
ALUMNI CENTRE

University of British Columbia
6488 University Boulevard
VANCOUVER, BC

Sheet Title
BUILDING SECTIONS

Job No. 1012
Issue Date DECEMBER 2012
Scale 1:100