

Copyright reserved. These drawings and the design contained therein or which may be inferred therefrom are, and at all times remain, the exclusive property of Kuwabara Payne McKenna Blumberg | Hughes Condon Marler Architects | Architects in joint venture. Kuwabara Payne McKenna Blumberg | Hughes Condon Marler Architects | Architects in joint venture holds the copyright and ownership in the said drawings, which cannot be used for any purpose without the express written consent of Kuwabara Payne McKenna Blumberg | Hughes Condon Marler Architects | Architects in joint venture.

No.	ISSUES	DATE
1	DD RESUBMISSION	DEC 20, 2012

UBC PONDEROSA COMMONS
 ALUMNI CENTRE

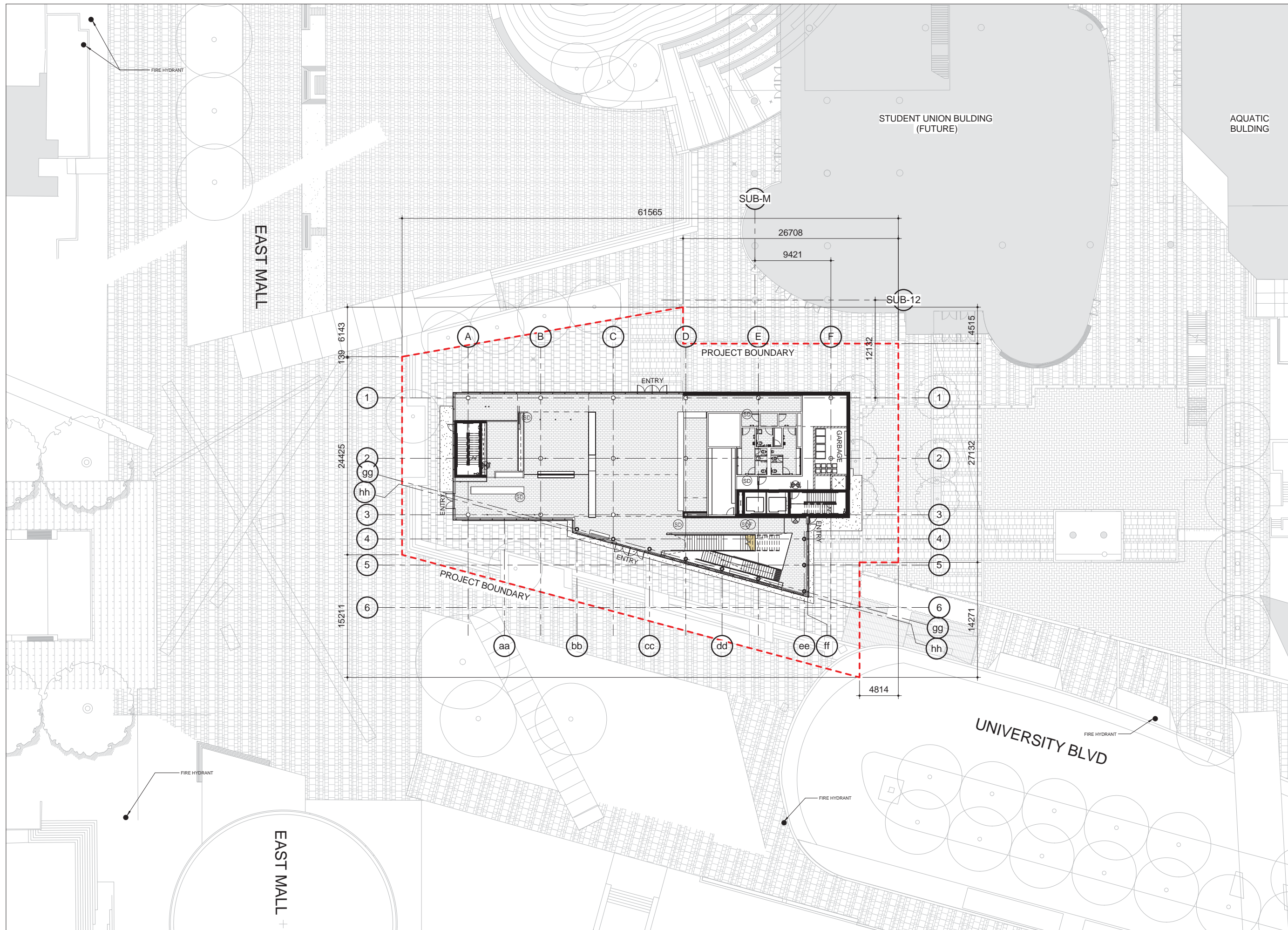
University of British Columbia
 6488 University Boulevard
 VANCOUVER, BC

Sheet Title
 SITE PLAN

Job No. 1012
 Issue Date DECEMBER 2012
 Scale 1 : 200

12/20/2012 10:14 AM

A1.01



Copyright reserved. These drawings and the design contained therein or which may be inferred therefrom are, and at all times remain, the exclusive property of Kuwabara Payne McKenna Blumberg | Hughes Condon Marler Architects | Architects in joint venture. Kuwabara Payne McKenna Blumberg | Hughes Condon Marler Architects | Architects in joint venture holds the copyright and ownership in the said drawings, which cannot be used for any purpose without the express written consent of Kuwabara Payne McKenna Blumberg | Hughes Condon Marler Architects | Architects in joint venture.

No. ISSUES	DATE
1 DD RESUBMISSION	DEC 20, 2012

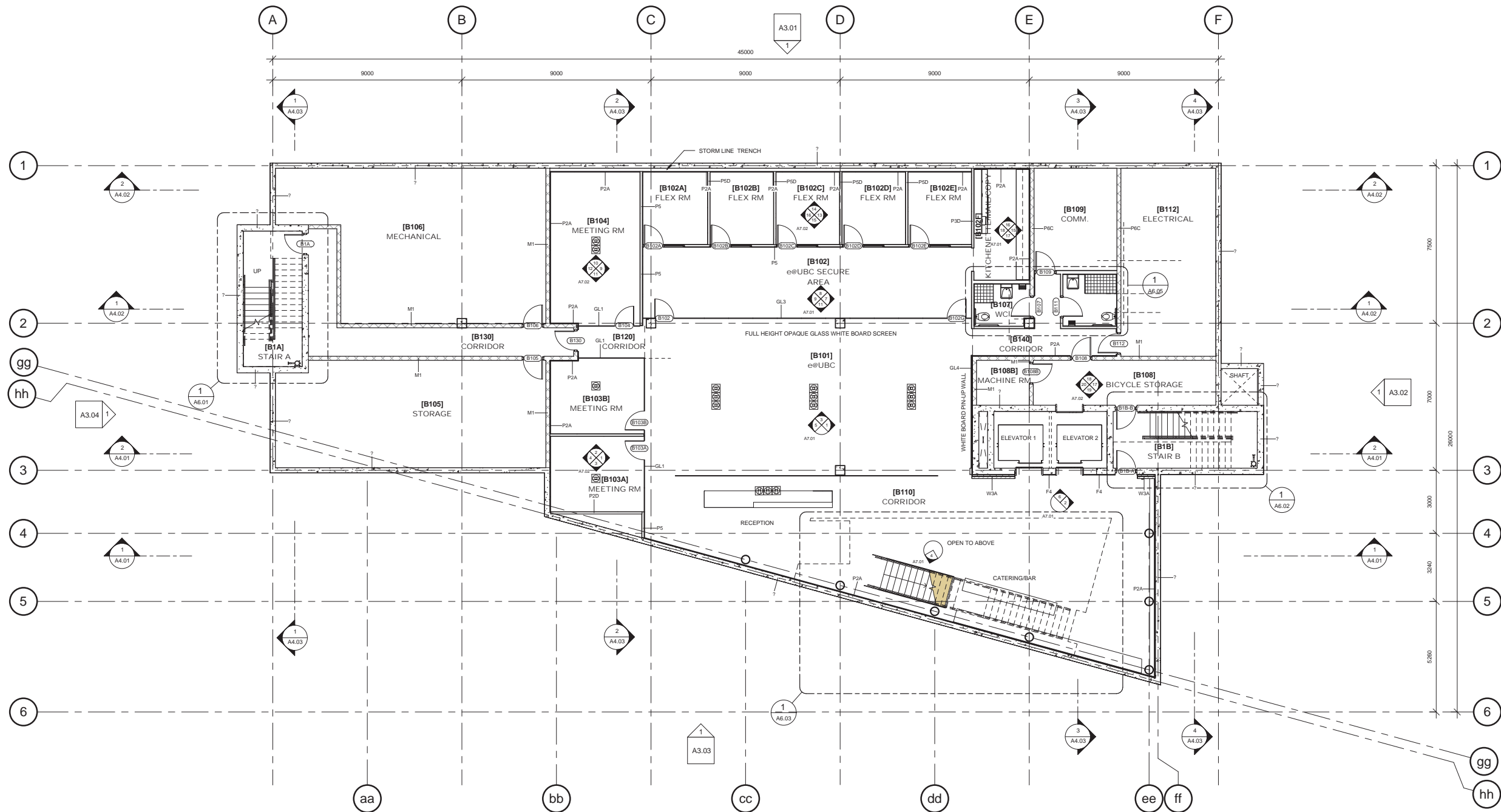
UBC PONDEROSA COMMONS
 ALUMNI CENTRE

University of British Columbia
 6488 University Boulevard
 VANCOUVER, BC

Sheet Title
 LOWER LEVEL PLAN

Job No. 1012
 Issue Date DECEMBER 2012
 Scale 1 : 100

A2.01



10/20/2012 2:28:53 PM

Copyright reserved. These drawings and the design contained therein or which may be inferred therefrom, and at all times remain, the exclusive property of Kuwabara Payne McKenna Blumberg | Hughes Condon Marler Architects | Architects in joint venture. Kuwabara Payne McKenna Blumberg | Hughes Condon Marler Architects | Architects in joint venture holds the copyright and ownership in the said drawings, which cannot be used for any purpose without the express written consent of Kuwabara Payne McKenna Blumberg | Hughes Condon Marler Architects | Architects in joint venture.

No. ISSUES	DATE

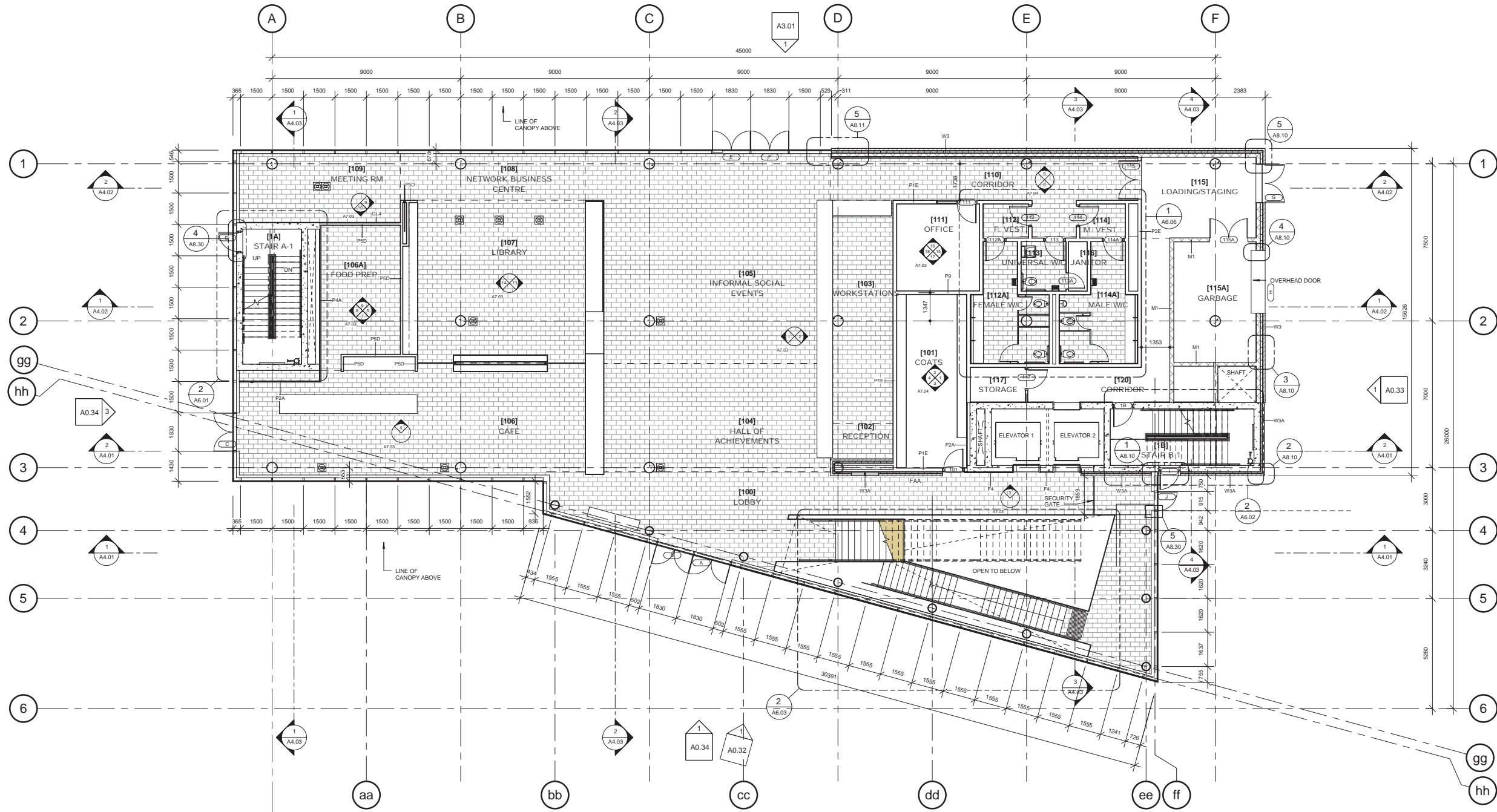
UBC PONDEROSA COMMONS
 ALUMNI CENTRE

University of British Columbia
 6488 University Boulevard
 VANCOUVER, BC

Sheet Title
 LEVEL 1 PLAN

Job No. 1012
 Issue Date DECEMBER 2012
 Scale 1 : 100

A2.02



Copyright reserved. These drawings and the design contained therein or which may be inferred therefrom are, and at all times remain, the exclusive property of Kuwabara Payne McKenna Blumberg | Hughes Condon Marler Architects | Architects in joint venture. Kuwabara Payne McKenna Blumberg | Hughes Condon Marler Architects | Architects in joint venture holds the copyright and ownership in the said drawings, which cannot be used for any purpose without the express written consent of Kuwabara Payne McKenna Blumberg | Hughes Condon Marler Architects | Architects in joint venture.

No. ISSUES	DATE
1 DD RESUBMISSION	DEC 20, 2012

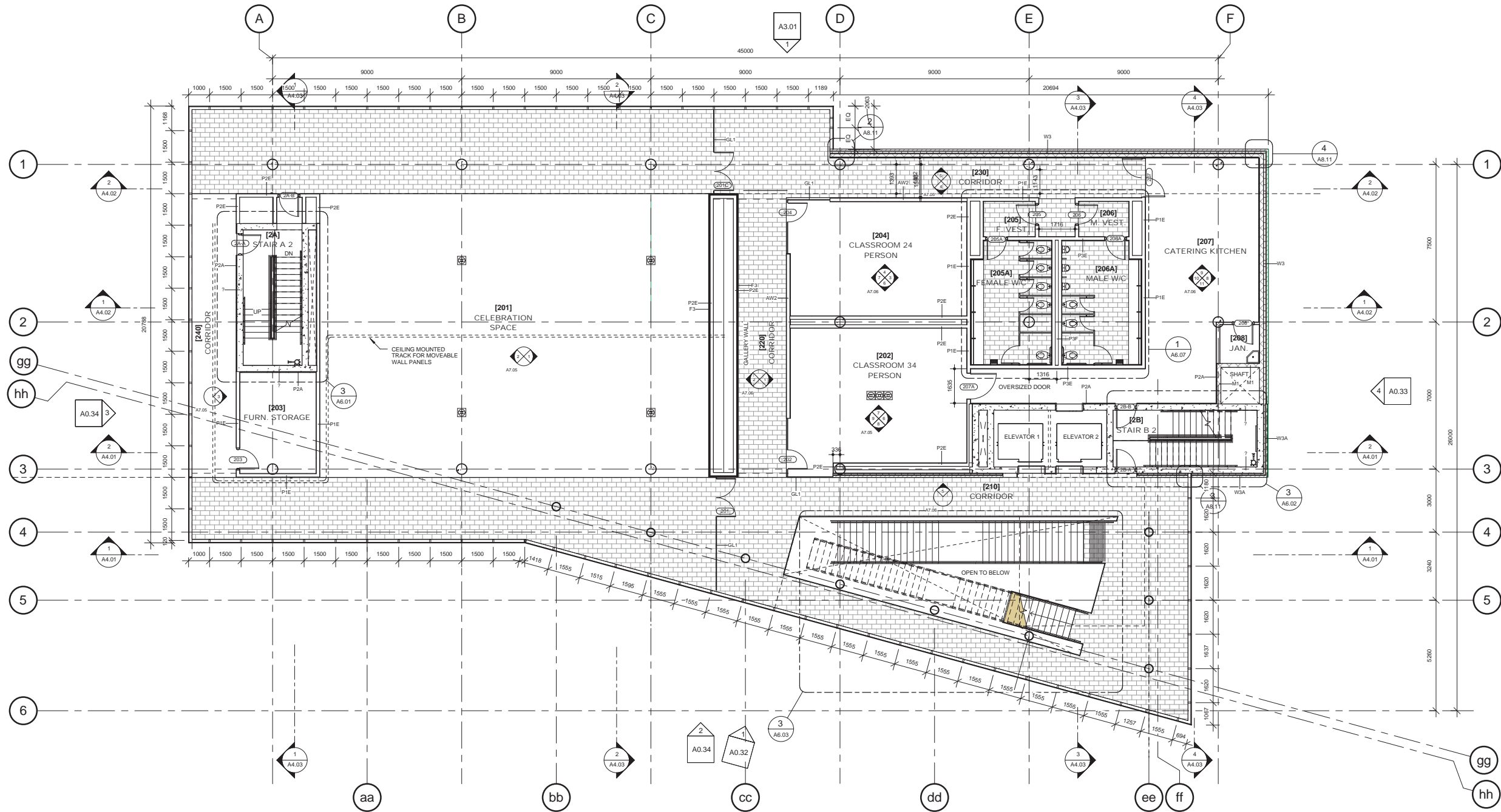
UBC PONDEROSA COMMONS
 ALUMNI CENTRE

University of British Columbia
 6488 University Boulevard
 VANCOUVER, BC

Sheet Title
 LEVEL 2 PLAN

Job No. 1012
 Issue Date DECEMBER 2012
 Scale 1 : 100

A2.03



12/20/2012 2:28:55 PM

Copyright reserved. These drawings and the design contained therein or which may be inferred therefrom are, and at all times remain, the exclusive property of Kuwabara Payne McKenna Blumberg | Hughes Condon Marler Architects | Architects in joint venture. Kuwabara Payne McKenna Blumberg | Hughes Condon Marler Architects | Architects in joint venture holds the copyright and ownership in the said drawings, which cannot be used for any purpose without the express written consent of Kuwabara Payne McKenna Blumberg | Hughes Condon Marler Architects | Architects in joint venture.

No.	ISSUES	DATE
1	DD RESUBMISSION	DEC 20, 2012

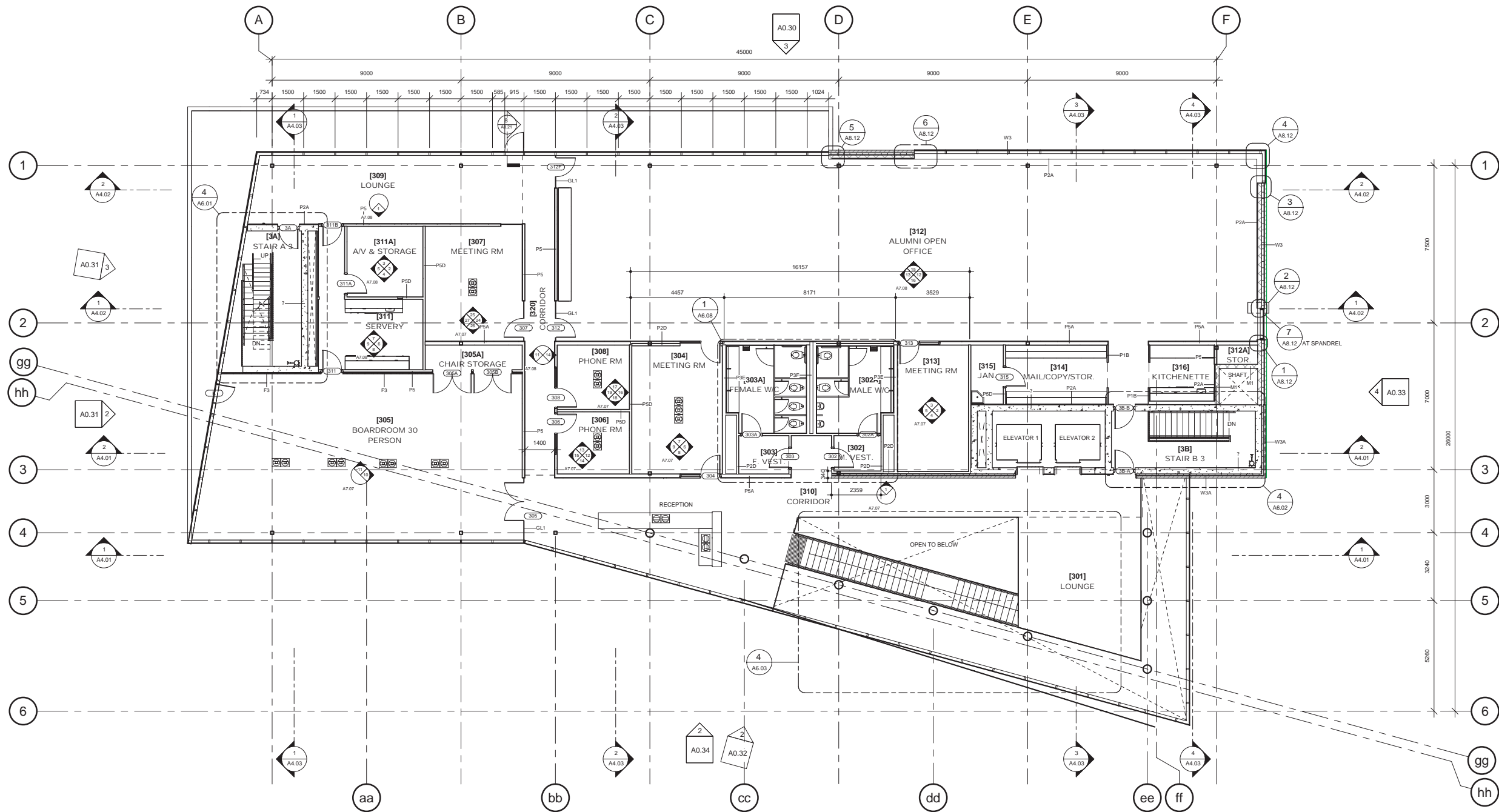
UBC PONDEROSA COMMONS
 ALUMNI CENTRE

University of British Columbia
 6488 University Boulevard
 VANCOUVER, BC

Sheet Title
 LEVEL 3 PLAN

Job No. 1012
 Issue Date DECEMBER 2012
 Scale 1 : 100

A2.04



Copyright reserved. These drawings and the design contained therein or which may be inferred therefrom are, and at all times remain, the exclusive property of Kuwabara Payne McKenna Blumberg | Hughes Condon Marler Architects | Architects in joint venture. Kuwabara Payne McKenna Blumberg | Hughes Condon Marler Architects | Architects in joint venture holds the copyright and ownership in the said drawings, which cannot be used for any purpose without the express written consent of Kuwabara Payne McKenna Blumberg | Hughes Condon Marler Architects | Architects in joint venture.

No.	ISSUES	DATE
1	DD RESUBMISSION	DEC 20, 2012

UBC PONDEROSA COMMONS
 ALUMNI CENTRE

University of British Columbia
 6488 University Boulevard
 VANCOUVER, BC

Sheet Title
 ROOF PLAN

Job No. 1012
 Issue Date DECEMBER 2012
 Scale 1 : 100

A2.05

