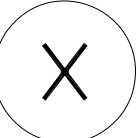
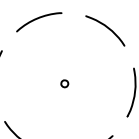
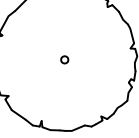


**LEGEND**

-  EXISTING TREE TO BE REMOVED
  - 370MM OAK
  - 470 MM OAK
  - 110 MM CEDAR
  - 170 MM CEDAR
-  EXISTING TREE TO BE RETAINED
-  EXISTING LARGE ELM TREE TO BE RETAINED

**NOTE:**  
 ADDITIONAL EXISTING TREES MAY BE REMOVED DURING THE DEVELOPMENT OF THE ALUMNI CENTRE ARRIVAL PLAZA. THE DETAILED DESIGN, CONFIGURATION, AND DIMENSIONS OF THE ARRIVAL PLAZA TO BE DETERMINED AS PART OF A SEPARATE UBC PUBLIC REALM PROJECT.

| Rev. | Date           | Issued                                    |
|------|----------------|---|
| 1    | SEPT. 28, 2010 | ISSUED FOR DEVELOPMENT PERMIT APPLICATION |

**Architects**

**KPMB | HCMA**

Kuswata Pijpe McKenna Burnberg Architects | Hughes Gordon Water Architects

122 King Street West | Suite 805 - 100 West 2nd Avenue  
 Vancouver, BC V6C 1K5 | Vancouver, BC V6C 1A6  
 Tel: +1-604-681-8166 | Tel: 604-732-8820  
 Fax: +1-604-681-8443 | Fax: 604-732-8895

**Consultants:**

UBC Properties Trust

Structural Engineers - Glotman Simpson  
 Mechanical Engineers - MIM Group  
 Electrical Engineers - Starac Consulting  
 Landscape Architects - Phillips Farvaag Smalberg  
 Code Consultant - LMPG  
 Civil Engineers - KEMP Engineering

**Project**

**UBC ALUMNI BUILDING**

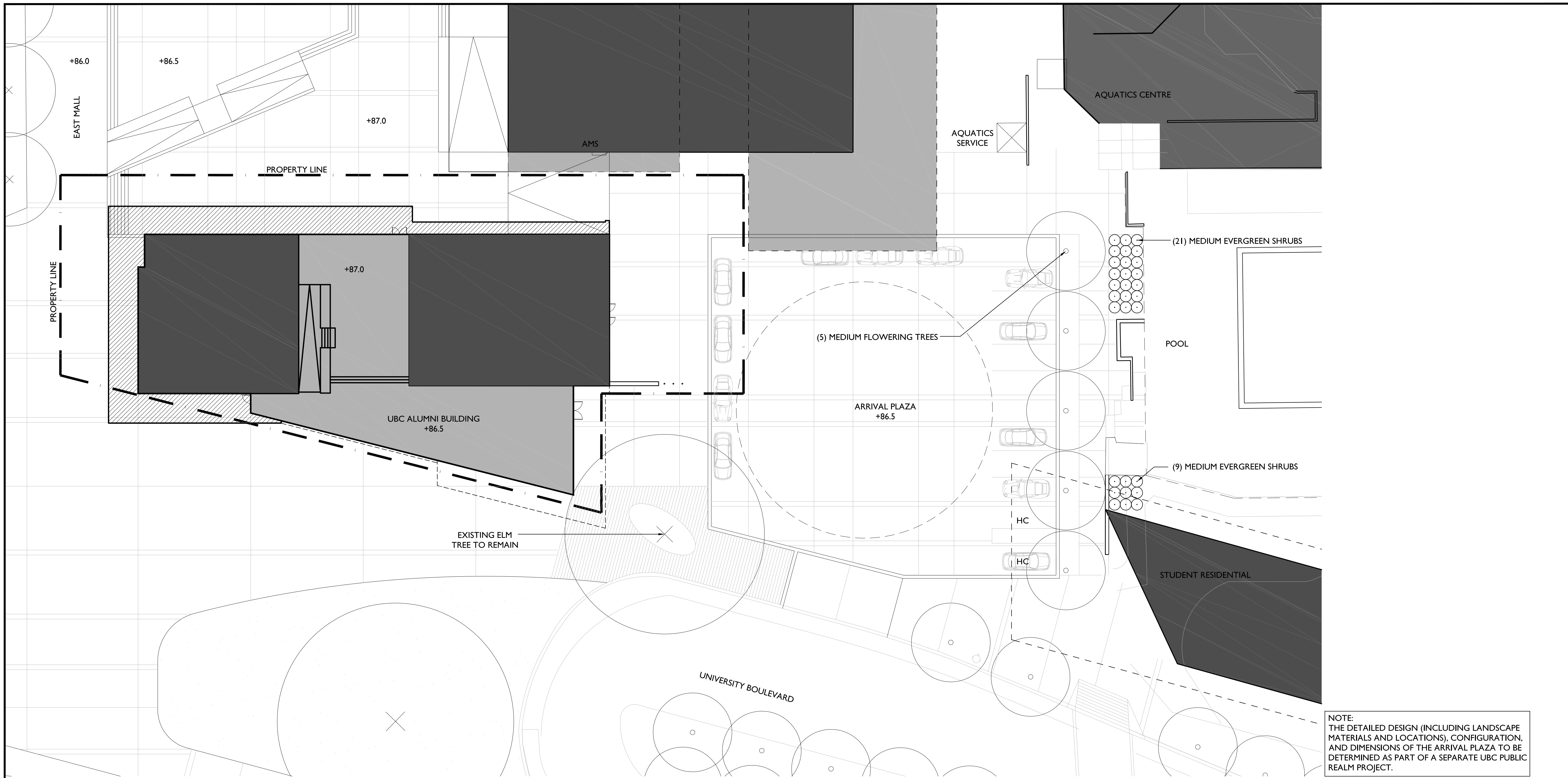
University Blvd.  
 Vancouver, B.C.

**Drawing Title**

**TREE SURVEY**

Scale: 1:250  
 Drawn By: NT  
 Reviewed By:  
 Project Number: UBC Alumni - 1012  
 Plot Date: SEPT. 28, 2010  
 Drawing Number:

**A002**



NOTE:  
THE DETAILED DESIGN (INCLUDING LANDSCAPE MATERIALS AND LOCATIONS), CONFIGURATION, AND DIMENSIONS OF THE ARRIVAL PLAZA TO BE DETERMINED AS PART OF A SEPARATE UBC PUBLIC REALM PROJECT.

| Rev. | Date           | Issued                                    |
|------|----------------|---|
| 1    | SEPT. 28, 2010 | ISSUED FOR DEVELOPMENT PERMIT APPLICATION |

**Architects**  
**KPMB | HCMA**  
 Kowalewski Poirer McKenna Burnberg Architects  
 Hughes Gordon Miller Architects  
 122 King Street West  
 Toronto, Ontario  
 Tel: +1-416-597-5166  
 Fax: +1-416-598-3645

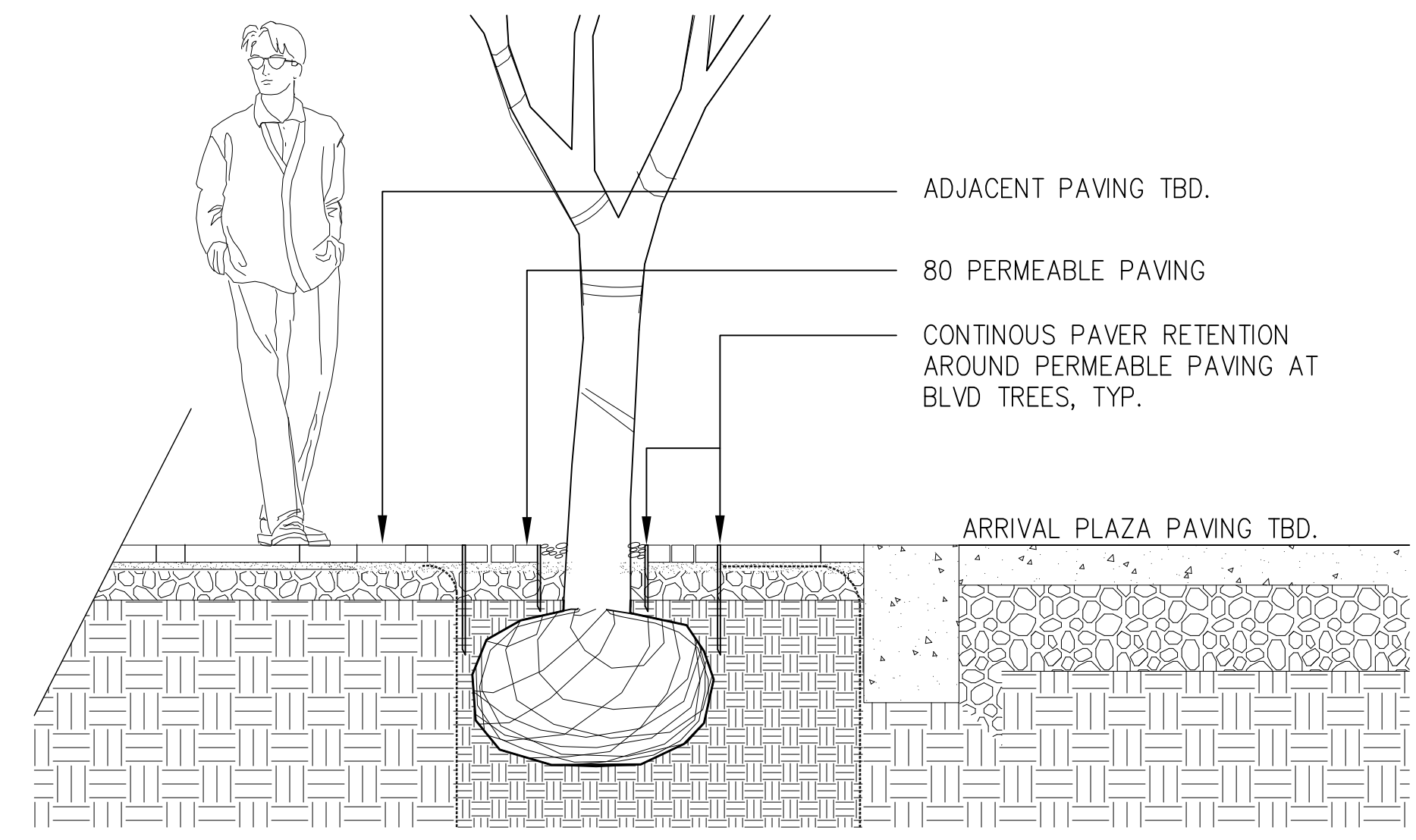
**Consultants:**  
 UBC Properties Trust  
 Structural Engineers - Glotman Simpson  
 Mechanical Engineers - MUM Group  
 Electrical Engineers - Stanek Consulting  
 Landscape Architects - Phillips Forevaag Smalberg  
 Code Consultant - LMPG  
 Civil Engineers - KEMP Engineering

**Project**  
**UBC ALUMNI BUILDING**  
 University Blvd.  
 Vancouver, B.C.

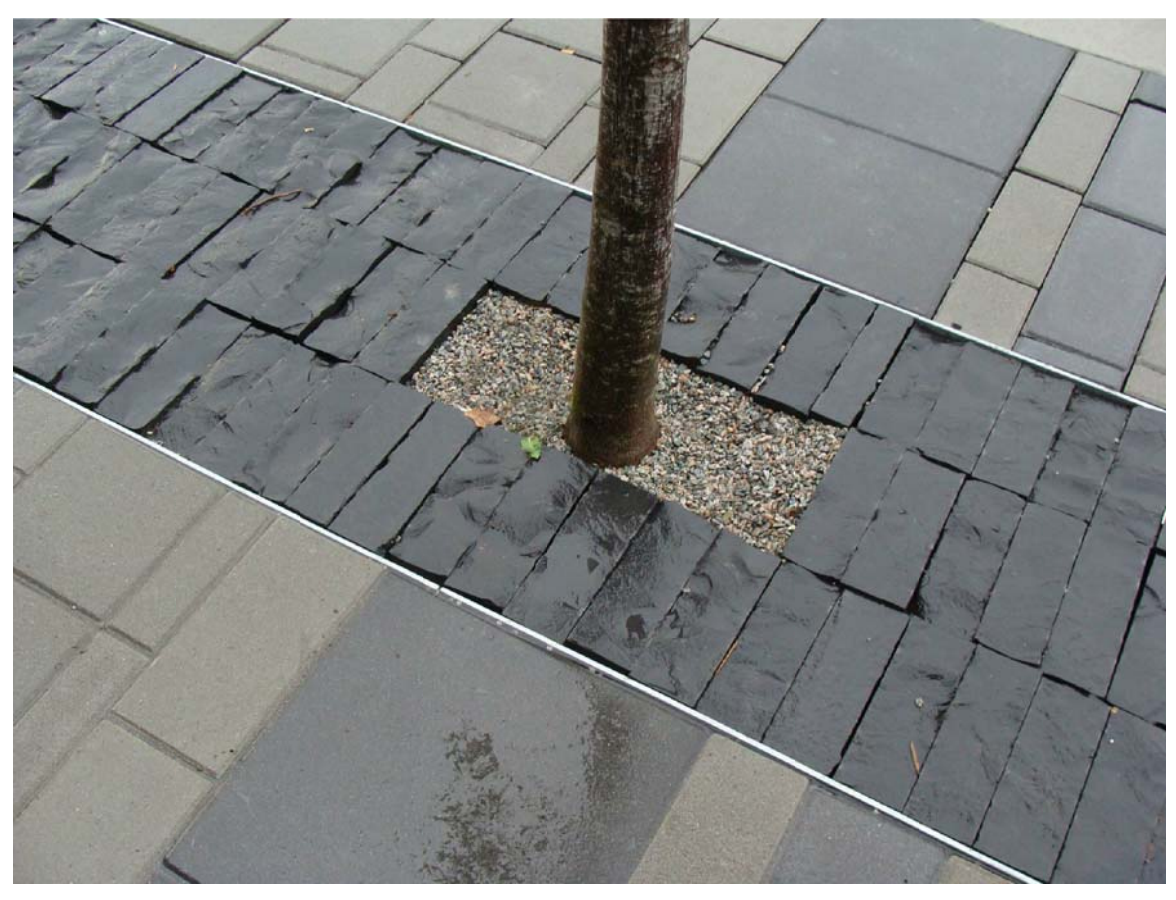
**Drawing Title**  
**PLANTING PLAN**

Scale: 1:200  
 Drawn By: NT  
 Reviewed By:  
 Project Number: UBC Alumni - 1012  
 Plot Date: SEPT. 28, 2010  
 Drawing Number:

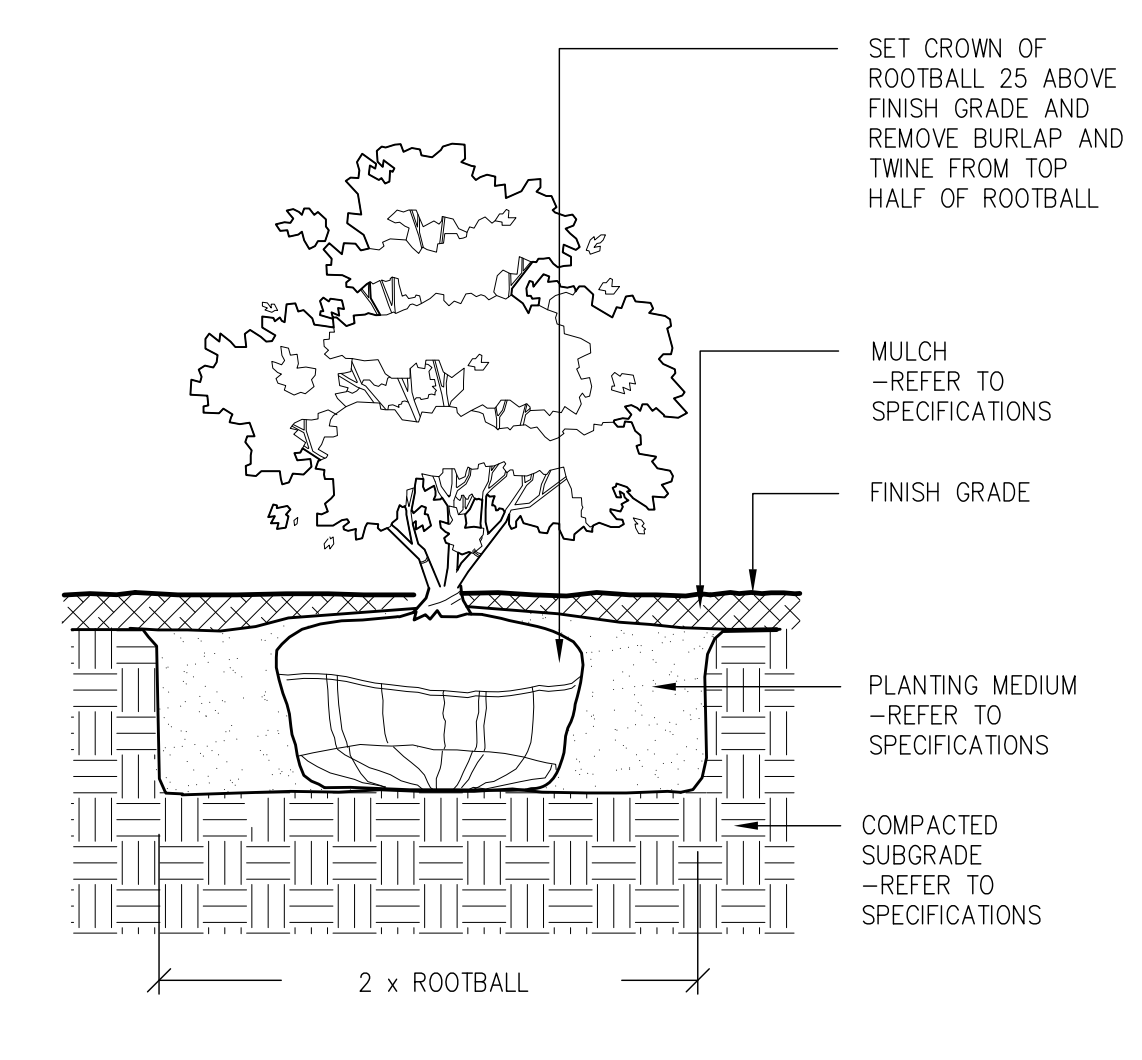
**A004**



**1 TREE BASE PAVING**  
 A004 SCALE: 1:20



UNIVERSITY BOULEVARD PAVING BAND DETAIL PRECEDENT



**2 TYPICAL SHRUB PLANTING**  
 A004 SCALE: 1:10