

ISSUED FOR

1 12/7/12 Development Permit Application

FOR INFORMATION ONLY  
NOT FOR CONSTRUCTION

**METRIC**

THIS DRAWING IS COPYRIGHTED AND MUST NOT BE USED, REPRODUCED, OR REVISED WITHOUT WRITTEN PERMISSION. ALL DIMENSIONS ARE IN MILLIMETERS UNLESS OTHERWISE NOTED. VERIFY DIMENSIONS. DO NOT SCALE THIS DRAWING.

REPORT INCONSISTENCIES AND OMISSIONS TO THE CONSULTANT FOR CLARIFICATION BEFORE COMMENCING WITH THE WORK. DEVIATIONS FROM THE CONTRACT DOCUMENTS WITHOUT WRITTEN APPROVAL FROM THE CONSULTANT ARE SUBJECT TO CORRECTION AT THE CONTRACTOR'S EXPENSE.

**ARCHITECT & PRIME CONSULTANT**

DIALOG BC ARCHITECTURE ENGINEERING  
INTERIOR DESIGN PLANNING INC.  
406 - 611 ALEXANDER STREET  
VANCOUVER, BC, V6A 1E1  
Tel: (604) 255-1169 Fax: (604) 255-1790  
design@designdialog.ca

**MECHANICAL ENGINEER**

FVB ENERGY INC.  
4445 Lougheed Highway  
BURNABY, BC, V5C 0E4  
Tel: (604) 689-3410 Fax: (604) 689-3415

**STRUCTURAL ENGINEER**

FAST + EPP  
201 - 1672 WEST 1ST AVENUE  
VANCOUVER, BC, V6J 1G1  
Tel: (604) 731-7412 Fax: (604) 731-7620

**ELECTRICAL ENGINEER**

APPLIED ENGINEERING SOLUTIONS LTD.  
600 - 905 WEST PENDER STREET  
VANCOUVER, BC, V6C 1L6  
Tel: (604) 569-6500 Fax: (604) 569-6501

**LANDSCAPE ARCHITECT**

PERRY + ASSOCIATES  
200-1558 WEST 6TH AVE  
VANCOUVER, BC, V6J 1R2  
Tel: (604) 738-4118 Fax: (604) 738-4116

SEAL

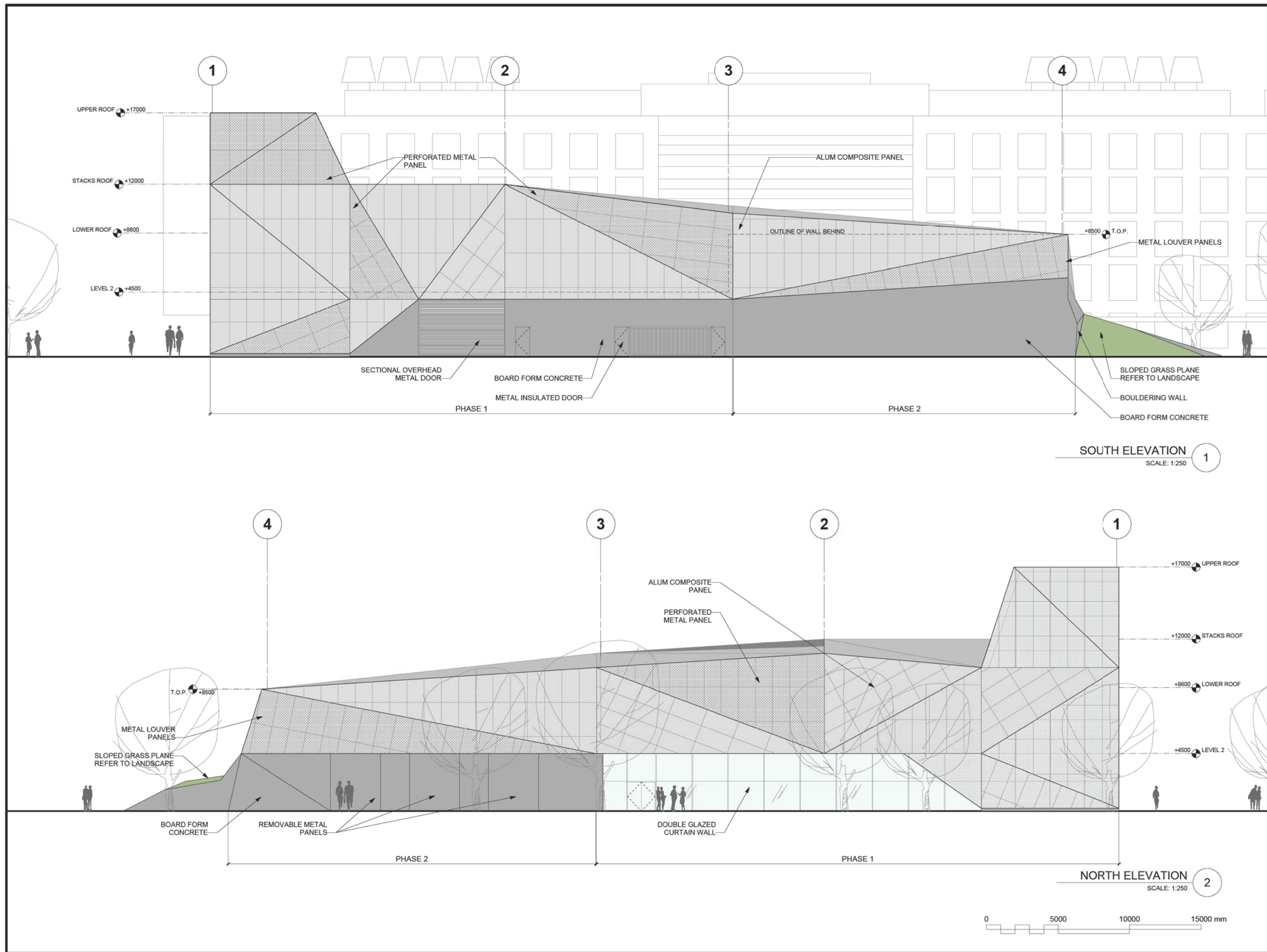
**UBC DISTRICT  
ENERGY CENTRE**

**ELEVATIONS**

DRAWN:  
PLOT DATE: 12/7/12

CHECKED:

# A401



**SOUTH ELEVATION**  
SCALE: 1:250

**NORTH ELEVATION**  
SCALE: 1:250

ISSUED FOR

1 12/7/12 Development Permit Application

FOR INFORMATION ONLY  
NOT FOR CONSTRUCTION

**METRIC**

THIS DRAWING IS COPYRIGHTED AND MUST NOT BE USED, REPRODUCED, OR REVISED WITHOUT WRITTEN PERMISSION.

ALL DIMENSIONS ARE IN MILLIMETERS UNLESS OTHERWISE NOTED. VERIFY DIMENSIONS. DO NOT SCALE THIS DRAWING.

REPORT INCONSISTENCIES AND OMISSIONS TO THE CONSULTANT FOR CLARIFICATION BEFORE COMMENCING WITH THE WORK.

DEVIATIONS FROM THE CONTRACT DOCUMENTS WITHOUT WRITTEN APPROVAL FROM THE CONSULTANT ARE SUBJECT TO CORRECTION AT THE CONTRACTOR'S EXPENSE.

**ARCHITECT & PRIME CONSULTANT**

DIALOG BC ARCHITECTURE ENGINEERING  
INTERIOR DESIGN PLANNING INC.  
406 - 611 ALEXANDER STREET  
VANCOUVER, BC, V6A 1E1  
Tel: (604) 255-1169 Fax: (604) 255-1790  
design@designdialog.ca

**MECHANICAL ENGINEER**

FVB ENERGY INC.  
4445 Lougheed Highway  
BURNABY, BC, V5C 0E4  
Tel: (604) 689-3410 Fax: (604) 689-3415

**STRUCTURAL ENGINEER**

FAST + EPP  
201 - 1672 WEST 1ST AVENUE  
VANCOUVER, BC, V6J 1G1  
Tel: (604) 731-7412 Fax: (604) 731-7620

**ELECTRICAL ENGINEER**

APPLIED ENGINEERING SOLUTIONS LTD.  
600 - 905 WEST PENDER STREET  
VANCOUVER, BC, V6C 1L6  
Tel: (604) 569-6500 Fax: (604) 569-6501

**LANDSCAPE ARCHITECT**

PERRY + ASSOCIATES  
200-1558 WEST 6TH AVE  
VANCOUVER, BC, V6J 1R2  
Tel: (604) 738-4118 Fax: (604) 738-4116

SEAL

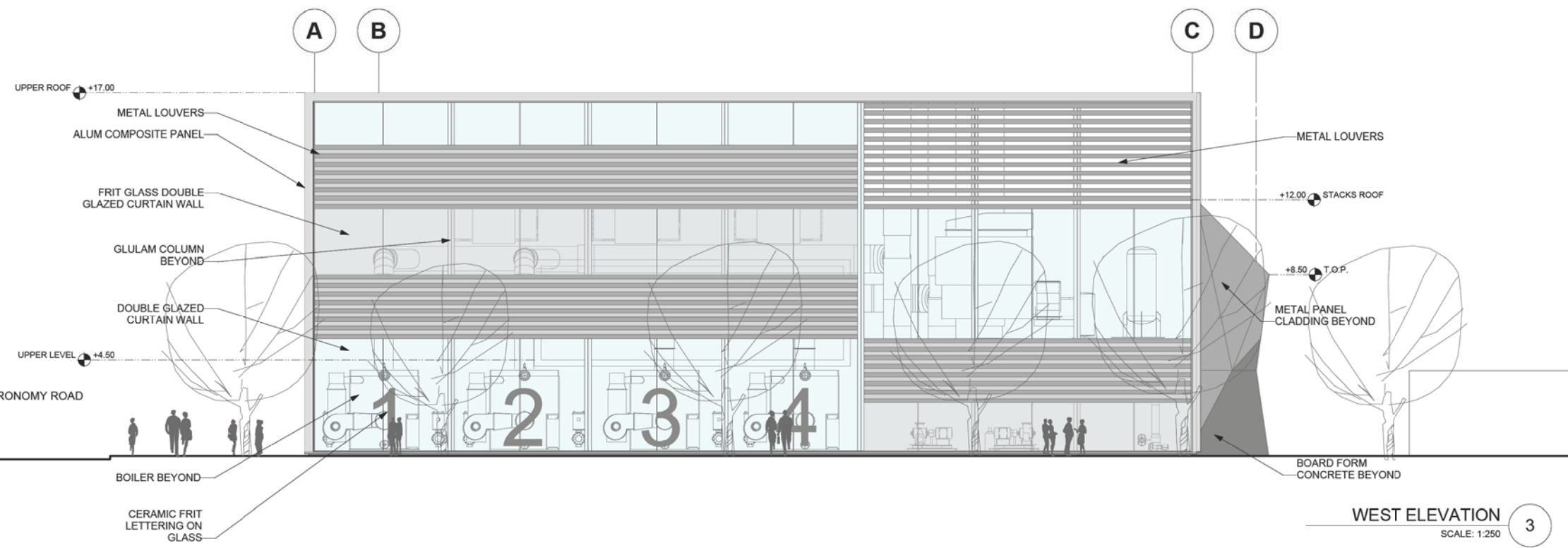
**UBC DISTRICT ENERGY CENTRE**

**ELEVATIONS**

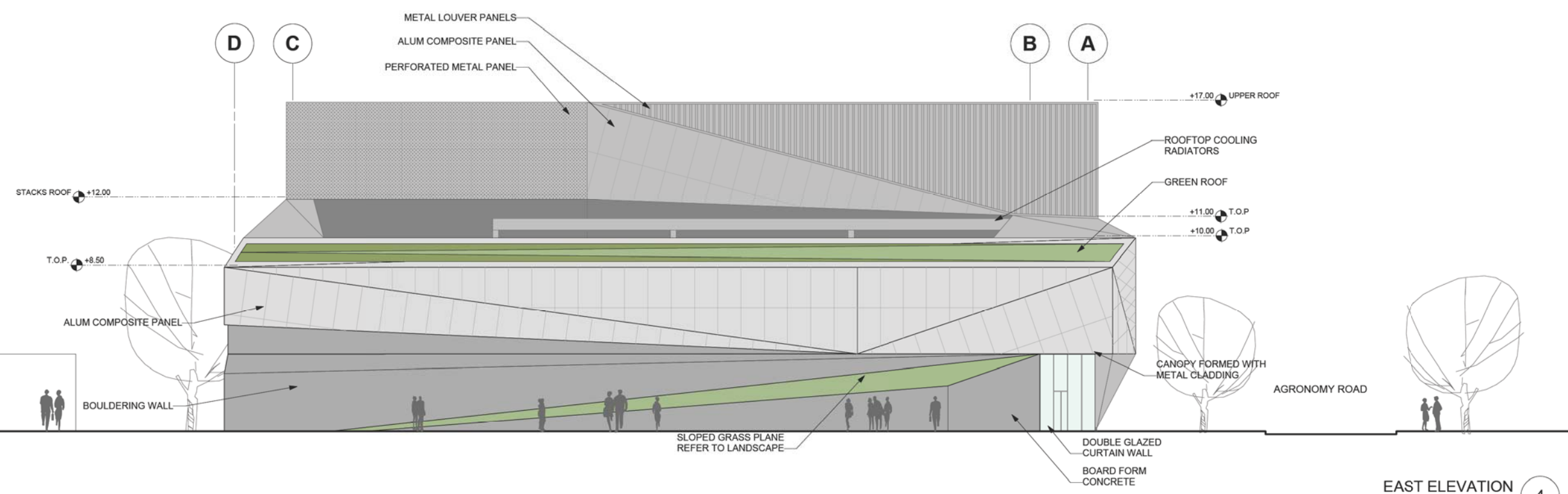
DRAWN:  
PLOT DATE: 12/7/12

CHECKED:

# A402



**WEST ELEVATION** 3  
SCALE: 1:250



**EAST ELEVATION** 4  
SCALE: 1:250





ISSUED FOR

A 12/7/12 Development Permit Application

FOR INFORMATION ONLY  
NOT FOR CONSTRUCTION

**METRIC**

THIS DRAWING IS COPYRIGHTED AND MUST NOT BE USED, REPRODUCED, OR REVISED WITHOUT WRITTEN PERMISSION. ALL DIMENSIONS ARE IN MILLIMETERS UNLESS OTHERWISE NOTED. VERIFY DIMENSIONS. DO NOT SCALE THIS DRAWING.

REPORT INCONSISTENCIES AND OMISSIONS TO THE CONSULTANT FOR CLARIFICATION BEFORE COMMENCING WITH THE WORK. DEVIATIONS FROM THE CONTRACT DOCUMENTS WITHOUT WRITTEN APPROVAL FROM THE CONSULTANT ARE SUBJECT TO CORRECTION AT THE CONTRACTOR'S EXPENSE.

**ARCHITECT & PRIME CONSULTANT**

DIALOG BC ARCHITECTURE ENGINEERING  
INTERIOR DESIGN PLANNING INC.  
406 - 611 ALEXANDER STREET  
VANCOUVER, BC, V6A 1E1  
Tel: (604) 255-1169 Fax: (604) 255-1790  
design@designdialog.ca

**MECHANICAL ENGINEER**

FVB ENERGY INC.  
4445 Lougheed Highway  
BURNABY, BC, V5C 0E4  
Tel: (604) 689-3410 Fax: (604) 689-3415

**STRUCTURAL ENGINEER**

FAST + EPP  
201 - 1672 WEST 1ST AVENUE  
VANCOUVER, BC, V6J 1G1  
Tel: (604) 731-7412 Fax: (604) 731-7620

**ELECTRICAL ENGINEER**

APPLIED ENGINEERING SOLUTIONS LTD.  
600 - 905 WEST PENDER STREET  
VANCOUVER, BC, V6C 1L6  
Tel: (604) 569-6500 Fax: (604) 569-6501

**LANDSCAPE ARCHITECT**

PERRY + ASSOCIATES  
200-1558 WEST 6TH AVE  
VANCOUVER, BC, V6J 1R2  
Tel: (604) 736-4118 Fax: (604) 736-4116

**SEAL**

**UBC DISTRICT ENERGY CENTRE**

**SECTION A & B**

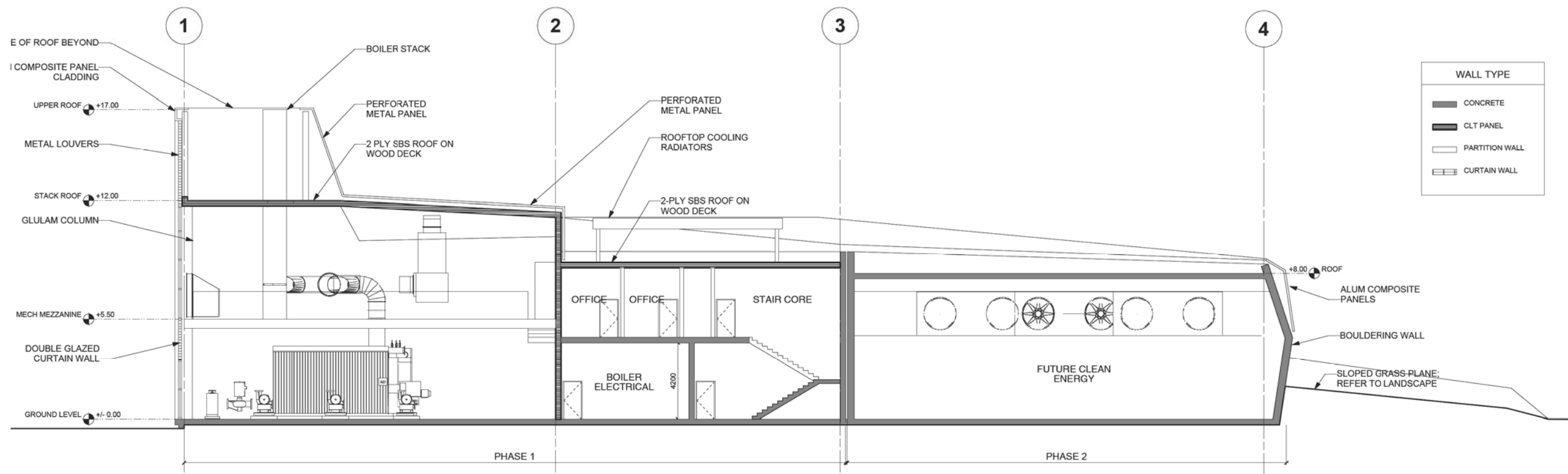
DRAWN: AML  
PLOT DATE: 12/7/12

CHECKED:

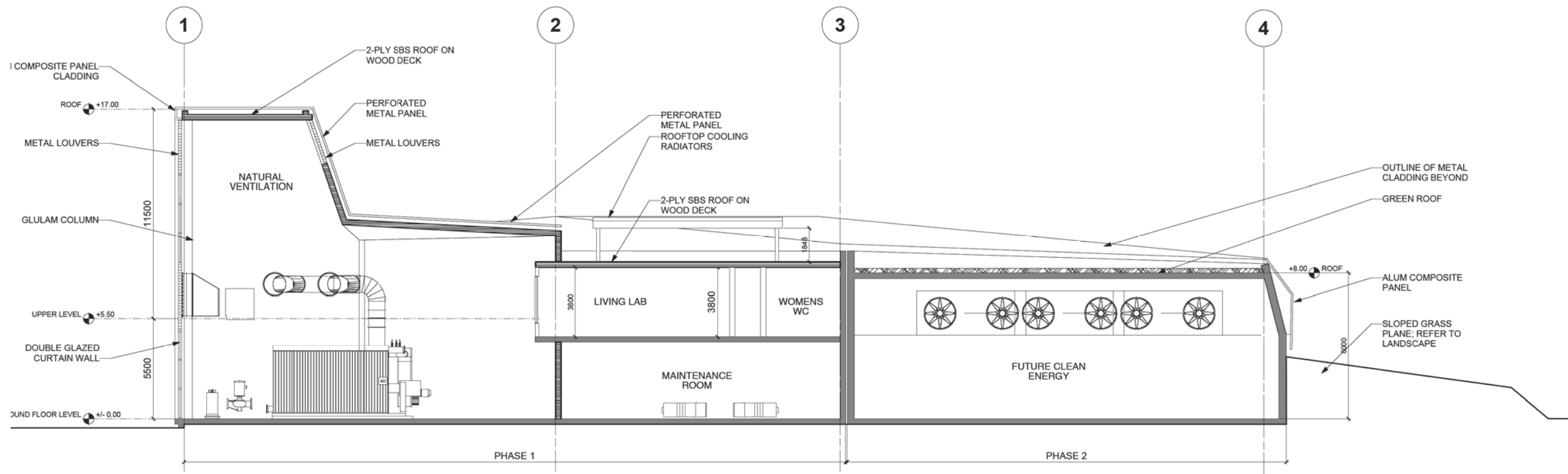
# A501

04133V

04133V\_Sections\_UBC DEC.vwx



**SECTION B**  
SCALE: 1:125



**SECTION A**  
SCALE: 1:125



ISSUED FOR

A 12/7/12 Development Permit Application

FOR INFORMATION ONLY  
NOT FOR CONSTRUCTION

**METRIC**

THIS DRAWING IS COPYRIGHTED AND MUST NOT BE USED, REPRODUCED, OR REVISED WITHOUT WRITTEN PERMISSION. ALL DIMENSIONS ARE IN MILLIMETERS UNLESS OTHERWISE NOTED. VERIFY DIMENSIONS. DO NOT SCALE THIS DRAWING.

REPORT INCONSISTENCIES AND OMISSIONS TO THE CONSULTANT FOR CLARIFICATION BEFORE COMMENCING WITH THE WORK. DEVIATIONS FROM THE CONTRACT DOCUMENTS WITHOUT WRITTEN APPROVAL FROM THE CONSULTANT ARE SUBJECT TO CORRECTION AT THE CONTRACTOR'S EXPENSE.

**ARCHITECT & PRIME CONSULTANT**

DIALOG BC ARCHITECTURE ENGINEERING  
INTERIOR DESIGN PLANNING INC.  
406 - 611 ALEXANDER STREET  
VANCOUVER, BC, V6A 1E1  
Tel: (604) 255-1169 Fax: (604) 255-1790  
design@designdialog.ca

**MECHANICAL ENGINEER**

FVB ENERGY INC.  
4445 Lougheed Highway  
BURNABY, BC, V5C 0E4  
Tel: (604) 689-3410 Fax: (604) 689-3415

**STRUCTURAL ENGINEER**

FAST + EPP  
201 - 1672 WEST 1ST AVENUE  
VANCOUVER, BC, V6J 1G1  
Tel: (604) 731-7412 Fax: (604) 731-7620

**ELECTRICAL ENGINEER**

APPLIED ENGINEERING SOLUTIONS LTD.  
600 - 905 WEST PENDER STREET  
VANCOUVER, BC, V6C 1L6  
Tel: (604) 569-6500 Fax: (604) 569-6501

**LANDSCAPE ARCHITECT**

PERRY + ASSOCIATES  
200-1558 WEST 6TH AVE  
VANCOUVER, BC, V6J 1R2  
Tel: (604) 738-4118 Fax: (604) 738-4116

SEAL

**UBC DISTRICT  
ENERGY CENTRE**

**SECTION C & D**

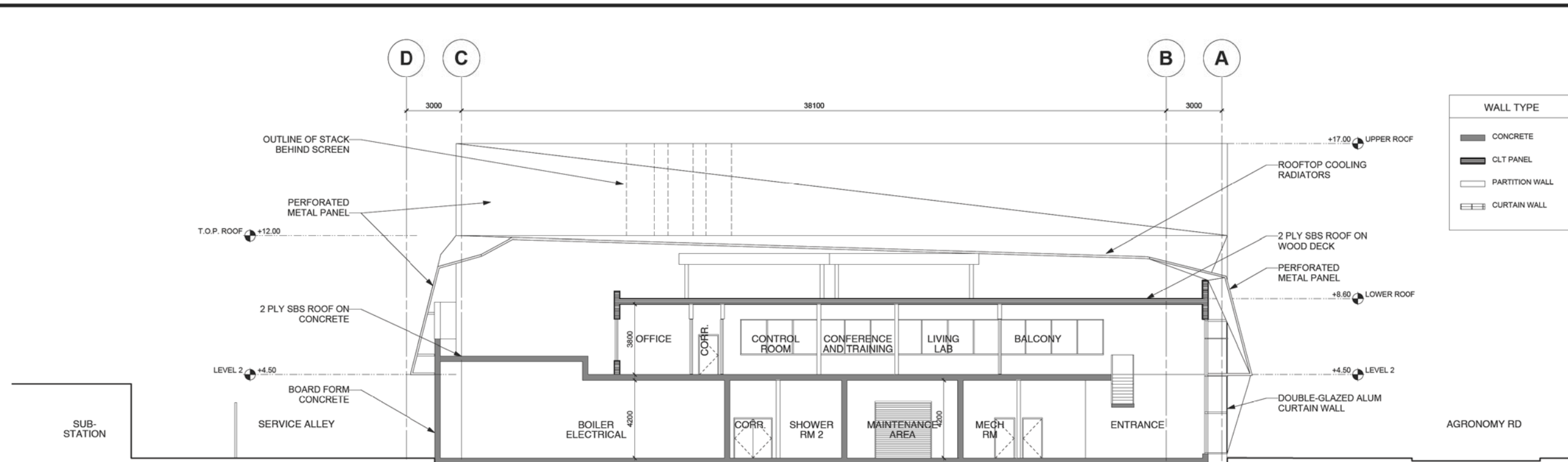
DRAWN: AML  
PLOT DATE: 12/7/12

CHECKED:

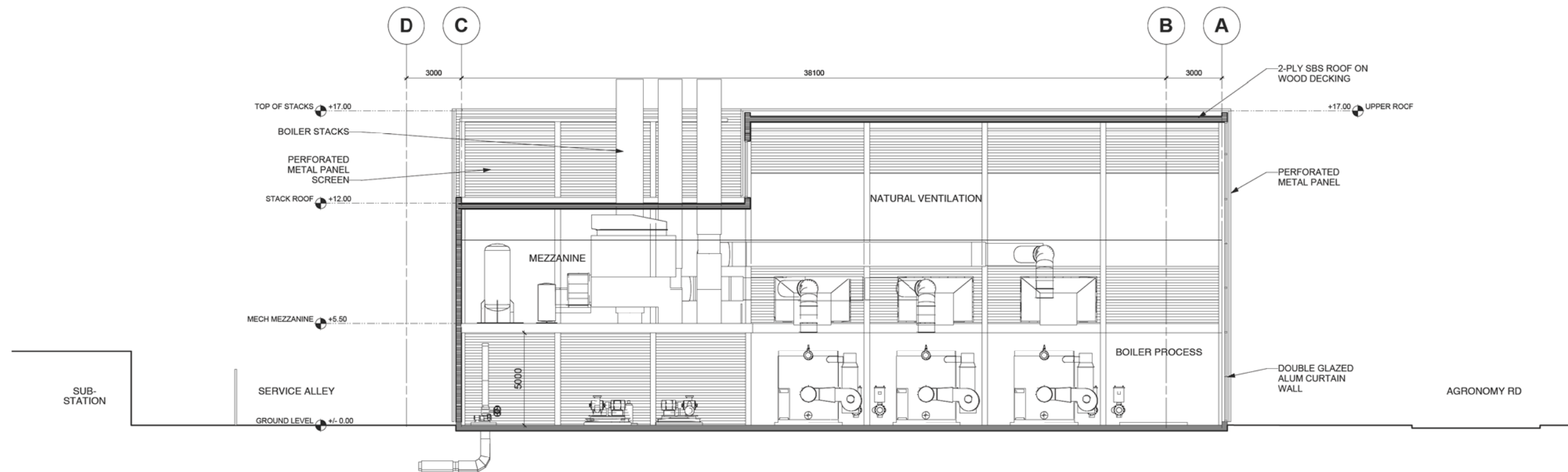
# A502

04133V

04133V\_Sections\_UBC DEC.vwx



**SECTION D**  
SCALE: 1:125



**SECTION C**  
SCALE: 1:125

