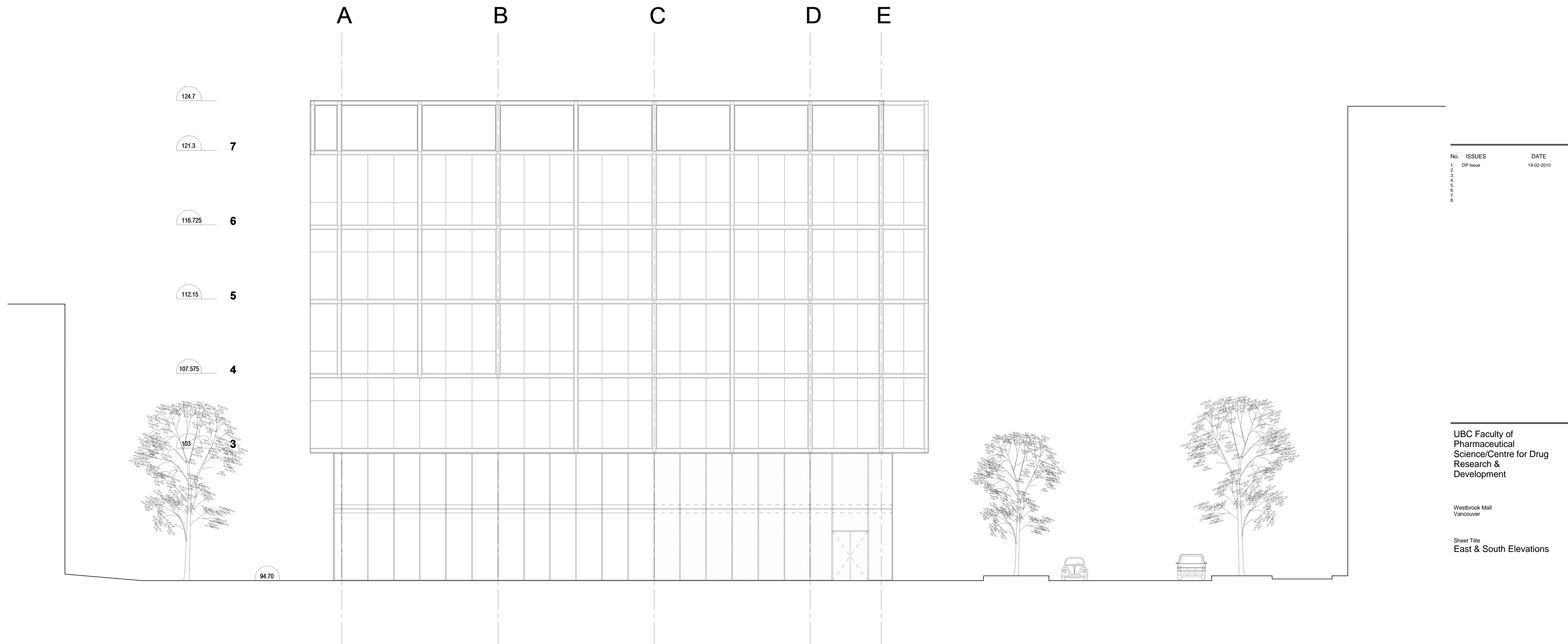


Copyright reserved. These drawings and the design contained therein or which may be referred thereto are, and as all these remain, the exclusive property of Saucier + Perrotte Architectes | Hughes Condon Marler Architects | Architects in joint venture. Saucier + Perrotte Architectes | Hughes Condon Marler Architects | Architects in joint venture holds the copyright and ownership in the said drawings, which cannot be used for any purpose without the express written consent of Saucier + Perrotte Architectes | Hughes Condon Marler Architects | Architects in joint venture.

2 South Elevation  
1:100



No.	ISSUES	DATE
1.	DR Issue	19-02-2010
2.		
3.		
4.		
5.		
6.		
7.		
8.		

UBC Faculty of  
Pharmaceutical  
Science/Centre for Drug  
Research &  
Development

Westbrook Mall  
Vancouver

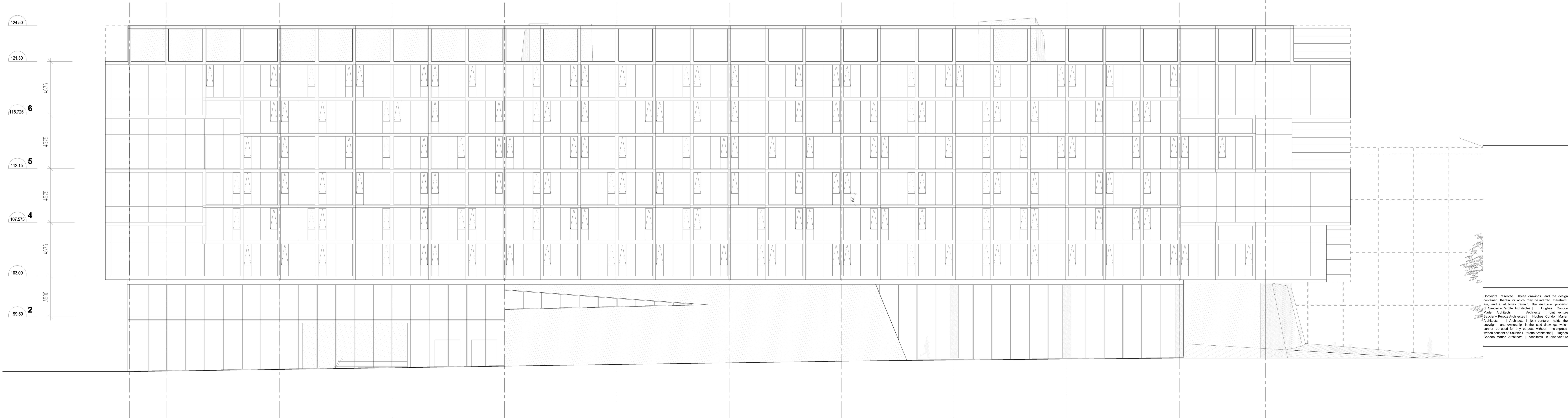
Sheet Title  
East & South Elevations

Drawn S+P / HCMA  
Job No. 0936  
Checked BU  
Date 19-02-2010  
Scale 1:100

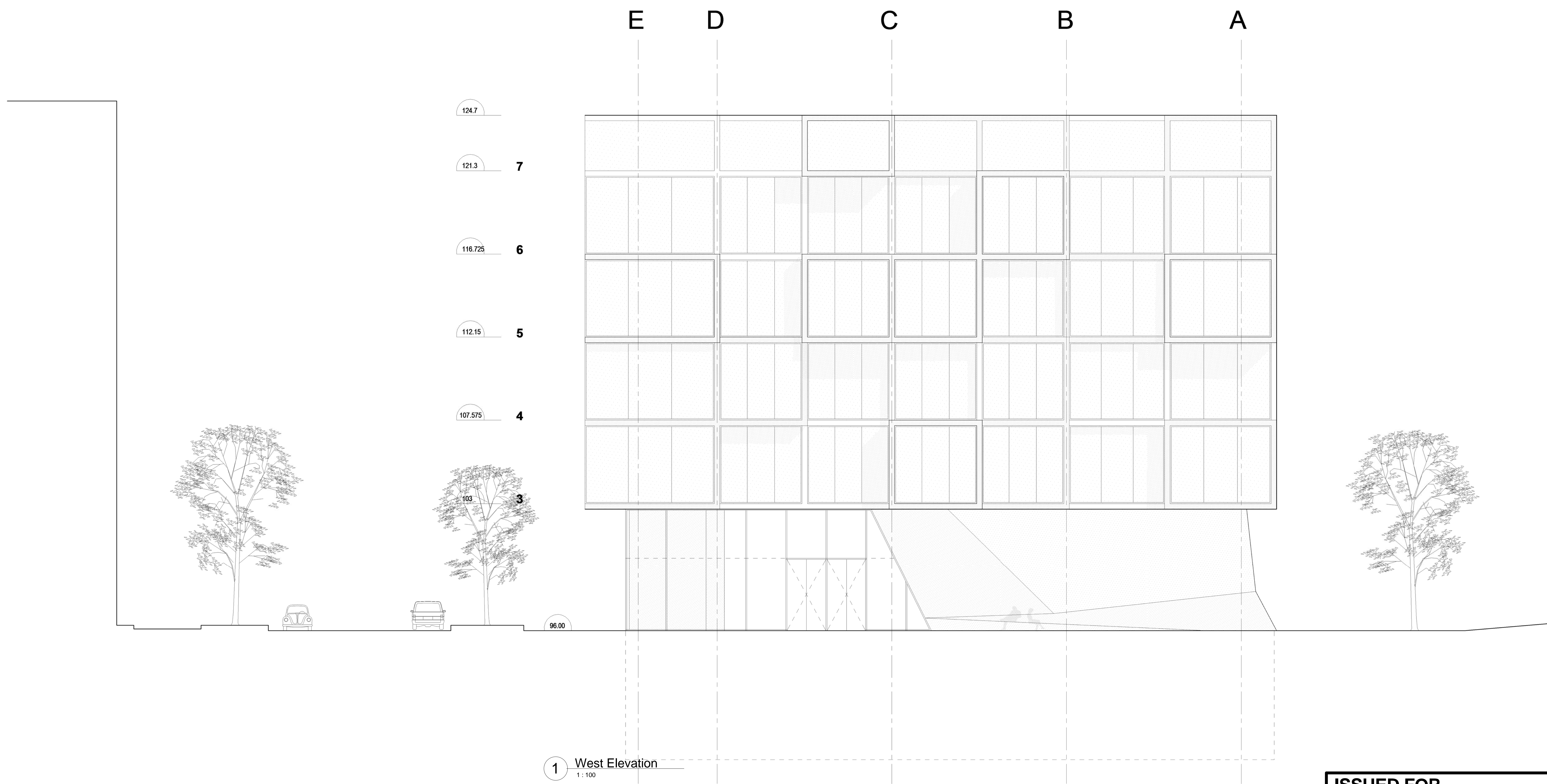
ISSUED FOR  
DEVELOPMENT PERMIT  
APPLICATION

A4.1





2 North Elevation  
1:100



1 West Elevation  
1:100

No.	ISSUES	DATE
1.	DR Issue	19-02-2010
2.		
3.		
4.		
5.		
6.		
7.		
8.		

UBC Faculty of  
Pharmaceutical  
Science/Centre for Drug  
Research &  
Development

Westbrook Mall  
Vancouver

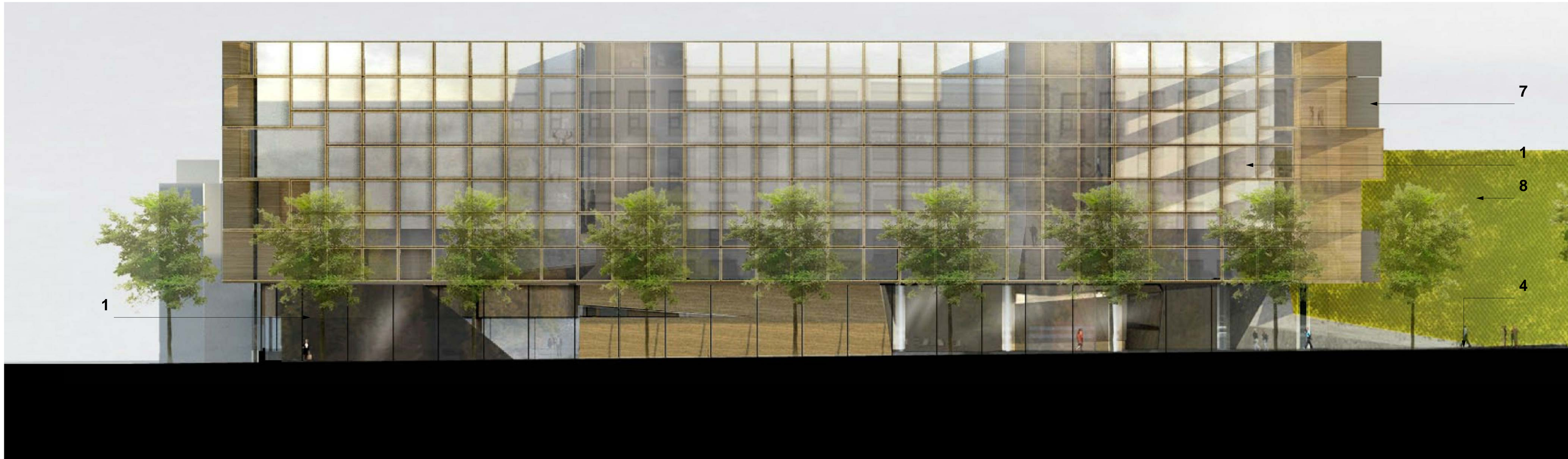
Sheet Title  
West & North Elevations

Drawn: S+P/HOMA  
Job No: 0936  
Checked: BU  
Date: 19-02-2010  
Scale: 1:100

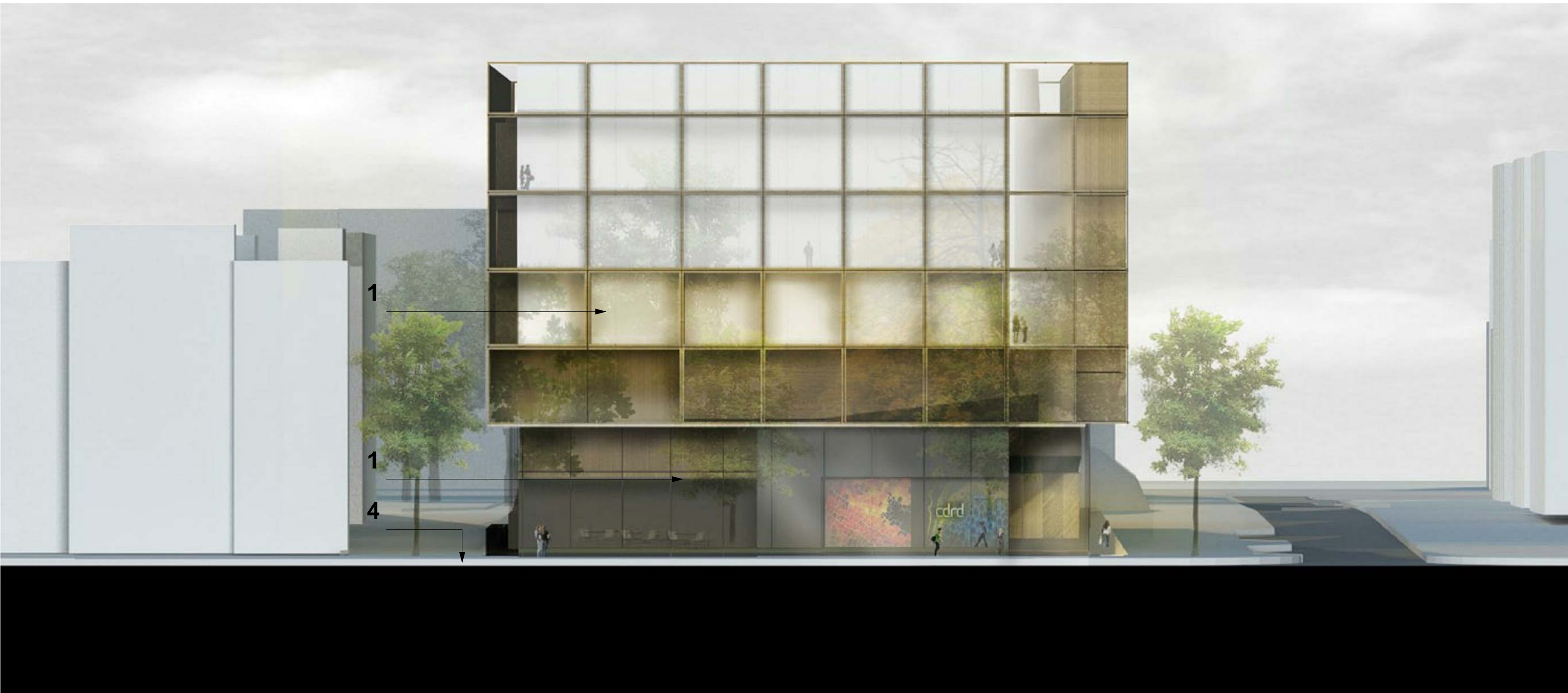
ISSUED FOR  
DEVELOPMENT PERMIT  
APPLICATION

A4.2



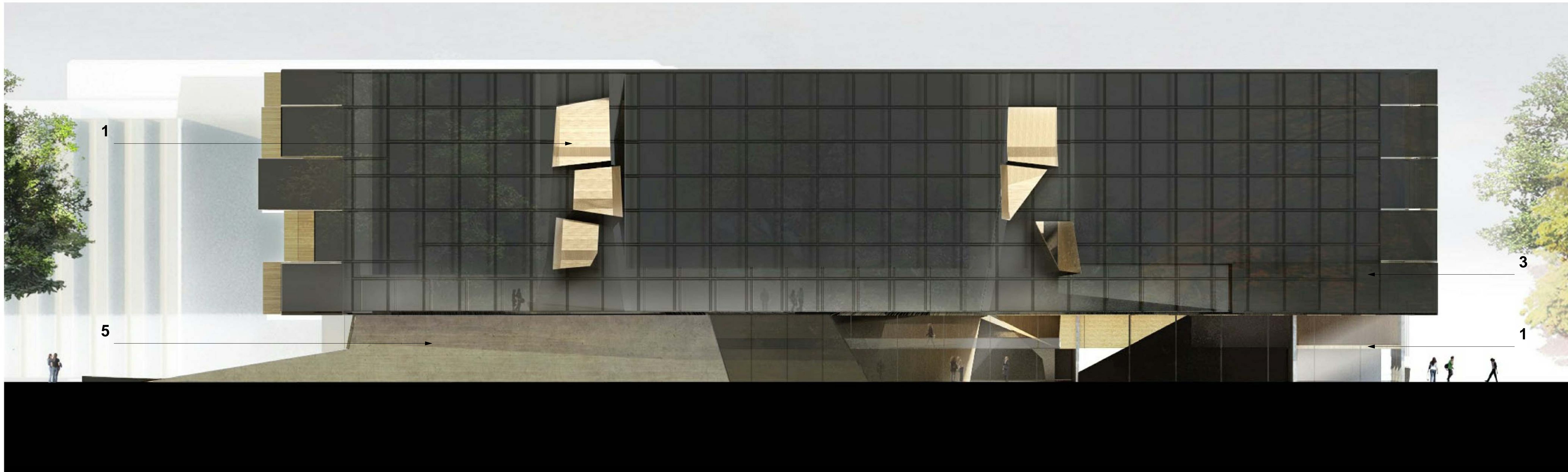


NORTH ELEVATION



EAST ELEVATION

Copyright reserved. These drawings and the design contained therein or which may be inferred therefrom are, and at all times remain, the exclusive property of Saucier + Perrotte Architects | Hughes Condon Marler Architects | Architects in joint venture. Saucier + Perrotte Architects | Hughes Condon Marler Architects | Architects in joint venture holds the copyright and ownership in the said drawings, which cannot be used for any purpose without the express written consent of Saucier + Perrotte Architects | Hughes Condon Marler Architects | Architects in joint venture.



SOUTH ELEVATION



WEST ELEVATION

No.	ISSUES	DATE <sup>1/10</sup>
1.		
2.		
3.		
4.		
5.		
6.		

MATERIALS

- 1 - Clear Glass
- 2 - Mirrored Grey Glass
- 3 - Smoked Glass
- 4 - Polished Concrete on Ground with Grass infill
- 5 - Board Formed Concrete
- 6 - Luminiscent Serigraphic Glass Case
- 7 - Zinc Panels
- 8 - Screen with Vegetation

UBC Faculty of  
Pharmaceutical  
Science/Centre for Drug  
Research &  
Development

Westbrook Mall  
Vancouver

Sheet Title  
Rendered Elevations

Drawn	S+P/HOMA
Job No.	0936
Checked	Checker
Date	15-02-2010
Scale	1:225

ISSUED FOR  
DEVELOPMENT PERMIT  
APPLICATION

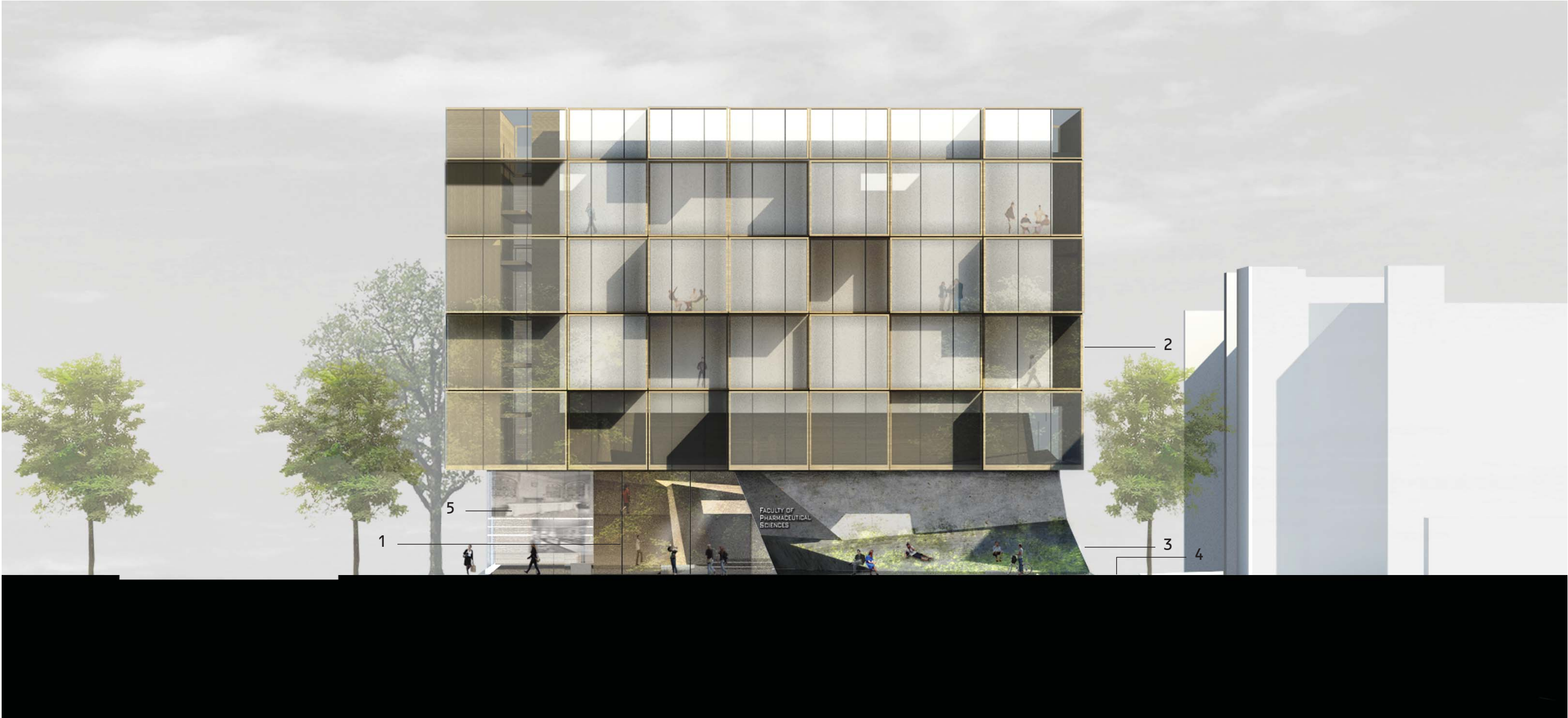


EAST ELEVATION



- MATERIALS
- 1 - Clear Glass
  - 2 - Grey Reflective Glass
  - 3 - Polished Concrete on the Ground (terrazzo) with Green Infill

WEST ELEVATION

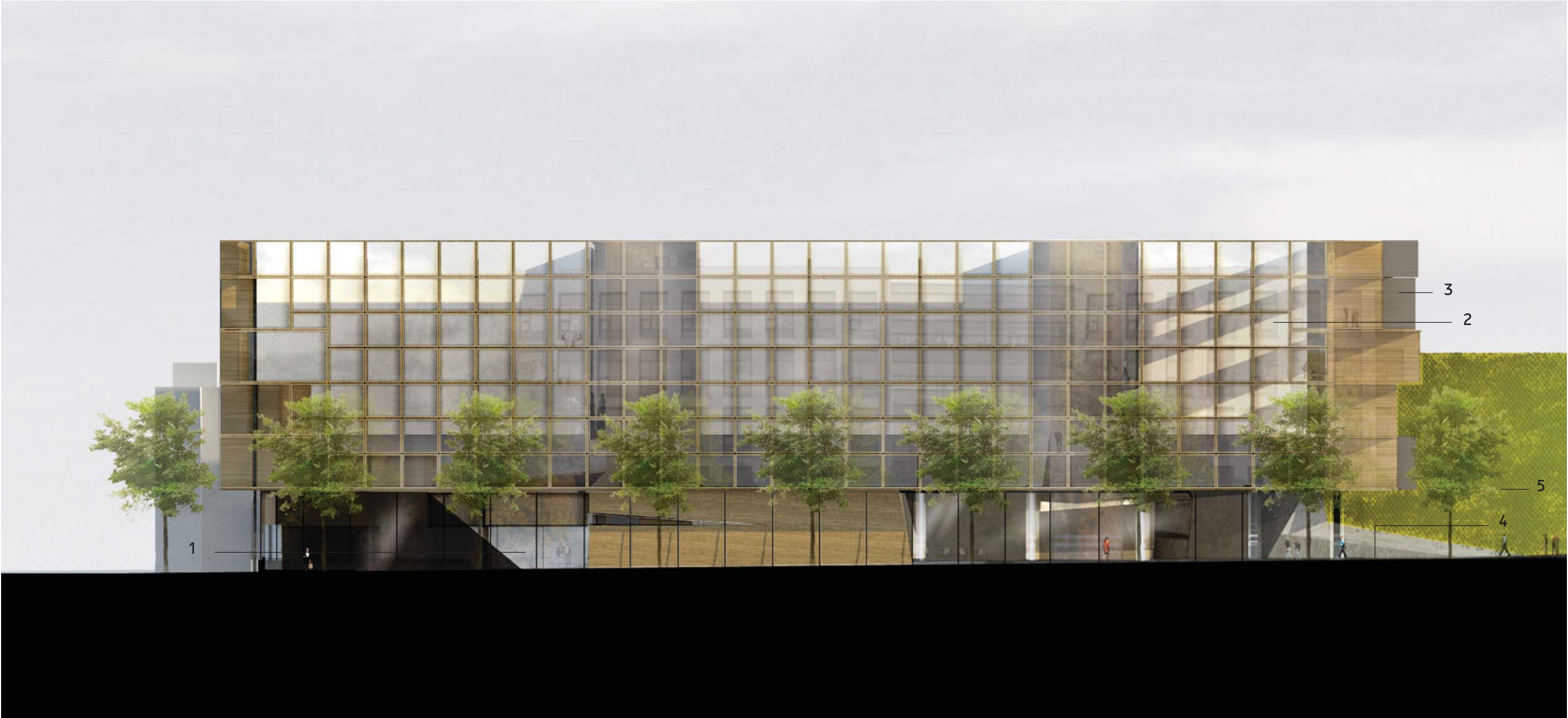


MATERIALS

- 1 - Clear Glass
- 2 - Mirrored Grey Glass
- 3 - Pour in Place Concrete with boards
- 4 - Polished Concrete on the Ground (terrazzo)
- 5 - Luminescent serigraphic Glass cases



NORTH ELEVATION



- MATERIALS**
- 1 - Clear Glass
  - 2 - Grey Reflective Glass
  - 3 - Zinc Panels
  - 4 - Polished Concrete on the Ground (terrazzo) with Green Infill
  - 5 - Screen with Green Material

SOUTH ELEVATION



MATERIALS

- 1 - Clear Glass
- 2 - Smoked Glass
- 3 - Pour in Place Concrete with boards