

**LEGEND**

- EXISTING TREE TO REMAIN AND BE PROTECTED - SEE SPECIFICATIONS
  - MINIMUM EXTENTS OF TREE PROTECTION FENCING - SEE SPECIFICATIONS
  - EXISTING TREE TO BE REMOVED
  - EXISTING TREE WHICH IS POSSIBLE CANDIDATE FOR RE-LOCATION ON SITE
  - EXTENTS OF EXISTING MATURE SHRUB BED TO BE PRESERVED AND PROTECTED
- FOR LOCATIONS AND DETAILS OF PROPOSED TREES - SEE PLANTING PLAN
- ADHERE TO "CONSTRUCTION MANAGEMENT PLAN FOR WORK ADJACENT TO TREES - PONDEROSA COMMONS PHASE 2 NORTH - DEC 14, 2012 AND PROJECT SPECIFICATIONS FOR TREE PRESERVATION"

**PLANT SCHEDULE - PROPOSED TREES**

QTY	BOTANICAL NAME	COMMON NAME	PLANTED SIZE
6	ACER RUBRUM 'RED SUNSET'	RED MAPLE	8.0CM CAL., B&B
11	PRUNUS YEODENSIS 'AKEBONO'	AKEBONO CHERRY	8.0cm Cal., B&B
8	ACER CIRCINATUM	VINE MAPLE	3.5M HT., B&B
27	CORNUS 'EDDIE'S WHITE WONDER'	EDDIE'S WHITE WONDER DOGWOOD	3.5M HT., B&B
1	THUJA PLICATA	WESTERN RED CEDAR	8.0CM CAL., B&B
1	CUPRESSUS NOOTKATENSIS	NOOKTA CYPRESS	8.0CM CAL., B&B

**EXISTING TREES - TREES TO BE RETAINED**

INFORMATION PROVIDED BY TREE INVENTORY - DIAMOND HEAD CONSULTING LTD., 2010

SURVEY ID	BOTANICAL NAME	COMMON NAME	DBH(MM)	HEIGHT(M)	CONDITION	ARBORIST'S COMMENTS
4641	PRUNUS YEODENSIS	YOSHINO CHERRY	NOT SURVEYED			
4646	TSUGA HETEROPHYLLA	WESTERN HEMLOCK	28	28	FAIR	-TREE IS IN DECLINE, MAJOR PREVIOUS PRUNING CONTRIBUTING TO A STRANGE CROWN FORM.
4647	TSUGA HETEROPHYLLA	WESTERN HEMLOCK	NOT SURVEYED			
*8139	PICEA SITCHENSIS	SITKA SPRUCE	770	28	GOOD	-IN SMALL PLANTING AREA, SLIGHTLY STRESSED DUE TO LACK OF SOIL.
4847	PSUEDOTSUGA MENZIESII	DOUGLAS FIR	1070	33	GOOD	-TREE HAS A LARGE OPEN GROWN CANOPY WITH BRANCHES OVER THE SMALL BUILDING AT THE BASE. TREE IS SLIGHTLY STRESSED, MOSTLY DUE TO THE AMOUNT OF CONCRETE AT THE BASE OF THE TREE.
4849	PARROTIA PERSICA	PARROTIA PINE	250	7	GOOD	-TREE IS STRESSED BY ADJACENT JAPANESE MAPLE. GOOD FORM AND WELL MAINTAINED IN SHRUB BED.
4850	PINUS SABANIANA	DIGGER PINE	810	23	GOOD	-LARGE MATURE TREE BETWEEN SIDEWALK AND ROAD, TREE IS LIFTING SIDEWALK. WELL MAINTAINED AND HEALTHY WITH MINOR DECAY AND LARGE CORNER HOLE SPECIMEN - MAKE ONLY SPECIMEN IN VANDOUVER (TREE OF VANCOUVER REFERENCE).
4771	CHAMAECYPARIS LAWSONII	LAWSON'S CYPRESS	680	25	GOOD	-HEALTHY TREE IN GRASSY AREA, TO PREVIOUS PRUNING. GOOD RETENTION TREE.
4852	ACER PALMATUM	JAPANESE MAPLE	500	6	GOOD	-A MAIN STEM USE SOULS FOR TREE PROTECTION AREA, VERY HEALTHY OLD SPECIMEN.
4855	ACER PALMATUM	JAPANESE MAPLE	500	6	GOOD	-MULTIPLE STEMS USE SOULS FOR TREE PROTECTION AREA, VERY HEALTHY OLD SPECIMEN.
4856	ACER PALMATUM	JAPANESE MAPLE	500	6	GOOD	-MULTIPLE STEMS USE SOULS FOR TREE PROTECTION AREA, VERY HEALTHY OLD SPECIMEN.
4854	PINUS PONDEROSA	PONDEROSA PINE	1080	32	EXCELLENT	-SIGNIFICANT TREE - MAY BE ONE OF THE LARGEST WHEN REFERENCING BIG TREES OF BC LIST. LARGE PREVIOUS PRUNING WOUNDS SHOWING GOOD BRANCH COUPLING BETWEEN THE RAISED SIDEWALK AND BUILDING, BEAL OFF BRANCHING CONDITIONS FOR THE SPECIES. VERY LARGE SPECIMEN.
4866	PRUNUS YEODENSIS	YOSHINO CHERRY	720	10	GOOD	-LARGE MATURE TREE BETWEEN SIDEWALK AND ROAD, TREE IS LIFTING SIDEWALK. WELL MAINTAINED AND HEALTHY WITH MINOR DECAY AND FRESH PREVIOUS PRUNING.
4865	PRUNUS YEODENSIS	YOSHINO CHERRY	430	10	GOOD	-LARGE MATURE TREE BETWEEN SIDEWALK AND ROAD, TREE IS LIFTING SIDEWALK. WELL MAINTAINED WITH LARGE DECAY AND LARGE FRESH PREVIOUS PRUNING.
7987	PRUNUS YEODENSIS	YOSHINO CHERRY	400	10	GOOD	-LARGE MATURE TREE BETWEEN SIDEWALK AND ROAD, TREE IS LIFTING SIDEWALK. WELL MAINTAINED AND HEALTHY WITH MINOR DECAY AND TWO LARGE PREVIOUS PRUNING WOUNDS.
4863	PRUNUS YEODENSIS	YOSHINO CHERRY	340	6	GOOD	-LARGE, SLIGHTLY YOUNGER THAN GROUP OF TREES, BETWEEN SIDEWALK AND ROAD, TREE IS LIFTING SIDEWALK. WELL MAINTAINED AND HEALTHY WITH SMALL CAVITY AT THE BASE.

\*PRESERVATION TO BE EVALUATED - SUBJECT TO DEVELOPMENT OF DETAILED EXCAVATION PLANS FOR BUILDING AND UTILITIES.

**EXISTING TREES - POTENTIAL CANDIDATES FOR RE-LOCATION**

INFORMATION PROVIDED BY TREE INVENTORY - DIAMOND HEAD CONSULTING LTD., 2010

SURVEY ID	BOTANICAL NAME	COMMON NAME	DBH(MM)	HEIGHT(M)	CONDITION	ARBORIST'S COMMENTS
4853	ACER PALMATUM	JAPANESE MAPLE	190	6	FAIR	-MINOR DECAY AT BASE OTHERWISE HEALTHY
4857	ACER PALMATUM	JAPANESE MAPLE	7	7	GOOD	-MULTIPLE STEMS USE SOULS FOR TREE PROTECTION AREA, HEALTHY TREE UNDER BUILDING EDGE.
4858	ACER PALMATUM	JAPANESE MAPLE	6	6	GOOD	-MULTIPLE STEMS USE SOULS FOR TREE PROTECTION AREA.
4848	ACER PALMATUM	JAPANESE MAPLE	8	8	GOOD	-MAJOR DECAY AND MINOR PREVIOUS PRUNING, OTHERWISE HEALTHY. MAJOR DECAY AND MINOR PREVIOUS PRUNING. TREE HAS MINOR DECAY AT BASE BUT APPEARS OK NEXT TO BUILDING IN SHRUB BED.

**EXISTING TREES - TREES TO BE REMOVED**

INFORMATION PROVIDED BY TREE INVENTORY - DIAMOND HEAD CONSULTING LTD., 2010

SURVEY ID	BOTANICAL NAME	COMMON NAME	DBH(MM)	HEIGHT(M)	CONDITION	ARBORIST'S COMMENTS
4642	PRUNUS YEODENSIS	YOSHINO CHERRY	630	8	FAIR	-IN BED ON THE EDGE OF THE ROAD, HEALTHY TREE.
4643	PRUNUS YEODENSIS	YOSHINO CHERRY	540	8	FAIR	-TREE HAS MAJOR DECAY IN ONE OF THE SCAFFOLD BRANCHES OVER THE ROAD, PRUNING IF RETAINING.
4644	PRUNUS YEODENSIS	YOSHINO CHERRY	450	6	FAIR	-TREE HAS MAJOR DECAY AT THE BASE, NOT SUITABLE FOR LONG TERM RETENTION.
4645	PRUNUS YEODENSIS	YOSHINO CHERRY	380	6	POOR	-LARGE MATURE TREE BETWEEN SIDEWALK AND ROAD, TREE IS LIFTING SIDEWALK. WELL MAINTAINED AND HEALTHY WITH MINOR DECAY AND MODERATE PREVIOUS PRUNING.
4869	PRUNUS YEODENSIS	YOSHINO CHERRY	360	6	GOOD	-LARGE MATURE TREE BETWEEN SIDEWALK AND ROAD, TREE IS LIFTING SIDEWALK. WELL MAINTAINED AND HEALTHY WITH MINOR DECAY AND MODERATE PREVIOUS PRUNING.
4868	PRUNUS YEODENSIS	YOSHINO CHERRY	430	8	GOOD	-LARGE MATURE TREE BETWEEN SIDEWALK AND ROAD, TREE IS LIFTING SIDEWALK. WELL MAINTAINED AND HEALTHY WITH MINOR DECAY AND MODERATE PREVIOUS PRUNING.
4867	PRUNUS YEODENSIS	YOSHINO CHERRY	400	8	GOOD	-LARGE MATURE TREE BETWEEN SIDEWALK AND ROAD, TREE IS LIFTING SIDEWALK. WELL MAINTAINED AND HEALTHY WITH MINOR DECAY AND MODERATE PREVIOUS PRUNING.
4862	PRUNUS YEODENSIS	YOSHINO CHERRY	490	8	GOOD	-LARGE MATURE TREE BETWEEN SIDEWALK AND ROAD, TREE IS LIFTING SIDEWALK. WELL MAINTAINED AND HEALTHY WITH MINOR DECAY AND MODERATE PREVIOUS PRUNING.
4861	PRUNUS YEODENSIS	YOSHINO CHERRY	490	8	GOOD	-LARGE MATURE TREE BETWEEN SIDEWALK AND ROAD, TREE IS LIFTING SIDEWALK. WELL MAINTAINED AND HEALTHY WITH MINOR DECAY AND MODERATE PREVIOUS PRUNING.
4871	BETULA PENDULA	EUROPEAN WHITE BIRCH	440	11	FAIR TO POOR	-TREE IS NEXT TO SIDEWALK IN SHRUB BED, TREE SHOWS SYMPTOMS OF THE MAJORITY OF BIRCH TREES IN THE REGION, DYING FROM THE TOP DOWN AND SLOWLY IN SECTION. HAS HAD MAJOR PREVIOUS PRUNING TO REMOVE THE DEAD TOPS.
4872	BETULA PENDULA	EUROPEAN WHITE BIRCH	320	12	FAIR TO POOR	-THIS TREE HAS LESS DEBRACK AND HAS NOT HAD THE TOPS CUT OUT.
4873	BETULA PENDULA	EUROPEAN WHITE BIRCH	400	12	FAIR TO POOR	-THIS TREE HAS LESS DEBRACK AND HAS NOT HAD THE TOPS CUT OUT.
4874	BETULA PENDULA	EUROPEAN WHITE BIRCH	320	12	FAIR TO POOR	-THIS TREE HAS LESS DEBRACK AND HAS NOT HAD THE TOPS CUT OUT.
4860	BETULA PENDULA	EUROPEAN WHITE BIRCH	410	18	FAIR TO POOR	-THIS TREE HAS LESS DEBRACK AND HAS NOT HAD THE TOPS CUT OUT.
4859	BETULA PENDULA	EUROPEAN WHITE BIRCH	400	20	FAIR	-THIS TREE HAS LESS DEBRACK AND HAS NOT HAD THE TOPS CUT OUT.
4876	ACER PLATANOIDES	NORWAY MAPLE	620	12	GOOD	-SIGNIFICANT TREE AT ENTRANCE TO BUILDING, ON EDGE OF MAINTAINED DEAD WOOD IN THE CANOPY.
4875	SOPHORA JAPONICA	JAPANESE PAGOODA TREE	-	9	GOOD	-TREE HAS A STRIKE EACH 20-30CM IN HEIGHT AT EDGE OF BUILDING WITH SOME BRANCHES GROWING AGAINST BUILDING.
4844	CHAMAECYPARIS NOOTKATENSIS	NOOKTA CYPRESS	100	25	GOOD	-PROTECTION AREA, OPEN FORM, IN BED BEHIND SERVICE ROAD, HANGS OVER ROAD.
4845	THUJA PLICATA	WESTERN RED CEDAR	950	29	GOOD	-OPEN FORM IN BED BEHIND SERVICE ROAD, HANGS OVER ROAD.
8983	ARBUTUS MENZIESII	ARBUTUS	120	4	GOOD	-SINCE INVENTORY TREE HAS DIED

**LEGEND**

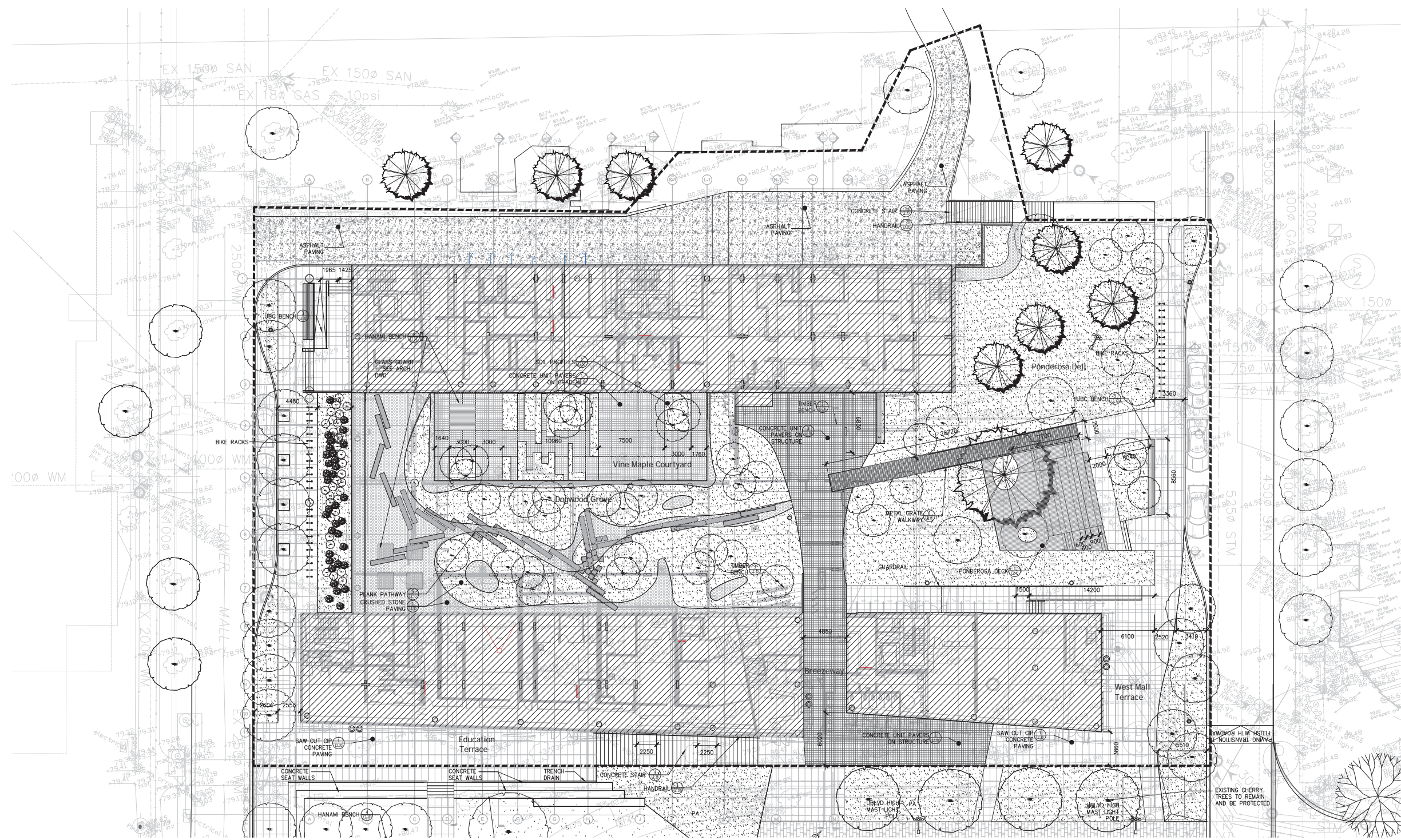
No. ISSUES	DATE
1. Issue for DP	Nov 18, 2013
2. Revise for DP	Nov 7, 2013
3. 100% DD	Aug 14, 2013
4. 100% DD - CLIENT APPROVAL	Aug 22, 2013
5. 100% DD - Planning Package	Nov 18, 2013
6. DP Final Approval	Nov 18, 2013

**UBC PONDEROSA COMMONS**  
Phase Two

The University of British Columbia  
University Boulevard and West Mall,  
Vancouver, B.C.

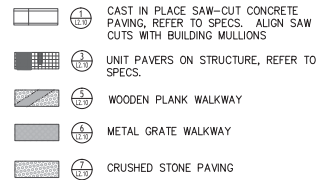
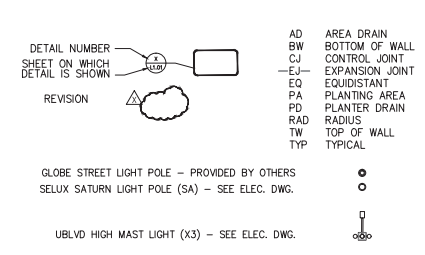
Sheet Title  
Tree Protection Plan

Job No. 2011009  
Issue Date: November 7th, 2012  
Issue: 1.150



No.	ISSUES	DATE
1.	Issue for DP	Nov 19th, 2013
2.	Revised for DP	Mar 7, 2013
3.	100% DD	Aug 14, 2013
4.	100% DD - CLIENT APPROVAL	Dec 22, 2013
5.	100% DD - Client Approval	Dec 22, 2013
6.	DP Approval	Nov 14, 2013

**Legend**



**Notes**

ALL DIMENSIONS ARE NOMINAL; DIMENSIONS ARE BASED ON ARCHITECTURAL GRID.  
REFER TO ARCH. FOR LAYOUT OF SLAB EDGE CIP CONC. WALLS, GUARD RAILS; REFER TO GRADING PLAN FOR HORIZONTAL CONTROL OF PAVING/LANDSCAPE AREAS.  
ALIGN SAW CUT WITH BUILDING MULLION, EXCEPT WHERE SHOWN OTHERWISE. CONFIRM PATTERN ON SITE WITH LANDSCAPE ARCHITECT.  
REFER TO DETAILS AND SECTIONS FOR ALL LANDSCAPE IMPROVEMENTS.  
REFER TO CIVIL FOR LAYOUT OF STREETScape, PUBLIC REALM  
PAVING, PLANTING, LIGHTING AND FURNISHINGS TO BE COMPLIANT WITH UBC CAMPUS PLAN DESIGN GUIDELINES

CIVIL UTILITIES INFORMATION PROVIDED BY CIVIL ENGINEER. SEE CIVIL DRAWINGS FOR DETAILS

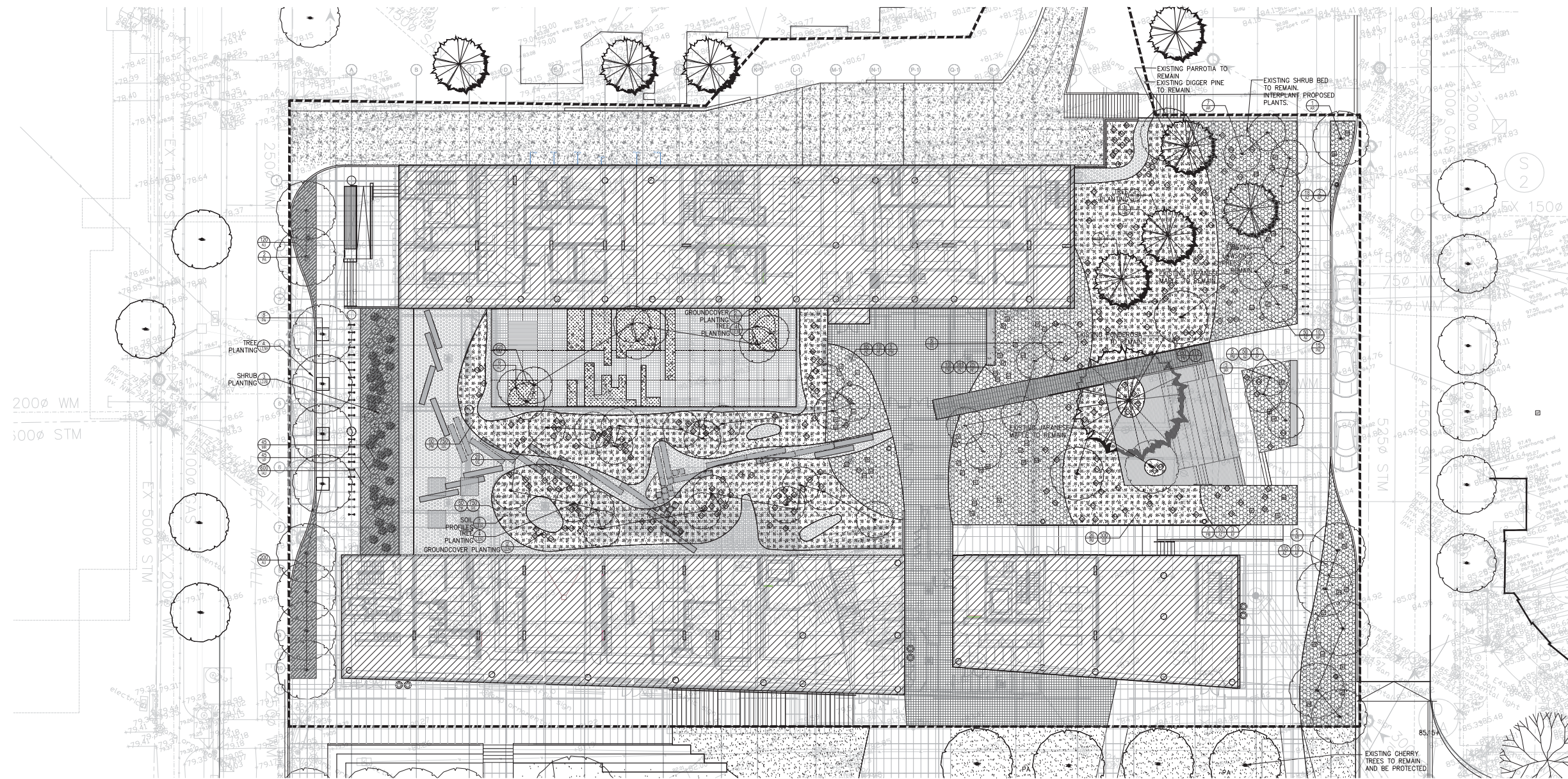
**UBC PONDEROSA COMMONS**  
Phase Two

The University of British Columbia  
University Boulevard and West Mall,  
Vancouver, B.C.

Sheet Title  
**Materials and Layout Plan**

Job No. 2011009  
Issue Date November 7th, 2012  
Scale 1:150





No. ISSUES	DATE
1. Issue for DP	Nov 19th, 2013
2. Review for DP	Mar 7, 2013
3. 100% DD	Aug 14, 2013
4. 100% DD - CLIENT APPROVAL	Dec 22, 2013
5. 100% DD - Client Approval	Dec 22, 2013
6. DP Approved	Nov 1st, 2013

**PLANT SCHEDULE - PHASE TWO**

KEY	QTY	BOTANICAL NAME	COMMON NAME	PLANTED SIZE	COMMENTS
AR	6	ACER RUBRUM 'RED SUNSET'	RED MAPLE	8.0CM CAL., B&B	UNIFORM SIZE AND QUALITY
PA	10	PRUNUS YEODENSIS 'AKEBONO'	AKEBONO CHERRY	8.0cm Cal., B&B	UNIFORM SIZE AND QUALITY
AC	8	ACER CIRCINATUM	VINE MAPLE	3.5M HT., B&B	UNIFORM SIZE AND QUALITY
CE	25	CORNUS 'EDDIE'S WHITE WONDER'	EDDIE'S WHITE WONDER DOGWOOD	3.5M HT., B&B	UNIFORM SIZE AND QUALITY
TP	1	THUJA PLICATA	WESTERN RED CEDAR	8.0CM CAL., B&B	UNIFORM SIZE AND QUALITY
CN	1	CUPRESSUS NOOTKATENSIS	NOOTKA CYPRESS	8.0CM CAL., B&B	UNIFORM SIZE AND QUALITY
<b>SHRUBS</b>					
MR	45	MAHONIA REPENS	CREeping OREGON GRAPE	#2 POT, 24" O.C.	UNIFORM SIZE AND QUALITY
VP	45	VACCINIUM PARVIFOLIUM	RED HUCKLEBERRY	#2 POT, 24" O.C.	UNIFORM SIZE AND QUALITY
<b>GROUNDCOVERS</b>					
GS	1275	GAULTHERIA SHALLON	SALAL	#2 POT, 24" O.C.	FULL
AU	920	ARCTOSTAPHYLOS UVA-URSI	KINNIKINNICK	#1 POT, 18" O.C.	FULL
AZ	778	AZALEA X 'DELAWARE VALLEY WHITE'	DELAWARE VALLEY WHITE AZALEA	#2 POT, 36" O.C.	FULL
HM	225	HAKONECHLOA MACRA 'AUREOLA'	JAPANESE FOREST GRASS	#2 POT, 24" O.C.	FULL
AF	65	ATHYRIUM FILIX-FEMINA	LADY FERN	#2 POT, SEE PLAN	FULL
PM	128	POLYSTICHUM MUNITUM	WESTERN SWORD FERN	#1 POT, SEE PLAN	FULL
HB	25	HELLEBORUS X BALLARDIAE 'HCG MOONLIT MARBLE'	HELLEBORE	#1 POT, SEE PLAN	FULL
HB	25	HELLEBORUS X BALLARDIAE 'HCG PINK FROST'	HELLEBORE	#1 POT, SEE PLAN	FULL
HB	25	HELLEBORUS X ERICSMITHII 'HCG WINTER'S BLISS'	HELLEBORE	#1 POT, SEE PLAN	FULL

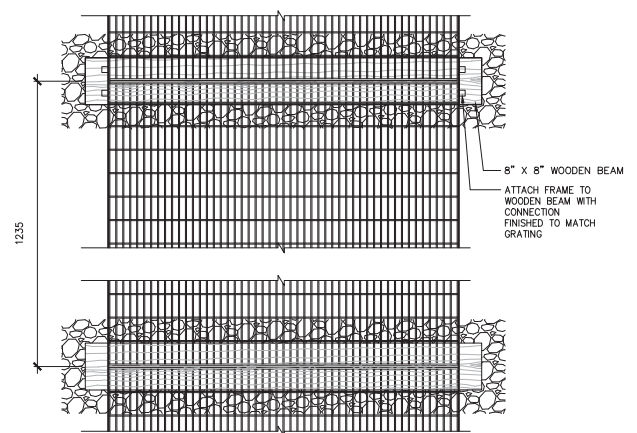
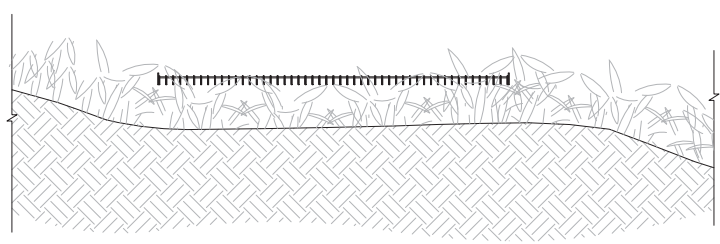
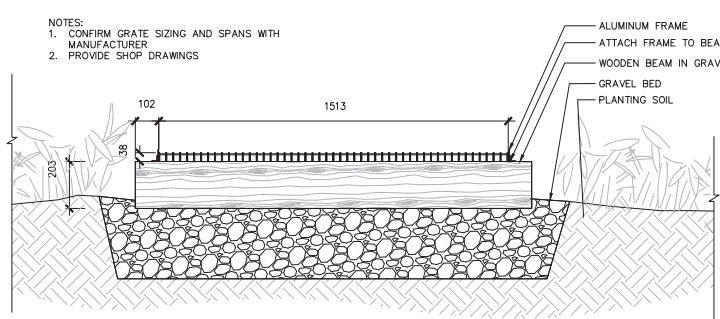
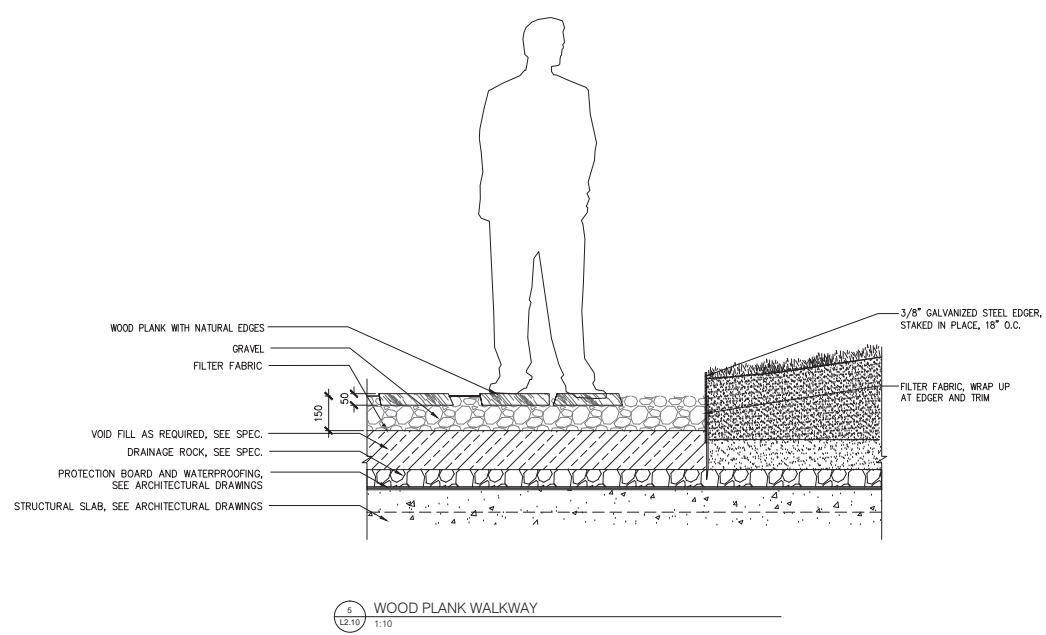
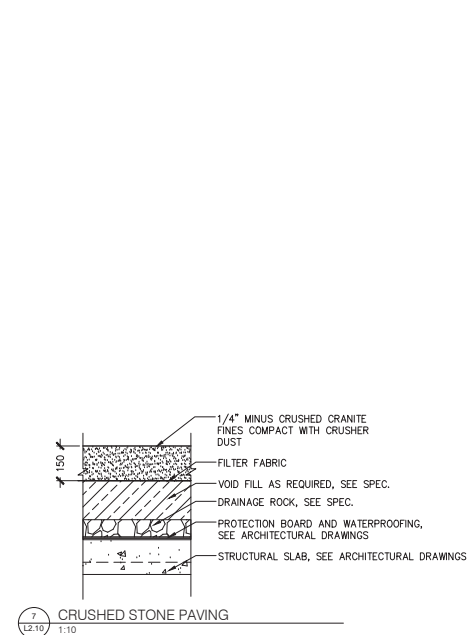
**NOTES**

1. ALL PLANT MATERIAL TO BONTA AND BCSEA STANDARDS. REFER TO THE BCSEA LANDSCAPE STANDARD, LATEST EDITION.
2. AREA OF SEARCH FOR PLANT MATERIAL: PACIFIC NORTHWEST, INCLUDING BRITISH COLUMBIA, WASHINGTON AND OREGON.
3. REFER TO SPECIFICATION FOR GENERAL CONDITIONS, MATERIALS AND INSTALLATION REQUIREMENTS.
4. CONFIRM TREE PLANTING LOCATIONS, AND PLANTING LAYOUT WITH LANDSCAPE ARCHITECT ON SITE.
5. ALL PLANTING TO BE COMPLIANT WITH UBC CAMPUS PLAN DESIGN GUIDELINES.

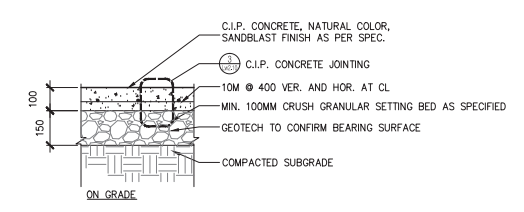
**UBC PONDEROSA COMMONS**  
Phase Two

The University of British Columbia  
University Boulevard and West Mall,  
Vancouver, B.C.

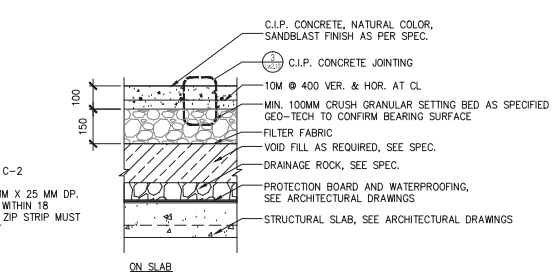
Sheet Title  
**Planting Plan**



8 METAL GRATE WALKWAY  
12.10 1:10

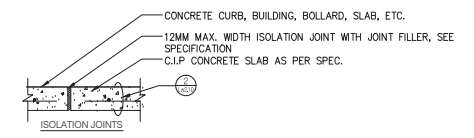
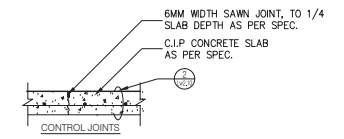


NOTES:  
CONCRETE : TC = 32 MPa, C-2  
SAWCUT CONTROL JOINTS 4MM X 25 MM DP. IN GRID, SEE LAYOUT PLAN, WITHIN 18 HOURS OF FINISHING SLABS, ZIP STRIP MUST BE APPROVED BY ARCHITECT

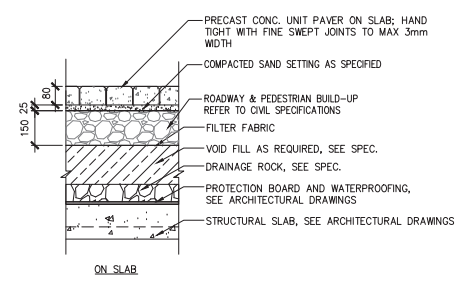


1 PAVING TYPE B - C.I.P. CONCRETE PAVING  
12.10 1:10

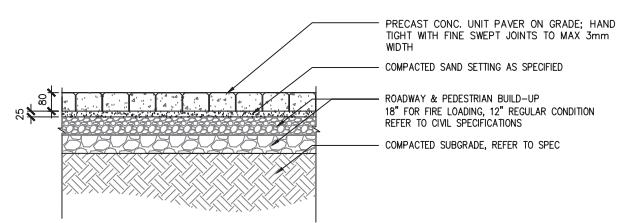
NOTE:  
CONSTRUCT ALL CONTROL JOINTS AT CONSISTENT WIDTH  
CUT JOINTS BEFORE RANDOM CRACKING OCCURS



2 C.I.P. CONCRETE JOINTING  
12.10 1:10



3 PAVING TYPE C - CONCRETE UNIT PAVERS ON SLAB  
12.10 1:10



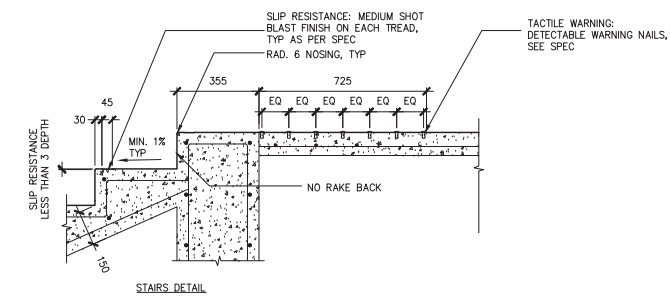
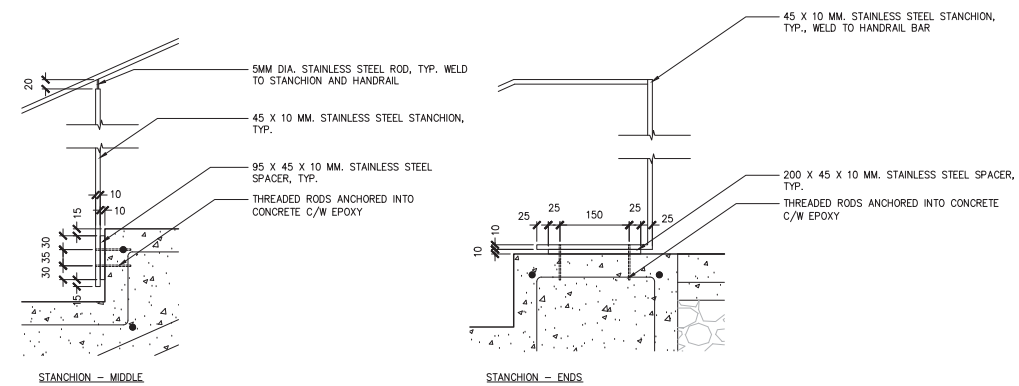
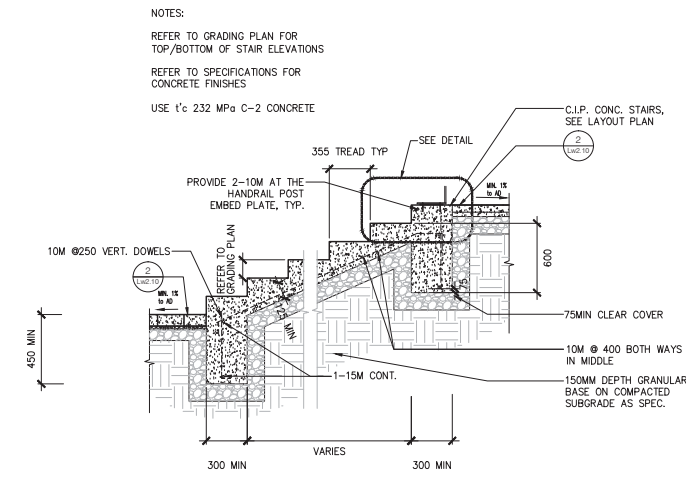
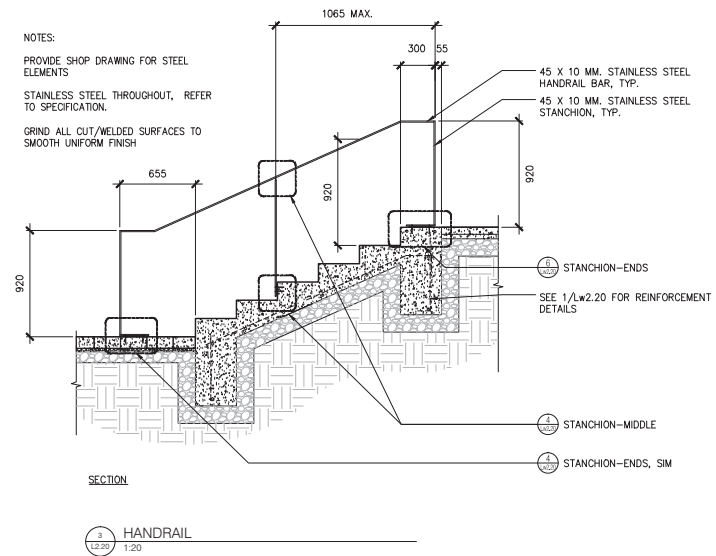
4 PAVING TYPE C-2 - CONCRETE UNIT PAVERS ON GRADE  
12.10 1:10

No.	ISSUES	DATE
1.	Issue for CIP	Nov 19th, 2013
2.	Revised for DP	Nov 27, 2013
3.	100% DD	Aug 14, 2013
4.	100% DD CLIENT APPROVAL	Oct 23, 2013
5.	CIP Forming Drawing Package	Oct 23, 2013
6.	DP Submittal Drawing Package	Nov 14, 2013

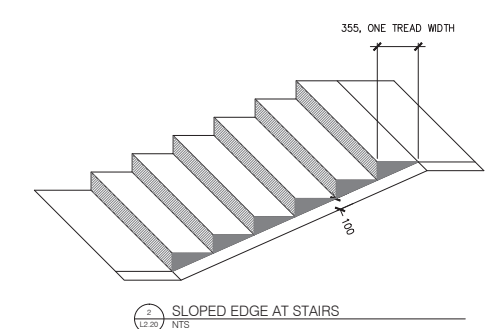
UBC PONDEROSA COMMONS  
Phase Two

The University of British Columbia  
University Boulevard and West Mall,  
Vancouver, B.C.

Sheet Title  
Paving Details



1 C.I.P. CONCRETE STAIRS - TYPICAL  
1:20, 1:10 DETAIL

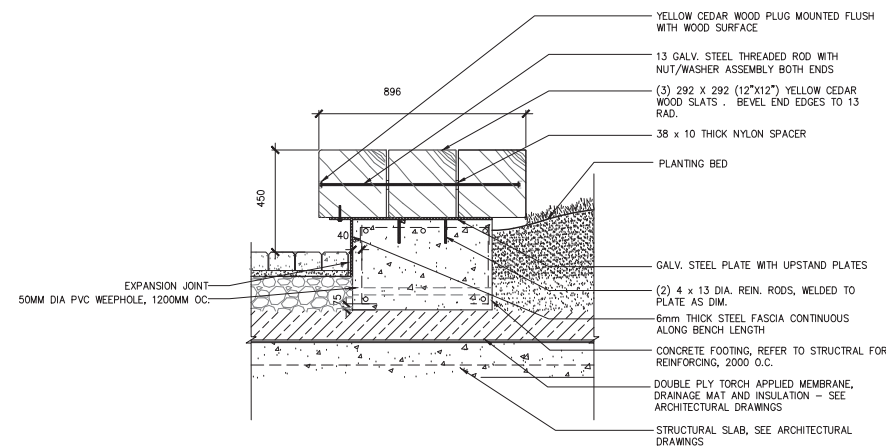


No.	ISSUES	DATE
1.	Issue for DP	Nov 19th, 2013
2.	Revised for DP	Mar 7, 2013
3.	100% DD	Aug 14, 2013
4.	100% DD	Oct 23, 2013
5.	100% DD	Oct 23, 2013
6.	DP Submittal Package	Nov 19, 2013

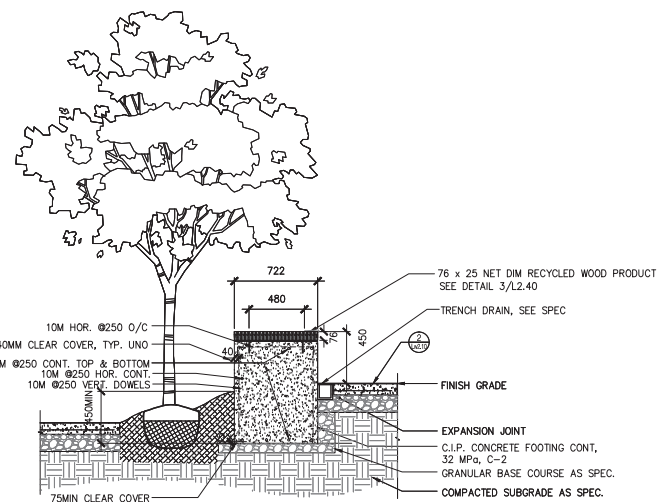
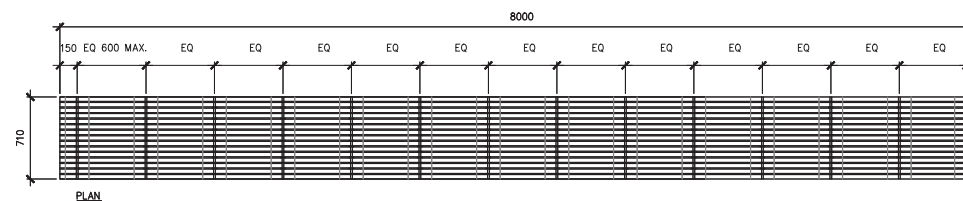
UBC PONDEROSA COMMONS  
Phase Two

The University of British Columbia  
University Boulevard and West Mall,  
Vancouver, B.C.

Sheet Title  
Steps and Handrails Details

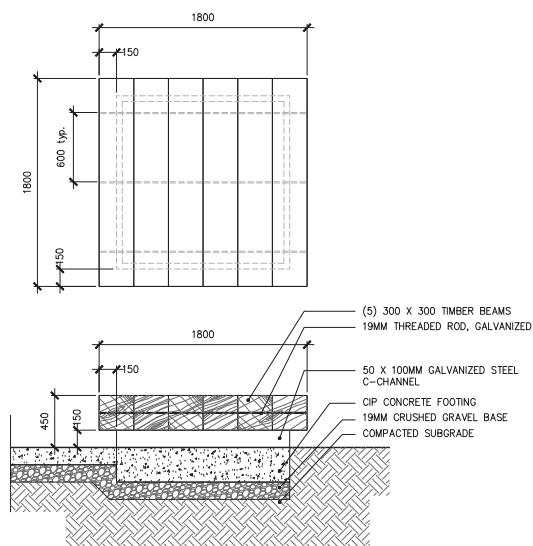
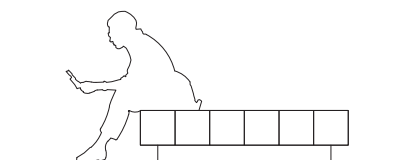


3 TIMBER BENCH AT PONDEROSA COURTYARD  
1:10

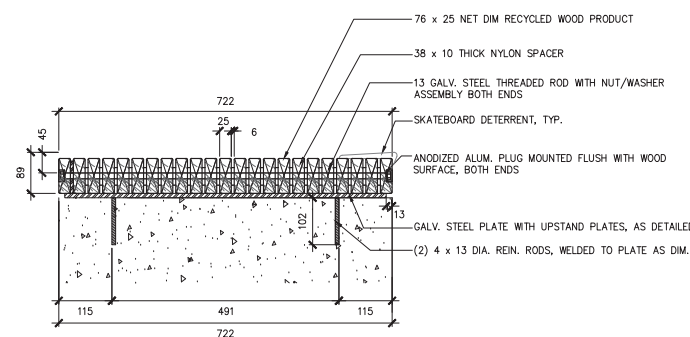


SECTION 1 UBC BENCH  
1:20

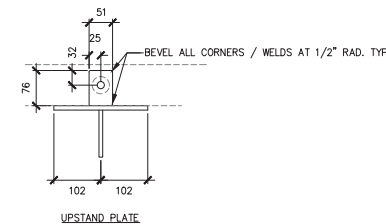
- NOTES:
1. PROVIDE SHOP DRAWINGS FOR BENCH CONSTRUCTION
  2. USE RESYSTA RECYCLED PRODUCT, 1" x 3" CUSTOM PROFILE, FVG-C14 SIAM COLOUR
  3. USE GALVANIZED STEEL FOR ALL HARDWARE UNLESS OTHERWISE NOTED.
  4. REFER TO SPECIFICATIONS FOR CONCRETE FINISHES



4 HANAMI BENCH  
1:20



2 BENCH ASSEMBLY  
1:5

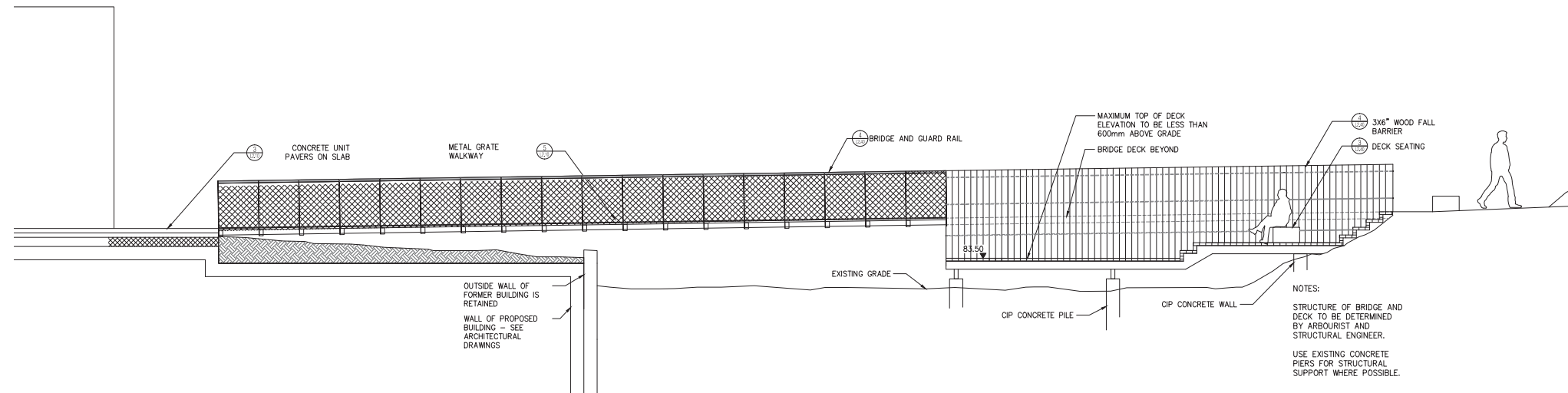


No.	ISSUES	DATE
1.	Issue for CIP	Nov 19th, 2013
2.	Revised for DP	May 7, 2013
3.	100% DD	Aug 14, 2013
4.	100% DD	Client APPROVAL
5.	100% DD	Client APPROVAL
6.	DP for submittal Package	Nov 19, 2013

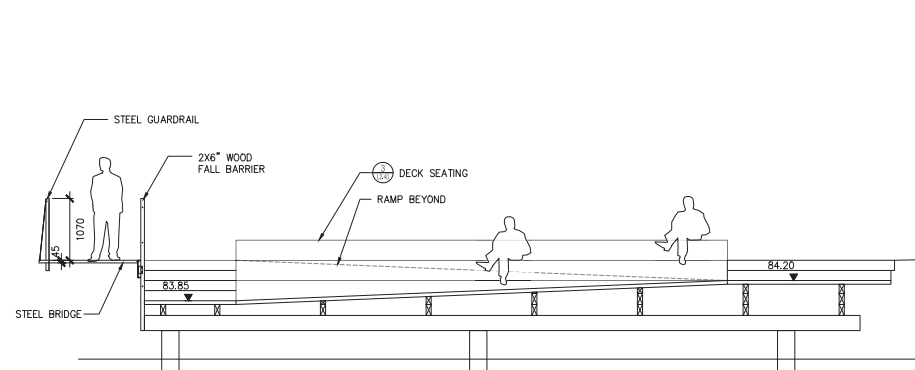
UBC PONDEROSA COMMONS  
Phase Two

The University of British Columbia  
University Boulevard and West Mall,  
Vancouver, B.C.

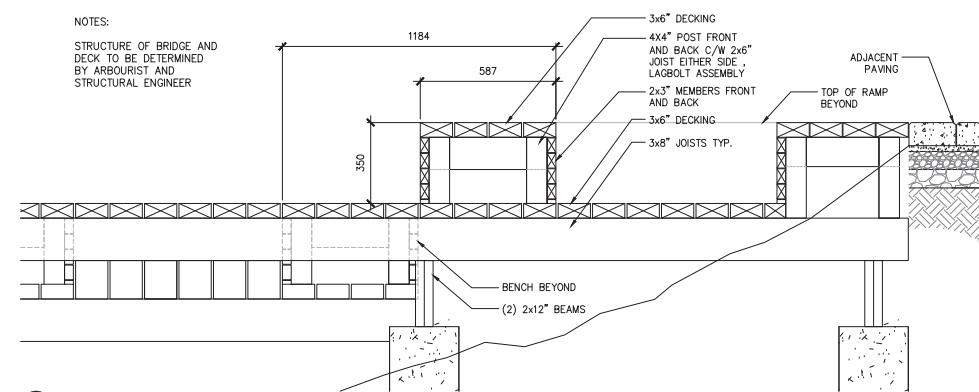
Sheet Title  
Benches Details



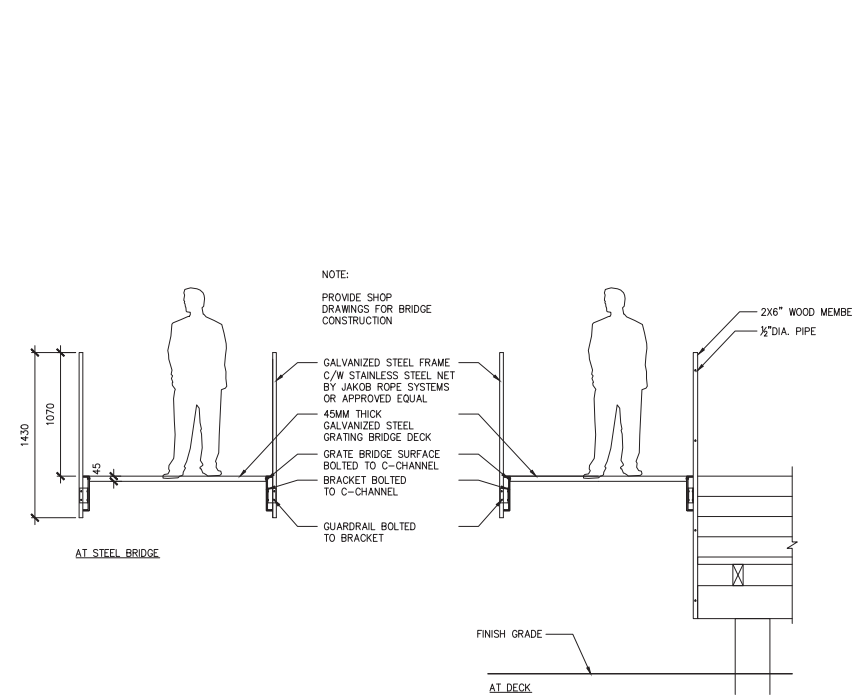
1  
12.40  
PONDEROSA DECK SECTION  
1:40



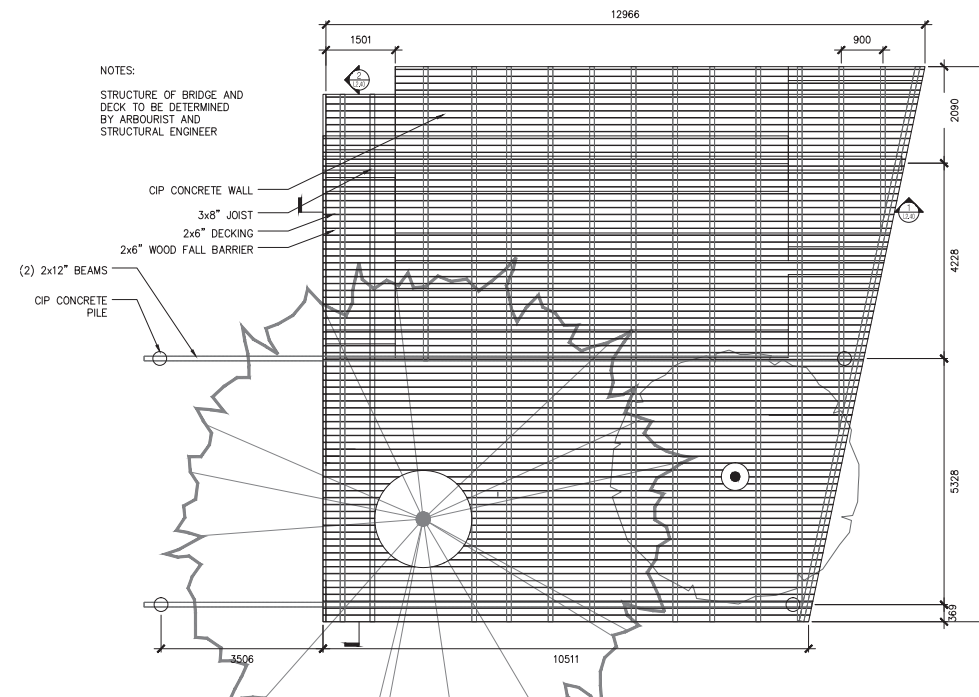
2  
12.40  
PONDEROSA DECK AND BRIDGE SECTION  
1:40



3  
12.40  
DECK SEATING  
1:10



4  
12.40  
GUARDRAIL DETAIL  
1:20



5  
12.40  
DECK PLAN  
1:50

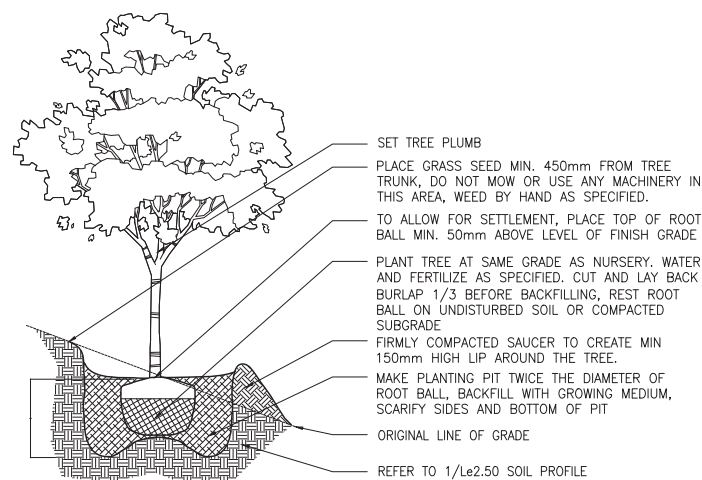
No.	ISSUES	DATE
1.	Issue for CIP	Nov 19th, 2013
2.	Revised for CIP	Mar 7, 2013
3.	100% DD	Aug 14, 2013
4.	100% DD - CLIENT APPROVAL	Oct 23, 2013
5.	CIP Working Drawing Package	Nov 14, 2013
6.	EP Submittal Drawing Package	Nov 14, 2013

UBC PONDEROSA COMMONS  
Phase Two

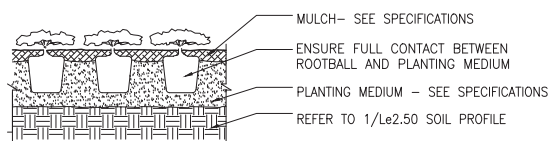
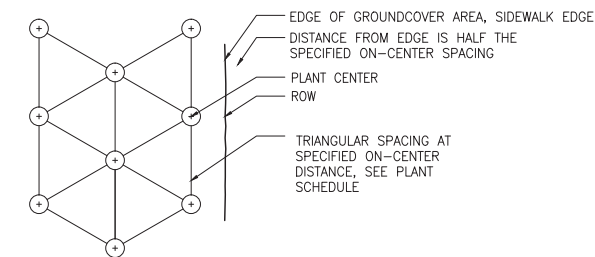
The University of British Columbia  
University Boulevard and West Mall,  
Vancouver, B.C.

Sheet Title  
Deck Details

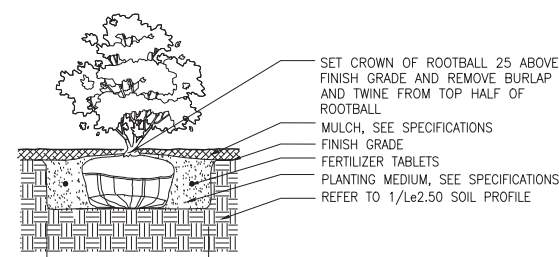




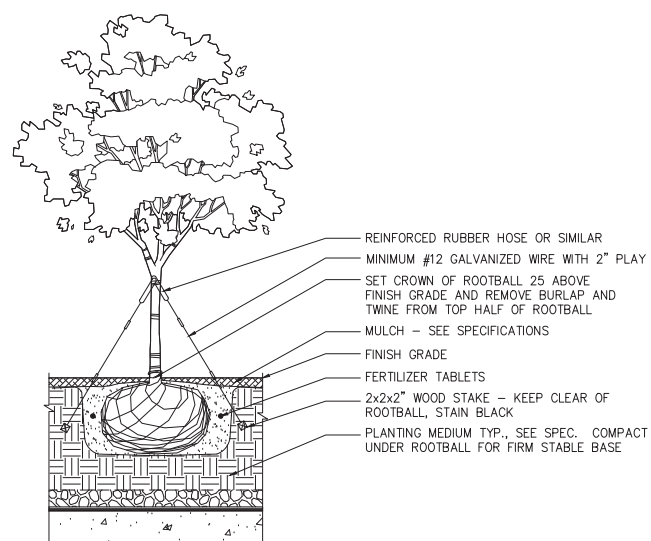
5 TREE PLANTING ON SLOPE  
1:2.50 NTS



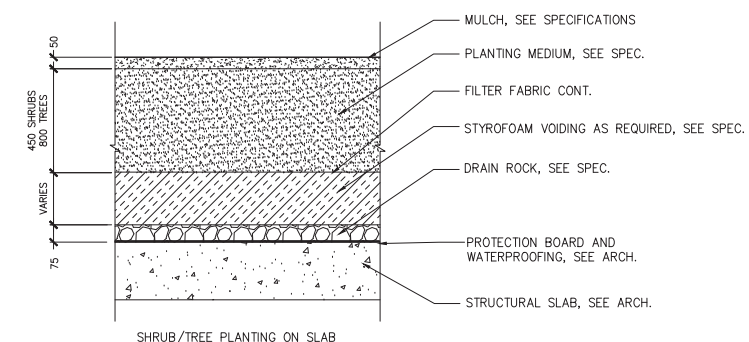
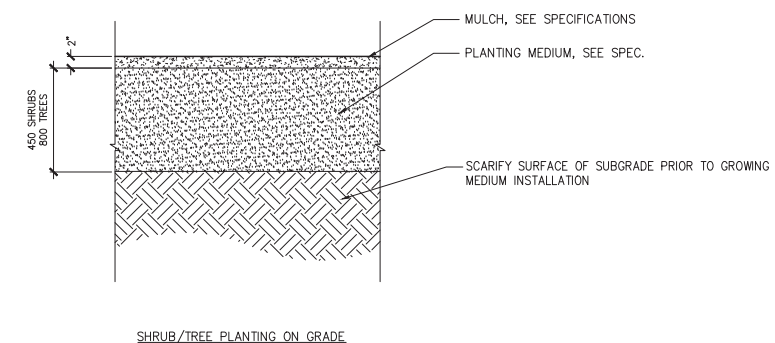
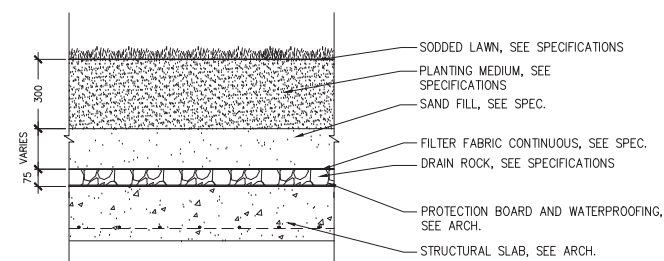
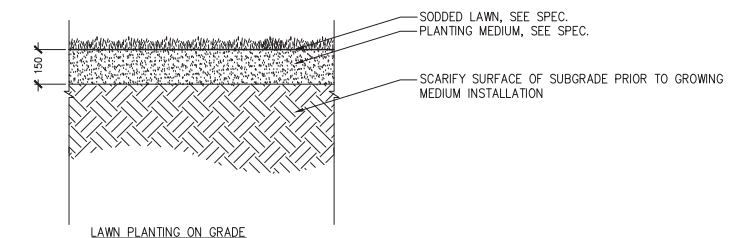
2 GROUND COVER PLANTING  
1:2.50 NTS



3 SHRUB PLANTING  
1:2.50 NTS



4 TREE PLANTING  
1:2.50 NTS



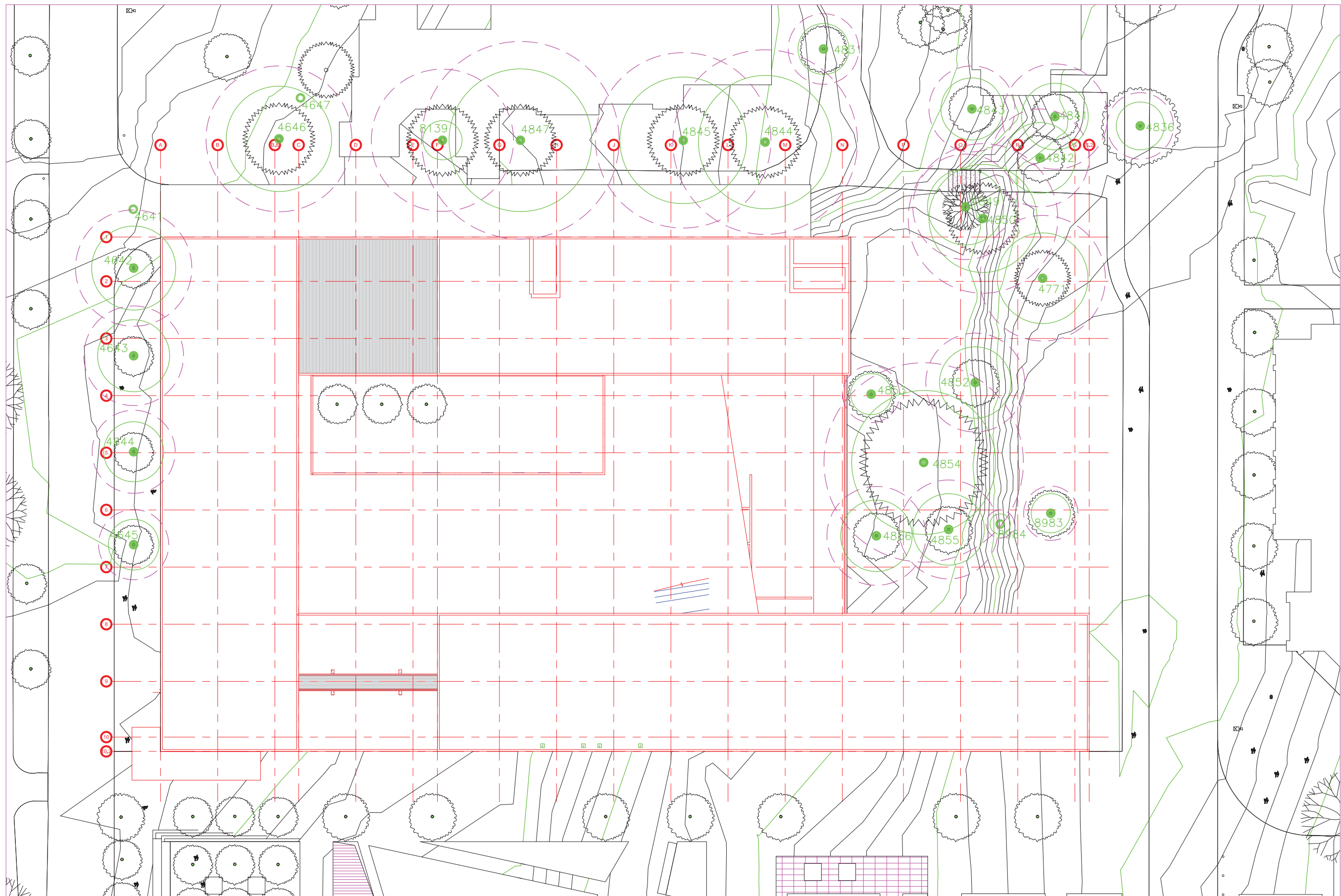
1 SOIL PROFILES  
1:2.50 NTS

No. ISSUES	DATE
1. Issue for DP	Nov 19th, 2013
2. Recheck for DP	May 7, 2013
3. 100% DD	Aug 14, 2013
4. 100% DD - CLIENT APPROVAL	Oct 23, 2013
5. DP Working Drawing Package	Oct 23, 2013
6. DP Submittal Package	Nov 1st, 2013

UBC PONDEROSA COMMONS  
Phase Two

The University of British Columbia  
University Boulevard and West Mall,  
Vancouver, B.C.

Sheet Title  
Planting Details



	<p>LEGEND</p> <ul style="list-style-type: none"> <li><span style="display: inline-block; width: 15px; height: 15px; border: 1px solid green; border-radius: 50%; margin-right: 5px;"></span> CRITICAL ROOT PROTECTION ZONE</li> <li><span style="display: inline-block; width: 15px; height: 15px; border: 1px dashed pink; border-radius: 50%; margin-right: 5px;"></span> OPTIMAL ROOT PROTECTION ZONE</li> <li><span style="display: inline-block; width: 10px; height: 10px; background-color: green; border-radius: 50%; margin-right: 5px;"></span> SURVEYED TREE</li> <li><span style="display: inline-block; width: 10px; height: 10px; border: 1px solid green; border-radius: 50%; margin-right: 5px;"></span> UNSURVEYED TREE</li> </ul>	<p>DATE</p> <p style="text-align: center;">June 21, 2012</p> <div style="display: flex; align-items: center; justify-content: center;"> <p><b>DIAMOND HEAD CONSULTING LTD.</b> 342 WEST 8TH AVENUE VANCOUVER, BC V5Y 3X2 PHONE 604.733.4886</p> </div>	<p>CLIENT</p> <p>UBC Properties Trust Suite 101 - 555 Great Northern Way Vancouver, BC V5T 1E2</p> <p>TITLE</p> <p>TREE PROTECTION PLAN Ponderosa Building Expansion</p>
--	---	--	--