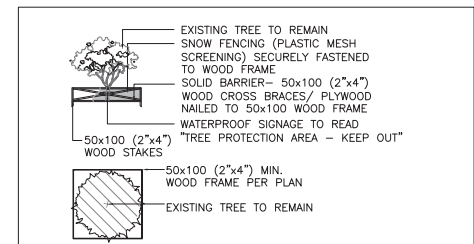


- TREE PROTECTION NOTES**
1. NO STORAGE OF BUILDING /CONSTRUCTION MATERIALS WITHIN PROTECTED AREAS OR AGAINST PROTECTION BARRIER.
 2. ANY PRUNING OF BRANCHES OR ROOTS MUST BE DONE BY THE PROJECT ARBORIST.
 3. CONTRACTOR TO UNDERTAKE TREE PROTECTION MEASURES TO UNIVERSITY OF BRITISH COLUMBIA STANDARDS.
 4. HAND EXCAVATE ONLY WITHIN DRILLPIPE OF TREES TO BE RETAINED. SEVER ROOTS CLEANLY. CONTACT PROJECT ARBORIST FOR APPROVAL PRIOR TO SEVERING ROOTS IN EXCESS OF 100mm DIA.
 5. TREE PROTECTION FENCE IS NOT TO BE LIFTED OR REMOVED AT ANY TIME FOR VEHICULAR ACCESS. VEHICLES AND HEAVY EQUIPMENT CAN CAUSE SOIL COMPACTION IN THE ROOT ZONE DEPLETING THE AIR SPACE THAT IS ESSENTIAL TO THE TREE'S HEALTH.
 6. LOCATION OF TREE PROTECTION FENCING AND LIMIT OF ACCESS FENCING TO BE VERIFIED WITH CONSULTANT PRIOR TO INSTALLATION. TREE PROTECTION FENCING TO BE MOVED ONLY UNDER THE DIRECTION OF THE CONSULTANT DURING FINAL GRADING OF KNOLL.
 7. BASED ON CONTRACTOR'S STAGING AND ACCESS REQUIREMENTS, ADDITIONAL TREE PROTECTION FENCING MAY BE REQUIRED.
 8. PER CAMPUS ARBORIST RECOMMENDATION, INSTALL 6' HIGH METAL FENCE ALONG EAST CURB LINE AS PRIMARY PROTECTION MEASURE FOR EXISTING TREES.



TREE PROTECTION FENCE
SCALE: 1:20

- TREE REMOVAL SCHEDULE**
1. 440mm, pine
 2. 400mm, pine
 3. 310mm, pine
 4. 330mm, spruce

Contractor must check and verify all dimensions on the job, and report any discrepancies to the Architect before proceeding with the work. Do not make this drawing.

REVISIONS AND ISSUES

REV	DESCRIPTION	DATE	BY
1	ISSUED FOR I/P	APRIL 25, 2013	AOA/MAA
2			
3			
4			
5			
6			
7			
8			

MJMA + AOA
ARCHITECTS

KAMPS ENGINEERING LTD.
CIVIL ENGINEERS
79 CHESTER AVE.
TORONTO, ON M4W 1G7
TEL: (416) 464-6200

PHILLIPS FAREVAAG SMALLENBERG
LANDSCAPE ARCHITECTS
1777 WEST 34th AVE
VANCOUVER, BC V6L 1A7
TEL: (604) 726-5146 FAX: (604) 726-5147

EQUILIBRIUM
STRUCTURAL ENGINEERS
222-208 W 8th AVENUE
VANCOUVER, BC V5Y 5G2
TEL: (604) 726-1422 FAX: (604) 726-8191

AME CONSULTING GROUP
MECHANICAL ENGINEERS
601-134 ARBUTHNOT STREET
VANCOUVER, BC V6B 2A4
TEL: (604) 684-5945 FAX: (604) 684-5945

APPLIED ENGINEERING SOLUTIONS
ELECTRICAL ENGINEERS
400-600 WEST PENDER STREET
VANCOUVER, BC V6C 1S4
TEL: (604) 589-8500 FAX: (604) 589-8501

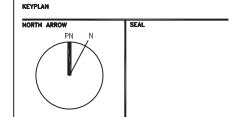
WIT TECHNOLOGIES
AGRICULTURAL CONSULTANTS
100 FINEWICH AVENUE
REDFER, ONT. M5A 1S4
TEL: (416) 887-7395 FAX: (416) 887-7395

LEMO
CODE CONSULTANTS
4th FLOOR - 780 BEATTY ST.
VANCOUVER, BC V6B 3M1
TEL: (604) 682-7146 FAX: (604) 682-7146

RECOLLECTIVE
LIFE/ENVIRONMENTAL CONSULTANTS
210-108 WEST HASTINGS STREET
VANCOUVER, BC V6B 1G5
TEL: (604) 684-4940 FAX: (604) 684-4940

DANIEL LYZUN & ASSOCIATES
AGRICULTURAL CONSULTANTS
367-901 WEST 34th STREET
NORTH VANCOUVER, BC V7P 3P9
TEL: (604) 968-8800

UNIVERSITY OF BRITISH COLUMBIA
2220 WEST MALL
VANCOUVER, BC CANADA V6T 1Z4
© 2013/03/21



PROJECT TITLE
UBC AQUATIC CENTRE

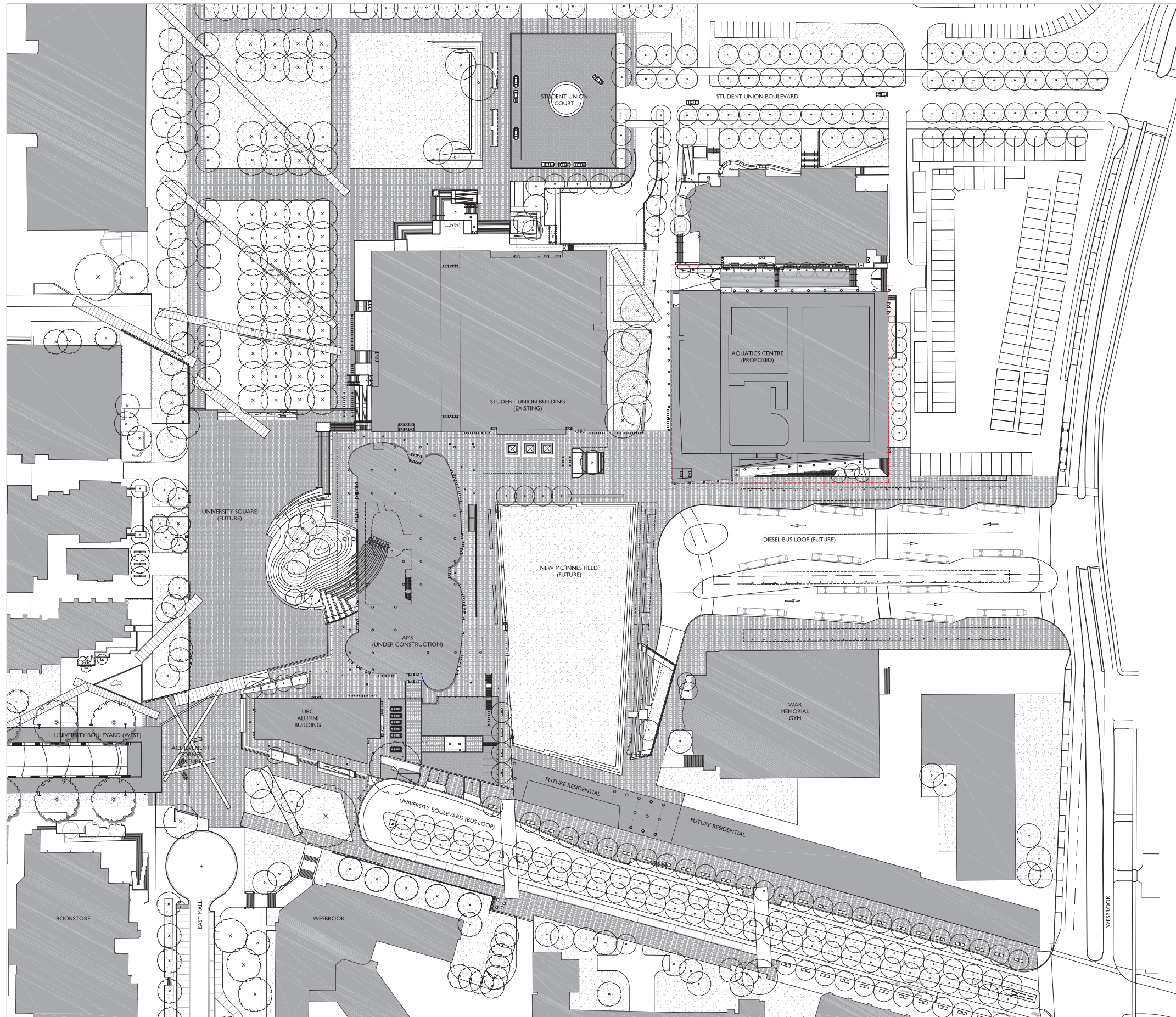
DRAWING TITLE
TREE REMOVAL

SCALE
1:500

DATE
APRIL 2013

PROJECT NUMBER
1208

DRAWING NUMBER
L0.1



Contractor must check and verify all dimensions on the job, and report any discrepancies to the Architect before proceeding with the work. Do not make this drawing.

REV	DESCRIPTION	DATE	BY
1	ISSUED FOR I/P	APRIL 25, 2013	AOA/AMM
2			
3			
4			
5			
6			
7			
8			

MJMA + AOA

ARCHITECTS
 1000 WEST 10TH AVENUE
 VANCOUVER, BC V6H 3G5
 TEL: (604) 681-1111 FAX: (604) 681-1112

KAMPS ENGINEERING LTD.

CIVIL ENGINEERS
 79 CHESTNUT AVE.
 TORONTO, ON M5R 1S7
 TEL: (416) 461-6200

PHILLIPS FAREVAAG SMALLENBERG

LANDSCAPE ARCHITECTS
 1777 WEST 24th AVE.
 VANCOUVER, BC V6K 1A7
 TEL: (604) 726-0446 FAX: (604) 726-0107

EQUILIBRIUM

STRUCTURAL ENGINEERS
 232-208 W 8th AVENUE
 VANCOUVER, BC V5Y 1S2
 TEL: (604) 726-1422 FAX: (604) 726-8191

AME CONSULTING GROUP

METEOROLOGICAL ENGINEERS
 601-134 ARBUTHNOT STREET
 VANCOUVER, BC V6B 2Y4
 TEL: (604) 684-5881 FAX: (604) 684-5881

APPLIED ENGINEERING SOLUTIONS

ELECTRICAL ENGINEERS
 400-400 WEST PENDER STREET
 VANCOUVER, BC V6C 1S4
 TEL: (604) 589-8500 FAX: (604) 589-8501

WTI TECHNOLOGIES

ACoustic CONSULTANTS
 100 BINK MEYER
 BENDER OAK, WI USA 53116
 TEL: (262) 887-7395 FAX: (262) 887-7898

LEMO

CODE CONSULTANTS
 4th FLOOR - 780 BROAD ST.
 VANCOUVER, BC V6B 2M1
 TEL: (604) 682-7146 FAX: (604) 682-7146

RECOLLECTIVE

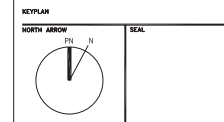
LEED/FASTTRACK CONSULTANTS
 210-108 WEST HASTINGS STREET
 VANCOUVER, BC V6B 1G5
 TEL: (604) 684-6942 FAX: (604) 684-6942

DANIEL LYZUN & ASSOCIATES

ACOUSTIC CONSULTANTS
 367-901 WEST 34th STREET
 NORTH VANCOUVER, BC V7P 3P9
 TEL: (604) 468-8000

UNIVERSITY OF BRITISH COLUMBIA

2209 WEST MALL
 VANCOUVER, BC CANADA V6T 1Z4
 © 2012 UBC



PROJECT TITLE
UBC AQUATIC CENTRE

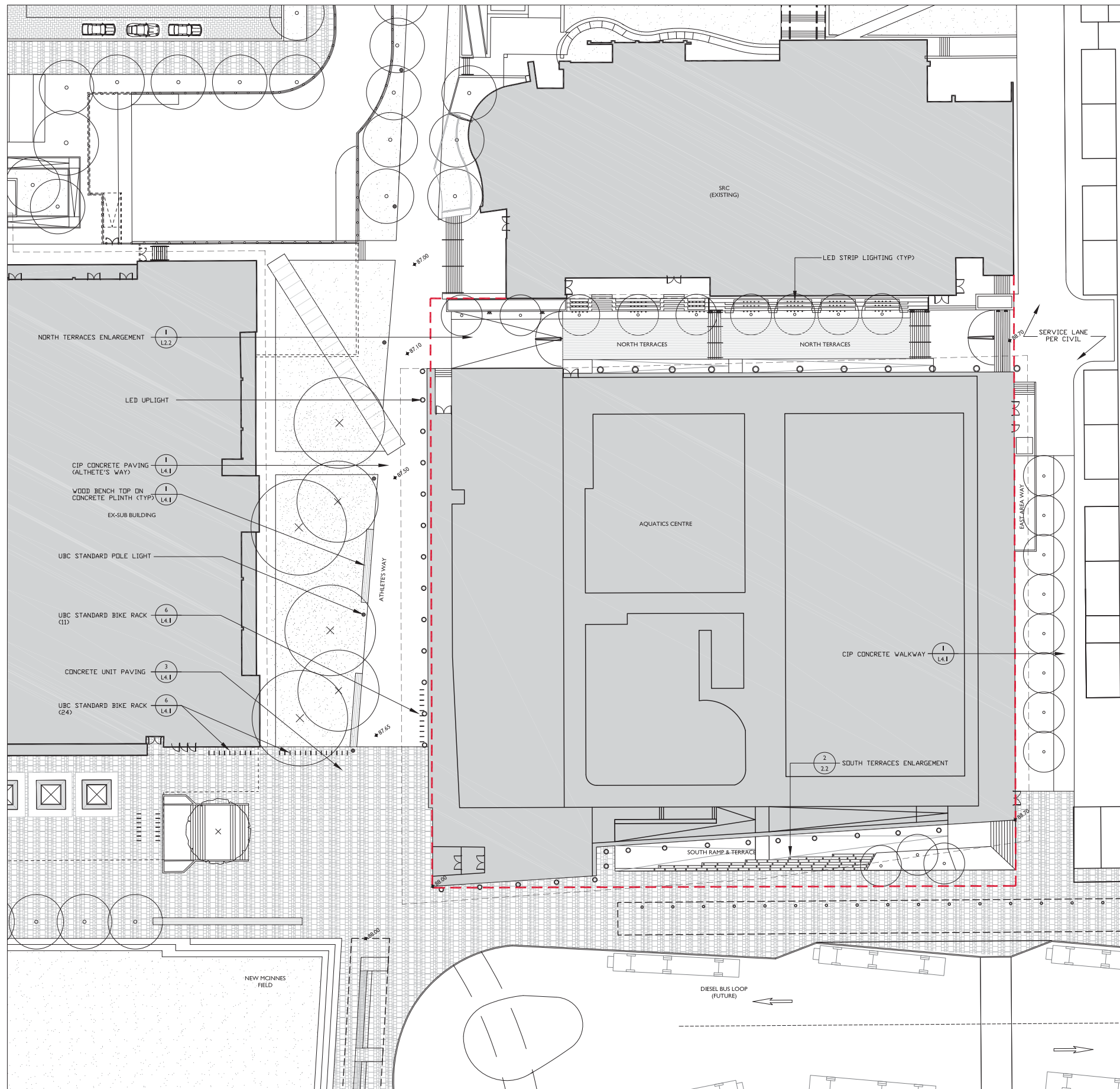
DRAWING TITLE
**GAGE SOUTH PRECINCT
 CONTEXT PLAN**

SCALE
1:500

DATE
APRIL 2013

PROJECT NUMBER
1208

DRAWING NUMBER
L0.2



TYPICAL MATERIALS

CONCRETE UNIT PAVING **SAW CUT CONCRETE**

WOOD AND CONCRETE SEATING SURFACES/“BLEACHERS”

WOOD DECKING (NORTH TERRACES) **UBC STANDARD BIKE RACK**

LIGHTING

POLE LIGHTING **INTEGRATED WALL LIGHTS/STEP LIGHTS**

LIGHTING LEGEND

- UBC STANDARD POLE LIGHT (ALTHEES WAY)
- ⊞ INTEGRATED WALL LIGHTING/STEP LIGHT (NORTH TERRACES)
- LED UPLIGHT (BUILDING PERIMETER)
- ⚡ LED STRIP LIGHTING (BLEACHER FEATURES)

Contractor must check and verify all dimensions on the job, and report any discrepancies to the Architect before proceeding with the work. Do not make this drawing.

REVISIONS AND ISSUES			
REV	DESCRIPTION	DATE	BY
1	ISSUED FOR I/P	APRIL 25, 2013	AM/AMM
2			
3			
4			
5			
6			
7			
8			

MJMA + AOA
 ARCHITECTS
 1100 WEST 4TH AVENUE
 VANCOUVER, BC V6H 3K7
 TEL: (604) 681-1111 FAX: (604) 681-1112

KAMPS ENGINEERING LTD.
 CIVIL ENGINEERS
 79 CHESTNUT AVE.
 TORONTO, ON M4W 1S7
 TEL: (416) 461-6200

PHILLIPS FAREVAAG SMALLENBERG
 LANDSCAPE ARCHITECTS
 1777 WEST 34th AVE.
 VANCOUVER, BC V6V 1K7
 TEL: (604) 726-5146 FAX: (604) 726-5147

EQUILIBRIUM
 STRUCTURAL ENGINEERS
 232-208 W 8th AVENUE
 VANCOUVER, BC V5Y 1S2
 TEL: (604) 726-1422 FAX: (604) 726-8191

AMC CONSULTING GROUP
 ARCHITECTS
 601-134 ARBUTT STREET
 VANCOUVER, BC V6B 2V4
 TEL: (604) 684-5841 FAX: (604) 684-5841

APPLIED ENGINEERING SOLUTIONS
 ELECTRICAL ENGINEERS
 400-400 WEST PENDER STREET
 VANCOUVER, BC V6C 1S4
 TEL: (604) 689-8500 FAX: (604) 689-8501

WTI TECHNOLOGIES
 ARCHITECTURAL CONSULTANTS
 100 PARK AVENUE
 BENDER, WA, USA 98251
 TEL: (509) 897-7395 FAX: (509) 897-7898

LEMO
 CODE CONSULTANTS
 4th FLOOR - 780 BEATTY ST.
 VANCOUVER, BC V6B 2M1
 TEL: (604) 682-7146 FAX: (604) 682-7146

RECOLLECTIVE
 LEED/FASTTRACK CONSULTANTS
 210-108 WEST HASTINGS STREET
 VANCOUVER, BC V6B 1G8
 TEL: (604) 683-4942 FAX: (604) 683-4942

DANIEL LYZUN & ASSOCIATES
 ARCHITECTS
 367-901 WEST 34th STREET
 NORTH VANCOUVER, BC V7P 3P9
 TEL: (604) 468-8000

UNIVERSITY OF BRITISH COLUMBIA
 2209 WEST MALL
 VANCOUVER, BC CANADA V6T 1Z4
 © 2012/05/2011

KEYPLAN

PROJECT TITLE
UBC AQUATIC CENTRE

DRAWING TITLE
SITE PLAN

SCALE
1:200

DATE
APRIL 2013

PROJECT NUMBER
1208

DRAWING NUMBER
L2.1

Contractor must check and verify all dimensions on the job, and report any discrepancies to the Architect before proceeding with the work.
Do not make this drawing.

REV	DESCRIPTION	DATE	BY
1	ISSUED FOR I/P	APRIL 25, 2013	AOA/AMM
2			
3			
4			
5			
6			
7			
8			

MJMA + AOA
ARCHITECTS

KAMPS ENGINEERING LTD.
CIVIL ENGINEERS

PHILLIPS FARVAG SMLLENBERG
LANDSCAPE ARCHITECT

EQUILIBRIUM
STRUCTURAL ENGINEERS

AME CONSULTING GROUP
MECHANICAL ENGINEERS

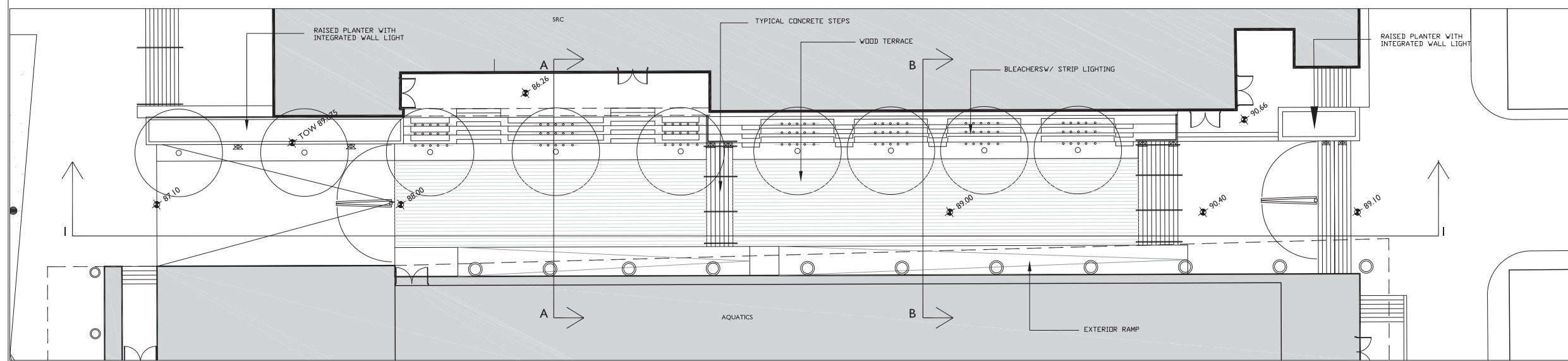
APPLIED ENGINEERING SOLUTIONS
ELECTRICAL ENGINEERS

WTI TECHNOLOGIES
ACQUATIC CONSULTANTS

LEMO
CODE CONSULTANTS

RECOLLECTIVE
LIFE/PERFORMANCE CONSULTANTS

DANIEL LYZUN & ASSOCIATES
ACQUATIC CONSULTANTS



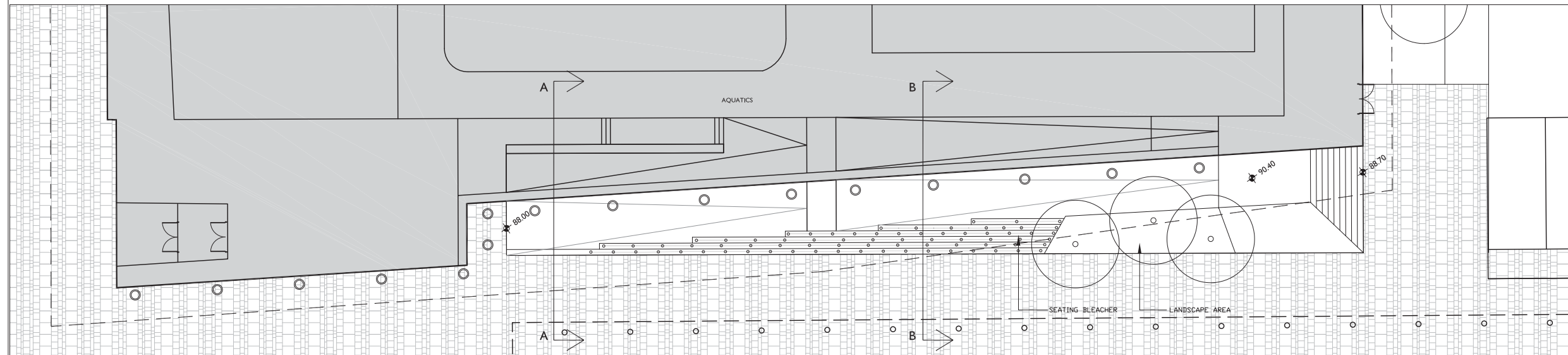
NORTH TERRACES ENLARGEMENT 1:100
1/L2.2

NORTH TERRACES DESIGN INTENT



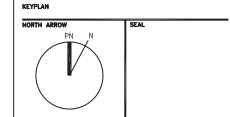
WOOD BLEACHERS AGAINST STUDENT RECREATION CENTRE

WOOD TERRACE FOR OUTDOOR CLASSES WARM UP AREA



SOUTH RAMP AND TERRACES ENLARGEMENT 1:100
2/L2.2

UNIVERSITY OF BRITISH COLUMBIA
2220 WEST MALL
VANCOUVER, BC CANADA V6T 1Z4
© 2012 UBC



PROJECT TITLE
UBC AQUATIC CENTRE

DRAWING TITLE
**SITE PLAN
AREA ENLARGEMENTS**

SCALE
1:100

DATE
APRIL 2013

PROJECT NUMBER
1208
DRAWING NUMBER
L2.2

Contractor must check and verify all dimensions on the job, and report any discrepancies to the Architect before proceeding with the work.
Do not make this drawing.

REV	DESCRIPTION	DATE	BY
1	ISSUED FOR I/P	APRIL 25, 2013	AOA/MAA
2			
3			
4			
5			
6			
7			
8			

MJMA + AOA

ARCHITECTS
1000 WEST 10TH AVENUE
VANCOUVER, BC V6H 2V6
TEL: (604) 681-1111 FAX: (604) 681-1112

KAMPS ENGINEERING LTD.

CIVIL ENGINEERS
79 CHESTNUT AVE.
TORONTO, ON M5R 1S7
TEL: (416) 461-6200

PHILLIPS FAREVAAG SMALLENBERG

LANDSCAPE ARCHITECTS
1777 WEST 24th AVE.
VANCOUVER, BC V6K 1K7
TEL: (604) 726-5141 FAX: (604) 726-5147

EQUILIBRIUM

STRUCTURAL ENGINEERS
222-208 W 8th AVENUE
VANCOUVER, BC V5Y 2G2
TEL: (604) 726-1422 FAX: (604) 726-8191

AME CONSULTING GROUP

MECHANICAL ENGINEERS
601-134 ARBUTHOT STREET
VANCOUVER, BC V6K 2V4
TEL: (604) 684-5881 FAX: (604) 684-5881

APPLIED ENGINEERING SOLUTIONS

ELECTRICAL ENGINEERS
400-600 WEST PENDER STREET
VANCOUVER, BC V6C 1S6
TEL: (604) 589-8500 FAX: (604) 589-8501

WTI TECHNOLOGIES

ACoustic CONSULTANTS
100 PARK AVENUE
BENEFIT CAN, W. USA 53116
TEL: (202) 887-7310 FAX: (202) 887-7898

LEMO

CODE CONSULTANTS
4th FLOOR - 780 BROAD ST.
VANCOUVER, BC V6K 3M1
TEL: (604) 682-7140 FAX: (604) 682-7140

RECOLLECTIVE

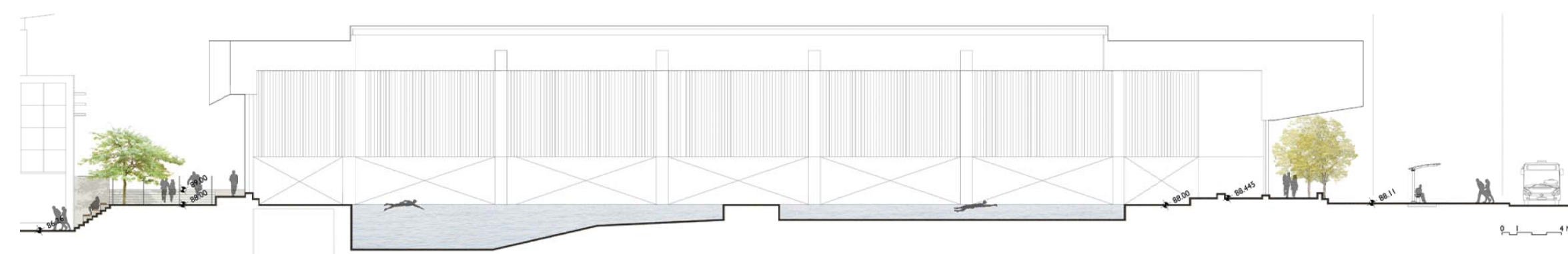
LEED/ENVIRONMENTAL CONSULTANTS
210-108 WEST HASTINGS STREET
VANCOUVER, BC V6K 1G8
TEL: (604) 688-4940 FAX: (604) 688-4940

DANIEL LYZUN & ASSOCIATES

ACoustic CONSULTANTS
367-901 WEST 34th STREET
VANCOUVER, BC V7P 3P9
TEL: (604) 688-8000

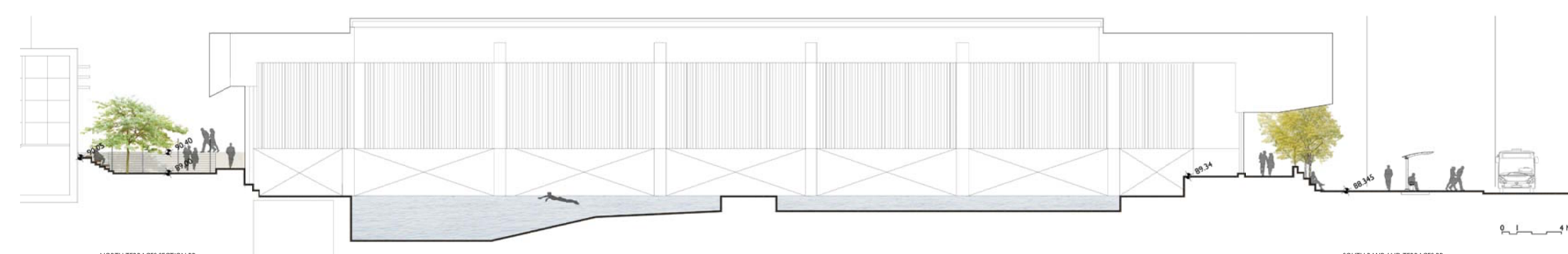


NORTH TERRACES EAST/WEST SECTION ELEVATION I-I



NORTH TERRACES SECTION AA

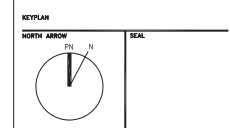
SOUTH RAMP AND TERRACES AA



NORTH TERRACES SECTION BB

SOUTH RAMP AND TERRACES BB

UNIVERSITY OF BRITISH COLUMBIA
2220 WEST MALL
VANCOUVER, BC CANADA V6T 1Z4
© 2012 UBC



PROJECT TITLE
UBC AQUATIC CENTRE

DRAWING TITLE
SITE PLAN SECTIONS

SCALE
1:100

DATE
APRIL 2013

PROJECT NUMBER
1208

DRAWING NUMBER
L2.3

Contractor must check and verify all dimensions on the job, and report any discrepancies to the Architect before proceeding with the work. Do not make this drawing.

REV	DESCRIPTION	DATE	BY
1	ISSUED FOR IP	APRIL 25, 2013	AOA/MAA
2			
3			
4			
5			
6			
7			
8			

MJMA + AOA
 ARCHITECTS
 1000 WEST 10TH AVENUE
 VANCOUVER, BC V6H 2V6
 TEL: (604) 681-8100 FAX: (604) 681-8101

KAMPS ENGINEERING LTD.
 CIVIL ENGINEERS
 79 CHESTNUT AVE.
 TORONTO, ON M5R 1S7
 TEL: (416) 461-6200

PHILLIPS FAREVAAG SMALLENBERG
 LANDSCAPE ARCHITECTS
 1777 WEST 24th AVE
 VANCOUVER, BC V6K 1A7
 TEL: (604) 726-5146 FAX: (604) 726-5147

EQUILIBRIUM
 STRUCTURAL ENGINEERS
 222-208 W 8th AVENUE
 VANCOUVER, BC V5Y 5S2
 TEL: (604) 726-1422 FAX: (604) 726-8191

AME CONSULTING GROUP
 MECHANICAL ENGINEERS
 801-134 ARBUTT STREET
 VANCOUVER, BC V6B 2V4
 TEL: (604) 684-5861 FAX: (604) 684-5861

APPLIED ENGINEERING SOLUTIONS
 ELECTRICAL ENGINEERS
 400-600 WEST PENDER STREET
 VANCOUVER, BC V6C 1S4
 TEL: (604) 589-8500 FAX: (604) 589-8501

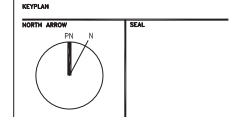
WTI TECHNOLOGIES
 AQUATIC CONSULTANTS
 100 BIRCH AVENUE
 BENDER, WA, USA 98251
 TEL: (509) 887-7395 FAX: (509) 887-7898

LEMO
 CODE CONSULTANTS
 4th FLOOR - 780 BROAD ST.
 VANCOUVER, BC V6B 3H1
 TEL: (604) 682-7146 FAX: (604) 682-7146

RECOLLECTIVE
 LULU/PLANTABLE CONSULTANTS
 210-108 WEST HASTINGS STREET
 VANCOUVER, BC V6B 1G8
 TEL: (604) 684-6940 FAX: (604) 684-6940

DANIEL LYZUN & ASSOCIATES
 ROBOTIC CONSULTANTS
 367-901 WEST 34th STREET
 NORTH VANCOUVER, BC V7P 3P9
 TEL: (604) 988-8000

UNIVERSITY OF BRITISH COLUMBIA
 2220 WEST MALL
 VANCOUVER, BC CANADA V6T 1Z4
 © 2012/05/21



PROJECT TITLE
UBC AQUATIC CENTRE

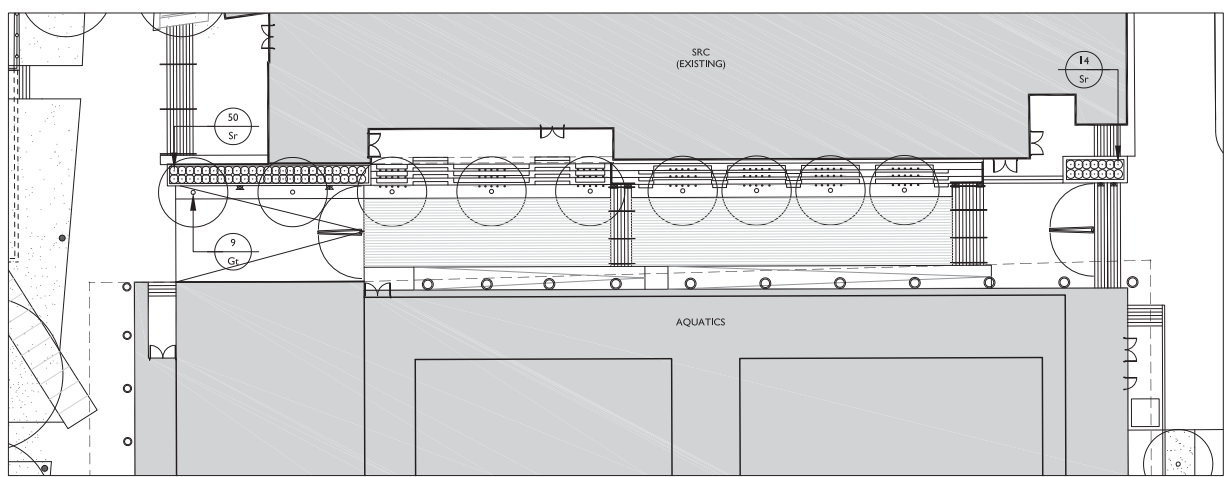
DRAWING TITLE
PLANTING PLAN

SCALE
AS NOTED

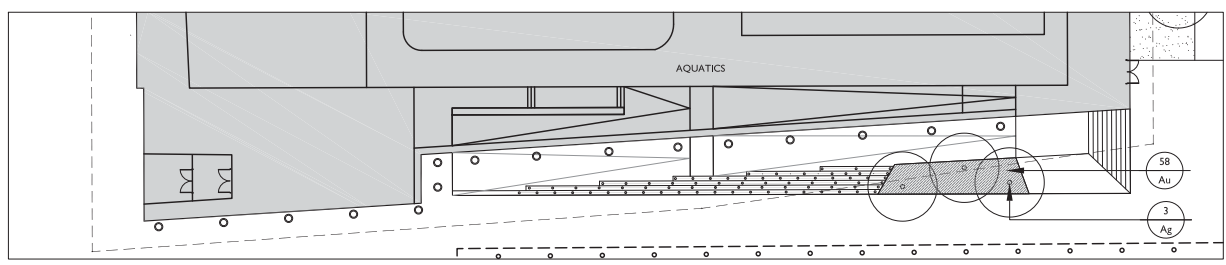
DATE
APRIL 2013

PROJECT NUMBER
1208

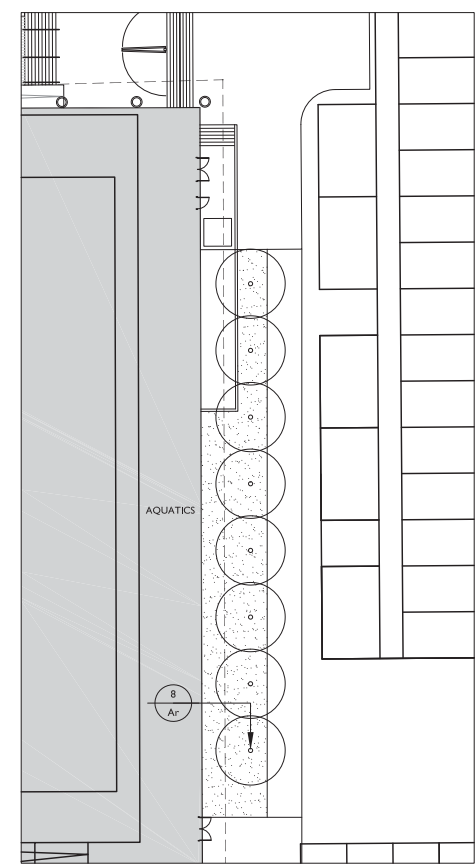
DRAWING NUMBER
L3.1



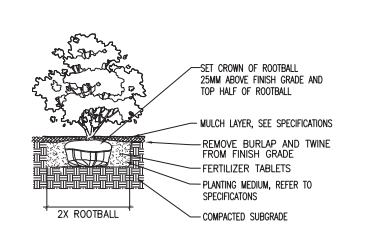
L3.1 NORTH TERRACE
 SCALE: 1:200



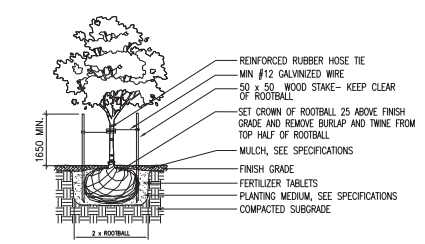
L3.1 SOUTH TERRACE
 SCALE: 1:200



L3X EAST FACADE
 SCALE: 1:200



L3X SHRUB PLANTING (TYP)
 SCALE: 1:20



L3X TREE PLANTING (TYP)
 SCALE: 1:20



PLANTING PALETTE

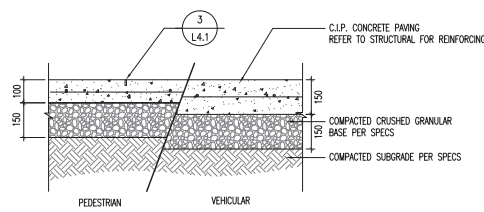
PLANTING SCHEDULE

TREES					
QTY	KEY	BOTANICAL NAME	COMMON NAME	SIZE	NOTES
(3)	Ag	Acer griseum	Paperbark Maple	6cm cal.	
(8)	Ar	Acer rubrum 'Armstrong'	Armstrong Red Maple	7cm cal.	
(9)	Gl	Gleditsia triacanthos inermis 'Skyline'	Honey Locust	7cm cal.	

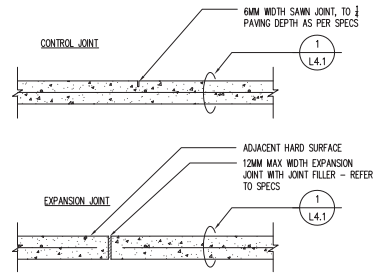
SHRUBS/GROUND COVER					
QTY	KEY	BOTANICAL NAME	COMMON NAME	SIZE	NOTES
(58)	Au	Arctostaphylos uva-ursi	Kinnikinnick	#2 pot/750mmO.C.	Full/matched
(64)	Sr	Sarcococca ruscifolia	Fragrant Sweet Box	#5 pot/600mmO.C.	Full/matched

PLANTING NOTES

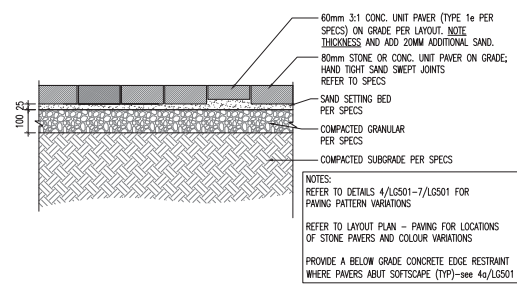
- ALL LANDSCAPE BEDS TO RECEIVE IRRIGATION PER UBC STANDARDS



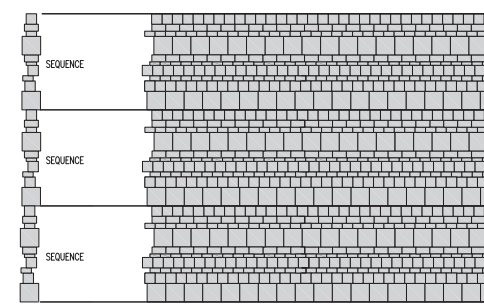
1 C.I.P. CONCRETE PAVING - ON GRADE
L4.1 SCALE: 1:10



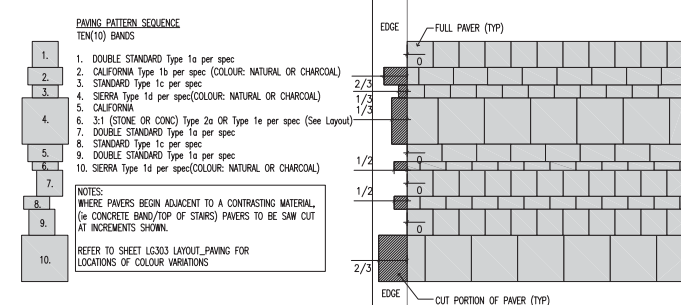
2 CONTROL AND EXPANSION JOINTS
L4.1 SCALE: 1:10



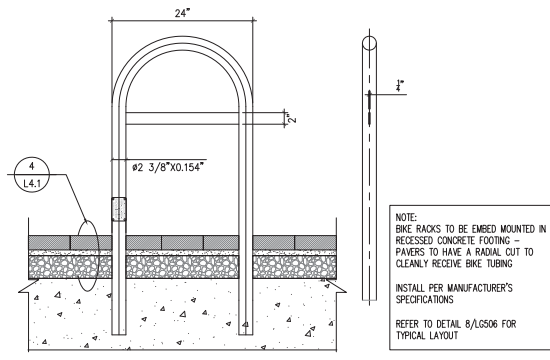
3 UNIT PAVER PAVING SECTION (TYP)
L4.1 SCALE: 1:10



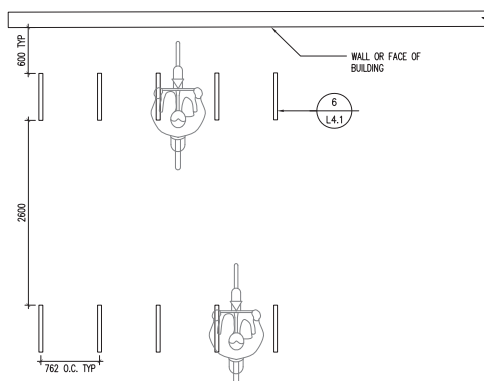
4 CONCRETE UNIT PAVING
L4.1 SCALE: 1:50



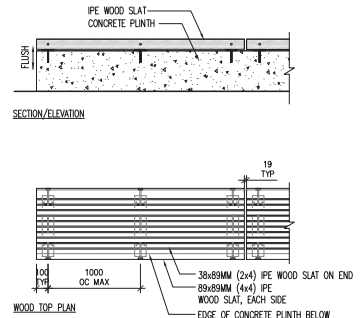
5 CONCRETE UNIT PAVING - CUT EDGE CONDITION
L4.1 SCALE: 1:20



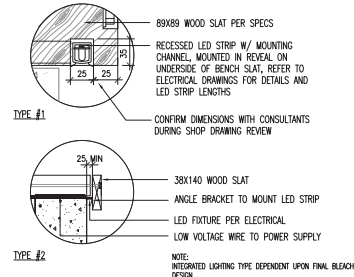
6 UBC STANDARD BIKE RACK-EMBED MOUNT
L4.1 SCALE: 1:10



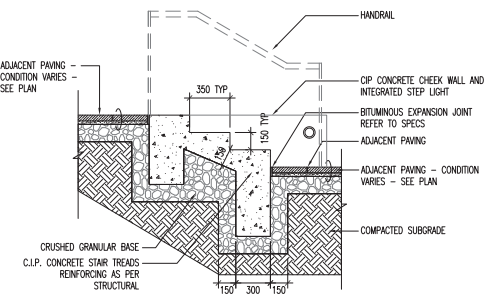
7 BICYCLE RACK LAYOUT - TYP
L4.1 SCALE: 1:30



8 TYPICAL WOOD BENCH TOP ON CONC. PLINTH
L4.1 SCALE: 1:30



9 BLEACHER STRIP LIGHTING
L4.1 SCALE: 1:10



10 TYPICAL CIP CONCRETE STAIR WITH STEP LIGHT
L4.1 SCALE: 1:10

Contractor must check and verify all dimensions on the job, and report any discrepancies to the Architect before proceeding with the work. Do not make this drawing.

REV	DESCRIPTION	DATE	BY
1	ISSUED FOR I/P	APRIL 25, 2013	AOA/MAA
2			
3			
4			
5			
6			
7			
8			

MJMA + AOA
ARCHITECTS

KAMPS ENGINEERING LTD.
CIVIL ENGINEERS

PHILLIPS FAREVAAG SMALLENBERG
LANDSCAPE ARCHITECTS

EQUILIBRIUM
STRUCTURAL ENGINEERS

AME CONSULTING GROUP
MECHANICAL ENGINEERS

APPLIED ENGINEERING SOLUTIONS
ELECTRICAL ENGINEERS

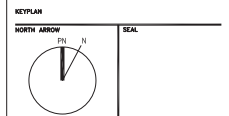
WTI TECHNOLOGIES
ACoustic CONSULTANTS

LEMO
CODE CONSULTANTS

RECOLLECTIVE
LEAD/PASTORAL CARE CONSULTANTS

DANIEL LYZUN & ASSOCIATES
ACoustic CONSULTANTS

UNIVERSITY OF BRITISH COLUMBIA
2220 WEST MALL
VANCOUVER, BC CANADA V6T 1Z4
© 2012/2011



PROJECT TITLE
UBC AQUATIC CENTRE

DRAWING TITLE
TYPICAL DETAILS

SCALE
AS NOTED

DATE
APRIL 2013

PROJECT NUMBER
1208

DRAWING NUMBER
L4.1