



UBC Properties Trust
Suite 200 - 3313 Shrum Lane
Vancouver, British Columbia
Canada V6S 0C87

March 1, 2017

Attention: Dan Giordano

Re: Totem Phase 2 – Arborist Site Visit

An arborist report prepared by this office was submitted for the Totems Phase 2 project dated January 18, 2016. In this report there were a number red alder trees identified to the west of the project towards West Mall. Many of these red alder trees were subsequently removed to allow additional laydown for construction materials and work space for the project. **Sixty-seven red alder trees remain at the site¹.** The stand is shown in the red box in Figure 1. These trees are all are part of a planted stand that have grown together as a group and rely on one another for structural stability. In addition many of them contain structural defects (codominant or multiple stems emanating from included bark) that make them unsuitable as trees to retain adjacent to structures or people. The trees measure on average 15-30cm in diameter at breast height and their heights reaching up to 20m. It is not possible to retain individual or small groups of trees in a tree stand of this nature as they will be prone to windfall. Figure 1 below shows the planted red alder stand prior to its western edge being partially removed for laydown construction.



Figure 1. The red box indicates the entire red alder stand before some of it was removed (67 trees remain).

¹ A tree is counted as one even though it may have multiple stems emanating from a single point above the ground.

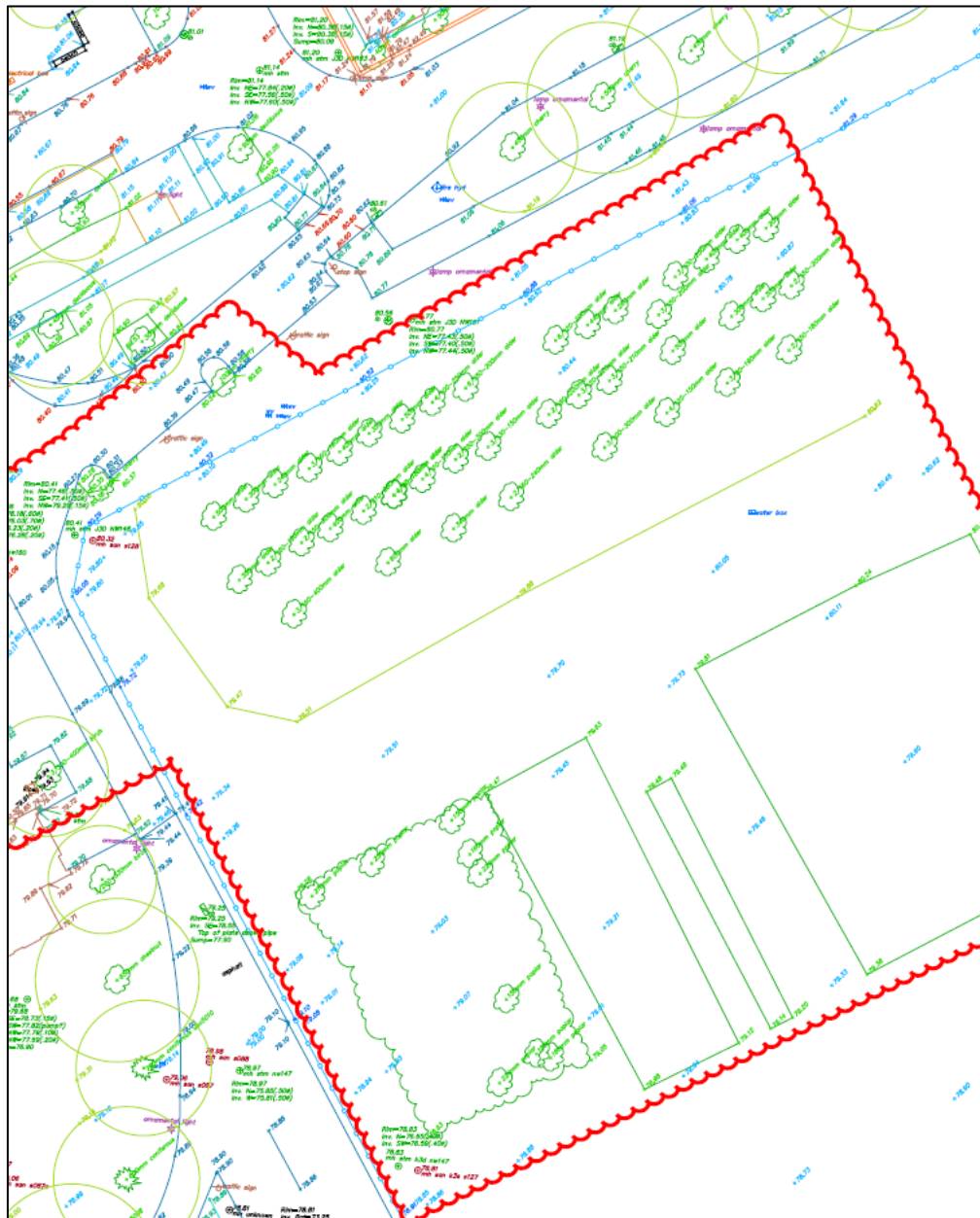


Figure 2. The tree survey indicating the alder trees in the upper section of the photo. Note that only a portion of the stand is indicated.

Photographs



Photo 1. Looking west along the length of the stand.



Photo 2 Looking at the red alder stand. Note that almost every tree is made up of multiple stems emanating from the base.



Photo 3. Looking into the stand.



Photo 4. Note that a chain link fence surrounds the stand. Tree protection of the street trees on the east and north side will be required.

If you have any questions about the findings of this memo, please don't hesitate to call us.

Sincerely,

Trevor Cox, RPP
ISA Certified Arborist (PN1920A)
Certified Tree Risk Assessor (43)
BC Parks Wildlife and Danger Tree Assessor

Phone: 604-733-4886
Fax: 604-733-4879
Email: trevor@diamondheadconsulting.com
Website: www.diamondheadconsulting.com