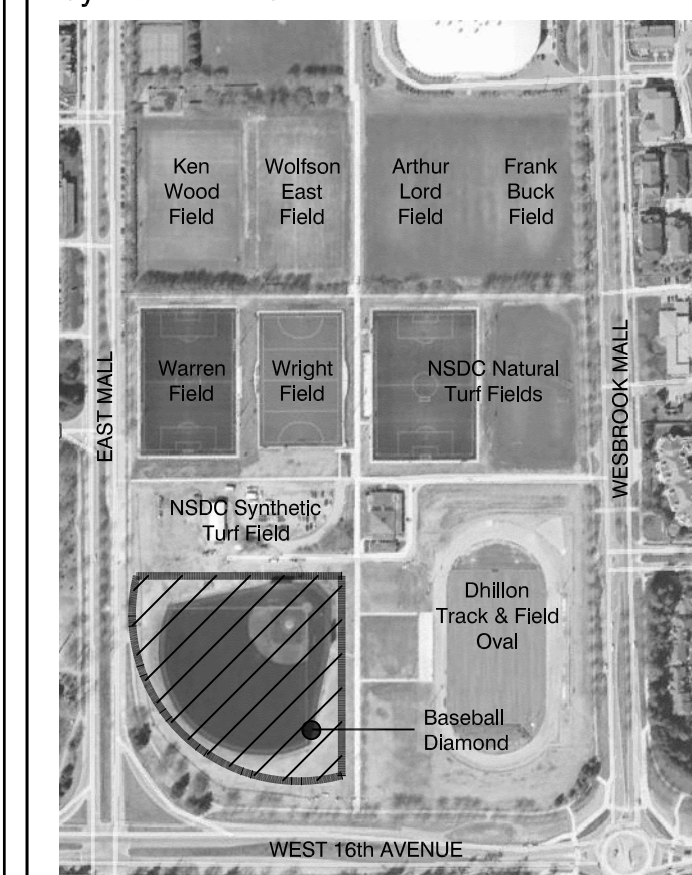


Key Plan - N.T.S.



Legend

UBC

UBC PROPERTIES TRUST

No	Date	Revisions	By

No	Date	Revisions	By

This drawing, as an instrument of service, is provided by, and is the property of, the MBTW Group. The contractor shall check and verify all dimensions and report all errors and omissions to the Landscape Architect whose seal is affixed to this drawing before proceeding with work. This drawing is not to be scaled.

Designed By

North Arrow

the mbtw group

255 Westland Ave., Unit 14 Toronto, Ontario, Canada M6L 1S8
 T: (416) 461-7767 F: (416) 461-1851 www.mbtw.com

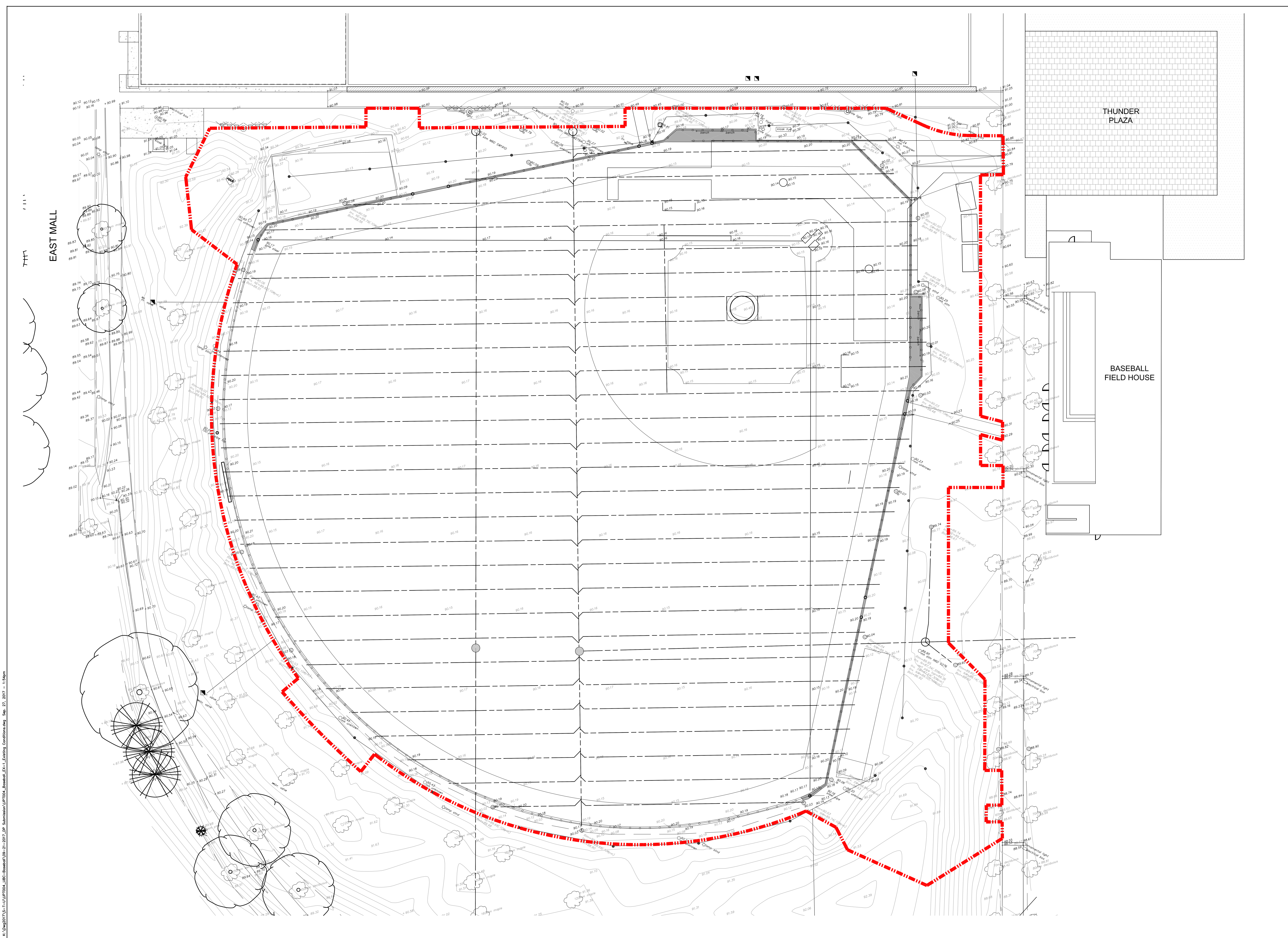
RICHARD FINDLAY
 LANDSCAPE ARCHITECT INC

Project Name:
**Baseball Diamond
 Thunderbird Park**

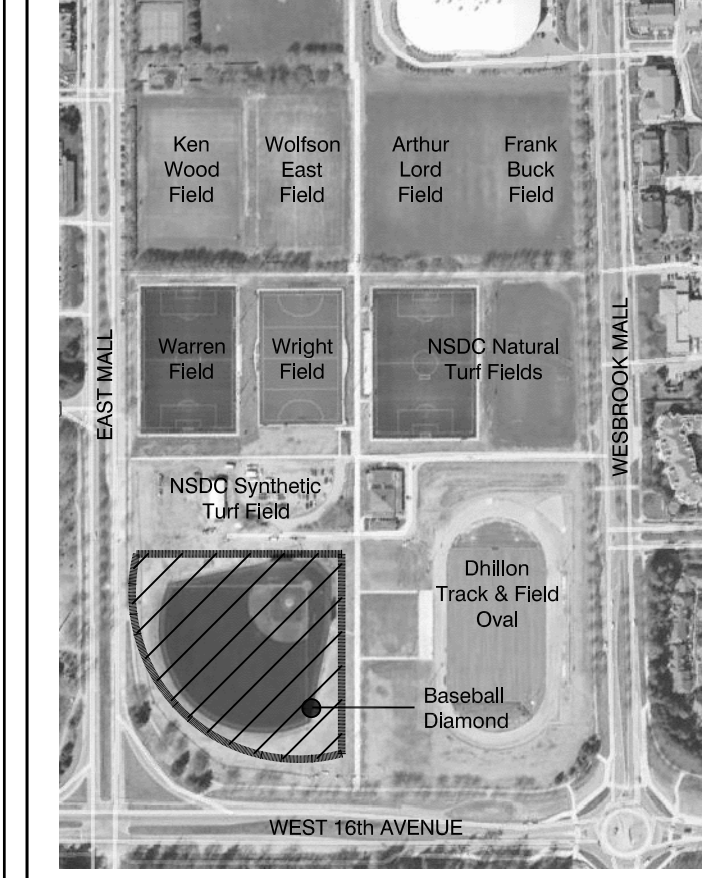
Municipality: University of British Columbia

Sheet Title:
CONTEXT PLAN

Designed: JDJ	Drawn: OL	Scale: N.T.S.	Drawing No.:
Date of Drawing: September 2017	Job No.:	UPT 004	C-1



Key Plan - N.T.S.



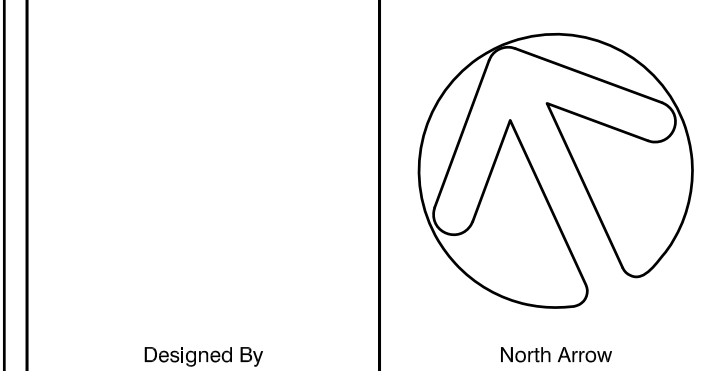
Legend

--- APPROXIMATE LIMIT OF WORK



No	Date	Revisions	By

This drawing, as an instrument of service, is provided by, and is the property of, the MBTW Group. The contractor shall check and verify all dimensions and report all errors and omissions to the Landscape Architect whose seal is affixed to this drawing before proceeding with work. This drawing is not to be scaled.



Designed By: the mbtw group
 255 Westland Ave., Unit 14 Toronto, Ontario, Canada M6L 1S8
 T: (416) 461-7767 F: (416) 461-1851 www.mbtw.com

RICHARD FINDLAY
 LANDSCAPE ARCHITECT INC.

Project Name:

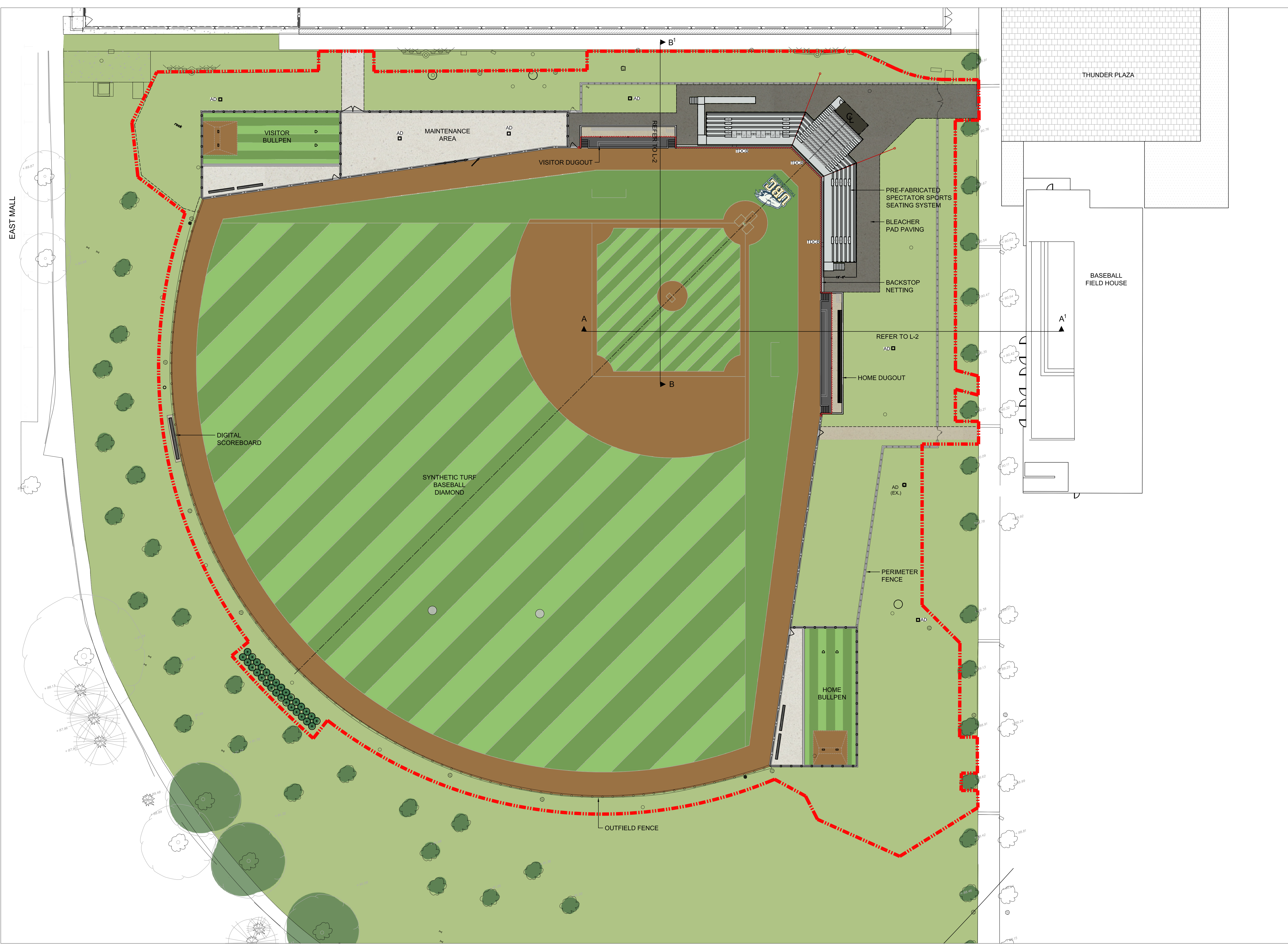
**Baseball Diamond
 Thunderbird Park**

Municipality: University of British Columbia

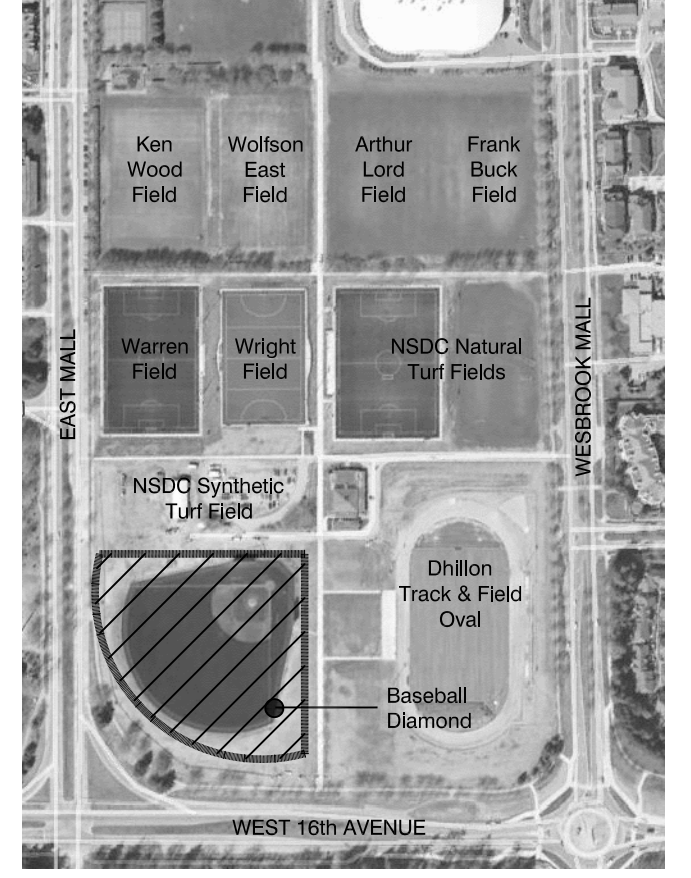
Sheet Title:

**SITE SURVEY AND
 EXISTING CONDITIONS PLAN**

Designed: JDJ	Drawn: OL	Scale: 1:300	Drawing No.: EX-1
Date of Drawing: September 2017	Job No.: UPT 004		



Key Plan - N.T.S.



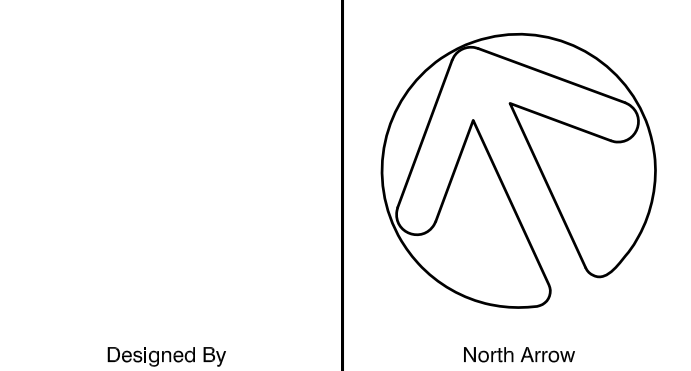
Legend

--- APPROXIMATE LIMIT OF WORK



No	Date	Revisions	By

This drawing, as an instrument of service, is provided by, and is the property of, the mbtw group. The contractor shall check and verify all dimensions and report all errors and omissions to the Landscape Architect whose seal is affixed to this drawing before proceeding with work. This drawing is not to be scaled.



Designed By
the mbtw group
 Landscape Architecture | Urban Design | Design Planning | Construction | Post-Occupancy | Urban Design
 255 Westwood Ave., Unit 111 Toronto, Ontario, Canada M6J 1S8
 T: (416) 461-7767 F: (416) 461-1851 I: www.mbtw.com

RICHARD FINDLAY
 LANDSCAPE ARCHITECT INC.

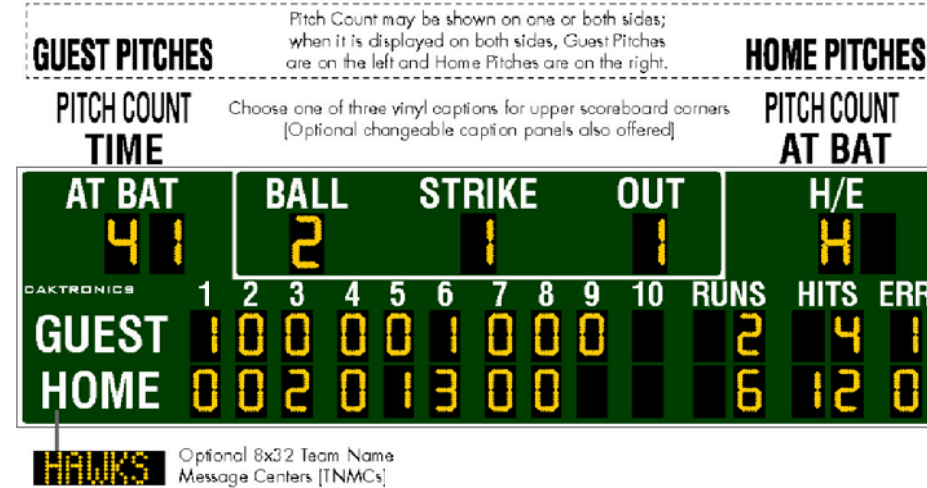
Project Name:
**Baseball Diamond
 Thunderbird Park**
 Municipality: University of British Columbia

Sheet Title:
SITE PLAN

Designed: JDJ	Drawn: OL	Scale: 1:300	Drawing No.:
Date of Drawing: September 2017	Job No.:	UPT 004	L-1

K:\Drawings\2017\11\UPT004_UBC-Baseball\04-21-2017_2D_Submission\UPT004_Baseball_L-1_Landscape_Plan.dwg Sep 27, 2017 - 11:53am

DAKTRONICS BA-2125 PRODUCT SPECIFICATIONS



This outdoor LED baseball/softball scoreboard displays HOME and GUEST team scores for up to 10 innings, total RUNS and HITS to 99 and ERR (errors) to nine for each team, AT BAT to 99, BALL to three, STRIKE to two, OUT to two and H/E (hit or error) with field position number for the error. Scoreboard can show TIME or PITCH COUNT instead of AT BAT, as well as AT BAT or PITCH COUNT in place of H/E. Scoreboard shown with optional striping and amber PanelView® digits.

DIMENSIONS	# OF SECTIONS
7'-0" H x 25'-0" W x 8" D (2.13 m, 7.62 m, 203 mm)	Two Total
9'-0" H x 25'-0" W x 8" D (9.14 m, 7.62 m, 203 mm)	One Top
4'-0" H x 25'-0" W x 8" D (1.22 m, 7.62 m, 203 mm)	One Bottom

	VINYL CAPTIONS (STANDARD)	TNMCs & VINYL CAPTIONS
POWER (120 VAC)*	Red/Amber Digits: 355 Watts, 3 Amps White Digits: 770 Watts, 6.4 Amps	625 Watts, 5.2 Amps 1040 Watts, 8.7 Amps
UNCRATED WEIGHT	Top Section: 375 lb (170 kg) Bottom Section: 500 lb (227 kg) Total: 875 lb (397 kg)	375 lb (170 kg) 580 lb (263 kg) Total: 955 lb (433 kg)

*Scoreboard requires a dedicated circuit. Models with 240 VAC power at half the indicated amperage are also offered (International Use Only).

DIGITS

- AT BAT, BALL, STRIKE, OUT and H/E digits are 18" (457 mm) high. All other digits are 15" (381 mm) high.
- Select red, amber, or white LED digits. Scoreboard may instead have mixed LED digit colors (see DD1965467).
- Scoreboard features robust weather-sealed digits (see DD2495644).
- Digits may be dimmed for night viewing.

DISPLAY COLOR

Choose from 150+ colors (from Martin Senour® paint book) at no additional cost.

CONSTRUCTION

Alcoa aluminum alloy 5052 for excellent corrosion resistance.

CAPTIONS

- HOME and GUEST captions are 12" (305 mm) high. AT BAT, BALL, STRIKE, OUT and H/E captions are 10" (254 mm) high. All other captions are 8" (203 mm) high.
- Standard captions are vinyl, applied to the display face.
- Optional TNMCs are 10.6" (269 mm) high.

OPERATING TEMPERATURES

- Display: -22° to 122° Fahrenheit (-30° to 50° Celsius)
- Console: 32° to 130° Fahrenheit (0° to 54° Celsius)

PRODUCT SAFETY APPROVAL

ETL-listed to UL 48, tested to CSA standards, and CE-labeled.

WWW.DAKTRONICS.COM E-MAIL: SALES@DAKTRONICS.COM

201 Daktronics Drive, PO Box 5178, Brookings, SD 57006
Phone: 1-800-325-8765 or 605-692-0200 Fax: 605-697-4745
020294524 070517 Page 1 of 6



DAKTRONICS BA-2125 PRODUCT SPECIFICATIONS

CONTROL CONSOLE

All Sport® 5000
(see SL03921)

TIME CLOCK

The two-digit clock can display hours/minutes/seconds. Clock information shifts from hours to minutes to seconds as time counts down.

MOUNTING

Scoreboard is typically mounted on two or three vertical beams that require specific spacing. Hardware to mount scoreboard on two beams is included; hardware for more beams is at additional cost. Standard mounting uses I-beam clamps. Optional mounting method using angle brackets is also offered; maximum beam width is 12" (305 mm) and maximum beam depth is 2 1/2" (63.5 mm). Refer to attached drawings for more information on mounting methods. For mounting to horizontal beams, contact your Daktronics representative for more information.

SERVICE ACCESS

Digit panels and electronics are serviced from either the front or rear of the scoreboard.

GENERAL INFORMATION

Scoreboard provides scoring capabilities for two teams. 100% solid state electronics are housed in an all aluminum cabinet. Scoreboard is shipped in two sections. Scoreboard power is to be provided on a dedicated circuit to prevent loss of game information due to failure of another component on the circuit. Specifications and pricing are subject to change without notice.

ADVERTISING/IDENTIFICATION PANELS

Backlit & Non-Backlit:

- 1'-6" H x 25'-0" W (457 mm, 7.62 m)
- 2'-0" H x 25'-0" W (610 mm, 7.62 m)
- 2'-6" H x 25'-0" W (762 mm, 7.62 m)
- 3'-0" H x 25'-0" W (914 mm, 7.62 m)
- 4'-0" H x 25'-0" W (1.22 m, 7.62 m)

For additional non-backlit panel sizes, see SL03761.

FOR ADDITIONAL INFORMATION

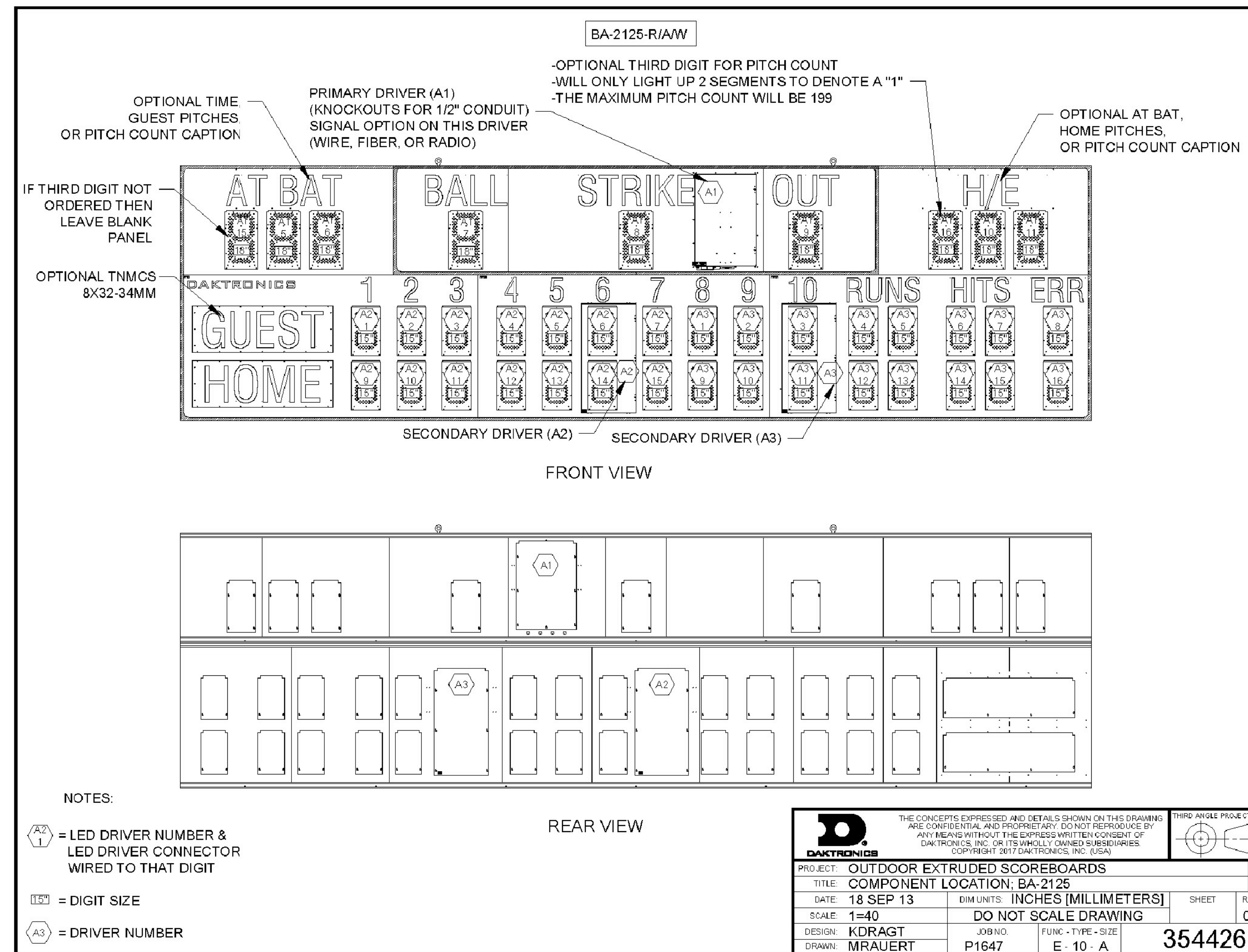
- Installation Specifications: DWG-1183308 (attached)
- Standard I-beam Mounting: DWG-1052565 (attached)
- Optional Pole Mounting: DWG-1048184 (attached)
- Component Locations: DWG-3544268 (attached)
- Architectural Specifications: See DD2587726

WWW.DAKTRONICS.COM E-MAIL: SALES@DAKTRONICS.COM

All Sport® and PanelView® are trademarks of Daktronics, Inc. Martin Senour® is a registered trademark of its owner. 020294524 070517 Page 2 of 6 Copyright © 2011-2017 Daktronics, Inc.



SCOREBOARD SPECIFICATIONS



Kit # - DWG-03644268

Version - 00.2

Description - N A COMPONENT LOCATION: BA-2125

Lifecycle State - Full Production

Last Modified By - mrauert

Last Modified - 2017-02-08

SCOREBOARD DETAILS



PRECEDENT IMAGE #4: SCOREBOARD INSTALLATION



UBC PROPERTIES TRUST

No	Date	Revisions	By

This drawing, as an instrument of service, is provided by, and is the property of, the MBTW Group. The contractor shall check and verify all dimensions and report all errors and omissions to the Landscape Architect whose seal is affixed to this drawing before proceeding with the work. This drawing is not to be scaled.

Designed By: North Arrow

the mbtw group
landscape architects urban design design partners architects golf course leisure design
255 Westland Ave., Unit 14 Toronto, Ontario, Canada M6L 1S8
T: (416) 461-7767 F: (416) 461-1851 www.mbtw.com

RICHARD FINDLAY
LANDSCAPE ARCHITECT INC.

Project Name:

Baseball Diamond
Thunderbird Park

Municipality: University of British Columbia

Sheet Title:

SITE PLAN ELEMENTS

Designed: JDJ	Drawn: OL	Scale: N/A	Drawing No.: L-3
Date of Drawing: September 2017	Job No.: UPT 004		

Project - UBC Baseball Stadium

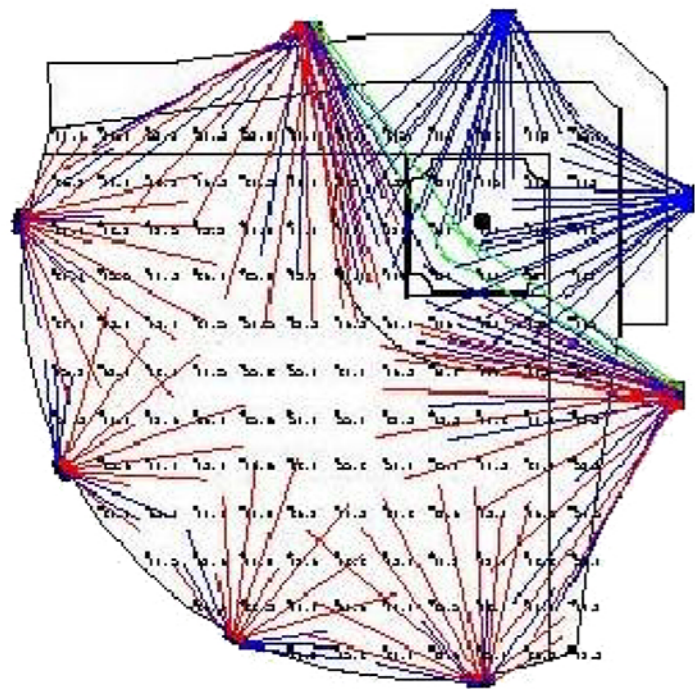
Drawn - LS
 Date - 20170726
 Drawing No. CNJ 118 UBC r2

20/20/20
 Poles 30m outfield 90 - spill 100m and 200m
 LLF = 0.95

Symbol	Qty	Label	LLF
□	86	All Field 750 NEMA 5	0.950
□	4	All Field 750 NEMA 3	0.950
□	70	All Field 750 NEMA 2	0.950

Aiming Summary

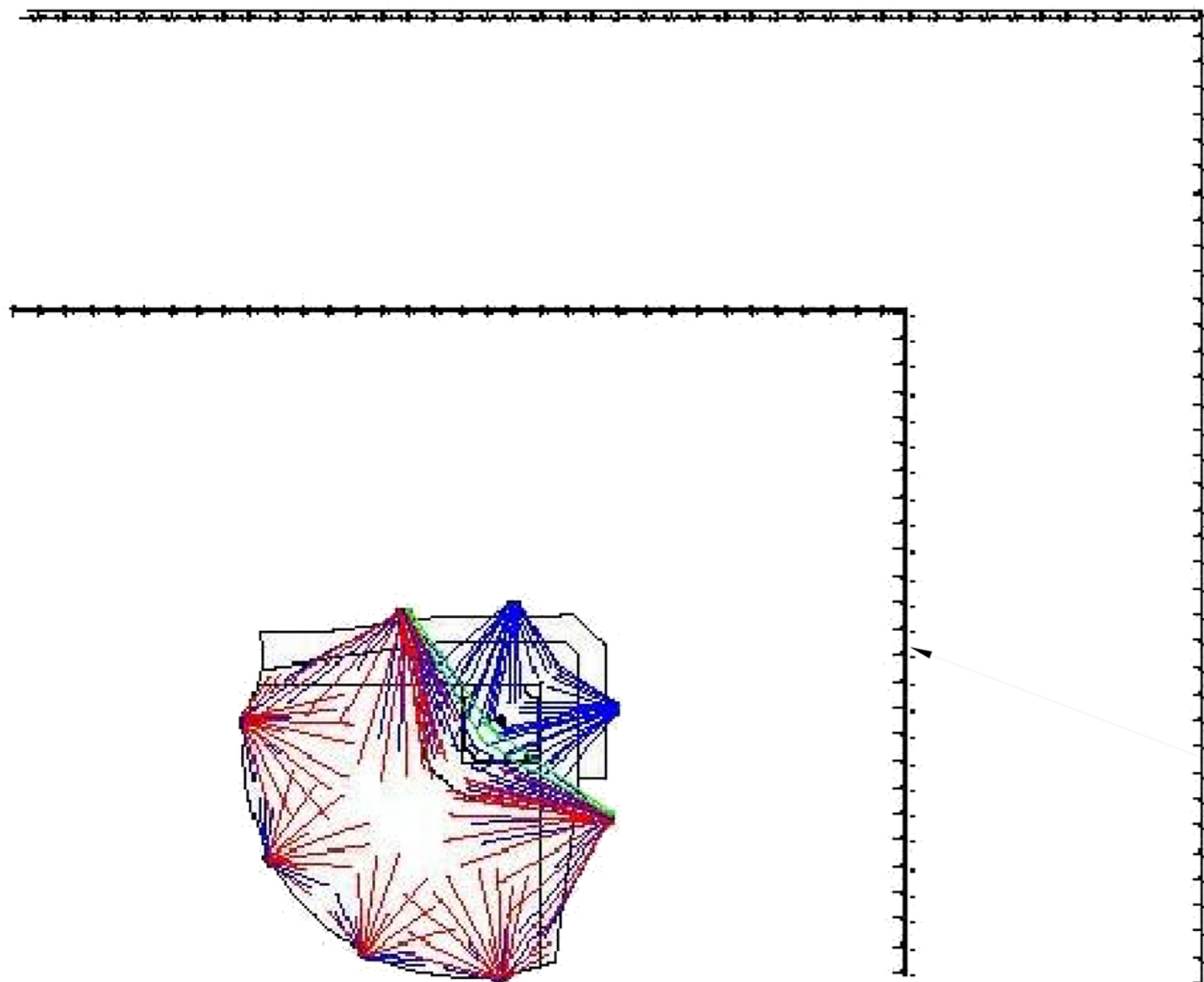
Label	CalcType	Units	Avg	Max	Min	Avg/Min	Max/Min
01 Horizontal Infield	Illuminance	Fc	111.52	132	91.8	1.21	1.44
01 Horizontal Outfield	Illuminance	Fc	71.93	93.1	52.0	1.38	1.79
02 High Home Infield	Illuminance	Fc	103.74	134	61.1	1.70	2.19
02 High Home Outfield	Illuminance	Fc	50.80	119	24.4	2.08	4.87
03 Low First Infield	Illuminance	Fc	71.90	145	32.1	2.24	4.52
03 Low First Outfield	Illuminance	Fc	42.02	100	18.7	2.25	5.35
04 Low Third Infield	Illuminance	Fc	72.98	145	32.1	2.27	4.52
04 Low Third Outfield	Illuminance	Fc	42.02	100	18.7	2.25	5.35



HORIZONTAL ILLUMINATION SUMMARY
 AIMING SUMMARY

Vertical Third base Dugout Calculations

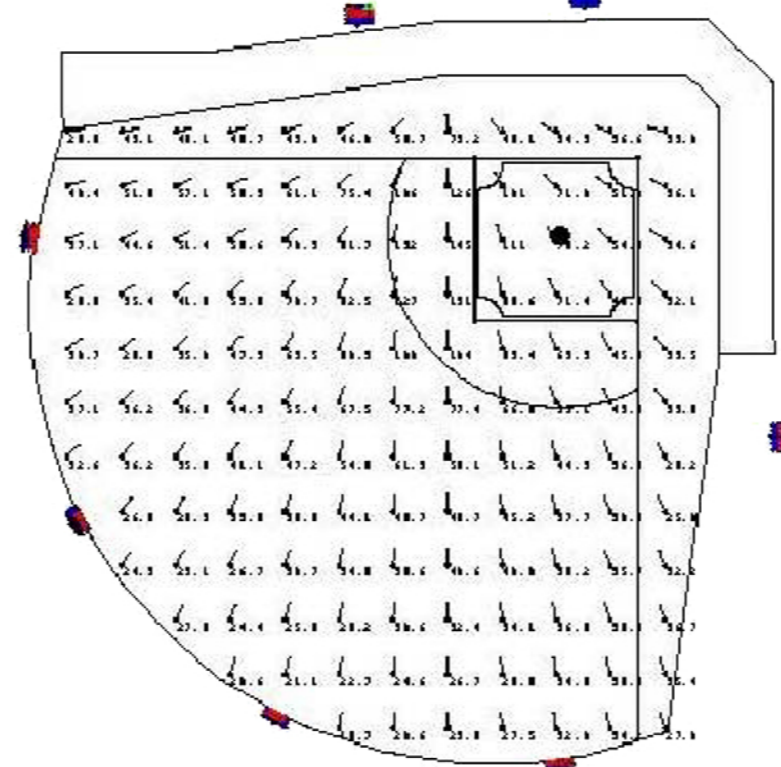
Label	CalcType	Units	Avg	Max	Min	Avg/Min	Max/Min
05 Horizontal Spill 100m	Illuminance	Fc	0.05	0.1	0.0	N.A.	N.A.
05 Vertical Spill 100m	Illuminance	Fc	0.29	0.4	0.1	2.90	4.00
06 Horizontal Spill 200m	Illuminance	Fc	0.00	0.0	0.0	N.A.	N.A.
06 Vertical Spill 200m	Illuminance	Fc	0.07	0.1	0.0	N.A.	N.A.



SPILL CALCULATION - 100m AND 200m FROM DUG-OUTS

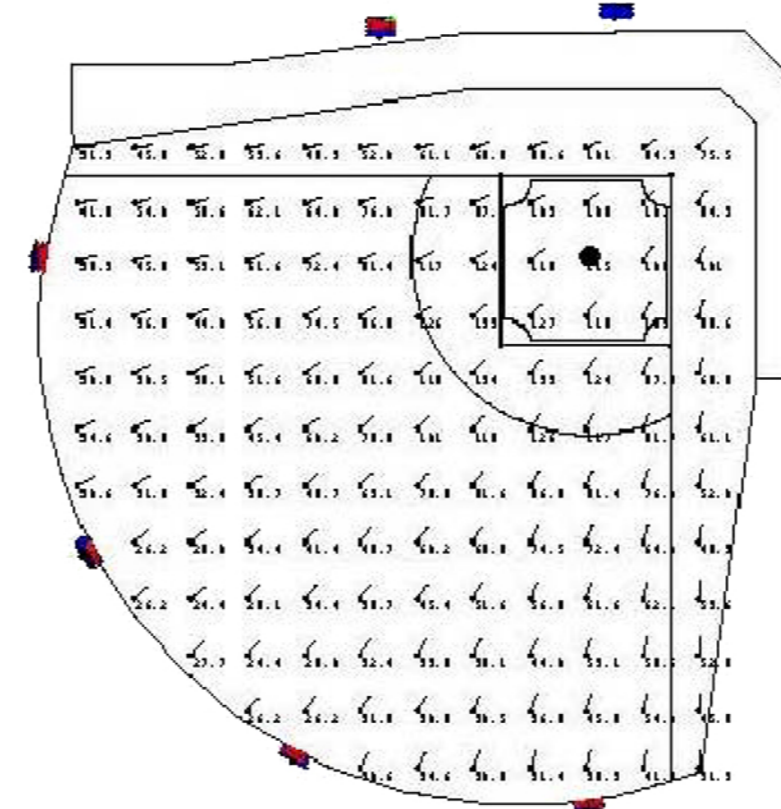
Vertical First base Dugout Calculations

Label	CalcType	Units	Avg	Max	Min	Avg/Min	Max/Min
03 Low First Infield	Illuminance	Fc	71.90	145	32.1	2.24	4.52
03 Low First Outfield	Illuminance	Fc	42.02	100	18.7	2.25	5.35



VERTICAL CALCULATION - FIRST BASE DUG-OUT

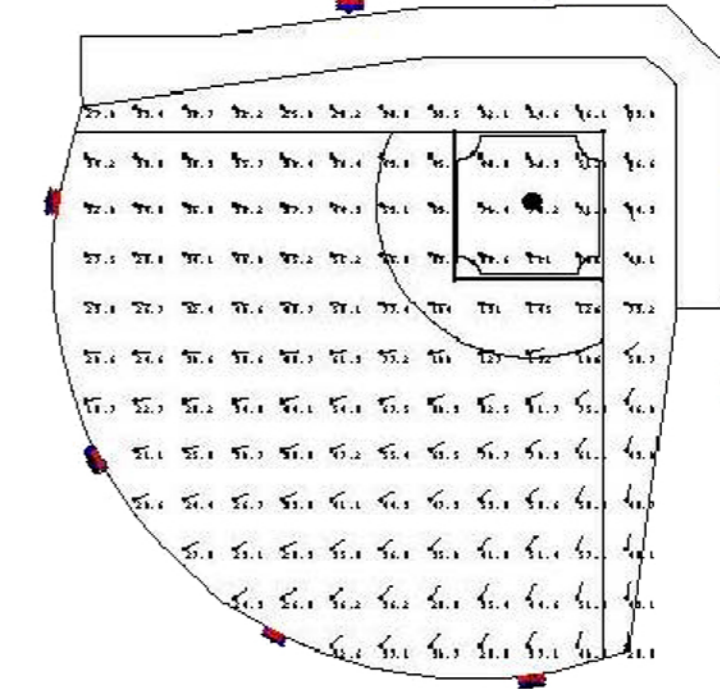
Label	CalcType	Units	Avg	Max	Min	Avg/Min	Max/Min
02 High Home Infield	Illuminance	Fc	103.74	134	61.1	1.70	2.19
02 High Home Outfield	Illuminance	Fc	50.80	119	24.4	2.08	4.87



VERTICAL CALCULATION - HOME PLATE

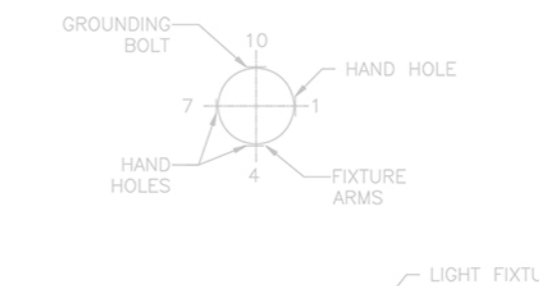
Vertical Third base Dugout Calculations

Label	CalcType	Units	Avg	Max	Min	Avg/Min	Max/Min
04 Low Third Infield	Illuminance	Fc	72.98	145	32.1	2.27	4.52
04 Low Third Outfield	Illuminance	Fc	42.02	100	18.7	2.25	5.35



VERTICAL CALCULATION - THIRD BASE DUG-OUT

Vertical High Home Calculations

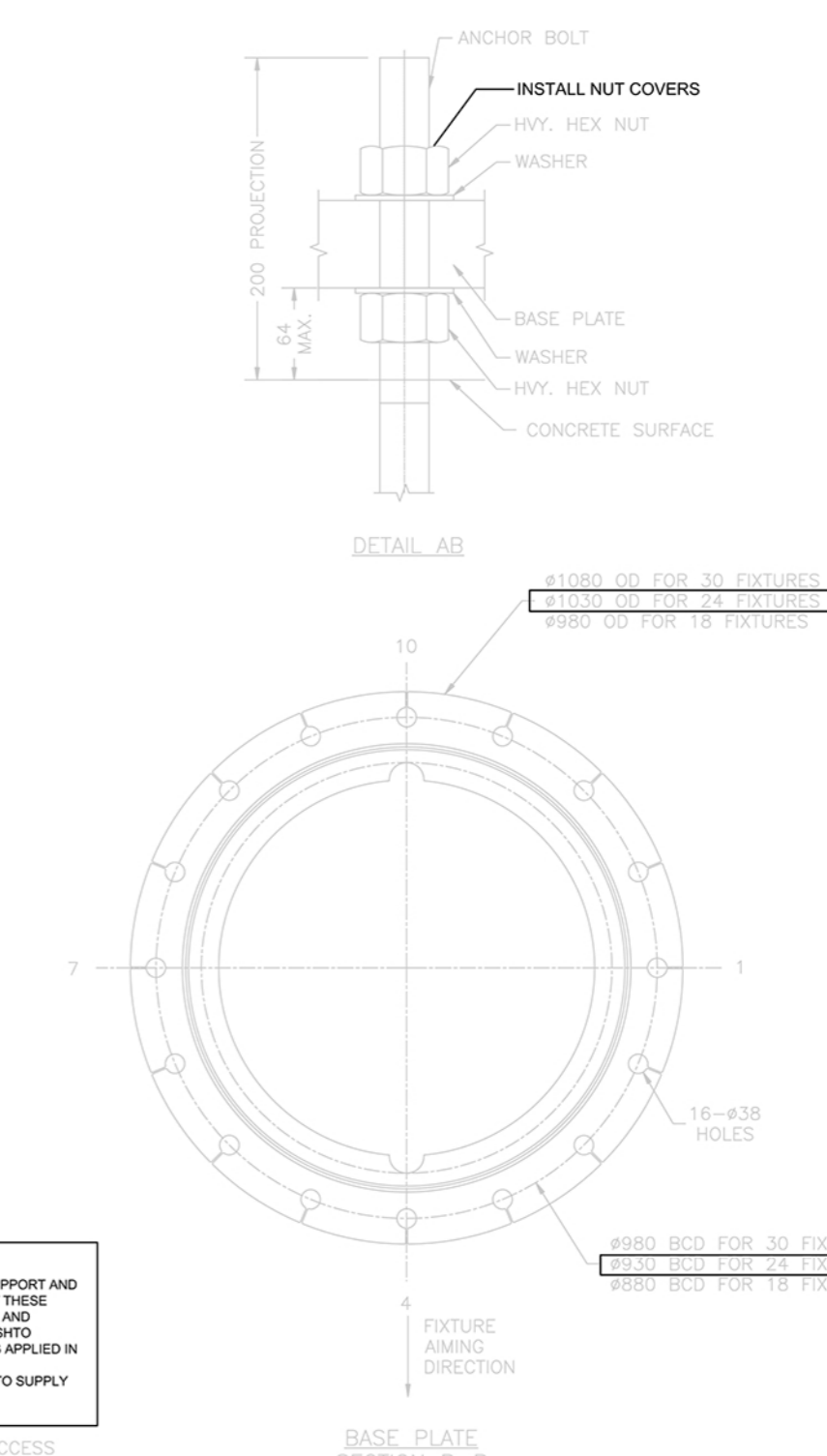
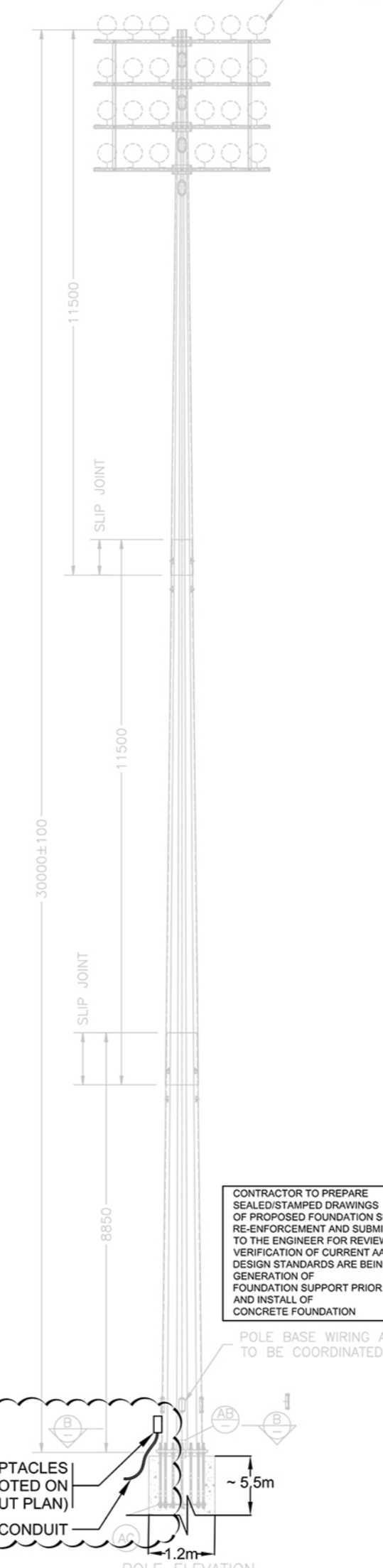


GENERAL NOTES:
 MATERIAL: ALL STEEL SILICON CONTENT - SHAFT <math>Si < 0.04\%</math>
 PARTS <math>Si < 0.04\%</math> OR <math>0.15\% < Si < 0.22\%</math>
 WELDING: CSA W59, W47.1
 FINISH: GALVANNEK ASTM A123
 - ALL UNITS METRIC (mm, kg) UNLESS OTHERWISE STATED
 - STAMP BASE PLATE "NP YY" (YY=YEAR)

DESIGN:
 POLE IS DESIGNED ACCORDING TO AASHTO 2013 STD. FOR 160 km/hr WIND SPEED WITH RESPECT TO THE FOLLOWING LOADING SCENARIOS:

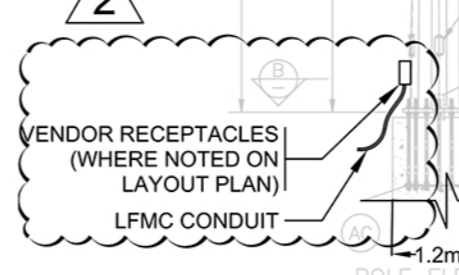
MAX. NUMBER OF FIXTURES	AVALANCH	SHEAR(M)	BENDING MOMENT(M-kN)
30 FIXTURES	55.5	28.5	519
24 FIXTURES	38.5	25.7	453
18 FIXTURES	34.3	23	393.3

- ANCHOR BOLTS: #12" RODS-ASTM F1554 Gr. 55(MIN.)



CONTRACTOR TO PREPARE SEaled/STAMPED DRAWINGS OF PROPOSED FOUNDATION SUPPORT AND RE-ENFORCEMENT AND SUBMIT THESE TO THE ENGINEER FOR REVIEW AND VERIFICATION OF CURRENT AASHTO DESIGN STANDARDS ARE BEING APPLIED IN GENERATION OF FOUNDATION SUPPORT PRIOR TO SUPPLY AND INSTALL OF CONCRETE FOUNDATION

POLE BASE WIRING ACCESS TO BE COORDINATED



POLE OPTION A

NOTES:

NO	DATE	REVISIONS

SEAL

UBC PROPERTIES TRUST

SOCCER FIELD FACILITY

THUNDERBIRD PARK SPORTS FIELDS

PROJECT TITLE

ATHLETICS PRECINCT BASEBALL FIELD UPGRADE

DRAWING TITLE

SPILL LIGHTING CALCULATIONS

SCALE: 1:250

DATE: AUG 2017

BRAWN: [initials]

SHEET No.

REVISED: [initials]

BINNING: ROAD

JBC PROJECT No.

JBC DRAWING No.

E-1



1 EPHEBUS LED SPORTS LIGHTING



2 TYPICAL FIELD LIGHTING



3 AERIAL VIEW OF NIGHTTIME LIGHT CUTOFF

No	Date	Revisions	By

This drawing, as an instrument of service, is provided by, and is the property of The MBTW Group. The contractor shall check and verify all dimensions and report all errors and omissions to the Landscape Architect whose seal is affixed to this drawing before proceeding with work. This drawing is not to be scaled.

Designed By _____ North Arrow



Project Name:
**Baseball Diamond
 Thunderbird Park**
 Municipality: University of British Columbia

Sheet Title:
**SPORTS FIELD LIGHTING
 PRECEDENT IMAGES**

Designed: JDJ	Drawn: OL	Scale: N.T.S.	Drawing No.:
Date of Drawing: September 2017	Job No.:	UPT 004	E-2

K:\Projects\2017\17-09-21-2017_ZIP_Submission\UPT004_Baseball_E-2.dwg Sep 26, 2017 - 5:24pm