

THIRD SPACE COMMONS

A ‘Third Space’ on campus that serves as a collaborative work space and integrated design hub for zero emissions, regenerative, and climate resilient design activities

Project Description

A demonstration of low carbon design, Third Space Commons is a student designed and developed structure that is Third Quadrant Design’s entry to the U.S. Department of Energy’s 2023 Solar Decathlon Build Challenge. Post competition the structure will be transitioned into a “third space” for students to interact across disciplines in a space that functions in between a formal teaching space and an informal gathering space.

Third Space Commons has been designed to “establish a dedicated, accessible, and inspiring space that provides a forum for interdisciplinary interaction,” to “ensure harmony with the environment through ecologically sensitive design,” and to “elevate learning through hands-on experience”

The facility is designed to support student activities through its flexible interior arrangement and variety of spaces that allow for different activities. This includes a green space for inspiration, a commons space for creativity, and a seminar space for collaboration. The flexible wall partitions allow for the entire building to be opened up for events.

Design Policy Compliance

Third Space Commons has been designed to fit seamlessly within the UBC Vancouver’s sustainability corridor. Orientation, massing, thermally massive materials, and window placement have been carefully selected to optimize passive cooling and lighting strategies. The reflective sawtooth roof with south-facing solar panels and north-facing skylights minimize unwanted heat gains, while maximizing desirable natural daylight. The building’s air-tight, envelope results in minimal energy usage, while a rainwater collection system reduces water demand and effectively mitigates stormwater load. Third Space Commons maintains harmony with the existing buildings around it with its architectural focus on wood and light materials. The landscaping is open and welcoming, with a focus on carbon sequestration as well as easy maintenance and integration with existing site foliage.

BUILDING INFORMATION


ADDRESS:	2136 WEST MALL, VANCOUVER, BC V6T 1Z4
FLOOR AREA:	GROSS FLOOR AREA 247.1sqm/2660sqft
NUMBER OF STOREYS:	1 STOREY
BUILDING HEIGHT:	7.85 meters
APPLICABLE BUILDING CODE:	BC BUILDING CODE 2018, PART 3
OCCUPANCY CLASSIFICATION:	GROUP A, DIVISION 2

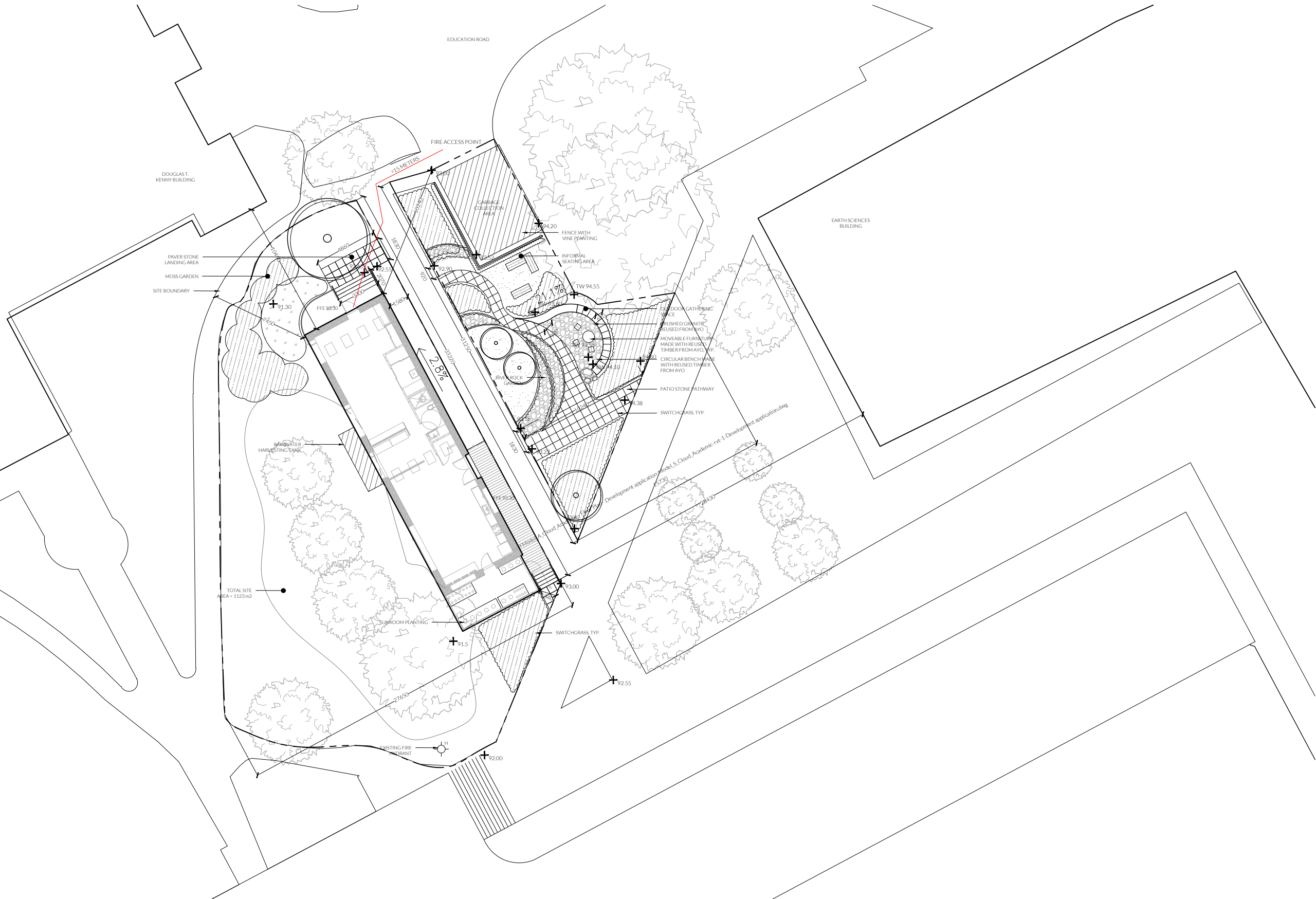


PROJECT TEAM

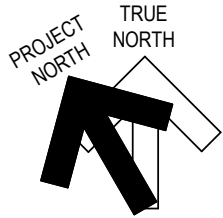




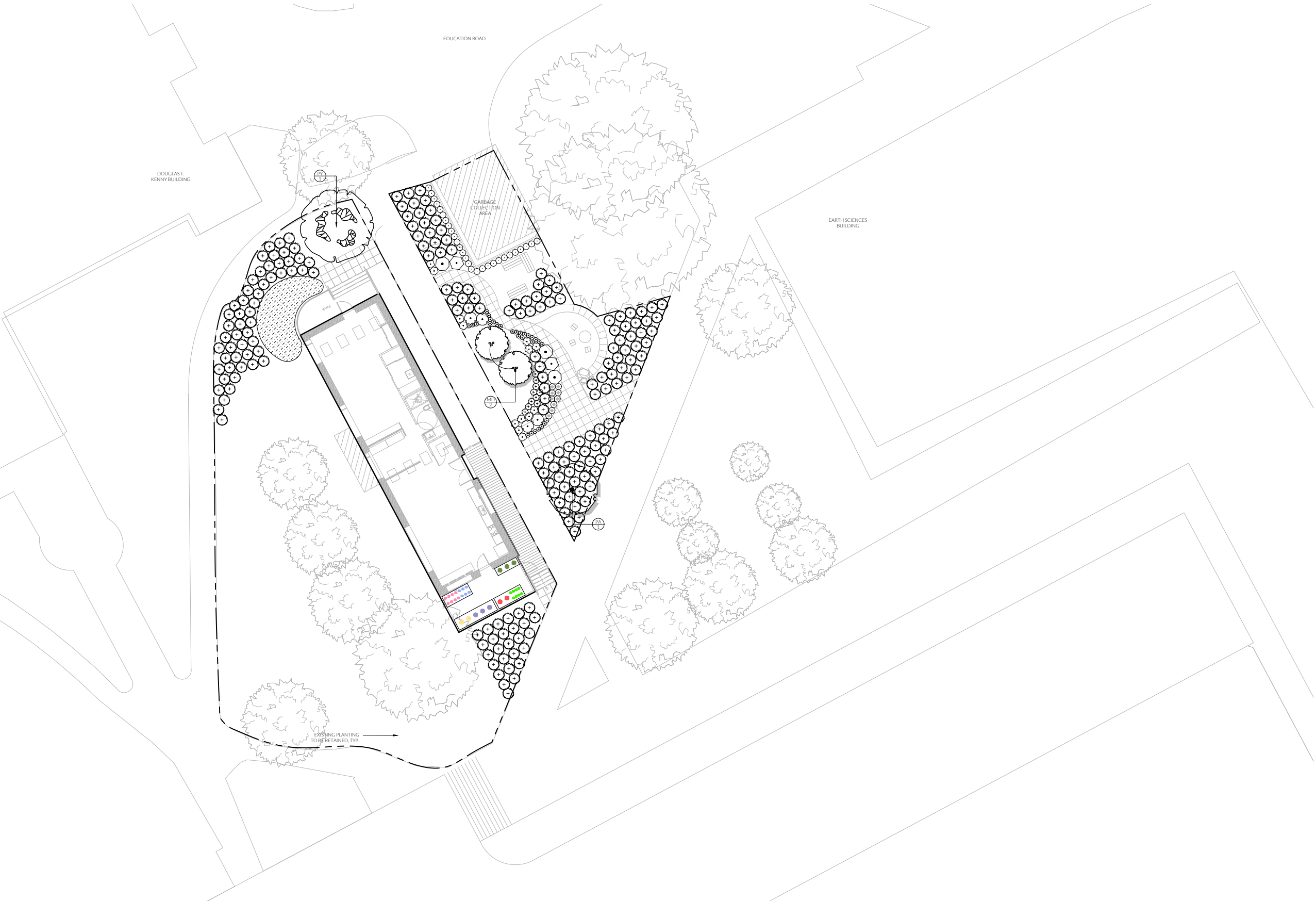
	PROJECT	THIRD SPACE COMMONS	SHEET	DP1.5	DATE	04/21/22
	TITLE	Site Photos	SCALE		REVISION	



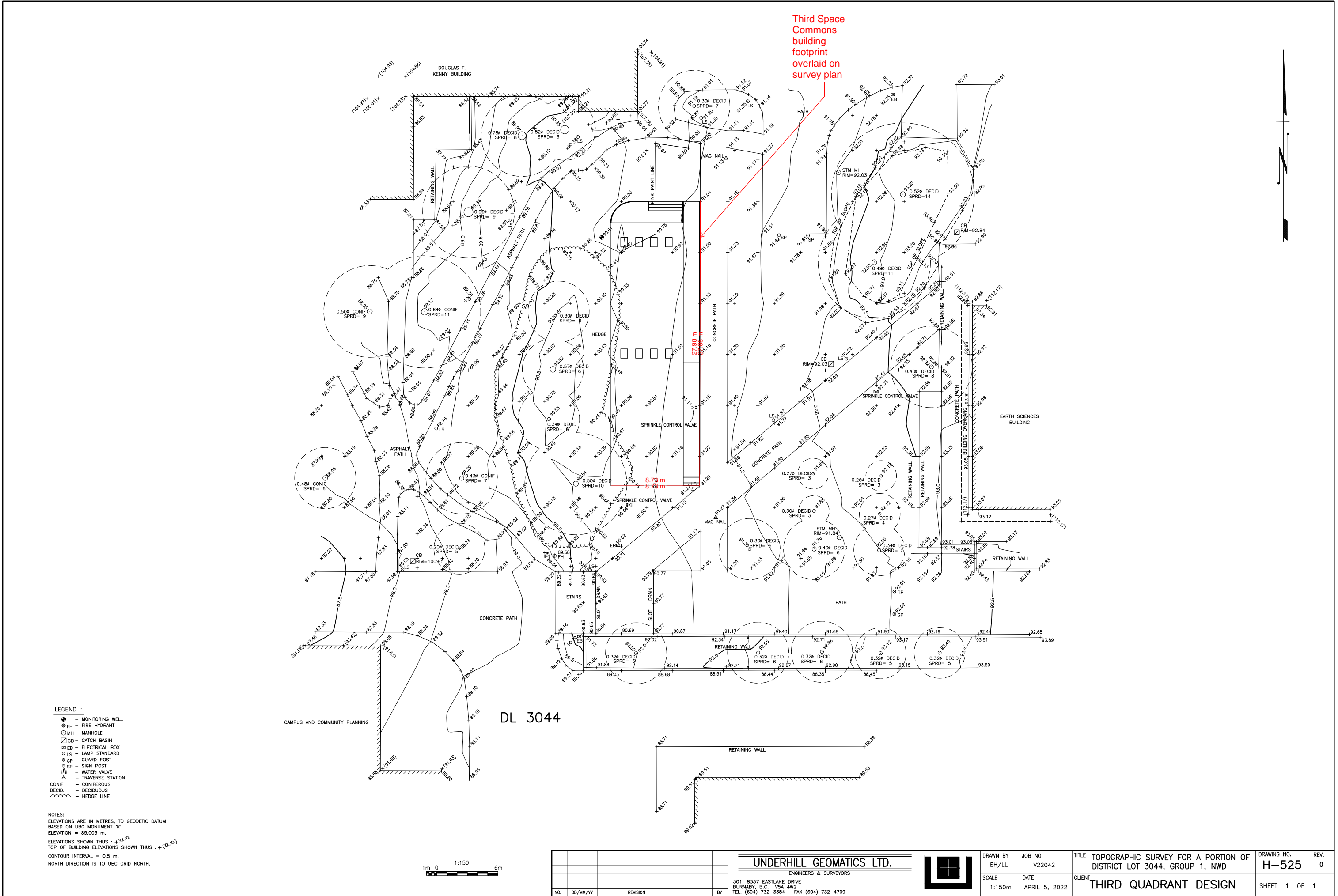
PROJECT	SHEET	DATE
THIRD SPACE COMMONS	A-002	04/20/22
TITLE	SCALE	REVISION
LANDSCAPE SITE PLAN	1:300	ISSUED FOR DP



PLANT SCHEDULE - EXTERIOR				
TREES	CODE	QTY	BOTANICAL / COMMON NAME	SPACING
	PY	1	PRUNUS x YEDOENSIS / YOSHINO CHERRY	AS SHOWN
SHRUBS	CODE	QTY	BOTANICAL / COMMON NAME	SPACING
	Pv	242	PANICUM VIRGATUM / SWITCHGRASS	36" O.C.
	Pm	2	PINUS MUGO / MUGO PINE	42" O.C.
	Sj	3	SPIRAEA JAPONICA / JAPANESE SPIRAEA	42" O.C.
	Po	4	POLYSTICHUM MUNITUM / WESTERN SWORD FERN	36" O.C.
	Fg	29	FESTUCA GLAUCA / BLUE FESCUE	12" O.C.
	Sa	9	SEDUM x AUTUMN JOY / AUTUMN JOY SEDUM	18" O.C.
	La	6	LAVANDULA ANGUSTIFOLIA / ENGLISH LAVENDER	24" O.C.
	Am	10	ACHILLEA MILLEFOLIUM / COMMON YARROW	18" O.C.
	Pt	28	PARTHENOCISSUS TRICUSPIDATA / BOSTON IVY	18" O.C.
	Tr	183 sf	TORTULA RURALIS / STAR MOSS	AS SHOWN
PLANT SCHEDULE - EXTERIOR PLANTING TRANSPLANTED FROM AYO				
TREES	CODE	QTY	BOTANICAL / COMMON NAME	SPACING
	MD	2	MALLUS DOMESTICA / APPLE	AS SHOWN
	PA	1	PRUNUS AVIUM / WILD CHERRY	AS SHOWN
SHRUBS	CODE	QTY	BOTANICAL / COMMON NAME	SPACING
	Ed	7	ERICA x DARLEYENSIS / DARLEY DALE HEATH	24" O.C.
PLANT SCHEDULE - INTERIOR				
SHRUBS	CODE	QTY	BOTANICAL / COMMON NAME	
	Pc	1	PETROSELINUM CRISPUM / DARK GREEN ITALIAN PARSLEY	
	Cs	1	CORIANDRUM SATIVUM / CALYPSO CILANTRO	
	Ms	1	MENTHA SPICATA / SPEARMINT	
	Ov	1	ORIGANUM VULGARE SSP. HIRTUM / GREEK OREGANO	
	Sr	1	SALVIA ROSMARINUS / ROSEMARY	
	Tv	1	THYMUS VULGARIS / ENGLISH THYME	
	Rs	8	RAPHANUS SATIVUS / EASTER EGG II RADISH	
	So	8	SPINACIA OLERACEA / MONSTRUEUX DE VIROFLAY SPINACH	
	Sl	2	SOLANUM LYCOPERSICUM / SUN GOLD TOMATO	
	St	3	SOLANUM TUBEROSUM / SIEGLINDE POTATO	
	Ib	2	IPOMOEA BATATAS / GEORGIA JET SWEET POTATO	
	Bo	3	BRASSICA OLERACEA VAR. ACEPHALA / VATES BLUE CURLED SCOTCH KALE	



PROJECT	THIRD SPACE COMMONS	SHEET	A-003	DATE	04/20/22
TITLE	PLANTING PLAN	SCALE	1:300	REVISION	ISSUED FOR DP



- LEGEND :
- - MONITORING WELL
 - ⊕ - FIRE HYDRANT
 - - MANHOLE
 - ▣ - CATCH BASIN
 - ⊞ - ELECTRICAL BOX
 - ⊙ - LAMP STANDARD
 - ⊙ - GUARD POST
 - ⊙ - SIGN POST
 - ⊙ - WATER VALVE
 - △ - TRAVERSE STATION
 - CONF. - CONIFEROUS
 - DECID. - DECIDUOUS
 - - HEDGE LINE

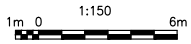
NOTES:

ELEVATIONS ARE IN METRES, TO GEODETIC DATUM
BASED ON UBC MONUMENT 'K'.
ELEVATION = 85.003 m.

ELEVATIONS SHOWN THUS : +XX.XX
TOP OF BUILDING ELEVATIONS SHOWN THUS : + (XX.XX)

CONTOUR INTERVAL = 0.5 m.

NORTH DIRECTION IS TO UBC GRID NORTH.



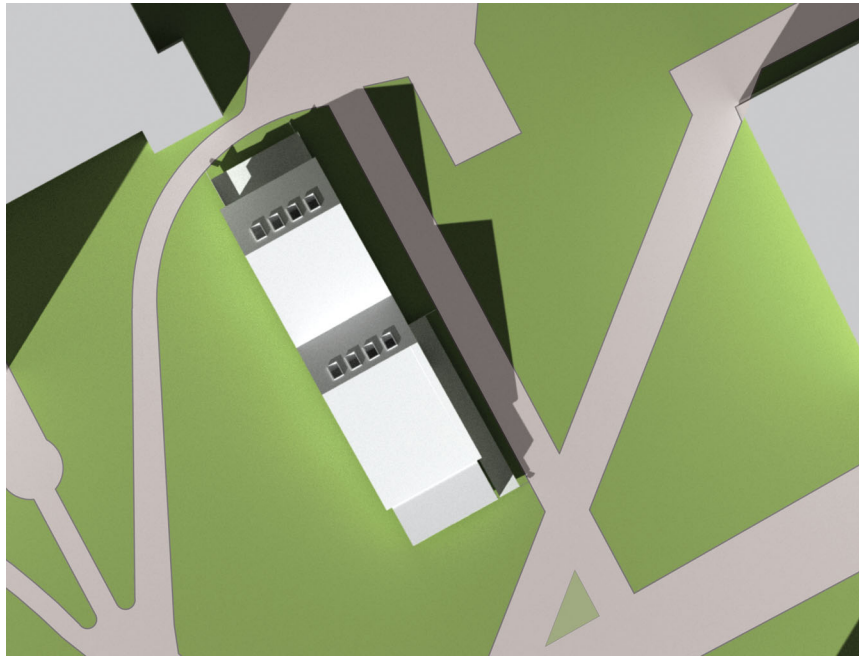
NO.	DD/MM/YY	REVISION	BY

UNDERHILL GEOMATICS LTD.
ENGINEERS & SURVEYORS

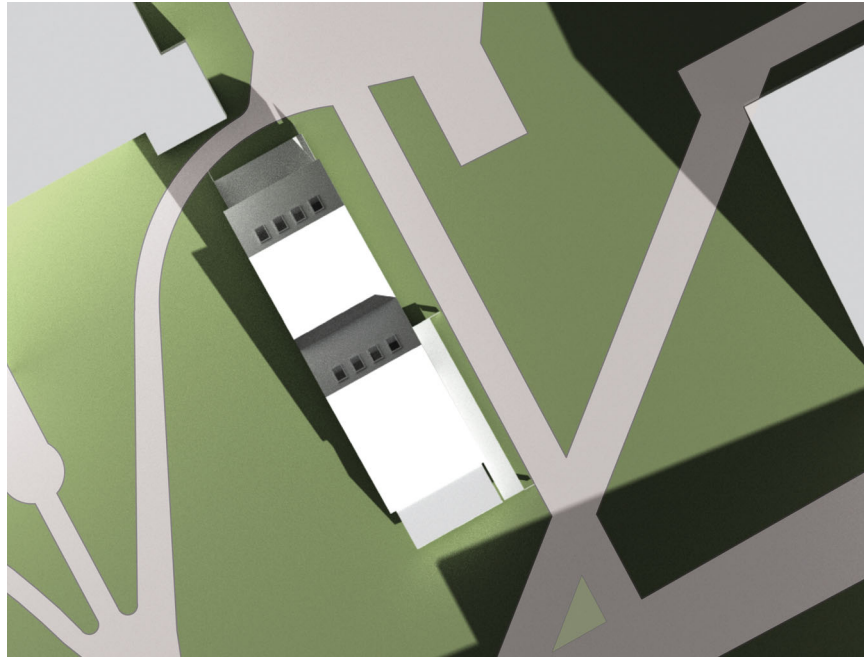
301, 8337 EASTLAKE DRIVE
BURNABY, B.C. V5A 4W2
TEL. (604) 732-3384 FAX (604) 732-4709



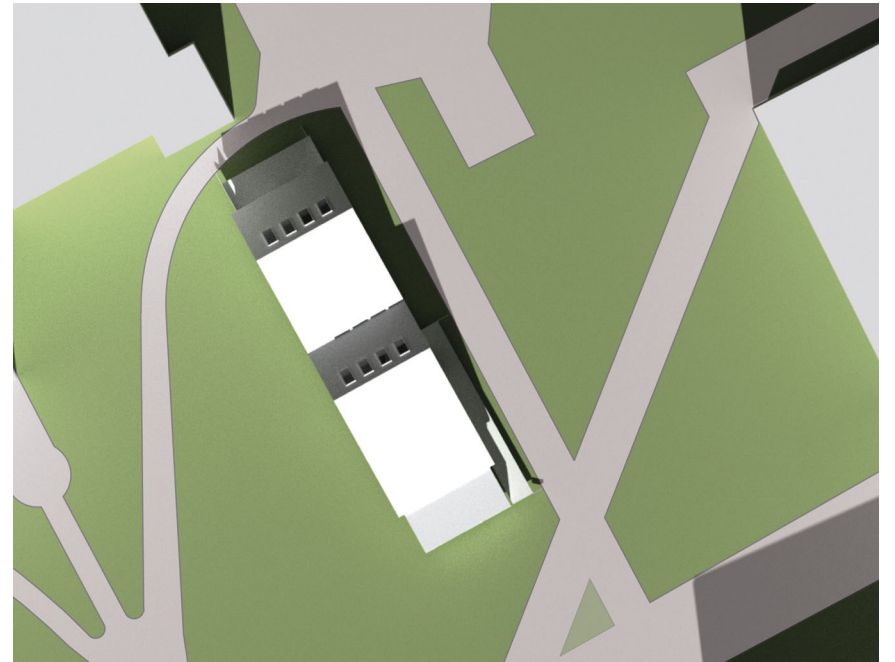
DRAWN BY EH/LL	JOB NO. V22042	TITLE TOPOGRAPHIC SURVEY FOR A PORTION OF DISTRICT LOT 3044, GROUP 1, NWD	DRAWING NO. H-525	REV. 0
SCALE 1:150m	DATE APRIL 5, 2022	CLIENT THIRD QUADRANT DESIGN	SHEET 1 OF 1	



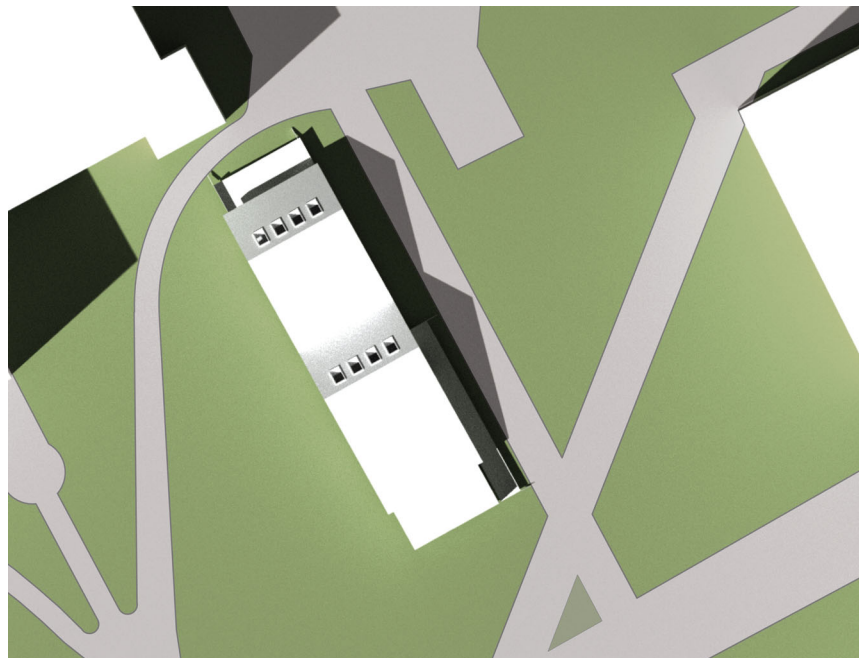
March 21 2pm



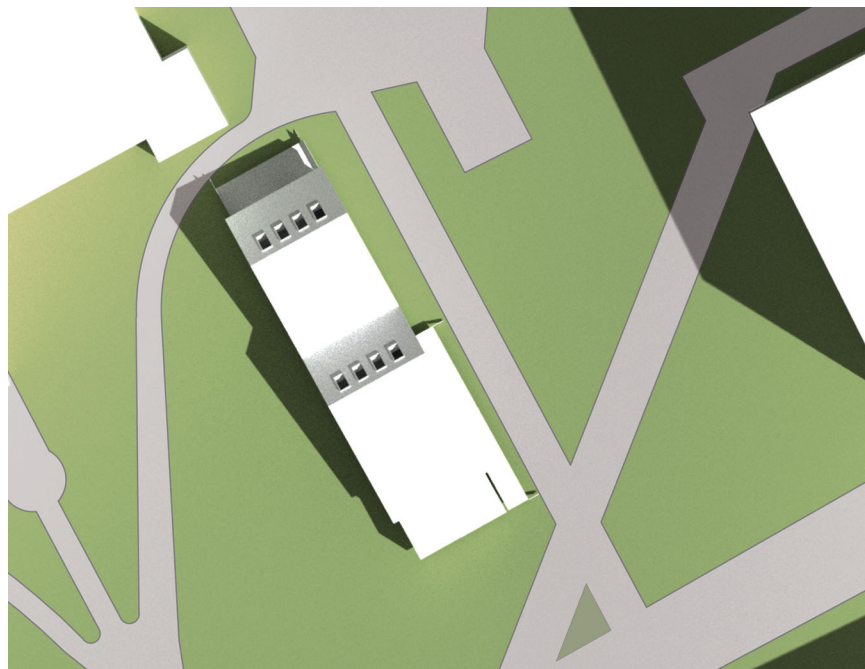
March 21 10am



March 21 12pm




June 21 2pm

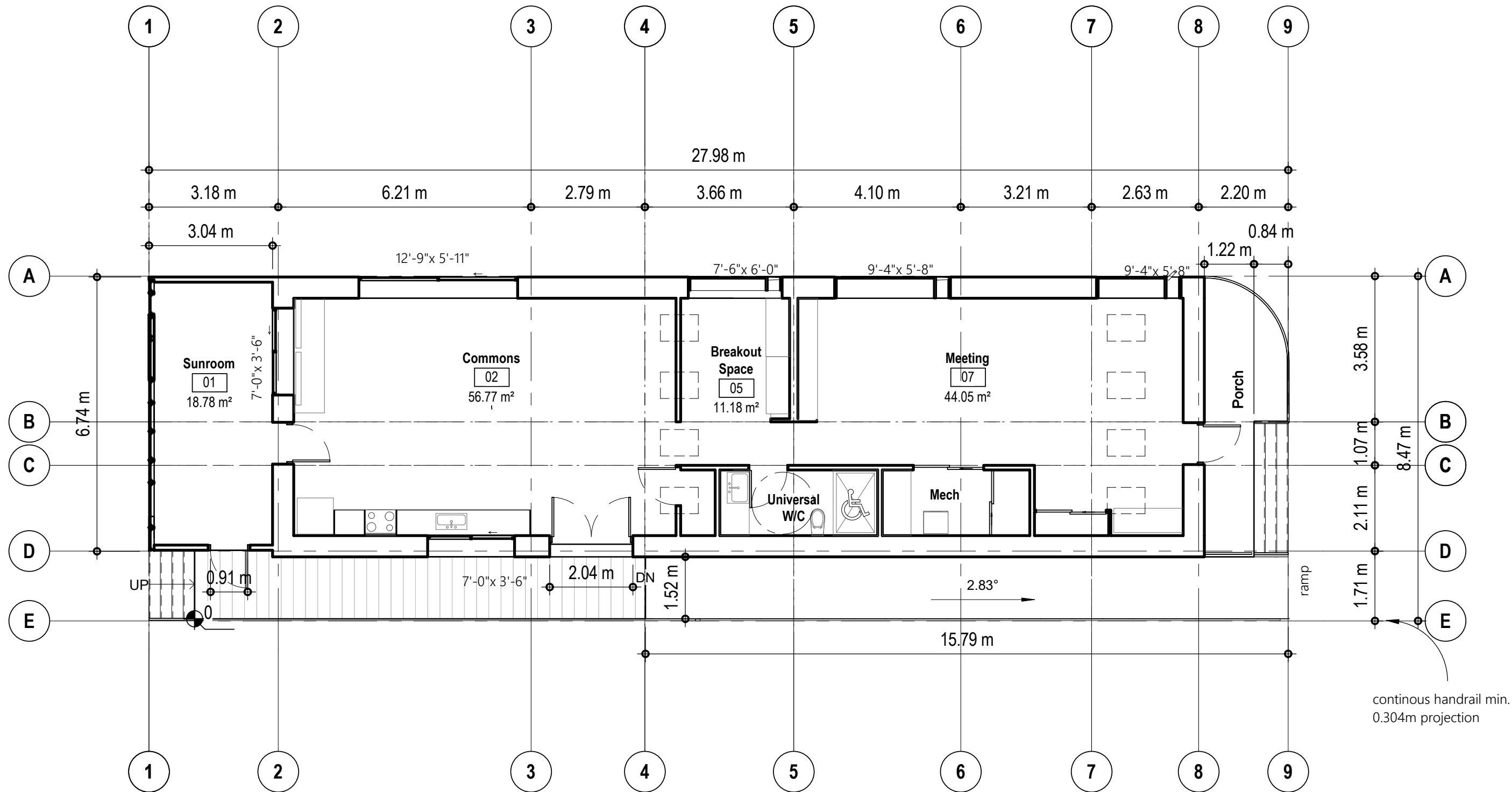
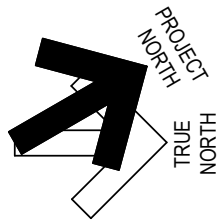


June 21 10am



June 21 12pm

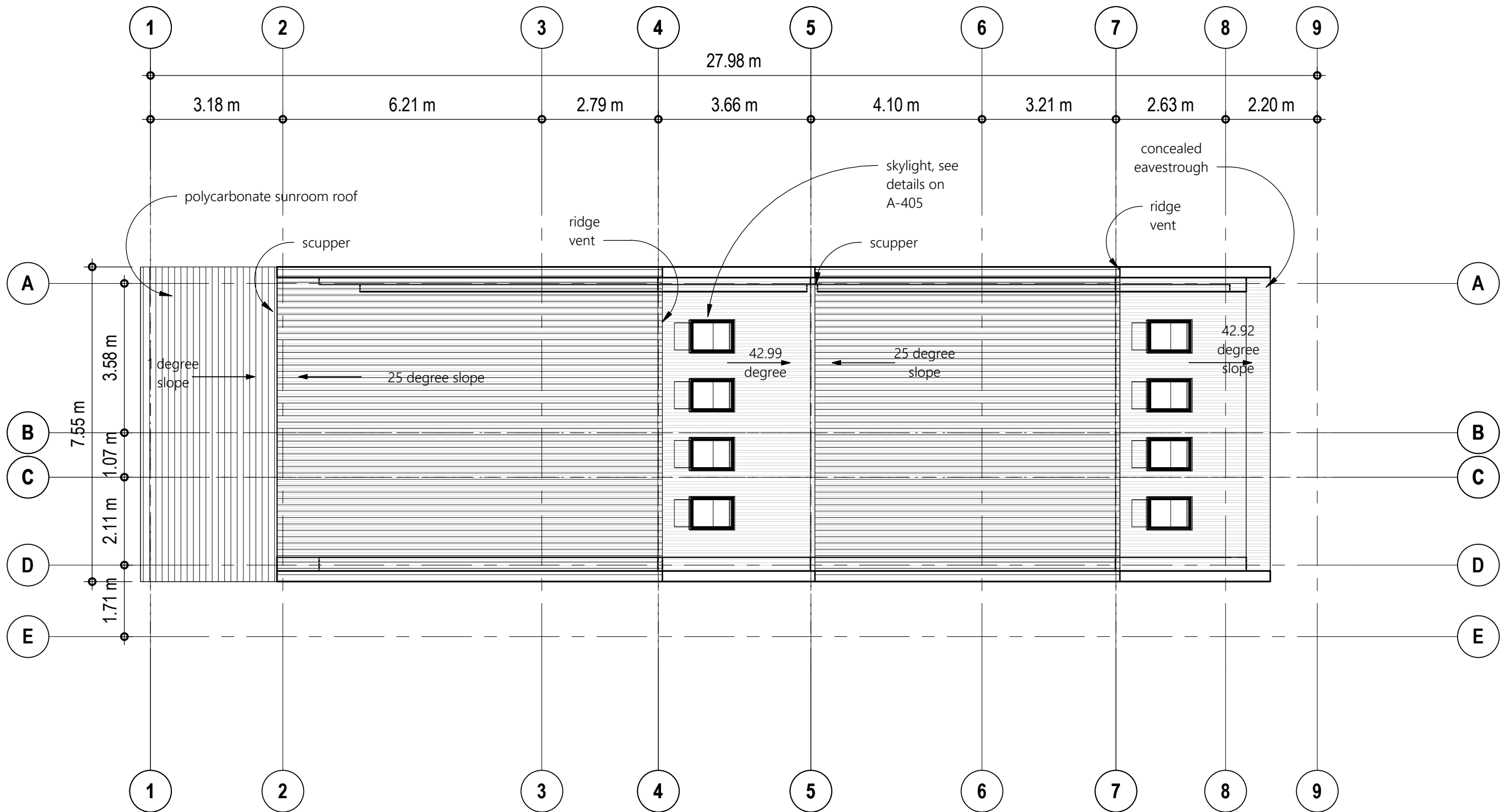
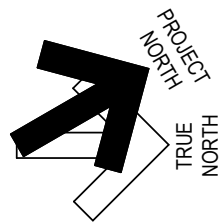
	PROJECT	THIRD SPACE COMMONS	SHEET	DP1.4	DATE	04/20/22
	TITLE	SHADOW STUDY	SCALE		REVISION	



1 Development Plan
DP2.1 SCALE: 1 : 100



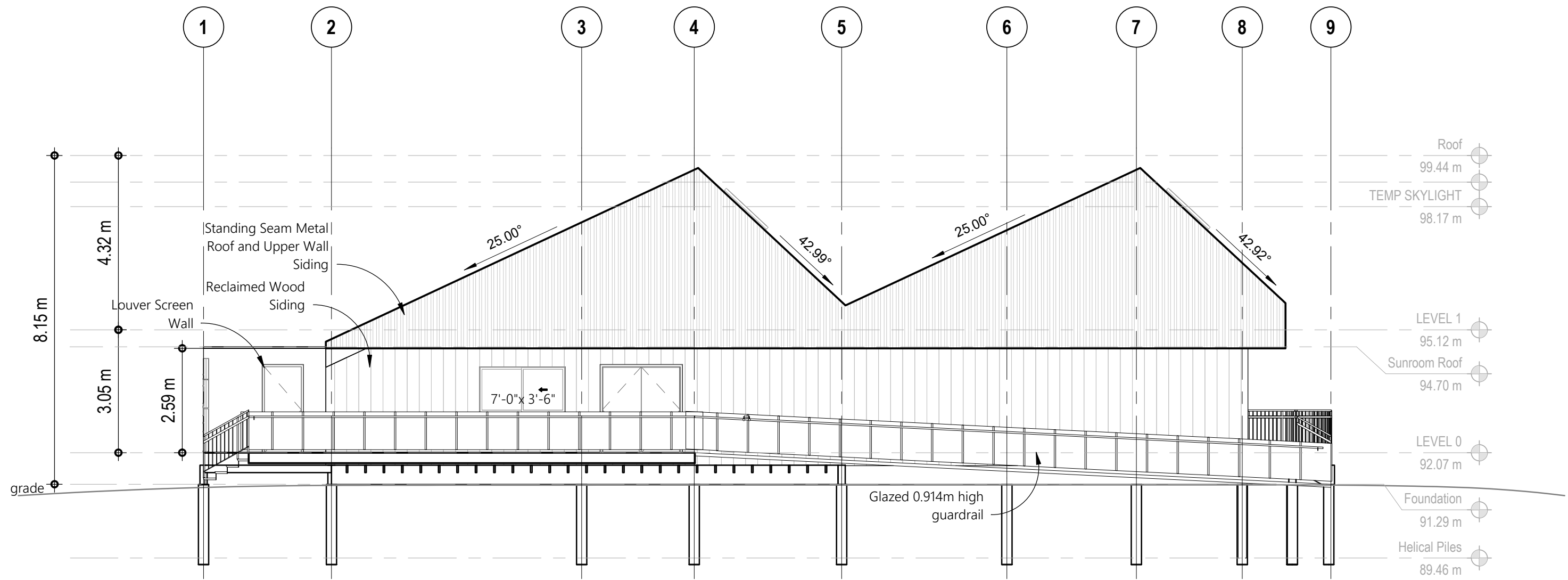
	PROJECT THIRD SPACE COMMONS	SHEET DP2.1	DATE 04/20/22
	TITLE FLOOR PLAN	SCALE 1 : 100	REVISION



1
DP2.2

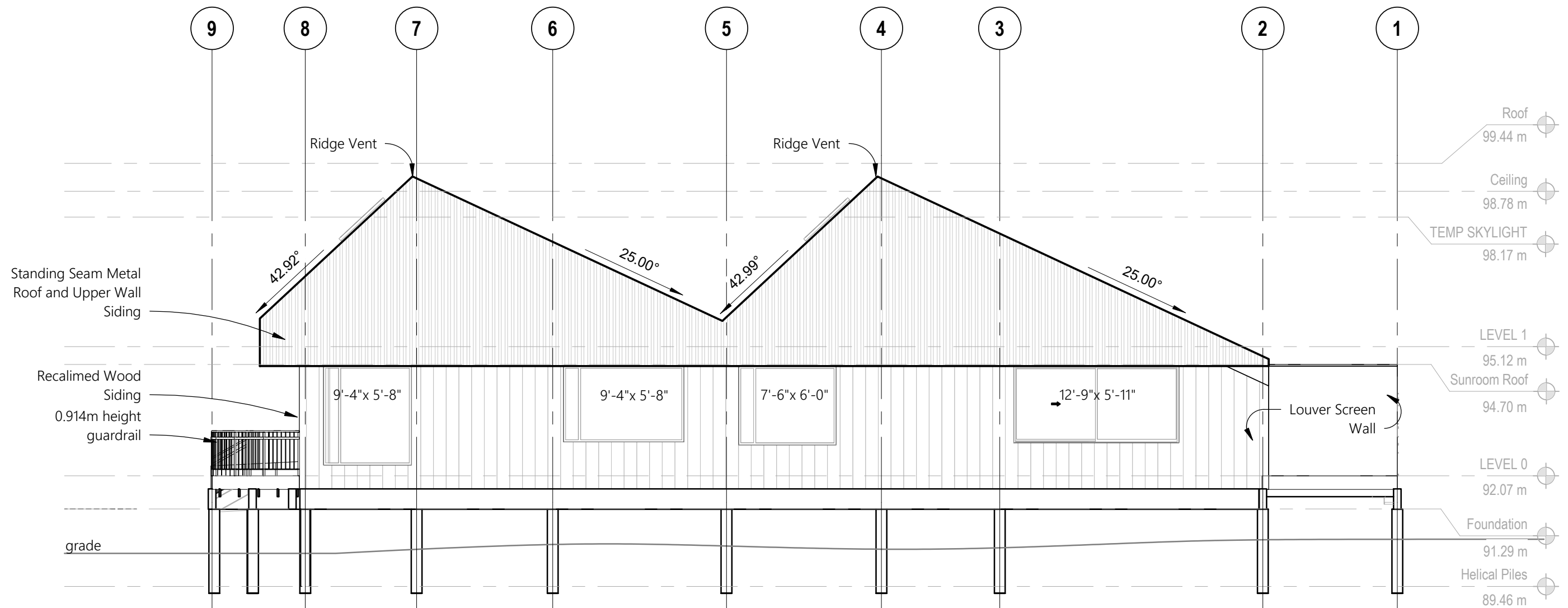
Roof

SCALE: 1 : 100




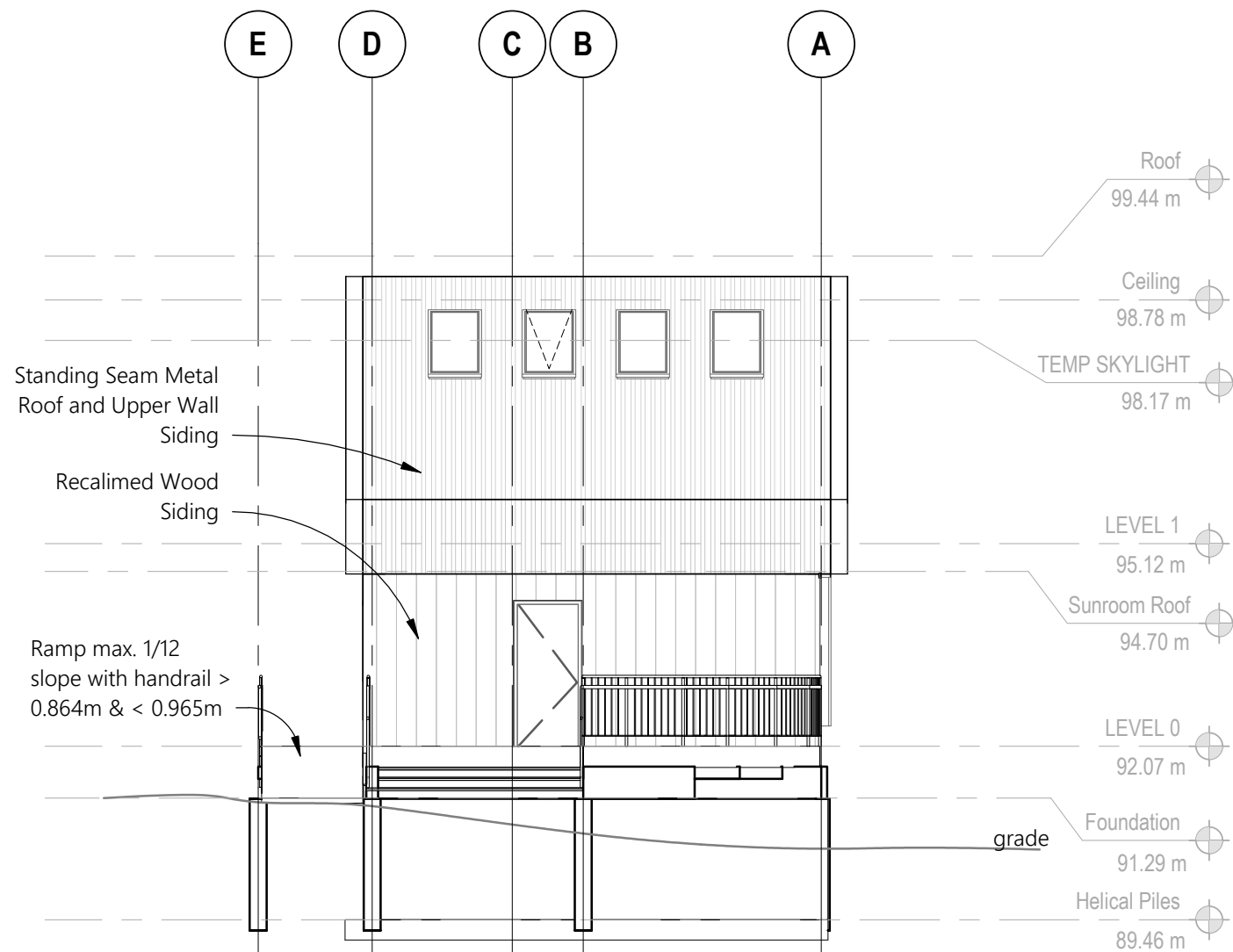
1 EAST ELEVATION
DP4.1 SCALE: 1 : 100

	PROJECT	THIRD SPACE COMMONS	SHEET	DP4.1	DATE	03/28/22
	TITLE	EAST ELEVATION	SCALE	1 : 100	REVISION	

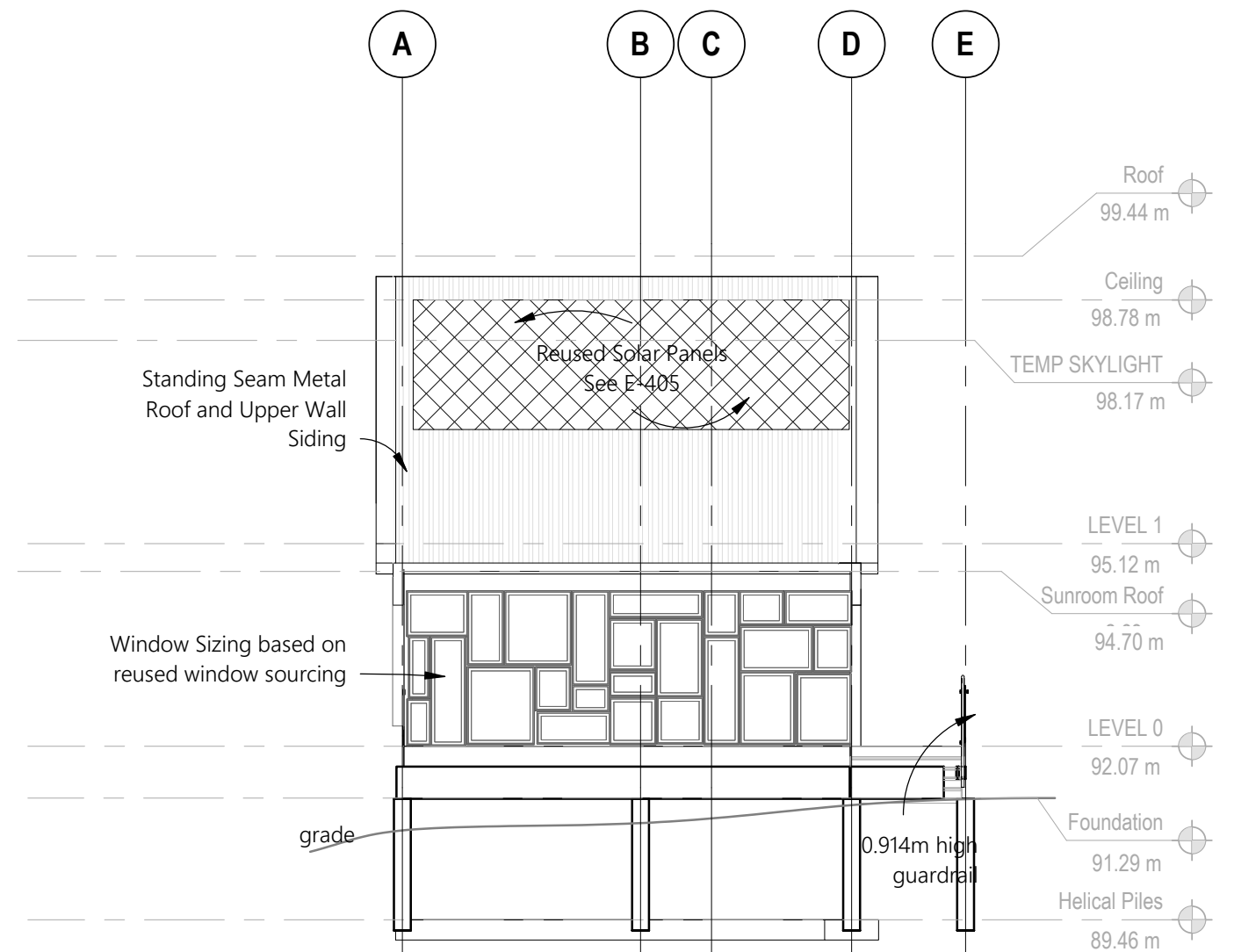


1 WEST ELEVATION
DP4.2 SCALE: 1 : 100

	PROJECT THIRD SPACE COMMONS	SHEET DP4.2	DATE 04/20/22
	TITLE WEST ELEVATION	SCALE 1 : 100	REVISION

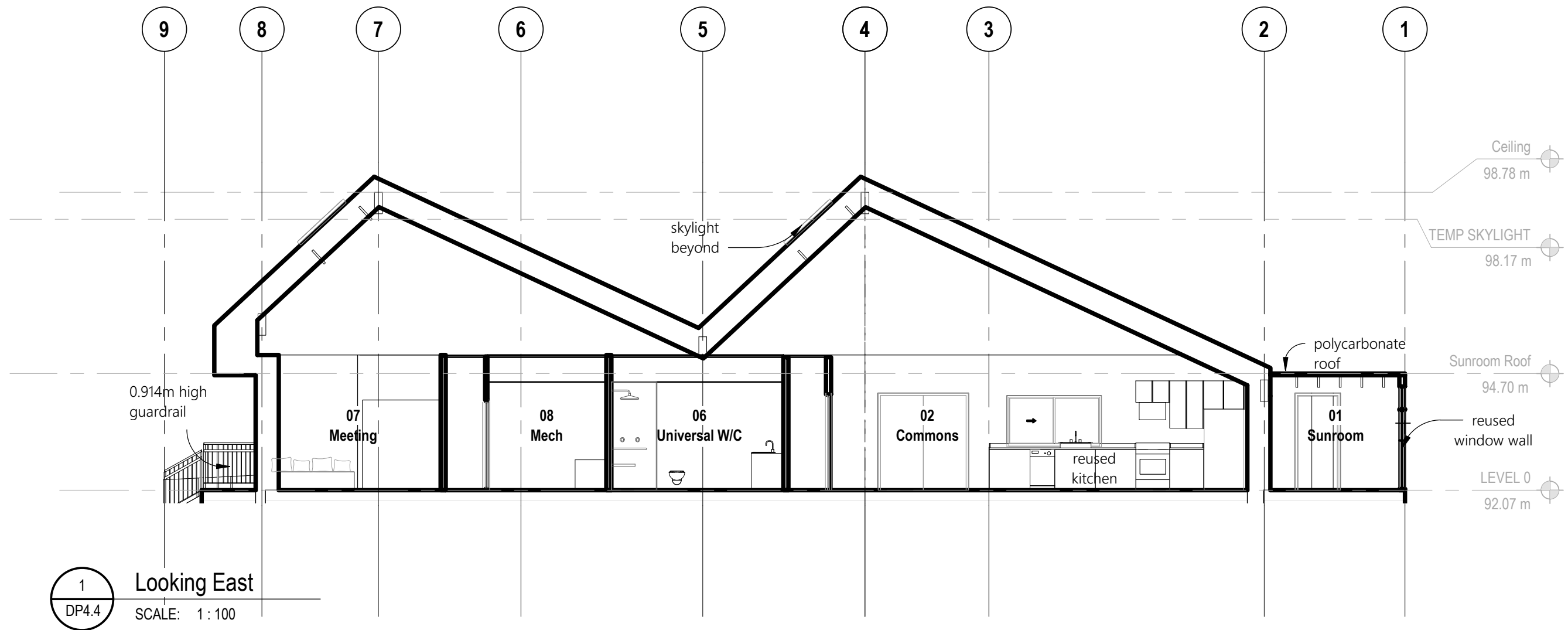


1 NORTH ELEVATION
DP4.3 SCALE: 1 : 100

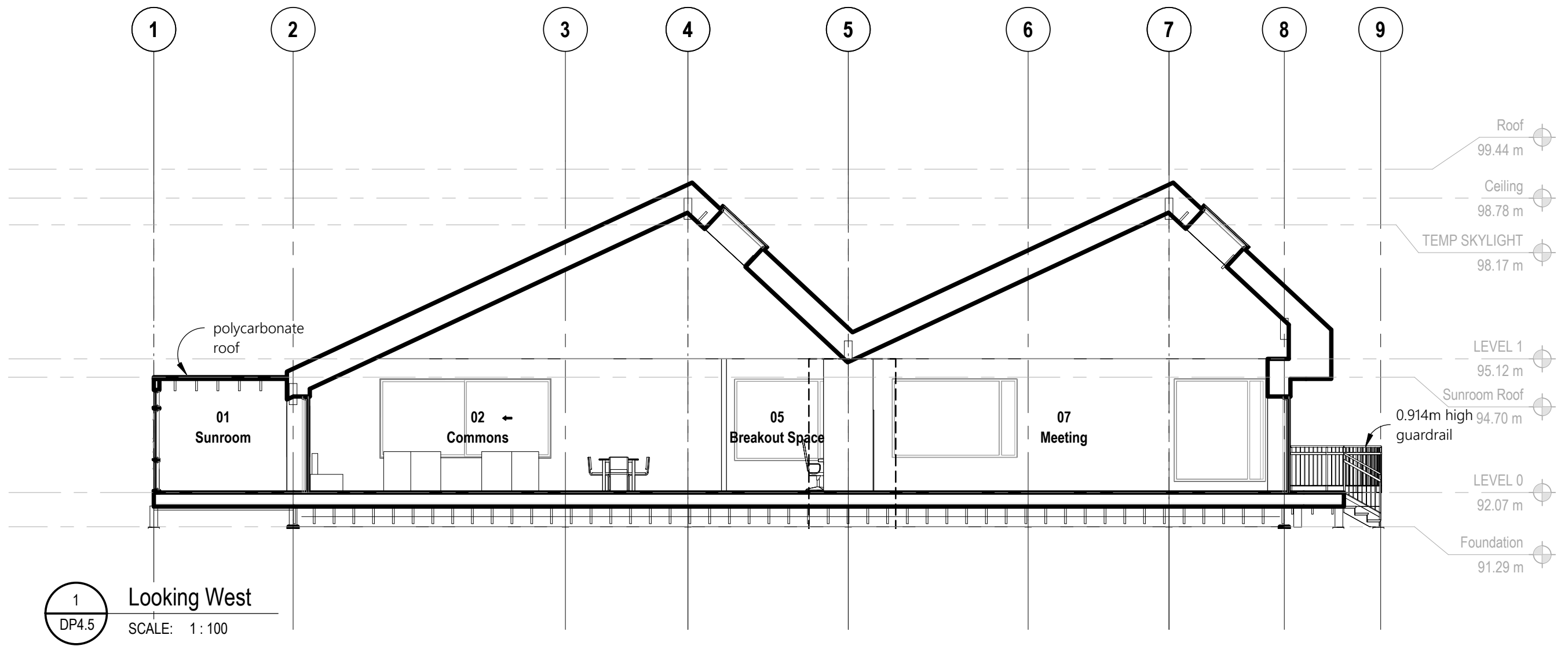



2 SOUTH ELEVATION
DP4.3 SCALE: 1 : 100

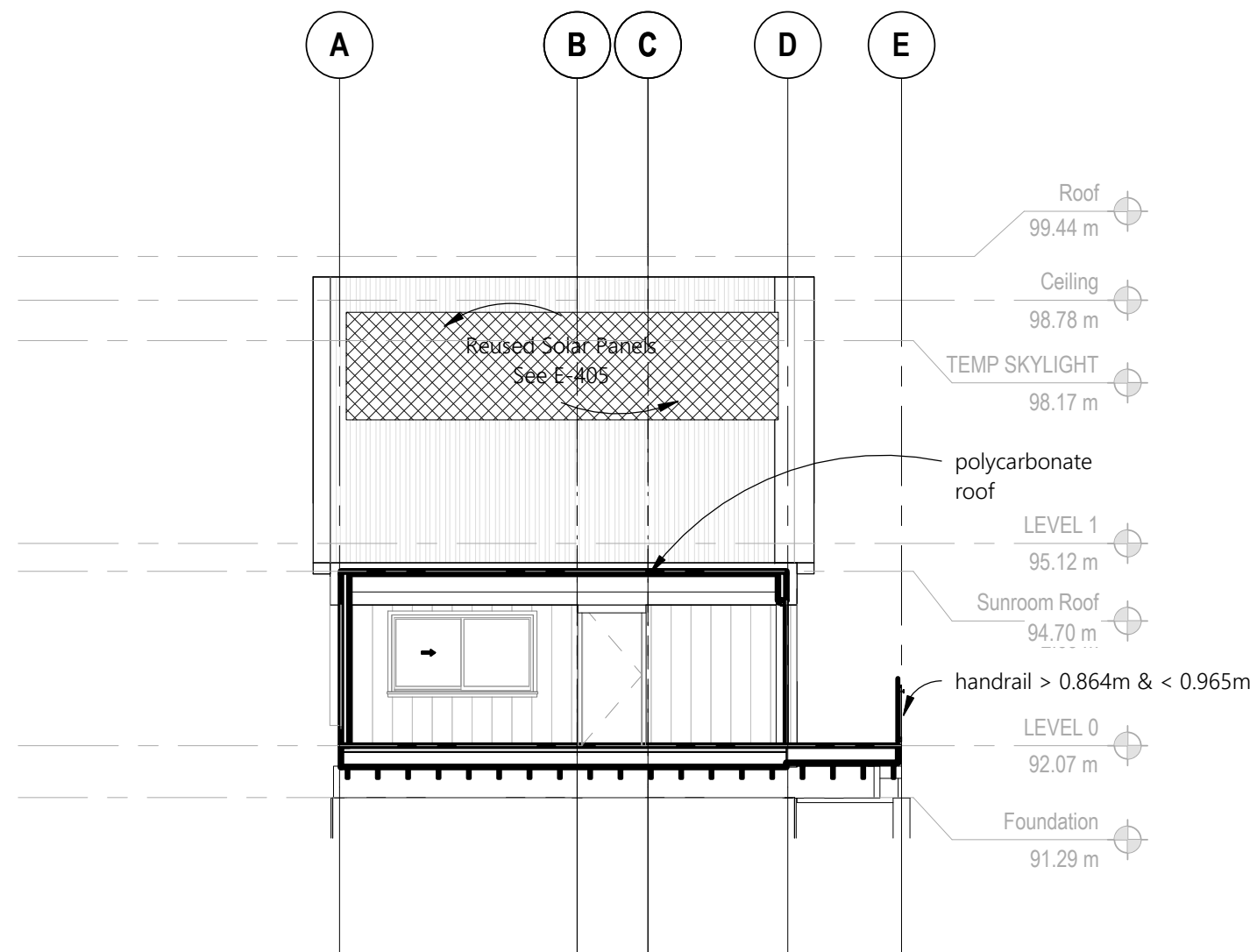
	PROJECT	THIRD SPACE COMMONS	SHEET	DP4.3	DATE	04/20/22
	TITLE	N & S ELEVATIONS	SCALE	1 : 100	REVISION	



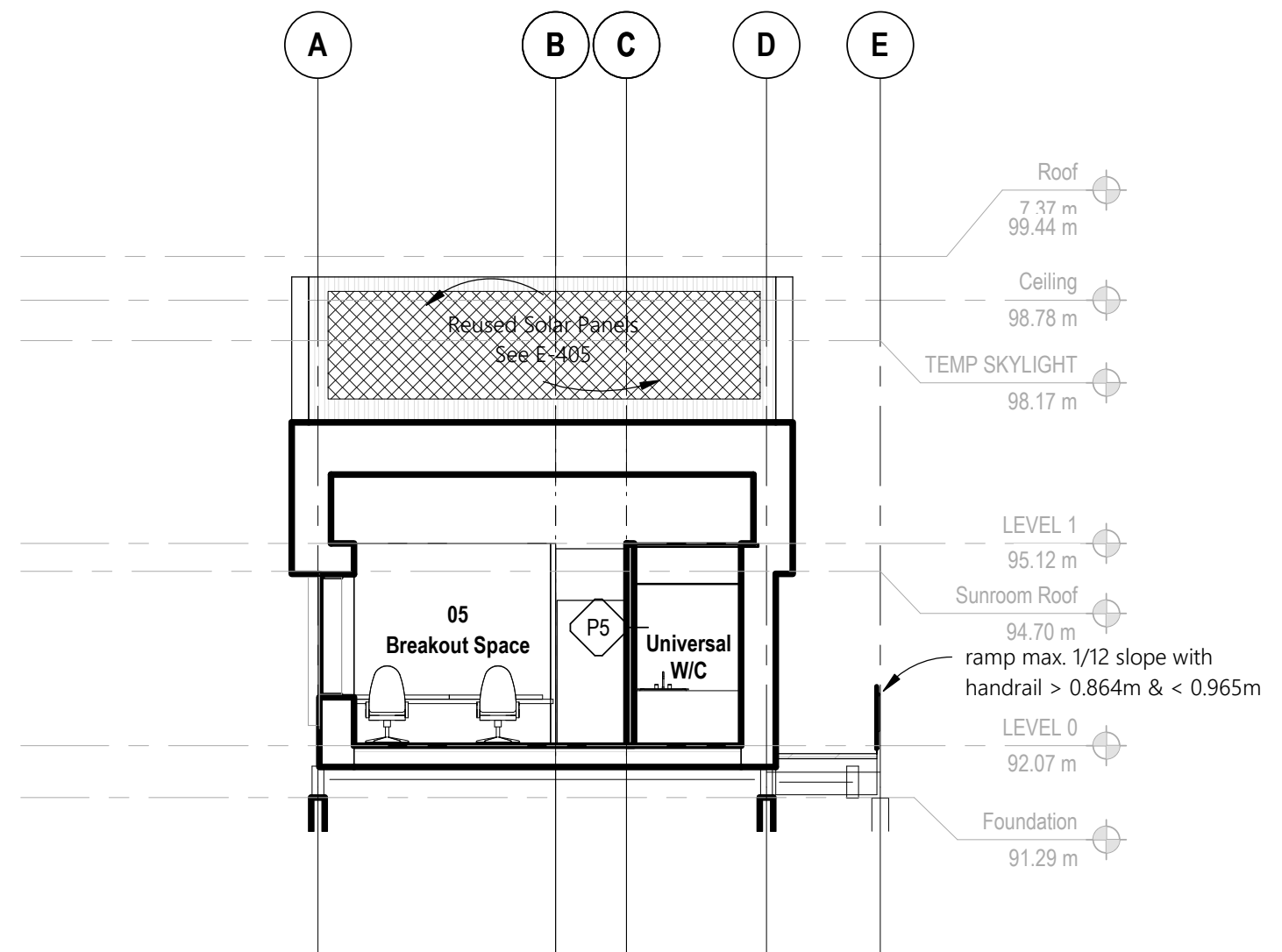
	PROJECT	THIRD SPACE COMMONS	SHEET	DP4.4	DATE	04/20/22
	TITLE	EAST SECTION	SCALE	1:100	REVISION	



	PROJECT	THIRD SPACE COMMONS	SHEET	DP4.5	DATE	04/20/22
	TITLE	WEST SECTION	SCALE	1 : 100	REVISION	

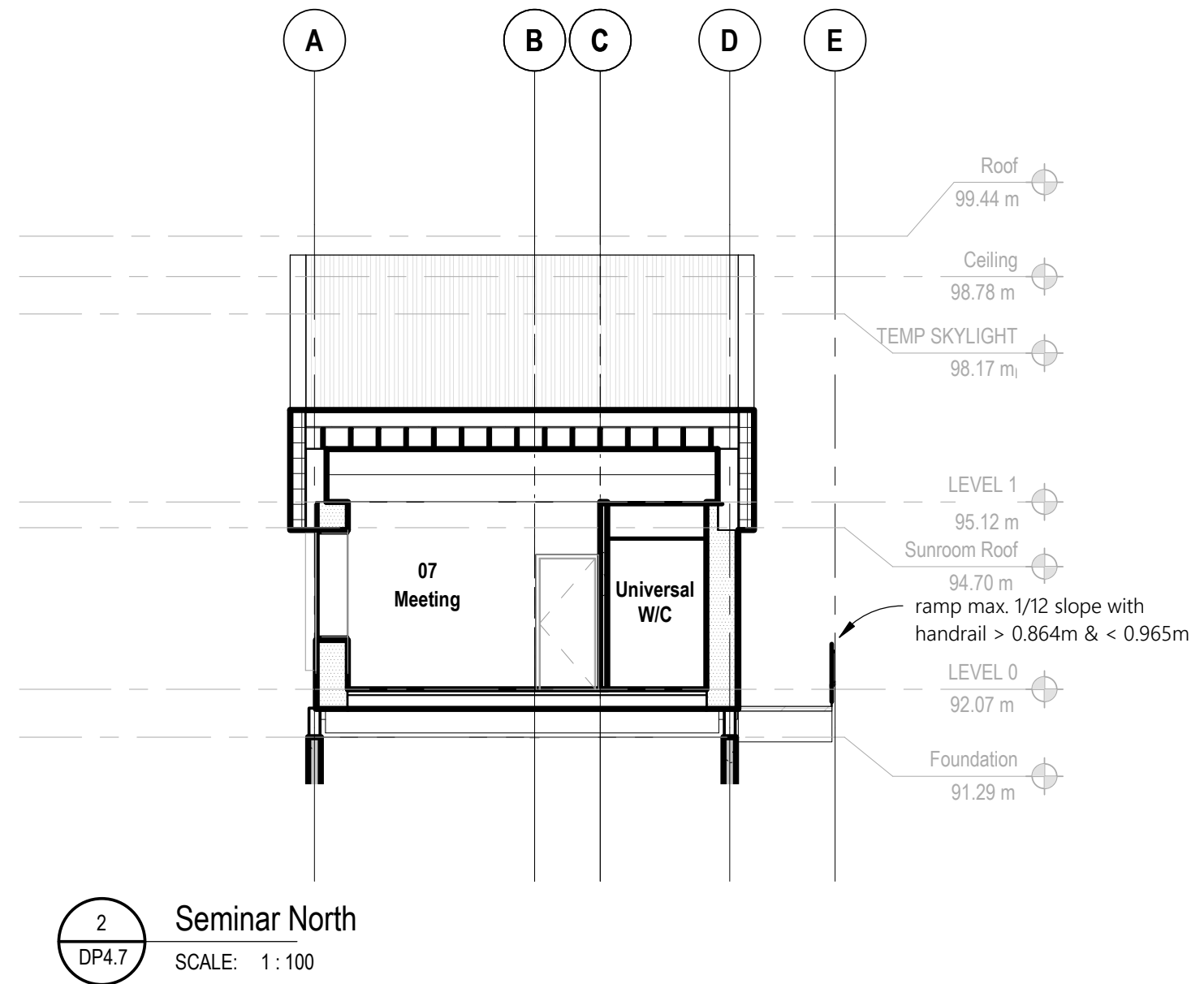
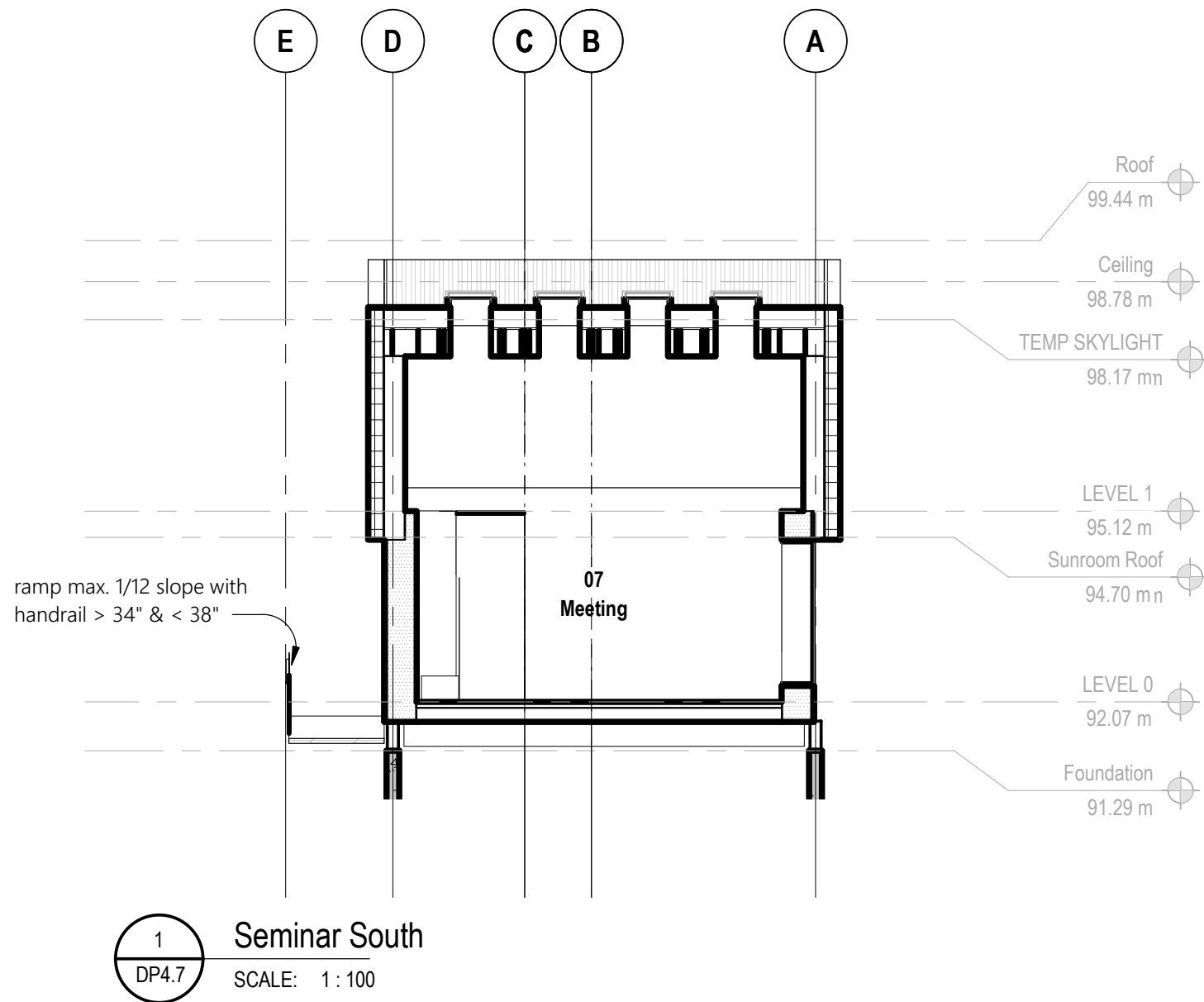



2 Sunroom
DP4.6 SCALE: 1:100

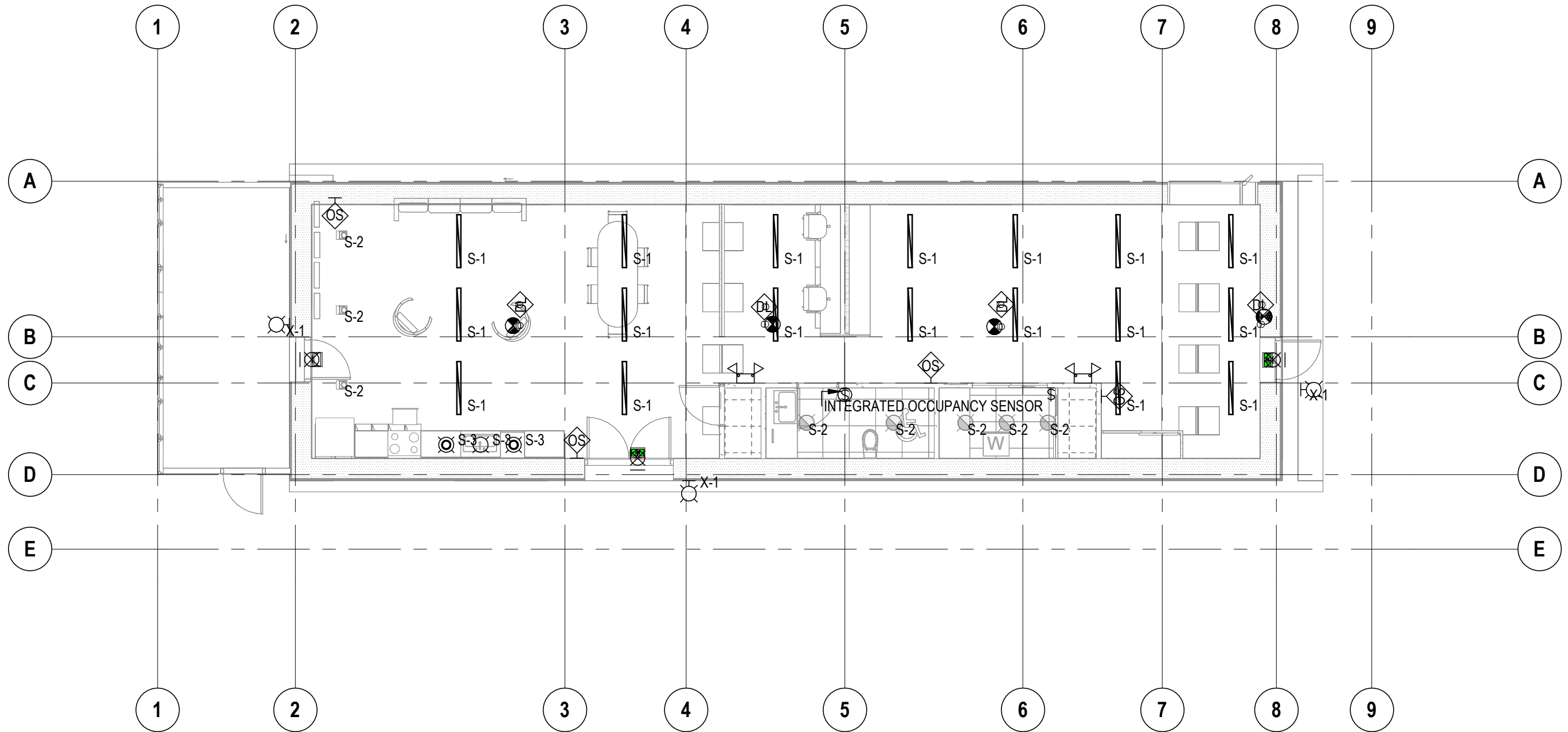
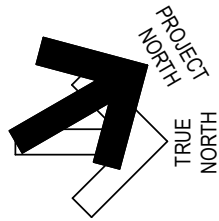


3 Breakout Room
DP4.6 SCALE: 1:100

	PROJECT	THIRD SPACE COMMONS	SHEET	DP4.6	DATE	04/20/22
	TITLE	CROSS SECTIONS	SCALE	1:100	REVISION	



	PROJECT	THIRD SPACE COMMONS	SHEET	DP4.7	DATE	04/20/22
	TITLE	CROSS SECTIONS	SCALE	1 : 100	REVISION	



1
DP2.4

LEVEL 0 - LIGHTING & LIFE SAFETY

SCALE: 1 : 100

GENERAL NOTES:

- A. ALL SMOKE DETECTORS SHALL BE HARDWIRED TO LOCAL LIGHTING CIRCUIT.
- B. WHERE A ROUGH-IN IS SPECIFIED FOR A CEILING FAN, THE BOX SHALL BE LISTED FOR THE APPLICATION AND WEIGHT OF THE FAN IT SUPPORTS.
- C. CEILING FAN BLADES SHALL NOT OBSTRUCT SMOKE/CO DETECTION BY THE ALARM.

- D. ALL LIGHTING LEVELS AND CONTROLS SHALL MEET THE UBC LIGHTING GUIDELINES LISTED IN THE VANCOUVER CAMPUS PLAN PART 3 SEC. 2.5.2.
- E. ALL EQUIPMENT INSTALLATIONS AND MATERIAL SELECTION TO BE IN ACCORDANCE WITH UBC TECHNICAL GUIDELINES DIVISION 26 ELECTRICAL.