

# ?əmí ce:p kʷətɬʷiləm | Welcome

## Musqueam and UBC have a long-standing relationship and history of engagement.

Musqueam and UBC are working toward building meaningful, reciprocal and mutually beneficial partnerships.



For millennia, Musqueam people have lived in the area that includes the lands upon which the University of British Columbia's Vancouver campus is now located. As the river delta grew, settlements moved down the river to maintain their position at the mouth of the river, where the main village has been for 4,000 years.

For time immemorial, Musqueam people have been stewards and caretakers of these lands and have shared it with others. These lands have been a place of learning where the Musqueam people acquired knowledge of local plants and animals for their enduring wellbeing and ways of thriving with these resources.

UBC has existed on these lands for just over 100 years and with the arrival of the university, UBC began to grow on these lands. UBC acknowledges its Vancouver campus is located on the traditional, ancestral and unceded territory of the Musqueam. The Province of BC chose Point Grey as the site for UBC, and endowed the university with 402 hectares of land through crown grants commencing in 1925. Musqueam representatives have advised that these decisions were made without their involvement.

### Purpose of this engagement:

UBC is inviting Musqueam community members to share stories, ideas and feedback with UBC. Your contributions are an important input into Musqueam's voice in UBC's Campus Vision 2050, a comprehensive land use planning process that will shape how UBC Vancouver's physical campus changes and grows over the next 30 years. This is also an opportunity to learn about Musqueam and UBC's deepening relationship.

**We want to hear from you.**  
**Share your ideas at the dinner or scan the QRcode for a link to this information and a survey.**



Open your camera app



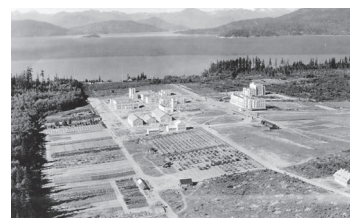
Frame the QR code



Click on the link



Early Days at UBC



An emerging campus



A commuter campus



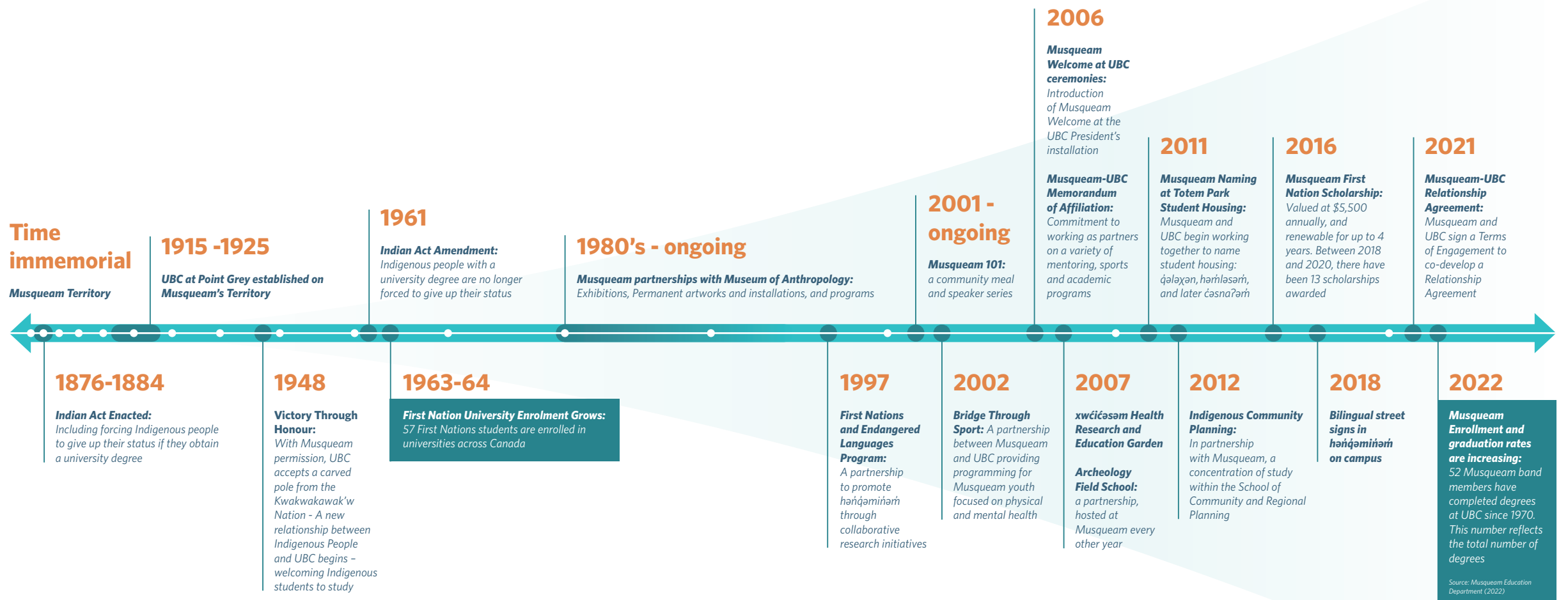
A sustainable, transit, oriented community

You can enter into a prize draw for 1 of 5 \$100 Visa Gift Cards when you complete the survey or sign in at the dinner.



# Musqueam and UBC's Relationship Over the Years

There has been a significant shift in our relationship over the past 70 years – from a time when Indigenous people were forced to give up their status to attend university, to a steady increase in Musqueam enrolment, programming and a growing partnership over the decades because of strong Musqueam leadership, commitment and tenacity.



Source for most points in time: UBC-Aboriginal Timeline and other UBC websites. Note: This timeline is illustrative of the shift in our relationship and does not include all events.



# Shared Interests

## Alignment Between Musqueam's Comprehensive Community Plan and UBC's Indigenous Strategic Plan and Strategic Priorities

*Bolded are core objectives; non-bolded are community objectives*

### Musqueam's Comprehensive Community Plan Objectives

**Become a self sufficient, self-governing Musqueam Nation**

**Become a complete, healthy Musqueam Community**

Address our community educational needs

Improve our health and wellbeing

Protect our environment & conserve natural resources

Address our housing needs

Advance financial self-sufficiency

Advance better governance of our nation

Support youth involvement

Help members get the jobs they want

Address our community's recreation needs

Take pride in our culture

Support for elders

### UBC's Indigenous Strategic Plan and Strategic Priorities

Connecting UBC to the region

Leadership in climate action and sustainability

More housing and affordability for UBC

Advancing meaningful recognition of Indigenous human rights, in alignment with the UBC Indigenous Strategic Plan

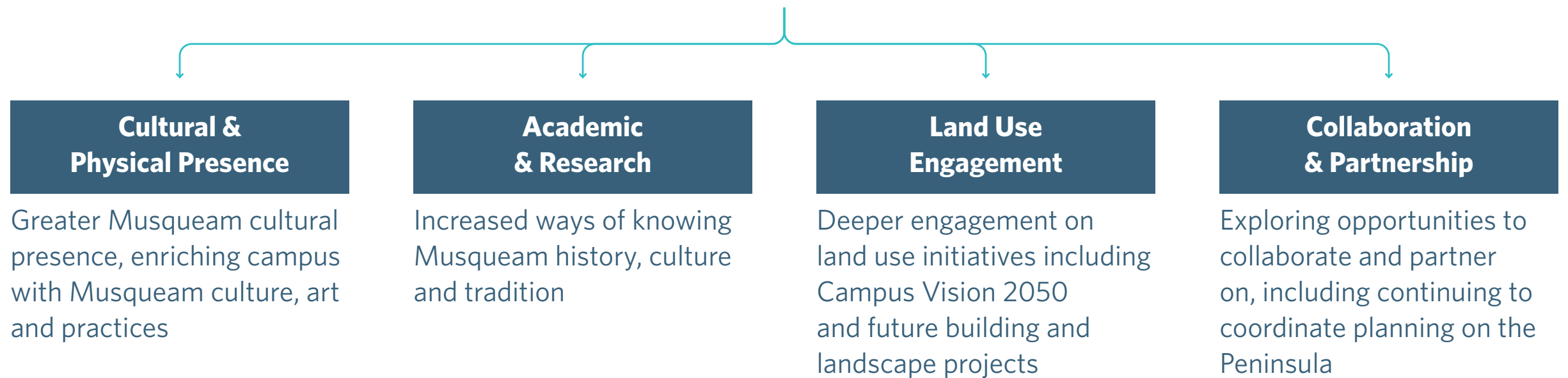
Moving forward in a deeper, enduring relationship with Musqueam

Embedding equity and inclusion in all areas of academic, work and campus life



# Musqueam-UBC Relationship Agreement

## Areas being explored in the Relationship Agreement



# Deepening Engagement Through Campus Projects

Musqueam staff and knowledge holders are working with UBC on a variety of projects to enrich the campus with a stronger Musqueam presence:

- welcoming people to Musqueam territory,
- creating a greater sense of Musqueam belonging on campus, and
- integrating Musqueam knowledge and expertise into campus landscapes.

This can be seen in the design of new buildings and landscapes on campus.



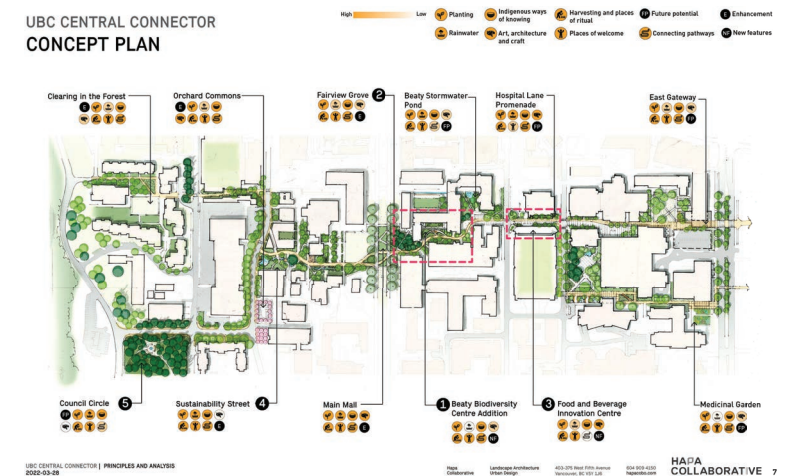
## Gateway Health Building

Located at the main entrance to UBC, the landscape around the Gateway Health Building is being designed to bring the surrounding forests into the heart of the campus, and express Musqueam presence.



## Musqueam Names on Campus

tə ʃxʷhələləm̓s tə kʷaʃkʷəʔaʔɿ is the newest student residence community at UBC. Musqueam artist Kelly Cannell designed the artwork for the canopy.



## Connected Landscapes

Emerging framework for campus landscapes using strategies to increase Musqueam presence on campus.



## Musqueam art, signage and banners

# What We've Learned So Far

Recent engagement sessions with Musqueam community members and staff, campus projects and a Musqueam-UBC Peninsula Coordination workshop established a deeper understanding of the cultural and ecological sensitivity across the Point Grey Peninsula, the need to manage the impacts of campus growth, the importance of strengthening Musqueam presence on campus and the great value of building an enduring partnership.



Create spaces that are both welcoming to and inclusive of Musqueam people in buildings and outdoors

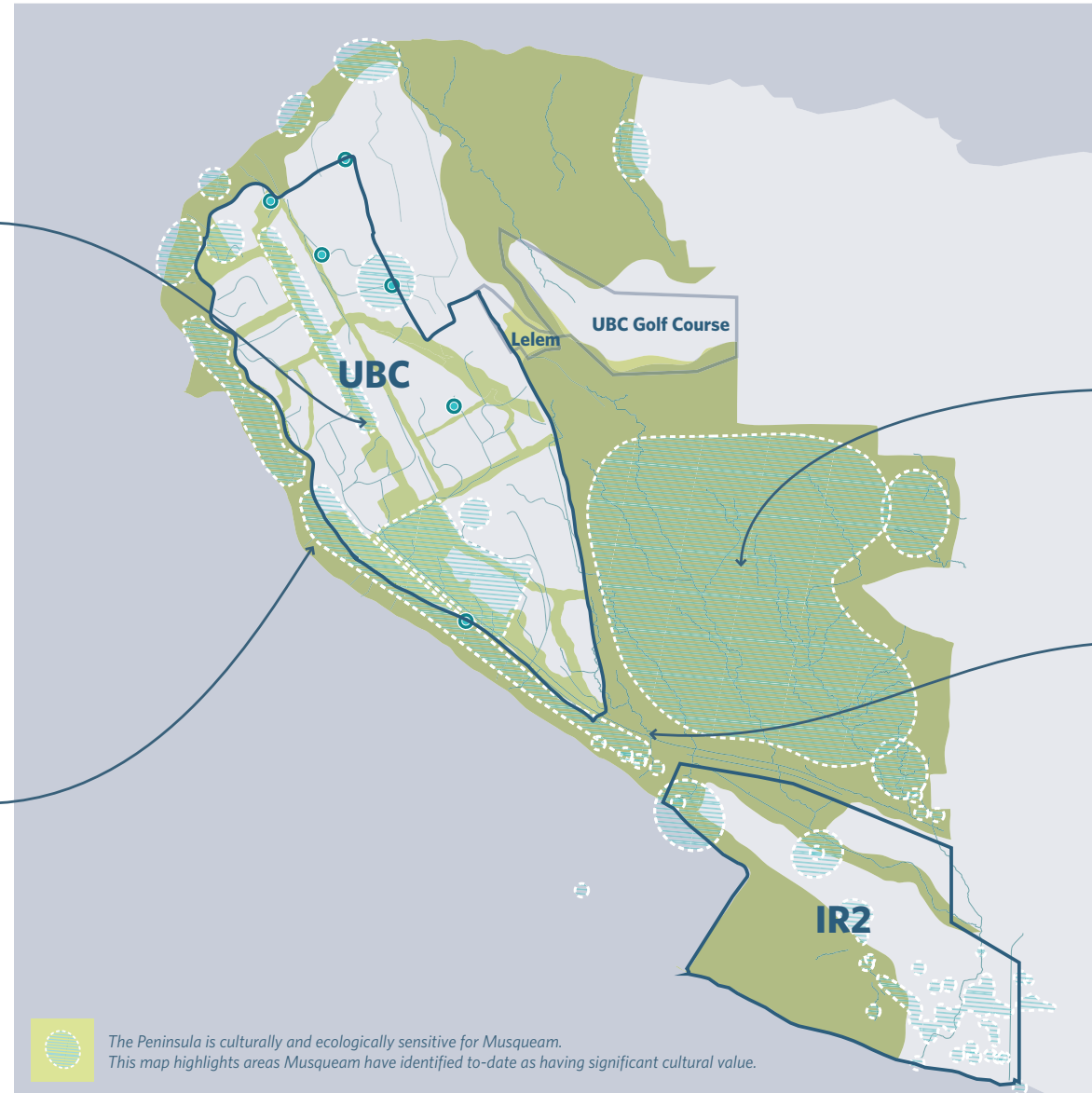
Welcome people to Musqueam territory by enhancing visual identity and storytelling

Enrich the campus with more Musqueam culture, art, language, history and practices

Reflect Musqueam knowledge and expertise in landscape design and indigenous planting choices e.g. redesign the Bosque with indigenous plants and Musqueam spaces; have harvesting areas for Musqueam use (e.g. youth programs with knowledge keepers)



Valuable estuaries, intertidal habitat and creeks. These areas that can be enhanced and repaired through protection from industrial uses and sediments.



Planning for future Skytrain and its impacts, both positive and negative, on Musqueam cultural and community use, ecology, mobility and development patterns on the peninsula



Cultural and ecological importance of Pacific Spirit Park and concerns about the increasing urbanization of the park



Concerns about increasing traffic, parking and safety issues along SW Marine Drive



Opportunities to work together to understand capacity needs for storm, sewer and road infrastructure

Remunerate Musqueam members for their work with UBC on projects (e.g. time and parking)



# Campus Vision 2050

Campus Vision 2050 is a 2.5-year UBC-led public land use planning process focused on the physical development of the Vancouver campus.

The process will result in a long-term plan for the campus that supports liveability, reconciliation, climate action, affordability, connectivity, and academic need. It seeks to balance the multiple interests of Musqueam and the UBC community.

## Campus Vision 2050 Guiding Principles



## Process to-Date

Campus Vision 2050 is being developed through comprehensive engagement with the campus community and Musqueam, and informed by existing UBC policy, principles, future space needs and societal imperatives.

In June 2022, the UBC Board of Governors approved Terms of Reference that include guiding principles, and directions for growth over the next 30 years.

## Different land use approaches are being explored to achieve the following directions over the next 30 years:

- More open space and amenities to support more people (e.g. parks, natural areas, shops, child care, etc.)
- Retention of green academic space (e.g. UBC Farm, UBC Botanical Gardens, Sports Fields, etc.)
- Flexible target of 20 per cent more academic floor space and a minimum of 3,300 new student housing beds to keep pace with enrolment and meet the future needs of teaching, learning, research and innovation
- Doubling neighbourhood residential units on campus (up to 20-per cent above the current Land Use Plan) to meet the housing needs of the UBC community



# Campus Vision 2050: Musqueam Engagement

UBC is changing the way we are planning the campus, including deeper engagement with Musqueam and co-developing how to engage Musqueam in Campus Vision 2050. This engagement is an opportunity for Musqueam community members to engage on how the physical campus changes and grows over the next 30 years.

## Musqueam Engagement

UBC and Musqueam have co-developed a process for Musqueam engagement in Campus Vision 2050.

This includes:

- Musqueam-UBC meetings with senior administration from both communities along with Chief and Council meeting updates.
- Two representatives from Musqueam who are part of the Campus Vision 2050 Community Advisory Committee.
- Musqueam community-wide engagement, which includes sessions with Musqueam staff and community members, along with a community dinner event, as well as a survey tailored to Musqueam. The community will continue to be engaged throughout the process, including a Musqueam invitation to attend a Public Hearing on a request to the Province for amendments to UBC's Land Use Plan required to enable the long-term vision for the campus.

## How is Musqueam shaping Campus Vision 2050?

Five 'big ideas' have emerged through extensive engagement with the UBC community and Musqueam, research and analysis, and intensive workshops involving experts as well as diverse voices from across the campus and neighbourhoods. The ideas are rooted in the Campus Vision 2050 guiding principles.

The 'big ideas' are high level directions that will shape the future of the campus and are critical to meeting the needs and aspirations of the community.

To-date, Musqueam engagement shaped these big ideas by incorporating learnings from current projects like the Gateway Building and the Peninsula Coordination Workshop, ongoing dialogue with Musqueam staff and leadership on Campus Vision 2050 and two recent engagement sessions with 25 Musqueam community members and staff.

We are now inviting Musqueam community members to share their thoughts on the future of the campus, including these five 'big ideas' for Campus Vision 2050. Input will be used to inform a draft 30-year Vision.





# Big Idea 1 – Restorative and Resilient Landscapes

In preparing for campus growth, this big idea is about how UBC will protect and enhance green spaces and the ecology of the campus to:

- Support climate mitigation and adaptation
- Increase Musqueam presence
- Reflect Musqueam knowledge, expertise values in landscape design and planting choices

## Key Features of this Big Idea Relevant to Musqueam



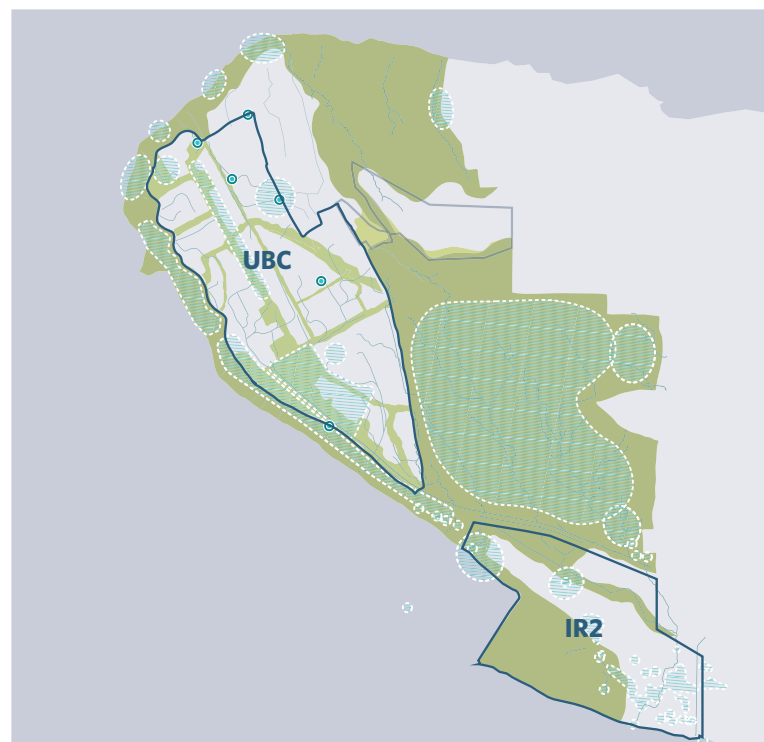
Enrich campus landscapes with a strong Musqueam welcome and presence



Bring the surrounding forests into the campus to support species movement, increase biodiversity, carbon sequestration, and nature-based solutions



Design landscapes that nurture social wellbeing and create sense of place



Work with natural conditions to shape where new development and green spaces occur and connect buildings with nature




Create rich aquatic ecologies via green infrastructure that absorbs, cleans and transfers rainwater



Introduce abundant Indigenous plants, traditionally harvested by Musqueam, and having harvesting areas for Musqueam



Re-envision portions of Main Mall with opportunities for teaching, research and innovation, and different ways of knowing

 The Peninsula is culturally and ecologically sensitive for Musqueam. This map highlights areas Musqueam have identified to-date as having significant cultural value. This map is being used to shape this big idea.

# Big Idea 2 - Learning City

Looking to the future of teaching, learning and research, this big idea is about UBC's plans to grow the campus in a way that enhances innovation, creativity, collaboration and knowledge exchange by creating:

- neighbourhood hubs that bring together housing, retail, affordable food options, public spaces and spaces for off-campus community members
- flexible, adaptable academic spaces that invite interdisciplinary collaboration and experiential learning
- spaces that seed grass roots community-based entrepreneurship and initiatives

## Key Features of this Big Idea Relevant to Musqueam



New kinds of outdoor spaces for education and to bring communities together



Places where knowledge holders can teach youth about plants and harvesting



Places for the broader community to learn about indigenous knowledge, culture, history, and practices.

Spaces to celebrate Musqueam students and inspire future students.



Indigenous knowledge and practices across the campus as an inroad to alternative ways of knowing and problem solving.



# Big Idea 3 - Connected Campus

This big idea sets out how UBC will make it easier for people of all ages and abilities to get to, from and around campus comfortably and safely while reducing greenhouse gas emissions from commuting. This includes:

- the arrival of Skytrain to UBC which will enable shorter, greener, less complicated commutes and improve connectivity with the broader region
- connecting key neighbourhood, academic and cultural areas and accommodating new local/regional transit services

## Key Features of this Big Idea Relevant to Musqueam



Arrival of Skytrain will be transformative for the peninsula



Visible, accessible parking spaces for Elders within close proximity of all building and a simplified permit system will accommodate people with mobility challenges



Planning activities will be coordinated with Musqueam to help meet the needs of the communities that make up the peninsula and mitigate impacts



# Big Idea 4 - More Housing and Expanded Affordability for UBC

Affordable housing is a challenge for students, faculty and staff. This big idea sets the direction for expanding housing for UBC community members with more affordable housing options close to where they work or study, providing:

- more family homes;
- more opportunities to age in place; and
- more amenities that make life easier, including childcare, groceries and transit.

This includes more student housing, rental housing, faculty and staff discounted rental, and market housing (e.g. condos). It will also expand rental housing and affordability programs, including for non-UBC campus employees.

## Key Features of this Big Idea Relevant to Musqueam



Reducing the number of people commuting to campus will help UBC address the climate crisis



Continue providing priority housing access for Indigenous students



Becoming a complete, healthy, sustainable community

# Big Idea 5 - A Community of Communities

To encourage and support a strong sense of community and belonging, this idea is about turning a big place into a series of smaller, identifiable communities. This will help scale down and humanize a large campus that can be difficult to navigate, particularly for people with disabilities. This includes:

- Accessibility features across campus
- Culturally diverse, inclusive and
- Intergenerational spaces (e.g., gathering/ spiritual/interfaith spaces).
- Co-creating a stronger Musqueam-specific spaces and place names

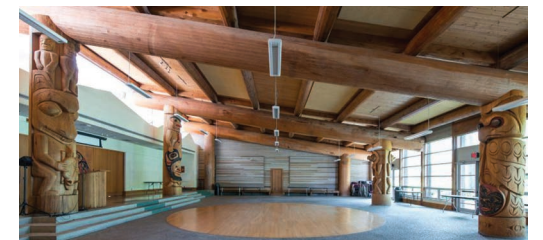
## Key Features of this Big Idea Relevant to Musqueam



Co-create a stronger Musqueam  
Welcome with Musqueam-specific spaces,  
place names and share the history of the  
land across campus



Dedicated spaces where Musqueam  
community members, gather, build  
community identity and feel they belong  
(e.g. Musqueam spaces at UBC)



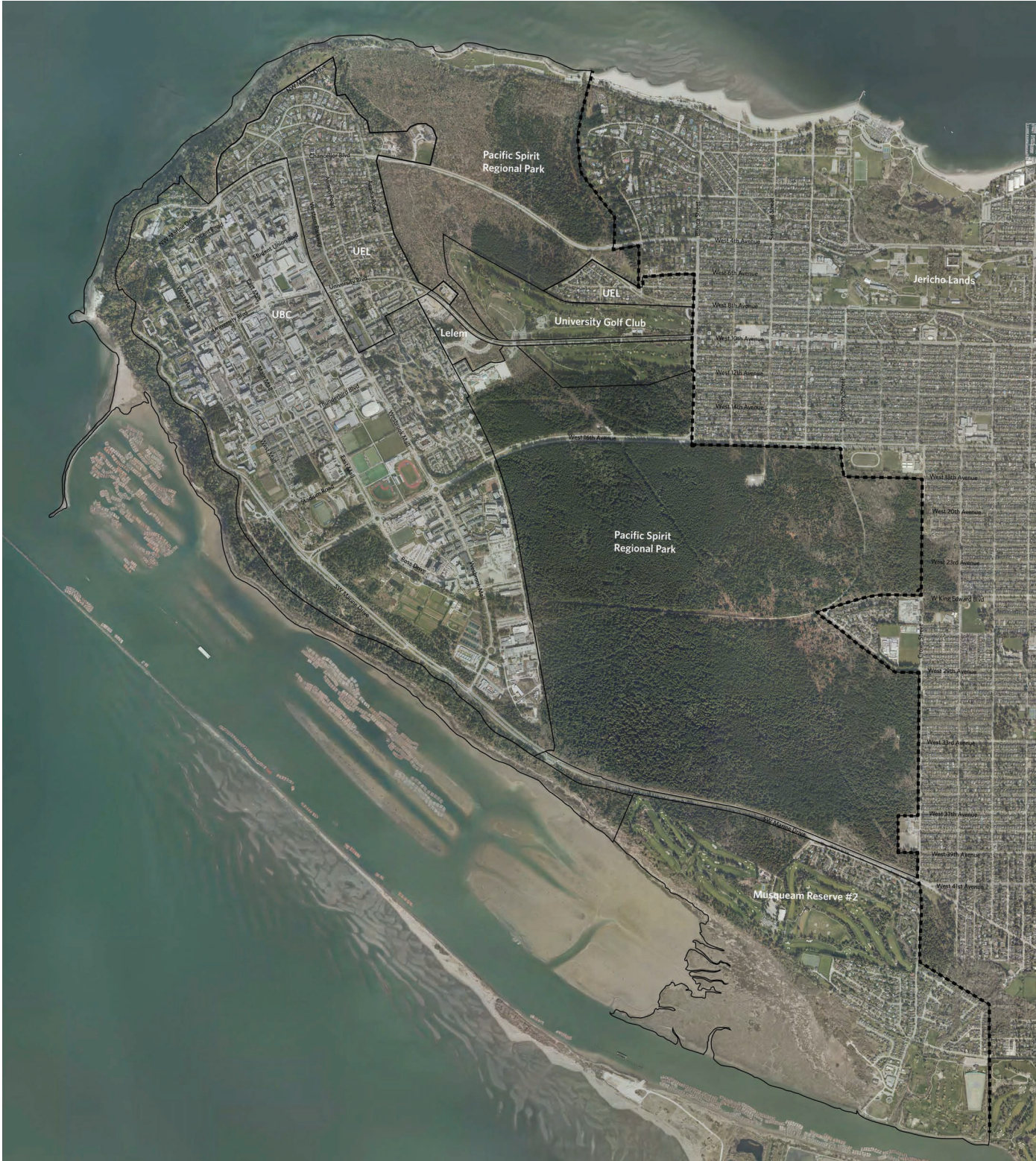
Flexible, multi-functional spaces with  
opportunities for shared Musqueam  
community use



# Feedback



Looking at this map of the Peninsula, which includes the UBC campus, what is important to you and Musqueam about this area?



# Feedback

## Big Idea 1: Restorative and Resilient Landscapes

**What about this idea is important to you and the Musqueam community, and why?**

**What should UBC be considering to enhance Musqueam belonging and welcoming of others through this idea?**



# Feedback

## Big Idea 2: Learning City

**What about this idea is important to you and the Musqueam community, and why?**

**What else should UBC be considering to enhance this idea?**





# Feedback

## Big Idea 3: Connected Campus

**What about this idea is important to you and the Musqueam community, and why?**

**What else should UBC be considering to enhance this idea?**



# Feedback

## Big Idea 4: More Housing on Campus and Expanded Affordability for UBC



**What about this idea is important to you and the Musqueam community, and why?**

**What else should UBC be considering to enhance this idea?**



# Feedback

## Big Idea 5: A Community of Communities



**What about this idea is important to you and the Musqueam community, and why?**

**What kind of Musqueam places would you like to see?**



# Feedback

Is there anything missing or anything else you'd like to share?

