

**UBC
campus
vision
2050**

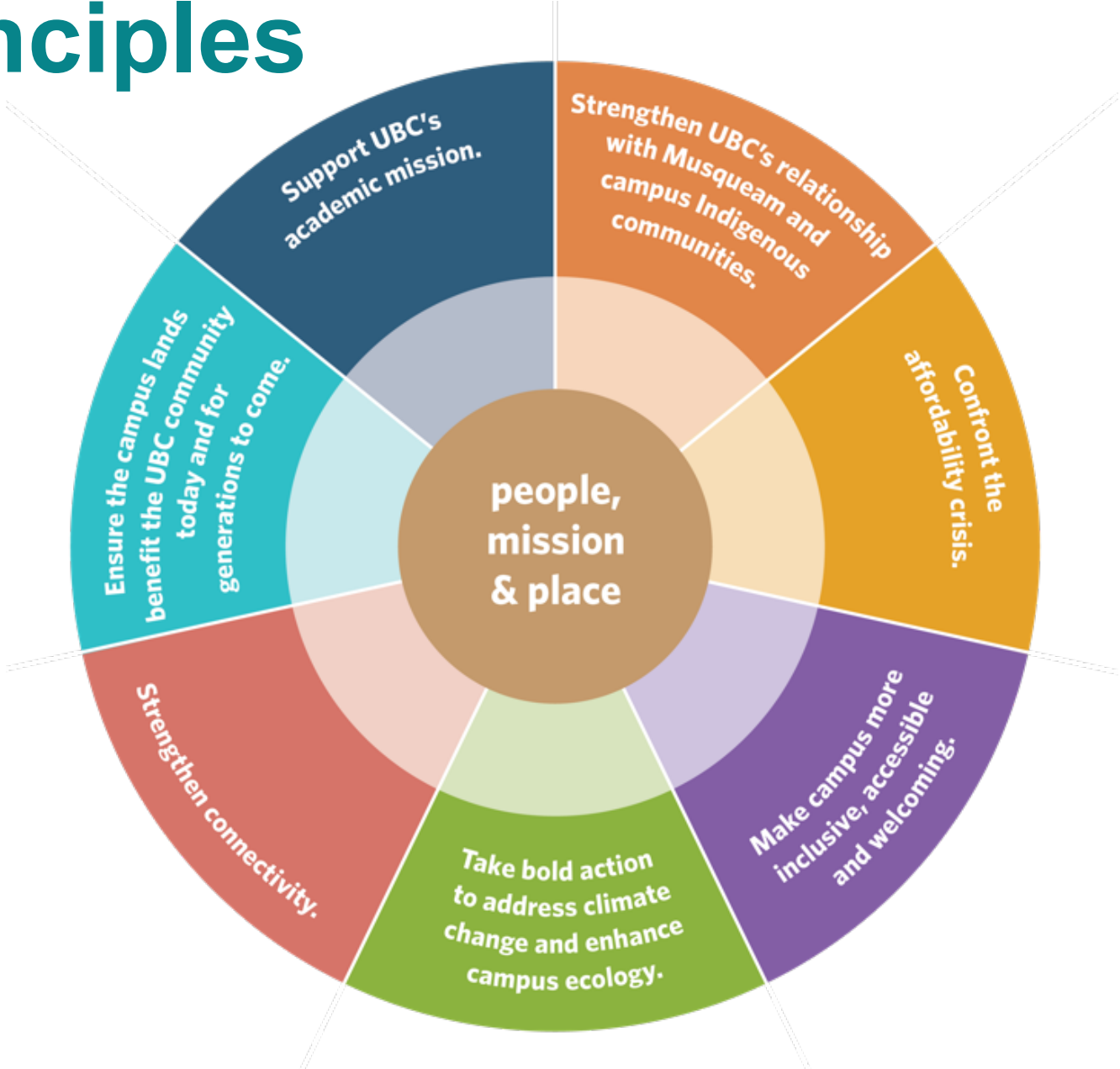


Campus Vision 2050 – Draft Guiding Principles + Strategies



Draft Guiding Principles

The draft principles reflect the vision, purpose and values of UBC and align with the university's strategic focus on "creating vibrant, sustainable environments that enhance wellbeing and excellence for people at UBC and beyond," as articulated in the Strategic Plan.



Support UBC's academic mission.

UBC is a university, first and foremost, with a vision to inspire people, ideas and actions for a better world. Campus Vision 2050 must support this vision and the university's pursuit of excellence in research, teaching, learning and community engagement to foster global citizenship and advance a sustainable and just society.

At the same time, it must be responsive to the evolving role the university has in confronting the challenges of today while being adaptive and resilient in the face of future change and uncertainty.

Strategies:

- Provide academic building space that supports a range of collaborative and interdisciplinary teaching, research and learning environments, including innovative environments that are responsive to evolving needs, such as hybrid in-person and online learning.
- Create academic, research and commercial spaces that nurture knowledge creation and innovation and invite interaction, knowledge exchange, collaboration and community partnerships.
- Ensure the appropriate level of housing, amenities and services to support students, faculty and staff living on campus.
- Use the campus to research, implement and test innovative approaches to achieving sustainability and wellbeing commitments on campus and for the broader region.

1



Strengthen UBC's relationship with Musqueam and campus Indigenous communities.

UBC and Musqueam are working together to develop a more meaningful, reciprocal, mutually beneficial and enduring relationship to benefit both communities now and for future generations.

Campus Vision 2050 must support this work and the goals and actions of the UBC Indigenous Strategic Plan, while honouring and celebrating UBC's host nation on whose traditional territory the campus is privileged to be situated.

Strategies:

- Co-develop new ways to engage Musqueam in land use planning through the Musqueam-UBC Relationship Agreement.
- Enrich the campus with a stronger Musqueam presence (e.g., hən'qəmin'əm' street and place names, outdoor art and storytelling).
- Create spaces that are welcoming to and inclusive of Musqueam and all Indigenous peoples.
- Create campus landscapes that integrate Musqueam knowledge and expertise, continue the tradition of and renew Musqueam practices, and incorporate traditional ways of knowing (e.g., places where elders can teach youth about plants and harvesting).

2



Confront the affordability crisis.

UBC is located in one of the least affordable regions in the world and can demonstrate innovation in confronting the housing crisis in the context of the UBC community.

Unaffordable housing and food insecurity are detrimental to the well-being of the community and ultimately the future success of the university.

Campus Vision 2050 must make daily life on campus more affordable, convenient and supportive and enable new ways to provide affordable housing and food options as part of a complete community concept. This is particularly important for faculty and staff recruitment and retention and to maintain the accessibility of education.

Strategies:

- Through the UBC Housing Action Plan review, lead in addressing housing affordability with innovative approaches to location, amount, type, tenure and cost of housing.
- Explore new housing and community design models that support diverse social needs and household types.
- Provide and support convenient access to services and amenities that meet diverse daily needs, including those essential to wellbeing (e.g., groceries, schooling and childcare as well as green and open spaces, recreation sites and prayer space).
- Collaborate and partner with UBC Food Services and others to provide more affordable food options.

3



Make campus more inclusive, accessible and welcoming.

Everyone deserves to feel welcomed and supported in their daily activities on campus and in the neighbourhoods.

Campus Vision 2050 must result in plans that consider all ages, abilities and backgrounds and lead to equitable, diverse and inclusive spaces that help achieve the best learning, working and living environments for all. It must also encourage and support a strong sense of community and belonging.

Strategies:

- Create welcoming, supportive and safe spaces for the diverse campus community, with particular emphasis on historically marginalized, equity-deserving groups.
- Design a barrier-free, universally accessible campus that provides dignified, welcoming and effective access to people of all ability levels.
- Design for safety and personal security.
- Develop a compact campus that prioritizes walking and rolling.
- Celebrate the diversity of the campus community with spaces for interaction, artistic and cultural expression and community building.



Take bold action to address climate change and enhance campus ecology.

Climate change and unsustainable land use threaten human and ecological wellbeing and biodiversity, disproportionately impacting marginalized and underprivileged people.

Campus Vision 2050 must support UBC's systemic, collective action to combat climate change, including reinforcing and aligning with Climate Action Plan 2030, and protect and enrich campus ecology and biodiversity.

Strategies:

- Embed a climate justice lens that recognizes privilege and inequality in land use plans and practices.
- Develop a transit-oriented campus that reduces the reliance on cars.
- Foster a climate-adaptive and resilient campus by enhancing and enriching biodiversity and natural systems while incorporating Indigenous ways of knowing.
- Apply circularity in waste, food, water and energy systems.
- Encourage development that optimizes existing infrastructure and assets and minimizes carbon emissions as a result of new building construction and operations.

5



Strengthen connectivity.

UBC suffers from limited connectivity with the broader region—socially, economically and ecologically—and getting to, from and around the 400-hectare campus can be difficult for many.

Campus Vision 2050 must improve connections within campus and to the broader region.

Strategies:

- Plan for SkyTrain, including enabling academic growth, housing options and research and community partnerships.
- Prioritize the use of active and sustainable transportation modes on campus, and respond to future mobility trends.
- Create a safe and comfortable transportation network that is easy to navigate
- Enhance ecological connectivity and the role the campus can play in achieving healthy and resilient natural systems that cross jurisdictional boundaries.
- Coordinate with academic planning at UBC sites across the region to use land efficiently and serve the academic mission.
- Coordinate planning of future UBC neighbourhoods and amenities with other regional jurisdictions.



Ensure the campus lands benefit the UBC community today and for generations to come.

The campus lands provide the space for world-class teaching and research facilities and thriving, complete, and livable neighbourhoods. They also support the community today and for generations to come through residential development that funds academic excellence, infrastructure and amenities, and affordable housing for faculty, staff and students.

Campus Vision 2050 must ensure the campus lands continue to serve these purposes, while also providing livable and sustainable communities that continue to make UBC an exceptional place to teach, learn, live, work and play.

Strategies:

- Explore responsible residential housing development to fund academic excellence, affordable faculty, staff and student housing, infrastructure and amenities, and a potential financial contribution towards the SkyTrain extension.
- Follow the Musqueam practice of long-term care by balancing what one takes from and gives back to the land.
- Optimize sustainability and livability in supporting a compact, livable and integrated campus.

