



## ISSUED FOR DEVELOPMENT PERMIT

2024-09-20

### CLIENT

UBC PROJECT SERVICES  
5TH FLOOR TEF 3, 6190 AGRONOMY RD  
VANCOUVER BC V6T 1Z3

PAMELA TROYER  
PAMELA.TROYER@UBC.CA

### ARCHITECTURAL, INTERIORS, AND SUSTAINABILITY

PERKINSWILL  
2200 - 1075 WEST GEORGIA ST  
VANCOUVER, BC V6E 3C9

JANA FOIT  
JANA.FOIT@PERKINSWILL.COM

### LANDSCAPE

HAPA COLLABORATIVE  
403-375 WEST 5TH AVE  
VANCOUVER, BC V5Y 1J6

JOSEPH FRY  
JFRY@HAPACOBO.COM

### STRUCTURAL

RJC ENGINEERS  
300 - 1286 WEST BROADWAY  
VANCOUVER, BC V6H 3X8

MEREDITH ANDERSON  
MANDERSON@RJC.CA

### MECHANICAL

SMITH + ANDERSEN  
300 - 6400 ROBERTS ST  
BURNABY, BC V5G 4C9

ADAM JUCK  
ADAM.JUCK@SMITHANDANDERSEN.COM

### ELECTRICAL

SMITH + ANDERSEN  
300 - 6400 ROBERTS ST  
BURNABY, BC V5G 4C9

DUGAN DOHERTY  
DUGAN.DOHERTY@SMITHANDANDERSEN.COM

### CODE

GHL CONSULTANTS LTD  
800 - 700 W PENDER ST  
VANCOUVER, BC V6C 1G8

GARY CHEN  
GC@GHL.CA

### ACOUSTICS

RWDI  
280 - 1385 W 8TH AVE  
VANCOUVER, BC V6G 3V9

CHRIS FRASER  
CHRIS.FRASER@RWDI.COM

### BUILDING ENVELOPE AND ENERGY MODELLING

RDH BUILDING SCIENCE INC  
400 - 4333 STILL CREEK DR  
BURNABY, BC V5C 6S6

LORNE RICKETTS  
LRICKETTS@RDH.COM

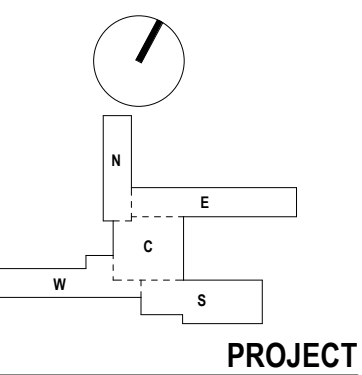




ISSUED FOR  
DEVELOPMENT PERMIT  
2024-09-20

ISSUED

KEYPLAN



**UBC ANSO RENEWAL**  
6303 NW MARINE DRIVE,  
VANCOUVER BC, V6T 1Z1

**PROJECT NUMBER**  
412404

REVISIONS

TITLE

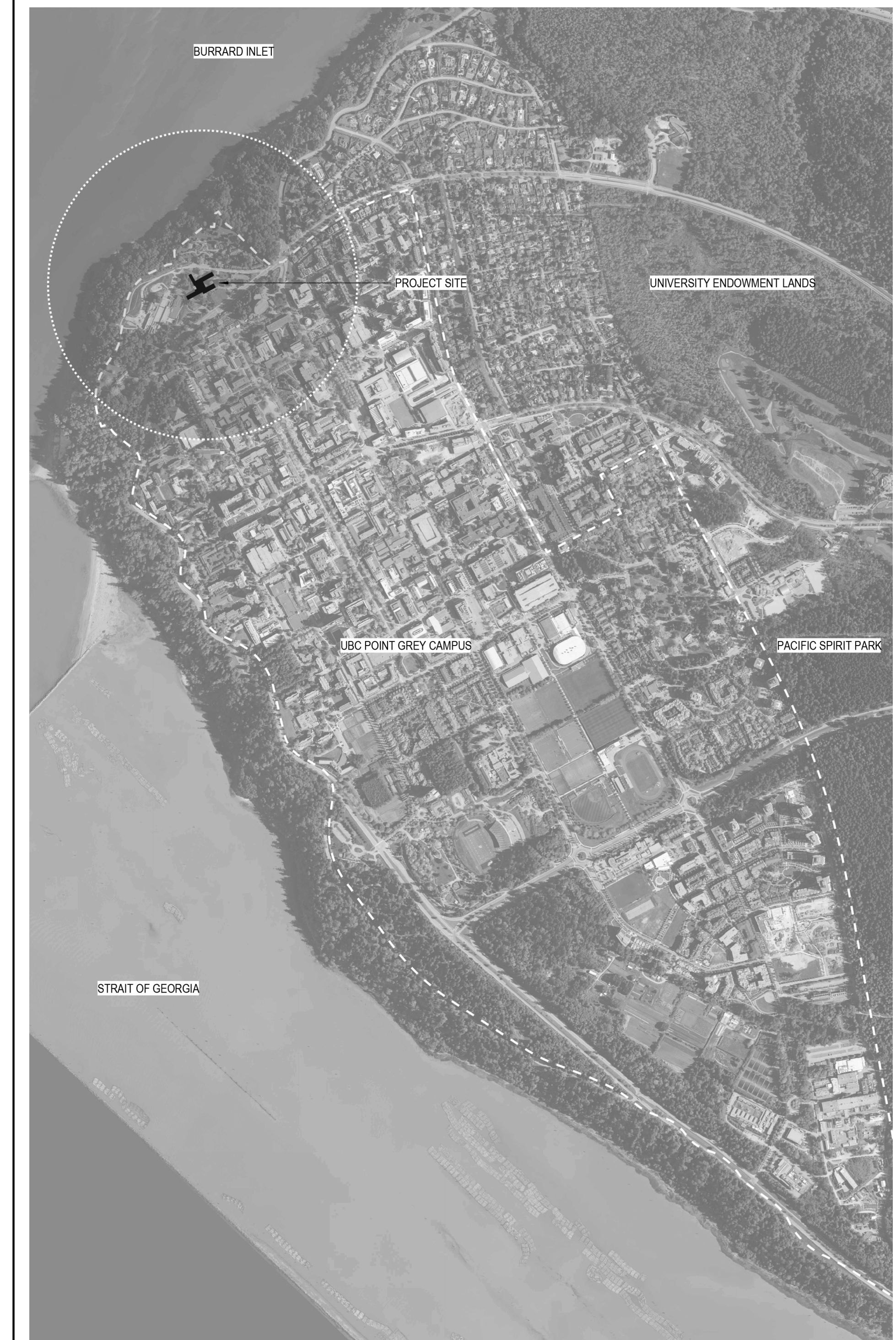
**DRAWING INDEX AND  
PROJECT INFORMATION**

SHEET NUMBER

**G00-01**

PROJECT INFORMATION

GROSS AREA SCHEDULE		PROJECT STATISTICS	
LEVEL	AREA	PROJECT NAME	UBC ANSO RENEWAL
LEVEL 00	1069.6 m <sup>2</sup>	CIVIC ADDRESS	6303 NORTH WEST MARINE DRIVE, VANCOUVER BCM V6T 1Z2
LEVEL 01	2768.6 m <sup>2</sup>	LEGAL DESCRIPTION	DISTRICT LOT 3044 GROUP 1 EW WESTMINSTER DISTRICT
LEVEL 02	2280.4 m <sup>2</sup>	SITE DIMENSIONS	78.5 m x 113.1 m (REFER TO SITE PLAN)
LEVEL 03	563.1 m <sup>2</sup>	TOTAL SITE AREA	4,708.2 m <sup>2</sup>
TOTAL	6681.7 m <sup>2</sup>	FOOTPRINT AREA	2,776.8 m <sup>2</sup>
		GROSS FLOOR AREA	6681.7 m <sup>2</sup>
		SITE COVERAGE	2,776.8 m <sup>2</sup> / 4,708.2 m <sup>2</sup> x 100 % = 59.0 %
		BUILDING HEIGHT	LEVEL 00 (NORTH WING) ± 67.700 m
			LEVEL 00 (EAST WING) ± 67.375 m
			LEVEL 01 (SOUTH & CENTRAL WINGS) ± 69.790 m
			LEVEL 01 (NORTH & EAST WINGS) ± 70.250 m
			LEVEL 01 (WEST WING) ± 70.470 m
			ROOF LEVEL (SOUTH WING) ± 73.035 m
			LEVEL 02 (WEST WING) ± 73.172 m
			LEVEL 02 (CENTRAL, SOUTH, NORTH & EAST WINGS) ± 73.120 m
			LEVEL 03 (WEST WING) ± 76.025 m
			ROOF LEVEL (CENTRAL, NORTH & EAST WINGS) ± 76.025 m
			ROOF LEVEL (WEST WINGS) ± 78.645 m
		BICYCLE PARKING	CLASS A 26
			CLASS B 24
		** FINAL BICYCLE PARKING COUNTS TO BE FINALIZED WITH DETAILED LANDSCAPE DESIGN	
		LOADING	ACCESS FROM CECIL GREEN PARK ROAD



SHEET LIST

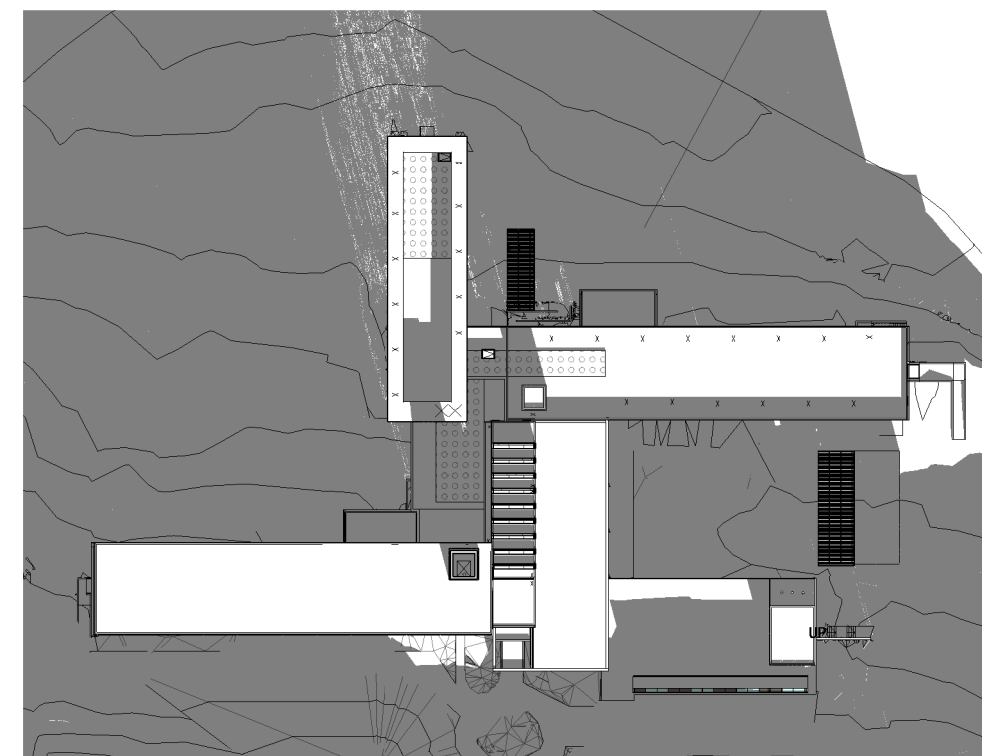
SHEET LIST		2024/09/20 ISSUED FOR SCHEMATIC DESIGN		2024/09/20 ISSUED FOR DEVELOPMENT PERMIT	
		SHEET NAME			
01-GENERAL					
G00-00	COVER SHEET				
G00-01	DRAWING INDEX AND PROJECT INFORMATION				
G05-01	SHADING ANALYSIS				
02-REFERENCE					
A00-01	ARCHITECTURAL ABBREVIATIONS, SYMBOLS AND GENERAL NOTES				
03-ARCHITECTURAL					
A01-01	CONTEXT PLAN				
A01-03	SITE PLAN				
A10-01	OVERALL FLOOR PLAN - LEVEL 00				
A10-02	OVERALL FLOOR PLAN - LEVEL 01				
A10-03	OVERALL FLOOR PLAN - LEVEL 02				
A10-04	OVERALL FLOOR PLAN - LEVEL 03				
A10-05	OVERALL FLOOR PLAN - ROOF LEVEL				
A20-01	OVERALL EXTERIOR ELEVATIONS				
A21-01	OVERALL BUILDING SECTIONS				



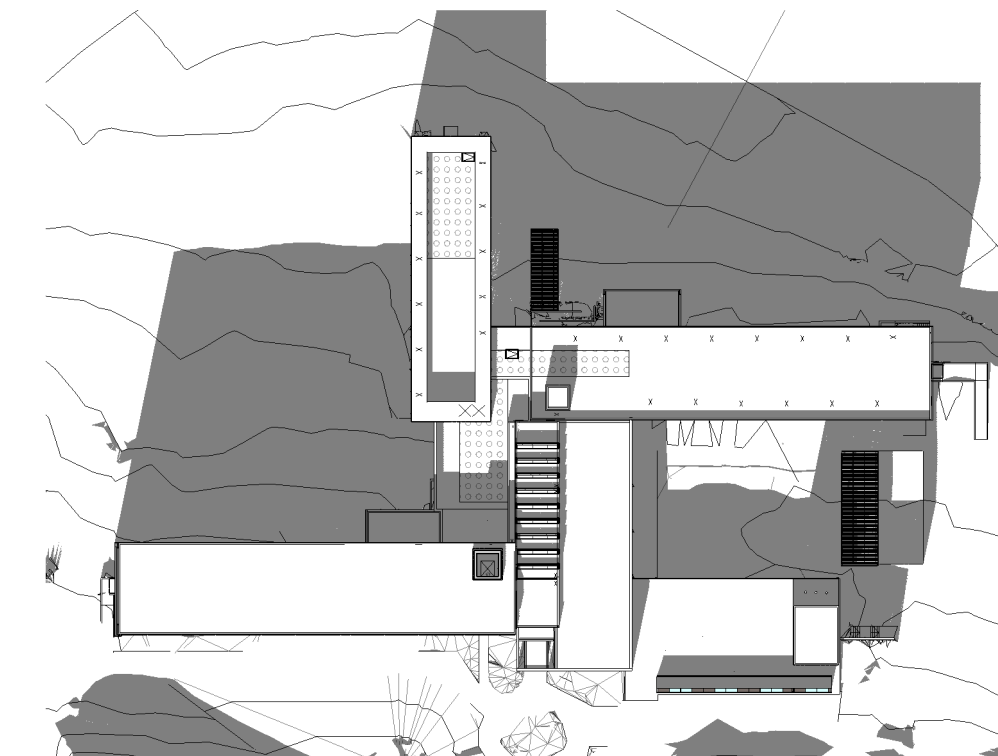
ISSUED FOR  
DEVELOPMENT PERMIT  
2024-09-20

ISSUED

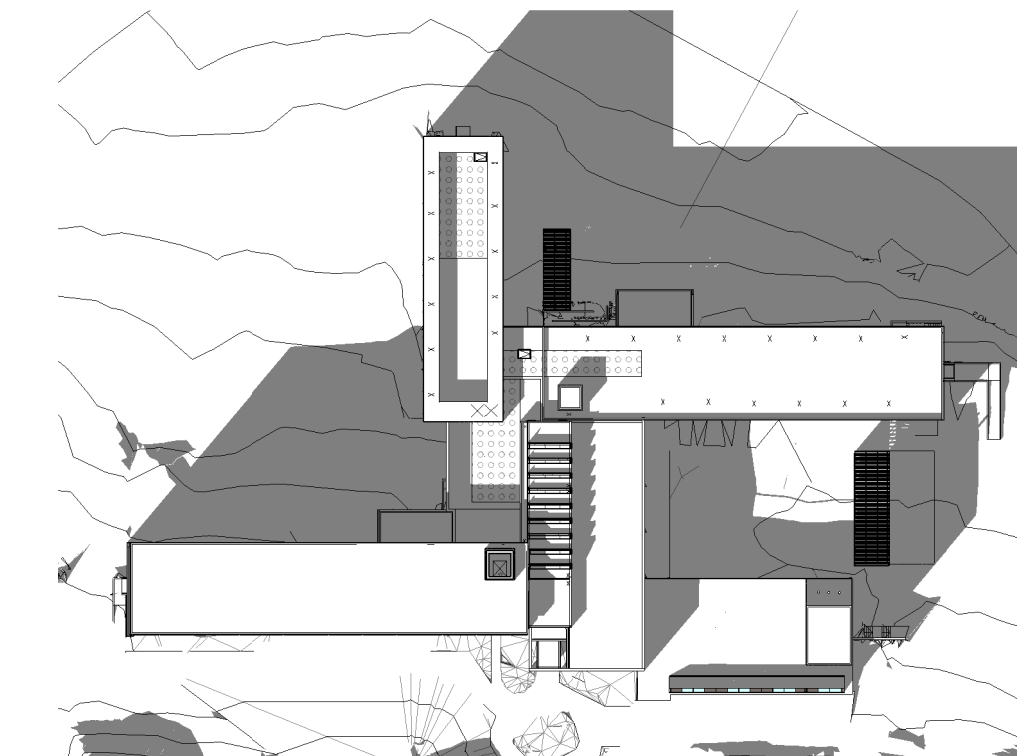
WINTER SOLSTICE  
DECEMBER 21



10 AM

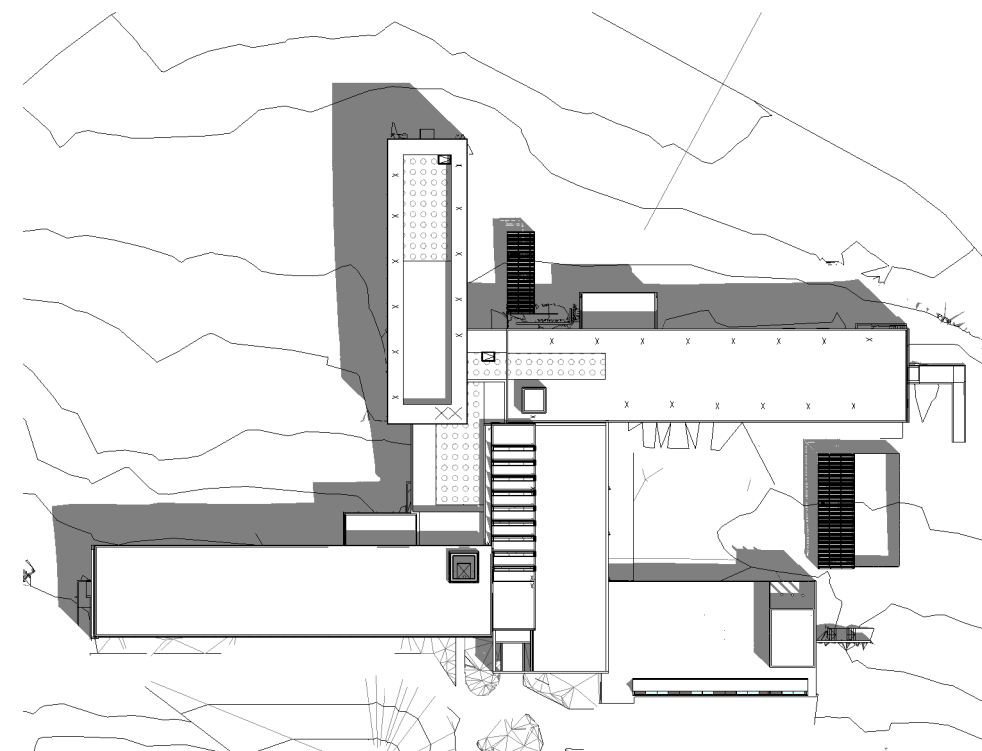


12 PM

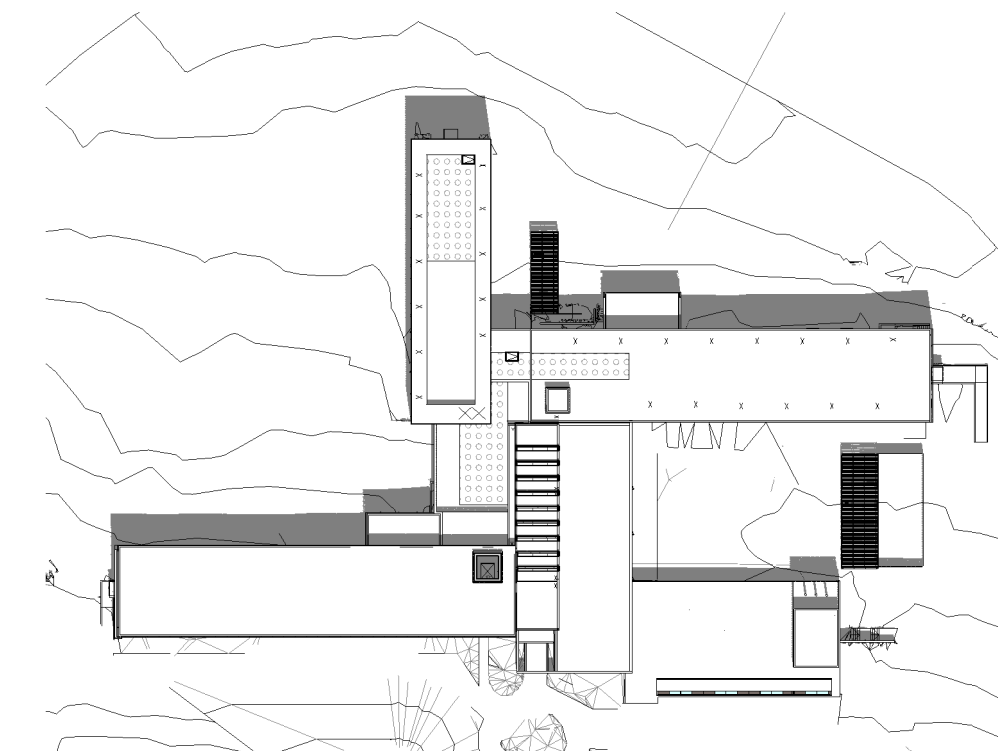


2 PM

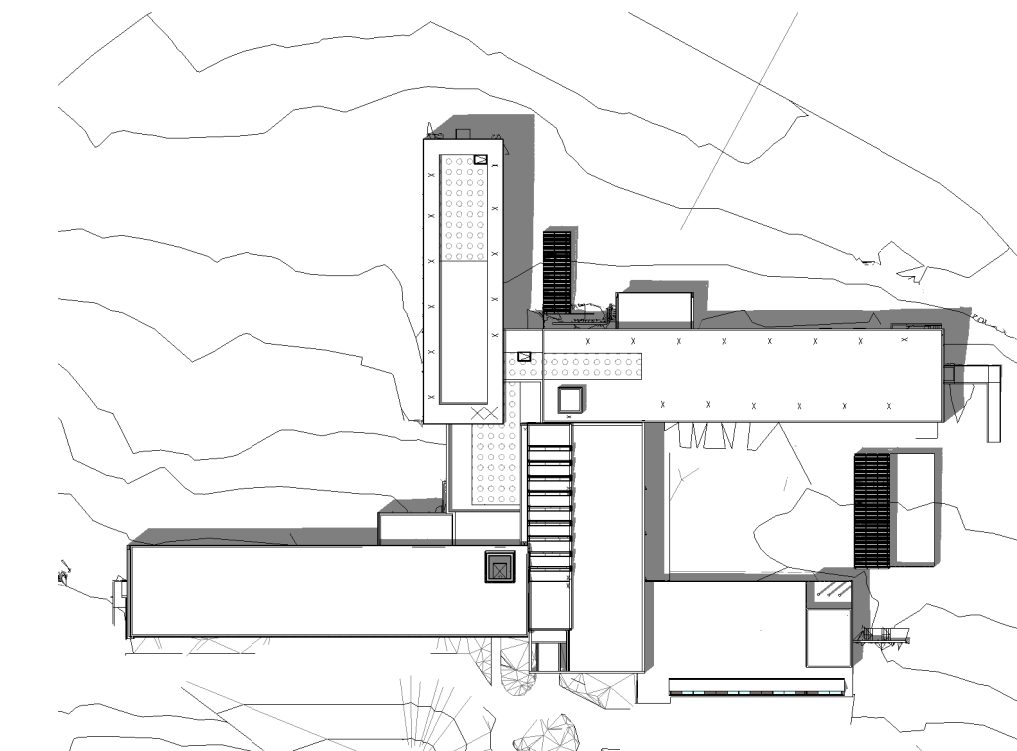
SUMMER SOLSTICE  
JUNE 21



10 AM

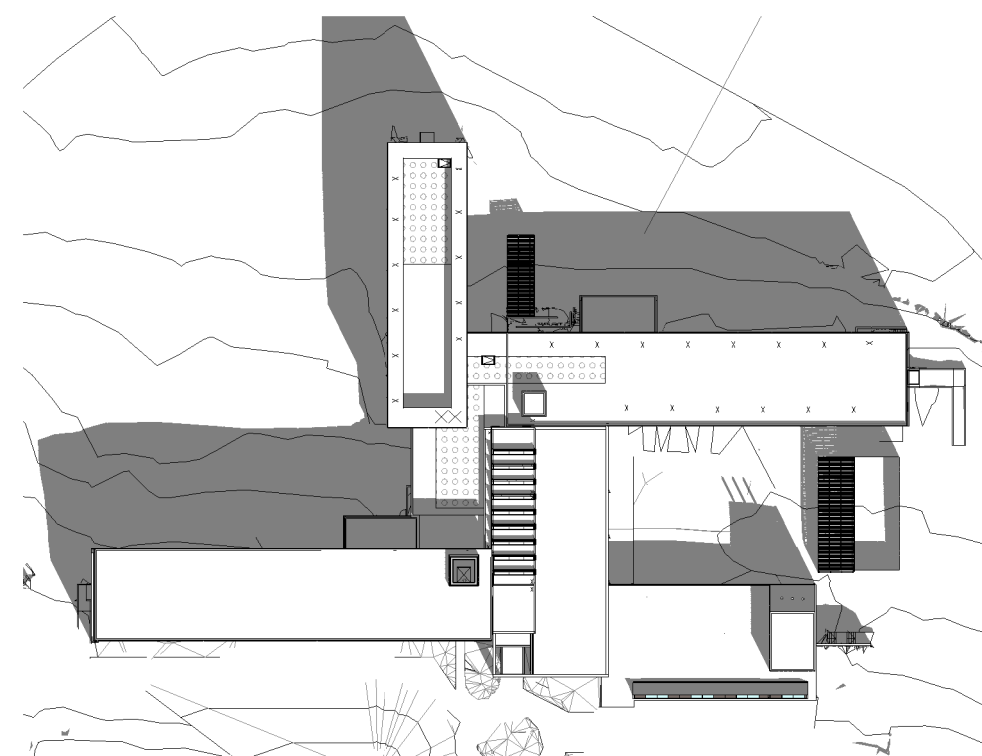


12 PM

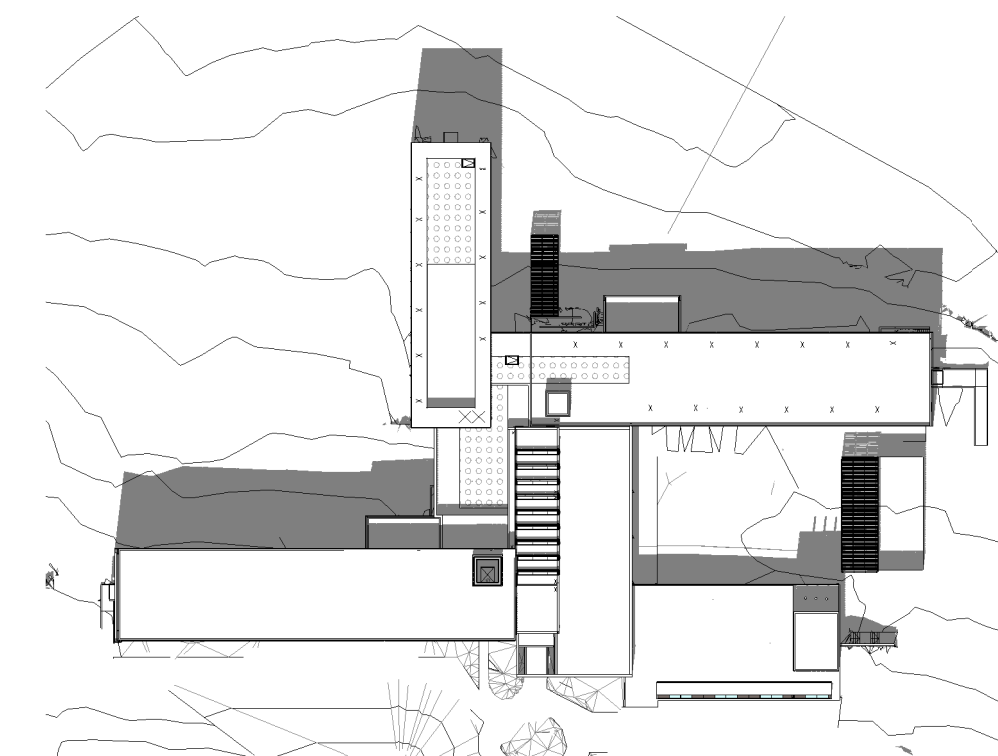


2 PM

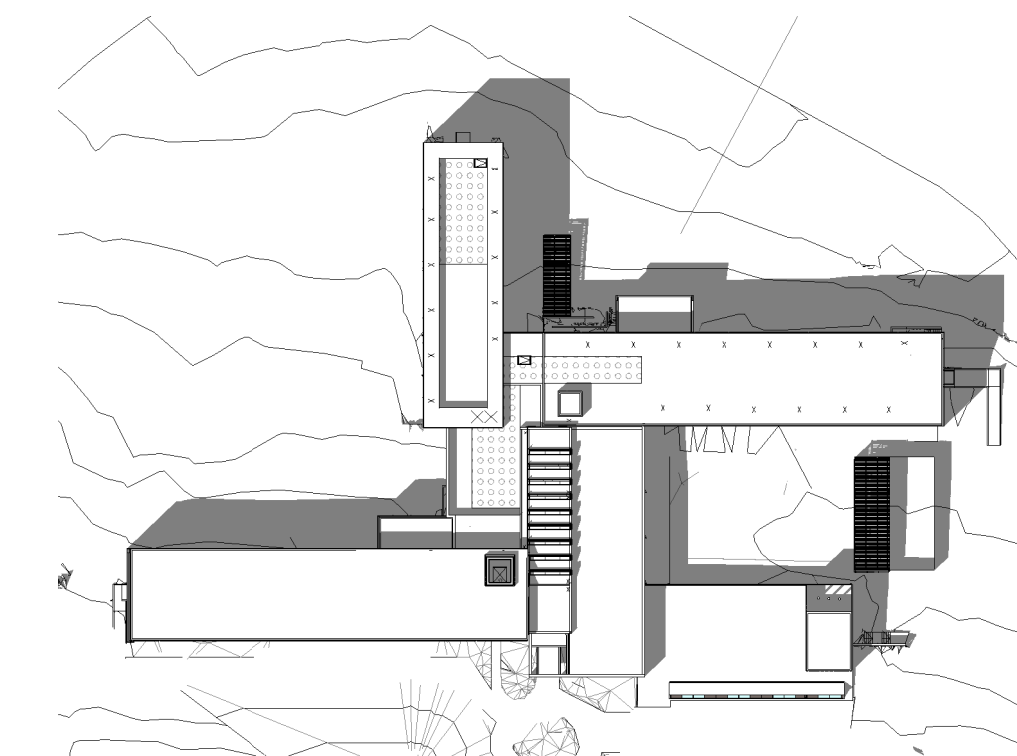
EQUINOX  
SEPTEMBER 21



10 AM

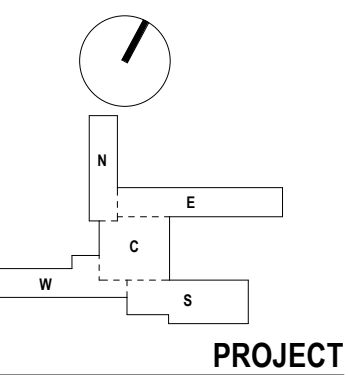


12 PM



2 PM

KEYPLAN



PROJECT

UBC ANSO RENEWAL  
6303 NW MARINE DRIVE,  
VANCOUVER BC, V6T 1Z1

PROJECT NUMBER  
412404

REVISIONS

TITLE

SHADING ANALYSIS

SHEET NUMBER

G05-01



ISSUED FOR DEVELOPMENT PERMIT 2024-09-20

ISSUED

ABBREVIATIONS

Table with 4 columns listing abbreviations for various building components like ANCHOR BOLT, ESCALATOR, EQUIPMENT, etc.

MATERIALS LEGEND

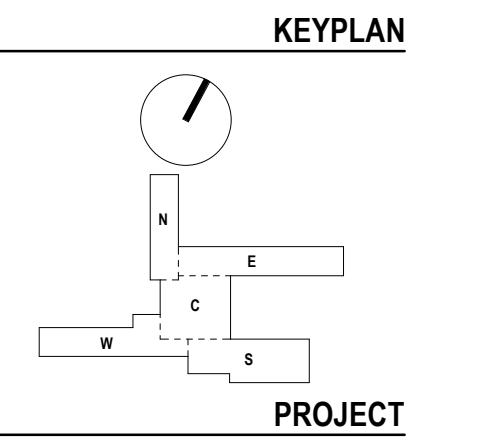
Table with 2 columns listing materials like SOIL, COMPACTED FILL, SAND, BITUMINOUS PAVING, etc., with corresponding hatch patterns.

SYMBOLS LEGEND

Diagrammatic legend for symbols including SHEET NUMBER (A10-00), WINDOW/LOUVER TAG, GLAZING TAG, MATERIAL TAG, ASSEMBLY TAG, INTERIOR ELEVATION TAG, WALL CONSTRUCTION KEY, NEW/EXISTING TRANSITION LINE, VERTICAL ELEVATION, SPOT ELEVATION, DATUM POINT, MATCH LINE, BREAK LINE, DRAWING TITLE, ROOM NAME AND NUMBER, DOOR TAG, RECESSED FIRE EXTINGUISHER CABINET/FIRE HOSE CABINET, EQUIPMENT DESIGNATION, DRAINS, KEYNOTE TAG, TEXT ANNOTATION, SHEET NOTE, DIFFUSER AND PANEL TAG, WASHROOM ACCESSORY TAG.

GENERAL NOTES

Notes regarding abbreviations, keyplan, project number (412404), and revisions.



UBC ANSO RENEWAL 6303 NW MARINE DRIVE, VANCOUVER BC, V6T 1Z1

PROJECT NUMBER 412404

REVISIONS

TITLE ARCHITECTURAL ABBREVIATIONS, SYMBOLS AND GENERAL NOTES SHEET NUMBER

A00-01

2024-09-20 2:27:46 PM Autodesk Docs://UBC-ANSO/UBC-ANSO-BLDG.vrt



**LEGEND**

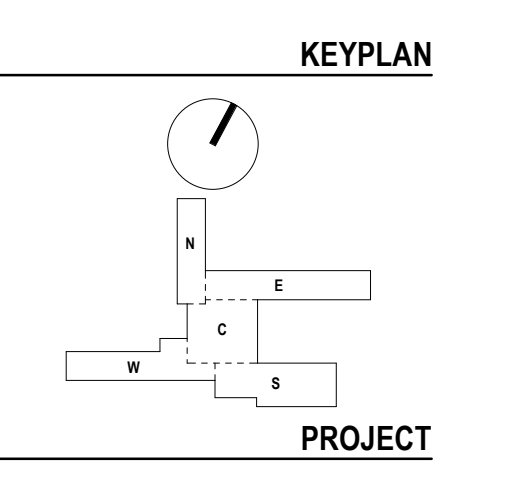
- PROPERTY LINE
- - - EASEMENT
- SETBACK
- EXTENT OF SCOPE OF WORK
- EXISTING BUILDINGS
- PROPOSED BUILDING
- ▲ PRIMARY BUILDING ACCESS
- △ SECONDARY BUILDING ACCESS
- △ VEHICULAR ACCESS

**Perkins&Will**



**ISSUED FOR DEVELOPMENT PERMIT**  
2024-09-20

**ISSUED**  
ISSUED FOR SCHEMATIC DESIGN 2024/07/05



**UBC ANSO RENEWAL**  
6303 NW MARINE DRIVE,  
VANCOUVER BC, V6T 1Z1

**PROJECT NUMBER**  
412404

**REVISIONS**

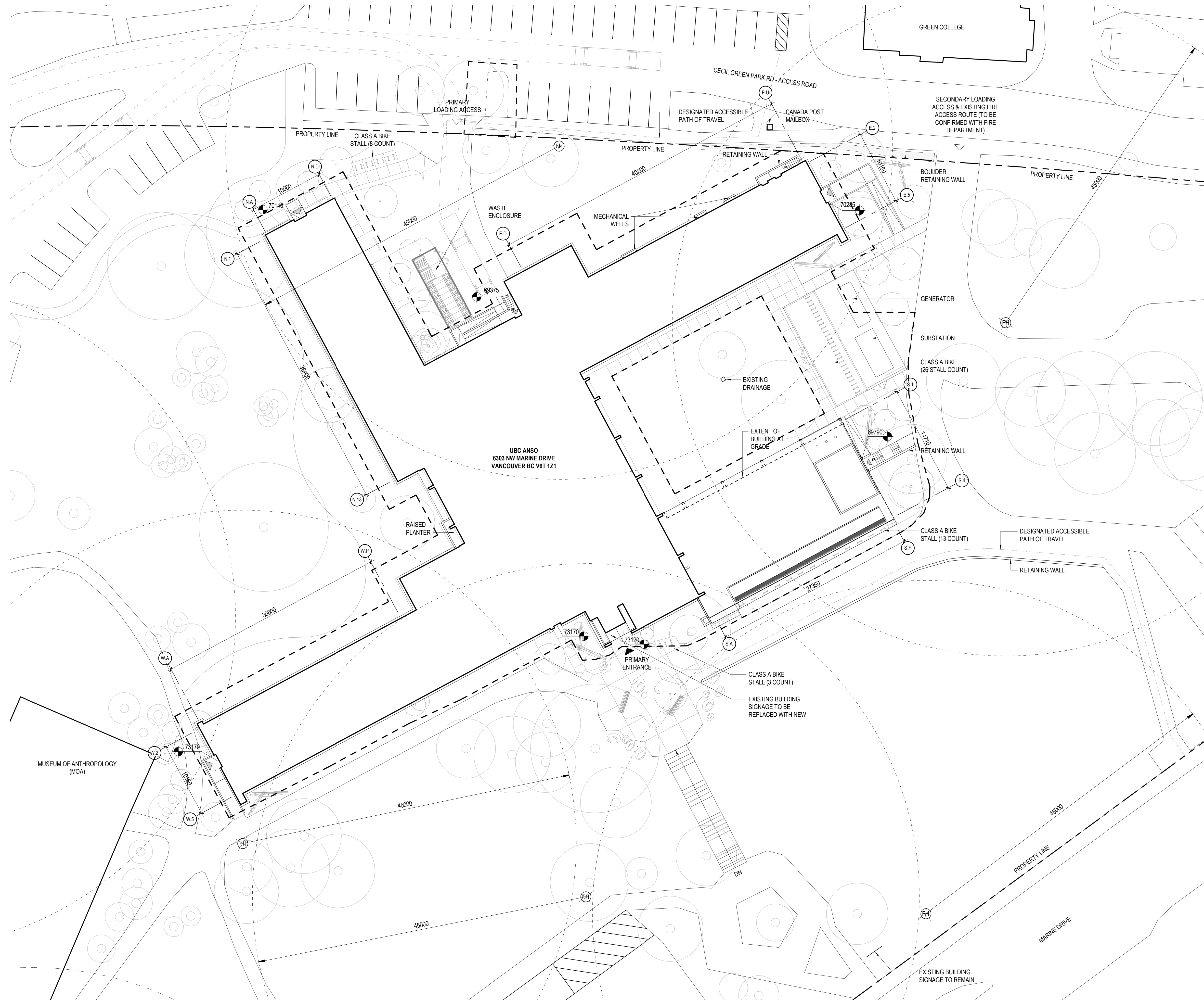
**TITLE**  
CONTEXT PLAN

**SHEET NUMBER**  
**A01-01**

© 2024 Perkins&Will

**1** CONTEXT PLAN  
1 : 1000

2024-09-20 2:27:51 PM Autodesk Docs://UBC-ANSO/UBC-ANSO-BLDG.rvt



**1 SITE PLAN**  
1:250

**GENERAL NOTES**

1. FIRE ACCESS ROUTE TO BE CONFIRMED WITH FIRE DEPARTMENT.

**LEGEND**

- PROPERTY LINE
- - - DESIGNATED ACCESSIBLE PATH OF TRAVEL
- - - FIRE HYDRANT REACH (45m)
- - - EXTENT OF SCOPE OF WORK
- EXISTING BUILDINGS
- ▲ PRIMARY BUILDING ACCESS
- △ SECONDARY BUILDING ACCESS
- ▽ VEHICULAR ACCESS
- (FH) FIRE HYDRANT
- E-1 BIKE RACK

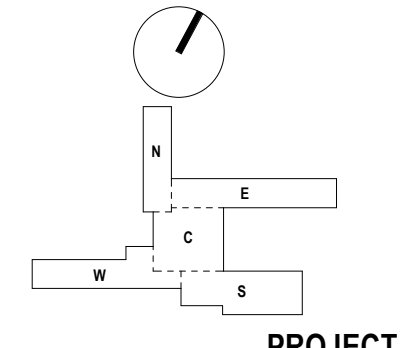
**Perkins&Will**



**ISSUED FOR DEVELOPMENT PERMIT**  
2024-09-20

**ISSUED**  
ISSUED FOR SCHEMATIC DESIGN 2024/07/05

**KEYPLAN**



**UBC ANSO RENEWAL**  
6303 NW MARINE DRIVE,  
VANCOUVER BC, V6T 1Z1

**PROJECT NUMBER**  
412404

**REVISIONS**

**TITLE**  
SITE PLAN

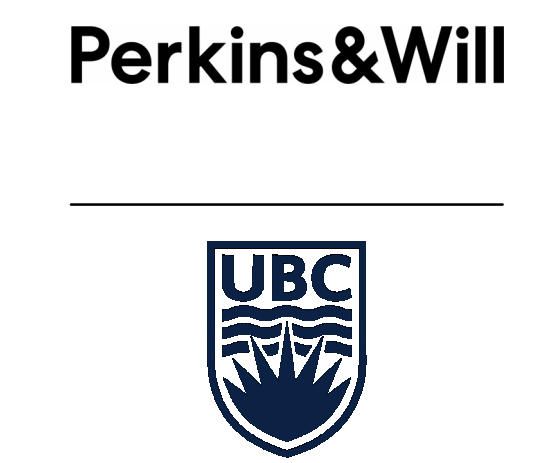
**SHEET NUMBER**  
**A01-03**

© 2024 Perkins&Will

ROOM SCHEDULE - NEW CONSTRUCTION - L00								
LEVEL	ROOM NO.	FUNCT. PRIO.	COMPONENT	ROOM NAME	FUNCT. PRIO.	NET AREA	DEPARTMENT	CATEGORY
LEVEL 00 E	0300		CIRC			Not Enclosed	CIRCULATION	CIRCULATION
LEVEL 00 E	030A	6.05		WASTE RECYCLING STATION ALCOVE	4.0 m <sup>2</sup>	Not Enclosed		
LEVEL 00 E	0301		ELEC		8.3 m <sup>2</sup>		SERVICES	SERVICES
LEVEL 00 E	0302		SPRINKLER		15.9 m <sup>2</sup>		SERVICES	SERVICES
LEVEL 00 E	0303	2.07.02		STUDENT CLUB STORAGE	0.0 m <sup>2</sup>	12.1 m <sup>2</sup>	SHARED SUPPORT SPACE	SHARED SUPPORT
LEVEL 00 E	0305	3.01		ANTHROPOLOGY LAB	120.4 m <sup>2</sup>	120.2 m <sup>2</sup>	ANTHROPOLOGY	INSTRUCTIONAL LAB
LEVEL 00 E	030A	3.01		STORAGE	120.4 m <sup>2</sup>	5.3 m <sup>2</sup>	ANTHROPOLOGY	INSTRUCTIONAL LAB
LEVEL 00 E	0312		MECH		30.2 m <sup>2</sup>		SERVICES	SERVICES
LEVEL 00 E	0313		MECH		104.2 m <sup>2</sup>		SERVICES	SERVICES
LEVEL 00 E	0316		MECH		74.9 m <sup>2</sup>		SERVICES	SERVICES
LEVEL 00 E	0330		MECH		16.8 m <sup>2</sup>		SERVICES	SERVICES
LEVEL 00 E	MECH		MECH		56.2 m <sup>2</sup>		SERVICES	SERVICES
LEVEL 00 E	MECH		MECH		8.9 m <sup>2</sup>		SERVICES	SERVICES
LEVEL 00 E	MECH		MECH		24.9 m <sup>2</sup>		SERVICES	SERVICES
LEVEL 00 E	ST3		STAR 3		21.7 m <sup>2</sup>		CIRCULATION	CIRCULATION
LEVEL 00 N	0305	6.05		WASTE RECYCLING STATION ALCOVE	2.1 m <sup>2</sup>		SERVICES	SERVICES
LEVEL 00 N	0400		CIRC		114.1 m <sup>2</sup>		CIRCULATION	CIRCULATION
LEVEL 00 N	0401		CAREGIVING ROOM		8.2 m <sup>2</sup>		SERVICES	WASHROOM/STO
LEVEL 00 N	0402	6.01		MAIN CUSTODIAL SUPPLY	20.0 m <sup>2</sup>		SERVICES	SERVICES
LEVEL 00 N	0403		END-OF-TRIP		8.4 m <sup>2</sup>		SERVICES	WASHROOM/STO
LEVEL 00 N	040A		SHOWERNIC		3.2 m <sup>2</sup>		SERVICES	WASHROOM/STO
LEVEL 00 N	040B		ACCESSIBLE SHOWER		8.0 m <sup>2</sup>		SERVICES	WASHROOM/STO
LEVEL 00 N	0404		EDT CIRC		4.9 m <sup>2</sup>		SERVICES	WASHROOM/STO
LEVEL 00 N	040A		ACCESSIBLE END-OF-TRIP		7.2 m <sup>2</sup>		SERVICES	WASHROOM/STO
LEVEL 00 N	040B		WC		2.2 m <sup>2</sup>		SERVICES	WASHROOM/STO
LEVEL 00 N	040C		WC		3.8 m <sup>2</sup>		SERVICES	WASHROOM/STO
LEVEL 00 N	040C	3.13		FORENSIC RESEARCH LAB	16.0 m <sup>2</sup>		ANTHROPOLOGY	RESEARCH LAB
LEVEL 00 N	040A	3.14		SECURE STORAGE	3.6 m <sup>2</sup>	2.2 m <sup>2</sup>	ANTHROPOLOGY	RESEARCH LAB
LEVEL 00 N	0406	6.02		SONAR ROOM	4.8 m <sup>2</sup>	7.2 m <sup>2</sup>	ARTS ASSIGNABLE SPACE	LAB SPACE
LEVEL 00 N	0407	3.38.02		OFFICE	11.0 m <sup>2</sup>	9.9 m <sup>2</sup>	ANTHROPOLOGY	RESEARCH SUPPORT
LEVEL 00 N	0408	5.01.06		OFFICE	11.0 m <sup>2</sup>	10.3 m <sup>2</sup>	ARTS ASSIGNABLE SPACE	OFFICES
LEVEL 00 N	0409	2.20.01		OFFICE	11.0 m <sup>2</sup>	9.9 m <sup>2</sup>	ANTHROPOLOGY	ACADEMIC OFFICES
LEVEL 00 N	0410	5.01.05		OFFICE	11.0 m <sup>2</sup>	10.3 m <sup>2</sup>	ARTS ASSIGNABLE SPACE	OFFICES
LEVEL 00 N	0411	3.38.01		OFFICE	11.0 m <sup>2</sup>	10.3 m <sup>2</sup>	ANTHROPOLOGY	RESEARCH SUPPORT
LEVEL 00 N	0412	5.01.04		OFFICE	11.0 m <sup>2</sup>	10.3 m <sup>2</sup>	ARTS ASSIGNABLE SPACE	OFFICES
LEVEL 00 N	0413	3.27.02		OFFICE	11.0 m <sup>2</sup>	10.3 m <sup>2</sup>	ANTHROPOLOGY	RESEARCH SUPPORT
LEVEL 00 N	0414	5.01.03		OFFICE	11.0 m <sup>2</sup>	10.3 m <sup>2</sup>	ARTS ASSIGNABLE SPACE	OFFICES
LEVEL 00 N	0415	3.27.01		OFFICE	11.0 m <sup>2</sup>	10.3 m <sup>2</sup>	ANTHROPOLOGY	RESEARCH SUPPORT
LEVEL 00 N	0416	5.01.02		OFFICE	11.0 m <sup>2</sup>	10.3 m <sup>2</sup>	ARTS ASSIGNABLE SPACE	OFFICES
LEVEL 00 N	0417	3.05		SHARED OFFICE	24.0 m <sup>2</sup>	20.7 m <sup>2</sup>	ANTHROPOLOGY	RESEARCH LAB
LEVEL 00 N	0418	5.01.01		OFFICE	11.0 m <sup>2</sup>	9.9 m <sup>2</sup>	ARTS ASSIGNABLE SPACE	OFFICES
LEVEL 00 N	ST1		STAR 1		13.9 m <sup>2</sup>		CIRCULATION	CIRCULATION

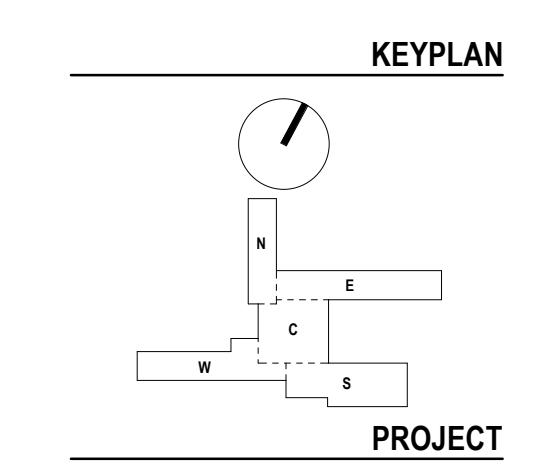
- GENERAL NOTES**
- FIREPROOF STRUCTURAL STEEL TO HAVE A FIRE RATING EQUAL TO OR GREATER THAN THAT OF THE ASSEMBLIES SUPPORTED.
  - FLOOR FINISH TRANSITIONS SHALL BE CENTRED ON THE DOOR PANEL, UNLESS OTHERWISE NOTED.
  - LOCATE DOOR FRAME JAMB OPENINGS 100mm FROM WALL INSIDE CORNERS, UNLESS OTHERWISE NOTED.
  - DIMENSIONS, FLOOR LEVEL TAGS & SPOT ELEVATIONS REFERENCE FACE OF FINISH, UNLESS OTHERWISE NOTED.
  - PROVIDE ACOUSTICALLY RATED PUTTY PADS AT DEVICES RECESS MOUNTED TO ACOUSTICALLY RATED GYP BD PARTITIONS. PROVIDE FIRE RATED PUTTY PADS AT DEVICES RECESS MOUNTED TO FIRE RATED GYP BD PARTITIONS.
  - EXISTING CAST-IN-PLACE CONCRETE TO REMAIN SHALL BE REHABILITATED, UNLESS OTHERWISE NOTED.

- EXISTING STRUCTURE
- PROPOSED STRUCTURE
- PROPOSED WALLS



ISSUED FOR DEVELOPMENT PERMIT  
2024-09-20

ISSUED FOR SCHEMATIC DESIGN  
2024/07/05



UBC ANSO RENEWAL  
6303 NW MARINE DRIVE,  
VANCOUVER BC, V6T 1Z1

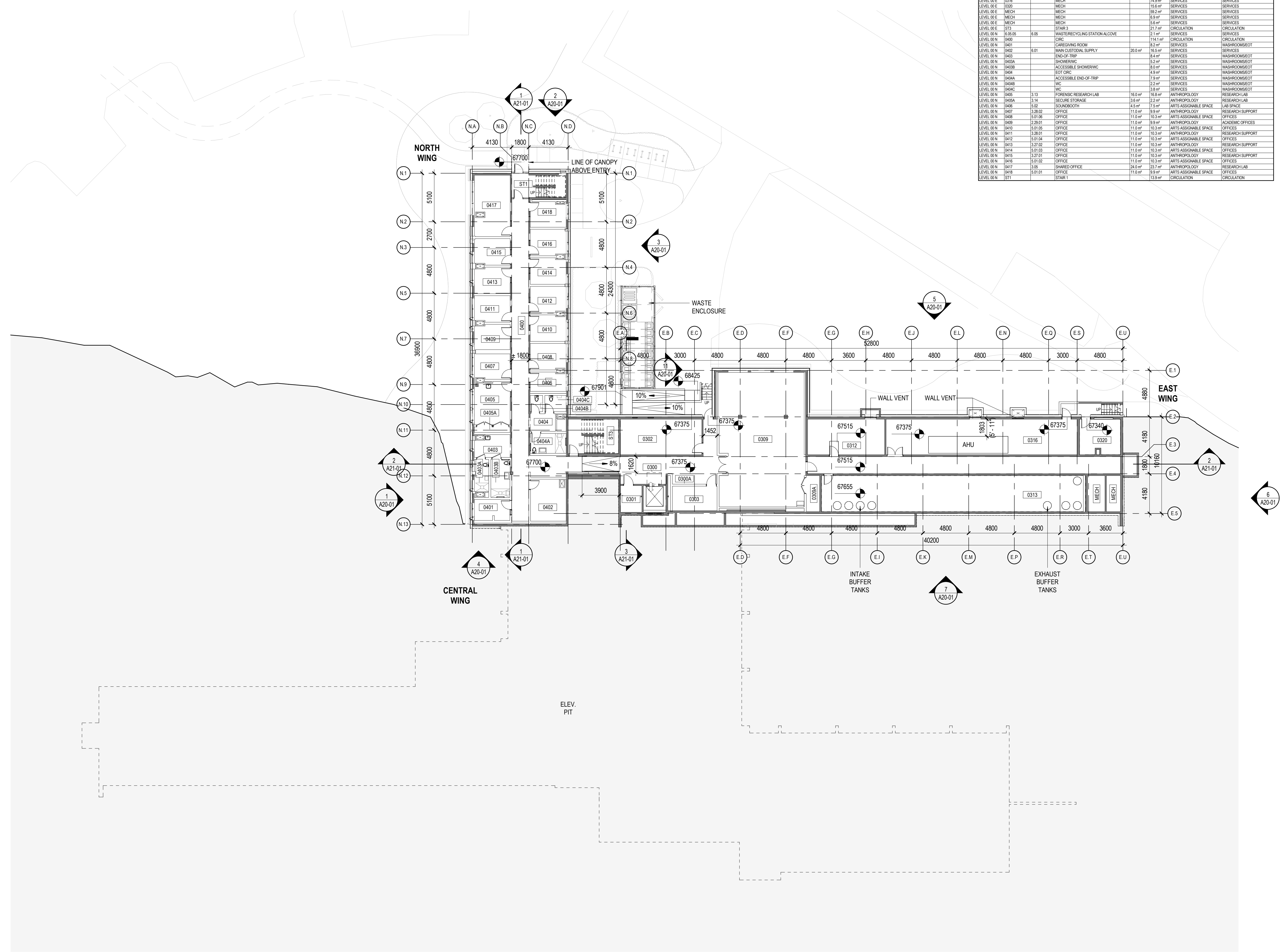
PROJECT NUMBER  
412404

REVISIONS

TITLE  
OVERALL FLOOR PLAN - LEVEL 00

SHEET NUMBER

A10-01



1 OVERALL FLOOR PLAN - LEVEL 00  
1:200





2024-09-20 2:28:06 PM Autodesk Docs://UBC - ANSO/UBC-ANSO-BLDG.rvt

ROOM SCHEDULE - NEW CONSTRUCTION - L02							
LEVEL	ROOM NO	FUNCT PRGCL COMPONENT	ROOM NAME	FUNCT PRGCL AREA	NET AREA	DEPARTMENT	CATEGORY
LEVEL 02 E	2200		CRIC	172.0	172.0		
LEVEL 02 E	2100		CRIC	111.0	111.0		
LEVEL 02 E	2280		CRIC	108.0	108.0		
LEVEL 02 E	2290		CRIC	105.0	105.0		
LEVEL 02 E	2300A	1.06.04	INFORMAL LEARNING SPACE	92.0	187.7	GENERAL TEACHING	INFORMAL LEARNING SPACE
LEVEL 02 E	2282	2.01.01	STUDENT CLUB ROOM	116.0	116.0	GENERAL TEACHING	STUDENT CLUB ROOM
LEVEL 02 E	2283		COMM	65.0	65.0	SERVICES	SERVICES
LEVEL 02 E	2284	2.41.06	OFFICE	11.0	11.0	ACADEMIC OFFICES	SHARED SUPPORT
LEVEL 02 E	2285		BLIC	8.0	8.0	ACADEMIC OFFICES	SHARED SUPPORT
LEVEL 02 E	2286	2.41.06	OFFICE	11.0	11.0	ACADEMIC OFFICES	SHARED SUPPORT
LEVEL 02 E	2287	2.38	SHARED OFFICE	16.0	16.0	ACADEMIC OFFICES	SHARED SUPPORT
LEVEL 02 E	2288	2.41.07	OFFICE	11.0	11.0	ACADEMIC OFFICES	SHARED SUPPORT
LEVEL 02 E	2289	2.41.07	OFFICE	11.0	11.0	ACADEMIC OFFICES	SHARED SUPPORT
LEVEL 02 E	2290	2.42	OFFICE	11.0	11.0	ACADEMIC OFFICES	SHARED SUPPORT
LEVEL 02 E	2291	2.28	OFFICE	11.0	11.0	ACADEMIC OFFICES	SHARED SUPPORT
LEVEL 02 E	2292	2.43.01	OFFICE	11.0	11.0	ACADEMIC OFFICES	SHARED SUPPORT
LEVEL 02 E	2293	2.24	OFFICE	11.0	11.0	ACADEMIC OFFICES	SHARED SUPPORT
LEVEL 02 E	2294	2.43.02	OFFICE	11.0	11.0	ACADEMIC OFFICES	SHARED SUPPORT
LEVEL 02 E	2295	2.22	MEETING/ADVISING ROOM	11.0	11.0	ACADEMIC OFFICES	SHARED SUPPORT
LEVEL 02 E	2296	2.44.01	OFFICE	11.0	11.0	ACADEMIC OFFICES	SHARED SUPPORT
LEVEL 02 E	2297	2.28	OFFICE	11.0	11.0	ACADEMIC OFFICES	SHARED SUPPORT
LEVEL 02 E	2298	2.44.02	OFFICE	11.0	11.0	ACADEMIC OFFICES	SHARED SUPPORT
LEVEL 02 E	2299	2.22	OFFICE	11.0	11.0	ACADEMIC OFFICES	SHARED SUPPORT
LEVEL 02 E	2300	2.42	OFFICE	11.0	11.0	ACADEMIC OFFICES	SHARED SUPPORT

ROOM SCHEDULE - NEW CONSTRUCTION - L02							
LEVEL	ROOM NO	FUNCT PRGCL COMPONENT	ROOM NAME	FUNCT PRGCL AREA	NET AREA	DEPARTMENT	CATEGORY
LEVEL 02 E	2301	2.40.27	OFFICE	11.0	11.0	SOCIOLOGY	ACADEMIC OFFICES
LEVEL 02 E	2302	2.40.27	OFFICE	11.0	11.0	SOCIOLOGY	ACADEMIC OFFICES
LEVEL 02 E	2303	2.40.27	OFFICE	11.0	11.0	SOCIOLOGY	ACADEMIC OFFICES
LEVEL 02 E	2304	2.40.27	OFFICE	11.0	11.0	SOCIOLOGY	ACADEMIC OFFICES
LEVEL 02 E	2305	2.21	OFFICE	11.0	11.0	ACADEMIC OFFICES	SHARED SUPPORT
LEVEL 02 E	2306	2.40.27	OFFICE	11.0	11.0	SOCIOLOGY	ACADEMIC OFFICES
LEVEL 02 E	2307	2.40.28	OFFICE	11.0	11.0	SOCIOLOGY	ACADEMIC OFFICES
LEVEL 02 E	2308	2.41.04	OFFICE	11.0	11.0	SOCIOLOGY	ACADEMIC OFFICES
LEVEL 02 E	2309	2.40.24	OFFICE	11.0	11.0	SOCIOLOGY	ACADEMIC OFFICES
LEVEL 02 E	2310	2.41.03	OFFICE	11.0	11.0	SOCIOLOGY	ACADEMIC OFFICES
LEVEL 02 E	2311	2.40.17	OFFICE	11.0	11.0	SOCIOLOGY	ACADEMIC OFFICES
LEVEL 02 E	2312	2.03.02	MEETING ROOM/LOA/KITCHENETTE	282.0	172.0	SHARED SUPPORT SPACE	SHARED SUPPORT
LEVEL 02 E	2313		CRIC	56.0	56.0		
LEVEL 02 E	2314		STAR 2	232.0	232.0		
LEVEL 02 E	2315		STAR 3	177.0	177.0		
LEVEL 02 E	2316		STAR 4	153.0	153.0		
LEVEL 02 E	2317		STAR 5	118.0	118.0		
LEVEL 02 N	2100A	1.06.07	INFORMAL LEARNING SPACE	92.0	187.7	GENERAL TEACHING	INFORMAL LEARNING SPACE
LEVEL 02 N	2100B	1.06.07	INFORMAL LEARNING SPACE	92.0	187.7	GENERAL TEACHING	INFORMAL LEARNING SPACE
LEVEL 02 N	2100C	1.06.06	INFORMAL LEARNING SPACE	92.0	187.7	GENERAL TEACHING	INFORMAL LEARNING SPACE
LEVEL 02 N	2100D	1.06.08	INFORMAL LEARNING SPACE	92.0	187.7	GENERAL TEACHING	INFORMAL LEARNING SPACE
LEVEL 02 N	2000	6.05	WATER/RECYCLING ALCOVE	4.0	4.0	SERVICES	SERVICES
LEVEL 02 N	2201		WC	21.0	21.0	SERVICES	WASHROOM/STO
LEVEL 02 N	2401	4.09	SHARED OFFICE	11.0	11.0	SOCIOLOGY	RESEARCH SUPPORT

ROOM SCHEDULE - NEW CONSTRUCTION - L02							
LEVEL	ROOM NO	FUNCT PRGCL COMPONENT	ROOM NAME	FUNCT PRGCL AREA	NET AREA	DEPARTMENT	CATEGORY
LEVEL 02 N	2404		WC	13.0	13.0	SERVICES	WASHROOM/STO
LEVEL 02 N	2419	4.10	SHARED OFFICE	18.0	18.0	SOCIOLOGY	RESEARCH SUPPORT
LEVEL 02 W	2001	1.03.01	50-SEAT CLASSROOM	130.0	130.0	GENERAL TEACHING	GENERAL TEACHING SPACE
LEVEL 02 W	2009	1.01.01	24-SEAT CLASSROOM	82.0	82.0	GENERAL TEACHING	GENERAL TEACHING SPACE
LEVEL 02 W	2009	1.02.02	40-SEAT CLASSROOM	150.0	150.0	GENERAL TEACHING	GENERAL TEACHING SPACE
LEVEL 02 W	2101	2.04.06	MAIL PRINTER SHARED	26.0	26.0	SHARED SUPPORT SPACE	SHARED SUPPORT
LEVEL 02 W	2103	2.09	STAFF LOUNGE	20.0	20.0	SHARED SUPPORT SPACE	SHARED SUPPORT
LEVEL 02 W	2202	1.05	BROKEN FURNITURE STORAGE	4.0	4.0	GENERAL TEACHING	GENERAL TEACHING SPACE
LEVEL 02 W	2204		BLIC	7.0	7.0	ACADEMIC OFFICES	SHARED SUPPORT
LEVEL 02 W	2205		WC	22.0	22.0	SERVICES	WASHROOM/STO
LEVEL 02 W	2206		COMM	16.0	16.0	SERVICES	SERVICES
LEVEL 02 W	2207	2.11	DEPARTMENT OFFICE	19.0	19.0	ACADEMIC OFFICES	ACADEMIC OFFICES
LEVEL 02 W	2208	2.21	LARGE MEETING ROOM	90.0	73.0	SHARED SUPPORT SPACE	SHARED SUPPORT
LEVEL 02 W	2209	2.29.11	OFFICE	11.0	11.0	ACADEMIC OFFICES	ACADEMIC OFFICES
LEVEL 02 W	2211	2.28.12	OFFICE	11.0	11.0	ACADEMIC OFFICES	ACADEMIC OFFICES
LEVEL 02 W	2212	2.30.01	INTERVIEW ROOM	7.0	7.0	ACADEMIC OFFICES	ACADEMIC OFFICES
LEVEL 02 W	2213		OFFICE	11.0	11.0	ACADEMIC OFFICES	ACADEMIC OFFICES
LEVEL 02 W	2214	2.29.06	OFFICE	11.0	11.0	ACADEMIC OFFICES	ACADEMIC OFFICES
LEVEL 02 W	2215	2.29.14	OFFICE	11.0	11.0	ACADEMIC OFFICES	ACADEMIC OFFICES
LEVEL 02 W	2216	2.29.08	OFFICE	11.0	11.0	ACADEMIC OFFICES	ACADEMIC OFFICES
LEVEL 02 W	2217	2.29.15	OFFICE	11.0	11.0	ACADEMIC OFFICES	ACADEMIC OFFICES
LEVEL 02 W	2218	2.29.07	OFFICE	11.0	11.0	ACADEMIC OFFICES	ACADEMIC OFFICES
LEVEL 02 W	2219	2.29.16	OFFICE	11.0	11.0	ACADEMIC OFFICES	ACADEMIC OFFICES
LEVEL 02 W	2220	2.29.05	OFFICE	11.0	11.0	ACADEMIC OFFICES	ACADEMIC OFFICES
LEVEL 02 W	2221	2.29.17	OFFICE	11.0	11.0	ACADEMIC OFFICES	ACADEMIC OFFICES
LEVEL 02 W	2222	2.29.05	OFFICE	11.0	11.0	ACADEMIC OFFICES	ACADEMIC OFFICES
LEVEL 02 W	2223	2.29.18	OFFICE	11.0	11.0	ACADEMIC OFFICES	ACADEMIC OFFICES
LEVEL 02 W	2224	2.29.04	OFFICE	11.0	11.0	ACADEMIC OFFICES	ACADEMIC OFFICES
LEVEL 02 W	2225	2.29.19	OFFICE	11.0	11.0	ACADEMIC OFFICES	ACADEMIC OFFICES
LEVEL 02 W	2226	2.29.03	OFFICE	11.0	11.0	ACADEMIC OFFICES	ACADEMIC OFFICES
LEVEL 02 W	2227	2.29.20	OFFICE	11.0	11.0	ACADEMIC OFFICES	ACADEMIC OFFICES
LEVEL 02 W	2228	2.29.02	OFFICE	11.0	11.0	ACADEMIC OFFICES	ACADEMIC OFFICES
LEVEL 02 W	2229	2.28.10	OFFICE	11.0	11.0	ACADEMIC OFFICES	ACADEMIC OFFICES
LEVEL 02 W	2230	2.30.02	MEETING ROOM/LOA/KITCHENETTE	282.0	172.0	SHARED SUPPORT SPACE	SHARED SUPPORT
LEVEL 02 W	2402	6.03.02	CUSTOMAL	9.3	9.3	SERVICES	SERVICES
LEVEL 02 W	2403	2.40.28	OFFICE	11.0	11.0	SOCIOLOGY	ACADEMIC OFFICES
LEVEL 02 W	2404	2.40.29	OFFICE	11.0	11.0	SOCIOLOGY	ACADEMIC OFFICES
LEVEL 02 W	2405	2.28	SOCIOLOGY ADMIN STORAGE	11.0	13.3	SOCIOLOGY	ACADEMIC OFFICES
LEVEL 02 W	2407	2.40.30	OFFICE	11.0	11.0	SOCIOLOGY	ACADEMIC OFFICES
LEVEL 02 W	2408	2.40.26	OFFICE	11.0	11.0	SOCIOLOGY	ACADEMIC OFFICES
LEVEL 02 W	2409	2.40.31	OFFICE	11.0	11.0	SOCIOLOGY	ACADEMIC OFFICES
LEVEL 02 W	2410	2.40.35	OFFICE	11.0	11.0	SOCIOLOGY	ACADEMIC OFFICES
LEVEL 02 W	2411	2.40.32	OFFICE	11.0	11.0	SOCIOLOGY	ACADEMIC OFFICES
LEVEL 02 W	2412	2.40.24	OFFICE	11.0	11.0	SOCIOLOGY	ACADEMIC OFFICES
LEVEL 02 W	2413	2.41.01	OFFICE	11.0	11.0	SOCIOLOGY	ACADEMIC OFFICES
LEVEL 02 W	2414	2.40.23	OFFICE	11.0	11.0	SOCIOLOGY	ACADEMIC OFFICES
LEVEL 02 W	2415	2.41.02	OFFICE	11.0	11.0	SOCIOLOGY	ACADEMIC OFFICES
LEVEL 02 W	2416	2.40.22	OFFICE	11.0	11.0	SOCIOLOGY	ACADEMIC OFFICES
LEVEL 02 W	2417	2.41.03	OFFICE	11.0	11.0	SOCIOLOGY	ACADEMIC OFFICES
LEVEL 02 W	2418	2.40.21	OFFICE	11.0	11.0	SOCIOLOGY	ACADEMIC OFFICES
LEVEL 02 W	2420	2.40.20	OFFICE	11.0	11.0	SOCIOLOGY	ACADEMIC OFFICES
LEVEL 02 W	2421	2.10.03	KITCHENETTE/WORKROOM	93.0	117.0	SHARED SUPPORT SPACE	SHARED SUPPORT
LEVEL 02 W	MC		MECH				

GENERAL NOTES

- FIREPROOF STRUCTURAL STEEL TO HAVE A FIRE RATING EQUAL TO OR GREATER THAN THAT OF THE ASSEMBLIES SUPPORTED.
- FLOOR FINISH TRANSITIONS SHALL BE CENTRED ON THE DOOR PANEL, UNLESS OTHERWISE NOTED.
- LOCATE DOOR FRAME JAMB OPENINGS 100mm FROM WALL INSIDE CORNERS, UNLESS OTHERWISE NOTED.
- DIMENSIONS, FLOOR LEVEL TAGS & SPOT ELEVATIONS REFERENCE FACE OF FINISH, UNLESS OTHERWISE NOTED.
- PROVIDE ACOUSTICALLY RATED PUTTY PADS AT DEVICES RECESS MOUNTED TO ACOUSTICALLY RATED GYP BD PARTITIONS. PROVIDE FIRE RATED PUTTY PADS AT DEVICES RECESS MOUNTED TO FIRE RATED GYP BD PARTITIONS.
- EXISTING CAST-IN-PLACE CONCRETE TO REMAIN SHALL BE REHABILITATED, UNLESS OTHERWISE NOTED.

- EXISTING STRUCTURE
- PROPOSED STRUCTURE
- PROPOSED WALLS

Perkins&Will



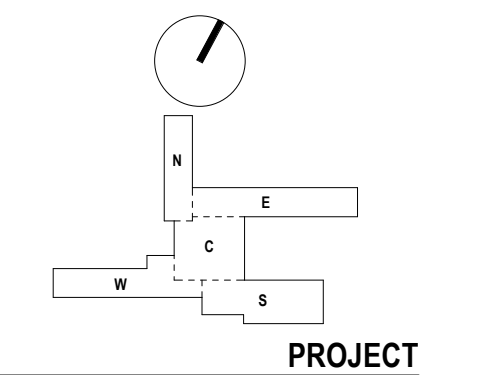
ISSUED FOR DEVELOPMENT PERMIT 2024-09-20

ISSUED FOR SCHEMATIC DESIGN 2024/07/05

ISSUED

ISSUED FOR SCHEMATIC DESIGN 2024/07/05

KEYPLAN



UBC ANSO RENEWAL 6303 NW MARINE DRIVE, VANCOUVER BC, V6T 1Z1

PROJECT NUMBER 412404

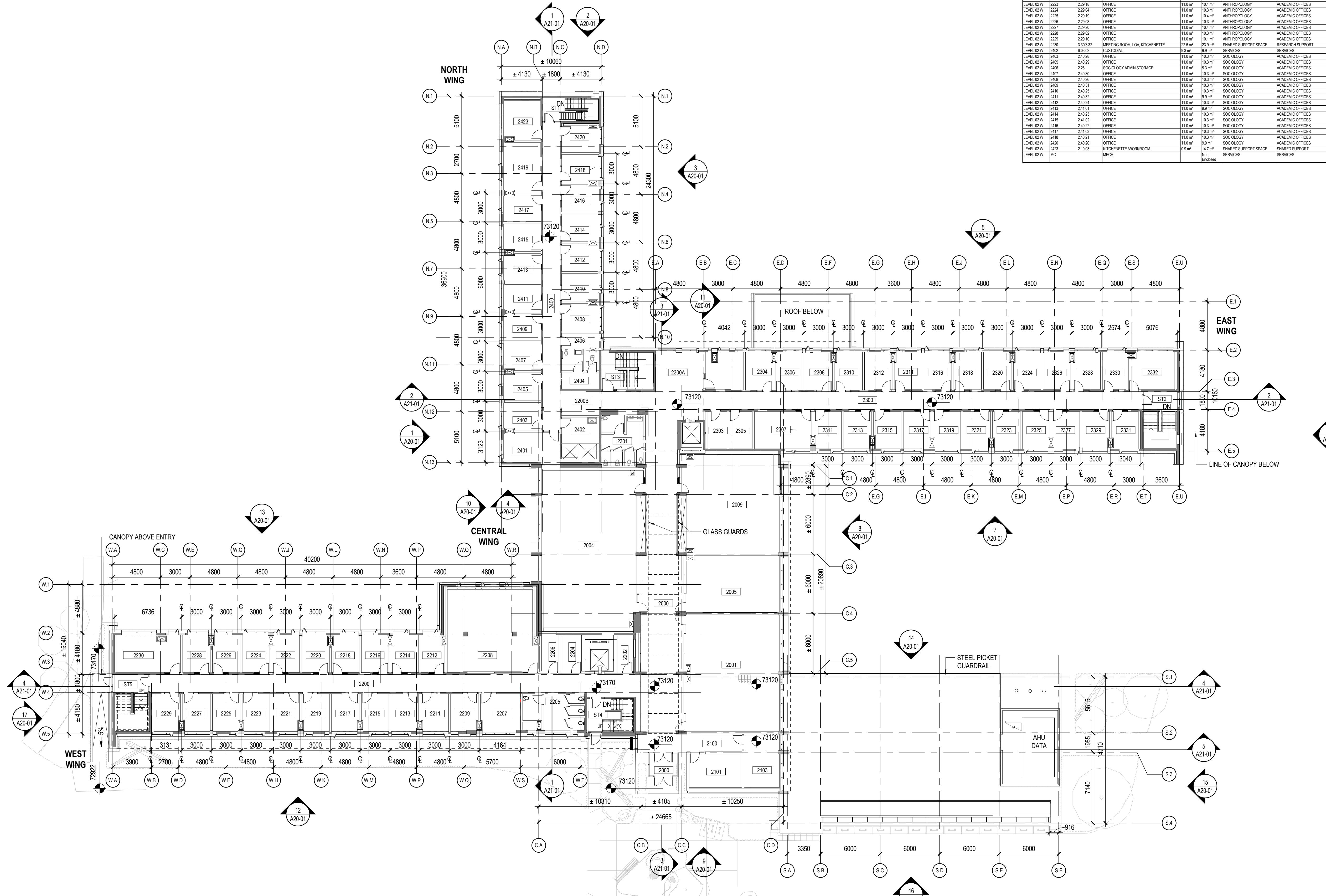
REVISIONS

TITLE OVERALL FLOOR PLAN - LEVEL 02

SHEET NUMBER

A10-03

© 2024 Perkins&Will

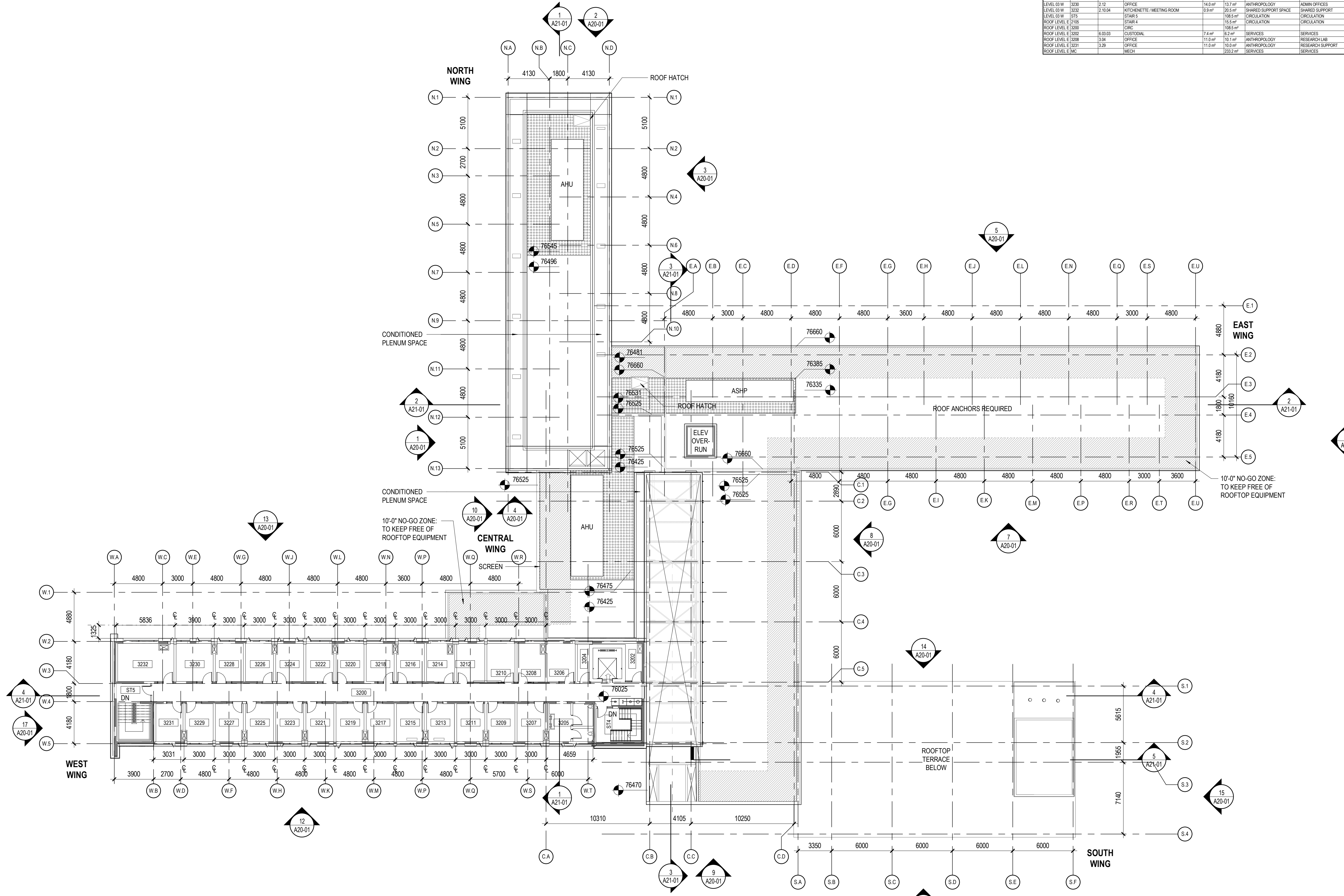
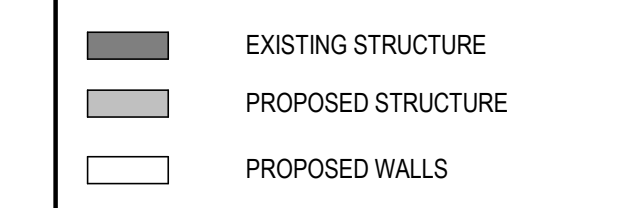


1 OVERALL FLOOR PLAN - LEVEL 02 1:200

2024-09-20 2:28:15 PM Autodesk Docs://UBC-ANSO/UBC-ANSO-BLDG.rvt

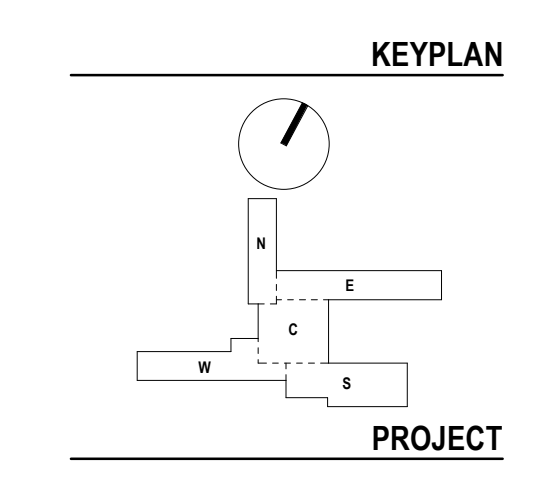
ROOM SCHEDULE - NEW CONSTRUCTION - L03							
LEVEL	ROOM NO.	FUNCT. PRGCL COMPONENT	ROOM NAME	FUNCT. PRGCL AREA	NET AREA	DEPARTMENT	CATEGORY
LEVEL 03 W	108.11		WASTE RECYCLING STATION ALCOVE		2.4 m <sup>2</sup>	SERVICES	SERVICES
LEVEL 03 W	3204		ELEC		4.9 m <sup>2</sup>	SERVICES	SERVICES
LEVEL 03 W	3205		INC		16.3 m <sup>2</sup>	SERVICES	WASHROOM/REST
LEVEL 03 W	3206	2.29.21	OFFICE		11.0 m <sup>2</sup>	ANTHROPOLOGY	ACADEMIC OFFICES
LEVEL 03 W	3207	2.29.21	OFFICE		11.0 m <sup>2</sup>	ANTHROPOLOGY	ACADEMIC OFFICES
LEVEL 03 W	3208	2.29.22	OFFICE		11.0 m <sup>2</sup>	ANTHROPOLOGY	ACADEMIC OFFICES
LEVEL 03 W	3210	2.29.21	OFFICE		11.0 m <sup>2</sup>	ANTHROPOLOGY	ACADEMIC OFFICES
LEVEL 03 W	3211	2.29.21	OFFICE		11.0 m <sup>2</sup>	ANTHROPOLOGY	ACADEMIC OFFICES
LEVEL 03 W	3212	2.29.24	OFFICE		11.0 m <sup>2</sup>	ANTHROPOLOGY	ACADEMIC OFFICES
LEVEL 03 W	3213	2.29.22	OFFICE		11.0 m <sup>2</sup>	ANTHROPOLOGY	ACADEMIC OFFICES
LEVEL 03 W	3214	2.29.23	OFFICE		11.0 m <sup>2</sup>	ANTHROPOLOGY	ACADEMIC OFFICES
LEVEL 03 W	3215	2.29.23	OFFICE		11.0 m <sup>2</sup>	ANTHROPOLOGY	ACADEMIC OFFICES
LEVEL 03 W	3216	2.29.24	OFFICE		11.0 m <sup>2</sup>	ANTHROPOLOGY	ACADEMIC OFFICES
LEVEL 03 W	3217	2.29.28	OFFICE		11.0 m <sup>2</sup>	ANTHROPOLOGY	ACADEMIC OFFICES
LEVEL 03 W	3218	2.29.23	OFFICE		11.0 m <sup>2</sup>	ANTHROPOLOGY	ACADEMIC OFFICES
LEVEL 03 W	3219	2.29.22	OFFICE		11.0 m <sup>2</sup>	ANTHROPOLOGY	ACADEMIC OFFICES
LEVEL 03 W	3220	2.29.22	OFFICE		11.0 m <sup>2</sup>	ANTHROPOLOGY	ACADEMIC OFFICES
LEVEL 03 W	3221	2.29.22	OFFICE		11.0 m <sup>2</sup>	ANTHROPOLOGY	ACADEMIC OFFICES
LEVEL 03 W	3222	2.29.23	OFFICE		11.0 m <sup>2</sup>	ANTHROPOLOGY	ACADEMIC OFFICES
LEVEL 03 W	3223	2.18	OFFICE		11.0 m <sup>2</sup>	ANTHROPOLOGY	ADMIN OFFICES
LEVEL 03 W	3224	2.29.21	OFFICE		11.0 m <sup>2</sup>	ANTHROPOLOGY	ACADEMIC OFFICES
LEVEL 03 W	3225	2.15	OFFICE		11.0 m <sup>2</sup>	ANTHROPOLOGY	ADMIN OFFICES
LEVEL 03 W	3226	2.29	OFFICE		11.0 m <sup>2</sup>	ANTHROPOLOGY	ACADEMIC OFFICES
LEVEL 03 W	3227	2.14	OFFICE		11.0 m <sup>2</sup>	ANTHROPOLOGY	ADMIN OFFICES
LEVEL 03 W	3228	2.29.23	OFFICE		11.0 m <sup>2</sup>	ANTHROPOLOGY	ACADEMIC OFFICES
LEVEL 03 W	3229	2.13	OFFICE		11.0 m <sup>2</sup>	ANTHROPOLOGY	ADMIN OFFICES
LEVEL 03 W	3230	2.12	OFFICE		14.0 m <sup>2</sup>	ANTHROPOLOGY	ADMIN OFFICES
LEVEL 03 W	3232	2.10.04	KITCHENETTE / MEETING ROOM		0.9 m <sup>2</sup>	SHARED SUPPORT SPACE	SHARED SUPPORT
LEVEL 03 W	325		STAIRS		108.9 m <sup>2</sup>	CIRCULATION	CIRCULATION
ROOF LEVEL E 2105			STAIR 4		15.5 m <sup>2</sup>	CIRCULATION	CIRCULATION
ROOF LEVEL E 2200			CRS		109.5 m <sup>2</sup>		
ROOF LEVEL E 2202			OPTIONAL		7.4 m <sup>2</sup>	SERVICES	SERVICES
ROOF LEVEL E 2208	3.04		OFFICE		11.0 m <sup>2</sup>	ANTHROPOLOGY	RESEARCH LAB
ROOF LEVEL E 2311	3.08		OFFICE		11.0 m <sup>2</sup>	ANTHROPOLOGY	RESEARCH SUPPORT
ROOF LEVEL E INC			MECH		293.2 m <sup>2</sup>	SERVICES	SERVICES

- GENERAL NOTES**
- FIREPROOF STRUCTURAL STEEL TO HAVE A FIRE RATING EQUAL TO OR GREATER THAN THAT OF THE ASSEMBLIES SUPPORTED.
  - FLOOR FINISH TRANSITIONS SHALL BE CENTRED ON THE DOOR PANEL, UNLESS OTHERWISE NOTED.
  - LOCATE DOOR FRAME JAMB OPENINGS 100mm FROM WALL INSIDE CORNERS, UNLESS OTHERWISE NOTED.
  - DIMENSIONS, FLOOR LEVEL TAGS & SPOT ELEVATIONS REFERENCE FACE OF FINISH, UNLESS OTHERWISE NOTED.
  - PROVIDE ACOUSTICALLY RATED PUTTY PADS AT DEVICES RECESS MOUNTED TO ACOUSTICALLY RATED GYP BD PARTITIONS. PROVIDE FIRE RATED PUTTY PADS AT DEVICES RECESS MOUNTED TO FIRE RATED GYP BD PARTITIONS.
  - EXISTING CAST-IN-PLACE CONCRETE TO REMAIN SHALL BE REHABILITATED, UNLESS OTHERWISE NOTED.



ISSUED FOR DEVELOPMENT PERMIT  
2024-09-20

ISSUED FOR SCHEMATIC DESIGN  
2024/07/05



UBC ANSO RENEWAL  
6303 NW MARINE DRIVE,  
VANCOUVER BC, V6T 1Z1

PROJECT NUMBER  
412404

REVISIONS

TITLE  
OVERALL FLOOR PLAN - LEVEL 03

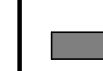
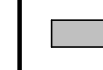
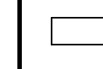
SHEET NUMBER  
A10-04

1 OVERALL FLOOR PLAN - LEVEL 03  
1 : 200

ROOM SCHEDULE - NEW CONSTRUCTION - ROOF LEVEL							
LEVEL	ROOM NO.	FUNCT. PROJ. COMPONENT	ROOM NAME	FUNCT. PRIO. AREA	NET AREA	DEPARTMENT	CATEGORY
ROOF LEVEL E 12106		STAIR 4		15.5 m <sup>2</sup>		CIRCULATION	CIRCULATION
ROOF LEVEL E 12200		CRG		108.5 m <sup>2</sup>			
ROOF LEVEL E 12206		630.03	CORRIDOR	7.4 m <sup>2</sup>	83.3 m <sup>2</sup>	SERVICES	SERVICES
ROOF LEVEL E 12208		3.04	OFFICE	11.0 m <sup>2</sup>	151.1 m <sup>2</sup>	ANTHROPOLOGY	RESEARCH LAB
ROOF LEVEL E 12211		3.29	OFFICE	11.0 m <sup>2</sup>	151.9 m <sup>2</sup>	ANTHROPOLOGY	RESEARCH SUPPORT
ROOF LEVEL E 12212		MECH			120.2 m <sup>2</sup>	SERVICES	SERVICES

**GENERAL NOTES**

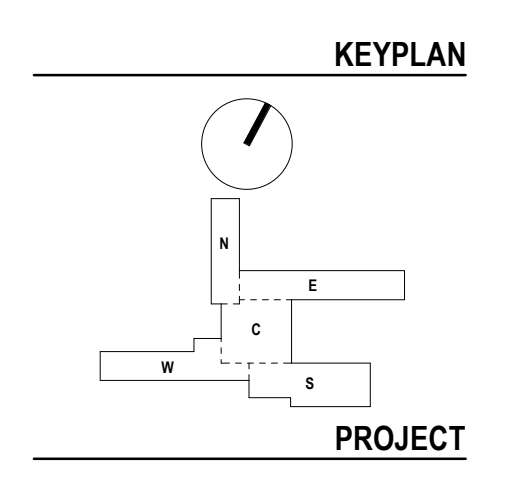
- FIREPROOF STRUCTURAL STEEL TO HAVE A FIRE RATING EQUAL TO OR GREATER THAN THAT OF THE ASSEMBLIES SUPPORTED.
- FLOOR FINISH TRANSITIONS SHALL BE CENTRED ON THE DOOR PANEL, UNLESS OTHERWISE NOTED.
- LOCATE DOOR FRAME JAMB OPENINGS 100mm FROM WALL INSIDE CORNERS, UNLESS OTHERWISE NOTED.
- DIMENSIONS, FLOOR LEVEL TAGS & SPOT ELEVATIONS REFERENCE FACE OF FINISH, UNLESS OTHERWISE NOTED.
- PROVIDE ACOUSTICALLY RATED PUTTY PADS AT DEVICES RECESS MOUNTED TO ACOUSTICALLY RATED GYP BD PARTITIONS. PROVIDE FIRE RATED PUTTY PADS AT DEVICES RECESS MOUNTED TO FIRE RATED GYP BD PARTITIONS.
- EXISTING CAST-IN-PLACE CONCRETE TO REMAIN SHALL BE REHABILITATED, UNLESS OTHERWISE NOTED.

-  EXISTING STRUCTURE
-  PROPOSED STRUCTURE
-  PROPOSED WALLS



**ISSUED FOR DEVELOPMENT PERMIT**  
2024-09-20

**ISSUED**  
ISSUED FOR SCHEMATIC DESIGN 2024-07-05



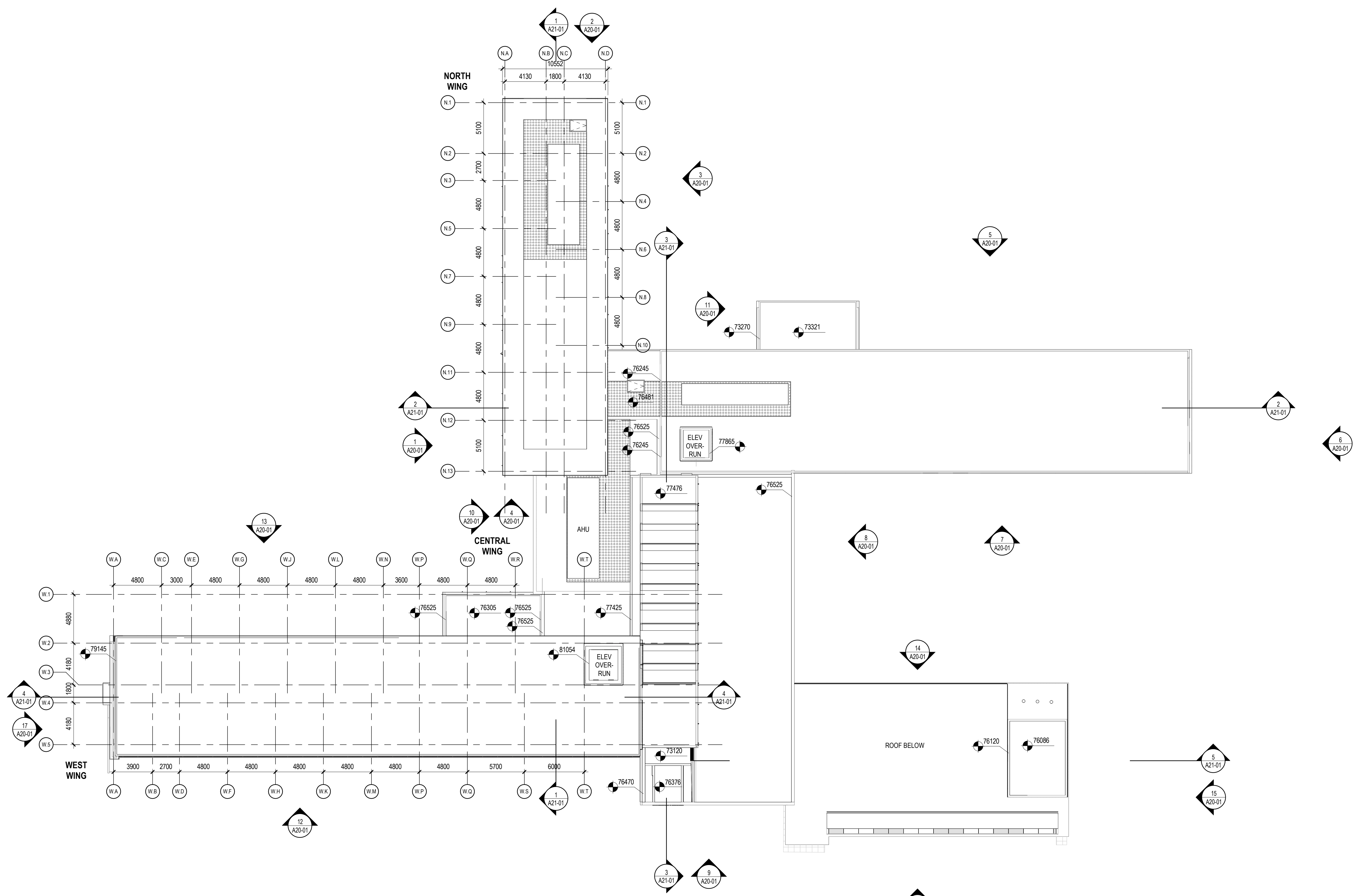
**UBC ANSO RENEWAL**  
6303 NW MARINE DRIVE,  
VANCOUVER BC, V6T 1Z1

**PROJECT NUMBER**  
412404

**REVISIONS**

**TITLE**  
OVERALL FLOOR PLAN -  
ROOF LEVEL

**SHEET NUMBER**  
**A10-05**



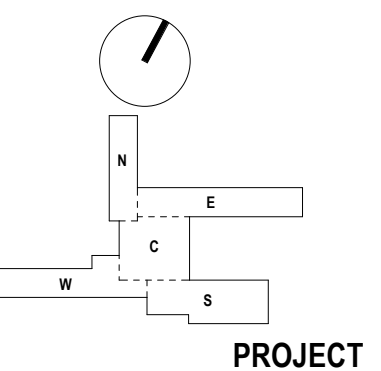
**1 OVERALL PLAN - ROOF LEVEL**  
1 : 200



ISSUED FOR DEVELOPMENT PERMIT  
2024-09-20

ISSUED FOR SCHEMATIC DESIGN  
2024/07/05

KEYPLAN



UBC ANSO RENEWAL  
6303 NW MARINE DRIVE,  
VANCOUVER BC, V6T 1Z1

PROJECT NUMBER  
412404

REVISIONS

TITLE

OVERALL EXTERIOR ELEVATIONS

SHEET NUMBER

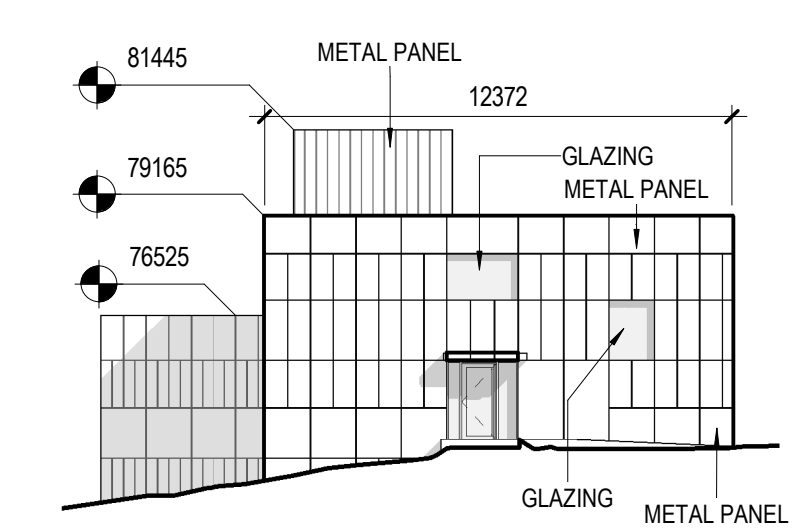
A20-01

GENERAL NOTES

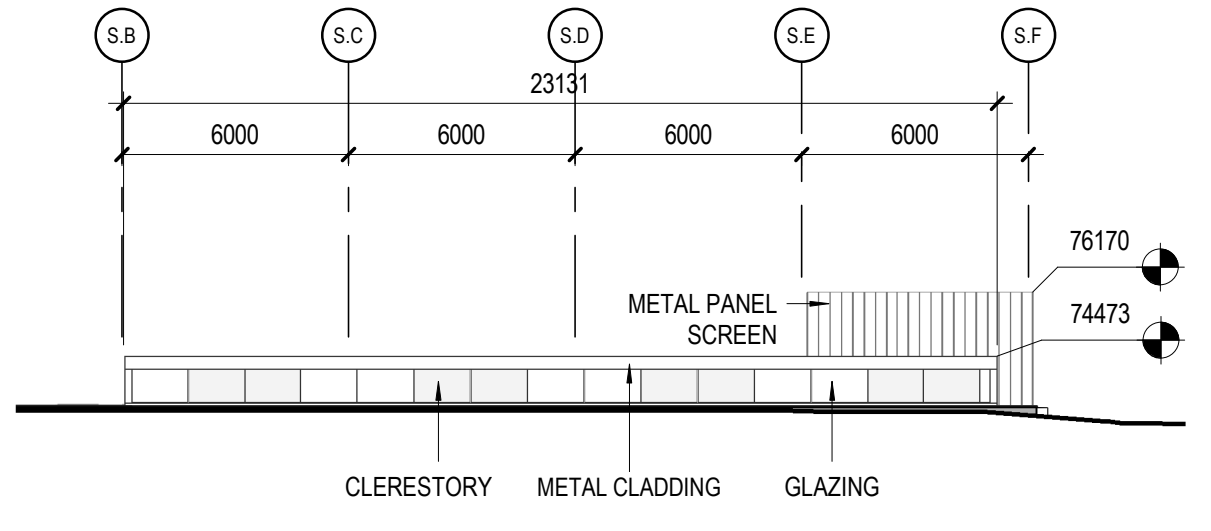
- FIREPROOF STRUCTURAL STEEL TO HAVE A FIRE RATING EQUAL TO OR GREATER THAN THAT OF THE ASSEMBLIES SUPPORTED.
- FLOOR FINISH TRANSITIONS SHALL BE CENTRED ON THE DOOR PANEL, UNLESS OTHERWISE NOTED.
- LOCATE DOOR FRAME JAMB OPENINGS 100mm FROM WALL INSIDE CORNERS, UNLESS OTHERWISE NOTED.
- DIMENSIONS, FLOOR LEVEL TAGS & SPOT ELEVATIONS REFERENCE FACE OF FINISH, UNLESS OTHERWISE NOTED.
- PROVIDE ACOUSTICALLY RATED PUTTY PADS AT DEVICES RECESS MOUNTED TO ACOUSTICALLY RATED GYP BD PARTITIONS. PROVIDE FIRE RATED PUTTY PADS AT DEVICES RECESS MOUNTED TO FIRE RATED GYP BD PARTITIONS.
- EXISTING CAST-IN-PLACE CONCRETE TO REMAIN SHALL BE REHABILITATED, UNLESS OTHERWISE NOTED.

MATERIAL LEGEND

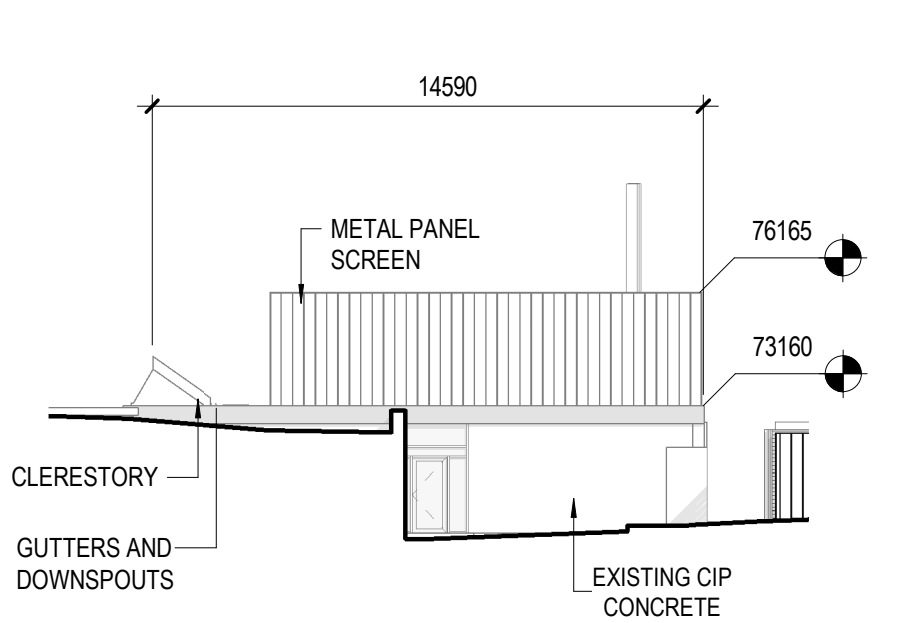
- METAL PANEL ALUMINUM CLADDING
- GLAZING
- EXISTING CONCRETE
- METAL CLADDING



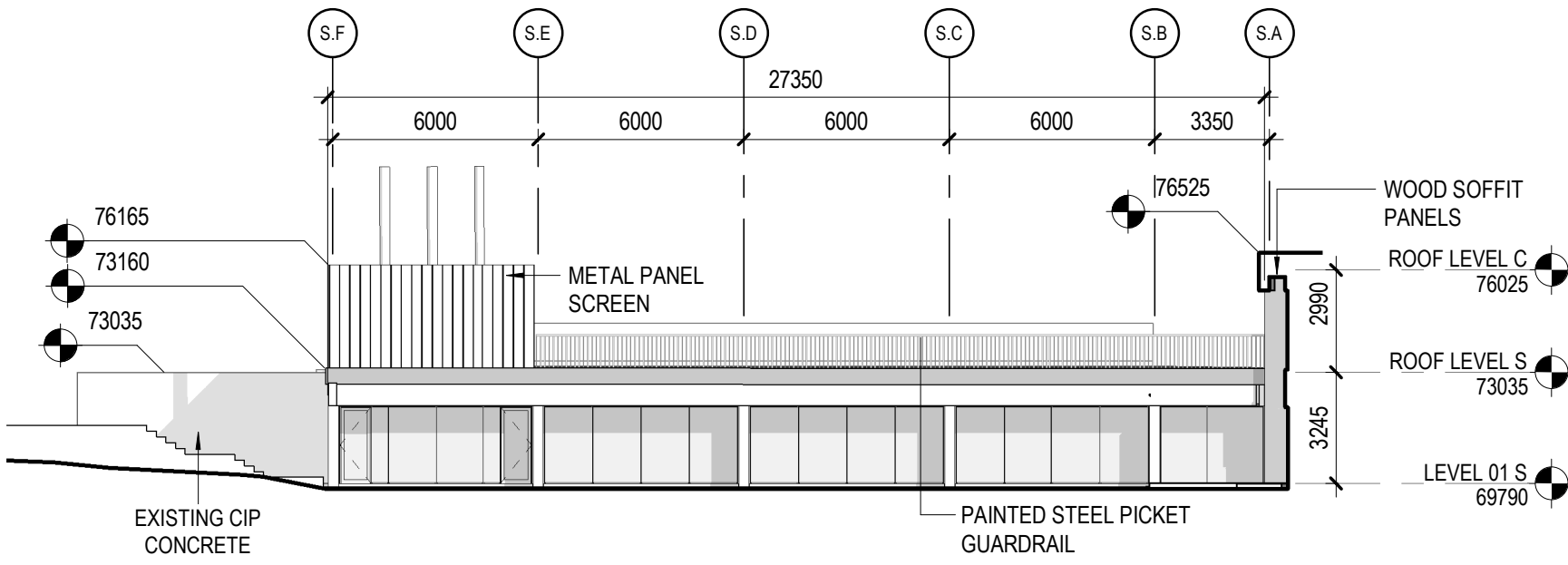
17 ELEVATION - WEST WING - WEST  
1 : 200



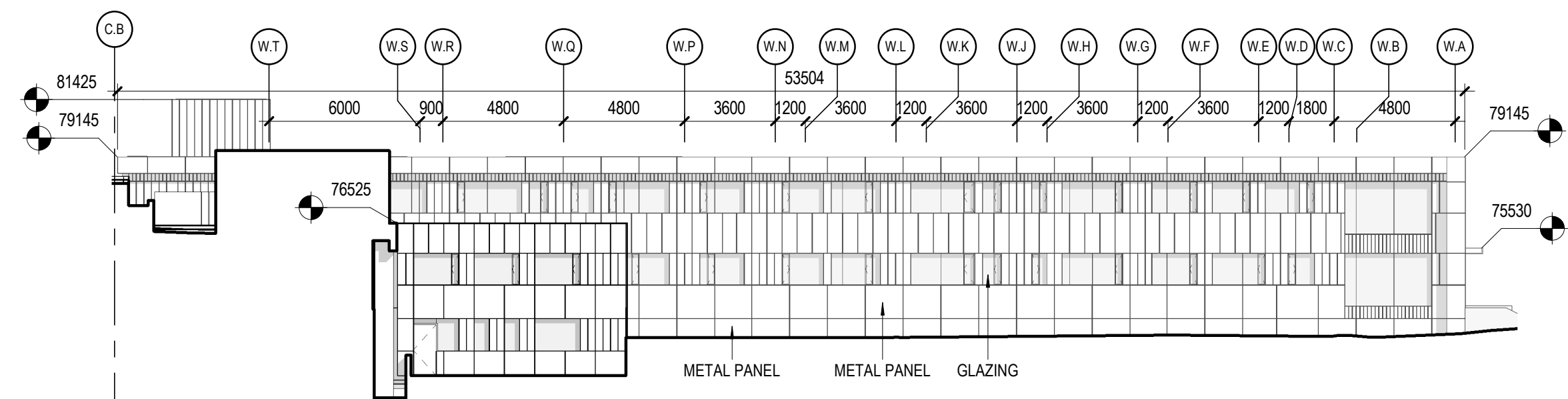
16 ELEVATION - SOUTH WING - SOUTH  
1 : 200



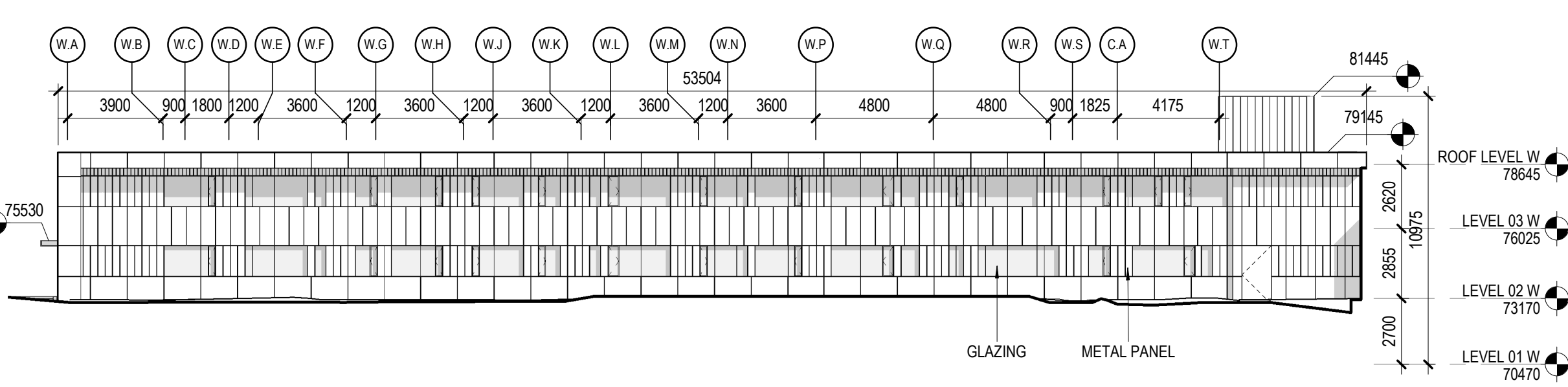
15 ELEVATION - SOUTH WING - EAST  
1 : 200



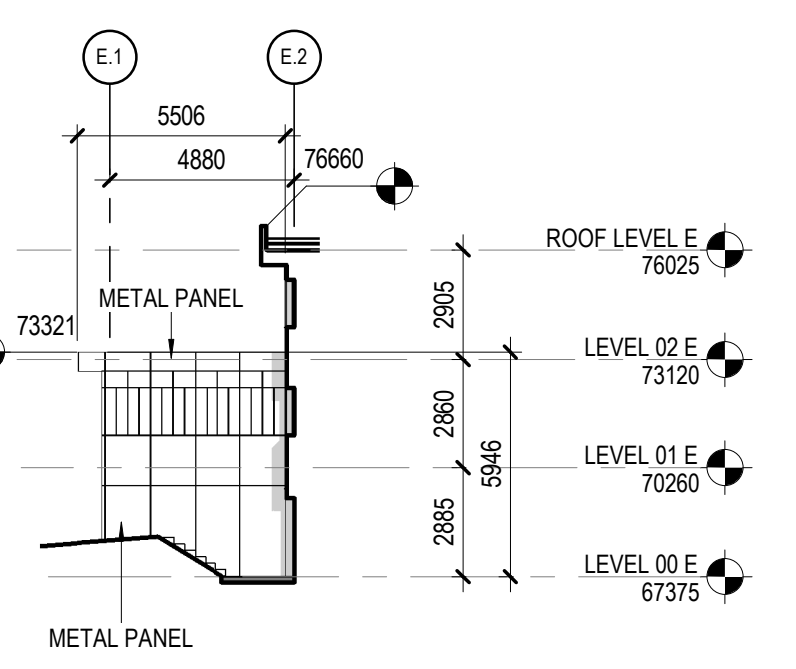
14 ELEVATION - SOUTH WING - NORTH  
1 : 200



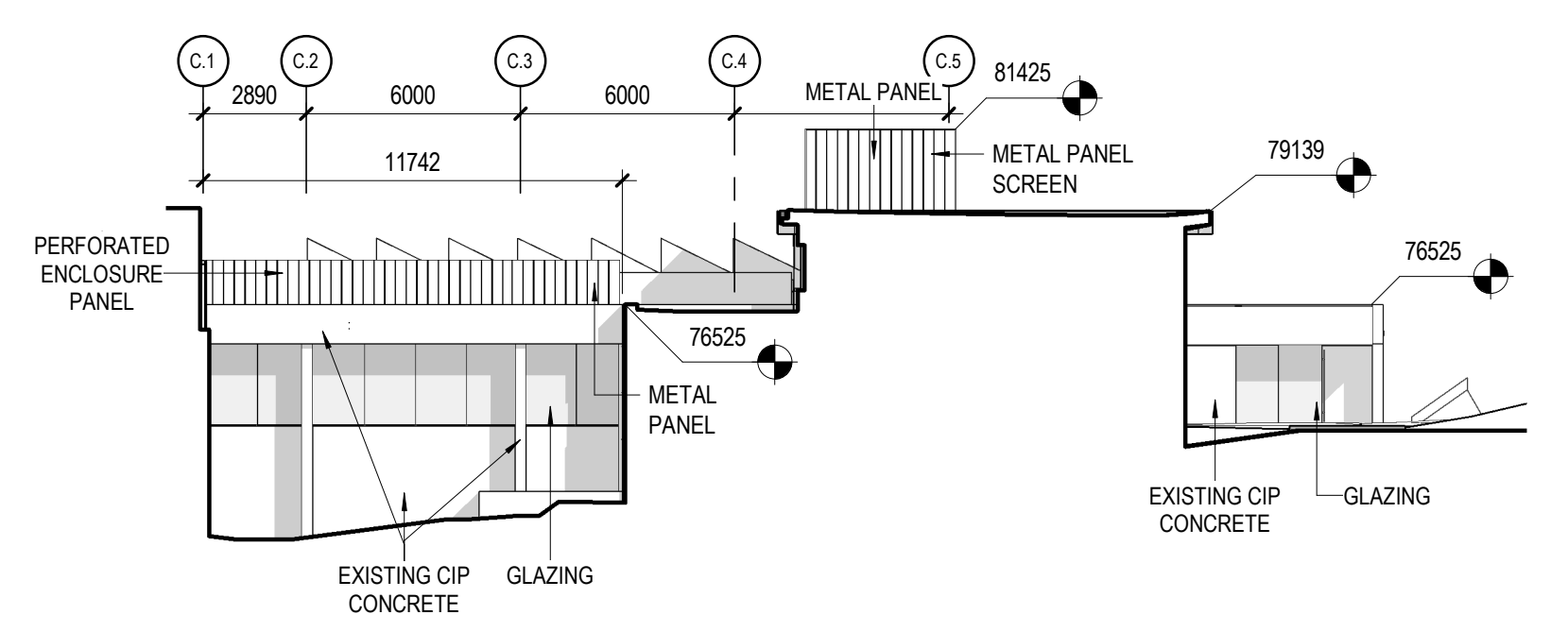
13 ELEVATION - WEST WING - NORTH  
1 : 200



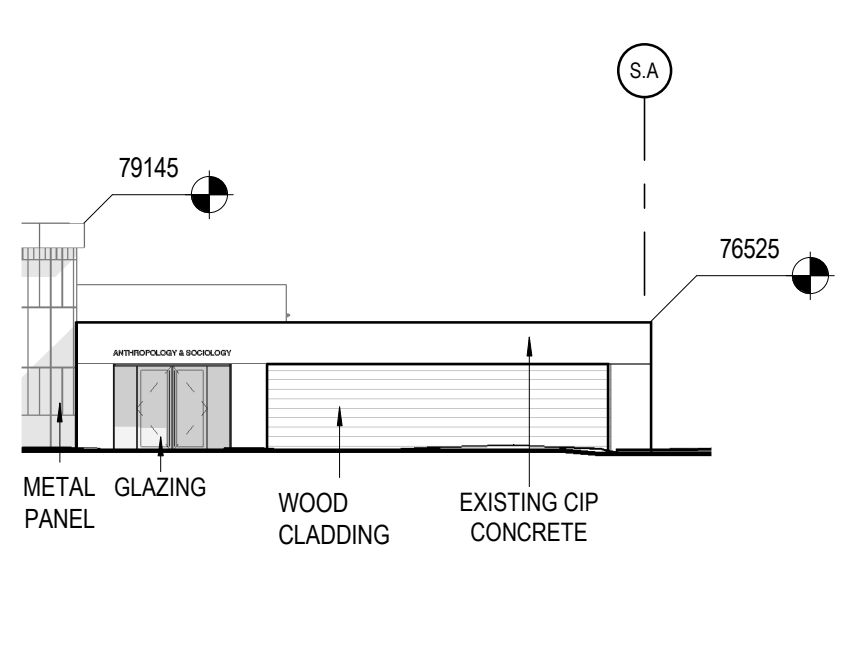
12 ELEVATION - WEST WING - SOUTH  
1 : 200



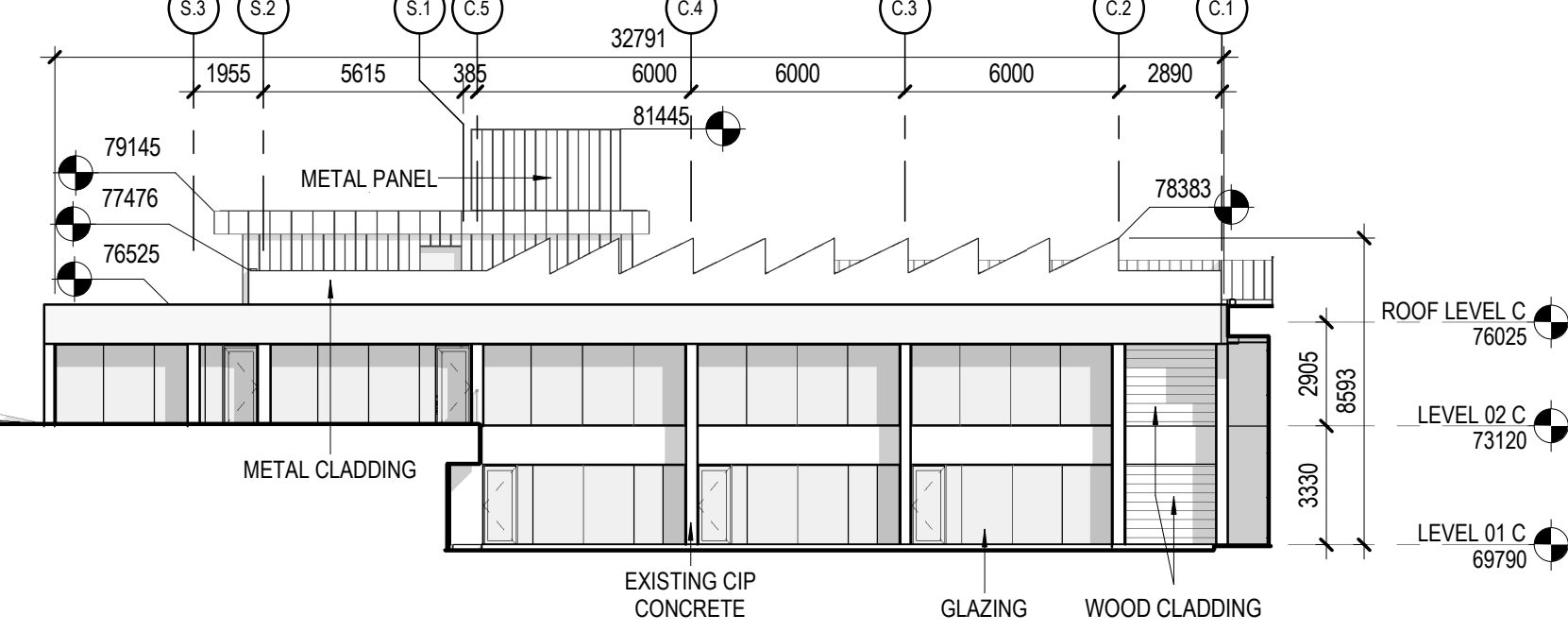
11 ELEVATION - EAST WING - WEST  
1 : 200



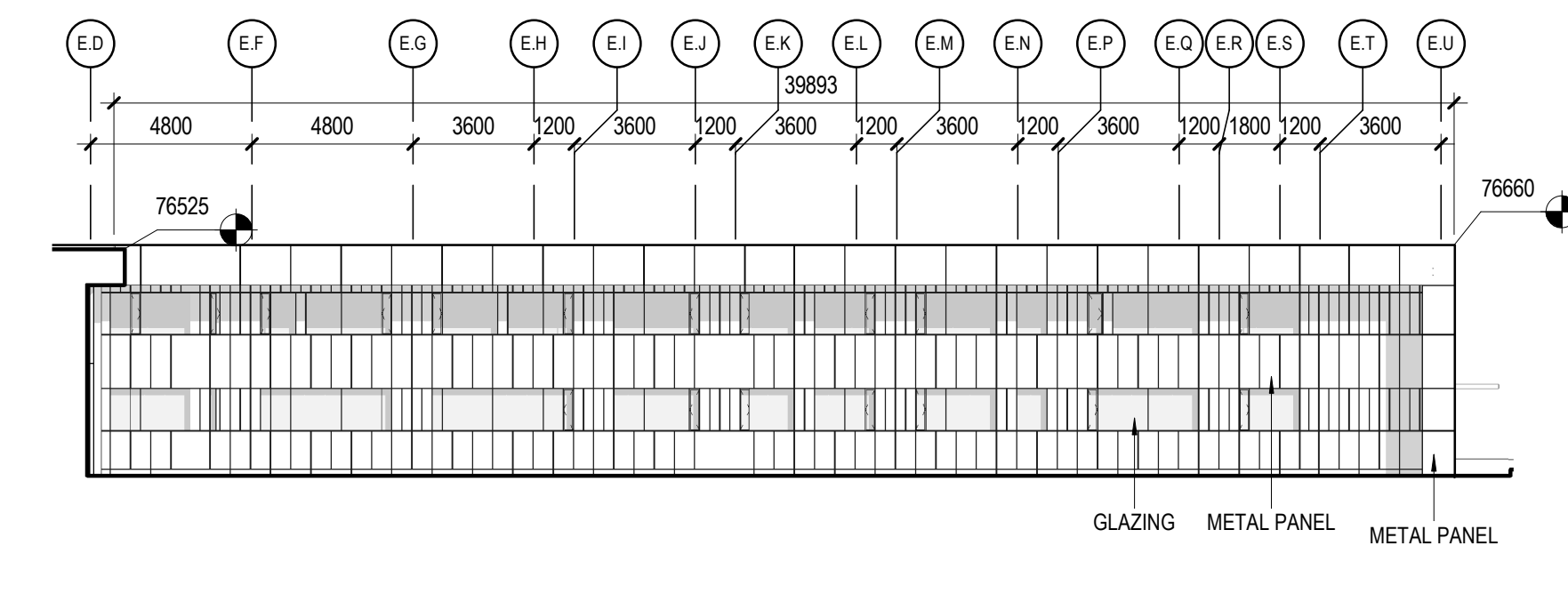
10 ELEVATION - CENTRAL WING - WEST  
1 : 200



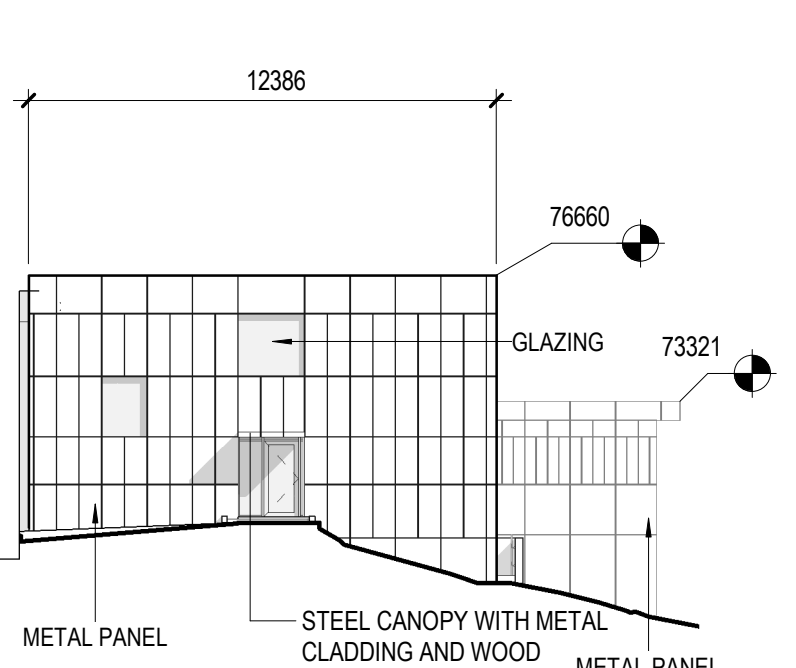
9 ELEVATION - CENTRAL WING - SOUTH  
1 : 200



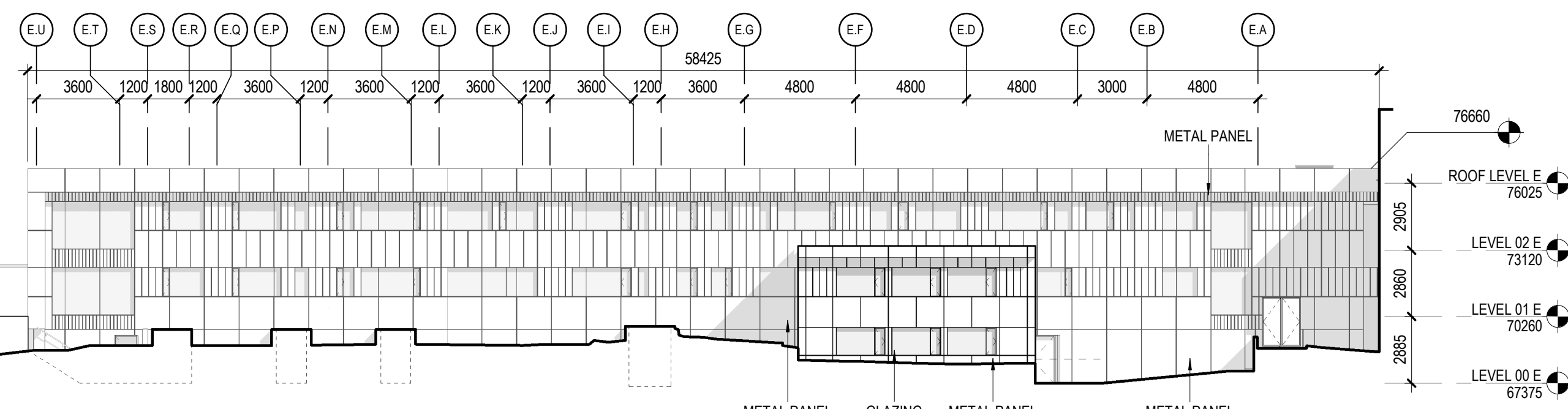
8 ELEVATION - CENTRAL WING - EAST  
1 : 200



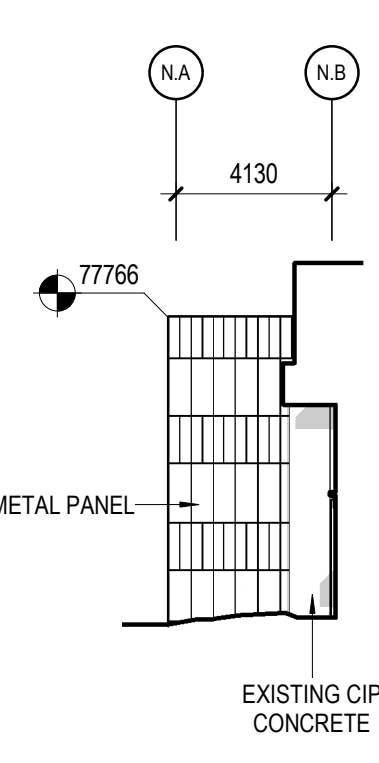
7 ELEVATION - EAST WING - SOUTH  
1 : 200



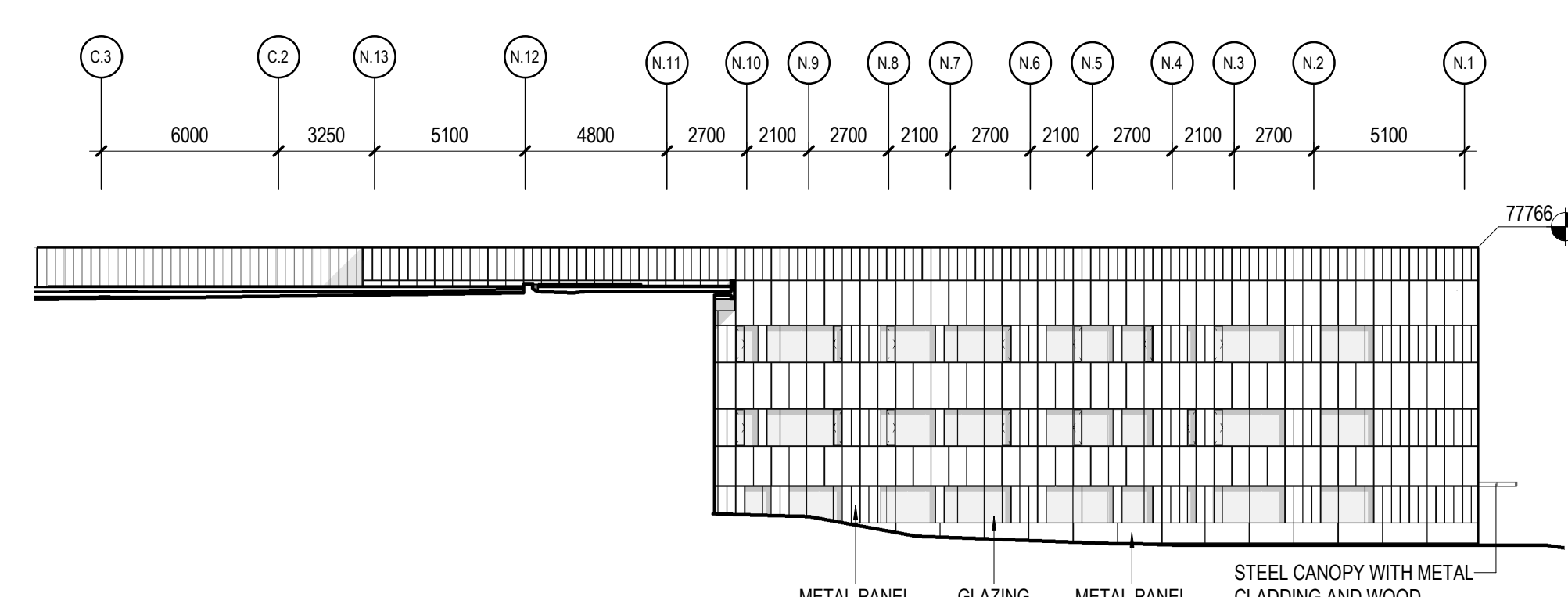
6 ELEVATION - EAST WING - EAST  
1 : 200



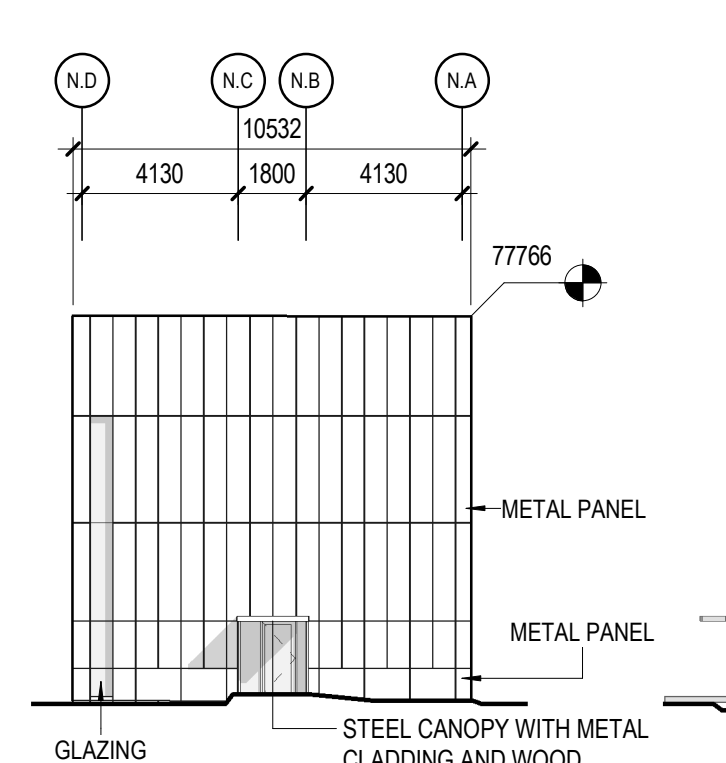
5 ELEVATION - EAST WING - NORTH  
1 : 200



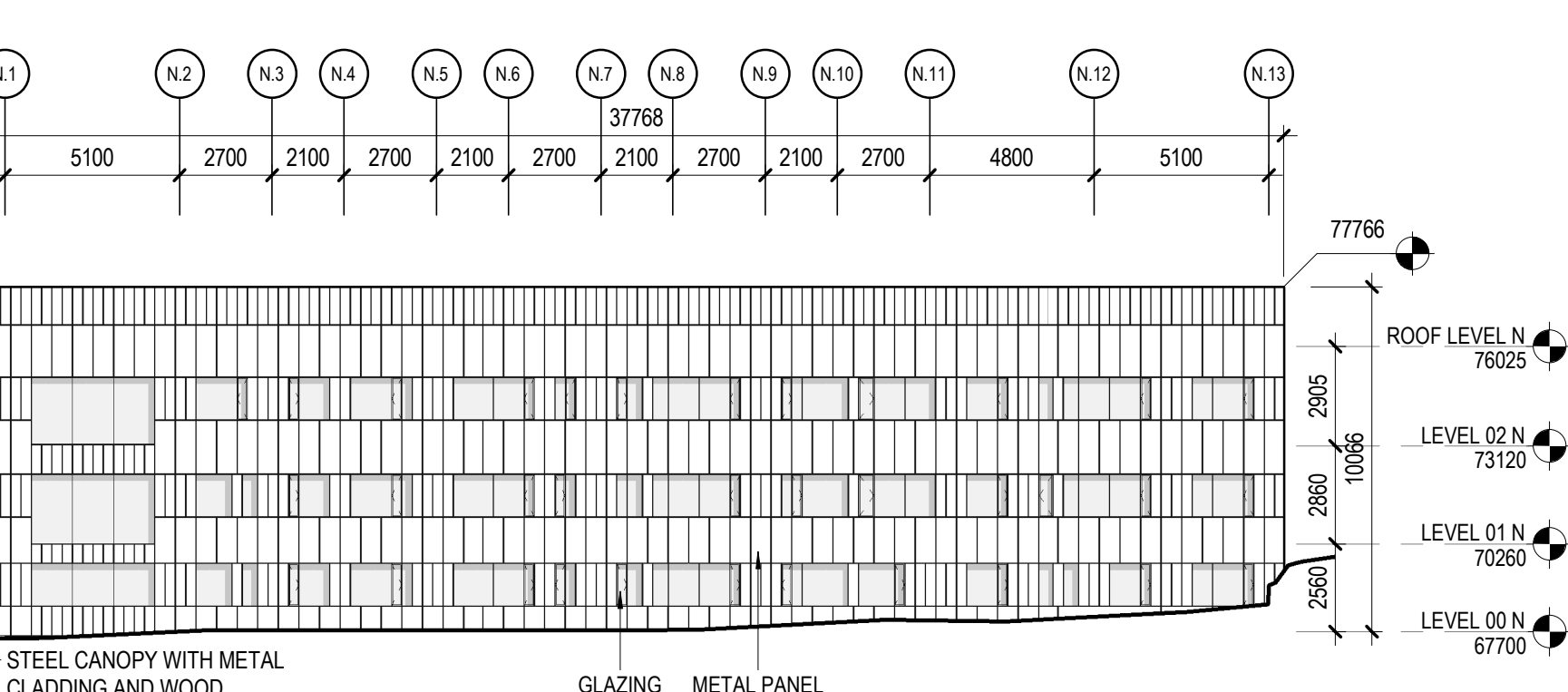
4 ELEVATION - NORTH WING - SOUTH  
1 : 200



3 ELEVATION - NORTH WING - EAST  
1 : 200



2 ELEVATION - NORTH WING - NORTH  
1 : 200



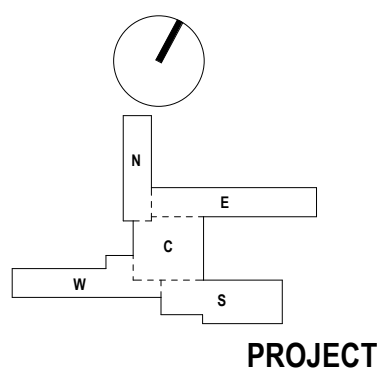
1 ELEVATION - NORTH WING - WEST  
1 : 200



ISSUED FOR DEVELOPMENT PERMIT  
2024-09-20

ISSUED FOR SCHEMATIC DESIGN  
2024-07-05

KEYPLAN



UBC ANSO RENEWAL  
6303 NW MARINE DRIVE,  
VANCOUVER BC, V6T 1Z1

PROJECT NUMBER  
412404

REVISIONS

TITLE

OVERALL BUILDING SECTIONS

SHEET NUMBER

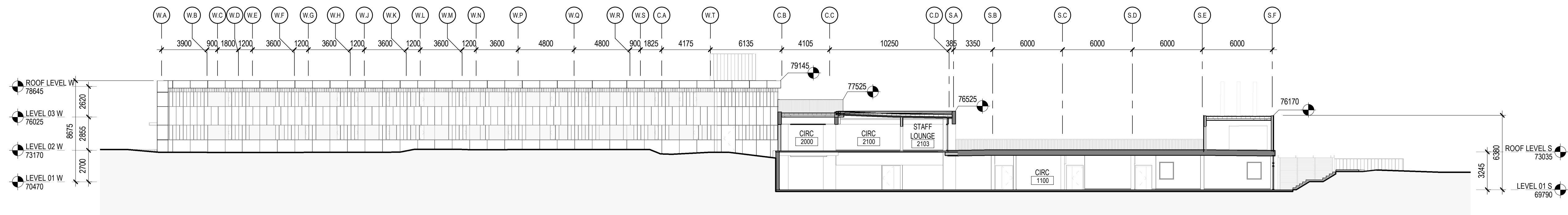
A21-01

GENERAL NOTES

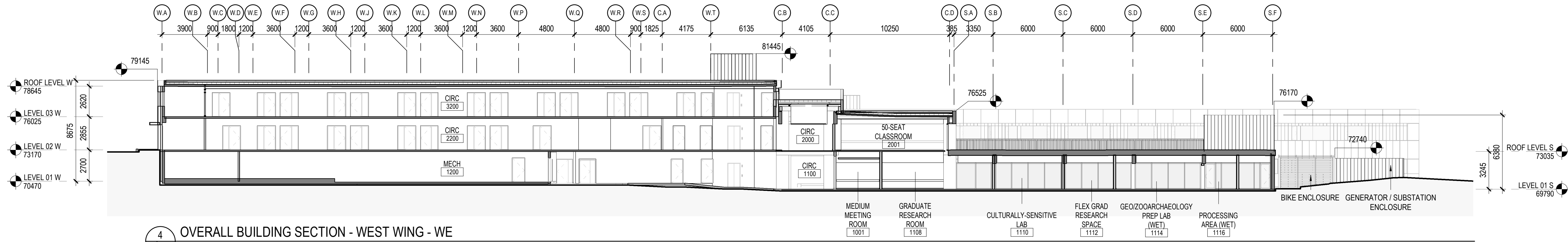
- FIREPROOF STRUCTURAL STEEL TO HAVE A FIRE RATING EQUAL TO OR GREATER THAN THAT OF THE ASSEMBLIES SUPPORTED.
- FLOOR FINISH TRANSITIONS SHALL BE CENTRED ON THE DOOR PANEL, UNLESS OTHERWISE NOTED.
- LOCATE DOOR FRAME JAMB OPENINGS 100mm FROM WALL INSIDE CORNERS, UNLESS OTHERWISE NOTED.
- DIMENSIONS, FLOOR LEVEL TAGS & SPOT ELEVATIONS REFERENCE FACE OF FINISH, UNLESS OTHERWISE NOTED.
- PROVIDE ACOUSTICALLY RATED PUTTY PADS AT DEVICES RECESS MOUNTED TO ACOUSTICALLY RATED GYP BD PARTITIONS. PROVIDE FIRE RATED PUTTY PADS AT DEVICES RECESS MOUNTED TO FIRE RATED GYP BD PARTITIONS.
- EXISTING CAST-IN-PLACE CONCRETE TO REMAIN SHALL BE REHABILITATED, UNLESS OTHERWISE NOTED.

MATERIAL LEGEND

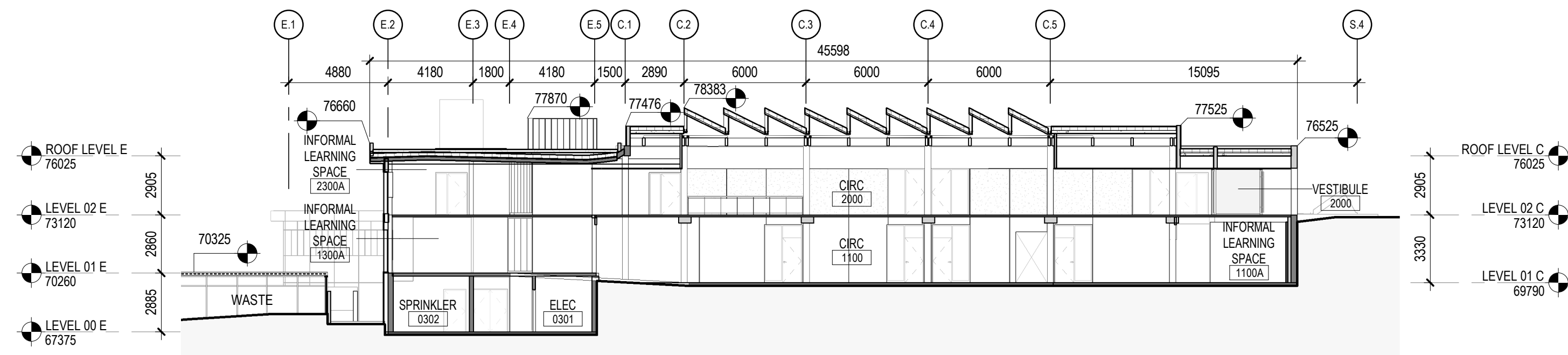
- METAL PANEL ALUMINUM CLADDING
- GLAZING
- EXISTING CONCRETE
- METAL CLADDING



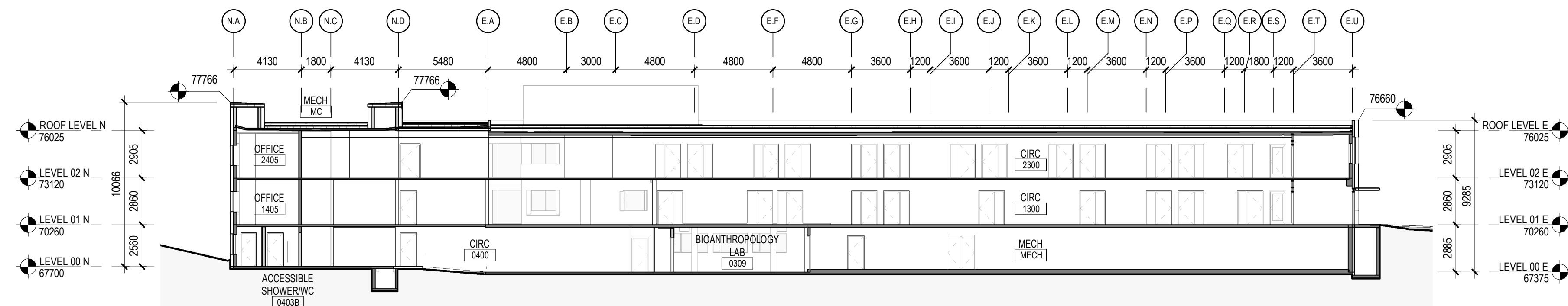
5 OVERALL BUILDING SECTION - SOUTH WING - EW  
1:200



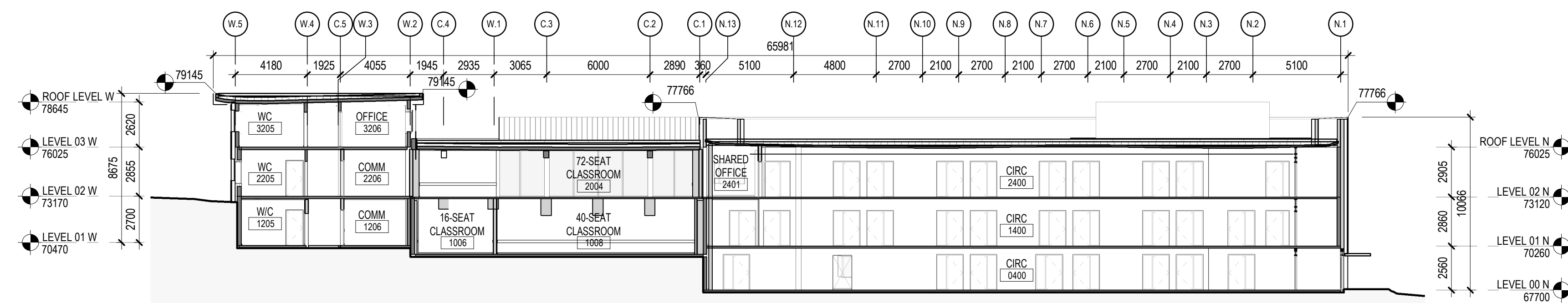
4 OVERALL BUILDING SECTION - WEST WING - WE  
1:200



3 OVERALL BUILDING SECTION - CENTRAL WING - NS  
1:200



2 OVERALL BUILDING SECTION - EAST WING - WE  
1:200



1 OVERALL BUILDING SECTION - NORTH WING - SN  
1:200